

**TRACT 40590 - Portion of Blocks 26, and 5, West Cameron Area, Revised, Cameron Parish, Louisiana**

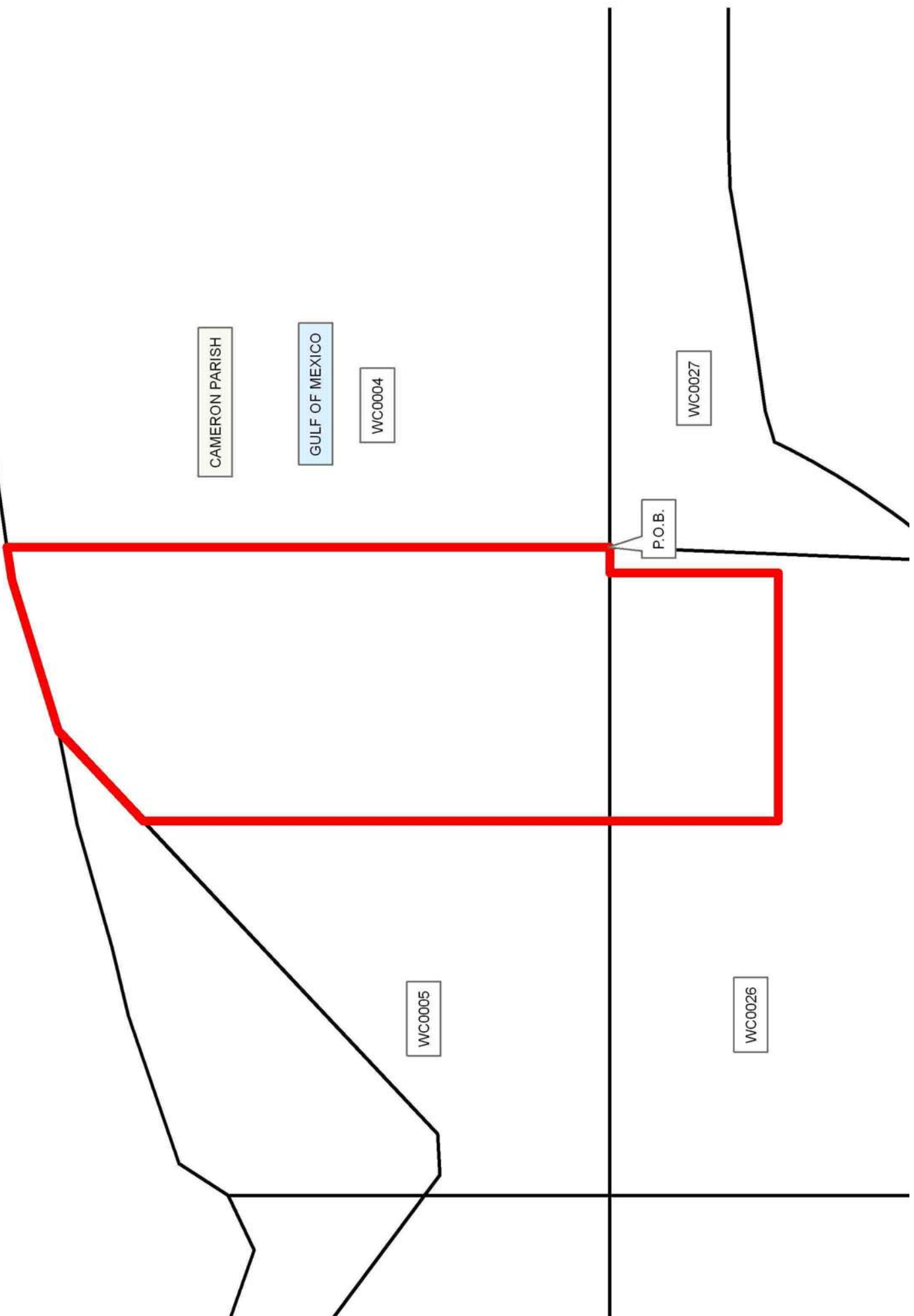
The beds and bottoms of all water bodies belonging to the State of Louisiana located in Blocks 26, and 5, West Cameron Area, Revised, together with any present lands formed by accretion to the shoreline or islands formed therein, located in Cameron Parish, Louisiana, owned by and not presently under mineral lease as of December 10, 2008, from the State of Louisiana, the geographical area of which is more fully described as follows: Beginning at the Southeast corner of Block 5, West Cameron Area, Revised, having Coordinates of X = 1,377,295.42 and Y = 393,790.24; thence West 601.76 feet along the South line of said Block 5 to a point having Coordinates of X = 1,376,693.66 and Y = 393,790.24; thence South 3,984.68 feet to a point having Coordinates of X = 1,376,693.66 and Y = 389,805.56; thence West 5,880.27 feet to a point having Coordinates of X = 1,370,813.39 and Y = 389,805.56; thence North 3,984.68 feet to a point on the North line of said Block 26, also being the South line of said Block 5, having Coordinates of X = 1,370,813.39 and Y = 393,790.24; thence North 11,065.33 feet to a point on the Louisiana Coastline, as decreed by the Supreme Court of the United States, as determined by a Special Master appointed therein, in litigation styled *United States v. State of Louisiana et al No. 9 Original*, in 1975, having Coordinates of X = 1,370,813.39 and Y = 404,855.57; thence along said Louisiana Coastline the following courses: Northeasterly on a straight line to a point having Coordinates of X = 1,372,945 and Y = 406,862; Northeasterly on a straight line to a point having Coordinates of X = 1,376,515 and Y = 407,966 and Northeasterly on a straight line to a point on the East line of said Block 5 having Coordinates of X = 1,377,295.42 and Y = 408,078.03; thence South 14,287.79 feet along the East line of said Block 5 to the point of beginning, containing approximately **2,500.00 acres**, all as more particularly outlined on a plat on file in the Office of Mineral Resources, Department of Natural Resources. All bearings, distances and coordinates are based on Louisiana Coordinate System of 1927, (North or South Zone).

NOTE: The above description of the Tract nominated for lease has been provided and corrected, where required, exclusively by the nomination party. Any mineral lease selected from this Tract and awarded by the Louisiana State Mineral Board shall be without warranty of any kind, either express, implied, or statutory, including, but not limited to, the implied warranties of merchantability and fitness for a particular purpose. Should the mineral lease awarded by the Louisiana State Mineral Board be subsequently modified, cancelled or abrogated due to the existence of conflicting leases, operating agreements, private claims or other future obligations or conditions which may affect all or any portion of the leased Tract, it shall not relieve the Lessee of the obligation to pay any bonus due thereon to the Louisiana State Mineral Board, nor shall the Louisiana State Mineral Board be obligated to refund any consideration paid by the Lessor prior to such modification, cancellation, or abrogation, including, but not limited to, bonuses, rentals and royalties.

NOTE: The State of Louisiana does hereby reserve, and this lease shall be subject to, the imprescriptible right of surface use in the nature of a servitude in favor of the Department of Natural Resources, including its Offices and Commissions, for the sole purpose of implementing, constructing, servicing and maintaining approved coastal zone management and/or restoration projects. Utilization of any and all rights derived under this lease by the mineral lessee, its agents, successors or assigns, shall not interfere with nor hinder the reasonable surface use by the Department of Natural Resources, its Offices or Commissions, as herein above reserved.

Applicant: THE GULF SHORES COMPANIES, INC.

Bidder	Cash Payment	Price/Acre	Rental	Oil	Gas	Other



**TRACT 40591 - Portion of Block 6, West Cameron Area, Revised, Cameron Parish, Louisiana**

The beds and bottoms of all water bodies belonging to the State of Louisiana located in Block 6, West Cameron Area, Revised, together with any present lands formed by accretion to the shoreline or islands formed therein, located in Cameron Parish, Louisiana, owned by and not presently under mineral lease as of December 10, 2008, from the State of Louisiana, the geographical area of which is more fully described as follows: Beginning at the Southwest corner of Block 6, West Cameron Area, Revised, having Coordinates of X = 1,347,177.57 and Y = 393,790.24; thence North 11,410.29 feet along the West line of said Block 6 to a point on the Louisiana Coastline, as decreed by the Supreme Court of the United States, as determined by a Special Master appointed therein, in litigation styled *United States v. State of Louisiana et al No. 9 Original*, in 1975, having Coordinates of X = 1,347,177.57 and Y = 405,200.53; thence along said Louisiana Coastline the following courses: Southeasterly on a straight line to a point having Coordinates of X = 1,351,162 and Y = 404,620; Southeasterly on a straight line to a point having Coordinates of X = 1,354,310 and Y = 403,875 and Southeasterly on a straight line to the Northernmost corner of State Lease No. 19497 having Coordinates of X = 1,356,282.18 and Y = 402,402.31; thence South 3,584.31 feet along the West boundary of said State Lease No. 19497 to its Southwest corner having Coordinates of X = 1,356,282.18 and Y = 398,818.00; thence South 5,027.76 feet to a point on the South line of said Block 6 having Coordinates of X = 1,356,282.18 and Y = 393,790.24; thence West 9,104.61 feet along the South line of said Block 6 to the point of beginning, containing approximately **2,196.12 acres**, all as more particularly outlined on a plat on file in the Office of Mineral Resources, Department of Natural Resources. All bearings, distances and coordinates are based on Louisiana Coordinate System of 1927, (North or South Zone).

NOTE: The above description of the Tract nominated for lease has been provided and corrected, where required, exclusively by the nomination party. Any mineral lease selected from this Tract and awarded by the Louisiana State Mineral Board shall be without warranty of any kind, either express, implied, or statutory, including, but not limited to, the implied warranties of merchantability and fitness for a particular purpose. Should the mineral lease awarded by the Louisiana State Mineral Board be subsequently modified, cancelled or abrogated due to the existence of conflicting leases, operating agreements, private claims or other future obligations or conditions which may affect all or any portion of the leased Tract, it shall not relieve the Lessee of the obligation to pay any bonus due thereon to the Louisiana State Mineral Board, nor shall the Louisiana State Mineral Board be obligated to refund any consideration paid by the Lessor prior to such modification, cancellation, or abrogation, including, but not limited to, bonuses, rentals and royalties.

NOTE: The State of Louisiana does hereby reserve, and this lease shall be subject to, the imprescriptible right of surface use in the nature of a

servitude in favor of the Department of Natural Resources, including its Offices and Commissions, for the sole purpose of implementing, constructing, servicing and maintaining approved coastal zone management and/or restoration projects. Utilization of any and all rights derived under this lease by the mineral lessee, its agents, successors or assigns, shall not interfere with nor hinder the reasonable surface use by the Department of Natural Resources, its Offices or Commissions, as herein above reserved.

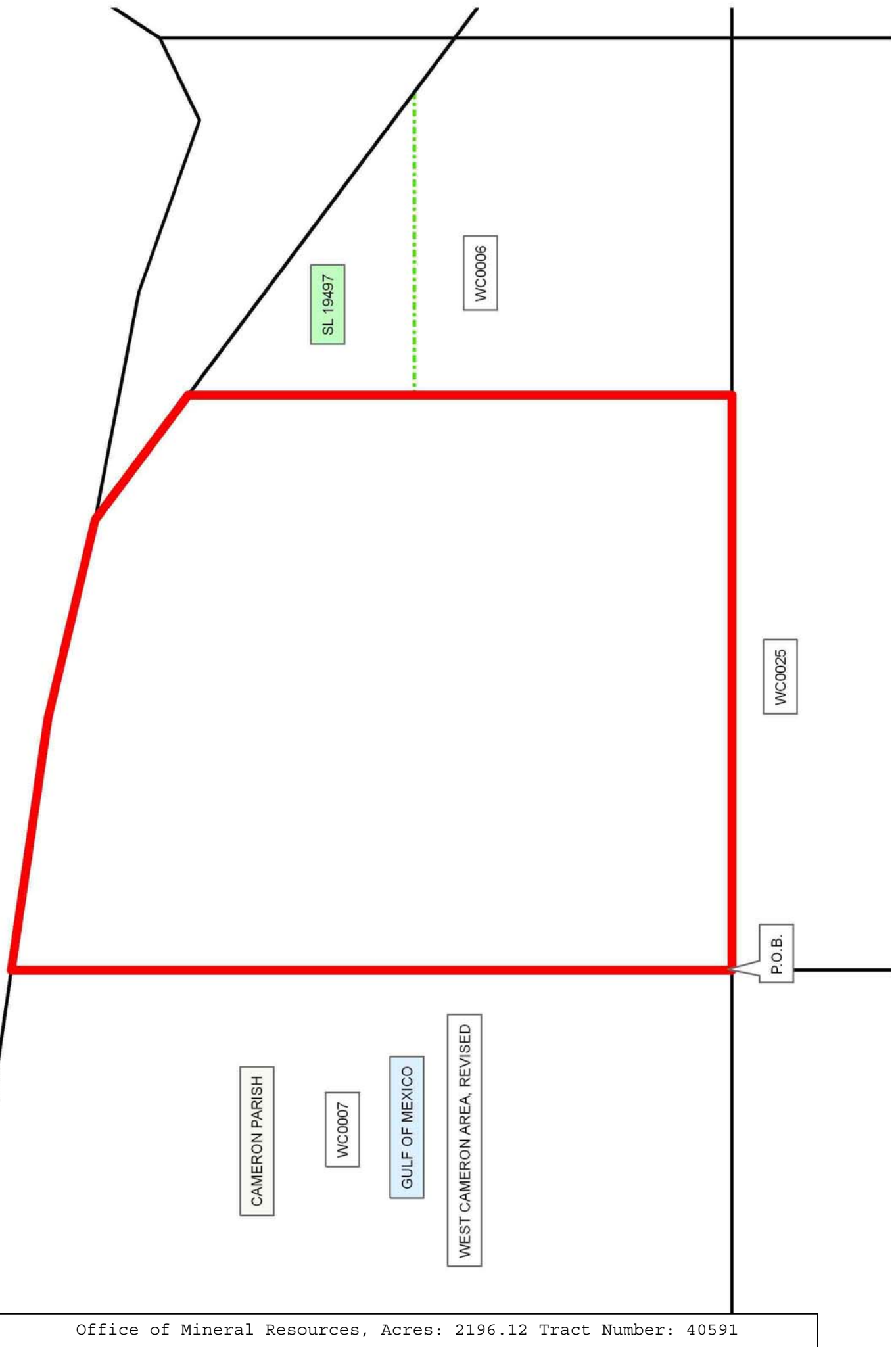
NOTE: It appears, according to our records, that a portion of this Tract is located within the restrictive safety fairway area as set out by the Corps of Engineers, U.S. Army and/or the restrictive anchorage area as set out by the U.S. Coast Guard.

Applicant: THE GULF SHORES COMPANIES, INC.

Bidder	Cash Payment	Price/Acre	Rental	Oil	Gas	Other

**Legend**

- 08120052
- Blocks
- Active\_Leases



**TRACT 40592 - Portion of Blocks 26, and 5, West Cameron Area, Revised, Cameron Parish, Louisiana**

The beds and bottoms of all water bodies belonging to the State of Louisiana located in Blocks 26, and 5, West Cameron Area, Revised, together with any present lands formed by accretion to the shoreline or islands formed therein, located in Cameron Parish, Louisiana, owned by and not presently under mineral lease as of December 10, 2008, from the State of Louisiana, the geographical area of which is more fully described as follows: Beginning at a point located in Block 26, West Cameron Area, Revised, having Coordinates of X = 1,370,813.39 and Y = 386,688.98; thence West 7,421.39 feet to a point having Coordinates of X = 1,363,392.00 and Y = 386,688.98; thence North 7,101.26 feet to a point on the North line of said Block 26, also being the South line of Block 5, West Cameron Area, Revised, having Coordinates of X = 1,363,392.00 and Y = 393,790.24; thence North 4,079.76 feet to a point on the Louisiana Coastline, as decreed by the Supreme Court of the United States, as determined by a Special Master appointed therein, in litigation styled *United States v. State of Louisiana et al No. 9 Original*, in 1975, having Coordinates of X = 1,363,392 and Y = 397,870; thence Northeasterly on a straight line, along said Louisiana Coastline, to a point having Coordinates of X = 1,370,813.39 and Y = 404,855.57; thence South 11,065.33 feet to a point on the South line of said Block 5, also being the North line of said Block 26 having Coordinates of X = 1,370,813.39 and Y = 393,790.24; thence South 7,101.26 feet to the point of beginning, containing approximately **2,500.00 acres**, all as more particularly outlined on a plat on file in the Office of Mineral Resources, Department of Natural Resources. All bearings, distances and coordinates are based on Louisiana Coordinate System of 1927, (North or South Zone).

NOTE: The above description of the Tract nominated for lease has been provided and corrected, where required, exclusively by the nomination party. Any mineral lease selected from this Tract and awarded by the Louisiana State Mineral Board shall be without warranty of any kind, either express, implied, or statutory, including, but not limited to, the implied warranties of merchantability and fitness for a particular purpose. Should the mineral lease awarded by the Louisiana State Mineral Board be subsequently modified, cancelled or abrogated due to the existence of conflicting leases, operating agreements, private claims or other future obligations or conditions which may affect all or any portion of the leased Tract, it shall not relieve the Lessee of the obligation to pay any bonus due thereon to the Louisiana State Mineral Board, nor shall the Louisiana State Mineral Board be obligated to refund any consideration paid by the Lessor prior to such modification, cancellation, or abrogation, including, but not limited to, bonuses, rentals and royalties.

NOTE: The State of Louisiana does hereby reserve, and this lease shall be subject to, the imprescriptible right of surface use in the nature of a servitude in favor of the Department of Natural Resources, including its Offices and Commissions, for the sole purpose of implementing,

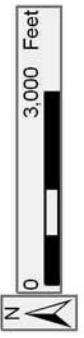
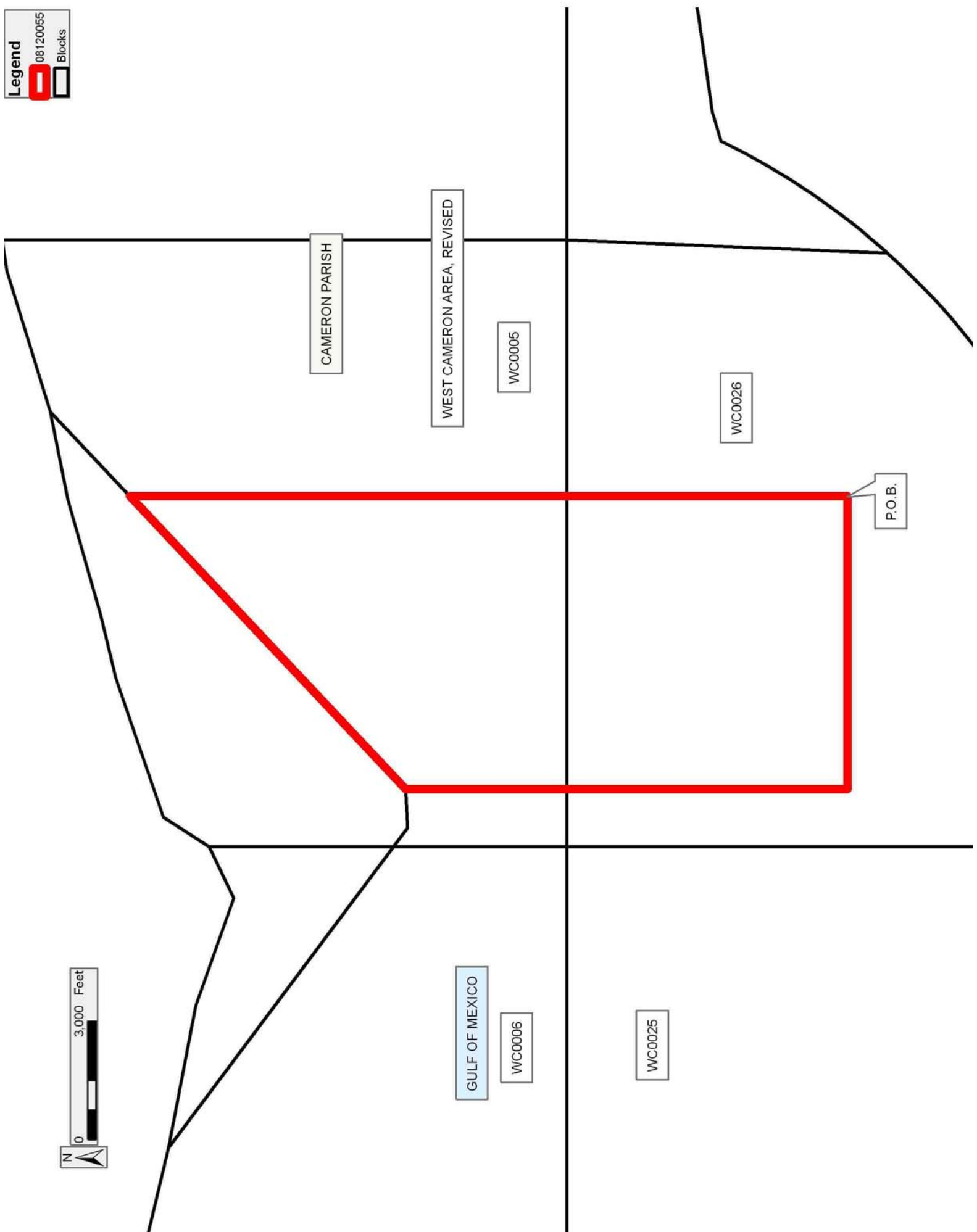
constructing, servicing and maintaining approved coastal zone management and/or restoration projects. Utilization of any and all rights derived under this lease by the mineral lessee, its agents, successors or assigns, shall not interfere with nor hinder the reasonable surface use by the Department of Natural Resources, its Offices or Commissions, as herein above reserved.

NOTE: It appears, according to our records, that a portion of this Tract is located within the restrictive safety fairway area as set out by the Corps of Engineers, U.S. Army and/or the restrictive anchorage area as set out by the U.S. Coast Guard.

Applicant: THE GULF SHORES COMPANIES, INC.

Bidder	Cash Payment	Price/Acre	Rental	Oil	Gas	Other





**TRACT 40593 - Portion of Blocks 25, 26, 5, and 6, West Cameron Area, Revised, Cameron Parish, Louisiana**

The beds and bottoms of all water bodies belonging to the State of Louisiana located in Blocks 25, 26, 5, and 6, West Cameron Area, Revised, together with any present lands formed by accretion to the shoreline or islands formed therein, located in Cameron Parish, Louisiana, owned by and not presently under mineral lease as of December 10, 2008, from the State of Louisiana, the geographical area of which is more fully described as follows: Beginning at the Southeast corner of State Lease No. 19497, located in Block 6, West Cameron Area, Revised, also being a point on the Louisiana Coastline, as decreed by the Supreme Court of the United States, as determined by a Special Master appointed therein, in litigation styled *United States v. State of Louisiana et al No. 9 Original*, in 1975, having Coordinates of X = 1,361,082.18 and Y = 398,818.00; thence along said Louisiana Coastline the following courses: Southeasterly on a straight line to a point on the East line of said Block 6, also being the West line of Block 5, West Cameron Area, Revised, having Coordinates of X = 1,361,935.62 and Y = 398,180.72; Southeasterly on a straight line to a point having Coordinates of X = 1,362,416 and Y = 397,822 and Northeasterly on a straight line to a point having Coordinates of X = 1,363,392 and Y = 397,870; thence South 4,079.76 feet to a point on the South boundary of said Block 5, also being the North line of Block 26, West Cameron Area, Revised, having Coordinates of X = 1,363,392.00 and Y = 393,790.24; thence South 7,101.26 feet to a point having Coordinates of X = 1,363,392.00 and Y = 386,688.98; thence West 1,456.38 feet to a point on the West line of said Block 26, also being the East line of Block 25, West Cameron Area, Revised, having Coordinates of X = 1,361,935.62 and Y = 386,688.98; thence West 5,653.44 feet to a point having Coordinates of X = 1,356,282.18 and Y = 386,688.98; thence North 7,101.26 feet to a point on the North line of said Block 25, also being the South line of said Block 6 having Coordinates of X = 1,356,282.18 and Y = 393,790.24; thence North 5,027.76 feet to the Southwest corner of said State Lease No. 19497 having Coordinates of X = 1,356,282.18 and Y = 398,818.00; thence East 4,800.00 feet along the South boundary of said State Lease No. 19497 to the point of beginning, containing approximately **1,942.66 acres**, all as more particularly outlined on a plat on file in the Office of Mineral Resources, Department of Natural Resources. All bearings, distances and coordinates are based on Louisiana Coordinate System of 1927, (North or South Zone).

NOTE: The above description of the Tract nominated for lease has been provided and corrected, where required, exclusively by the nomination party. Any mineral lease selected from this Tract and awarded by the Louisiana State Mineral Board shall be without warranty of any kind, either express, implied, or statutory, including, but not limited to, the implied warranties of merchantability and fitness for a particular purpose. Should the mineral lease awarded by the Louisiana State Mineral Board be subsequently modified, cancelled or abrogated due to the existence of conflicting leases, operating agreements, private claims or

other future obligations or conditions which may affect all or any portion of the leased Tract, it shall not relieve the Lessee of the obligation to pay any bonus due thereon to the Louisiana State Mineral Board, nor shall the Louisiana State Mineral Board be obligated to refund any consideration paid by the Lessor prior to such modification, cancellation, or abrogation, including, but not limited to, bonuses, rentals and royalties.

NOTE: The State of Louisiana does hereby reserve, and this lease shall be subject to, the imprescriptible right of surface use in the nature of a servitude in favor of the Department of Natural Resources, including its Offices and Commissions, for the sole purpose of implementing, constructing, servicing and maintaining approved coastal zone management and/or restoration projects. Utilization of any and all rights derived under this lease by the mineral lessee, its agents, successors or assigns, shall not interfere with nor hinder the reasonable surface use by the Department of Natural Resources, its Offices or Commissions, as herein above reserved.

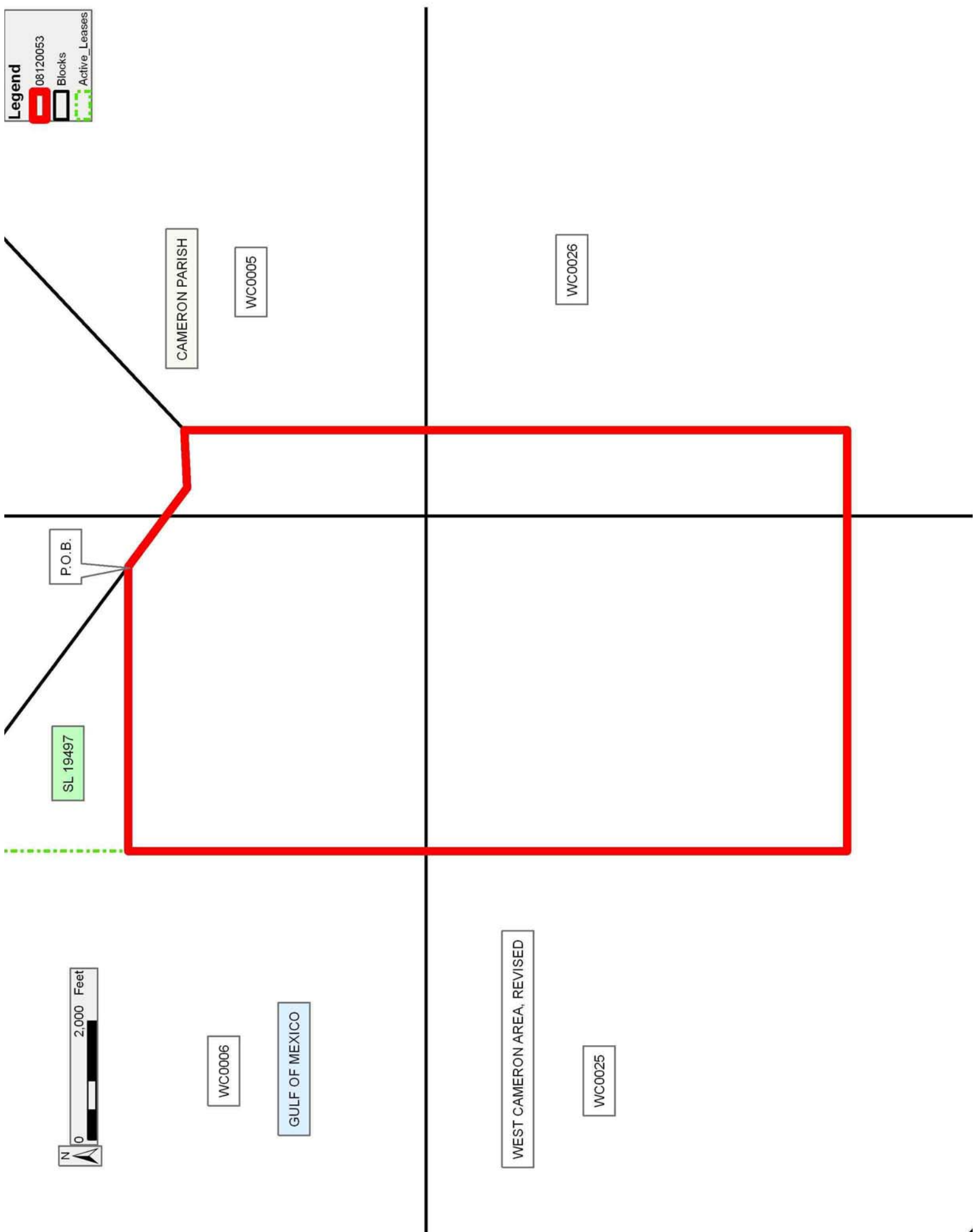
NOTE: It appears, according to our records, that a portion of this Tract is located within the restrictive safety fairway area as set out by the Corps of Engineers, U.S. Army and/or the restrictive anchorage area as set out by the U.S. Coast Guard.

Applicant: THE GULF SHORES COMPANIES, INC.

Bidder	Cash Payment	Price/Acre	Rental	Oil	Gas	Other

**Legend**

- 08120053
- Blocks
- Active\_Leases



**TRACT 40594 - Portion of Block 25, West Cameron Area, Revised, Cameron Parish, Louisiana**

The beds and bottoms of all water bodies belonging to the State of Louisiana located in Block 25, West Cameron Area, Revised, together with any present lands formed by accretion to the shoreline or islands formed therein, located in Cameron Parish, Louisiana, owned by and not presently under mineral lease as of December 10, 2008, from the State of Louisiana, the geographical area of which is more fully described as follows: Beginning at the Northwest corner of Block 25, West Cameron Area, Revised, having Coordinates of X = 1,347,177.57 and Y = 393,790.24; thence East 9,104.61 feet along the North line of said Block 25 to a point having Coordinates of X = 1,356,282.18 and Y = 393,790.24; thence South 7,101.26 feet to a point having Coordinates of X = 1,356,282.18 and Y = 386,688.98; thence East 1,931.48 feet to a point having Coordinates of X = 1,358,213.66 and Y = 386,688.98; thence South 6,617.29 feet to a point on the Three Mile Line, as decreed by the Supreme Court of the United States, as determined by a Special Master appointed therein, in litigation styled *United States v. State of Louisiana et al No. 9 Original*, in 1975, having Coordinates of X = 1,358,213.66 and Y = 380,071.70; thence along the said Three Mile Line the following courses: Northwesterly along an arc to the right having a radius of 18,240.60 feet and a center at X = 1,362,416 and Y = 397,822 to a point having Coordinates of X = 1,348,021 and Y = 386,619; Northwesterly on a straight line to a point having Coordinates of X = 1,347,740 and Y = 386,685 and Northwesterly on a straight line to a point on the West line of said Block 25 having Coordinates of X = 1,347,177.57 and Y = 386,766.95; thence North 7,023.29 feet along the West line of said Block 25 to the point of beginning, containing approximately **2,459.42 acres, LESS AND EXCEPT** that portion thereof, if any, lying seaward of the line three nautical miles from the coast line of Louisiana, as said three mile line has been decreed by the Supreme Court of the United States, as determined by a Special Master appointed therein, in litigation styled **United States v. State of Louisiana et al No. 9 Original**, in 1975, all as more particularly outlined on a plat in the Office of Mineral Resources, Department of Natural Resources. All bearings, distances and coordinates are based on the Louisiana Coordinate System of 1927, (South Zone).

NOTE: The above description of the Tract nominated for lease has been provided and corrected, where required, exclusively by the nomination party. Any mineral lease selected from this Tract and awarded by the Louisiana State Mineral Board shall be without warranty of any kind, either express, implied, or statutory, including, but not limited to, the implied warranties of merchantability and fitness for a particular purpose. Should the mineral lease awarded by the Louisiana State Mineral Board be subsequently modified, cancelled or abrogated due to the existence of conflicting leases, operating agreements, private claims or other future obligations or conditions which may affect all or any portion of the leased Tract, it shall not relieve the Lessee of the obligation to pay any bonus due thereon to the Louisiana State Mineral Board, nor shall

the Louisiana State Mineral Board be obligated to refund any consideration paid by the Lessor prior to such modification, cancellation, or abrogation, including, but not limited to, bonuses, rentals and royalties.

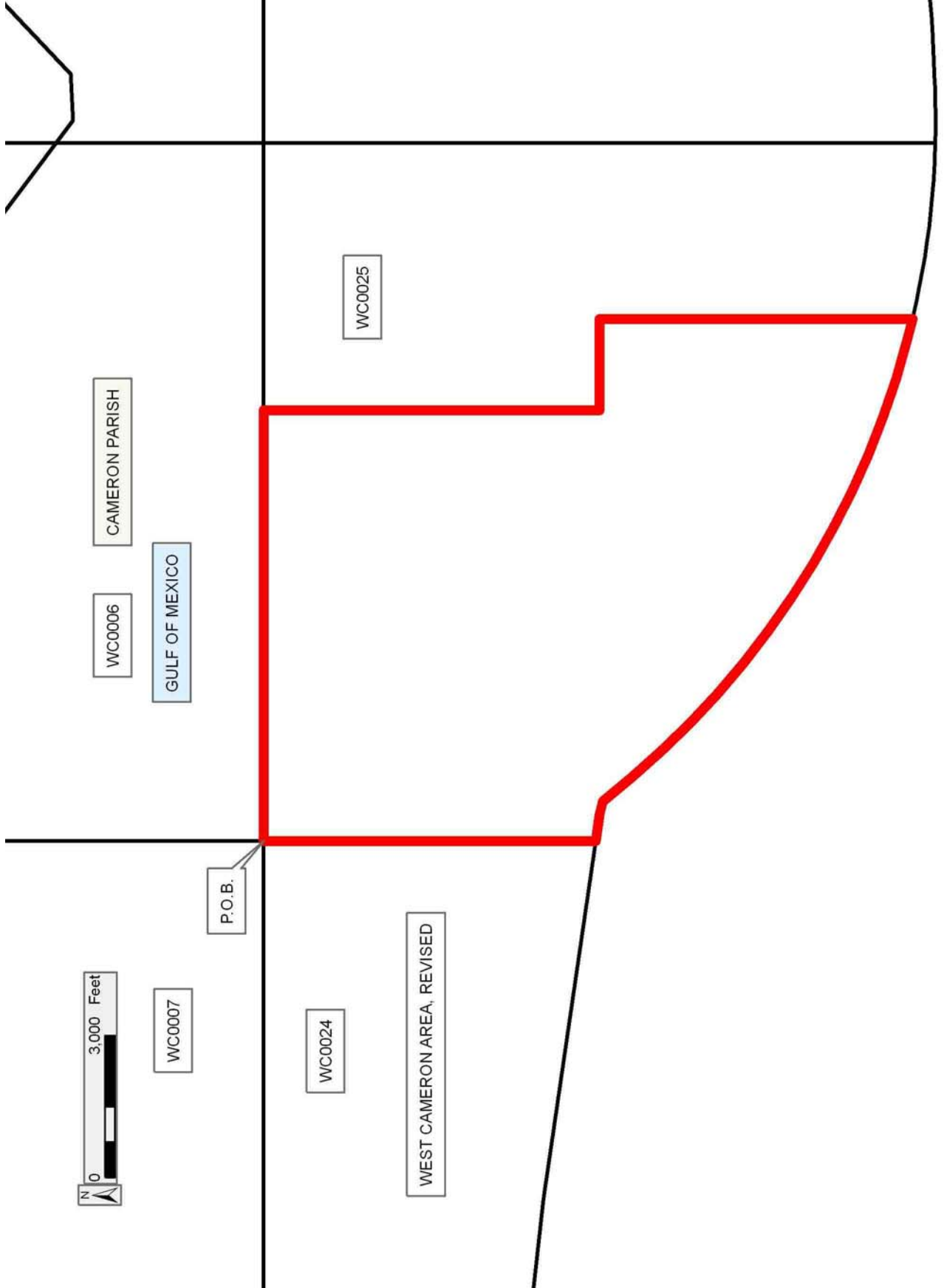
NOTE: The State of Louisiana does hereby reserve, and this lease shall be subject to, the imprescriptible right of surface use in the nature of a servitude in favor of the Department of Natural Resources, including its Offices and Commissions, for the sole purpose of implementing, constructing, servicing and maintaining approved coastal zone management and/or restoration projects. Utilization of any and all rights derived under this lease by the mineral lessee, its agents, successors or assigns, shall not interfere with nor hinder the reasonable surface use by the Department of Natural Resources, its Offices or Commissions, as herein above reserved.

NOTE: It appears, according to our records, that a portion of this Tract is located within the restrictive safety fairway area as set out by the Corps of Engineers, U.S. Army and/or the restrictive anchorage area as set out by the U.S. Coast Guard.

Applicant: THE GULF SHORES COMPANIES, INC.

Bidder	Cash Payment	Price/Acre	Rental	Oil	Gas	Other

Legend  
08120051  
Blocks



**TRACT 40595 - Portion of Block 26, West Cameron Area, Revised, Cameron Parish, Louisiana**

The beds and bottoms of all water bodies belonging to the State of Louisiana located in Block 26, West Cameron Area, Revised, together with any present lands formed by accretion to the shoreline or islands formed therein, located in Cameron Parish, Louisiana, owned by and not presently under mineral lease as of December 10, 2008, from the State of Louisiana, the geographical area of which is more fully described as follows: Beginning at a point on the East line of Block 26, West Cameron Area, Revised, having Coordinates of X = 1,376,693.66 and Y = 389,805.56; thence South 4,417.22 feet to a point on the Three Mile Line, as decreed by the Supreme Court of the United States, as determined by a Special Master appointed therein, in litigation styled *United States v. State of Louisiana et al No. 9 Original*, in 1975, having Coordinates of X = 1,376,693.66 and Y = 385,388.34; thence along the said Three Mile Line the following: Southwesterly along an arc to the right having a radius of 18,240.60 feet and a center at X = 1,363,392 and Y = 397,870 to a point having Coordinates of X = 1,370,813.39 and Y = 381,207.04; thence North 8,598.52 feet to a point having Coordinates of X = 1,370,813.39 and Y = 389,805.56; thence East 5,880.27 feet to the point of beginning, containing approximately **918.38 acres, LESS AND EXCEPT** that portion thereof, if any, lying seaward of the line three nautical miles from the coast line of Louisiana, as said three mile line has been decreed by the Supreme Court of the United States, as determined by a Special Master appointed therein, in litigation styled **United States v. State of Louisiana et al No. 9 Original**, in 1975, all as more particularly outlined on a plat in the Office of Mineral Resources, Department of Natural Resources. All bearings, distances and coordinates are based on the Louisiana Coordinate System of 1927, (South Zone).

NOTE: The above description of the Tract nominated for lease has been provided and corrected, where required, exclusively by the nomination party. Any mineral lease selected from this Tract and awarded by the Louisiana State Mineral Board shall be without warranty of any kind, either express, implied, or statutory, including, but not limited to, the implied warranties of merchantability and fitness for a particular purpose. Should the mineral lease awarded by the Louisiana State Mineral Board be subsequently modified, cancelled or abrogated due to the existence of conflicting leases, operating agreements, private claims or other future obligations or conditions which may affect all or any portion of the leased Tract, it shall not relieve the Lessee of the obligation to pay any bonus due thereon to the Louisiana State Mineral Board, nor shall the Louisiana State Mineral Board be obligated to refund any consideration paid by the Lessor prior to such modification, cancellation, or abrogation, including, but not limited to, bonuses, rentals and royalties.

NOTE: The State of Louisiana does hereby reserve, and this lease shall be subject to, the imprescriptible right of surface use in the nature of a servitude in favor of the Department of Natural Resources, including its



Offices and Commissions, for the sole purpose of implementing, constructing, servicing and maintaining approved coastal zone management and/or restoration projects. Utilization of any and all rights derived under this lease by the mineral lessee, its agents, successors or assigns, shall not interfere with nor hinder the reasonable surface use by the Department of Natural Resources, its Offices or Commissions, as herein above reserved.

Applicant: THE GULF SHORES COMPANIES, INC.

Bidder	Cash Payment	Price/Acre	Rental	Oil	Gas	Other

Legend

08120057

Blocks

WC0027

P.O.B.

WEST CAMERON AREA, REVISED



CAMERON PARISH

WC0026

GULF OF MEXICO

**TRACT 40596 - Portion of Blocks 25, and 26, West Cameron Area, Revised, Cameron Parish, Louisiana**

The beds and bottoms of all water bodies belonging to the State of Louisiana located in Blocks 25, and 26, West Cameron Area, Revised, together with any present lands formed by accretion to the shoreline or islands formed therein, located in Cameron Parish, Louisiana, owned by and not presently under mineral lease as of December 10, 2008, from the State of Louisiana, the geographical area of which is more fully described as follows: Beginning at a point located in Block 26, West Cameron Area, Revised, having Coordinates of X = 1,370,813.39 and Y = 386,688.98; thence South 5,481.95 feet to a point on the Three Mile Line, as decreed by the Supreme Court of the United States, as determined by a Special Master appointed therein, in litigation styled *United States v. State of Louisiana et al No. 9 Original*, in 1975, having Coordinates of X = 1,370,813.39 and Y = 381,207.04; thence along the said Three Mile Line the following: Southwesterly along an arc to the right having a radius of 18,240.60 feet and a center at X = 1,363,392 and Y = 397,870 to a point having Coordinates of X = 1,364,288 and Y = 379,651; Southwesterly on a straight line to a point having Coordinates of X = 1,363,312 and Y = 379,603 and Northwesterly along an arc to the right having a radius of 18,240.60 feet and a center at X = 1,362,416 and Y = 397,822 to a point within Block 25, West Cameron Area, Revised, having Coordinates of X = 1,358,213.66 and Y = 380,071.71; thence North 6,617.28 feet to a point having Coordinates of X = 1,358,213.66 and Y = 386,688.98; thence East 12,599.73 feet to the point of beginning, containing approximately **1,944.06 acres, LESS AND EXCEPT** that portion thereof, if any, lying seaward of the line three nautical miles from the coast line of Louisiana, as said three mile line has been decreed by the Supreme Court of the United States, as determined by a Special Master appointed therein, in litigation styled **United States v. State of Louisiana et al No. 9 Original**, in 1975, all as more particularly outlined on a plat in the Office of Mineral Resources, Department of Natural Resources. All bearings, distances and coordinates are based on the Louisiana Coordinate System of 1927, (South Zone).

NOTE: The above description of the Tract nominated for lease has been provided and corrected, where required, exclusively by the nomination party. Any mineral lease selected from this Tract and awarded by the Louisiana State Mineral Board shall be without warranty of any kind, either express, implied, or statutory, including, but not limited to, the implied warranties of merchantability and fitness for a particular purpose. Should the mineral lease awarded by the Louisiana State Mineral Board be subsequently modified, cancelled or abrogated due to the existence of conflicting leases, operating agreements, private claims or other future obligations or conditions which may affect all or any portion of the leased Tract, it shall not relieve the Lessee of the obligation to pay any bonus due thereon to the Louisiana State Mineral Board, nor shall the Louisiana State Mineral Board be obligated to refund any consideration

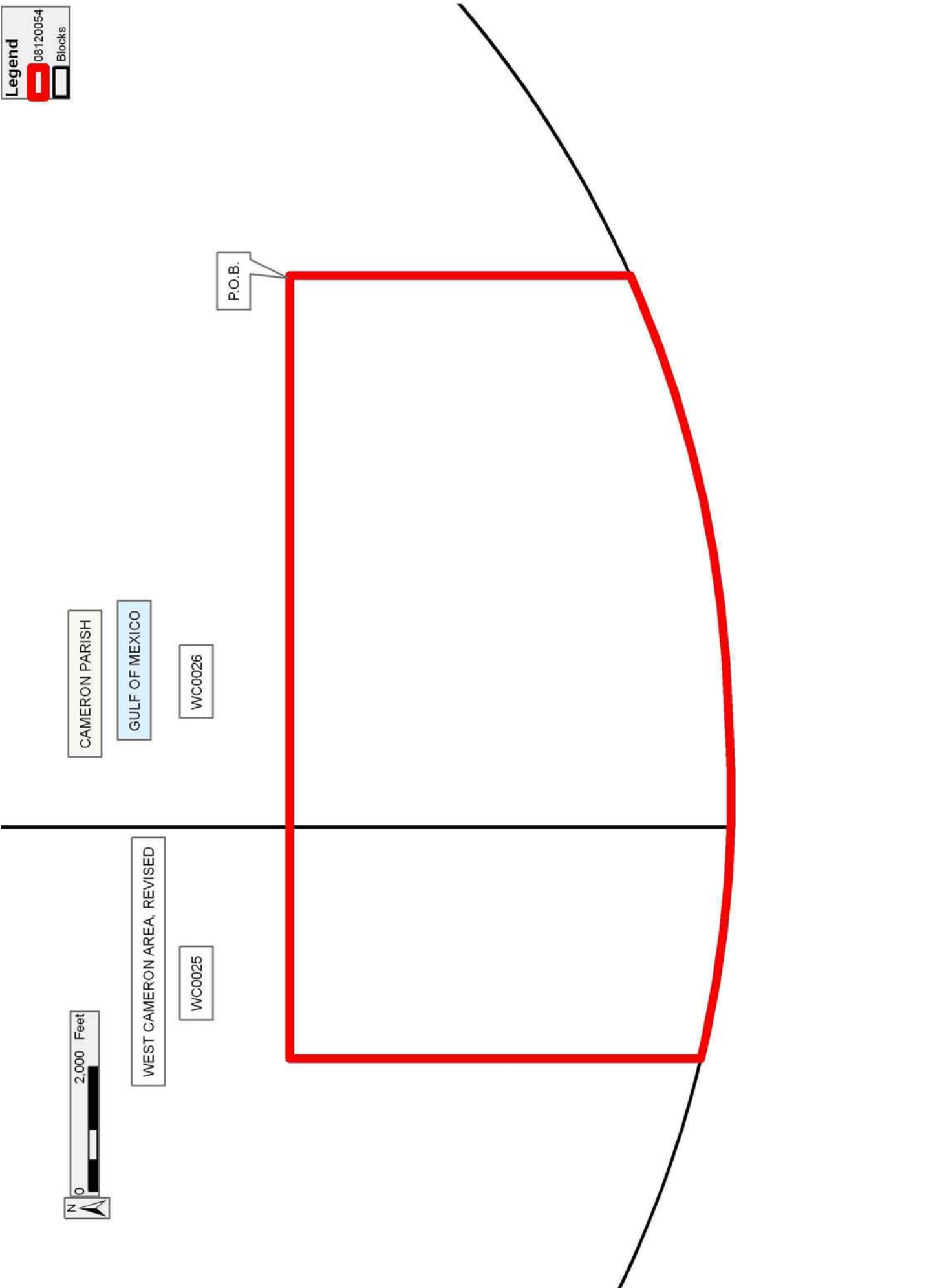
paid by the Lessor prior to such modification, cancellation, or abrogation, including, but not limited to, bonuses, rentals and royalties.

NOTE: The State of Louisiana does hereby reserve, and this lease shall be subject to, the imprescriptible right of surface use in the nature of a servitude in favor of the Department of Natural Resources, including its Offices and Commissions, for the sole purpose of implementing, constructing, servicing and maintaining approved coastal zone management and/or restoration projects. Utilization of any and all rights derived under this lease by the mineral lessee, its agents, successors or assigns, shall not interfere with nor hinder the reasonable surface use by the Department of Natural Resources, its Offices or Commissions, as herein above reserved.

NOTE: It appears, according to our records, that a portion of this Tract is located within the restrictive safety fairway area as set out by the Corps of Engineers, U.S. Army and/or the restrictive anchorage area as set out by the U.S. Coast Guard.

Applicant: THE GULF SHORES COMPANIES, INC.

Bidder	Cash Payment	Price/Acre	Rental	Oil	Gas	Other



**TRACT 40597 - Portion of Blocks 3, and 4, Vermilion Area, Revised, Vermilion Parish, Louisiana**

The beds and bottoms of all water bodies belonging to the State of Louisiana located in Blocks 3, and 4, Vermilion Area, Revised, together with any present lands formed by accretion to the shoreline or islands formed therein, located in Vermilion Parish, Louisiana, owned by and not presently under mineral lease as of December 10, 2008, from the State of Louisiana, the geographical area of which is more fully described as follows: Beginning at a point having Coordinates of X = 1,632,624.12 and Y = 317,582.82, said point being the southeast corner of Block 3 and the southwest corner of Block 4, Vermilion Area, Revised; thence West 3,948.85 feet along the South line of said Block 3, Vermilion Area, Revised, to a point having Coordinates of X = 1,628,675.27 and Y = 317,582.82; thence North 10,399.38 feet to a point having Coordinates of X = 1,628,675.27 and Y = 327,982.20, said point being a point on the Louisiana Coastline, as decreed by the Supreme Court of the United States, as determined by a Special Master appointed therein, in litigation styled *United States v. State of Louisiana et al No. 9 Original*, in 1975; thence along said Louisiana Coast Line the following courses: South 84 degrees 46 minutes 05 seconds East 437.70 feet to a point having Coordinates of X = 1,629,147.00 and Y = 327,939.00; South 82 degrees 32 minutes 18 seconds East 3,506.82 feet to a point having Coordinates of X = 1,632,624.12 and Y = 327,483.59, said point being the northeast corner of said Block 3 and the northwest corner of said Block 4, Vermilion Area, Revised; South 82 degrees 32 minutes 18 seconds East 6,457.56 feet to a point having Coordinates of X = 1,639,027.00 and Y = 326,645.00; and South 80 degrees 13 minutes 07 seconds East 911.95 feet to a point having Coordinates of X = 1,639,925.69 and Y = 326,490.07; thence South 8,907.25 feet to a point having Coordinates of X = 1,639,925.69 and Y = 317,582.82, said point being on the South line of said Block 4, Vermilion Area, Revised; thence West 2,901.57 feet along said South line of said Block 4, Vermilion Area, Revised, to a point having Coordinates of X = 1,637,024.12 and Y = 317,582.82; thence West 4,400.00 feet along said South line of said Block 4, Vermilion Area, Revised, to the point of beginning, containing **2,499.92 acres**, all as more particularly outlined on a plat on file in the Office of Mineral Resources, Department of Natural Resources. All bearings, distances and coordinates are based on Louisiana Coordinate System of 1927, (North or South Zone).

NOTE: The above description of the Tract nominated for lease has been provided and corrected, where required, exclusively by the nomination party. Any mineral lease selected from this Tract and awarded by the Louisiana State Mineral Board shall be without warranty of any kind, either express, implied, or statutory, including, but not limited to, the implied warranties of merchantability and fitness for a particular purpose. Should the mineral lease awarded by the Louisiana State Mineral Board be subsequently modified, cancelled or abrogated due to the existence of conflicting leases, operating agreements, private claims or other future obligations or conditions which may affect all or any portion

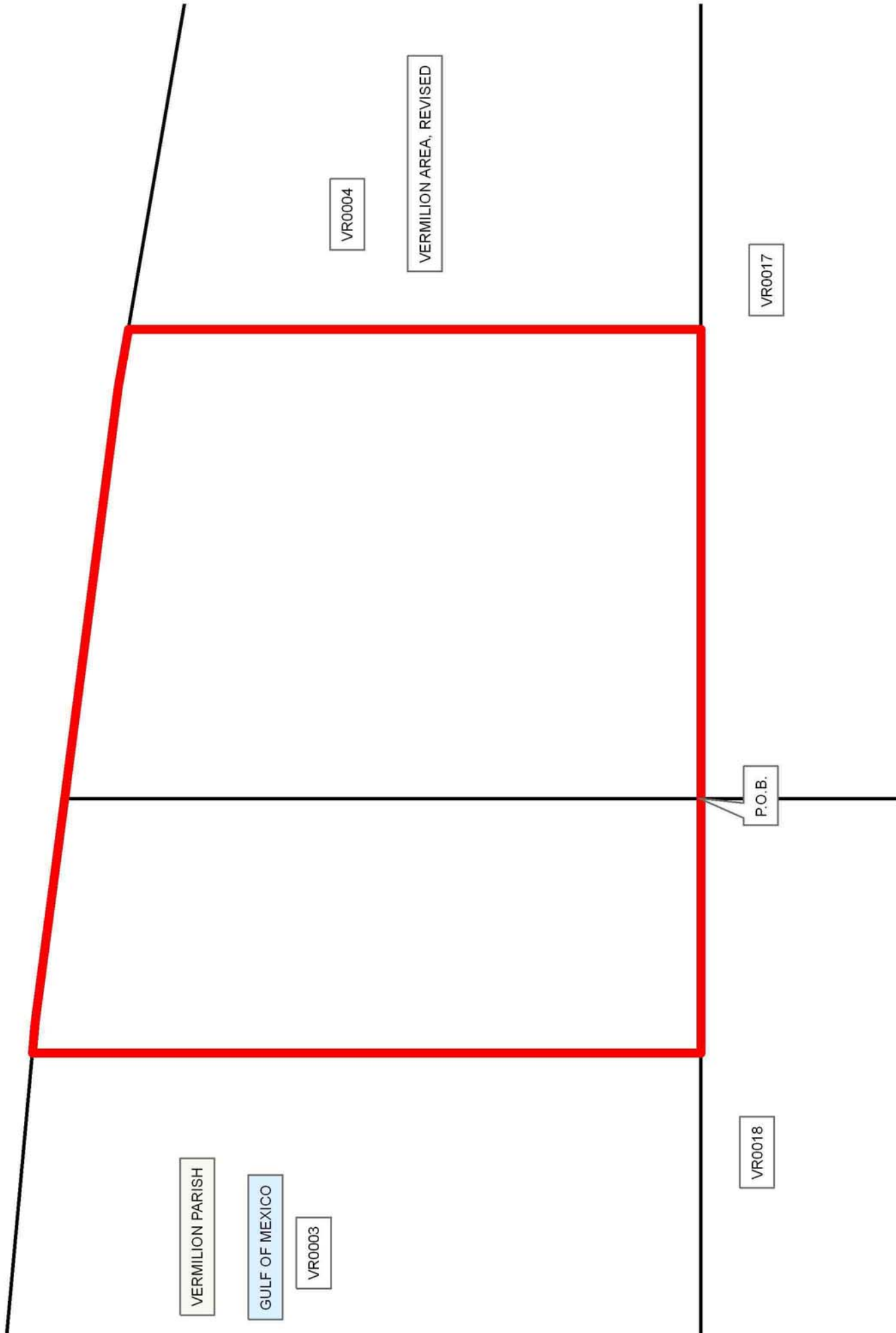
of the leased Tract, it shall not relieve the Lessee of the obligation to pay any bonus due thereon to the Louisiana State Mineral Board, nor shall the Louisiana State Mineral Board be obligated to refund any consideration paid by the Lessor prior to such modification, cancellation, or abrogation, including, but not limited to, bonuses, rentals and royalties.

NOTE: The State of Louisiana does hereby reserve, and this lease shall be subject to, the imprescriptible right of surface use in the nature of a servitude in favor of the Department of Natural Resources, including its Offices and Commissions, for the sole purpose of implementing, constructing, servicing and maintaining approved coastal zone management and/or restoration projects. Utilization of any and all rights derived under this lease by the mineral lessee, its agents, successors or assigns, shall not interfere with nor hinder the reasonable surface use by the Department of Natural Resources, its Offices or Commissions, as herein above reserved.

Applicant: ROBERT A. SCHROEDER, INC.

Bidder	Cash Payment	Price/Acre	Rental	Oil	Gas	Other

Legend  
08120009  
Blocks





**TRACT 40598 - Portion of Blocks 4, and 5, Vermilion Area, Revised, Vermilion Parish, Louisiana**

The beds and bottoms of all water bodies belonging to the State of Louisiana located in Blocks 4, and 5, Vermilion Area, Revised, together with any present lands formed by accretion to the shoreline or islands formed therein, located in Vermilion Parish, Louisiana, owned by and not presently under mineral lease as of December 10, 2008, from the State of Louisiana, the geographical area of which is more fully described as follows: Beginning at a point having Coordinates of X = 1,647,382.17 and Y = 317,582.82, said point being the southeast corner of Block 4, and the southwest corner of Block 5, Vermilion Area, Revised; thence West 7,456.48 feet along the South line of said Block 4 Vermilion Area, Revised, to a point having Coordinates of X = 1,639,925.69 and Y = 317,582.82; thence North 8,907.25 feet to a point having Coordinates of X = 1,639,925.69 and Y = 326,490.07, said point a point on the Louisiana Coastline, as decreed by the Supreme Court of the United States, as determined by a Special Master appointed therein, in litigation styled *United States v. State of Louisiana et al No. 9 Original*, in 1975; thence along said Louisiana Coast Line the following courses: South 80 degrees 13 minutes 07 seconds East 7,566.47 feet to a point having Coordinates of X = 1,647,382.17 and Y = 325,204.61; South 80 degrees 13 minutes 07 seconds East 1,292.62 feet to a point having Coordinates of X = 1,648,656 and Y = 324,985; South 65 degrees 13 minutes 09 seconds East 718.13 feet to a point having Coordinates of X = 1,649,308 and Y = 324,684; South 87 degrees 29 minutes 19 seconds East 912.88 feet to a point having Coordinates of X = 1,650,220 and Y = 324,644; South 73 degrees 51 minutes 02 seconds East 1,118.12 feet to a point having Coordinates of X = 1,651,294 and Y = 324,333; South 74 degrees 45 minutes 31 seconds East 2,213.87 feet to a point having Coordinates of X = 1,653,430 and Y = 323,751; and South 79 degrees 44 minutes 54 seconds East 1,223.78 feet to a point having Coordinates of X = 1,654,634.24 and Y = 323,533.20; thence South 1,693.50 feet to a point having Coordinates of X = 1,654,634.24 and Y = 321,839.70, said point being a northwestern corner of Louisiana State Lease No. 3762, as amended; thence along the western boundary of said Louisiana State Lease No. 3762, as amended, the following courses: South 08 degrees 34 minutes 13 seconds East 1,553.71 feet to a point having Coordinates of X = 1,654,865.78 and Y = 320,303.34; South 08 degrees 34 minutes 13 seconds East 666.75 feet to a point having Coordinates of X = 1,654,965.14 and Y = 319,644.03; South 56 degrees 12 minutes 11 seconds West 2,626.88 feet to a point having Coordinates of X = 1,652,782.17 and Y = 318,182.82; and South 39 degrees 48 minutes 18 seconds West 781.02 feet to a point having Coordinates of X = 1,652,282.18 and Y = 317,582.82, said point being on the south line of said Block 5, Vermilion Area, Revised; thence West 4,900.01 feet along said South line of said Block 5, Vermilion Area, Revised, to the point of beginning, containing **2,499.55 acres**, all as more particularly outlined on a plat on file in the Office of Mineral Resources, Department of Natural Resources. All bearings, distances and coordinates are based on Louisiana Coordinate System of 1927, (North or South Zone).

NOTE: The above description of the Tract nominated for lease has been provided and corrected, where required, exclusively by the nomination party. Any mineral lease selected from this Tract and awarded by the Louisiana State Mineral Board shall be without warranty of any kind, either express, implied, or statutory, including, but not limited to, the implied warranties of merchantability and fitness for a particular purpose. Should the mineral lease awarded by the Louisiana State Mineral Board be subsequently modified, cancelled or abrogated due to the existence of conflicting leases, operating agreements, private claims or other future obligations or conditions which may affect all or any portion of the leased Tract, it shall not relieve the Lessee of the obligation to pay any bonus due thereon to the Louisiana State Mineral Board, nor shall the Louisiana State Mineral Board be obligated to refund any consideration paid by the Lessor prior to such modification, cancellation, or abrogation, including, but not limited to, bonuses, rentals and royalties.

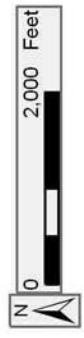
NOTE: The State of Louisiana does hereby reserve, and this lease shall be subject to, the imprescriptible right of surface use in the nature of a servitude in favor of the Department of Natural Resources, including its Offices and Commissions, for the sole purpose of implementing, constructing, servicing and maintaining approved coastal zone management and/or restoration projects. Utilization of any and all rights derived under this lease by the mineral lessee, its agents, successors or assigns, shall not interfere with nor hinder the reasonable surface use by the Department of Natural Resources, its Offices or Commissions, as herein above reserved.

Applicant: ROBERT A. SCHROEDER, INC.

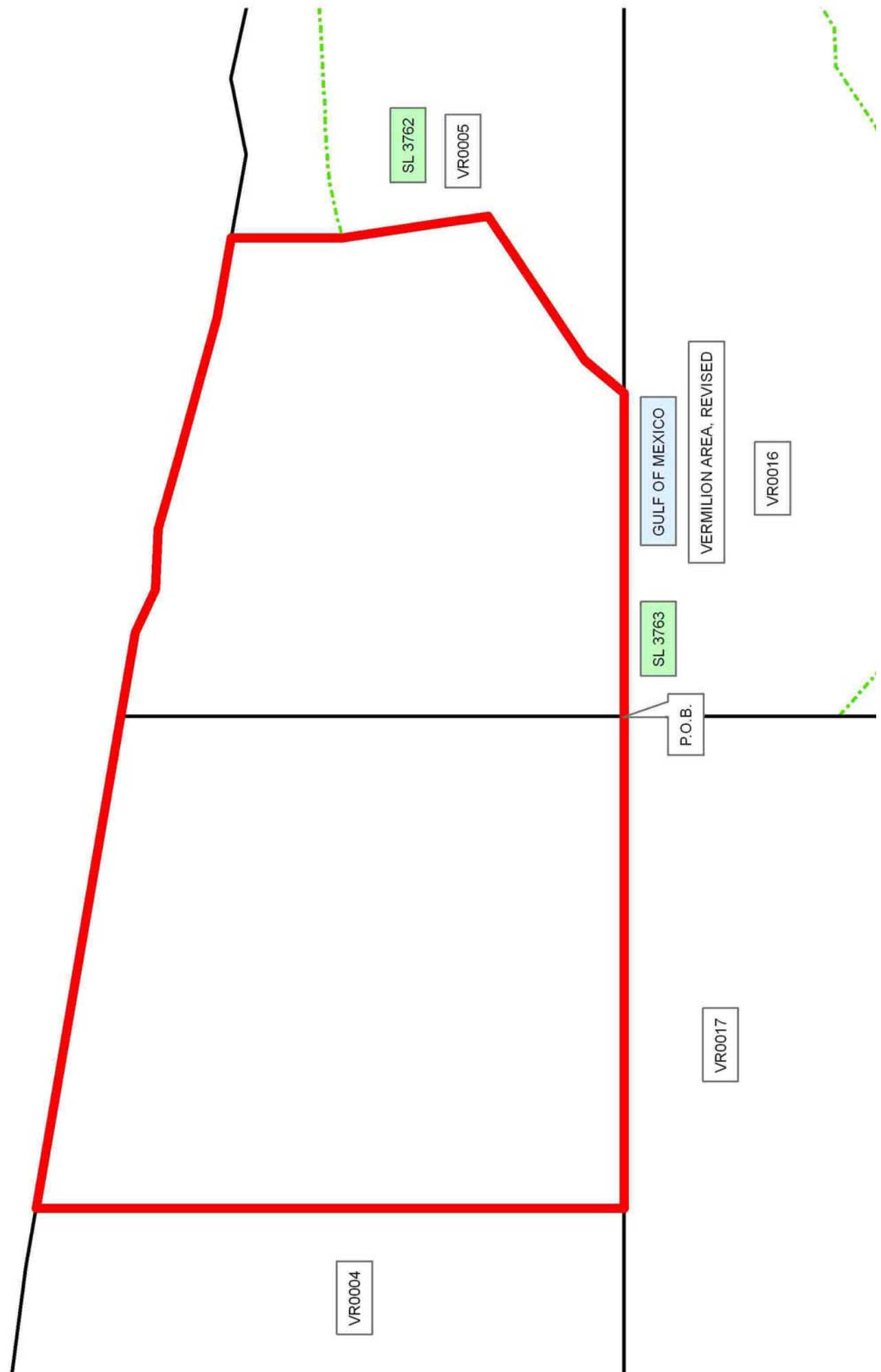
Bidder	Cash Payment	Price/Acre	Rental	Oil	Gas	Other

**Legend**

- 08120008
- Blocks
- Active\_Leases



VERMILION PARISH



**TRACT 40599 - Portion of Block 5, Vermilion Area, Revised, Vermilion Parish, Louisiana**

The beds and bottoms of all water bodies belonging to the State of Louisiana located in Block 5, Vermilion Area, Revised, together with any present lands formed by accretion to the shoreline or islands formed therein, located in Vermilion Parish, Louisiana, owned by and not presently under mineral lease as of December 10, 2008, from the State of Louisiana, the geographical area of which is more fully described as follows: Beginning at a point having Coordinates of X = 1,654,634.24 and Y = 321,839.70, said point being a northwestern corner of Louisiana State Lease No. 3762, as amended; thence North 1,693.50 feet to a point having Coordinates of X = 1,654,634.24 and Y = 323,533.20, said point being on the Louisiana Coastline, as decreed by the Supreme Court of the United States, as determined by a Special Master appointed therein, in litigation styled *United States v. State of Louisiana et al No. 9 Original*, in 1975; thence along said Louisiana Coast Line the following courses: South 79 degrees 44 minutes 54 seconds East 1,282.23 feet to a point having Coordinates of X = 1,655,896 and Y = 323,305; North 78 degrees 29 minutes 23 seconds East 1,177.68 feet to a point having Coordinates of X = 1,657,050 and Y = 323,540; South 77 degrees 32 minutes 14 seconds East 1,881.33 feet to a point having Coordinates of X = 1,658,887 and Y = 323,134; and North 88 degrees 07 minutes 54 seconds East 1,048.87 feet to a point having Coordinates of X = 1,659,935.31 and Y = 323,168.19, said point being on the northern boundary of said Louisiana State Lease No. 3762, as amended; thence along said northern boundary of said Louisiana State Lease No. 3762 the following courses: South 39 degrees 37 minutes 46 seconds West 1,185 feet, more or less, to a point having Coordinates of X = 1,659,179.50 and Y = 322,255.53; South 86 degrees 52 minutes 36 seconds West 2,663.81 feet to a point having Coordinates of X = 1,656,519.65 and Y = 322,110.39; West 220.00 feet to a point having Coordinates of X = 1,656,299.65 and Y = 322,110.39; South 85 degrees 55 minutes 00 seconds West 600.00 feet to a point having Coordinates of X = 1,655,701.17 and Y = 322,067.67; South 83 degrees 30 minutes 00 seconds West 250.00 feet to a point having Coordinates of X = 1,655,452.78 and Y = 322,039.37; South 78 degrees 15 minutes 00 seconds West 500.00 feet to a point having Coordinates of X = 1,654,963.26 and Y = 321,937.55; South 74 degrees 15 minutes 00 seconds West 300.00 feet to a point having Coordinates of X = 1,654,674.52 and Y = 321,856.11; and South 67 degrees 50 minutes 03 seconds West 43.50 feet to the point of beginning, containing **138.22 acres**, all as more particularly outlined on a plat on file in the Office of Mineral Resources, Department of Natural Resources. All bearings, distances and coordinates are based on Louisiana Coordinate System of 1927, (North or South Zone).

NOTE: The above description of the Tract nominated for lease has been provided and corrected, where required, exclusively by the nomination party. Any mineral lease selected from this Tract and awarded by the Louisiana State Mineral Board shall be without warranty of any kind, either express, implied, or statutory, including, but not limited to, the




implied warranties of merchantability and fitness for a particular purpose. Should the mineral lease awarded by the Louisiana State Mineral Board be subsequently modified, cancelled or abrogated due to the existence of conflicting leases, operating agreements, private claims or other future obligations or conditions which may affect all or any portion of the leased Tract, it shall not relieve the Lessee of the obligation to pay any bonus due thereon to the Louisiana State Mineral Board, nor shall the Louisiana State Mineral Board be obligated to refund any consideration paid by the Lessor prior to such modification, cancellation, or abrogation, including, but not limited to, bonuses, rentals and royalties.

NOTE: The State of Louisiana does hereby reserve, and this lease shall be subject to, the imprescriptible right of surface use in the nature of a servitude in favor of the Department of Natural Resources, including its Offices and Commissions, for the sole purpose of implementing, constructing, servicing and maintaining approved coastal zone management and/or restoration projects. Utilization of any and all rights derived under this lease by the mineral lessee, its agents, successors or assigns, shall not interfere with nor hinder the reasonable surface use by the Department of Natural Resources, its Offices or Commissions, as herein above reserved.

Applicant: ROBERT A. SCHROEDER, INC.

Bidder	Cash Payment	Price/Acre	Rental	Oil	Gas	Other

**Legend**

-  08120018
-  Blocks
-  Active\_Leases



VERMILION PARISH

