

SPECIAL NOTICE

On Wednesday, November 12, 2008, the Office of Mineral Resources on behalf of the State Mineral Board advertised in the "Notice of Publication", for receipt of sealed bids on or before **12 noon, on Tuesday, December 9, 2008**, for State Leases to be awarded upon **Tract Nos. 40590 through 40730, inclusive**, at its **December 10, 2008** Lease Sale. Within the said advertisement was an incorrect oyster note. By virtue of this public notice, **Tract Nos. 40627, 40628, 40632 and 40636, Plaquemines Parish, Louisiana**, is hereby corrected as follows:

TRACT 40627- Portion of Blocks 52, and 53, Main Pass Area, Revised, Plaquemines Parish, Louisiana

All of the lands now or formerly constituting the beds and bottoms of all water bodies of every nature and description as to which title is vested in the State of Louisiana, together with all islands arising therein and other lands formed by accretion or by reliction, where allowed by law, excepting tax adjudicated lands, and not presently under mineral lease on December 10, 2008, situated in Plaquemines Parish, Louisiana, and more particularly described as follows: Beginning at the Northeast corner of Block 52, Main Pass Area, Revised, having Coordinates of X = 2,664,850.00 and Y = 266,080.00; thence South 2,750.00 feet along the East line of said Block 52 to the Northwest corner of Block 53, Main Pass Area, Revised, having Coordinates of X = 2,664,850.00 and Y = 263,330.00; thence East 3,993.28 feet along the North line of said Block 53 to the Northwest corner of the Eastern portion of State Lease No. 16667, as amended, having Coordinates of X = 2,668,843.28 and Y = 263,330.00; thence along the boundary of the Eastern portion of said State Lease No. 16667 the following courses: South 15 degrees 03 minutes 28 seconds East 2,795.45 feet to a point having Coordinates of X = 2,669,569.52 and Y = 260,630.54 and North 74 degrees 56 minutes 32 seconds East 2,749.90 feet to its Southeast corner, also being the Southwest corner of State Lease No. 16668 having Coordinates of X = 2,672,225.00 and Y = 261,344.94; thence along the boundary of said State Lease No. 16668 the following courses: North 74 degrees 56 minutes 32 seconds East 1,750.09 feet to a point having Coordinates of X = 2,673,915.00 and Y = 261,799.60 and North 27 degrees 02 minutes 47 seconds East 1,718.32 feet to its Northeast corner, also being a point on the North line of said Block 53 having Coordinates of X = 2,674,696.34 and Y = 263,330.00; thence East 3,358.66 feet along the North line of said Block 53 to a point having Coordinates of X = 2,678,055.00 and Y = 263,330.00; thence South 3,930.00 feet to a point having Coordinates of X = 2,678,055.00 and Y = 259,400.00; thence West 11,905.73 feet to point on the Eastern boundary of State Lease No. 16851 to a point having Coordinates of X = 2,666,149.27 and Y = 259,400.00; thence North 37 degrees 23 minutes 23 seconds East 1,062.47 feet along the Eastern boundary of said State Lease No. 16851 to its Northeast corner, also being the Southeast corner of the Western portion of said State Lease No. 16667 having Coordinates of X = 2,666,794.44 and Y = 260,244.16; thence along the boundary of the Western portion of said State Lease No. 16667 the following courses: North 38 degrees 10 minutes 43 seconds East 1,341.42 feet to a point having Coordinates of X = 2,667,623.59 and Y = 261,298.64; North 57 degrees 56 minutes 23 seconds West 1,314.69 feet to a point having Coordinates of X = 2,666,509.40 and Y = 261,996.49 and South 67 degrees 39 minutes 40 seconds West 1,794.05 feet to its Northwest corner, also being the Northeast corner of State Lease No. 16666, as amended, having Coordinates of X = 2,664,850.00 and Y = 261,314.60; thence South 67

degrees 39 minutes 40 seconds West 1,491.47 feet along the Northern boundary of said State Lease No. 16666 to a point on the Northern boundary of said State Lease No. 16849, as amended, having Coordinates of X = 2,663,470.46 and Y = 260,747.72; thence North 81 degrees 23 minutes 08 seconds West 1,397.22 feet along the Northern boundary of said State Lease No. 16849 to its Northwest corner having Coordinates of X = 2,662,089.00 and Y = 260,957.00; thence North 09 degrees 17 minutes 08 seconds East 2,243.50 feet to the Southeast corner of State Lease No. 16664 having Coordinates of X = 2,662,451.00 and Y = 263,171.10; thence North 03 degrees 23 minutes 02 seconds West 2,913.98 feet along the Eastern boundary of said State Lease No. 16664 to its Northeast corner, also being a point on the North line of said Block 52 having Coordinates of X = 2,662,279.00 and Y = 266,080.00; thence East 2,571.00 feet along the North line of said Block 52 to the point of beginning, containing approximately **1,131.15 acres**, all as more particularly outlined on a plat on file in the Office of Mineral Resources, Department of Natural Resources. All bearings, distances and coordinates are based on Louisiana Coordinate System of 1927, (North or South Zone), where applicable.

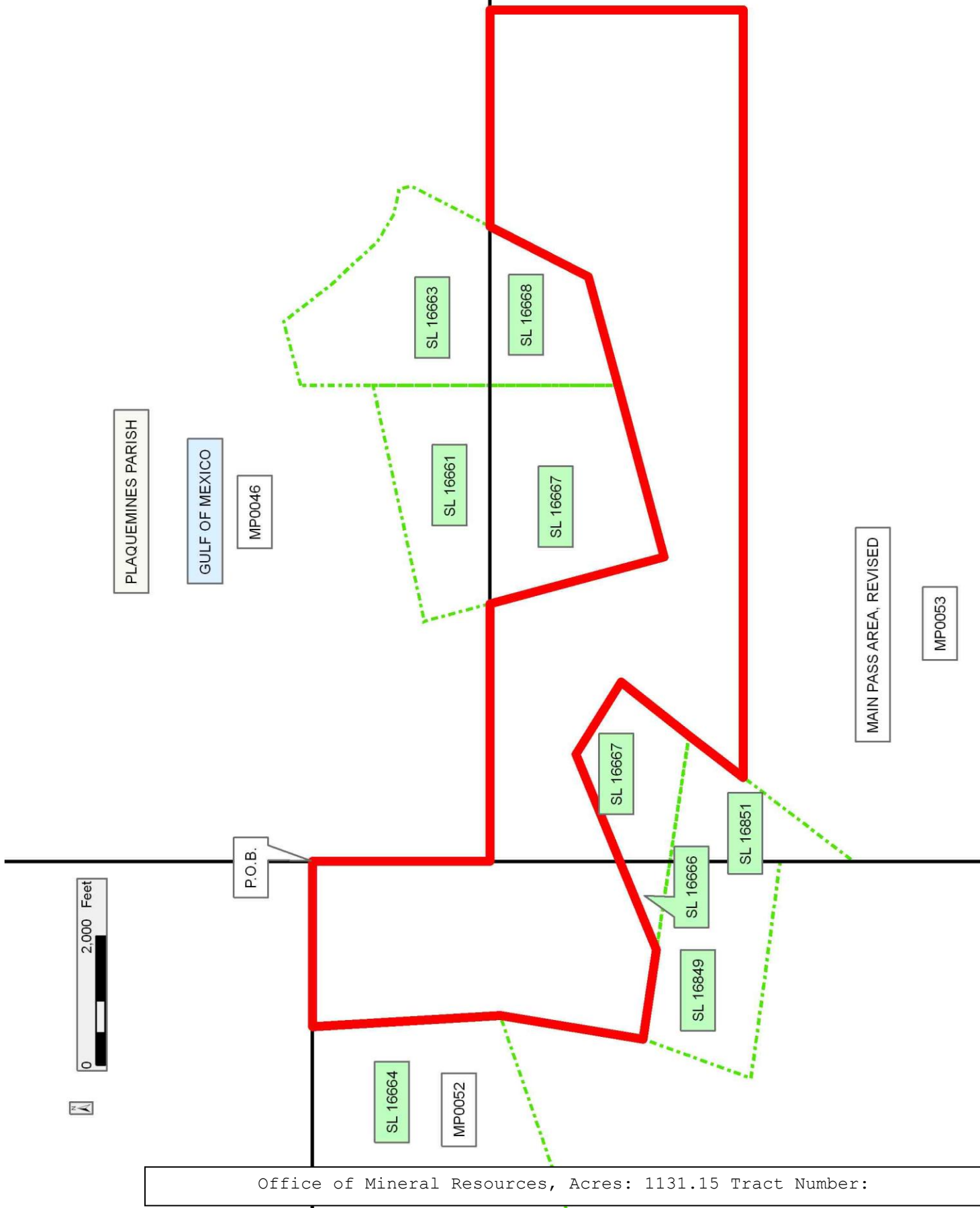
NOTE: The above description of the Tract nominated for lease has been provided and corrected, where required, exclusively by the nomination party. Any mineral lease selected from this Tract and awarded by the Louisiana State Mineral Board shall be without warranty of any kind, either express, implied, or statutory, including, but not limited to, the implied warranties of merchantability and fitness for a particular purpose. Should the mineral lease awarded by the Louisiana State Mineral Board be subsequently modified, cancelled or abrogated due to the existence of conflicting leases, operating agreements, private claims or other future obligations or conditions which may affect all or any portion of the leased Tract, it shall not relieve the Lessee of the obligation to pay any bonus due thereon to the Louisiana State Mineral Board, nor shall the Louisiana State Mineral Board be obligated to refund any consideration paid by the Lessor prior to such modification, cancellation, or abrogation, including, but not limited to, bonuses, rentals and royalties.

NOTE: The Department of Wildlife and Fisheries has designated certain areas in the coastal waters of the State of Louisiana as Oyster Seed Bed Areas. The exact location of those Seed Bed Areas must be obtained from the Department of Wildlife and Fisheries and any work done under a mineral lease from the State of Louisiana may necessarily be conducted in conformity with the rules and regulations promulgated by the said Department of Wildlife and Fisheries for Oyster Seed Bed Areas.

Applicant: ROBERT A. SCHROEDER, INC.

Bidder	Cash Payment	Price/Acre	Rental	Oil	Gas	Other

Legend
0812L
Block
Active



Office of Mineral Resources, Acres: 1131.15 Tract Number:

TRACT 40628- Portion of Block 52, Main Pass Area, Revised, Plaquemines Parish, Louisiana

All of the lands now or formerly constituting the beds and bottoms of all water bodies of every nature and description as to which title is vested in the State of Louisiana, together with all islands arising therein and other lands formed by accretion or by reliction, where allowed by law, excepting tax adjudicated lands, and not presently under mineral lease on December 10, 2008, situated in Plaquemines Parish, Louisiana, and more particularly described as follows: Beginning at the Southernmost Southwest corner of State Lease No. 16664 having Coordinates of X = 2,656,904.00 and Y = 261,271.20; thence South 71 degrees 05 minutes 36 seconds West approximately 3,754 feet to a point of intersection with the boundary of State Lease No. 195, as amended; thence along the boundary of said State Lease No. 195 the following: Northwesterly approximately 496 feet to a point and Westerly approximately 2,964 feet to a point of intersection with a North-South line having a Coordinate of X = 2,650,026.98; thence North approximately 3,007 feet along said line to a point on the South boundary of State Lease No. 19489 having Coordinates of X = 2,650,026.98 and Y = 263,350.00; thence along the boundary of said State Lease No. 19489 the following courses: East 3,374.02 feet to a point having Coordinates of X = 2,653,401.00 and Y = 263,350.00 and North 1,532.93 feet to a point on a Southern boundary of said State Lease No. 16664 having Coordinates of X = 2,653,401.00 and Y = 264,882.93; thence along the boundary of said State Lease No. 16664 the following courses: North 87 degrees 38 minutes 44 seconds East 3,309.79 feet to a point having Coordinates of X = 2,656,708.00 and Y = 265,018.90 and South 02 degrees 59 minutes 38 seconds East 3,752.82 feet to the point of beginning, **LESS AND EXCEPT** that portion, if any, of State Lease No. 195, as amended, which may lie within the above described tract, containing approximately **569 acres**, all as more particularly outlined on a plat on file in the Office of Mineral Resources, Department of Natural Resources. All bearings, distances and coordinates are based on Louisiana Coordinate System of 1927, (North or South Zone), where applicable.

NOTE: The above description of the Tract nominated for lease has been provided and corrected, where required, exclusively by the nomination party. Any mineral lease selected from this Tract and awarded by the Louisiana State Mineral Board shall be without warranty of any kind, either express, implied, or statutory, including, but not limited to, the implied warranties of merchantability and fitness for a particular purpose. Should the mineral lease awarded by the Louisiana State Mineral Board be subsequently modified, cancelled or abrogated due to the existence of conflicting leases, operating agreements, private claims or other future obligations or conditions which may affect all or any portion of the leased Tract, it shall not relieve the Lessee of the obligation to pay any bonus due thereon to the Louisiana State Mineral Board, nor shall the Louisiana State Mineral Board be obligated to refund any consideration paid by the Lessor prior to such modification, cancellation, or abrogation, including, but not limited to, bonuses, rentals and royalties.

NOTE: The Department of Wildlife and Fisheries has designated certain areas in the coastal waters of the State of Louisiana as Oyster Seed Bed Areas. The exact location of those Seed Bed Areas must be obtained from the Department of Wildlife and Fisheries and any work done under a mineral lease from the State of Louisiana may necessarily be conducted in conformity with the rules and regulations promulgated by the said Department of Wildlife and Fisheries for Oyster Seed Bed Areas.

NOTE: The State of Louisiana does hereby reserve, and this lease shall be subject to, the imprescriptible right of surface use in the nature

of a servitude in favor of the Department of Natural Resources, including its Offices and Commissions, for the sole purpose of implementing, constructing, servicing and maintaining approved coastal zone management and/or restoration projects. Utilization of any and all rights derived under this lease by the mineral lessee, its agents, successors or assigns, shall not interfere with nor hinder the reasonable surface use by the Department of Natural Resources, its Offices or Commissions, as herein above reserved.

Applicant: ROBERT A. SCHROEDER, INC.

Bidder	Cash Payment	Price/Acre	Rental	Oil	Gas	Other

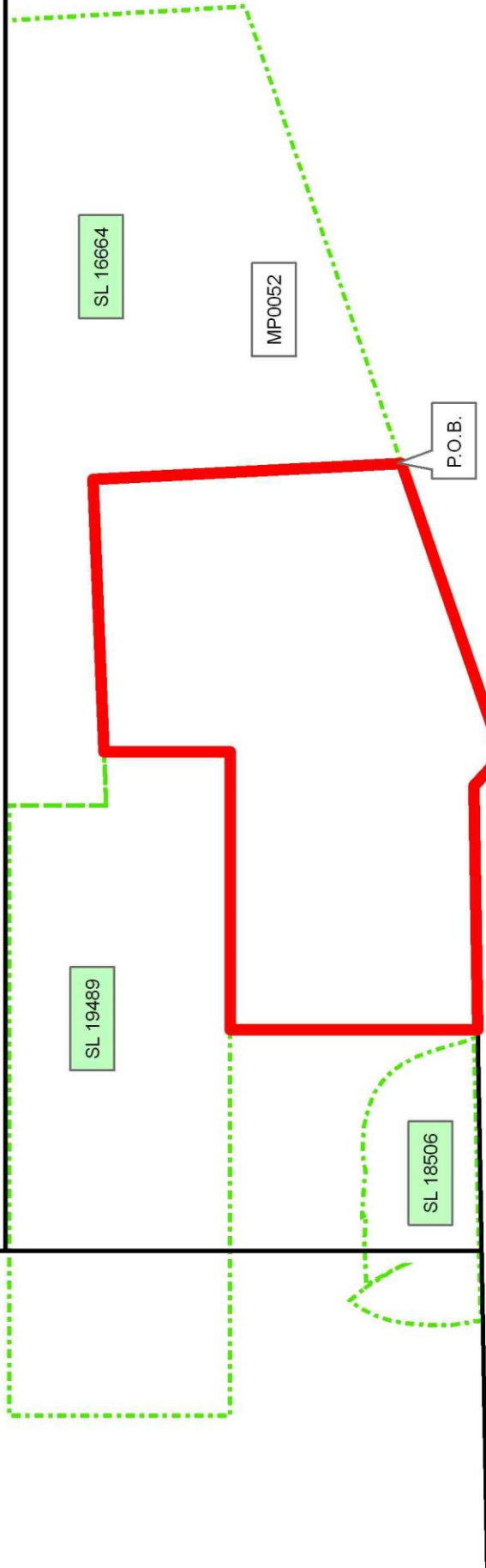
Legend
0812/ Block Activ



PLAQUEMINES PARISH

MP0047

GULF OF MEXICO



MAIN PASS AREA, REVISED

Office of Mineral Resources, Acres: 569 Tract Number:

TRACT 40632- Portion of Block 52, Main Pass Area, Revised, Plaquemines Parish, Louisiana

All of the lands now or formerly constituting the beds and bottoms of all water bodies of every nature and description as to which title is vested in the State of Louisiana, together with all islands arising therein and other lands formed by accretion or by reliction, where allowed by law, excepting tax adjudicated lands, and not presently under mineral lease on December 10, 2008, situated in Plaquemines Parish, Louisiana, and more particularly described as follows: Beginning at the Southernmost corner of State Lease No. 16850, also being the Northernmost corner State Lease No. 11188, as amended, having Coordinates of X = 2,664,850.00 and Y = 257,700.00; thence along the boundary of said State Lease No. 11188 the following courses: South 37 degrees 23 minutes 49 seconds West 4,420.00 feet to a point having Coordinates of X = 2,662,165.59 and Y = 254,188.54 and South 36 degrees 47 minutes 09 seconds East approximately 4,492 feet to a point of intersection with the boundary of State Lease No. 195, as amended; thence along the boundary of said State Lease No. 195 the following: Southwesterly approximately 1,113 feet and Northwesterly approximately 14,308 feet to a point of intersection with a line having a bearing of South 71 degrees 05 minutes 36 seconds West and commencing at a point having Coordinates of X = 2,656,904.00 and Y = 261,271.20; thence North 71 degrees 05 minutes 36 seconds East approximately 3,754 feet along said line to said point being the Southernmost Southwest corner of State Lease No. 16664 having Coordinates of X = 2,656,904.00 and Y = 261,271.20; thence North 71 degrees 05 minutes 36 seconds East 5,863.35 feet along the Southern boundary of said State Lease No. 16664 to its Southeast corner having Coordinates of X = 2,662,451.00 and Y = 263,171.10; thence South 09 degrees 17 minutes 07 seconds West 2,243.50 feet to the Northwest corner of State Lease No. 16849, as amended, having Coordinates of X = 2,662,089.00 and Y = 260,957.00; thence along the boundary of said State Lease No. 16849 the following courses: South 19 degrees 56 minutes 33 seconds West 1,781.60 feet to a point having Coordinates of X = 2,661,481.34 and Y = 259,282.23; South 82 degrees 11 minutes 24 seconds East 1,464.54 feet to a point having Coordinates of X = 2,662,932.30 and Y = 259,083.22 and South 53 degrees 29 minutes 55 seconds East 0.62 feet to the Westernmost corner of said State Lease No. 16850 having Coordinates of X = 2,662,932.80 and Y = 259,082.85; thence South 54 degrees 11 minutes 51 seconds East 2,363.88 feet along the Southern boundary of said State Lease No. 16850 to the point of beginning, **LESS AND EXCEPT** that portion, if any, of State Lease No. 195, as amended, which may lie within the above described tract, containing approximately **1,393 acres**, all as more particularly outlined on a plat on file in the Office of Mineral Resources, Department of Natural Resources. All bearings, distances and coordinates are based on Louisiana Coordinate System of 1927, (North or South Zone), where applicable.

NOTE: The above description of the Tract nominated for lease has been provided and corrected, where required, exclusively by the nomination party. Any mineral lease selected from this Tract and awarded by the Louisiana State Mineral Board shall be without warranty of any kind, either express, implied, or statutory, including, but not limited to, the implied warranties of merchantability and fitness for a particular purpose. Should the mineral lease awarded by the Louisiana State Mineral Board be subsequently modified, cancelled or abrogated due to the existence of conflicting leases, operating agreements, private claims or other future obligations or conditions which may affect all or any portion of the leased Tract, it shall not relieve the Lessee of the obligation to pay any bonus due thereon to the Louisiana State Mineral Board, nor shall the Louisiana State Mineral Board be obligated to refund any consideration paid by the Lessor prior to such

modification, cancellation, or abrogation, including, but not limited to, bonuses, rentals and royalties.

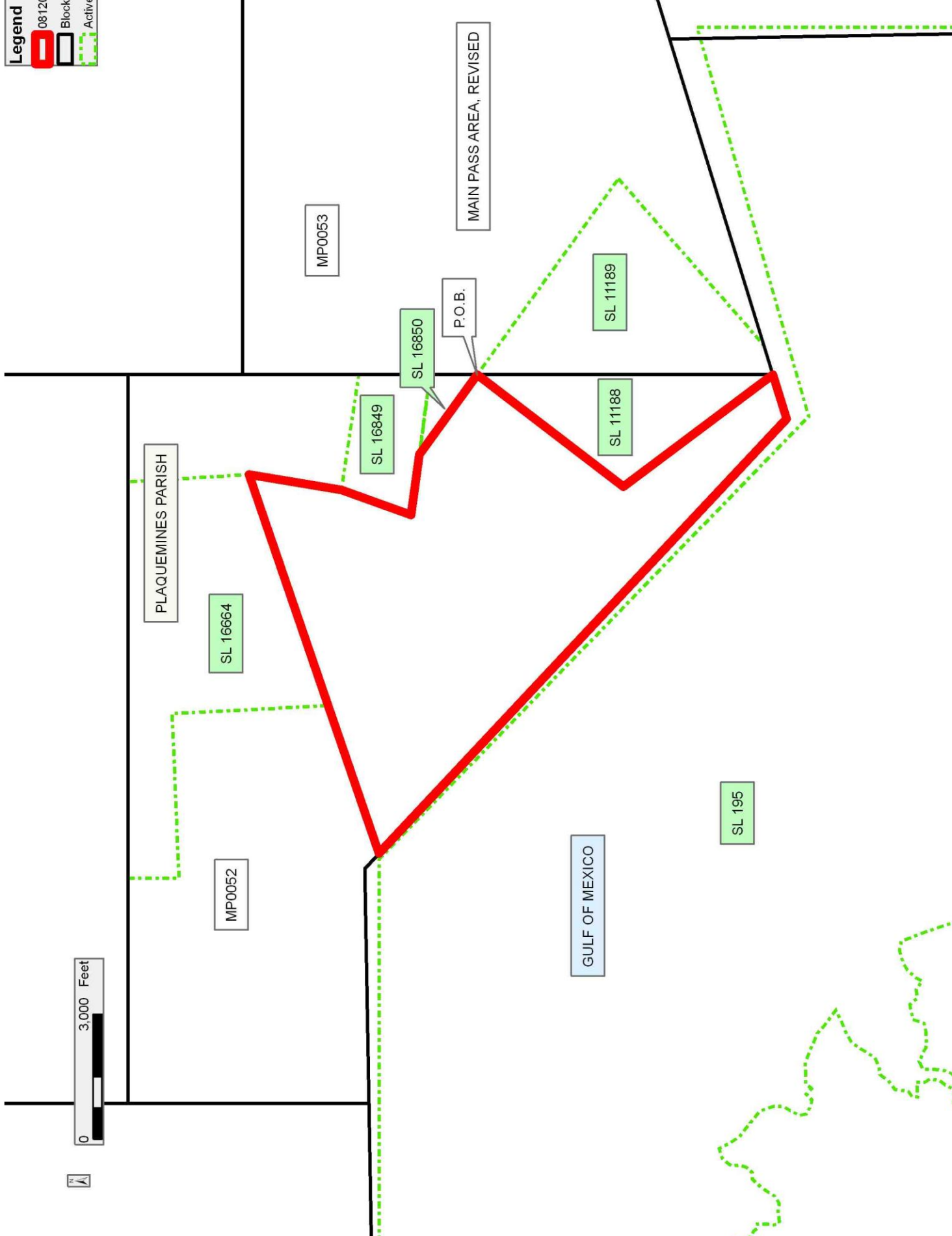
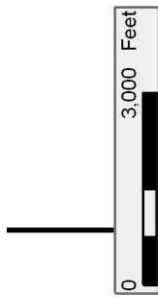
NOTE: The Department of Wildlife and Fisheries has designated certain areas in the coastal waters of the State of Louisiana as Oyster Seed Bed Areas. The exact location of those Seed Bed Areas must be obtained from the Department of Wildlife and Fisheries and any work done under a mineral lease from the State of Louisiana may necessarily be conducted in conformity with the rules and regulations promulgated by the said Department of Wildlife and Fisheries for Oyster Seed Bed Areas.

NOTE: The State of Louisiana does hereby reserve, and this lease shall be subject to, the imprescriptible right of surface use in the nature of a servitude in favor of the Department of Natural Resources, including its Offices and Commissions, for the sole purpose of implementing, constructing, servicing and maintaining approved coastal zone management and/or restoration projects. Utilization of any and all rights derived under this lease by the mineral lessee, its agents, successors or assigns, shall not interfere with nor hinder the reasonable surface use by the Department of Natural Resources, its Offices or Commissions, as herein above reserved.

Applicant: ROBERT A. SCHROEDER, INC.

Bidder	Cash Payment	Price/Acre	Rental	Oil	Gas	Other

Legend
0812/ Block Activ



Office of Mineral Resources, Acres: 1393 Tract Number:

TRACT 40636- Portion of Blocks 53, and 85, Main Pass Area, Revised, Plaquemines Parish, Louisiana

All of the lands now or formerly constituting the beds and bottoms of all water bodies of every nature and description as to which title is vested in the State of Louisiana, together with all islands arising therein and other lands formed by accretion or by reliction, where allowed by law, excepting tax adjudicated lands, and not presently under mineral lease on December 10, 2008, situated in Plaquemines Parish, Louisiana, and more particularly described as follows: Beginning at the Northernmost corner of State Lease No. 11189, as amended, also being the Southernmost corner of State Lease No. 16851 having Coordinates of X = 2,664,850.00 and Y = 257,700.00; thence North 37 degrees 23 minutes 23 seconds East 2,139.65 feet along the Southeastern boundary of said State Lease No. 16851 to a point having Coordinates of X = 2,666,149.27 and Y = 259,400.00; thence East 11,905.73 feet to a point having Coordinates of X = 2,678,055.00 and Y = 259,400.00; thence South 12,915.00 feet to a point having Coordinates of X = 2,678,055.00 and Y = 246,485.00; thence West approximately 5,007 feet to a point of intersection with the Eastern boundary of State Lease No. 195, as amended, having a Coordinate of Y = 246,485.00; thence along the boundary of said State Lease No. 195 the following: Northerly approximately 6,550 feet to a corner of said State Lease No. 195 and Southwesterly approximately 7,710 feet to a point on the Southeastern boundary of said State Lease No. 11189; thence along the boundary of said State Lease No. 11189 the following courses: North 48 degrees 54 minutes 31 seconds East approximately 5,328 feet to a point having Coordinates of X = 2,669,561.48 and Y = 254,301.65 and North 54 degrees 11 minutes 51 seconds West 5,809.20 feet to the point of beginning, **LESS AND EXCEPT** that portion, if any, of State Lease No. 195, as amended, which may lie within the above described tract, containing approximately **2,448 acres**, all as more particularly outlined on a plat on file in the Office of Mineral Resources, Department of Natural Resources. All bearings, distances and coordinates are based on Louisiana Coordinate System of 1927, (North or South Zone), where applicable.

NOTE: The above description of the Tract nominated for lease has been provided and corrected, where required, exclusively by the nomination party. Any mineral lease selected from this Tract and awarded by the Louisiana State Mineral Board shall be without warranty of any kind, either express, implied, or statutory, including, but not limited to, the implied warranties of merchantability and fitness for a particular purpose. Should the mineral lease awarded by the Louisiana State Mineral Board be subsequently modified, cancelled or abrogated due to the existence of conflicting leases, operating agreements, private claims or other future obligations or conditions which may affect all or any portion of the leased Tract, it shall not relieve the Lessee of the obligation to pay any bonus due thereon to the Louisiana State Mineral Board, nor shall the Louisiana State Mineral Board be obligated to refund any consideration paid by the Lessor prior to such modification, cancellation, or abrogation, including, but not limited to, bonuses, rentals and royalties.

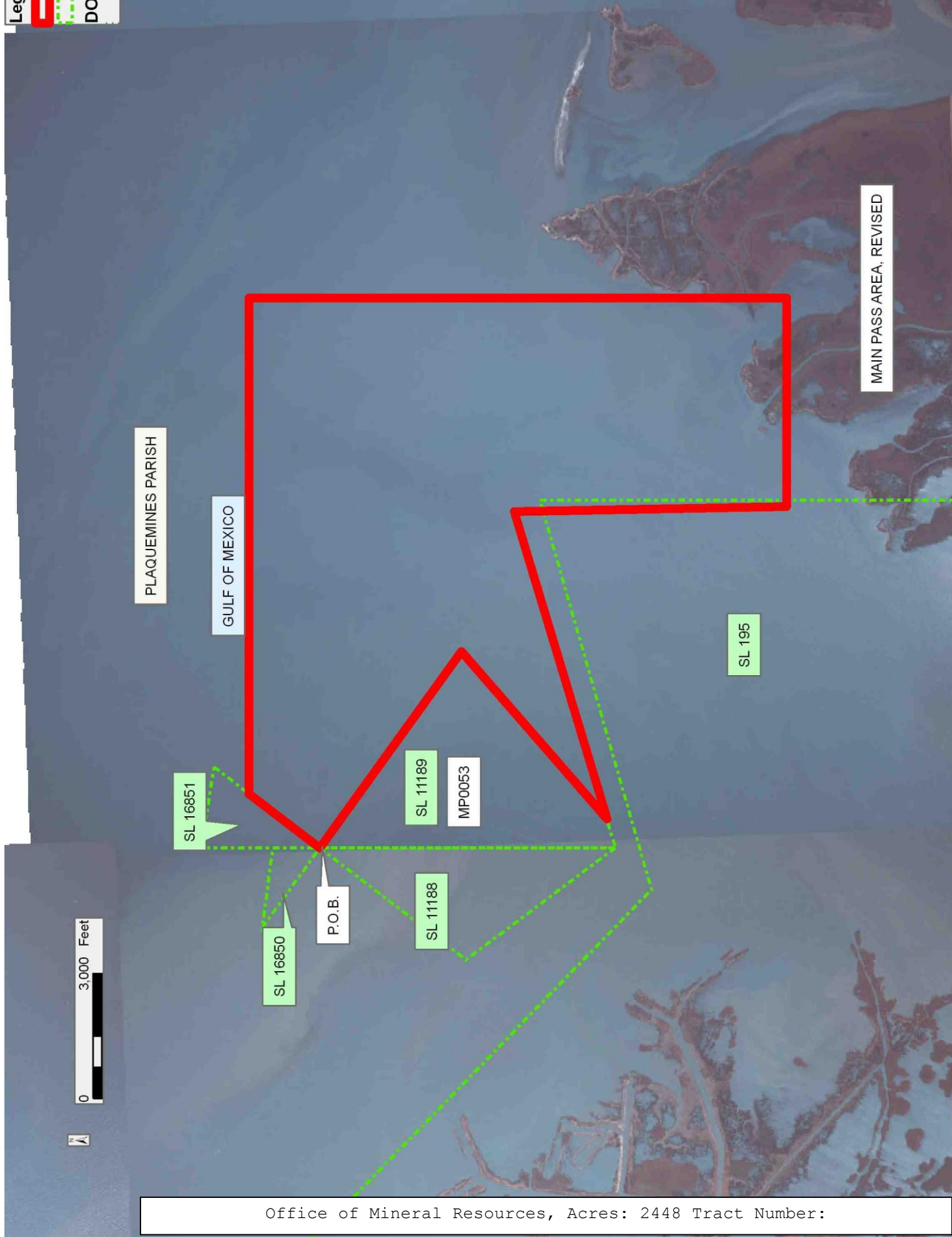
NOTE: The Department of Wildlife and Fisheries has designated certain areas in the coastal waters of the State of Louisiana as Oyster Seed Bed Areas. The exact location of those Seed Bed Areas must be obtained from the Department of Wildlife and Fisheries and any work done under a mineral lease from the State of Louisiana may necessarily be conducted in conformity with the rules and regulations promulgated by the said Department of Wildlife and Fisheries for Oyster Seed Bed Areas.

NOTE: The State of Louisiana does hereby reserve, and this lease shall be subject to, the imprescriptible right of surface use in the nature

of a servitude in favor of the Department of Natural Resources, including its Offices and Commissions, for the sole purpose of implementing, constructing, servicing and maintaining approved coastal zone management and/or restoration projects. Utilization of any and all rights derived under this lease by the mineral lessee, its agents, successors or assigns, shall not interfere with nor hinder the reasonable surface use by the Department of Natural Resources, its Offices or Commissions, as herein above reserved.

Applicant: ROBERT A. SCHROEDER, INC.

Bidder	Cash Payment	Price/Acre	Rental	Oil	Gas	Other



Office of Mineral Resources, Acres: 2448 Tract Number: