

TRACT 39522 - Cameron Parish, Louisiana

All of the lands now or formerly constituting the beds and bottoms of all water bodies of every nature and description as to which title is vested in the State of Louisiana, together with all islands arising therein and other lands formed by accretion or by reliction, where allowed by law, excepting tax adjudicated lands, and not presently under mineral lease on December 12, 2007, situated in Cameron Parish, Louisiana, and more particularly described as follows: Beginning at the Northwest corner of State Lease No. 17462, as amended, having Coordinates of X = 1,191,293.79 and Y = 402,633.65; thence South 01 degrees 17 minutes 52 seconds West 3,105.82 feet along the West boundary of said State Lease No. 17462, as amended, to a point on the Texas Louisiana boundary having Coordinates of X = 1,191,223.45 and Y = 399,528.63; thence along the Texas Louisiana boundary the following courses: North 72 degrees 32 minutes 26 seconds West 637.84 feet to a point having Coordinates of X = 1,190,615.00 and Y = 399,720.00; North 65 degrees 00 minutes 09 seconds West 899.24 feet to a point having Coordinates of X = 1,189,800.00 and Y = 400,100.00; North 59 degrees 33 minutes 13 seconds West 759.77 feet to a point having Coordinates of X = 1,189,145.00 and Y = 400,485.00; North 42 degrees 37 minutes 22 seconds West 1,159.24 feet to a point having Coordinates of X = 1,188,360.00 and Y = 401,338.00; North 12 degrees 45 minutes 31 seconds West 1,109.39 feet to a point having Coordinates of X = 1,188,115.00 and Y = 402,420.00; North 03 degrees 26 minutes 19 seconds West 287.49 feet to a point having Coordinates of X = 1,188,097.76 and Y = 402,706.97; thence South 88 degrees 41 minutes 09 seconds East 3,196.87 feet to the point of beginning, containing approximately **104 acres, LESS AND EXCEPT** that portion thereof, if any, located West of the boundary line between the States of Texas and Louisiana as determined by the report of the Special Master and adjudicated by the Supreme Court of the United States in litigation styled **Texas v. Louisiana, et al No. 36 Original**, or as otherwise approved by said court, all as more particularly outlined on a plat on file in the Office of Mineral Resources, Department of Natural Resources. All bearings, distances and coordinates are based on Louisiana Coordinate System of 1927, (North or South Zone), where applicable.

NOTE: The above description of the Tract nominated for lease has been provided and corrected, where required, exclusively by the nomination party. Any mineral lease selected from this Tract and awarded by the Louisiana State Mineral Board shall be without warranty of any kind, either express, implied, or statutory, including, but not limited to, the implied warranties of merchantability and fitness for a particular purpose. Should the mineral lease awarded by the Louisiana State Mineral Board be subsequently modified, cancelled or abrogated due to the existence of conflicting leases, operating agreements, private claims or other future obligations or conditions which may affect all or any portion of the leased Tract, it shall not relieve the Lessee of the obligation to pay any bonus due thereon to the Louisiana State Mineral Board, nor shall the Louisiana State Mineral Board be obligated to refund any consideration paid by the Lessor prior to such modification, cancellation, or abrogation, including, but not limited to, bonuses, rentals and royalties.

NOTE: The State of Louisiana does hereby reserve, and this lease shall be subject to, the imprescriptible right of surface use in the nature of a servitude in favor of the Department of Natural Resources, including its Offices and Commissions, for the sole purpose of implementing, constructing, servicing and maintaining approved coastal zone management and/or restoration projects. Utilization of any and all rights derived under this lease by the mineral lessee, its agents, successors or assigns, shall not interfere with nor hinder the reasonable surface use by the Department of Natural Resources, its Offices or Commissions, as herein above reserved.

Applicant: STARKS OIL CORPORATION

Bidder	Cash Payment	Price/ Acre	Rental	Oil	Gas	Other



TRACT 39523 - Cameron Parish, Louisiana

All of the lands now or formerly constituting the beds and bottoms of all water bodies of every nature and description as to which title is vested in the State of Louisiana, together with all islands arising therein and other lands formed by accretion or by reliction, where allowed by law, excepting tax adjudicated lands, and not presently under mineral lease on December 12, 2007, situated in Cameron Parish, Louisiana, and more particularly described as follows: Beginning at the Northeast corner of State Lease No. 17462, as amended, having Coordinates of X = 1,195,249.67 and Y = 402,542.89; thence South 88 degrees 41 minutes 09 seconds East 6,402.01 feet to a point having Coordinates of X = 1,201,650.00 and Y = 402,396.07; thence South 10,590.93 feet to a point having Coordinates of X = 1,201,650.00 and Y = 391,805.14; thence West 2,571.74 feet to a point on the Texas Louisiana boundary having Coordinates of X = 1,199,078.26 and Y = 391,805.14; thence along the Texas Louisiana boundary the following courses: North 10 degrees 56 minutes 04 seconds East 483.64 feet to a point having Coordinates of X = 1,199,170.00 and Y = 392,280.00; North 33 degrees 19 minutes 16 seconds West 1,938.72 feet to a point having Coordinates of X = 1,198,105.00 and Y = 393,900.00; North 36 degrees 50 minutes 12 seconds West 687.20 feet to a point having Coordinates of X = 1,197,693.00 and Y = 394,450.00; North 20 degrees 10 minutes 29 seconds West 1,864.39 feet to a point having Coordinates of X = 1,197,050.00 and Y = 396,200.00; North 26 degrees 22 minutes 52 seconds West 1,114.01 feet to a point having Coordinates of X = 1,196,555.00 and Y = 397,198.00; North 50 degrees 24 minutes 57 seconds West 1,093.83 feet to a point having Coordinates of X = 1,195,712.00 and Y = 397,895.00; North 69 degrees 02 minutes 23 seconds West 602.59 feet to the Southeast corner of said State Lease No. 17462, as amended, having Coordinates of X = 1,195,149.28 and Y = 398,110.56; thence North 01 degrees 17 minutes 51 seconds East 4,433.47 feet along the East boundary of said State Lease No. 17462, as amended, to the point of beginning, containing approximately **423 acres, LESS AND EXCEPT** that portion thereof, if any, located West of the boundary line between the States of Texas and Louisiana as determined by the report of the Special Master and adjudicated by the Supreme Court of the United States in litigation styled **Texas v. Louisiana, et al No. 36 Original**, or as otherwise approved by said court, all as more particularly outlined on a plat on file in the Office of Mineral Resources, Department of Natural Resources. All bearings, distances and coordinates are based on Louisiana Coordinate System of 1927, (North or South Zone), where applicable.

NOTE: The above description of the Tract nominated for lease has been provided and corrected, where required, exclusively by the nomination party. Any mineral lease selected from this Tract and awarded by the Louisiana State Mineral Board shall be without warranty of any kind, either express, implied, or statutory, including, but not limited to, the implied warranties of merchantability and fitness for a particular purpose. Should the mineral lease awarded by the Louisiana State Mineral Board be subsequently modified, cancelled or abrogated due to the existence of conflicting leases, operating agreements, private claims or

other future obligations or conditions which may affect all or any portion of the leased Tract, it shall not relieve the Lessee of the obligation to pay any bonus due thereon to the Louisiana State Mineral Board, nor shall the Louisiana State Mineral Board be obligated to refund any consideration paid by the Lessor prior to such modification, cancellation, or abrogation, including, but not limited to, bonuses, rentals and royalties.

NOTE: The State of Louisiana does hereby reserve, and this lease shall be subject to, the imprescriptible right of surface use in the nature of a servitude in favor of the Department of Natural Resources, including its Offices and Commissions, for the sole purpose of implementing, constructing, servicing and maintaining approved coastal zone management and/or restoration projects. Utilization of any and all rights derived under this lease by the mineral lessee, its agents, successors or assigns, shall not interfere with nor hinder the reasonable surface use by the Department of Natural Resources, its Offices or Commissions, as herein above reserved.

Applicant: STARKS OIL CORPORATION

Bidder	Cash Payment	Price/ Acre	Rental	Oil	Gas	Other

Legend
07120032
Active_Leases
DOQQ2004

T15S - R15W

CAMERON PARISH

P.O.B.

SL 17462

SABINE PASS



TRACT 39524 - Cameron Parish, Louisiana

All lands, including lands added by accretion and reliction and lands now or formerly constituting the beds and bottoms of all water bodies of every nature and description, owned by and not presently under mineral lease as of December 12, 2007 from the State of Louisiana, situated in Cameron Parish, Louisiana, and being more fully described as follows: Beginning at a point having Coordinates of X = 1,220,413.00 and Y = 395,216.24; thence North 72 degrees 47 minutes 16 seconds East 17,770.16 feet to a point having Coordinates of X = 1,237,387.33 and Y = 400,474.62; thence South 3,322.13 feet to a point on the Louisiana Coastline, as decreed by the Supreme Court of the United States, as determined by a Special Master appointed therein, in litigation styled *United States v. State of Louisiana et al No. 9 Original*, in 1975, having Coordinates of X = 1,237,387.33 and Y = 397,152.49; thence along said Louisiana Coastline the following: Southwesterly on a straight line to a point having Coordinates of X = 1,235,668 and Y = 396,741; Southwesterly on a straight line to a point having Coordinates of X = 1,233,256 and Y = 395,989; Southwesterly on a straight line to the Northwest corner of Block 14, West Cameron Area, Revised, also being the Northeast corner of Block 16, West Cameron Area, Revised, having Coordinates of X = 1,229,113.18 and Y = 394,587.39; Southwesterly on a straight line to a point having Coordinates of X = 1,228,846 and Y = 394,497; Northwesterly on a straight line to a point having Coordinates of X = 1,228,772 and Y = 394,775; Southwesterly on a straight line to a point having Coordinates of X = 1,226,444 and Y = 393,922; Southwesterly on a straight line to a point having Coordinates of X = 1,225,768 and Y = 393,281; Northwesterly on a straight line to a point having Coordinates of X = 1,225,421 and Y = 393,370 and Southwesterly on a straight line to a point having Coordinates of X = 1,220,413.00 and Y = 391,073.83; thence North 4,142.41 feet to the point of beginning, containing approximately **762 acres**, all as more particularly outlined on a plat on file in the Office of Mineral Resources, Department of Natural Resources. All bearings, distances and coordinates are based on Louisiana Coordinate System of 1927, (North or South Zone), where applicable.

NOTE: The above description of the Tract nominated for lease has been provided and corrected, where required, exclusively by the nomination party. Any mineral lease selected from this Tract and awarded by the Louisiana State Mineral Board shall be without warranty of any kind, either express, implied, or statutory, including, but not limited to, the implied warranties of merchantability and fitness for a particular purpose. Should the mineral lease awarded by the Louisiana State Mineral Board be subsequently modified, cancelled or abrogated due to the existence of conflicting leases, operating agreements, private claims or other future obligations or conditions which may affect all or any portion of the leased Tract, it shall not relieve the Lessee of the obligation to pay any bonus due thereon to the Louisiana State Mineral Board, nor shall the Louisiana State Mineral Board be obligated to refund any consideration paid by the Lessor prior to such modification, cancellation, or abrogation, including, but not limited to, bonuses, rentals and royalties.

NOTE: The State of Louisiana does hereby reserve, and this lease shall be subject to, the imprescriptible right of surface use in the nature of a servitude in favor of the Department of Natural Resources, including its Offices and Commissions, for the sole purpose of implementing, constructing, servicing and maintaining approved coastal zone management and/or restoration projects. Utilization of any and all rights derived under this lease by the mineral lessee, its agents, successors or assigns, shall not interfere with nor hinder the reasonable surface use by the Department of Natural Resources, its Offices or Commissions, as herein above reserved.

Applicant: SOUTH LOUISIANA MINERALS, INC.

Bidder	Cash Payment	Price/ Acre	Rental	Oil	Gas	Other



TRACT 39525 - Cameron Parish, Louisiana

All lands, including lands added by accretion and reliction and lands now or formerly constituting the beds and bottoms of all water bodies of every nature and description, owned by and not presently under mineral lease as of December 12, 2007 from the State of Louisiana, situated in Cameron Parish, Louisiana, and being more fully described as follows: Beginning at a point having Coordinates of X = 1,220,413.00 and Y = 395,216.24; thence South 4,142.41 feet to a point on the Louisiana Coastline, as decreed by the Supreme Court of the United States, as determined by a Special Master appointed therein, in litigation styled *United States v. State of Louisiana et al No. 9 Original*, in 1975, having Coordinates of X = 1,220,413.00 and Y = 391,073.83; thence along said Louisiana Coastline the following: Southwesterly on a straight line to a point having Coordinates of X = 1,219,698 and Y = 390,746; Southwesterly on a straight line to a point having Coordinates of X = 1,219,065 and Y = 390,227; Southwesterly on a straight line to a point having Coordinates of X = 1,217,536 and Y = 389,445; Northwesterly on a straight line to a point having Coordinates of X = 1,217,089 and Y = 389,513; Southwesterly on a straight line to a point having Coordinates of X = 1,216,582 and Y = 389,216; Southwesterly on a straight line to a point having Coordinates of X = 1,215,615 and Y = 388,263; Southwesterly on a straight line to the Northwest corner of Block 16, West Cameron Area, Revised, also being the Northeast corner of Block 1, Sabine Pass Area, having Coordinates of X = 1,214,355.14 and Y = 387,597.29; Southwesterly on a straight line to a point having Coordinates of X = 1,213,168 and Y = 386,970; Northwesterly on a straight line to a point having Coordinates of X = 1,212,770 and Y = 387,027 and Southwesterly on a straight line to a point having Coordinates of X = 1,206,475.69 and Y = 382,013.43; thence North 4,365.70 feet to a point having Coordinates of X = 1,206,475.69 and Y = 386,379.13; thence North 57 degrees 37 minutes 22 seconds East 16,502.82 feet to the point of beginning, containing approximately **593 acres**, all as more particularly outlined on a plat on file in the Office of Mineral Resources, Department of Natural Resources. All bearings, distances and coordinates are based on Louisiana Coordinate System of 1927, (North or South Zone), where applicable.

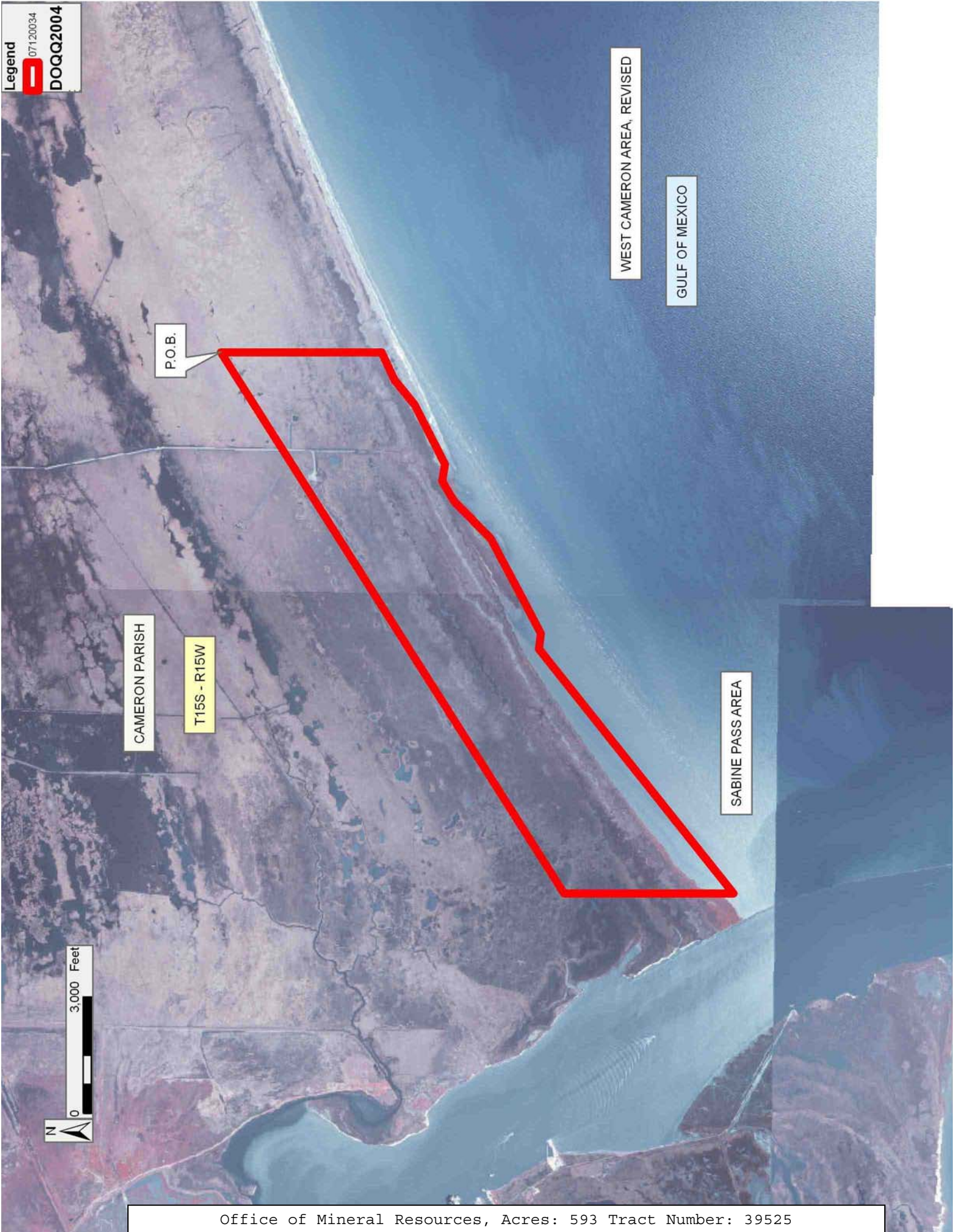
NOTE: The above description of the Tract nominated for lease has been provided and corrected, where required, exclusively by the nomination party. Any mineral lease selected from this Tract and awarded by the Louisiana State Mineral Board shall be without warranty of any kind, either express, implied, or statutory, including, but not limited to, the implied warranties of merchantability and fitness for a particular purpose. Should the mineral lease awarded by the Louisiana State Mineral Board be subsequently modified, cancelled or abrogated due to the existence of conflicting leases, operating agreements, private claims or other future obligations or conditions which may affect all or any portion of the leased Tract, it shall not relieve the Lessee of the obligation to pay any bonus due thereon to the Louisiana State Mineral Board, nor shall the Louisiana State Mineral Board be obligated to refund any consideration

paid by the Lessor prior to such modification, cancellation, or abrogation, including, but not limited to, bonuses, rentals and royalties.

NOTE: The State of Louisiana does hereby reserve, and this lease shall be subject to, the imprescriptible right of surface use in the nature of a servitude in favor of the Department of Natural Resources, including its Offices and Commissions, for the sole purpose of implementing, constructing, servicing and maintaining approved coastal zone management and/or restoration projects. Utilization of any and all rights derived under this lease by the mineral lessee, its agents, successors or assigns, shall not interfere with nor hinder the reasonable surface use by the Department of Natural Resources, its Offices or Commissions, as herein above reserved.

Applicant: SOUTH LOUISIANA MINERALS, INC.

Bidder	Cash Payment	Price/ Acre	Rental	Oil	Gas	Other



TRACT 39526 - Cameron Parish, Louisiana

All of the lands now or formerly constituting the beds and bottoms of all water bodies of every nature and description as to which title is vested in the State of Louisiana, together with all islands arising therein and other lands formed by accretion or by reliction, where allowed by law, excepting tax adjudicated lands, and not presently under mineral lease on December 12, 2007, situated in Cameron Parish, Louisiana, and more particularly described as follows: Beginning at a point having Coordinates of X = 1,204,700.00 and Y = 391,805.14; thence South 5,455.14 feet to a point having Coordinates of X = 1,204,700.00 and Y = 386,350.00; thence West 3,300.00 feet to a point on the Texas Louisiana boundary having Coordinates of X = 1,201,400.00 and Y = 386,350.00; thence along the Texas Louisiana boundary the following courses: North 34 degrees 12 minutes 57 seconds West 906.97 feet to a point having Coordinates of X = 1,200,890.00 and Y = 387,100.00; North 22 degrees 49 minutes 23 seconds West 1,301.93 feet to a point having Coordinates of X = 1,200,385.00 and Y = 388,300.00; North 36 degrees 57 minutes 22 seconds West 1,996.00 feet to a point having Coordinates of X = 1,199,185.00 and Y = 389,895.00; North 20 degrees 24 minutes 01 seconds West 645.48 feet to a point having Coordinates of X = 1,198,960.00 and Y = 390,500.00; North 02 degrees 32 minutes 41 seconds East 900.89 feet to a point having Coordinates of X = 1,199,000.00 and Y = 391,400.00; North 10 degrees 56 minutes 02 seconds East 412.63 feet to a point having Coordinates of X = 1,199,078.26 and Y = 391,805.14; thence East 5,621.74 feet to the point of beginning, containing approximately **202 acres, LESS AND EXCEPT** that portion thereof, if any, located West of the boundary line between the States of Texas and Louisiana as determined by the report of the Special Master and adjudicated by the Supreme Court of the United States in litigation styled **Texas v. Louisiana, et al No. 36 Original**, or as otherwise approved by said court, all as more particularly outlined on a plat on file in the Office of Mineral Resources, Department of Natural Resources. All bearings, distances and coordinates are based on Louisiana Coordinate System of 1927, (North or South Zone), where applicable.

NOTE: The above description of the Tract nominated for lease has been provided and corrected, where required, exclusively by the nomination party. Any mineral lease selected from this Tract and awarded by the Louisiana State Mineral Board shall be without warranty of any kind, either express, implied, or statutory, including, but not limited to, the implied warranties of merchantability and fitness for a particular purpose. Should the mineral lease awarded by the Louisiana State Mineral Board be subsequently modified, cancelled or abrogated due to the existence of conflicting leases, operating agreements, private claims or other future obligations or conditions which may affect all or any portion of the leased Tract, it shall not relieve the Lessee of the obligation to pay any bonus due thereon to the Louisiana State Mineral Board, nor shall the Louisiana State Mineral Board be obligated to refund any consideration paid by the Lessor prior to such modification, cancellation, or abrogation, including, but not limited to, bonuses, rentals and royalties.

NOTE: The State of Louisiana does hereby reserve, and this lease shall be subject to, the imprescriptible right of surface use in the nature of a servitude in favor of the Department of Natural Resources, including its Offices and Commissions, for the sole purpose of implementing, constructing, servicing and maintaining approved coastal zone management and/or restoration projects. Utilization of any and all rights derived under this lease by the mineral lessee, its agents, successors or assigns, shall not interfere with nor hinder the reasonable surface use by the Department of Natural Resources, its Offices or Commissions, as herein above reserved.

Applicant: STARKS OIL CORPORATION

Bidder	Cash Payment	Price/ Acre	Rental	Oil	Gas	Other



TRACT 39527 - Jefferson Parish, Louisiana

All of the lands now or formerly constituting the beds and bottoms of all water bodies of every nature and description as to which title is vested in the State of Louisiana, together with all islands arising therein and other lands formed by accretion or by reliction, where allowed by law, excepting tax adjudicated lands, and not presently under mineral lease on December 12, 2007, situated in Jefferson Parish, Louisiana, and more particularly described as follows: Beginning at a point having Coordinates of X = 2,419,651.00 and Y = 330,244.00; thence East 4,355.00 feet to a point having Coordinates of X = 2,424,006.00 and Y = 330,244.00; thence South 13,702.00 feet to a point having Coordinates of X = 2,424,006.00 and Y = 316,542.00; thence West 12,055.00 feet to a point having Coordinates of X = 2,411,951.00 and Y = 316,542.00; thence North 7,414.00 feet to a point having Coordinates of X = 2,411,951.00 and Y = 323,956.00; thence North 50 degrees 45 minutes 51 seconds East 9,941.27 feet to the point of beginning, containing approximately **1,081 acres**, all as more particularly outlined on a plat on file in the Office of Mineral Resources, Department of Natural Resources. All bearings, distances and coordinates are based on Louisiana Coordinate System of 1927, (North or South Zone), where applicable.

NOTE: The above description of the Tract nominated for lease has been provided and corrected, where required, exclusively by the nomination party. Any mineral lease selected from this Tract and awarded by the Louisiana State Mineral Board shall be without warranty of any kind, either express, implied, or statutory, including, but not limited to, the implied warranties of merchantability and fitness for a particular purpose. Should the mineral lease awarded by the Louisiana State Mineral Board be subsequently modified, cancelled or abrogated due to the existence of conflicting leases, operating agreements, private claims or other future obligations or conditions which may affect all or any portion of the leased Tract, it shall not relieve the Lessee of the obligation to pay any bonus due thereon to the Louisiana State Mineral Board, nor shall the Louisiana State Mineral Board be obligated to refund any consideration paid by the Lessor prior to such modification, cancellation, or abrogation, including, but not limited to, bonuses, rentals and royalties.

NOTE: The State of Louisiana does hereby reserve, and this lease shall be subject to, the imprescriptible right of surface use in the nature of a servitude in favor of the Department of Natural Resources, including its Offices and Commissions, for the sole purpose of implementing, constructing, servicing and maintaining approved coastal zone management and/or restoration projects. Utilization of any and all rights derived under this lease by the mineral lessee, its agents, successors or assigns, shall not interfere with nor hinder the reasonable surface use by the Department of Natural Resources, its Offices or Commissions, as herein above reserved.

NOTE: The Department of Wildlife and Fisheries has designated certain areas in the coastal waters of the State of Louisiana as Oyster Seed Bed Areas. The exact location of those Seed Bed Areas must be obtained from the Department of Wildlife and Fisheries and any work done under a mineral lease from the State of Louisiana may necessarily be conducted in conformity with the rules and regulations promulgated by the said Department of Wildlife and Fisheries for Oyster Seed Bed Areas.

Applicant: HARPER PETROLEUM COMPANY, INC.

Bidder	Cash Payment	Price/ Acre	Rental	Oil	Gas	Other

JEFFERSON PARISH

P.O.B.

ROUND LAKE

BAYOU BARATARIA



TRACT 39528 - Portion of Block 3, Eugene Island Area, Revised, Iberia Parish, Louisiana

All of the lands now or formerly constituting the beds and bottoms of all water bodies of every nature and description as to which title is vested in the State of Louisiana, together with all islands arising therein and other lands formed by accretion or by reliction, where allowed by law, excepting tax adjudicated lands, and not presently under mineral lease on December 12, 2007, situated in Iberia Parish, Louisiana, and more particularly described as follows: Beginning at a point on the West line of Block 3, Eugene Island Area, Revised, also being the Southwest corner of State Lease No. 19283 having Coordinates of X = 1,864,800.56 and Y = 291,788.00; thence along the boundary of said State Lease No. 19283 the following courses: South 86 degrees 01 minutes 38 seconds East 2,006.26 feet; South 82 degrees 41 minutes 04 seconds East 3,243.40 feet and South 88 degrees 22 minutes 10 seconds East 1,507.61 feet to a point on its Southern boundary having Coordinates of X = 1,871,526.00 and Y = 291,193.10; thence South 5,327.45 feet to a point having Coordinates of X = 1,871,526.00 and Y = 285,865.65; thence South 78 degrees 08 minutes 25 seconds West 4,236.43 feet to the Easternmost Southeast corner of State Lease No. 19413 having Coordinates of X = 1,867,380.00 and Y = 284,995.00; thence along the boundary of said State Lease No. 19413 the following courses: North 33 degrees 57 minutes 16 seconds West 4,207.45 feet and South 58 degrees 14 minutes 55 seconds West 269.82 feet to a point on the West line of said Block 3 having Coordinates of X = 1,864,800.56 and Y = 288,343.01; thence North 3,444.99 feet along the West line of said Block 3 to the point of beginning, containing approximately **846.67 acres**, all as more particularly outlined on a plat on file in the Office of Mineral Resources, Department of Natural Resources. All bearings, distances and coordinates are based on Louisiana Coordinate System of 1927, (North or South Zone), where applicable.

NOTE: The above description of the Tract nominated for lease has been provided and corrected, where required, exclusively by the nomination party. Any mineral lease selected from this Tract and awarded by the Louisiana State Mineral Board shall be without warranty of any kind, either express, implied, or statutory, including, but not limited to, the implied warranties of merchantability and fitness for a particular purpose. Should the mineral lease awarded by the Louisiana State Mineral Board be subsequently modified, cancelled or abrogated due to the existence of conflicting leases, operating agreements, private claims or other future obligations or conditions which may affect all or any portion of the leased Tract, it shall not relieve the Lessee of the obligation to pay any bonus due thereon to the Louisiana State Mineral Board, nor shall the Louisiana State Mineral Board be obligated to refund any consideration paid by the Lessor prior to such modification, cancellation, or abrogation, including, but not limited to, bonuses, rentals and royalties.

NOTE: The above described tract may be in the vicinity of existing shell reefs where drilling and dredging operations must be conducted in strict

conformity with the regulations adopted by the Louisiana Department of Wildlife and Fisheries and/or the U.S. Corps of Engineers, U.S. Army.

NOTE: The State of Louisiana does hereby reserve, and this lease shall be subject to, the imprescriptible right of surface use in the nature of a servitude in favor of the Department of Natural Resources, including its Offices and Commissions, for the sole purpose of implementing, constructing, servicing and maintaining approved coastal zone management and/or restoration projects. Utilization of any and all rights derived under this lease by the mineral lessee, its agents, successors or assigns, shall not interfere with nor hinder the reasonable surface use by the Department of Natural Resources, its Offices or Commissions, as herein above reserved.

NOTE: The Department of Wildlife and Fisheries has designated certain areas in the coastal waters of the State of Louisiana as Oyster Seed Bed Areas. The exact location of those Seed Bed Areas must be obtained from the Department of Wildlife and Fisheries and any work done under a mineral lease from the State of Louisiana may necessarily be conducted in conformity with the rules and regulations promulgated by the said Department of Wildlife and Fisheries for Oyster Seed Bed Areas.

Applicant: PATRICK L. DONOHUE PETROLEUM PROPERTIES, INC.

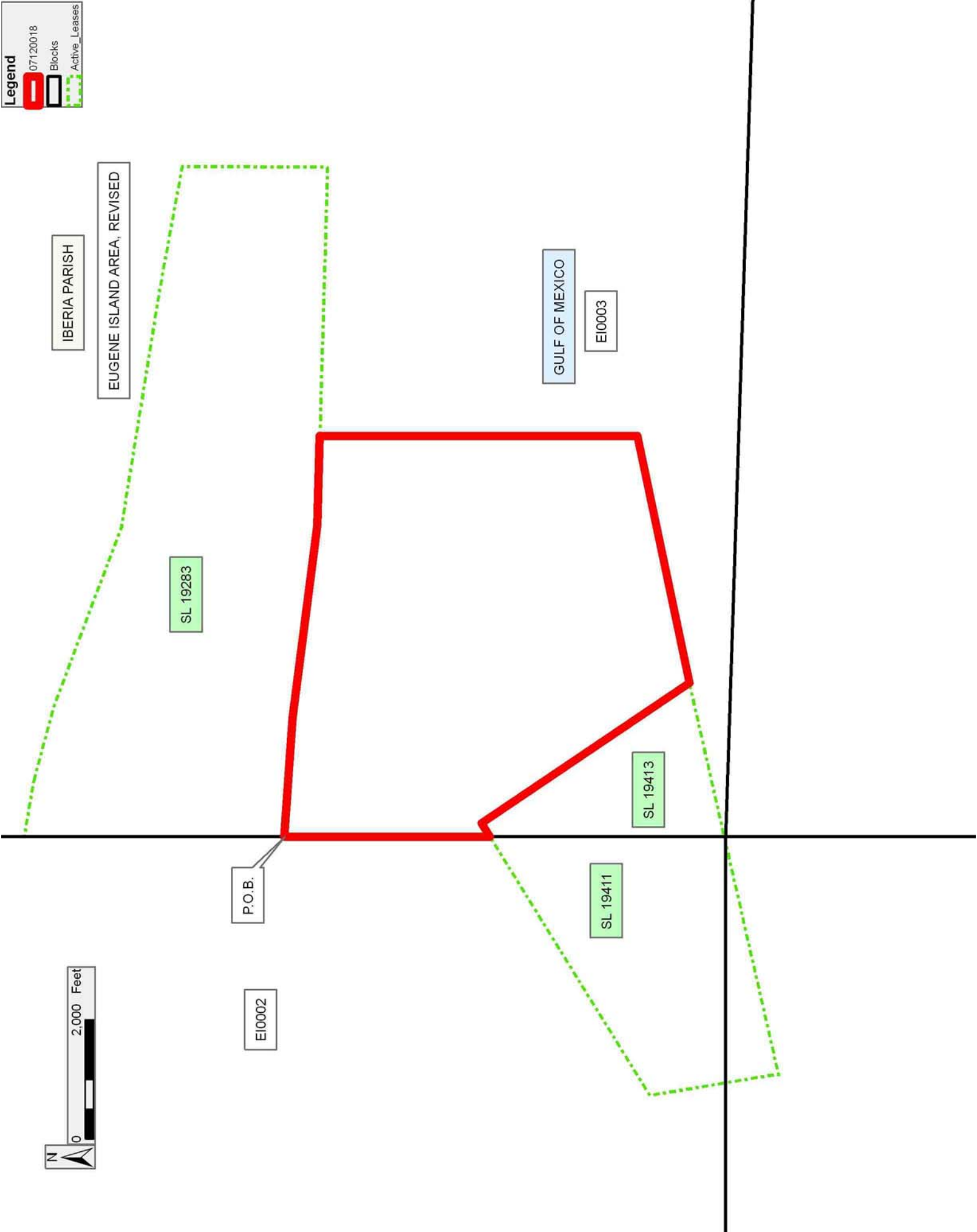
Bidder	Cash Payment	Price/ Acre	Rental	Oil	Gas	Other

Legend

07120018

Blocks

Active_Leases



TRACT 39529 - Portion of Block 3, Eugene Island Area, Revised, Iberia Parish, Louisiana

All of the lands now or formerly constituting the beds and bottoms of all water bodies of every nature and description as to which title is vested in the State of Louisiana, together with all islands arising therein and other lands formed by accretion or by reliction, where allowed by law, excepting tax adjudicated lands, and not presently under mineral lease on December 12, 2007, situated in Iberia Parish, Louisiana, and more particularly described as follows: Beginning at a point within Block 3, Eugene Island Area, Revised, also being a point on the South boundary of State Lease No. 19283 having Coordinates of X = 1,871,526.00 and Y = 291,193.10; thence South 88 degrees 22 minutes 10 seconds East 4,501.82 feet along the South boundary of said State Lease No. 19283 to its Southeast corner having Coordinates of X = 1,876,026.00 and Y = 291,065.00; thence South 4,254.36 feet to a point having Coordinates of X = 1,876,026.00 and Y = 286,810.64; thence South 78 degrees 08 minutes 25 seconds West 4,598.15 feet to a point having Coordinates of X = 1,871,526.00 and Y = 285,865.65; thence North 5,327.45 feet to the point of beginning, containing approximately **494.93 acres**, all as more particularly outlined on a plat on file in the Office of Mineral Resources, Department of Natural Resources. All bearings, distances and coordinates are based on Louisiana Coordinate System of 1927, (North or South Zone), where applicable.

NOTE: The above description of the Tract nominated for lease has been provided and corrected, where required, exclusively by the nomination party. Any mineral lease selected from this Tract and awarded by the Louisiana State Mineral Board shall be without warranty of any kind, either express, implied, or statutory, including, but not limited to, the implied warranties of merchantability and fitness for a particular purpose. Should the mineral lease awarded by the Louisiana State Mineral Board be subsequently modified, cancelled or abrogated due to the existence of conflicting leases, operating agreements, private claims or other future obligations or conditions which may affect all or any portion of the leased Tract, it shall not relieve the Lessee of the obligation to pay any bonus due thereon to the Louisiana State Mineral Board, nor shall the Louisiana State Mineral Board be obligated to refund any consideration paid by the Lessor prior to such modification, cancellation, or abrogation, including, but not limited to, bonuses, rentals and royalties.

NOTE: The above described tract may be in the vicinity of existing shell reefs where drilling and dredging operations must be conducted in strict conformity with the regulations adopted by the Louisiana Department of Wildlife and Fisheries and/or the U.S. Corps of Engineers, U.S. Army.

NOTE: The State of Louisiana does hereby reserve, and this lease shall be subject to, the imprescriptible right of surface use in the nature of a servitude in favor of the Department of Natural Resources, including its Offices and Commissions, for the sole purpose of implementing,

constructing, servicing and maintaining approved coastal zone management and/or restoration projects. Utilization of any and all rights derived under this lease by the mineral lessee, its agents, successors or assigns, shall not interfere with nor hinder the reasonable surface use by the Department of Natural Resources, its Offices or Commissions, as herein above reserved.

NOTE: The Department of Wildlife and Fisheries has designated certain areas in the coastal waters of the State of Louisiana as Oyster Seed Bed Areas. The exact location of those Seed Bed Areas must be obtained from the Department of Wildlife and Fisheries and any work done under a mineral lease from the State of Louisiana may necessarily be conducted in conformity with the rules and regulations promulgated by the said Department of Wildlife and Fisheries for Oyster Seed Bed Areas.

Applicant: PATRICK L. DONOHUE PETROLEUM PROPERTIES, INC.

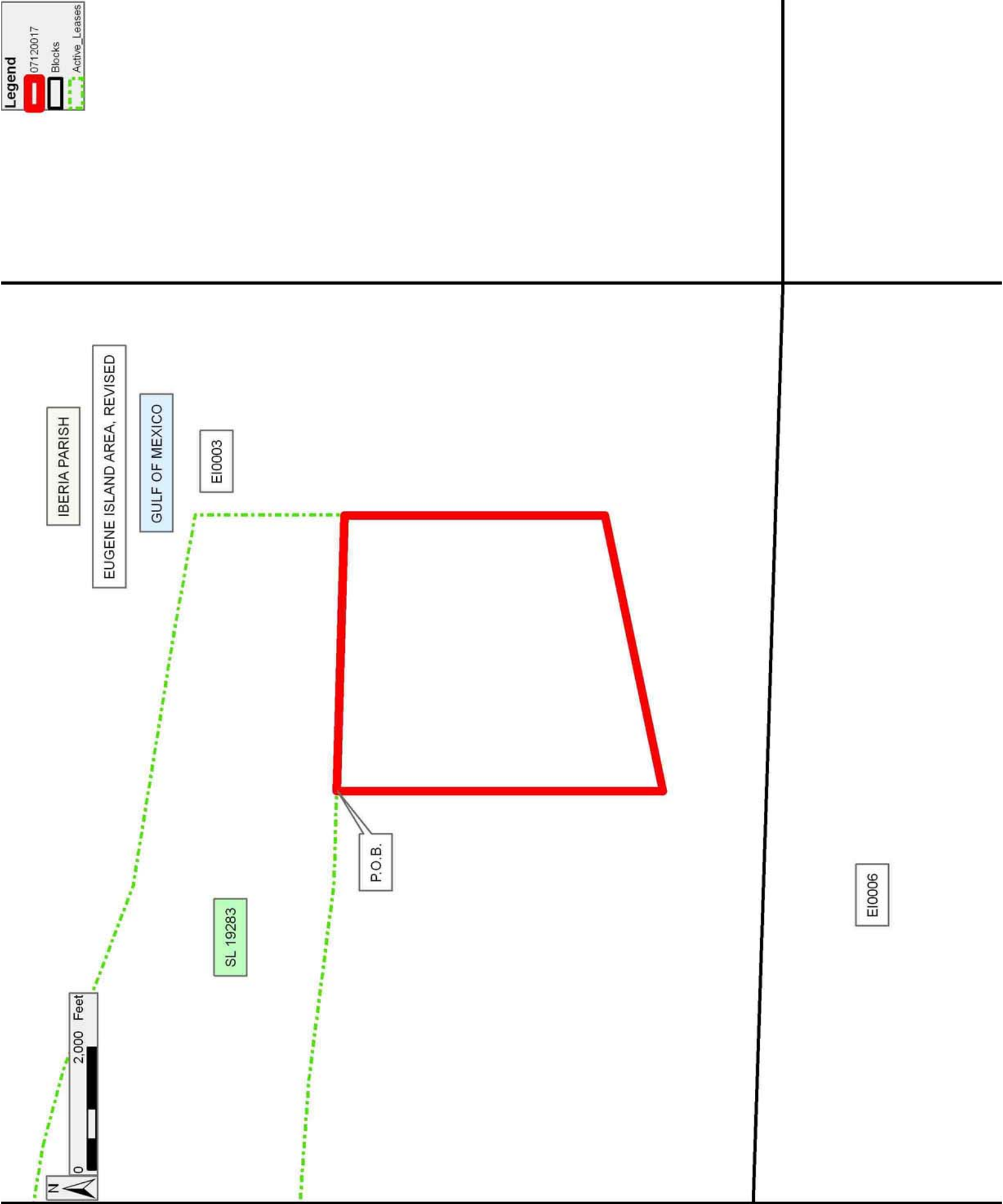
Bidder	Cash Payment	Price/ Acre	Rental	Oil	Gas	Other

Legend

07120017

Blocks

Active_Leases



TRACT 39530 - Terrebonne Parish, Louisiana

All of the lands now or formerly constituting the beds and bottoms of all water bodies of every nature and description as to which title is vested in the State of Louisiana, together with all islands arising therein and other lands formed by accretion or by reliction, where allowed by law, excepting tax adjudicated lands, and not presently under mineral lease on December 12, 2007, situated in Terrebonne Parish, Louisiana, and more particularly described as follows: Beginning at a point having Coordinates of X = 2,104,192.13 and Y = 211,983.54, said point being the northwest corner of State of Louisiana State Lease No. 17993; thence Southerly approximately 591.43 feet along the western boundary of said State Lease No. 17993 to the northeast corner of State of Louisiana State Lease No. 725, as amended; thence along the boundaries of said State Lease No. 725, as amended, the following courses: West approximately 5,280.00 feet, South approximately 2,966.19 feet, and West approximately 380 feet, to the Southeast corner of Section 16 Township 21 South, Range 14 East; thence along boundaries of said Section 16 the following courses: Northerly approximately 5,280 feet, Westerly approximately 5,280 feet, and Southerly approximately 5,280 feet; thence Westerly approximately 3,080 feet, to a point having Coordinates of X = 2,090,180.35 and Y = 208,345.50; thence North 8,110.43 feet to a point having Coordinates of X = 2,090,180.35 and Y = 216,455.93; thence East 14,011.78 feet to a point having Coordinates of X = 2,104,192.13 and Y = 216,455.93; thence South 4,472.39 feet to the point of beginning, containing approximately **920 acres**, all as more particularly outlined on a plat on file in the Office of Mineral Resources, Department of Natural Resources. All bearings, distances and coordinates are based on Louisiana Coordinate System of 1927, (North or South Zone), where applicable.

NOTE: The above description of the Tract nominated for lease has been provided and corrected, where required, exclusively by the nomination party. Any mineral lease selected from this Tract and awarded by the Louisiana State Mineral Board shall be without warranty of any kind, either express, implied, or statutory, including, but not limited to, the implied warranties of merchantability and fitness for a particular purpose. Should the mineral lease awarded by the Louisiana State Mineral Board be subsequently modified, cancelled or abrogated due to the existence of conflicting leases, operating agreements, private claims or other future obligations or conditions which may affect all or any portion of the leased Tract, it shall not relieve the Lessee of the obligation to pay any bonus due thereon to the Louisiana State Mineral Board, nor shall the Louisiana State Mineral Board be obligated to refund any consideration paid by the Lessor prior to such modification, cancellation, or abrogation, including, but not limited to, bonuses, rentals and royalties.

NOTE: The State of Louisiana does hereby reserve, and this lease shall be subject to, the imprescriptible right of surface use in the nature of a servitude in favor of the Department of Natural Resources, including its Offices and Commissions, for the sole purpose of implementing,

constructing, servicing and maintaining approved coastal zone management and/or restoration projects. Utilization of any and all rights derived under this lease by the mineral lessee, its agents, successors or assigns, shall not interfere with nor hinder the reasonable surface use by the Department of Natural Resources, its Offices or Commissions, as herein above reserved.

NOTE: The Department of Wildlife and Fisheries has designated certain areas in the coastal waters of the State of Louisiana as Oyster Seed Bed Areas. The exact location of those Seed Bed Areas must be obtained from the Department of Wildlife and Fisheries and any work done under a mineral lease from the State of Louisiana may necessarily be conducted in conformity with the rules and regulations promulgated by the said Department of Wildlife and Fisheries for Oyster Seed Bed Areas.

Applicant: ROBERT A. SCHROEDER, INC.

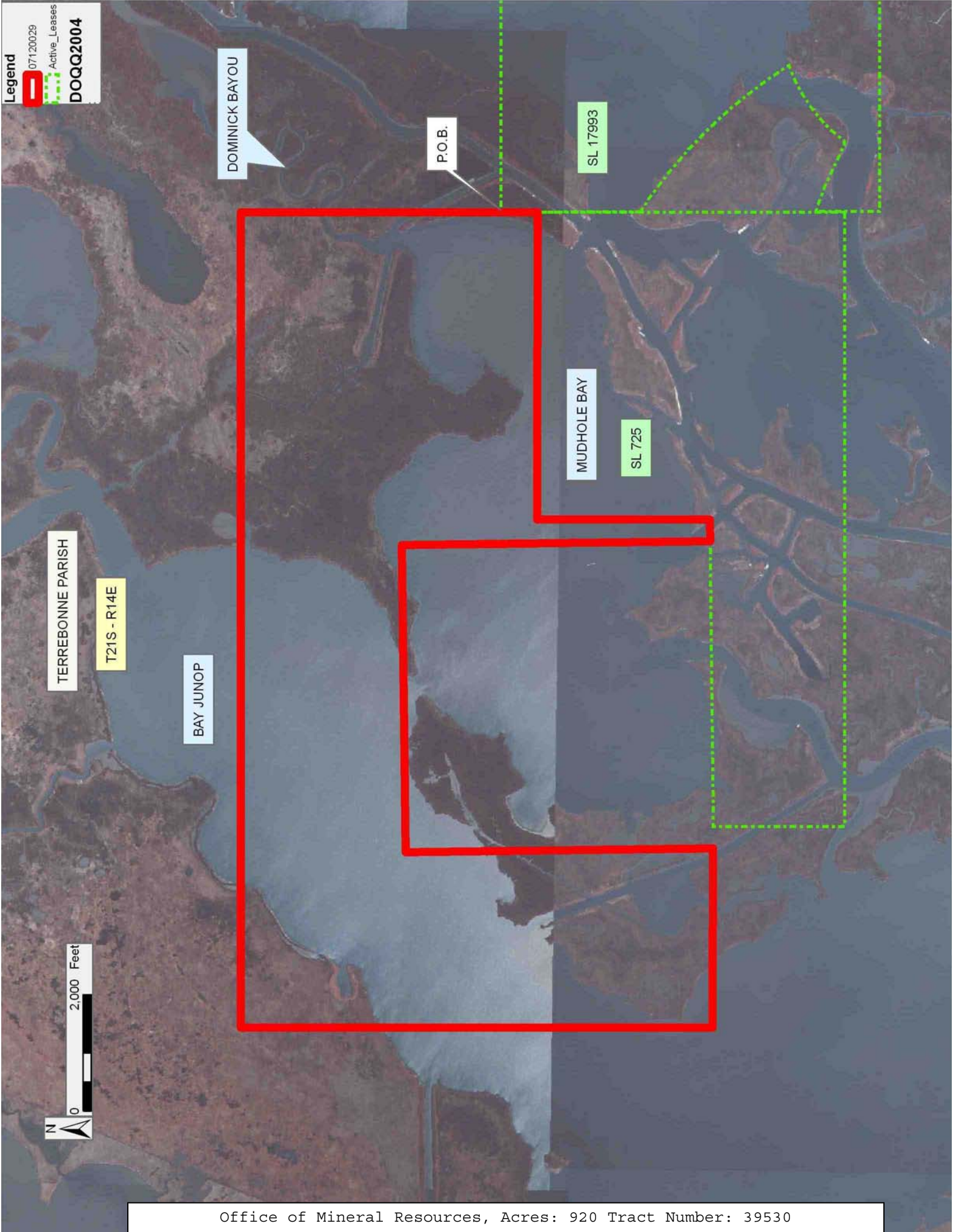
Bidder	Cash Payment	Price/ Acre	Rental	Oil	Gas	Other

Legend

 07120029

 Active_Leases

DOQQ2004



TRACT 39531 - Terrebonne Parish, Louisiana

All of the lands now or formerly constituting the beds and bottoms of all water bodies of every nature and description as to which title is vested in the State of Louisiana, together with all islands arising therein and other lands formed by accretion or by reliction, where allowed by law, excepting tax adjudicated lands, and not presently under mineral lease on December 12, 2007, situated in Terrebonne Parish, Louisiana, and more particularly described as follows: The eroded portions of Section 16, Township 21 South, Range 14 East, Terrebonne Parish, Louisiana, containing approximately **483 acres**, all as more particularly outlined on a plat on file in the Office of Mineral Resources, Department of Natural Resources. All bearings, distances and coordinates are based on Louisiana Coordinate System of 1927, (North or South Zone), where applicable.

NOTE: The above description of the Tract nominated for lease has been provided and corrected, where required, exclusively by the nomination party. Any mineral lease selected from this Tract and awarded by the Louisiana State Mineral Board shall be without warranty of any kind, either express, implied, or statutory, including, but not limited to, the implied warranties of merchantability and fitness for a particular purpose. Should the mineral lease awarded by the Louisiana State Mineral Board be subsequently modified, cancelled or abrogated due to the existence of conflicting leases, operating agreements, private claims or other future obligations or conditions which may affect all or any portion of the leased Tract, it shall not relieve the Lessee of the obligation to pay any bonus due thereon to the Louisiana State Mineral Board, nor shall the Louisiana State Mineral Board be obligated to refund any consideration paid by the Lessor prior to such modification, cancellation, or abrogation, including, but not limited to, bonuses, rentals and royalties.

NOTE: The State of Louisiana does hereby reserve, and this lease shall be subject to, the imprescriptible right of surface use in the nature of a servitude in favor of the Department of Natural Resources, including its Offices and Commissions, for the sole purpose of implementing, constructing, servicing and maintaining approved coastal zone management and/or restoration projects. Utilization of any and all rights derived under this lease by the mineral lessee, its agents, successors or assigns, shall not interfere with nor hinder the reasonable surface use by the Department of Natural Resources, its Offices or Commissions, as herein above reserved.

NOTE: The Department of Wildlife and Fisheries has designated certain areas in the coastal waters of the State of Louisiana as Oyster Seed Bed Areas. The exact location of those Seed Bed Areas must be obtained from the Department of Wildlife and Fisheries and any work done under a mineral lease from the State of Louisiana may necessarily be conducted in conformity with the rules and regulations promulgated by the said Department of Wildlife and Fisheries for Oyster Seed Bed Areas.

Applicant: ROBERT A. SCHROEDER, INC.

Bidder	Cash Payment	Price/ Acre	Rental	Oil	Gas	Other

