

**TRACT 39512 - Webster Parish, Louisiana**

All of the lands now or formerly constituting the beds and bottoms of all water bodies of every nature and description as to which title is vested in the State of Louisiana, together with all islands arising therein and other lands formed by accretion or by reliction, where allowed by law, excepting tax adjudicated lands, and not presently under mineral lease on December 12, 2007, situated in Webster Parish, Louisiana, and more particularly described as follows: Beginning a point having Coordinates of X = 1,720,000.00 and Y = 646,400.00; thence East 5,800.00 feet to the Northwest corner of State Lease No. 18552 having Coordinates of X = 1,725,800.00 and Y = 646,400.00; thence South 6,000.00 feet along the West boundary of said State Lease No. 18552 to its Southwest corner, also being a point on the North boundary of State Lease No. 18554 having Coordinates of X = 1,725,800.00 and Y = 640,400.00; thence West 551.50 feet along the North boundary of said State Lease No. 18554 to its Northwest corner having Coordinates of X = 1,725,248.50 and Y = 640,400.00; thence continue West 4,748.50 feet to a point on the Eastern boundary of State Lease No. 16531, as amended, having Coordinates of X = 1,720,500.00 and Y = 640,400.00; thence along boundary of said State Lease No. 16531 the following courses: North 800.00 feet and West 500.00 feet to a point having Coordinates of X = 1,720,000.00 and Y = 641,200.00; thence North 5,200.00 feet to the point of beginning, **LESS and EXCEPT** State owned acreage conveyed by Parks M. Elston, et ux. to The State Parks Commission on February 25, 1947, recorded in Conveyance 185 Page 214 under Entry No. 98209, records of Webster Parish, Louisiana, containing approximately **234 acres**, all as more particularly outlined on a plat on file in the Office of Mineral Resources, Department of Natural Resources. All bearings, distances and coordinates are based on Louisiana Coordinate System of 1927, (North or South Zone), where applicable.

NOTE: The above description of the Tract nominated for lease has been provided and corrected, where required, exclusively by the nomination party. Any mineral lease selected from this Tract and awarded by the Louisiana State Mineral Board shall be without warranty of any kind, either express, implied, or statutory, including, but not limited to, the implied warranties of merchantability and fitness for a particular purpose. Should the mineral lease awarded by the Louisiana State Mineral Board be subsequently modified, cancelled or abrogated due to the existence of conflicting leases, operating agreements, private claims or other future obligations or conditions which may affect all or any portion of the leased Tract, it shall not relieve the Lessee of the obligation to pay any bonus due thereon to the Louisiana State Mineral Board, nor shall the Louisiana State Mineral Board be obligated to refund any consideration paid by the Lessor prior to such modification, cancellation, or abrogation, including, but not limited to, bonuses, rentals and royalties.

NOTE: This tract encompasses an area beneath which is located on the Bistineau Gas Storage Pool in the Sligo formation of the Pettet Porosity. Accordingly, any mineral related activity, including, but not limited to, the exploration and drilling for, and the production and storage of oil,

gas and other liquid or gaseous minerals, conducted under a valid mineral lease which may be obtained from the State, shall be subject to any statewide orders issued by the Louisiana Office of Conservation pertinent to conducting such operations in this area and upon this tract, including particularly, but not limited to, the following: Order Nos. 287, 287-A, 287-A-1, 287-B, Supplement to 287-B, 287-B-1, 287-B-2 and 287-B-3. The successful bidder on this tract shall contact the operator of the Bistineau Gas Storage Pool and the Office of Conservation prior to initiating and conducting any of the aforementioned activity hereon.

NOTE: Bidders be advised that tracts nominated in Lake Bistineau in Bienville, Bossier, and Webster Parishes are currently the subject of litigation. Devon Energy Production Co., L.P. v. Gail Norton, Secretary, United States Department of the Interior, Docket No. 04-2093 (W.D. La.), is a dispute between the State of Louisiana and the United States over title to the water bottoms of Lake Bistineau. Any bids accepted for Lake Bistineau tracts are done so with the caveat that title is currently in dispute and that a loss of title by the State of Louisiana may result in a cancellation of State mineral leases on Lake Bistineau by the United States. Any mineral lease selected from Lake Bistineau tracts and awarded by the Louisiana State Mineral Board shall be without warranty of any kind, either express, implied, or statutory, including, but not limited to, the implied warranties of merchantability and fitness for a particular purpose. Should the mineral lease awarded by the Louisiana State Mineral Board be subsequently modified, cancelled, or abrogated due to the existence of conflicting leases, operating agreements, private claims, the Devon Energy litigation, or other future obligations or conditions which may affect all or any portion of the leased tract, it shall not relieve the Lessee of the obligation to pay any bonus due thereon to the Louisiana State Mineral Board, nor shall the Louisiana State Mineral Board be obligated to refund any consideration paid by the Lessor prior to such modification, cancellation, or abrogation, including, but not limited to, bonuses, rentals and royalties.

Applicant: CYPRESS ENERGY CORPORATION

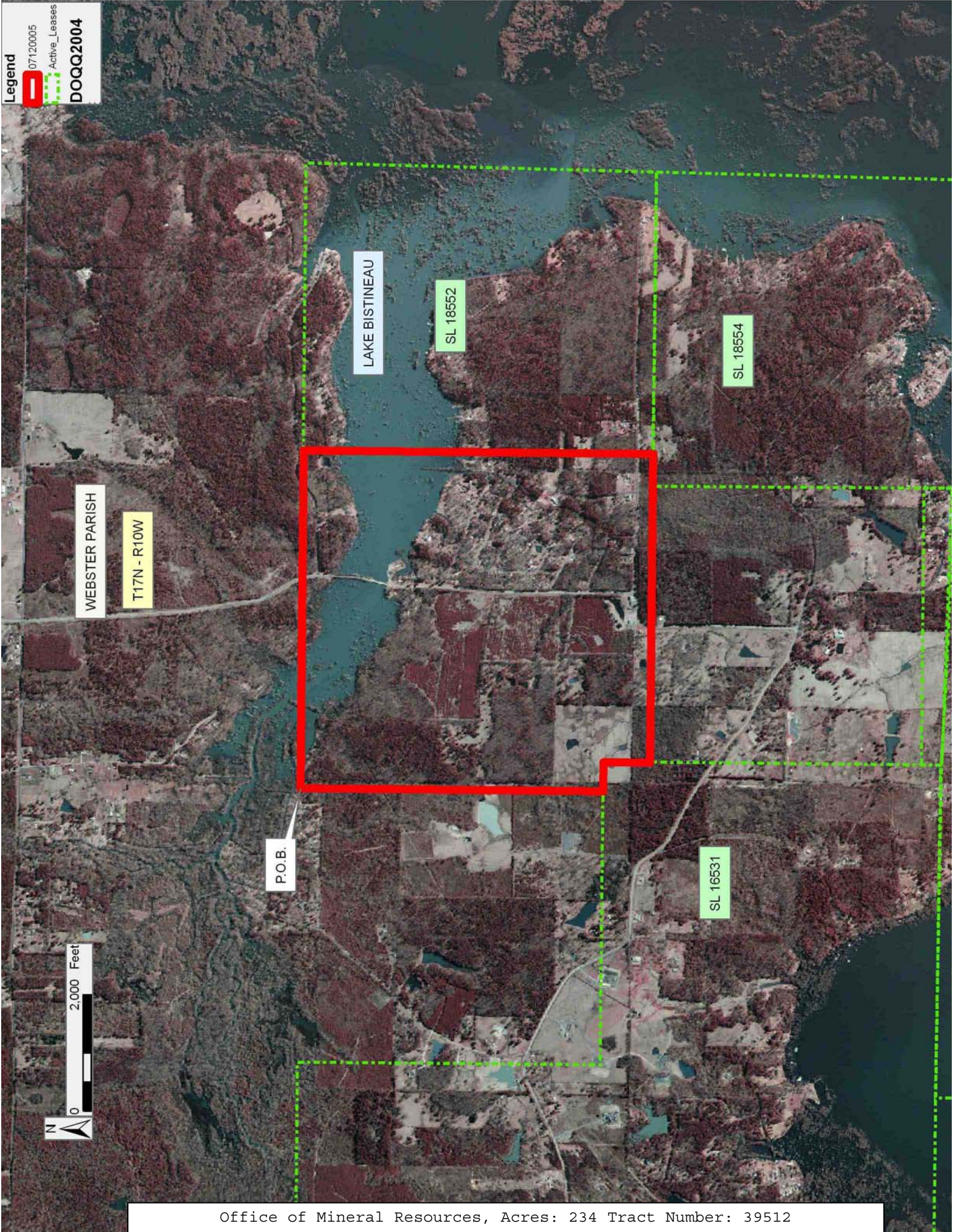
Bidder	Cash Payment	Price/ Acre	Rental	Oil	Gas	Other



Legend

 07/12/2005  
Active\_Leases

DOQQ2004





**TRACT 39513 - Caldwell Parish, Louisiana**

All of the lands now or formerly constituting the beds and bottoms of all water bodies of every nature and description as to which title is vested in the State of Louisiana, together with all islands arising therein and other lands formed by accretion or by reliction, where allowed by law, excepting tax adjudicated lands, and not presently under mineral lease on December 12, 2007, situated in Caldwell Parish, Louisiana, and more particularly described as follows: Beginning at a point having Coordinates of X = 2,071,300.00 and Y = 466,700.00; thence East for 2,900.00 feet to a point having Coordinates of X = 2,074,200.00 and Y = 466,700.00; thence South 3,750.00 feet to a point having Coordinates of X = 2,074,200.00 and Y = 462,950.00; thence West 2,900.00 feet to a point having Coordinates of X = 2,071,300.00 and Y = 462,950.00; thence North for 3,750.00 feet to the point of beginning, containing approximately **10 acres**, all as more particularly outlined on a plat on file in the Office of Mineral Resources, Department of Natural Resources. All bearings, distances and coordinates are based on Louisiana Coordinate System of 1927, (North or South Zone), where applicable.

NOTE: The above description of the Tract nominated for lease has been provided and corrected, where required, exclusively by the nomination party. Any mineral lease selected from this Tract and awarded by the Louisiana State Mineral Board shall be without warranty of any kind, either express, implied, or statutory, including, but not limited to, the implied warranties of merchantability and fitness for a particular purpose. Should the mineral lease awarded by the Louisiana State Mineral Board be subsequently modified, cancelled or abrogated due to the existence of conflicting leases, operating agreements, private claims or other future obligations or conditions which may affect all or any portion of the leased Tract, it shall not relieve the Lessee of the obligation to pay any bonus due thereon to the Louisiana State Mineral Board, nor shall the Louisiana State Mineral Board be obligated to refund any consideration paid by the Lessor prior to such modification, cancellation, or abrogation, including, but not limited to, bonuses, rentals and royalties.

Applicant: BAY GAS, LLC

Bidder	Cash Payment	Price/ Acre	Rental	Oil	Gas	Other







**TRACT 39514 - Concordia Parish, Louisiana**

All of the lands now or formerly constituting the beds and bottoms of all water bodies of every nature and description as to which title is vested in the State of Louisiana, together with all islands arising therein and other lands formed by accretion or by reliction, where allowed by law, excepting tax adjudicated lands, and not presently under mineral lease on December 12, 2007, situated in Concordia Parish, Louisiana, and more particularly described as follows: Beginning at a point in the Mississippi River having a Coordinate of X = 2,300,471.00 and Y = 219,950.00, thence North 26 degrees 00 minutes 00 seconds West 1,500.00 feet to a point having Coordinates of X = 2,299,813.44 and Y = 221,298.19; thence North 65 degrees 47 minutes 49 seconds East 832.20 feet to a point having Coordinates of X = 2,300,572.49 and Y = 221,639.37; thence North 65 degrees 43 minutes 52 seconds East 1,057.33 feet to a point having Coordinates of X = 2,301,536.38 and Y = 222,073.96; thence North 61 degrees 42 minutes 39 seconds East 620.85 feet to a point having Coordinates of X = 2,302,083.09 and Y = 222,368.19; thence North 58 degrees 24 minutes 18 seconds East 560.11 feet to a point having Coordinates of X = 2,302,560.17 and Y = 222,661.64; thence North 58 degrees 54 minutes 46 seconds East 661.17 feet to a point having Coordinates of X = 2,303,126.38 and Y = 223,003.03; thence South 26 degrees 00 minutes 00 seconds East for 1580.00 feet, to the average low water plane of said Mississippi River, having a Coordinate of X = 2,303,819.01 and Y = 221,582.93; thence South 64 degrees 00 minutes 00 seconds West 3,725.00 feet to the point of beginning, containing approximately **120 acres**, all as more particularly outlined on a plat on file in the Office of Mineral Resources, Department of Natural Resources. All bearings, distances and coordinates are based on Louisiana Coordinate System of 1927, (North or South Zone), where applicable.

NOTE: The above description of the Tract nominated for lease has been provided and corrected, where required, exclusively by the nomination party. Any mineral lease selected from this Tract and awarded by the Louisiana State Mineral Board shall be without warranty of any kind, either express, implied, or statutory, including, but not limited to, the implied warranties of merchantability and fitness for a particular purpose. Should the mineral lease awarded by the Louisiana State Mineral Board be subsequently modified, cancelled or abrogated due to the existence of conflicting leases, operating agreements, private claims or other future obligations or conditions which may affect all or any portion of the leased Tract, it shall not relieve the Lessee of the obligation to pay any bonus due thereon to the Louisiana State Mineral Board, nor shall the Louisiana State Mineral Board be obligated to refund any consideration paid by the Lessor prior to such modification, cancellation, or abrogation, including, but not limited to, bonuses, rentals and royalties.

Applicant: RABB RESOURCES, LTD

Bidder	Cash Payment	Price/ Acre	Rental	Oil	Gas	Other





**TRACT 39515 - St. Landry Parish, Louisiana**

All of the lands now or formerly constituting the beds and bottoms of all water bodies of every nature and description as to which title is vested in the State of Louisiana, together with all islands arising therein and other lands formed by accretion or by reliction, where allowed by law, excepting tax adjudicated lands, and not presently under mineral lease on December 12, 2007, situated in St. Landry Parish, Louisiana, and more particularly described as follows: Beginning at a point having Coordinates of X = 1,805,750.00 and Y = 692,250.00; thence East 13,250.00 feet to a point having Coordinates of X = 1,819,000.00 and Y = 692,250.00; thence South 7,250.00 feet to a point having Coordinates of X = 1,819,000.00 and Y = 685,000.00; thence West 13,250.00 feet to a point having Coordinates of X = 1,805,750.00 and Y = 685,000.00; thence North 7,250.00 feet to the point of beginning, **LESS AND EXCEPT** those portions of State Lease No. 10648, that lies within the above described tract, containing approximately **50 acres**, all as more particularly outlined on a plat on file in the Office of Mineral Resources, Department of Natural Resources. All bearings, distances and coordinates are based on Louisiana Coordinate System of 1927, (North or South Zone), where applicable.

NOTE: The above description of the Tract nominated for lease has been provided and corrected, where required, exclusively by the nomination party. Any mineral lease selected from this Tract and awarded by the Louisiana State Mineral Board shall be without warranty of any kind, either express, implied, or statutory, including, but not limited to, the implied warranties of merchantability and fitness for a particular purpose. Should the mineral lease awarded by the Louisiana State Mineral Board be subsequently modified, cancelled or abrogated due to the existence of conflicting leases, operating agreements, private claims or other future obligations or conditions which may affect all or any portion of the leased Tract, it shall not relieve the Lessee of the obligation to pay any bonus due thereon to the Louisiana State Mineral Board, nor shall the Louisiana State Mineral Board be obligated to refund any consideration paid by the Lessor prior to such modification, cancellation, or abrogation, including, but not limited to, bonuses, rentals and royalties.

Applicant: THEOPHILUS OIL, GAS & LAND SERVICES, LLC

Bidder	Cash Payment	Price/Acre	Rental	Oil	Gas	Other







**TRACT 39516 - Evangeline Parish, Louisiana**

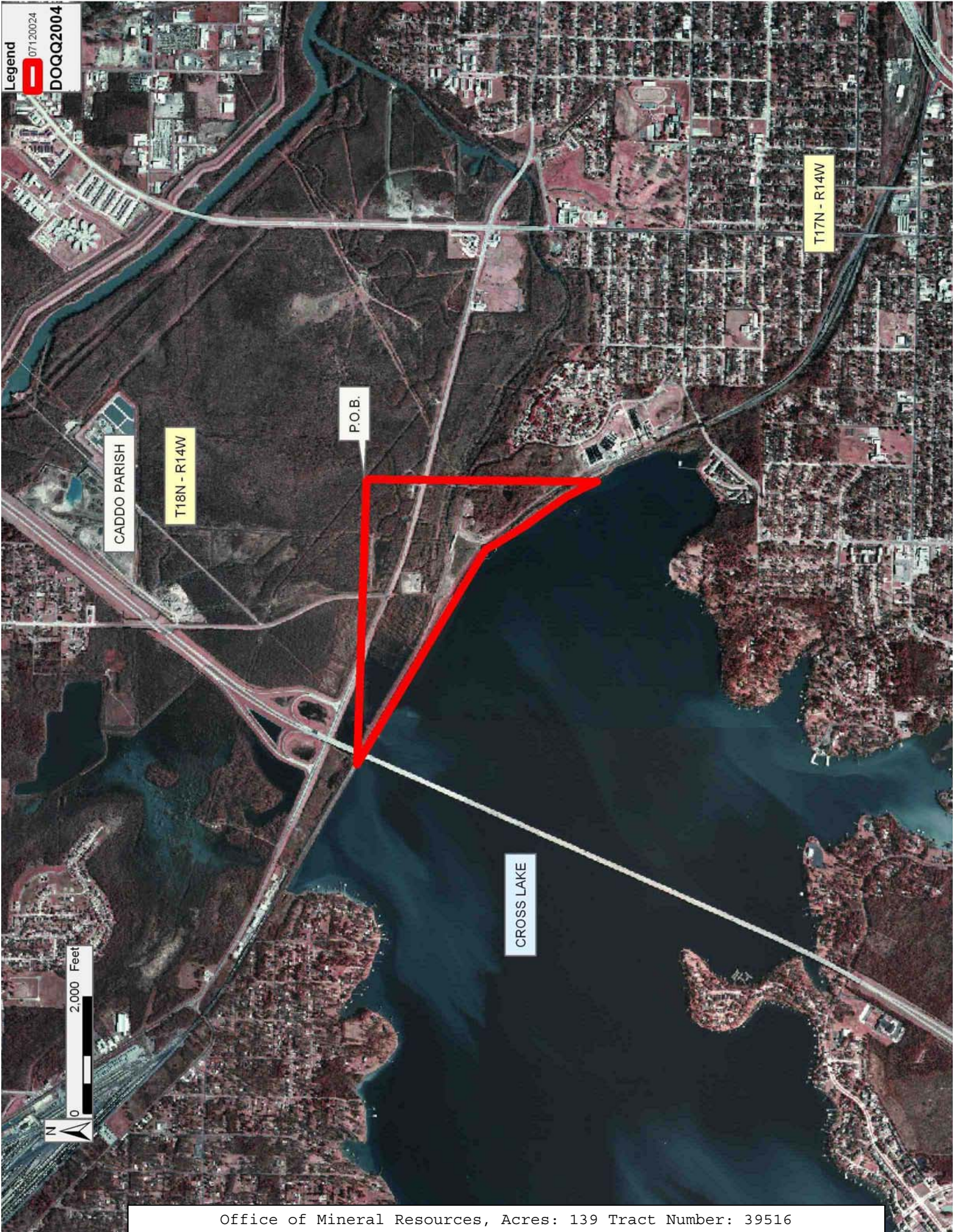
All of the lands now or formerly constituting the beds and bottoms of all water bodies of every nature and description as to which title is vested in the State of Louisiana, together with all islands arising therein and other lands formed by accretion or by reliction, where allowed by law, excepting tax adjudicated lands, and not presently under mineral lease on December 12, 2007, situated in Evangeline Parish, Louisiana, and more particularly described as follows: Beginning at a point having Coordinates of X = 1,601,059.64 and Y = 675,920.39; thence South 00 degrees 02 minutes 52 seconds East approximately 3,953 feet to a point on the Northeast boundary of State Lease No. 12847; thence Northwesterly along said boundary of said State Lease No. 12847 to a point of intersection with a line bearing North 88 degrees 38 minutes 19 seconds West extended from a point having Coordinates of X = 1,601,059.64 and Y = 675,920.39; thence South 88 degrees 38 minutes 19 seconds East approximately 4,892 feet to the point of beginning, the above described tract is also being that portion of the former bed of Cross Lake lying below the 172 foot contour line, **LESS AND EXCEPT** if any, that portion of State Lease No. 12847 that may lie within the above describes tract, containing approximately **139 acres**, all as more particularly outlined on a plat on file in the Office of Mineral Resources, Department of Natural Resources. All bearings, distances and coordinates are based on Louisiana Coordinate System of 1927, (North or South Zone), where applicable.

NOTE: The above description of the Tract nominated for lease has been provided and corrected, where required, exclusively by the nomination party. Any mineral lease selected from this Tract and awarded by the Louisiana State Mineral Board shall be without warranty of any kind, either express, implied, or statutory, including, but not limited to, the implied warranties of merchantability and fitness for a particular purpose. Should the mineral lease awarded by the Louisiana State Mineral Board be subsequently modified, cancelled or abrogated due to the existence of conflicting leases, operating agreements, private claims or other future obligations or conditions which may affect all or any portion of the leased Tract, it shall not relieve the Lessee of the obligation to pay any bonus due thereon to the Louisiana State Mineral Board, nor shall the Louisiana State Mineral Board be obligated to refund any consideration paid by the Lessor prior to such modification, cancellation, or abrogation, including, but not limited to, bonuses, rentals and royalties.

Applicant: THEOPHILUS OIL, GAS & LAND SERVICES, LLC

Bidder	Cash Payment	Price/ Acre	Rental	Oil	Gas	Other







**TRACT 39517 - St. James Parish, Louisiana**

All of the lands now or formerly constituting the beds and bottoms of all water bodies of every nature and description as to which title is vested in the State of Louisiana, together with all islands arising therein and other lands formed by accretion or by reliction, where allowed by law, excepting tax adjudicated lands, and not presently under mineral lease on December 12, 2007, situated in St. James Parish, Louisiana, and more particularly described as follows: Beginning at a point having Coordinates of X = 2,167,405.86 and Y = 494,158.29; thence East 18,480.00 feet to a point having Coordinates of X = 2,185,885.86 and Y = 494,158.29; thence South 10,000.00 feet to a point having Coordinates of X = 2,185,885.86 and Y = 484,158.29; thence West 18,480.00 feet to a point having Coordinates of X = 2,167,405.86 and Y = 484,158.29; thence North 10,000.00 feet to the point of beginning, containing approximately **1,239 acres**, all as more particularly outlined on a plat on file in the Office of Mineral Resources, Department of Natural Resources. All bearings, distances and coordinates are based on Louisiana Coordinate System of 1927, (North or South Zone), where applicable.

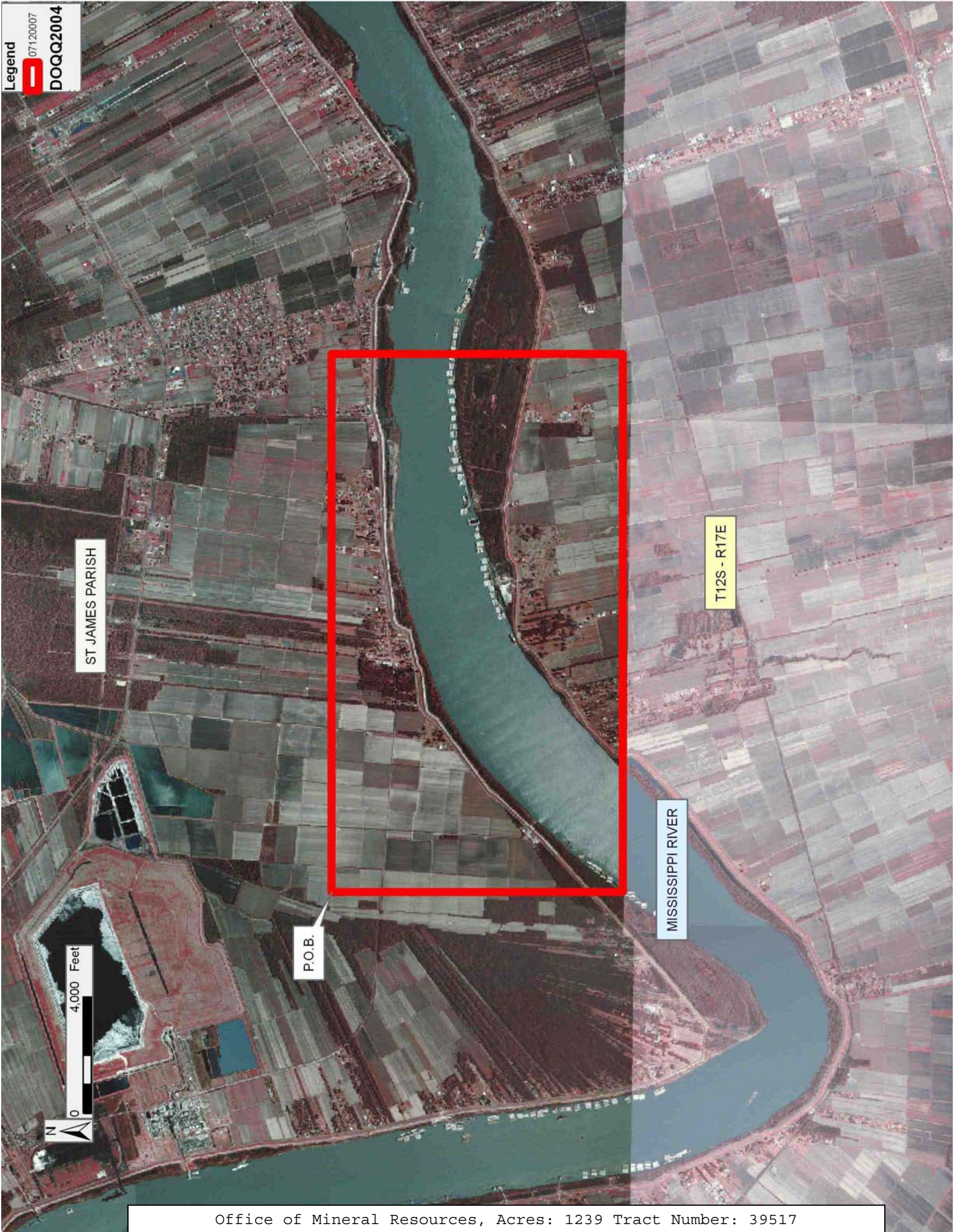
NOTE: The above description of the Tract nominated for lease has been provided and corrected, where required, exclusively by the nomination party. Any mineral lease selected from this Tract and awarded by the Louisiana State Mineral Board shall be without warranty of any kind, either express, implied, or statutory, including, but not limited to, the implied warranties of merchantability and fitness for a particular purpose. Should the mineral lease awarded by the Louisiana State Mineral Board be subsequently modified, cancelled or abrogated due to the existence of conflicting leases, operating agreements, private claims or other future obligations or conditions which may affect all or any portion of the leased Tract, it shall not relieve the Lessee of the obligation to pay any bonus due thereon to the Louisiana State Mineral Board, nor shall the Louisiana State Mineral Board be obligated to refund any consideration paid by the Lessor prior to such modification, cancellation, or abrogation, including, but not limited to, bonuses, rentals and royalties.

NOTE: The State of Louisiana does hereby reserve, and this lease shall be subject to, the imprescriptible right of surface use in the nature of a servitude in favor of the Department of Natural Resources, including its Offices and Commissions, for the sole purpose of implementing, constructing, servicing and maintaining approved coastal zone management and/or restoration projects. Utilization of any and all rights derived under this lease by the mineral lessee, its agents, successors or assigns, shall not interfere with nor hinder the reasonable surface use by the Department of Natural Resources, its Offices or Commissions, as herein above reserved.



Applicant: CYPRESS ENERGY CORPORATION

Bidder	Cash Payment	Price/ Acre	Rental	Oil	Gas	Other





**TRACT 39518 - Jefferson and St. Charles Parishes, Louisiana**

All of the lands now or formerly constituting the beds and bottoms of all water bodies of every nature and description as to which title is vested in the State of Louisiana, together with all islands arising therein and other lands formed by accretion or by reliction, where allowed by law, excepting tax adjudicated lands, and not presently under mineral lease on December 12, 2007, situated in Jefferson and St. Charles Parishes, Louisiana, and more particularly described as follows: Beginning the point of beginning having a coordinate of X = 2,331,733.73 and Y = 449,398.48 and being the Southwest corner of State Lease No. 18958; and traveling along the southern line of said State Lease No. 18958; thence North 87 degrees 53 minutes 40 seconds East 1,813.17 feet, to a point having Coordinates of X = 2,333,545.67 and Y = 449,465.10; thence North 88 degrees 54 minutes 48 seconds East 2,195.55 feet, to a point having Coordinates of X = 2,335,740.83 and Y = 449,506.73; thence North 88 degrees 58 minutes 59 seconds East 2,855.17 feet, to a point having Coordinates of X = 2,338,595.55 and Y = 449,557.40; thence North 48 degrees 44 minutes 16 seconds East 1,125.38 feet, to a point having Coordinates of X = 2,339,441.50 and Y = 450,299.60; thence North 49 degrees 45 minutes 43 seconds East 1,145.61 feet, to a point having Coordinates of X = 2,340,316.02 and Y = 451,039.63; thence East 7,496.60 feet, to a point having a coordinate of X = 2,347,812.62 and Y = 451,039.63; thence South 8,177.05 feet to point having Coordinates of X = 2,347,812.62 and Y = 442,862.58; thence West 16,078.90 feet to point having Coordinates of X = 2,331,733.72 and Y = 442,862.58; thence North 6,535.90 feet to the point of beginning, **LESS AND EXCEPT** that portion, if any, that may lie within the boundaries of the Salvador Wildlife Management Area containing approximately **70 acres**, all as more particularly outlined on a plat on file in the Office of Mineral Resources, Department of Natural Resources. All bearings, distances and coordinates are based on Louisiana Coordinate System of 1927, (North or South Zone), where applicable.

NOTE: The above description of the Tract nominated for lease has been provided and corrected, where required, exclusively by the nomination party. Any mineral lease selected from this Tract and awarded by the Louisiana State Mineral Board shall be without warranty of any kind, either express, implied, or statutory, including, but not limited to, the implied warranties of merchantability and fitness for a particular purpose. Should the mineral lease awarded by the Louisiana State Mineral Board be subsequently modified, cancelled or abrogated due to the existence of conflicting leases, operating agreements, private claims or other future obligations or conditions which may affect all or any portion of the leased Tract, it shall not relieve the Lessee of the obligation to pay any bonus due thereon to the Louisiana State Mineral Board, nor shall the Louisiana State Mineral Board be obligated to refund any consideration paid by the Lessor prior to such modification, cancellation, or abrogation, including, but not limited to, bonuses, rentals and royalties.

NOTE: The State of Louisiana does hereby reserve, and this lease shall be subject to, the imprescriptible right of surface use in the nature of a servitude in favor of the Department of Natural Resources, including its Offices and Commissions, for the sole purpose of implementing, constructing, servicing and maintaining approved coastal zone management and/or restoration projects. Utilization of any and all rights derived under this lease by the mineral lessee, its agents, successors or assigns, shall not interfere with nor hinder the reasonable surface use by the Department of Natural Resources, its Offices or Commissions, as herein above reserved.

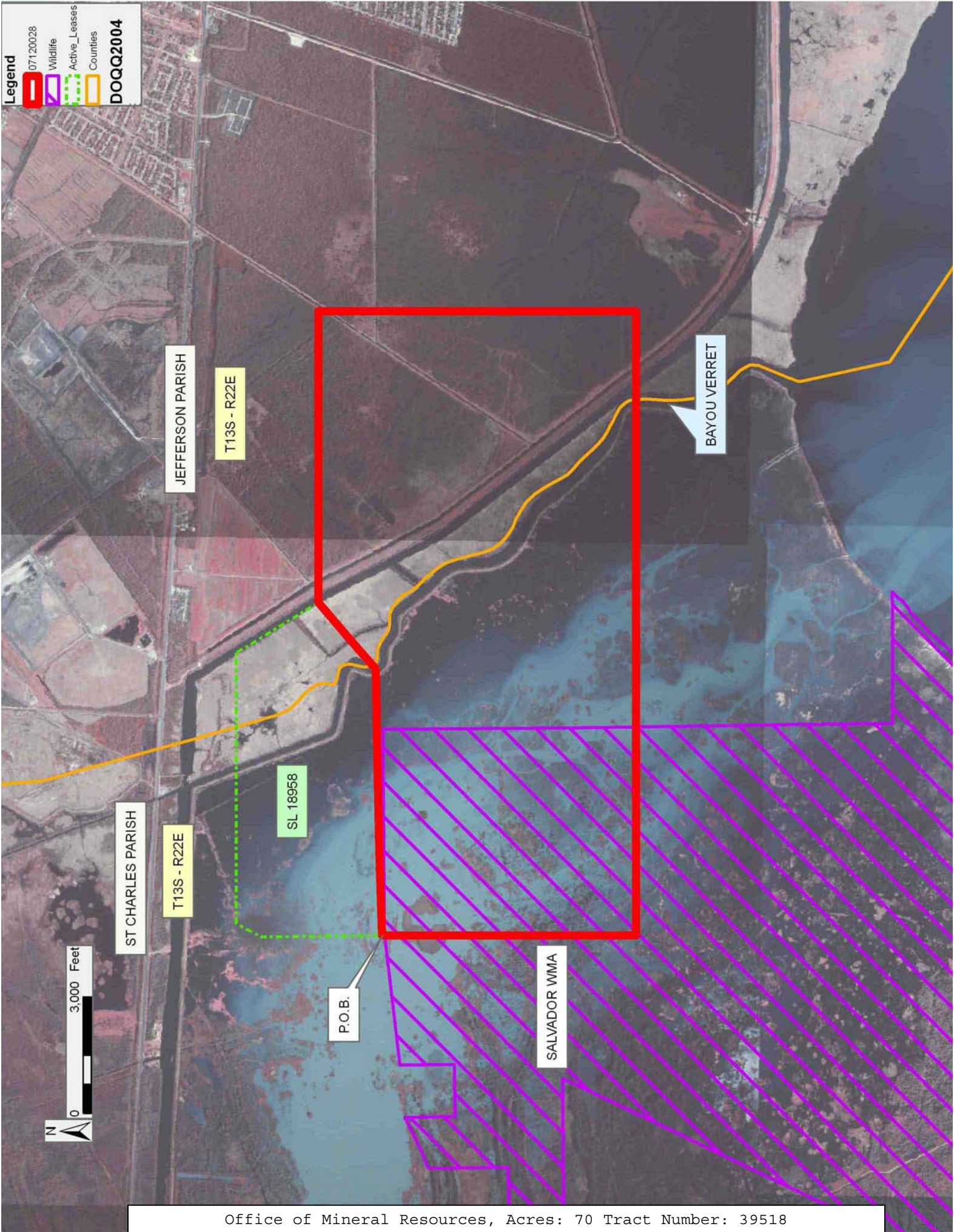
Applicant: JOHN LANDRY

Bidder	Cash Payment	Price/ Acre	Rental	Oil	Gas	Other



**Legend**

- 07120028
- Wildlife
- Active\_Leases
- Counties
- DOQQ2004



**TRACT 39519 - Jefferson and St. Charles Parishes, Louisiana**

All of the lands now or formerly constituting the beds and bottoms of all water bodies of every nature and description as to which title is vested in the State of Louisiana, together with all islands arising therein and other lands formed by accretion or by reliction, where allowed by law, excepting tax adjudicated lands, and not presently under mineral lease on December 12, 2007, situated in Jefferson and St. Charles Parishes, Louisiana, and more particularly described as follows: Beginning the point of beginning having a coordinate of X = 2,331,733.72 and Y = 442,862.58; thence East 18,221.71 feet, to a point having Coordinates of X = 2,349,955.43 and Y = 442,862.58; thence South 10,265.21 feet, to a point having Coordinates of X = 2,349,955.43 and Y = 432,597.37; thence West 18,221.71 feet, to a point having Coordinates of X = 2,331,733.72 and Y = 432,597.37; thence North 10,265.21 feet, to the point of beginning, **LESS AND EXCEPT** that portion, if any, that may lie within the boundaries of the Salvador Wildlife Management Area containing approximately **1,388 acres**, all as more particularly outlined on a plat on file in the Office of Mineral Resources, Department of Natural Resources. All bearings, distances and coordinates are based on Louisiana Coordinate System of 1927, (North or South Zone), where applicable.

NOTE: The above description of the Tract nominated for lease has been provided and corrected, where required, exclusively by the nomination party. Any mineral lease selected from this Tract and awarded by the Louisiana State Mineral Board shall be without warranty of any kind, either express, implied, or statutory, including, but not limited to, the implied warranties of merchantability and fitness for a particular purpose. Should the mineral lease awarded by the Louisiana State Mineral Board be subsequently modified, cancelled or abrogated due to the existence of conflicting leases, operating agreements, private claims or other future obligations or conditions which may affect all or any portion of the leased Tract, it shall not relieve the Lessee of the obligation to pay any bonus due thereon to the Louisiana State Mineral Board, nor shall the Louisiana State Mineral Board be obligated to refund any consideration paid by the Lessor prior to such modification, cancellation, or abrogation, including, but not limited to, bonuses, rentals and royalties.

NOTE: The State of Louisiana does hereby reserve, and this lease shall be subject to, the imprescriptible right of surface use in the nature of a servitude in favor of the Department of Natural Resources, including its Offices and Commissions, for the sole purpose of implementing, constructing, servicing and maintaining approved coastal zone management and/or restoration projects. Utilization of any and all rights derived under this lease by the mineral lessee, its agents, successors or assigns, shall not interfere with nor hinder the reasonable surface use by the Department of Natural Resources, its Offices or Commissions, as herein above reserved.



Applicant: JOHN LANDRY

Bidder	Cash Payment	Price/ Acre	Rental	Oil	Gas	Other

Legend

07/20027

Wildlife

Counties

DOQQ2004

0

3,000 Feet

N

ST CHARLES PARISH

BAYOU VERRET

JEFFERSON PARISH

T14S - R22E

SALVADOR WMA

P.O.B.

T14S - R21E

LAKE CATAOUATCHIE

Office of Mineral Resources, Acres: 1388 Tract Number: 39519



**TRACT 39520 - Jefferson and St. Charles Parishes, Louisiana**

All of the lands now or formerly constituting the beds and bottoms of all water bodies of every nature and description as to which title is vested in the State of Louisiana, together with all islands arising therein and other lands formed by accretion or by reliction, where allowed by law, excepting tax adjudicated lands, and not presently under mineral lease on December 12, 2007, situated in Jefferson and St. Charles Parishes, Louisiana, and more particularly described as follows: Beginning the point of beginning having a coordinate of X = 2,349,955.43 and Y = 442,862.58; thence East 7,930.00 feet, to a point having Coordinates of X = 2,357,885.43 and Y = 442,862.58; thence South 15,022.09 feet, to a point having Coordinates of X = 2,357,885.43 and Y = 427,840.49; thence West 7,930.00 feet, to a point having Coordinates of X = 2,349,955.43 and Y = 427,840.49; thence North 15,022.09 feet, to the point of beginning, containing approximately **1,469 acres**, all as more particularly outlined on a plat on file in the Office of Mineral Resources, Department of Natural Resources. All bearings, distances and coordinates are based on Louisiana Coordinate System of 1927, (North or South Zone), where applicable.

NOTE: The above description of the Tract nominated for lease has been provided and corrected, where required, exclusively by the nomination party. Any mineral lease selected from this Tract and awarded by the Louisiana State Mineral Board shall be without warranty of any kind, either express, implied, or statutory, including, but not limited to, the implied warranties of merchantability and fitness for a particular purpose. Should the mineral lease awarded by the Louisiana State Mineral Board be subsequently modified, cancelled or abrogated due to the existence of conflicting leases, operating agreements, private claims or other future obligations or conditions which may affect all or any portion of the leased Tract, it shall not relieve the Lessee of the obligation to pay any bonus due thereon to the Louisiana State Mineral Board, nor shall the Louisiana State Mineral Board be obligated to refund any consideration paid by the Lessor prior to such modification, cancellation, or abrogation, including, but not limited to, bonuses, rentals and royalties.

NOTE: The State of Louisiana does hereby reserve, and this lease shall be subject to, the imprescriptible right of surface use in the nature of a servitude in favor of the Department of Natural Resources, including its Offices and Commissions, for the sole purpose of implementing, constructing, servicing and maintaining approved coastal zone management and/or restoration projects. Utilization of any and all rights derived under this lease by the mineral lessee, its agents, successors or assigns, shall not interfere with nor hinder the reasonable surface use by the Department of Natural Resources, its Offices or Commissions, as herein above reserved.

Applicant: JOHN LANDRY

Bidder	Cash Payment	Price/ Acre	Rental	Oil	Gas	Other



Legend

07/20026

Counties

DOQQ2004

JEFFERSON PARISH

T14S - R22E

P.O.B.

ST CHARLES PARISH

LAKE CATAOUATCHIE

0 4,000 Feet

N

Office of Mineral Resources, Acres: 1469 Tract Number: 39520

**TRACT 39521 - Portion of Block 25, Chandeleur Sound Area, St. Bernard Parish, Louisiana**

All of the lands now or formerly constituting the beds and bottoms of all water bodies of every nature and description as to which title is vested in the State of Louisiana, together with all islands arising therein and other lands formed by accretion or by reliction, where allowed by law, excepting tax adjudicated lands, and not presently under mineral lease on December 12, 2007, situated in St. Bernard Parish, Louisiana, and more particularly described as follows: Beginning at the Southwest corner of Block 25, Chandeleur Sound Area, having Coordinates of X = 2,650,100.00 and Y = 425,580.00; thence North 7,375.00 feet on the West line of said Block 25 to a point having Coordinates of X = 2,650,100.00 and Y = 432,955.00; thence East 9,833.00 feet to a point having Coordinates of X = 2,659,933.00 and Y = 432,955.00; thence South 7,375.00 feet to a point on the South line of said Block 25 having Coordinates of X = 2,659,933.00 and Y = 425,580.00; thence West 9,833.00 feet to the point of beginning, containing approximately **1582 acres**, all as more particularly outlined on a plat on file in the Office of Mineral Resources, Department of Natural Resources. All bearings, distances and coordinates are based on Louisiana Coordinate System of 1927, (North or South Zone), where applicable.

NOTE: The above description of the Tract nominated for lease has been provided and corrected, where required, exclusively by the nomination party. Any mineral lease selected from this Tract and awarded by the Louisiana State Mineral Board shall be without warranty of any kind, either express, implied, or statutory, including, but not limited to, the implied warranties of merchantability and fitness for a particular purpose. Should the mineral lease awarded by the Louisiana State Mineral Board be subsequently modified, cancelled or abrogated due to the existence of conflicting leases, operating agreements, private claims or other future obligations or conditions which may affect all or any portion of the leased Tract, it shall not relieve the Lessee of the obligation to pay any bonus due thereon to the Louisiana State Mineral Board, nor shall the Louisiana State Mineral Board be obligated to refund any consideration paid by the Lessor prior to such modification, cancellation, or abrogation, including, but not limited to, bonuses, rentals and royalties.

NOTE: The Office of Mineral Resources will require a minimum bonus of \$230 per acre and a minimum royalty of 23%.

NOTE: The State of Louisiana does hereby reserve, and this lease shall be subject to, the imprescriptible right of surface use in the nature of a servitude in favor of the Department of Natural Resources, including its Offices and Commissions, for the sole purpose of implementing, constructing, servicing and maintaining approved coastal zone management and/or restoration projects. Utilization of any and all rights derived under this lease by the mineral lessee, its agents, successors or assigns, shall not interfere with nor hinder the reasonable surface use by the



Department of Natural Resources, its Offices or Commissions, as herein above reserved.

NOTE: The Department of Wildlife and Fisheries has designated certain areas in the coastal waters of the State of Louisiana as Oyster Seed Bed Areas. The exact location of those Seed Bed Areas must be obtained from the Department of Wildlife and Fisheries and any work done under a mineral lease from the State of Louisiana may necessarily be conducted in conformity with the rules and regulations promulgated by the said Department of Wildlife and Fisheries for Oyster Seed Bed Areas.

Applicant: STL ENERGY, LLC

Bidder	Cash Payment	Price/ Acre	Rental	Oil	Gas	Other

Legend

07120002

Blocks

DOQQ2004

CHANDELEUR SOUND

ST BERNARD PARISH

MORGAN HARBOR

CS0025

CHANDELEUR SOUND AREA

CS0042

P.O.B.

