

TRACT 39500 - Portion of Block 17, West Cameron Area, Revised, Cameron Parish, Louisiana

The beds and bottoms of all water bodies belonging to the State of Louisiana located in Block 17, West Cameron Area, Revised, together with any present lands formed by accretion to the shoreline or islands formed therein, located in Cameron Parish, Louisiana, owned by and not presently under mineral lease as of December 12, 2007, from the State of Louisiana, the geographical area of which is more fully described as follows: Beginning at a point on the Western boundary of State Lease No. 3839 having Coordinates of X = 1,236,492.21 and Y = 386,411.22; thence South 45 degrees 00 minutes 00 seconds West 10,435.52 feet along the Western boundary of said State Lease No. 3839 to its Southwest corner, also being the Southwest corner of Block 17, West Cameron Area, Revised, having Coordinates of X = 1,229,113.18 and Y = 379,032.19; thence North 7,379.03 feet along the West line of said Block 17 to a point having Coordinates of X = 1,229,113.18 and Y = 386,411.22; thence East 7,379.03 feet to the point of beginning, containing approximately **625.00 acres**, all as more particularly outlined on a plat on file in the Office of Mineral Resources, Department of Natural Resources. All bearings, distances and coordinates are based on Louisiana Coordinate System of 1927, (North or South Zone).




NOTE: The above description of the Tract nominated for lease has been provided and corrected, where required, exclusively by the nomination party. Any mineral lease selected from this Tract and awarded by the Louisiana State Mineral Board shall be without warranty of any kind, either express, implied, or statutory, including, but not limited to, the implied warranties of merchantability and fitness for a particular purpose. Should the mineral lease awarded by the Louisiana State Mineral Board be subsequently modified, cancelled or abrogated due to the existence of conflicting leases, operating agreements, private claims or other future obligations or conditions which may affect all or any portion of the leased Tract, it shall not relieve the Lessee of the obligation to pay any bonus due thereon to the Louisiana State Mineral Board, nor shall the Louisiana State Mineral Board be obligated to refund any consideration paid by the Lessor prior to such modification, cancellation, or abrogation, including, but not limited to, bonuses, rentals and royalties.

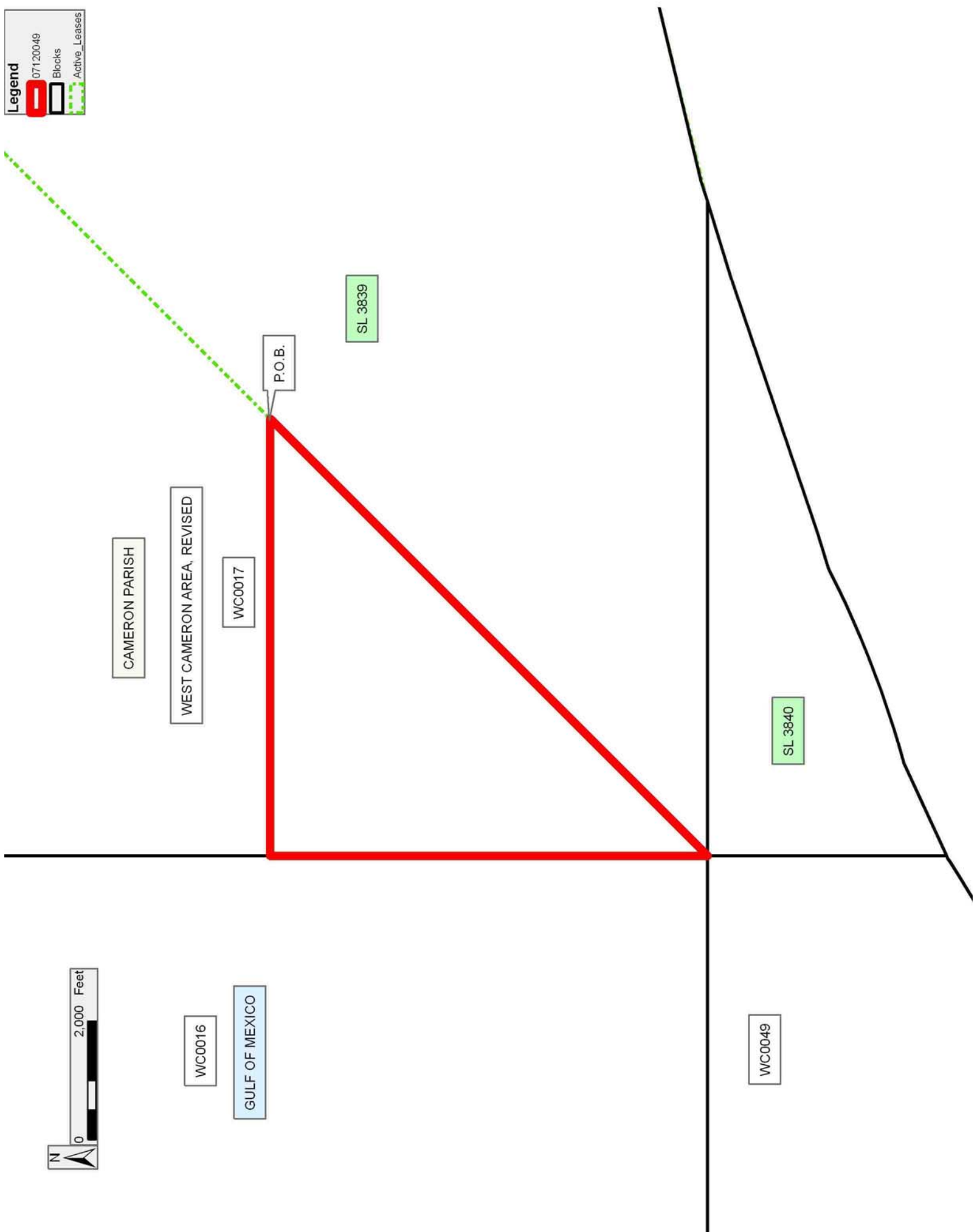
NOTE: The State of Louisiana does hereby reserve, and this lease shall be subject to, the imprescriptible right of surface use in the nature of a servitude in favor of the Department of Natural Resources, including its Offices and Commissions, for the sole purpose of implementing, constructing, servicing and maintaining approved coastal zone management and/or restoration projects. Utilization of any and all rights derived under this lease by the mineral lessee, its agents, successors or assigns, shall not interfere with nor hinder the reasonable surface use by the Department of Natural Resources, its Offices or Commissions, as herein above reserved.

Applicant: SOUTH LOUISIANA MINERALS, INC.

Bidder	Cash Payment	Price/Acre	Rental	Oil	Gas	Other

Legend

-  07120049
-  Blocks
-  Active_Leases



TRACT 39501 - Portion of Block 2, Sabine Pass Area, Cameron Parish, Louisiana

The beds and bottoms of all water bodies belonging to the State of Louisiana located in Block 2, Sabine Pass Area, together with any present lands formed by accretion to the shoreline or islands formed therein, located in Cameron Parish, Louisiana, owned by and not presently under mineral lease as of December 12, 2007, from the State of Louisiana, the geographical area of which is more fully described as follows: Beginning at a point on the East line of Block 2, Sabine Pass Area, having Coordinates of X = 1,214,355.14 and Y = 364,519.51; thence West 6,026.25 feet to a point located on the Texas-Louisiana boundary, also being the West boundary of said Block 2 having Coordinates of X = 1,208,328.89 and Y = 364,519.51; thence North 11 degrees 27 minutes 20 seconds West 14,807.66 feet along said Texas-Louisiana boundary, also being the West boundary of said Block 2 to its Northwest corner having Coordinates of X = 1,205,388.00 and Y = 379,032.19; thence East 8,967.14 feet along the North line of said Block 2 to its Northeast corner having Coordinates of X = 1,214,355.14 and Y = 379,032.19; thence South 14,512.68 feet along the East line of said Block 2 to the point of beginning, containing approximately **2,497.64 acres, LESS AND EXCEPT** that portion thereof, if any, located West of the boundary line between the States of Texas and Louisiana as determined by the report of the Special Master and adjudicated by the Supreme Court of the United States in litigation styled **Texas v. Louisiana, et al No. 36 Original**, or as otherwise approved by said court, all as more particularly outlined on a plat on file in the Office of Mineral Resources, Department of Natural Resources. All bearings, distances and coordinates are based on Louisiana Coordinate System of 1927, (North or South Zone).

NOTE: The above description of the Tract nominated for lease has been provided and corrected, where required, exclusively by the nomination party. Any mineral lease selected from this Tract and awarded by the Louisiana State Mineral Board shall be without warranty of any kind, either express, implied, or statutory, including, but not limited to, the implied warranties of merchantability and fitness for a particular purpose. Should the mineral lease awarded by the Louisiana State Mineral Board be subsequently modified, cancelled or abrogated due to the existence of conflicting leases, operating agreements, private claims or other future obligations or conditions which may affect all or any portion of the leased Tract, it shall not relieve the Lessee of the obligation to pay any bonus due thereon to the Louisiana State Mineral Board, nor shall the Louisiana State Mineral Board be obligated to refund any consideration paid by the Lessor prior to such modification, cancellation, or abrogation, including, but not limited to, bonuses, rentals and royalties.

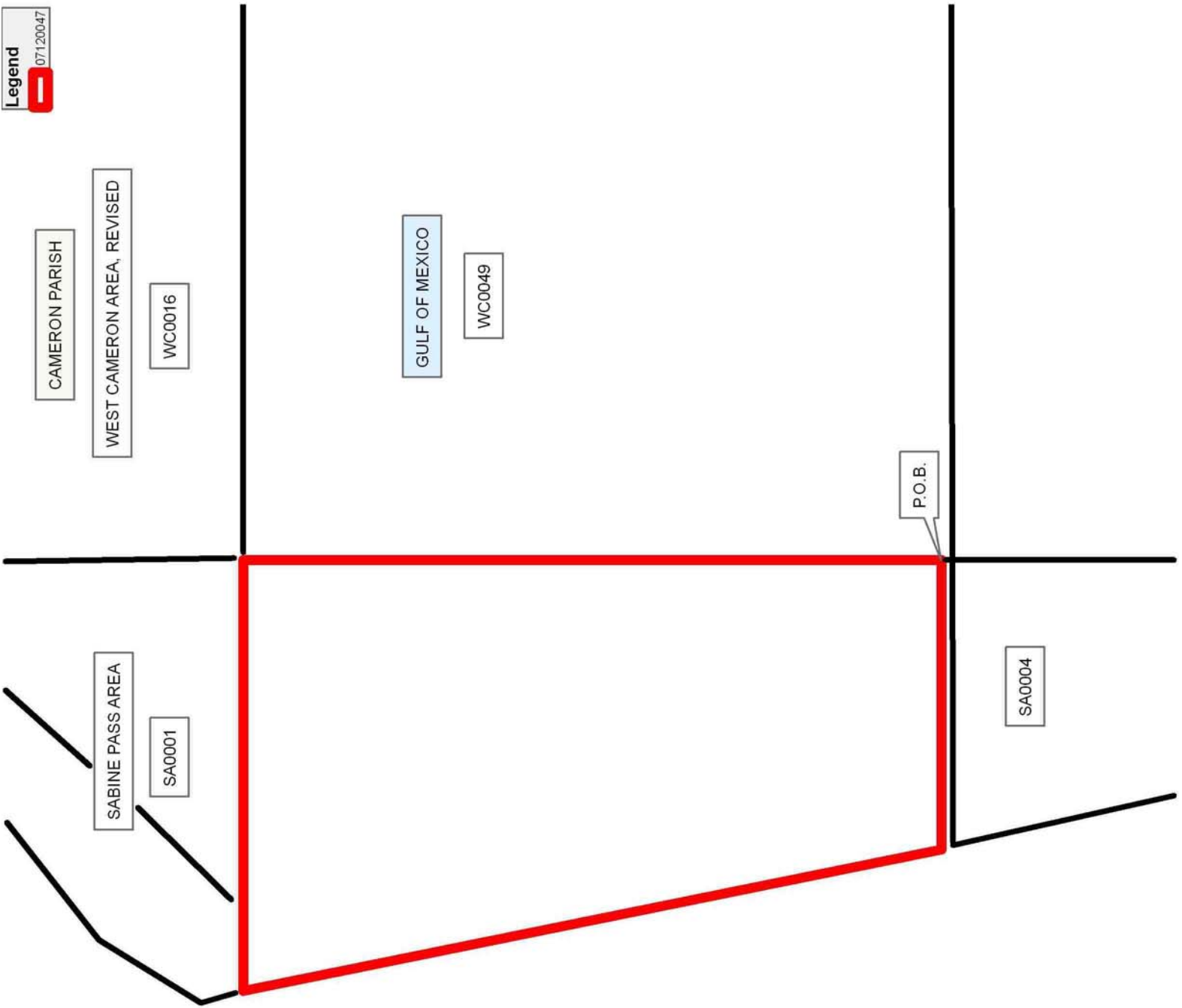
NOTE: The State of Louisiana does hereby reserve, and this lease shall be subject to, the imprescriptible right of surface use in the nature of a servitude in favor of the Department of Natural Resources, including its Offices and Commissions, for the sole purpose of implementing,

constructing, servicing and maintaining approved coastal zone management and/or restoration projects. Utilization of any and all rights derived under this lease by the mineral lessee, its agents, successors or assigns, shall not interfere with nor hinder the reasonable surface use by the Department of Natural Resources, its Offices or Commissions, as herein above reserved.

NOTE: It appears, according to our records, that a portion of this Tract is located within the restrictive safety fairway area as set out by the Corps of Engineers, U.S. Army and/or the restrictive anchorage area as set out by the U.S. Coast Guard.

Applicant: SOUTH LOUISIANA MINERALS, INC.

Bidder	Cash Payment	Price/Acre	Rental	Oil	Gas	Other



TRACT 39502 - Portion of Block 49, West Cameron Area, Revised, Cameron Parish, Louisiana

The beds and bottoms of all water bodies belonging to the State of Louisiana located in Block 49, West Cameron Area, Revised, together with any present lands formed by accretion to the shoreline or islands formed therein, located in Cameron Parish, Louisiana, owned by and not presently under mineral lease as of December 12, 2007, from the State of Louisiana, the geographical area of which is more fully described as follows: Beginning at a point on the North line of Block 49, West Cameron Area, Revised, having Coordinates of X = 1,221,734.16 and Y = 379,032.19; thence South 7,758.05 feet to the Northeast corner of State Lease No. 16017 having Coordinates of X = 1,221,734.16 and Y = 371,274.14; thence West 4,379.02 feet along the North boundary of said State Lease No. 16017 to its Northwest corner, also being the Northeast corner of State Lease No. 16185 having Coordinates of X = 1,217,355.14 and Y = 371,274.14; thence along the boundary of said State Lease No. 16185 the following courses: West 1,100.00 feet to its Northwest corner having Coordinates of X = 1,216,255.14 and Y = 371,274.14 and South 6,754.63 feet to a point having Coordinates of X = 1,216,255.14 and Y = 364,519.51; thence West 1,900.00 feet to a point on the West line of said Block 49 having Coordinates of X = 1,214,355.14 and Y = 364,519.51; thence North 14,512.68 feet along the West line of said Block 49 to its Northwest corner having Coordinates of X = 1,214,355.14 and Y = 379,032.19; thence East 7,379.02 feet along the North line of said Block 49 to the point of beginning, containing approximately **1,608.83 acres**, all as more particularly outlined on a plat on file in the Office of Mineral Resources, Department of Natural Resources. All bearings, distances and coordinates are based on Louisiana Coordinate System of 1927, (North or South Zone).

NOTE: The above description of the Tract nominated for lease has been provided and corrected, where required, exclusively by the nomination party. Any mineral lease selected from this Tract and awarded by the Louisiana State Mineral Board shall be without warranty of any kind, either express, implied, or statutory, including, but not limited to, the implied warranties of merchantability and fitness for a particular purpose. Should the mineral lease awarded by the Louisiana State Mineral Board be subsequently modified, cancelled or abrogated due to the existence of conflicting leases, operating agreements, private claims or other future obligations or conditions which may affect all or any portion of the leased Tract, it shall not relieve the Lessee of the obligation to pay any bonus due thereon to the Louisiana State Mineral Board, nor shall the Louisiana State Mineral Board be obligated to refund any consideration paid by the Lessor prior to such modification, cancellation, or abrogation, including, but not limited to, bonuses, rentals and royalties.

NOTE: The State of Louisiana does hereby reserve, and this lease shall be subject to, the imprescriptible right of surface use in the nature of a servitude in favor of the Department of Natural Resources, including its Offices and Commissions, for the sole purpose of implementing,

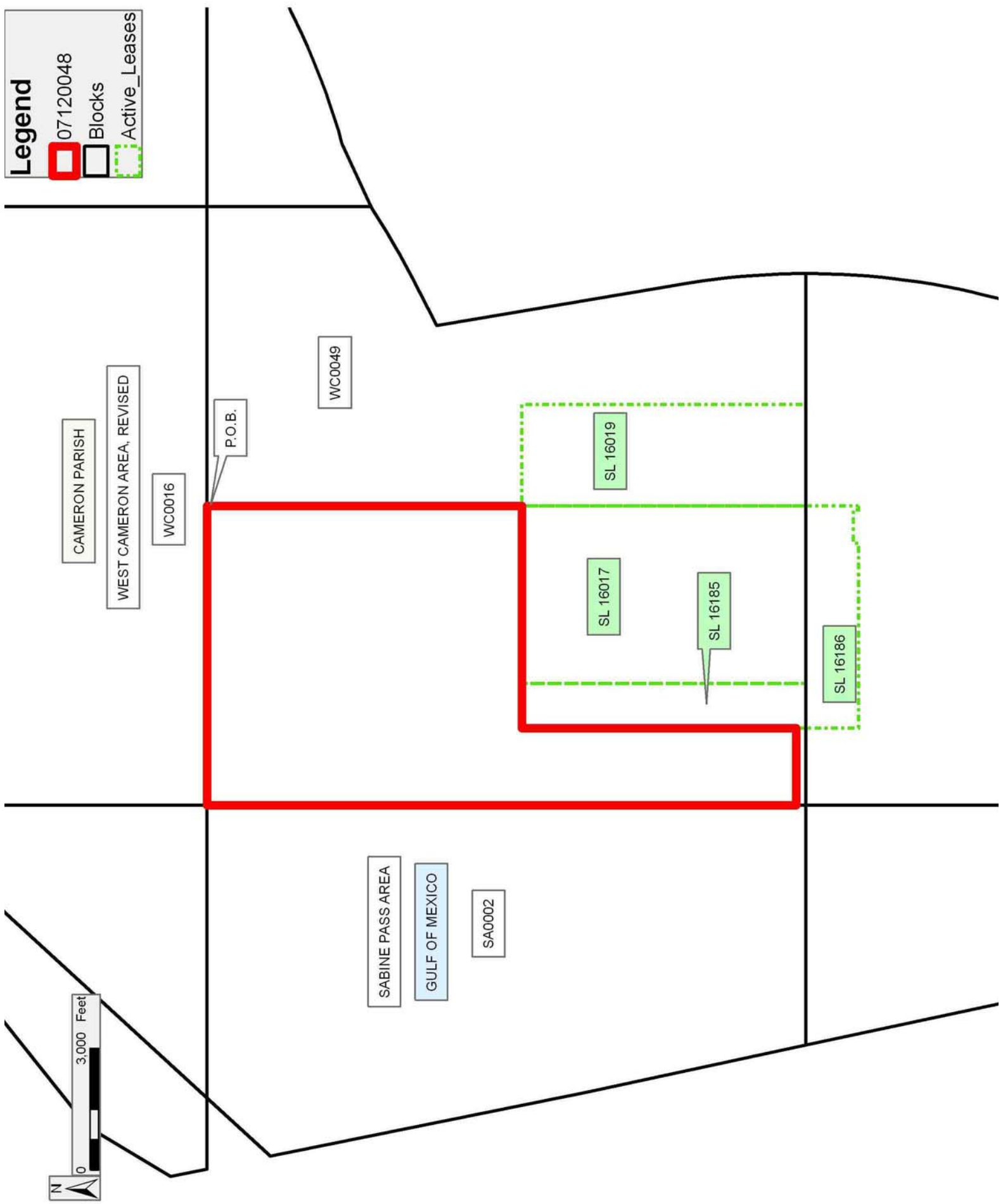
constructing, servicing and maintaining approved coastal zone management and/or restoration projects. Utilization of any and all rights derived under this lease by the mineral lessee, its agents, successors or assigns, shall not interfere with nor hinder the reasonable surface use by the Department of Natural Resources, its Offices or Commissions, as herein above reserved.

Applicant: SOUTH LOUISIANA MINERALS, INC.

Bidder	Cash Payment	Price/Acre	Rental	Oil	Gas	Other

Legend

-  07120048
-  Blocks
-  Active_Leases



TRACT 39503 - Portion of Block 49, West Cameron Area, Revised, Cameron Parish, Louisiana

The beds and bottoms of all water bodies belonging to the State of Louisiana located in Block 49, West Cameron Area, Revised, together with any present lands formed by accretion to the shoreline or islands formed therein, located in Cameron Parish, Louisiana, owned by and not presently under mineral lease as of December 12, 2007, from the State of Louisiana, the geographical area of which is more fully described as follows: Beginning at a point on the North line of Block 49, West Cameron Area, Revised, having Coordinates of X = 1,221,734.16 and Y = 379,032.19; thence East 7,379.02 feet along the North line of said Block 49 to its Northeast corner having Coordinates of X = 1,229,113.18 and Y = 379,032.19; thence South 4,035.61 feet along the East line of said Block 49 to a point on the Three Mile Line, as decreed by the Supreme Court of the United States, as determined by a Special Master appointed therein, in litigation styled *United States v. State of Louisiana et al No. 9 Original*, in 1975, having Coordinates of X = 1,229,113.18 and Y = 374,996.58; thence along said Three Mile Line the following courses: Southwesterly on a straight line to a point having Coordinates of X = 1,229,077 and Y = 374,980; Southwesterly along an arc to the right having a radius of 18,240.60 feet and a center at X = 1,219,065 and Y = 390,227 to a point having Coordinates of X = 1,227,371 and Y = 373,987; Southwesterly on a straight line to a point having Coordinates of X = 1,226,185 and Y = 373,381; Southeasterly on a straight line to a point having Coordinates of X = 1,227,214 and Y = 367,277 and Southeasterly along an arc to the right having a radius of 18,240.60 feet and a center at X = 1,209,227 and Y = 364,245 to a point on the South line of said Block 49 having Coordinates of X = 1,227,467.71 and Y = 364,274.14; thence West 3,233.55 feet along the South line of said Block 49 to the Southeast corner of State Lease No. 16019 having Coordinates of X = 1,224,234.16 and Y = 364,274.14; thence along the boundary of said State Lease No. 16019 the following courses: North 7,000.00 feet to its Northeast corner having Coordinates of X = 1,224,234.16 and Y = 371,274.14 and West 2,500.00 feet to its Northwest corner, also being the Northeast corner of State Lease No. 16017 having Coordinates of X = 1,221,734.16 and Y = 371,274.14; thence North 7,758.05 feet the point of beginning, containing approximately **1,588.77 acres, LESS AND EXCEPT** that portion thereof, if any, lying seaward of the line three nautical miles from the coast line of Louisiana, as said three mile line has been decreed by the Supreme Court of the United States, as determined by a Special Master appointed therein, in litigation styled **United States v. State of Louisiana et al No. 9 Original**, in 1975, all as more particularly outlined on a plat in the Office of Mineral Resources, Department of Natural Resources. All bearings, distances and coordinates are based on the Louisiana Coordinate System of 1927, (South Zone).

NOTE: The above description of the Tract nominated for lease has been provided and corrected, where required, exclusively by the nomination party. Any mineral lease selected from this Tract and awarded by the Louisiana State Mineral Board shall be without warranty of any kind,

either express, implied, or statutory, including, but not limited to, the implied warranties of merchantability and fitness for a particular purpose. Should the mineral lease awarded by the Louisiana State Mineral Board be subsequently modified, cancelled or abrogated due to the existence of conflicting leases, operating agreements, private claims or other future obligations or conditions which may affect all or any portion of the leased Tract, it shall not relieve the Lessee of the obligation to pay any bonus due thereon to the Louisiana State Mineral Board, nor shall the Louisiana State Mineral Board be obligated to refund any consideration paid by the Lessor prior to such modification, cancellation, or abrogation, including, but not limited to, bonuses, rentals and royalties.

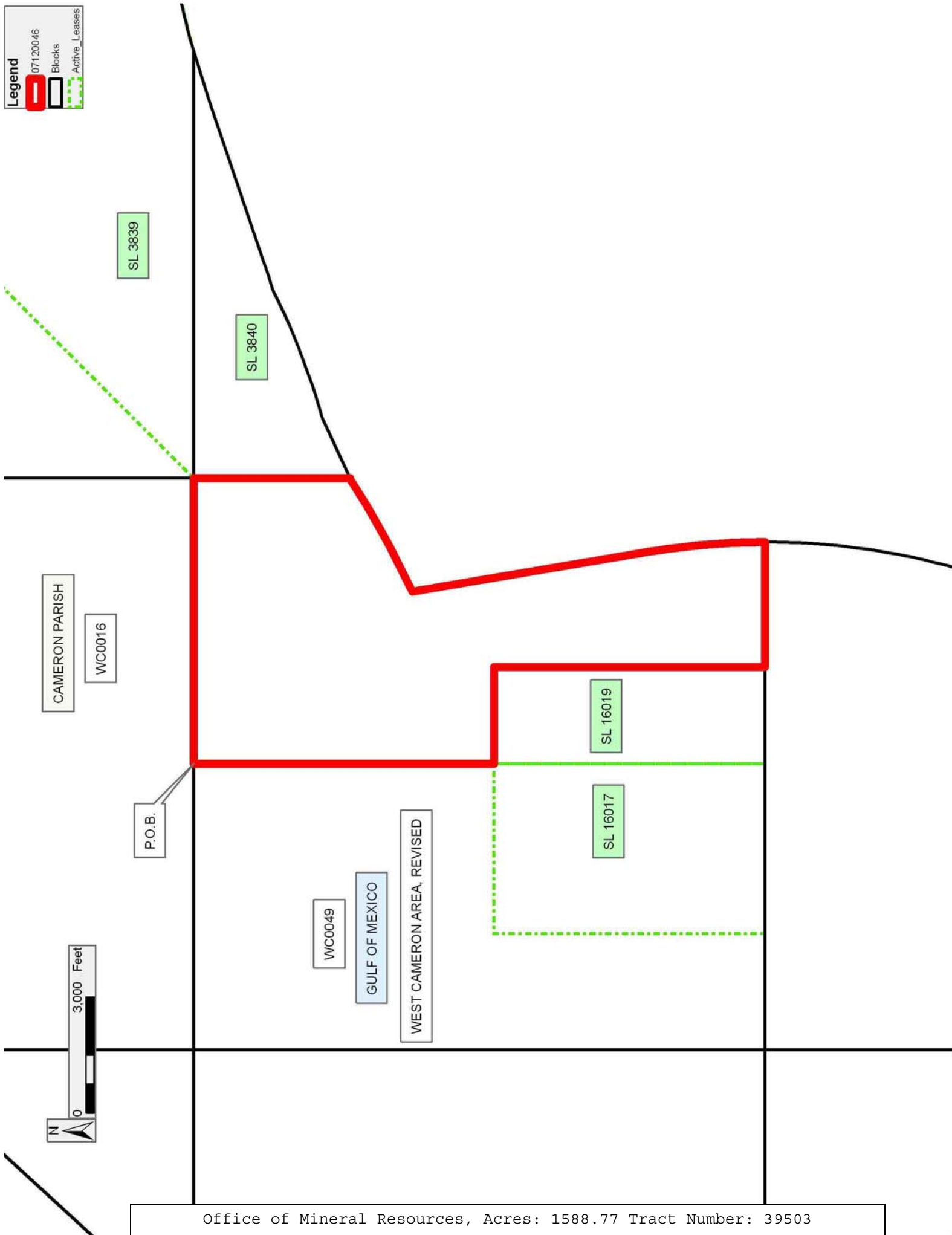
NOTE: The State of Louisiana does hereby reserve, and this lease shall be subject to, the imprescriptible right of surface use in the nature of a servitude in favor of the Department of Natural Resources, including its Offices and Commissions, for the sole purpose of implementing, constructing, servicing and maintaining approved coastal zone management and/or restoration projects. Utilization of any and all rights derived under this lease by the mineral lessee, its agents, successors or assigns, shall not interfere with nor hinder the reasonable surface use by the Department of Natural Resources, its Offices or Commissions, as herein above reserved.

Applicant: SOUTH LOUISIANA MINERALS, INC.

Bidder	Cash Payment	Price/Acre	Rental	Oil	Gas	Other

Legend

- 07120046
- Blocks
- Active_Leases



TRACT 39504 - Portion of Block 18, East Cameron Area, Revised, Cameron Parish, Louisiana

The beds and bottoms of all water bodies belonging to the State of Louisiana located in Block 18, East Cameron Area, Revised, together with any present lands formed by accretion to the shoreline or islands formed therein, located in Cameron Parish, Louisiana, owned by and not presently under mineral lease as of December 12, 2007, from the State of Louisiana, the geographical area of which is more fully described as follows: Beginning at the Northeast corner of said Block 18 and a point on the Louisiana Coastline, as decreed by the Supreme Court of the United States, as determined by a Special Master appointed therein, in litigation styled *United States v. State of Louisiana et al No. 9 Original*, in 1975, having Coordinates of X = 1,568,548.29 and Y = 341,657.57; thence South 3,513.47 feet along the East boundary of said Block 18 to a point having Coordinates of X = 1,568,548.29 and Y = 338,144.10; thence West 14,758.05 feet to a point on the West boundary of said Block 18 and a point on the East boundary of AO 148 having Coordinates of X = 1,553,790.24 and Y = 338,144.10; thence North 7,097.85 feet along the West boundary of said Block 18 and the East boundary of said AO 148 to its Northeast corner having Coordinates of X = 1,553,790.24 and Y = 345,241.95; thence continue North 1,931.44 feet along the West boundary of said Block 18 to its Northwest corner and a point on the Louisiana Coastline having Coordinates of X = 1,553,790.24 and Y = 347,173.39; thence Southeasterly on a straight line to a point having Coordinates of X = 1,558,840 and Y = 347,150; thence Southeasterly on a straight line to a point having Coordinates of X = 1,555,105 and Y = 346,865; thence Southeasterly on a straight line to a point having Coordinates of X = 1,558,720 and Y = 345,375; thence Southeasterly on a straight line to a point having Coordinates of X = 1,562,680 and Y = 344,195; thence Southeasterly on a straight line to a point having Coordinates of X = 1,564,160 and Y = 343,480; thence Southeasterly on a straight line to a point having Coordinates of X = 1,566,375 and Y = 342,810; thence Southeasterly on a straight line to a point having Coordinates of X = 1,566,890 and Y = 342,490; thence Southeasterly on a straight line to a point having Coordinates of X = 1,567,695 and Y = 341,990; thence Southeasterly on a straight line to the Northeast corner of said Block 18 and the point of beginning, containing approximately **2,182.11 acres**, all as more particularly outlined on a plat on file in the Office of Mineral Resources, Department of Natural Resources. All bearings, distances and coordinates are based on Louisiana Coordinate System of 1927, (North or South Zone).

NOTE: The above description of the Tract nominated for lease has been provided and corrected, where required, exclusively by the nomination party. Any mineral lease selected from this Tract and awarded by the Louisiana State Mineral Board shall be without warranty of any kind, either express, implied, or statutory, including, but not limited to, the implied warranties of merchantability and fitness for a particular purpose. Should the mineral lease awarded by the Louisiana State Mineral Board be subsequently modified, cancelled or abrogated due to the

existence of conflicting leases, operating agreements, private claims or other future obligations or conditions which may affect all or any portion of the leased Tract, it shall not relieve the Lessee of the obligation to pay any bonus due thereon to the Louisiana State Mineral Board, nor shall the Louisiana State Mineral Board be obligated to refund any consideration paid by the Lessor prior to such modification, cancellation, or abrogation, including, but not limited to, bonuses, rentals and royalties.

NOTE: The State of Louisiana does hereby reserve, and this lease shall be subject to, the imprescriptible right of surface use in the nature of a servitude in favor of the Department of Natural Resources, including its Offices and Commissions, for the sole purpose of implementing, constructing, servicing and maintaining approved coastal zone management and/or restoration projects. Utilization of any and all rights derived under this lease by the mineral lessee, its agents, successors or assigns, shall not interfere with nor hinder the reasonable surface use by the Department of Natural Resources, its Offices or Commissions, as herein above reserved.

Applicant: CYPRESS ENERGY CORPORATION

Bidder	Cash Payment	Price/Acre	Rental	Oil	Gas	Other

Legend

- 07120009
- Blocks
- Active_Leases



CAMERON PARISH



AO 0148

EC0017

EC0019

P.O.B.

GULF OF MEXICO

EC0018

EAST CAMERON AREA, REVISED

TRACT 39505 - Portion of Block 19, East Cameron Area, Revised, Cameron Parish, Louisiana

The beds and bottoms of all water bodies belonging to the State of Louisiana located in Block 19, East Cameron Area, Revised, together with any present lands formed by accretion to the shoreline or islands formed therein, located in Cameron Parish, Louisiana, owned by and not presently under mineral lease as of December 12, 2007, from the State of Louisiana, the geographical area of which is more fully described as follows: Beginning at a point on the North boundary of said Block 19 and a point on the Louisiana Coastline, as decreed by the Supreme Court of the United States, as determined by a Special Master appointed therein, in litigation styled *United States v. State of Louisiana et al No. 9 Original*, in 1975, having Coordinates of X = 1,578,748.29 and Y = 337,756.86; thence South 7,272.96 feet to a point on the South boundary of said Block 19 having Coordinates of X = 1,578,748.29 and Y = 330,483.90; thence West 10,200.00 feet along the South boundary of said Block 19 to its Southwest corner having Coordinates of X = 1,568,548.29 and Y = 330,483.90; thence North 11,173.67 feet along the West boundary of said Block 19 to its Northwest corner and a point on the Louisiana Coastline having Coordinates of X = 1,568,548.28 and Y = 341,657.57; thence Southeasterly on a straight line to a point having Coordinates of X = 1,570,480 and Y = 340,905; thence Southeasterly on a straight line to a point having Coordinates of X = 1,571,630 and Y = 340,335; thence Southeasterly on a straight line to a point having Coordinates of X = 1,576,170 and Y = 338,670; thence Southeasterly on a straight line to point of beginning, containing approximately **2,143.88 acres**, all as more particularly outlined on a plat on file in the Office of Mineral Resources, Department of Natural Resources. All bearings, distances and coordinates are based on Louisiana Coordinate System of 1927, (North or South Zone).

NOTE: The above description of the Tract nominated for lease has been provided and corrected, where required, exclusively by the nomination party. Any mineral lease selected from this Tract and awarded by the Louisiana State Mineral Board shall be without warranty of any kind, either express, implied, or statutory, including, but not limited to, the implied warranties of merchantability and fitness for a particular purpose. Should the mineral lease awarded by the Louisiana State Mineral Board be subsequently modified, cancelled or abrogated due to the existence of conflicting leases, operating agreements, private claims or other future obligations or conditions which may affect all or any portion of the leased Tract, it shall not relieve the Lessee of the obligation to pay any bonus due thereon to the Louisiana State Mineral Board, nor shall the Louisiana State Mineral Board be obligated to refund any consideration paid by the Lessor prior to such modification, cancellation, or abrogation, including, but not limited to, bonuses, rentals and royalties.

NOTE: The State of Louisiana does hereby reserve, and this lease shall be subject to, the imprescriptible right of surface use in the nature of a servitude in favor of the Department of Natural Resources, including its

Offices and Commissions, for the sole purpose of implementing, constructing, servicing and maintaining approved coastal zone management and/or restoration projects. Utilization of any and all rights derived under this lease by the mineral lessee, its agents, successors or assigns, shall not interfere with nor hinder the reasonable surface use by the Department of Natural Resources, its Offices or Commissions, as herein above reserved.

Applicant: CYPRESS ENERGY CORPORATION

Bidder	Cash Payment	Price/Acre	Rental	Oil	Gas	Other



CAMERON PARISH



GULF OF MEXICO

EC0018

EAST CAMERON AREA, REVISED

P.O.B.

EC0019

EC0021

TRACT 39506 - Portion of Block 18, East Cameron Area, Revised, Cameron Parish, Louisiana

The beds and bottoms of all water bodies belonging to the State of Louisiana located in Block 18, East Cameron Area, Revised, together with any present lands formed by accretion to the shoreline or islands formed therein, located in Cameron Parish, Louisiana, owned by and not presently under mineral lease as of December 12, 2007, from the State of Louisiana, the geographical area of which is more fully described as follows: Beginning at a point on the East boundary of said Block 18 having Coordinates of X = 1,568,548.29 and Y = 338,144.10; thence South 6,686.25 feet along the East boundary of said Block 18 to a point having Coordinates of X = 1,568,548.29 and Y = 331,457.85; thence West 14,758.05 feet to a point on the West boundary of said Block 18 having Coordinates of X = 1,553,790.24 and Y = 331,457.85; thence North 3,526.05 feet along the West boundary of said Block 18 to the Southeast corner of AO 148 having Coordinates of X = 1,553,790.24 and Y = 334,983.90; thence continue North 3,160.20 feet along the West boundary of said Block 18 and the East boundary of said AO 148 to a point having Coordinates of X = 1,553,790.24 and Y = 338,144.10; thence East 14,758.05 feet to the point of beginning, containing approximately **2,265.29 acres**, all as more particularly outlined on a plat on file in the Office of Mineral Resources, Department of Natural Resources. All bearings, distances and coordinates are based on Louisiana Coordinate System of 1927, (North or South Zone).

NOTE: The above description of the Tract nominated for lease has been provided and corrected, where required, exclusively by the nomination party. Any mineral lease selected from this Tract and awarded by the Louisiana State Mineral Board shall be without warranty of any kind, either express, implied, or statutory, including, but not limited to, the implied warranties of merchantability and fitness for a particular purpose. Should the mineral lease awarded by the Louisiana State Mineral Board be subsequently modified, cancelled or abrogated due to the existence of conflicting leases, operating agreements, private claims or other future obligations or conditions which may affect all or any portion of the leased Tract, it shall not relieve the Lessee of the obligation to pay any bonus due thereon to the Louisiana State Mineral Board, nor shall the Louisiana State Mineral Board be obligated to refund any consideration paid by the Lessor prior to such modification, cancellation, or abrogation, including, but not limited to, bonuses, rentals and royalties.

NOTE: The State of Louisiana does hereby reserve, and this lease shall be subject to, the imprescriptible right of surface use in the nature of a servitude in favor of the Department of Natural Resources, including its Offices and Commissions, for the sole purpose of implementing, constructing, servicing and maintaining approved coastal zone management and/or restoration projects. Utilization of any and all rights derived under this lease by the mineral lessee, its agents, successors or assigns, shall not interfere with nor hinder the reasonable surface use by the

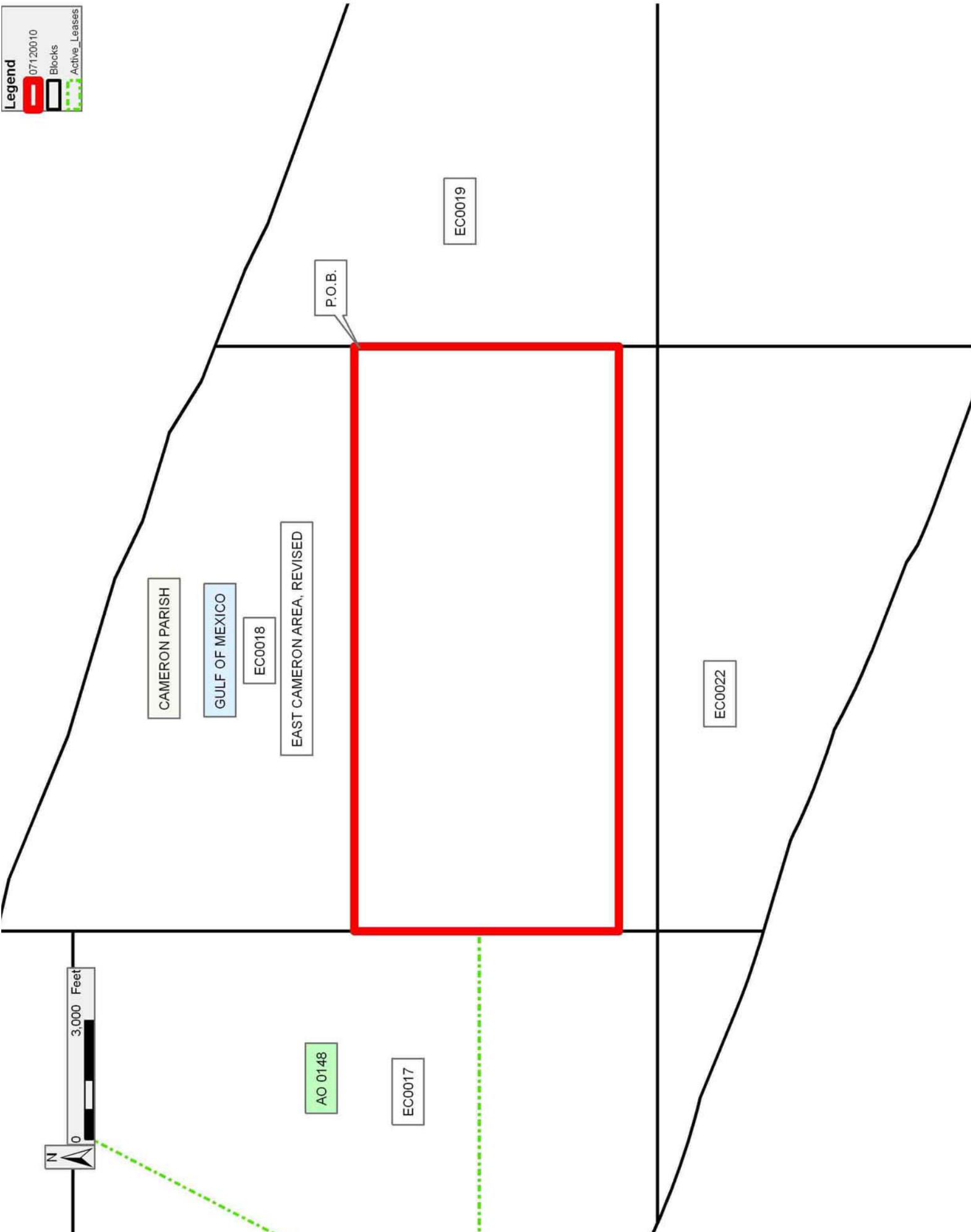
Department of Natural Resources, its Offices or Commissions, as herein above reserved.

Applicant: CYPRESS ENERGY CORPORATION

Bidder	Cash Payment	Price/Acre	Rental	Oil	Gas	Other

Legend

- 07120010
- Blocks
- Active_Leases



TRACT 39507 - Portion of Blocks 19, 20, and 21, East Cameron Area, Revised, Cameron Parish, Louisiana

The beds and bottoms of all water bodies belonging to the State of Louisiana located in Blocks 19, 20, and 21, East Cameron Area, Revised, together with any present lands formed by accretion to the shoreline or islands formed therein, located in Cameron Parish, Louisiana, owned by and not presently under mineral lease as of December 12, 2007, from the State of Louisiana, the geographical area of which is more fully described as follows: Beginning at the Northeast corner of said Block 20 and a point on the Louisiana Coastline, as decreed by the Supreme Court of the United States, as determined by a Special Master appointed therein, in litigation styled *United States v. State of Louisiana et al No. 9 Original*, in 1975, having Coordinates of X = 1,591,323.18 and Y = 333,905.34; thence South 00 degrees 38 minutes 35 seconds West 4,948.80 feet along the East boundary of said Block 20 to a point having Coordinates of X = 1,591,267.64 and Y = 328,956.86; thence West 12,519.35 feet to a point in said Block 21 having Coordinates of X = 1,578,748.29 and Y = 328,956.86; thence North 8,800.00 feet to a point on the North boundary of said Block 19 and a point on the Louisiana Coastline having Coordinates of X = 1,578,748.29 and Y = 337,756.86; thence Southeasterly on a straight line to a point having Coordinates of X = 1,581,450 and Y = 336,800; thence Southeasterly on a straight line to a point having Coordinates of X = 1,586,780 and Y = 335,220; thence Southeasterly on a straight line to a point having Coordinates of X = 1,589,460 and Y = 334,525; thence Southeasterly on a straight line to the point of beginning, containing approximately **1,964.86 acres**, all as more particularly outlined on a plat on file in the Office of Mineral Resources, Department of Natural Resources. All bearings, distances and coordinates are based on Louisiana Coordinate System of 1927, (North or South Zone).

NOTE: The above description of the Tract nominated for lease has been provided and corrected, where required, exclusively by the nomination party. Any mineral lease selected from this Tract and awarded by the Louisiana State Mineral Board shall be without warranty of any kind, either express, implied, or statutory, including, but not limited to, the implied warranties of merchantability and fitness for a particular purpose. Should the mineral lease awarded by the Louisiana State Mineral Board be subsequently modified, cancelled or abrogated due to the existence of conflicting leases, operating agreements, private claims or other future obligations or conditions which may affect all or any portion of the leased Tract, it shall not relieve the Lessee of the obligation to pay any bonus due thereon to the Louisiana State Mineral Board, nor shall the Louisiana State Mineral Board be obligated to refund any consideration paid by the Lessor prior to such modification, cancellation, or abrogation, including, but not limited to, bonuses, rentals and royalties.

NOTE: The State of Louisiana does hereby reserve, and this lease shall be subject to, the imprescriptible right of surface use in the nature of a servitude in favor of the Department of Natural Resources, including its

Offices and Commissions, for the sole purpose of implementing, constructing, servicing and maintaining approved coastal zone management and/or restoration projects. Utilization of any and all rights derived under this lease by the mineral lessee, its agents, successors or assigns, shall not interfere with nor hinder the reasonable surface use by the Department of Natural Resources, its Offices or Commissions, as herein above reserved.

Applicant: CYPRESS ENERGY CORPORATION

Bidder	Cash Payment	Price/Acre	Rental	Oil	Gas	Other



VERMILION PARISH

VR0001

VERMILION AREA, REVISED

CAMERON PARISH

P.O.B.



EC0019

GULF OF MEXICO

EAST CAMERON AREA, REVISED

EC0021

TRACT 39508 - Portion of Blocks 18, and 22, East Cameron Area, Revised, Cameron Parish, Louisiana

The beds and bottoms of all water bodies belonging to the State of Louisiana located in Blocks 18, and 22, East Cameron Area, Revised, together with any present lands formed by accretion to the shoreline or islands formed therein, located in Cameron Parish, Louisiana, owned by and not presently under mineral lease as of December 12, 2007, from the State of Louisiana, the geographical area of which is more fully described as follows: Beginning at a point on the East boundary of said Block 18 having Coordinates of X = 1,568,548.29 and Y = 331,457.85; thence South 9,421.16 feet along the East Line of said Block 18 into said Block 22 to a point on the Three Mile Line, as decreed by the Supreme Court of the United States, as determined by a Special Master appointed therein, in litigation styled *United States v. State of Louisiana et al No. 9 Original*, in 1975, having Coordinates of X = 1,568,548.29 and Y = 322,036.69; thence Northwesterly on a straight line to a point having Coordinates of X = 1,565,349 and Y = 323,210; thence Northwesterly on an arc having a radius of 18,240.60 feet and a center at X = 1,571,630 and Y = 340,335 to a point having Coordinates of X = 1,563,529 and Y = 323,992; thence Northwesterly on a straight line to a point having Coordinates of X = 1,563,104 and Y = 324,202; thence Northwesterly on a straight line to a point having Coordinates of X = 1,561,073 and Y = 324,994; thence Northwesterly on an arc having a radius of 18,240.60 feet and a center at X = 1,567,695 and Y = 341,990 to a point having Coordinates of X = 1,558,882 and Y = 326,020; thence Northwesterly on a straight line to a point having Coordinates of X = 1,558,879 and Y = 326,021; thence Northwesterly on an arc having a radius of 18,240.60 feet and a center at X = 1,564,160 and Y = 343,480 to a point having Coordinates of X = 1,556,225 and Y = 327,056; thence Northwesterly on a straight line to a point having Coordinates of X = 1,556,066 and Y = 327,133; thence Northwesterly on a straight line to a point on the West boundary of said Block 22 and the Southeast corner of State Lease No. 13037 having Coordinates of X = 1,553,790.24 and Y = 327,810.83; thence North 2,673.07 feet along the West boundary of said Block 22 to its Northwest corner and the Southwest corner of said Block 18 and the East boundary of said State Lease No. 13037 to its Northeast corner having Coordinates of X = 1,553,790.24 and Y = 330,483.90; thence continue North 973.95 feet along the West boundary of said Block 18 to a point having Coordinates of X = 1,553,790.24 and Y = 331,457.85; thence East 14,758.05 feet to the point of beginning, containing approximately **2,197.10 acres, LESS AND EXCEPT** that portion thereof, if any, lying seaward of the line three nautical miles from the coast line of Louisiana, as said three mile line has been decreed by the Supreme Court of the United States, as determined by a Special Master appointed therein, in litigation styled **United States v. State of Louisiana et al No. 9 Original**, in 1975, all as more particularly outlined on a plat in the Office of Mineral Resources, Department of Natural Resources. All bearings, distances and coordinates are based on the Louisiana Coordinate System of 1927, (South Zone).

NOTE: The above description of the Tract nominated for lease has been provided and corrected, where required, exclusively by the nomination party. Any mineral lease selected from this Tract and awarded by the Louisiana State Mineral Board shall be without warranty of any kind, either express, implied, or statutory, including, but not limited to, the implied warranties of merchantability and fitness for a particular purpose. Should the mineral lease awarded by the Louisiana State Mineral Board be subsequently modified, cancelled or abrogated due to the existence of conflicting leases, operating agreements, private claims or other future obligations or conditions which may affect all or any portion of the leased Tract, it shall not relieve the Lessee of the obligation to pay any bonus due thereon to the Louisiana State Mineral Board, nor shall the Louisiana State Mineral Board be obligated to refund any consideration paid by the Lessor prior to such modification, cancellation, or abrogation, including, but not limited to, bonuses, rentals and royalties.

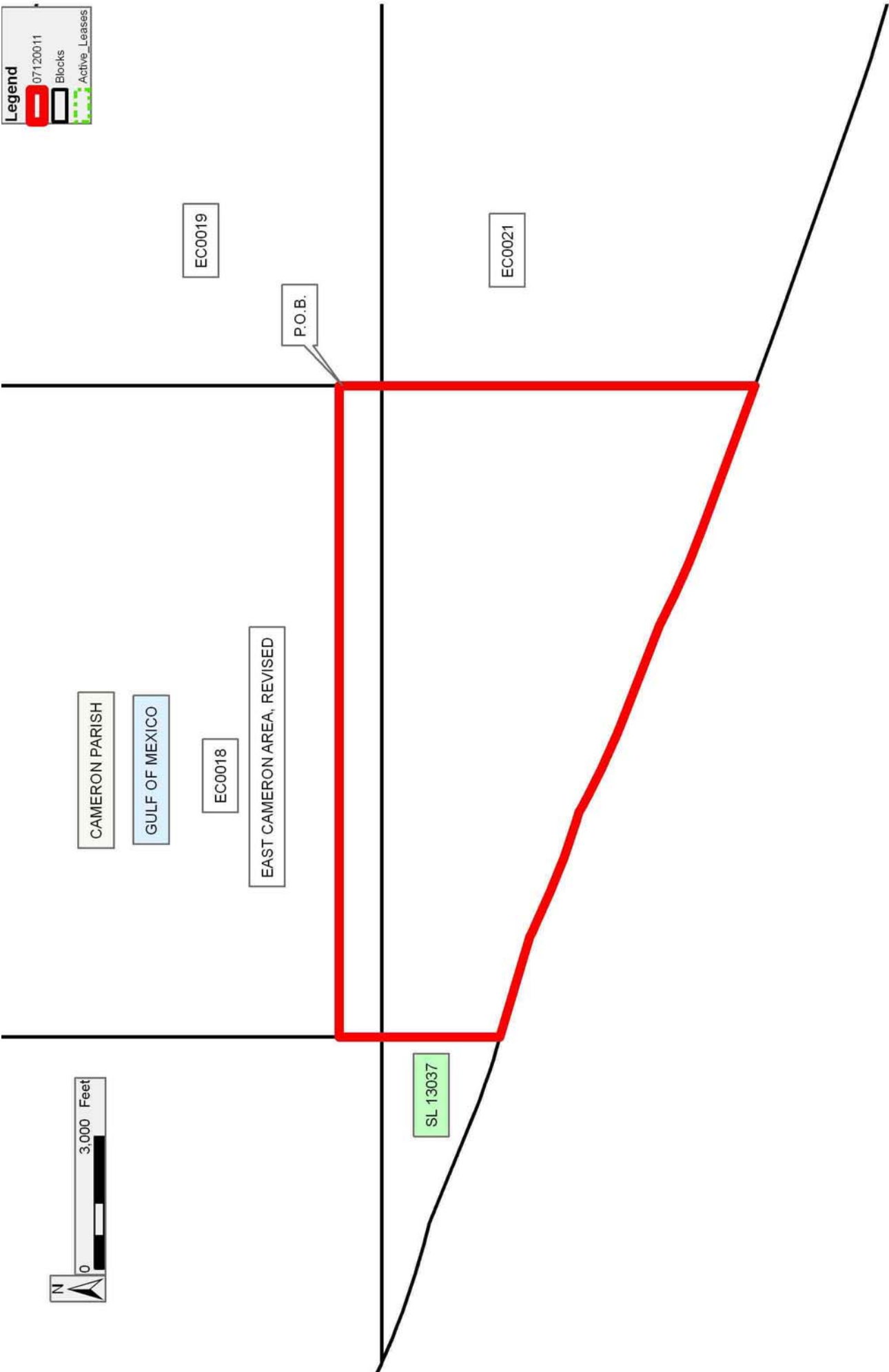
NOTE: The State of Louisiana does hereby reserve, and this lease shall be subject to, the imprescriptible right of surface use in the nature of a servitude in favor of the Department of Natural Resources, including its Offices and Commissions, for the sole purpose of implementing, constructing, servicing and maintaining approved coastal zone management and/or restoration projects. Utilization of any and all rights derived under this lease by the mineral lessee, its agents, successors or assigns, shall not interfere with nor hinder the reasonable surface use by the Department of Natural Resources, its Offices or Commissions, as herein above reserved.

Applicant: CYPRESS ENERGY CORPORATION

Bidder	Cash Payment	Price/Acre	Rental	Oil	Gas	Other

Legend

- 07120011
- Blocks
- Active_Leases



TRACT 39509 - Portion of Block 21, East Cameron Area, Revised, Cameron Parish, Louisiana

The beds and bottoms of all water bodies belonging to the State of Louisiana located in Block 21, East Cameron Area, Revised, together with any present lands formed by accretion to the shoreline or islands formed therein, located in Cameron Parish, Louisiana, owned by and not presently under mineral lease as of December 12, 2007, from the State of Louisiana, the geographical area of which is more fully described as follows: Beginning at a point on the North boundary of said Block 21 having Coordinates of X = 1,578,748.29 and Y = 330,483.90; thence South 11,907.74 feet to a point on the Three Mile Line, as decreed by the Supreme Court of the United States, as determined by a Special Master appointed therein, in litigation styled *United States v. State of Louisiana et al No. 9 Original*, in 1975, having Coordinates of X = 1,578,748.29 and Y = 318,576.16; thence Northwesterly on a straight line to a point having Coordinates of X = 1,576,266 and Y = 319,312; thence Northwesterly on an arc having a radius of 18,240.60 feet and a center at X = 1,581,450 and Y = 336,800 to a point having Coordinates of X = 1,575,360 and Y = 319,606; thence Northwesterly on a straight line to a point having Coordinates of X = 1,570,080 and Y = 321,476; thence Northwesterly on an arc having a radius of 18,240.60 feet and a center at X = 1,576,170 and Y = 338,670 to a point having Coordinates of X = 1,569,889 and Y = 321,545; thence Northwesterly on a straight line to a point on the West boundary of said Block 21 having Coordinates of X = 1,568,548.29 and Y = 322,036.69; thence North 8,447.21 feet along the West boundary of said Block 21 to its Northwest corner having Coordinates of X = 1,568,548.29 and Y = 330,483.90; thence East 10,200.00 feet to the point of beginning, containing approximately **2,399.11 acres, LESS AND EXCEPT** that portion thereof, if any, lying seaward of the line three nautical miles from the coast line of Louisiana, as said three mile line has been decreed by the Supreme Court of the United States, as determined by a Special Master appointed therein, in litigation styled **United States v. State of Louisiana et al No. 9 Original**, in 1975, all as more particularly outlined on a plat in the Office of Mineral Resources, Department of Natural Resources. All bearings, distances and coordinates are based on the Louisiana Coordinate System of 1927, (South Zone).

NOTE: The above description of the Tract nominated for lease has been provided and corrected, where required, exclusively by the nomination party. Any mineral lease selected from this Tract and awarded by the Louisiana State Mineral Board shall be without warranty of any kind, either express, implied, or statutory, including, but not limited to, the implied warranties of merchantability and fitness for a particular purpose. Should the mineral lease awarded by the Louisiana State Mineral Board be subsequently modified, cancelled or abrogated due to the existence of conflicting leases, operating agreements, private claims or other future obligations or conditions which may affect all or any portion of the leased Tract, it shall not relieve the Lessee of the obligation to pay any bonus due thereon to the Louisiana State Mineral Board, nor shall

the Louisiana State Mineral Board be obligated to refund any consideration paid by the Lessor prior to such modification, cancellation, or abrogation, including, but not limited to, bonuses, rentals and royalties.

NOTE: The State of Louisiana does hereby reserve, and this lease shall be subject to, the imprescriptible right of surface use in the nature of a servitude in favor of the Department of Natural Resources, including its Offices and Commissions, for the sole purpose of implementing, constructing, servicing and maintaining approved coastal zone management and/or restoration projects. Utilization of any and all rights derived under this lease by the mineral lessee, its agents, successors or assigns, shall not interfere with nor hinder the reasonable surface use by the Department of Natural Resources, its Offices or Commissions, as herein above reserved.

Applicant: CYPRESS ENERGY CORPORATION

Bidder	Cash Payment	Price/Acre	Rental	Oil	Gas	Other

Legend
07120013
Blocks

