

TRACT 39490 - Portion of Block 14, West Cameron Area, Revised, Cameron Parish, Louisiana

The beds and bottoms of all water bodies belonging to the State of Louisiana located in Block 14, West Cameron Area, Revised, together with any present lands formed by accretion to the shoreline or islands formed therein, located in Cameron Parish, Louisiana, owned by and not presently under mineral lease as of December 12, 2007, from the State of Louisiana, the geographical area of which is more fully described as follows: Beginning at the Southeast corner of Block 14, West Cameron Area, Revised, having Coordinates of X = 1,243,871.23 and Y = 393,790.24; thence West 14,758.05 feet along the South line of said Block 14 to its Southwest corner having Coordinates of X = 1,229,113.18 and Y = 393,790.24; thence North 797.15 feet along the West line of said Block 14 to a point on the Louisiana Coastline, as decreed by the Supreme Court of the United States, as determined by a Special Master appointed therein, in litigation styled *United States v. State of Louisiana et al No. 9 Original*, in 1975, having Coordinates of X = 1,229,113.18 and Y = 394,587.39; thence along said Louisiana Coastline the following: Northeasterly on a straight line to a point having Coordinates of X = 1,233,256 and Y = 395,989; Northeasterly on a straight line to a point having Coordinates of X = 1,235,668 and Y = 396,741; Northeasterly on a straight line to a point having Coordinates of X = 1,240,260 and Y = 397,840 and Northeasterly on a straight line to a point having Coordinates of X = 1,241,182.85 and Y = 397,991.55; thence South 39 degrees 34 minutes 36 seconds East 1,394.85 feet to a point having Coordinates of X = 1,242,071.52 and Y = 396,916.44; thence South 2,004.23 feet to a point having Coordinates of X = 1,242,071.52 and Y = 394,912.21; thence East 1,799.71 feet to a point on the East line of said Block 14 having Coordinates of X = 1,243,871.23 and Y = 394,912.21; thence South 1,121.97 feet along the East line of said Block 14 to the point of beginning, containing approximately **862.53 acres**, all as more particularly outlined on a plat on file in the Office of Mineral Resources, Department of Natural Resources. All bearings, distances and coordinates are based on Louisiana Coordinate System of 1927, (North or South Zone).

NOTE: The above description of the Tract nominated for lease has been provided and corrected, where required, exclusively by the nomination party. Any mineral lease selected from this Tract and awarded by the Louisiana State Mineral Board shall be without warranty of any kind, either express, implied, or statutory, including, but not limited to, the implied warranties of merchantability and fitness for a particular purpose. Should the mineral lease awarded by the Louisiana State Mineral Board be subsequently modified, cancelled or abrogated due to the existence of conflicting leases, operating agreements, private claims or other future obligations or conditions which may affect all or any portion of the leased Tract, it shall not relieve the Lessee of the obligation to pay any bonus due thereon to the Louisiana State Mineral Board, nor shall the Louisiana State Mineral Board be obligated to refund any consideration paid by the Lessor prior to such modification, cancellation, or abrogation, including, but not limited to, bonuses, rentals and royalties.

NOTE: The State of Louisiana does hereby reserve, and this lease shall be subject to, the imprescriptible right of surface use in the nature of a servitude in favor of the Department of Natural Resources, including its Offices and Commissions, for the sole purpose of implementing, constructing, servicing and maintaining approved coastal zone management and/or restoration projects. Utilization of any and all rights derived under this lease by the mineral lessee, its agents, successors or assigns, shall not interfere with nor hinder the reasonable surface use by the Department of Natural Resources, its Offices or Commissions, as herein above reserved.

Applicant: SOUTH LOUISIANA MINERALS, INC.

Bidder	Cash Payment	Price/Acre	Rental	Oil	Gas	Other

Legend

07120039

Blocks

Active_Leases

DOQQ2004



0 2,000 Feet



SL 18690

P.O.B.

SL 3839

CAMERON PARISH

GULF OF MEXICO

WEST CAMERON AREA, REVISED

WC0017

TRACT 39491 - Portion of Block 16, West Cameron Area, Revised, Cameron Parish, Louisiana

The beds and bottoms of all water bodies belonging to the State of Louisiana located in Block 16, West Cameron Area, Revised, together with any present lands formed by accretion to the shoreline or islands formed therein, located in Cameron Parish, Louisiana, owned by and not presently under mineral lease as of December 12, 2007, from the State of Louisiana, the geographical area of which is more fully described as follows: Beginning at a point on the East line of Block 16, West Cameron Area, Revised, having Coordinates of X = 1,229,113.18 and Y = 386,411.22; thence West 7,379.02 feet to a point having Coordinates of X = 1,221,734.16 and Y = 386,411.22; thence North 5,268.37 feet to a point on the Louisiana Coastline, as decreed by the Supreme Court of the United States, as determined by a Special Master appointed therein, in litigation styled *United States v. State of Louisiana et al No. 9 Original*, in 1975, having Coordinates of X = 1,221,734.16 and Y = 391,679.58; thence along said Louisiana Coastline the following: Northeasterly on a straight line to a point having Coordinates of X = 1,225,421 and Y = 393,370; Southeasterly on a straight line to a point having Coordinates of X = 1,225,768 and Y = 393,281; Northeasterly on a straight line to a point having Coordinates of X = 1,226,444 and Y = 393,922; Northeasterly on a straight line to a point having Coordinates of X = 1,228,772 and Y = 394,775; Southeasterly on a straight line to a point having Coordinates of X = 1,228,846 and Y = 394,497 and Northeasterly on a straight line to the Northeast corner of said Block 16 having Coordinates of X = 1,229,113.18 and Y = 394,587.39; thence South 8,176.18 feet along the East line of said Block 16 to the point of beginning, containing approximately **1,172.15 acres**, all as more particularly outlined on a plat on file in the Office of Mineral Resources, Department of Natural Resources. All bearings, distances and coordinates are based on Louisiana Coordinate System of 1927, (North or South Zone).

NOTE: The above description of the Tract nominated for lease has been provided and corrected, where required, exclusively by the nomination party. Any mineral lease selected from this Tract and awarded by the Louisiana State Mineral Board shall be without warranty of any kind, either express, implied, or statutory, including, but not limited to, the implied warranties of merchantability and fitness for a particular purpose. Should the mineral lease awarded by the Louisiana State Mineral Board be subsequently modified, cancelled or abrogated due to the existence of conflicting leases, operating agreements, private claims or other future obligations or conditions which may affect all or any portion of the leased Tract, it shall not relieve the Lessee of the obligation to pay any bonus due thereon to the Louisiana State Mineral Board, nor shall the Louisiana State Mineral Board be obligated to refund any consideration paid by the Lessor prior to such modification, cancellation, or abrogation, including, but not limited to, bonuses, rentals and royalties.

NOTE: The State of Louisiana does hereby reserve, and this lease shall be subject to, the imprescriptible right of surface use in the nature of a servitude in favor of the Department of Natural Resources, including its Offices and Commissions, for the sole purpose of implementing, constructing, servicing and maintaining approved coastal zone management and/or restoration projects. Utilization of any and all rights derived under this lease by the mineral lessee, its agents, successors or assigns, shall not interfere with nor hinder the reasonable surface use by the Department of Natural Resources, its Offices or Commissions, as herein above reserved.

Applicant: SOUTH LOUISIANA MINERALS, INC.

Bidder	Cash Payment	Price/Acre	Rental	Oil	Gas	Other

Legend

07120041

Blocks

CAMERON PARISH

WC0017

WEST CAMERON AREA, REVISED

P.O.B.

GULF OF MEXICO

WC0016



TRACT 39492 - Portion of Block 17, West Cameron Area, Revised, Cameron Parish, Louisiana

The beds and bottoms of all water bodies belonging to the State of Louisiana located in Block 17, West Cameron Area, Revised, together with any present lands formed by accretion to the shoreline or islands formed therein, located in Cameron Parish, Louisiana, owned by and not presently under mineral lease as of December 12, 2007, from the State of Louisiana, the geographical area of which is more fully described as follows: Beginning at a point on the Western boundary of State Lease No. 3839 having Coordinates of X = 1,236,492.21 and Y = 386,411.22; thence West 7,379.03 feet to a point on the West line of Block 17, West Cameron Area, Revised, having Coordinates of X = 1,229,113.18 and Y = 386,411.22; thence North 7,379.03 feet along the West line of said Block 17 to its Northwest corner having Coordinates of X = 1,229,113.18 and Y = 393,790.24; thence East 7,379.03 feet along the North line of said Block 17 to a point having Coordinates of X = 1,236,492.21 and Y = 393,790.24; thence South 7,379.03 feet to the point of beginning, containing approximately **1,250.00 acres**, all as more particularly outlined on a plat on file in the Office of Mineral Resources, Department of Natural Resources. All bearings, distances and coordinates are based on Louisiana Coordinate System of 1927, (North or South Zone).

NOTE: The above description of the Tract nominated for lease has been provided and corrected, where required, exclusively by the nomination party. Any mineral lease selected from this Tract and awarded by the Louisiana State Mineral Board shall be without warranty of any kind, either express, implied, or statutory, including, but not limited to, the implied warranties of merchantability and fitness for a particular purpose. Should the mineral lease awarded by the Louisiana State Mineral Board be subsequently modified, cancelled or abrogated due to the existence of conflicting leases, operating agreements, private claims or other future obligations or conditions which may affect all or any portion of the leased Tract, it shall not relieve the Lessee of the obligation to pay any bonus due thereon to the Louisiana State Mineral Board, nor shall the Louisiana State Mineral Board be obligated to refund any consideration paid by the Lessor prior to such modification, cancellation, or abrogation, including, but not limited to, bonuses, rentals and royalties.

NOTE: The State of Louisiana does hereby reserve, and this lease shall be subject to, the imprescriptible right of surface use in the nature of a servitude in favor of the Department of Natural Resources, including its Offices and Commissions, for the sole purpose of implementing, constructing, servicing and maintaining approved coastal zone management and/or restoration projects. Utilization of any and all rights derived under this lease by the mineral lessee, its agents, successors or assigns, shall not interfere with nor hinder the reasonable surface use by the Department of Natural Resources, its Offices or Commissions, as herein above reserved.

Applicant: SOUTH LOUISIANA MINERALS, INC.

Bidder	Cash Payment	Price/Acre	Rental	Oil	Gas	Other

Legend

- 07120040
- Blocks
- Active_Leases



CAMERON PARISH

WC0014

GULF OF MEXICO

WC0017

SL 3839

P.O.B.

WEST CAMERON AREA, REVISED

WC0016

TRACT 39493 - Portion of Block 17, West Cameron Area, Revised, Cameron Parish, Louisiana

The beds and bottoms of all water bodies belonging to the State of Louisiana located in Block 17, West Cameron Area, Revised, together with any present lands formed by accretion to the shoreline or islands formed therein, located in Cameron Parish, Louisiana, owned by and not presently under mineral lease as of December 12, 2007, from the State of Louisiana, the geographical area of which is more fully described as follows: Beginning at a point on the Western boundary of State Lease No. 3839 having Coordinates of X = 1,236,492.21 and Y = 386,411.22; thence North 7,379.02 feet to a point on the North line of Block 17, West Cameron Area, Revised, having Coordinates of X = 1,236,492.21 and Y = 393,790.24; thence East 7,379.02 feet along the North line of said Block 17 to its Northeast corner, also being the Northernmost corner of said State Lease No. 3839 having Coordinates of X = 1,243,871.23 and Y = 393,790.24; thence South 45 degrees 00 minutes 00 seconds West 10,435.52 feet along the Western boundary of said State Lease No. 3839 to the point of beginning, containing approximately **625.00 acres**, all as more particularly outlined on a plat on file in the Office of Mineral Resources, Department of Natural Resources. All bearings, distances and coordinates are based on Louisiana Coordinate System of 1927, (North or South Zone).

NOTE: The above description of the Tract nominated for lease has been provided and corrected, where required, exclusively by the nomination party. Any mineral lease selected from this Tract and awarded by the Louisiana State Mineral Board shall be without warranty of any kind, either express, implied, or statutory, including, but not limited to, the implied warranties of merchantability and fitness for a particular purpose. Should the mineral lease awarded by the Louisiana State Mineral Board be subsequently modified, cancelled or abrogated due to the existence of conflicting leases, operating agreements, private claims or other future obligations or conditions which may affect all or any portion of the leased Tract, it shall not relieve the Lessee of the obligation to pay any bonus due thereon to the Louisiana State Mineral Board, nor shall the Louisiana State Mineral Board be obligated to refund any consideration paid by the Lessor prior to such modification, cancellation, or abrogation, including, but not limited to, bonuses, rentals and royalties.

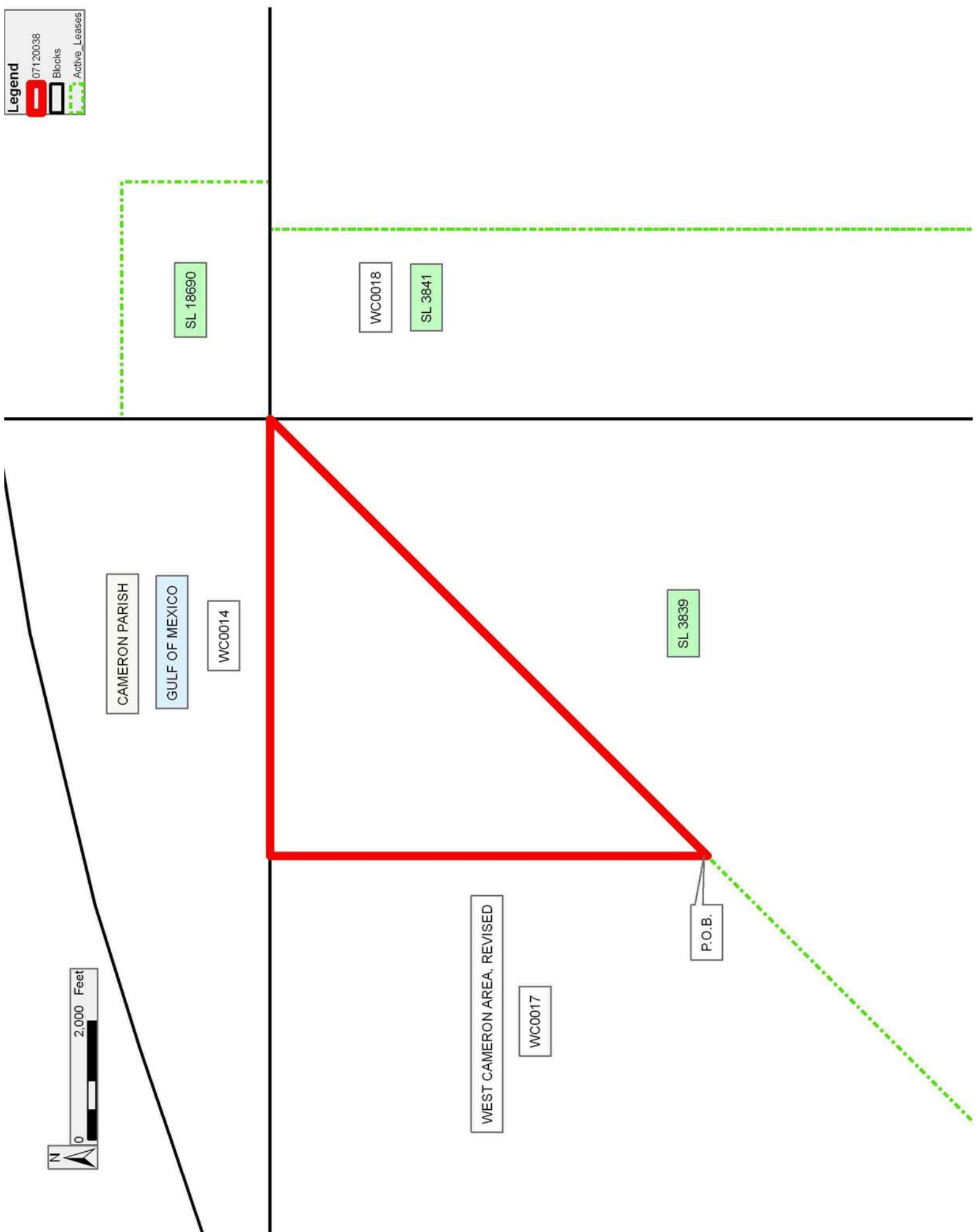
NOTE: The State of Louisiana does hereby reserve, and this lease shall be subject to, the imprescriptible right of surface use in the nature of a servitude in favor of the Department of Natural Resources, including its Offices and Commissions, for the sole purpose of implementing, constructing, servicing and maintaining approved coastal zone management and/or restoration projects. Utilization of any and all rights derived under this lease by the mineral lessee, its agents, successors or assigns, shall not interfere with nor hinder the reasonable surface use by the Department of Natural Resources, its Offices or Commissions, as herein above reserved.

Applicant: SOUTH LOUISIANA MINERALS, INC.

Bidder	Cash Payment	Price/Acre	Rental	Oil	Gas	Other

Legend

- 07120038
- Blocks
- Active_Leases



TRACT 39494 - Portion of Block 16, West Cameron Area, Revised, Cameron Parish, Louisiana

The beds and bottoms of all water bodies belonging to the State of Louisiana located in Block 16, West Cameron Area, Revised, together with any present lands formed by accretion to the shoreline or islands formed therein, located in Cameron Parish, Louisiana, owned by and not presently under mineral lease as of December 12, 2007, from the State of Louisiana, the geographical area of which is more fully described as follows: Beginning at a point within Block 16, West Cameron Area, Revised, having Coordinates of X = 1,218,044.65 and Y = 386,411.22; thence North 3,293.93 feet to a point on the Louisiana Coastline, as decreed by the Supreme Court of the United States, as determined by a Special Master appointed therein, in litigation styled *United States v. State of Louisiana et al No. 9 Original*, in 1975, having Coordinates of X = 1,218,044.65 and Y = 389,705.15; thence along said Louisiana Coastline the following: Northeasterly on a straight line to a point having Coordinates of X = 1,219,065 and Y = 390,227; Northeasterly on a straight line to a point having Coordinates of X = 1,219,698 and Y = 390,746 and Northeasterly on a straight line to a point having Coordinates of X = 1,221,734.16 and Y = 391,679.58; thence South 5,268.36 feet to a point having Coordinates of X = 1,221,734.16 and Y = 386,411.22; thence West 3,689.51 feet to the point of beginning, containing approximately **366.93 acres**, all as more particularly outlined on a plat on file in the Office of Mineral Resources, Department of Natural Resources. All bearings, distances and coordinates are based on Louisiana Coordinate System of 1927, (North or South Zone).

NOTE: The above description of the Tract nominated for lease has been provided and corrected, where required, exclusively by the nomination party. Any mineral lease selected from this Tract and awarded by the Louisiana State Mineral Board shall be without warranty of any kind, either express, implied, or statutory, including, but not limited to, the implied warranties of merchantability and fitness for a particular purpose. Should the mineral lease awarded by the Louisiana State Mineral Board be subsequently modified, cancelled or abrogated due to the existence of conflicting leases, operating agreements, private claims or other future obligations or conditions which may affect all or any portion of the leased Tract, it shall not relieve the Lessee of the obligation to pay any bonus due thereon to the Louisiana State Mineral Board, nor shall the Louisiana State Mineral Board be obligated to refund any consideration paid by the Lessor prior to such modification, cancellation, or abrogation, including, but not limited to, bonuses, rentals and royalties.

NOTE: The State of Louisiana does hereby reserve, and this lease shall be subject to, the imprescriptible right of surface use in the nature of a servitude in favor of the Department of Natural Resources, including its Offices and Commissions, for the sole purpose of implementing, constructing, servicing and maintaining approved coastal zone management and/or restoration projects. Utilization of any and all rights derived

under this lease by the mineral lessee, its agents, successors or assigns, shall not interfere with nor hinder the reasonable surface use by the Department of Natural Resources, its Offices or Commissions, as herein above reserved.

Applicant: SOUTH LOUISIANA MINERALS, INC.

Bidder	Cash Payment	Price/Acre	Rental	Oil	Gas	Other

Legend
07120042
Blocks



CAMERON PARISH

GULF OF MEXICO

WEST CAMERON AREA, REVISED

WC0016

P.O.B.

SABINE PASS AREA

TRACT 39495 - Portion of Block 16, West Cameron Area, Revised, Cameron Parish, Louisiana

The beds and bottoms of all water bodies belonging to the State of Louisiana located in Block 16, West Cameron Area, Revised, together with any present lands formed by accretion to the shoreline or islands formed therein, located in Cameron Parish, Louisiana, owned by and not presently under mineral lease as of December 12, 2007, from the State of Louisiana, the geographical area of which is more fully described as follows: Beginning at a point on the West line of Block 16, West Cameron Area, Revised, having Coordinates of X = 1,214,355.14 and Y = 386,411.22; thence North 1,186.07 feet along the West line of said Block 16 to an intersection point on the Louisiana Coastline, as decreed by the Supreme Court of the United States, as determined by a Special Master appointed therein, in litigation styled *United States v. State of Louisiana et al No. 9 Original*, in 1975, having Coordinates of X = 1,214,355.14 and Y = 387,597.29; thence along said Louisiana Coastline the following: Northeasterly on a straight line to a point having Coordinates of X = 1,215,615 and Y = 388,263; Northeasterly on a straight line to a point having Coordinates of X = 1,216,582 and Y = 389,216; Northeasterly on a straight line to a point having Coordinates of X = 1,217,089 and Y = 389,513; Southeasterly on a straight line to a point having Coordinates of X = 1,217,536 and Y = 389,445 and Northeasterly on a straight line to a point having Coordinates of X = 1,218,044.65 and Y = 389,705.15; thence South 3,293.93 feet to a point having Coordinates of X = 1,218,044.65 and Y = 386,411.22; thence West 3,689.51 feet to the point of beginning, containing approximately **198.42 acres**, all as more particularly outlined on a plat on file in the Office of Mineral Resources, Department of Natural Resources. All bearings, distances and coordinates are based on Louisiana Coordinate System of 1927, (North or South Zone).

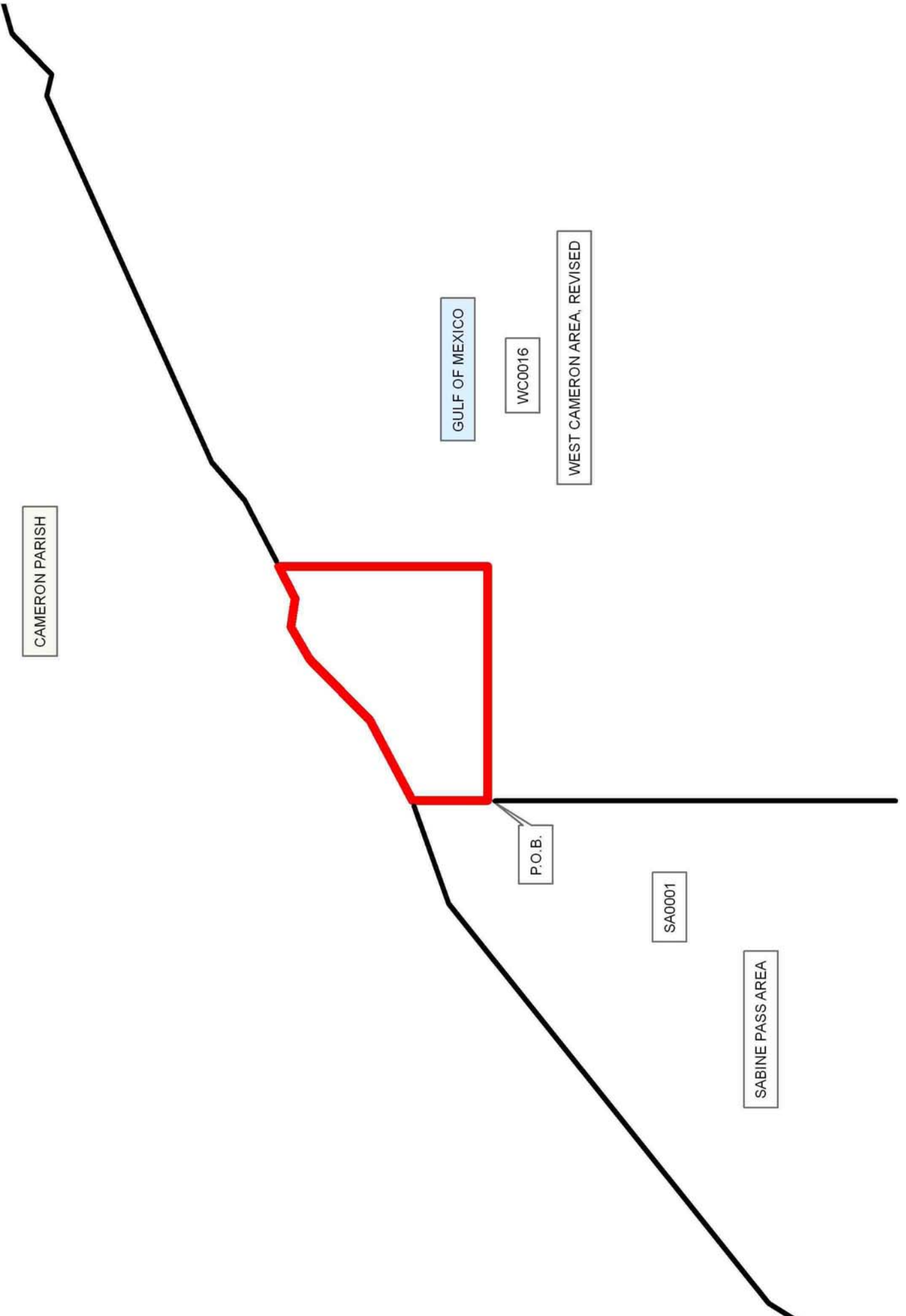
NOTE: The above description of the Tract nominated for lease has been provided and corrected, where required, exclusively by the nomination party. Any mineral lease selected from this Tract and awarded by the Louisiana State Mineral Board shall be without warranty of any kind, either express, implied, or statutory, including, but not limited to, the implied warranties of merchantability and fitness for a particular purpose. Should the mineral lease awarded by the Louisiana State Mineral Board be subsequently modified, cancelled or abrogated due to the existence of conflicting leases, operating agreements, private claims or other future obligations or conditions which may affect all or any portion of the leased Tract, it shall not relieve the Lessee of the obligation to pay any bonus due thereon to the Louisiana State Mineral Board, nor shall the Louisiana State Mineral Board be obligated to refund any consideration paid by the Lessor prior to such modification, cancellation, or abrogation, including, but not limited to, bonuses, rentals and royalties.

NOTE: The State of Louisiana does hereby reserve, and this lease shall be subject to, the imprescriptible right of surface use in the nature of a servitude in favor of the Department of Natural Resources, including its

Offices and Commissions, for the sole purpose of implementing, constructing, servicing and maintaining approved coastal zone management and/or restoration projects. Utilization of any and all rights derived under this lease by the mineral lessee, its agents, successors or assigns, shall not interfere with nor hinder the reasonable surface use by the Department of Natural Resources, its Offices or Commissions, as herein above reserved.

Applicant: SOUTH LOUISIANA MINERALS, INC.

Bidder	Cash Payment	Price/Acre	Rental	Oil	Gas	Other



TRACT 39496 - Portion of Block 1, Sabine Pass Area, Cameron Parish, Louisiana

The beds and bottoms of all water bodies belonging to the State of Louisiana located in Block 1, Sabine Pass Area, together with any present lands formed by accretion to the shoreline or islands formed therein, located in Cameron Parish, Louisiana, owned by and not presently under mineral lease as of December 12, 2007, from the State of Louisiana, the geographical area of which is more fully described as follows: Beginning at a point on the Western boundary of Block 1, Sabine Pass Area, also being a point on the Texas-Louisiana boundary and on the Louisiana Coastline, as decreed by the Supreme Court of the United States, as determined by a Special Master appointed therein, in litigation styled *United States v. State of Louisiana et al No. 9 Original*, in 1975, having Coordinates of X = 1,205,205.04 and Y = 379,935.04; thence along said Louisiana Coastline the following: Northeasterly on a straight line to a point having Coordinates of X = 1,205,843 and Y = 381,750; Northeasterly on a straight line to a point having Coordinates of X = 1,206,440 and Y = 381,985; Northeasterly on a straight line to a point having Coordinates of X = 1,212,770 and Y = 387,027; Southeasterly on a straight line to a point having Coordinates of X = 1,213,168 and Y = 386,970 and Northeasterly on a straight line to the Northeast corner of said Block 1, also being the Northwest corner of Block 16, West Cameron Area, Revised, having Coordinates of X = 1,214,355.14 and Y = 387,597.29; thence South 8,565.10 feet along the East line of said Block 1 to its Southeast corner, also being the Southwest corner of said Block 16 having Coordinates of X = 1,214,355.14 and Y = 379,032.19; thence West 8,967.14 feet along the South line of said Block 1 to its Southwest corner, also being a point on the Texas-Louisiana boundary having Coordinates of X = 1,205,388.00 and Y = 379,032.19; thence North 11 degrees 27 minutes 20 seconds West 921.20 feet along the Texas-Louisiana boundary and along the Western boundary of said Block 1 to the point of beginning, containing approximately **1,156.58 acres, LESS AND EXCEPT** that portion thereof, if any, located West of the boundary line between the States of Texas and Louisiana as determined by the report of the Special Master and adjudicated by the Supreme Court of the United States in litigation styled **Texas v. Louisiana, et al No. 36 Original**, or as otherwise approved by said court, all as more particularly outlined on a plat on file in the Office of Mineral Resources, Department of Natural Resources. All bearings, distances and coordinates are based on Louisiana Coordinate System of 1927, (North or South Zone).

NOTE: The above description of the Tract nominated for lease has been provided and corrected, where required, exclusively by the nomination party. Any mineral lease selected from this Tract and awarded by the Louisiana State Mineral Board shall be without warranty of any kind, either express, implied, or statutory, including, but not limited to, the implied warranties of merchantability and fitness for a particular purpose. Should the mineral lease awarded by the Louisiana State Mineral Board be subsequently modified, cancelled or abrogated due to the existence of conflicting leases, operating agreements, private claims or

other future obligations or conditions which may affect all or any portion of the leased Tract, it shall not relieve the Lessee of the obligation to pay any bonus due thereon to the Louisiana State Mineral Board, nor shall the Louisiana State Mineral Board be obligated to refund any consideration paid by the Lessor prior to such modification, cancellation, or abrogation, including, but not limited to, bonuses, rentals and royalties.

NOTE: The State of Louisiana does hereby reserve, and this lease shall be subject to, the imprescriptible right of surface use in the nature of a servitude in favor of the Department of Natural Resources, including its Offices and Commissions, for the sole purpose of implementing, constructing, servicing and maintaining approved coastal zone management and/or restoration projects. Utilization of any and all rights derived under this lease by the mineral lessee, its agents, successors or assigns, shall not interfere with nor hinder the reasonable surface use by the Department of Natural Resources, its Offices or Commissions, as herein above reserved.

NOTE: It appears, according to our records, that a portion of this Tract is located within the restrictive safety fairway area as set out by the Corps of Engineers, U.S. Army and/or the restrictive anchorage area as set out by the U.S. Coast Guard.

Applicant: SOUTH LOUISIANA MINERALS, INC.

Bidder	Cash Payment	Price/Acre	Rental	Oil	Gas	Other



CAMERON PARISH

WC0016

GULF OF MEXICO

WEST CAMERON AREA, REVISED

SA0002

SABINE PASS AREA

P.O.B.

TRACT 39497 - Portion of Block 16, West Cameron Area, Revised, Cameron Parish, Louisiana

The beds and bottoms of all water bodies belonging to the State of Louisiana located in Block 16, West Cameron Area, Revised, together with any present lands formed by accretion to the shoreline or islands formed therein, located in Cameron Parish, Louisiana, owned by and not presently under mineral lease as of December 12, 2007, from the State of Louisiana, the geographical area of which is more fully described as follows: Beginning at a point on the West line of Block 16, West Cameron Area, Revised, having Coordinates of X = 1,214,355.14 and Y = 386,411.22; thence East 3,689.51 feet to a point having Coordinates of X = 1,218,044.65 and Y = 386,411.22; thence South 7,379.03 feet to a point on the South line of said Block 16 having Coordinates of X = 1,218,044.65 and Y = 379,032.19; thence West 3,689.51 feet along the South line of said Block 16 to its Southwest corner having Coordinates of X = 1,214,355.14 and Y = 379,032.19; thence North 7,379.03 feet along the West line of said Block 16 to the point of beginning, containing approximately **625.00 acres**, all as more particularly outlined on a plat on file in the Office of Mineral Resources, Department of Natural Resources. All bearings, distances and coordinates are based on Louisiana Coordinate System of 1927, (North or South Zone).

NOTE: The above description of the Tract nominated for lease has been provided and corrected, where required, exclusively by the nomination party. Any mineral lease selected from this Tract and awarded by the Louisiana State Mineral Board shall be without warranty of any kind, either express, implied, or statutory, including, but not limited to, the implied warranties of merchantability and fitness for a particular purpose. Should the mineral lease awarded by the Louisiana State Mineral Board be subsequently modified, cancelled or abrogated due to the existence of conflicting leases, operating agreements, private claims or other future obligations or conditions which may affect all or any portion of the leased Tract, it shall not relieve the Lessee of the obligation to pay any bonus due thereon to the Louisiana State Mineral Board, nor shall the Louisiana State Mineral Board be obligated to refund any consideration paid by the Lessor prior to such modification, cancellation, or abrogation, including, but not limited to, bonuses, rentals and royalties.

NOTE: The State of Louisiana does hereby reserve, and this lease shall be subject to, the imprescriptible right of surface use in the nature of a servitude in favor of the Department of Natural Resources, including its Offices and Commissions, for the sole purpose of implementing, constructing, servicing and maintaining approved coastal zone management and/or restoration projects. Utilization of any and all rights derived under this lease by the mineral lessee, its agents, successors or assigns, shall not interfere with nor hinder the reasonable surface use by the Department of Natural Resources, its Offices or Commissions, as herein above reserved.

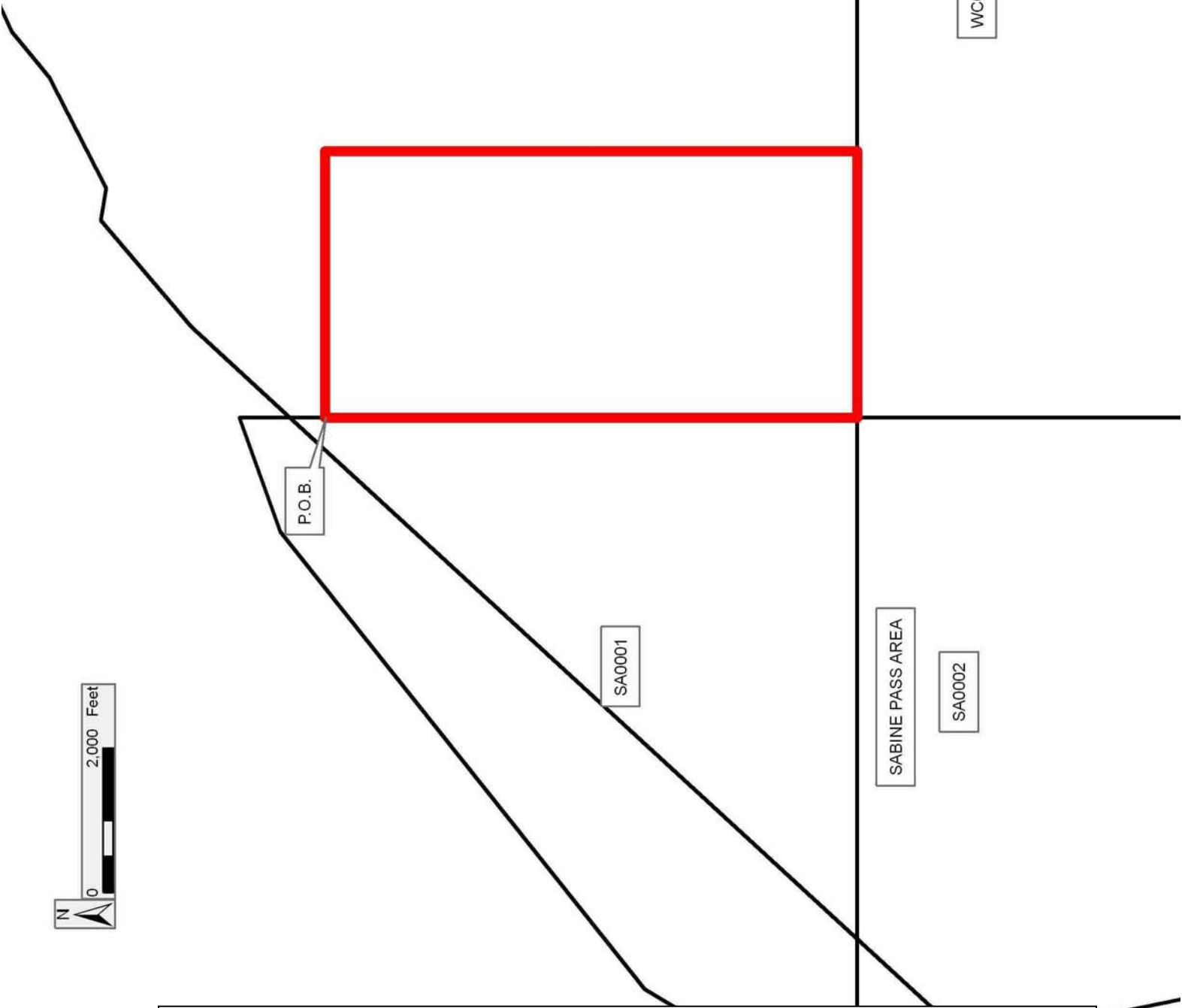
Applicant: SOUTH LOUISIANA MINERALS, INC.

Bidder	Cash Payment	Price/Acre	Rental	Oil	Gas	Other

Legend

 07120043

 Blocks



TRACT 39498 - Portion of Block 16, West Cameron Area, Revised, Cameron Parish, Louisiana

The beds and bottoms of all water bodies belonging to the State of Louisiana located in Block 16, West Cameron Area, Revised, together with any present lands formed by accretion to the shoreline or islands formed therein, located in Cameron Parish, Louisiana, owned by and not presently under mineral lease as of December 12, 2007, from the State of Louisiana, the geographical area of which is more fully described as follows: Beginning at a point having Coordinates of X = 1,218,044.65 and Y = 386,411.22; thence East 3,689.51 feet to a point having Coordinates of X = 1,221,734.16 and Y = 386,411.22; thence South 7,379.03 feet to a point on the South line of Block 16, West Cameron Area, Revised, having Coordinates of X = 1,221,734.16 and Y = 379,032.19; thence West 3,689.51 feet along the South line of said Block 16 to a point having Coordinates of X = 1,218,044.65 and Y = 379,032.19; thence North 7,379.03 feet to the point of beginning, containing approximately **625.00 acres**, all as more particularly outlined on a plat on file in the Office of Mineral Resources, Department of Natural Resources. All bearings, distances and coordinates are based on Louisiana Coordinate System of 1927, (North or South Zone).

NOTE: The above description of the Tract nominated for lease has been provided and corrected, where required, exclusively by the nomination party. Any mineral lease selected from this Tract and awarded by the Louisiana State Mineral Board shall be without warranty of any kind, either express, implied, or statutory, including, but not limited to, the implied warranties of merchantability and fitness for a particular purpose. Should the mineral lease awarded by the Louisiana State Mineral Board be subsequently modified, cancelled or abrogated due to the existence of conflicting leases, operating agreements, private claims or other future obligations or conditions which may affect all or any portion of the leased Tract, it shall not relieve the Lessee of the obligation to pay any bonus due thereon to the Louisiana State Mineral Board, nor shall the Louisiana State Mineral Board be obligated to refund any consideration paid by the Lessor prior to such modification, cancellation, or abrogation, including, but not limited to, bonuses, rentals and royalties.

NOTE: The State of Louisiana does hereby reserve, and this lease shall be subject to, the imprescriptible right of surface use in the nature of a servitude in favor of the Department of Natural Resources, including its Offices and Commissions, for the sole purpose of implementing, constructing, servicing and maintaining approved coastal zone management and/or restoration projects. Utilization of any and all rights derived under this lease by the mineral lessee, its agents, successors or assigns, shall not interfere with nor hinder the reasonable surface use by the Department of Natural Resources, its Offices or Commissions, as herein above reserved.

Applicant: SOUTH LOUISIANA MINERALS, INC.

Bidder	Cash Payment	Price/Acre	Rental	Oil	Gas	Other

Legend

07120044

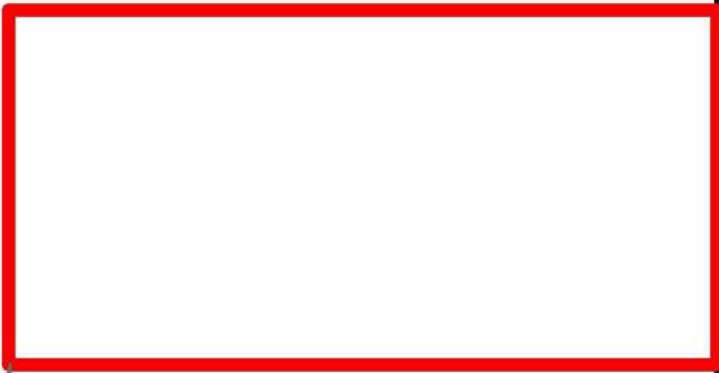
Blocks

CAMERON PARISH

WC0016

GULF OF MEXICO

P.O.B.



WC0049

WEST CAMERON AREA, REVISED

SABINE PASS AREA



TRACT 39499 - Portion of Block 16, West Cameron Area, Revised, Cameron Parish, Louisiana

The beds and bottoms of all water bodies belonging to the State of Louisiana located in Block 16, West Cameron Area, Revised, together with any present lands formed by accretion to the shoreline or islands formed therein, located in Cameron Parish, Louisiana, owned by and not presently under mineral lease as of December 12, 2007, from the State of Louisiana, the geographical area of which is more fully described as follows: Beginning at a point on the East line of Block 16, West Cameron Area, Revised, having Coordinates of X = 1,229,113.18 and Y = 386,411.22; thence South 7,379.02 feet along the East line of said Block 16 to its Southeast corner having Coordinates of X = 1,229,113.18 and Y = 379,032.19; thence West 7,379.02 feet along the South line of said Block 16 to a point having Coordinates of X = 1,221,734.16 and Y = 379,032.19; thence North 7,379.02 feet to a point having Coordinates of X = 1,221,734.16 and Y = 386,411.22; thence East 7,379.02 feet to the point of beginning, containing approximately **1,250.00 acres**, all as more particularly outlined on a plat on file in the Office of Mineral Resources, Department of Natural Resources. All bearings, distances and coordinates are based on Louisiana Coordinate System of 1927, (North or South Zone).

NOTE: The above description of the Tract nominated for lease has been provided and corrected, where required, exclusively by the nomination party. Any mineral lease selected from this Tract and awarded by the Louisiana State Mineral Board shall be without warranty of any kind, either express, implied, or statutory, including, but not limited to, the implied warranties of merchantability and fitness for a particular purpose. Should the mineral lease awarded by the Louisiana State Mineral Board be subsequently modified, cancelled or abrogated due to the existence of conflicting leases, operating agreements, private claims or other future obligations or conditions which may affect all or any portion of the leased Tract, it shall not relieve the Lessee of the obligation to pay any bonus due thereon to the Louisiana State Mineral Board, nor shall the Louisiana State Mineral Board be obligated to refund any consideration paid by the Lessor prior to such modification, cancellation, or abrogation, including, but not limited to, bonuses, rentals and royalties.

NOTE: The State of Louisiana does hereby reserve, and this lease shall be subject to, the imprescriptible right of surface use in the nature of a servitude in favor of the Department of Natural Resources, including its Offices and Commissions, for the sole purpose of implementing, constructing, servicing and maintaining approved coastal zone management and/or restoration projects. Utilization of any and all rights derived under this lease by the mineral lessee, its agents, successors or assigns, shall not interfere with nor hinder the reasonable surface use by the Department of Natural Resources, its Offices or Commissions, as herein above reserved.

Applicant: SOUTH LOUISIANA MINERALS, INC.

Bidder	Cash Payment	Price/Acre	Rental	Oil	Gas	Other

Legend

- 07120045
- Blocks
- Active_Leases

