

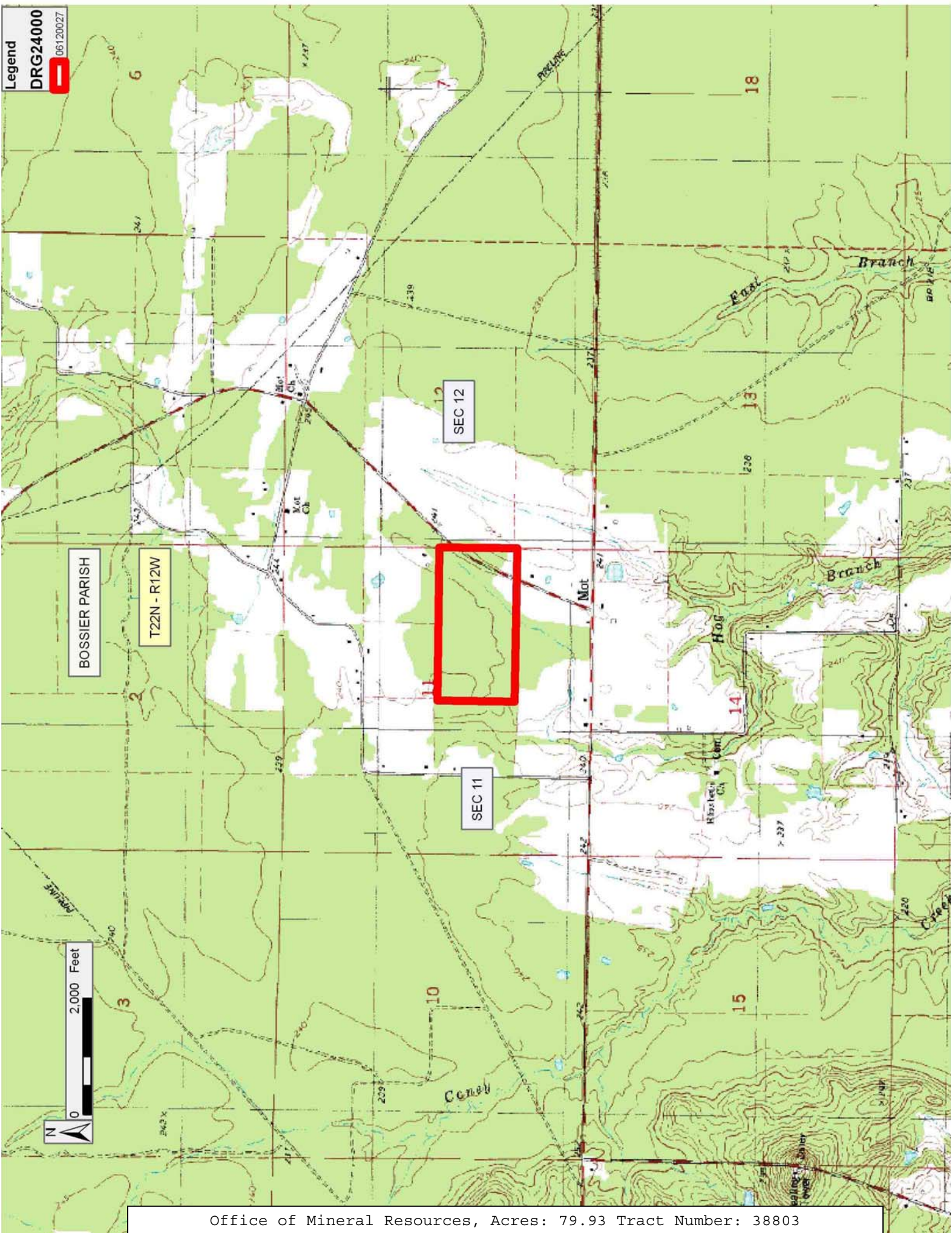
TRACT 38803 - Bossier Parish, Louisiana

All lands, including lands now or formerly constituting the beds and bottoms of all water bodies of every nature and description, owned by and not presently under mineral lease as of December 13, 2006 from the State of Louisiana, situated in Bossier Parish, Louisiana, and being more fully described as follows: Section 11, Township 22 North, Range 12 West, North half (N/2) of Southeast Quarter (SE/4), containing approximately **79.93 acres**, all as more particularly outlined on a plat on file in the Office of Mineral Resources, Department of Natural Resources. All bearings, distances and coordinates are based on Louisiana Coordinate System of 1927, (North or South Zone), where applicable.

NOTE: The above description of the Tract nominated for lease has been provided and corrected, where required, exclusively by the nomination party. Any mineral lease selected from this Tract and awarded by the Louisiana State Mineral Board shall be without warranty of any kind, either express, implied, or statutory, including, but not limited to, the implied warranties of merchantability and fitness for a particular purpose. Should the mineral lease awarded by the Louisiana State Mineral Board be subsequently modified, cancelled or abrogated due to the existence of conflicting leases, operating agreements, private claims or other future obligations or conditions which may affect all or any portion of the leased Tract, it shall not relieve the Lessee of the obligation to pay any bonus due thereon to the Louisiana State Mineral Board, nor shall the Louisiana State Mineral Board be obligated to refund any consideration paid by the Lessor prior to such modification, cancellation, or abrogation, including, but not limited to, bonuses, rentals and royalties.

Applicant: JOHN B. GREER, JR.

Bidder	Cash Payment	Price/Acre	Rental	Oil	Gas	Other



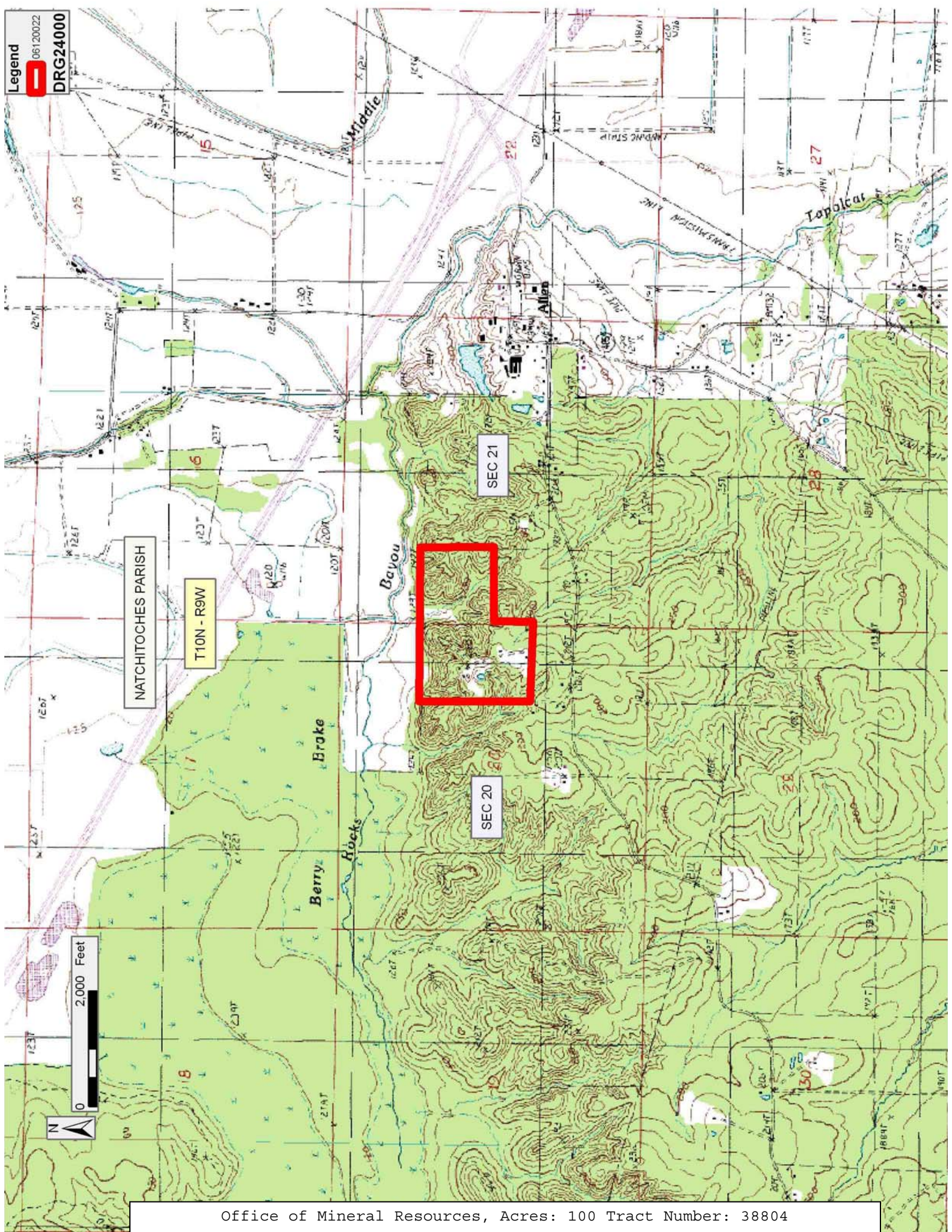
TRACT 38804 - Natchitoches Parish, Louisiana

The mineral rights only on and under all lands now or formerly constituting the beds and bottoms of all water bodies of every nature and description, and under all other lands owned by and not presently under mineral lease as of December 13, 2006, from the State of Louisiana situated in Natchitoches Parish, Louisiana, and being more fully described as follows: The North half (N/2) of the Northeast quarter (NE/4) of the Southeast quarter (SE/4) of Section 20; the Southeast quarter (SE/4) of the Northeast quarter (NE/4) of Section 20, and the Southwest quarter (SW/4) of the Northwest quarter (NW/4) of Section 21, Township 10 North, Range 9 West, containing approximately **100 acres**, all as more particularly outlined on a plat on file in the Office of Mineral Resources, Department of Natural Resources. All bearings, distances and coordinates are based on Louisiana Coordinate System of 1927, (North or South Zone), where applicable.

NOTE: The above description of the Tract nominated for lease has been provided and corrected, where required, exclusively by the nomination party. Any mineral lease selected from this Tract and awarded by the Louisiana State Mineral Board shall be without warranty of any kind, either express, implied, or statutory, including, but not limited to, the implied warranties of merchantability and fitness for a particular purpose. Should the mineral lease awarded by the Louisiana State Mineral Board be subsequently modified, cancelled or abrogated due to the existence of conflicting leases, operating agreements, private claims or other future obligations or conditions which may affect all or any portion of the leased Tract, it shall not relieve the Lessee of the obligation to pay any bonus due thereon to the Louisiana State Mineral Board, nor shall the Louisiana State Mineral Board be obligated to refund any consideration paid by the Lessor prior to such modification, cancellation, or abrogation, including, but not limited to, bonuses, rentals and royalties.

Applicant: LEE ABER

Bidder	Cash Payment	Price/Acre	Rental	Oil	Gas	Other



Legend
06120022
DRG24000

NATCHITOCHE PARISH

T10N - R9W

SEC 21

SEC 20

Office of Mineral Resources, Acres: 100 Tract Number: 38804

TRACT 38805 - Natchitoches Parish, Louisiana

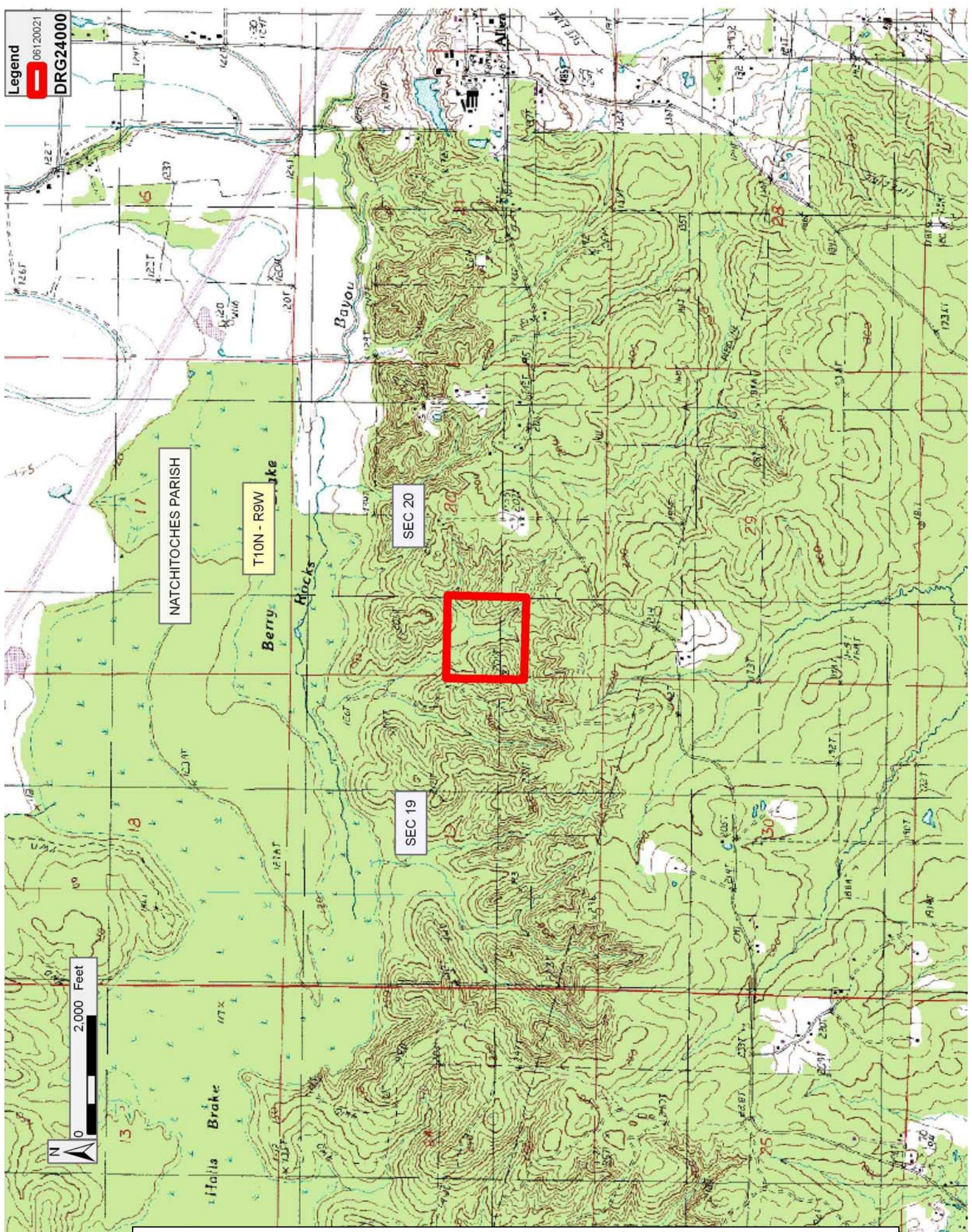
The mineral rights only on and under all lands now or formerly constituting the beds and bottoms of all water bodies of every nature and description, and under all other lands owned by and not presently under mineral lease as of December 13, 2006, from the State of Louisiana situated in Natchitoches Parish, Louisiana, and being more fully described as follows: The Northwest quarter (NW/4) of the Southwest (SW/4) of Section 20, Township 10 North, Range 9 West, containing approximately **40 acres**, all as more particularly outlined on a plat on file in the Office of Mineral Resources, Department of Natural Resources. All bearings, distances and coordinates are based on Louisiana Coordinate System of 1927, (North or South Zone), where applicable.

NOTE: The above description of the Tract nominated for lease has been provided and corrected, where required, exclusively by the nomination party. Any mineral lease selected from this Tract and awarded by the Louisiana State Mineral Board shall be without warranty of any kind, either express, implied, or statutory, including, but not limited to, the implied warranties of merchantability and fitness for a particular purpose. Should the mineral lease awarded by the Louisiana State Mineral Board be subsequently modified, cancelled or abrogated due to the existence of conflicting leases, operating agreements, private claims or other future obligations or conditions which may affect all or any portion of the leased Tract, it shall not relieve the Lessee of the obligation to pay any bonus due thereon to the Louisiana State Mineral Board, nor shall the Louisiana State Mineral Board be obligated to refund any consideration paid by the Lessor prior to such modification, cancellation, or abrogation, including, but not limited to, bonuses, rentals and royalties.

Applicant: LEE ABER

Bidder	Cash Payment	Price/Acre	Rental	Oil	Gas	Other

Legend
06120021
DRG24000



NATCHITOCHE PARISH

T10N - R9W

SEC 20

SEC 19

2,000 Feet



TRACT 38806 - Natchitoches Parish, Louisiana

The mineral rights only on and under all lands now or formerly constituting the beds and bottoms of all water bodies of every nature and description, and under all other lands owned by and not presently under mineral lease as of December 13, 2006, from the State of Louisiana situated in Natchitoches Parish, Louisiana, and being more fully described as follows: The 17 acre West side of the Southwest quarter (SW/4) of the Northwest quarter (NW/4) of Section 29 and the Southeast quarter (SE/4) of the Northeast quarter (NE/4) of Section 30, Township 10 North, Range 9 West, containing approximately **57 acres**, all as more particularly outlined on a plat on file in the Office of Mineral Resources, Department of Natural Resources. All bearings, distances and coordinates are based on Louisiana Coordinate System of 1927, (North or South Zone), where applicable.

NOTE: The above description of the Tract nominated for lease has been provided and corrected, where required, exclusively by the nomination party. Any mineral lease selected from this Tract and awarded by the Louisiana State Mineral Board shall be without warranty of any kind, either express, implied, or statutory, including, but not limited to, the implied warranties of merchantability and fitness for a particular purpose. Should the mineral lease awarded by the Louisiana State Mineral Board be subsequently modified, cancelled or abrogated due to the existence of conflicting leases, operating agreements, private claims or other future obligations or conditions which may affect all or any portion of the leased Tract, it shall not relieve the Lessee of the obligation to pay any bonus due thereon to the Louisiana State Mineral Board, nor shall the Louisiana State Mineral Board be obligated to refund any consideration paid by the Lessor prior to such modification, cancellation, or abrogation, including, but not limited to, bonuses, rentals and royalties.

Applicant: LEE ABER

Bidder	Cash Payment	Price/Acre	Rental	Oil	Gas	Other

