

TRACT 38763 - Lafourche and St. Charles Parishes, Louisiana

All of the lands now or formerly constituting the beds and bottoms of all water bodies of every nature and description the title of which vests in the State of Louisiana, together with all islands arising therein and other lands formed by accretion or by reliction, where allowed by law, excepting tax adjudicated lands, and not presently under mineral lease and cross hatched on December 13, 2006, situated in Lafourche and St. Charles Parishes, Louisiana, and more particularly described as follows: Beginning at a point having Coordinates of X = 2,330,760.00 and Y = 385,108.00; thence East 7,375.00 feet to a point having Coordinates of X = 2,338,135.00 and Y = 385,108.00; thence South 14,750.00 feet to a point having Coordinates of X = 2,338,135.00 and Y = 370,358.00; thence West 7,375.00 feet to a point having Coordinates of X = 2,330,760.00 and Y = 370,358.00; thence North 14,750.00 feet to the point of beginning, containing approximately **2,497.27 acres**, all as more particularly outlined on a plat on file in the Office of Mineral Resources, Department of Natural Resources. All bearings, distances and coordinates are based on Louisiana Coordinate System of 1927, (North or South Zone), where applicable.

NOTE: The above description of the Tract nominated for lease has been provided and corrected, where required, exclusively by the nomination party. Any mineral lease selected from this Tract and awarded by the Louisiana State Mineral Board shall be without warranty of any kind, either express, implied, or statutory, including, but not limited to, the implied warranties of merchantability and fitness for a particular purpose. Should the mineral lease awarded by the Louisiana State Mineral Board be subsequently modified, cancelled or abrogated due to the existence of conflicting leases, operating agreements, private claims or other future obligations or conditions which may affect all or any portion of the leased Tract, it shall not relieve the Lessee of the obligation to pay any bonus due thereon to the Louisiana State Mineral Board, nor shall the Louisiana State Mineral Board be obligated to refund any consideration paid by the Lessor prior to such modification, cancellation, or abrogation, including, but not limited to, bonuses, rentals and royalties.

NOTE: The State of Louisiana does hereby reserve, and this lease shall be subject to, the imprescriptible right of surface use in the nature of a servitude in favor of the Department of Natural Resources, including its Offices and Commissions, for the sole purpose of implementing, constructing, servicing and maintaining approved coastal zone management and/or restoration projects. Utilization of any and all rights derived under this lease by the mineral lessee, its agents, successors or assigns, shall not interfere with nor hinder the reasonable surface use by the Department of Natural Resources, its Offices or Commissions, as herein above reserved.

Bidder	Cash Payment	Price/Acre	Rental	Oil	Gas	Other
--------	--------------	------------	--------	-----	-----	-------

Applicant: IHDW PETROLEUM COMPANY

T15S - R22E

T16S - R22E



T15S - R21E

T16S - R21E

P.O.B.

LAKE SALVADOR

ST CHARLES PARISH

LAFOURCHE PARISH

TRACT 38764 - Lafourche and St. Charles Parishes, Louisiana

All of the lands now or formerly constituting the beds and bottoms of all water bodies of every nature and description the title of which vests in the State of Louisiana, together with all islands arising therein and other lands formed by accretion or by reliction, where allowed by law, excepting tax adjudicated lands, and not presently under mineral lease and cross hatched on December 13, 2006, situated in Lafourche and St. Charles Parishes, Louisiana, and more particularly described as follows: Beginning at a point having Coordinates of X = 2,338,135.00 and Y = 385,108.00; thence East 7,375.00 feet to a point having Coordinates of X = 2,345,510.00 and Y = 385,108.00; thence South 14,750.00 feet to a point having Coordinates of X = 2,345,510.00 and Y = 370,358.00; thence West 7,375.00 feet to a point having Coordinates of X = 2,338,135.00 and Y = 370,358.00; thence North 14,750.00 feet to the point of beginning, containing approximately **2,497.27 acres**, all as more particularly outlined on a plat on file in the Office of Mineral Resources, Department of Natural Resources. All bearings, distances and coordinates are based on Louisiana Coordinate System of 1927, (North or South Zone), where applicable.

NOTE: The above description of the Tract nominated for lease has been provided and corrected, where required, exclusively by the nomination party. Any mineral lease selected from this Tract and awarded by the Louisiana State Mineral Board shall be without warranty of any kind, either express, implied, or statutory, including, but not limited to, the implied warranties of merchantability and fitness for a particular purpose. Should the mineral lease awarded by the Louisiana State Mineral Board be subsequently modified, cancelled or abrogated due to the existence of conflicting leases, operating agreements, private claims or other future obligations or conditions which may affect all or any portion of the leased Tract, it shall not relieve the Lessee of the obligation to pay any bonus due thereon to the Louisiana State Mineral Board, nor shall the Louisiana State Mineral Board be obligated to refund any consideration paid by the Lessor prior to such modification, cancellation, or abrogation, including, but not limited to, bonuses, rentals and royalties.

NOTE: The State of Louisiana does hereby reserve, and this lease shall be subject to, the imprescriptible right of surface use in the nature of a servitude in favor of the Department of Natural Resources, including its Offices and Commissions, for the sole purpose of implementing, constructing, servicing and maintaining approved coastal zone management and/or restoration projects. Utilization of any and all rights derived under this lease by the mineral lessee, its agents, successors or assigns, shall not interfere with nor hinder the reasonable surface use by the Department of Natural Resources, its Offices or Commissions, as herein above reserved.

Applicant: IHDW PETROLEUM COMPANY

Bidder	Cash Payment	Price/Acre	Rental	Oil	Gas	Other



P.O.B.

T15S - R22E

T16S - R22E

LAKE SALVADOR

ST CHARLES PARISH

LAFOURCHE PARISH

TRACT 38765 - Jefferson Lafourche and St. Charles Parishes, Louisiana

All of the lands now or formerly constituting the beds and bottoms of all water bodies of every nature and description the title of which vests in the State of Louisiana, together with all islands arising therein and other lands formed by accretion or by reliction, where allowed by law, excepting tax adjudicated lands, and not presently under mineral lease and cross hatched on December 13, 2006, situated in Jefferson Lafourche and St. Charles Parishes, Louisiana, and more particularly described as follows: Beginning at a point having Coordinates of X = 2,345,510.00 and Y = 385,108.00; thence East 7,375.00 feet to a point having Coordinates of X = 2,352,885.00 and Y = 385,108.00; thence South 14,750.00 feet to a point having Coordinates of X = 2,352,885.00 and Y = 370,358.00; thence West 7,375.00 feet to a point having Coordinates of X = 2,345,510.00 and Y = 370,358.00; thence North 14,750.00 feet to the point of beginning, containing approximately **2,497.27 acres**, all as more particularly outlined on a plat on file in the Office of Mineral Resources, Department of Natural Resources. All bearings, distances and coordinates are based on Louisiana Coordinate System of 1927, (North or South Zone), where applicable.

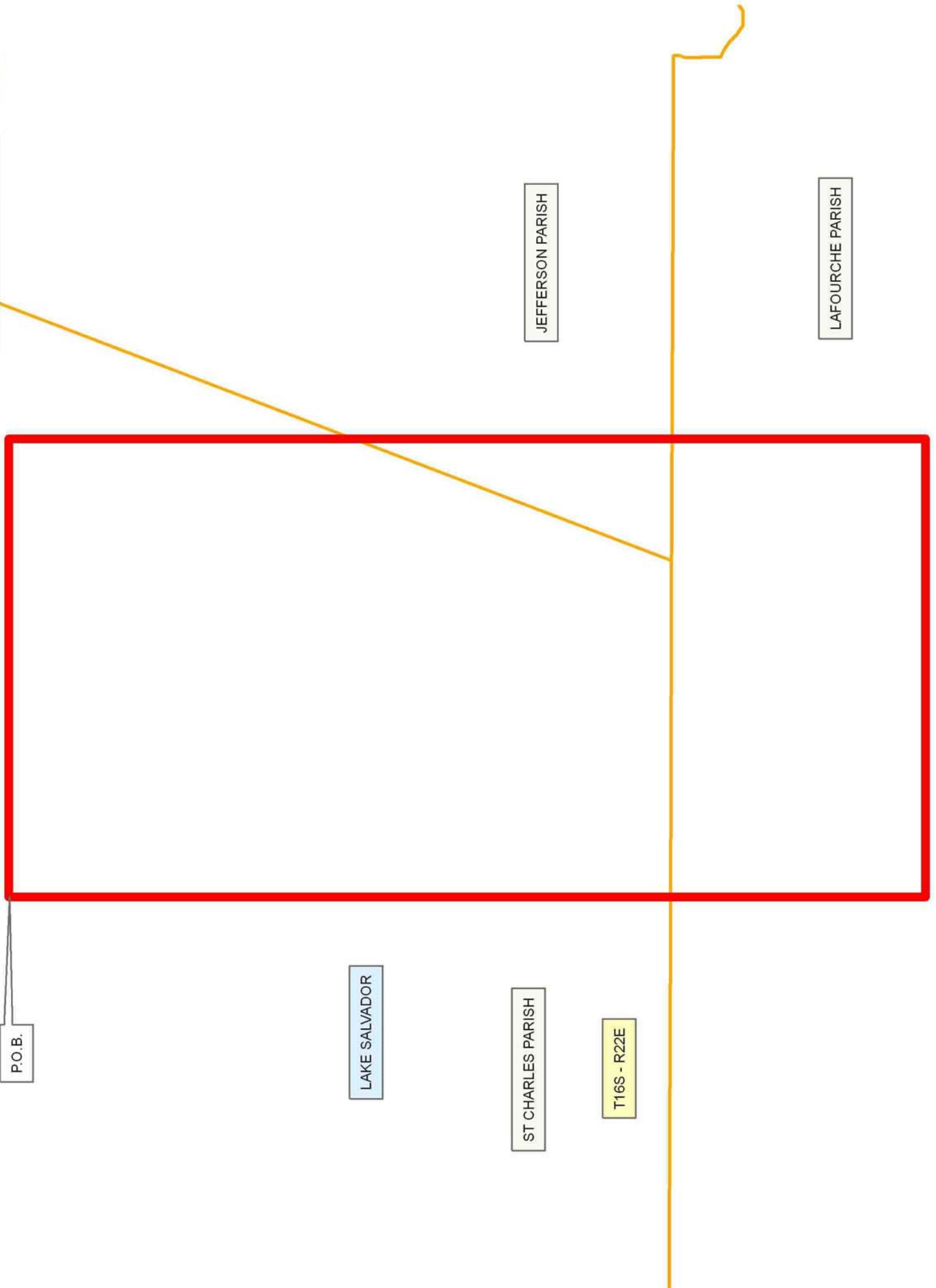
NOTE: The above description of the Tract nominated for lease has been provided and corrected, where required, exclusively by the nomination party. Any mineral lease selected from this Tract and awarded by the Louisiana State Mineral Board shall be without warranty of any kind, either express, implied, or statutory, including, but not limited to, the implied warranties of merchantability and fitness for a particular purpose. Should the mineral lease awarded by the Louisiana State Mineral Board be subsequently modified, cancelled or abrogated due to the existence of conflicting leases, operating agreements, private claims or other future obligations or conditions which may affect all or any portion of the leased Tract, it shall not relieve the Lessee of the obligation to pay any bonus due thereon to the Louisiana State Mineral Board, nor shall the Louisiana State Mineral Board be obligated to refund any consideration paid by the Lessor prior to such modification, cancellation, or abrogation, including, but not limited to, bonuses, rentals and royalties.

NOTE: The State of Louisiana does hereby reserve, and this lease shall be subject to, the imprescriptible right of surface use in the nature of a servitude in favor of the Department of Natural Resources, including its Offices and Commissions, for the sole purpose of implementing, constructing, servicing and maintaining approved coastal zone management and/or restoration projects. Utilization of any and all rights derived under this lease by the mineral lessee, its agents, successors or assigns, shall not interfere with nor hinder the reasonable surface use by the Department of Natural Resources, its Offices or Commissions, as herein above reserved.

Applicant: IHDW PETROLEUM COMPANY

Bidder	Cash Payment	Price/Acre	Rental	Oil	Gas	Other

Legend
06120031
Counties



P.O.B.

LAKE SALVADOR

ST CHARLES PARISH

T16S - R22E

JEFFERSON PARISH

LAFOURCHE PARISH

TRACT 38766 - Lafourche and St. Charles Parishes, Louisiana

All of the lands now or formerly constituting the beds and bottoms of all water bodies of every nature and description the title of which vests in the State of Louisiana, together with all islands arising therein and other lands formed by accretion or by reliction, where allowed by law, excepting tax adjudicated lands, and not presently under mineral lease and cross hatched on December 13, 2006, situated in Lafourche and St. Charles Parishes, Louisiana, and more particularly described as follows: Beginning at a point having Coordinates of X = 2,323,385.00 and Y = 385,108.00; thence East 7,375.00 feet to a point having Coordinates of X = 2,330,760.00 and Y = 385,108.00; thence South 14,750.00 feet to a point having Coordinates of X = 2,330,760.00 and Y = 370,358.00; thence West 7,375.00 feet to a point having Coordinates of X = 2,323,385.00 and Y = 370,358.00; thence North 14,750.00 feet to the point of beginning, containing approximately **2,497.27 acres**, all as more particularly outlined on a plat on file in the Office of Mineral Resources, Department of Natural Resources. All bearings, distances and coordinates are based on Louisiana Coordinate System of 1927, (North or South Zone), where applicable.

NOTE: The above description of the Tract nominated for lease has been provided and corrected, where required, exclusively by the nomination party. Any mineral lease selected from this Tract and awarded by the Louisiana State Mineral Board shall be without warranty of any kind, either express, implied, or statutory, including, but not limited to, the implied warranties of merchantability and fitness for a particular purpose. Should the mineral lease awarded by the Louisiana State Mineral Board be subsequently modified, cancelled or abrogated due to the existence of conflicting leases, operating agreements, private claims or other future obligations or conditions which may affect all or any portion of the leased Tract, it shall not relieve the Lessee of the obligation to pay any bonus due thereon to the Louisiana State Mineral Board, nor shall the Louisiana State Mineral Board be obligated to refund any consideration paid by the Lessor prior to such modification, cancellation, or abrogation, including, but not limited to, bonuses, rentals and royalties.

NOTE: The State of Louisiana does hereby reserve, and this lease shall be subject to, the imprescriptible right of surface use in the nature of a servitude in favor of the Department of Natural Resources, including its Offices and Commissions, for the sole purpose of implementing, constructing, servicing and maintaining approved coastal zone management and/or restoration projects. Utilization of any and all rights derived under this lease by the mineral lessee, its agents, successors or assigns, shall not interfere with nor hinder the reasonable surface use by the Department of Natural Resources, its Offices or Commissions, as herein above reserved.

Applicant: IHDW PETROLEUM COMPANY

Bidder	Cash Payment	Price/Acre	Rental	Oil	Gas	Other



P.O.B.

T15S - R21E

T16S - R21E

LAKE SALVADOR

ST CHARLES PARISH

LAFOURCHE PARISH

T16S - R21E

T16S - R22E

T16S - R22E

TRACT 38767 - Jefferson and Lafourche Parishes, Louisiana

All of the lands now or formerly constituting the beds and bottoms of all water bodies of every nature and description the title of which vests in the State of Louisiana, together with all islands arising therein and other lands formed by accretion or by reliction, where allowed by law, excepting tax adjudicated lands, and not presently under mineral lease and cross hatched on December 13, 2006, situated in Jefferson and Lafourche Parishes, Louisiana, and more particularly described as follows: Beginning at a point having Coordinates of X = 2,361,280.00 and Y = 377,733.00; thence East 11,450.00 feet to a point having Coordinates of X = 2,372,730.00 and Y = 377,733.00; thence South 00 degrees 01 minutes 32 seconds West 2,233.00 feet to the Northwest corner of State Lease No. 18511 having Coordinates of X = 2,372,729.00 and Y = 375,500.00; thence South 4,263.00 feet along the West boundary of said State Lease No. 18511 to the Northeast corner of State Lease No. 18748 having Coordinates of X = 2,372,729.00 and Y = 371,237.00; thence West 2,915.27 feet along the North boundary of said State Lease No. 18748 to its Northwest corner, also being the Northeast corner of State Lease No. 18868 having Coordinates of X = 2,369,813.73 and Y = 371,237.00; thence along the boundary of said State Lease No. 18868 the following courses: West 600.00 feet and South 37 degrees 26 minutes 02 seconds East 2,921.71 feet to its Southernmost corner, also being the Southwest corner of State Lease No. 18748 having Coordinates of X = 2,370,989.67 and Y = 368,917.00; thence East 1,739.33 feet along the South boundary of said State Lease No. 18748 to its Southeast corner, also being a point on the West boundary of said State Lease No. 18511 having Coordinates of X = 2,372,729.00 and Y = 368,917.00; thence South 4,320.00 feet along the West boundary of said State Lease No. 18511 to its Southwest corner, also being the Northwest corner of State Lease No. 18513 having Coordinates of X = 2,372,729.00 and Y = 364,597.00; thence South 1,614.00 feet along the West boundary of said State Lease No. 18513 to a point having Coordinates of X = 2,372,729.00 and Y = 362,983.00; thence West 11,449.00 feet to a point having Coordinates of X = 2,361,280.00 and Y = 362,983.00; thence North 14,750.00 feet to the point of beginning, containing approximately **920 acres**, all as more particularly outlined on a plat on file in the Office of Mineral Resources, Department of Natural Resources. All bearings, distances and coordinates are based on Louisiana Coordinate System of 1927, (North or South Zone), where applicable.

NOTE: The above description of the Tract nominated for lease has been provided and corrected, where required, exclusively by the nomination party. Any mineral lease selected from this Tract and awarded by the Louisiana State Mineral Board shall be without warranty of any kind, either express, implied, or statutory, including, but not limited to, the implied warranties of merchantability and fitness for a particular purpose. Should the mineral lease awarded by the Louisiana State Mineral Board be subsequently modified, cancelled or abrogated due to the existence of conflicting leases, operating agreements, private claims or other future obligations or conditions which may affect all or any portion

of the leased Tract, it shall not relieve the Lessee of the obligation to pay any bonus due thereon to the Louisiana State Mineral Board, nor shall the Louisiana State Mineral Board be obligated to refund any consideration paid by the Lessor prior to such modification, cancellation, or abrogation, including, but not limited to, bonuses, rentals and royalties.

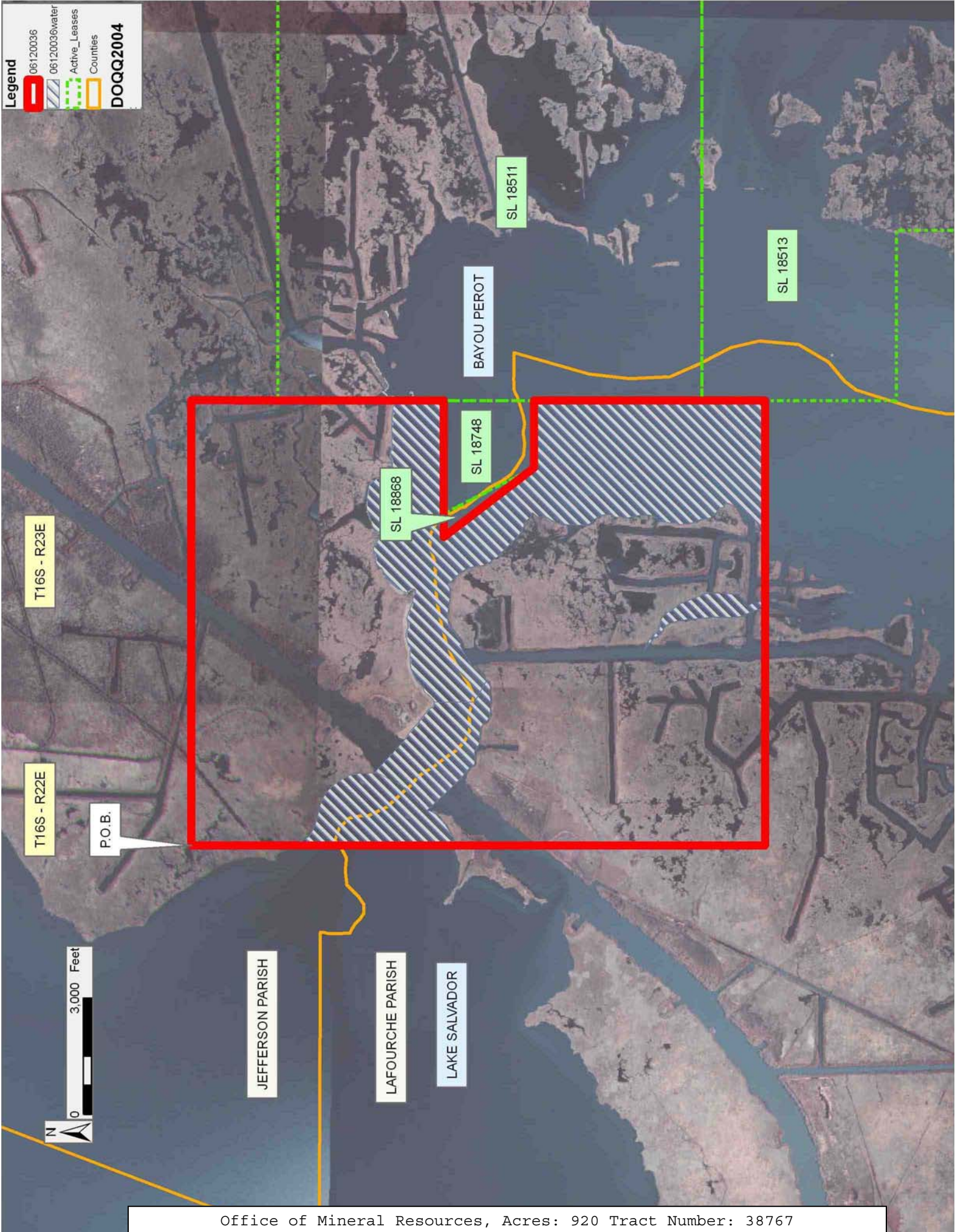
NOTE: The State of Louisiana does hereby reserve, and this lease shall be subject to, the imprescriptible right of surface use in the nature of a servitude in favor of the Department of Natural Resources, including its Offices and Commissions, for the sole purpose of implementing, constructing, servicing and maintaining approved coastal zone management and/or restoration projects. Utilization of any and all rights derived under this lease by the mineral lessee, its agents, successors or assigns, shall not interfere with nor hinder the reasonable surface use by the Department of Natural Resources, its Offices or Commissions, as herein above reserved.

Applicant: IHDW PETROLEUM COMPANY

Bidder	Cash Payment	Price/Acre	Rental	Oil	Gas	Other

Legend

- 06120036
- 06120036water
- Active_Leases
- Counties
- DOQQ2004



T16S - R23E

T16S - R22E

P.O.B.

BAYOU PEROT

SL 18511

SL 18513

SL 18868

SL 18748

JEFFERSON PARISH

LAFOURCHE PARISH

LAKE SALVADOR



TRACT 38768 - Jefferson and Lafourche Parishes, Louisiana

All of the lands now or formerly constituting the beds and bottoms of all water bodies of every nature and description the title of which vests in the State of Louisiana, together with all islands arising therein and other lands formed by accretion or by reliction, where allowed by law, excepting tax adjudicated lands, and not presently under mineral lease and cross hatched on December 13, 2006, situated in Jefferson and Lafourche Parishes, Louisiana, and more particularly described as follows: Beginning at a point having Coordinates of X = 2,352,885.00 and Y = 374,441.00; thence East 8,395.00 feet to a point having Coordinates of X = 2,361,280.00 and Y = 374,441.00; thence South 17,183.00 feet to a point having Coordinates of X = 2,361,280.00 and Y = 357,258.00; thence West 8,395.00 feet to a point having Coordinates of X = 2,352,885.00 and Y = 357,258.00; thence North 17,183.00 feet to the point of beginning, containing approximately **1,180 acres**, all as more particularly outlined on a plat on file in the Office of Mineral Resources, Department of Natural Resources. All bearings, distances and coordinates are based on Louisiana Coordinate System of 1927, (North or South Zone), where applicable.

NOTE: The above description of the Tract nominated for lease has been provided and corrected, where required, exclusively by the nomination party. Any mineral lease selected from this Tract and awarded by the Louisiana State Mineral Board shall be without warranty of any kind, either express, implied, or statutory, including, but not limited to, the implied warranties of merchantability and fitness for a particular purpose. Should the mineral lease awarded by the Louisiana State Mineral Board be subsequently modified, cancelled or abrogated due to the existence of conflicting leases, operating agreements, private claims or other future obligations or conditions which may affect all or any portion of the leased Tract, it shall not relieve the Lessee of the obligation to pay any bonus due thereon to the Louisiana State Mineral Board, nor shall the Louisiana State Mineral Board be obligated to refund any consideration paid by the Lessor prior to such modification, cancellation, or abrogation, including, but not limited to, bonuses, rentals and royalties.

NOTE: The State of Louisiana does hereby reserve, and this lease shall be subject to, the imprescriptible right of surface use in the nature of a servitude in favor of the Department of Natural Resources, including its Offices and Commissions, for the sole purpose of implementing, constructing, servicing and maintaining approved coastal zone management and/or restoration projects. Utilization of any and all rights derived under this lease by the mineral lessee, its agents, successors or assigns, shall not interfere with nor hinder the reasonable surface use by the Department of Natural Resources, its Offices or Commissions, as herein above reserved.

Applicant: IHDW PETROLEUM COMPANY

Bidder	Cash Payment	Price/Acre	Rental	Oil	Gas	Other

Legend

- 06120034
- 06120034water
- Counties
- DOQQ2004**



T16S - R22E



JEFFERSON PARISH

ST CHARLES PARISH

P.O.B.

LAFOURCHE PARISH

LAKE SALVADOR

TRACT 38769 - Lafourche Parish, Louisiana

All of the lands now or formerly constituting the beds and bottoms of all water bodies of every nature and description the title of which vests in the State of Louisiana, together with all islands arising therein and other lands formed by accretion or by reliction, where allowed by law, excepting tax adjudicated lands, and not presently under mineral lease and cross hatched on December 13, 2006, situated in Lafourche Parish, Louisiana, and more particularly described as follows: Beginning at a point having Coordinates of X = 2,334,434.00 and Y = 370,358.00; thence East 18,451.00 feet to a point having Coordinates of X = 2,352,885.00 and Y = 370,358.00; thence South 6,322.00 feet to a point having Coordinates of X = 2,352,885.00 and Y = 364,036.00; thence West 18,391.05 feet to a point on the East boundary of State Lease No. 18468 having Coordinates of X = 2,334,493.95 and Y = 364,036.00; thence North 00 degrees 57 minutes 20 seconds West 3,594.50 feet along the East boundary of said State Lease No. 18468 to its Northeast corner having Coordinates X = 2,334,434.00 and Y = 367,630.00; thence North 2,728.00 feet to the point of beginning, containing approximately **2,480 acres**, all as more particularly outlined on a plat on file in the Office of Mineral Resources, Department of Natural Resources. All bearings, distances and coordinates are based on Louisiana Coordinate System of 1927, (North or South Zone), where applicable.

NOTE: The above description of the Tract nominated for lease has been provided and corrected, where required, exclusively by the nomination party. Any mineral lease selected from this Tract and awarded by the Louisiana State Mineral Board shall be without warranty of any kind, either express, implied, or statutory, including, but not limited to, the implied warranties of merchantability and fitness for a particular purpose. Should the mineral lease awarded by the Louisiana State Mineral Board be subsequently modified, cancelled or abrogated due to the existence of conflicting leases, operating agreements, private claims or other future obligations or conditions which may affect all or any portion of the leased Tract, it shall not relieve the Lessee of the obligation to pay any bonus due thereon to the Louisiana State Mineral Board, nor shall the Louisiana State Mineral Board be obligated to refund any consideration paid by the Lessor prior to such modification, cancellation, or abrogation, including, but not limited to, bonuses, rentals and royalties.

NOTE: The State of Louisiana does hereby reserve, and this lease shall be subject to, the imprescriptible right of surface use in the nature of a servitude in favor of the Department of Natural Resources, including its Offices and Commissions, for the sole purpose of implementing, constructing, servicing and maintaining approved coastal zone management and/or restoration projects. Utilization of any and all rights derived under this lease by the mineral lessee, its agents, successors or assigns, shall not interfere with nor hinder the reasonable surface use by the Department of Natural Resources, its Offices or Commissions, as herein above reserved.

Applicant: IHDW PETROLEUM COMPANY

Bidder	Cash Payment	Price/Acre	Rental	Oil	Gas	Other

Legend

06120032



06120032water



Active_Leases



DOQQ2004



T16S - R22E

LAFOURCHE PARISH

LAKE SALVADOR

T16S - R21E

P.O.B.

SL 18468

TRACT 38770 - Lafourche Parish, Louisiana

All of the lands now or formerly constituting the beds and bottoms of all water bodies of every nature and description the title of which vests in the State of Louisiana, together with all islands arising therein and other lands formed by accretion or by reliction, where allowed by law, excepting tax adjudicated lands, and not presently under mineral lease and cross hatched on December 13, 2006, situated in Lafourche Parish, Louisiana, and more particularly described as follows: Beginning at a point on the East boundary of State Lease No. 18468 having Coordinates of X = 2,334,493.95 and Y = 364,036.00; thence East 18,391.05 feet to a point having Coordinates of X = 2,352,885.00 and Y = 364,036.00; thence South 6,778.00 feet to a point having Coordinates of X = 2,352,885.00 and Y = 357,258.00; thence West 18,278.00 feet to the Southeast corner of State Lease No. 18472 having Coordinates of X = 2,334,607.00 and Y = 357,258.00; thence North 00 degrees 57 minutes 20 seconds West 5,984.83 feet along the East boundary of said State Lease No. 18472 to its Northeast corner, also being the Southeast corner of said State Lease No. 18468 having Coordinates of X = 2,334,507.19 and Y = 363,242.00; thence North 00 degrees 57 minutes 20 seconds West 794.11 feet along the East boundary of said State Lease No. 18468 to the point of beginning, containing approximately **487 acres**, all as more particularly outlined on a plat on file in the Office of Mineral Resources, Department of Natural Resources. All bearings, distances and coordinates are based on Louisiana Coordinate System of 1927, (North or South Zone), where applicable.

NOTE: The above description of the Tract nominated for lease has been provided and corrected, where required, exclusively by the nomination party. Any mineral lease selected from this Tract and awarded by the Louisiana State Mineral Board shall be without warranty of any kind, either express, implied, or statutory, including, but not limited to, the implied warranties of merchantability and fitness for a particular purpose. Should the mineral lease awarded by the Louisiana State Mineral Board be subsequently modified, cancelled or abrogated due to the existence of conflicting leases, operating agreements, private claims or other future obligations or conditions which may affect all or any portion of the leased Tract, it shall not relieve the Lessee of the obligation to pay any bonus due thereon to the Louisiana State Mineral Board, nor shall the Louisiana State Mineral Board be obligated to refund any consideration paid by the Lessor prior to such modification, cancellation, or abrogation, including, but not limited to, bonuses, rentals and royalties.

NOTE: The State of Louisiana does hereby reserve, and this lease shall be subject to, the imprescriptible right of surface use in the nature of a servitude in favor of the Department of Natural Resources, including its Offices and Commissions, for the sole purpose of implementing, constructing, servicing and maintaining approved coastal zone management and/or restoration projects. Utilization of any and all rights derived under this lease by the mineral lessee, its agents, successors or assigns, shall not interfere with nor hinder the reasonable surface use by the

Department of Natural Resources, its Offices or Commissions, as herein above reserved.

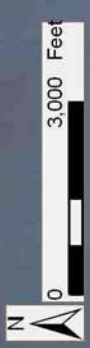
Applicant: IHDW PETROLEUM COMPANY

Bidder	Cash Payment	Price/Acre	Rental	Oil	Gas	Other

Legend

- 06120037
- 06120037/water
- Active_Leases

DOQQ2004



LAFOURCHE PARISH

LAKE SALVADOR

P.O.B.

SL 18468

SL 18472

T16S - R22E

T17S - R22E



TRACT 38771 - Portion of Block 24, Main Pass Area, Revised, Plaquemines Parish, Louisiana

All of the lands now or formerly constituting the beds and bottoms of all water bodies of every nature and description the title of which vests in the State of Louisiana, together with all islands arising therein and other lands formed by accretion or by reliction, where allowed by law, excepting tax adjudicated lands, and not presently under mineral lease and cross hatched on December 13, 2006, situated in Plaquemines Parish, Louisiana, and more particularly described as follows: Beginning at a point having Coordinates of X = 2,581,693.00 and Y = 306,340.47; thence North approximately 6,467 feet to a point said to be on the South boundary line of State Lease No. 195 having a Coordinate of X = 2,581,693.00; thence Easterly along the South boundary line of said State Lease No. 195 approximately 12,017 feet to a point said to be the Southeast corner of said State Lease No. 195 and also said to be a point on the West boundary line of Tract No. 38628; thence Southerly along the West boundary line of Tract No. 38628 approximately 5,565 feet to a point said to be the Southwest corner of said Tract No. 38628 and having a Coordinate of Y = 307,580.00; thence Southerly approximately 427 feet along the West boundary of Tract No. 38629 to a point; thence Southeasterly approximately 1,163 feet along the West boundary line of said Tract No. 38629 to a point having a Coordinate of Y = 306,340.47; thence West approximately 12,958 feet to the Point of Beginning, **LESS AND EXCEPT** any portion of the above described tract which may lie within State Lease No. 195, containing approximately **1,848 acres**, all as more particularly outlined on a plat on file in the Office of Mineral Resources, Department of Natural Resources. All bearings, distances and coordinates are based on Louisiana Coordinate System of 1927, (North or South Zone), where applicable.

NOTE: The above description of the Tract nominated for lease has been provided and corrected, where required, exclusively by the nomination party. Any mineral lease selected from this Tract and awarded by the Louisiana State Mineral Board shall be without warranty of any kind, either express, implied, or statutory, including, but not limited to, the implied warranties of merchantability and fitness for a particular purpose. Should the mineral lease awarded by the Louisiana State Mineral Board be subsequently modified, cancelled or abrogated due to the existence of conflicting leases, operating agreements, private claims or other future obligations or conditions which may affect all or any portion of the leased Tract, it shall not relieve the Lessee of the obligation to pay any bonus due thereon to the Louisiana State Mineral Board, nor shall the Louisiana State Mineral Board be obligated to refund any consideration paid by the Lessor prior to such modification, cancellation, or abrogation, including, but not limited to, bonuses, rentals and royalties.

NOTE: The State of Louisiana does hereby reserve, and this lease shall be subject to, the imprescriptible right of surface use in the nature of a servitude in favor of the Department of Natural Resources, including its Offices and Commissions, for the sole purpose of implementing,





constructing, servicing and maintaining approved coastal zone management and/or restoration projects. Utilization of any and all rights derived under this lease by the mineral lessee, its agents, successors or assigns, shall not interfere with nor hinder the reasonable surface use by the Department of Natural Resources, its Offices or Commissions, as herein above reserved.

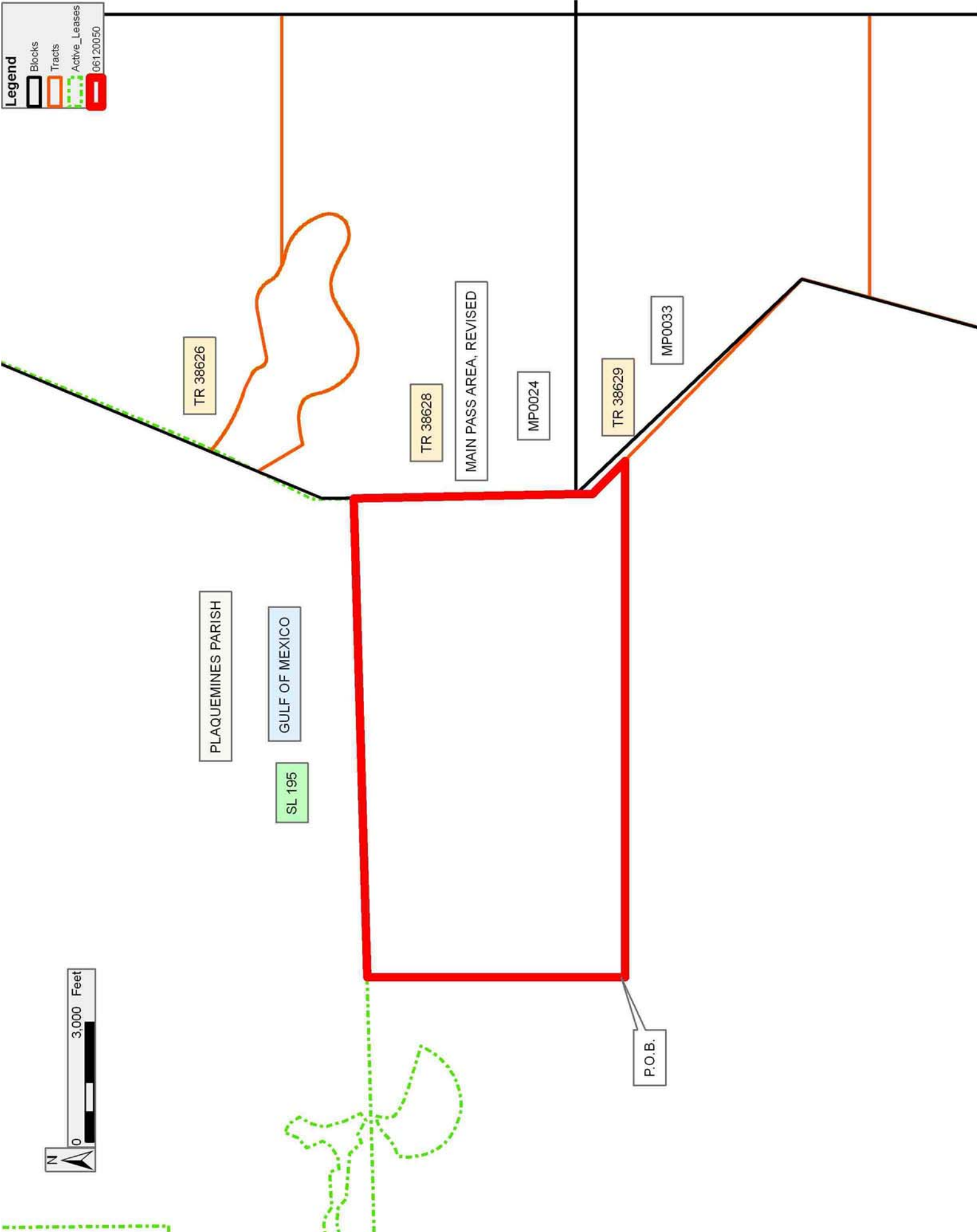
NOTE: The Department of Wildlife and Fisheries has designated certain areas in the coastal waters of the State of Louisiana as Oyster Seed Bed Areas. The exact location of those Seed Bed Areas must be obtained from the Department of Wildlife and Fisheries and any work done under a mineral lease from the State of Louisiana may necessarily be conducted in conformity with the rules and regulations promulgated by the said Department of Wildlife and Fisheries for Oyster Seed Bed Areas.

Applicant: CRAIG S. CHARBONNET, INC.

Bidder	Cash Payment	Price/Acre	Rental	Oil	Gas	Other

Legend

-  Blocks
-  Tracts
-  Active_Leases
-  061.20050



TRACT 38772 - Plaquemines Parish, Louisiana

All of the lands now or formerly constituting the beds and bottoms of all water bodies of every nature and description the title of which vests in the State of Louisiana, together with all islands arising therein and other lands formed by accretion or by reliction, where allowed by law, excepting tax adjudicated lands, and not presently under mineral lease and cross hatched on December 13, 2006, situated in Plaquemines Parish, Louisiana, and more particularly described as follows: Beginning at a point having Coordinates of X = 2,572,693.00 and Y = 302,473.46; thence North approximately 10,085 feet to a point said to be on the South boundary line of State Lease No. 195 having a coordinate of X = 2,572,693.00; thence Easterly approximately 9,003 feet along the South boundary line of said State Lease No. 195 to a point said to be on the South boundary line of said State Lease No. 195; thence South approximately 10,334 feet to a point having Coordinates of X = 2,581,693.00 and Y = 302,473.46; thence West 9,000.00 feet to the Point of Beginning, **LESS AND EXCEPT** any portion of State Lease No. 195 that may lie within the above described tract, **ALSO LESS AND EXCEPT** any portion of State Lease No. 17620 that may lie within the above described tract, described as follows: Beginning at a point on the boundary of the production unit identified as the 9800 feet ZONE RA SUA created by the Louisiana Office of Conservation Order No. 1472 for Pelican Point Field having Coordinates of X = 2,578,215.00 and Y = 312,595.00; thence along the boundary of said 9800 feet ZONE RA SUA the following courses: South 09 degrees 27 minutes 44 seconds West 212.90 feet to a point having Coordinates of X = 2,578,180.00 and Y = 312,385.00; South 06 degrees 34 minutes 55 seconds West 130.86 feet to a point having Coordinates of X = 2,578,165.00 and Y = 312,255.00; South 23 degrees 11 minutes 55 seconds East 114.24 feet to a point having Coordinates of X = 2,578,210.00 and Y = 312,150.00; South 42 degrees 42 minutes 34 seconds East 88.46 feet to a point having Coordinates of X = 2,578,270.00 and Y = 312,085.00; South 53 degrees 28 minutes 16 seconds East 168.00 feet to a point having Coordinates of X = 2,578,405.00 and Y = 311,985.00; South 64 degrees 35 minutes 32 seconds East 221.42 feet to a point having Coordinates of X = 2,578,605.00 and Y = 311,890.00; South 70 degrees 38 minutes 28 seconds East 392.17 feet to a point having Coordinates of X = 2,578,975.00 and Y = 311,760.00; South 72 degrees 57 minutes 29 seconds East 1,040.70 feet to a point having Coordinates of X = 2,579,970.00 and Y = 311,455.00; South 30 degrees 32 minutes 51 seconds West 354.15 feet to a point having Coordinates of X = 2,579,790.00 and Y = 311,150.00; South 39 degrees 08 minutes 38 seconds West 277.22 feet to a point having Coordinates of X = 2,579,615.00 and Y = 310,935.00; South 48 degrees 21 minutes 59 seconds West 240.83 feet to a point having Coordinates of X = 2,579,435.00 and Y = 310,775.00; South 56 degrees 39 minutes 33 seconds West 227.43 feet to a point having Coordinates of X = 2,579,245.00 and Y = 310,650.00; South 63 degrees 26 minutes 06 seconds West 212.43 feet to a point having Coordinates of X = 2,579,055.00 and Y = 310,555.00; South 71 degrees 57 minutes 57 seconds West 226.11 feet to a point having Coordinates of X = 2,578,840.00 and Y = 310,485.00; South 81 degrees 15 minutes 14 seconds

West 197.29 feet to a point having Coordinates of X = 2,578,645.00 and Y = 310,455.00; North 88 degrees 51 minutes 15 seconds West 250.05 feet to a point having Coordinates of X = 2,578,395.00 and Y = 310,460.00; North 77 degrees 44 minutes 07 seconds West 235.37 feet to a point having Coordinates of X = 2,578,165.00 and Y = 310,510.00; North 70 degrees 06 minutes 53 seconds West 249.90 feet to a point having Coordinates of X = 2,577,930.00 and Y = 310,595.00; North 60 degrees 07 minutes 26 seconds West 271.02 feet to a point having Coordinates of X = 2,577,695.00 and Y = 310,730.00; North 50 degrees 31 minutes 39 seconds West 220.23 feet to a point having Coordinates of X = 2,577,525.00 and Y = 310,870.00; North 37 degrees 34 minutes 07 seconds West 246.02 feet to a point having Coordinates of X = 2,577,375.00 and Y = 311,065.00; North 27 degrees 45 minutes 31 seconds West 214.71 feet to a point having Coordinates of X = 2,577,275.00 and Y = 311,255.00; North 15 degrees 56 minutes 43 seconds West 218.40 feet to a point having Coordinates of X = 2,577,215.00 and Y = 311,465.00; North 05 degrees 35 minutes 58 seconds West 256.22 feet to a point having Coordinates of X = 2,577,190.00 and Y = 311,720.00; North 01 degrees 32 minutes 53 seconds East 185.07 feet to a point having Coordinates of X = 2,577,195.00 and Y = 311,905.00; North 08 degrees 07 minutes 48 seconds East 141.42 feet to a point having Coordinates of X = 2,577,215.00 and Y = 312,045.00; North 71 degrees 33 minutes 54 seconds East 142.30 feet to a point having Coordinates of X = 2,577,350.00 and Y = 312,090.00; North 62 degrees 44 minutes 41 seconds East 185.61 feet to a point having Coordinates of X = 2,577,515.00 and Y = 312,175.00; North 54 degrees 41 minutes 20 seconds East 147.05 feet to a point having Coordinates of X = 2,577,635.00 and Y = 312,260.00; North 45 degrees 00 minutes 00 seconds East 197.99 feet to a point having Coordinates of X = 2,577,775.00 and Y = 312,400.00; North 54 degrees 27 minutes 44 seconds East 86.02 feet to a point having Coordinates of X = 2,577,845.00 and Y = 312,450.00; North 60 degrees 15 minutes 18 seconds East 120.93 feet to a point having Coordinates of X = 2,577,950.00 and Y = 312,510.00; North 68 degrees 37 minutes 46 seconds East 123.49 feet to a point having Coordinates of X = 2,578,065.00 and Y = 312,555.00; and North 75 degrees 04 minutes 03 seconds East 155.24 feet, containing approximately **2,032 acres**, all as more particularly outlined on a plat on file in the Office of Mineral Resources, Department of Natural Resources. All bearings, distances and coordinates are based on Louisiana Coordinate System of 1927, (North or South Zone), where applicable.

NOTE: The above description of the Tract nominated for lease has been provided and corrected, where required, exclusively by the nomination party. Any mineral lease selected from this Tract and awarded by the Louisiana State Mineral Board shall be without warranty of any kind, either express, implied, or statutory, including, but not limited to, the implied warranties of merchantability and fitness for a particular purpose. Should the mineral lease awarded by the Louisiana State Mineral Board be subsequently modified, cancelled or abrogated due to the existence of conflicting leases, operating agreements, private claims or other future obligations or conditions which may affect all or any portion

of the leased Tract, it shall not relieve the Lessee of the obligation to pay any bonus due thereon to the Louisiana State Mineral Board, nor shall the Louisiana State Mineral Board be obligated to refund any consideration paid by the Lessor prior to such modification, cancellation, or abrogation, including, but not limited to, bonuses, rentals and royalties.




NOTE: The State of Louisiana does hereby reserve, and this lease shall be subject to, the imprescriptible right of surface use in the nature of a servitude in favor of the Department of Natural Resources, including its Offices and Commissions, for the sole purpose of implementing, constructing, servicing and maintaining approved coastal zone management and/or restoration projects. Utilization of any and all rights derived under this lease by the mineral lessee, its agents, successors or assigns, shall not interfere with nor hinder the reasonable surface use by the Department of Natural Resources, its Offices or Commissions, as herein above reserved.

NOTE: The Department of Wildlife and Fisheries has designated certain areas in the coastal waters of the State of Louisiana as Oyster Seed Bed Areas. The exact location of those Seed Bed Areas must be obtained from the Department of Wildlife and Fisheries and any work done under a mineral lease from the State of Louisiana may necessarily be conducted in conformity with the rules and regulations promulgated by the said Department of Wildlife and Fisheries for Oyster Seed Bed Areas.

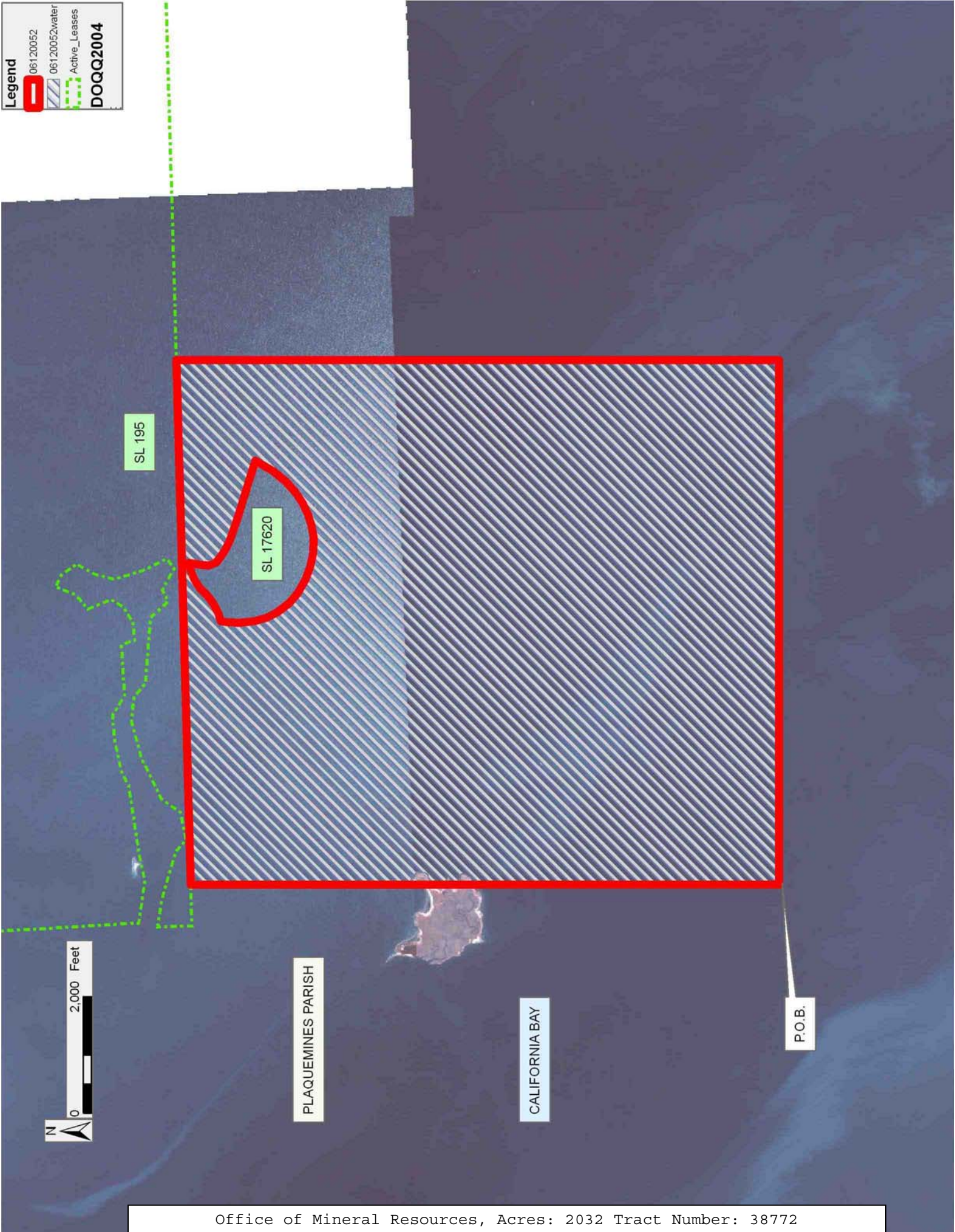
Applicant: CRAIG S. CHARBONNET, INC.

Bidder	Cash Payment	Price/Acre	Rental	Oil	Gas	Other

Legend

-  06120052
-  06120052water
-  Active_Leases

DOQQ2004



SL 195

SL 17620

PLAQUEMINES PARISH

CALIFORNIA BAY

P.O.B.