

TRACT 38753 - Acadia and Jefferson Davis Parishes, Louisiana

All of the lands now or formerly constituting the beds and bottoms of all water bodies of every nature and description the title of which vests in the State of Louisiana, together with all islands arising therein and other lands formed by accretion or by reliction, where allowed by law, excepting tax adjudicated lands, and not presently under mineral lease and cross hatched on December 13, 2006, situated in Acadia and Jefferson Davis Parishes, Louisiana, and more particularly described as follows: Beginning at a point having Coordinates of X = 1,606,449.75 and Y = 562,918.43; thence South 00 degrees 01 minutes 32 seconds West 3,734.28 feet to a point having Coordinates of X = 1,606,448.09 and Y = 559,184.15; thence North 89 degrees 49 minutes 19 seconds West 8,426.47 feet to a point having Coordinates of X = 1,598,021.66 and Y = 559,210.33; thence North 00 degrees 01 minutes 32 seconds East 2,091.78 feet to a point having Coordinates of X = 1,598,022.59 and Y = 561,302.11; thence North 00 degrees 00 minutes 18 seconds East 1,642.50 feet to a point having Coordinates of X = 1,598,022.73 and Y = 562,944.61; thence South 89 degrees 49 minutes 19 seconds East 8,427.06 feet to the point of beginning, containing approximately **115 acres**, all as more particularly outlined on a plat on file in the Office of Mineral Resources, Department of Natural Resources. All bearings, distances and coordinates are based on Louisiana Coordinate System of 1927, (North or South Zone), where applicable.

NOTE: The above description of the Tract nominated for lease has been provided and corrected, where required, exclusively by the nomination party. Any mineral lease selected from this Tract and awarded by the Louisiana State Mineral Board shall be without warranty of any kind, either express, implied, or statutory, including, but not limited to, the implied warranties of merchantability and fitness for a particular purpose. Should the mineral lease awarded by the Louisiana State Mineral Board be subsequently modified, cancelled or abrogated due to the existence of conflicting leases, operating agreements, private claims or other future obligations or conditions which may affect all or any portion of the leased Tract, it shall not relieve the Lessee of the obligation to pay any bonus due thereon to the Louisiana State Mineral Board, nor shall the Louisiana State Mineral Board be obligated to refund any consideration paid by the Lessor prior to such modification, cancellation, or abrogation, including, but not limited to, bonuses, rentals and royalties.

Bidder	Cash Payment	Price/Acre	Rental	Oil	Gas	Other

Applicant: THEOPHILUS OIL GAS & LAND SERVICES LLC

Legend

- 06120078
- 06120078water
- Counties
- DOOO2004



JEFFERSON DAVIS
PARISH

ACADIA PARISH

T10S - R2W

BAYOU NEZPIQUE

BAYOU PLAQUEMINE BRULE

P.O.B.

MERMENTAU RIVER

TRACT 38754 - Acadia and Jefferson Davis Parishes, Louisiana

All of the lands now or formerly constituting the beds and bottoms of all water bodies of every nature and description the title of which vests in the State of Louisiana, together with all islands arising therein and other lands formed by accretion or by reliction, where allowed by law, excepting tax adjudicated lands, and not presently under mineral lease and cross hatched on December 13, 2006, situated in Acadia and Jefferson Davis Parishes, Louisiana, and more particularly described as follows: Beginning at a point having Coordinates of X = 1,604,036.12 and Y = 554,474.90; thence West 447.76 feet to the Northeast corner of State Lease No. 18060 having Coordinates of X = 1,603,588.36 and Y = 554,474.90; thence West 3,312.67 feet along the North boundary of said State Lease No. 18060 to a point having Coordinates of X = 1,600,275.69 and Y = 554,474.90; thence North 4,728.42 feet to a point having Coordinates of X = 1,600,275.69 and Y = 559,203.32; thence South 89 degrees 49 minutes 19 seconds East 3,760.46 feet to a point having Coordinates of X = 1,604,036.12 and Y = 559,191.64; thence South 4,716.74 feet to the point of beginning, containing approximately **58 acres**, all as more particularly outlined on a plat on file in the Office of Mineral Resources, Department of Natural Resources. All bearings, distances and coordinates are based on Louisiana Coordinate System of 1927, (North or South Zone), where applicable.

NOTE: The above description of the Tract nominated for lease has been provided and corrected, where required, exclusively by the nomination party. Any mineral lease selected from this Tract and awarded by the Louisiana State Mineral Board shall be without warranty of any kind, either express, implied, or statutory, including, but not limited to, the implied warranties of merchantability and fitness for a particular purpose. Should the mineral lease awarded by the Louisiana State Mineral Board be subsequently modified, cancelled or abrogated due to the existence of conflicting leases, operating agreements, private claims or other future obligations or conditions which may affect all or any portion of the leased Tract, it shall not relieve the Lessee of the obligation to pay any bonus due thereon to the Louisiana State Mineral Board, nor shall the Louisiana State Mineral Board be obligated to refund any consideration paid by the Lessor prior to such modification, cancellation, or abrogation, including, but not limited to, bonuses, rentals and royalties.

Bidder	Cash Payment	Price/Acre	Rental	Oil	Gas	Other

Applicant: THEOPHILUS OIL GAS & LAND SERVICES LLC

Legend

-  06120079
-  06120079water
-  Active_Leases
-  Counties

DOQQ2004



ACADIA PARISH

P.O.B.

MERMENTAU RIVER



SL 18060

JEFFERSON DAVIS PARISH

T10S - R2W

TRACT 38755 - Acadia and Jefferson Davis Parishes, Louisiana

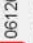
All of the lands now or formerly constituting the beds and bottoms of all water bodies of every nature and description the title of which vests in the State of Louisiana, together with all islands arising therein and other lands formed by accretion or by reliction, where allowed by law, excepting tax adjudicated lands, and not presently under mineral lease and cross hatched on December 13, 2006, situated in Acadia and Jefferson Davis Parishes, Louisiana, and more particularly described as follows: Beginning at a point having Coordinates of X = 1,591,850.89 and Y = 552,785.23; thence East 5,107.65 feet to a point on the West boundary of State Lease No. 18060 having Coordinates of X = 1,596,958.54 and Y = 552,785.23; thence along the boundary of said State Lease No. 18060 the following courses: South 25 degrees 59 minutes 10 seconds West 2,619.13 feet to a point having Coordinates of X = 1,595,810.96 and Y = 550,430.89 and East 4,464.70 feet to a point having Coordinates of X = 1,600,275.66 and Y = 550,430.89; thence South 1,406.11 feet to a point having Coordinates of X = 1,600,275.66 and Y = 549,024.78; thence West 8,424.77 feet to a point having Coordinates of X = 1,591,850.89 and Y = 549,024.78; thence North 3,760.46 feet to the point of beginning, containing approximately **53 acres**, all as more particularly outlined on a plat on file in the Office of Mineral Resources, Department of Natural Resources. All bearings, distances and coordinates are based on Louisiana Coordinate System of 1927, (North or South Zone), where applicable.

NOTE: The above description of the Tract nominated for lease has been provided and corrected, where required, exclusively by the nomination party. Any mineral lease selected from this Tract and awarded by the Louisiana State Mineral Board shall be without warranty of any kind, either express, implied, or statutory, including, but not limited to, the implied warranties of merchantability and fitness for a particular purpose. Should the mineral lease awarded by the Louisiana State Mineral Board be subsequently modified, cancelled or abrogated due to the existence of conflicting leases, operating agreements, private claims or other future obligations or conditions which may affect all or any portion of the leased Tract, it shall not relieve the Lessee of the obligation to pay any bonus due thereon to the Louisiana State Mineral Board, nor shall the Louisiana State Mineral Board be obligated to refund any consideration paid by the Lessor prior to such modification, cancellation, or abrogation, including, but not limited to, bonuses, rentals and royalties.

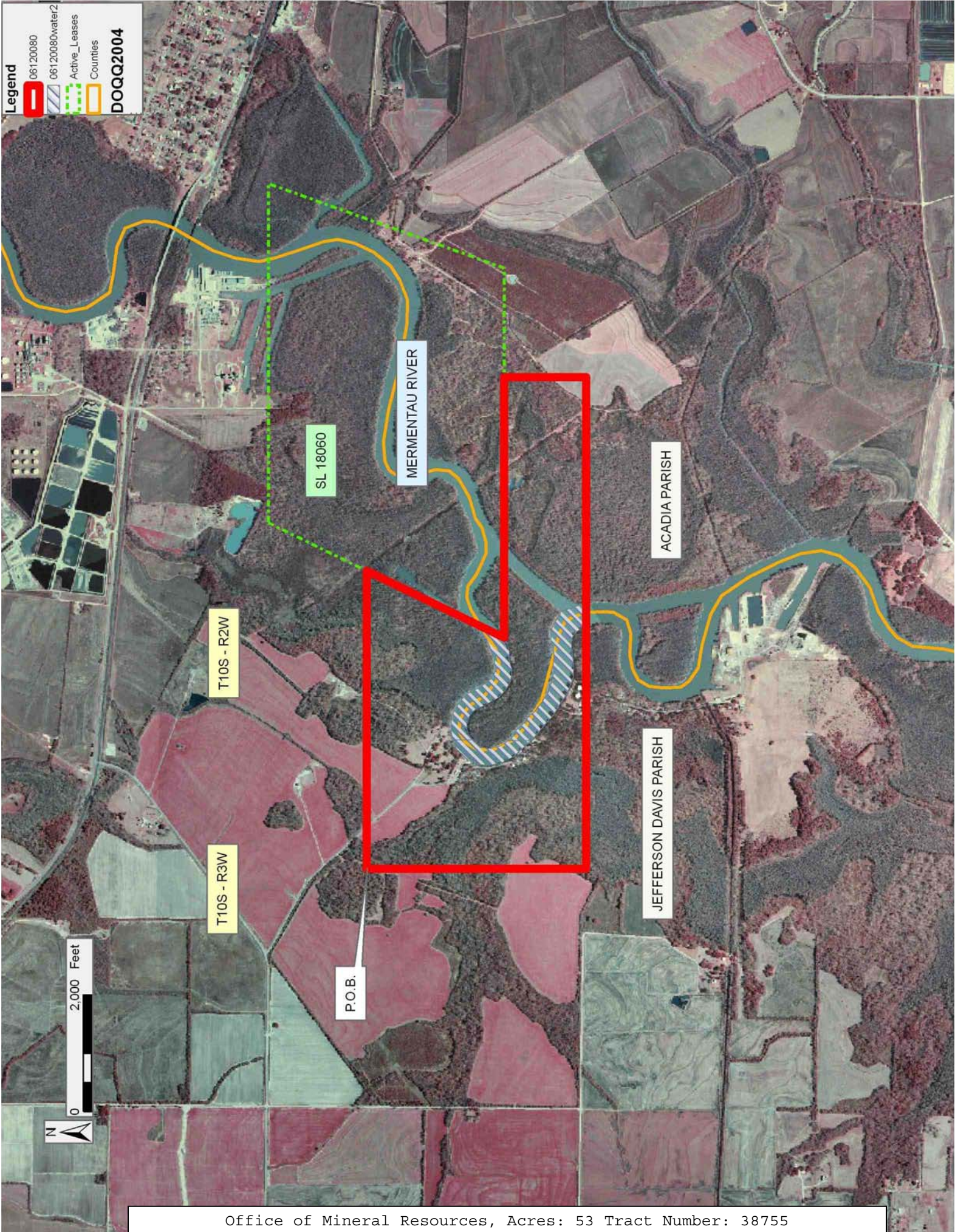
Applicant: THEOPHILUS OIL GAS & LAND SERVICES LLC

Bidder	Cash Payment	Price/Acre	Rental	Oil	Gas	Other

Legend

-  06120080
-  06120080.water2
-  Active_Leases
-  Counties

DOQQ2004



SL 18060

MERMENTAU RIVER

ACADIA PARISH

T10S - R2W

T10S - R3W

JEFFERSON DAVIS PARISH

P.O.B.

2,000 Feet



TRACT 38756 - St. James Parish, Louisiana

All of the lands now or formerly constituting the beds and bottoms of all water bodies of every nature and description the title of which vests in the State of Louisiana, together with all islands arising therein and other lands formed by accretion or by reliction, where allowed by law, excepting tax adjudicated lands, and not presently under mineral lease and cross hatched on December 13, 2006, situated in St. James Parish, Louisiana, and more particularly described as follows: Beginning at a point having Coordinates of X = 2,131,736.00 and Y = 518,100.00; thence North 11 degrees 02 minutes 44 seconds West 4,788.71 feet to a point having Coordinates of X = 2,130,818.53 and Y = 522,800.00; thence East 3,825.67 feet to a point having Coordinates of X = 2,134,644.20 and Y = 522,800.00; thence South 09 degrees 42 minutes 14 seconds East 4,768.22 feet to a point having Coordinates of X = 2,135,447.92 and Y = 518,100.00; thence West 3,711.92 feet to the point of beginning, containing approximately **250 acres**, all as more particularly outlined on a plat on file in the Office of Mineral Resources, Department of Natural Resources. All bearings, distances and coordinates are based on Louisiana Coordinate System of 1927, (North or South Zone), where applicable.

NOTE: The above description of the Tract nominated for lease has been provided and corrected, where required, exclusively by the nomination party. Any mineral lease selected from this Tract and awarded by the Louisiana State Mineral Board shall be without warranty of any kind, either express, implied, or statutory, including, but not limited to, the implied warranties of merchantability and fitness for a particular purpose. Should the mineral lease awarded by the Louisiana State Mineral Board be subsequently modified, cancelled or abrogated due to the existence of conflicting leases, operating agreements, private claims or other future obligations or conditions which may affect all or any portion of the leased Tract, it shall not relieve the Lessee of the obligation to pay any bonus due thereon to the Louisiana State Mineral Board, nor shall the Louisiana State Mineral Board be obligated to refund any consideration paid by the Lessor prior to such modification, cancellation, or abrogation, including, but not limited to, bonuses, rentals and royalties.

NOTE: The State of Louisiana does hereby reserve, and this lease shall be subject to, the imprescriptible right of surface use in the nature of a servitude in favor of the Department of Natural Resources, including its Offices and Commissions, for the sole purpose of implementing, constructing, servicing and maintaining approved coastal zone management and/or restoration projects. Utilization of any and all rights derived under this lease by the mineral lessee, its agents, successors or assigns, shall not interfere with nor hinder the reasonable surface use by the Department of Natural Resources, its Offices or Commissions, as herein above reserved.

Applicant: AUDUBON OIL AND GAS CORPORATION

Bidder	Cash Payment	Price/Acre	Rental	Oil	Gas	Other

Legend

06120009

06120009water

DOQQ2004

ST JAMES PARISH

MISSISSIPPI RIVER

P.O.B.

2,000 Feet



TRACT 38757 - St. James Parish, Louisiana

All of the lands now or formerly constituting the beds and bottoms of all water bodies of every nature and description the title of which vests in the State of Louisiana, together with all islands arising therein and other lands formed by accretion or by reliction, where allowed by law, excepting tax adjudicated lands, and not presently under mineral lease and cross hatched on December 13, 2006, situated in St. James Parish, Louisiana, and more particularly described as follows: Beginning at a point having Coordinates of X = 2,132,712.82 and Y = 513,400.00; thence North 11 degrees 44 minutes 27 seconds West 4,800.44 feet to a point having Coordinates of X = 2,131,736.00 and Y = 518,100.00; thence East 3,711.92 feet to a point having Coordinates of X = 2,135,447.92 and Y = 518,100.00; thence South 21 degrees 07 minutes 56 seconds East 5,038.86 feet to a point having Coordinates of X = 2,137,264.54 and Y = 513,400.00; thence West 4,551.71 feet to the point of beginning, containing approximately **253 acres**, all as more particularly outlined on a plat on file in the Office of Mineral Resources, Department of Natural Resources. All bearings, distances and coordinates are based on Louisiana Coordinate System of 1927, (North or South Zone), where applicable.

NOTE: The above description of the Tract nominated for lease has been provided and corrected, where required, exclusively by the nomination party. Any mineral lease selected from this Tract and awarded by the Louisiana State Mineral Board shall be without warranty of any kind, either express, implied, or statutory, including, but not limited to, the implied warranties of merchantability and fitness for a particular purpose. Should the mineral lease awarded by the Louisiana State Mineral Board be subsequently modified, cancelled or abrogated due to the existence of conflicting leases, operating agreements, private claims or other future obligations or conditions which may affect all or any portion of the leased Tract, it shall not relieve the Lessee of the obligation to pay any bonus due thereon to the Louisiana State Mineral Board, nor shall the Louisiana State Mineral Board be obligated to refund any consideration paid by the Lessor prior to such modification, cancellation, or abrogation, including, but not limited to, bonuses, rentals and royalties.

NOTE: The State of Louisiana does hereby reserve, and this lease shall be subject to, the imprescriptible right of surface use in the nature of a servitude in favor of the Department of Natural Resources, including its Offices and Commissions, for the sole purpose of implementing, constructing, servicing and maintaining approved coastal zone management and/or restoration projects. Utilization of any and all rights derived under this lease by the mineral lessee, its agents, successors or assigns, shall not interfere with nor hinder the reasonable surface use by the Department of Natural Resources, its Offices or Commissions, as herein above reserved.

Applicant: AUDUBON OIL AND GAS CORPORATION

Bidder	Cash Payment	Price/Acre	Rental	Oil	Gas	Other

Legend

- 06120010
- 06120010water
- DOQQ2004

ST JAMES PARISH

MISSISSIPPI RIVER

P.O.B.

2,000 Feet



TRACT 38758 - St. James Parish, Louisiana

All of the lands now or formerly constituting the beds and bottoms of all water bodies of every nature and description the title of which vests in the State of Louisiana, together with all islands arising therein and other lands formed by accretion or by reliction, where allowed by law, excepting tax adjudicated lands, and not presently under mineral lease and cross hatched on December 13, 2006, situated in St. James Parish, Louisiana, and more particularly described as follows: Beginning at a point having Coordinates of X = 2,132,712.82 and Y = 513,400.00; thence East 4,551.71 feet to a point having Coordinates of X = 2,137,264.54 and Y = 513,400.00; thence South 36 degrees 54 minutes 30 seconds East 4,256.90 feet to a point having Coordinates of X = 2,139,820.96 and Y = 509,996.19; thence South 65 degrees 28 minutes 47 seconds West 4,670.12 feet to a point having Coordinates of X = 2,135,572.01 and Y = 508,058.01; thence North 28 degrees 09 minutes 25 seconds West 6,059.03 feet to the point of beginning, containing approximately **295 acres**, all as more particularly outlined on a plat on file in the Office of Mineral Resources, Department of Natural Resources. All bearings, distances and coordinates are based on Louisiana Coordinate System of 1927, (North or South Zone), where applicable.

NOTE: The above description of the Tract nominated for lease has been provided and corrected, where required, exclusively by the nomination party. Any mineral lease selected from this Tract and awarded by the Louisiana State Mineral Board shall be without warranty of any kind, either express, implied, or statutory, including, but not limited to, the implied warranties of merchantability and fitness for a particular purpose. Should the mineral lease awarded by the Louisiana State Mineral Board be subsequently modified, cancelled or abrogated due to the existence of conflicting leases, operating agreements, private claims or other future obligations or conditions which may affect all or any portion of the leased Tract, it shall not relieve the Lessee of the obligation to pay any bonus due thereon to the Louisiana State Mineral Board, nor shall the Louisiana State Mineral Board be obligated to refund any consideration paid by the Lessor prior to such modification, cancellation, or abrogation, including, but not limited to, bonuses, rentals and royalties.

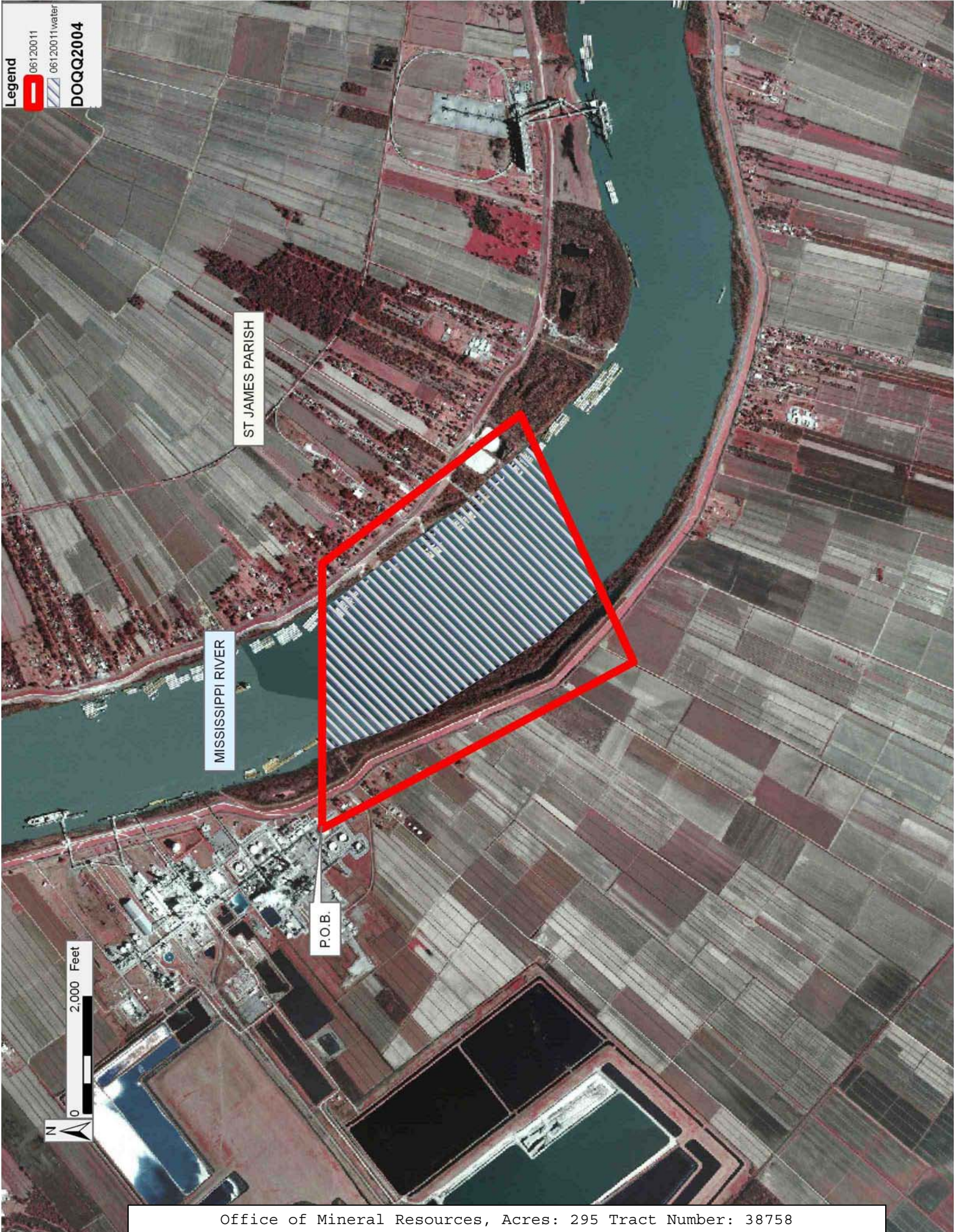
NOTE: The State of Louisiana does hereby reserve, and this lease shall be subject to, the imprescriptible right of surface use in the nature of a servitude in favor of the Department of Natural Resources, including its Offices and Commissions, for the sole purpose of implementing, constructing, servicing and maintaining approved coastal zone management and/or restoration projects. Utilization of any and all rights derived under this lease by the mineral lessee, its agents, successors or assigns, shall not interfere with nor hinder the reasonable surface use by the Department of Natural Resources, its Offices or Commissions, as herein above reserved.

Applicant: AUDUBON OIL AND GAS CORPORATION

Bidder	Cash Payment	Price/Acre	Rental	Oil	Gas	Other

Legend

- 06120011
- 06120011 water
- DOQQ2004



ST JAMES PARISH

MISSISSIPPI RIVER

P.O.B.

2,000 Feet

N

TRACT 38759 - St. James Parish, Louisiana

All of the lands now or formerly constituting the beds and bottoms of all water bodies of every nature and description the title of which vests in the State of Louisiana, together with all islands arising therein and other lands formed by accretion or by reliction, where allowed by law, excepting tax adjudicated lands, and not presently under mineral lease and cross hatched on December 13, 2006, situated in St. James Parish, Louisiana, and more particularly described as follows: Beginning at a point having Coordinates of X = 2,143,300.00 and Y = 504,986.29; thence North 68 degrees 19 minutes 23 seconds West 8,316.09 feet to a point having Coordinates of X = 2,135,572.01 and Y = 508,058.01; thence North 65 degrees 28 minutes 47 seconds East 4,670.12 feet to a point having Coordinates of X = 2,139,820.96 and Y = 509,996.19; thence South 75 degrees 25 minutes 18 seconds East 3,594.79 feet to a point having Coordinates of X = 2,143,300.00 and Y = 509,091.36; thence South 4,105.07 feet to the point of beginning, containing approximately **283 acres**, all as more particularly outlined on a plat on file in the Office of Mineral Resources, Department of Natural Resources. All bearings, distances and coordinates are based on Louisiana Coordinate System of 1927, (North or South Zone), where applicable.

NOTE: The above description of the Tract nominated for lease has been provided and corrected, where required, exclusively by the nomination party. Any mineral lease selected from this Tract and awarded by the Louisiana State Mineral Board shall be without warranty of any kind, either express, implied, or statutory, including, but not limited to, the implied warranties of merchantability and fitness for a particular purpose. Should the mineral lease awarded by the Louisiana State Mineral Board be subsequently modified, cancelled or abrogated due to the existence of conflicting leases, operating agreements, private claims or other future obligations or conditions which may affect all or any portion of the leased Tract, it shall not relieve the Lessee of the obligation to pay any bonus due thereon to the Louisiana State Mineral Board, nor shall the Louisiana State Mineral Board be obligated to refund any consideration paid by the Lessor prior to such modification, cancellation, or abrogation, including, but not limited to, bonuses, rentals and royalties.

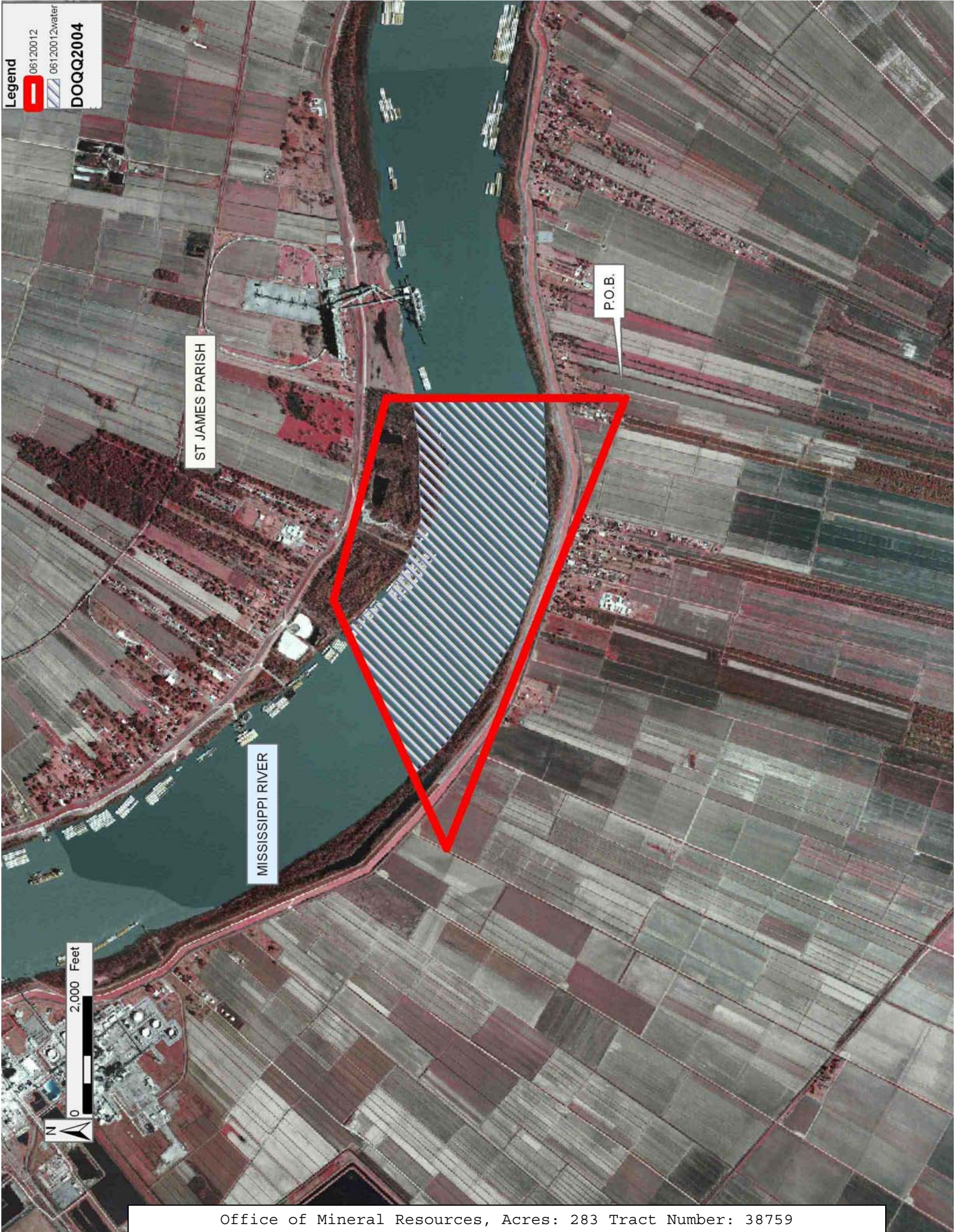
NOTE: The State of Louisiana does hereby reserve, and this lease shall be subject to, the imprescriptible right of surface use in the nature of a servitude in favor of the Department of Natural Resources, including its Offices and Commissions, for the sole purpose of implementing, constructing, servicing and maintaining approved coastal zone management and/or restoration projects. Utilization of any and all rights derived under this lease by the mineral lessee, its agents, successors or assigns, shall not interfere with nor hinder the reasonable surface use by the Department of Natural Resources, its Offices or Commissions, as herein above reserved.

Applicant: AUDUBON OIL AND GAS CORPORATION

Bidder	Cash Payment	Price/Acre	Rental	Oil	Gas	Other

Legend

- 06120012
- 06120012water
- DOQQ2004**



ST JAMES PARISH

MISSISSIPPI RIVER

P.O.B.

2,000 Feet

N

TRACT 38760 - St. James Parish, Louisiana

All of the lands now or formerly constituting the beds and bottoms of all water bodies of every nature and description the title of which vests in the State of Louisiana, together with all islands arising therein and other lands formed by accretion or by reliction, where allowed by law, excepting tax adjudicated lands, and not presently under mineral lease and cross hatched on December 13, 2006, situated in St. James Parish, Louisiana, and more particularly described as follows: Beginning at a point having Coordinates of X = 2,143,300.00 and Y = 504,986.29; thence North 4,105.07 feet to a point having Coordinates of X = 2,143,300.00 and Y = 509,091.36; thence North 80 degrees 51 minutes 01 seconds East 4,760.57 feet to a point having Coordinates of X = 2,148,000.00 and Y = 509,848.37; thence South 3,609.51 feet to a point having Coordinates of X = 2,148,000.00 and Y = 506,238.86; thence South 75 degrees 04 minutes 38 seconds West 4,864.04 feet to the point of beginning, containing approximately **221 acres**, all as more particularly outlined on a plat on file in the Office of Mineral Resources, Department of Natural Resources. All bearings, distances and coordinates are based on Louisiana Coordinate System of 1927, (North or South Zone), where applicable.

NOTE: The above description of the Tract nominated for lease has been provided and corrected, where required, exclusively by the nomination party. Any mineral lease selected from this Tract and awarded by the Louisiana State Mineral Board shall be without warranty of any kind, either express, implied, or statutory, including, but not limited to, the implied warranties of merchantability and fitness for a particular purpose. Should the mineral lease awarded by the Louisiana State Mineral Board be subsequently modified, cancelled or abrogated due to the existence of conflicting leases, operating agreements, private claims or other future obligations or conditions which may affect all or any portion of the leased Tract, it shall not relieve the Lessee of the obligation to pay any bonus due thereon to the Louisiana State Mineral Board, nor shall the Louisiana State Mineral Board be obligated to refund any consideration paid by the Lessor prior to such modification, cancellation, or abrogation, including, but not limited to, bonuses, rentals and royalties.

NOTE: The State of Louisiana does hereby reserve, and this lease shall be subject to, the imprescriptible right of surface use in the nature of a servitude in favor of the Department of Natural Resources, including its Offices and Commissions, for the sole purpose of implementing, constructing, servicing and maintaining approved coastal zone management and/or restoration projects. Utilization of any and all rights derived under this lease by the mineral lessee, its agents, successors or assigns, shall not interfere with nor hinder the reasonable surface use by the Department of Natural Resources, its Offices or Commissions, as herein above reserved.

Applicant: AUDUBON OIL AND GAS CORPORATION

Bidder	Cash Payment	Price/Acre	Rental	Oil	Gas	Other

Legend

- 06120013
- 06120013water
- DOQQ2004

ST JAMES PARISH

MISSISSIPPI RIVER

P.O.B.

2,000 Feet



TRACT 38761 - Jefferson and St. Charles Parishes, Louisiana

All of the lands now or formerly constituting the beds and bottoms of all water bodies of every nature and description the title of which vests in the State of Louisiana, together with all islands arising therein and other lands formed by accretion or by reliction, where allowed by law, excepting tax adjudicated lands, and not presently under mineral lease and cross hatched on December 13, 2006, situated in Jefferson and St. Charles Parishes, Louisiana, and more particularly described as follows: Beginning at a point having Coordinates of X = 2,352,885.00 and Y = 387,165.00; thence East 8,395.00 feet to a point having Coordinates of X = 2,361,280.00 and Y = 387,165.00; thence South 12,724.00 feet to a point having Coordinates of X = 2,361,280.00 and Y = 374,441.00; thence West 8,395.00 feet to a point having Coordinates of X = 2,352,885.00 and Y = 374,441.00; thence North 12,724.00 feet to the point of beginning, containing approximately **2,207 acres**, all as more particularly outlined on a plat on file in the Office of Mineral Resources, Department of Natural Resources. All bearings, distances and coordinates are based on Louisiana Coordinate System of 1927, (North or South Zone), where applicable.

NOTE: The above description of the Tract nominated for lease has been provided and corrected, where required, exclusively by the nomination party. Any mineral lease selected from this Tract and awarded by the Louisiana State Mineral Board shall be without warranty of any kind, either express, implied, or statutory, including, but not limited to, the implied warranties of merchantability and fitness for a particular purpose. Should the mineral lease awarded by the Louisiana State Mineral Board be subsequently modified, cancelled or abrogated due to the existence of conflicting leases, operating agreements, private claims or other future obligations or conditions which may affect all or any portion of the leased Tract, it shall not relieve the Lessee of the obligation to pay any bonus due thereon to the Louisiana State Mineral Board, nor shall the Louisiana State Mineral Board be obligated to refund any consideration paid by the Lessor prior to such modification, cancellation, or abrogation, including, but not limited to, bonuses, rentals and royalties.

NOTE: The State of Louisiana does hereby reserve, and this lease shall be subject to, the imprescriptible right of surface use in the nature of a servitude in favor of the Department of Natural Resources, including its Offices and Commissions, for the sole purpose of implementing, constructing, servicing and maintaining approved coastal zone management and/or restoration projects. Utilization of any and all rights derived under this lease by the mineral lessee, its agents, successors or assigns, shall not interfere with nor hinder the reasonable surface use by the Department of Natural Resources, its Offices or Commissions, as herein above reserved.

Applicant: IHDW PETROLEUM COMPANY

Bidder	Cash Payment	Price/Acre	Rental	Oil	Gas	Other

Legend

- 061200033
- 061200033water
- Counties
- DOQQ2004**



T15S - R22E

T16S - R22E

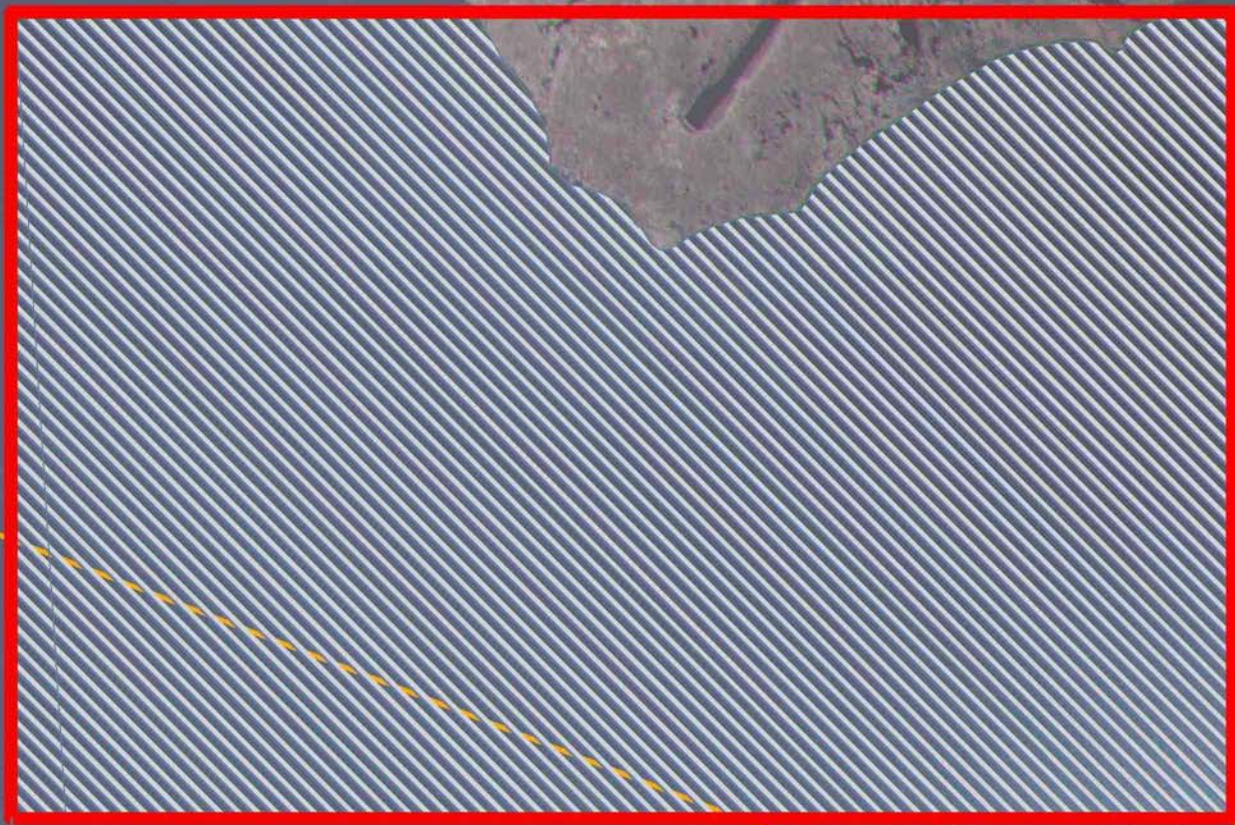
JEFFERSON PARISH

ST CHARLES PARISH

LAFOURCHE PARISH

P.O.B.

LAKE SALVADOR



TRACT 38762 - Jefferson Parish, Louisiana

All of the lands now or formerly constituting the beds and bottoms of all water bodies of every nature and description the title of which vests in the State of Louisiana, together with all islands arising therein and other lands formed by accretion or by reliction, where allowed by law, excepting tax adjudicated lands, and not presently under mineral lease and cross hatched on December 13, 2006, situated in Jefferson Parish, Louisiana, and more particularly described as follows: Beginning at a point having Coordinates of X = 2,361,280.00 and Y = 387,165.00; thence East 14,750.00 feet to a point having Coordinates of X = 2,376,030.00 and Y = 387,165.00; thence South 9,432.00 feet to a point having Coordinates of X = 2,376,030.00 and Y = 377,733.00; thence West 14,750.00 feet to a point having Coordinates of X = 2,361,280.00 and Y = 377,733.00; thence North 9,432.00 feet to the point of beginning, containing approximately **235 acres**, all as more particularly outlined on a plat on file in the Office of Mineral Resources, Department of Natural Resources. All bearings, distances and coordinates are based on Louisiana Coordinate System of 1927, (North or South Zone), where applicable.

NOTE: The above description of the Tract nominated for lease has been provided and corrected, where required, exclusively by the nomination party. Any mineral lease selected from this Tract and awarded by the Louisiana State Mineral Board shall be without warranty of any kind, either express, implied, or statutory, including, but not limited to, the implied warranties of merchantability and fitness for a particular purpose. Should the mineral lease awarded by the Louisiana State Mineral Board be subsequently modified, cancelled or abrogated due to the existence of conflicting leases, operating agreements, private claims or other future obligations or conditions which may affect all or any portion of the leased Tract, it shall not relieve the Lessee of the obligation to pay any bonus due thereon to the Louisiana State Mineral Board, nor shall the Louisiana State Mineral Board be obligated to refund any consideration paid by the Lessor prior to such modification, cancellation, or abrogation, including, but not limited to, bonuses, rentals and royalties.

NOTE: The State of Louisiana does hereby reserve, and this lease shall be subject to, the imprescriptible right of surface use in the nature of a servitude in favor of the Department of Natural Resources, including its Offices and Commissions, for the sole purpose of implementing, constructing, servicing and maintaining approved coastal zone management and/or restoration projects. Utilization of any and all rights derived under this lease by the mineral lessee, its agents, successors or assigns, shall not interfere with nor hinder the reasonable surface use by the Department of Natural Resources, its Offices or Commissions, as herein above reserved.

Applicant: IHDW PETROLEUM COMPANY

Bidder	Cash Payment	Price/Acre	Rental	Oil	Gas	Other

Legend

- 06120035
- 06120035water
- DOQQ2004**



JEFFERSON PARISH

P.O.B.

T15S - R23E

T16S - R23E

T15S - R22E

T16S - R22E

LAKE SALVADOR