

TRACT 38026 - Terrebonne Parish, Louisiana

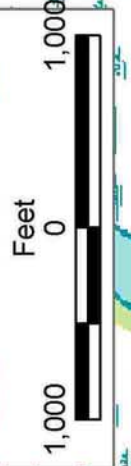
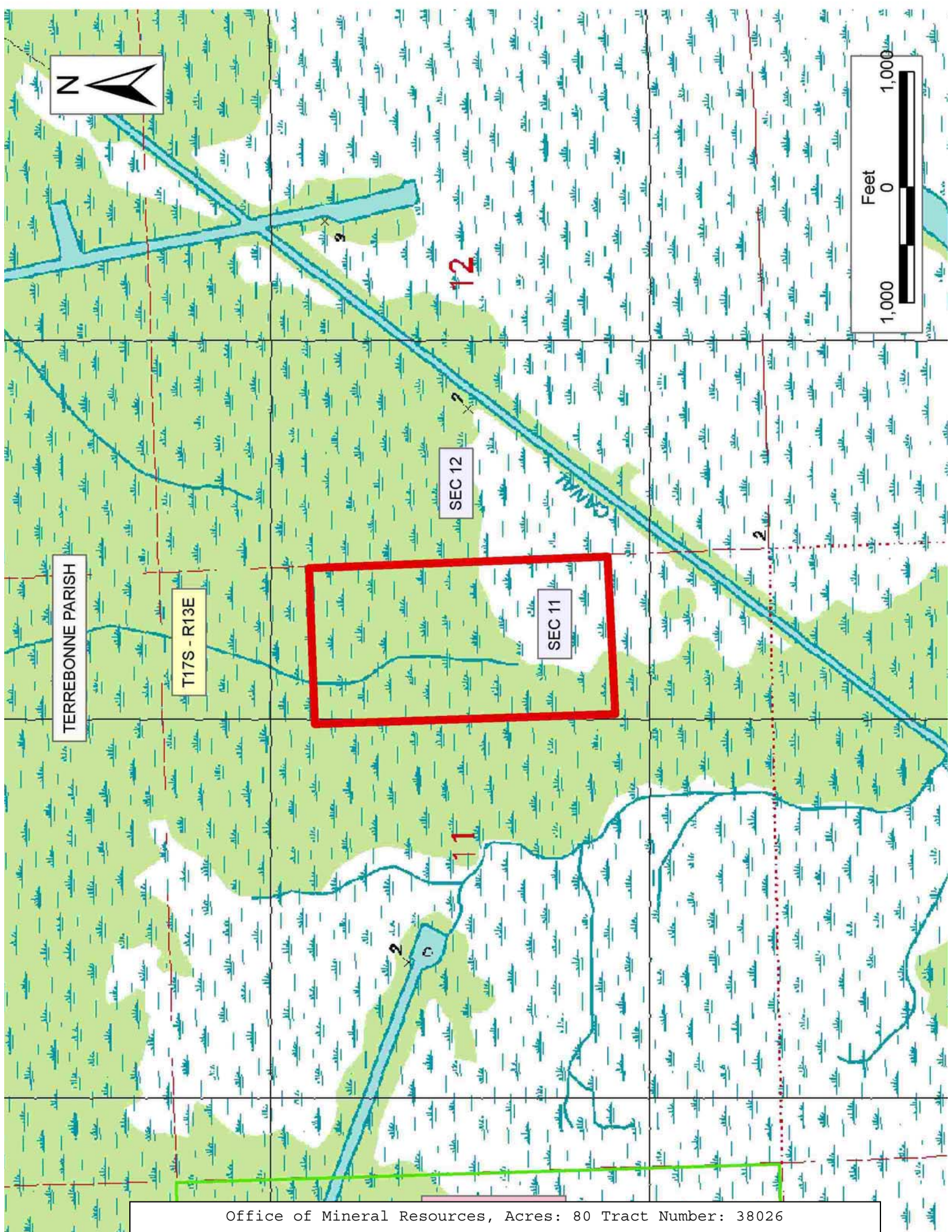
All lands, including lands now or formerly constituting the beds and bottoms of all water bodies of every nature and description, owned by and not presently under mineral lease as of December 14, 2005 from the State of Louisiana, situated in Terrebonne Parish, Louisiana, and being more fully described as follows: The Southeast Quarter of the Northeast Quarter and the Northeast Quarter of the Southeast Quarter of Section 11, Township 17 South, Range 13 East, Terrebonne Parish, Louisiana, containing approximately **80 acres**, all as more particularly outlined on a plat on file in the Office of Mineral Resources, Department of Natural Resources. All bearings, distances and coordinates are based on Louisiana Coordinate System of 1927, (North or South Zone), where applicable.

NOTE: The above description of the Tract nominated for lease has been provided and corrected, where required, exclusively by the nomination party. Any mineral lease selected from this Tract and awarded by the Louisiana State Mineral Board shall be without warranty of any kind, either express, implied, or statutory, including, but not limited to, the implied warranties of merchantability and fitness for a particular purpose. Should the mineral lease awarded by the Louisiana State Mineral Board be subsequently modified, cancelled or abrogated due to the existence of conflicting leases, operating agreements, private claims or other future obligations or conditions which may affect all or any portion of the leased Tract, it shall not relieve the Lessee of the obligation to pay any bonus due thereon to the Louisiana State Mineral Board, nor shall the Louisiana State Mineral Board be obligated to refund any consideration paid by the Lessor prior to such modification, cancellation, or abrogation, including, but not limited to, bonuses, rentals and royalties.

NOTE: The State of Louisiana does hereby reserve, and this lease shall be subject to, the imprescriptible right of surface use in the nature of a servitude in favor of the Department of Natural Resources, including its Offices and Commissions, for the sole purpose of implementing, constructing, servicing and maintaining approved coastal zone management and/or restoration projects. Utilization of any and all rights derived under this lease by the mineral lessee, its agents, successors or assigns, shall not interfere with nor hinder the reasonable surface use by the Department of Natural Resources, its Offices or Commissions, as herein above reserved.

Bidder	Cash Payment	Price/Acre	Rental	Oil	Gas	Other

Applicant: LAND MANGAEMENT SERVICES, L.L.C.



TERREBONNE PARISH

T17S - R13E

SEC 12

SEC 11

CANAL