

**TRACT 38018 - Jefferson and Lafourche Parishes, Louisiana**

All of the lands now or formerly constituting the beds and bottoms of all water bodies of every nature and description the title of which vests in the State of Louisiana, together with all islands arising therein and other lands formed by accretion or by reliction, where allowed by law, excepting tax adjudicated lands, and not presently under mineral lease on December 14, 2005, situated in Jefferson and Lafourche Parishes, Louisiana, and more particularly described as follows: Beginning at a point having Coordinates of X = 2,415,641.00 and Y = 240,431.00; thence North approximately 14,283 feet to a point on the South line of State Lease No. 1217, as amended, having a Coordinate of X = 2,415,641.00; thence Easterly approximately 8,887 feet along the South line of said State Lease No. 1217 to a point having a Coordinate of X = 2,424,528.00; thence South approximately 7,055 feet to a point on the North line or an extension thereof of State Lease No. 2084 having a Coordinate of X = 2,424,528.00; thence Westerly approximately 100 feet along the North line or a West projection thereof to a point having a Coordinate of X = 2,424,427.58; thence South approximately 6,266 feet to a point on the Northern boundary of State Lease No. 18676 having Coordinates of X = 2,424,427.58 and Y = 241,393.58; thence along the boundary of said State Lease No. 18676 the following courses: South 35 degrees 57 minutes 38 seconds West 4.41 feet, South 28 degrees 57 minutes 50 seconds West 382.83 feet, North 80 degrees 32 minutes 16 seconds West 30.02 feet, North 72 degrees 56 minutes 14 seconds West 1,056.50 feet, North 82 degrees 14 minutes 05 seconds West 222.04 feet, South 86 degrees 38 minutes 01 seconds West 170.29 feet, South 69 degrees 26 minutes 38 seconds West 256.32 feet, South 66 degrees 17 minutes 50 seconds West 447.77 feet, South 60 degrees 42 minutes 31 seconds West 470.11 feet, and South 37 degrees 36 minutes 50 seconds West 579.44 feet to a point having Coordinates of X = 2,421,396.34 and Y = 240,431.00; thence West 5,755.34 feet to the point of beginning, **LESS AND EXCEPT** all those portions of State Lease No. 1217, as amended, and State Lease No. 2084 that may lie within the above described tract, containing approximately **2,497 acres**, all as more particularly outlined on a plat on file in the Office of Mineral Resources, Department of Natural Resources. All bearings, distances and coordinates are based on Louisiana Coordinate System of 1927, (North or South Zone), where applicable.

NOTE: The above description of the Tract nominated for lease has been provided and corrected, where required, exclusively by the nomination party. Any mineral lease selected from this Tract and awarded by the Louisiana State Mineral Board shall be without warranty of any kind, either express, implied, or statutory, including, but not limited to, the implied warranties of merchantability and fitness for a particular purpose. Should the mineral lease awarded by the Louisiana State Mineral Board be subsequently modified, cancelled or abrogated due to the existence of conflicting leases, operating agreements, private claims or other future obligations or conditions which may affect all or any portion of the leased Tract, it shall not relieve the Lessee of the obligation to

pay any bonus due thereon to the Louisiana State Mineral Board, nor shall the Louisiana State Mineral Board be obligated to refund any consideration paid by the Lessor prior to such modification, cancellation, or abrogation, including, but not limited to, bonuses, rentals and royalties.

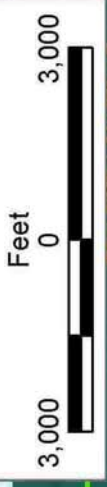
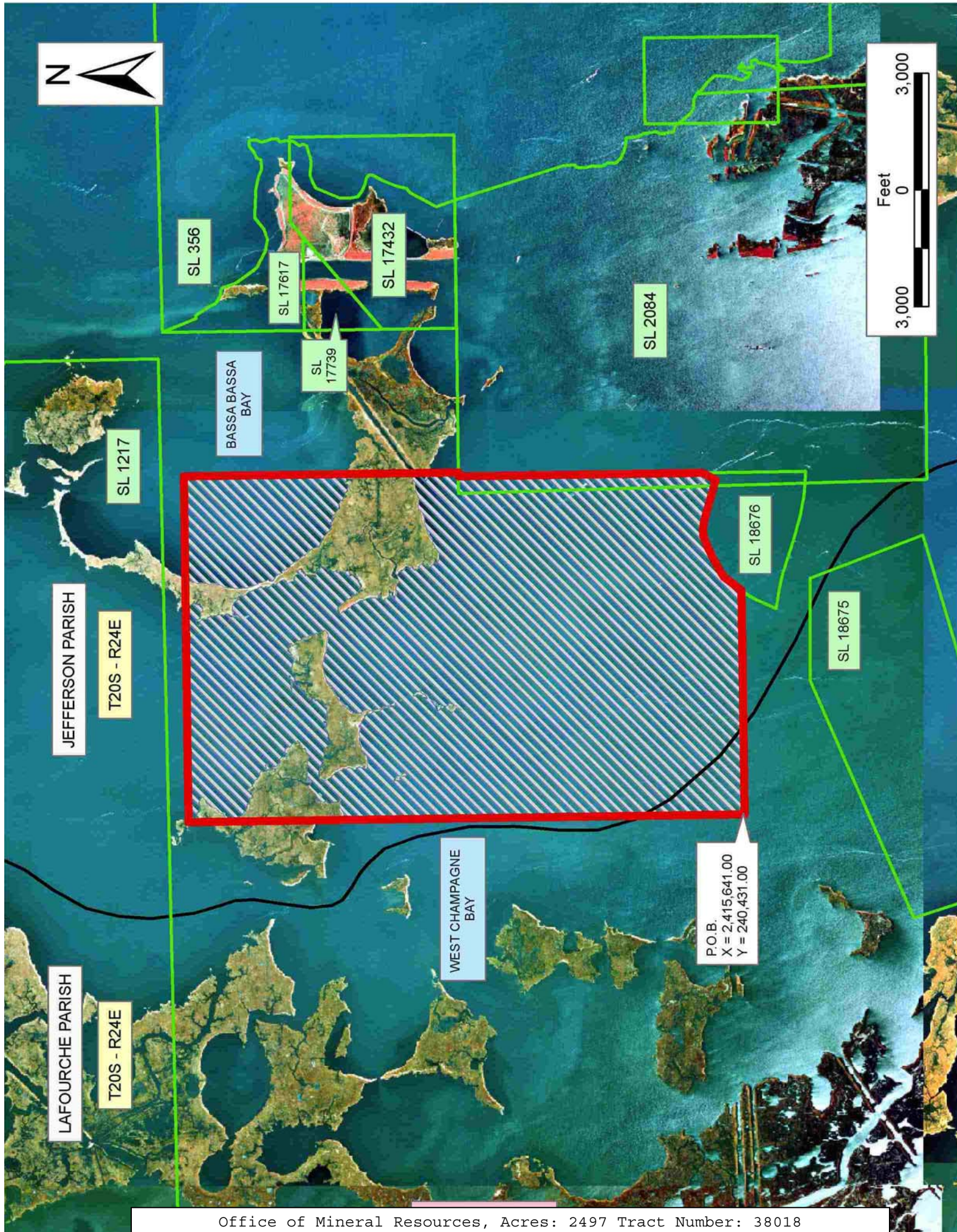
NOTE: The State of Louisiana does hereby reserve, and this lease shall be subject to, the imprescriptible right of surface use in the nature of a servitude in favor of the Department of Natural Resources, including its Offices and Commissions, for the sole purpose of implementing, constructing, servicing and maintaining approved coastal zone management and/or restoration projects. Utilization of any and all rights derived under this lease by the mineral lessee, its agents, successors or assigns, shall not interfere with nor hinder the reasonable surface use by the Department of Natural Resources, its Offices or Commissions, as herein above reserved.

NOTE: The Department of Wildlife and Fisheries has designated certain areas in the coastal waters of the State of Louisiana as Oyster Seed Bed Areas. The exact location of those Seed Bed Areas must be obtained from the Department of Wildlife and Fisheries and any work done under a mineral lease from the State of Louisiana may necessarily be conducted in conformity with the rules and regulations promulgated by the said Department of Wildlife and Fisheries for Oyster Seed Bed Areas.

Applicant: RETORT RESOURCES

Bidder	Cash Payment	Price/Acre	Rental	Oil	Gas	Other





P.O.B.  
X = 2,415,641.00  
Y = 240,431.00



**TRACT 38019 - Terrebonne Parish, Louisiana**

All of the lands now or formerly constituting the beds and bottoms of all water bodies of every nature and description the title of which vests in the State of Louisiana, together with all islands arising therein and other lands formed by accretion or by reliction, where allowed by law, excepting tax adjudicated lands, and not presently under mineral lease on December 14, 2005, situated in Terrebonne Parish, Louisiana, and more particularly described as follows: Beginning at a point having Coordinates of X = 2,201,014.52 and Y = 256,403.96; thence East 6,000.00 feet to the Northwest corner of State Lease No. 18582, having Coordinates of X = 2,207,014.52 and Y = 256,403.96; thence along the West and South lines of said State Lease No. 18582 the following: South 3,663.15 feet and East 5,000.00 feet to its Southeast corner, also being the Southwest corner State Lease No. 18594, having Coordinates of X = 2,212,014.52 and Y = 252,740.81; thence East 1,426.78 feet along the South line of said State Lease No. 18594 to its Southeast corner having Coordinates of X = 2,213,441.30 and Y = 252,740.81; thence South 2,951.80 feet to a point on the North line of State Lease No. 18268, having Coordinates of X = 2,213,441.30 and Y = 249,789.01; thence South 88 degrees 38 minutes 19 seconds West 1,641.76 feet along the North line of said State Lease No. 18268 to its most East Northwest corner, having Coordinates of X = 2,211,800.00 and Y = 249,750.00; thence West 10,785.48 feet to a point having Coordinates of X = 2,201,014.52 and Y = 249,750.00; thence North 6,653.96 feet to the point of beginning, containing approximately **470 acres**, all as more particularly outlined on a plat on file in the Office of Mineral Resources, Department of Natural Resources. All bearings, distances and coordinates are based on Louisiana Coordinate System of 1927, (North or South Zone), where applicable.

NOTE: The above description of the Tract nominated for lease has been provided and corrected, where required, exclusively by the nomination party. Any mineral lease selected from this Tract and awarded by the Louisiana State Mineral Board shall be without warranty of any kind, either express, implied, or statutory, including, but not limited to, the implied warranties of merchantability and fitness for a particular purpose. Should the mineral lease awarded by the Louisiana State Mineral Board be subsequently modified, cancelled or abrogated due to the existence of conflicting leases, operating agreements, private claims or other future obligations or conditions which may affect all or any portion of the leased Tract, it shall not relieve the Lessee of the obligation to pay any bonus due thereon to the Louisiana State Mineral Board, nor shall the Louisiana State Mineral Board be obligated to refund any consideration paid by the Lessor prior to such modification, cancellation, or abrogation, including, but not limited to, bonuses, rentals and royalties.

NOTE: The State of Louisiana does hereby reserve, and this lease shall be subject to, the imprescriptible right of surface use in the nature of a servitude in favor of the Department of Natural Resources, including its Offices and Commissions, for the sole purpose of implementing,

constructing, servicing and maintaining approved coastal zone management and/or restoration projects. Utilization of any and all rights derived under this lease by the mineral lessee, its agents, successors or assigns, shall not interfere with nor hinder the reasonable surface use by the Department of Natural Resources, its Offices or Commissions, as herein above reserved.

NOTE: The Department of Wildlife and Fisheries has designated certain areas in the coastal waters of the State of Louisiana as Oyster Seed Bed Areas. The exact location of those Seed Bed Areas must be obtained from the Department of Wildlife and Fisheries and any work done under a mineral lease from the State of Louisiana may necessarily be conducted in conformity with the rules and regulations promulgated by the said Department of Wildlife and Fisheries for Oyster Seed Bed Areas.

Applicant: THEOPHILUS OIL GAS & LAND SERVICES LLC

Bidder	Cash Payment	Price/Acre	Rental	Oil	Gas	Other





TERREBONNE PARISH

T20S - R18E

SL 18594

SL 18582



LAKE QUITMAN

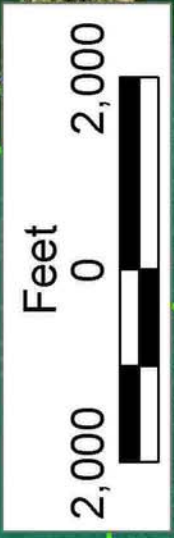
SL 17895

SL 18268

BAYOU DULAC

T20S - R17E

P.O.B.  
X=2,201,014.52  
Y=256,403.96





**TRACT 38020 - Terrebonne Parish, Louisiana**

All of the lands now or formerly constituting the beds and bottoms of all water bodies of every nature and description the title of which vests in the State of Louisiana, together with all islands arising therein and other lands formed by accretion or by reliction, where allowed by law, excepting tax adjudicated lands, and not presently under mineral lease on December 14, 2005, situated in Terrebonne Parish, Louisiana, and more particularly described as follows: Beginning at the Northeast corner of State Lease No. 18594 having Coordinates of X = 2,213,441.30 and Y = 256,403.96: thence East 10,583.57 feet to a point having Coordinates of X = 2,224,024.87 and Y = 256,403.96; thence South 3,663.15 feet to a point having Coordinates of X = 2,224,024.87 and Y = 252,740.81; thence West 10,583.57 feet to the Southeast corner of said State Lease No. 18594 having Coordinates of X = 2,213,441.30 and Y = 252,740.81; thence North 3,663.15 feet along the East Line of said State Lease No. 18594 to the point of beginning, containing approximately **170 acres**, all as more particularly outlined on a plat on file in the Office of Mineral Resources, Department of Natural Resources. All bearings, distances and coordinates are based on Louisiana Coordinate System of 1927, (North or South Zone), where applicable.

NOTE: The above description of the Tract nominated for lease has been provided and corrected, where required, exclusively by the nomination party. Any mineral lease selected from this Tract and awarded by the Louisiana State Mineral Board shall be without warranty of any kind, either express, implied, or statutory, including, but not limited to, the implied warranties of merchantability and fitness for a particular purpose. Should the mineral lease awarded by the Louisiana State Mineral Board be subsequently modified, cancelled or abrogated due to the existence of conflicting leases, operating agreements, private claims or other future obligations or conditions which may affect all or any portion of the leased Tract, it shall not relieve the Lessee of the obligation to pay any bonus due thereon to the Louisiana State Mineral Board, nor shall the Louisiana State Mineral Board be obligated to refund any consideration paid by the Lessor prior to such modification, cancellation, or abrogation, including, but not limited to, bonuses, rentals and royalties.

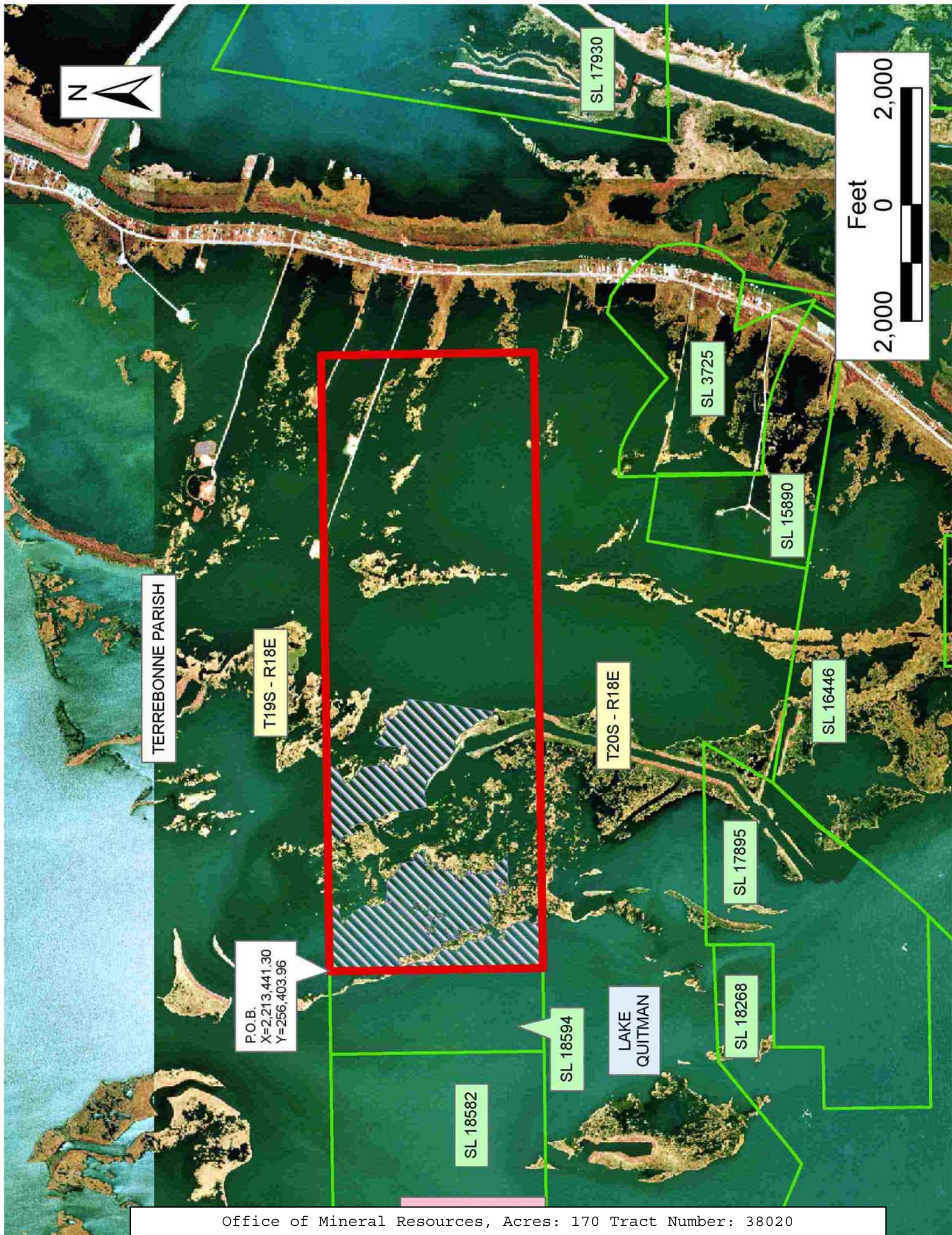
NOTE: The State of Louisiana does hereby reserve, and this lease shall be subject to, the imprescriptible right of surface use in the nature of a servitude in favor of the Department of Natural Resources, including its Offices and Commissions, for the sole purpose of implementing, constructing, servicing and maintaining approved coastal zone management and/or restoration projects. Utilization of any and all rights derived under this lease by the mineral lessee, its agents, successors or assigns, shall not interfere with nor hinder the reasonable surface use by the Department of Natural Resources, its Offices or Commissions, as herein above reserved.

NOTE: The Department of Wildlife and Fisheries has designated certain areas in the coastal waters of the State of Louisiana as Oyster Seed Bed Areas. The exact location of those Seed Bed Areas must be obtained from the Department of Wildlife and Fisheries and any work done under a mineral lease from the State of Louisiana may necessarily be conducted in conformity with the rules and regulations promulgated by the said Department of Wildlife and Fisheries for Oyster Seed Bed Areas.

Applicant: THEOPHILUS OIL GAS & LAND SERVICES LLC

Bidder	Cash Payment	Price/Acre	Rental	Oil	Gas	Other







**TRACT 38021 - Portion of Blocks 54, and 84, Main Pass Area, Revised, Plaquemines Parish, Louisiana**

All of the lands now or formerly constituting the beds and bottoms of all water bodies of every nature and description the title of which vests in the State of Louisiana, together with all islands arising therein and other lands formed by accretion or by reliction, where allowed by law, excepting tax adjudicated lands, and not presently under mineral lease on December 14, 2005, situated in Plaquemines Parish, Louisiana, and more particularly described as follows: Beginning at a point on the South line of Block 84, Main Pass Area, Revised, having Coordinates of X = 2,694,350.00 and Y = 233,830.00; thence North 39 degrees 56 minutes 15 seconds West 5,248.60 feet to the Southeast corner of State Lease No. 14680 having Coordinates of X = 2,690,980.65 and Y = 237,854.34; thence along the boundary of said State Lease No. 14680 the following: North 3,000.00 feet and West 1,910.65 feet to a point on the North line of said State Lease No. 14680, having Coordinates of X = 2,689,070.00 and Y = 240,854.34; thence North 7,725.66 feet to a point having Coordinates of X = 2,689,070.00 and Y = 248,580.00; thence East 1,551.75 feet to a point of located within Block 54, having Coordinates of X = 2,690,621.75 and Y = 248,580.00; thence Southeasterly on a straight line to a point having Coordinates of X = 2,700,735 and Y = 234,640; thence Southeasterly on a straight line to a point on the South line of said Block 84 having Coordinates of X = 2,701,075.46 and Y = 233,830.00; thence West 6,725.47 feet along the South line of said Block 66 to the point of beginning, containing approximately **1,833 acres**, all as more particularly outlined on a plat on file in the Office of Mineral Resources, Department of Natural Resources. All bearings, distances and coordinates are based on Louisiana Coordinate System of 1927, (North or South Zone), where applicable.

NOTE: The above description of the Tract nominated for lease has been provided and corrected, where required, exclusively by the nomination party. Any mineral lease selected from this Tract and awarded by the Louisiana State Mineral Board shall be without warranty of any kind, either express, implied, or statutory, including, but not limited to, the implied warranties of merchantability and fitness for a particular purpose. Should the mineral lease awarded by the Louisiana State Mineral Board be subsequently modified, cancelled or abrogated due to the existence of conflicting leases, operating agreements, private claims or other future obligations or conditions which may affect all or any portion of the leased Tract, it shall not relieve the Lessee of the obligation to pay any bonus due thereon to the Louisiana State Mineral Board, nor shall the Louisiana State Mineral Board be obligated to refund any consideration paid by the Lessor prior to such modification, cancellation, or abrogation, including, but not limited to, bonuses, rentals and royalties.

NOTE: The State of Louisiana does hereby reserve, and this lease shall be subject to, the imprescriptible right of surface use in the nature of a servitude in favor of the Department of Natural Resources, including its Offices and Commissions, for the sole purpose of implementing,

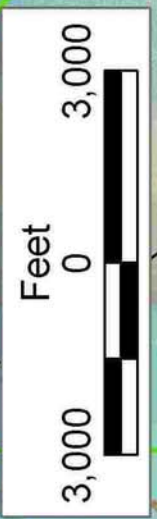
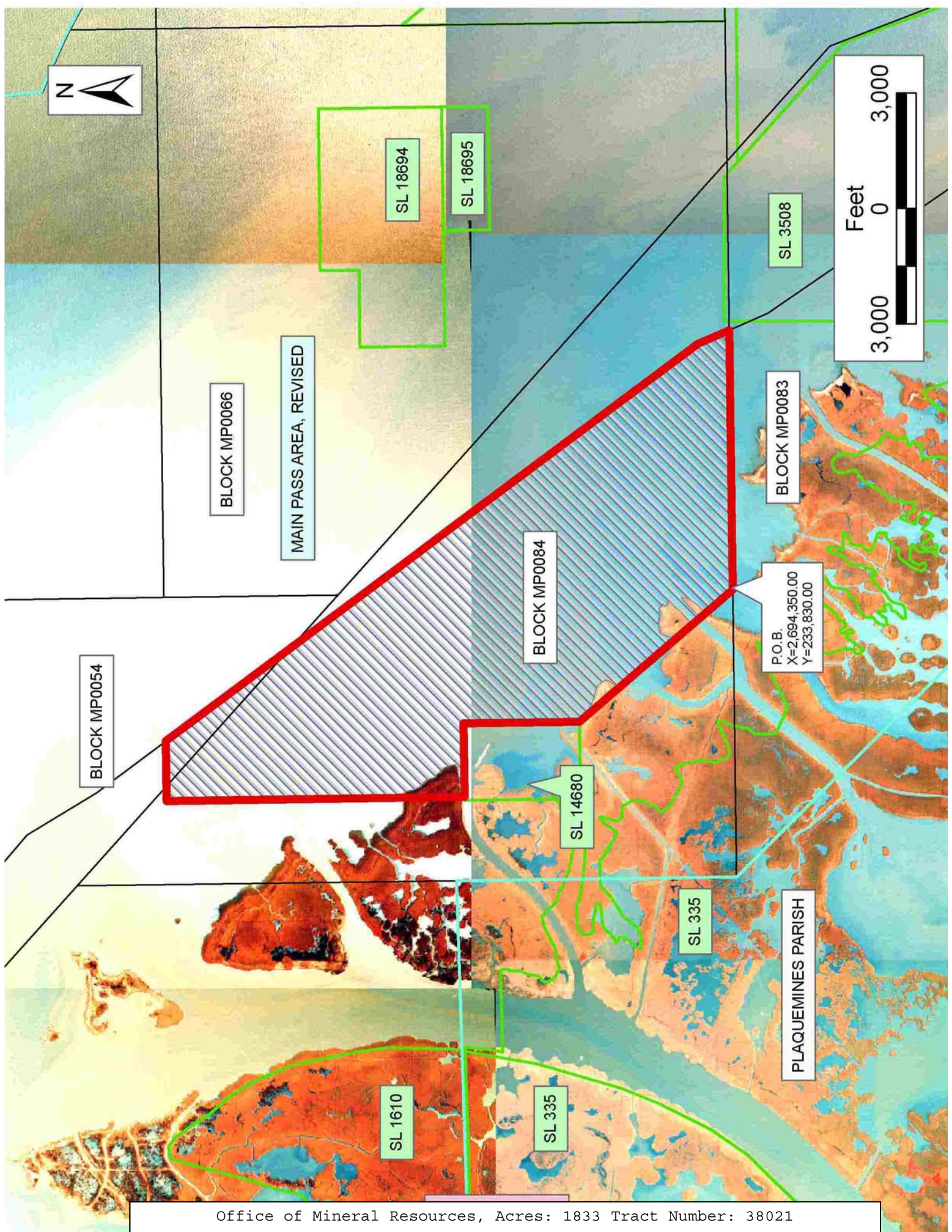
constructing, servicing and maintaining approved coastal zone management and/or restoration projects. Utilization of any and all rights derived under this lease by the mineral lessee, its agents, successors or assigns, shall not interfere with nor hinder the reasonable surface use by the Department of Natural Resources, its Offices or Commissions, as herein above reserved.

NOTE: The Department of Wildlife and Fisheries has designated certain areas in the coastal waters of the State of Louisiana as Oyster Seed Bed Areas. The exact location of those Seed Bed Areas must be obtained from the Department of Wildlife and Fisheries and any work done under a mineral lease from the State of Louisiana may necessarily be conducted in conformity with the rules and regulations promulgated by the said Department of Wildlife and Fisheries for Oyster Seed Bed Areas.

Applicant: CYPRESS ENERGY CORPORATION

Bidder	Cash Payment	Price/Acre	Rental	Oil	Gas	Other





BLOCK MP0054

BLOCK MP0066

MAIN PASS AREA, REVISED

BLOCK MP0084

BLOCK MP0083

PLAUQUIMINES PARISH

SL 18694

SL 18695

SL 3508

P.O.B.  
X=2,694,350.00  
Y=233,830.00

SL 14680

SL 335

SL 1610

SL 335