

**TRACT 38008 - St. Mary Parish, Louisiana**

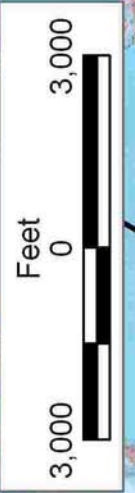
All of the lands now or formerly constituting the beds and bottoms of all water bodies of every nature and description the title of which vests in the State of Louisiana, together with all islands arising therein and other lands formed by accretion or by reliction, where allowed by law, excepting tax adjudicated lands, and not presently under mineral lease on December 14, 2005, situated in St. Mary Parish, Louisiana, and more particularly described as follows: Beginning at a point having Coordinates of X = 2,003,580.00 and Y = 331,708.00; thence East approximately 10,889 feet to a point being on the West boundary line of State Lease No. 1337 having a coordinate of Y = 331,708.00; thence South approximately 8,058 feet along the West boundary line of said State Lease No. 1337 to a point having a coordinate of Y = 323,650.00; thence West approximately 10,976 feet to a point having Coordinates of X = 2,003,580.00 and Y = 323,650.00; thence North 8,058.00 feet to the point of beginning, containing approximately **340 acres**, all as more particularly outlined on a plat on file in the Office of Mineral Resources, Department of Natural Resources. All bearings, distances and coordinates are based on Louisiana Coordinate System of 1927, (North or South Zone), where applicable.

NOTE: The above description of the Tract nominated for lease has been provided and corrected, where required, exclusively by the nomination party. Any mineral lease selected from this Tract and awarded by the Louisiana State Mineral Board shall be without warranty of any kind, either express, implied, or statutory, including, but not limited to, the implied warranties of merchantability and fitness for a particular purpose. Should the mineral lease awarded by the Louisiana State Mineral Board be subsequently modified, cancelled or abrogated due to the existence of conflicting leases, operating agreements, private claims or other future obligations or conditions which may affect all or any portion of the leased Tract, it shall not relieve the Lessee of the obligation to pay any bonus due thereon to the Louisiana State Mineral Board, nor shall the Louisiana State Mineral Board be obligated to refund any consideration paid by the Lessor prior to such modification, cancellation, or abrogation, including, but not limited to, bonuses, rentals and royalties.

NOTE: The State of Louisiana does hereby reserve, and this lease shall be subject to, the imprescriptible right of surface use in the nature of a servitude in favor of the Department of Natural Resources, including its Offices and Commissions, for the sole purpose of implementing, constructing, servicing and maintaining approved coastal zone management and/or restoration projects. Utilization of any and all rights derived under this lease by the mineral lessee, its agents, successors or assigns, shall not interfere with nor hinder the reasonable surface use by the Department of Natural Resources, its Offices or Commissions, as herein above reserved.

Bidder	Cash Payment	Price/Acre	Rental	Oil	Gas	Other
--------	--------------	------------	--------	-----	-----	-------


Applicant: SUNCOAST LAND SERVICES, INC.



ST MARY PARISH

T17S - R11E

T17S - R12E

SL 1337

GREENS BAYOU

LAKE SALVE

BIG WAX BAYOU

BIG BOG BAYOU

WILLOW PASS

P.O.B.  
X = 2,003,580.00  
Y = 331,708.00

BIG WAX BAYOU

CYPRESS PASS

**TRACT 38009 - Jefferson Parish, Louisiana**

All of the lands now or formerly constituting the beds and bottoms of all water bodies of every nature and description the title of which vests in the State of Louisiana, together with all islands arising therein and other lands formed by accretion or by reliction, where allowed by law, excepting tax adjudicated lands, and not presently under mineral lease on December 14, 2005, situated in Jefferson Parish, Louisiana, and more particularly described as follows: Beginning at a point having Coordinates of X = 2,400,305.25 and Y = 321,967.04; thence North 89 degrees 00 minutes 00 seconds East 5,276.73 feet to a point having Coordinates of X = 2,405,581.18 and Y = 322,059.14; thence South 01 degree 01 minute 06 seconds East 890.28 feet to the Northwest corner of State Lease No. 18441 having Coordinates of X = 2,405,597.00 and Y = 321,169.00; thence South 01 degree 02 minutes 21 seconds East 1,819.30 feet along the Western boundary of said State Lease No. 18441 to its Southwest corner having Coordinates of X = 2,405,630.00 and Y = 319,350.00; thence South 01 degree 20 minutes 31 seconds East 7,695.68 feet to the most East Northeast corner of State Lease No. 18727 having Coordinates of X = 2,405,810.22 and Y = 311,656.43; thence along the Northern boundary of said State Lease No. 18727 the following courses and distances: West 2,755.45 feet, North 64 degrees 45 minutes 09 seconds West 932.33 feet, South 2,783.00 feet and West 1,681.44 feet to a point on the Northern boundary of State Lease No. 18727 having Coordinates of X = 2,400,530.06 and Y = 309,271.09; thence North 01 degree 00 minutes 52 seconds West 12,697.94 feet to the point of beginning, containing approximately **550 acres**, all as more particularly outlined on a plat on file in the Office of Mineral Resources, Department of Natural Resources. All bearings, distances and coordinates are based on Louisiana Coordinate System of 1927, (North or South Zone), where applicable.

NOTE: The above description of the Tract nominated for lease has been provided and corrected, where required, exclusively by the nomination party. Any mineral lease selected from this Tract and awarded by the Louisiana State Mineral Board shall be without warranty of any kind, either express, implied, or statutory, including, but not limited to, the implied warranties of merchantability and fitness for a particular purpose. Should the mineral lease awarded by the Louisiana State Mineral Board be subsequently modified, cancelled or abrogated due to the existence of conflicting leases, operating agreements, private claims or other future obligations or conditions which may affect all or any portion of the leased Tract, it shall not relieve the Lessee of the obligation to pay any bonus due thereon to the Louisiana State Mineral Board, nor shall the Louisiana State Mineral Board be obligated to refund any consideration paid by the Lessor prior to such modification, cancellation, or abrogation, including, but not limited to, bonuses, rentals and royalties.

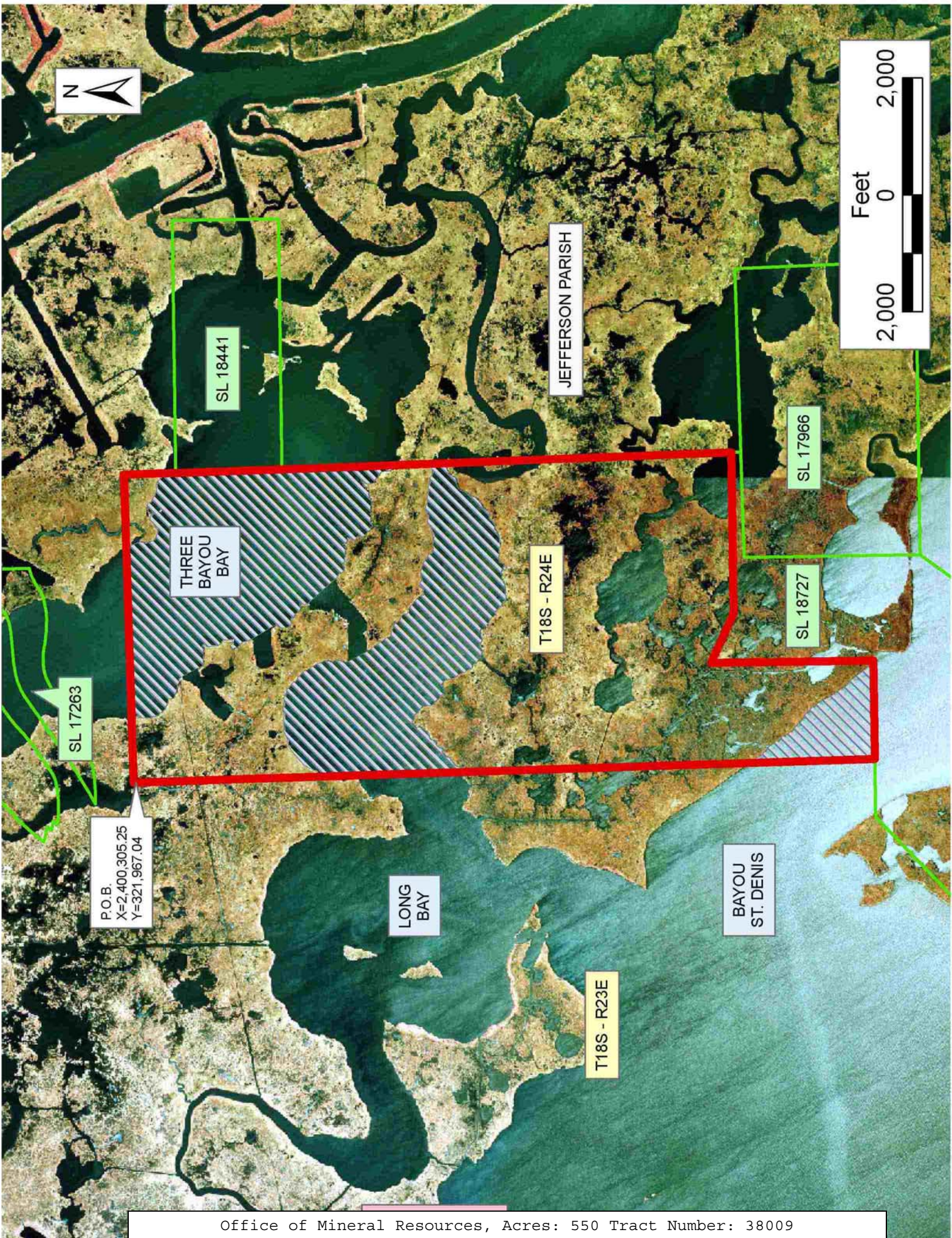
NOTE: The State of Louisiana does hereby reserve, and this lease shall be subject to, the imprescriptible right of surface use in the nature of a servitude in favor of the Department of Natural Resources, including its Offices and Commissions, for the sole purpose of implementing,

constructing, servicing and maintaining approved coastal zone management and/or restoration projects. Utilization of any and all rights derived under this lease by the mineral lessee, its agents, successors or assigns, shall not interfere with nor hinder the reasonable surface use by the Department of Natural Resources, its Offices or Commissions, as herein above reserved.

NOTE: The Department of Wildlife and Fisheries has designated certain areas in the coastal waters of the State of Louisiana as Oyster Seed Bed Areas. The exact location of those Seed Bed Areas must be obtained from the Department of Wildlife and Fisheries and any work done under a mineral lease from the State of Louisiana may necessarily be conducted in conformity with the rules and regulations promulgated by the said Department of Wildlife and Fisheries for Oyster Seed Bed Areas.

Applicant: ACADIAN LAND SERVICES, LLC

Bidder	Cash Payment	Price/Acre	Rental	Oil	Gas	Other



P.O.B.  
X=2,400,305.25  
Y=321,967.04

THREE  
BAYOU  
BAY

LONG  
BAY

BAYOU  
ST. DENIS

T18S - R24E

T18S - R23E

JEFFERSON PARISH

SL 18441

SL 17966

SL 18727

SL 17263



**TRACT 38010 - Jefferson Parish, Louisiana**

All of the lands now or formerly constituting the beds and bottoms of all water bodies of every nature and description the title of which vests in the State of Louisiana, together with all islands arising therein and other lands formed by accretion or by reliction, where allowed by law, excepting tax adjudicated lands, and not presently under mineral lease on December 14, 2005, situated in Jefferson Parish, Louisiana, and more particularly described as follows: Beginning at a point having Coordinates of X = 2,391,806.41 and Y = 320,100.03; thence North 88 degrees 01 minute 50 seconds East 8,531.75 feet to a point having Coordinates of X = 2,400,333.12 and Y = 320,393.23; thence South 01 degree 00 minutes 52 seconds East 11,123.88 feet to a point on the Northern boundary of State Lease No. 18727 having Coordinates of X = 2,400,530.06 and Y = 309,271.09; thence West 995.25 feet along the Northern boundary of said State Lease No. 18727 to a point having Coordinates of X = 2,399,534.81 and Y = 309,271.09; thence South 46 degrees 45 minutes 26 seconds West 2,877.88 feet to a point on the Northwest corner of said State Lease No. 18727 having Coordinates of X = 2,397,438.40 and Y = 307,299.48; thence North 63 degrees 17 minutes 15 seconds West 6,304.89 feet to a point having Coordinates of X = 2,391,806.41 and Y = 310,133.61; thence North 9,966.41 feet to the point of beginning, containing approximately **1,678.00 acres**, all as more particularly outlined on a plat on file in the Office of Mineral Resources, Department of Natural Resources. All bearings, distances and coordinates are based on Louisiana Coordinate System of 1927, (North or South Zone), where applicable.

NOTE: The above description of the Tract nominated for lease has been provided and corrected, where required, exclusively by the nomination party. Any mineral lease selected from this Tract and awarded by the Louisiana State Mineral Board shall be without warranty of any kind, either express, implied, or statutory, including, but not limited to, the implied warranties of merchantability and fitness for a particular purpose. Should the mineral lease awarded by the Louisiana State Mineral Board be subsequently modified, cancelled or abrogated due to the existence of conflicting leases, operating agreements, private claims or other future obligations or conditions which may affect all or any portion of the leased Tract, it shall not relieve the Lessee of the obligation to pay any bonus due thereon to the Louisiana State Mineral Board, nor shall the Louisiana State Mineral Board be obligated to refund any consideration paid by the Lessor prior to such modification, cancellation, or abrogation, including, but not limited to, bonuses, rentals and royalties.

NOTE: The State of Louisiana does hereby reserve, and this lease shall be subject to, the imprescriptible right of surface use in the nature of a servitude in favor of the Department of Natural Resources, including its Offices and Commissions, for the sole purpose of implementing, constructing, servicing and maintaining approved coastal zone management and/or restoration projects. Utilization of any and all rights derived under this lease by the mineral lessee, its agents, successors or assigns,

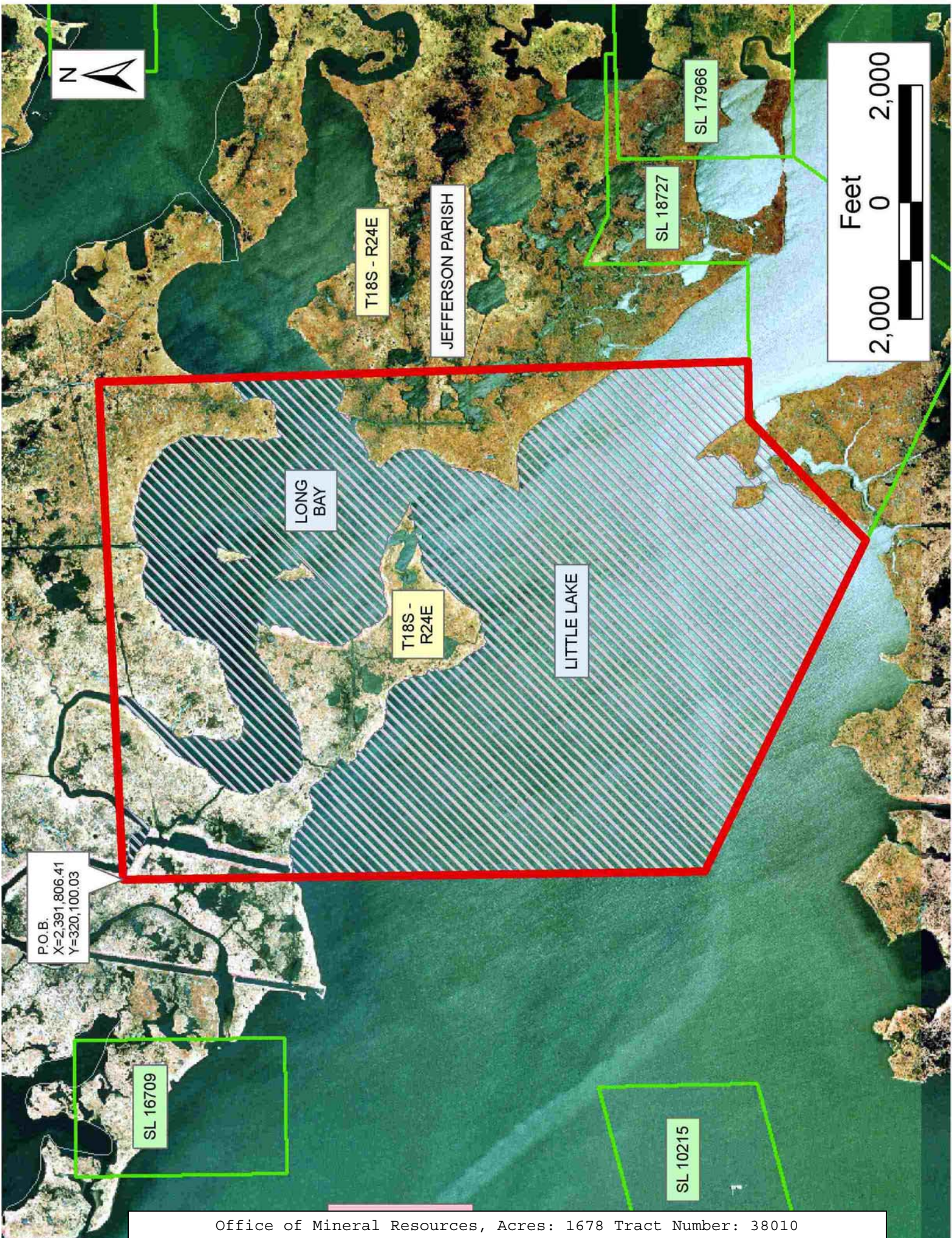
shall not interfere with nor hinder the reasonable surface use by the Department of Natural Resources, its Offices or Commissions, as herein above reserved.

NOTE: The Department of Wildlife and Fisheries has designated certain areas in the coastal waters of the State of Louisiana as Oyster Seed Bed Areas. The exact location of those Seed Bed Areas must be obtained from the Department of Wildlife and Fisheries and any work done under a mineral lease from the State of Louisiana may necessarily be conducted in conformity with the rules and regulations promulgated by the said Department of Wildlife and Fisheries for Oyster Seed Bed Areas.

Applicant: ACADIAN LAND SERVICES, LLC

Bidder	Cash Payment	Price/Acre	Rental	Oil	Gas	Other





P.O.B.  
X=2,391,806.41  
Y=320,100.03

**TRACT 38011 - Jefferson Parish, Louisiana**

All of the lands now or formerly constituting the beds and bottoms of all water bodies of every nature and description the title of which vests in the State of Louisiana, together with all islands arising therein and other lands formed by accretion or by reliction, where allowed by law, excepting tax adjudicated lands, and not presently under mineral lease on December 14, 2005, situated in Jefferson Parish, Louisiana, and more particularly described as follows: Beginning at a point having Coordinates of X = 2,412,382.79 and Y = 319,350.00; thence South 00 degrees 00 minutes 06 seconds East 7,746.13 feet to a point having Coordinates of X = 2,412,383.00 and Y = 311,603.87; thence South 89 degrees 03 minutes 43 seconds West 3,427.84 feet to the Northeast corner of State Lease No. 17966 having Coordinates of X = 2,408,955.62 and Y = 311,547.75; thence South 89 degrees 00 minutes 38 seconds West 3,145.88 feet along the Northern boundary of said State Lease No. 17966 to a corner of State Lease No. 18727 having Coordinates of X = 2,405,810.21 and Y = 311,493.42; thence North 163.01 feet along the East boundary of said State Lease No. 18727 to its Northeast corner having Coordinates of X = 2,405,810.22 and Y = 311,656.43; thence North 01 degree 20 minutes 31 seconds West 7,695.68 feet to the Southwest corner of State Lease No. 18441 having Coordinates of X = 2,405,630.00 and Y = 319,350.00; thence East 4,290.00 feet along the South boundary of said State Lease No. 18441 to its Southeast having Coordinates of X = 2,409,920.00 and Y = 319,350.00; thence East 2,462.79 feet to the point of beginning, containing approximately **214.00 acres**, all as more particularly outlined on a plat on file in the Office of Mineral Resources, Department of Natural Resources. All bearings, distances and coordinates are based on Louisiana Coordinate System of 1927, (North or South Zone), where applicable.

NOTE: The above description of the Tract nominated for lease has been provided and corrected, where required, exclusively by the nomination party. Any mineral lease selected from this Tract and awarded by the Louisiana State Mineral Board shall be without warranty of any kind, either express, implied, or statutory, including, but not limited to, the implied warranties of merchantability and fitness for a particular purpose. Should the mineral lease awarded by the Louisiana State Mineral Board be subsequently modified, cancelled or abrogated due to the existence of conflicting leases, operating agreements, private claims or other future obligations or conditions which may affect all or any portion of the leased Tract, it shall not relieve the Lessee of the obligation to pay any bonus due thereon to the Louisiana State Mineral Board, nor shall the Louisiana State Mineral Board be obligated to refund any consideration paid by the Lessor prior to such modification, cancellation, or abrogation, including, but not limited to, bonuses, rentals and royalties.

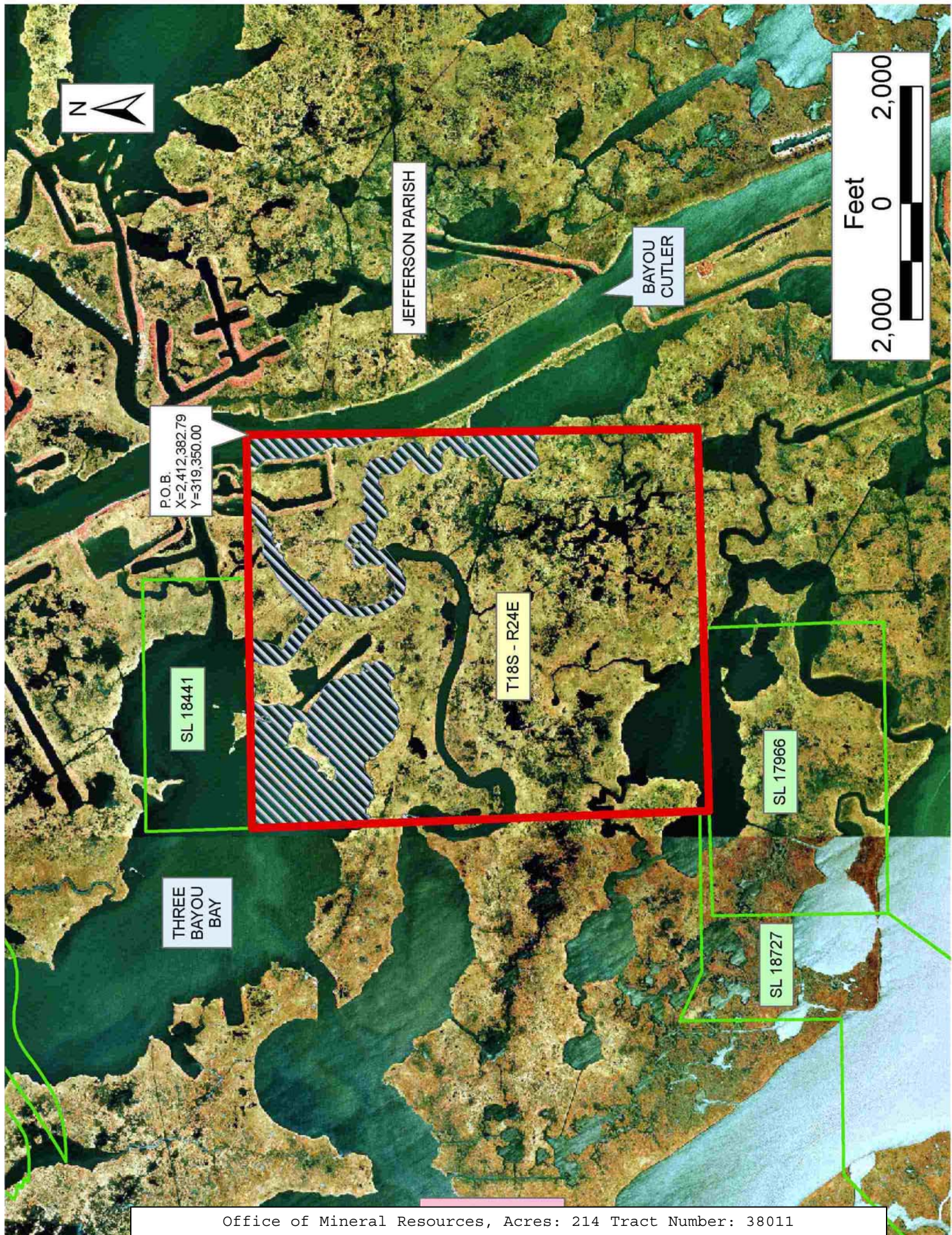
NOTE: The State of Louisiana does hereby reserve, and this lease shall be subject to, the imprescriptible right of surface use in the nature of a servitude in favor of the Department of Natural Resources, including its Offices and Commissions, for the sole purpose of implementing,

constructing, servicing and maintaining approved coastal zone management and/or restoration projects. Utilization of any and all rights derived under this lease by the mineral lessee, its agents, successors or assigns, shall not interfere with nor hinder the reasonable surface use by the Department of Natural Resources, its Offices or Commissions, as herein above reserved.

NOTE: The Department of Wildlife and Fisheries has designated certain areas in the coastal waters of the State of Louisiana as Oyster Seed Bed Areas. The exact location of those Seed Bed Areas must be obtained from the Department of Wildlife and Fisheries and any work done under a mineral lease from the State of Louisiana may necessarily be conducted in conformity with the rules and regulations promulgated by the said Department of Wildlife and Fisheries for Oyster Seed Bed Areas.

Applicant: ACADIAN LAND SERVICES, LLC

Bidder	Cash Payment	Price/Acre	Rental	Oil	Gas	Other

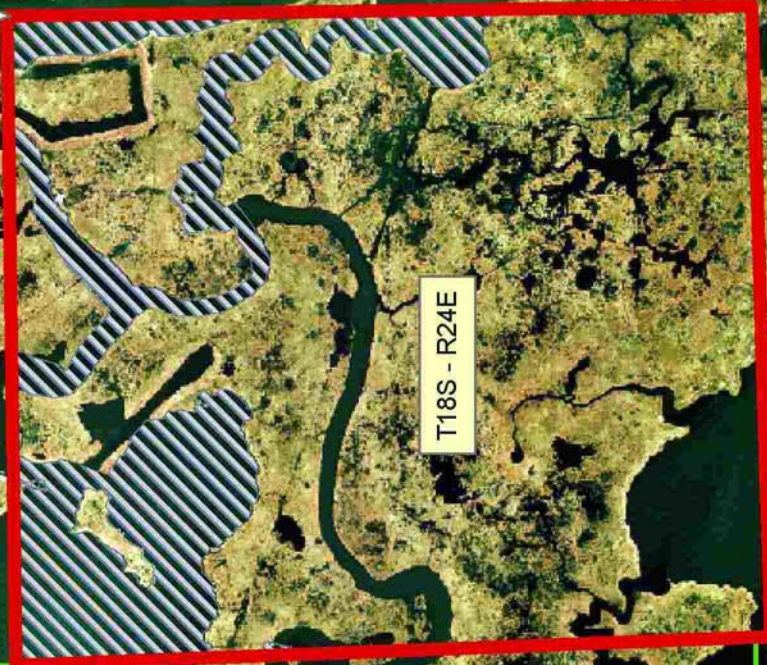


JEFFERSON PARISH

BAYOU CUTLER



P.O.B.  
X=2,412,382.79  
Y=3,19,350.00



T18S - R24E

SL 18441

SL 17966

THREE BAYOU BAY

SL 18727

**TRACT 38012 - Terrebonne Parish, Louisiana**

All of the lands now or formerly constituting the beds and bottoms of all water bodies of every nature and description the title of which vests in the State of Louisiana, together with all islands arising therein and other lands formed by accretion or by reliction, where allowed by law, excepting tax adjudicated lands, and not presently under mineral lease on December 14, 2005, situated in Terrebonne Parish, Louisiana, and more particularly described as follows: Beginning at a point having Coordinates of X = 2,201,014.52 and Y = 270,217.00; thence East 6,000.00 feet to a point having Coordinates of X = 2,207,014.52 and Y = 270,217.00; thence South 13,813.04 feet to a point having Coordinates of X = 2,207,014.52 and Y = 256,403.96; thence West 6,000.00 feet to a point having Coordinates of X = 2,201,014.52 and Y = 256,403.96; thence North 13,813.04 feet to the point of beginning, containing approximately **445 acres**, all as more particularly outlined on a plat on file in the Office of Mineral Resources, Department of Natural Resources. All bearings, distances and coordinates are based on Louisiana Coordinate System of 1927, (North or South Zone), where applicable.

NOTE: The above description of the Tract nominated for lease has been provided and corrected, where required, exclusively by the nomination party. Any mineral lease selected from this Tract and awarded by the Louisiana State Mineral Board shall be without warranty of any kind, either express, implied, or statutory, including, but not limited to, the implied warranties of merchantability and fitness for a particular purpose. Should the mineral lease awarded by the Louisiana State Mineral Board be subsequently modified, cancelled or abrogated due to the existence of conflicting leases, operating agreements, private claims or other future obligations or conditions which may affect all or any portion of the leased Tract, it shall not relieve the Lessee of the obligation to pay any bonus due thereon to the Louisiana State Mineral Board, nor shall the Louisiana State Mineral Board be obligated to refund any consideration paid by the Lessor prior to such modification, cancellation, or abrogation, including, but not limited to, bonuses, rentals and royalties.

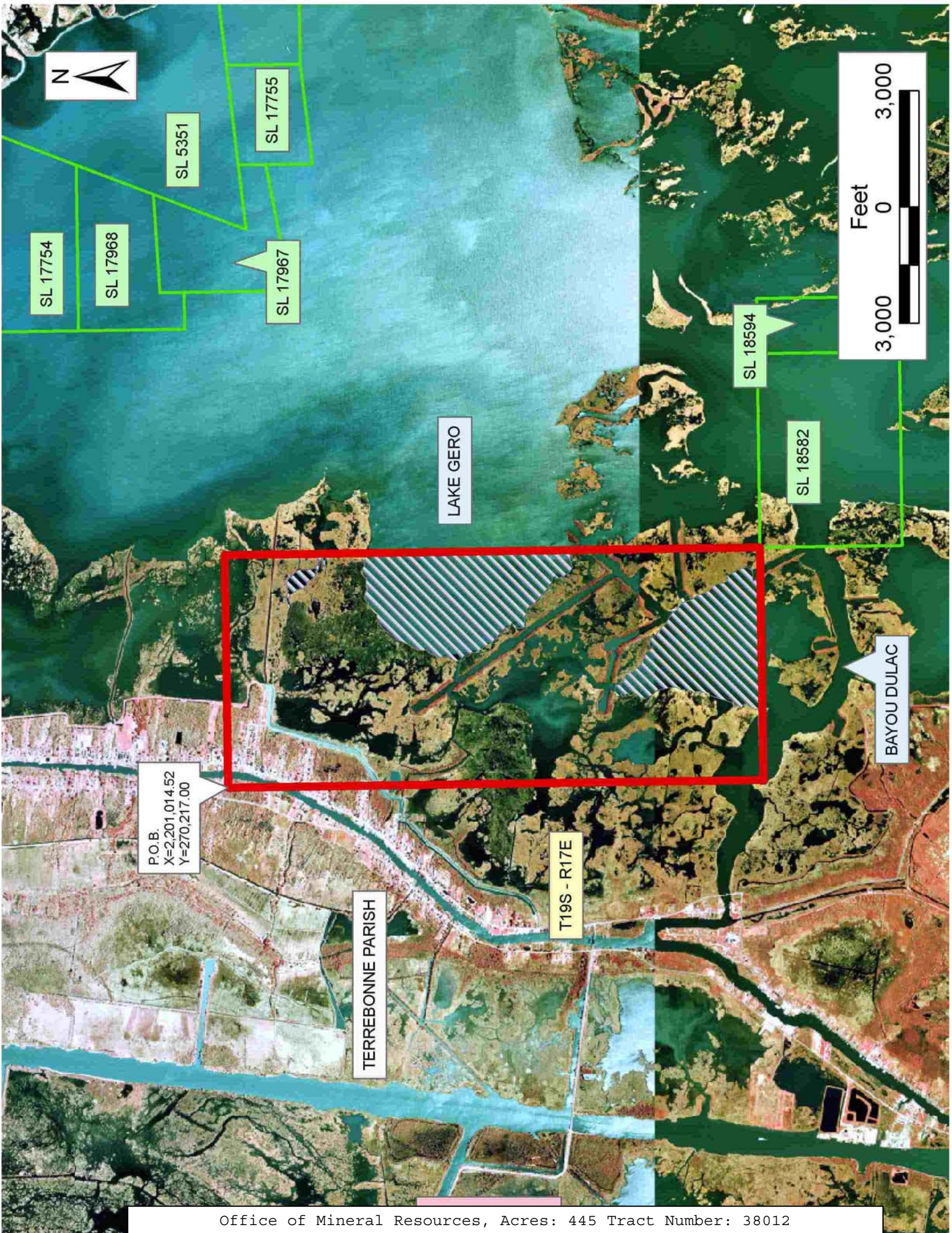
NOTE: The State of Louisiana does hereby reserve, and this lease shall be subject to, the imprescriptible right of surface use in the nature of a servitude in favor of the Department of Natural Resources, including its Offices and Commissions, for the sole purpose of implementing, constructing, servicing and maintaining approved coastal zone management and/or restoration projects. Utilization of any and all rights derived under this lease by the mineral lessee, its agents, successors or assigns, shall not interfere with nor hinder the reasonable surface use by the Department of Natural Resources, its Offices or Commissions, as herein above reserved.

NOTE: The Department of Wildlife and Fisheries has designated certain areas in the coastal waters of the State of Louisiana as Oyster Seed Bed Areas. The exact location of those Seed Bed Areas must be obtained from

the Department of Wildlife and Fisheries and any work done under a mineral lease from the State of Louisiana may necessarily be conducted in conformity with the rules and regulations promulgated by the said Department of Wildlife and Fisheries for Oyster Seed Bed Areas.

Applicant: THEOPHILUS OIL GAS & LAND SERVICES LLC

Bidder	Cash Payment	Price/Acre	Rental	Oil	Gas	Other



**TRACT 38013 - Terrebonne Parish, Louisiana**

All of the lands now or formerly constituting the beds and bottoms of all water bodies of every nature and description the title of which vests in the State of Louisiana, together with all islands arising therein and other lands formed by accretion or by reliction, where allowed by law, excepting tax adjudicated lands, and not presently under mineral lease on December 14, 2005, situated in Terrebonne Parish, Louisiana, and more particularly described as follows: Beginning at a point having Coordinates of X = 2,207,014.52 and Y = 270,217.00; thence East 6,793.46 feet to a point on the West line of State Lease No. 17967 having Coordinates of X = 2,213,807.98 and Y = 270,217.00; thence South 1,782.92 feet along the West line of said State Lease No. 17967 to its Southwest corner having Coordinates of X = 2,213,807.98 and Y = 268,434.08; thence South 12,030.12 feet to a point having Coordinates of X = 2,213,807.98 and Y = 256,403.96; thence West 366.68 feet to the Northeast corner of State Lease No. 18594 having Coordinates of X = 2,213,441.30 and Y = 256,403.96; thence West 1,426.78 feet along the North line of said State Lease No. 18594 to its Northwest corner, also being the Northeast corner of State Lease No. 18582, having Coordinates of X = 2,212,014.52 and Y = 256,403.96; thence West 5,000.00 feet along the North line of said State Lease No. 18582 to its Northwest corner having Coordinates of X = 2,207,014.52 and Y = 256,403.96; thence North 13,813.04 feet to the point of beginning, containing approximately **1,800 acres**, all as more particularly outlined on a plat on file in the Office of Mineral Resources, Department of Natural Resources. All bearings, distances and coordinates are based on Louisiana Coordinate System of 1927, (North or South Zone), where applicable.

NOTE: The above description of the Tract nominated for lease has been provided and corrected, where required, exclusively by the nomination party. Any mineral lease selected from this Tract and awarded by the Louisiana State Mineral Board shall be without warranty of any kind, either express, implied, or statutory, including, but not limited to, the implied warranties of merchantability and fitness for a particular purpose. Should the mineral lease awarded by the Louisiana State Mineral Board be subsequently modified, cancelled or abrogated due to the existence of conflicting leases, operating agreements, private claims or other future obligations or conditions which may affect all or any portion of the leased Tract, it shall not relieve the Lessee of the obligation to pay any bonus due thereon to the Louisiana State Mineral Board, nor shall the Louisiana State Mineral Board be obligated to refund any consideration paid by the Lessor prior to such modification, cancellation, or abrogation, including, but not limited to, bonuses, rentals and royalties.

NOTE: The State of Louisiana does hereby reserve, and this lease shall be subject to, the imprescriptible right of surface use in the nature of a servitude in favor of the Department of Natural Resources, including its Offices and Commissions, for the sole purpose of implementing, constructing, servicing and maintaining approved coastal zone management and/or restoration projects. Utilization of any and all rights derived

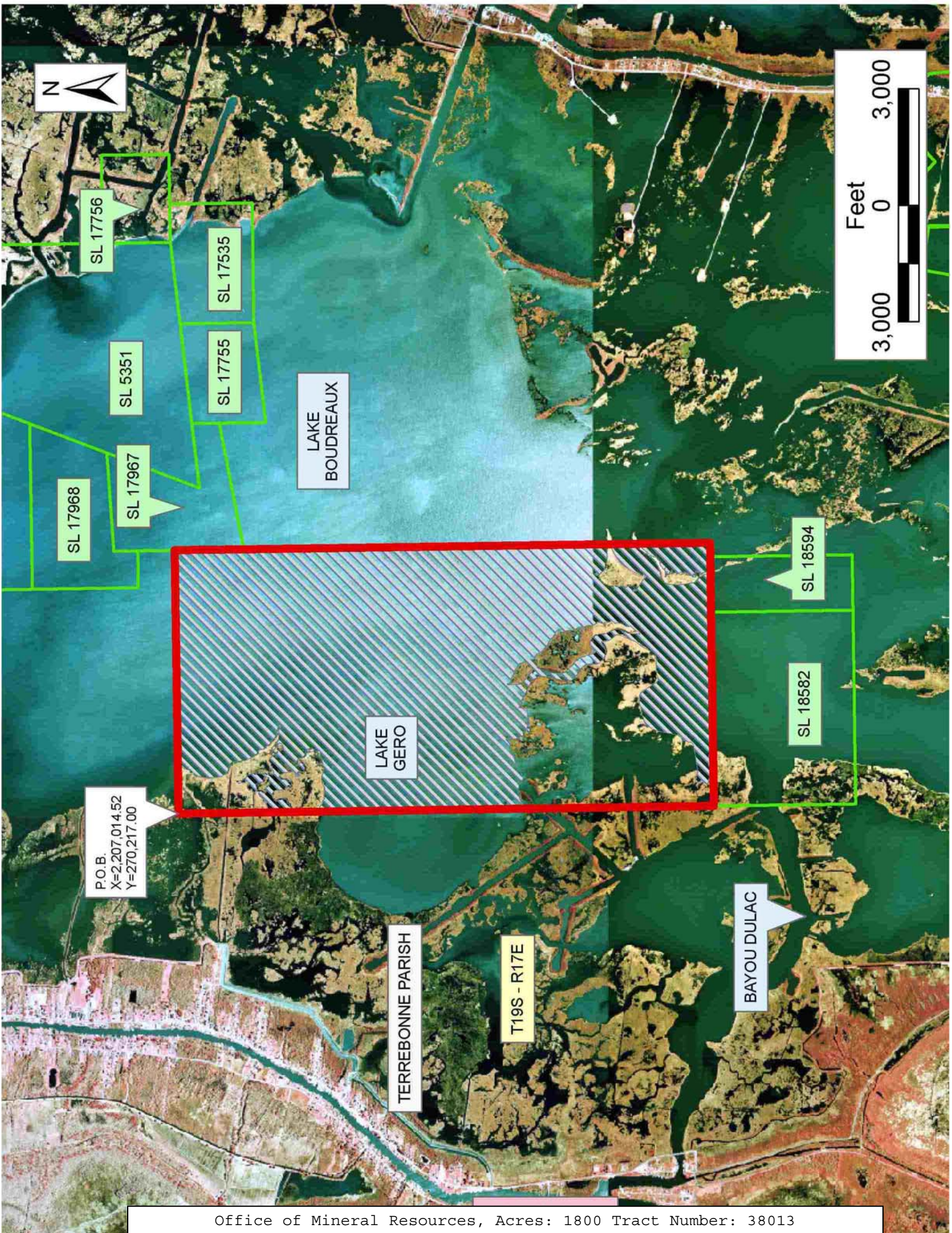


under this lease by the mineral lessee, its agents, successors or assigns, shall not interfere with nor hinder the reasonable surface use by the Department of Natural Resources, its Offices or Commissions, as herein above reserved.

NOTE: The Department of Wildlife and Fisheries has designated certain areas in the coastal waters of the State of Louisiana as Oyster Seed Bed Areas. The exact location of those Seed Bed Areas must be obtained from the Department of Wildlife and Fisheries and any work done under a mineral lease from the State of Louisiana may necessarily be conducted in conformity with the rules and regulations promulgated by the said Department of Wildlife and Fisheries for Oyster Seed Bed Areas.

Applicant: THEOPHILUS OIL GAS & LAND SERVICES LLC

Bidder	Cash Payment	Price/Acre	Rental	Oil	Gas	Other



P.O.B.  
X=2,207,014.52  
Y=270,217.00

Feet  
3,000 0 3,000

LAKE  
BOUDREAUX

LAKE  
GERO

TERREBONNE PARISH

T19S - R17E

BAYOU DULAC

**TRACT 38014 - Terrebonne Parish, Louisiana**

All of the lands now or formerly constituting the beds and bottoms of all water bodies of every nature and description the title of which vests in the State of Louisiana, together with all islands arising therein and other lands formed by accretion or by reliction, where allowed by law, excepting tax adjudicated lands, and not presently under mineral lease on December 14, 2005, situated in Terrebonne Parish, Louisiana, and more particularly described as follows: Beginning at the Southeast corner of State Lease No. 17755, also being the Southwest corner of State Lease No. 17535, having Coordinates of X = 2,219,650.00 and Y = 268,090.00; thence along the South and East lines of said State Lease No. 17535 the following: East 3,090.00 feet and North 2,127.00 feet to its Northeast corner located on the South line of State Lease No. 17756, having Coordinates of X = 2,222,740.00 and Y = 270,217.00; thence East 1,284.87 feet along the South line of said State Lease No. 17756 to its Southeast corner, having Coordinates of X = 2,224,024.87 and Y = 270,217.00, thence South 13,813.04 feet to a point having Coordinates of X = 2,224,024.87 and Y = 256,403.96; thence West 4,374.87 feet to a point having Coordinates of X = 2,219,650.00 and Y = 256,403.96; thence North 11,686.04 feet to the point of beginning, containing approximately **425 acres**, all as more particularly outlined on a plat on file in the Office of Mineral Resources, Department of Natural Resources. All bearings, distances and coordinates are based on Louisiana Coordinate System of 1927, (North or South Zone), where applicable.

NOTE: The above description of the Tract nominated for lease has been provided and corrected, where required, exclusively by the nomination party. Any mineral lease selected from this Tract and awarded by the Louisiana State Mineral Board shall be without warranty of any kind, either express, implied, or statutory, including, but not limited to, the implied warranties of merchantability and fitness for a particular purpose. Should the mineral lease awarded by the Louisiana State Mineral Board be subsequently modified, cancelled or abrogated due to the existence of conflicting leases, operating agreements, private claims or other future obligations or conditions which may affect all or any portion of the leased Tract, it shall not relieve the Lessee of the obligation to pay any bonus due thereon to the Louisiana State Mineral Board, nor shall the Louisiana State Mineral Board be obligated to refund any consideration paid by the Lessor prior to such modification, cancellation, or abrogation, including, but not limited to, bonuses, rentals and royalties.

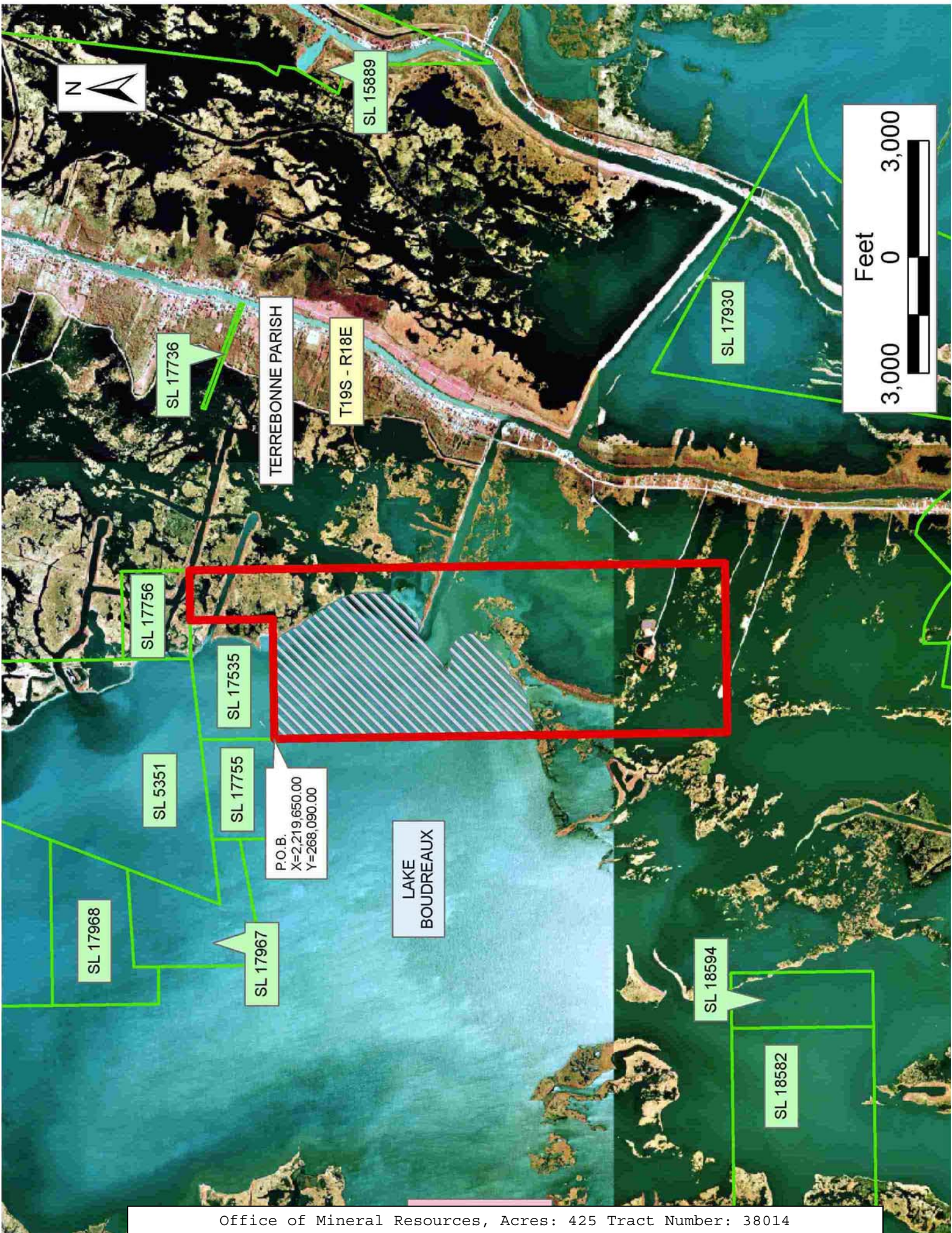
NOTE: The State of Louisiana does hereby reserve, and this lease shall be subject to, the imprescriptible right of surface use in the nature of a servitude in favor of the Department of Natural Resources, including its Offices and Commissions, for the sole purpose of implementing, constructing, servicing and maintaining approved coastal zone management and/or restoration projects. Utilization of any and all rights derived under this lease by the mineral lessee, its agents, successors or assigns, shall not interfere with nor hinder the reasonable surface use by the

Department of Natural Resources, its Offices or Commissions, as herein above reserved.

NOTE: The Department of Wildlife and Fisheries has designated certain areas in the coastal waters of the State of Louisiana as Oyster Seed Bed Areas. The exact location of those Seed Bed Areas must be obtained from the Department of Wildlife and Fisheries and any work done under a mineral lease from the State of Louisiana may necessarily be conducted in conformity with the rules and regulations promulgated by the said Department of Wildlife and Fisheries for Oyster Seed Bed Areas.

Applicant: THEOPHILUS OIL GAS & LAND SERVICES LLC

Bidder	Cash Payment	Price/Acre	Rental	Oil	Gas	Other



**TRACT 38015 - Terrebonne Parish, Louisiana**

All of the lands now or formerly constituting the beds and bottoms of all water bodies of every nature and description the title of which vests in the State of Louisiana, together with all islands arising therein and other lands formed by accretion or by reliction, where allowed by law, excepting tax adjudicated lands, and not presently under mineral lease on December 14, 2005, situated in Terrebonne Parish, Louisiana, and more particularly described as follows: Beginning at the Southwest corner of State Lease No. 17967 having Coordinates of X = 2,213,807.98 and Y = 268,434.80; thence North 79 degrees 52 minutes 33 seconds East 3,314.97 feet along the South line of said State Lease No. 17967 to its Southeast corner located on the West line of State Lease No. 17755, having Coordinates of X = 2,217,071.33 and Y = 269,016.79; thence along the West and South lines of said State Lease No. 17755 the following: South 1,197.65 feet and North 84 degrees 00 minutes 13 seconds East 2,592.86 feet to its Southeast corner, also being the Southwest corner of State Lease No. 17535, having Coordinates of X = 2,219,650.00 and Y = 268,090.00; thence South 11,686.04 feet to a point having Coordinates of X = 2,219,650.00 and Y = 256,403.96; thence West 5,842.02 feet to a point having Coordinates of X = 2,213,807.98 and Y = 256,403.96; thence North 12,030.12 feet to the point of beginning, containing approximately **1,300 acres**, all as more particularly outlined on a plat on file in the Office of Mineral Resources, Department of Natural Resources. All bearings, distances and coordinates are based on Louisiana Coordinate System of 1927, (North or South Zone), where applicable.

NOTE: The above description of the Tract nominated for lease has been provided and corrected, where required, exclusively by the nomination party. Any mineral lease selected from this Tract and awarded by the Louisiana State Mineral Board shall be without warranty of any kind, either express, implied, or statutory, including, but not limited to, the implied warranties of merchantability and fitness for a particular purpose. Should the mineral lease awarded by the Louisiana State Mineral Board be subsequently modified, cancelled or abrogated due to the existence of conflicting leases, operating agreements, private claims or other future obligations or conditions which may affect all or any portion of the leased Tract, it shall not relieve the Lessee of the obligation to pay any bonus due thereon to the Louisiana State Mineral Board, nor shall the Louisiana State Mineral Board be obligated to refund any consideration paid by the Lessor prior to such modification, cancellation, or abrogation, including, but not limited to, bonuses, rentals and royalties.

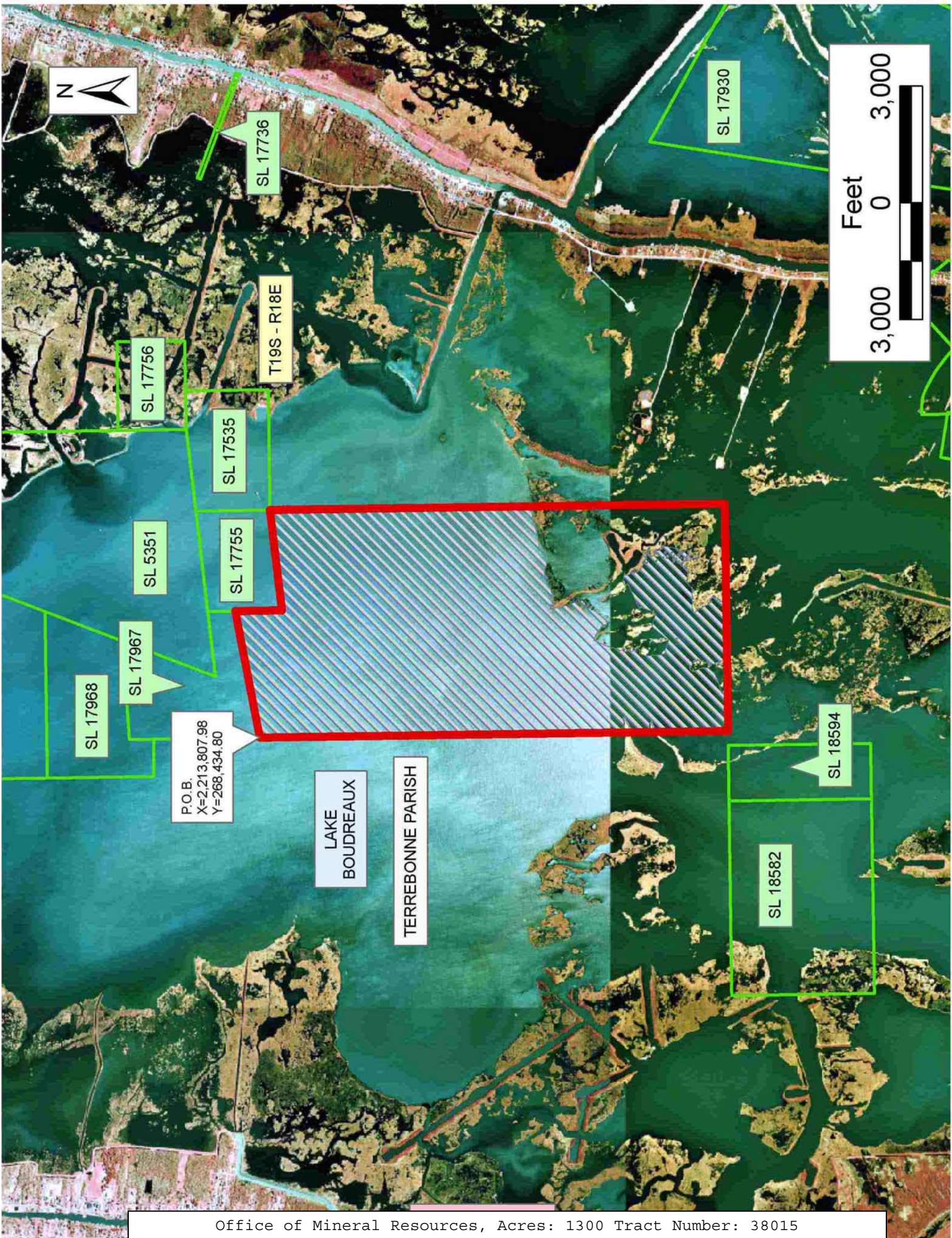
NOTE: The State of Louisiana does hereby reserve, and this lease shall be subject to, the imprescriptible right of surface use in the nature of a servitude in favor of the Department of Natural Resources, including its Offices and Commissions, for the sole purpose of implementing, constructing, servicing and maintaining approved coastal zone management and/or restoration projects. Utilization of any and all rights derived under this lease by the mineral lessee, its agents, successors or assigns,

shall not interfere with nor hinder the reasonable surface use by the Department of Natural Resources, its Offices or Commissions, as herein above reserved.

NOTE: The Department of Wildlife and Fisheries has designated certain areas in the coastal waters of the State of Louisiana as Oyster Seed Bed Areas. The exact location of those Seed Bed Areas must be obtained from the Department of Wildlife and Fisheries and any work done under a mineral lease from the State of Louisiana may necessarily be conducted in conformity with the rules and regulations promulgated by the said Department of Wildlife and Fisheries for Oyster Seed Bed Areas.

Applicant: THEOPHILUS OIL GAS & LAND SERVICES LLC

Bidder	Cash Payment	Price/Acre	Rental	Oil	Gas	Other





**TRACT 38016 - Lafourche Parish, Louisiana**

All of the lands now or formerly constituting the beds and bottoms of all water bodies of every nature and description the title of which vests in the State of Louisiana, together with all islands arising therein and other lands formed by accretion or by reliction, where allowed by law, excepting tax adjudicated lands, and not presently under mineral lease on December 14, 2005, situated in Lafourche Parish, Louisiana, and more particularly described as follows: Beginning at a point having Coordinates of X = 2,405,441.00 and Y = 240,431.00; thence West 9,400.00 feet to a point having Coordinates of X = 2,396,041.00 and Y = 240,431.00; thence North 14,569.00 feet to a point having Coordinates of X = 2,396,041.00 and Y = 255,000.00; thence East approximately 2,007 feet to a point on the West line of State Lease No. 1217, as amended; thence along the boundary of said State Lease No. 1217 the following courses and distances: South approximately 286 feet and East approximately 7,393 feet to a point; thence South approximately 14,283 feet to the point of beginning, **LESS AND EXCEPT** all those portions of State Lease No. 1217, as amended, that may lie within the above described tract, containing approximately **951 acres**, all as more particularly outlined on a plat on file in the Office of Mineral Resources, Department of Natural Resources. All bearings, distances and coordinates are based on Louisiana Coordinate System of 1927, (North or South Zone), where applicable.

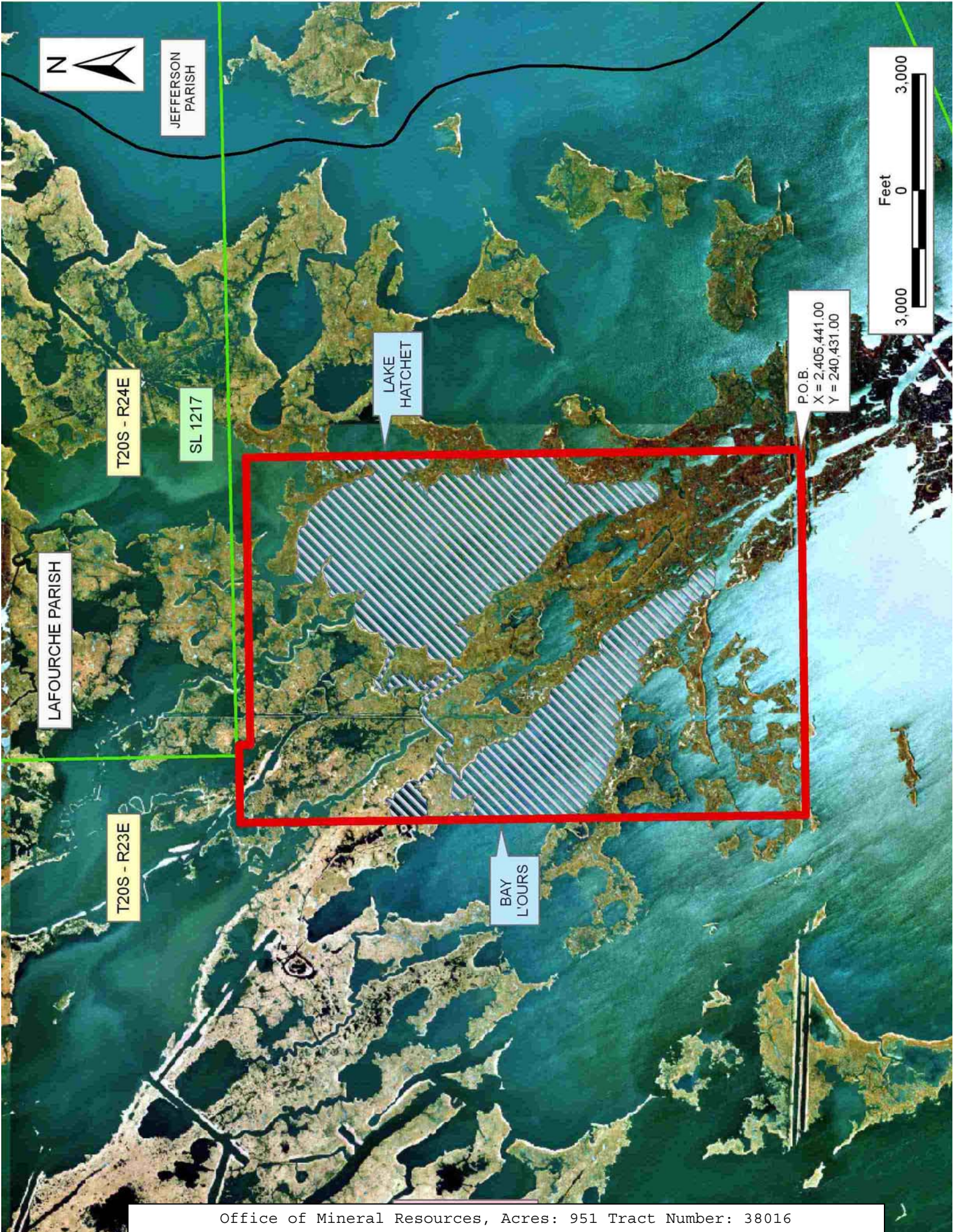
NOTE: The above description of the Tract nominated for lease has been provided and corrected, where required, exclusively by the nomination party. Any mineral lease selected from this Tract and awarded by the Louisiana State Mineral Board shall be without warranty of any kind, either express, implied, or statutory, including, but not limited to, the implied warranties of merchantability and fitness for a particular purpose. Should the mineral lease awarded by the Louisiana State Mineral Board be subsequently modified, cancelled or abrogated due to the existence of conflicting leases, operating agreements, private claims or other future obligations or conditions which may affect all or any portion of the leased Tract, it shall not relieve the Lessee of the obligation to pay any bonus due thereon to the Louisiana State Mineral Board, nor shall the Louisiana State Mineral Board be obligated to refund any consideration paid by the Lessor prior to such modification, cancellation, or abrogation, including, but not limited to, bonuses, rentals and royalties.

NOTE: The State of Louisiana does hereby reserve, and this lease shall be subject to, the imprescriptible right of surface use in the nature of a servitude in favor of the Department of Natural Resources, including its Offices and Commissions, for the sole purpose of implementing, constructing, servicing and maintaining approved coastal zone management and/or restoration projects. Utilization of any and all rights derived under this lease by the mineral lessee, its agents, successors or assigns, shall not interfere with nor hinder the reasonable surface use by the Department of Natural Resources, its Offices or Commissions, as herein above reserved.

NOTE: The Department of Wildlife and Fisheries has designated certain areas in the coastal waters of the State of Louisiana as Oyster Seed Bed Areas. The exact location of those Seed Bed Areas must be obtained from the Department of Wildlife and Fisheries and any work done under a mineral lease from the State of Louisiana may necessarily be conducted in conformity with the rules and regulations promulgated by the said Department of Wildlife and Fisheries for Oyster Seed Bed Areas.

Applicant: RETORT RESOURCES

Bidder	Cash Payment	Price/Acre	Rental	Oil	Gas	Other



**TRACT 38017 - Jefferson and Lafourche Parishes, Louisiana**

All of the lands now or formerly constituting the beds and bottoms of all water bodies of every nature and description the title of which vests in the State of Louisiana, together with all islands arising therein and other lands formed by accretion or by reliction, where allowed by law, excepting tax adjudicated lands, and not presently under mineral lease on December 14, 2005, situated in Jefferson and Lafourche Parishes, Louisiana, and more particularly described as follows: Beginning at a point having Coordinates of X = 2,415,641.00 and Y = 240,431.00; thence West 10,200.00 feet to a point having Coordinates of X = 2,405,441.00 and Y = 240,431.00; thence North approximately 14,283 feet to a point on the South line of State Lease No. 1217, as amended; thence East approximately 10,200 feet along the South line of said State Lease No. 1217 to a point; thence South approximately 14,283 feet to the point of beginning, **LESS AND EXCEPT** all those portions of State Lease No. 1217, as amended, that may lie within the above described tract, containing approximately **2,367 acres**, all as more particularly outlined on a plat on file in the Office of Mineral Resources, Department of Natural Resources. All bearings, distances and coordinates are based on Louisiana Coordinate System of 1927, (North or South Zone), where applicable.

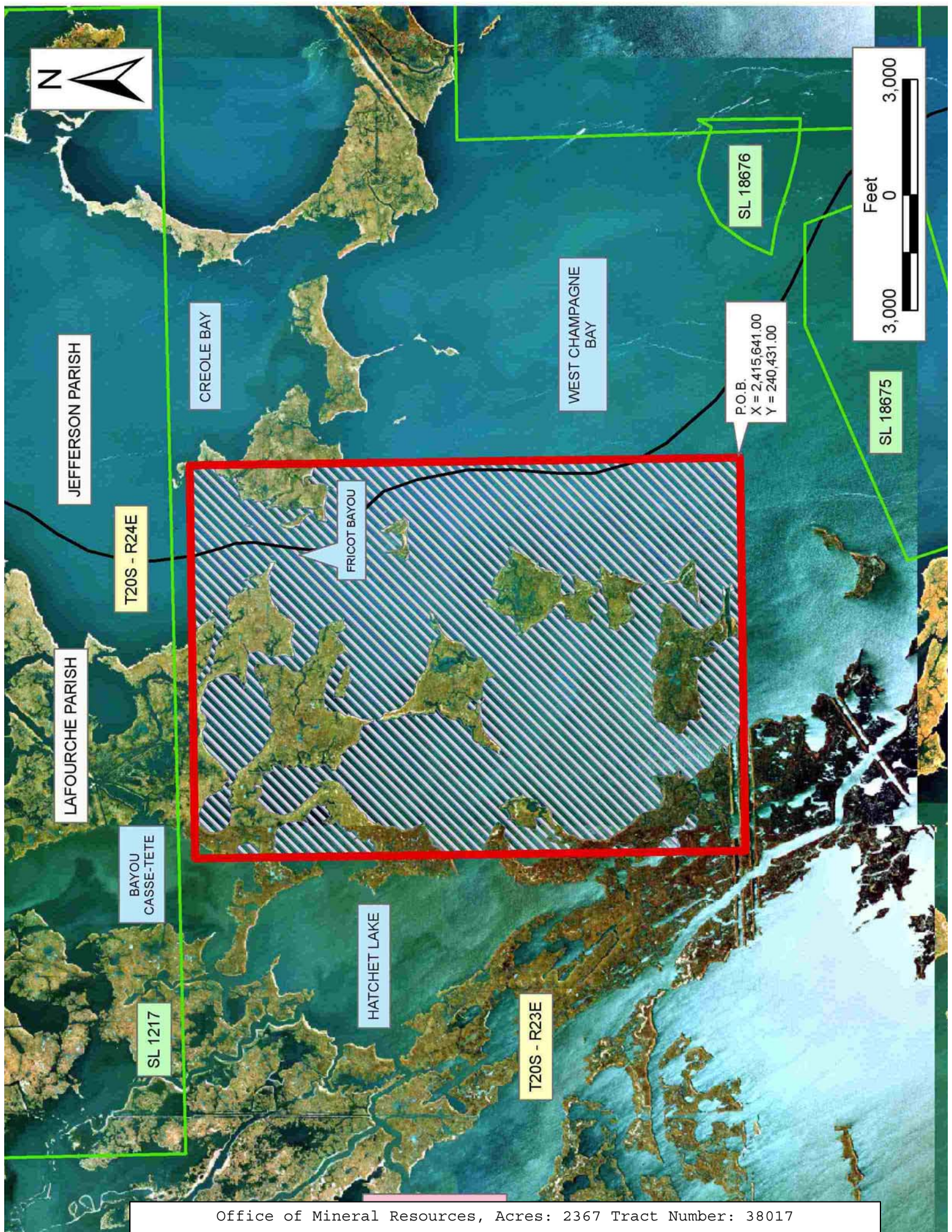
NOTE: The above description of the Tract nominated for lease has been provided and corrected, where required, exclusively by the nomination party. Any mineral lease selected from this Tract and awarded by the Louisiana State Mineral Board shall be without warranty of any kind, either express, implied, or statutory, including, but not limited to, the implied warranties of merchantability and fitness for a particular purpose. Should the mineral lease awarded by the Louisiana State Mineral Board be subsequently modified, cancelled or abrogated due to the existence of conflicting leases, operating agreements, private claims or other future obligations or conditions which may affect all or any portion of the leased Tract, it shall not relieve the Lessee of the obligation to pay any bonus due thereon to the Louisiana State Mineral Board, nor shall the Louisiana State Mineral Board be obligated to refund any consideration paid by the Lessor prior to such modification, cancellation, or abrogation, including, but not limited to, bonuses, rentals and royalties.

NOTE: The State of Louisiana does hereby reserve, and this lease shall be subject to, the imprescriptible right of surface use in the nature of a servitude in favor of the Department of Natural Resources, including its Offices and Commissions, for the sole purpose of implementing, constructing, servicing and maintaining approved coastal zone management and/or restoration projects. Utilization of any and all rights derived under this lease by the mineral lessee, its agents, successors or assigns, shall not interfere with nor hinder the reasonable surface use by the Department of Natural Resources, its Offices or Commissions, as herein above reserved.

NOTE: The Department of Wildlife and Fisheries has designated certain areas in the coastal waters of the State of Louisiana as Oyster Seed Bed Areas. The exact location of those Seed Bed Areas must be obtained from the Department of Wildlife and Fisheries and any work done under a mineral lease from the State of Louisiana may necessarily be conducted in conformity with the rules and regulations promulgated by the said Department of Wildlife and Fisheries for Oyster Seed Bed Areas.

Applicant: RETORT RESOURCES

Bidder	Cash Payment	Price/Acre	Rental	Oil	Gas	Other



JEFFERSON PARISH

CREOLE BAY

WEST CHAMPAGNE BAY

LAFOURCHE PARISH

T20S - R24E

FRICOT BAYOU

BAYOU CASSE-TETE

HATCHET LAKE

T20S - R23E

SL 1217

SL 18676

P.O.B.  
X = 2,415,641.00  
Y = 240,431.00

SL 18675

