

TRACT 37988 - Cameron Parish, Louisiana

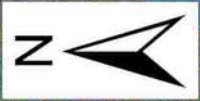
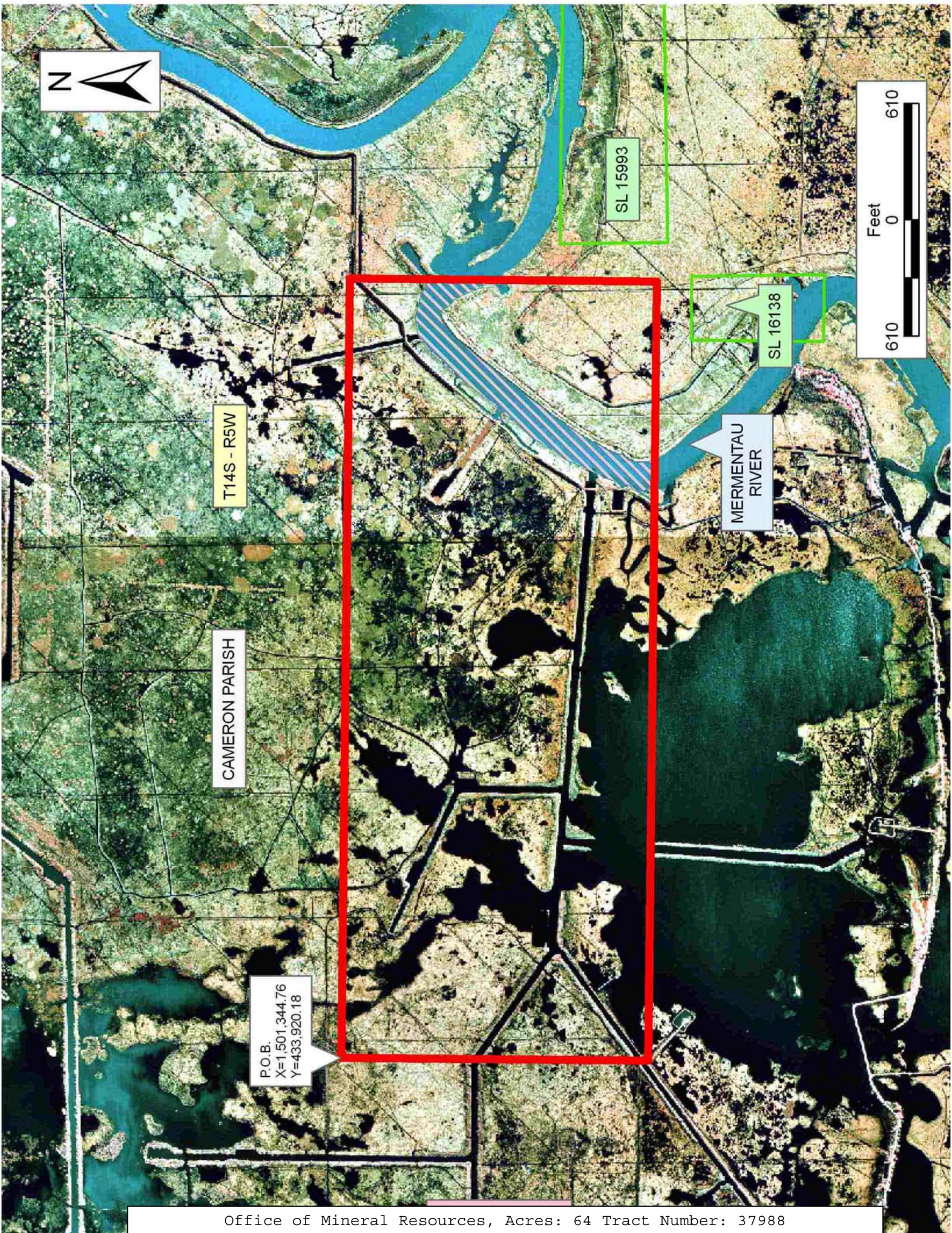
All of the lands now or formerly constituting the beds and bottoms of all water bodies of every nature and description the title of which vests in the State of Louisiana, together with all islands arising therein and other lands formed by accretion or by reliction, where allowed by law, excepting tax adjudicated lands, and not presently under mineral lease on December 14, 2005, situated in Cameron Parish, Louisiana, and more particularly described as follows: Beginning at a point having Coordinates of X = 1,501,344.76 and Y = 433,920.18; thence South 88 degrees 31 minutes 02 seconds East 13,412.07 feet to a point having Coordinates of X = 1,514,752.34 and Y = 433,573.14; thence South 01 degrees 26 minutes 53 seconds West 5,277.28 feet to a point having Coordinates of X = 1,514,618.98 and Y = 428,297.55; thence North 88 degrees 32 minutes 26 seconds West 13,403.67 feet to a point having Coordinates of X = 1,501,219.66 and Y = 428,638.93; thence North 01 degrees 21 minutes 25 seconds East 5,282.73 feet to the point of beginning, containing approximately **64 acres**, all as more particularly outlined on a plat on file in the Office of Mineral Resources, Department of Natural Resources. All bearings, distances and coordinates are based on Louisiana Coordinate System of 1927, (North or South Zone), where applicable.

NOTE: The above description of the Tract nominated for lease has been provided and corrected, where required, exclusively by the nomination party. Any mineral lease selected from this Tract and awarded by the Louisiana State Mineral Board shall be without warranty of any kind, either express, implied, or statutory, including, but not limited to, the implied warranties of merchantability and fitness for a particular purpose. Should the mineral lease awarded by the Louisiana State Mineral Board be subsequently modified, cancelled or abrogated due to the existence of conflicting leases, operating agreements, private claims or other future obligations or conditions which may affect all or any portion of the leased Tract, it shall not relieve the Lessee of the obligation to pay any bonus due thereon to the Louisiana State Mineral Board, nor shall the Louisiana State Mineral Board be obligated to refund any consideration paid by the Lessor prior to such modification, cancellation, or abrogation, including, but not limited to, bonuses, rentals and royalties.

NOTE: The State of Louisiana does hereby reserve, and this lease shall be subject to, the imprescriptible right of surface use in the nature of a servitude in favor of the Department of Natural Resources, including its Offices and Commissions, for the sole purpose of implementing, constructing, servicing and maintaining approved coastal zone management and/or restoration projects. Utilization of any and all rights derived under this lease by the mineral lessee, its agents, successors or assigns, shall not interfere with nor hinder the reasonable surface use by the Department of Natural Resources, its Offices or Commissions, as herein above reserved.

Applicant: KEN SAVAGE & ASSOCIATES, INC.

Bidder	Cash Payment	Price/Acre	Rental	Oil	Gas	Other



T14S - R5W

CAMERON PARISH

MERMENAU RIVER

SL 15993

SL 16138

P.O.B.
X=1,501,344.76
Y=433,920.18

TRACT 37989 - St. Bernard Parish, Louisiana

All of the lands now or formerly constituting the beds and bottoms of all water bodies of every nature and description the title of which vests in the State of Louisiana, together with all islands arising therein and other lands formed by accretion or by reliction, where allowed by law, excepting tax adjudicated lands, and not presently under mineral lease on December 14, 2005, situated in St. Bernard Parish, Louisiana, and more particularly described as follows: Beginning at a point having Coordinates of X = 2,542,964.00 and Y = 414,505.00; thence East 17,892.00 feet to a point having Coordinates of X = 2,560,856.00 and Y = 414,505.00; thence South 18,480.00 feet to a point having Coordinates of X = 2,560,856.00 and Y = 396,025.00; thence West 17,892.00 feet to a point having Coordinates of X = 2,542,964.00 and Y = 396,025.00; thence North 18,480.00 feet to the point of beginning, containing approximately **1,500 acres**, all as more particularly outlined on a plat on file in the Office of Mineral Resources, Department of Natural Resources. All bearings, distances and coordinates are based on Louisiana Coordinate System of 1927, (North or South Zone), where applicable.

NOTE: The above description of the Tract nominated for lease has been provided and corrected, where required, exclusively by the nomination party. Any mineral lease selected from this Tract and awarded by the Louisiana State Mineral Board shall be without warranty of any kind, either express, implied, or statutory, including, but not limited to, the implied warranties of merchantability and fitness for a particular purpose. Should the mineral lease awarded by the Louisiana State Mineral Board be subsequently modified, cancelled or abrogated due to the existence of conflicting leases, operating agreements, private claims or other future obligations or conditions which may affect all or any portion of the leased Tract, it shall not relieve the Lessee of the obligation to pay any bonus due thereon to the Louisiana State Mineral Board, nor shall the Louisiana State Mineral Board be obligated to refund any consideration paid by the Lessor prior to such modification, cancellation, or abrogation, including, but not limited to, bonuses, rentals and royalties.

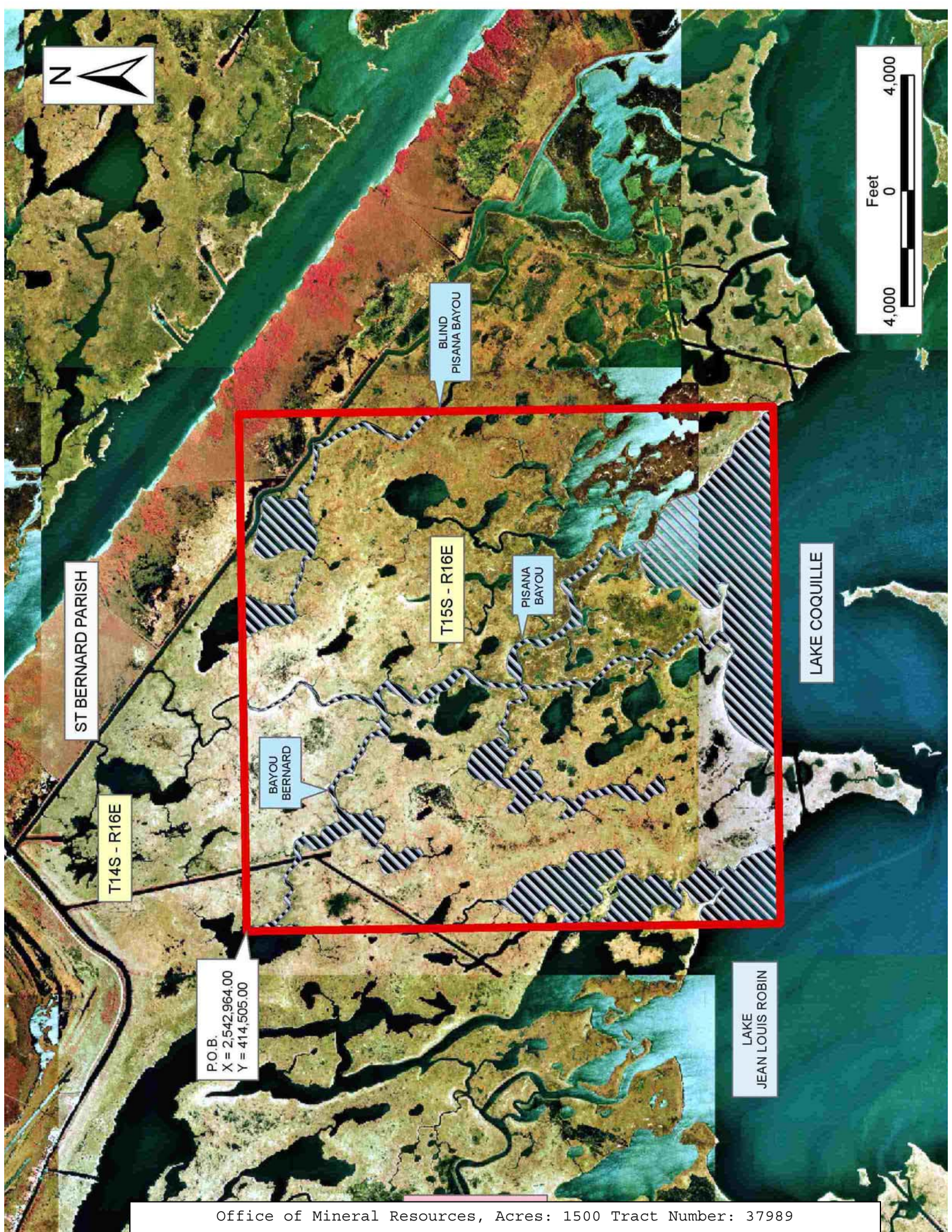
NOTE: The State of Louisiana does hereby reserve, and this lease shall be subject to, the imprescriptible right of surface use in the nature of a servitude in favor of the Department of Natural Resources, including its Offices and Commissions, for the sole purpose of implementing, constructing, servicing and maintaining approved coastal zone management and/or restoration projects. Utilization of any and all rights derived under this lease by the mineral lessee, its agents, successors or assigns, shall not interfere with nor hinder the reasonable surface use by the Department of Natural Resources, its Offices or Commissions, as herein above reserved.

NOTE: The Department of Wildlife and Fisheries has designated certain areas in the coastal waters of the State of Louisiana as Oyster Seed Bed Areas. The exact location of those Seed Bed Areas must be obtained from

the Department of Wildlife and Fisheries and any work done under a mineral lease from the State of Louisiana may necessarily be conducted in conformity with the rules and regulations promulgated by the said Department of Wildlife and Fisheries for Oyster Seed Bed Areas.

Applicant: KARE-SUE ENERGY, INC.

Bidder	Cash Payment	Price/Acre	Rental	Oil	Gas	Other



ST BERNARD PARISH

T14S - R16E

T15S - R16E

PISANA BAYOU

BAYOU BERNARD

BLIND PISANA BAYOU

LAKE COQUILLE

LAKE LOUIS ROBIN

P.O.B.
X = 2,542,964.00
Y = 414,505.00

TRACT 37990 - Cameron Parish, Louisiana

All of the lands now or formerly constituting the beds and bottoms of all water bodies of every nature and description the title of which vests in the State of Louisiana, together with all islands arising therein and other lands formed by accretion or by reliction, where allowed by law, excepting tax adjudicated lands, and not presently under mineral lease on December 14, 2005, situated in Cameron Parish, Louisiana, and more particularly described as follows: Beginning at a point having Coordinates of X = 1,500,966.67 and Y = 418,085.52; thence North 88 degrees 33 minutes 57 seconds West 8,033.99 feet to a point having Coordinates of X = 1,492,935.20 and Y = 418,286.60; thence North 88 degrees 35 minutes 37 seconds West 5,279.55 feet to a point having Coordinates of X = 1,487,657.25 and Y = 418,416.19; thence North 01 degrees 16 minutes 23 seconds East 10,548.33 feet to a point having Coordinates of X = 1,487,891.60 and Y = 428,961.91; thence South 88 degrees 43 minutes 13 seconds East 5,288.12 feet to a point having Coordinates of X = 1,493,178.40 and Y = 428,843.80; thence South 88 degrees 32 minutes 26 seconds East 8,043.87 feet to a point having Coordinates of X = 1,501,219.66 and Y = 428,638.93; thence South 01 degrees 22 minutes 43 seconds West 5,278.22 feet to a point having Coordinates of X = 1,501,092.67 and Y = 423,362.24; thence South 01 degrees 22 minutes 04 seconds West 5,278.22 feet to the point of beginning, containing approximately **85 acres**, all as more particularly outlined on a plat on file in the Office of Mineral Resources, Department of Natural Resources. All bearings, distances and coordinates are based on Louisiana Coordinate System of 1927, (North or South Zone), where applicable.

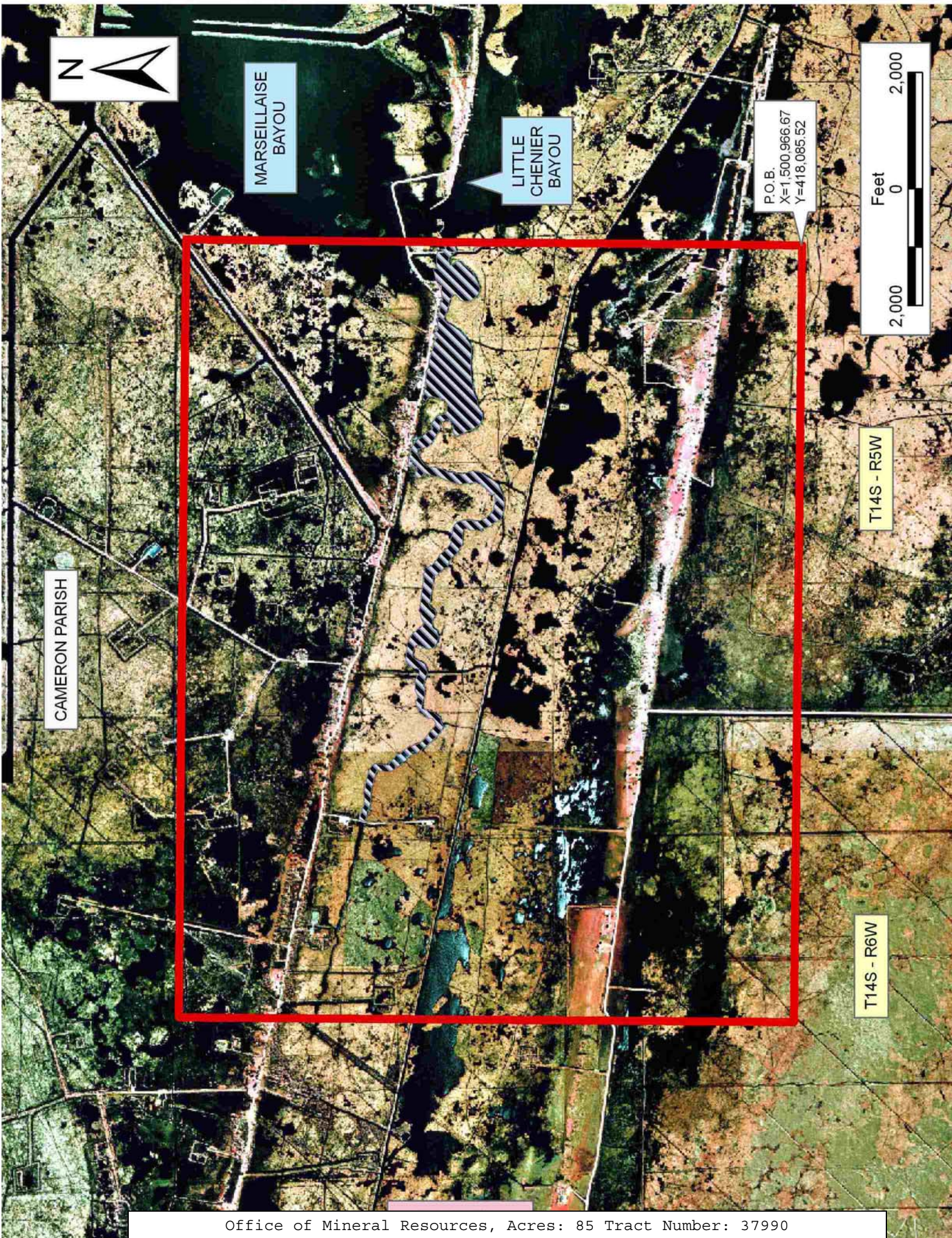
NOTE: The above description of the Tract nominated for lease has been provided and corrected, where required, exclusively by the nomination party. Any mineral lease selected from this Tract and awarded by the Louisiana State Mineral Board shall be without warranty of any kind, either express, implied, or statutory, including, but not limited to, the implied warranties of merchantability and fitness for a particular purpose. Should the mineral lease awarded by the Louisiana State Mineral Board be subsequently modified, cancelled or abrogated due to the existence of conflicting leases, operating agreements, private claims or other future obligations or conditions which may affect all or any portion of the leased Tract, it shall not relieve the Lessee of the obligation to pay any bonus due thereon to the Louisiana State Mineral Board, nor shall the Louisiana State Mineral Board be obligated to refund any consideration paid by the Lessor prior to such modification, cancellation, or abrogation, including, but not limited to, bonuses, rentals and royalties.

NOTE: The State of Louisiana does hereby reserve, and this lease shall be subject to, the imprescriptible right of surface use in the nature of a servitude in favor of the Department of Natural Resources, including its Offices and Commissions, for the sole purpose of implementing, constructing, servicing and maintaining approved coastal zone management and/or restoration projects. Utilization of any and all rights derived

under this lease by the mineral lessee, its agents, successors or assigns, shall not interfere with nor hinder the reasonable surface use by the Department of Natural Resources, its Offices or Commissions, as herein above reserved.

Applicant: KEN SAVAGE & ASSOCIATES, INC.

Bidder	Cash Payment	Price/Acre	Rental	Oil	Gas	Other



MARSEILLAISE
BAYOU

LITTLE
CHENIER
BAYOU

P.O.B.
X=1,500,966.67
Y=418,085.52



CAMERON PARISH

T14S - R5W

T14S - R6W

TRACT 37991 - Cameron Parish, Louisiana

All of the lands now or formerly constituting the beds and bottoms of all water bodies of every nature and description the title of which vests in the State of Louisiana, together with all islands arising therein and other lands formed by accretion or by reliction, where allowed by law, excepting tax adjudicated lands, and not presently under mineral lease on December 14, 2005, situated in Cameron Parish, Louisiana, and more particularly described as follows: Beginning at a point having Coordinates of X = 1,500,966.67 and Y = 418,085.52; thence North 01 degrees 22 minutes 04 seconds East 5,278.23 feet to a point having Coordinates of X = 1,501,092.67 and Y = 423,362.24; thence North 01 degrees 22 minutes 43 seconds East 5,278.22 feet to a point having Coordinates of X = 1,501,219.66 and Y = 428,638.93; thence South 88 degrees 32 minutes 26 seconds East 13,403.67 feet to a point having Coordinates of X = 1,514,618.98 and Y = 428,297.55; thence South 01 degrees 26 minutes 53 seconds West 604.25 feet to a point on the North line of State Lease No. 16138, as amended, having Coordinates of X = 1,514,603.71 and Y = 427,693.50; thence along the boundary of said State Lease No. 16138, as amended, the following courses: North 88 degrees 33 minutes 21 seconds West 1,000.25 feet to its Northwest corner having Coordinates of X = 1,513,603.78 and Y = 427,718.71, South 01 degrees 26 minutes 39 seconds West 2,275.31 feet to its Southwest corner having Coordinates of X = 1,513,546.43 and Y = 425,444.12, and South 88 degrees 33 minutes 21 seconds East 1,000.10 feet to a point having Coordinates of X = 1,514,546.22 and Y = 425,418.92; thence South 01 degrees 26 minutes 53 seconds West 2,395.72 feet to a point having Coordinates of X = 1,514,485.68 and Y = 423,023.96; thence South 01 degrees 26 minutes 53 seconds West 5,275.27 feet to a point having Coordinates of X = 1,514,352.37 and Y = 417,750.38; thence North 88 degrees 33 minutes 57 seconds West 13,389.89 feet to the point of beginning, containing approximately **353 acres**, all as more particularly outlined on a plat on file in the Office of Mineral Resources, Department of Natural Resources. All bearings, distances and coordinates are based on Louisiana Coordinate System of 1927, (North or South Zone), where applicable.

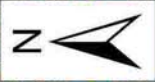
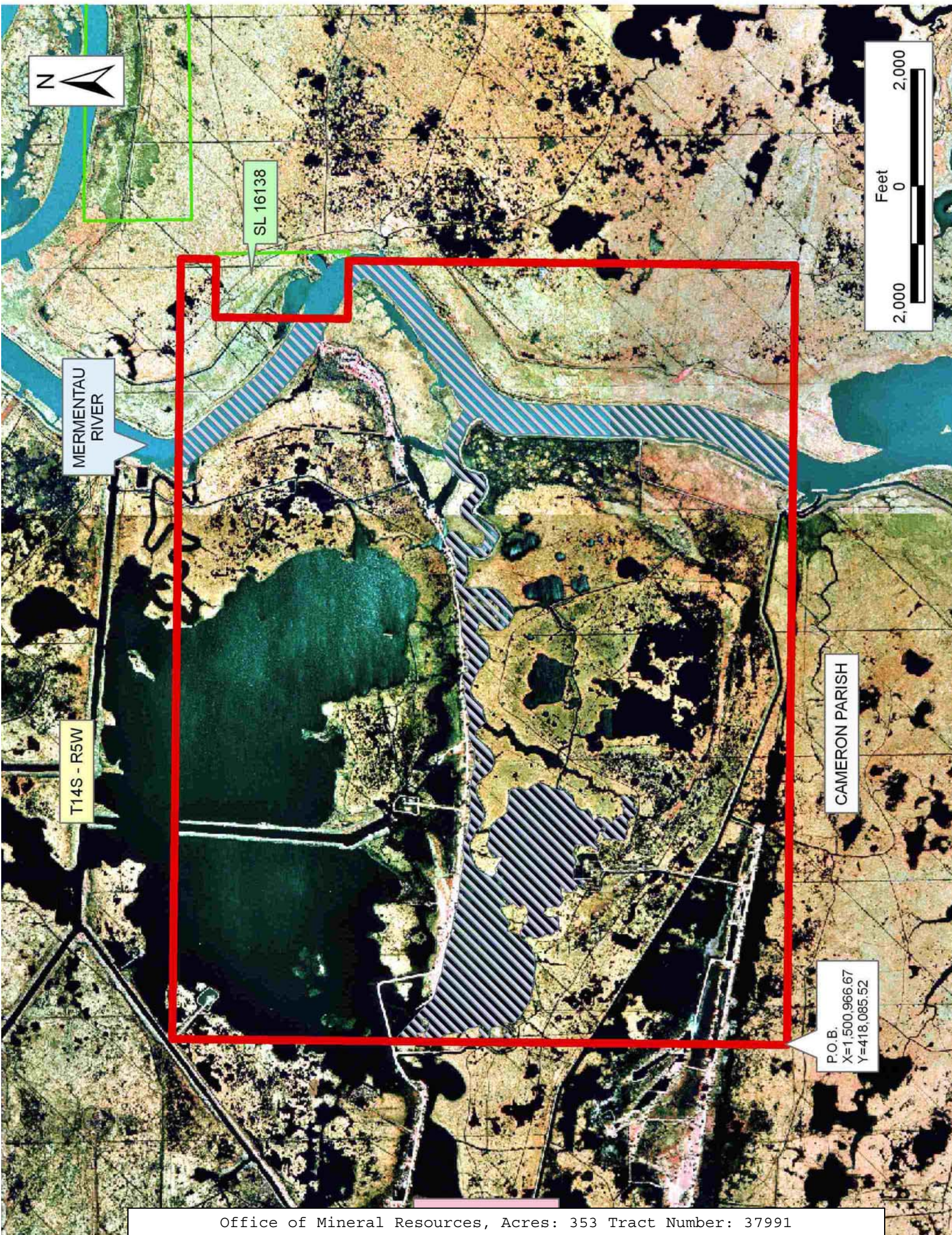
NOTE: The above description of the Tract nominated for lease has been provided and corrected, where required, exclusively by the nomination party. Any mineral lease selected from this Tract and awarded by the Louisiana State Mineral Board shall be without warranty of any kind, either express, implied, or statutory, including, but not limited to, the implied warranties of merchantability and fitness for a particular purpose. Should the mineral lease awarded by the Louisiana State Mineral Board be subsequently modified, cancelled or abrogated due to the existence of conflicting leases, operating agreements, private claims or other future obligations or conditions which may affect all or any portion of the leased Tract, it shall not relieve the Lessee of the obligation to pay any bonus due thereon to the Louisiana State Mineral Board, nor shall the Louisiana State Mineral Board be obligated to refund any consideration

paid by the Lessor prior to such modification, cancellation, or abrogation, including, but not limited to, bonuses, rentals and royalties.

NOTE: The State of Louisiana does hereby reserve, and this lease shall be subject to, the imprescriptible right of surface use in the nature of a servitude in favor of the Department of Natural Resources, including its Offices and Commissions, for the sole purpose of implementing, constructing, servicing and maintaining approved coastal zone management and/or restoration projects. Utilization of any and all rights derived under this lease by the mineral lessee, its agents, successors or assigns, shall not interfere with nor hinder the reasonable surface use by the Department of Natural Resources, its Offices or Commissions, as herein above reserved.

Applicant: KEN SAVAGE & ASSOCIATES, INC.

Bidder	Cash Payment	Price/Acre	Rental	Oil	Gas	Other



SL 16138

MERMENTAU RIVER

T14S - R5W

CAMERON PARISH

P.O.B.
X=1,500,966.67
Y=418,085.52

TRACT 37992 - Portion of Block 47, Chandeleur Sound Area, St. Bernard Parish, Louisiana

All of the lands now or formerly constituting the beds and bottoms of all water bodies of every nature and description the title of which vests in the State of Louisiana, together with all islands arising therein and other lands formed by accretion or by reliction, where allowed by law, excepting tax adjudicated lands, and not presently under mineral lease on December 14, 2005, situated in St. Bernard Parish, Louisiana, and more particularly described as follows: Beginning at a point located on the North line of Block 47, Chandeleur Sound Area, having Coordinates of X = 2,593,810.00 and Y = 410,830.00; thence South 8,239.79 feet to a point on the North line of State Lease No. 18186 having Coordinates of X = 2,593,810.00 and Y = 402,590.21; thence along the boundary of said State Lease No. 18186 the following courses: West 2,710.00 feet and South 396.52 feet to the Northeast corner of State Lease No. 18185 and the Northwest corner of State Lease No. 15485, having Coordinates of X = 2,591,100.00 and Y = 402,193.69; thence along the boundary of said State Lease No. 18185 the following courses: South 83 degrees 44 minutes 51 seconds West 125.74 feet, South 78 degrees 51 minutes 17 seconds West 1,218.05 feet, South 78 degrees 51 minutes 18 seconds West 489.15 feet, South 73 degrees 32 minutes 24 seconds West 1,147.01 feet, and South 64 degrees 10 minutes 43 seconds West 555.46 feet to its Northwest corner and a point on the East boundary of State Lease No. 18072 having Coordinates of X = 2,587,700.00 and Y = 401,283.06; thence along the boundary of said State Lease No. 18072 the following courses: North 1,219.12 feet and South 88 degrees 31 minutes 00 seconds West 3,949.32 feet to its Northwest corner and a point on the East boundary of State Lease No. 18463 having Coordinates of X = 2,583,752.00 and Y = 402,399.95; thence along the boundary of said State Lease No. 18463 the following courses: North 115.05 feet and West 8,422.00 feet to a point having Coordinates of X = 2,575,330.00 and Y = 402,515.00; thence North 2,718.00 feet to a point having Coordinates of X = 2,575,330.00 and Y = 405,233.00; thence East 4,006.00 feet to a point having Coordinates of X = 2,579,336.00 and Y = 405,233.00; thence North 5,597.00 feet to a point having Coordinates of X = 2,579,336.00 and Y = 410,830.00; thence East 14,474.00 feet to the point of beginning, containing approximately **902 acres**, all as more particularly outlined on a plat on file in the Office of Mineral Resources, Department of Natural Resources. All bearings, distances and coordinates are based on Louisiana Coordinate System of 1927, (North or South Zone), where applicable.

NOTE: The above description of the Tract nominated for lease has been provided and corrected, where required, exclusively by the nomination party. Any mineral lease selected from this Tract and awarded by the Louisiana State Mineral Board shall be without warranty of any kind, either express, implied, or statutory, including, but not limited to, the implied warranties of merchantability and fitness for a particular purpose. Should the mineral lease awarded by the Louisiana State Mineral Board be subsequently modified, cancelled or abrogated due to the

existence of conflicting leases, operating agreements, private claims or other future obligations or conditions which may affect all or any portion of the leased Tract, it shall not relieve the Lessee of the obligation to pay any bonus due thereon to the Louisiana State Mineral Board, nor shall the Louisiana State Mineral Board be obligated to refund any consideration paid by the Lessor prior to such modification, cancellation, or abrogation, including, but not limited to, bonuses, rentals and royalties.

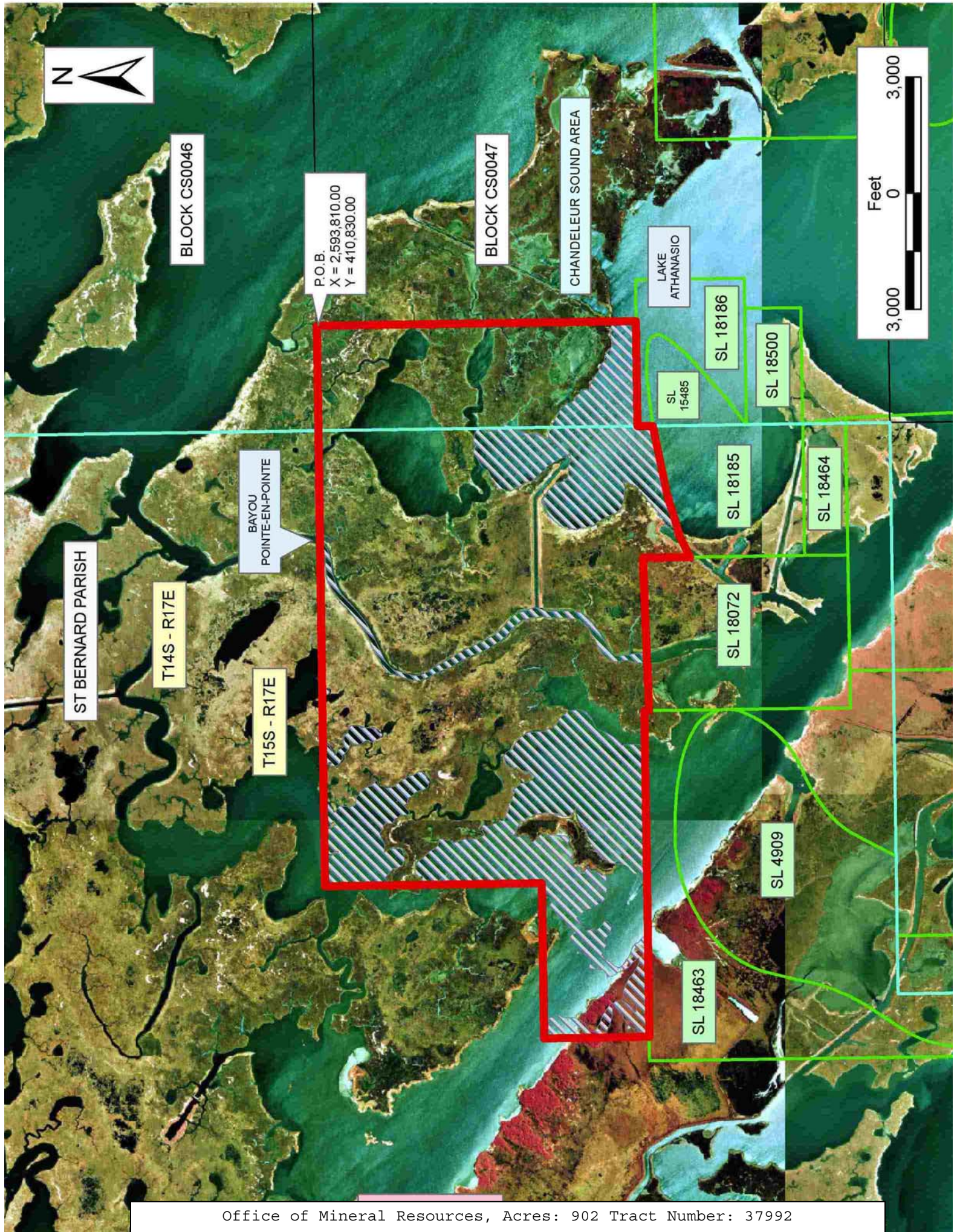
NOTE: The Office of Mineral Resources will require a minimum bonus of \$230 per acre and a minimum royalty of 23%.

NOTE: The State of Louisiana does hereby reserve, and this lease shall be subject to, the imprescriptible right of surface use in the nature of a servitude in favor of the Department of Natural Resources, including its Offices and Commissions, for the sole purpose of implementing, constructing, servicing and maintaining approved coastal zone management and/or restoration projects. Utilization of any and all rights derived under this lease by the mineral lessee, its agents, successors or assigns, shall not interfere with nor hinder the reasonable surface use by the Department of Natural Resources, its Offices or Commissions, as herein above reserved.

NOTE: The Department of Wildlife and Fisheries has designated certain areas in the coastal waters of the State of Louisiana as Oyster Seed Bed Areas. The exact location of those Seed Bed Areas must be obtained from the Department of Wildlife and Fisheries and any work done under a mineral lease from the State of Louisiana may necessarily be conducted in conformity with the rules and regulations promulgated by the said Department of Wildlife and Fisheries for Oyster Seed Bed Areas.

Applicant: KARE-SUE ENERGY, INC.

Bidder	Cash Payment	Price/Acre	Rental	Oil	Gas	Other



BLOCK CS0046

BLOCK CS0047

CHANDELEUR SOUND AREA

LAKE
ATHANASIO

BAYOU
POINTE-EN-POINTE

ST BERNARD PARISH

T14S - R17E

T15S - R17E

SL
15485

SL 18186

SL 18500

SL 18185

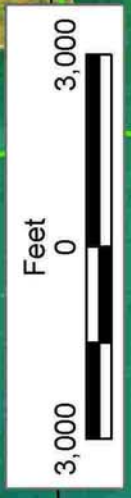
SL 18464

SL 18072

SL 4909

SL 18463

P.O.B.
X = 2,593,810.00
Y = 410,830.00



TRACT 37993 - Portion of Block 47, Chandeleur Sound Area, St. Bernard Parish, Louisiana

All of the lands now or formerly constituting the beds and bottoms of all water bodies of every nature and description the title of which vests in the State of Louisiana, together with all islands arising therein and other lands formed by accretion or by reliction, where allowed by law, excepting tax adjudicated lands, and not presently under mineral lease on December 14, 2005, situated in St. Bernard Parish, Louisiana, and more particularly described as follows: Beginning at a point on the North line of Block 47, Chandeleur Sound Area having Coordinates of X = 2,593,810.00 and Y = 410,830.00; thence East 4,665.00 feet on the North line of said Block 47 to a point having Coordinates of X = 2,598,475.00 and Y = 410,830.00; thence South 8,830.00 feet to the Northwest corner of State Lease No. 4039 as amended having Coordinates of X = 2,598,475.00 and Y = 402,000.00; thence West 3,597.49 feet to a point on the East line of State Lease No. 18186 having Coordinates of X = 2,594,877.51 and Y = 402,000.00; thence along the boundary of State Lease No. 18186 the following courses: North 590.21 feet and West 1,067.51 feet to a point having Coordinates of X = 2,593,810.00 and Y = 402,590.21; thence North 8,239.79 feet to the point of beginning, containing approximately **270 acres**, all as more particularly outlined on a plat on file in the Office of Mineral Resources, Department of Natural Resources. All bearings, distances and coordinates are based on Louisiana Coordinate System of 1927, (North or South Zone), where applicable.

NOTE: The above description of the Tract nominated for lease has been provided and corrected, where required, exclusively by the nomination party. Any mineral lease selected from this Tract and awarded by the Louisiana State Mineral Board shall be without warranty of any kind, either express, implied, or statutory, including, but not limited to, the implied warranties of merchantability and fitness for a particular purpose. Should the mineral lease awarded by the Louisiana State Mineral Board be subsequently modified, cancelled or abrogated due to the existence of conflicting leases, operating agreements, private claims or other future obligations or conditions which may affect all or any portion of the leased Tract, it shall not relieve the Lessee of the obligation to pay any bonus due thereon to the Louisiana State Mineral Board, nor shall the Louisiana State Mineral Board be obligated to refund any consideration paid by the Lessor prior to such modification, cancellation, or abrogation, including, but not limited to, bonuses, rentals and royalties.

NOTE: The Office of Mineral Resources will require a minimum bonus of \$230 per acre and a minimum royalty of 23%.

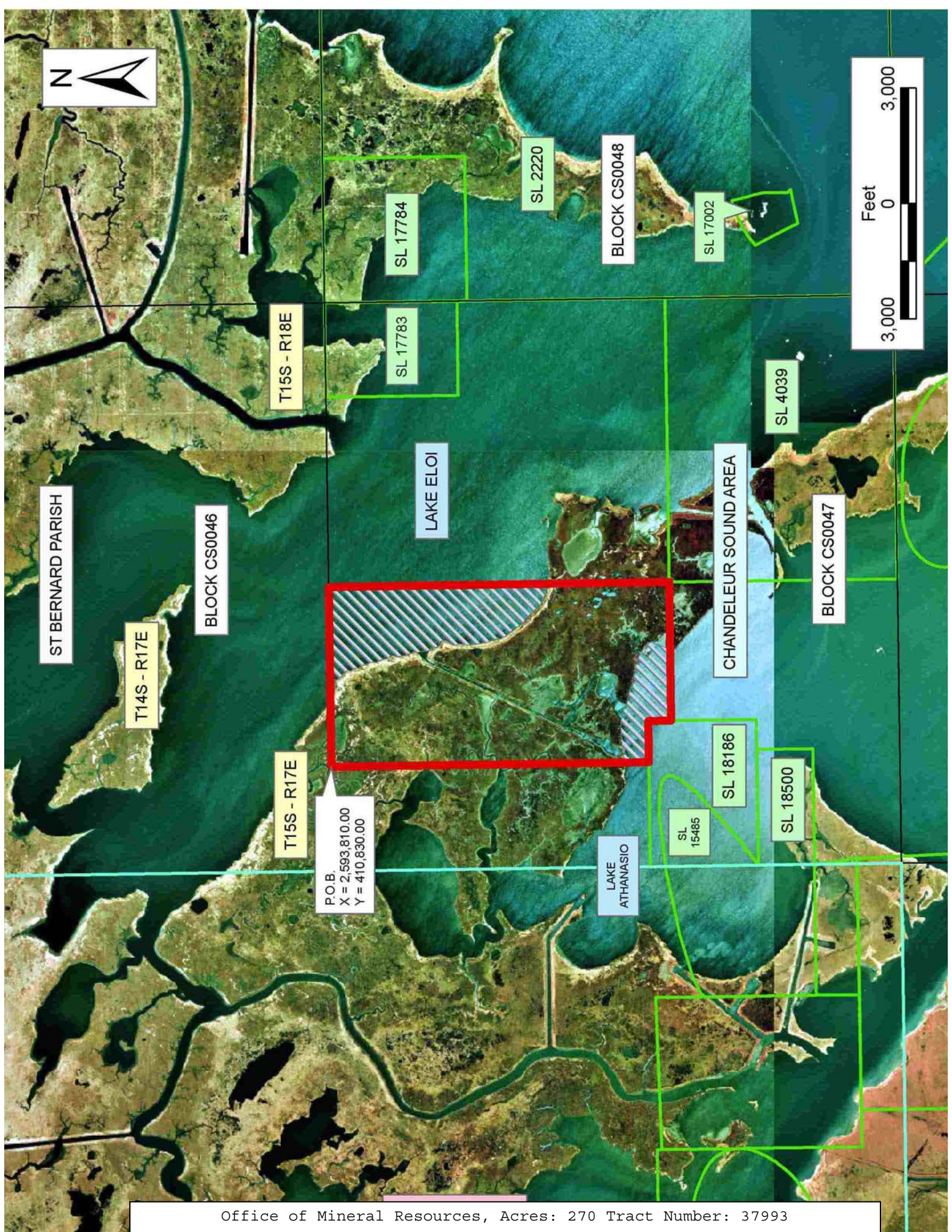
NOTE: The State of Louisiana does hereby reserve, and this lease shall be subject to, the imprescriptible right of surface use in the nature of a servitude in favor of the Department of Natural Resources, including its Offices and Commissions, for the sole purpose of implementing, constructing, servicing and maintaining approved coastal zone management

and/or restoration projects. Utilization of any and all rights derived under this lease by the mineral lessee, its agents, successors or assigns, shall not interfere with nor hinder the reasonable surface use by the Department of Natural Resources, its Offices or Commissions, as herein above reserved.

NOTE: The Department of Wildlife and Fisheries has designated certain areas in the coastal waters of the State of Louisiana as Oyster Seed Bed Areas. The exact location of those Seed Bed Areas must be obtained from the Department of Wildlife and Fisheries and any work done under a mineral lease from the State of Louisiana may necessarily be conducted in conformity with the rules and regulations promulgated by the said Department of Wildlife and Fisheries for Oyster Seed Bed Areas.

Applicant: KARE-SUE ENERGY, INC.

Bidder	Cash Payment	Price/Acre	Rental	Oil	Gas	Other



P.O.B.
 X = 2,593,810.00
 Y = 410,830.00

TRACT 37994 - Portion of Block 47, Chandeleur Sound Area, St. Bernard Parish, Louisiana

All of the lands now or formerly constituting the beds and bottoms of all water bodies of every nature and description the title of which vests in the State of Louisiana, together with all islands arising therein and other lands formed by accretion or by reliction, where allowed by law, excepting tax adjudicated lands, and not presently under mineral lease on December 14, 2005, situated in St. Bernard Parish, Louisiana, and more particularly described as follows: Beginning at a point on the North line of Block 47, Chandeleur Sound Area, having Coordinates of X = 2,598,475.00 and Y = 410,830.00; thence East 4,925.00 feet along the North line of said Block 47 to the Northwest corner of State Lease No. 17783 having Coordinates of X = 2,603,400.00 and Y = 410,830.00; thence along the boundary of said State Lease No. 17783 the following course: South 3,430.00 feet to its Southwest corner having Coordinates of X = 2,603,400.00 and Y = 407,400.00 and East 2,450.00 feet to its Southeast corner, said corner also being a point on the West line of State Lease No. 17784, having Coordinates of X = 2,605,850.00 and Y = 407,400.00; thence South 259.00 feet along the West line of said State Lease No. 17784 to its Southwest corner, said corner also being the most Westerly Northwest corner of State Lease No. 2220, having Coordinates of X = 2,605,850.00 and Y = 407,141.00; thence South 5,141.00 feet along the West line of said State Lease No. 2220 to the Northeast corner of State Lease No. 4039, as amended, having Coordinates of X = 2,605,850.00 and Y = 402,000.00; thence West 7,375.00 feet along the North line of said State Lease No. 4039, as amended, to its Northwest corner having Coordinates of X = 2,598,475.00 and Y = 402,000.00; thence North 8,830.00 feet to the point of beginning, containing approximately **1,148 acres**, all as more particularly outlined on a plat on file in the Office of Mineral Resources, Department of Natural Resources. All bearings, distances and coordinates are based on Louisiana Coordinate System of 1927, (North or South Zone), where applicable.

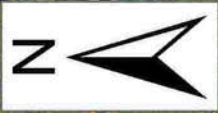
NOTE: The above description of the Tract nominated for lease has been provided and corrected, where required, exclusively by the nomination party. Any mineral lease selected from this Tract and awarded by the Louisiana State Mineral Board shall be without warranty of any kind, either express, implied, or statutory, including, but not limited to, the implied warranties of merchantability and fitness for a particular purpose. Should the mineral lease awarded by the Louisiana State Mineral Board be subsequently modified, cancelled or abrogated due to the existence of conflicting leases, operating agreements, private claims or other future obligations or conditions which may affect all or any portion of the leased Tract, it shall not relieve the Lessee of the obligation to pay any bonus due thereon to the Louisiana State Mineral Board, nor shall the Louisiana State Mineral Board be obligated to refund any consideration paid by the Lessor prior to such modification, cancellation, or abrogation, including, but not limited to, bonuses, rentals and royalties.

NOTE: The State of Louisiana does hereby reserve, and this lease shall be subject to, the imprescriptible right of surface use in the nature of a servitude in favor of the Department of Natural Resources, including its Offices and Commissions, for the sole purpose of implementing, constructing, servicing and maintaining approved coastal zone management and/or restoration projects. Utilization of any and all rights derived under this lease by the mineral lessee, its agents, successors or assigns, shall not interfere with nor hinder the reasonable surface use by the Department of Natural Resources, its Offices or Commissions, as herein above reserved.

NOTE: The Department of Wildlife and Fisheries has designated certain areas in the coastal waters of the State of Louisiana as Oyster Seed Bed Areas. The exact location of those Seed Bed Areas must be obtained from the Department of Wildlife and Fisheries and any work done under a mineral lease from the State of Louisiana may necessarily be conducted in conformity with the rules and regulations promulgated by the said Department of Wildlife and Fisheries for Oyster Seed Bed Areas.

Applicant: STEPHEN M. JENKINS, INC.

Bidder	Cash Payment	Price/Acre	Rental	Oil	Gas	Other



T15S - R18E

SL 17784

SL 2220

BLOCK CS0048

CHANDELEUR SOUND AREA

SL 17783

SL 4039

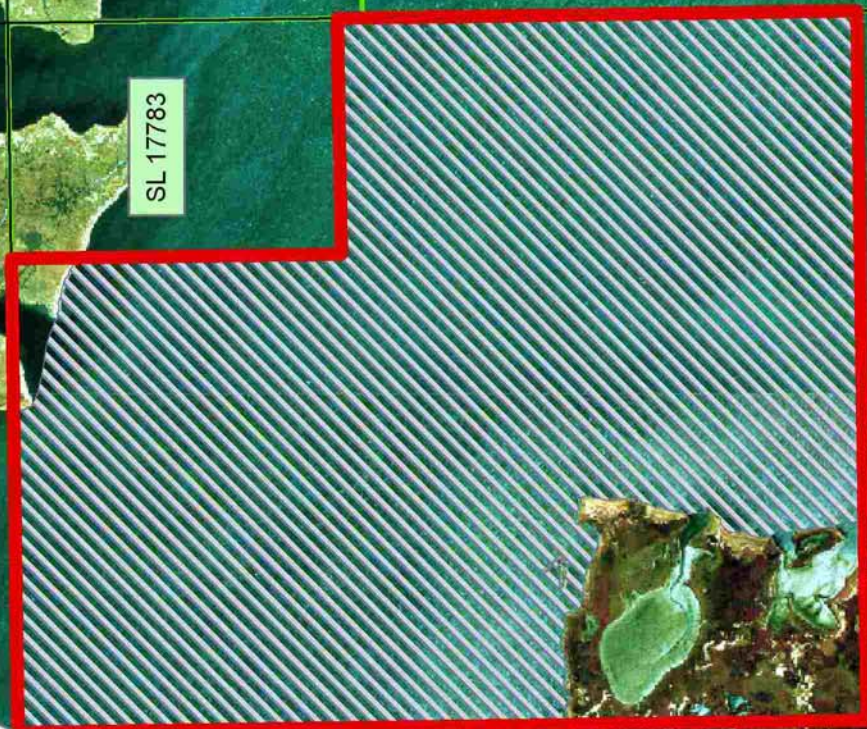
P.O.B.
X=2,598,475.00
Y=410,830.00

ST BERNARD PARISH

BLOCK CS0047

T15S - R17E

SL 18186



TRACT 37995 - St. Bernard Parish, Louisiana

All of the lands now or formerly constituting the beds and bottoms of all water bodies of every nature and description the title of which vests in the State of Louisiana, together with all islands arising therein and other lands formed by accretion or by reliction, where allowed by law, excepting tax adjudicated lands, and not presently under mineral lease on December 14, 2005, situated in St. Bernard Parish, Louisiana, and more particularly described as follows: Beginning at a point having Coordinates of X = 2,560,856.00 and Y = 389,233.00; thence North 16,000.00 feet to a point having Coordinates of X = 2,560,856.00 and Y = 405,233.00; thence East 14,474.00 feet to a point having Coordinates of X = 2,575,330.00 and Y = 405,233.00; thence South 2,718.00 feet to a point on the North line of State Lease No. 18463 having Coordinates of X = 2,575,330.00 and Y = 402,515.00; thence along the boundary of said State Lease No. 18463 the following courses: West 612.00 feet and South 11,736.00 feet to its Southwest corner, also being the Northwest corner of State Lease No. 18465 having Coordinates of X = 2,574,718.00 and Y = 390,779.00; thence South 1,546.00 feet along the West line of said State Lease No. 18465 to its Southwest corner having Coordinates of X = 2,574,718.00 and Y = 389,233.00; thence West 13,862.00 feet to the point of beginning, containing approximately **2,408 acres**, all as more particularly outlined on a plat on file in the Office of Mineral Resources, Department of Natural Resources. All bearings, distances and coordinates are based on Louisiana Coordinate System of 1927, (North or South Zone), where applicable.

NOTE: The above description of the Tract nominated for lease has been provided and corrected, where required, exclusively by the nomination party. Any mineral lease selected from this Tract and awarded by the Louisiana State Mineral Board shall be without warranty of any kind, either express, implied, or statutory, including, but not limited to, the implied warranties of merchantability and fitness for a particular purpose. Should the mineral lease awarded by the Louisiana State Mineral Board be subsequently modified, cancelled or abrogated due to the existence of conflicting leases, operating agreements, private claims or other future obligations or conditions which may affect all or any portion of the leased Tract, it shall not relieve the Lessee of the obligation to pay any bonus due thereon to the Louisiana State Mineral Board, nor shall the Louisiana State Mineral Board be obligated to refund any consideration paid by the Lessor prior to such modification, cancellation, or abrogation, including, but not limited to, bonuses, rentals and royalties.

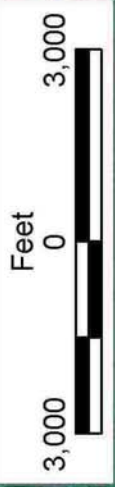
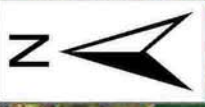
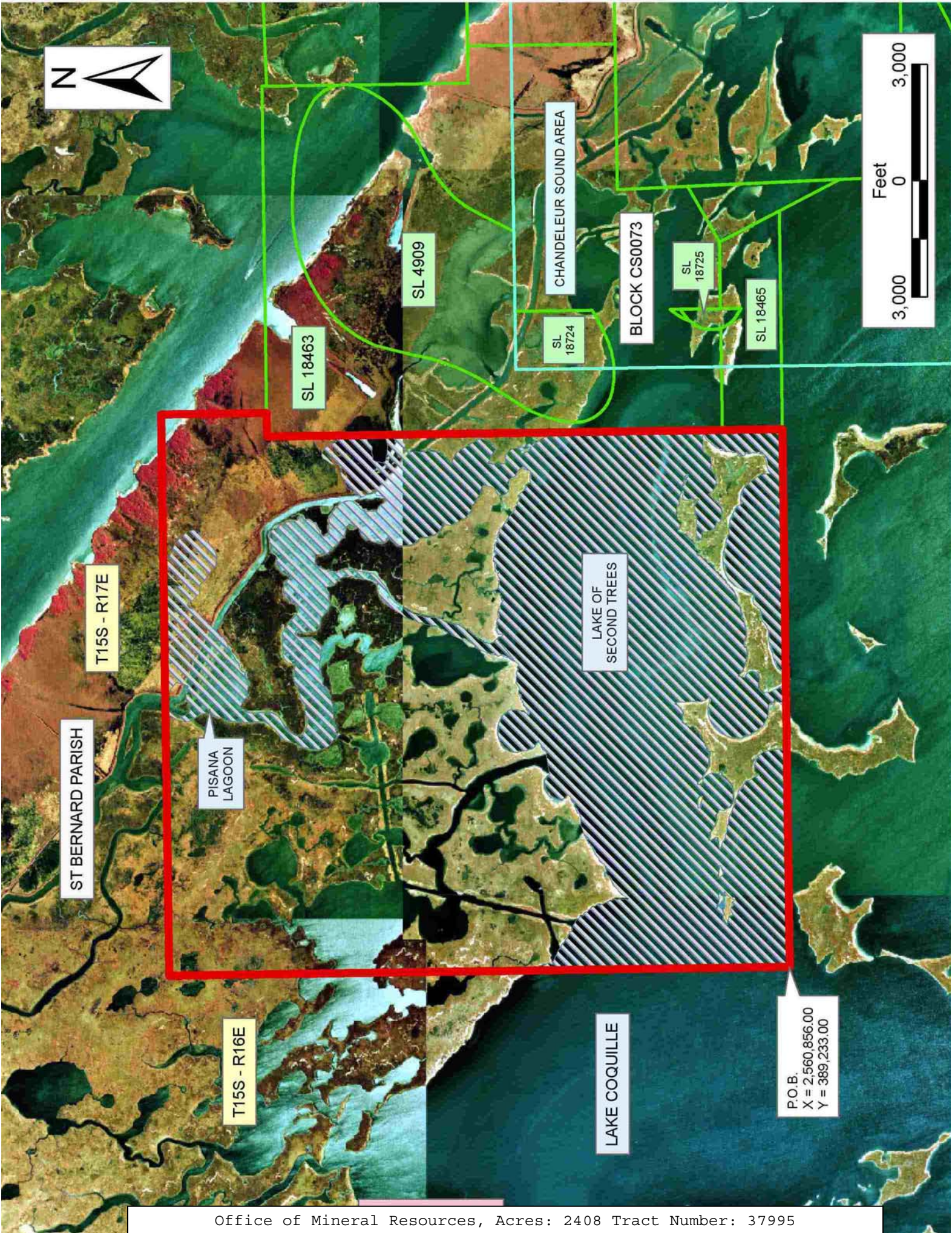
NOTE: The State of Louisiana does hereby reserve, and this lease shall be subject to, the imprescriptible right of surface use in the nature of a servitude in favor of the Department of Natural Resources, including its Offices and Commissions, for the sole purpose of implementing, constructing, servicing and maintaining approved coastal zone management and/or restoration projects. Utilization of any and all rights derived under this lease by the mineral lessee, its agents, successors or assigns, shall not interfere with nor hinder the reasonable surface use by the

Department of Natural Resources, its Offices or Commissions, as herein above reserved.

NOTE: The Department of Wildlife and Fisheries has designated certain areas in the coastal waters of the State of Louisiana as Oyster Seed Bed Areas. The exact location of those Seed Bed Areas must be obtained from the Department of Wildlife and Fisheries and any work done under a mineral lease from the State of Louisiana may necessarily be conducted in conformity with the rules and regulations promulgated by the said Department of Wildlife and Fisheries for Oyster Seed Bed Areas.

Applicant: KARE-SUE ENERGY, INC.

Bidder	Cash Payment	Price/Acre	Rental	Oil	Gas	Other



ST BERNARD PARISH

T15S - R17E

PISANA LAGOON

T15S - R16E

LAKE COQUILLE

LAKE OF SECOND TREES

CHANDELEUR SOUND AREA

BLOCK CS0073

SL 18463

SL 4909

SL 18724

SL 18725

SL 18465

P.O.B.
X = 2,560,856.00
Y = 389,233.00

TRACT 37996 - Cameron Parish, Louisiana

All of the lands now or formerly constituting the beds and bottoms of all water bodies of every nature and description the title of which vests in the State of Louisiana, together with all islands arising therein and other lands formed by accretion or by reliction, where allowed by law, excepting tax adjudicated lands, and not presently under mineral lease on December 14, 2005, situated in Cameron Parish, Louisiana, and more particularly described as follows: Beginning at a point having Coordinates of X = 1,500,966.67 and Y = 418,085.52; thence South 88 degrees 33 minutes 57 seconds East 13,389.89 feet to a point having Coordinates of X = 1,514,352.37 and Y = 417,750.38; thence South 01 degrees 26 minutes 53 seconds West 10,548.65 feet to a point having Coordinates of X = 1,514,085.80 and Y = 407,205.10; thence South 01 degrees 07 minutes 00 seconds West 2,645.72 feet to a point having Coordinates of X = 1,514,034.24 and Y = 404,559.89; thence North 88 degrees 33 minutes 42 seconds West 5,364.34 feet to a point having Coordinates of X = 1,508,671.60 and Y = 404,694.53; thence North 88 degrees 35 minutes 16 seconds West 5,348.62 feet to a point having Coordinates of X = 1,503,324.60 and Y = 404,826.36; thence North 88 degrees 35 minutes 14 seconds West 2,674.15 feet to a point having Coordinates of X = 1,500,651.26 and Y = 404,892.30; thence North 01 degrees 22 minutes 35 seconds East 2,641.22 feet to a point having Coordinates of X = 1,500,714.70 and Y = 407,532.75; thence North 01 degrees 22 minutes 04 seconds East 10,555.78 feet to the point of beginning, containing approximately **941 acres**, all as more particularly outlined on a plat on file in the Office of Mineral Resources, Department of Natural Resources. All bearings, distances and coordinates are based on Louisiana Coordinate System of 1927, (North or South Zone), where applicable.

NOTE: The above description of the Tract nominated for lease has been provided and corrected, where required, exclusively by the nomination party. Any mineral lease selected from this Tract and awarded by the Louisiana State Mineral Board shall be without warranty of any kind, either express, implied, or statutory, including, but not limited to, the implied warranties of merchantability and fitness for a particular purpose. Should the mineral lease awarded by the Louisiana State Mineral Board be subsequently modified, cancelled or abrogated due to the existence of conflicting leases, operating agreements, private claims or other future obligations or conditions which may affect all or any portion of the leased Tract, it shall not relieve the Lessee of the obligation to pay any bonus due thereon to the Louisiana State Mineral Board, nor shall the Louisiana State Mineral Board be obligated to refund any consideration paid by the Lessor prior to such modification, cancellation, or abrogation, including, but not limited to, bonuses, rentals and royalties.

NOTE: The State of Louisiana does hereby reserve, and this lease shall be subject to, the imprescriptible right of surface use in the nature of a servitude in favor of the Department of Natural Resources, including its Offices and Commissions, for the sole purpose of implementing,

constructing, servicing and maintaining approved coastal zone management and/or restoration projects. Utilization of any and all rights derived under this lease by the mineral lessee, its agents, successors or assigns, shall not interfere with nor hinder the reasonable surface use by the Department of Natural Resources, its Offices or Commissions, as herein above reserved.

Applicant: KEN SAVAGE & ASSOCIATES, INC.

Bidder	Cash Payment	Price/Acre	Rental	Oil	Gas	Other



LITTLE
PECAN
BAYOU

CAMERON PARISH



UPPER
MUD
LAKE

P.O.B.
X=1,500,966.67
Y=418,085.52

T14S - R5W

T15S - R5W

TRACT 37997 - Portion of Blocks 47, and 72, Chandeleur Sound Area, St. Bernard Parish, Louisiana

All of the lands now or formerly constituting the beds and bottoms of all water bodies of every nature and description the title of which vests in the State of Louisiana, together with all islands arising therein and other lands formed by accretion or by reliction, where allowed by law, excepting tax adjudicated lands, and not presently under mineral lease on December 14, 2005, situated in St. Bernard Parish, Louisiana, and more particularly described as follows: Beginning at a point located within Block 47, Chandeleur Sound Area, said point being the Northwest corner of State Lease No. 4039, as amended, having Coordinates of X = 2,598,475.00 and Y = 402,000.00; thence along the boundary of said State Lease No. 4039 the following courses: South 5,920.00 feet and East 2,088.00 feet to a point on the line common to said Block 47 and Block 72, having Coordinates of X = 2,600,563.00 and Y = 396,080.00; thence South 162.49 feet to a point on the boundary of State Lease No. 16158, as amended, having Coordinates of X = 2,600,563.00 and Y = 395,917.51; thence along the boundary of said State Lease No. 15168 the following courses: Northwesterly on an arc having a radius of 39,526.22 feet and a chord bearing of North 88 degrees 10 minutes 47 seconds West 197.78 feet, Southwesterly on an arc having a radius of 2,054.50 feet and a chord bearing of South 83 degrees 17 minutes 30 seconds West 704.29 feet, Southwesterly on an arc having a radius of 1,308.22 feet and a chord bearing of South 55 degrees 20 minutes 45 seconds West 914.40 feet, Southwesterly on an arc having a radius of 895.64 feet and a chord bearing of South 03 degrees 53 minutes 35 seconds West 901.13 feet, Southeasterly on an arc having a radius of 1,993.54 feet and a chord bearing of South 33 degrees 03 minutes 19 seconds East 774.50 feet, and Southeasterly on an arc having a radius of 23,516.29 feet and a chord bearing of South 45 degrees 59 minutes 15 seconds East 849.97 feet to a point having Coordinates of X = 2,599,886.23 and Y = 393,182.81; thence South 71 degrees 35 minutes 41 seconds West 3,628.06 feet to a point having Coordinates of X = 2,596,443.76 and Y = 392,037.30; thence South 89 degrees 21 minutes 00 seconds West 5,051.09 feet to a point having Coordinates of X = 2,591,393.00 and Y = 391,980.00; thence North 02 degrees 35 minutes 58 seconds West 381.89 feet to the Southeast corner of State Lease No. 18510 having Coordinates of X = 2,591,375.68 and Y = 392,361.50; thence North 1,038.50 feet on the East line of said State Lease No. 18510 to its Northeast corner and the Southeast corner of State Lease No. 18073 having Coordinates of X = 2,591,375.68 and Y = 393,400.00; thence North 02 degrees 02 minutes 40 seconds West 3,832.89 feet on the East line of said State Lease No. 18073 to its Northeast corner and the Southeast corner of State Lease No. 18464 having Coordinates of X = 2,591,238.95 and Y = 397,230.45; thence North 07 degrees 12 minutes 06 seconds East on the East line of said State Lease No. 18464 to its Northeast corner and the Southwest corner of State Lease No. 18500 having Coordinates of X = 2,591,100.01 and Y = 398,330.00; thence along the boundary of said State Lease No. 18500 the following courses: East 2,999.99 feet and North 1,455.00 feet to its Northeast corner and a point

on the South line of State Lease No. 18186 having Coordinates of X = 2,594,100.00 and Y = 399,785.00; thence along the boundary of said State Lease No. 18186 the following courses: East 777.51 feet and North 2,215.00 feet to a point having Coordinates of X = 2,594,877.51 and Y = 402,000.00; thence East 3,597.49 feet to the point of beginning, containing approximately **1,325 acres**, all as more particularly outlined on a plat on file in the Office of Mineral Resources, Department of Natural Resources. All bearings, distances and coordinates are based on Louisiana Coordinate System of 1927, (North or South Zone), where applicable.

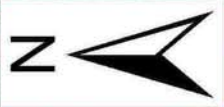
NOTE: The above description of the Tract nominated for lease has been provided and corrected, where required, exclusively by the nomination party. Any mineral lease selected from this Tract and awarded by the Louisiana State Mineral Board shall be without warranty of any kind, either express, implied, or statutory, including, but not limited to, the implied warranties of merchantability and fitness for a particular purpose. Should the mineral lease awarded by the Louisiana State Mineral Board be subsequently modified, cancelled or abrogated due to the existence of conflicting leases, operating agreements, private claims or other future obligations or conditions which may affect all or any portion of the leased Tract, it shall not relieve the Lessee of the obligation to pay any bonus due thereon to the Louisiana State Mineral Board, nor shall the Louisiana State Mineral Board be obligated to refund any consideration paid by the Lessor prior to such modification, cancellation, or abrogation, including, but not limited to, bonuses, rentals and royalties.

NOTE: The State of Louisiana does hereby reserve, and this lease shall be subject to, the imprescriptible right of surface use in the nature of a servitude in favor of the Department of Natural Resources, including its Offices and Commissions, for the sole purpose of implementing, constructing, servicing and maintaining approved coastal zone management and/or restoration projects. Utilization of any and all rights derived under this lease by the mineral lessee, its agents, successors or assigns, shall not interfere with nor hinder the reasonable surface use by the Department of Natural Resources, its Offices or Commissions, as herein above reserved.

NOTE: The Department of Wildlife and Fisheries has designated certain areas in the coastal waters of the State of Louisiana as Oyster Seed Bed Areas. The exact location of those Seed Bed Areas must be obtained from the Department of Wildlife and Fisheries and any work done under a mineral lease from the State of Louisiana may necessarily be conducted in conformity with the rules and regulations promulgated by the said Department of Wildlife and Fisheries for Oyster Seed Bed Areas.

Applicant: KARE-SUE ENERGY, INC.

Bidder	Cash Payment	Price/Acre	Rental	Oil	Gas	Other



P.O.B.
X = 2,598,475.00
Y = 402,000.00

ST BERNARD PARISH

T15S - R17E

BLOCK CS0047

T15S - R18E

SL 4039

SL 16158

CHANDELEUR SOUND AREA

BLOCK CS0072

SL 15485

SL 18186

SL 18500

SL 18185

SL 18464

SL 18073

BLOCK CS0073

SL 18510