

TRACT 37978 - Cameron Parish, Louisiana

All of the lands now or formerly constituting the beds and bottoms of all water bodies of every nature and description the title of which vests in the State of Louisiana, together with all islands arising therein and other lands formed by accretion or by reliction, where allowed by law, excepting tax adjudicated lands, and not presently under mineral lease on December 14, 2005, situated in Cameron Parish, Louisiana, and more particularly described as follows: Beginning at a point having Coordinates of X = 1,547,057.26 and Y = 492,050.00; thence East 13,992.26 feet to a point having Coordinates of X = 1,561,049.52 and Y = 492,050.00; thence South 11,222.13 feet to point having Coordinates of X = 1,561,049.52 and Y = 480,827.87; thence West 18,000.00 feet to the Southeast corner of State Lease No. 18645 having Coordinates of X = 1,543,049.52 and Y = 480,827.87; thence North 4,030.40 feet along the East boundary of said State Lease No. 18645 its Northeast corner also being a point on the South boundary of State Lease No. 18646 having Coordinates of X = 1,543,049.52 and Y = 484,858.27; thence East 4,007.74 feet along the South boundary of said State Lease No. 18646 to its Southeast corner having Coordinates of X = 1,547,057.26 and Y = 484,858.27,; thence North 3,068.50 feet along the East boundary of said State Lease No. 18646 to its Northeast corner having Coordinates of X = 1,547,057.26 and Y = 487,926.77; thence North 4,123.23 feet to the point of beginning, **LESS AND EXCEPT** all those portions of State Lease No. 17314, as amended, that may lie within the above described tract, containing approximately **270 acres**, all as more particularly outlined on a plat on file in the Office of Mineral Resources, Department of Natural Resources. All bearings, distances and coordinates are based on Louisiana Coordinate System of 1927, (North or South Zone), where applicable.

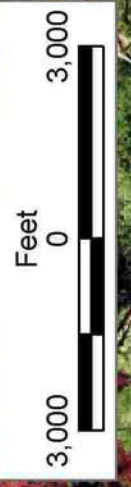
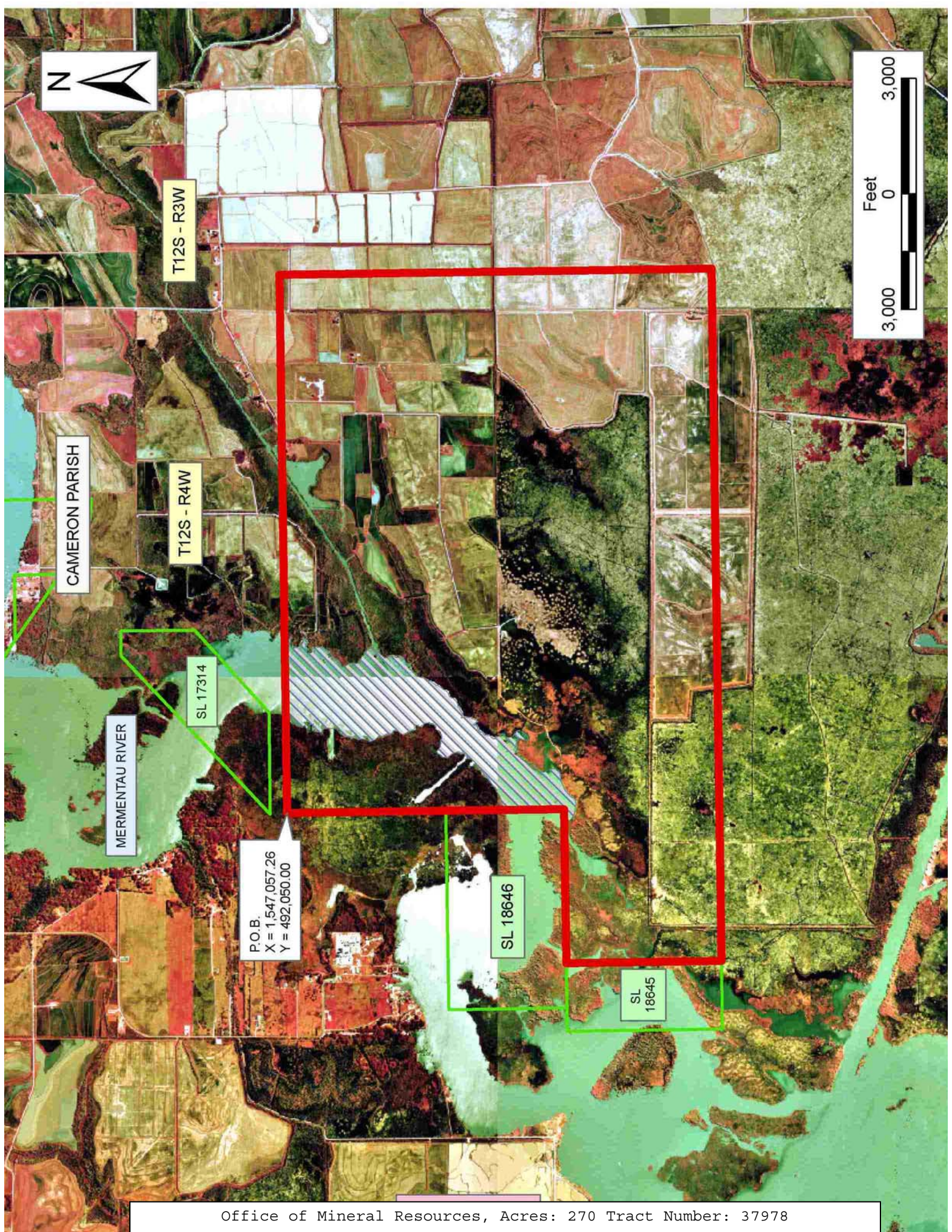
NOTE: The above description of the Tract nominated for lease has been provided and corrected, where required, exclusively by the nomination party. Any mineral lease selected from this Tract and awarded by the Louisiana State Mineral Board shall be without warranty of any kind, either express, implied, or statutory, including, but not limited to, the implied warranties of merchantability and fitness for a particular purpose. Should the mineral lease awarded by the Louisiana State Mineral Board be subsequently modified, cancelled or abrogated due to the existence of conflicting leases, operating agreements, private claims or other future obligations or conditions which may affect all or any portion of the leased Tract, it shall not relieve the Lessee of the obligation to pay any bonus due thereon to the Louisiana State Mineral Board, nor shall the Louisiana State Mineral Board be obligated to refund any consideration paid by the Lessor prior to such modification, cancellation, or abrogation, including, but not limited to, bonuses, rentals and royalties.

NOTE: The State of Louisiana does hereby reserve, and this lease shall be subject to, the imprescriptible right of surface use in the nature of a servitude in favor of the Department of Natural Resources, including its Offices and Commissions, for the sole purpose of implementing,

constructing, servicing and maintaining approved coastal zone management and/or restoration projects. Utilization of any and all rights derived under this lease by the mineral lessee, its agents, successors or assigns, shall not interfere with nor hinder the reasonable surface use by the Department of Natural Resources, its Offices or Commissions, as herein above reserved.

Applicant: LEE SONNIER III

Bidder	Cash Payment	Price/Acre	Rental	Oil	Gas	Other



T12S - R3W

CAMERON PARISH

T12S - R4W

MERMENTAU RIVER

SL 17314

P.O.B.
X = 1,547,057.26
Y = 492,050.00

SL 18646

SL 18645

TRACT 37979 - Cameron Parish, Louisiana

All of the lands now or formerly constituting the beds and bottoms of all water bodies of every nature and description the title of which vests in the State of Louisiana, together with all islands arising therein and other lands formed by accretion or by reliction, where allowed by law, excepting tax adjudicated lands, and not presently under mineral lease on December 14, 2005, situated in Cameron Parish, Louisiana, and more particularly described as follows: Beginning at a point having Coordinates of X = 1,530,893.75 and Y = 487,926.77; thence East 10,993.38 feet to the Northwest corner of State Lease No. 18646 having Coordinates of X = 1,541,887.13 and Y = 487,926.77; thence South 3,068.50 feet along the West boundary of said State Lease No. 18646 to its Southwest corner also being a point on the North boundary of State Lease 18645 having Coordinates of X = 1,541,887.13 and Y = 484,858.27; thence West 600.94 feet along the North boundary of said State Lease No. 18645 to its Northwest corner having Coordinates of X = 1,541,286.19 and Y = 484,858.27; thence South 4,030.40 feet along the West boundary of said State Lease No. 18645 to its Southwest corner having Coordinates of X = 1,541,286.19 and Y = 480,827.87; thence East 1,763.33 feet along the South boundary of said State Lease No. 18645 to its Southeast corner having Coordinates of X = 1,543,049.52 and Y = 480,827.87; thence South 9,336.49 feet a point having Coordinates of X = 1,543,049.52 and Y = 471,491.38; thence West 12,155.77 feet a point having Coordinates of X = 1,530,893.75 and Y = 471,491.38; thence North 16,435.39 feet to the point of beginning, containing approximately **2,120.94 acres**, all as more particularly outlined on a plat on file in the Office of Mineral Resources, Department of Natural Resources. All bearings, distances and coordinates are based on Louisiana Coordinate System of 1927, (North or South Zone), where applicable.

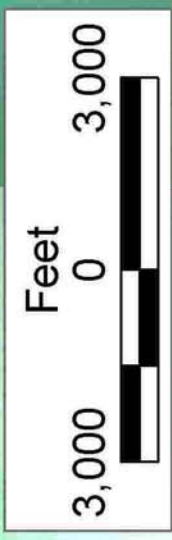
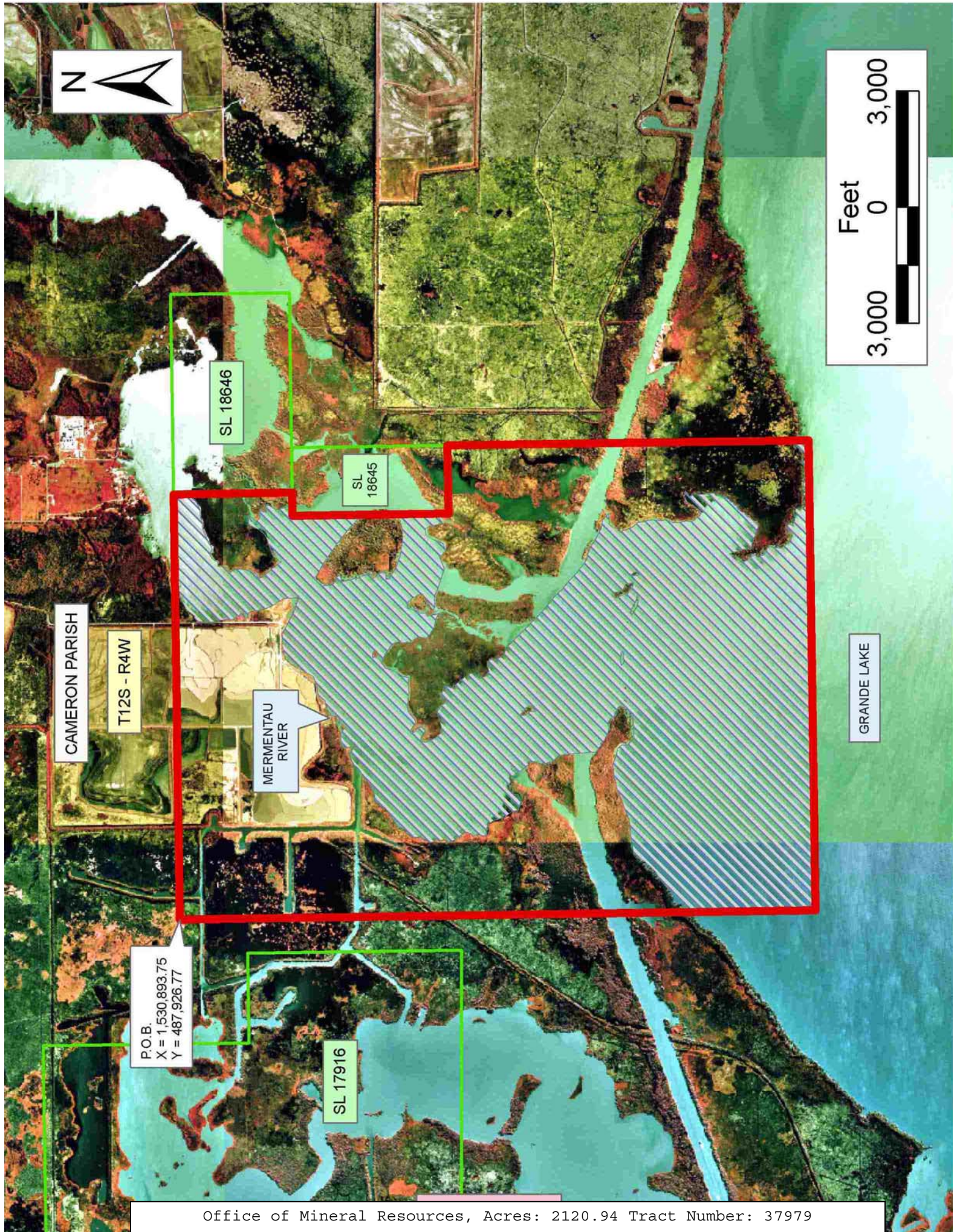
NOTE: The above description of the Tract nominated for lease has been provided and corrected, where required, exclusively by the nomination party. Any mineral lease selected from this Tract and awarded by the Louisiana State Mineral Board shall be without warranty of any kind, either express, implied, or statutory, including, but not limited to, the implied warranties of merchantability and fitness for a particular purpose. Should the mineral lease awarded by the Louisiana State Mineral Board be subsequently modified, cancelled or abrogated due to the existence of conflicting leases, operating agreements, private claims or other future obligations or conditions which may affect all or any portion of the leased Tract, it shall not relieve the Lessee of the obligation to pay any bonus due thereon to the Louisiana State Mineral Board, nor shall the Louisiana State Mineral Board be obligated to refund any consideration paid by the Lessor prior to such modification, cancellation, or abrogation, including, but not limited to, bonuses, rentals and royalties.

NOTE: The State of Louisiana does hereby reserve, and this lease shall be subject to, the imprescriptible right of surface use in the nature of a servitude in favor of the Department of Natural Resources, including its Offices and Commissions, for the sole purpose of implementing,

constructing, servicing and maintaining approved coastal zone management and/or restoration projects. Utilization of any and all rights derived under this lease by the mineral lessee, its agents, successors or assigns, shall not interfere with nor hinder the reasonable surface use by the Department of Natural Resources, its Offices or Commissions, as herein above reserved.

Applicant: LEE SONNIER III

Bidder	Cash Payment	Price/Acre	Rental	Oil	Gas	Other



CAMERON PARISH

T12S - R4W

MERMENTAU RIVER

GRANDE LAKE

P.O.B.
X = 1,530,893.75
Y = 487,926.77

SL 18646

SL 18645

SL 17916

TRACT 37980 - St. Bernard Parish, Louisiana

All of the lands now or formerly constituting the beds and bottoms of all water bodies of every nature and description the title of which vests in the State of Louisiana, together with all islands arising therein and other lands formed by accretion or by reliction, where allowed by law, excepting tax adjudicated lands, and not presently under mineral lease on December 14, 2005, situated in St. Bernard Parish, Louisiana, and more particularly described as follows: Beginning at a point having Coordinates of X = 2,593,810.00 and Y = 426,707.00; thence West 14,474.00 feet to a point having Coordinates of X = 2,579,336.00 and Y = 426,707.00; thence North 8,450.00 feet to a point on the South line of State Lease No. 17958 having Coordinates of X = 2,579,336.00 and Y = 435,157.00; thence along the boundary of said State Lease No. 17958 the following courses: East 3,664.00 feet and North 10,904.73 feet to its Northeast corner and a point on the boundary of the Biloxi Wildlife Management Area having Coordinates of X = 2,583,000.00 and Y = 446,061.73; thence Southeasterly on the boundary of said Biloxi Wildlife Management Area to the Southwest corner of State Lease No. 17980 having a Coordinate of X = 2,583,899.77; thence along the boundary of said Biloxi Wildlife Management Area and said State Lease No. 17980 the following courses: Southeasterly, North 88 degrees 23 minutes 16 seconds East 4,798.83 feet, and North 88 degrees 34 minutes 24 seconds East 4,057.11 feet to a point having Coordinates of X = 2,593,810.00 and Y = 443,999.69; thence South 17,292.69 feet to the point of beginning, **LESS AND EXCEPT** any portion of the Biloxi Wildlife Management Area that may lie within the above described tract, containing approximately **652 acres**, all as more particularly outlined on a plat on file in the Office of Mineral Resources, Department of Natural Resources. All bearings, distances and coordinates are based on Louisiana Coordinate System of 1927, (North or South Zone), where applicable.

NOTE: The above description of the Tract nominated for lease has been provided and corrected, where required, exclusively by the nomination party. Any mineral lease selected from this Tract and awarded by the Louisiana State Mineral Board shall be without warranty of any kind, either express, implied, or statutory, including, but not limited to, the implied warranties of merchantability and fitness for a particular purpose. Should the mineral lease awarded by the Louisiana State Mineral Board be subsequently modified, cancelled or abrogated due to the existence of conflicting leases, operating agreements, private claims or other future obligations or conditions which may affect all or any portion of the leased Tract, it shall not relieve the Lessee of the obligation to pay any bonus due thereon to the Louisiana State Mineral Board, nor shall the Louisiana State Mineral Board be obligated to refund any consideration paid by the Lessor prior to such modification, cancellation, or abrogation, including, but not limited to, bonuses, rentals and royalties.

NOTE: The Office of Mineral Resources will require a minimum bonus of \$230 per acre and a minimum royalty of 23%.

NOTE: The State of Louisiana does hereby reserve, and this lease shall be subject to, the imprescriptible right of surface use in the nature of a servitude in favor of the Department of Natural Resources, including its Offices and Commissions, for the sole purpose of implementing, constructing, servicing and maintaining approved coastal zone management and/or restoration projects. Utilization of any and all rights derived under this lease by the mineral lessee, its agents, successors or assigns, shall not interfere with nor hinder the reasonable surface use by the Department of Natural Resources, its Offices or Commissions, as herein above reserved.

NOTE: The Department of Wildlife and Fisheries has designated certain areas in the coastal waters of the State of Louisiana as Oyster Seed Bed Areas. The exact location of those Seed Bed Areas must be obtained from the Department of Wildlife and Fisheries and any work done under a mineral lease from the State of Louisiana may necessarily be conducted in conformity with the rules and regulations promulgated by the said Department of Wildlife and Fisheries for Oyster Seed Bed Areas.

Applicant: KARE-SUE ENERGY, INC.

Bidder	Cash Payment	Price/Acre	Rental	Oil	Gas	Other



T13S - R17E

T14S - R17E

DRUM LAKE

P.O.B.
X = 2,593,810.00
Y = 426,707.00

BLOCK CS0046

CHANDELEUR SOUND AREA



ST BERNARD PARISH

SL 17980

BILOXI WMA

DRUM HOLE

LONG LAGOON

BAYOU LA LOUTRE

SL 17958

TRACT 37981 - St. Bernard Parish, Louisiana

All of the lands now or formerly constituting the beds and bottoms of all water bodies of every nature and description the title of which vests in the State of Louisiana, together with all islands arising therein and other lands formed by accretion or by reliction, where allowed by law, excepting tax adjudicated lands, and not presently under mineral lease on December 14, 2005, situated in St. Bernard Parish, Louisiana, and more particularly described as follows: Beginning at a point having Coordinates of X = 2,593,810.00 and Y = 426,707.00; thence North 17,292.69 feet to a point on the South line of State Lease No. 17980 having Coordinates of X = 2,593,810.00 and Y = 443,999.69; thence along the boundary of said State Lease No. 17980 the following courses: North 88 degrees 34 minutes 24 seconds East 1,445.34 feet, North 88 degrees 01 minute 42 seconds East 5,265.38 feet, and North 01 degrees 52 minutes 09 seconds West 970.69 feet to a point having Coordinates of X = 2,600,485.49 and Y = 445,187.00; thence East 2005.51 feet to a point having Coordinates of X = 2,602,491.00 and Y = 445,187.00; thence South 77 degrees 37 minutes 09 seconds East 10,032.31 feet to a point having Coordinates of X = 2,612,290.00 and Y = 443,036.00; thence South 16,329.00 feet to a point having Coordinates of X = 2,612,290.00 and Y = 426,707.00; thence West 18,480.00 feet to the point of beginning, **LESS AND EXCEPT** any portion of the Biloxi Wildlife Management Area that may lie within the above described tract, containing approximately **2,414 acres**, all as more particularly outlined on a plat on file in the Office of Mineral Resources, Department of Natural Resources. All bearings, distances and coordinates are based on Louisiana Coordinate System of 1927, (North or South Zone), where applicable.

NOTE: The above description of the Tract nominated for lease has been provided and corrected, where required, exclusively by the nomination party. Any mineral lease selected from this Tract and awarded by the Louisiana State Mineral Board shall be without warranty of any kind, either express, implied, or statutory, including, but not limited to, the implied warranties of merchantability and fitness for a particular purpose. Should the mineral lease awarded by the Louisiana State Mineral Board be subsequently modified, cancelled or abrogated due to the existence of conflicting leases, operating agreements, private claims or other future obligations or conditions which may affect all or any portion of the leased Tract, it shall not relieve the Lessee of the obligation to pay any bonus due thereon to the Louisiana State Mineral Board, nor shall the Louisiana State Mineral Board be obligated to refund any consideration paid by the Lessor prior to such modification, cancellation, or abrogation, including, but not limited to, bonuses, rentals and royalties.

NOTE: The Office of Mineral Resources will require a minimum bonus of \$230 per acre and a minimum royalty of 23%.

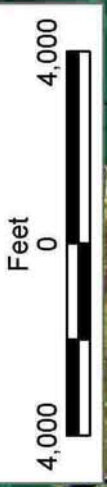
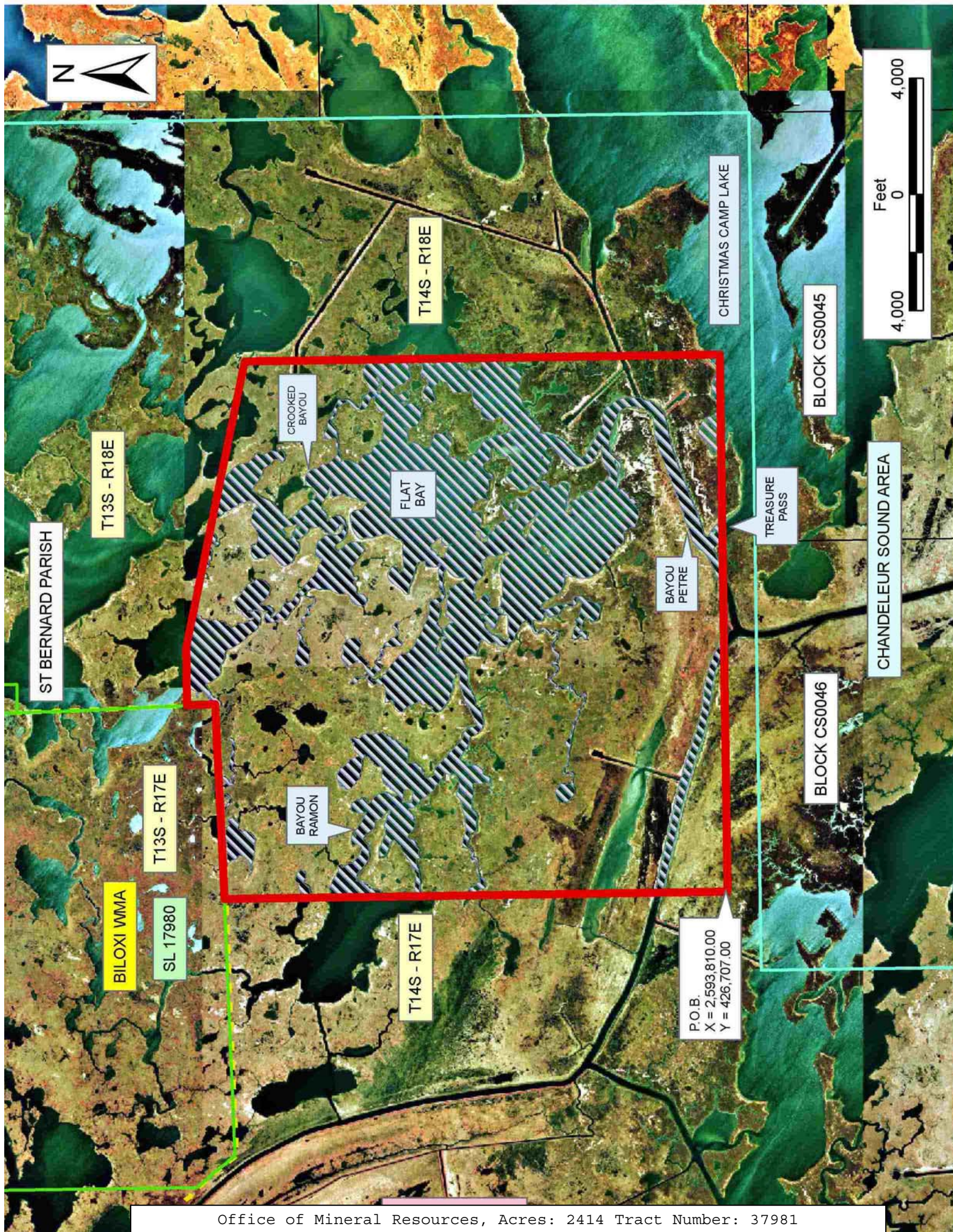
NOTE: The State of Louisiana does hereby reserve, and this lease shall be subject to, the imprescriptible right of surface use in the nature of a servitude in favor of the Department of Natural Resources, including its

Offices and Commissions, for the sole purpose of implementing, constructing, servicing and maintaining approved coastal zone management and/or restoration projects. Utilization of any and all rights derived under this lease by the mineral lessee, its agents, successors or assigns, shall not interfere with nor hinder the reasonable surface use by the Department of Natural Resources, its Offices or Commissions, as herein above reserved.

NOTE: The Department of Wildlife and Fisheries has designated certain areas in the coastal waters of the State of Louisiana as Oyster Seed Bed Areas. The exact location of those Seed Bed Areas must be obtained from the Department of Wildlife and Fisheries and any work done under a mineral lease from the State of Louisiana may necessarily be conducted in conformity with the rules and regulations promulgated by the said Department of Wildlife and Fisheries for Oyster Seed Bed Areas.

Applicant: KARE-SUE ENERGY, INC.

Bidder	Cash Payment	Price/Acre	Rental	Oil	Gas	Other



ST BERNARD PARISH

T13S - R18E

T14S - R18E

CROOKED BAYOU

FLAT BAY

BAYOU PETRE

BAYOU RAMON

T13S - R17E

T14S - R17E

BILLOXI WMA

SL 17980

P.O.B.
X = 2,593,810.00
Y = 426,707.00

CHRISTMAS CAMP LAKE

BLOCK CS0045

TREASURE PASS

CHANDELEUR SOUND AREA

BLOCK CS0046

TRACT 37982 - St. Bernard Parish, Louisiana

All of the lands now or formerly constituting the beds and bottoms of all water bodies of every nature and description the title of which vests in the State of Louisiana, together with all islands arising therein and other lands formed by accretion or by reliction, where allowed by law, excepting tax adjudicated lands, and not presently under mineral lease on December 14, 2005, situated in St. Bernard Parish, Louisiana, and more particularly described as follows: Beginning at the Southwest corner of State Lease No. 18437 having Coordinates of X = 2,563,085.42 and Y = 440,900.00; thence East 4,156.58 feet along the South line of said State Lease No. 18437 to its Southeast corner also being a point on the West line of State Lease No. 17958 having Coordinates of X = 2,567,242.00 and Y = 440,900.00; thence South 5,743.00 feet along the West line of said State Lease No. 17958 to its Southwest corner also being the Northeast corner of State Lease No. 18328 having Coordinates of X = 2,567,242.00 and Y = 435,157.00; thence West 10,620.50 feet on the North line of said State Lease No. 18328 to its Northwest corner having Coordinates of X = 2,556,621.50 and Y = 435,157.00; thence West 4,077.50 feet to a point having Coordinates of X = 2,552,544.00 and Y = 435,157.00; thence North 5,743.00 feet to a point on the South line of State Lease No. 18438 having Coordinates of X = 2,552,544.00 and Y = 440,900.00; thence East 627.20 feet on the South line of said State Lease No. 18438 to its most Southerly Southeast corner, and a point on the boundary of the Biloxi Wildlife Management Area having Coordinates of X = 2,553,171.20 and Y = 440,900.00; thence along the boundary of said Biloxi Wildlife Management Area the following courses: Southeasterly, North 87 degrees 56 minutes 26 seconds East 6,236.83 feet, and North 02 degrees 12 minutes 43 seconds West 3,043.75 feet to the point of beginning, **LESS AND EXCEPT** any portion of the Biloxi Wildlife Management Area that may lie within the above described tract, containing approximately **292 acres**, all as more particularly outlined on a plat on file in the Office of Mineral Resources, Department of Natural Resources. All bearings, distances and coordinates are based on Louisiana Coordinate System of 1927, (North or South Zone), where applicable.

NOTE: The above description of the Tract nominated for lease has been provided and corrected, where required, exclusively by the nomination party. Any mineral lease selected from this Tract and awarded by the Louisiana State Mineral Board shall be without warranty of any kind, either express, implied, or statutory, including, but not limited to, the implied warranties of merchantability and fitness for a particular purpose. Should the mineral lease awarded by the Louisiana State Mineral Board be subsequently modified, cancelled or abrogated due to the existence of conflicting leases, operating agreements, private claims or other future obligations or conditions which may affect all or any portion of the leased Tract, it shall not relieve the Lessee of the obligation to pay any bonus due thereon to the Louisiana State Mineral Board, nor shall the Louisiana State Mineral Board be obligated to refund any consideration

paid by the Lessor prior to such modification, cancellation, or abrogation, including, but not limited to, bonuses, rentals and royalties.

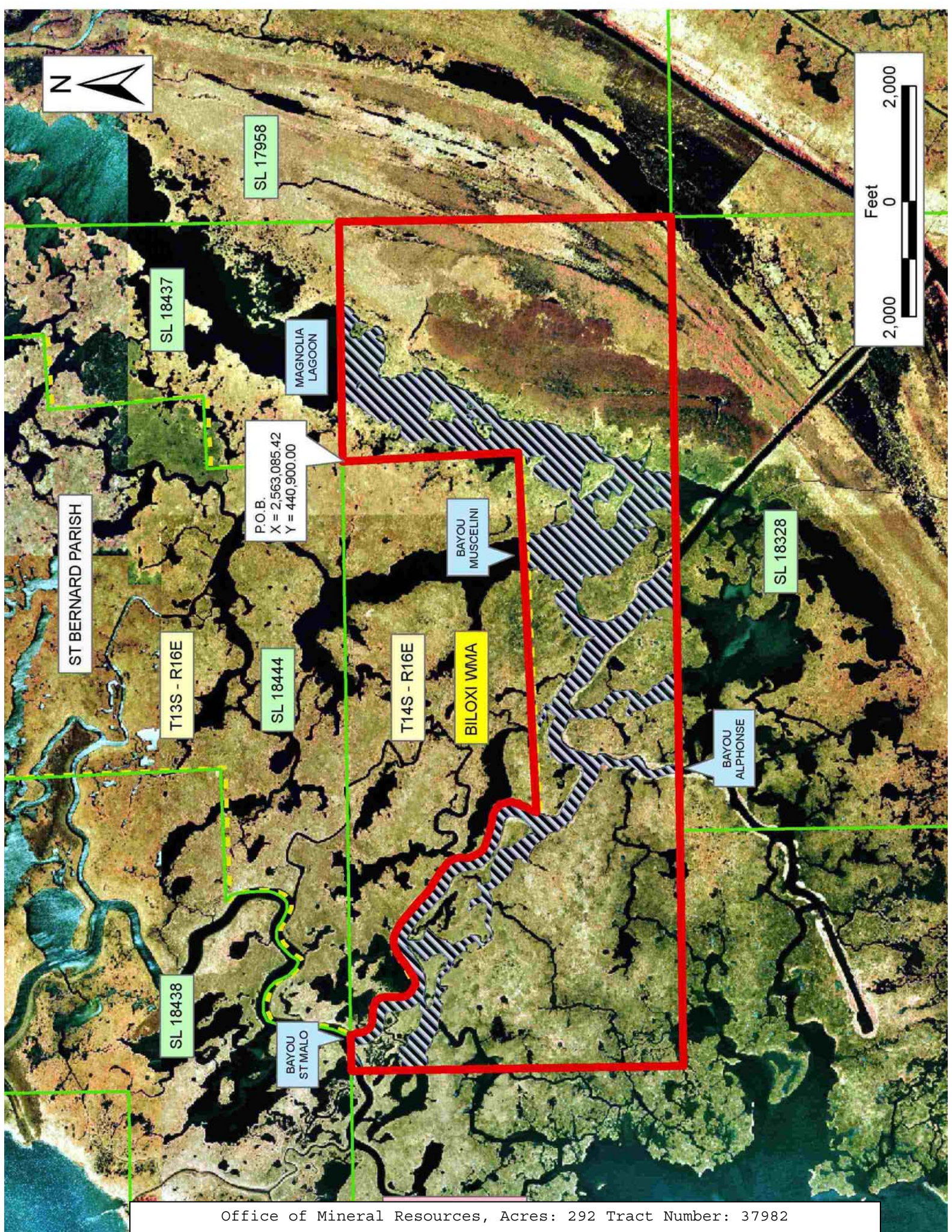
NOTE: The Office of Mineral Resources will require a minimum bonus of \$230 per acre and a minimum royalty of 23%.

NOTE: The State of Louisiana does hereby reserve, and this lease shall be subject to, the imprescriptible right of surface use in the nature of a servitude in favor of the Department of Natural Resources, including its Offices and Commissions, for the sole purpose of implementing, constructing, servicing and maintaining approved coastal zone management and/or restoration projects. Utilization of any and all rights derived under this lease by the mineral lessee, its agents, successors or assigns, shall not interfere with nor hinder the reasonable surface use by the Department of Natural Resources, its Offices or Commissions, as herein above reserved.

NOTE: The Department of Wildlife and Fisheries has designated certain areas in the coastal waters of the State of Louisiana as Oyster Seed Bed Areas. The exact location of those Seed Bed Areas must be obtained from the Department of Wildlife and Fisheries and any work done under a mineral lease from the State of Louisiana may necessarily be conducted in conformity with the rules and regulations promulgated by the said Department of Wildlife and Fisheries for Oyster Seed Bed Areas.

Applicant: KARE-SUE ENERGY, INC.

Bidder	Cash Payment	Price/Acre	Rental	Oil	Gas	Other



TRACT 37983 - St. Bernard Parish, Louisiana

All of the lands now or formerly constituting the beds and bottoms of all water bodies of every nature and description the title of which vests in the State of Louisiana, together with all islands arising therein and other lands formed by accretion or by reliction, where allowed by law, excepting tax adjudicated lands, and not presently under mineral lease on December 14, 2005, situated in St. Bernard Parish, Louisiana, and more particularly described as follows: Beginning at a point having Coordinates of X = 2,579,336.00 and Y = 423,713.00; thence West 15,386.50 feet to a point on the East line of State Lease No. 18745 having Coordinates of X = 2,563,949.50 and Y = 423,713.00; thence along the boundary of said State Lease No. 18745 the following courses: North 3,468.50 feet and West 3,093.50 feet to a point having Coordinates of X = 2,560,856.00 and Y = 427,181.50; thence North 873.00 feet to a point on the South line of State Lease No. 18328 having Coordinates of X = 2,560,856.00 and Y = 428,054.50; thence along the boundary of said State Lease No. 18328 the following courses: East 6,386.00 feet and North 7,102.50 feet to its Northeast corner also being the Southwest corner of State Lease No. 17958 having Coordinates of X = 2,567,242.00 and Y = 435,157.00; thence East 12,094.00 feet along the South line of said State Lease No. 17958 to a point having Coordinates of X = 2,579,336.00 and Y = 435,157.00; thence South 11,444.00 feet to the point of beginning, containing approximately **717 acres**, all as more particularly outlined on a plat on file in the Office of Mineral Resources, Department of Natural Resources. All bearings, distances and coordinates are based on Louisiana Coordinate System of 1927, (North or South Zone), where applicable.

NOTE: The above description of the Tract nominated for lease has been provided and corrected, where required, exclusively by the nomination party. Any mineral lease selected from this Tract and awarded by the Louisiana State Mineral Board shall be without warranty of any kind, either express, implied, or statutory, including, but not limited to, the implied warranties of merchantability and fitness for a particular purpose. Should the mineral lease awarded by the Louisiana State Mineral Board be subsequently modified, cancelled or abrogated due to the existence of conflicting leases, operating agreements, private claims or other future obligations or conditions which may affect all or any portion of the leased Tract, it shall not relieve the Lessee of the obligation to pay any bonus due thereon to the Louisiana State Mineral Board, nor shall the Louisiana State Mineral Board be obligated to refund any consideration paid by the Lessor prior to such modification, cancellation, or abrogation, including, but not limited to, bonuses, rentals and royalties.

NOTE: The Office of Mineral Resources will require a minimum bonus of \$230 per acre and a minimum royalty of 23%.

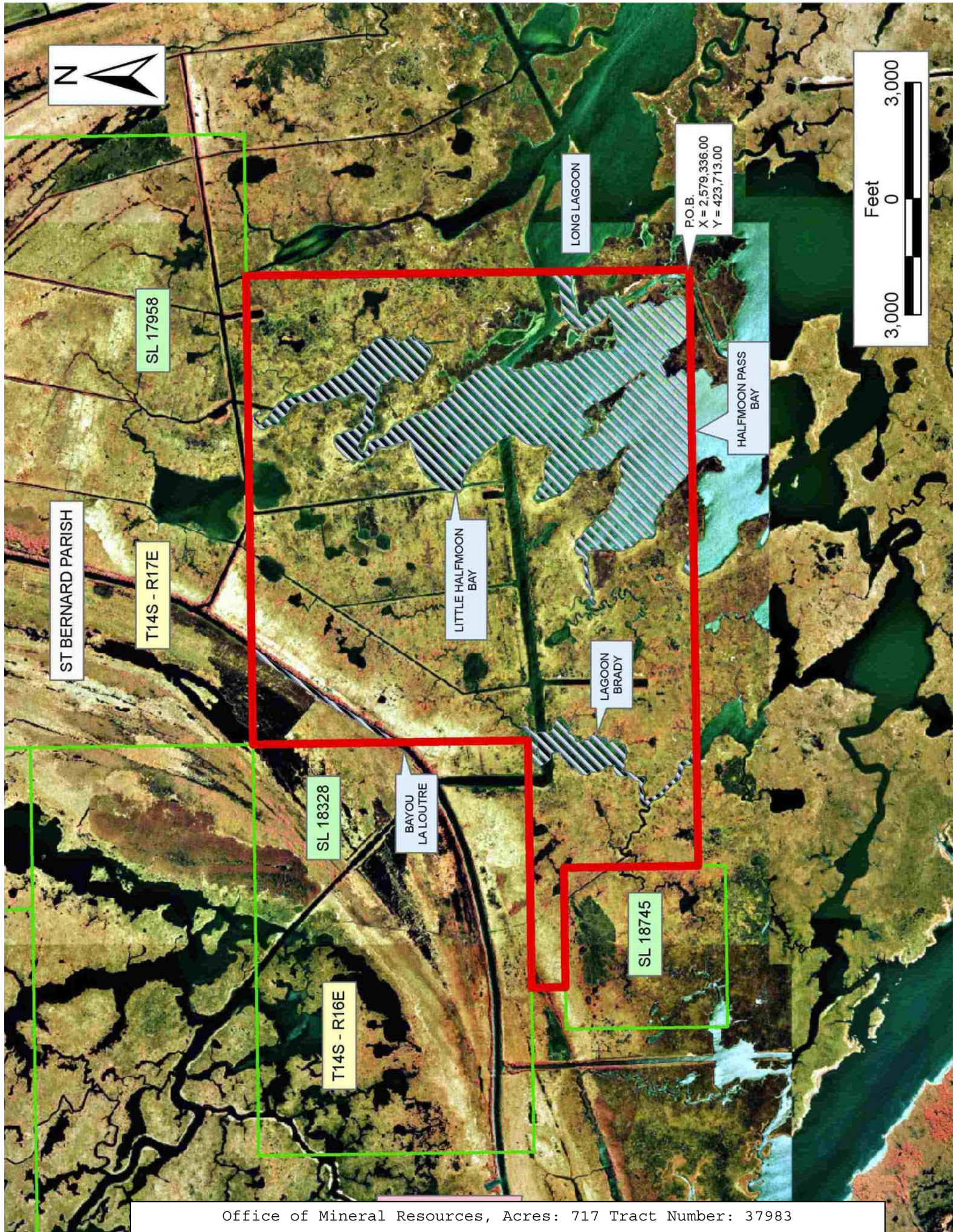
NOTE: The State of Louisiana does hereby reserve, and this lease shall be subject to, the imprescriptible right of surface use in the nature of a servitude in favor of the Department of Natural Resources, including its

Offices and Commissions, for the sole purpose of implementing, constructing, servicing and maintaining approved coastal zone management and/or restoration projects. Utilization of any and all rights derived under this lease by the mineral lessee, its agents, successors or assigns, shall not interfere with nor hinder the reasonable surface use by the Department of Natural Resources, its Offices or Commissions, as herein above reserved.

NOTE: The Department of Wildlife and Fisheries has designated certain areas in the coastal waters of the State of Louisiana as Oyster Seed Bed Areas. The exact location of those Seed Bed Areas must be obtained from the Department of Wildlife and Fisheries and any work done under a mineral lease from the State of Louisiana may necessarily be conducted in conformity with the rules and regulations promulgated by the said Department of Wildlife and Fisheries for Oyster Seed Bed Areas.

Applicant: KARE-SUE ENERGY, INC.

Bidder	Cash Payment	Price/Acre	Rental	Oil	Gas	Other



ST BERNARD PARISH

SL 17958

T14S - R17E

LONG LAGOON

POB
X = 2,579,336.00
Y = 423,713.00

HALFMOON PASS BAY

LITTLE HALFMOON BAY

LAGOON BRADY

SL 18328

BAYOU LA LOUTRE

T14S - R16E

SL 18745

TRACT 37984 - St. Bernard Parish, Louisiana

All of the lands now or formerly constituting the beds and bottoms of all water bodies of every nature and description the title of which vests in the State of Louisiana, together with all islands arising therein and other lands formed by accretion or by reliction, where allowed by law, excepting tax adjudicated lands, and not presently under mineral lease on December 14, 2005, situated in St. Bernard Parish, Louisiana, and more particularly described as follows: Beginning at a point having Coordinates of X = 2,542,964.00 and Y = 414,505.00; thence North 17,359.00 feet to a point having Coordinates of X = 2,542,964.00 and Y = 431,864.00; thence East 13,657.50 feet to a point on the West line of State Lease No. 18328 having Coordinates of X = 2,556,621.50 and Y = 431,864.00; thence along the boundary of said State Lease No. 18328 the following courses: South 3,809.50 feet and East 4,234.50 feet to a point having Coordinates of X = 2,560,856.00 and Y = 428,054.50; thence South 873.00 feet to a point on the North line of State Lease No. 18745 having Coordinates of X = 2,560,856.00 and Y = 427,181.50; thence along the boundary of said State Lease No. 18745 the following courses: West 1,081.50 feet, South 4,175.00 feet and East 1,081.50 feet to a point having Coordinates of X = 2,560,856.00 and Y = 423,006.50; thence South 8,501.50 feet to a point having Coordinates of X = 2,560,856.00 and Y = 414,505.00; thence West 17,892.00 feet to the point of beginning, containing approximately **549 acres**, all as more particularly outlined on a plat on file in the Office of Mineral Resources, Department of Natural Resources. All bearings, distances and coordinates are based on Louisiana Coordinate System of 1927, (North or South Zone), where applicable.

NOTE: The above description of the Tract nominated for lease has been provided and corrected, where required, exclusively by the nomination party. Any mineral lease selected from this Tract and awarded by the Louisiana State Mineral Board shall be without warranty of any kind, either express, implied, or statutory, including, but not limited to, the implied warranties of merchantability and fitness for a particular purpose. Should the mineral lease awarded by the Louisiana State Mineral Board be subsequently modified, cancelled or abrogated due to the existence of conflicting leases, operating agreements, private claims or other future obligations or conditions which may affect all or any portion of the leased Tract, it shall not relieve the Lessee of the obligation to pay any bonus due thereon to the Louisiana State Mineral Board, nor shall the Louisiana State Mineral Board be obligated to refund any consideration paid by the Lessor prior to such modification, cancellation, or abrogation, including, but not limited to, bonuses, rentals and royalties.

NOTE: The Office of Mineral Resources will require a minimum bonus of \$230 per acre and a minimum royalty of 23%.

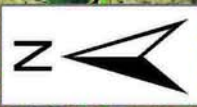
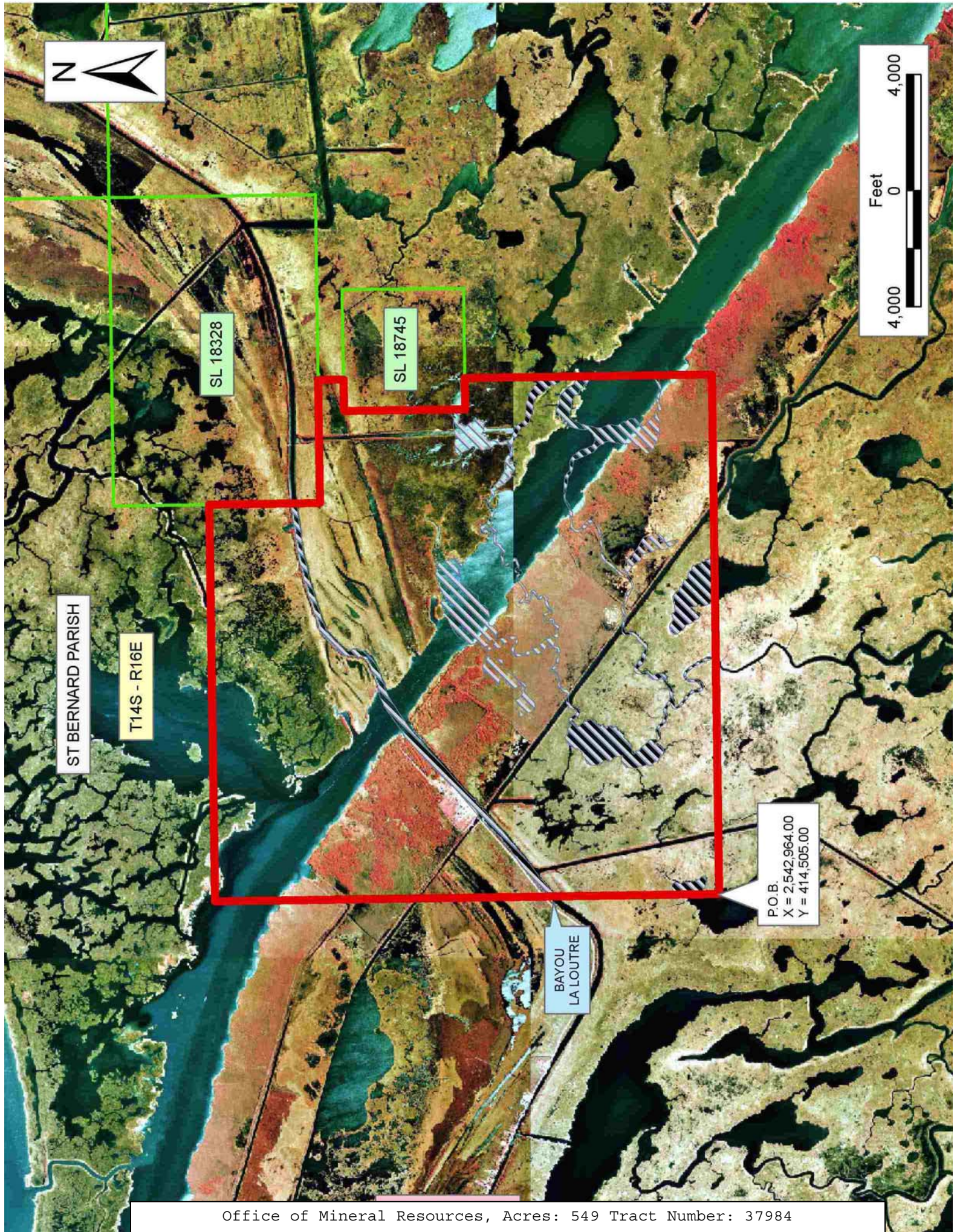
NOTE: The State of Louisiana does hereby reserve, and this lease shall be subject to, the imprescriptible right of surface use in the nature of a servitude in favor of the Department of Natural Resources, including its

Offices and Commissions, for the sole purpose of implementing, constructing, servicing and maintaining approved coastal zone management and/or restoration projects. Utilization of any and all rights derived under this lease by the mineral lessee, its agents, successors or assigns, shall not interfere with nor hinder the reasonable surface use by the Department of Natural Resources, its Offices or Commissions, as herein above reserved.

NOTE: The Department of Wildlife and Fisheries has designated certain areas in the coastal waters of the State of Louisiana as Oyster Seed Bed Areas. The exact location of those Seed Bed Areas must be obtained from the Department of Wildlife and Fisheries and any work done under a mineral lease from the State of Louisiana may necessarily be conducted in conformity with the rules and regulations promulgated by the said Department of Wildlife and Fisheries for Oyster Seed Bed Areas.

Applicant: KARE-SUE ENERGY, INC.

Bidder	Cash Payment	Price/Acre	Rental	Oil	Gas	Other



ST BERNARD PARISH

T14S - R16E

SL 18328

SL 18745

BAYOU
LA LOUTRE

P.O.B.
X = 2,542,964.00
Y = 414,505.00

TRACT 37985 - Portion of Blocks 45, and 46, Chandeleur Sound Area, St. Bernard Parish, Louisiana

All of the lands now or formerly constituting the beds and bottoms of all water bodies of every nature and description the title of which vests in the State of Louisiana, together with all islands arising therein and other lands formed by accretion or by reliction, where allowed by law, excepting tax adjudicated lands, and not presently under mineral lease on December 14, 2005, situated in St. Bernard Parish, Louisiana, and more particularly described as follows: Beginning at a point having Coordinates of X = 2,593,810.00 and Y = 426,707.00; thence East 18,480.00 feet to a point having Coordinates of X = 2,612,290.00 and Y = 426,707.00; thence South 15,877.00 feet to a point on the South line of Block 45, Chandeleur Sound Area having Coordinates of X = 2,612,290.00 and Y = 410,830.00; thence West 18,480.00 feet on the South lines of said Block 45 and Block 46, Chandeleur Sound Area to the Southwest corner of said Block 46 having Coordinates of X = 2,593,810.00 and Y = 410,830.00; thence North 15,877.00 feet to the point of beginning, **LESS AND EXCEPT** that portion, if any, of State Lease No. 2220 that may lie within the above described tract, containing approximately **2,241 acres**, all as more particularly outlined on a plat on file in the Office of Mineral Resources, Department of Natural Resources. All bearings, distances and coordinates are based on Louisiana Coordinate System of 1927, (North or South Zone), where applicable.

NOTE: The above description of the Tract nominated for lease has been provided and corrected, where required, exclusively by the nomination party. Any mineral lease selected from this Tract and awarded by the Louisiana State Mineral Board shall be without warranty of any kind, either express, implied, or statutory, including, but not limited to, the implied warranties of merchantability and fitness for a particular purpose. Should the mineral lease awarded by the Louisiana State Mineral Board be subsequently modified, cancelled or abrogated due to the existence of conflicting leases, operating agreements, private claims or other future obligations or conditions which may affect all or any portion of the leased Tract, it shall not relieve the Lessee of the obligation to pay any bonus due thereon to the Louisiana State Mineral Board, nor shall the Louisiana State Mineral Board be obligated to refund any consideration paid by the Lessor prior to such modification, cancellation, or abrogation, including, but not limited to, bonuses, rentals and royalties.

NOTE: The Office of Mineral Resources will require a minimum bonus of \$230 per acre and a minimum royalty of 23%.

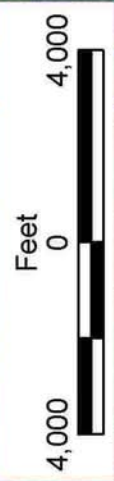
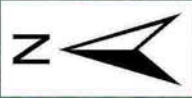
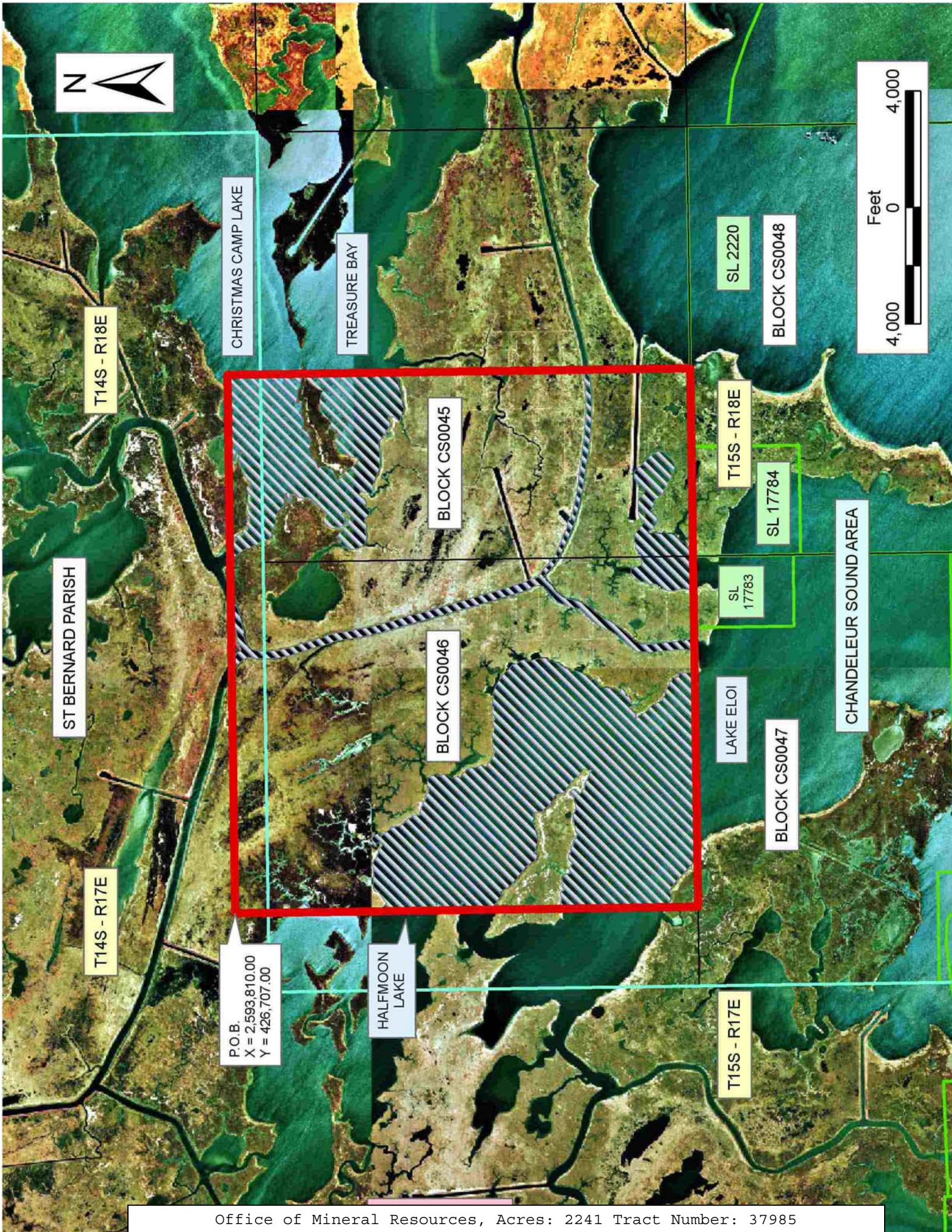
NOTE: The State of Louisiana does hereby reserve, and this lease shall be subject to, the imprescriptible right of surface use in the nature of a servitude in favor of the Department of Natural Resources, including its Offices and Commissions, for the sole purpose of implementing, constructing, servicing and maintaining approved coastal zone management and/or restoration projects. Utilization of any and all rights derived under this lease by the mineral lessee, its agents, successors or assigns,

shall not interfere with nor hinder the reasonable surface use by the Department of Natural Resources, its Offices or Commissions, as herein above reserved.

NOTE: The Department of Wildlife and Fisheries has designated certain areas in the coastal waters of the State of Louisiana as Oyster Seed Bed Areas. The exact location of those Seed Bed Areas must be obtained from the Department of Wildlife and Fisheries and any work done under a mineral lease from the State of Louisiana may necessarily be conducted in conformity with the rules and regulations promulgated by the said Department of Wildlife and Fisheries for Oyster Seed Bed Areas.

Applicant: KARE-SUE ENERGY, INC.

Bidder	Cash Payment	Price/Acre	Rental	Oil	Gas	Other



ST BERNARD PARISH

T14S - R18E

CHRISTMAS CAMP LAKE

TREASURE BAY

SL 2220

BLOCK CS0048



BLOCK CS0045

BLOCK CS0046

T15S - R18E

SL 17784

CHANDELEUR SOUND AREA

SL 17783

LAKE ELOI

BLOCK CS0047

T14S - R17E

P.O.B.
X = 2,593,810.00
Y = 426,707.00

HALFMOON LAKE

T15S - R17E

TRACT 37986 - Portion of Block 46, Chandeleur Sound Area, St. Bernard Parish, Louisiana

All of the lands now or formerly constituting the beds and bottoms of all water bodies of every nature and description the title of which vests in the State of Louisiana, together with all islands arising therein and other lands formed by accretion or by reliction, where allowed by law, excepting tax adjudicated lands, and not presently under mineral lease on December 14, 2005, situated in St. Bernard Parish, Louisiana, and more particularly described as follows: Beginning at a point having Coordinates of X = 2,593,810.00 and Y = 426,707.00; thence South 15,877.00 feet to a point having Coordinates of X = 2,593,810.00 and Y = 410,830.00; thence West 14,474.00 feet to a point having Coordinates of X = 2,579,336.00 and Y = 410,830.00; thence North 15,877.00 feet to a point having Coordinates of X = 2,579,336.00 and Y = 426,707.00; thence East 14,474.00 feet to the point of beginning, containing approximately **2,375 acres**, all as more particularly outlined on a plat on file in the Office of Mineral Resources, Department of Natural Resources. All bearings, distances and coordinates are based on Louisiana Coordinate System of 1927, (North or South Zone), where applicable.

NOTE: The above description of the Tract nominated for lease has been provided and corrected, where required, exclusively by the nomination party. Any mineral lease selected from this Tract and awarded by the Louisiana State Mineral Board shall be without warranty of any kind, either express, implied, or statutory, including, but not limited to, the implied warranties of merchantability and fitness for a particular purpose. Should the mineral lease awarded by the Louisiana State Mineral Board be subsequently modified, cancelled or abrogated due to the existence of conflicting leases, operating agreements, private claims or other future obligations or conditions which may affect all or any portion of the leased Tract, it shall not relieve the Lessee of the obligation to pay any bonus due thereon to the Louisiana State Mineral Board, nor shall the Louisiana State Mineral Board be obligated to refund any consideration paid by the Lessor prior to such modification, cancellation, or abrogation, including, but not limited to, bonuses, rentals and royalties.

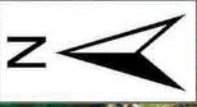
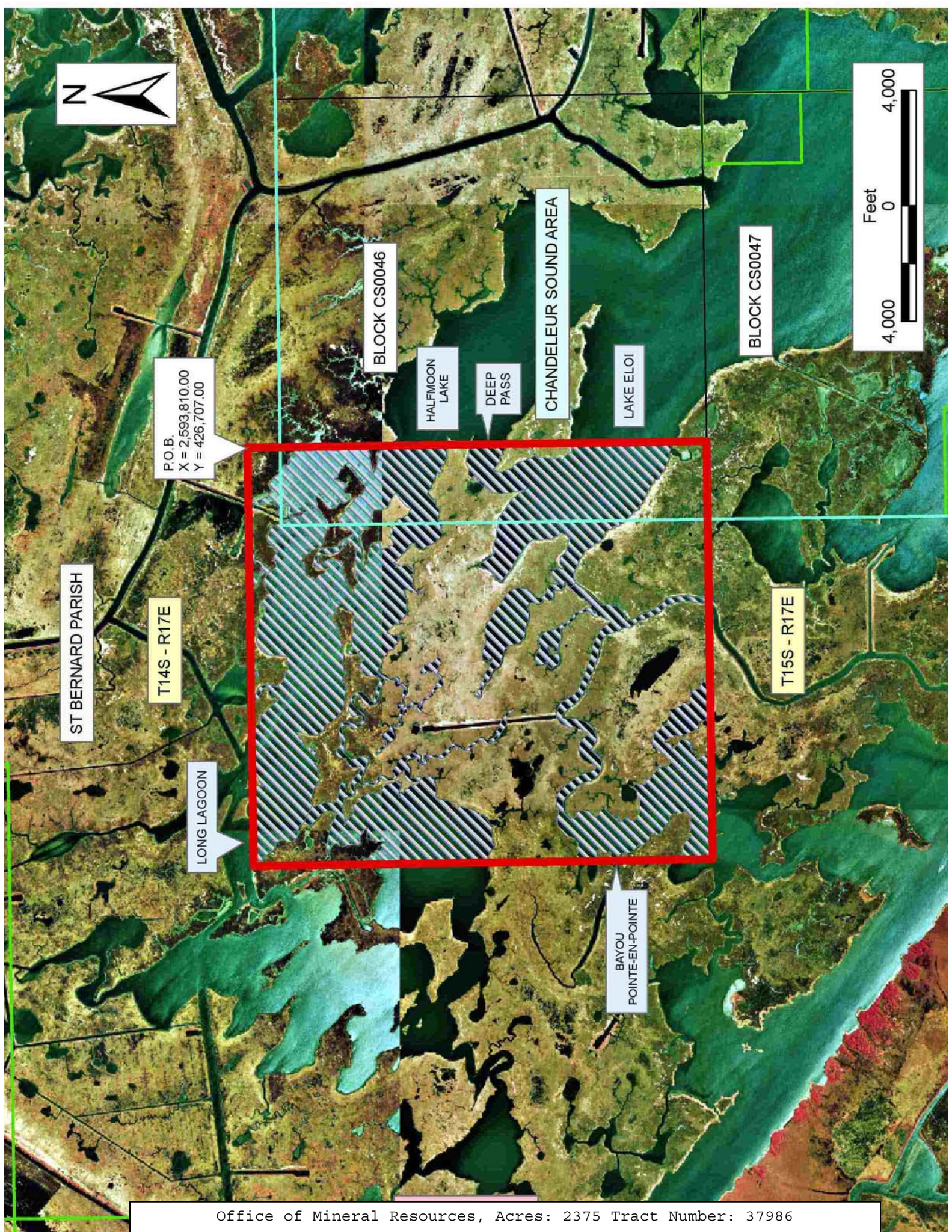
NOTE: The Office of Mineral Resources will require a minimum bonus of \$230 per acre and a minimum royalty of 23%.

NOTE: The State of Louisiana does hereby reserve, and this lease shall be subject to, the imprescriptible right of surface use in the nature of a servitude in favor of the Department of Natural Resources, including its Offices and Commissions, for the sole purpose of implementing, constructing, servicing and maintaining approved coastal zone management and/or restoration projects. Utilization of any and all rights derived under this lease by the mineral lessee, its agents, successors or assigns, shall not interfere with nor hinder the reasonable surface use by the Department of Natural Resources, its Offices or Commissions, as herein above reserved.

NOTE: The Department of Wildlife and Fisheries has designated certain areas in the coastal waters of the State of Louisiana as Oyster Seed Bed Areas. The exact location of those Seed Bed Areas must be obtained from the Department of Wildlife and Fisheries and any work done under a mineral lease from the State of Louisiana may necessarily be conducted in conformity with the rules and regulations promulgated by the said Department of Wildlife and Fisheries for Oyster Seed Bed Areas.

Applicant: KARE-SUE ENERGY, INC.

Bidder	Cash Payment	Price/Acre	Rental	Oil	Gas	Other



P.O.B.
X = 2,593,810.00
Y = 426,707.00

ST BERNARD PARISH

T14S - R17E

LONG LAGOON

BLOCK CS0046

HALFMOON LAKE

DEEP PASS

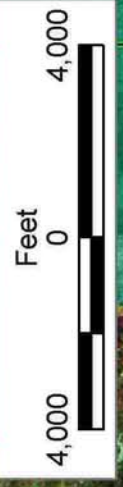
CHANDELEUR SOUND AREA

LAKE ELOI

BLOCK CS0047

T15S - R17E

BAYOU
POINTE-EN-POINTE



TRACT 37987 - St. Bernard Parish, Louisiana

All of the lands now or formerly constituting the beds and bottoms of all water bodies of every nature and description the title of which vests in the State of Louisiana, together with all islands arising therein and other lands formed by accretion or by reliction, where allowed by law, excepting tax adjudicated lands, and not presently under mineral lease on December 14, 2005, situated in St. Bernard Parish, Louisiana, and more particularly described as follows: Beginning at a point having Coordinates of X = 2,579,336.00 and Y = 423,713.00; thence South 18,480.00 feet to a point having Coordinates of X = 2,579,336.00 and Y = 405,233.00; thence West 18,480.00 feet to a point having Coordinates of X = 2,560,856.00 and Y = 405,233.00; thence North 17,773.50 feet to a point on the South line of State Lease No. 18745 having Coordinates of X = 2,560,856.00 and Y = 423,006.50; thence along the boundary of State Lease No. 18745 the following courses: East 3,093.50 feet and North 706.50 feet to a point having Coordinates of X = 2,563,949.50 and Y = 423,713.00; thence East 15,386.50 feet to the point of beginning, containing approximately **1,852 acres**, all as more particularly outlined on a plat on file in the Office of Mineral Resources, Department of Natural Resources. All bearings, distances and coordinates are based on Louisiana Coordinate System of 1927, (North or South Zone), where applicable.

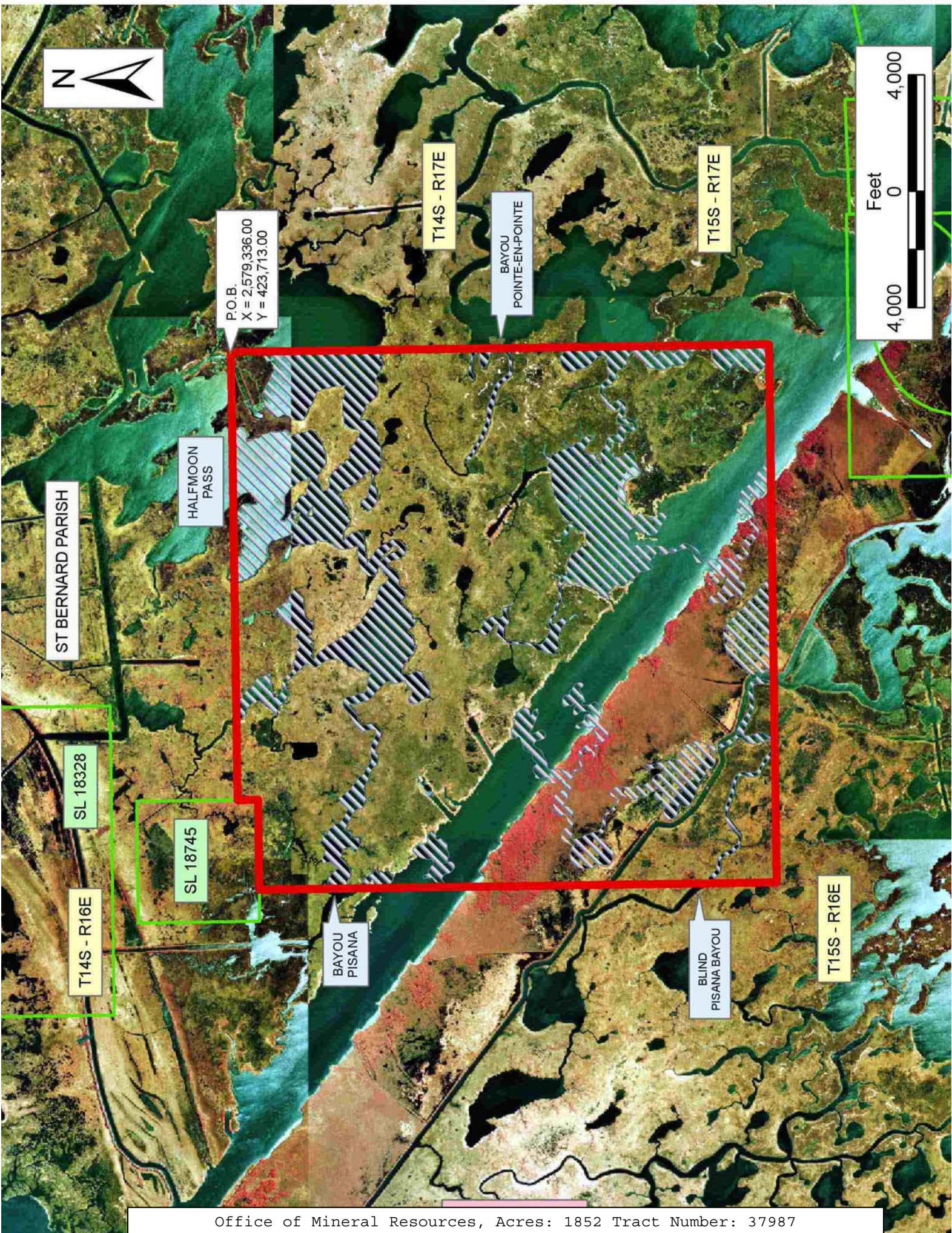
NOTE: The above description of the Tract nominated for lease has been provided and corrected, where required, exclusively by the nomination party. Any mineral lease selected from this Tract and awarded by the Louisiana State Mineral Board shall be without warranty of any kind, either express, implied, or statutory, including, but not limited to, the implied warranties of merchantability and fitness for a particular purpose. Should the mineral lease awarded by the Louisiana State Mineral Board be subsequently modified, cancelled or abrogated due to the existence of conflicting leases, operating agreements, private claims or other future obligations or conditions which may affect all or any portion of the leased Tract, it shall not relieve the Lessee of the obligation to pay any bonus due thereon to the Louisiana State Mineral Board, nor shall the Louisiana State Mineral Board be obligated to refund any consideration paid by the Lessor prior to such modification, cancellation, or abrogation, including, but not limited to, bonuses, rentals and royalties.

NOTE: The State of Louisiana does hereby reserve, and this lease shall be subject to, the imprescriptible right of surface use in the nature of a servitude in favor of the Department of Natural Resources, including its Offices and Commissions, for the sole purpose of implementing, constructing, servicing and maintaining approved coastal zone management and/or restoration projects. Utilization of any and all rights derived under this lease by the mineral lessee, its agents, successors or assigns, shall not interfere with nor hinder the reasonable surface use by the Department of Natural Resources, its Offices or Commissions, as herein above reserved.

NOTE: The Department of Wildlife and Fisheries has designated certain areas in the coastal waters of the State of Louisiana as Oyster Seed Bed Areas. The exact location of those Seed Bed Areas must be obtained from the Department of Wildlife and Fisheries and any work done under a mineral lease from the State of Louisiana may necessarily be conducted in conformity with the rules and regulations promulgated by the said Department of Wildlife and Fisheries for Oyster Seed Bed Areas.

Applicant: KARE-SUE ENERGY, INC.

Bidder	Cash Payment	Price/Acre	Rental	Oil	Gas	Other



P.O.B.
X = 2,579,336.00
Y = 423,713.00

T14S - R17E

BAYOU
EN-POINTE

T15S - R17E

ST BERNARD PARISH

HALFMOON
PASS

SL 18328

SL 18745

T14S - R16E

BAYOU
PISANA

BLIND
PISANA BAYOU

T15S - R16E