

TRACT 37968 - Portion of Block 6, North Lake Borgne Area, St. Bernard Parish, Louisiana

All of the lands now or formerly constituting the beds and bottoms of all water bodies of every nature and description the title of which vests in the State of Louisiana, together with all islands arising therein and other lands formed by accretion or by reliction, where allowed by law, excepting tax adjudicated lands, and not presently under mineral lease on December 14, 2005, situated in St. Bernard Parish, Louisiana, and more particularly described as follows: Beginning at a point having Coordinates of X = 2,555,306.00 and Y = 497,162.00; thence North 1,276.88 feet to a point on the boundary of State Lease No. 18066 having Coordinates of X = 2,555,306.00 and Y = 498,438.88; thence along the boundary of said State Lease No. 18066 the following courses: North 34 degrees 36 minutes 37 seconds East 686.63 feet and North 58 degrees 47 minutes 32 seconds West 455.98 feet to a point having Coordinates of X = 2,555,306.00 and Y = 499,240.27; thence North 8,325.73 feet to a point having Coordinates of X = 2,555,306.00 and Y = 507,566.00; thence East 6,367.00 feet to a point having Coordinates of X = 2,561,673.00 and Y = 507,566.00; thence South 10,404.00 feet to a point having Coordinates of X = 2,561,673.00 and Y = 497,162.00; thence West 6,367.00 feet to the point of beginning, containing approximately **1,517.13 acres**, all as more particularly outlined on a plat on file in the Office of Mineral Resources, Department of Natural Resources. All bearings, distances and coordinates are based on Louisiana Coordinate System of 1927, (North or South Zone), where applicable.

NOTE: The above description of the Tract nominated for lease has been provided and corrected, where required, exclusively by the nomination party. Any mineral lease selected from this Tract and awarded by the Louisiana State Mineral Board shall be without warranty of any kind, either express, implied, or statutory, including, but not limited to, the implied warranties of merchantability and fitness for a particular purpose. Should the mineral lease awarded by the Louisiana State Mineral Board be subsequently modified, cancelled or abrogated due to the existence of conflicting leases, operating agreements, private claims or other future obligations or conditions which may affect all or any portion of the leased Tract, it shall not relieve the Lessee of the obligation to pay any bonus due thereon to the Louisiana State Mineral Board, nor shall the Louisiana State Mineral Board be obligated to refund any consideration paid by the Lessor prior to such modification, cancellation, or abrogation, including, but not limited to, bonuses, rentals and royalties.

NOTE: The Office of Mineral Resources will require a minimum bonus of \$230 per acre and a minimum royalty of 23%.

NOTE: The State of Louisiana does hereby reserve, and this lease shall be subject to, the imprescriptible right of surface use in the nature of a servitude in favor of the Department of Natural Resources, including its Offices and Commissions, for the sole purpose of implementing,

constructing, servicing and maintaining approved coastal zone management and/or restoration projects. Utilization of any and all rights derived under this lease by the mineral lessee, its agents, successors or assigns, shall not interfere with nor hinder the reasonable surface use by the Department of Natural Resources, its Offices or Commissions, as herein above reserved.

NOTE: The Department of Wildlife and Fisheries has designated certain areas in the coastal waters of the State of Louisiana as Oyster Seed Bed Areas. The exact location of those Seed Bed Areas must be obtained from the Department of Wildlife and Fisheries and any work done under a mineral lease from the State of Louisiana may necessarily be conducted in conformity with the rules and regulations promulgated by the said Department of Wildlife and Fisheries for Oyster Seed Bed Areas.

Applicant: KARE-SUE ENERGY, INC.

Bidder	Cash Payment	Price/Acre	Rental	Oil	Gas	Other

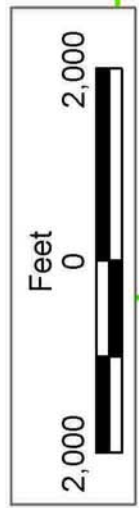


ST BERNARD PARISH

NORTH LAKE BORGNE AREA

BLOCK LB0006

LAKE BORGNE



P.O.B.
X = 2,555,306.00
Y = 497,162.00

SL 18066

SL 18567

SL 18065

SL 18067

TRACT 37969 - Portion of Block 6, North Lake Borgne Area, St. Bernard Parish, Louisiana

All of the lands now or formerly constituting the beds and bottoms of all water bodies of every nature and description the title of which vests in the State of Louisiana, together with all islands arising therein and other lands formed by accretion or by reliction, where allowed by law, excepting tax adjudicated lands, and not presently under mineral lease on December 14, 2005, situated in St. Bernard Parish, Louisiana, and more particularly described as follows: Beginning at a point having Coordinates of X = 2,561,673.00 and Y = 497,162.00; thence North 8,157.00 feet to a point located within Block 6, North Lake Borgne Area having Coordinates of X = 2,561,673.00 and Y = 505,319.00; thence East 13,350.00 feet to a point having Coordinates of X = 2,575,023.00 and Y = 505,319.00; thence South approximately 7,455 feet to a point on the boundary of the Biloxi Wildlife Management Area having a Coordinate of X = 2,575,023.00; thence Southwesterly on the boundary of said Biloxi Wildlife Management Area to the point of intersection with an East West line having a Coordinate of Y = 497,162.00; thence West approximately 12,112 feet to the point of beginning, **LESS AND EXCEPT** any portion of the Biloxi Wildlife Management Area which may lie within the above described tract, containing approximately **2,490 acres**, all as more particularly outlined on a plat on file in the Office of Mineral Resources, Department of Natural Resources. All bearings, distances and coordinates are based on Louisiana Coordinate System of 1927, (North or South Zone), where applicable.

NOTE: The above description of the Tract nominated for lease has been provided and corrected, where required, exclusively by the nomination party. Any mineral lease selected from this Tract and awarded by the Louisiana State Mineral Board shall be without warranty of any kind, either express, implied, or statutory, including, but not limited to, the implied warranties of merchantability and fitness for a particular purpose. Should the mineral lease awarded by the Louisiana State Mineral Board be subsequently modified, cancelled or abrogated due to the existence of conflicting leases, operating agreements, private claims or other future obligations or conditions which may affect all or any portion of the leased Tract, it shall not relieve the Lessee of the obligation to pay any bonus due thereon to the Louisiana State Mineral Board, nor shall the Louisiana State Mineral Board be obligated to refund any consideration paid by the Lessor prior to such modification, cancellation, or abrogation, including, but not limited to, bonuses, rentals and royalties.

NOTE: The Office of Mineral Resources will require a minimum bonus of \$230 per acre and a minimum royalty of 23%.

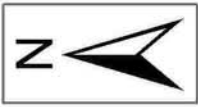
NOTE: The State of Louisiana does hereby reserve, and this lease shall be subject to, the imprescriptible right of surface use in the nature of a servitude in favor of the Department of Natural Resources, including its Offices and Commissions, for the sole purpose of implementing, constructing, servicing and maintaining approved coastal zone management

and/or restoration projects. Utilization of any and all rights derived under this lease by the mineral lessee, its agents, successors or assigns, shall not interfere with nor hinder the reasonable surface use by the Department of Natural Resources, its Offices or Commissions, as herein above reserved.

NOTE: The Department of Wildlife and Fisheries has designated certain areas in the coastal waters of the State of Louisiana as Oyster Seed Bed Areas. The exact location of those Seed Bed Areas must be obtained from the Department of Wildlife and Fisheries and any work done under a mineral lease from the State of Louisiana may necessarily be conducted in conformity with the rules and regulations promulgated by the said Department of Wildlife and Fisheries for Oyster Seed Bed Areas.

Applicant: KARE-SUE ENERGY, INC.

Bidder	Cash Payment	Price/Acre	Rental	Oil	Gas	Other



ST BERNARD PARISH

BLOCK LB0006

NORTH LAKE BORGNE AREA

LAKE BORGNE

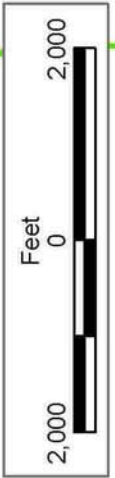
BILOXI WMA

T12S - R17E

SL 17769

SL 17810

P.O.B.
X = 2,561,673.00
Y = 497,162.00



TRACT 37970 - St. Bernard Parish, Louisiana

All of the lands now or formerly constituting the beds and bottoms of all water bodies of every nature and description the title of which vests in the State of Louisiana, together with all islands arising therein and other lands formed by accretion or by reliction, where allowed by law, excepting tax adjudicated lands, and not presently under mineral lease on December 14, 2005, situated in St. Bernard Parish, Louisiana, and more particularly described as follows: Beginning at a point having Coordinates of X = 2,593,157.00 and Y = 502,074.00; thence South 5,438.00 feet to a point on the North line of State Lease No. 18157 having Coordinates of X = 2,593,157.00 and Y = 496,636.00; thence West 592.40 feet along the North line of said State Lease No. 18157 to its Northwest corner also being the Northeast corner of State Lease No. 18436 having Coordinates of X = 2,592,564.60 and Y = 496,636.00; thence West 216.60 feet along the North line of said State Lease No. 18436 to the Southeast corner of State Lease No. 18255 having Coordinates of X = 2,592,348.00 and Y = 496,636.00; thence along the boundary of said State Lease No. 18255 the following courses: North 3,465.00 feet, West 5,203.00 feet and South 3,465.00 feet to its Southwest corner also being the Northwest corner of said State Lease No. 18436 having Coordinates of X = 2,587,145.00 and Y = 496,636.00; thence along the boundary of said State Lease No. 18436 the following courses: South 1,610.00 feet and East 5,419.60 feet to its Southeast corner also being a point on the West line of said State Lease No. 18157 having Coordinates of X = 2,592,564.60 and Y = 495,026.00; thence South 3,856.73 feet along the West line of said State Lease No. 18157 to its Southwest corner having Coordinates of X = 2,592,564.60 and Y = 491,169.27; thence South 470.85 feet to a point having Coordinates of X = 2,592,564.60 and Y = 490,698.43; thence West 9,534.04 feet to a corner of the Biloxi Wildlife Management Area having Coordinates of X = 2,583,030.56 and Y = 490,698.43; thence South 88 degrees 14 minutes 02 seconds West 2,650.32 feet along the boundary of said Biloxi Wildlife Management Area to the Southeast corner of State Lease No. 17975 having Coordinates of X = 2,580,381.50 and Y = 490,616.74; thence South 88 degrees 14 minutes 02 seconds West 543.93 feet along the boundary of said Biloxi Wildlife Management Area and said State Lease No. 17975 to a point having Coordinates of X = 2,579,837.83 and Y = 490,599.98; thence South 86 degrees 30 minutes 57 seconds West 2,027.90 feet along the boundary of said Biloxi Wildlife Management Area and said State Lease No. 17975 to its Northwest corner having Coordinates of X = 2,577,813.68 and Y = 490,476.73; thence along the boundary of said Biloxi Wildlife Management Area the following courses: North 02 degrees 52 minutes 58 seconds West 5,341.39 feet, North 03 degrees 50 minutes 37 seconds West 123.80 feet, North 87 degrees 16 minutes 02 seconds East 5,278.59 feet, North 14 degrees 00 minutes 47 seconds West 5,630.08 feet, and North 01 degrees 14 minutes 31 seconds West 425.02 feet to a point having Coordinates of X = 2,581,436.86 and Y = 502,074.00; thence East 11,720.14 feet to the point of beginning, **LESS AND EXCEPT** any portion of the Biloxi Wildlife Management Area that may lie within the above described tract, containing approximately **1,168 acres**, all as more particularly outlined on a plat on

file in the Office of Mineral Resources, Department of Natural Resources. All bearings, distances and coordinates are based on Louisiana Coordinate System of 1927, (North or South Zone), where applicable.

NOTE: The above description of the Tract nominated for lease has been provided and corrected, where required, exclusively by the nomination party. Any mineral lease selected from this Tract and awarded by the Louisiana State Mineral Board shall be without warranty of any kind, either express, implied, or statutory, including, but not limited to, the implied warranties of merchantability and fitness for a particular purpose. Should the mineral lease awarded by the Louisiana State Mineral Board be subsequently modified, cancelled or abrogated due to the existence of conflicting leases, operating agreements, private claims or other future obligations or conditions which may affect all or any portion of the leased Tract, it shall not relieve the Lessee of the obligation to pay any bonus due thereon to the Louisiana State Mineral Board, nor shall the Louisiana State Mineral Board be obligated to refund any consideration paid by the Lessor prior to such modification, cancellation, or abrogation, including, but not limited to, bonuses, rentals and royalties.

NOTE: The Office of Mineral Resources will require a minimum bonus of \$230 per acre and a minimum royalty of 23%.

NOTE: The State of Louisiana does hereby reserve, and this lease shall be subject to, the imprescriptible right of surface use in the nature of a servitude in favor of the Department of Natural Resources, including its Offices and Commissions, for the sole purpose of implementing, constructing, servicing and maintaining approved coastal zone management and/or restoration projects. Utilization of any and all rights derived under this lease by the mineral lessee, its agents, successors or assigns, shall not interfere with nor hinder the reasonable surface use by the Department of Natural Resources, its Offices or Commissions, as herein above reserved.

NOTE: The Department of Wildlife and Fisheries has designated certain areas in the coastal waters of the State of Louisiana as Oyster Seed Bed Areas. The exact location of those Seed Bed Areas must be obtained from the Department of Wildlife and Fisheries and any work done under a mineral lease from the State of Louisiana may necessarily be conducted in conformity with the rules and regulations promulgated by the said Department of Wildlife and Fisheries for Oyster Seed Bed Areas.

Applicant: KARE-SUE ENERGY, INC.

Bidder	Cash Payment	Price/Acre	Rental	Oil	Gas	Other



TRACT 37971 - St. Bernard Parish, Louisiana

All of the lands now or formerly constituting the beds and bottoms of all water bodies of every nature and description the title of which vests in the State of Louisiana, together with all islands arising therein and other lands formed by accretion or by reliction, where allowed by law, excepting tax adjudicated lands, and not presently under mineral lease on December 14, 2005, situated in St. Bernard Parish, Louisiana, and more particularly described as follows: Beginning at a point having Coordinates of X = 2,593,157.00 and Y = 502,074.00; thence East 5,164.00 feet to the Southwest corner of State Lease No. 18251 having Coordinates of X = 2,598,321.00 and Y = 502,074.00; thence East 2,250.00 feet on the South line of said State Lease No. 18251 to the Northwest corner of State Lease No. 18256 having Coordinates of X = 2,600,571.00 and Y = 502,074.00; thence South 5,438.00 feet on the West line of said State Lease No. 18256 to its Southwest corner and a point on the North line of State Lease No. 18457 having Coordinates of X = 2,600,571.00 and Y = 496,636.00; thence along the boundary of said State Lease No. 18457 the following courses: West 1,813.00 feet and South 5,266.89 feet to its Westernmost Southwest corner and a point on the boundary of the Biloxi Wildlife Management Area having Coordinates of X = 2,598,758.00 and Y = 491,369.11; thence South 87 degrees 44 minutes 54 seconds West 994.52 feet on the boundary of said Biloxi Wildlife Management Area to the Southeast corner of State Lease No. 18157 having Coordinates of X = 2,597,764.25 and Y = 491,330.03; thence along the boundary of said State Lease No. 18157 the following courses: North 5,305.97 feet and West 4,607.25 feet to a point having Coordinates of X = 2,593,157.00 and Y = 496,636.00; thence North 5,438.00 feet to the point of beginning, **LESS AND EXCEPT** any portion of the Biloxi Wildlife Management Area that may lie within the above described tract, containing approximately **403 acres**, all as more particularly outlined on a plat on file in the Office of Mineral Resources, Department of Natural Resources. All bearings, distances and coordinates are based on Louisiana Coordinate System of 1927, (North or South Zone), where applicable.

NOTE: The above description of the Tract nominated for lease has been provided and corrected, where required, exclusively by the nomination party. Any mineral lease selected from this Tract and awarded by the Louisiana State Mineral Board shall be without warranty of any kind, either express, implied, or statutory, including, but not limited to, the implied warranties of merchantability and fitness for a particular purpose. Should the mineral lease awarded by the Louisiana State Mineral Board be subsequently modified, cancelled or abrogated due to the existence of conflicting leases, operating agreements, private claims or other future obligations or conditions which may affect all or any portion of the leased Tract, it shall not relieve the Lessee of the obligation to pay any bonus due thereon to the Louisiana State Mineral Board, nor shall the Louisiana State Mineral Board be obligated to refund any consideration paid by the Lessor prior to such modification, cancellation, or abrogation, including, but not limited to, bonuses, rentals and royalties.

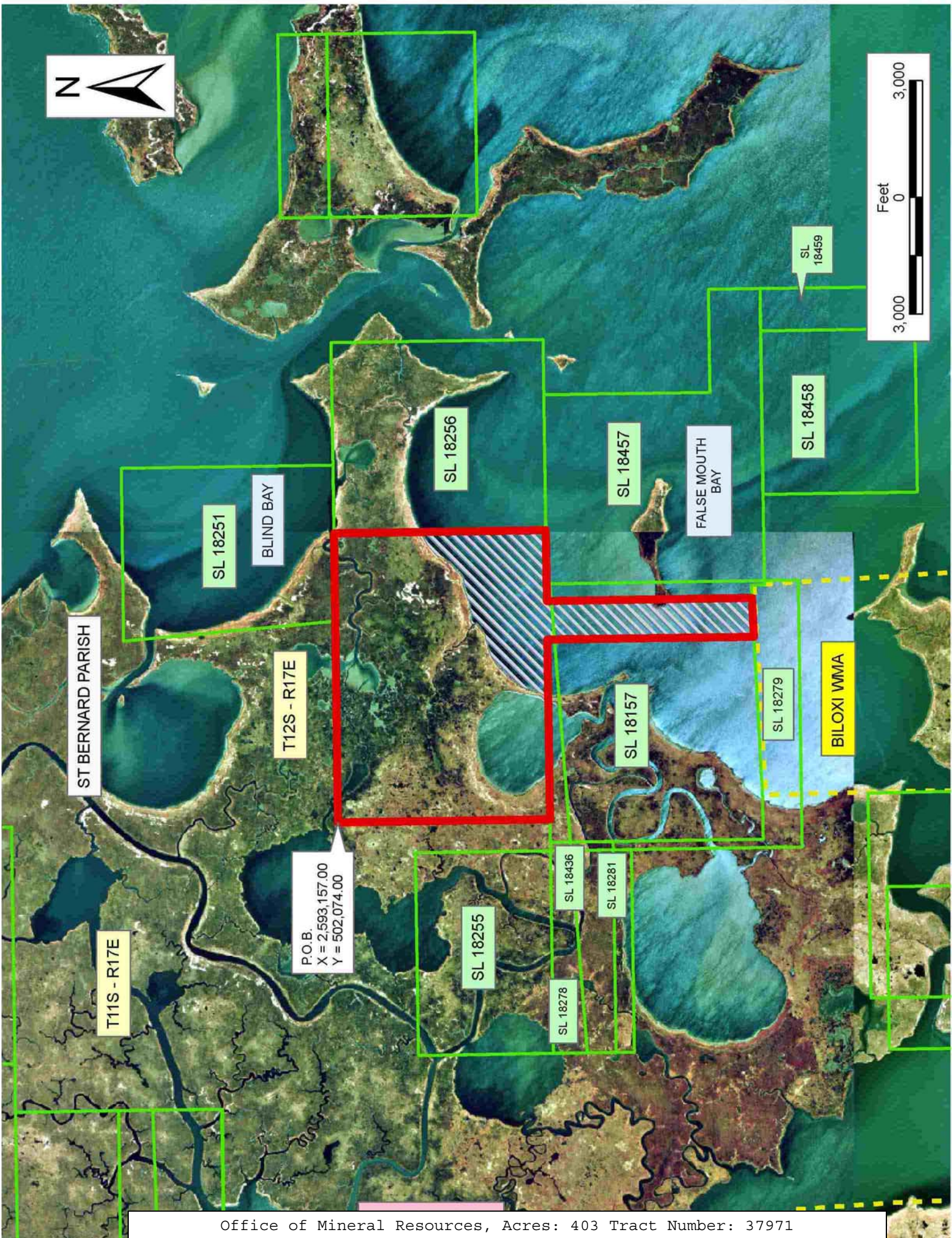
NOTE: The Office of Mineral Resources will require a minimum bonus of \$230 per acre and a minimum royalty of 23%.

NOTE: The State of Louisiana does hereby reserve, and this lease shall be subject to, the imprescriptible right of surface use in the nature of a servitude in favor of the Department of Natural Resources, including its Offices and Commissions, for the sole purpose of implementing, constructing, servicing and maintaining approved coastal zone management and/or restoration projects. Utilization of any and all rights derived under this lease by the mineral lessee, its agents, successors or assigns, shall not interfere with nor hinder the reasonable surface use by the Department of Natural Resources, its Offices or Commissions, as herein above reserved.

NOTE: The Department of Wildlife and Fisheries has designated certain areas in the coastal waters of the State of Louisiana as Oyster Seed Bed Areas. The exact location of those Seed Bed Areas must be obtained from the Department of Wildlife and Fisheries and any work done under a mineral lease from the State of Louisiana may necessarily be conducted in conformity with the rules and regulations promulgated by the said Department of Wildlife and Fisheries for Oyster Seed Bed Areas.

Applicant: KARE-SUE ENERGY, INC.

Bidder	Cash Payment	Price/Acre	Rental	Oil	Gas	Other



TRACT 37972 - St. Bernard Parish, Louisiana

All of the lands now or formerly constituting the beds and bottoms of all water bodies of every nature and description the title of which vests in the State of Louisiana, together with all islands arising therein and other lands formed by accretion or by reliction, where allowed by law, excepting tax adjudicated lands, and not presently under mineral lease on December 14, 2005, situated in St. Bernard Parish, Louisiana, and more particularly described as follows: Beginning at a point having Coordinates of X = 2,614,516.00 and Y = 502,074.00; thence South 11,027.00 feet to a point having Coordinates of X = 2,614,516.00 and Y = 491,047.00; thence West 7,823.76 feet to the Southeast corner of State Lease No. 18457, also being the Northeast corner of State Lease No. 18459, having Coordinates of X = 2,606,692.24 and Y = 491,047.00; thence along the boundary of said State Lease No. 18457 the following courses: North 1,320.00 feet, West 2,640.00 feet, and North 4,269.00 feet to its Northeast corner and a point on the South line of State Lease No. 18256 having Coordinates of X = 2,604,052.24 and Y = 496,636.00; thence along the boundary of said State Lease No. 18256 the following courses: East 1,420.76 feet and North 5,438.00 feet to its Northeast corner having Coordinates of X = 2,605,473.00 and Y = 502,074.00; thence East 3,211.00 feet to the Northwest corner of State Lease No. 18257, also being the Southwest corner of State Lease No. 18252, having Coordinates of X = 2,608,684.00 and Y = 502,074.00; thence along the boundary of said State Lease No. 18257 the following courses: South 3,795.00 feet, East 4,703.00 feet, and North 3,795.00 feet to its Northeast corner, also being the Southeast corner of said State Lease No. 18252, having Coordinates of X = 2,613,387.00 and Y = 502,074.00; thence East 1,129.00 feet to the point of beginning, containing approximately **1,616 acres**, all as more particularly outlined on a plat on file in the Office of Mineral Resources, Department of Natural Resources. All bearings, distances and coordinates are based on Louisiana Coordinate System of 1927, (North or South Zone), where applicable.

NOTE: The above description of the Tract nominated for lease has been provided and corrected, where required, exclusively by the nomination party. Any mineral lease selected from this Tract and awarded by the Louisiana State Mineral Board shall be without warranty of any kind, either express, implied, or statutory, including, but not limited to, the implied warranties of merchantability and fitness for a particular purpose. Should the mineral lease awarded by the Louisiana State Mineral Board be subsequently modified, cancelled or abrogated due to the existence of conflicting leases, operating agreements, private claims or other future obligations or conditions which may affect all or any portion of the leased Tract, it shall not relieve the Lessee of the obligation to pay any bonus due thereon to the Louisiana State Mineral Board, nor shall the Louisiana State Mineral Board be obligated to refund any consideration paid by the Lessor prior to such modification, cancellation, or abrogation, including, but not limited to, bonuses, rentals and royalties.

NOTE: The Office of Mineral Resources will require a minimum bonus of \$230 per acre and a minimum royalty of 23%.

NOTE: The State of Louisiana does hereby reserve, and this lease shall be subject to, the imprescriptible right of surface use in the nature of a servitude in favor of the Department of Natural Resources, including its Offices and Commissions, for the sole purpose of implementing, constructing, servicing and maintaining approved coastal zone management and/or restoration projects. Utilization of any and all rights derived under this lease by the mineral lessee, its agents, successors or assigns, shall not interfere with nor hinder the reasonable surface use by the Department of Natural Resources, its Offices or Commissions, as herein above reserved.

NOTE: The Department of Wildlife and Fisheries has designated certain areas in the coastal waters of the State of Louisiana as Oyster Seed Bed Areas. The exact location of those Seed Bed Areas must be obtained from the Department of Wildlife and Fisheries and any work done under a mineral lease from the State of Louisiana may necessarily be conducted in conformity with the rules and regulations promulgated by the said Department of Wildlife and Fisheries for Oyster Seed Bed Areas.

Applicant: KARE-SUE ENERGY, INC.

Bidder	Cash Payment	Price/Acre	Rental	Oil	Gas	Other



BLOCK CX0023

BLOCK CX0046

CHANDELEUR SOUND AREA
ADDITION, REVISED



SL 18493

SL 18253

P.O.B.
X = 2,614,516.00
Y = 502,074.00

NINEMILE
BAY

BAY BOUDREAU

ST BERNARD PARISH

SL 18252

SL 18257

T12S - R18E

NINEMILE
BAYOU

SL 18459

SL 18251

BLIND BAY

SL 18256

SL 18457

FALSE MOUTH
BAY

SL 18458

TRACT 37973 - Portion of Blocks 23, and 46, Chandeleur Sound Area Addition, Revised, St. Bernard Parish, Louisiana

All of the lands now or formerly constituting the beds and bottoms of all water bodies of every nature and description the title of which vests in the State of Louisiana, together with all islands arising therein and other lands formed by accretion or by reliction, where allowed by law, excepting tax adjudicated lands, and not presently under mineral lease on December 14, 2005, situated in St. Bernard Parish, Louisiana, and more particularly described as follows: Beginning at a point having Coordinates of X = 2,614,516.00 and Y = 502,074.00; thence East 10,923.00 feet to a point located within Block 23, Chandeleur Sound Area Addition, Revised having Coordinates of X = 2,625,439.00 and Y = 502,074.00; thence South 11,027.00 feet to a point located within Block 46, Chandeleur Sound Area Addition, Revised having Coordinates of X = 2,625,439.00 and Y = 491,047.00; thence West 10,923.00 feet to a point having Coordinates of X = 2,614,516.00 and Y = 491,047.00; thence North 11,027.00 feet to the point of beginning, containing approximately **2,499 acres**, all as more particularly outlined on a plat on file in the Office of Mineral Resources, Department of Natural Resources. All bearings, distances and coordinates are based on Louisiana Coordinate System of 1927, (North or South Zone), where applicable.

NOTE: The above description of the Tract nominated for lease has been provided and corrected, where required, exclusively by the nomination party. Any mineral lease selected from this Tract and awarded by the Louisiana State Mineral Board shall be without warranty of any kind, either express, implied, or statutory, including, but not limited to, the implied warranties of merchantability and fitness for a particular purpose. Should the mineral lease awarded by the Louisiana State Mineral Board be subsequently modified, cancelled or abrogated due to the existence of conflicting leases, operating agreements, private claims or other future obligations or conditions which may affect all or any portion of the leased Tract, it shall not relieve the Lessee of the obligation to pay any bonus due thereon to the Louisiana State Mineral Board, nor shall the Louisiana State Mineral Board be obligated to refund any consideration paid by the Lessor prior to such modification, cancellation, or abrogation, including, but not limited to, bonuses, rentals and royalties.

NOTE: The Office of Mineral Resources will require a minimum bonus of \$230 per acre and a minimum royalty of 23%.

NOTE: The State of Louisiana does hereby reserve, and this lease shall be subject to, the imprescriptible right of surface use in the nature of a servitude in favor of the Department of Natural Resources, including its Offices and Commissions, for the sole purpose of implementing, constructing, servicing and maintaining approved coastal zone management and/or restoration projects. Utilization of any and all rights derived under this lease by the mineral lessee, its agents, successors or assigns, shall not interfere with nor hinder the reasonable surface use by the

Department of Natural Resources, its Offices or Commissions, as herein above reserved.

NOTE: The Department of Wildlife and Fisheries has designated certain areas in the coastal waters of the State of Louisiana as Oyster Seed Bed Areas. The exact location of those Seed Bed Areas must be obtained from the Department of Wildlife and Fisheries and any work done under a mineral lease from the State of Louisiana may necessarily be conducted in conformity with the rules and regulations promulgated by the said Department of Wildlife and Fisheries for Oyster Seed Bed Areas.

Applicant: KARE-SUE ENERGY, INC.

Bidder	Cash Payment	Price/Acre	Rental	Oil	Gas	Other



ST BERNARD PARISH

THREE MILE BAY

BLOCK CX0023

BLOCK CX0046

CHANDELEUR SOUND AREA ADDITION, REVISED



BAY BOUDREAU



SL 18253

SL 18493

P.O.B.
X = 2,614,516.00
Y = 502,074.00

SL 18252

T12S - R18E

SL 18257

NINEMILE BAY

TRACT 37974 - Jefferson Davis Parish, Louisiana

All of the lands now or formerly constituting the beds and bottoms of all water bodies of every nature and description the title of which vests in the State of Louisiana, together with all islands arising therein and other lands formed by accretion or by reliction, where allowed by law, excepting tax adjudicated lands, and not presently under mineral lease on December 14, 2005, situated in Jefferson Davis Parish, Louisiana, and more particularly described as follows: Beginning at a point having Coordinates of X = 1,578,000.00 and Y = 516,000.00; thence South approximately 1,700 feet to a point on the Northern boundary of State Lease No. 5419, as amended, having a Coordinate of X = 1,578,000.00; thence on the Northern boundaries of said State Lease No. 5419, State Lease No. 7712, as amended, and State Lease No. 14531, as amended, the following courses: Northwesterly, Southwesterly and Northwesterly to a point on the Northern boundary of said State Lease No. 14531 having Coordinates of X = 1,572,000.00 and Y = 513,568.10; thence North 2,431.90 feet to a point having Coordinates of X = 1,572,000.00 and Y = 516,000.00; thence East 6,000.00 feet to the point of beginning, containing approximately **65 acres**, all as more particularly outlined on a plat on file in the Office of Mineral Resources, Department of Natural Resources. All bearings, distances and coordinates are based on Louisiana Coordinate System of 1927, (North or South Zone), where applicable.

NOTE: The above description of the Tract nominated for lease has been provided and corrected, where required, exclusively by the nomination party. Any mineral lease selected from this Tract and awarded by the Louisiana State Mineral Board shall be without warranty of any kind, either express, implied, or statutory, including, but not limited to, the implied warranties of merchantability and fitness for a particular purpose. Should the mineral lease awarded by the Louisiana State Mineral Board be subsequently modified, cancelled or abrogated due to the existence of conflicting leases, operating agreements, private claims or other future obligations or conditions which may affect all or any portion of the leased Tract, it shall not relieve the Lessee of the obligation to pay any bonus due thereon to the Louisiana State Mineral Board, nor shall the Louisiana State Mineral Board be obligated to refund any consideration paid by the Lessor prior to such modification, cancellation, or abrogation, including, but not limited to, bonuses, rentals and royalties.

NOTE: The State of Louisiana does hereby reserve, and this lease shall be subject to, the imprescriptible right of surface use in the nature of a servitude in favor of the Department of Natural Resources, including its Offices and Commissions, for the sole purpose of implementing, constructing, servicing and maintaining approved coastal zone management and/or restoration projects. Utilization of any and all rights derived under this lease by the mineral lessee, its agents, successors or assigns, shall not interfere with nor hinder the reasonable surface use by the Department of Natural Resources, its Offices or Commissions, as herein above reserved.

Applicant: ROBLYN PETROLEUM CORPORATION

Bidder	Cash Payment	Price/Acre	Rental	Oil	Gas	Other

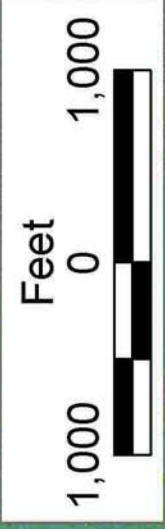


P.O.B.
X=1,578,000.00
Y=516,000.00

JEFFERSON DAVIS PARISH

T11S - R3W

VERMILION PARISH



SL 5419

SL 7712

SL 14531

SL 11384

SL 7584



TRACT 37975 - St. Bernard Parish, Louisiana

All of the lands now or formerly constituting the beds and bottoms of all water bodies of every nature and description the title of which vests in the State of Louisiana, together with all islands arising therein and other lands formed by accretion or by reliction, where allowed by law, excepting tax adjudicated lands, and not presently under mineral lease on December 14, 2005, situated in St. Bernard Parish, Louisiana, and more particularly described as follows: Beginning at a point having Coordinates of X = 2,555,306.00 and Y = 497,162.00; thence East approximately 18,479 feet to a point on the boundary of the Biloxi Wildlife Management Area having a Coordinate of Y = 497,162.00; thence Southwesterly along the boundary of said Biloxi Wildlife Management Area to the Northeast corner of State Lease No. 17810 having a Coordinate of Y = 495,009.73; thence along the boundary of said State Lease No. 17810 the following courses: West approximately 3,708 feet and South approximately 3,330 feet to a point on said Biloxi Wildlife Management Area having a Coordinate of X = 2,565,494.84; thence Southwesterly along the boundary of said Biloxi Wildlife Management Area to the point of intersection with a North South line having a Coordinate of X = 2,555,306.00; thence North approximately 10494 feet to the point of beginning, **LESS AND EXCEPT** any portion of the Biloxi Wildlife Management Area, State Lease Nos. 17768, 17769, and 17810 that may lie within the above described tract, containing approximately **2,284 acres**, all as more particularly outlined on a plat on file in the Office of Mineral Resources, Department of Natural Resources. All bearings, distances and coordinates are based on Louisiana Coordinate System of 1927, (North or South Zone), where applicable.

NOTE: The above description of the Tract nominated for lease has been provided and corrected, where required, exclusively by the nomination party. Any mineral lease selected from this Tract and awarded by the Louisiana State Mineral Board shall be without warranty of any kind, either express, implied, or statutory, including, but not limited to, the implied warranties of merchantability and fitness for a particular purpose. Should the mineral lease awarded by the Louisiana State Mineral Board be subsequently modified, cancelled or abrogated due to the existence of conflicting leases, operating agreements, private claims or other future obligations or conditions which may affect all or any portion of the leased Tract, it shall not relieve the Lessee of the obligation to pay any bonus due thereon to the Louisiana State Mineral Board, nor shall the Louisiana State Mineral Board be obligated to refund any consideration paid by the Lessor prior to such modification, cancellation, or abrogation, including, but not limited to, bonuses, rentals and royalties.

NOTE: The Office of Mineral Resources will require a minimum bonus of \$230 per acre and a minimum royalty of 23%.

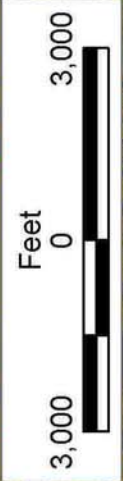
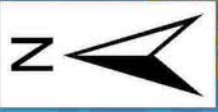
NOTE: The State of Louisiana does hereby reserve, and this lease shall be subject to, the imprescriptible right of surface use in the nature of a servitude in favor of the Department of Natural Resources, including its

Offices and Commissions, for the sole purpose of implementing, constructing, servicing and maintaining approved coastal zone management and/or restoration projects. Utilization of any and all rights derived under this lease by the mineral lessee, its agents, successors or assigns, shall not interfere with nor hinder the reasonable surface use by the Department of Natural Resources, its Offices or Commissions, as herein above reserved.

NOTE: The Department of Wildlife and Fisheries has designated certain areas in the coastal waters of the State of Louisiana as Oyster Seed Bed Areas. The exact location of those Seed Bed Areas must be obtained from the Department of Wildlife and Fisheries and any work done under a mineral lease from the State of Louisiana may necessarily be conducted in conformity with the rules and regulations promulgated by the said Department of Wildlife and Fisheries for Oyster Seed Bed Areas.

Applicant: KARE-SUE ENERGY, INC.

Bidder	Cash Payment	Price/Acre	Rental	Oil	Gas	Other



ST BERNARD PARISH

LAKE BORGNE

BILOXI WMA



T12S - R17E

SL 17770

SL 17769

SL 17810

SL 17768

T12S - R16E

P.O.B.
X = 2,555,306.00
Y = 497,162.00

SL 18065

SL 18067

TRACT 37976 - Iberia Parish, Louisiana

All of the lands now or formerly constituting the beds and bottoms of all water bodies of every nature and description the title of which vests in the State of Louisiana, together with all islands arising therein and other lands formed by accretion or by reliction, where allowed by law, excepting tax adjudicated lands, and not presently under mineral lease on December 14, 2005, situated in Iberia Parish, Louisiana, and more particularly described as follows: Beginning at a point having Coordinates of X = 1,990,700.00 and Y = 486,500.00; thence South 13,000.00 feet to a point having Coordinates of X = 1,990,700.00 and Y = 473,500.00; thence West 10,000.00 feet to a point having Coordinates of X = 1,980,700.00 and Y = 473,500.00; thence North 13,000.00 feet to a point having Coordinates of X = 1,980,700.00 and Y = 486,500.00; thence East 10,000.00 feet to the point of beginning, **LESS AND EXCEPT** all of State Lease No. 17852, as amended, that lie within the above described tract, being more fully described as follows: Beginning at a point having Coordinates of X = 1,983,179.88 and Y = 482,137.00; thence Northeasterly along an arc having a radius of 294.26 feet and a chord bearing of North 30 degrees 26 minutes 53 seconds East 365.59 feet to a point having Coordinates of X = 1,983,365.14 and Y = 482,452.17; thence Northeasterly along an arc having a radius of 516.94 feet and a chord bearing of North 87 degrees 51 minutes 50 seconds East 395.58 feet to a point having Coordinates of X = 1,983,760.45 and Y = 482,466.92; thence Southeasterly along an arc having a radius of 1,106.11 feet and a chord bearing of South 62 degrees 40 minutes 58 seconds East 293.14 feet to a point having Coordinates of X = 1,984,020.89 and Y = 482,332.39; thence Southeasterly along an arc having a radius of 1,439.80 feet and a chord bearing of South 43 degrees 08 minutes 52 seconds East approximately 259 feet to a point on the Northern boundary of Operating Agreement No. 0003; thence Westerly and Southerly on the boundary of said Operating Agreement No. 0003 to a point of intersection with an East West line having a Coordinate of Y = 482,137.00; thence West approximately 760 feet to the point of beginning; and **LESS AND EXCEPT** all of Operating Agreement No. 0003 that lie within the above described tract, being more fully described as follows: The Northwest Quarter of the Southeast Quarter (NW/4 of SE/4) of Section 30, Township 12 South, Range 11 East; The Southwest Quarter of the Southeast Quarter (SW/4 of SE/4) of Section 30, Township 12 South, Range 11 East; Beginning at a point North 516.5 feet and West 1975.6 feet from the Southeast corner of Section 30, Township 12 South, Range 11 East, said beginning point being the Southeast corner of the unit herein described; thence South 89 degrees 26 minutes 53 seconds West 1,325.44 feet to a point for the Southwest corner of the unit; thence North 01 degrees 21 minutes 52 seconds East 1,337.95 feet to a point for the Northwest corner of the unit; thence North 89 degrees 26 minutes 38 seconds East 1325.17 feet to a point for the Northeast corner of the unit; thence South 01 degrees 21 minutes 07 seconds West 1,338.05 feet to the place of beginning; containing approximately **78 acres**, all as more particularly outlined on a plat on file in the Office of Mineral Resources, Department of Natural

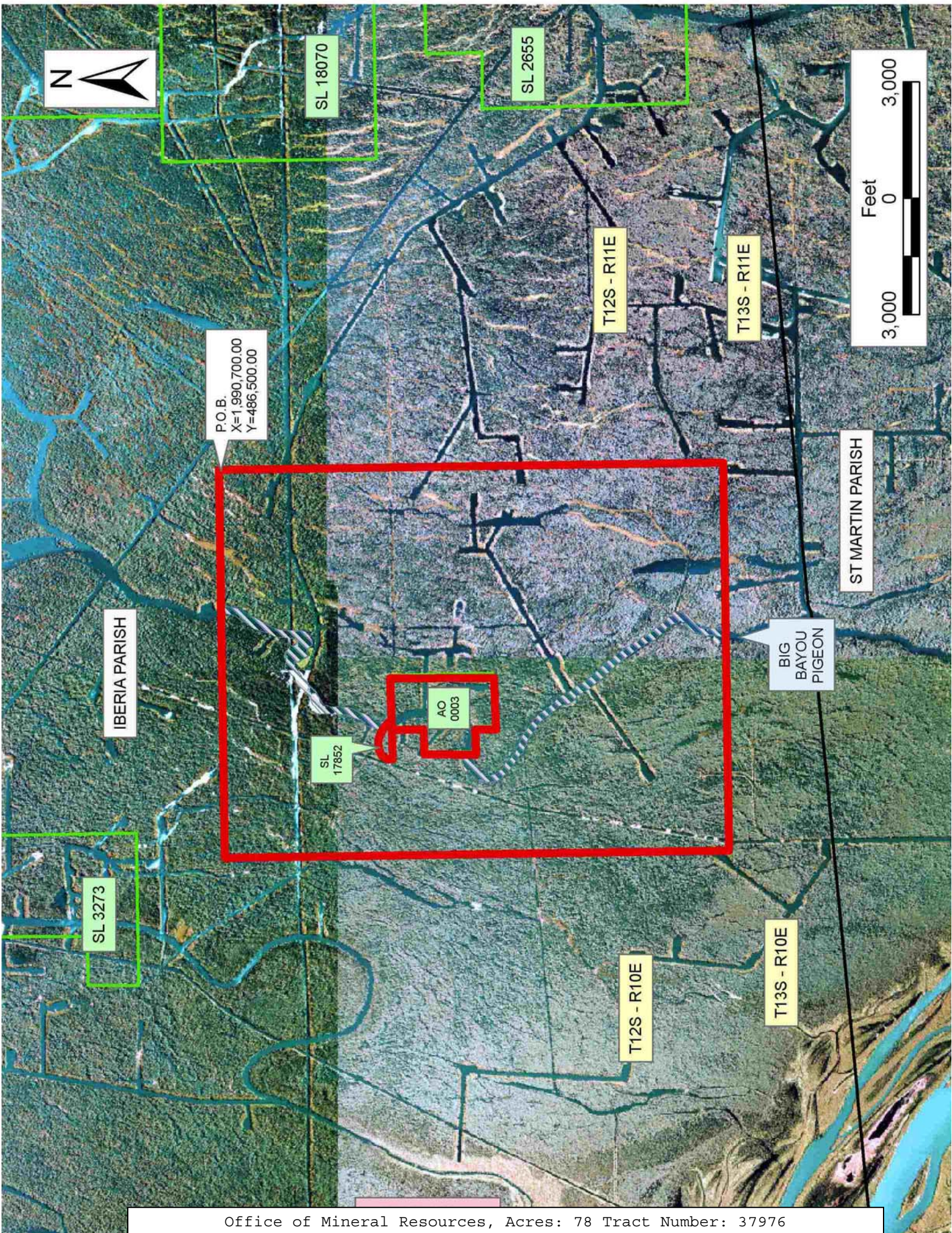
Resources. All bearings, distances and coordinates are based on Louisiana Coordinate System of 1927, (North or South Zone), where applicable.

NOTE: The above description of the Tract nominated for lease has been provided and corrected, where required, exclusively by the nomination party. Any mineral lease selected from this Tract and awarded by the Louisiana State Mineral Board shall be without warranty of any kind, either express, implied, or statutory, including, but not limited to, the implied warranties of merchantability and fitness for a particular purpose. Should the mineral lease awarded by the Louisiana State Mineral Board be subsequently modified, cancelled or abrogated due to the existence of conflicting leases, operating agreements, private claims or other future obligations or conditions which may affect all or any portion of the leased Tract, it shall not relieve the Lessee of the obligation to pay any bonus due thereon to the Louisiana State Mineral Board, nor shall the Louisiana State Mineral Board be obligated to refund any consideration paid by the Lessor prior to such modification, cancellation, or abrogation, including, but not limited to, bonuses, rentals and royalties.

NOTE: The State of Louisiana does hereby reserve, and this lease shall be subject to, the imprescriptible right of surface use in the nature of a servitude in favor of the Department of Natural Resources, including its Offices and Commissions, for the sole purpose of implementing, constructing, servicing and maintaining approved coastal zone management and/or restoration projects. Utilization of any and all rights derived under this lease by the mineral lessee, its agents, successors or assigns, shall not interfere with nor hinder the reasonable surface use by the Department of Natural Resources, its Offices or Commissions, as herein above reserved.

Applicant: EL SEAJAY RESOURCES

Bidder	Cash Payment	Price/Acre	Rental	Oil	Gas	Other



SL 18070

SL 2655

T12S - R11E

T13S - R11E

P.O.B.
X=1,990,700.00
Y=486,500.00



IBERIA PARISH

ST MARTIN PARISH

BIG BAYOU PIGEON

SL 17852

AC 0003

T12S - R10E

T13S - R10E

SL 3273



TRACT 37977 - Cameron Parish, Louisiana

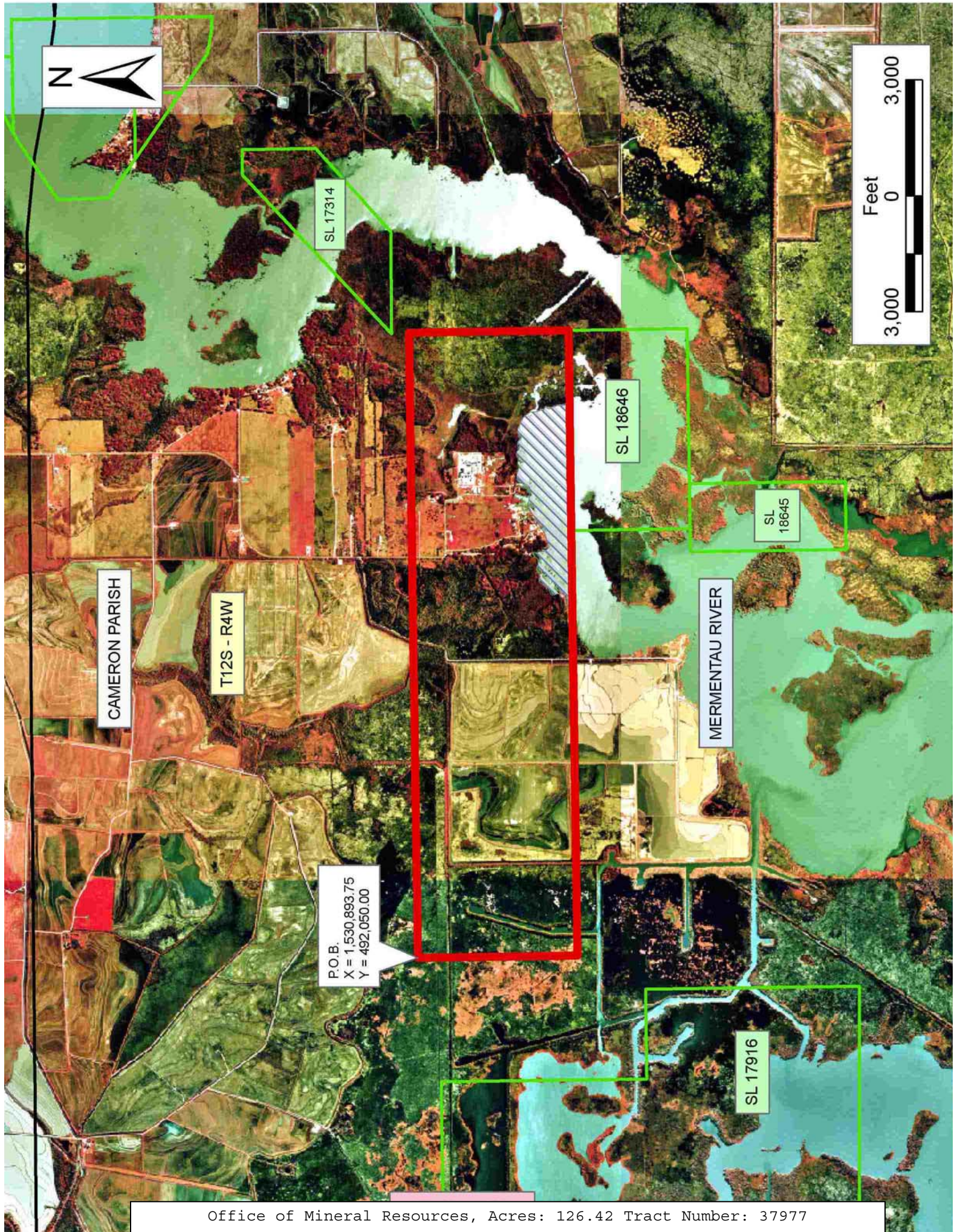
All of the lands now or formerly constituting the beds and bottoms of all water bodies of every nature and description the title of which vests in the State of Louisiana, together with all islands arising therein and other lands formed by accretion or by reliction, where allowed by law, excepting tax adjudicated lands, and not presently under mineral lease on December 14, 2005, situated in Cameron Parish, Louisiana, and more particularly described as follows: Beginning at a point having Coordinates of X = 1,530,893.75 and Y = 492,050.00; thence East 16,163.51 feet to a point having Coordinates of X = 1,547,057.26 and Y = 492,050.00; thence South 4,123.23 feet to the Northeast corner of State Lease No. 18646 having Coordinates of X = 1,547,057.26 and Y = 487,926.77; thence West 5,170.13 feet along the North boundary of said State Lease No. 18646 to its Northwest corner having Coordinates of X = 1,541,887.13 and Y = 487,926.77; thence West 10,993.38 feet to a point having Coordinates of X = 1,530,893.75 and Y = 487,926.77; thence North 4,123.23 feet to the point of beginning, **LESS AND EXCEPT** all those portions of State Lease No. 17314, as amended, that may lie within the above described tract, containing approximately **126.42 acres**, all as more particularly outlined on a plat on file in the Office of Mineral Resources, Department of Natural Resources. All bearings, distances and coordinates are based on Louisiana Coordinate System of 1927, (North or South Zone), where applicable.

NOTE: The above description of the Tract nominated for lease has been provided and corrected, where required, exclusively by the nomination party. Any mineral lease selected from this Tract and awarded by the Louisiana State Mineral Board shall be without warranty of any kind, either express, implied, or statutory, including, but not limited to, the implied warranties of merchantability and fitness for a particular purpose. Should the mineral lease awarded by the Louisiana State Mineral Board be subsequently modified, cancelled or abrogated due to the existence of conflicting leases, operating agreements, private claims or other future obligations or conditions which may affect all or any portion of the leased Tract, it shall not relieve the Lessee of the obligation to pay any bonus due thereon to the Louisiana State Mineral Board, nor shall the Louisiana State Mineral Board be obligated to refund any consideration paid by the Lessor prior to such modification, cancellation, or abrogation, including, but not limited to, bonuses, rentals and royalties.

NOTE: The State of Louisiana does hereby reserve, and this lease shall be subject to, the imprescriptible right of surface use in the nature of a servitude in favor of the Department of Natural Resources, including its Offices and Commissions, for the sole purpose of implementing, constructing, servicing and maintaining approved coastal zone management and/or restoration projects. Utilization of any and all rights derived under this lease by the mineral lessee, its agents, successors or assigns, shall not interfere with nor hinder the reasonable surface use by the Department of Natural Resources, its Offices or Commissions, as herein above reserved.

Applicant: LEE SONNIER III

Bidder	Cash Payment	Price/Acre	Rental	Oil	Gas	Other



CAMERON PARISH

T12S - R4W

MERMENTAU RIVER

SL 17314

SL 18646

SL 18645

SL 17916

P.O.B.
X = 1,530,893.75
Y = 492,050.00