

**TRACT 36985 - Webster Parish, Louisiana**

A certain Tract of land, excluding the beds and bottoms of all navigable waters, belonging to and not presently under mineral lease from Louisiana Department Of Transportation And Development on December 8, 2004, being more fully described as follows: Beginning at a point having Coordinates of X = 1,704,500.00 and Y = 832,300.00; Thence East 5,500.00 feet to a point having Coordinates of X = 1,710,000.00 and Y = 832,300.00; Thence South 5,375.00 feet to a point having Coordinates of X = 1,710,000.00 and Y = 826,925.00; Thence West 5,500.00 feet to a point having Coordinates of X = 1,704,500.00 and Y = 826,925.00; Thence North 5,375.00 feet to the point of beginning, containing approximately **18 acres**, all as more particularly outlined on a plat on file in the Office of Mineral Resources, Department of Natural Resources. The description is based on information provided by the State Agency regarding location and ownership of surface and mineral rights. All bearings, distances and coordinates, if applicable, are based on Louisiana Coordinate System of 1927, (North or South Zone).

NOTE: The above description of the Tract nominated for lease has been provided and corrected, where required, exclusively by the nomination party. Any mineral lease selected from this Tract and awarded by the Louisiana State Mineral Board shall be without warranty of any kind, either express, implied, or statutory, including, but not limited to, the implied warranties of merchantability and fitness for a particular purpose. Should the mineral lease awarded by the Louisiana State Mineral Board be subsequently modified, cancelled or abrogated due to the existence of conflicting leases, operating agreements, private claims or other future obligations or conditions which may affect all or any portion of the leased Tract, it shall not relieve the Lessee of the obligation to pay any bonus due thereon to the Louisiana State Mineral Board, nor shall the Louisiana State Mineral Board be obligated to refund any consideration paid by the Lessor prior to such modification, cancellation, or abrogation, including, but not limited to, bonuses, rentals and royalties.

Applicant: Atlanta Exploration Company to Agency and by Resolution from the Louisiana Department Of Transportation And Development authorizing the Mineral Board to act in its behalf

Bidder	Cash Payment	Price/Acre	Rental	Oil	Gas	Other



T23N - R10W

T22N - R10W

WEBSTER PARISH

SEC 36

T22N - R11W

T23N - R11W

P.O.B.  
X=1,704,500.00  
Y=832,300.00

BOSSIER PARISH

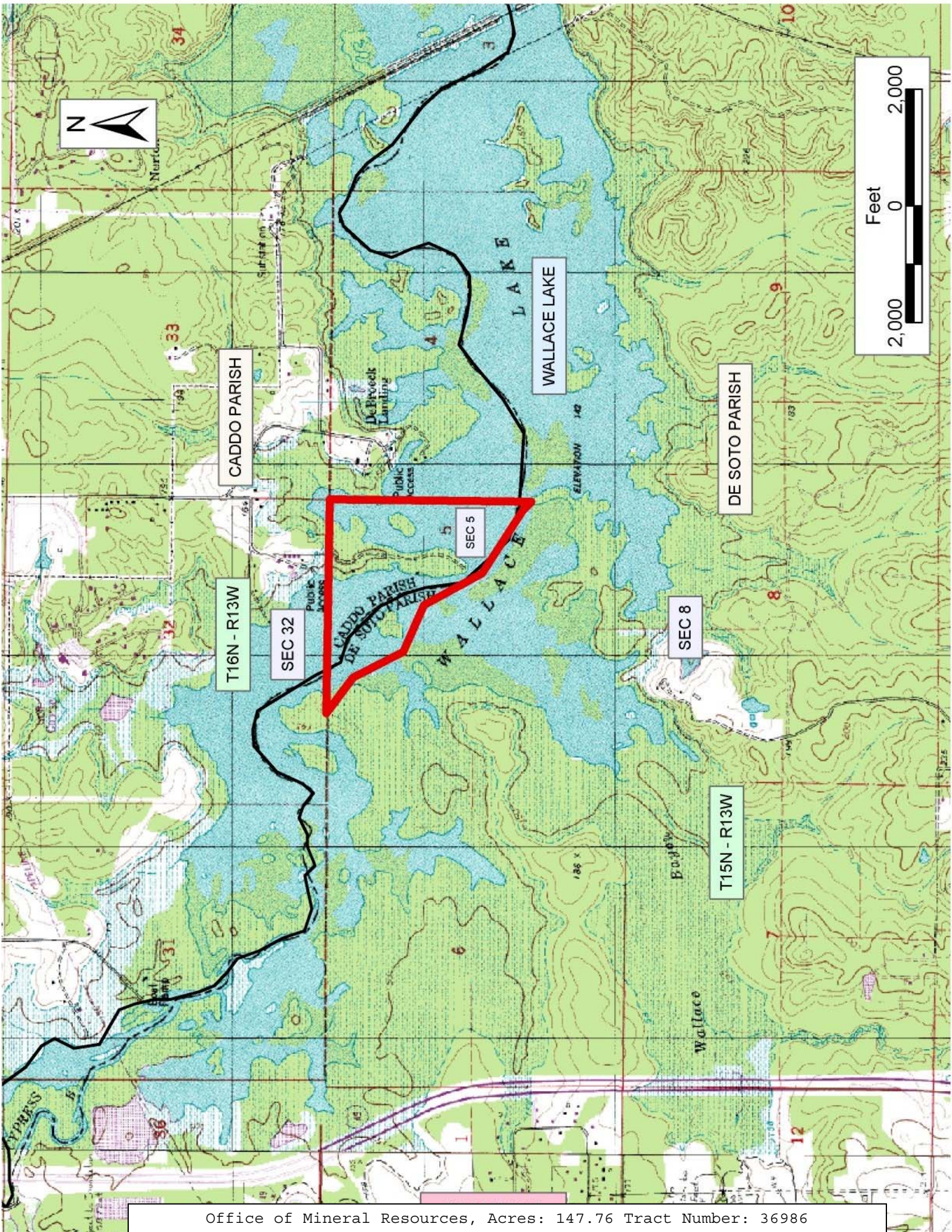
**TRACT 36986 - Caddo Parish, Louisiana**

A certain Tract of land, excluding the beds and bottoms of all navigable waters, belonging to and not presently under mineral lease from Caddo Levee District on December 8, 2004, being more fully described as follows: All of fractional Section 5, Township 15 North, Range 13 West, Caddo Parish Louisiana, containing approximately **147.76 acres**, all as more particularly outlined on a plat on file in the Office of Mineral Resources, Department of Natural Resources. The description is based on information provided by the State Agency regarding location and ownership of surface and mineral rights. All bearings, distances and coordinates, if applicable, are based on Louisiana Coordinate System of 1927, (North or South Zone).

NOTE: The above description of the Tract nominated for lease has been provided and corrected, where required, exclusively by the nomination party. Any mineral lease selected from this Tract and awarded by the Louisiana State Mineral Board shall be without warranty of any kind, either express, implied, or statutory, including, but not limited to, the implied warranties of merchantability and fitness for a particular purpose. Should the mineral lease awarded by the Louisiana State Mineral Board be subsequently modified, cancelled or abrogated due to the existence of conflicting leases, operating agreements, private claims or other future obligations or conditions which may affect all or any portion of the leased Tract, it shall not relieve the Lessee of the obligation to pay any bonus due thereon to the Louisiana State Mineral Board, nor shall the Louisiana State Mineral Board be obligated to refund any consideration paid by the Lessor prior to such modification, cancellation, or abrogation, including, but not limited to, bonuses, rentals and royalties.

Applicant: Coastal Land Services, Inc. to Agency and by Resolution from the Caddo Levee District authorizing the Mineral Board to act in its behalf

Bidder	Cash Payment	Price/Acre	Rental	Oil	Gas	Other



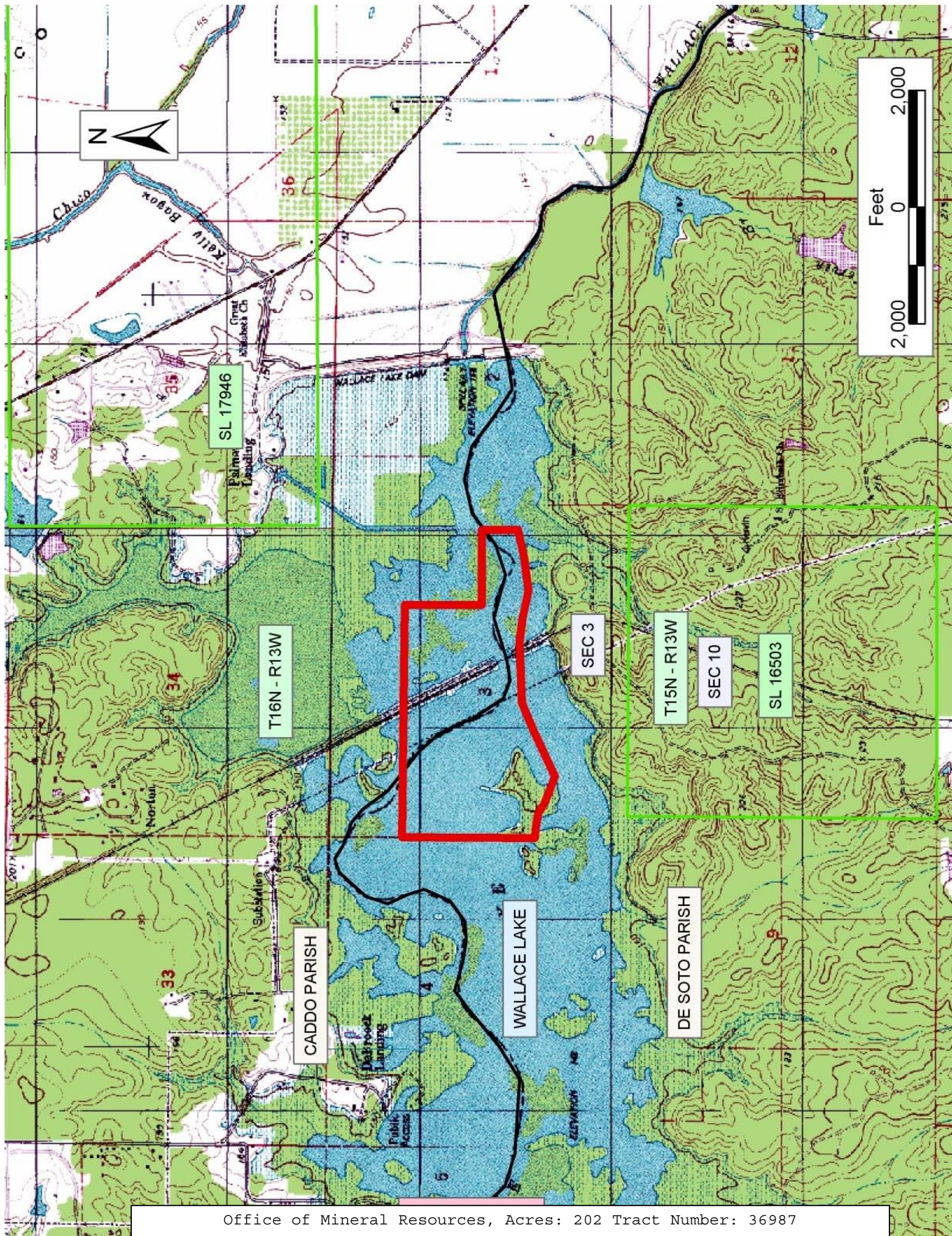
**TRACT 36987 - Caddo and De Soto Parishes, Louisiana**

A certain Tract of land, excluding the beds and bottoms of all navigable waters, belonging to and not presently under mineral lease from Caddo Levee District on December 8, 2004, being more fully described as follows: Lots 1, 2, 3 and 4 of Section 3; the Southwest Quarter of the Northeast Quarter (SW/4 of NE/4) and the South half of the Northwest Quarter (S/2 of NW/4) of Section 3, Township 15 North, Range 13 West, Caddo Parish Louisiana, containing approximately **202 acres**, all as more particularly outlined on a plat on file in the Office of Mineral Resources, Department of Natural Resources. The description is based on information provided by the State Agency regarding location and ownership of surface and mineral rights. All bearings, distances and coordinates, if applicable, are based on Louisiana Coordinate System of 1927, (North or South Zone).

NOTE: The above description of the Tract nominated for lease has been provided and corrected, where required, exclusively by the nomination party. Any mineral lease selected from this Tract and awarded by the Louisiana State Mineral Board shall be without warranty of any kind, either express, implied, or statutory, including, but not limited to, the implied warranties of merchantability and fitness for a particular purpose. Should the mineral lease awarded by the Louisiana State Mineral Board be subsequently modified, cancelled or abrogated due to the existence of conflicting leases, operating agreements, private claims or other future obligations or conditions which may affect all or any portion of the leased Tract, it shall not relieve the Lessee of the obligation to pay any bonus due thereon to the Louisiana State Mineral Board, nor shall the Louisiana State Mineral Board be obligated to refund any consideration paid by the Lessor prior to such modification, cancellation, or abrogation, including, but not limited to, bonuses, rentals and royalties.

Applicant: Coastal Land Servies, Inc. to Agency and by Resolution from the Caddo Levee District authorizing the Mineral Board to act in its behalf

Bidder	Cash Payment	Price/Acre	Rental	Oil	Gas	Other



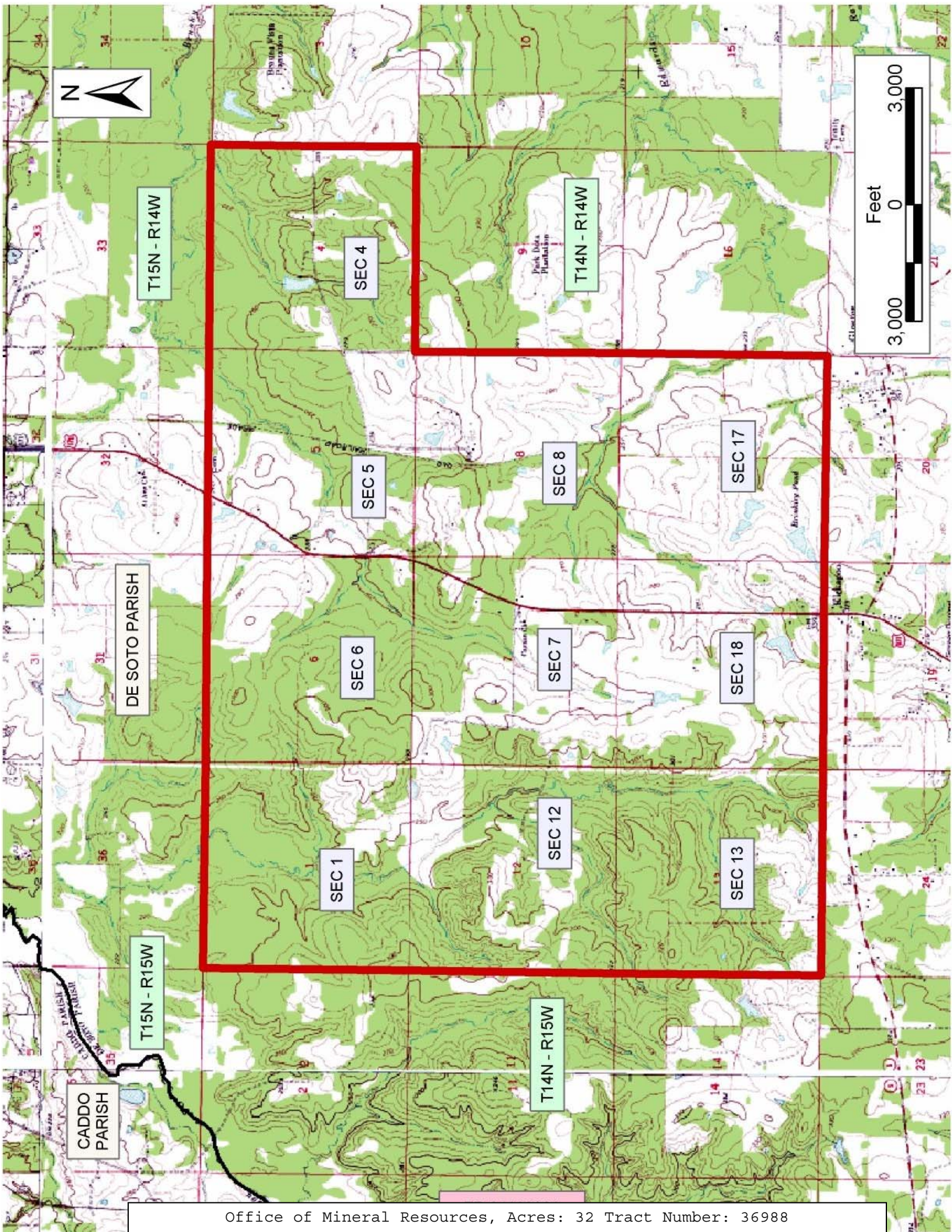
**TRACT 36988 - De Soto Parish, Louisiana**

A certain Tract of land, excluding the beds and bottoms of all navigable waters, belonging to and not presently under mineral lease from Desoto Parish Police Jury on December 8, 2004, being more fully described as follows: All of the mineral right, title and interest in and to certain parcels of land consisting of roads, streets, or any other lands belonging to the DeSoto Parish Police Jury situated within Sections 4, 5, 6, 7, 8, 17 and 18, Township 14 North, Range 14 West and Sections 1, 12 and 13, Township 14 North, Range 15 West, DeSoto Parish, Louisiana; **LESS AND EXCEPT** any portion of State Agency Lease No. 18084 that falls within this tract, containing approximately **32.00 acres**, all as more particularly outlined on a plat on file in the Office of Mineral Resources, Department of Natural Resources. The description is based on information provided by the State Agency regarding location and ownership of surface and mineral rights. All bearings, distances and coordinates, if applicable, are based on Louisiana Coordinate System of 1927, (North or South Zone).

NOTE: The above description of the Tract nominated for lease has been provided and corrected, where required, exclusively by the nomination party. Any mineral lease selected from this Tract and awarded by the Louisiana State Mineral Board shall be without warranty of any kind, either express, implied, or statutory, including, but not limited to, the implied warranties of merchantability and fitness for a particular purpose. Should the mineral lease awarded by the Louisiana State Mineral Board be subsequently modified, cancelled or abrogated due to the existence of conflicting leases, operating agreements, private claims or other future obligations or conditions which may affect all or any portion of the leased Tract, it shall not relieve the Lessee of the obligation to pay any bonus due thereon to the Louisiana State Mineral Board, nor shall the Louisiana State Mineral Board be obligated to refund any consideration paid by the Lessor prior to such modification, cancellation, or abrogation, including, but not limited to, bonuses, rentals and royalties.

Applicant: Coastal Land Services, Inc. to Agency and by Resolution from the Desoto Parish Police Jury authorizing the Mineral Board to act in its behalf

Bidder	Cash Payment	Price/Acre	Rental	Oil	Gas	Other





**TRACT 36989 - St. Charles Parish, Louisiana**

A certain Tract of land, excluding the beds and bottoms of all navigable waters, belonging to and not presently under mineral lease from St. Charles Parish Council on December 8, 2004, being more fully described as follows: Beginning at a point having Coordinates of X = 2,312,503.05 and Y = 469,000.00; Thence East 2,697.20 feet to a point having Coordinates of X = 2,315,200.25 and Y = 469,000.00; Thence South 08 degrees 01 minutes 31 seconds East 4,544.51 feet to a point having Coordinates of X = 2,315,834.71 and Y = 464,500.00; Thence West 4,390.48 feet to a point having Coordinates of X = 2,311,444.23 and Y = 464,500.00; Thence North 13 degrees 14 minutes 26 seconds East 4,622.89 feet to the point of beginning, as shown outlined in red on the attached plat, **LESS AND EXCEPT**, 1.878 acres located within the 10,600 feet RB SUA, created by Conservation Order No. 977 East 1, more fully described as follows: Beginning at a point having Coordinates of X = 2,314,854.66 and Y = 468,168.33; Thence South 29 degrees 35 minutes 04 seconds West 3,873.38 feet to a point having Coordinates of X = 2,312,942.35 and Y = 464,799.93; Thence North 35 degrees 21 minutes 46 seconds West 497.02 feet to a point having Coordinates of X = 2,312,654.70 and Y = 465,205.25; Thence North 22 degrees 43 minutes 48 seconds West 492.98 feet to a point having Coordinates of X = 2,312,464.22 and Y = 465,659.94; Thence North 02 degrees 42 minutes 17 seconds West 491.66 feet to a point having Coordinates of X = 2,312,441.02 and Y = 466,151.05; Thence North 06 degrees 07 minutes 58 seconds East 378.35 feet to a point having Coordinates of X = 2,312,481.44 and Y = 466,527.23; Thence North 08 degrees 54 minutes 39 seconds East 389.16 feet to a point having Coordinates of X = 2,312,541.72 and Y = 466,911.69; Thence North 63 degrees 29 minutes 06 seconds East 516.41 feet to a point having Coordinates of X = 2,313,003.81 and Y = 467,142.23; Thence North 56 degrees 43 minutes 47 seconds East 402.32 feet to a point having Coordinates of X = 2,313,340.19 and Y = 467,362.94; Thence North 58 degrees 19 minutes 06 seconds East 791.02 feet to a point having Coordinates of X = 2,314,013.33 and Y = 467,778.38; Thence North 61 degrees 43 minutes 28 seconds East 294.84 feet to a point having Coordinates of X = 2,314,272.99 and Y = 467,918.05; Thence North 62 degrees 06 minutes 04 seconds East 311.79 feet to a point having Coordinates of X = 2,314,548.54 and Y = 468,063.94; Thence North 71 degrees 10 minutes 12 seconds East 323.43 feet to the point of beginning, containing approximately **14 acres**, all as more particularly outlined on a plat on file in the Office of Mineral Resources, Department of Natural Resources. The description is based on information provided by the State Agency regarding location and ownership of surface and mineral rights. All bearings, distances and coordinates, if applicable, are based on Louisiana Coordinate System of 1927, (North or South Zone).

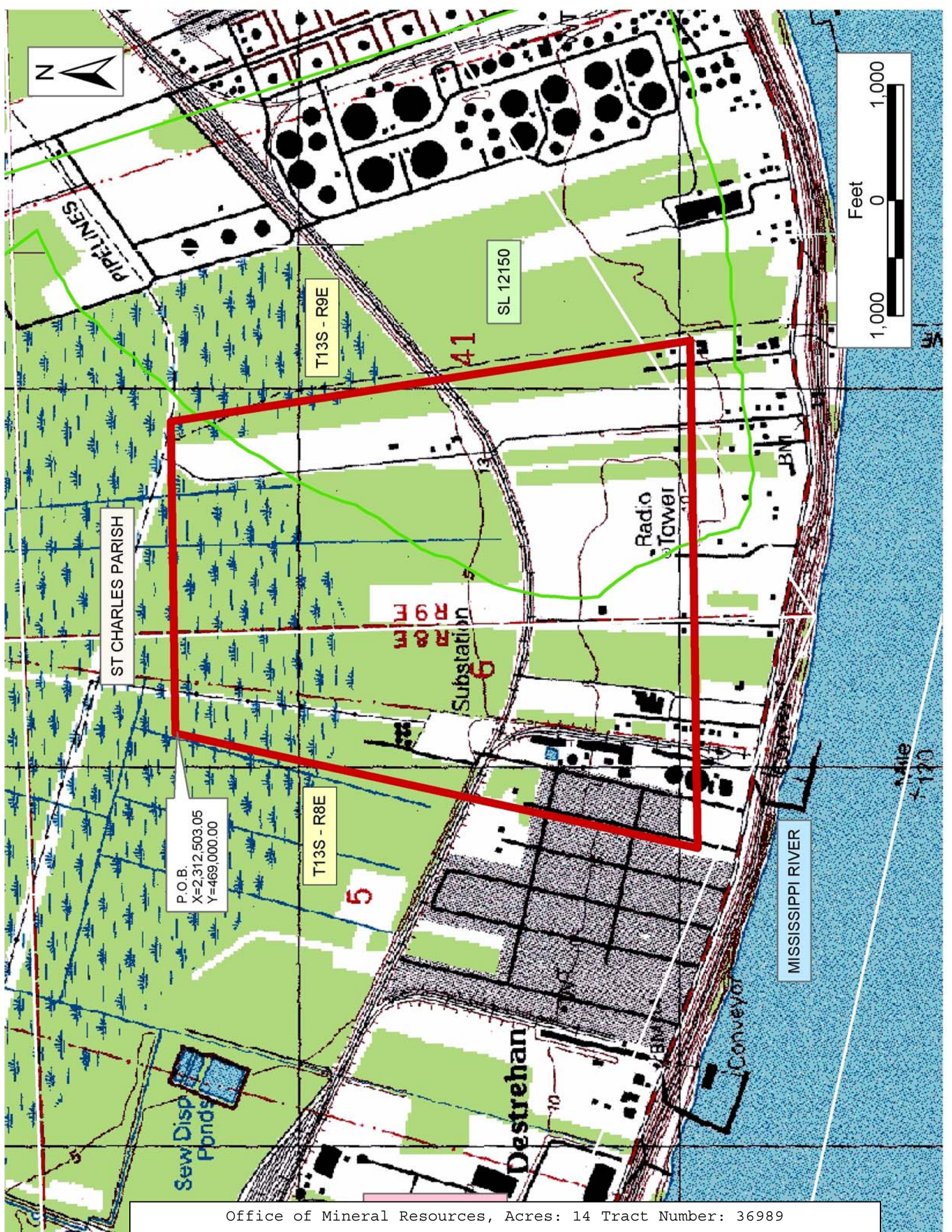
NOTE: The above description of the Tract nominated for lease has been provided and corrected, where required, exclusively by the nomination party. Any mineral lease selected from this Tract and awarded by the Louisiana State Mineral Board shall be without warranty of any kind,

either express, implied, or statutory, including, but not limited to, the implied warranties of merchantability and fitness for a particular purpose. Should the mineral lease awarded by the Louisiana State Mineral Board be subsequently modified, cancelled or abrogated due to the existence of conflicting leases, operating agreements, private claims or other future obligations or conditions which may affect all or any portion of the leased Tract, it shall not relieve the Lessee of the obligation to pay any bonus due thereon to the Louisiana State Mineral Board, nor shall the Louisiana State Mineral Board be obligated to refund any consideration paid by the Lessor prior to such modification, cancellation, or abrogation, including, but not limited to, bonuses, rentals and royalties.

NOTE: The State of Louisiana does hereby reserve, and this lease shall be subject to, the imprescriptible right of surface use in the nature of a servitude in favor of the Department of Natural Resources, including its Offices and Commissions, for the sole purpose of implementing, constructing, servicing and maintaining approved coastal zone management and/or restoration projects. Utilization of any and all rights derived under this lease by the mineral lessee, its agents, successors or assigns, shall not interfere with nor hinder the reasonable surface use by the Department of Natural Resources, its Offices or Commissions, as herein above reserved.

Applicant: Larry S. Minter, Inc. to Agency and by Resolution from the St. Charles Parish Council authorizing the Mineral Board to act in its behalf

Bidder	Cash Payment	Price/Acre	Rental	Oil	Gas	Other



P.O.B.  
X=2,312,503.05  
Y=469,000.00

ST CHARLES PARISH

T13S - R8E

T13S - R9E

SL 12150

Substation 6

Radio Tower

MISSISSIPPI RIVER

Destrehan

Conveyor

