

**TRACT 36942 - Caddo Parish, Louisiana**

All of the lands now or formerly constituting the beds and bottoms of all water bodies of every nature and description the title of which vests in the State of Louisiana, together with all islands arising therein and other lands formed by accretion or by reliction, where allowed by law, excepting tax adjudicated lands, and not presently under mineral lease on December 8, 2004, situated in Caddo Parish, Louisiana, and more particularly described as follows: Beginning at a point having Coordinates of X = 1,672,576.23 and Y = 594,109.56; thence Westerly approximately 5,257 feet to the Southeast corner of State Lease No. 6037; thence Northerly approximately 5,284 feet on the East line of State Lease No. 6037 to its Northeast corner and a point on the South line of State Lease No. 16438; thence Easterly approximately 508 feet on the South line of State Lease No. 16438 to its Southeast corner and the Southwest corner of State Lease No. 6856; thence Easterly approximately 4,795 feet on the South line of State Lease No. 6856 to the point of intersection with a line having a bearing of North 00 degrees 47 minutes 39 seconds East commencing at a point having Coordinates of X = 1,672,576.23 and Y = 594,109.56; thence South 00 degrees 47 minutes 39 seconds West approximately 5,262 feet to the point of beginning, **LESS AND EXCEPT** all that portion, if any, of State Lease No. 6037, State Lease No. 16438, and State Lease No. 6856, that may lie within the above described tract, containing approximately **4 acres**, all as more particularly outlined on a plat on file in the Office of Mineral Resources, Department of Natural Resources. All bearings, distances and coordinates are based on Louisiana Coordinate System of 1927, (North or South Zone), where applicable.

NOTE: The above description of the Tract nominated for lease has been provided and corrected, where required, exclusively by the nomination party. Any mineral lease selected from this Tract and awarded by the Louisiana State Mineral Board shall be without warranty of any kind, either express, implied, or statutory, including, but not limited to, the implied warranties of merchantability and fitness for a particular purpose. Should the mineral lease awarded by the Louisiana State Mineral Board be subsequently modified, cancelled or abrogated due to the existence of conflicting leases, operating agreements, private claims or other future obligations or conditions which may affect all or any portion of the leased Tract, it shall not relieve the Lessee of the obligation to pay any bonus due thereon to the Louisiana State Mineral Board, nor shall the Louisiana State Mineral Board be obligated to refund any consideration paid by the Lessor prior to such modification, cancellation, or abrogation, including, but not limited to, bonuses, rentals and royalties.

Bidder	Cash Payment	Price/Acre	Rental	Oil	Gas	Other


Applicant: Morganza Resources



RED RIVER

P.O.B.  
X=1,672,576.23  
Y=594,109.56



SL 6856

SL 16438

CADDO PARISH

T15N - R12W

SL 6037

PRAIRIE RIVER



**TRACT 36943 - Ouachita Parish, Louisiana**

All of the lands now or formerly constituting the beds and bottoms of all water bodies of every nature and description the title of which vests in the State of Louisiana, together with all islands arising therein and other lands formed by accretion or by reliction, where allowed by law, excepting tax adjudicated lands, and not presently under mineral lease on December 8, 2004, situated in Ouachita Parish, Louisiana, and more particularly described as follows: Beginning at a point having Coordinates of X = 2,095,120.00 and Y = 585,900.00; thence North 10,560.00 feet to a point having Coordinates of X = 2,095,120.00 and Y = 596,460.00; thence East 16,080.00 feet to a point having Coordinates of X = 2,111,200.00 and Y = 596,460.00; thence South 10,560.00 feet to the Northeast corner of State Lease No. 17865 having Coordinates of X = 2,111,200.00 and Y = 585,900.00; thence West 10,800.00 feet on the North line of said State Lease No. 17865 to its Northwest corner having Coordinates of X = 2,100,400.00 and Y = 585,900.00; thence West 5,280.00 feet to the point of beginning, containing approximately **322 acres**, all as more particularly outlined on a plat on file in the Office of Mineral Resources, Department of Natural Resources. All bearings, distances and coordinates are based on Louisiana Coordinate System of 1927, (North or South Zone), where applicable.

NOTE: The above description of the Tract nominated for lease has been provided and corrected, where required, exclusively by the nomination party. Any mineral lease selected from this Tract and awarded by the Louisiana State Mineral Board shall be without warranty of any kind, either express, implied, or statutory, including, but not limited to, the implied warranties of merchantability and fitness for a particular purpose. Should the mineral lease awarded by the Louisiana State Mineral Board be subsequently modified, cancelled or abrogated due to the existence of conflicting leases, operating agreements, private claims or other future obligations or conditions which may affect all or any portion of the leased Tract, it shall not relieve the Lessee of the obligation to pay any bonus due thereon to the Louisiana State Mineral Board, nor shall the Louisiana State Mineral Board be obligated to refund any consideration paid by the Lessor prior to such modification, cancellation, or abrogation, including, but not limited to, bonuses, rentals and royalties.

Bidder	Cash Payment	Price/Acre	Rental	Oil	Gas	Other

Applicant: Bradley Broussard Land Service



OUACHITA RIVER



T15N - R3E



SL 17865

P.O.B.  
X=2,095,120.00  
Y=585,900.00

OUACHITA PARISH

CALDWELL PARISH

**TRACT 36944 - Caddo Parish, Louisiana**

All of the lands now or formerly constituting the beds and bottoms of all water bodies of every nature and description the title of which vests in the State of Louisiana, together with all islands arising therein and other lands formed by accretion or by reliction, where allowed by law, excepting tax adjudicated lands, and not presently under mineral lease on December 8, 2004, situated in Caddo Parish, Louisiana, and more particularly described as follows: Beginning at a point having Coordinates of X = 1,672,576.23 and Y = 594,109.56; thence South 00 degrees 55 minutes 41 seconds West 5,210.24 feet to a point on the North line of State Lease No. 17947 having Coordinates of X = 1,672,491.84 and Y = 588,900.00; thence West 391.84 feet on the North line of said State Lease No. 17947 to its Northwest corner having Coordinates of X = 1,672,100.00 and Y = 588,900.00; thence South 89 degrees 20 minutes 49 seconds West 4,796.04 feet to a point having Coordinates of X = 1,667,304.27 and Y = 588,845.34; thence Northerly approximately 5,325 feet to the Southeast corner of State Lease No. 6037, as amended; thence Easterly approximately 5,257 feet to the point of beginning, containing approximately **13 acres**, all as more particularly outlined on a plat on file in the Office of Mineral Resources, Department of Natural Resources. All bearings, distances and coordinates are based on Louisiana Coordinate System of 1927, (North or South Zone), where applicable.

NOTE: The above description of the Tract nominated for lease has been provided and corrected, where required, exclusively by the nomination party. Any mineral lease selected from this Tract and awarded by the Louisiana State Mineral Board shall be without warranty of any kind, either express, implied, or statutory, including, but not limited to, the implied warranties of merchantability and fitness for a particular purpose. Should the mineral lease awarded by the Louisiana State Mineral Board be subsequently modified, cancelled or abrogated due to the existence of conflicting leases, operating agreements, private claims or other future obligations or conditions which may affect all or any portion of the leased Tract, it shall not relieve the Lessee of the obligation to pay any bonus due thereon to the Louisiana State Mineral Board, nor shall the Louisiana State Mineral Board be obligated to refund any consideration paid by the Lessor prior to such modification, cancellation, or abrogation, including, but not limited to, bonuses, rentals and royalties.

Applicant: Morganza Resources

Bidder	Cash Payment	Price/Acre	Rental	Oil	Gas	Other





P.O.B.  
X=1,672,576.23  
Y=594,109.56



PRAIRIE RIVER

SL 17947

SL 6037

CADDO PARISH

T15N - R12W



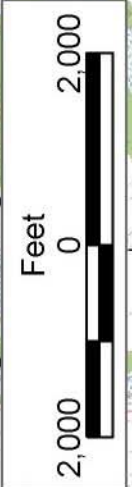
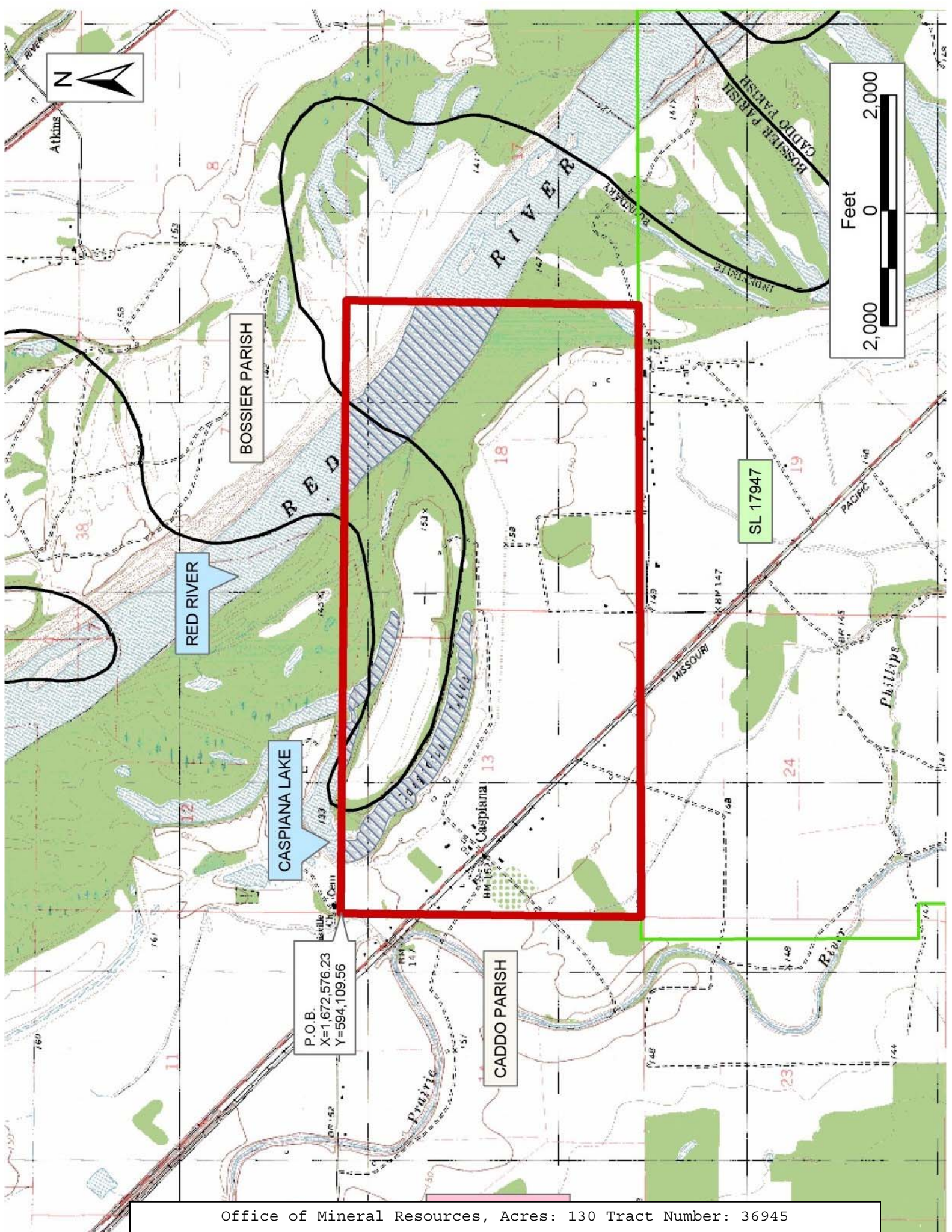
**TRACT 36945 - Bossier and Caddo Parishes, Louisiana**

All of the lands now or formerly constituting the beds and bottoms of all water bodies of every nature and description the title of which vests in the State of Louisiana, together with all islands arising therein and other lands formed by accretion or by reliction, where allowed by law, excepting tax adjudicated lands, and not presently under mineral lease on December 8, 2004, situated in Bossier and Caddo Parishes, Louisiana, and more particularly described as follows: Beginning at a point having Coordinates of X = 1,672,576.23 and Y = 594,109.56; thence South 89 degrees 12 minutes 22 seconds East 10,619.77 feet to a point having Coordinates of X = 1,683,194.98 and Y = 593,962.39; thence South 01 degrees 10 minutes 21 seconds West 5,063.45 feet to a point on the North line of State Lease No. 17947 having Coordinates of X = 1,683,091.37 and Y = 588,900.00; thence West 10,599.53 feet on the North line of said State Lease No. 17947 to a point having Coordinates of X = 1,672,491.84 and Y = 588,900.00; thence North 00 degrees 55 minutes 41 seconds East 5,210.24 feet to the point of beginning, containing approximately **130 acres**, all as more particularly outlined on a plat on file in the Office of Mineral Resources, Department of Natural Resources. All bearings, distances and coordinates are based on Louisiana Coordinate System of 1927, (North or South Zone), where applicable.

NOTE: The above description of the Tract nominated for lease has been provided and corrected, where required, exclusively by the nomination party. Any mineral lease selected from this Tract and awarded by the Louisiana State Mineral Board shall be without warranty of any kind, either express, implied, or statutory, including, but not limited to, the implied warranties of merchantability and fitness for a particular purpose. Should the mineral lease awarded by the Louisiana State Mineral Board be subsequently modified, cancelled or abrogated due to the existence of conflicting leases, operating agreements, private claims or other future obligations or conditions which may affect all or any portion of the leased Tract, it shall not relieve the Lessee of the obligation to pay any bonus due thereon to the Louisiana State Mineral Board, nor shall the Louisiana State Mineral Board be obligated to refund any consideration paid by the Lessor prior to such modification, cancellation, or abrogation, including, but not limited to, bonuses, rentals and royalties.

Bidder	Cash Payment	Price/Acre	Rental	Oil	Gas	Other

Applicant: Morganza Resources



BOSSIER PARISH

RED RIVER

CASPIANA LAKE

P.O.B.  
X=1,672,576.23  
Y=594,109.56

CADDO PARISH

SL 17947

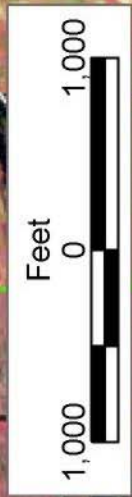
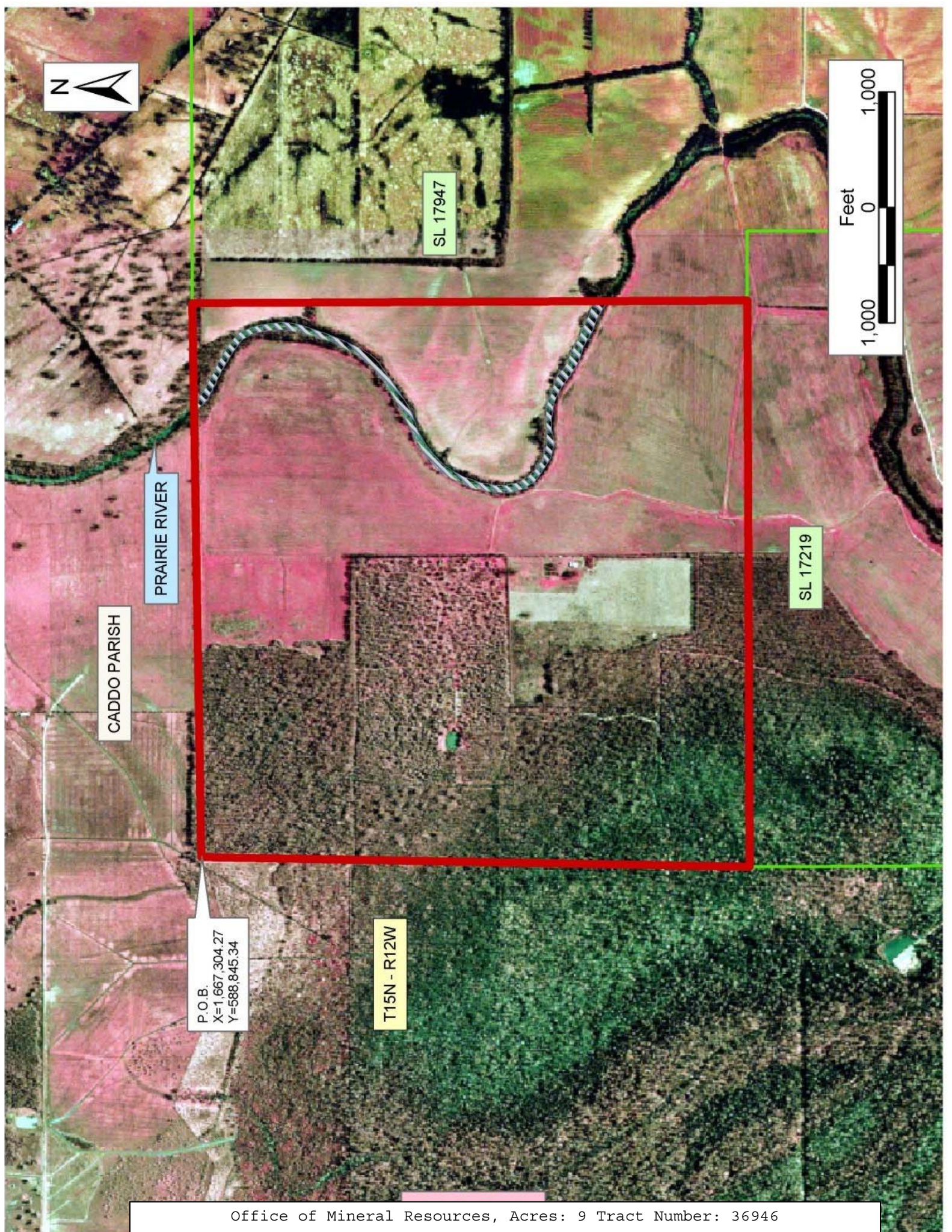
**TRACT 36946 - Caddo Parish, Louisiana**

All of the lands now or formerly constituting the beds and bottoms of all water bodies of every nature and description the title of which vests in the State of Louisiana, together with all islands arising therein and other lands formed by accretion or by reliction, where allowed by law, excepting tax adjudicated lands, and not presently under mineral lease on December 8, 2004, situated in Caddo Parish, Louisiana, and more particularly described as follows: Beginning at a point having Coordinates of X = 1,667,304.27 and Y = 588,845.34; thence North 89 degrees 20 minutes 49 seconds East 4,796.04 feet to the Northwest corner of State Lease No. 17947 having Coordinates of X = 1,672,100.00 and Y = 588,900.00; thence South 4,800.00 feet on the West line of said State Lease No. 17947 to its most Northerly Southwest corner, and a point on the boundary of State Lease No. 17219 having Coordinates of X = 1,672,100.00 and Y = 584,100.00; thence West 4,900.00 feet on the boundary of said State Lease No. 17219 to its most Northerly Northwest corner having Coordinates of X = 1,667,200.00 and Y = 584,100.00; thence North 01 degrees 15 minutes 32 seconds East 4,746.48 feet to the point of beginning, containing approximately **9 acres**, all as more particularly outlined on a plat on file in the Office of Mineral Resources, Department of Natural Resources. All bearings, distances and coordinates are based on Louisiana Coordinate System of 1927, (North or South Zone), where applicable.

NOTE: The above description of the Tract nominated for lease has been provided and corrected, where required, exclusively by the nomination party. Any mineral lease selected from this Tract and awarded by the Louisiana State Mineral Board shall be without warranty of any kind, either express, implied, or statutory, including, but not limited to, the implied warranties of merchantability and fitness for a particular purpose. Should the mineral lease awarded by the Louisiana State Mineral Board be subsequently modified, cancelled or abrogated due to the existence of conflicting leases, operating agreements, private claims or other future obligations or conditions which may affect all or any portion of the leased Tract, it shall not relieve the Lessee of the obligation to pay any bonus due thereon to the Louisiana State Mineral Board, nor shall the Louisiana State Mineral Board be obligated to refund any consideration paid by the Lessor prior to such modification, cancellation, or abrogation, including, but not limited to, bonuses, rentals and royalties.

Applicant: Morganza Resources

Bidder	Cash Payment	Price/Acre	Rental	Oil	Gas	Other



SL 17947

SL 17219

PRAIRIE RIVER

CADDO PARISH

P.O.B.  
X=1,667,304.27  
Y=588,845.34

T15N - R12W

**TRACT 36947 - Caddo and De Soto Parishes, Louisiana**

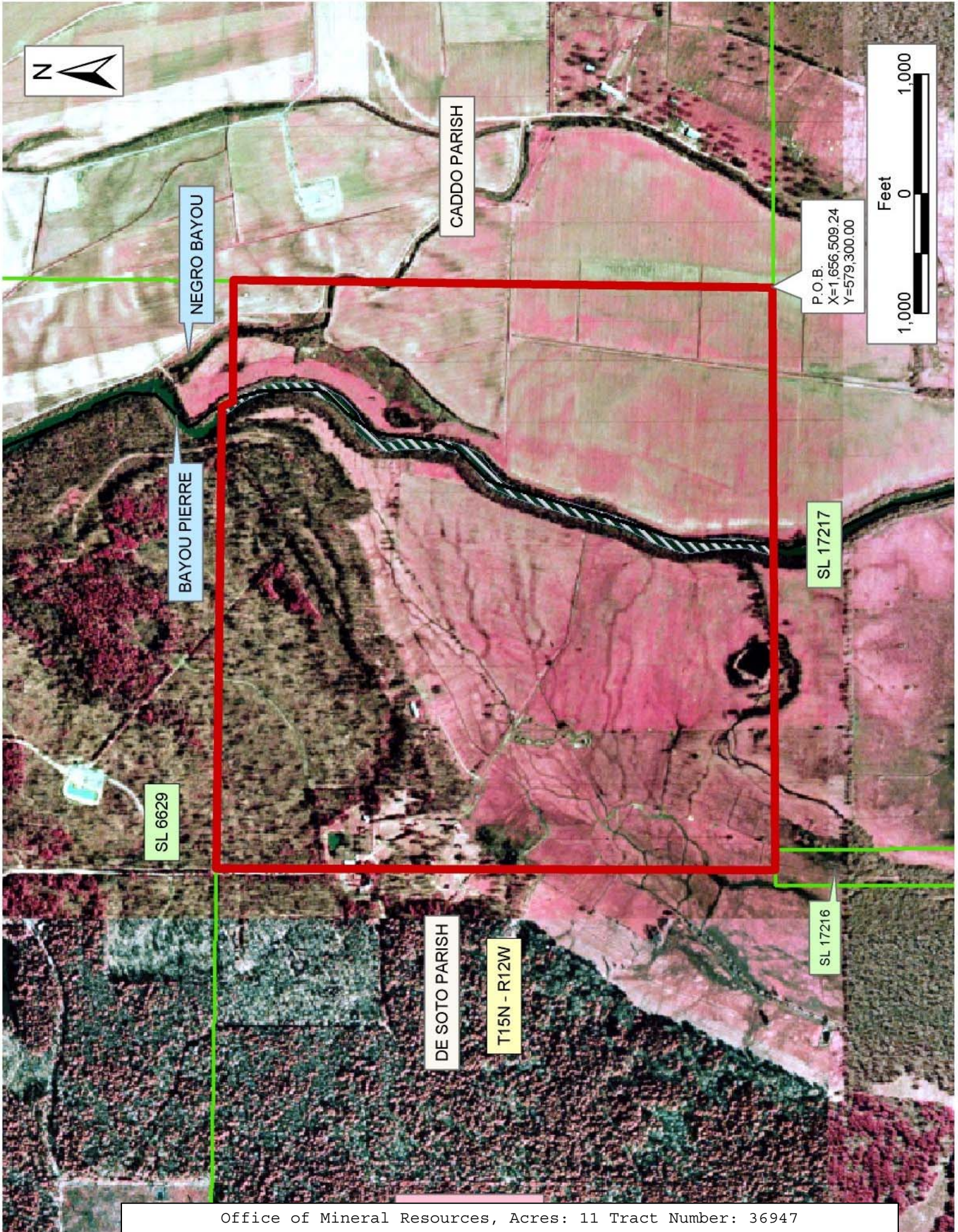
All of the lands now or formerly constituting the beds and bottoms of all water bodies of every nature and description the title of which vests in the State of Louisiana, together with all islands arising therein and other lands formed by accretion or by reliction, where allowed by law, excepting tax adjudicated lands, and not presently under mineral lease on December 8, 2004, situated in Caddo and De Soto Parishes, Louisiana, and more particularly described as follows: Beginning at a point on the North line of State Lease No. 17216 having Coordinates of X = 1,656,509.24 and Y = 579,300.00; thence West 4,877.99 feet on the North line of said State Lease No. 17216 to a point having Coordinates of X = 1,651,631.25 and Y = 579,300.00; thence North 00 degrees 25 minutes 09 seconds East approximately 4,676 feet to a point on the South line of State Lease No. 6629; thence Easterly on the South line of said State Lease No. 6629 to its Southeast corner; thence Southerly approximately 4,510 feet to the point of beginning, **LESS AND EXCEPT** that portion, if any, of State Lease No. 6629 which may lie within the above described tract, containing approximately **11 acres**, all as more particularly outlined on a plat on file in the Office of Mineral Resources, Department of Natural Resources. All bearings, distances and coordinates are based on Louisiana Coordinate System of 1927, (North or South Zone), where applicable.

NOTE: The above description of the Tract nominated for lease has been provided and corrected, where required, exclusively by the nomination party. Any mineral lease selected from this Tract and awarded by the Louisiana State Mineral Board shall be without warranty of any kind, either express, implied, or statutory, including, but not limited to, the implied warranties of merchantability and fitness for a particular purpose. Should the mineral lease awarded by the Louisiana State Mineral Board be subsequently modified, cancelled or abrogated due to the existence of conflicting leases, operating agreements, private claims or other future obligations or conditions which may affect all or any portion of the leased Tract, it shall not relieve the Lessee of the obligation to pay any bonus due thereon to the Louisiana State Mineral Board, nor shall the Louisiana State Mineral Board be obligated to refund any consideration paid by the Lessor prior to such modification, cancellation, or abrogation, including, but not limited to, bonuses, rentals and royalties.

Bidder	Cash Payment	Price/Acre	Rental	Oil	Gas	Other



Applicant: Morganza Resources



**TRACT 36948 - Caldwell Parish, Louisiana**

All of the lands now or formerly constituting the beds and bottoms of all water bodies of every nature and description the title of which vests in the State of Louisiana, together with all islands arising therein and other lands formed by accretion or by reliction, where allowed by law, excepting tax adjudicated lands, and not presently under mineral lease on December 8, 2004, situated in Caldwell Parish, Louisiana, and more particularly described as follows: Beginning at the Southeast corner of State Lease No. 17865, having Coordinates of X = 2,111,200.00 and Y = 570,000.00; thence East 11,000.00 feet to a point having Coordinates of X = 2,122,200.00 and Y = 570,000.00; thence South 16,500.00 feet to a point having Coordinates of X = 2,122,200.00 and Y = 553,500.00; thence West 16,500.00 feet to a point having Coordinates of X = 2,105,700.00 and Y = 553,500.00; thence North 16,500.00 feet to a point on the South boundary of said State Lease No. 17865, having Coordinates of X = 2,105,700.00 and Y = 570,000.00; thence East 5,500.00 feet along the South boundary of said State Lease No. 17865 to the point of beginning, containing approximately **400 acres**, all as more particularly outlined on a plat on file in the Office of Mineral Resources, Department of Natural Resources. All bearings, distances and coordinates are based on Louisiana Coordinate System of 1927, (North or South Zone), where applicable.

NOTE: The above description of the Tract nominated for lease has been provided and corrected, where required, exclusively by the nomination party. Any mineral lease selected from this Tract and awarded by the Louisiana State Mineral Board shall be without warranty of any kind, either express, implied, or statutory, including, but not limited to, the implied warranties of merchantability and fitness for a particular purpose. Should the mineral lease awarded by the Louisiana State Mineral Board be subsequently modified, cancelled or abrogated due to the existence of conflicting leases, operating agreements, private claims or other future obligations or conditions which may affect all or any portion of the leased Tract, it shall not relieve the Lessee of the obligation to pay any bonus due thereon to the Louisiana State Mineral Board, nor shall the Louisiana State Mineral Board be obligated to refund any consideration paid by the Lessor prior to such modification, cancellation, or abrogation, including, but not limited to, bonuses, rentals and royalties.

Bidder	Cash Payment	Price/Acre	Rental	Oil	Gas	Other

Applicant: Bradley Broussard Land Service, Inc.



CALDWELL PARISH

OUACHITA RIVER

P.O.B.  
X=2,111,200.00  
Y=570,000.00

SL 17865

T15N - R3E

T14N - R3E



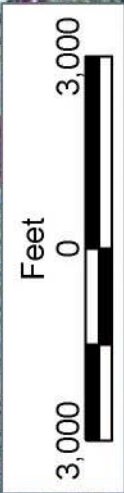
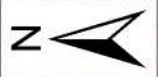
**TRACT 36949 - Caldwell Parish, Louisiana**

All of the lands now or formerly constituting the beds and bottoms of all water bodies of every nature and description the title of which vests in the State of Louisiana, together with all islands arising therein and other lands formed by accretion or by reliction, where allowed by law, excepting tax adjudicated lands, and not presently under mineral lease on December 8, 2004, situated in Caldwell Parish, Louisiana, and more particularly described as follows: Beginning at a point having Coordinates of X = 2,068,500.00 and Y = 564,850.00; thence East 16,500.00 feet to a point having Coordinates of X = 2,085,000.00 and Y = 564,850.00; thence South 16,500.00 feet to a point having Coordinates of X = 2,085,000.00 and Y = 548,350.00; thence West 16,500.00 feet to a point having Coordinates of X = 2,068,500.00 and Y = 548,350.00; thence North 16,500.00 feet to the point of beginning, containing approximately **40 acres**, all as more particularly outlined on a plat on file in the Office of Mineral Resources, Department of Natural Resources. All bearings, distances and coordinates are based on Louisiana Coordinate System of 1927, (North or South Zone), where applicable.

NOTE: The above description of the Tract nominated for lease has been provided and corrected, where required, exclusively by the nomination party. Any mineral lease selected from this Tract and awarded by the Louisiana State Mineral Board shall be without warranty of any kind, either express, implied, or statutory, including, but not limited to, the implied warranties of merchantability and fitness for a particular purpose. Should the mineral lease awarded by the Louisiana State Mineral Board be subsequently modified, cancelled or abrogated due to the existence of conflicting leases, operating agreements, private claims or other future obligations or conditions which may affect all or any portion of the leased Tract, it shall not relieve the Lessee of the obligation to pay any bonus due thereon to the Louisiana State Mineral Board, nor shall the Louisiana State Mineral Board be obligated to refund any consideration paid by the Lessor prior to such modification, cancellation, or abrogation, including, but not limited to, bonuses, rentals and royalties.

Applicant: Bradley Broussard Land Service

Bidder	Cash Payment	Price/Acre	Rental	Oil	Gas	Other



CALDWELL PARISH

CASTOR CREEK

P.O.B.  
X=2,068,500.00  
Y=564,850.00

T14N - R2E

TD 04120000

**TRACT 36950 - Natchitoches and Winn Parishes, Louisiana**

All of the lands now or formerly constituting the beds and bottoms of all water bodies of every nature and description the title of which vests in the State of Louisiana, together with all islands arising therein and other lands formed by accretion or by reliction, where allowed by law, excepting tax adjudicated lands, and not presently under mineral lease on December 8, 2004, situated in Natchitoches and Winn Parishes, Louisiana, and more particularly described as follows: Beginning at a point having Coordinates of X = 1,873,091.10 and Y = 475,275.31; thence East 10,592.00 feet to a point having Coordinates X = 1,883,683.10 and Y = 475,275.31; thence South 14,666.46 feet to a point having Coordinates 1,883,683.10 and Y = 460,608.85; thence West 10,592.00 feet to a point having Coordinates X = 1,873,091.10 and Y = 460,608.85; thence North 14,666.46 feet to the point of beginning, containing approximately **42 acres**, all as more particularly outlined on a plat on file in the Office of Mineral Resources, Department of Natural Resources. All bearings, distances and coordinates are based on Louisiana Coordinate System of 1927, (North or South Zone), where applicable.

NOTE: The above description of the Tract nominated for lease has been provided and corrected, where required, exclusively by the nomination party. Any mineral lease selected from this Tract and awarded by the Louisiana State Mineral Board shall be without warranty of any kind, either express, implied, or statutory, including, but not limited to, the implied warranties of merchantability and fitness for a particular purpose. Should the mineral lease awarded by the Louisiana State Mineral Board be subsequently modified, cancelled or abrogated due to the existence of conflicting leases, operating agreements, private claims or other future obligations or conditions which may affect all or any portion of the leased Tract, it shall not relieve the Lessee of the obligation to pay any bonus due thereon to the Louisiana State Mineral Board, nor shall the Louisiana State Mineral Board be obligated to refund any consideration paid by the Lessor prior to such modification, cancellation, or abrogation, including, but not limited to, bonuses, rentals and royalties.

NOTE: This tract is located within the boundaries of a wildlife management area or refuge and any operations conducted thereon in conjunction with this mineral lease may be subject to rules and regulations promulgated by the Department of Wildlife and Fisheries for the protection of fish, birds and other wildlife including, but not necessarily limited to, the following:

1. No activities will be allowed without written authorization from the Louisiana Department of Wildlife and Fisheries. All projects will be coordinated and approved by the appropriate WMA Supervisor prior to any activities on the wildlife management area.
2. Proposed projects will be evaluated on a case by case basis. Modifications to proposed projects may be required including, but not limited to, access routes, spoil placement, well sites, flow lines and



other appurtenant structures required by the Louisiana Department of Wildlife and Fisheries.

3. Compensatory mitigation will be required to offset unavoidable wetland impacts.

4. Removal of all structures, facilities, and equipment will be required within 120 days of abandonment unless otherwise agreed to by the Department of Wildlife and Fisheries.

5. No activities will be allowed during the hunting season unless approved by the Department.

6. Compliance with the said WMA regulations will be required unless otherwise specified by the Department.

7. Prior to submitting applications for wetland permits to Federal and State permitting agencies the lease holder shall coordinate project details with the Louisiana Department of Wildlife and Fisheries, Fur and Refuge Division. Contact person for the Department will be Mike Windham at (504) 568-5886.

Applicant: Clayton Petroleum, Ltd.

Bidder	Cash Payment	Price/Acre	Rental	Oil	Gas	Other



WINN PARISH

T12N - R5W



P.O.B.  
X=1,873,091.10  
Y=475,275.31

T11N - R5W

NATCHITOCHEES PARISH

SALINE LAKE

T11N - R6W

**TRACT 36951 - Natchitoches and Winn Parishes, Louisiana**

All of the lands now or formerly constituting the beds and bottoms of all water bodies of every nature and description the title of which vests in the State of Louisiana, together with all islands arising therein and other lands formed by accretion or by reliction, where allowed by law, excepting tax adjudicated lands, and not presently under mineral lease on December 8, 2004, situated in Natchitoches and Winn Parishes, Louisiana, and more particularly described as follows: Beginning at a point having Coordinates of X = 1,873,091.10 and Y = 460,608.85; thence East 10,592.00 feet to a point having Coordinates X = 1,883,683.10 and Y = 460,608.85; thence South 14,666.45 feet to a point having Coordinates 1,883,683.10 and Y = 445,942.40; thence West 10,592.00 feet to a point having Coordinates X = 1,873,091.10 and Y = 445,942.40; thence North 14,666.45 feet to the point of beginning, **LESS AND EXCEPT** those portions of Tract Nos. 36996, 36997, 36998, and 36999 from the December 8, 2004 Mineral Lease Sale, that lies within the above described tract, containing approximately **28 acres**, all as more particularly outlined on a plat on file in the Office of Mineral Resources, Department of Natural Resources. All bearings, distances and coordinates are based on Louisiana Coordinate System of 1927, (North or South Zone), where applicable.

NOTE: The above description of the Tract nominated for lease has been provided and corrected, where required, exclusively by the nomination party. Any mineral lease selected from this Tract and awarded by the Louisiana State Mineral Board shall be without warranty of any kind, either express, implied, or statutory, including, but not limited to, the implied warranties of merchantability and fitness for a particular purpose. Should the mineral lease awarded by the Louisiana State Mineral Board be subsequently modified, cancelled or abrogated due to the existence of conflicting leases, operating agreements, private claims or other future obligations or conditions which may affect all or any portion of the leased Tract, it shall not relieve the Lessee of the obligation to pay any bonus due thereon to the Louisiana State Mineral Board, nor shall the Louisiana State Mineral Board be obligated to refund any consideration paid by the Lessor prior to such modification, cancellation, or abrogation, including, but not limited to, bonuses, rentals and royalties.

NOTE: This tract is located within the boundaries of a wildlife management area or refuge and any operations conducted thereon in conjunction with this mineral lease may be subject to rules and regulations promulgated by the Department of Wildlife and Fisheries for the protection of fish, birds and other wildlife including, but not necessarily limited to, the following:

1. No activities will be allowed without written authorization from the Louisiana Department of Wildlife and Fisheries. All projects will be coordinated and approved by the appropriate WMA Supervisor prior to any activities on the wildlife management area.
2. Proposed projects will be evaluated on a case by case basis. Modifications to proposed projects may be required including, but not

limited to, access routes, spoil placement, well sites, flow lines and other appurtenant structures required by the Louisiana Department of Wildlife and Fisheries.

3. Compensatory mitigation will be required to offset unavoidable wetland impacts.

4. Removal of all structures, facilities, and equipment will be required within 120 days of abandonment unless otherwise agreed to by the Department of Wildlife and Fisheries.

5. No activities will be allowed during the hunting season unless approved by the Department.

6. Compliance with the said WMA regulations will be required unless otherwise specified by the Department.

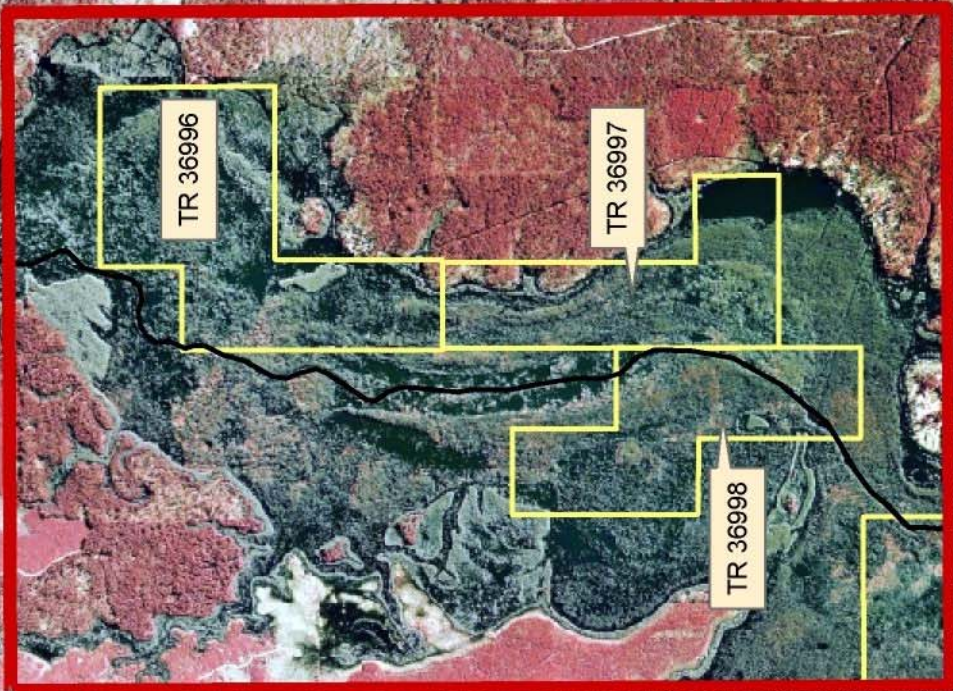
7. Prior to submitting applications for wetland permits to Federal and State permitting agencies the lease holder shall coordinate project details with the Louisiana Department of Wildlife and Fisheries, Fur and Refuge Division. Contact person for the Department will be Mike Windham at (504) 568-5886.

Applicant: Clayton Petroleum, Ltd.

Bidder	Cash Payment	Price/Acre	Rental	Oil	Gas	Other



WINN PARISH



TR 36996

TR 36997

TR 36998

TR 36999

P.O.B.  
X=1,873,091.10  
Y=460,608.85

T11N - R5W

NATCHITOCHE PARISH

SALINE LAKE

T11N - R6W