

**TRACT 36930 - Portion of Block 121, South Timbalier Area, Revised, Terrebonne Parish, Louisiana**

The beds and bottoms of all water bodies belonging to the State of Louisiana located in Block 121, South Timbalier Area, Revised, together with any present lands formed by accretion to the shoreline or islands formed therein, located in Terrebonne Parish, Louisiana, owned by and not presently under mineral lease as of December 8, 2004, from the State of Louisiana, the geographical area of which is more fully described as follows: Beginning at the Southwest corner of Block 121, South Timbalier Area, Revised having Coordinates of X = 2,242,289.88 and Y = 141,553.53; thence North 9,859.87 feet along the West line of said Block 121 to a point having Coordinates of X = 2,242,289.88 and Y = 151,413.40; thence Northeasterly on a straight line to a point having Coordinates of X = 2,251,540.00 and Y = 153,670.99; thence South 8,170.99 feet to the Northwest corner of State Lease No. 17700 having Coordinates of X = 2,251,540.00 and Y = 145,500.00; thence South 3,946.47 feet along the West line of said State Lease No. 17700 to its Southwest corner, also being a point on the South line of said Block 121 having Coordinates of X = 2,251,540.00 and Y = 141,553.53; thence West 9,250.12 feet along the South line of said Block 121 to the point of beginning, containing approximately **2,333.48 acres**, all as more particularly outlined on a plat on file in the Office of Mineral Resources, Department of Natural Resources. All bearings, distances and coordinates are based on Louisiana Coordinate System of 1927, (North or South Zone).

NOTE: The above description of the Tract nominated for lease has been provided and corrected, where required, exclusively by the nomination party. Any mineral lease selected from this Tract and awarded by the Louisiana State Mineral Board shall be without warranty of any kind, either express, implied, or statutory, including, but not limited to, the implied warranties of merchantability and fitness for a particular purpose. Should the mineral lease awarded by the Louisiana State Mineral Board be subsequently modified, cancelled or abrogated due to the existence of conflicting leases, operating agreements, private claims or other future obligations or conditions which may affect all or any portion of the leased Tract, it shall not relieve the Lessee of the obligation to pay any bonus due thereon to the Louisiana State Mineral Board, nor shall the Louisiana State Mineral Board be obligated to refund any consideration paid by the Lessor prior to such modification, cancellation, or abrogation, including, but not limited to, bonuses, rentals and royalties.

NOTE: The State of Louisiana does hereby reserve, and this lease shall be subject to, the imprescriptible right of surface use in the nature of a servitude in favor of the Department of Natural Resources, including its Offices and Commissions, for the sole purpose of implementing, constructing, servicing and maintaining approved coastal zone management and/or restoration projects. Utilization of any and all rights derived under this lease by the mineral lessee, its agents, successors or assigns, shall not interfere with nor hinder the reasonable surface use by the

Department of Natural Resources, its Offices or Commissions, as herein above reserved.

NOTE: It appears, according to our records, that a portion of this Tract is located within the restrictive safety fairway area as set out by the Corps of Engineers, U.S. Army and/or the restrictive anchorage area as set out by the U.S. Coast Guard.

NOTE: The Department of Wildlife and Fisheries has designated certain areas in the coastal waters of the State of Louisiana as Oyster Seed Bed Areas. The exact location of those Seed Bed Areas must be obtained from the Department of Wildlife and Fisheries and any work done under a mineral lease from the State of Louisiana may necessarily be conducted in conformity with the rules and regulations promulgated by the said Department of Wildlife and Fisheries for Oyster Seed Bed Areas.

Applicant: Harold J. Anderson, Inc.

Bidder	Cash Payment	Price/Acre	Rental	Oil	Gas	Other



TERREBONNE PARISH

SOUTH TIMBALIER AREA, REVISED

SL 1249

SL 2857

SL 17700

SL 2986

BLOCK ST0121

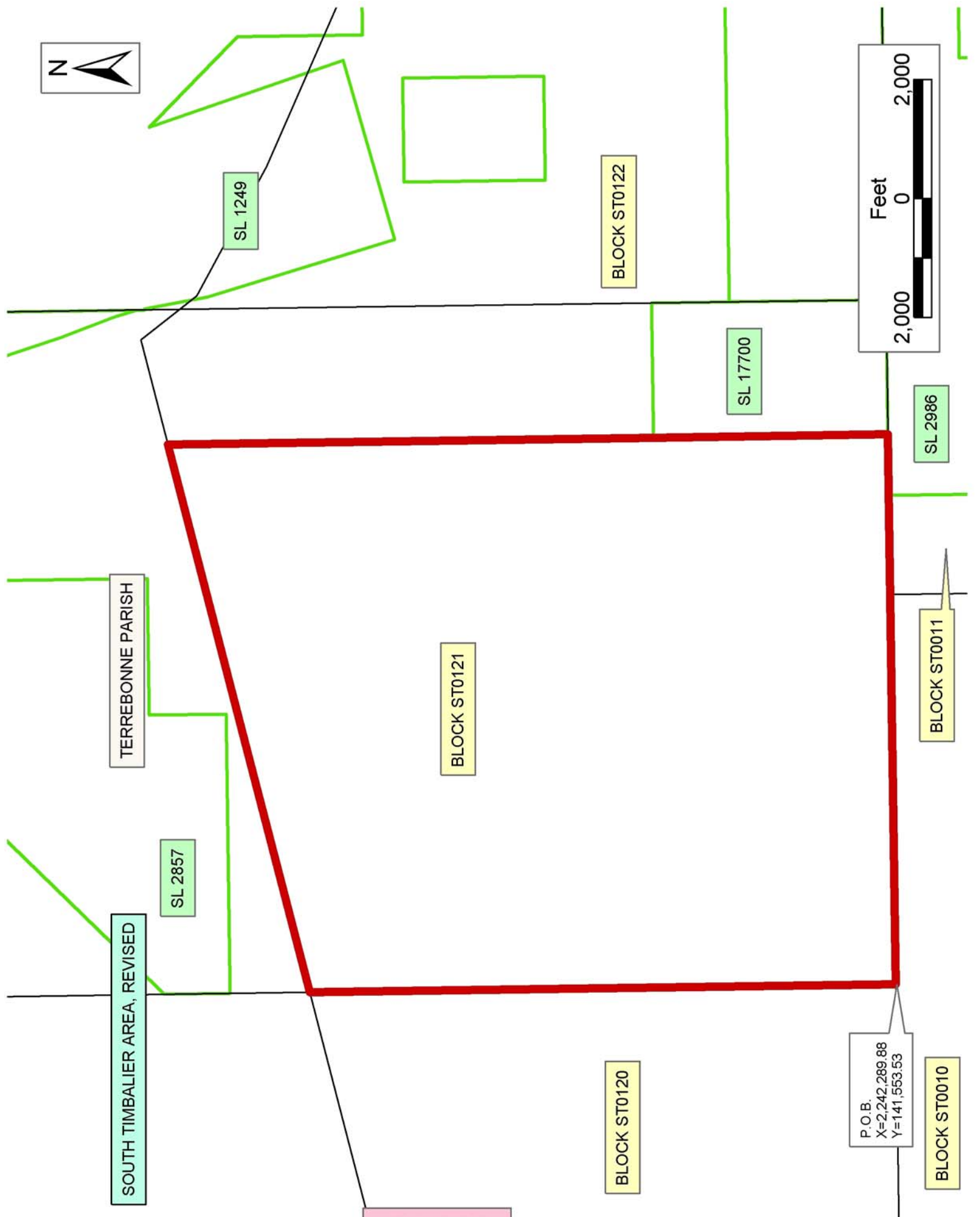
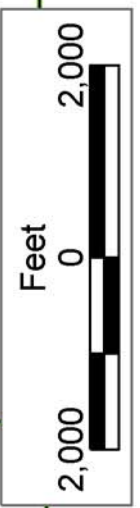
BLOCK ST0122

BLOCK ST0120

BLOCK ST0011

BLOCK ST0010

P.O.B.  
X=2,242,289.88  
Y=141,553.53



**TRACT 36931 - Portion of Blocks 121, and 122, South Timbalier Area, Revised, Terrebonne Parish, Louisiana**

The beds and bottoms of all water bodies belonging to the State of Louisiana located in Blocks 121, and 122, South Timbalier Area, Revised, together with any present lands formed by accretion to the shoreline or islands formed therein, located in Terrebonne Parish, Louisiana, owned by and not presently under mineral lease as of December 8, 2004, from the State of Louisiana, the geographical area of which is more fully described as follows: Beginning at the Northwest corner of State Lease No. 17700, located within Block 121, South Timbalier Area, Revised, having Coordinates of X = 2,251,540.00 and Y = 145,500.00; thence North 8,170.99 feet to a point having Coordinates of X = 2,251,540.00 and Y = 153,670.99; thence Northeasterly on a straight line to a point having Coordinates of X = 2,253,306.00 and Y = 154,102.00; thence Southeasterly on a straight line to a point on the East line of Block 121, South Timbalier Area, Revised, also being a point on the West line of Block 122, South Timbalier Area, Revised having Coordinates of X = 2,253,808.04 and Y = 153,444.85; thence Southeasterly on a straight line to a point on the West line of State Lease No. 1249, as amended having Coordinates of X = 2,253,964.83 and Y = 153,239.62; thence along the boundary of said State Lease No. 1249 the following courses: South 09 degrees 41 minutes 16 seconds East 268.45 feet, South 16 degrees 17 minutes 30 seconds East 3,297.96 feet, North 74 degrees 44 minutes 41 seconds East 999.81 feet, North 74 degrees 44 minutes 41 seconds East 2,135.69 feet and North 18 degrees 14 minutes 37 seconds West 627.22 feet to a point on the boundary of said State Lease No. 1249 having Coordinates of X = 2,257,763.82 and Y = 151,230.16; thence Southeasterly on a straight line to a point on the boundary of said State Lease No. 1249 having Coordinates of X = 2,258,386.02 and Y = 150,946.98; thence along the boundary of said State Lease No. 1249 the following courses: South 641.98 feet, East 1,200.00 feet, South 2,280.00 feet, East 480.00 feet, South 2,040.00 feet, East 1,140.00 feet, South 1,791.47 feet and West 7,397.98 feet to a point on the East line of said State Lease No. 17700 having Coordinates of X = 2,253,808.04 and Y = 144,193.53; thence along the boundary of said State Lease No. 17700 the following courses: North 1,306.47 feet and West 2,268.04 feet to the point of beginning, **LESS AND EXCEPT** all that portion of State Lease No. 1249, as amended that lies within the above described tract, more particularly described as follows: Beginning at a point having Coordinates of X = 2,257,649.74 and Y = 147,262.53; thence West 1,750.00 feet to a point having Coordinates of X = 2,255,899.74 and Y = 147,262.53; thence North 2,375.00 feet to a point having Coordinates of X = 2,255,899.74 and Y = 149,637.53; thence East 1,750.00 feet to a point having Coordinates of X = 2,257,649.74 and Y = 149,637.53; thence South 2,375.00 feet to the point of beginning, containing approximately **1,279.23 acres**, all as more particularly outlined on a plat on file in the Office of Mineral Resources, Department of Natural Resources. All bearings, distances and coordinates are based on Louisiana Coordinate System of 1927, (North or South Zone).

NOTE: The above description of the Tract nominated for lease has been provided and corrected, where required, exclusively by the nomination party. Any mineral lease selected from this Tract and awarded by the Louisiana State Mineral Board shall be without warranty of any kind, either express, implied, or statutory, including, but not limited to, the implied warranties of merchantability and fitness for a particular purpose. Should the mineral lease awarded by the Louisiana State Mineral Board be subsequently modified, cancelled or abrogated due to the existence of conflicting leases, operating agreements, private claims or other future obligations or conditions which may affect all or any portion of the leased Tract, it shall not relieve the Lessee of the obligation to pay any bonus due thereon to the Louisiana State Mineral Board, nor shall the Louisiana State Mineral Board be obligated to refund any consideration paid by the Lessor prior to such modification, cancellation, or abrogation, including, but not limited to, bonuses, rentals and royalties.

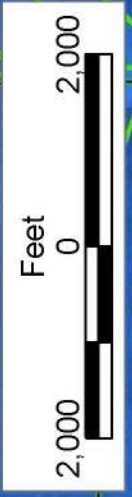
NOTE: The State of Louisiana does hereby reserve, and this lease shall be subject to, the imprescriptible right of surface use in the nature of a servitude in favor of the Department of Natural Resources, including its Offices and Commissions, for the sole purpose of implementing, constructing, servicing and maintaining approved coastal zone management and/or restoration projects. Utilization of any and all rights derived under this lease by the mineral lessee, its agents, successors or assigns, shall not interfere with nor hinder the reasonable surface use by the Department of Natural Resources, its Offices or Commissions, as herein above reserved.

NOTE: It appears, according to our records, that a portion of this Tract is located within the restrictive safety fairway area as set out by the Corps of Engineers, U.S. Army and/or the restrictive anchorage area as set out by the U.S. Coast Guard.

NOTE: The Department of Wildlife and Fisheries has designated certain areas in the coastal waters of the State of Louisiana as Oyster Seed Bed Areas. The exact location of those Seed Bed Areas must be obtained from the Department of Wildlife and Fisheries and any work done under a mineral lease from the State of Louisiana may necessarily be conducted in conformity with the rules and regulations promulgated by the said Department of Wildlife and Fisheries for Oyster Seed Bed Areas.

Applicant: Harold J. Anderson, Inc.

Bidder	Cash Payment	Price/Acre	Rental	Oil	Gas	Other



SL 301

BLOCK ST0122

SL 1249

TERREBONNE PARISH

SOUTH TIMBALIER AREA, REVISED

SL 1249

SL 17700

BLOCK ST0121

P.O.B.  
X=2,251,540.00  
Y=145,500.00

SL 2857

BLOCK ST0121

**TRACT 36932 - Portion of Block 120, South Timbalier Area, Revised, Terrebonne Parish, Louisiana**

The beds and bottoms of all water bodies belonging to the State of Louisiana located in Block 120, South Timbalier Area, Revised, together with any present lands formed by accretion to the shoreline or islands formed therein, located in Terrebonne Parish, Louisiana, owned by and not presently under mineral lease as of December 8, 2004, from the State of Louisiana, the geographical area of which is more fully described as follows: Beginning at the Southeast corner of Block 120, South Timbalier Area, Revised having Coordinates of X = 2,242,289.88 and Y = 141,553.53; thence West 9,314.88 feet along the South line of said Block 120 to a point having Coordinates of X = 2,232,975.00 and Y = 141,553.53; thence North 5,946.47 feet to a point having Coordinates of X = 2,232,975.00 and Y = 147,500.00; thence East 5,525.00 feet to a point having Coordinates of X = 2,238,500.00 and Y = 147,500.00; thence North 2,988.44 feet to a point having Coordinates of X = 2,238,500.00 and Y = 150,488.44; thence Northeasterly on a straight line to a point on the East line of said Block 120 having Coordinates of X = 2,242,289.88 and Y = 151,413.40; thence South 9,859.87 feet along the East line of said Block 120 to the point of beginning, containing approximately **1,571.84 acres**, all as more particularly outlined on a plat on file in the Office of Mineral Resources, Department of Natural Resources. All bearings, distances and coordinates are based on Louisiana Coordinate System of 1927, (North or South Zone).

NOTE: The above description of the Tract nominated for lease has been provided and corrected, where required, exclusively by the nomination party. Any mineral lease selected from this Tract and awarded by the Louisiana State Mineral Board shall be without warranty of any kind, either express, implied, or statutory, including, but not limited to, the implied warranties of merchantability and fitness for a particular purpose. Should the mineral lease awarded by the Louisiana State Mineral Board be subsequently modified, cancelled or abrogated due to the existence of conflicting leases, operating agreements, private claims or other future obligations or conditions which may affect all or any portion of the leased Tract, it shall not relieve the Lessee of the obligation to pay any bonus due thereon to the Louisiana State Mineral Board, nor shall the Louisiana State Mineral Board be obligated to refund any consideration paid by the Lessor prior to such modification, cancellation, or abrogation, including, but not limited to, bonuses, rentals and royalties.

NOTE: The State of Louisiana does hereby reserve, and this lease shall be subject to, the imprescriptible right of surface use in the nature of a servitude in favor of the Department of Natural Resources, including its Offices and Commissions, for the sole purpose of implementing, constructing, servicing and maintaining approved coastal zone management and/or restoration projects. Utilization of any and all rights derived under this lease by the mineral lessee, its agents, successors or assigns, shall not interfere with nor hinder the reasonable surface use by the



Department of Natural Resources, its Offices or Commissions, as herein above reserved.

NOTE: It appears, according to our records, that a portion of this Tract is located within the restrictive safety fairway area as set out by the Corps of Engineers, U.S. Army and/or the restrictive anchorage area as set out by the U.S. Coast Guard.

NOTE: The Department of Wildlife and Fisheries has designated certain areas in the coastal waters of the State of Louisiana as Oyster Seed Bed Areas. The exact location of those Seed Bed Areas must be obtained from the Department of Wildlife and Fisheries and any work done under a mineral lease from the State of Louisiana may necessarily be conducted in conformity with the rules and regulations promulgated by the said Department of Wildlife and Fisheries for Oyster Seed Bed Areas.

Applicant: Harold J. Anderson, Inc.

Bidder	Cash Payment	Price/Acre	Rental	Oil	Gas	Other



TERREBONNE PARISH

SL 16942

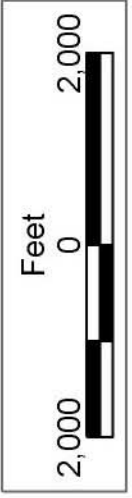
SL 16943

BLOCK ST0121

BLOCK ST0120

P.O.B.  
X=2,242,289.88  
Y=141,553.53

SOUTH TIMBALIER AREA, REVISED



**TRACT 36933 - Portion of Block 12, South Timbalier Area, Revised, Terrebonne Parish, Louisiana**

The beds and bottoms of all water bodies belonging to the State of Louisiana located in Block 12, South Timbalier Area, Revised, together with any present lands formed by accretion to the shoreline or islands formed therein, located in Terrebonne Parish, Louisiana, owned by and not presently under mineral lease as of December 8, 2004, from the State of Louisiana, the geographical area of which is more fully described as follows: Beginning at the Southeast corner of Block 12, South Timbalier Area, Revised having Coordinates of X = 2,275,580.02 and Y = 134,330.00; thence West 11,134.00 feet along the South line of said Block 12 to its Southwest corner having Coordinates of X = 2,264,446.02 and Y = 134,330.00; thence North 6,780.91 feet along the West line of said Block 12 to a point, also being the South corner of State Lease No. 15110 having Coordinates of X = 2,264,446.02 and Y = 141,110.91; thence along the boundary of said State Lease No. 15110 the following courses: North 47 degrees 15 minutes 46 seconds East 1,061.94 feet and North 71 degrees 53 minutes 44 seconds West 820.59 feet to the North corner of said State Lease No. 15110, also being a point on the West line of said Block 12 having Coordinates of X = 2,264,446.02 and Y = 142,086.58; thence North 3,388.42 feet along the West line of said Block 12 to a point, also being the Southwest corner of State Lease No. 1021 having Coordinates of X = 2,264,446.02 and Y = 145,475.00; thence South 68 degrees 21 minutes 41 seconds East 3,425.80 feet along the South line of said State Lease No. 1021 to a point, also being the Northwest corner of State Lease No. 16529, as amended having Coordinates of X = 2,267,630.40 and Y = 144,211.73; thence along the boundary of said State Lease No. 16529 the following courses: South 21 degrees 38 minutes 20 seconds West 1,510.08 feet, South 68 degrees 21 minutes 41 seconds East 3,000.00 feet and North 21 degrees 38 minutes 19 seconds East 1,510.08 feet to the Northeast corner of said State Lease No. 16529; also being a point on the South line of said State Lease No. 1021 having Coordinates of X = 2,270,418.98 and Y = 143,105.48; thence along the boundary of said State Lease No. 1021 the following courses: South 68 degrees 21 minutes 41 seconds East 625.06 feet and North 06 degrees 43 minutes 38 seconds East 1,801.14 feet to the Northeast corner of said State Lease No. 1021 having Coordinates of X = 2,271,210.98 and Y = 144,663.73; thence Southeasterly on a straight line to a point having Coordinates of X = 2,274,749.00 and Y = 143,161.00; thence Southeasterly on a straight line to a point on the East line of said Block 12 having Coordinates of X = 2,275,580.02 and Y = 142,945.03; thence South 3,200.00 feet along the East line of said Block 12 to a point, also being the Northeast corner of State Lease No. 15836 having Coordinates of X = 2,275,580.02 and Y = 139,745.03; thence along the boundary of said State Lease No. 15836 the following courses: West 2,500.00 feet, South 4,800.00 feet and East 2,500.00 feet to the Southeast corner of said State Lease No. 15836, also being a point on the East line of said Block 12 having Coordinates of X = 2,275,580.02 and Y = 134,945.03; thence South 615.03 feet along the East line of said Block 12 to the point of beginning, **LESS AND EXCEPT** any portions of State Lease No. 1021 and State Lease No. 15110

which may lie within the above described tract, containing approximately **2,083.48 acres**, all as more particularly outlined on a plat on file in the Office of Mineral Resources, Department of Natural Resources. All bearings, distances and coordinates are based on Louisiana Coordinate System of 1927, (North or South Zone).

NOTE: The above description of the Tract nominated for lease has been provided and corrected, where required, exclusively by the nomination party. Any mineral lease selected from this Tract and awarded by the Louisiana State Mineral Board shall be without warranty of any kind, either express, implied, or statutory, including, but not limited to, the implied warranties of merchantability and fitness for a particular purpose. Should the mineral lease awarded by the Louisiana State Mineral Board be subsequently modified, cancelled or abrogated due to the existence of conflicting leases, operating agreements, private claims or other future obligations or conditions which may affect all or any portion of the leased Tract, it shall not relieve the Lessee of the obligation to pay any bonus due thereon to the Louisiana State Mineral Board, nor shall the Louisiana State Mineral Board be obligated to refund any consideration paid by the Lessor prior to such modification, cancellation, or abrogation, including, but not limited to, bonuses, rentals and royalties.

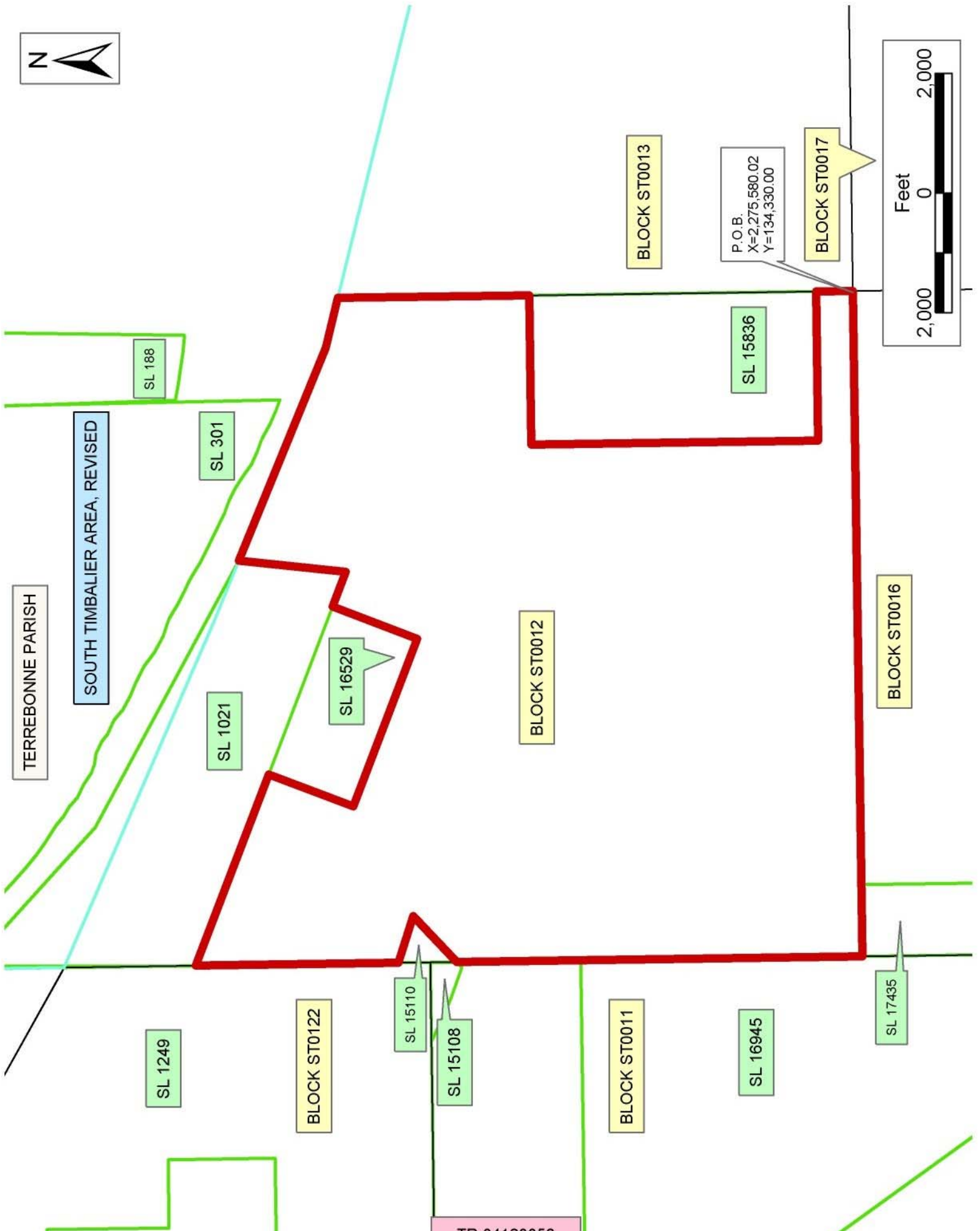
NOTE: The State of Louisiana does hereby reserve, and this lease shall be subject to, the imprescriptible right of surface use in the nature of a servitude in favor of the Department of Natural Resources, including its Offices and Commissions, for the sole purpose of implementing, constructing, servicing and maintaining approved coastal zone management and/or restoration projects. Utilization of any and all rights derived under this lease by the mineral lessee, its agents, successors or assigns, shall not interfere with nor hinder the reasonable surface use by the Department of Natural Resources, its Offices or Commissions, as herein above reserved.

NOTE: It appears, according to our records, that a portion of this Tract is located within the restrictive safety fairway area as set out by the Corps of Engineers, U.S. Army and/or the restrictive anchorage area as set out by the U.S. Coast Guard.

NOTE: The Department of Wildlife and Fisheries has designated certain areas in the coastal waters of the State of Louisiana as Oyster Seed Bed Areas. The exact location of those Seed Bed Areas must be obtained from the Department of Wildlife and Fisheries and any work done under a mineral lease from the State of Louisiana may necessarily be conducted in conformity with the rules and regulations promulgated by the said Department of Wildlife and Fisheries for Oyster Seed Bed Areas.

Applicant: Harold J. Anderson, Inc.

Bidder	Cash Payment	Price/Acre	Rental	Oil	Gas	Other



**TRACT 36934 - Portion of Block 13, South Timbalier Area, Revised, Terrebonne Parish, Louisiana**

The beds and bottoms of all water bodies belonging to the State of Louisiana located in Block 13, South Timbalier Area, Revised, together with any present lands formed by accretion to the shoreline or islands formed therein, located in Terrebonne Parish, Louisiana, owned by and not presently under mineral lease as of December 8, 2004, from the State of Louisiana, the geographical area of which is more fully described as follows: Beginning at the Southwest corner of Block 13, South Timbalier Area, Revised having Coordinates of X = 2,275,580.02 and Y = 134,330.00; thence North 8,615.03 feet along the West line of said Block 13 to a point having Coordinates of X = 2,275,580.02 and Y = 142,945.03; thence Southeasterly on a straight line to a point having Coordinates of X = 2,281,202.00 and Y = 141,484.00; thence Southeasterly on a straight line to the Northwest corner of State Lease No. 17729 having Coordinates of X = 2,285,950.00 and Y = 140,584.62; thence South 6,254.62 feet along the West line of said State Lease No. 17729 to its Southwest corner, also being a point on the South line of said Block 13 having Coordinates of X = 2,285,950.00 and Y = 134,330.00; thence West 10,369.98 feet along the South line of said Block 13 to the point of beginning, containing approximately **1,748.36 acres**, all as more particularly outlined on a plat on file in the Office of Mineral Resources, Department of Natural Resources. All bearings, distances and coordinates are based on Louisiana Coordinate System of 1927, (North or South Zone).

NOTE: The above description of the Tract nominated for lease has been provided and corrected, where required, exclusively by the nomination party. Any mineral lease selected from this Tract and awarded by the Louisiana State Mineral Board shall be without warranty of any kind, either express, implied, or statutory, including, but not limited to, the implied warranties of merchantability and fitness for a particular purpose. Should the mineral lease awarded by the Louisiana State Mineral Board be subsequently modified, cancelled or abrogated due to the existence of conflicting leases, operating agreements, private claims or other future obligations or conditions which may affect all or any portion of the leased Tract, it shall not relieve the Lessee of the obligation to pay any bonus due thereon to the Louisiana State Mineral Board, nor shall the Louisiana State Mineral Board be obligated to refund any consideration paid by the Lessor prior to such modification, cancellation, or abrogation, including, but not limited to, bonuses, rentals and royalties.

NOTE: The State of Louisiana does hereby reserve, and this lease shall be subject to, the imprescriptible right of surface use in the nature of a servitude in favor of the Department of Natural Resources, including its Offices and Commissions, for the sole purpose of implementing, constructing, servicing and maintaining approved coastal zone management and/or restoration projects. Utilization of any and all rights derived under this lease by the mineral lessee, its agents, successors or assigns, shall not interfere with nor hinder the reasonable surface use by the

Department of Natural Resources, its Offices or Commissions, as herein above reserved.

NOTE: The Department of Wildlife and Fisheries has designated certain areas in the coastal waters of the State of Louisiana as Oyster Seed Bed Areas. The exact location of those Seed Bed Areas must be obtained from the Department of Wildlife and Fisheries and any work done under a mineral lease from the State of Louisiana may necessarily be conducted in conformity with the rules and regulations promulgated by the said Department of Wildlife and Fisheries for Oyster Seed Bed Areas.

Applicant: Harold J. Anderson, Inc.

Bidder	Cash Payment	Price/Acre	Rental	Oil	Gas	Other





SOUTH TIMBALIER AREA, REVISED

TERREBONNE PARISH

SL 301

SL 2703

BLOCK ST0012

BLOCK ST0013

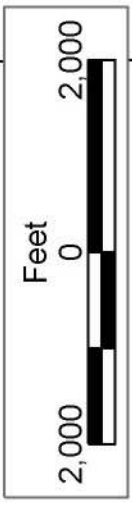
SL 15836

SL 17729

P.O.B.  
X=2,275,580.02  
Y=134,330.00

BLOCK ST0016

BLOCK ST0017



**TRACT 36935 - Portion of Block 11, South Timbalier Area, Revised, Terrebonne Parish, Louisiana**

The beds and bottoms of all water bodies belonging to the State of Louisiana located in Block 11, South Timbalier Area, Revised, together with any present lands formed by accretion to the shoreline or islands formed therein, located in Terrebonne Parish, Louisiana, owned by and not presently under mineral lease as of December 8, 2004, from the State of Louisiana, the geographical area of which is more fully described as follows: Beginning at the Northwest corner of Block 11, South Timbalier Area, Revised having Coordinates of X = 2,248,846.02 and Y = 141,553.53; thence East 1,666.21 feet along the North line of said Block 11 to the Northwest corner of State Lease No. 2986, as amended having Coordinates of X = 2,250,512.23 and Y = 141,553.53; thence along the boundary of said State Lease No. 2986 the following courses: South 2,550.00 feet, East 3,325.81 feet, South 2,040.00 feet, East 4,020.00 feet, North 3,300.00 feet, East 1,387.98 feet and North 1,290.00 feet to the Northeast corner of said State Lease No. 2986, also being a point on the North line of said Block 11 having Coordinates of X = 2,259,246.02 and Y = 141,553.53; thence East 3,878.61 feet along the North line of said Block 11 to the Northwest corner of State Lease No. 15108, as amended, having Coordinates of X = 2,263,124.63 and Y = 141,553.53; thence Southeasterly along the boundary of State Lease No. 15108 the following courses: South 64 degrees 12 minutes 06 East 500.00 feet, South 66 degrees 02 minutes 24 seconds East 301.90 feet, South 69 degrees 40 minutes 04 seconds East 537.53 feet and North 47 degrees 15 minutes 46 seconds East 124.31 feet to a point on the East line of said Block 11 having Coordinates of X = 2,264,446.02 and Y = 141,110.92; thence South 2,070.47 feet along the East line of said Block 11 to the Northeast corner of State Lease No. 16945 having Coordinates of X = 2,264,446.02 and Y = 139,040.45; thence along the boundary of said State Lease No. 16945 the following courses: West 5,200.00 feet, South 3,436.92 feet and South 35 degrees 03 minutes 18 seconds East 3,830.35 feet to the Southwest corner of said State Lease No. 16945, also being the Northwest corner of State Lease No. 16528 having Coordinates of X = 2,261,446.02 and Y = 132,468.00; thence South 61 degrees 00 minutes 43 seconds West 3,920.34 feet along the West line of said State Lease No. 16528 to its Southwest corner having Coordinates of X = 2,258,016.82 and Y = 130,568.10; thence Northwesterly on a straight line to a point having Coordinates of X = 2,256,981 and Y = 131,033; thence Northwesterly on an arc having a radius of 18,240.60 feet and a center at X = 2,264,447 and Y = 147,676 to a point having Coordinates of X = 2,255,335 and Y = 131,874; thence Northwesterly on a straight line to a point having Coordinates of X = 2,251,881 and Y = 133,867; thence Northwesterly on a straight line to a point having Coordinates of X = 2,250,291 and Y = 134,590; thence Southwesterly on a straight line to a point on the West line of said Block 11 having Coordinates of X = 2,248,846.02 and Y = 134,237.33; thence North 7,316.20 feet along the West line of said Block 11 to the point of beginning, containing approximately **1,872.76 acres, LESS AND EXCEPT** that portion thereof, if any, lying seaward of the line three nautical miles from the coast line of Louisiana, as said three mile line has been decreed

by the Supreme Court of the United States, as determined by a Special Master appointed therein, in litigation styled **United States v. State of Louisiana et al No. 9 Original**, in 1975, all as more particularly outlined on a plat in the Office of Mineral Resources, Department of Natural Resources. All bearings, distances and coordinates are based on the Louisiana Coordinate System of 1927, (South Zone).

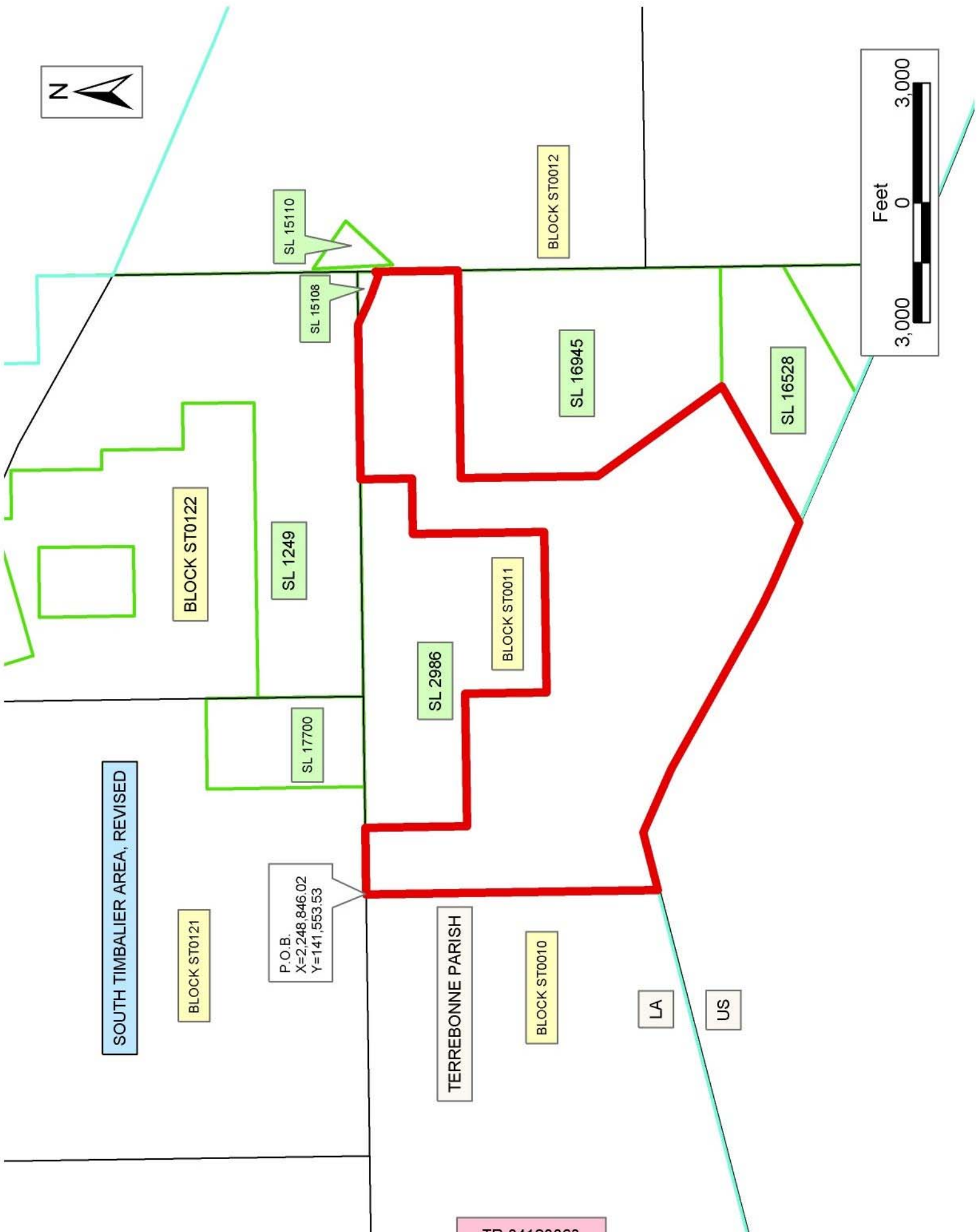
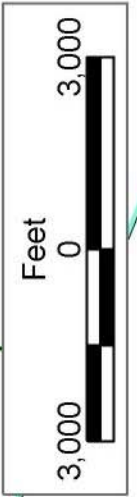
NOTE: The above description of the Tract nominated for lease has been provided and corrected, where required, exclusively by the nomination party. Any mineral lease selected from this Tract and awarded by the Louisiana State Mineral Board shall be without warranty of any kind, either express, implied, or statutory, including, but not limited to, the implied warranties of merchantability and fitness for a particular purpose. Should the mineral lease awarded by the Louisiana State Mineral Board be subsequently modified, cancelled or abrogated due to the existence of conflicting leases, operating agreements, private claims or other future obligations or conditions which may affect all or any portion of the leased Tract, it shall not relieve the Lessee of the obligation to pay any bonus due thereon to the Louisiana State Mineral Board, nor shall the Louisiana State Mineral Board be obligated to refund any consideration paid by the Lessor prior to such modification, cancellation, or abrogation, including, but not limited to, bonuses, rentals and royalties.

NOTE: The State of Louisiana does hereby reserve, and this lease shall be subject to, the imprescriptible right of surface use in the nature of a servitude in favor of the Department of Natural Resources, including its Offices and Commissions, for the sole purpose of implementing, constructing, servicing and maintaining approved coastal zone management and/or restoration projects. Utilization of any and all rights derived under this lease by the mineral lessee, its agents, successors or assigns, shall not interfere with nor hinder the reasonable surface use by the Department of Natural Resources, its Offices or Commissions, as herein above reserved.

NOTE: It appears, according to our records, that a portion of this Tract is located within the restrictive safety fairway area as set out by the Corps of Engineers, U.S. Army and/or the restrictive anchorage area as set out by the U.S. Coast Guard.

Applicant: Harold J. Anderson, Inc.

Bidder	Cash Payment	Price/Acre	Rental	Oil	Gas	Other



SOUTH TIMBALIER AREA, REVISED

P.O.B.  
X=2,248,846.02  
Y=141,553.53

TERREBONNE PARISH

LA

US

**TRACT 36936 - Portion of Block 9, South Timbalier Area, Revised, Terrebonne Parish, Louisiana**

The beds and bottoms of all water bodies belonging to the State of Louisiana located in Block 9, South Timbalier Area, Revised, together with any present lands formed by accretion to the shoreline or islands formed therein, located in Terrebonne Parish, Louisiana, owned by and not presently under mineral lease as of December 8, 2004, from the State of Louisiana, the geographical area of which is more fully described as follows: Beginning at the Northeast corner of Block 9, South Timbalier Area, Revised having Coordinates of X = 2,233,246.02 and Y = 141,553.53; thence South 11,123.57 feet along the East line of said Block 9 to a point having Coordinates of X = 2,233,246.02 and Y = 130,429.96; thence Southwesterly on a straight line to a point having Coordinates of X = 2,229,997.00 and Y = 129,637.00; thence Southwesterly on a straight line to a point having Coordinates of X = 2,228,299.00 and Y = 128,761.00; thence Southwesterly on a straight line to a point having Coordinates of X = 2,227,466.00 and Y = 128,358.00; thence Southwesterly on a straight line to a point having Coordinates of X = 2,226,295.33 and Y = 127,827.31; thence North 4,543.74 feet to the Southwest corner of State Lease No. 16944 having Coordinates of X = 2,226,295.33 and Y = 132,371.05; thence along the boundary of said State Lease No. 16944 the following courses: East 4,476.39 feet, North 2,000.00 feet and West 3,902.59 feet to a point on the North line of said State lease No. 16944, also being the Southeast corner of State Lease No. 18005 having Coordinates of X = 2,226,869.13 and Y = 134,371.05; thence along the boundary of said State Lease No. 18005 the following courses: North 29 degrees 17 minutes 11 seconds East 4,362.12 feet and North 29 degrees 17 minutes 11 seconds West 703.16 feet to the Northwest corner of said State Lease No. 18005 and a point on the East line of State Lease No. 15307 having Coordinates of X = 2,228,659.00 and Y = 138,788.92; thence North 29 degrees 17 minutes 11 seconds East 3,169.75 feet on the East line of said State Lease No. 15307 to its Northeast corner, and a point on the North line of said Block 9 having Coordinates of X = 2,230,209.57 and Y = 141,553.53; thence East 3,036.45 feet along the North line of said Block 9 to the point of beginning, containing approximately **1,367.33 acres, LESS AND EXCEPT** that portion thereof, if any, lying seaward of the line three nautical miles from the coast line of Louisiana, as said three mile line has been decreed by the Supreme Court of the United States, as determined by a Special Master appointed therein, in litigation styled **United States v. State of Louisiana et al No. 9 Original**, in 1975, all as more particularly outlined on a plat in the Office of Mineral Resources, Department of Natural Resources. All bearings, distances and coordinates are based on the Louisiana Coordinate System of 1927, (South Zone).

NOTE: The above description of the Tract nominated for lease has been provided and corrected, where required, exclusively by the nomination party. Any mineral lease selected from this Tract and awarded by the Louisiana State Mineral Board shall be without warranty of any kind, either express, implied, or statutory, including, but not limited to, the

implied warranties of merchantability and fitness for a particular purpose. Should the mineral lease awarded by the Louisiana State Mineral Board be subsequently modified, cancelled or abrogated due to the existence of conflicting leases, operating agreements, private claims or other future obligations or conditions which may affect all or any portion of the leased Tract, it shall not relieve the Lessee of the obligation to pay any bonus due thereon to the Louisiana State Mineral Board, nor shall the Louisiana State Mineral Board be obligated to refund any consideration paid by the Lessor prior to such modification, cancellation, or abrogation, including, but not limited to, bonuses, rentals and royalties.

NOTE: The State of Louisiana does hereby reserve, and this lease shall be subject to, the imprescriptible right of surface use in the nature of a servitude in favor of the Department of Natural Resources, including its Offices and Commissions, for the sole purpose of implementing, constructing, servicing and maintaining approved coastal zone management and/or restoration projects. Utilization of any and all rights derived under this lease by the mineral lessee, its agents, successors or assigns, shall not interfere with nor hinder the reasonable surface use by the Department of Natural Resources, its Offices or Commissions, as herein above reserved.

Applicant: Harold J. Anderson, Inc.

Bidder	Cash Payment	Price/Acre	Rental	Oil	Gas	Other



P. O. B.  
X=2,233,246.02  
Y=141,553.53

BLOCK ST0120

BLOCK ST0119

SOUTH TIMBALIER AREA, REVISED

TERREBONNE PARISH

SL 15307

SL 18005

SL 16604

SL 4238

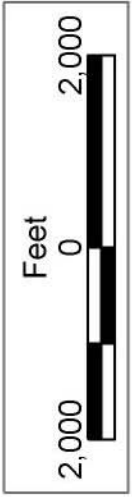
BLOCK ST0009

SL 16944

BLOCK ST0010

LA

US





**TRACT 36937 - Portion of Block 10, South Timbalier Area, Revised, Terrebonne Parish, Louisiana**

The beds and bottoms of all water bodies belonging to the State of Louisiana located in Block 10, South Timbalier Area, Revised, together with any present lands formed by accretion to the shoreline or islands formed therein, located in Terrebonne Parish, Louisiana, owned by and not presently under mineral lease as of December 8, 2004, from the State of Louisiana, the geographical area of which is more fully described as follows: Beginning at a point on the North line of Block 10, South Timbalier Area, Revised having Coordinates of X = 2,242,289.88 and Y = 141,553.53; thence South 8,916.31 feet to a point having Coordinates of X = 2,242,289.88 and Y = 132,637.22; thence Southwesterly on a straight line to a point on the West line of said Block 10 having Coordinates of X = 2,233,246.02 and Y = 130,429.96; thence North 11,123.57 feet along the West line of said Block 10 to its Northwest corner having Coordinates of X = 2,233,246.02 and Y = 141,553.53; thence East 9,043.86 feet along the North line of said Block 10 to the point of beginning, containing approximately **2,080.32 acres, LESS AND EXCEPT** that portion thereof, if any, lying seaward of the line three nautical miles from the coast line of Louisiana, as said three mile line has been decreed by the Supreme Court of the United States, as determined by a Special Master appointed therein, in litigation styled **United States v. State of Louisiana et al No. 9 Original**, in 1975, all as more particularly outlined on a plat in the Office of Mineral Resources, Department of Natural Resources. All bearings, distances and coordinates are based on the Louisiana Coordinate System of 1927, (South Zone).

NOTE: The above description of the Tract nominated for lease has been provided and corrected, where required, exclusively by the nomination party. Any mineral lease selected from this Tract and awarded by the Louisiana State Mineral Board shall be without warranty of any kind, either express, implied, or statutory, including, but not limited to, the implied warranties of merchantability and fitness for a particular purpose. Should the mineral lease awarded by the Louisiana State Mineral Board be subsequently modified, cancelled or abrogated due to the existence of conflicting leases, operating agreements, private claims or other future obligations or conditions which may affect all or any portion of the leased Tract, it shall not relieve the Lessee of the obligation to pay any bonus due thereon to the Louisiana State Mineral Board, nor shall the Louisiana State Mineral Board be obligated to refund any consideration paid by the Lessor prior to such modification, cancellation, or abrogation, including, but not limited to, bonuses, rentals and royalties.

NOTE: The State of Louisiana does hereby reserve, and this lease shall be subject to, the imprescriptible right of surface use in the nature of a servitude in favor of the Department of Natural Resources, including its Offices and Commissions, for the sole purpose of implementing, constructing, servicing and maintaining approved coastal zone management and/or restoration projects. Utilization of any and all rights derived

under this lease by the mineral lessee, its agents, successors or assigns, shall not interfere with nor hinder the reasonable surface use by the Department of Natural Resources, its Offices or Commissions, as herein above reserved.

NOTE: It appears, according to our records, that a portion of this Tract is located within the restrictive safety fairway area as set out by the Corps of Engineers, U.S. Army and/or the restrictive anchorage area as set out by the U.S. Coast Guard.

Applicant: Harold J. Anderson, Inc.

Bidder	Cash Payment	Price/Acre	Rental	Oil	Gas	Other



TERREBONNE PARISH

SOUTH TIMBALIER AREA, REVISED

P.O.B.  
X=2,242,289.88  
Y=141,553.53

BLOCK ST0121

BLOCK ST0120

BLOCK ST0119

BLOCK ST0010

BLOCK ST0009

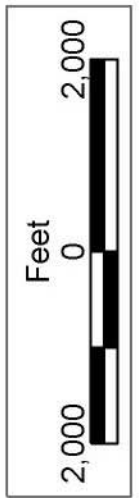
LA

US

SL 15307

SL 18005

SL 16944



**TRACT 36938 - Portion of Block 10, South Timbalier Area, Revised, Terrebonne Parish, Louisiana**

The beds and bottoms of all water bodies belonging to the State of Louisiana located in Block 10, South Timbalier Area, Revised, together with any present lands formed by accretion to the shoreline or islands formed therein, located in Terrebonne Parish, Louisiana, owned by and not presently under mineral lease as of December 8, 2004, from the State of Louisiana, the geographical area of which is more fully described as follows: Beginning at a point on the North line of Block 10, South Timbalier Area, Revised having Coordinates of X = 2,242,289.88 and Y = 141,553.53; thence East 6,556.14 feet along the North line of said Block 10 to its Northeast corner having Coordinates of X = 2,248,846.02 and Y = 141,553.53; thence South 7,316.20 feet along the East line of said Block 10 to a point having Coordinates of X = 2,248,846.02 and Y = 134,237.33; thence Southwesterly on a straight line to a point having Coordinates of X = 2,242,289.88 and Y = 132,637.22; thence North 8,916.31 feet to the point of beginning, containing approximately **1,221.56 acres, LESS AND EXCEPT** that portion thereof, if any, lying seaward of the line three nautical miles from the coast line of Louisiana, as said three mile line has been decreed by the Supreme Court of the United States, as determined by a Special Master appointed therein, in litigation styled **United States v. State of Louisiana et al No. 9 Original**, in 1975, all as more particularly outlined on a plat in the Office of Mineral Resources, Department of Natural Resources. All bearings, distances and coordinates are based on the Louisiana Coordinate System of 1927, (South Zone).

NOTE: The above description of the Tract nominated for lease has been provided and corrected, where required, exclusively by the nomination party. Any mineral lease selected from this Tract and awarded by the Louisiana State Mineral Board shall be without warranty of any kind, either express, implied, or statutory, including, but not limited to, the implied warranties of merchantability and fitness for a particular purpose. Should the mineral lease awarded by the Louisiana State Mineral Board be subsequently modified, cancelled or abrogated due to the existence of conflicting leases, operating agreements, private claims or other future obligations or conditions which may affect all or any portion of the leased Tract, it shall not relieve the Lessee of the obligation to pay any bonus due thereon to the Louisiana State Mineral Board, nor shall the Louisiana State Mineral Board be obligated to refund any consideration paid by the Lessor prior to such modification, cancellation, or abrogation, including, but not limited to, bonuses, rentals and royalties.

NOTE: The State of Louisiana does hereby reserve, and this lease shall be subject to, the imprescriptible right of surface use in the nature of a servitude in favor of the Department of Natural Resources, including its Offices and Commissions, for the sole purpose of implementing, constructing, servicing and maintaining approved coastal zone management and/or restoration projects. Utilization of any and all rights derived under this lease by the mineral lessee, its agents, successors or assigns,

shall not interfere with nor hinder the reasonable surface use by the Department of Natural Resources, its Offices or Commissions, as herein above reserved.

NOTE: It appears, according to our records, that a portion of this Tract is located within the restrictive safety fairway area as set out by the Corps of Engineers, U.S. Army and/or the restrictive anchorage area as set out by the U.S. Coast Guard.

Applicant: Harold J. Anderson, Inc.

Bidder	Cash Payment	Price/Acre	Rental	Oil	Gas	Other



SL 17700

SL 2986

BLOCK ST0011

TERREBONNE PARISH

BLOCK ST0121

P.O.B.  
X=2,242,289.88  
Y=141,553.53

SOUTH TIMBALIER AREA, REVISED

BLOCK ST0120

BLOCK ST0010

LA

US



**TRACT 36939 - Portion of Blocks 43, and 67, Ship Shoal Area, Terrebonne Parish, Louisiana**

The beds and bottoms of all water bodies belonging to the State of Louisiana located in Blocks 43, and 67, Ship Shoal Area, together with any present lands formed by accretion to the shoreline or islands formed therein, located in Terrebonne Parish, Louisiana, owned by and not presently under mineral lease as of December 8, 2004, from the State of Louisiana, the geographical area of which is more fully described as follows: Beginning at a point within Block 67, Ship Shoal Area having Coordinates of X = 2,184,607.00 and Y = 128,722.58; thence West 4,950.26 feet to a point having Coordinates of X = 2,179,656.74 and Y = 128,722.58; thence North 1,474.86 feet to a point on the North line of said Block 67, also being a point on the South line of Block 47 having Coordinates of X = 2,179,656.74 and Y = 130,197.44; thence North 5,492.04 feet to a point having Coordinates of X = 2,179,656.74 and Y = 135,689.48; thence Easterly in a straight line to a point having Coordinates of X = 2,179,937.00 and Y = 135,695.00; thence Southeasterly in a straight line to the Northwest corner of State Lease No. 17189 having Coordinates of X = 2,180,645.00 and Y = 135,457.00; thence South 41 degrees 37 minutes 38 seconds West 745.17 feet along the West line of said State Lease No. 17189 to its Southwest corner, also being the Northwest corner of State Lease No. 16558 having Coordinates of X = 2,180,150.00 and Y = 134,900.00; thence South 4,702.56 feet along the West line of said State Lease No. 16558 to its Southwest corner, also being a point on the South line of said Block 43, and a point on the North line of said Block 67, having Coordinates of X = 2,180,150.00 and Y = 130,197.44; thence East 4,457.00 feet along said Block lines and the South line of said State Lease No. 16558 to its Southeast corner having Coordinates of X = 2,184,607.00 and Y = 130,197.44; thence South 1,474.86 feet to the point of beginning, containing approximately **233.78 acres**, all as more particularly outlined on a plat on file in the Office of Mineral Resources, Department of Natural Resources. All bearings, distances and coordinates are based on Louisiana Coordinate System of 1927, (North or South Zone).

NOTE: The above description of the Tract nominated for lease has been provided and corrected, where required, exclusively by the nomination party. Any mineral lease selected from this Tract and awarded by the Louisiana State Mineral Board shall be without warranty of any kind, either express, implied, or statutory, including, but not limited to, the implied warranties of merchantability and fitness for a particular purpose. Should the mineral lease awarded by the Louisiana State Mineral Board be subsequently modified, cancelled or abrogated due to the existence of conflicting leases, operating agreements, private claims or other future obligations or conditions which may affect all or any portion of the leased Tract, it shall not relieve the Lessee of the obligation to pay any bonus due thereon to the Louisiana State Mineral Board, nor shall the Louisiana State Mineral Board be obligated to refund any consideration paid by the Lessor prior to such modification, cancellation, or abrogation, including, but not limited to, bonuses, rentals and royalties.

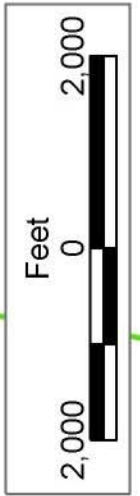
NOTE: The State of Louisiana does hereby reserve, and this lease shall be subject to, the imprescriptible right of surface use in the nature of a servitude in favor of the Department of Natural Resources, including its Offices and Commissions, for the sole purpose of implementing, constructing, servicing and maintaining approved coastal zone management and/or restoration projects. Utilization of any and all rights derived under this lease by the mineral lessee, its agents, successors or assigns, shall not interfere with nor hinder the reasonable surface use by the Department of Natural Resources, its Offices or Commissions, as herein above reserved.

NOTE: The Department of Wildlife and Fisheries has designated certain areas in the coastal waters of the State of Louisiana as Oyster Seed Bed Areas. The exact location of those Seed Bed Areas must be obtained from the Department of Wildlife and Fisheries and any work done under a mineral lease from the State of Louisiana may necessarily be conducted in conformity with the rules and regulations promulgated by the said Department of Wildlife and Fisheries for Oyster Seed Bed Areas.

Applicant: The Louisiana Land And Exploration Company

Bidder	Cash Payment	Price/Acre	Rental	Oil	Gas	Other





TERREBONNE PARISH

SOUTH TIMBALIER AREA, REVISED

BLOCK ST0007

BLOCK PL0001

SOUTH PELTO AREA

SL 15071

BLOCK SS0043

BLOCK SS0067

SHIP SHOAL AREA

P.O.B.  
X=2,184,607.00  
Y=128,722.58

SL 17189

SL 16558

SL 17308

SL 17309

SL 17604

SL 17596

SL 17190