

TRACT 35923 - Richland Parish School Board and Morehouse Parish School Board - Morehouse and Richland Parishes, Louisiana

The State Mineral Board acting on behalf of the Richland Parish School Board and Morehouse Parish School Board, pursuant to Resolution(s) adopted by that (those) body(ies) and in accordance with Louisiana Revised Statutes 30:121-136 and 151-156, as amended, and Article XIV, Section 16(A)(9) and (B) of the Louisiana Constitution of 1974, as same may be continued and promulgated in proper statutory form and, further, amended from time to time, advertises the lands not under mineral lease on December 10, 2003, excluding the beds and bottoms of all navigable water bodies located within the following: All of Section 9 and 16 and 21, Township 19 North, Range 8 East in Morehouse and Richland Parishes, Louisiana, All of Section 16, Township 19 North, Range 8 East said section being situated in Morehouse and Richland Parishes, Louisiana excluding the beds and bottoms of all navigable water bodies located in said section containing approximately **585.96 acres**, Richland and Morehouse Parishes, Louisiana, all as more particularly outlined on a plat on file in the Office of Mineral Resources, Department of Natural Resources. All bearings, distances and coordinates are based on Louisiana Coordinate System of 1927, (North or South Zone).

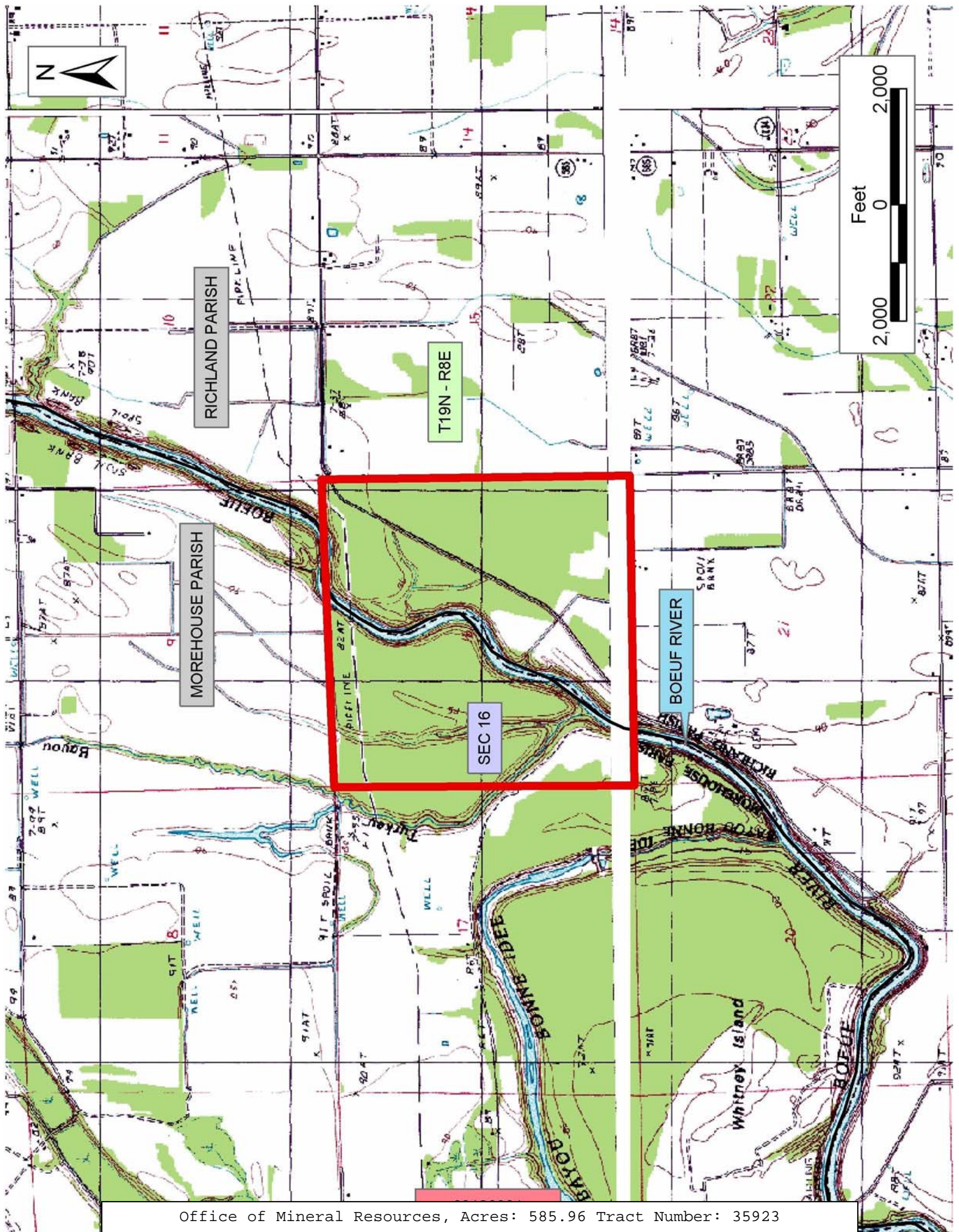
NOTE: The above description of the Tract nominated for lease has been provided and corrected, where required, exclusively by the nomination party. Any mineral lease selected from this Tract and awarded by the Louisiana State Mineral Board shall be without warranty of any kind, either express, implied, or statutory, including, but not limited to, the implied warranties of merchantability and fitness for a particular purpose. Should the mineral lease awarded by the Louisiana State Mineral Board be subsequently modified, cancelled or abrogated due to the existence of conflicting leases, operating agreements, private claims or other future obligations or conditions which may affect all or any portion of the leased Tract, it shall not relieve the Lessee of the obligation to pay any bonus due thereon to the Louisiana State Mineral Board, nor shall the Louisiana State Mineral Board be obligated to refund any consideration paid by the Lessor prior to such modification, cancellation, or abrogation, including, but not limited to, bonuses, rentals and royalties.

NOTE: Lessors acknowledge that said Township 19 North, Range 8 East (is located 29.30% in Morehouse Parish and 70.70% in Richland Parish, and Lessee is authorized and directed to pay any and all rentals and royalties which may accrue under the terms of this lease to Lessors separately and respectively in the following proportions: Richland Parish School Board - 70.70% and Morehouse Parish School Board 29.30%, and further, prospective bidders are hereby placed on notice that execution by the State Mineral Board of oil, gas and mineral leases on behalf of the Richland Parish School Board and Morehouse Parish School Board as above set forth on the above described Section 16 shall not be construed as a waiver by the State Mineral Board of any rights that it may have to lease for and on behalf of

the State of Louisiana any navigable water bottoms that might be included within said Section 16.

Applicant: Roger Adams to Agency and by Resolution from the Richland Parish School Board authorizing the Mineral Board to act in its behalf

Bidder	Cash Payment	Price/ Acre	Rental	Oil	Gas	Other



TRACT 35924 - Webster Parish, Louisiana

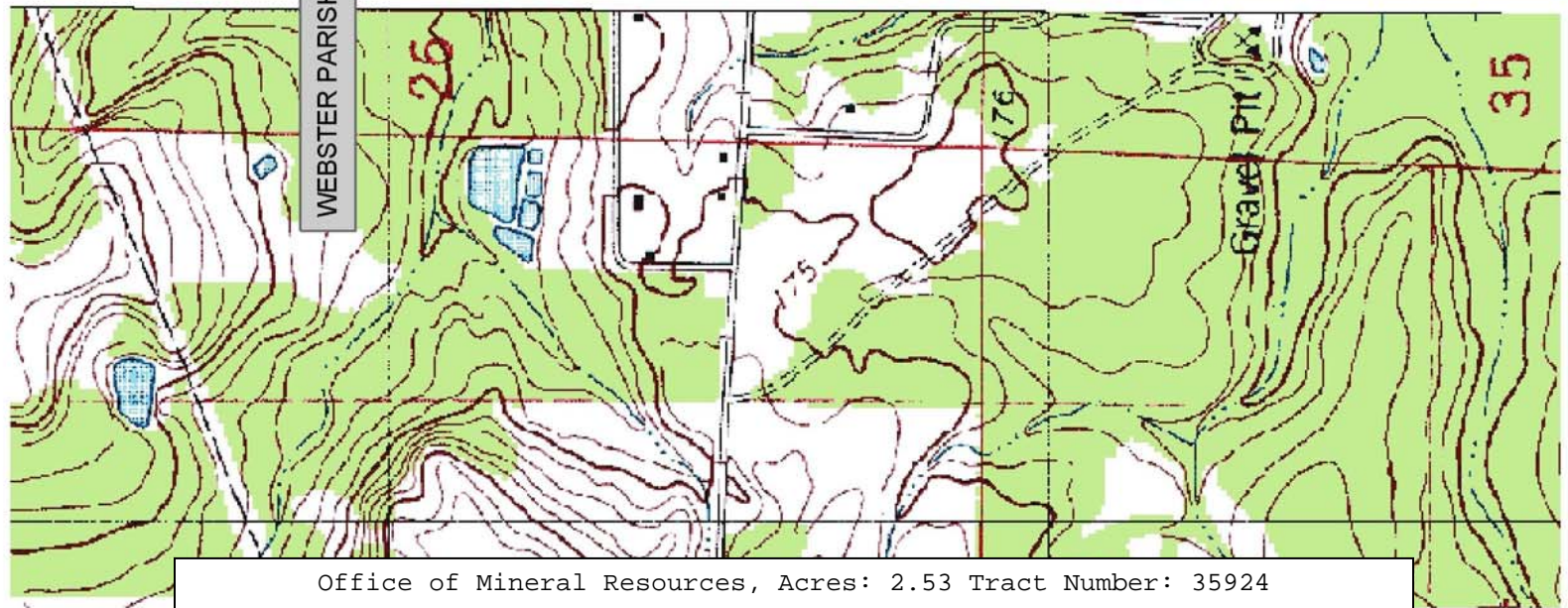
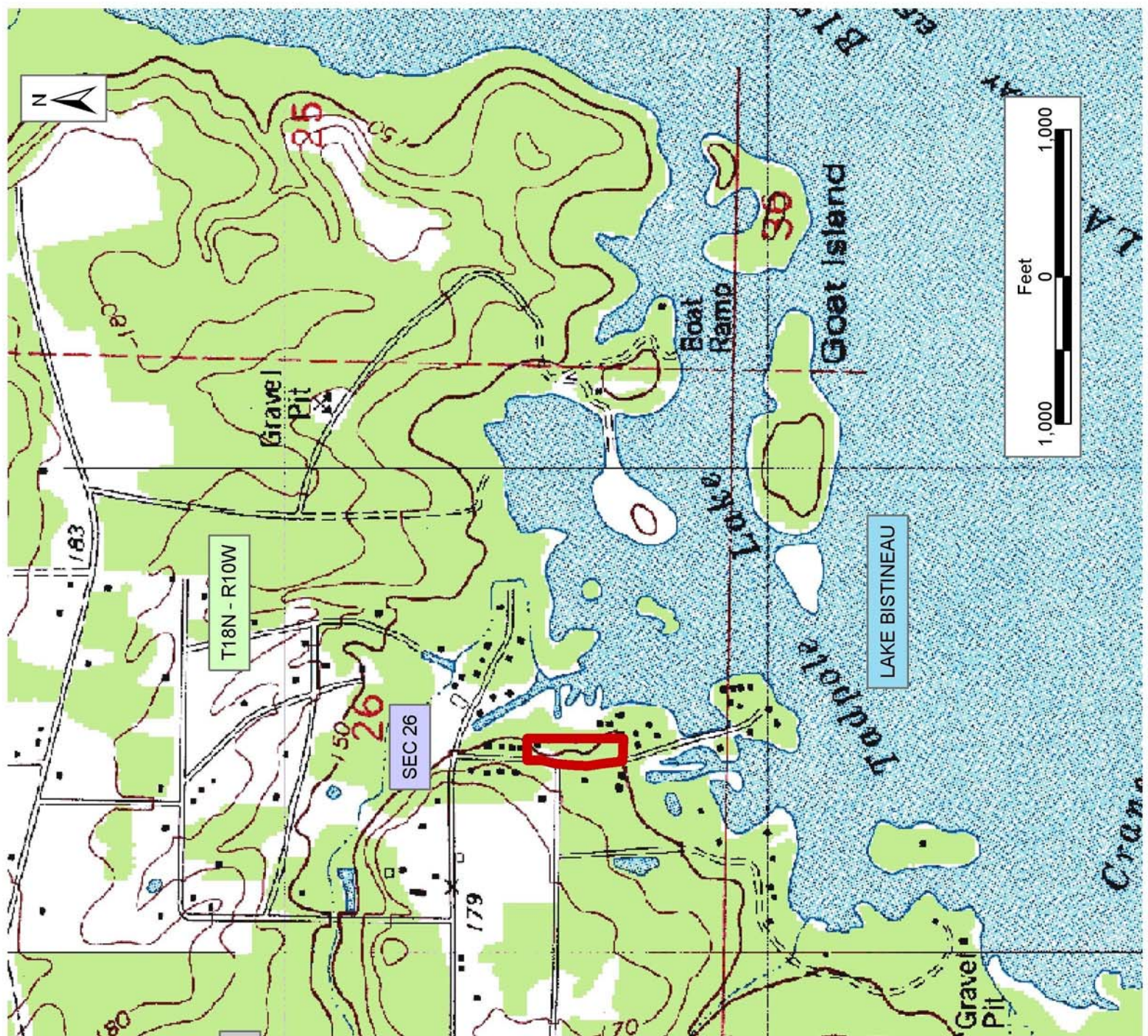
A certain Tract of land, excluding the beds and bottoms of all navigable waters, belonging to and not presently under mineral lease from Louisiana Department Of Wildlife And Fisheries on December 10, 2003, being more fully described as follows: The following is the description of a Louisiana Wildlife and Fisheries Commission tract of land acquired from Cora Hurst by deed dated July 7, 1975, recorded in Conveyance Book 450, page 374, Registry No. 252240, records of Webster Parish, Louisiana: A tract of land located in the SE/4 of SW/4 of Section 26, Township 18 North, Range 10 West, Webster Parish, Louisiana, more specifically described as follows: Beginning at an iron pipe set by H. Hardeman as being 230 feet East and 350 feet South of Northeast corner of SE/4 of the SW/4, Section 26, Township 18 North-Range 10 West; thence run North 350 feet, thence run West 230 feet; thence run South 27 feet to the Point of Beginning; run thence South 600 feet; run thence West 100 feet; run thence North 24 degrees 57 minutes West 237.02 feet; run thence North 400 feet; run thence South 85 degrees 44 minutes East 200.56 feet to the point of beginning, containing approximately **2.53 acres**, all as more particularly outlined on a plat on file in the Office of Mineral Resources, Department of Natural Resources. The description is based on information provided by the State Agency regarding location and ownership of surface and mineral rights. All distances, bearing and coordinates, if applicable, are based on the Louisiana Coordinate System of 1927, (North or South Zone).

NOTE: The above description of the Tract nominated for lease has been provided and corrected, where required, exclusively by the nomination party. Any mineral lease selected from this Tract and awarded by the Louisiana State Mineral Board shall be without warranty of any kind, either express, implied, or statutory, including, but not limited to, the implied warranties of merchantability and fitness for a particular purpose. Should the mineral lease awarded by the Louisiana State Mineral Board be subsequently modified, cancelled or abrogated due to the existence of conflicting leases, operating agreements, private claims or other future obligations or conditions which may affect all or any portion of the leased Tract, it shall not relieve the Lessee of the obligation to pay any bonus due thereon to the Louisiana State Mineral Board, nor shall the Louisiana State Mineral Board be obligated to refund any consideration paid by the Lessor prior to such modification, cancellation, or abrogation, including, but not limited to, bonuses, rentals and royalties.

NOTE: The Department of Wildlife and Fisheries will require a minimum bonus of \$150 per acre and a minimum royalty of 25%.

Applicant: Hershel Floyd, Jr. to Agency and by Resolution from the Louisiana Department Of Wildlife And Fisheries authorizing the Mineral Board to act in its behalf

Bidder	Cash Payment	Price/ Acre	Rental	Oil	Gas	Other



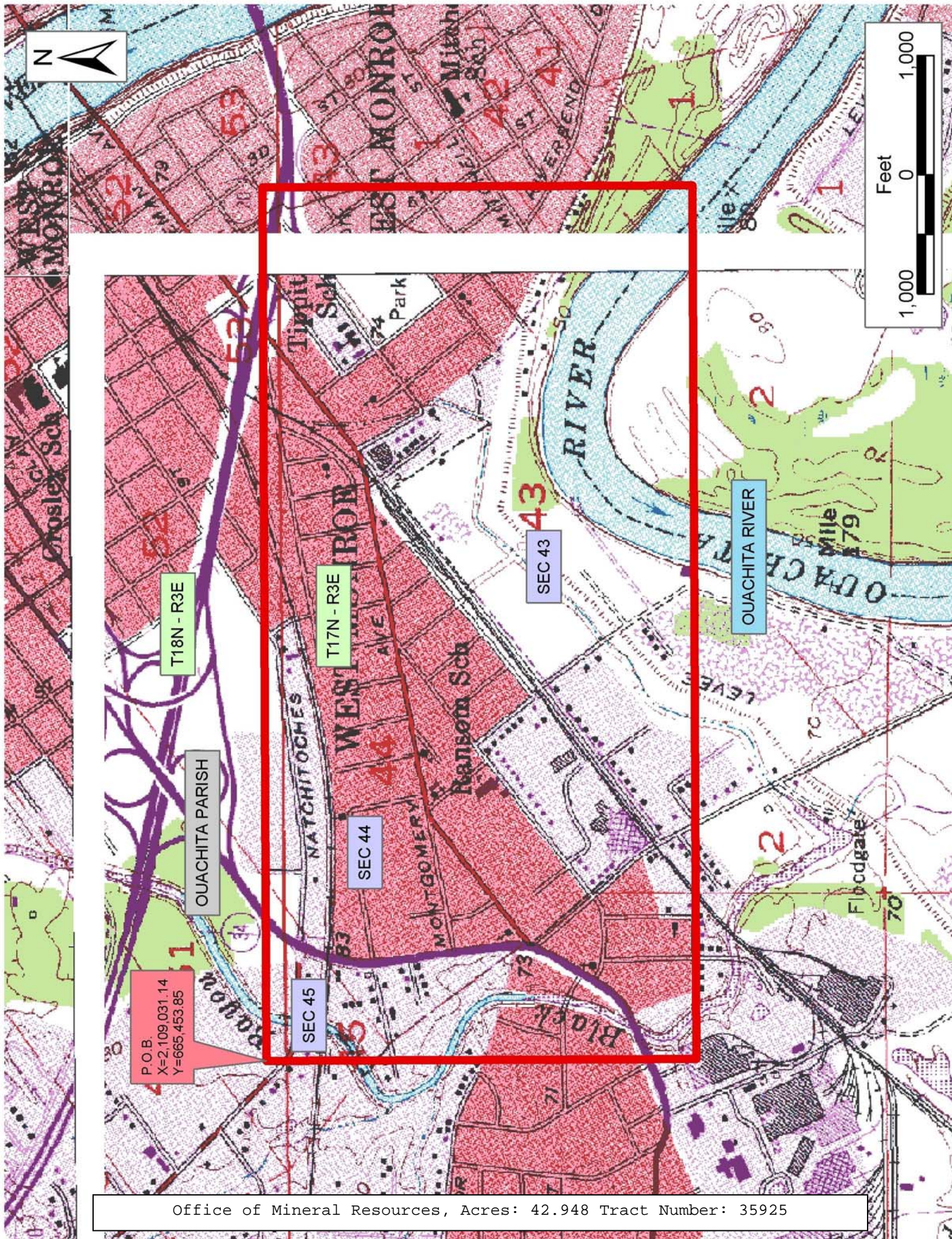
TRACT 35925 - Ouachita Parish, Louisiana

A certain Tract of land, excluding the beds and bottoms of all navigable waters, belonging to and not presently under mineral lease from City Of West Monroe on December 10, 2003, being more fully described as follows: All streets, roads, alleys and other easements belonging to the City of West Monroe by dedication, or otherwise, located in Sections 43, 44 and 45, Township 17 North, Range 3 East, Ouachita Parish, Louisiana, excluding beds and bottoms of all navigable waters and being located within the following described tract: Beginning at a point having Coordinates of X = 2,109,031.14 and Y = 665,453.85; thence East 7,327.27 feet to a point having Coordinates of X = 2,116,358.42 and Y = 665,453.85; thence South 3,606.16 feet to a point having Coordinates of X = 2,116,358.42 and Y = 661,847.68; thence West 7,327.27 feet to a point having Coordinates of X = 2,109,031.14 and Y = 661,847.68; thence North 3,606.16 feet to the point of beginning, containing approximately **42.948 acres**, all as more particularly outlined on a plat on file in the Office of Mineral Resources, Department of Natural Resources. The description is based on information provided by the State Agency regarding location and ownership of surface and mineral rights. All distances, bearing and coordinates, if applicable, are based on the Louisiana Coordinate System of 1927, (North or South Zone).

NOTE: The above description of the Tract nominated for lease has been provided and corrected, where required, exclusively by the nomination party. Any mineral lease selected from this Tract and awarded by the Louisiana State Mineral Board shall be without warranty of any kind, either express, implied, or statutory, including, but not limited to, the implied warranties of merchantability and fitness for a particular purpose. Should the mineral lease awarded by the Louisiana State Mineral Board be subsequently modified, cancelled or abrogated due to the existence of conflicting leases, operating agreements, private claims or other future obligations or conditions which may affect all or any portion of the leased Tract, it shall not relieve the Lessee of the obligation to pay any bonus due thereon to the Louisiana State Mineral Board, nor shall the Louisiana State Mineral Board be obligated to refund any consideration paid by the Lessor prior to such modification, cancellation, or abrogation, including, but not limited to, bonuses, rentals and royalties.

Applicant: State Mineral Board to Agency and by Resolution from the City Of West Monroe authorizing the Mineral Board to act in its behalf

Bidder	Cash Payment	Price/ Acre	Rental	Oil	Gas	Other



TRACT 35926 - East Baton Rouge Parish, Louisiana

A certain Tract of land, excluding the beds and bottoms of all navigable waters, belonging to and not presently under mineral lease from the Metropolitan Council of the Parish of East Baton Rouge and City of Baton Rouge on December 10, 2003, being more fully described as follows: a portion of Ligon Road situated in Sections 62, 67, and 68, of Township 4 South and Range 1 West, East Baton Rouge Parish, beginning at Point 001: S84°50' West 33.91 feet to Point 002: S78°36'30" West 41.50 feet to Point 003: S62°13' West 42.52 feet to Point 004: S50°57' West 68.37 feet to Point 005: following the arc of the curve to the right 593.09 feet to Point 006: N77°15' East 271.55 feet to Point 007: following the arc of the curve to the left 500.17 feet to Point 008: S55°07'49" East 20.0 feet to Point 009: S34°15' West 444.0 feet to Point 010: N21°03' West 77.15 feet to Point 011: S83°20'15" West 0.12 feet to Point 12: following the arc of the curve to the right 120.43 feet to Point 013: S77°15' West 271.55 feet to Point 14: following the arc of the curve to the left 391.92 feet to Point 15: S29°44'16" East 0.54 feet to the point of beginning, containing approximately **2.102 acres**. This tract being further described as being out of and a part of a called 4.715 acres, being taken from portions of Sections 62, 67 and 68, T4S, R1W of the Parish of East Baton Rouge, State of Louisiana, as described in that certain Deed dated July 27, 1967, between Donald S. Mills and the Parish of East Baton Rouge, filed as ORIG 73, BNDL 6541, in the Office of the Clerk and Recorder of East Baton Rouge Parish and this tract is also known as the remaining acreage left from said tract described in that certain Cash Sale from City of Baton Rouge, a municipal corporation of the State of Louisiana and Parish of East Baton Rouge, a political subdivision of the State of Louisiana to The Recreation & Park Commission for the Parish of East Baton Rouge, a political subdivision of the State of Louisiana, dated August 11, 1971, filed as ORIG 23, BNDL 7681, in the Office of the Clerk, all as more particularly outlined on a plat on file in the Office of Mineral Resources, Department of Natural Resources. The description is based on information provided by the State Agency regarding location and ownership of surface and mineral rights. All distances, bearing and coordinates, if applicable, are based on the Louisiana Coordinate System of 1927, (North or South Zone).

NOTE: The above description of the Tract nominated for lease has been provided and corrected, where required, exclusively by the nomination party. Any mineral lease selected from this Tract and awarded by the Louisiana State Mineral Board shall be without warranty of any kind, either express, implied, or statutory, including, but not limited to, the implied warranties of merchantability and fitness for a particular purpose. Should the mineral lease awarded by the Louisiana State Mineral Board be subsequently modified, cancelled or abrogated due to the existence of conflicting leases, operating agreements, private claims or other future obligations or conditions which may affect all or any portion of the leased Tract, it shall not relieve the Lessee of the obligation to

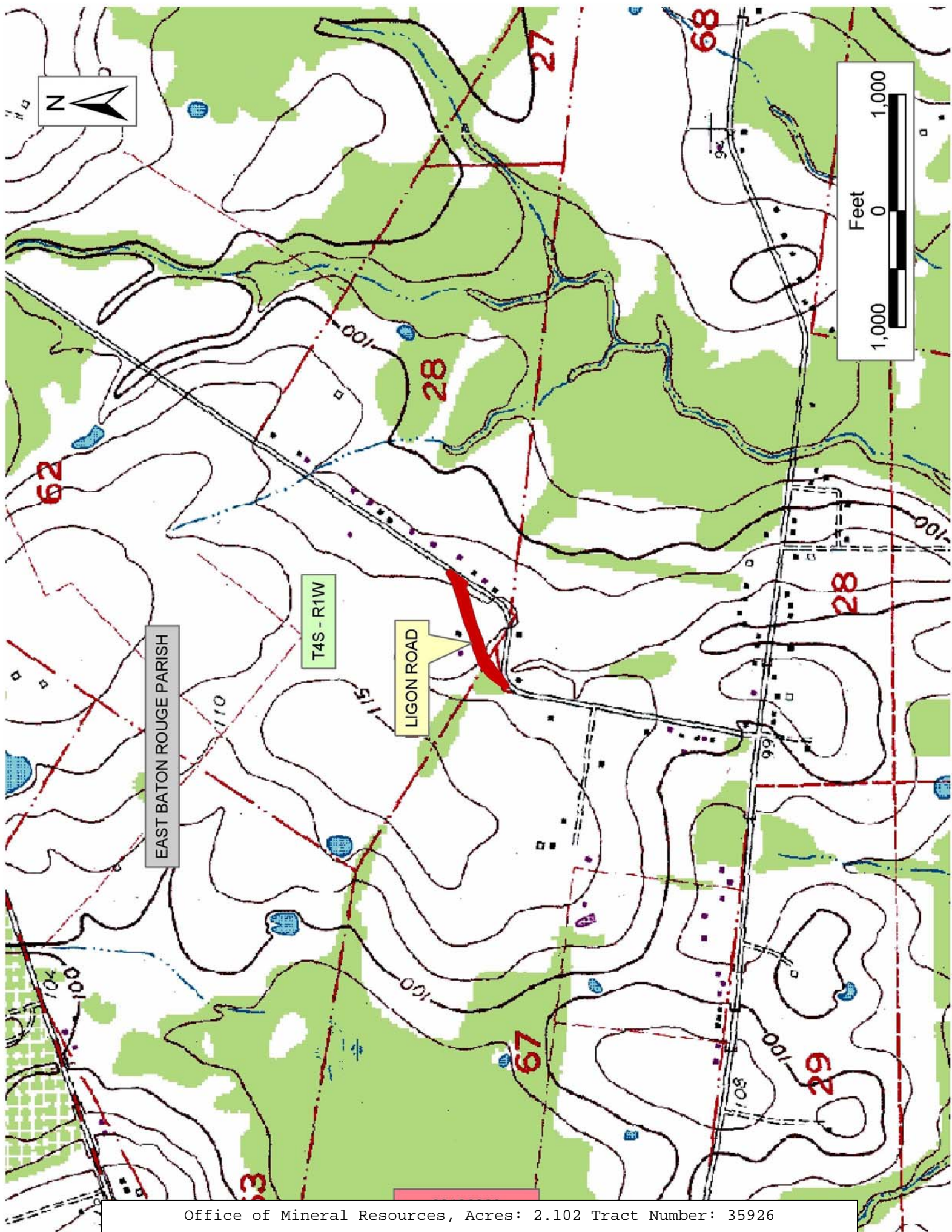
pay any bonus due thereon to the Louisiana State Mineral Board, nor shall the Louisiana State Mineral Board be obligated to refund any consideration paid by the Lessor prior to such modification, cancellation, or abrogation, including, but not limited to, bonuses, rentals and royalties.

NOTE: "No portion bid will be accepted on this tract."

NOTE: No on-site drilling or other related activities may be conducted on the surface of the property being leased.

Applicant: Metropolitan Council Of The Parish Of East Baton Rouge And City Of Baton Rouge to Agency and by Resolution from the Metropolitan Council Of The Parish Of East Baton Rouge And City of Baton Rouge authorizing the Mineral Board to act in its behalf

Bidder	Cash Payment	Price/ Acre	Rental	Oil	Gas	Other



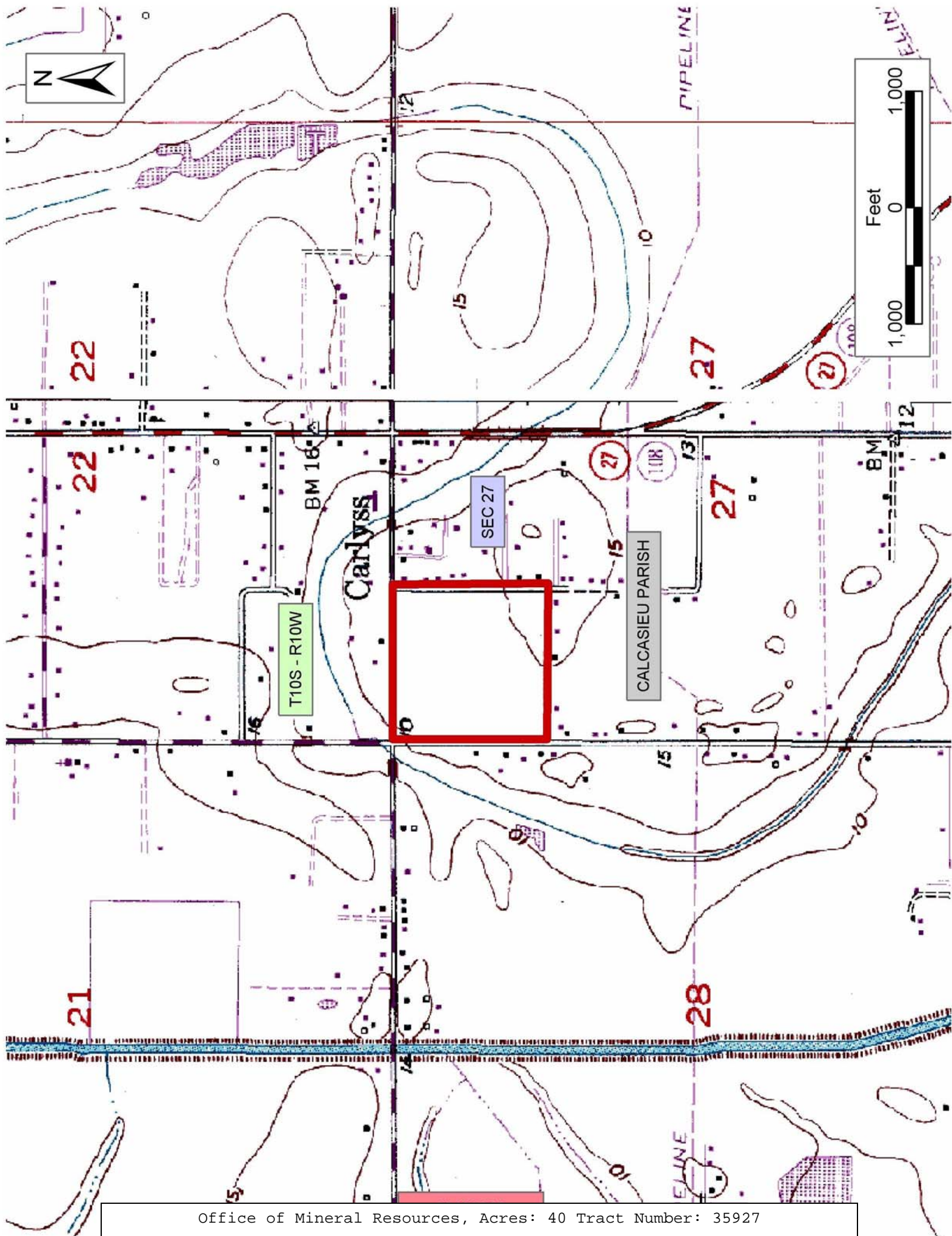
TRACT 35927 - Calcasieu Parish, Louisiana

A certain Tract of land, excluding the beds and bottoms of all navigable waters, belonging to and not presently under mineral lease from Calcasieu Parish School Board on December 10, 2003, being more fully described as follows: that certain tract or parcel of land containing approximately **40.00 acres**, being the Northwest Quarter of the Northwest Quarter (NW/4 of NW/4) of Section 27, Township 10 South, Range 10 West, Calcasieu Parish, Louisiana, also being the same property acquired by the Calcasieu Parish School Board in that certain Cash Sale from Paul Lisso Mineral Company, Inc., dated August 19, 1968, recorded in COB 1049, Page 122, under File No. 1111607 of the Conveyance Records of Calcasieu Parish, Louisiana, all as more particularly outlined on a plat on file in the Office of Mineral Resources, Department of Natural Resources. The description is based on information provided by the State Agency regarding location and ownership of surface and mineral rights. All distances, bearing and coordinates, if applicable, are based on the Louisiana Coordinate System of 1927, (North or South Zone).

NOTE: The above description of the Tract nominated for lease has been provided and corrected, where required, exclusively by the nomination party. Any mineral lease selected from this Tract and awarded by the Louisiana State Mineral Board shall be without warranty of any kind, either express, implied, or statutory, including, but not limited to, the implied warranties of merchantability and fitness for a particular purpose. Should the mineral lease awarded by the Louisiana State Mineral Board be subsequently modified, cancelled or abrogated due to the existence of conflicting leases, operating agreements, private claims or other future obligations or conditions which may affect all or any portion of the leased Tract, it shall not relieve the Lessee of the obligation to pay any bonus due thereon to the Louisiana State Mineral Board, nor shall the Louisiana State Mineral Board be obligated to refund any consideration paid by the Lessor prior to such modification, cancellation, or abrogation, including, but not limited to, bonuses, rentals and royalties.

Applicant: G. Matthew David, Cpl & Associates, Ltd. to Agency and by Resolution from the Calcasieu Parish School Board authorizing the Mineral Board to act in its behalf

Bidder	Cash Payment	Price/ Acre	Rental	Oil	Gas	Other



TRACT 35928 - St. Mary Parish, Louisiana

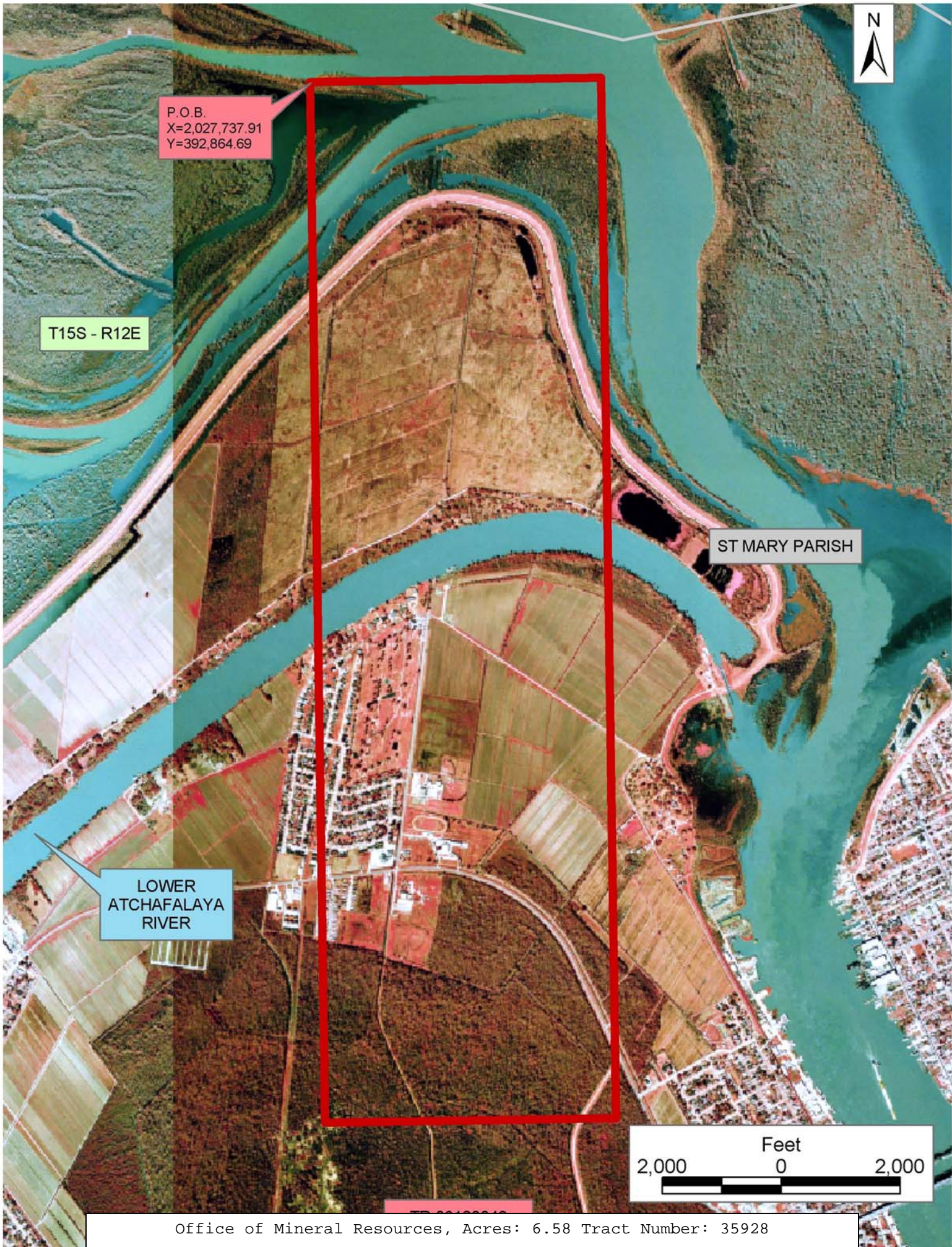
A certain Tract of land, excluding the beds and bottoms of all navigable waters, belonging to and not presently under mineral lease from Louisiana Department Of Transportation And Development on December 10, 2003, situated within the following described tract: Beginning at a point having Coordinates of X = 2,027,737.91 and Y = 392,864.69; thence East 4,895.54 feet to a point having Coordinates of X = 2,032,633.45 and Y = 392,864.69; thence South 17,519.85 feet to a point having Coordinates of X = 2,032,633.45 and Y = 375,344.84; thence West 4,895.54 feet to a point having Coordinates of X = 2,027,737.91 and Y = 375,344.84; thence North 17,519.85 to the point of beginning, containing approximately **6.58 acres**, all as more particularly outlined on a plat on file in the Office of Mineral Resources, Department of Natural Resources. The description is based on information provided by the State Agency regarding location and ownership of surface and mineral rights. All distances, bearing and coordinates, if applicable, are based on the Louisiana Coordinate System of 1927, (North or South Zone).

NOTE: The above description of the Tract nominated for lease has been provided and corrected, where required, exclusively by the nomination party. Any mineral lease selected from this Tract and awarded by the Louisiana State Mineral Board shall be without warranty of any kind, either express, implied, or statutory, including, but not limited to, the implied warranties of merchantability and fitness for a particular purpose. Should the mineral lease awarded by the Louisiana State Mineral Board be subsequently modified, cancelled or abrogated due to the existence of conflicting leases, operating agreements, private claims or other future obligations or conditions which may affect all or any portion of the leased Tract, it shall not relieve the Lessee of the obligation to pay any bonus due thereon to the Louisiana State Mineral Board, nor shall the Louisiana State Mineral Board be obligated to refund any consideration paid by the Lessor prior to such modification, cancellation, or abrogation, including, but not limited to, bonuses, rentals and royalties.

NOTE: The State of Louisiana does hereby reserve, and this lease shall be subject to, the imprescriptible right of surface use in the nature of a servitude in favor of the Department of Natural Resources, including its Offices and Commissions, for the sole purpose of implementing, constructing, servicing and maintaining approved coastal zone management and/or restoration projects. Utilization of any and all rights derived under this lease by the mineral lessee, its agents, successors or assigns, shall not interfere with nor hinder the reasonable surface use by the Department of Natural Resources, its Offices or Commissions, as herein above reserved.

Applicant: Chris Roy to Agency and by Resolution from the Louisiana Department Of Transportation And Development authorizing the Mineral Board to act in its behalf

Bidder	Cash Payment	Price/ Acre	Rental	Oil	Gas	Other



TRACT 35929 - St. Mary Parish, Louisiana

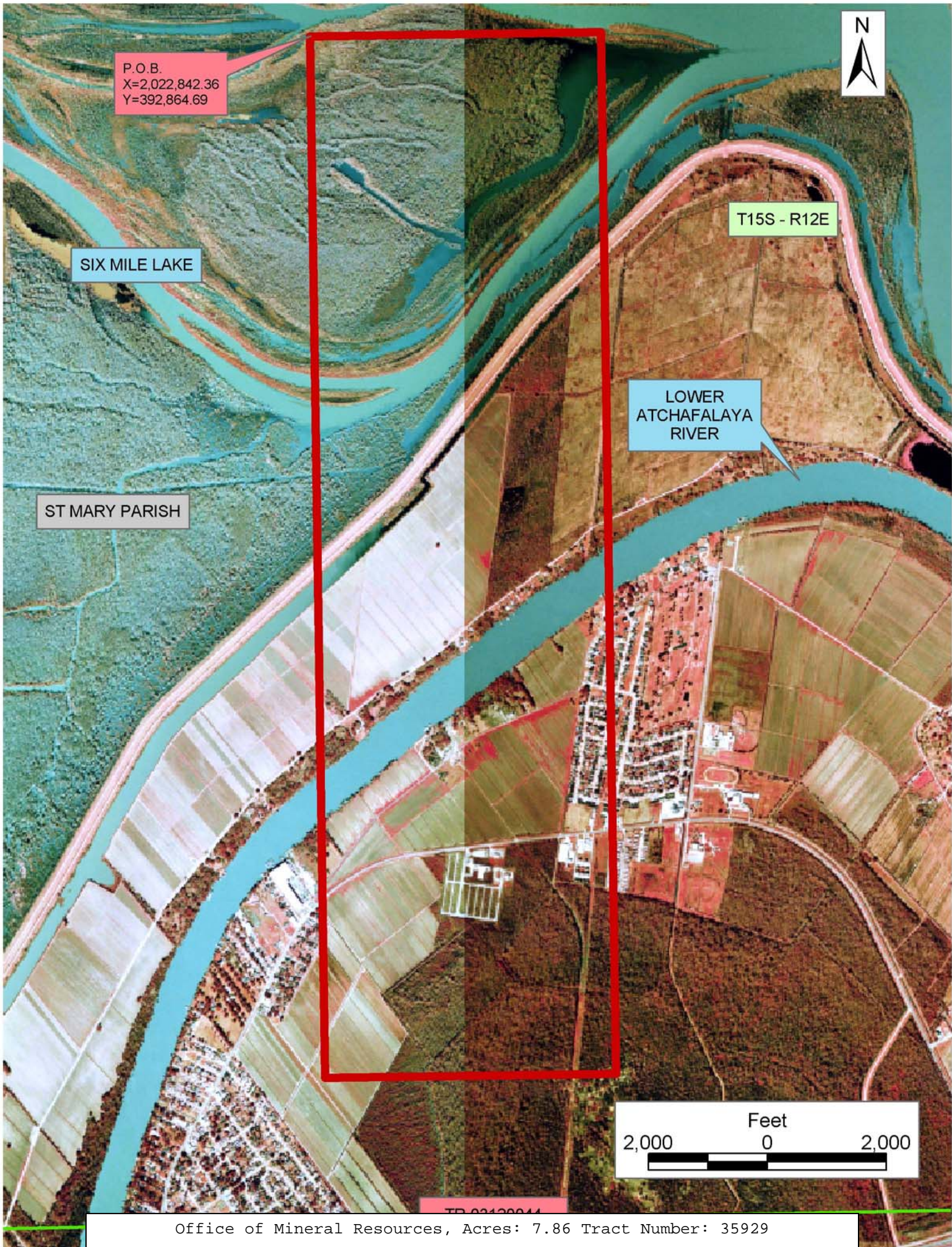
A certain Tract of land, excluding the beds and bottoms of all navigable waters, belonging to and not presently under mineral lease from Louisiana Department Of Transportation And Development on December 10, 2003, situated within the following described tract: Beginning at a point having Coordinates of X = 2,022,842.36 and Y = 392,864.69; thence East 4,895.55 feet to a point having Coordinates of X = 2,027,737.91 and Y = 392,864.69; thence South 17,519.85 feet to a point having Coordinates of X = 2,027,737.91 and Y = 375,344.84; thence West 4,895.55 feet to a point having Coordinates of X = 2,022,842.36 and Y = 375,344.84; thence North 17,519.85 to the point of beginning, containing approximately **7.86 acres**, all as more particularly outlined on a plat on file in the Office of Mineral Resources, Department of Natural Resources. The description is based on information provided by the State Agency regarding location and ownership of surface and mineral rights. All distances, bearing and coordinates, if applicable, are based on the Louisiana Coordinate System of 1927, (North or South Zone).

NOTE: The above description of the Tract nominated for lease has been provided and corrected, where required, exclusively by the nomination party. Any mineral lease selected from this Tract and awarded by the Louisiana State Mineral Board shall be without warranty of any kind, either express, implied, or statutory, including, but not limited to, the implied warranties of merchantability and fitness for a particular purpose. Should the mineral lease awarded by the Louisiana State Mineral Board be subsequently modified, cancelled or abrogated due to the existence of conflicting leases, operating agreements, private claims or other future obligations or conditions which may affect all or any portion of the leased Tract, it shall not relieve the Lessee of the obligation to pay any bonus due thereon to the Louisiana State Mineral Board, nor shall the Louisiana State Mineral Board be obligated to refund any consideration paid by the Lessor prior to such modification, cancellation, or abrogation, including, but not limited to, bonuses, rentals and royalties.

NOTE: The State of Louisiana does hereby reserve, and this lease shall be subject to, the imprescriptible right of surface use in the nature of a servitude in favor of the Department of Natural Resources, including its Offices and Commissions, for the sole purpose of implementing, constructing, servicing and maintaining approved coastal zone management and/or restoration projects. Utilization of any and all rights derived under this lease by the mineral lessee, its agents, successors or assigns, shall not interfere with nor hinder the reasonable surface use by the Department of Natural Resources, its Offices or Commissions, as herein above reserved.

Applicant: Chris Roy to Agency and by Resolution from the Louisiana Department Of Transportation And Development authorizing the Mineral Board to act in its behalf

Bidder	Cash Payment	Price/ Acre	Rental	Oil	Gas	Other



P.O.B.
X=2,022,842.36
Y=392,864.69

SIX MILE LAKE

T15S - R12E

LOWER
ATCHAFALAYA
RIVER

ST MARY PARISH

