

TRACT 35931 - Cameron Parish, Louisiana

A portion of all State owned lands, including high and marsh lands and land now or formerly constituting the beds and bottoms of any water body, within the boundaries of the Rockefeller Wildlife Refuge and Game Preserve, not presently under mineral lease by the State of Louisiana on December 10, 2003, situated in Cameron Parish, Louisiana, and described as follows: Beginning at a point having Coordinates of X = 1,545,383.46 and Y = 353,874.37; thence North 00 degrees 41 minutes 55 seconds East 10,560.91 feet to a point having Coordinates of X = 1,545,512.23 and Y = 364,434.49; thence South 89 degrees 16 minutes 14 seconds East 8,522.51 feet to a point on the Western boundary of State Lease No. 2340, as amended, having Coordinates of X = 1,554,034.05 and Y = 364,326.01; thence along the said Western boundary of State Lease No. 2340, the following courses: Southerly, Southwesterly, Southerly and Southeasterly to a point on its Western boundary having Coordinates of X = 1,554,761.72 and Y = 353,756.00; thence North 89 degrees 16 minutes 37 seconds West 9,379.01 feet to the point of beginning, containing approximately **1,936.42 acres**, all as more particularly outlined on a plat on file in the Office of Mineral Resources, Department of Natural Resources. All bearings, distances and coordinates are based on Louisiana Coordinate System of 1927, (South Zone).

NOTE: The above description of the Tract nominated for lease has been provided and corrected, where required, exclusively by the nomination party. Any mineral lease selected from this Tract and awarded by the Louisiana State Mineral Board shall be without warranty of any kind, either express, implied, or statutory, including, but not limited to, the implied warranties of merchantability and fitness for a particular purpose. Should the mineral lease awarded by the Louisiana State Mineral Board be subsequently modified, cancelled or abrogated due to the existence of conflicting leases, operating agreements, private claims or other future obligations or conditions which may affect all or any portion of the leased Tract, it shall not relieve the Lessee of the obligation to pay any bonus due thereon to the Louisiana State Mineral Board, nor shall the Louisiana State Mineral Board be obligated to refund any consideration paid by the Lessor prior to such modification, cancellation, or abrogation, including, but not limited to, bonuses, rentals and royalties.

NOTE: The mineral lease is located in the Rockefeller Wildlife Refuge under the jurisdiction of the Louisiana Department of Wildlife and Fisheries which has promulgated rules and regulations for the protection of game and wildlife on the aforesaid Tract and, therefore, shall be subject to said rules and regulations, a copy of which shall be attached to the mineral lease. In addition to the specific rules and regulations applicable, the following shall apply regarding operations under this mineral lease:

1. Compliance with the Rockefeller mineral regulations shall be required.

2. No surface activities will be allowed in the vicinity of the Headquarters and associated facilities without written authorization from the Department.
3. Board road access will be required when feasible as determined by the Department.
4. In the event that board road access is not feasible, existing canals and waterways will be utilized to access proposed well locations. A maximum of 350 feet of new canal dredging will be allowed for individual well locations.
5. Compensatory mitigation will be required for unavoidable wetland losses.
6. No discharges will be allowed, including produced waters and drilling fluids. A containerized closed loop system will be required.
7. Seasonal restrictions may be imposed within specific management units dependent upon wildlife population levels.

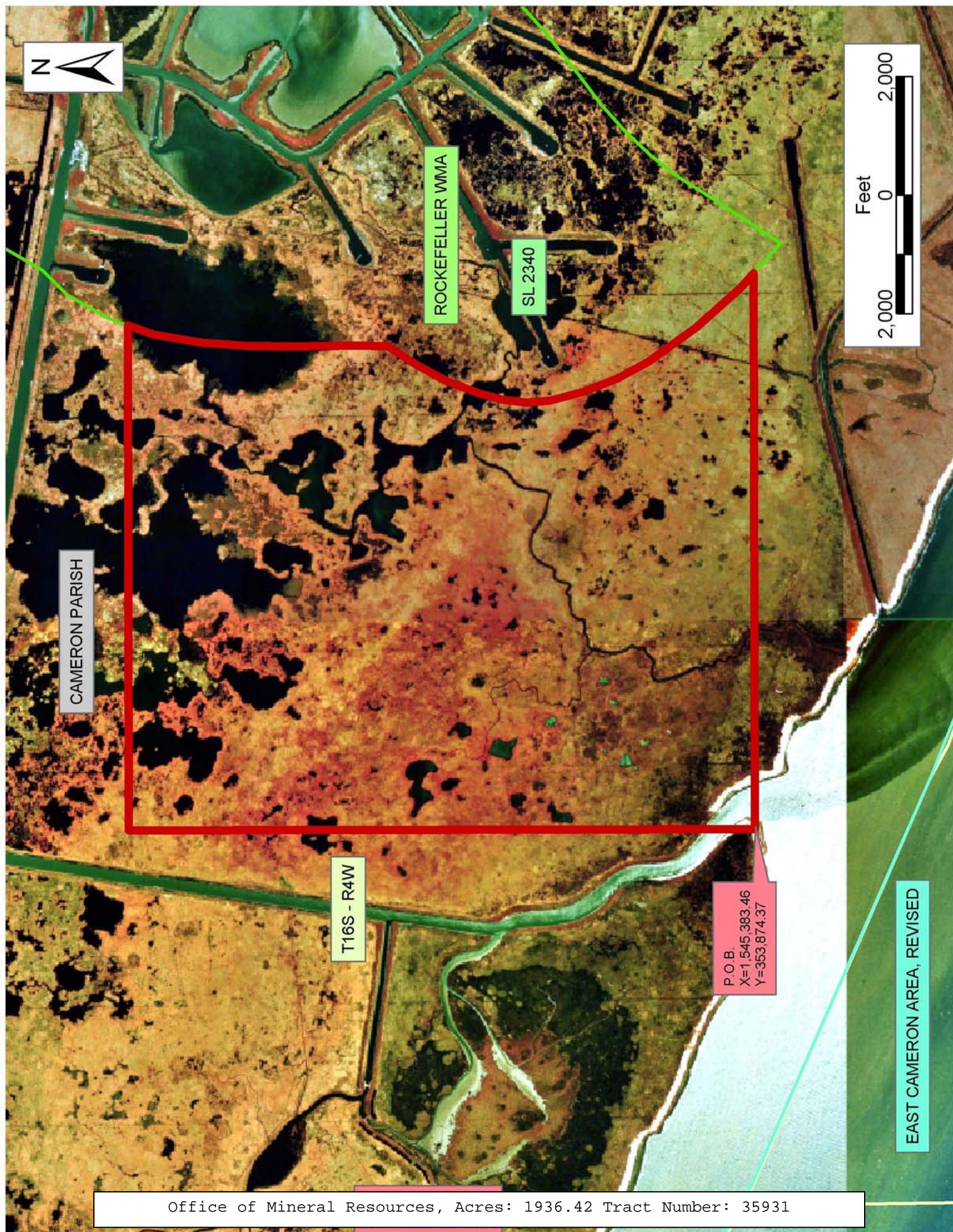
NOTE: A minimum bonus of \$350.00 per acre and a minimum royalty of 25% will be required.

NOTE: Prior to submitting applications for wetland permits to Federal and State permitting agencies, the leaseholder shall coordinate project details with the Department of Wildlife and Fisheries. Contact person for the Department will be Mike Windham at (504) 568-5886.

NOTE: The State of Louisiana does hereby reserve, and this lease shall be subject to, the imprescriptible right of surface use in the nature of a servitude in favor of the Department of Natural Resources, including its Offices and Commissions, for the sole purpose of implementing, constructing, servicing and maintaining approved coastal zone management and/or restoration projects. Utilization of any and all rights derived under this lease by the mineral lessee, its agents, successors or assigns, shall not interfere with nor hinder the reasonable surface use by the Department of Natural Resources, its Offices or Commissions, as herein above reserved.

Applicant: Stephen M. Jenkins & Associates, Inc.

Bidder	Cash Payment	Price/Acre	Rental	Oil	Gas	Other



TRACT 35932 - Cameron Parish, Louisiana

A portion of all State owned lands, including high and marsh lands and land now or formerly constituting the beds and bottoms of any water body, within the boundaries of the Rockefeller Wildlife Refuge and Game Preserve, not presently under mineral lease by the State of Louisiana on December 10, 2003, situated in Cameron Parish, Louisiana, and described as follows: Beginning at a point having Coordinates of X = 1,567,923.18 and Y = 353,589.88; thence North 89 degrees 16 minutes 37 seconds West 12,359.66 feet to a point on the Eastern boundary of State Lease No. 2340, as amended, having Coordinates of X = 1,555,564.50 and Y = 353,745.86; thence along the said Eastern boundary of State Lease No. 2340 the following courses: Northeasterly, Northwesterly, Northeasterly and North to a point on the Eastern boundary of said State Lease No. 2340, having Coordinates of X = 1,562,035.29 and Y = 364,225.06; thence South 89 degrees 16 minutes 32 seconds East 5,263.33 feet to the Southernmost Southwest corner of State Lease No. 2038, as amended, having Coordinates of X = 1,567,298.20 and Y = 364,158.51; thence South 89 degrees 16 minutes 36 seconds East 743.50 feet along the Southern boundary of said State Lease No. 2038, as amended, to its Southernmost Southeast corner having Coordinates of X = 1,568,041.64 and Y = 364,149.13; thence South 00 degrees 38 minutes 34 seconds West 10,559.91 feet to the point of beginning, containing approximately **2,102.17 acres**, all as more particularly outlined on a plat on file in the Office of Mineral Resources, Department of Natural Resources. All bearings, distances and coordinates are based on Louisiana Coordinate System of 1927, (South Zone).

NOTE: The above description of the Tract nominated for lease has been provided and corrected, where required, exclusively by the nomination party. Any mineral lease selected from this Tract and awarded by the Louisiana State Mineral Board shall be without warranty of any kind, either express, implied, or statutory, including, but not limited to, the implied warranties of merchantability and fitness for a particular purpose. Should the mineral lease awarded by the Louisiana State Mineral Board be subsequently modified, cancelled or abrogated due to the existence of conflicting leases, operating agreements, private claims or other future obligations or conditions which may affect all or any portion of the leased Tract, it shall not relieve the Lessee of the obligation to pay any bonus due thereon to the Louisiana State Mineral Board, nor shall the Louisiana State Mineral Board be obligated to refund any consideration paid by the Lessor prior to such modification, cancellation, or abrogation, including, but not limited to, bonuses, rentals and royalties.

NOTE: The mineral lease is located in the Rockefeller Wildlife Refuge under the jurisdiction of the Louisiana Department of Wildlife and Fisheries which has promulgated rules and regulations for the protection of game and wildlife on the aforesaid Tract and, therefore, shall be subject to said rules and regulations, a copy of which shall be attached to the mineral lease. In addition to the specific rules and regulations

applicable, the following shall apply regarding operations under this mineral lease:

1. Compliance with the Rockefeller mineral regulations shall be required.
2. No surface activities will be allowed in the vicinity of the Headquarters and associated facilities without written authorization from the Department.
3. Board road access will be required when feasible as determined by the Department.
4. In the event that board road access is not feasible, existing canals and waterways will be utilized to access proposed well locations. A maximum of 350 feet of new canal dredging will be allowed for individual well locations.
5. Compensatory mitigation will be required for unavoidable wetland losses.
6. No discharges will be allowed, including produced waters and drilling fluids. A containerized closed loop system will be required.
7. Seasonal restrictions may be imposed within specific management units dependent upon wildlife population levels.

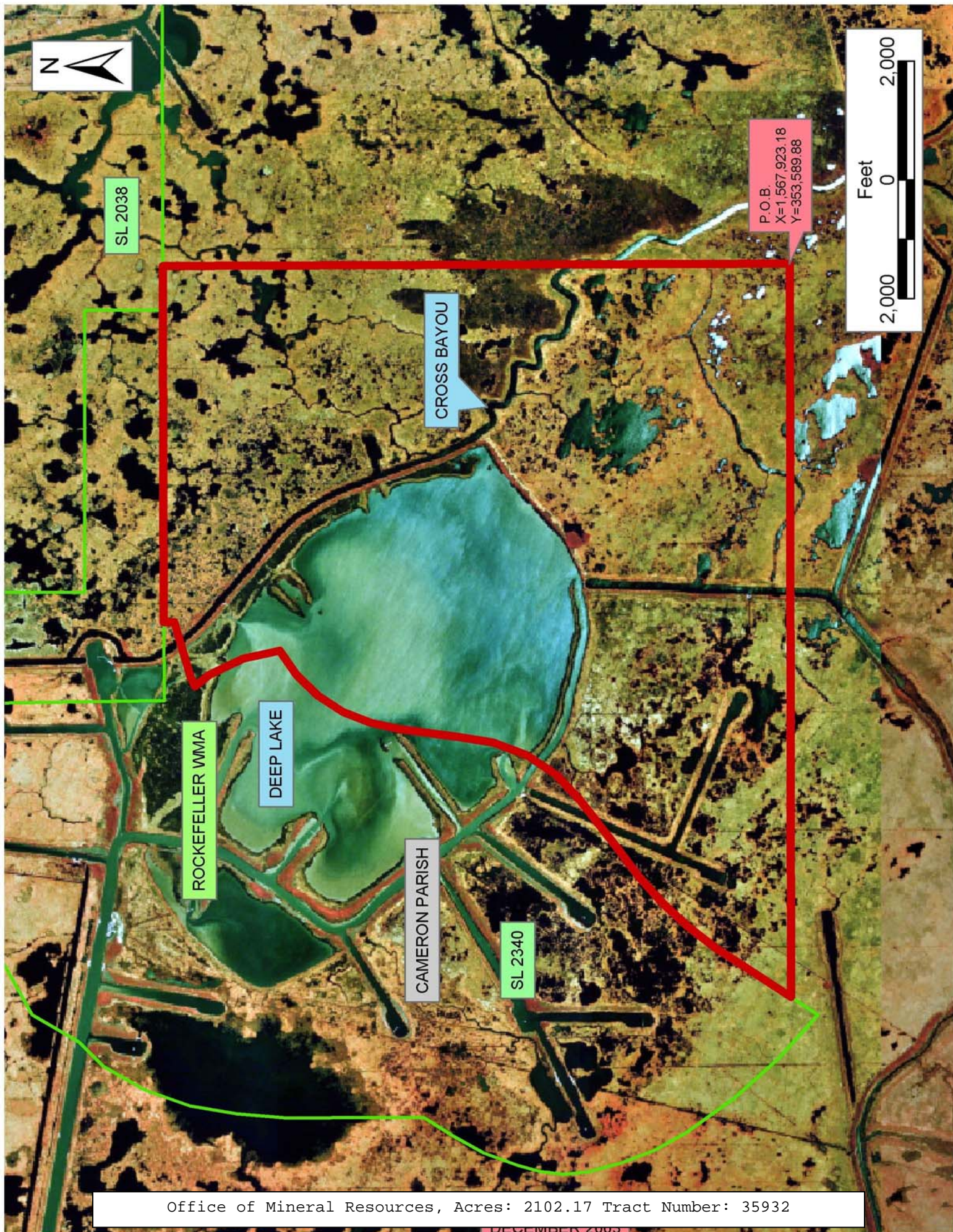
NOTE: A minimum bonus of \$350.00 per acre and a minimum royalty of 25% will be required.

NOTE: Prior to submitting applications for wetland permits to Federal and State permitting agencies, the leaseholder shall coordinate project details with the Department of Wildlife and Fisheries. Contact person for the Department will be Mike Windham at (504) 568-5886.

NOTE: The State of Louisiana does hereby reserve, and this lease shall be subject to, the imprescriptible right of surface use in the nature of a servitude in favor of the Department of Natural Resources, including its Offices and Commissions, for the sole purpose of implementing, constructing, servicing and maintaining approved coastal zone management and/or restoration projects. Utilization of any and all rights derived under this lease by the mineral lessee, its agents, successors or assigns, shall not interfere with nor hinder the reasonable surface use by the Department of Natural Resources, its Offices or Commissions, as herein above reserved.

Applicant: Stephen M. Jenkins & Associates, Inc.

Bidder	Cash Payment	Price/ Acre	Rental	Oil	Gas	Other



TRACT 35933 - Cameron Parish, Louisiana

A portion of all State owned lands, including high and marsh lands and land now or formerly constituting the beds and bottoms of any water body, within the boundaries of the Rockefeller Wildlife Refuge and Game Preserve, not presently under mineral lease by the State of Louisiana on December 10, 2003, situated in Cameron Parish, Louisiana, and described as follows: Beginning at a point having Coordinates of X = 1,545,383.46 and Y = 353,874.37; thence South 89 degrees 16 minutes 37 seconds East 9,379.01 feet to a point on the boundary of State Lease No 2340, as amended, having Coordinates of X = 1,554,761.72 and Y = 353,756.00; thence South 47 degrees 13 minutes 33 seconds East 678.82 feet along the boundary of said State Lease No 2340, to a point having Coordinates of X = 1,555,260.00 and Y = 353,295.01; thence North 34 degrees 02 minutes 04 seconds East 544.05 feet along the boundary of said State Lease No 2340, to a point having Coordinates of X = 1,555,564.50 and Y = 353,745.86; thence South 89 degrees 16 minutes 37 seconds East 515.07 feet to a point having Coordinates of X = 1,556,079.53 and Y = 353,739.36; thence South 00 degrees 40 minutes 15 seconds West approximately 5,384 feet to a point on the present day shoreline of the Gulf of Mexico; thence Westerly approximately 12,613 feet along the said present day shoreline of the Gulf of Mexico to an intersection point with a line that bears South 00 degrees 41 minutes 49 seconds West from a coordinate value of X = 1,545,383.46 and Y = 353,874.37; thence North 00 degrees 41 minutes 49 seconds East approximately 137 feet to the point of beginning, containing approximately **739 acres**, all as more particularly outlined on a plat on file in the Office of Mineral Resources, Department of Natural Resources. All bearings, distances and coordinates are based on Louisiana Coordinate System of 1927, (South Zone).

NOTE: The above description of the Tract nominated for lease has been provided and corrected, where required, exclusively by the nomination party. Any mineral lease selected from this Tract and awarded by the Louisiana State Mineral Board shall be without warranty of any kind, either express, implied, or statutory, including, but not limited to, the implied warranties of merchantability and fitness for a particular purpose. Should the mineral lease awarded by the Louisiana State Mineral Board be subsequently modified, cancelled or abrogated due to the existence of conflicting leases, operating agreements, private claims or other future obligations or conditions which may affect all or any portion of the leased Tract, it shall not relieve the Lessee of the obligation to pay any bonus due thereon to the Louisiana State Mineral Board, nor shall the Louisiana State Mineral Board be obligated to refund any consideration paid by the Lessor prior to such modification, cancellation, or abrogation, including, but not limited to, bonuses, rentals and royalties.

NOTE: The mineral lease is located in the Rockefeller Wildlife Refuge under the jurisdiction of the Louisiana Department of Wildlife and Fisheries which has promulgated rules and regulations for the protection of game and wildlife on the aforesaid Tract and, therefore, shall be

subject to said rules and regulations, a copy of which shall be attached to the mineral lease. In addition to the specific rules and regulations applicable, the following shall apply regarding operations under this mineral lease:

1. Compliance with the Rockefeller mineral regulations shall be required.
2. No surface activities will be allowed in the vicinity of the Headquarters and associated facilities without written authorization from the Department.
3. Board road access will be required when feasible as determined by the Department.
4. In the event that board road access is not feasible, existing canals and waterways will be utilized to access proposed well locations. A maximum of 350 feet of new canal dredging will be allowed for individual well locations.
5. Compensatory mitigation will be required for unavoidable wetland losses.
6. No discharges will be allowed, including produced waters and drilling fluids. A containerized closed loop system will be required.
7. Seasonal restrictions may be imposed within specific management units dependent upon wildlife population levels.

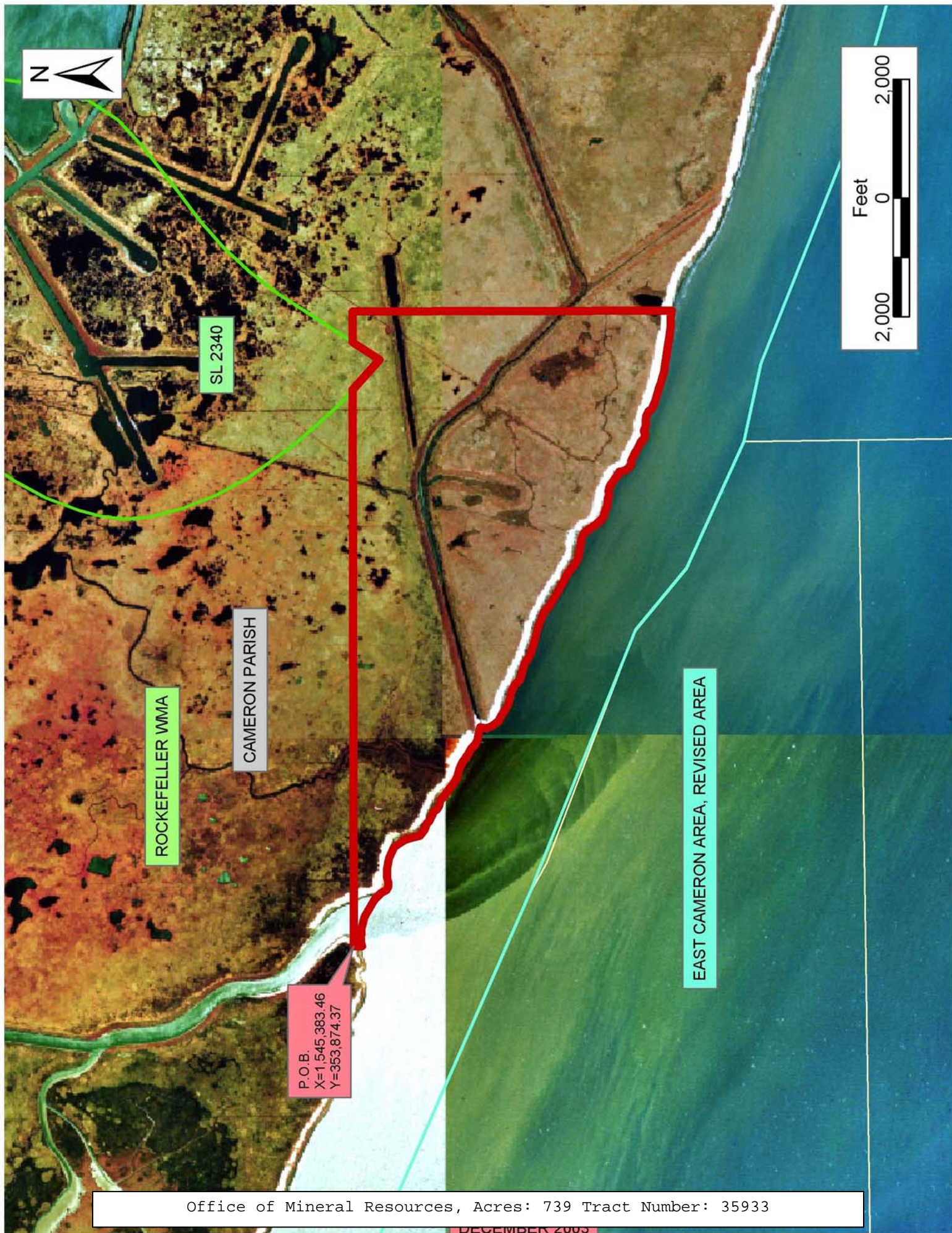
NOTE: A minimum bonus of \$350.00 per acre and a minimum royalty of 25% will be required.

NOTE: Prior to submitting applications for wetland permits to Federal and State permitting agencies, the leaseholder shall coordinate project details with the Department of Wildlife and Fisheries. Contact person for the Department will be Mike Windham at (504) 568-5886.

NOTE: The State of Louisiana does hereby reserve, and this lease shall be subject to, the imprescriptible right of surface use in the nature of a servitude in favor of the Department of Natural Resources, including its Offices and Commissions, for the sole purpose of implementing, constructing, servicing and maintaining approved coastal zone management and/or restoration projects. Utilization of any and all rights derived under this lease by the mineral lessee, its agents, successors or assigns, shall not interfere with nor hinder the reasonable surface use by the Department of Natural Resources, its Offices or Commissions, as herein above reserved.

Applicant: Stephen M. Jenkins & Associates, Inc.

Bidder	Cash Payment	Price/ Acre	Rental	Oil	Gas	Other



TRACT 35934 - Cameron Parish, Louisiana

A portion of all State owned lands, including high and marsh lands and land now or formerly constituting the beds and bottoms of any water body, within the boundaries of the Rockefeller Wildlife Refuge and Game Preserve, not presently under mineral lease by the State of Louisiana on December 10, 2003, situated in Cameron Parish, Louisiana, and described as follows: Beginning at a point having Coordinates of X = 1,567,923.18 and Y = 353,589.88; thence South 00 degrees 38 minutes 34 seconds West approximately 9,578 feet to a point on the present day shoreline of the Gulf of Mexico; thence Westerly approximately 12,737 feet along the present day shoreline of the Gulf of Mexico to an intersection point with a line that bears South 00 degrees 40 minutes 15 seconds West from a Coordinate value of X = 1,556,079.53 and Y = 353,739.36; thence North 00 degrees 40 minutes 15 seconds East approximately 5,384 feet to a point having Coordinates of X = 1,556,079.53 and Y = 353,739.36; thence South 89 degrees 16 minutes 37 seconds East 11,844.59 feet to the point of beginning, containing approximately **2,067 acres**, all as more particularly outlined on a plat on file in the Office of Mineral Resources, Department of Natural Resources. All bearings, distances and coordinates are based on Louisiana Coordinate System of 1927, (South Zone).

NOTE: The above description of the Tract nominated for lease has been provided and corrected, where required, exclusively by the nomination party. Any mineral lease selected from this Tract and awarded by the Louisiana State Mineral Board shall be without warranty of any kind, either express, implied, or statutory, including, but not limited to, the implied warranties of merchantability and fitness for a particular purpose. Should the mineral lease awarded by the Louisiana State Mineral Board be subsequently modified, cancelled or abrogated due to the existence of conflicting leases, operating agreements, private claims or other future obligations or conditions which may affect all or any portion of the leased Tract, it shall not relieve the Lessee of the obligation to pay any bonus due thereon to the Louisiana State Mineral Board, nor shall the Louisiana State Mineral Board be obligated to refund any consideration paid by the Lessor prior to such modification, cancellation, or abrogation, including, but not limited to, bonuses, rentals and royalties.

NOTE: The mineral lease is located in the Rockefeller Wildlife Refuge under the jurisdiction of the Louisiana Department of Wildlife and Fisheries which has promulgated rules and regulations for the protection of game and wildlife on the aforesaid Tract and, therefore, shall be subject to said rules and regulations, a copy of which shall be attached to the mineral lease. In addition to the specific rules and regulations applicable, the following shall apply regarding operations under this mineral lease:

1. Compliance with the Rockefeller mineral regulations shall be required.
2. No surface activities will be allowed in the vicinity of the Headquarters and associated facilities without written authorization from the Department.

3. Board road access will be required when feasible as determined by the Department.

4. In the event that board road access is not feasible, existing canals and waterways will be utilized to access proposed well locations. A maximum of 350 feet of new canal dredging will be allowed for individual well locations.

5. Compensatory mitigation will be required for unavoidable wetland losses.

6. No discharges will be allowed, including produced waters and drilling fluids. A containerized closed loop system will be required.

7. Seasonal restrictions may be imposed within specific management units dependent upon wildlife population levels.

NOTE: A minimum bonus of \$350.00 per acre and a minimum royalty of 25% will be required.

NOTE: Prior to submitting applications for wetland permits to Federal and State permitting agencies, the leaseholder shall coordinate project details with the Department of Wildlife and Fisheries. Contact person for the Department will be Mike Windham at (504) 568-5886.

NOTE: The State of Louisiana does hereby reserve, and this lease shall be subject to, the imprescriptible right of surface use in the nature of a servitude in favor of the Department of Natural Resources, including its Offices and Commissions, for the sole purpose of implementing, constructing, servicing and maintaining approved coastal zone management and/or restoration projects. Utilization of any and all rights derived under this lease by the mineral lessee, its agents, successors or assigns, shall not interfere with nor hinder the reasonable surface use by the Department of Natural Resources, its Offices or Commissions, as herein above reserved.

Applicant: Stephen M. Jenkins & Associates, Inc.

Bidder	Cash Payment	Price/ Acre	Rental	Oil	Gas	Other

