

TRACT 35862 - Portion of Block 28, Chandeleur Area, St. Bernard Parish, Louisiana

The beds and bottoms of all water bodies belonging to the State of Louisiana located in that portion of Block 28, Chandeleur Area, together with any present lands formed by accretion to the shoreline, located in St. Bernard Parish, Louisiana, and not presently under mineral lease on December 10, 2003, the geographical area of which is more fully described as follows: Beginning at the Northwest corner of Block 28, Chandeleur Area, having Coordinates of X = 2,782,850.00 and Y = 396,088.05; thence East 7,900.00 feet along the North line of said Block 28 to the most Southerly Southwest corner of State Lease No. 9680, as amended, having Coordinates of X = 2,790,750.00 and Y = 396,088.05; thence East 6,858.05 feet along the North line of said Block 28 to its Northeast corner, said corner also being the Southeast corner of said State Lease No. 9680, as amended, having Coordinates of X = 2,797,608.05 and Y = 396,088.05; thence South 4,436.34 feet along the East line of said Block 28 to a point on the Three Mile Decree line derived from the June 16, 1975 Decree in the United States vs. Louisiana No. 9 Original, having Coordinates of X = 2,797,608.05 and Y = 391,651.71; thence South 30 degrees 28 minutes 24 seconds West 3,418.99 feet along said Three Mile Decree line to a point having Coordinates of X = 2,795,874.15 and Y = 388,705.00; thence West 13,024.15 feet to a point on the West line of said Block 28 having Coordinates of X = 2,782,850.00 and Y = 388,705.00; thence North 7,383.05 feet along the West line of said Block 28 to the point of beginning, containing **2,442.72 acres, LESS AND EXCEPT** that portion thereof, if any, lying seaward of the line three nautical miles from the coast line of Louisiana, as said three mile line has been decreed by the Supreme Court of the United States, as determined by a Special Master appointed therein, in litigation styled **United States v. State of Louisiana et al No. 9 Original**, in 1975, all as more particularly outlined on a plat in the Office of Mineral Resources, Department of Natural Resources. All bearings, distances and coordinates are based on the Louisiana Coordinate System of 1927, (South Zone).

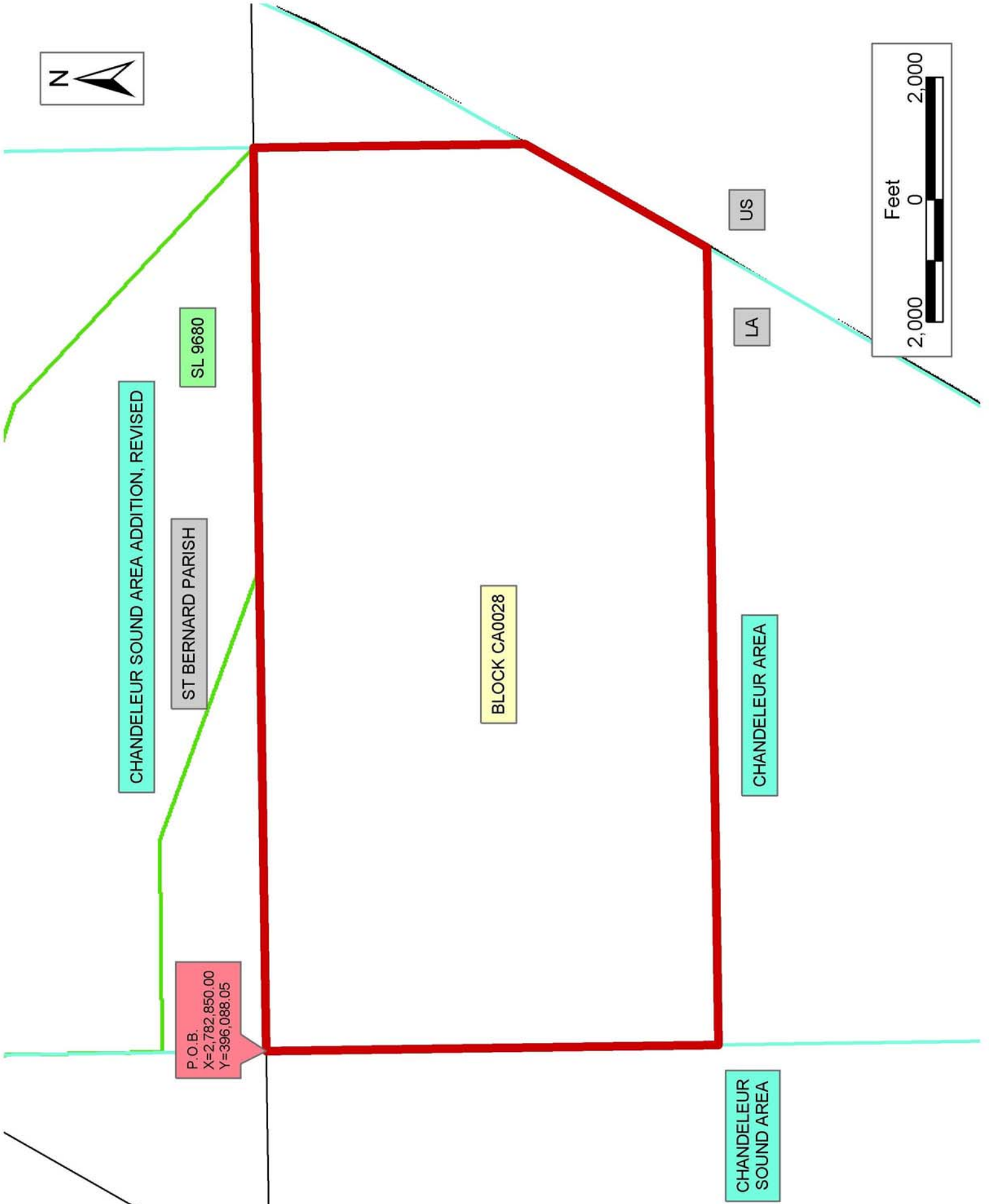
NOTE: The above description of the Tract nominated for lease has been provided and corrected, where required, exclusively by the nomination party. Any mineral lease selected from this Tract and awarded by the Louisiana State Mineral Board shall be without warranty of any kind, either express, implied, or statutory, including, but not limited to, the implied warranties of merchantability and fitness for a particular purpose. Should the mineral lease awarded by the Louisiana State Mineral Board be subsequently modified, cancelled or abrogated due to the existence of conflicting leases, operating agreements, private claims or other future obligations or conditions which may affect all or any portion of the leased Tract, it shall not relieve the Lessee of the obligation to pay any bonus due thereon to the Louisiana State Mineral Board, nor shall the Louisiana State Mineral Board be obligated to refund any consideration paid by the Lessor prior to such modification, cancellation, or abrogation, including, but not limited to, bonuses, rentals and royalties.

NOTE: The Office of Mineral Resources will require a minimum bonus of \$190 per acre and a minimum royalty of 22%.

NOTE: The State of Louisiana does hereby reserve, and this lease shall be subject to, the imprescriptible right of surface use in the nature of a servitude in favor of the Department of Natural Resources, including its Offices and Commissions, for the sole purpose of implementing, constructing, servicing and maintaining approved coastal zone management and/or restoration projects. Utilization of any and all rights derived under this lease by the mineral lessee, its agents, successors or assigns, shall not interfere with nor hinder the reasonable surface use by the Department of Natural Resources, its Offices or Commissions, as herein above reserved.

Applicant: Encaladia Petroleum, LLC

Bidder	Cash Payment	Price/Acre	Rental	Oil	Gas	Other



TRACT 35863 - Portion of Blocks 3, 4, 27 and 28, West Cameron Area, Revised, Cameron Parish, Louisiana

The beds and bottoms of all water bodies belonging to the State of Louisiana located in that portion of Blocks 3, 4, 27 and 28, West Cameron Area, Revised, together with any present lands formed by accretion to the shoreline, located in Cameron Parish, Louisiana, and not presently under mineral lease on December 10, 2003, the geographical area of which is more fully described as follows: Beginning at a point within Block 3, West Cameron Area, Revised, having Coordinates of X = 1,393,830.00 and Y = 399,565.81; thence South 3,800.81 feet to the Northwest corner of State Lease No. 17842 having Coordinates of X = 1,393,830.00 and Y = 395,765.00; thence South 1,974.76 feet along the West line of said State Lease No. 17842 to its Southwest corner, said corner also being the Northwest corner of State Lease No. 17845, having Coordinates of X = 1,393,830.00 and Y = 393,790.24; thence along the boundary of said State Lease No. 17845 the following courses: South 1,590.24 feet to a point having Coordinates of X = 1,393,830.00 and Y = 392,200.00; West 2,378.29 feet to a point on the West line of Block 28, West Cameron Area, Revised, having Coordinates of X = 1,391,451.71 and Y = 392,200.00 and South 1,260.55 feet along the West line of said Block 28 to the most Westerly Southwest corner of said State Lease No. 17845, said corner also being a point on the Three Mile Decree line derived from the June 16, 1975 Decree in the United States vs. Louisiana No. 9 Original, having Coordinates of X = 1,391,451.71 and Y = 390,939.45; thence along said Three Mile Decree line the following courses: North 86 degrees 36 minutes 37 seconds West 533.64 feet to a point having Coordinates of X = 1,390,919.00 and Y = 390,971.00; Northwesterly along an arc with a center point of X = 1,392,000.00 and Y = 409,180.00 and a radius of 18,240.60 feet to a point having Coordinates of X = 1,390,575.00 and Y = 390,995.00; South 89 degrees 42 minutes 54 seconds West 3,617.04 feet to a point having Coordinates of X = 1,386,958.00 and Y = 390,977.00; South 88 degrees 16 minutes 24 seconds West 1,161.53 feet to a point having Coordinates of X = 1,385,797.00 and Y = 390,942.00; South 80 degrees 23 minutes 24 seconds West 2,551.81 feet to a point having Coordinates of X = 1,383,281.00 and Y = 390,516.00; Southwesterly along an arc with a center point of X = 1,380,235.00 and Y = 408,500.00 and a radius of 18,240.60 feet to a point having Coordinates of X = 1,382,827.00 and Y = 390,444.00 and South 81 degrees 50 minutes 56 seconds West 1,375.90 feet to a point having Coordinates of X = 1,381,465.00 and Y = 390,248.92; thence North 3,541.32 feet to a point on the North line of Block 27, West Cameron Area, Revised, said point also being a point on the South line of Block 4, West Cameron Area, Revised, having Coordinates of X = 1,381,465.00 and Y = 393,790.24; thence North 4,004.76 feet to the Southeast corner of State Lease No. 17637 having Coordinates of X = 1,381,465.00 and Y = 397,795.00; thence North 40 degrees 53 minutes 04 seconds East 4,532.78 feet along the Eastern boundary of said State Lease No. 17637 to its Northeast corner, said corner also being the Southeast corner of State Lease No. 17635, having Coordinates of X = 1,384,431.86 and Y = 401,221.93; thence South 66 degrees 48 minutes 52 seconds East 3,962.14 feet to the most Northerly

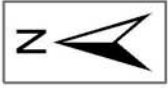
Northwest corner of State Lease No. 17636 having Coordinates of X = 1,388,074.00 and Y = 399,662.00; thence along the boundary of said State Lease No. 17636 the following courses: South 35 degrees 41 minutes 04 seconds West 2,088.05 feet to a point having Coordinates of X = 1,386,856.00 and Y = 397,966.00; South 78 degrees 27 minutes 14 seconds West 1,951.50 feet to a point having Coordinates of X = 1,384,944.00 and Y = 397,575.40; South 01 degrees 12 minutes 10 seconds East 1,000.52 feet to a point having Coordinates of X = 1,384,965.00 and Y = 396,575.10; South 51 degrees 08 minutes 58 seconds East 726.77 feet to a point having Coordinates of X = 1,385,531.00 and Y = 396,119.20; South 18 degrees 46 minutes 55 seconds West 1,080.85 feet to a point having Coordinates of X = 1,385,183.00 and Y = 395,095.90; South 41 degrees 53 minutes 28 seconds East 584.08 feet to a point having Coordinates of X = 1,385,573.00 and Y = 394,661.10; South 80 degrees 17 minutes 04 seconds East 1,413.27 feet to a point having Coordinates of X = 1,386,966.00 and Y = 394,422.60; North 61 degrees 52 minutes 53 seconds East 1,428.61 feet to a point having Coordinates of X = 1,388,226.00 and Y = 395,095.90; North 82 degrees 08 minutes 43 seconds East 2,962.80 feet to a point having Coordinates of X = 1,391,161.00 and Y = 395,500.80 and North 4,065.01 to its Northeast corner having Coordinates of X = 1,391,161.00 and Y = 399,565.81; thence East 290.71 feet to a point on the East line of said Block 4 having Coordinates of X = 1,391,451.71 and Y = 399,565.81; thence East 2,378.29 feet to the point of beginning, containing **1,939.00 acres, LESS AND EXCEPT** that portion thereof, if any, lying seaward of the line three nautical miles from the coast line of Louisiana, as said three mile line has been decreed by the Supreme Court of the United States, as determined by a Special Master appointed therein, in litigation styled **United States v. State of Louisiana et al No. 9 Original**, in 1975, all as more particularly outlined on a plat in the Office of Mineral Resources, Department of Natural Resources. All bearings, distances and coordinates are based on the Louisiana Coordinate System of 1927, (South Zone).

NOTE: The above description of the Tract nominated for lease has been provided and corrected, where required, exclusively by the nomination party. Any mineral lease selected from this Tract and awarded by the Louisiana State Mineral Board shall be without warranty of any kind, either express, implied, or statutory, including, but not limited to, the implied warranties of merchantability and fitness for a particular purpose. Should the mineral lease awarded by the Louisiana State Mineral Board be subsequently modified, cancelled or abrogated due to the existence of conflicting leases, operating agreements, private claims or other future obligations or conditions which may affect all or any portion of the leased Tract, it shall not relieve the Lessee of the obligation to pay any bonus due thereon to the Louisiana State Mineral Board, nor shall the Louisiana State Mineral Board be obligated to refund any consideration paid by the Lessor prior to such modification, cancellation, or abrogation, including, but not limited to, bonuses, rentals and royalties.

NOTE: The State of Louisiana does hereby reserve, and this lease shall be subject to, the imprescriptible right of surface use in the nature of a servitude in favor of the Department of Natural Resources, including its Offices and Commissions, for the sole purpose of implementing, constructing, servicing and maintaining approved coastal zone management and/or restoration projects. Utilization of any and all rights derived under this lease by the mineral lessee, its agents, successors or assigns, shall not interfere with nor hinder the reasonable surface use by the Department of Natural Resources, its Offices or Commissions, as herein above reserved.

Applicant: M. H. Audrey

Bidder	Cash Payment	Price/Acre	Rental	Oil	Gas	Other



WEST CAMERON AREA, REVISED

BLOCK WC0003

P.O.B.
X=1,393,830.00
Y=399,565.81

CAMERON PARISH

SL 17842

BLOCK WC0028

SL 17845

BLOCK WC0004

SL 17636

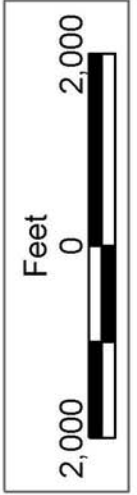
BLOCK WC0027

SL 17635

SL 17637

LA

US



TRACT 35864 - Portion of Blocks 5, and 6, Main Pass Area, Revised, St. Bernard Parish, Louisiana

The beds and bottoms of all water bodies belonging to the State of Louisiana located in that portion of Blocks 5, and 6, Main Pass Area, Revised, together with any present lands formed by accretion to the shoreline, located in St. Bernard Parish, Louisiana, and not presently under mineral lease on December 10, 2003, the geographical area of which is more fully described as follows: Beginning at a point on the South line of Block 5, Main Pass Area, Revised, said point also being on the Coastline derived from the June 16, 1975 Decree in the United States vs. Louisiana No. 9 Original, having Coordinates of X = 2,757,292.59 and Y = 366,580.00; thence along said Coastline the following courses: North 38 degrees 35 minutes 46 seconds East 276.37 feet to a point having Coordinates of X = 2,757,465.00 and Y = 366,796.00; North 30 degrees 30 minutes 11 seconds East 1,237.23 feet to a point having Coordinates of X = 2,758,093.00 and Y = 367,862.00; North 39 degrees 59 minutes 57 seconds East 4,737.26 feet to a point having Coordinates of X = 2,761,138.00 and Y = 371,491.00 and North 36 degrees 50 minutes 42 seconds East 2,604.84 feet to a point having Coordinates of X = 2,762,700.00 and Y = 373,575.54; thence East 5,400.00 feet to a point on the East line of said Block 5, said point also being point on the West line of Block 6, Main Pass Area, Revised, having Coordinates of X = 2,768,100.00 and Y = 373,575.54; thence East 2,100.00 feet to a point on the Western boundary of State Lease No. 16262 having Coordinates of X = 2,770,200.00 and Y = 373,575.54; thence South 1,616.67 feet along the Western boundary of said State Lease No. 16262 to its most Westerly Southwest corner having Coordinates of X = 2,770,200.00 and Y = 371,958.87; thence South 5,378.87 feet to a point on the South line of said Block 6 having Coordinates of X = 2,770,200.00 and Y = 366,580.00; thence West 2,100.00 feet along the South line of said Block 6 to its Southwest corner, said corner also being the Southeast corner of said Block 5, having Coordinates of X = 2,768,100.00 and Y = 366,580.00; thence West 10,807.41 feet along the South line of said Block 5 to the point of beginning, containing **1,645.63 acres**, all as more particularly outlined on a plat on file in the Office of Mineral Resources, Department of Natural Resources. All bearings, distances and coordinates are based on Louisiana Coordinate System of 1927, (North or South Zone).

NOTE: The above description of the Tract nominated for lease has been provided and corrected, where required, exclusively by the nomination party. Any mineral lease selected from this Tract and awarded by the Louisiana State Mineral Board shall be without warranty of any kind, either express, implied, or statutory, including, but not limited to, the implied warranties of merchantability and fitness for a particular purpose. Should the mineral lease awarded by the Louisiana State Mineral Board be subsequently modified, cancelled or abrogated due to the existence of conflicting leases, operating agreements, private claims or other future obligations or conditions which may affect all or any portion of the leased Tract, it shall not relieve the Lessee of the obligation to

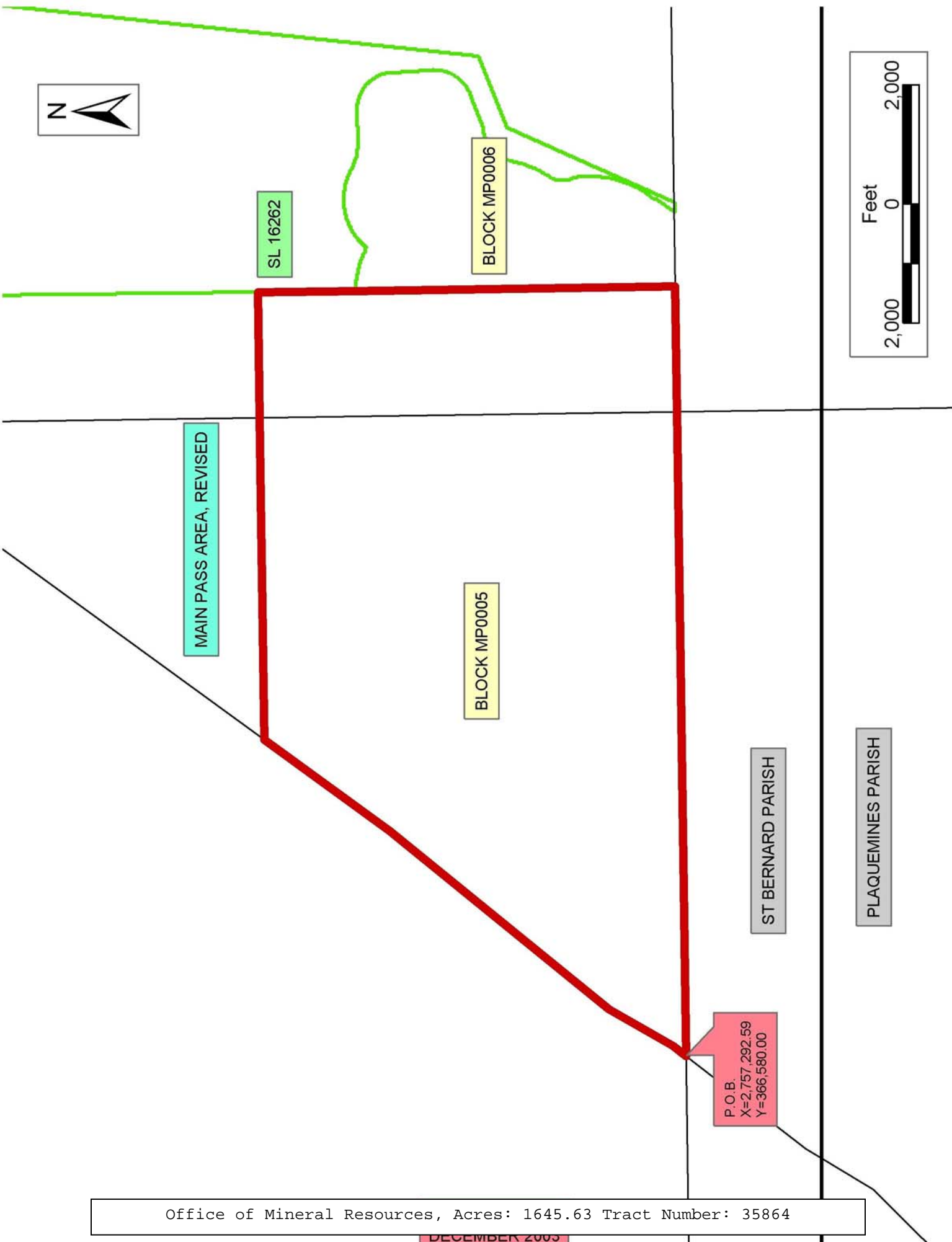
pay any bonus due thereon to the Louisiana State Mineral Board, nor shall the Louisiana State Mineral Board be obligated to refund any consideration paid by the Lessor prior to such modification, cancellation, or abrogation, including, but not limited to, bonuses, rentals and royalties.

NOTE: The Office of Mineral Resources will require a minimum bonus of \$190 per acre and a minimum royalty of 22%.

NOTE: The State of Louisiana does hereby reserve, and this lease shall be subject to, the imprescriptible right of surface use in the nature of a servitude in favor of the Department of Natural Resources, including its Offices and Commissions, for the sole purpose of implementing, constructing, servicing and maintaining approved coastal zone management and/or restoration projects. Utilization of any and all rights derived under this lease by the mineral lessee, its agents, successors or assigns, shall not interfere with nor hinder the reasonable surface use by the Department of Natural Resources, its Offices or Commissions, as herein above reserved.

Applicant: Encaladia Petroleum, LLC

Bidder	Cash Payment	Price/Acre	Rental	Oil	Gas	Other



Office of Mineral Resources, Acres: 1645.63 Tract Number: 35864

TRACT 35865 - Portion of Block 6, Vermilion Area, Revised, Vermilion Parish, Louisiana

The beds and bottoms of all water bodies belonging to the State of Louisiana located in that portion of Block 6, Vermilion Area, Revised, together with any present lands formed by accretion to the shoreline, located in Vermilion Parish, Louisiana, and not presently under mineral lease on December 10, 2003, the geographical area of which is more fully described as follows: Beginning at a point on the West Line of Block 6, Vermilion Area, Revised, having Coordinates of X = 1,662,140.22 and Y = 316,863.81; thence North 5,839.03 feet along the West Line of said Block 6 to its Northwest corner and a point on the shoreline having Coordinates of X = 1,662,140.22 and Y = 322,702.84; thence Southeasterly on a straight line to a point having Coordinates of X = 1,663,290 and Y = 322,457; thence Southeasterly on a straight line to a point having Coordinates of X = 1,665,833 and Y = 321,916; thence Southeasterly on a straight line to a point having Coordinates of X = 1,667,091 and Y = 321,595; thence Southeasterly on a straight line to a point having Coordinates of X = 1,669,012 and Y = 321,069; thence Southeasterly on a straight line to a point having Coordinates of X = 1,671,018 and Y = 320,396; thence Southeasterly on a straight line to a point having Coordinates of X = 1,675,346 and Y = 319,196; thence Southeasterly on a straight line to the Northeast corner of said Block 6 having Coordinates of X = 1,676,898.27 and Y = 318,813.64; thence South 1,949.83 feet along the East Line of said Block 6 to a point having Coordinates of X = 1,676,898.27 and Y = 316,863.81; thence West 14,758.05 feet to the Point of Beginning, containing approximately **1,345.72 acres**, all as more particularly outlined on a plat on file in the Office of Mineral Resources, Department of Natural Resources. All bearings, distances and coordinates are based on Louisiana Coordinate System of 1927, (North or South Zone).

NOTE: The above description of the Tract nominated for lease has been provided and corrected, where required, exclusively by the nomination party. Any mineral lease selected from this Tract and awarded by the Louisiana State Mineral Board shall be without warranty of any kind, either express, implied, or statutory, including, but not limited to, the implied warranties of merchantability and fitness for a particular purpose. Should the mineral lease awarded by the Louisiana State Mineral Board be subsequently modified, cancelled or abrogated due to the existence of conflicting leases, operating agreements, private claims or other future obligations or conditions which may affect all or any portion of the leased Tract, it shall not relieve the Lessee of the obligation to pay any bonus due thereon to the Louisiana State Mineral Board, nor shall the Louisiana State Mineral Board be obligated to refund any consideration paid by the Lessor prior to such modification, cancellation, or abrogation, including, but not limited to, bonuses, rentals and royalties.

NOTE: The State of Louisiana does hereby reserve, and this lease shall be subject to, the imprescriptible right of surface use in the nature of a servitude in favor of the Department of Natural Resources, including its

Offices and Commissions, for the sole purpose of implementing, constructing, servicing and maintaining approved coastal zone management and/or restoration projects. Utilization of any and all rights derived under this lease by the mineral lessee, its agents, successors or assigns, shall not interfere with nor hinder the reasonable surface use by the Department of Natural Resources, its Offices or Commissions, as herein above reserved.

Applicant: ATEC Energy Ventures, L.L.C.

Bidder	Cash Payment	Price/Acre	Rental	Oil	Gas	Other



VERMILION PARISH

S.L. 3762

BLOCK VR0005

S.L. 3763

BLOCK VR0016

BLOCK VR0007

GULF OF MEXICO

BLOCK VR0006

VERMILION AREA, REVISED

P.O.B.
X=1,662,140.22
Y=316,863.81



TRACT 35866 - Portion of Block 7, Vermilion Area, Revised, Vermilion Parish, Louisiana

The beds and bottoms of all water bodies belonging to the State of Louisiana located in that portion of Block 7, Vermilion Area, Revised, together with any present lands formed by accretion to the shoreline, located in Vermilion Parish, Louisiana, and not presently under mineral lease on December 10, 2003, the geographical area of which is more fully described as follows: Beginning at the Northeast corner of Block 7, Vermilion Area, Revised, also being the Northeast corner of State Lease No. 16672, having Coordinates of X = 1,691,656.32 and Y = 316,053.41; thence West 14,758.05 feet along the North Line of said State Lease No. 16672 to its Northwest corner, on the West line of said Block 7, having Coordinates of X = 1,676,898.27 and Y = 316,053.41; thence North 2,760.23 feet along the West Line of said Block 7 to its Northwest corner and a point on the shoreline having Coordinates of X = 1,676,898.27 and Y = 318,813.64; thence Southeasterly on a straight line to a point having Coordinates of X = 1,678,545 and Y = 318,408; thence Southeasterly on a straight line to a point having Coordinates of X = 1,687,270 and Y = 316,510; thence Southeasterly on a straight line to a point having Coordinates of X = 1,689,980 and Y = 316,170; thence Southeasterly on a straight line to the Point of Beginning, containing approximately **398.29 acres**, all as more particularly outlined on a plat on file in the Office of Mineral Resources, Department of Natural Resources. All bearings, distances and coordinates are based on Louisiana Coordinate System of 1927, (North or South Zone).

NOTE: The above description of the Tract nominated for lease has been provided and corrected, where required, exclusively by the nomination party. Any mineral lease selected from this Tract and awarded by the Louisiana State Mineral Board shall be without warranty of any kind, either express, implied, or statutory, including, but not limited to, the implied warranties of merchantability and fitness for a particular purpose. Should the mineral lease awarded by the Louisiana State Mineral Board be subsequently modified, cancelled or abrogated due to the existence of conflicting leases, operating agreements, private claims or other future obligations or conditions which may affect all or any portion of the leased Tract, it shall not relieve the Lessee of the obligation to pay any bonus due thereon to the Louisiana State Mineral Board, nor shall the Louisiana State Mineral Board be obligated to refund any consideration paid by the Lessor prior to such modification, cancellation, or abrogation, including, but not limited to, bonuses, rentals and royalties.

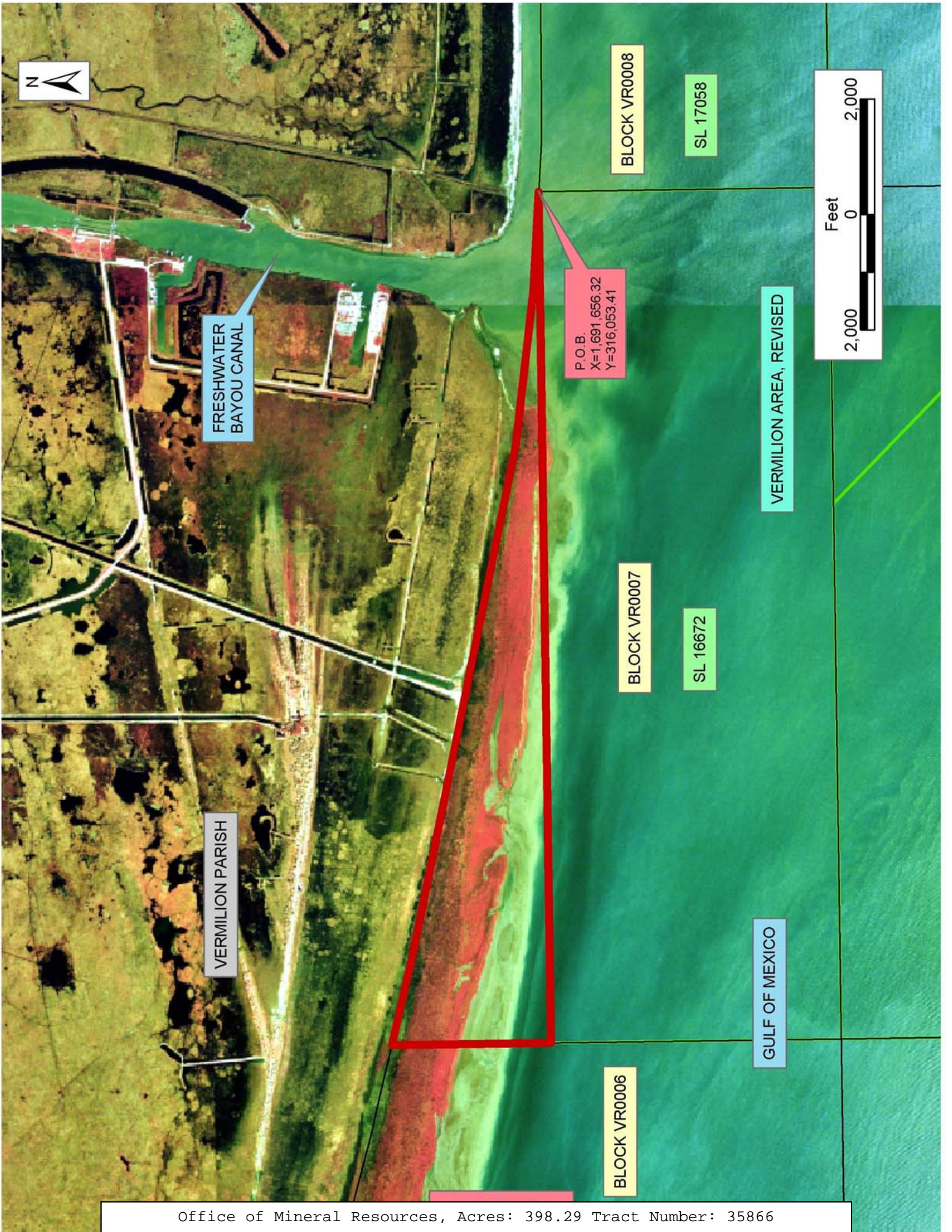
NOTE: The State of Louisiana does hereby reserve, and this lease shall be subject to, the imprescriptible right of surface use in the nature of a servitude in favor of the Department of Natural Resources, including its Offices and Commissions, for the sole purpose of implementing, constructing, servicing and maintaining approved coastal zone management and/or restoration projects. Utilization of any and all rights derived under this lease by the mineral lessee, its agents, successors or assigns,

shall not interfere with nor hinder the reasonable surface use by the Department of Natural Resources, its Offices or Commissions, as herein above reserved.

NOTE: The Department of Wildlife and Fisheries has designated certain areas in the coastal waters of the State of Louisiana as Oyster Seed Bed Areas. The exact location of those Seed Bed Areas must be obtained from the Department of Wildlife and Fisheries and any work done under a mineral lease from the State of Louisiana may necessarily be conducted in conformity with the rules and regulations promulgated by the said Department of Wildlife and Fisheries for Oyster Seed Bed Areas.

Applicant: ATEC Energy Ventures, L.L.C.

Bidder	Cash Payment	Price/Acre	Rental	Oil	Gas	Other



FRESHWATER
BAYOU CANAL

VERMILION PARISH

BLOCK VR0008

SL 17058

P.O.B.
X=1,691,656.32
Y=316,053.41

BLOCK VR0007

SL 16672

VERMILION AREA, REVISED

BLOCK VR0006

GULF OF MEXICO



TRACT 35867 - Portion of Block 16, Vermilion Area, Revised, Vermilion Parish, Louisiana

The beds and bottoms of all water bodies belonging to the State of Louisiana located in that portion of Block 16, Vermilion Area, Revised, together with any present lands formed by accretion to the shoreline, located in Vermilion Parish, Louisiana, and not presently under mineral lease on December 10, 2003, the geographical area of which is more fully described as follows: Beginning at a point within Block 16, Vermilion Area, Revised, said point also being the Northeast Corner of State Lease No. 17728 and the Southeast Corner of State Lease No. 17159 having Coordinates of X = 1,656,354.00 and Y = 310,070.00; thence North 3,721.90 feet along the East Line of said State Lease No. 17159 to its Northeast Corner and a point on the South line of State Lease No. 3763, as amended, having Coordinates of X = 1,656,354.00 and Y = 313,791.90; thence along the boundaries of said State Lease No. 3763 the following: North 56 degrees 25 minutes 23 seconds East 1,047.66 feet to a point having Coordinates of X = 1,657,226.85 and Y = 314,371.31, North 87 degrees 18 minutes 26 seconds East 596.22 feet to a point having Coordinates of X = 1,657,822.41 and Y = 314,399.32, North 58 degrees 44 minutes 03 seconds East 1,687.27 feet to a point having Coordinates of X = 1,659,264.63 and Y = 315,275.03, North 59 degrees 16 minutes 15 seconds East 1,025.81 feet to a point having Coordinates of X = 1,660,146.41 and Y = 315,799.20, North 54 degrees 35 minutes 36 seconds East 780.63 feet to a point having Coordinates of X = 1,660,782.67 and Y = 316,251.48, North 50 degrees 50 minutes 26 seconds East 743.10 feet to a point having Coordinates of X = 1,661,358.86 and Y = 316,720.73, North 20 degrees 42 minutes 30 seconds East 921.63 feet to its Northeast Corner and a point on the North line of said Block 16, having Coordinates of X = 1,661,684.76 and Y = 317,582.82; thence East 455.46 feet to the Northeast Corner of said Block 16 having Coordinates of X = 1,662,140.22 and Y = 317,582.82; thence South 13,549.69 feet along the East Line of said Block 16 to a point on the three mile line as depicted in that certain decision of the Supreme Court of the United States, United States vs. State of Louisiana et al No. 9 Original, in 1975, having Coordinates of X = 1,662,140.22 and Y = 304,033.13; thence Northwesterly on a straight line to a point having Coordinates of X = 1,661,678 and Y = 304,151; thence Northwesterly on a straight line to a point having Coordinates of X = 1,659,494 and Y = 304,616; thence Northwesterly on an arc having a radius of 18,240.60 feet and a center at X = 1,663,290 and Y = 322,457 to a point having Coordinates of X = 1,659,476 and Y = 304,620; thence Northwesterly on a straight line to a point having Coordinates of X = 1,658,120 and Y = 304,910; thence Northwesterly on an arc having a radius of 18,240.60 feet and a center at X = 1,658,887 and Y = 323,134 to a point having Coordinates of X = 1,656,354 and Y = 305,070, also being the Southeast corner of said State Lease No. 17728; thence North 5,000.00 feet along the East Line of said State Lease No. 17728 to the point of beginning, containing approximately **1,433.76 acres, LESS AND EXCEPT** that portion thereof, if any, lying seaward of the line three nautical miles from the coast line of Louisiana, as said three mile line has been decreed by the Supreme Court of the

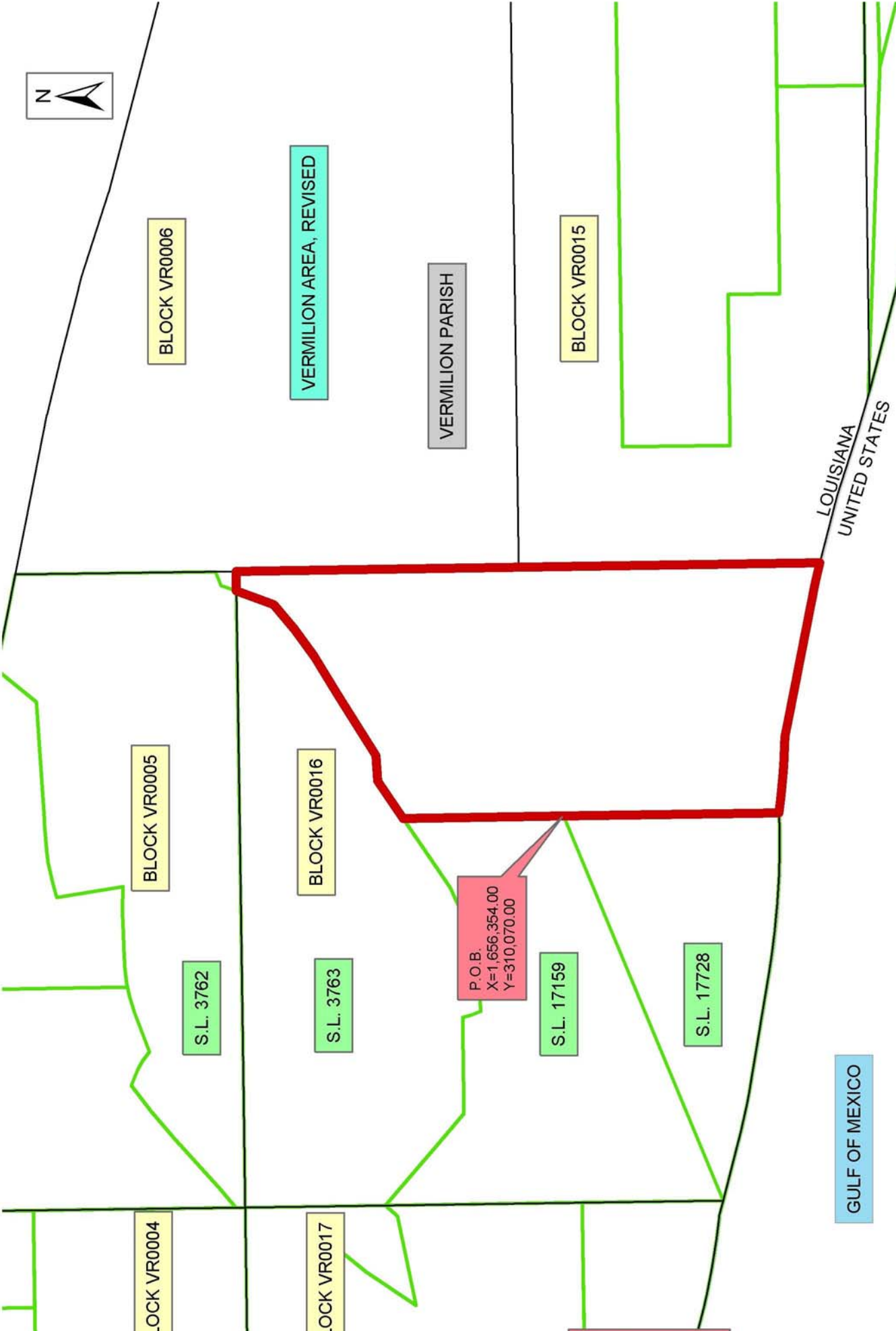
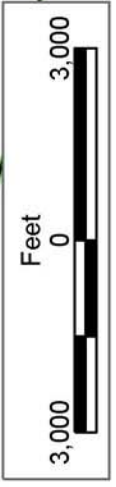
United States, as determined by a Special Master appointed therein, in litigation styled **United States v. State of Louisiana et al No. 9 Original**, in 1975, all as more particularly outlined on a plat in the Office of Mineral Resources, Department of Natural Resources. All bearings, distances and coordinates are based on the Louisiana Coordinate System of 1927, (South Zone).

NOTE: The above description of the Tract nominated for lease has been provided and corrected, where required, exclusively by the nomination party. Any mineral lease selected from this Tract and awarded by the Louisiana State Mineral Board shall be without warranty of any kind, either express, implied, or statutory, including, but not limited to, the implied warranties of merchantability and fitness for a particular purpose. Should the mineral lease awarded by the Louisiana State Mineral Board be subsequently modified, cancelled or abrogated due to the existence of conflicting leases, operating agreements, private claims or other future obligations or conditions which may affect all or any portion of the leased Tract, it shall not relieve the Lessee of the obligation to pay any bonus due thereon to the Louisiana State Mineral Board, nor shall the Louisiana State Mineral Board be obligated to refund any consideration paid by the Lessor prior to such modification, cancellation, or abrogation, including, but not limited to, bonuses, rentals and royalties.

NOTE: The State of Louisiana does hereby reserve, and this lease shall be subject to, the imprescriptible right of surface use in the nature of a servitude in favor of the Department of Natural Resources, including its Offices and Commissions, for the sole purpose of implementing, constructing, servicing and maintaining approved coastal zone management and/or restoration projects. Utilization of any and all rights derived under this lease by the mineral lessee, its agents, successors or assigns, shall not interfere with nor hinder the reasonable surface use by the Department of Natural Resources, its Offices or Commissions, as herein above reserved.

Applicant: ATEC Energy Ventures, L.L.C.

Bidder	Cash Payment	Price/Acre	Rental	Oil	Gas	Other



P.O.B.
 X=1,656,354.00
 Y=310,070.00

TRACT 35868 - Portion of Block 6, Vermilion Area, Revised, Vermilion Parish, Louisiana

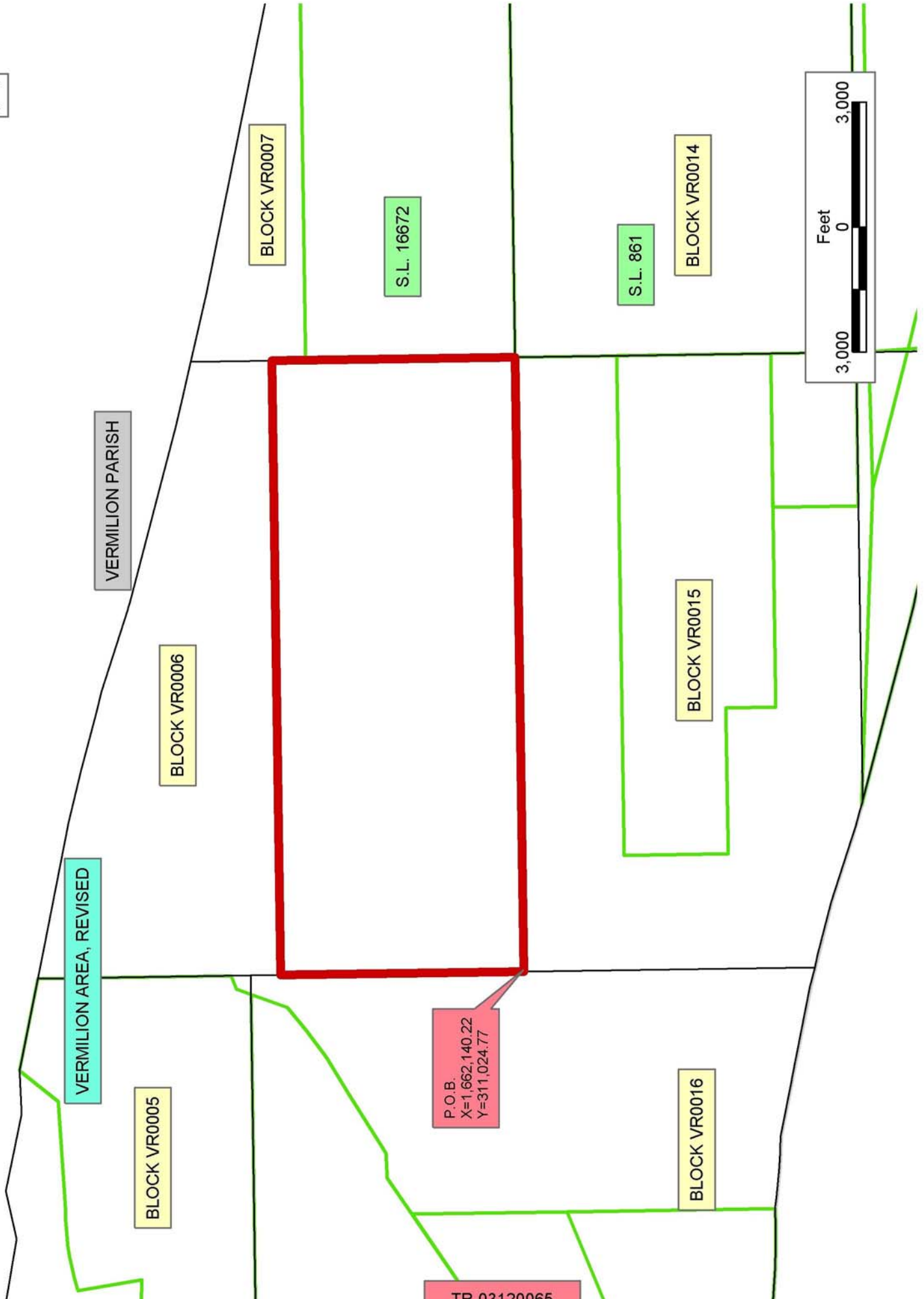
The beds and bottoms of all water bodies belonging to the State of Louisiana located in that portion of Block 6, Vermilion Area, Revised, together with any present lands formed by accretion to the shoreline, located in Vermilion Parish, Louisiana, and not presently under mineral lease on December 10, 2003, the geographical area of which is more fully described as follows: Beginning at the Southwest Corner of Block 6, Vermilion Area, Revised, having Coordinates of X = 1,662,140.22 and Y = 311,024.77; thence North 5,839.04 feet along the West Line of said Block 6 to a point having Coordinates of X = 1,662,140.22 and Y = 316,863.81; thence East 14,758.05 feet to a point on the East Line of said Block 6 having Coordinates of X = 1,676,898.27 and Y = 316,863.81; thence South 5,839.04 feet along the East Line of said Block 6 to its Southeast Corner having Coordinates of X = 1,676,898.27 and Y = 311,024.77; thence West 14,758.05 feet along the South Line of said Block 6 to the Point of Beginning, containing approximately **1,978.26 acres**, all as more particularly outlined on a plat on file in the Office of Mineral Resources, Department of Natural Resources. All bearings, distances and coordinates are based on Louisiana Coordinate System of 1927, (North or South Zone).

NOTE: The above description of the Tract nominated for lease has been provided and corrected, where required, exclusively by the nomination party. Any mineral lease selected from this Tract and awarded by the Louisiana State Mineral Board shall be without warranty of any kind, either express, implied, or statutory, including, but not limited to, the implied warranties of merchantability and fitness for a particular purpose. Should the mineral lease awarded by the Louisiana State Mineral Board be subsequently modified, cancelled or abrogated due to the existence of conflicting leases, operating agreements, private claims or other future obligations or conditions which may affect all or any portion of the leased Tract, it shall not relieve the Lessee of the obligation to pay any bonus due thereon to the Louisiana State Mineral Board, nor shall the Louisiana State Mineral Board be obligated to refund any consideration paid by the Lessor prior to such modification, cancellation, or abrogation, including, but not limited to, bonuses, rentals and royalties.

NOTE: The State of Louisiana does hereby reserve, and this lease shall be subject to, the imprescriptible right of surface use in the nature of a servitude in favor of the Department of Natural Resources, including its Offices and Commissions, for the sole purpose of implementing, constructing, servicing and maintaining approved coastal zone management and/or restoration projects. Utilization of any and all rights derived under this lease by the mineral lessee, its agents, successors or assigns, shall not interfere with nor hinder the reasonable surface use by the Department of Natural Resources, its Offices or Commissions, as herein above reserved.

Applicant: ATEC Energy Ventures, L.L.C.

Bidder	Cash Payment	Price/Acre	Rental	Oil	Gas	Other



TRACT 35869 - Portion of Block 15, Vermilion Area, Revised, Vermilion Parish, Louisiana

The beds and bottoms of all water bodies belonging to the State of Louisiana located in that portion of Block 15, Vermilion Area, Revised, together with any present lands formed by accretion to the shoreline, located in Vermilion Parish, Louisiana, and not presently under mineral lease on December 10, 2003, the geographical area of which is more fully described as follows: Beginning at the most West Southwest Corner of State Lease No. 15040, as amended, having Coordinates of X = 1,664,898.27 and Y = 306,074.77; thence West 2,758.05 feet to a point on the West Line of Block 15, Vermilion Area, Revised, having Coordinates of X = 1,662,140.22 and Y = 306,074.77; thence North 4,950.00 feet along the West Line of said Block 15 to its Northwest Corner having Coordinates of X = 1,662,140.22 and Y = 311,024.77; thence East 14,758.05 feet along the North Line of said Block 15 to its Northeast corner having Coordinates of X = 1,676,898.27 and Y = 311,024.77; thence South 2,450.00 feet along the East Line of said Block 6 to the Northeast Corner of said State Lease No. 15040 having Coordinates of X = 1,676,898.27 and Y = 308,574.77; thence along the boundaries of said State Lease No. 15040 the following: West 12,000.00 feet to a point having Coordinates of X = 1,664,898.27 and Y = 308,574.77, and South 2,500.00 feet to the Point of Beginning, containing approximately **988.35 acres**, all as more particularly outlined on a plat on file in the Office of Mineral Resources, Department of Natural Resources. All bearings, distances and coordinates are based on Louisiana Coordinate System of 1927, (North or South Zone).

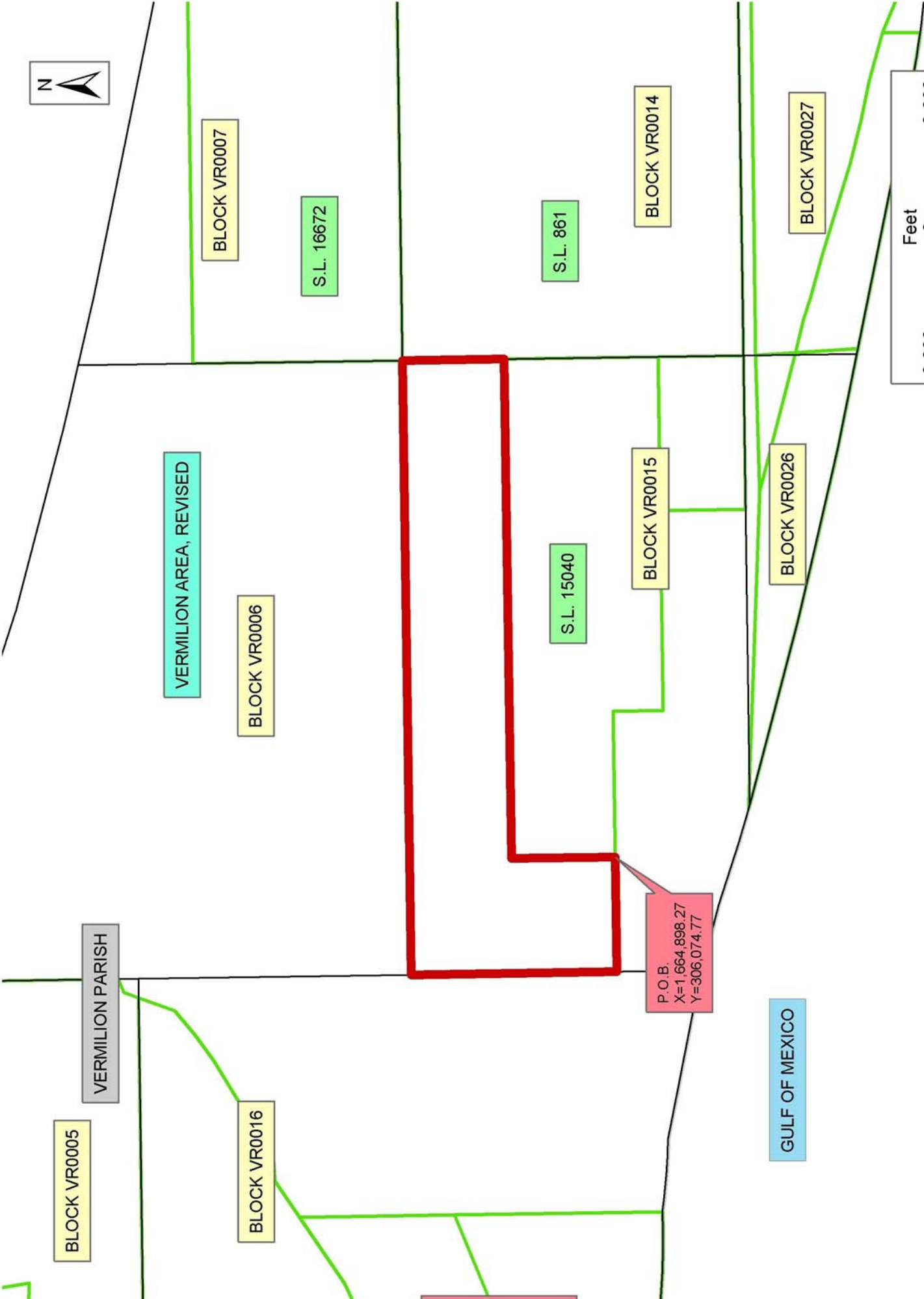
NOTE: The above description of the Tract nominated for lease has been provided and corrected, where required, exclusively by the nomination party. Any mineral lease selected from this Tract and awarded by the Louisiana State Mineral Board shall be without warranty of any kind, either express, implied, or statutory, including, but not limited to, the implied warranties of merchantability and fitness for a particular purpose. Should the mineral lease awarded by the Louisiana State Mineral Board be subsequently modified, cancelled or abrogated due to the existence of conflicting leases, operating agreements, private claims or other future obligations or conditions which may affect all or any portion of the leased Tract, it shall not relieve the Lessee of the obligation to pay any bonus due thereon to the Louisiana State Mineral Board, nor shall the Louisiana State Mineral Board be obligated to refund any consideration paid by the Lessor prior to such modification, cancellation, or abrogation, including, but not limited to, bonuses, rentals and royalties.

NOTE: The State of Louisiana does hereby reserve, and this lease shall be subject to, the imprescriptible right of surface use in the nature of a servitude in favor of the Department of Natural Resources, including its Offices and Commissions, for the sole purpose of implementing, constructing, servicing and maintaining approved coastal zone management and/or restoration projects. Utilization of any and all rights derived under this lease by the mineral lessee, its agents, successors or assigns,

shall not interfere with nor hinder the reasonable surface use by the Department of Natural Resources, its Offices or Commissions, as herein above reserved.

Applicant: ATEC Energy Ventures, L.L.C.

Bidder	Cash Payment	Price/Acre	Rental	Oil	Gas	Other



P.O.B.
X=1,664,898.27
Y=306,074.77

TRACT 35870 - Portion of Block 15, Vermilion Area, Revised, Vermilion Parish, Louisiana

The beds and bottoms of all water bodies belonging to the State of Louisiana located in that portion of Block 15, Vermilion Area, Revised, together with any present lands formed by accretion to the shoreline, located in Vermilion Parish, Louisiana, and not presently under mineral lease on December 10, 2003, the geographical area of which is more fully described as follows: Beginning at a point within Block 15, Vermilion Area, Revised, said point also being the most West Southwest Corner of State Lease No. 15040, as amended, having Coordinates of X = 1,664,898.27 and Y = 306,074.77; thence along the boundaries of said State Lease No. 15040 the following: East 3,500.00 feet to a point having Coordinates of X = 1,668,398.27 and Y = 306,074.77, South 1,200.00 feet to a point having Coordinates of X = 1,668,398.27 and Y = 304,874.77 and East 8,500.00 feet to a point having Coordinates of X = 1,673,208.76 and Y = 304,874.77, being the Northwest Corner of State Lease No. 862, as amended; thence South 2,050.00 feet along the West Line of said State Lease No. 862 to its Southwest Corner and a point on the South Line of said Block 15 having Coordinates of X = 1,673,208.76 and Y = 302,824.77; thence West 7,086.81 feet along the South Line of said Block 15 to a point of intersection with the three mile line as depicted in that certain decision of the Supreme Court of the United States, United States vs. State of Louisiana et al No. 9 Original, in 1975, having Coordinates of X = 1,666,121.95 and Y = 302,824.77; thence Northwesterly on an arc having a radius of 18,240.60 feet and a center X = 1,671,018.00 and Y = 320,396.00 to a point having Coordinates of X = 1,665,216 and Y = 303,103; thence Northwesterly on a straight line to a point having Coordinates of X = 1,663,698 and Y = 303,612; thence Northwesterly on a straight line to a point having Coordinates of X = 1,662,427 and Y = 303,960; thence Northwesterly on a straight line to a point on the West line of said Block 15 having Coordinates of X = 1,662,140.22 and Y = 304,033.13; thence North 2,041.64 feet along the West Line of said Block 15 to a point having Coordinates of X = 1,662,140.22 and Y = 306,074.77; thence East 2,758.05 feet to the Point of Beginning, containing approximately **636.17 acres, LESS AND EXCEPT** that portion thereof, if any, lying seaward of the line three nautical miles from the coast line of Louisiana, as said three mile line has been decreed by the Supreme Court of the United States, as determined by a Special Master appointed therein, in litigation styled **United States v. State of Louisiana et al No. 9 Original**, in 1975, all as more particularly outlined on a plat in the Office of Mineral Resources, Department of Natural Resources. All bearings, distances and coordinates are based on the Louisiana Coordinate System of 1927, (South Zone).

NOTE: The above description of the Tract nominated for lease has been provided and corrected, where required, exclusively by the nomination party. Any mineral lease selected from this Tract and awarded by the Louisiana State Mineral Board shall be without warranty of any kind, either express, implied, or statutory, including, but not limited to, the implied warranties of merchantability and fitness for a particular

purpose. Should the mineral lease awarded by the Louisiana State Mineral Board be subsequently modified, cancelled or abrogated due to the existence of conflicting leases, operating agreements, private claims or other future obligations or conditions which may affect all or any portion of the leased Tract, it shall not relieve the Lessee of the obligation to pay any bonus due thereon to the Louisiana State Mineral Board, nor shall the Louisiana State Mineral Board be obligated to refund any consideration paid by the Lessor prior to such modification, cancellation, or abrogation, including, but not limited to, bonuses, rentals and royalties.

NOTE: The State of Louisiana does hereby reserve, and this lease shall be subject to, the imprescriptible right of surface use in the nature of a servitude in favor of the Department of Natural Resources, including its Offices and Commissions, for the sole purpose of implementing, constructing, servicing and maintaining approved coastal zone management and/or restoration projects. Utilization of any and all rights derived under this lease by the mineral lessee, its agents, successors or assigns, shall not interfere with nor hinder the reasonable surface use by the Department of Natural Resources, its Offices or Commissions, as herein above reserved.

Applicant: ATEC Energy Ventures, L.L.C.

Bidder	Cash Payment	Price/Acre	Rental	Oil	Gas	Other

