

TRACT 35913 - Portion of Block 5, Main Pass Area, Revised, St. Bernard Parish, Louisiana

All of the lands now or formerly constituting the beds and bottoms of all water bodies of every nature and description the title of which vests in the State of Louisiana, together with all islands arising therein and other lands formed by accretion or by reliction, where allowed by law, excepting tax adjudicated lands, and not presently under mineral lease on December 10, 2003, situated in St. Bernard Parish, Louisiana, and more particularly described as follows: Beginning at a point on the South line of Block 5, Main Pass Area, Revised, said point also being on the Coastline derived from the June 16, 1975 Decree in the United States vs. Louisiana No. 9 Original, having Coordinates of X = 2,757,292.59 and Y = 366,580.00; thence North 14,750.00 feet to a point on the North line of said Block 5 having Coordinates of X = 2,757,292.59 and Y = 381,330.00; thence East 5,407.41 feet along the North line of said Block 5 to a point having Coordinates of X = 2,762,700.00 and Y = 381,330.00; thence South 7,754.46 feet to a point on said Coastline having Coordinates of X = 2,762,700.00 and Y = 373,575.54; thence along said Coastline the following courses: South 36 degrees 50 minutes 42 seconds West 2,604.84 feet to a point having Coordinates of X = 2,761,138.00 and Y = 371,491.00; South 39 degrees 59 minutes 57 seconds West 4,737.26 feet to a point having Coordinates of X = 2,758,093.00 and Y = 367,862.00; South 30 degrees 30 minutes 11 seconds West 1,237.21 feet to a point having Coordinates of X = 2,757,465.00 and Y = 366,796.00 and South 38 degrees 35 minutes 46 seconds West 276.37 feet to the point of beginning, containing **1,389.86 acres**, all as more particularly outlined on a plat on file in the Office of Mineral Resources, Department of Natural Resources. All bearings, distances and coordinates are based on Louisiana Coordinate System of 1927, (North or South Zone), where applicable.

NOTE: The above description of the Tract nominated for lease has been provided and corrected, where required, exclusively by the nomination party. Any mineral lease selected from this Tract and awarded by the Louisiana State Mineral Board shall be without warranty of any kind, either express, implied, or statutory, including, but not limited to, the implied warranties of merchantability and fitness for a particular purpose. Should the mineral lease awarded by the Louisiana State Mineral Board be subsequently modified, cancelled or abrogated due to the existence of conflicting leases, operating agreements, private claims or other future obligations or conditions which may affect all or any portion of the leased Tract, it shall not relieve the Lessee of the obligation to pay any bonus due thereon to the Louisiana State Mineral Board, nor shall the Louisiana State Mineral Board be obligated to refund any consideration paid by the Lessor prior to such modification, cancellation, or abrogation, including, but not limited to, bonuses, rentals and royalties.

NOTE: The Office of Mineral Resources will require a minimum bonus of \$190 per acre and a minimum royalty of 22%.

NOTE: The State of Louisiana does hereby reserve, and this lease shall be subject to, the imprescriptible right of surface use in the nature of a servitude in favor of the Department of Natural Resources, including its Offices and Commissions, for the sole purpose of implementing, constructing, servicing and maintaining approved coastal zone management and/or restoration projects. Utilization of any and all rights derived under this lease by the mineral lessee, its agents, successors or assigns, shall not interfere with nor hinder the reasonable surface use by the Department of Natural Resources, its Offices or Commissions, as herein above reserved.

Applicant: Encaladia Petroleum, LLC

Bidder	Cash Payment	Price/Acre	Rental	Oil	Gas	Other



BLOCK MP0005

MAIN PASS
AREA, REVISED

CHANDELEUR SOUND AREA

ST BERNARD PARISH

PLAQUEMINES PARISH

P.O.B.
X=2,757,292.59
Y=366,580.00

BRETON
SOUND
AREA

TRACT 35914 - Iberia Parish, Louisiana

All of the lands now or formerly constituting the beds and bottoms of all water bodies of every nature and description the title of which vests in the State of Louisiana, together with all islands arising therein and other lands formed by accretion or by reliction, where allowed by law, excepting tax adjudicated lands, and not presently under mineral lease on December 10, 2003, situated in Iberia Parish, Louisiana, and more particularly described as follows: Beginning at a point having Coordinates of X = 1,900,000.00 and Y = 304,900.00; thence West 7,000.00 feet to a point having Coordinates of X = 1,893,000.00 and Y = 304,900.00; thence North 5,300.00 feet to a point having Coordinates of X = 1,893,000.00 and Y = 310,200.00; thence East 7,000.00 feet to a point having Coordinates of X = 1,900,000.00 and Y = 310,200.00; thence South 5,300.00 feet to the point of beginning, containing **851.70 acres**, all as more particularly outlined on a plat on file in the Office of Mineral Resources, Department of Natural Resources. All bearings, distances and coordinates are based on Louisiana Coordinate System of 1927, (North or South Zone), where applicable.

NOTE: The above description of the Tract nominated for lease has been provided and corrected, where required, exclusively by the nomination party. Any mineral lease selected from this Tract and awarded by the Louisiana State Mineral Board shall be without warranty of any kind, either express, implied, or statutory, including, but not limited to, the implied warranties of merchantability and fitness for a particular purpose. Should the mineral lease awarded by the Louisiana State Mineral Board be subsequently modified, cancelled or abrogated due to the existence of conflicting leases, operating agreements, private claims or other future obligations or conditions which may affect all or any portion of the leased Tract, it shall not relieve the Lessee of the obligation to pay any bonus due thereon to the Louisiana State Mineral Board, nor shall the Louisiana State Mineral Board be obligated to refund any consideration paid by the Lessor prior to such modification, cancellation, or abrogation, including, but not limited to, bonuses, rentals and royalties.

NOTE: The above described tract may be in the vicinity of existing shell reefs where drilling and dredging operations must be conducted in strict conformity with the regulations adopted by the Louisiana Department of Wildlife and Fisheries and/or the U.S. Corps of Engineers, U.S. Army.

NOTE: The State of Louisiana does hereby reserve, and this lease shall be subject to, the imprescriptible right of surface use in the nature of a servitude in favor of the Department of Natural Resources, including its Offices and Commissions, for the sole purpose of implementing, constructing, servicing and maintaining approved coastal zone management and/or restoration projects. Utilization of any and all rights derived under this lease by the mineral lessee, its agents, successors or assigns, shall not interfere with nor hinder the reasonable surface use by the

Department of Natural Resources, its Offices or Commissions, as herein above reserved.

NOTE: The Department of Wildlife and Fisheries has designated certain areas in the coastal waters of the State of Louisiana as Oyster Seed Bed Areas. The exact location of those Seed Bed Areas must be obtained from the Department of Wildlife and Fisheries and any work done under a mineral lease from the State of Louisiana may necessarily be conducted in conformity with the rules and regulations promulgated by the said Department of Wildlife and Fisheries for Oyster Seed Bed Areas.

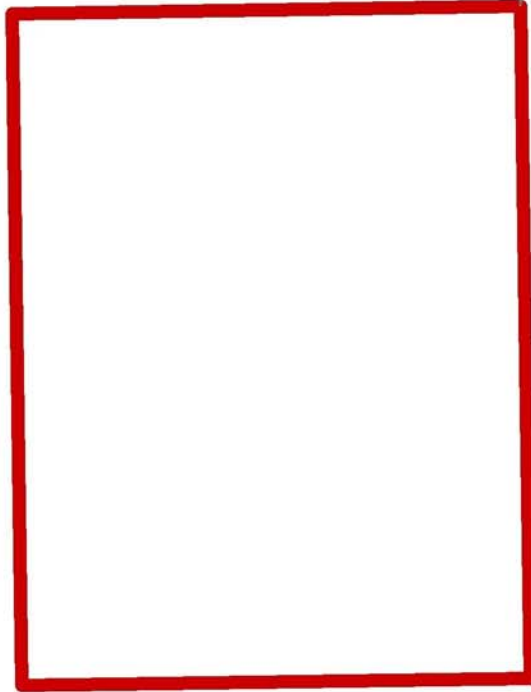
Applicant: Anderson Exploration Co., Inc

Bidder	Cash Payment	Price/Acre	Rental	Oil	Gas	Other

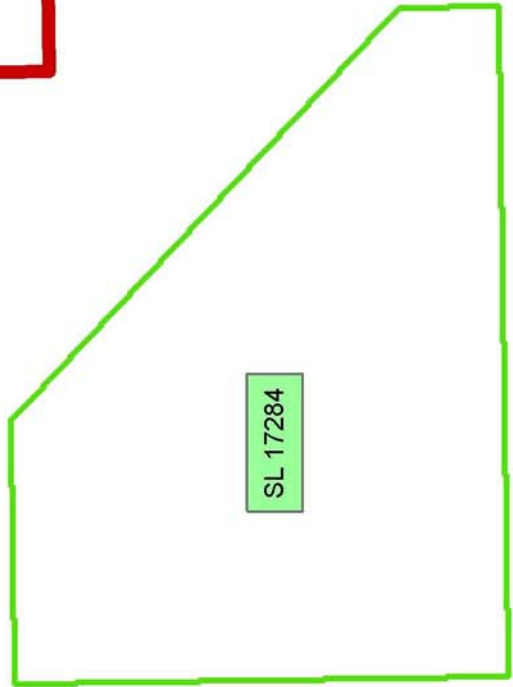


IBERIA PARISH

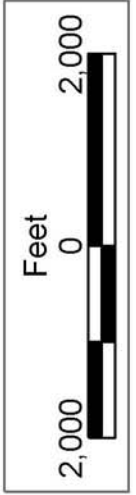
EAST COTE BLANCHE BAY



P.O.B.
X=1,900,000.00
Y=304,900.00



SL 17284



TRACT 35915 - Plaquemines Parish, Louisiana

All of the lands now or formerly constituting the beds and bottoms of all water bodies of every nature and description the title of which vests in the State of Louisiana, together with all islands arising therein and other lands formed by accretion or by reliction, where allowed by law, excepting tax adjudicated lands, and not presently under mineral lease on December 10, 2003, situated in Plaquemines Parish, Louisiana, and more particularly described as follows: Beginning at the Northwest corner of State Lease No. 17721 having Coordinates of X = 2,483,116.12 and Y = 251,392.07; thence South 1,131.91 feet along the West line of said State Lease No. 17721 to a point having Coordinates of X = 2,483,116.12 and Y = 250,260.17; thence West 4,247.25 feet to a point having Coordinates of X = 2,478,868.87 and Y = 250,260.17; thence North 00 degrees 48 minutes 48 seconds West 10,210.39 feet to a point on the South line State Lease No. 2104; thence Easterly along the boundaries of said State Lease No. 2104 to a point having a Coordinate of X = 2,480,000.00; thence North to a point on the boundary of said State Lease No. 2104 having X = 2,480,000.00 and Y = 267,086.79; thence South 89 degrees 15 minutes West 4,230.56 feet along the boundary of said State Lease No. 2104 to a point having Coordinates of X = 2,475,769.50 and Y = 267,031.42; thence North 1,208.42 feet to a point on the South line of State Lease No. 2028, as amended having Coordinates of X = 2,475,769.50 and Y = 268,239.84; thence along the boundaries of said State Lease No. 2028 the following: North 89 degrees 15 minutes 00 seconds East 4,344.11 feet, North 00 degrees 45 minutes 01 seconds West 3,891.68 feet and North 89 degrees 15 minutes 00 seconds East 4,058.06 feet to a point having Coordinates of X = 2,484,120.00 and Y = 272,241.17; thence South 4,391.17 feet to a point on the boundary of State Lease No. 212, as amended, having Coordinates of X = 2,484,120.00 and Y = 267,850.00; thence along the boundaries of said State Lease No. 212 the following: South 64 degrees 17 minutes 01 seconds East 2,014.29 feet to a point having Coordinates of X = 2,485,934.78 and Y = 266,975.97, South 2,256.44 feet to a point having Coordinates of X = 2,485,934.78 and Y = 264,719.53, being a point of intersection with that certain Agreement between Cockrell et al and the State of Louisiana, dated May 16, 1938, recorded at Book 88, Page 189; thence South 89 degrees 13 minutes 59 seconds West 319.73 feet along the North line of said Agreement to a point of intersection with the boundary of said State Lease No. 212 having Coordinates of X = 2,485,615.08 and Y = 264,715.25; thence along the boundaries of said State Lease No. 212 the following: North 77 degrees 35 minutes 59 seconds West 1,326.02 feet to a point having Coordinates of X = 2,484,320.00 and Y = 265,000.00, South 31 degrees 34 minutes 53 seconds West 2,864.19 feet to a point having Coordinates of X = 2,482,820.00 and Y = 262,560.00, South 31 degrees 34 minutes 53 seconds West 2,114.11 feet to a point having Coordinates of X = 2,481,712.82 and Y = 260,759.00; thence Southeasterly along the Southern boundary of said State Lease No. 212 to a point having a coordinate of X = 2,484,919.24; thence Southerly approx. 8065 feet to a point on the north boundary of said State Lease No. 17721 having Coordinates of X = 2,485,027.18 and Y = 251,392.08, thence West 1,911.06 feet along the North boundary of said State Lease No. 17721 to

point of beginning, **LESS AND EXCEPT**, if any, that certain Agreement between Cockrell et al and the State of Louisiana, State Lease No. 2104 and State Lease No. 212, as amended, containing approximately **1,051.00 acres**, all as more particularly outlined on a plat on file in the Office of Mineral Resources, Department of Natural Resources. All bearings, distances and coordinates are based on Louisiana Coordinate System of 1927, (North or South Zone), where applicable.

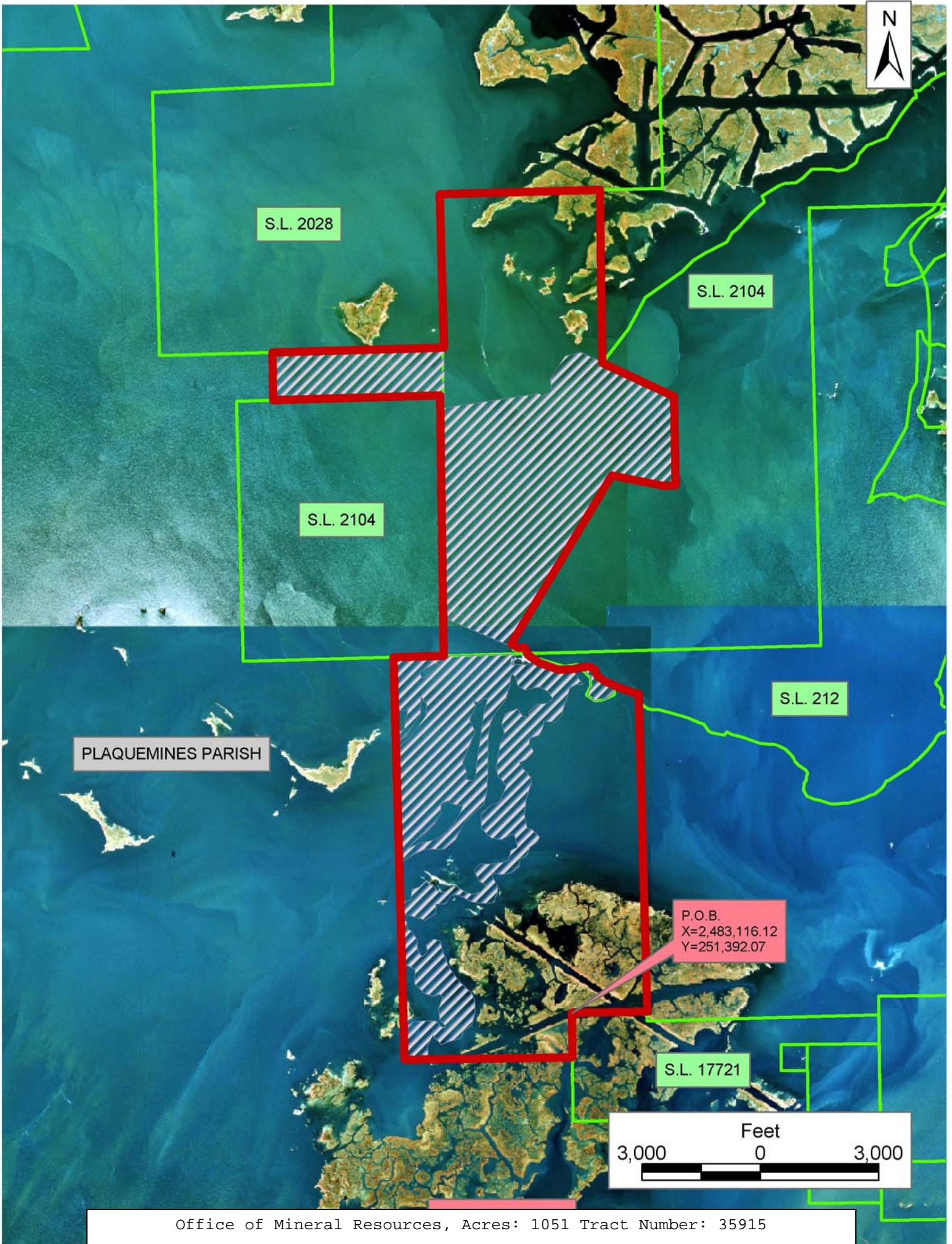
NOTE: The above description of the Tract nominated for lease has been provided and corrected, where required, exclusively by the nomination party. Any mineral lease selected from this Tract and awarded by the Louisiana State Mineral Board shall be without warranty of any kind, either express, implied, or statutory, including, but not limited to, the implied warranties of merchantability and fitness for a particular purpose. Should the mineral lease awarded by the Louisiana State Mineral Board be subsequently modified, cancelled or abrogated due to the existence of conflicting leases, operating agreements, private claims or other future obligations or conditions which may affect all or any portion of the leased Tract, it shall not relieve the Lessee of the obligation to pay any bonus due thereon to the Louisiana State Mineral Board, nor shall the Louisiana State Mineral Board be obligated to refund any consideration paid by the Lessor prior to such modification, cancellation, or abrogation, including, but not limited to, bonuses, rentals and royalties.

NOTE: The State of Louisiana does hereby reserve, and this lease shall be subject to, the imprescriptible right of surface use in the nature of a servitude in favor of the Department of Natural Resources, including its Offices and Commissions, for the sole purpose of implementing, constructing, servicing and maintaining approved coastal zone management and/or restoration projects. Utilization of any and all rights derived under this lease by the mineral lessee, its agents, successors or assigns, shall not interfere with nor hinder the reasonable surface use by the Department of Natural Resources, its Offices or Commissions, as herein above reserved.

NOTE: The Department of Wildlife and Fisheries has designated certain areas in the coastal waters of the State of Louisiana as Oyster Seed Bed Areas. The exact location of those Seed Bed Areas must be obtained from the Department of Wildlife and Fisheries and any work done under a mineral lease from the State of Louisiana may necessarily be conducted in conformity with the rules and regulations promulgated by the said Department of Wildlife and Fisheries for Oyster Seed Bed Areas.

Applicant: Mark A. O'Neal & Associates, Inc.

Bidder	Cash Payment	Price/Acre	Rental	Oil	Gas	Other



S.L. 2028

S.L. 2104

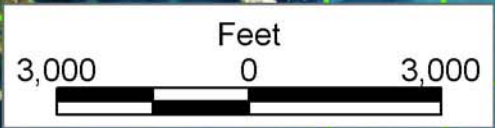
S.L. 2104

S.L. 212

PLAQUEMINES PARISH

P.O.B.
X=2,483,116.12
Y=251,392.07

S.L. 17721



TRACT 35916 - Terrebonne Parish, Louisiana

All of the lands now or formerly constituting the beds and bottoms of all water bodies of every nature and description the title of which vests in the State of Louisiana, together with all islands arising therein and other lands formed by accretion or by reliction, where allowed by law, excepting tax adjudicated lands, and not presently under mineral lease on December 10, 2003, situated in Terrebonne Parish, Louisiana, and more particularly described as follows: Beginning at a point having Coordinates of X = 2,101,675.00 and Y = 242,355.00; thence North 10,830.00 feet to a point having Coordinates of X = 2,101,675.00 and Y = 253,185.00; thence East approximately 10,153 feet to a point on the Western boundary line of State Lease No. 3401, as amended; thence along the boundary of said State Lease No. 3401 the following courses: Southeasterly, Southerly, Easterly and Northerly to a point on the Eastern boundary of said State Lease No. 3401 also being a point on the Southern boundary line of State Lease No. 3475; thence Northeasterly along the Southern boundary of said State Lease No. 3475 to a point having a Coordinate of X = 2,114,920.00; thence South 10,801.39 feet to a point having Coordinates of X = 2,114,920.00 and Y = 242,355.00; thence West 13,245.00 feet to the point of beginning, **LESS AND EXCEPT** any portion of said State Lease No. 3401 and said State Lease No. 3475 that may lie within the above described tract, containing approximately **703 acres**, all as more particularly outlined on a plat on file in the Office of Mineral Resources, Department of Natural Resources. All bearings, distances and coordinates are based on Louisiana Coordinate System of 1927, (North or South Zone), where applicable.

NOTE: The above description of the Tract nominated for lease has been provided and corrected, where required, exclusively by the nomination party. Any mineral lease selected from this Tract and awarded by the Louisiana State Mineral Board shall be without warranty of any kind, either express, implied, or statutory, including, but not limited to, the implied warranties of merchantability and fitness for a particular purpose. Should the mineral lease awarded by the Louisiana State Mineral Board be subsequently modified, cancelled or abrogated due to the existence of conflicting leases, operating agreements, private claims or other future obligations or conditions which may affect all or any portion of the leased Tract, it shall not relieve the Lessee of the obligation to pay any bonus due thereon to the Louisiana State Mineral Board, nor shall the Louisiana State Mineral Board be obligated to refund any consideration paid by the Lessor prior to such modification, cancellation, or abrogation, including, but not limited to, bonuses, rentals and royalties.

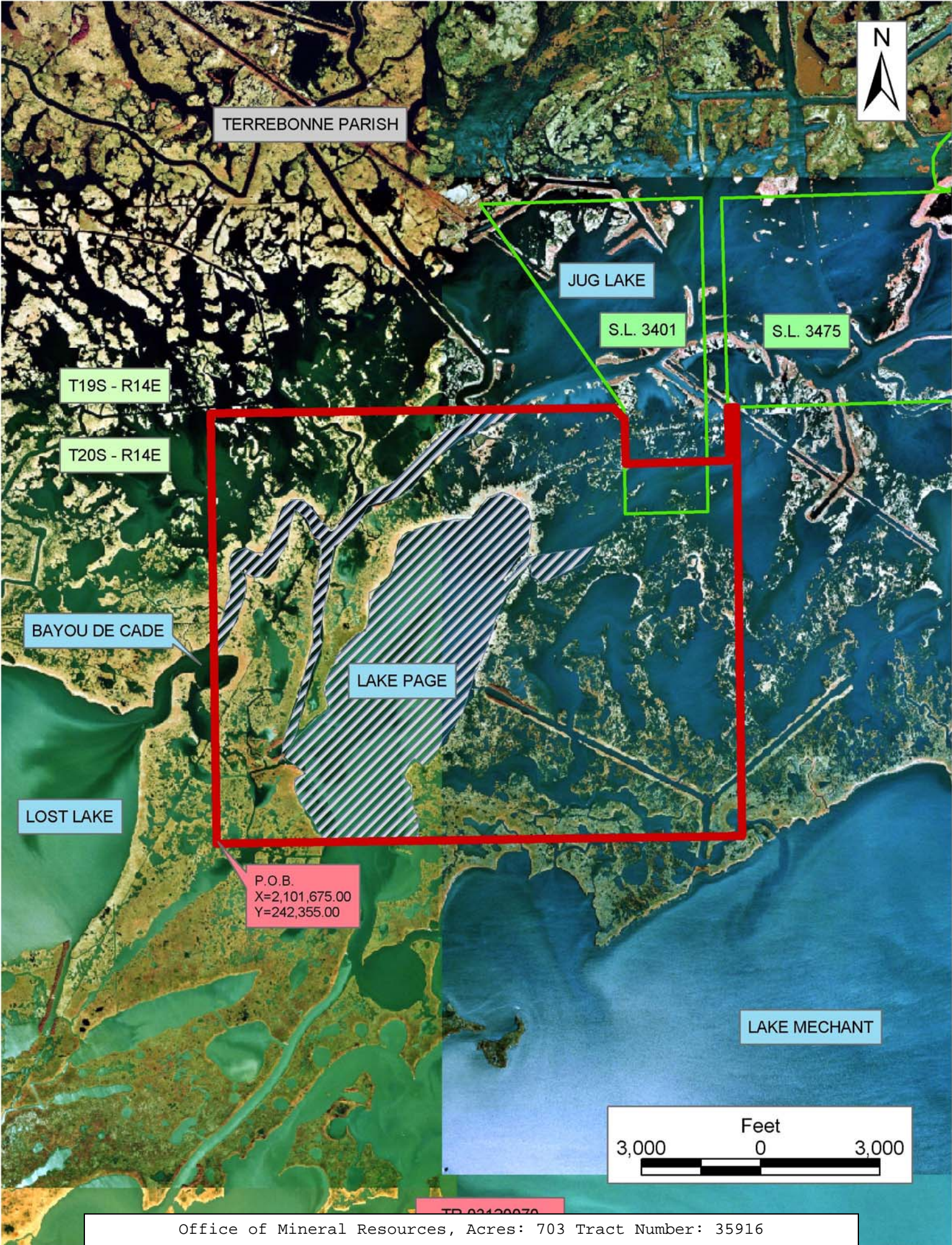
NOTE: The State of Louisiana does hereby reserve, and this lease shall be subject to, the imprescriptible right of surface use in the nature of a servitude in favor of the Department of Natural Resources, including its Offices and Commissions, for the sole purpose of implementing, constructing, servicing and maintaining approved coastal zone management and/or restoration projects. Utilization of any and all rights derived under this lease by the mineral lessee, its agents, successors or assigns,

shall not interfere with nor hinder the reasonable surface use by the Department of Natural Resources, its Offices or Commissions, as herein above reserved.

NOTE: The Department of Wildlife and Fisheries has designated certain areas in the coastal waters of the State of Louisiana as Oyster Seed Bed Areas. The exact location of those Seed Bed Areas must be obtained from the Department of Wildlife and Fisheries and any work done under a mineral lease from the State of Louisiana may necessarily be conducted in conformity with the rules and regulations promulgated by the said Department of Wildlife and Fisheries for Oyster Seed Bed Areas.

Applicant: The Louisiana Land And Exploration Company

Bidder	Cash Payment	Price/Acre	Rental	Oil	Gas	Other



TERREBONNE PARISH



JUG LAKE

S.L. 3401

S.L. 3475

T19S - R14E

T20S - R14E

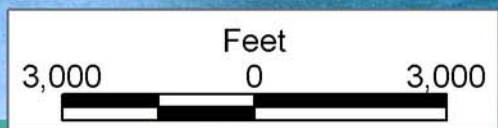
BAYOU DE CADE

LOST LAKE

LAKE PAGE

LAKE MECHANT

P.O.B.
X=2,101,675.00
Y=242,355.00



TRACT 35917 - Terrebonne Parish, Louisiana

All of the lands now or formerly constituting the beds and bottoms of all water bodies of every nature and description the title of which vests in the State of Louisiana, together with all islands arising therein and other lands formed by accretion or by reliction, where allowed by law, excepting tax adjudicated lands, and not presently under mineral lease on December 10, 2003, situated in Terrebonne Parish, Louisiana, and more particularly described as follows: Beginning at a point having Coordinates of X = 2,101,675.00 and Y = 242,355.00; thence West 7,900.00 feet to a point having Coordinates of X = 2,093,775.00 and Y = 242,355.00; thence North 10,830.00 feet to a point having Coordinates of X = 2,093,775.00 and Y = 253,185.00; thence East 7,900.00 feet to a point having Coordinates of X = 2,101,675.00 and Y = 253,185.00; thence South 10,830.00 feet to the point of beginning, containing approximately **600 acres**, all as more particularly outlined on a plat on file in the Office of Mineral Resources, Department of Natural Resources. All bearings, distances and coordinates are based on Louisiana Coordinate System of 1927, (North or South Zone), where applicable.

NOTE: The above description of the Tract nominated for lease has been provided and corrected, where required, exclusively by the nomination party. Any mineral lease selected from this Tract and awarded by the Louisiana State Mineral Board shall be without warranty of any kind, either express, implied, or statutory, including, but not limited to, the implied warranties of merchantability and fitness for a particular purpose. Should the mineral lease awarded by the Louisiana State Mineral Board be subsequently modified, cancelled or abrogated due to the existence of conflicting leases, operating agreements, private claims or other future obligations or conditions which may affect all or any portion of the leased Tract, it shall not relieve the Lessee of the obligation to pay any bonus due thereon to the Louisiana State Mineral Board, nor shall the Louisiana State Mineral Board be obligated to refund any consideration paid by the Lessor prior to such modification, cancellation, or abrogation, including, but not limited to, bonuses, rentals and royalties.

NOTE: The State of Louisiana does hereby reserve, and this lease shall be subject to, the imprescriptible right of surface use in the nature of a servitude in favor of the Department of Natural Resources, including its Offices and Commissions, for the sole purpose of implementing, constructing, servicing and maintaining approved coastal zone management and/or restoration projects. Utilization of any and all rights derived under this lease by the mineral lessee, its agents, successors or assigns, shall not interfere with nor hinder the reasonable surface use by the Department of Natural Resources, its Offices or Commissions, as herein above reserved.

NOTE: The Department of Wildlife and Fisheries has designated certain areas in the coastal waters of the State of Louisiana as Oyster Seed Bed Areas. The exact location of those Seed Bed Areas must be obtained from

the Department of Wildlife and Fisheries and any work done under a mineral lease from the State of Louisiana may necessarily be conducted in conformity with the rules and regulations promulgated by the said Department of Wildlife and Fisheries for Oyster Seed Bed Areas.

Applicant: The Louisiana Land And Exploration Company

Bidder	Cash Payment	Price/Acre	Rental	Oil	Gas	Other



TERREBONNE PARISH

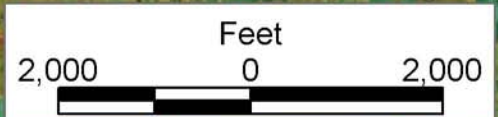
T19S - R14E

T20S - R14E

BAYOU DE CADE

LOST LAKE

P.O.B.
X=2,101,675.00
Y=242,355.00



TR 03120069

Office of Mineral Resources, Acres: 600 Tract Number: 35917



TRACT 35918 - Terrebonne Parish, Louisiana

All of the lands now or formerly constituting the beds and bottoms of all water bodies of every nature and description the title of which vests in the State of Louisiana, together with all islands arising therein and other lands formed by accretion or by reliction, where allowed by law, excepting tax adjudicated lands, and not presently under mineral lease on December 10, 2003, situated in Terrebonne Parish, Louisiana, and more particularly described as follows: Beginning at a point having Coordinates of X = 2,101,675.00 and Y = 242,355.00; thence South 7,900.00 feet to a point having Coordinates of X = 2,101,675.00 and Y = 234,455.00; thence West 7,900.00 feet to a point having Coordinates of X = 2,093,775.00 and Y = 234,455.00; thence North 7,900.00 feet to a point having Coordinates of X = 2,093,775.00 and Y = 242,355.00; thence East 7,900.00 feet to the point of beginning, containing approximately **280 acres**, all as more particularly outlined on a plat on file in the Office of Mineral Resources, Department of Natural Resources. All bearings, distances and coordinates are based on Louisiana Coordinate System of 1927, (North or South Zone), where applicable.

NOTE: The above description of the Tract nominated for lease has been provided and corrected, where required, exclusively by the nomination party. Any mineral lease selected from this Tract and awarded by the Louisiana State Mineral Board shall be without warranty of any kind, either express, implied, or statutory, including, but not limited to, the implied warranties of merchantability and fitness for a particular purpose. Should the mineral lease awarded by the Louisiana State Mineral Board be subsequently modified, cancelled or abrogated due to the existence of conflicting leases, operating agreements, private claims or other future obligations or conditions which may affect all or any portion of the leased Tract, it shall not relieve the Lessee of the obligation to pay any bonus due thereon to the Louisiana State Mineral Board, nor shall the Louisiana State Mineral Board be obligated to refund any consideration paid by the Lessor prior to such modification, cancellation, or abrogation, including, but not limited to, bonuses, rentals and royalties.

NOTE: The State of Louisiana does hereby reserve, and this lease shall be subject to, the imprescriptible right of surface use in the nature of a servitude in favor of the Department of Natural Resources, including its Offices and Commissions, for the sole purpose of implementing, constructing, servicing and maintaining approved coastal zone management and/or restoration projects. Utilization of any and all rights derived under this lease by the mineral lessee, its agents, successors or assigns, shall not interfere with nor hinder the reasonable surface use by the Department of Natural Resources, its Offices or Commissions, as herein above reserved.

NOTE: The Department of Wildlife and Fisheries has designated certain areas in the coastal waters of the State of Louisiana as Oyster Seed Bed Areas. The exact location of those Seed Bed Areas must be obtained from

the Department of Wildlife and Fisheries and any work done under a mineral lease from the State of Louisiana may necessarily be conducted in conformity with the rules and regulations promulgated by the said Department of Wildlife and Fisheries for Oyster Seed Bed Areas.

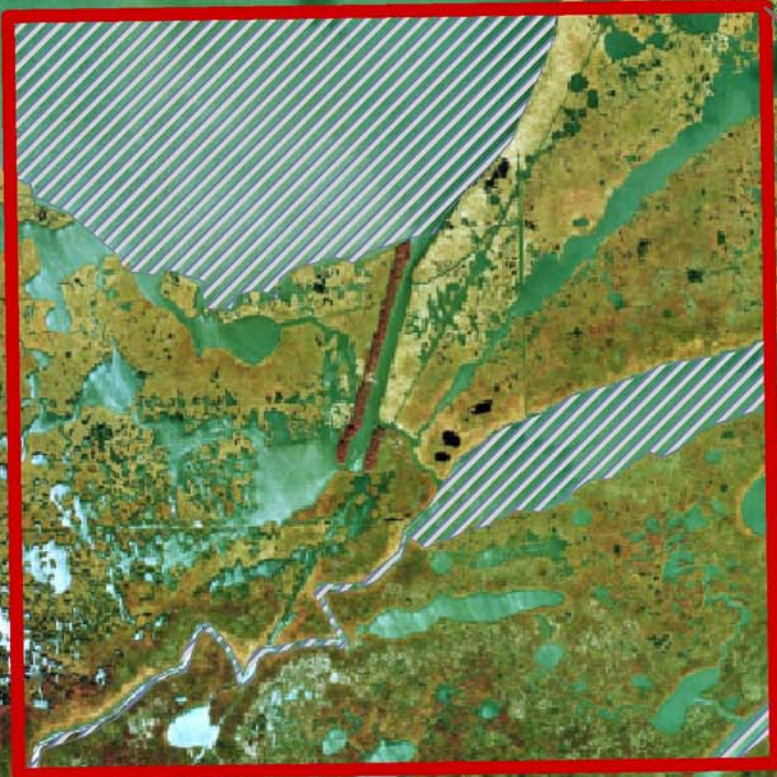
Applicant: The Louisiana Land And Exploration Company

Bidder	Cash Payment	Price/Acre	Rental	Oil	Gas	Other



LOST LAKE

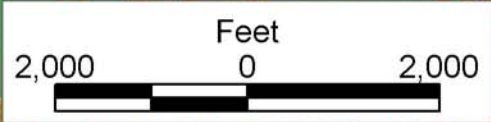
LAKE PAGE



P.O.B.
X=2,101,675.00
Y=242,355.00

TERREBONNE PARISH

LAKE MECHANT



TR 02120071

TRACT 35919 - Terrebonne Parish, Louisiana

All of the lands now or formerly constituting the beds and bottoms of all water bodies of every nature and description the title of which vests in the State of Louisiana, together with all islands arising therein and other lands formed by accretion or by reliction, where allowed by law, excepting tax adjudicated lands, and not presently under mineral lease on December 10, 2003, situated in Terrebonne Parish, Louisiana, and more particularly described as follows: Beginning at a point having Coordinates of X = 2,101,675.00 and Y = 242,355.00; thence East 13,245.00 feet to a point having Coordinates of X = 2,114,920.00 and Y = 242,355.00; thence South 7,900.00 feet to a point having Coordinates of X = 2,114,920.00 and Y = 234,455.00; thence West 13,245.00 feet to a point having Coordinates of X = 2,101,675.00 and Y = 234,455.00; thence North 7,900.00 feet to the point of beginning, containing approximately **1,392 acres**, all as more particularly outlined on a plat on file in the Office of Mineral Resources, Department of Natural Resources. All bearings, distances and coordinates are based on Louisiana Coordinate System of 1927, (North or South Zone), where applicable.

NOTE: The above description of the Tract nominated for lease has been provided and corrected, where required, exclusively by the nomination party. Any mineral lease selected from this Tract and awarded by the Louisiana State Mineral Board shall be without warranty of any kind, either express, implied, or statutory, including, but not limited to, the implied warranties of merchantability and fitness for a particular purpose. Should the mineral lease awarded by the Louisiana State Mineral Board be subsequently modified, cancelled or abrogated due to the existence of conflicting leases, operating agreements, private claims or other future obligations or conditions which may affect all or any portion of the leased Tract, it shall not relieve the Lessee of the obligation to pay any bonus due thereon to the Louisiana State Mineral Board, nor shall the Louisiana State Mineral Board be obligated to refund any consideration paid by the Lessor prior to such modification, cancellation, or abrogation, including, but not limited to, bonuses, rentals and royalties.

NOTE: The State of Louisiana does hereby reserve, and this lease shall be subject to, the imprescriptible right of surface use in the nature of a servitude in favor of the Department of Natural Resources, including its Offices and Commissions, for the sole purpose of implementing, constructing, servicing and maintaining approved coastal zone management and/or restoration projects. Utilization of any and all rights derived under this lease by the mineral lessee, its agents, successors or assigns, shall not interfere with nor hinder the reasonable surface use by the Department of Natural Resources, its Offices or Commissions, as herein above reserved.

NOTE: The Department of Wildlife and Fisheries has designated certain areas in the coastal waters of the State of Louisiana as Oyster Seed Bed Areas. The exact location of those Seed Bed Areas must be obtained from

the Department of Wildlife and Fisheries and any work done under a mineral lease from the State of Louisiana may necessarily be conducted in conformity with the rules and regulations promulgated by the said Department of Wildlife and Fisheries for Oyster Seed Bed Areas.

Applicant: The Louisiana Land And Exploration Company

Bidder	Cash Payment	Price/Acre	Rental	Oil	Gas	Other



TERREBONNE PARISH

LAKE PAGE

T20S - R14E

LAKE MECHANT

LAKE MECHANT

LOST LAKE

P.O.B.
X=2,101,675.00
Y=242,355.00

TR 03120072

TRACT 35920 - Terrebonne Parish, Louisiana

All of the lands now or formerly constituting the beds and bottoms of all water bodies of every nature and description the title of which vests in the State of Louisiana, together with all islands arising therein and other lands formed by accretion or by reliction, where allowed by law, excepting tax adjudicated lands, and not presently under mineral lease on December 10, 2003, situated in Terrebonne Parish, Louisiana, and more particularly described as follows: Beginning at a point having Coordinates of X = 2,130,376.67 and Y = 230,025.72; thence South 00 degrees 55 minutes 22 seconds East 8,563.19 feet to a point having Coordinates of X = 2,130,514.58 and Y = 221,463.65; thence South 89 degrees 04 minutes 37 seconds West 13,473.53 feet to a point having Coordinates of X = 2,117,042.80 and Y = 221,246.59; thence North 8,564.29 feet to a point having Coordinates of X = 2,117,042.80 and Y = 229,810.88; thence North 89 degrees 04 minutes 37 seconds East 13,335.60 feet to the point of beginning, containing approximately **2,437 acres**, all as more particularly outlined on a plat on file in the Office of Mineral Resources, Department of Natural Resources. All bearings, distances and coordinates are based on Louisiana Coordinate System of 1927, (North or South Zone), where applicable.

NOTE: The above description of the Tract nominated for lease has been provided and corrected, where required, exclusively by the nomination party. Any mineral lease selected from this Tract and awarded by the Louisiana State Mineral Board shall be without warranty of any kind, either express, implied, or statutory, including, but not limited to, the implied warranties of merchantability and fitness for a particular purpose. Should the mineral lease awarded by the Louisiana State Mineral Board be subsequently modified, cancelled or abrogated due to the existence of conflicting leases, operating agreements, private claims or other future obligations or conditions which may affect all or any portion of the leased Tract, it shall not relieve the Lessee of the obligation to pay any bonus due thereon to the Louisiana State Mineral Board, nor shall the Louisiana State Mineral Board be obligated to refund any consideration paid by the Lessor prior to such modification, cancellation, or abrogation, including, but not limited to, bonuses, rentals and royalties.

NOTE: The State of Louisiana does hereby reserve, and this lease shall be subject to, the imprescriptible right of surface use in the nature of a servitude in favor of the Department of Natural Resources, including its Offices and Commissions, for the sole purpose of implementing, constructing, servicing and maintaining approved coastal zone management and/or restoration projects. Utilization of any and all rights derived under this lease by the mineral lessee, its agents, successors or assigns, shall not interfere with nor hinder the reasonable surface use by the Department of Natural Resources, its Offices or Commissions, as herein above reserved.

NOTE: The Department of Wildlife and Fisheries has designated certain areas in the coastal waters of the State of Louisiana as Oyster Seed Bed Areas. The exact location of those Seed Bed Areas must be obtained from the Department of Wildlife and Fisheries and any work done under a mineral lease from the State of Louisiana may necessarily be conducted in conformity with the rules and regulations promulgated by the said Department of Wildlife and Fisheries for Oyster Seed Bed Areas.

Applicant: Rebecca Case

Bidder	Cash Payment	Price/Acre	Rental	Oil	Gas	Other

TERREBONNE PARISH



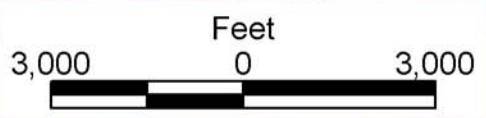
LAKE MECHANT

P.O.B.
X=2,130,376.60
Y=230,025.72

MUD LAKE

T20S - R15E

T21S - R15E



TR 00100075

Office of Mineral Resources, Acres: 2437 Tract Number: 35920

TRACT 35921 - Terrebonne Parish, Louisiana

All of the lands now or formerly constituting the beds and bottoms of all water bodies of every nature and description the title of which vests in the State of Louisiana, together with all islands arising therein and other lands formed by accretion or by reliction, where allowed by law, excepting tax adjudicated lands, and not presently under mineral lease on December 10, 2003, situated in Terrebonne Parish, Louisiana, and more particularly described as follows: Beginning at a point having Coordinates of X = 2,103,756.01 and Y = 213,755.05; thence North 00 degrees 43 minutes 46 seconds West 15,839.78 feet to a point having Coordinates of X = 2,103,554.36 and Y = 229,593.55; thence North 89 degrees 04 minutes 37 seconds East 13,490.19 feet to a point having Coordinates of X = 2,117,042.80 and Y = 229,810.88; thence South 15,800.66 feet to a point having Coordinates of X = 2,117,042.80 and Y = 214,010.22; thence South 88 degrees 53 minutes 59 seconds West 13,289.24 feet to the point of beginning, containing approximately **1,938 acres**, all as more particularly outlined on a plat on file in the Office of Mineral Resources, Department of Natural Resources. All bearings, distances and coordinates are based on Louisiana Coordinate System of 1927, (North or South Zone), where applicable.

NOTE: The above description of the Tract nominated for lease has been provided and corrected, where required, exclusively by the nomination party. Any mineral lease selected from this Tract and awarded by the Louisiana State Mineral Board shall be without warranty of any kind, either express, implied, or statutory, including, but not limited to, the implied warranties of merchantability and fitness for a particular purpose. Should the mineral lease awarded by the Louisiana State Mineral Board be subsequently modified, cancelled or abrogated due to the existence of conflicting leases, operating agreements, private claims or other future obligations or conditions which may affect all or any portion of the leased Tract, it shall not relieve the Lessee of the obligation to pay any bonus due thereon to the Louisiana State Mineral Board, nor shall the Louisiana State Mineral Board be obligated to refund any consideration paid by the Lessor prior to such modification, cancellation, or abrogation, including, but not limited to, bonuses, rentals and royalties.

NOTE: The State of Louisiana does hereby reserve, and this lease shall be subject to, the imprescriptible right of surface use in the nature of a servitude in favor of the Department of Natural Resources, including its Offices and Commissions, for the sole purpose of implementing, constructing, servicing and maintaining approved coastal zone management and/or restoration projects. Utilization of any and all rights derived under this lease by the mineral lessee, its agents, successors or assigns, shall not interfere with nor hinder the reasonable surface use by the Department of Natural Resources, its Offices or Commissions, as herein above reserved.

NOTE: The Department of Wildlife and Fisheries has designated certain areas in the coastal waters of the State of Louisiana as Oyster Seed Bed Areas. The exact location of those Seed Bed Areas must be obtained from the Department of Wildlife and Fisheries and any work done under a mineral lease from the State of Louisiana may necessarily be conducted in conformity with the rules and regulations promulgated by the said Department of Wildlife and Fisheries for Oyster Seed Bed Areas.

Applicant: Rebecca Case

Bidder	Cash Payment	Price/Acre	Rental	Oil	Gas	Other

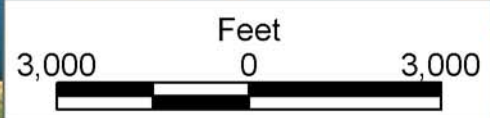
TERREBONNE PARISH



T20S - R14E

T21S - R14E

P.O.B.
X=2,103,756.01
Y=213,755.05



TR 03120077

Office of Mineral Resources, Acres: 1938 Tract Number: 35921

TRACT 35922 - Terrebonne Parish, Louisiana

All of the lands now or formerly constituting the beds and bottoms of all water bodies of every nature and description the title of which vests in the State of Louisiana, together with all islands arising therein and other lands formed by accretion or by reliction, where allowed by law, excepting tax adjudicated lands, and not presently under mineral lease on December 10, 2003, situated in Terrebonne Parish, Louisiana, and more particularly described as follows: Beginning at a point having Coordinates of X = 2,103,756.01 and Y = 213,755.05; thence North 88 degrees 53 minutes 59 seconds East 13,289.24 feet to a point having Coordinates of X = 2,117,042.80 and Y = 214,010.22; thence South 13,185.87 feet to a point having Coordinates of X = 2,117,042.80 and Y = 200,824.35; thence South 88 degrees 53 minutes 58 seconds West 13,121.37 feet to a point having Coordinates of X = 2,103,923.85 and Y = 200,572.32; thence North 00 degrees 43 minutes 46 seconds West 5,539.38 feet to a point on the South line of State Lease No. 725, as amended having Coordinates of X = 2,103,853.33 and Y = 206,111.25; thence North 89 degrees 51 minutes 24 seconds East 352.01 feet to the Southeast corner of said State Lease No. 725, having Coordinates of X = 2,104,205.34 and Y = 206,112.13; thence North 00 degrees 08 minutes 36 seconds West 464.80 feet to a point on the East line of said State Lease No. 725, having Coordinates X = 2,104,204.18 and Y = 206,576.92; thence Southeasterly along the boundary of State Lease No. 17857, a distance of 841.31 feet along a curve to the right with a radius of 5,850.00 feet and a chord bearing of South 67 degrees 33 minutes 51 seconds East 840.58 feet to a point along the boundary of said State Lease No. 17857, having Coordinates of X = 2,104,981.13 and Y = 206,256.11; thence South 65 degrees 06 minutes 25 seconds East 417.62 feet along the boundary of said State Lease No. 17857 having Coordinates X = 2,105,359.95 and Y = 206,080.32; thence East 54.86 feet to a point on the boundary of said State Lease No. 17857 having Coordinates of X = 2,105,414.81 and Y = 206,080.32; thence Northeasterly along the boundary of said State Lease No. 17857 a distance of 1,639.14 feet along a curve to the right with a radius of 2,720 feet and a chord bearing of North 53 degrees 49 minutes 54 seconds East 1,614.44 feet to a point along the boundary of said State Lease No. 17857 having Coordinates of X = 2,106,718.13 and Y = 207,033.10; thence Northwesterly along the boundary of said State Lease No. 17857 a distance of 3,128.25 feet along a curve to the left with a radius of 8,625.00 feet and a chord bearing of North 42 degrees 53 minutes 27 seconds West 3,111.13 feet to a point along the boundary of said State Lease No. 17857, having Coordinates of X = 2,104,600.68 and Y = 209,312.47; thence Northwesterly along the boundary of said State Lease No. 17857 a distance of 465.62 feet along a curve to the left with a radius of 6,555.00 feet and a chord bearing of North 55 degrees 14 minutes 09 seconds West 465.52 feet to a point on the boundary of said State Lease No. 17857, having Coordinates X = 2,104,218.25 and Y = 209,577.91; thence North 57 degrees 29 minutes 47 seconds West 25.63 feet to a point on the East line of said State Lease No. 725, having Coordinates X = 2,104,196.63 and Y = 209,591.68; thence North 00 degrees 08 minutes 36 seconds West 1,440.44 feet to a point on the East line of

said State Lease No. 725, having Coordinates X = 2,104,193.03 and Y = 211,032.11; thence North 00 degrees 08 minutes 36 seconds West 360.00 feet to a point at the Northeast corner of said State Lease No. 725, having Coordinates of X = 2,104,192.13 and Y = 211,392.11; thence South 89 degrees 51 minutes 24 seconds West 406.02 feet to a point on the North line of said State Lease No. 725, having Coordinates of X = 2,103,786.11 and Y = 211,391.10; thence North 00 degrees 43 minutes 46 seconds West 2,364.14 feet to the point of beginning, **LESS AND EXCEPT** any portion of State Lease No. 725 which may lie within the above described tract, containing approximately approximately **2,407 acres**, all as more particularly outlined on a plat on file in the Office of Mineral Resources, Department of Natural Resources. All bearings, distances and coordinates are based on Louisiana Coordinate System of 1927, (North or South Zone), where applicable.

NOTE: The above description of the Tract nominated for lease has been provided and corrected, where required, exclusively by the nomination party. Any mineral lease selected from this Tract and awarded by the Louisiana State Mineral Board shall be without warranty of any kind, either express, implied, or statutory, including, but not limited to, the implied warranties of merchantability and fitness for a particular purpose. Should the mineral lease awarded by the Louisiana State Mineral Board be subsequently modified, cancelled or abrogated due to the existence of conflicting leases, operating agreements, private claims or other future obligations or conditions which may affect all or any portion of the leased Tract, it shall not relieve the Lessee of the obligation to pay any bonus due thereon to the Louisiana State Mineral Board, nor shall the Louisiana State Mineral Board be obligated to refund any consideration paid by the Lessor prior to such modification, cancellation, or abrogation, including, but not limited to, bonuses, rentals and royalties.

NOTE: The State of Louisiana does hereby reserve, and this lease shall be subject to, the imprescriptible right of surface use in the nature of a servitude in favor of the Department of Natural Resources, including its Offices and Commissions, for the sole purpose of implementing, constructing, servicing and maintaining approved coastal zone management and/or restoration projects. Utilization of any and all rights derived under this lease by the mineral lessee, its agents, successors or assigns, shall not interfere with nor hinder the reasonable surface use by the Department of Natural Resources, its Offices or Commissions, as herein above reserved.

NOTE: The Department of Wildlife and Fisheries has designated certain areas in the coastal waters of the State of Louisiana as Oyster Seed Bed Areas. The exact location of those Seed Bed Areas must be obtained from the Department of Wildlife and Fisheries and any work done under a mineral lease from the State of Louisiana may necessarily be conducted in conformity with the rules and regulations promulgated by the said Department of Wildlife and Fisheries for Oyster Seed Bed Areas.

Applicant: Rebecca Case

Bidder	Cash Payment	Price/Acre	Rental	Oil	Gas	Other

