

TRACT 35903 - Portion of Block 56, Chandeleur Sound Area, St. Bernard Parish, Louisiana

All of the lands now or formerly constituting the beds and bottoms of all water bodies of every nature and description the title of which vests in the State of Louisiana, together with all islands arising therein and other lands formed by accretion or by reliction, where allowed by law, excepting tax adjudicated lands, and not presently under mineral lease on December 10, 2003, situated in St. Bernard Parish, Louisiana, and more particularly described as follows: Beginning at the Northwest corner of Block 56, Chandeleur Sound Area having Coordinates of X = 2,723,850.00 and Y = 410,830.00 thence East 14,750.00 feet to a point intersecting the East line of Block 56, being the Northeast corner of Block 56, having Coordinates of X = 2,738,600.00 and Y = 410,830.00; thence South 7,375.00 feet along the East line of Block 56, to a point having Coordinates of X = 2,738,600.00 and Y = 403,455.00, thence West 14,750.00 feet to a point intersecting the West Line of Block 56, to a point having Coordinates of X = 2,723,850.00 and Y = 403,455.00, thence North 7,375.00 feet along the West line of Block 41, Chandeleur Sound Area to the point of beginning, containing approximately **2,497.27 acres**, all as more particularly outlined on a plat on file in the Office of Mineral Resources, Department of Natural Resources. All bearings, distances and coordinates are based on Louisiana Coordinate System of 1927, (North or South Zone), where applicable.

NOTE: The above description of the Tract nominated for lease has been provided and corrected, where required, exclusively by the nomination party. Any mineral lease selected from this Tract and awarded by the Louisiana State Mineral Board shall be without warranty of any kind, either express, implied, or statutory, including, but not limited to, the implied warranties of merchantability and fitness for a particular purpose. Should the mineral lease awarded by the Louisiana State Mineral Board be subsequently modified, cancelled or abrogated due to the existence of conflicting leases, operating agreements, private claims or other future obligations or conditions which may affect all or any portion of the leased Tract, it shall not relieve the Lessee of the obligation to pay any bonus due thereon to the Louisiana State Mineral Board, nor shall the Louisiana State Mineral Board be obligated to refund any consideration paid by the Lessor prior to such modification, cancellation, or abrogation, including, but not limited to, bonuses, rentals and royalties.

NOTE: The Office of Mineral Resources will require a minimum bonus of \$230 per acre and a minimum royalty of 23%.

NOTE: The State of Louisiana does hereby reserve, and this lease shall be subject to, the imprescriptible right of surface use in the nature of a servitude in favor of the Department of Natural Resources, including its Offices and Commissions, for the sole purpose of implementing, constructing, servicing and maintaining approved coastal zone management and/or restoration projects. Utilization of any and all rights derived

under this lease by the mineral lessee, its agents, successors or assigns, shall not interfere with nor hinder the reasonable surface use by the Department of Natural Resources, its Offices or Commissions, as herein above reserved.

Applicant: Kristen Touchet

Bidder	Cash Payment	Price/ Acre	Rental	Oil	Gas	Other



BLOCK CS0036

ST BERNARD PARISH

BLOCK CS0057



BLOCK CS0037

BLOCK CS0056

CHANDELEUR SOUND AREA

BLOCK CS0038

P.O.B.
X=2,723,850.00
Y=410,830.00

BLOCK CS0055

TRACT 35904 - Portion of Block 52, Chandeleur Sound Area, St. Bernard Parish, Louisiana

All of the lands now or formerly constituting the beds and bottoms of all water bodies of every nature and description the title of which vests in the State of Louisiana, together with all islands arising therein and other lands formed by accretion or by reliction, where allowed by law, excepting tax adjudicated lands, and not presently under mineral lease on December 10, 2003, situated in St. Bernard Parish, Louisiana, and more particularly described as follows: Beginning at the Northwest corner of Block 52, Chandeleur Sound Area, having Coordinates of X = 2,664,850.00 and Y = 410,830.00; thence East 14,750.00 feet along the North line of said Block 52 to a point having Coordinates of X = 2,679,600.00 and Y = 410,830.00, being the Northeast corner of said Block 52, thence South 7,375.00 feet along the East line of said Block 52 to a point having Coordinates of X = 2,679,600.00 and Y = 403,455.00; thence West 14,750.00 feet to a point on the West line of said Block 52 having Coordinates of X = 2,664,850.00 and Y = 403,455.00; thence North 7,375.00 feet along the West line of said Block 52 to the point of beginning, containing approximately **2,497.27 acres**, all as more particularly outlined on a plat on file in the Office of Mineral Resources, Department of Natural Resources. All bearings, distances and coordinates are based on Louisiana Coordinate System of 1927, (North or South Zone), where applicable.

NOTE: The above description of the Tract nominated for lease has been provided and corrected, where required, exclusively by the nomination party. Any mineral lease selected from this Tract and awarded by the Louisiana State Mineral Board shall be without warranty of any kind, either express, implied, or statutory, including, but not limited to, the implied warranties of merchantability and fitness for a particular purpose. Should the mineral lease awarded by the Louisiana State Mineral Board be subsequently modified, cancelled or abrogated due to the existence of conflicting leases, operating agreements, private claims or other future obligations or conditions which may affect all or any portion of the leased Tract, it shall not relieve the Lessee of the obligation to pay any bonus due thereon to the Louisiana State Mineral Board, nor shall the Louisiana State Mineral Board be obligated to refund any consideration paid by the Lessor prior to such modification, cancellation, or abrogation, including, but not limited to, bonuses, rentals and royalties.

NOTE: The Office of Mineral Resources will require a minimum bonus of \$190 per acre and a minimum royalty of 22%.

NOTE: The State of Louisiana does hereby reserve, and this lease shall be subject to, the imprescriptible right of surface use in the nature of a servitude in favor of the Department of Natural Resources, including its Offices and Commissions, for the sole purpose of implementing, constructing, servicing and maintaining approved coastal zone management and/or restoration projects. Utilization of any and all rights derived under this lease by the mineral lessee, its agents, successors or assigns,

shall not interfere with nor hinder the reasonable surface use by the Department of Natural Resources, its Offices or Commissions, as herein above reserved.

Applicant: Kristen Touchet

Bidder	Cash Payment	Price/ Acre	Rental	Oil	Gas	Other



BLOCK CS0040

ST BERNARD PARISH

BLOCK CS0053

BLOCK CS0041

BLOCK CS0052

CHANDELEUR SOUND AREA

BLOCK CS0042

BLOCK CS0051

P.O.B.
X=2,664,850.00
Y=410,830.00



TRACT 35905 - Portion of Block 53, Chandeleur Sound Area, St. Bernard Parish, Louisiana

All of the lands now or formerly constituting the beds and bottoms of all water bodies of every nature and description the title of which vests in the State of Louisiana, together with all islands arising therein and other lands formed by accretion or by reliction, where allowed by law, excepting tax adjudicated lands, and not presently under mineral lease on December 10, 2003, situated in St. Bernard Parish, Louisiana, and more particularly described as follows: Beginning at the Northwest corner of Block 53, Chandeleur Sound Area, having Coordinates of X = 2,679,600.00 and Y = 410,830.00; thence East 14,750.00 feet along the North line of Block 53, Chandeleur Sound Area, to a point having Coordinates of X = 2,694,350.00 and Y = 410,830.00, being the Northeast corner of Block 53, Chandeleur Sound Area, thence South 7,375.00 feet along the East line of Block 53, Chandeleur Sound Area, to a point having Coordinates of X = 2,694,350.00 and Y = 403,455.00; thence West 14,750.00 feet to a point intersecting the West line of Block 53, Chandeleur Sound Area, having Coordinates of X = 2,679,600.00 and Y = 403,455.00; thence North 7,375.00 feet along the West line of Block 53, Chandeleur Sound Area, to the point of beginning, containing approximately **2,497.27 acres**, all as more particularly outlined on a plat on file in the Office of Mineral Resources, Department of Natural Resources. All bearings, distances and coordinates are based on Louisiana Coordinate System of 1927, (North or South Zone), where applicable.

NOTE: The above description of the Tract nominated for lease has been provided and corrected, where required, exclusively by the nomination party. Any mineral lease selected from this Tract and awarded by the Louisiana State Mineral Board shall be without warranty of any kind, either express, implied, or statutory, including, but not limited to, the implied warranties of merchantability and fitness for a particular purpose. Should the mineral lease awarded by the Louisiana State Mineral Board be subsequently modified, cancelled or abrogated due to the existence of conflicting leases, operating agreements, private claims or other future obligations or conditions which may affect all or any portion of the leased Tract, it shall not relieve the Lessee of the obligation to pay any bonus due thereon to the Louisiana State Mineral Board, nor shall the Louisiana State Mineral Board be obligated to refund any consideration paid by the Lessor prior to such modification, cancellation, or abrogation, including, but not limited to, bonuses, rentals and royalties.

NOTE: The Office of Mineral Resources will require a minimum bonus of \$190 per acre and a minimum royalty of 22%.

NOTE: The State of Louisiana does hereby reserve, and this lease shall be subject to, the imprescriptible right of surface use in the nature of a servitude in favor of the Department of Natural Resources, including its Offices and Commissions, for the sole purpose of implementing, constructing, servicing and maintaining approved coastal zone management

and/or restoration projects. Utilization of any and all rights derived under this lease by the mineral lessee, its agents, successors or assigns, shall not interfere with nor hinder the reasonable surface use by the Department of Natural Resources, its Offices or Commissions, as herein above reserved.

Applicant: Kristen Touchet

Bidder	Cash Payment	Price/ Acre	Rental	Oil	Gas	Other



BLOCK CS0039

BLOCK CS0054



BLOCK CS0040

BLOCK CS0053

CHANDELEUR SOUND AREA

ST BERNARD PARISH

BLOCK CS0041

BLOCK CS0052

P.O.B.
X=2,679,600.00
Y=410,830.00

TRACT 35906 - Portion of Block 56, Chandeleur Sound Area, St. Bernard Parish, Louisiana

All of the lands now or formerly constituting the beds and bottoms of all water bodies of every nature and description the title of which vests in the State of Louisiana, together with all islands arising therein and other lands formed by accretion or by reliction, where allowed by law, excepting tax adjudicated lands, and not presently under mineral lease on December 10, 2003, situated in St. Bernard Parish, Louisiana, and more particularly described as follows: Beginning at a point on the West line of Block 56, Chandeleur Sound Area, having Coordinates of X = 2,723,850.00 and Y = 403,455.00 thence East 14,750.00 feet to a point intersecting the East line of said Block 56, having Coordinates of X = 2,738,600.00 and Y = 403,455.00; thence South 7,375.00 feet along the East line of said Block 56, to a point having Coordinates of X = 2,738,600.00 and Y = 396,080.00, being the Southeast corner of said Block 56, thence West 14,750.00 feet along the South line of said Block 56, to a point having Coordinates of X = 2,723,850.00 and Y = 396,080.00, being the Southwest line of said Block 56, thence North 7,375.00 feet along the West line of said Block 56, to the point of beginning, containing approximately **2,497.27 acres**, all as more particularly outlined on a plat on file in the Office of Mineral Resources, Department of Natural Resources. All bearings, distances and coordinates are based on Louisiana Coordinate System of 1927, (North or South Zone), where applicable.

NOTE: The above description of the Tract nominated for lease has been provided and corrected, where required, exclusively by the nomination party. Any mineral lease selected from this Tract and awarded by the Louisiana State Mineral Board shall be without warranty of any kind, either express, implied, or statutory, including, but not limited to, the implied warranties of merchantability and fitness for a particular purpose. Should the mineral lease awarded by the Louisiana State Mineral Board be subsequently modified, cancelled or abrogated due to the existence of conflicting leases, operating agreements, private claims or other future obligations or conditions which may affect all or any portion of the leased Tract, it shall not relieve the Lessee of the obligation to pay any bonus due thereon to the Louisiana State Mineral Board, nor shall the Louisiana State Mineral Board be obligated to refund any consideration paid by the Lessor prior to such modification, cancellation, or abrogation, including, but not limited to, bonuses, rentals and royalties.

NOTE: The Office of Mineral Resources will require a minimum bonus of \$230 per acre and a minimum royalty of 23%.

NOTE: The State of Louisiana does hereby reserve, and this lease shall be subject to, the imprescriptible right of surface use in the nature of a servitude in favor of the Department of Natural Resources, including its Offices and Commissions, for the sole purpose of implementing, constructing, servicing and maintaining approved coastal zone management and/or restoration projects. Utilization of any and all rights derived

under this lease by the mineral lessee, its agents, successors or assigns, shall not interfere with nor hinder the reasonable surface use by the Department of Natural Resources, its Offices or Commissions, as herein above reserved.

Applicant: Kristen Touchet

Bidder	Cash Payment	Price/ Acre	Rental	Oil	Gas	Other



BLOCK CS0057

BLOCK CS0062



BLOCK CS0056

BLOCK CS0063

CHANDELEUR SOUND AREA

BLOCK CS0055

P.O.B.
X=2,723,850.00
Y=403,455.00

ST BERNARD PARISH

BLOCK CS0064

Office of Mineral Resources, Acres: 2497.27 Tract Number: 35906

2,497.27 +/- ACS.

TRACT 35907 - Portion of Block 61, Chandeleur Sound Area, St. Bernard Parish, Louisiana

All of the lands now or formerly constituting the beds and bottoms of all water bodies of every nature and description the title of which vests in the State of Louisiana, together with all islands arising therein and other lands formed by accretion or by reliction, where allowed by law, excepting tax adjudicated lands, and not presently under mineral lease on December 10, 2003, situated in St. Bernard Parish, Louisiana, and more particularly described as follows: Beginning at the Northeast corner of Block 61, Chandeleur Sound Area, having Coordinates of X = 2,768,100.00 and Y = 396,080.00; thence South 7,375.00 feet along the East line of said Block 61 to a point having Coordinates of X = 2,768,100.00 and Y = 388,705.00; thence West 5,400.00 feet to a point having Coordinates of X = 2,762,700.00 and Y = 388,705.00; thence North 7,375.00 feet to a point on the North line of said Block 61 having Coordinates of X = 2,762,700.00 and Y = 396,080.00; thence East 5,400.00 feet along the North line of said Block 61 to the point of beginning, containing **914.26 acres**, all as more particularly outlined on a plat on file in the Office of Mineral Resources, Department of Natural Resources. All bearings, distances and coordinates are based on Louisiana Coordinate System of 1927, (North or South Zone), where applicable.

NOTE: The above description of the Tract nominated for lease has been provided and corrected, where required, exclusively by the nomination party. Any mineral lease selected from this Tract and awarded by the Louisiana State Mineral Board shall be without warranty of any kind, either express, implied, or statutory, including, but not limited to, the implied warranties of merchantability and fitness for a particular purpose. Should the mineral lease awarded by the Louisiana State Mineral Board be subsequently modified, cancelled or abrogated due to the existence of conflicting leases, operating agreements, private claims or other future obligations or conditions which may affect all or any portion of the leased Tract, it shall not relieve the Lessee of the obligation to pay any bonus due thereon to the Louisiana State Mineral Board, nor shall the Louisiana State Mineral Board be obligated to refund any consideration paid by the Lessor prior to such modification, cancellation, or abrogation, including, but not limited to, bonuses, rentals and royalties.

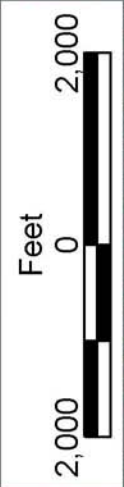
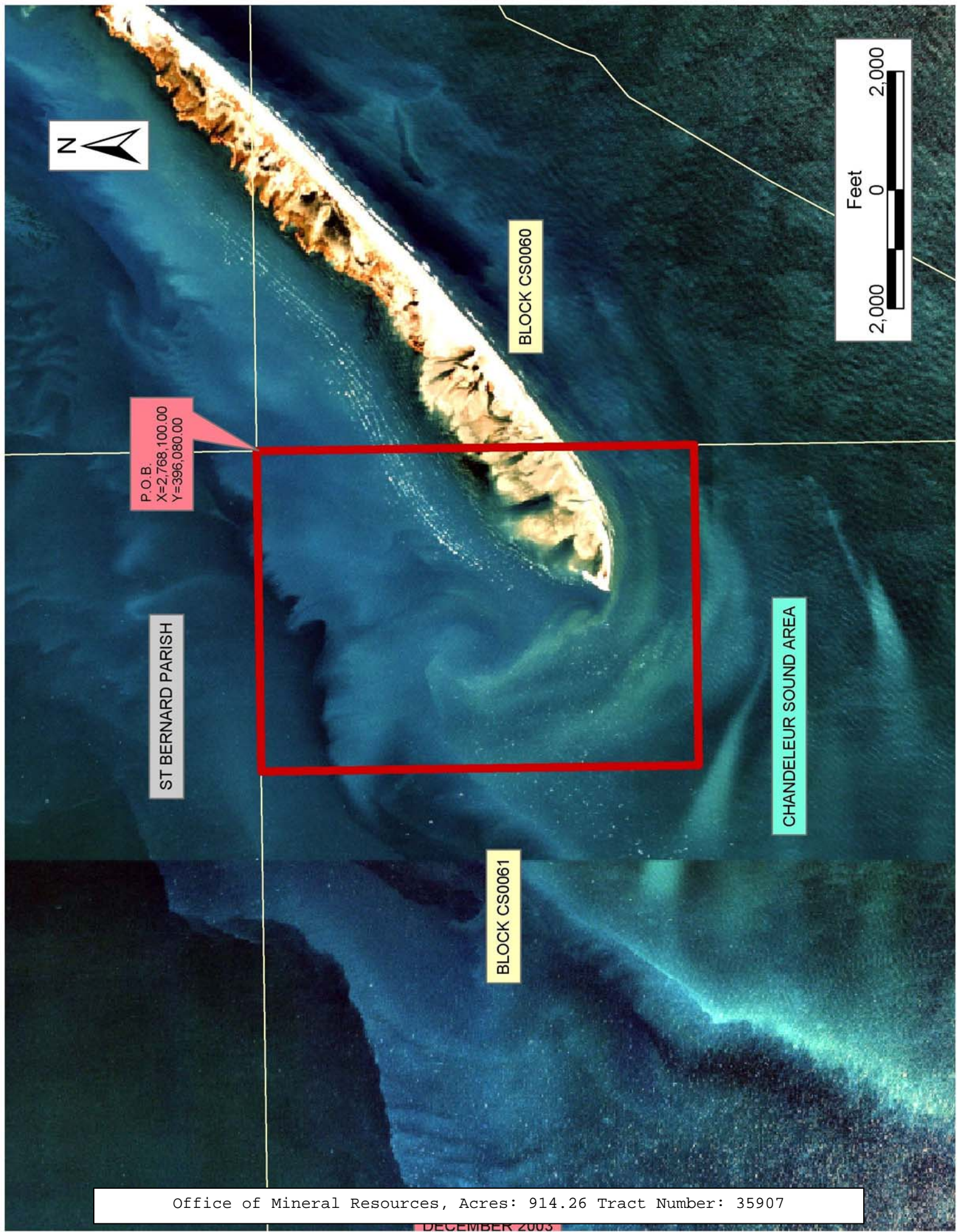
NOTE: The Office of Mineral Resources will require a minimum bonus of \$190 per acre and a minimum royalty of 22%.

NOTE: The State of Louisiana does hereby reserve, and this lease shall be subject to, the imprescriptible right of surface use in the nature of a servitude in favor of the Department of Natural Resources, including its Offices and Commissions, for the sole purpose of implementing, constructing, servicing and maintaining approved coastal zone management and/or restoration projects. Utilization of any and all rights derived under this lease by the mineral lessee, its agents, successors or assigns, shall not interfere with nor hinder the reasonable surface use by the

Department of Natural Resources, its Offices or Commissions, as herein above reserved.

Applicant: Encaladia Petroleum, LLC

Bidder	Cash Payment	Price/ Acre	Rental	Oil	Gas	Other



P.O.B.
X=2,768,100.00
Y=396,080.00

ST BERNARD PARISH

BLOCK CS0060

BLOCK CS0061

CHANDELEUR SOUND AREA

TRACT 35908 - Portion of Block 64, Chandeleur Sound Area, St. Bernard Parish, Louisiana

All of the lands now or formerly constituting the beds and bottoms of all water bodies of every nature and description the title of which vests in the State of Louisiana, together with all islands arising therein and other lands formed by accretion or by reliction, where allowed by law, excepting tax adjudicated lands, and not presently under mineral lease on December 10, 2003, situated in St. Bernard Parish, Louisiana, and more particularly described as follows: Beginning at a point on the North line of Block 64, Chandeleur Sound Area, having Coordinates of X = 2,716,475.00 and Y = 396,080.00, thence East 7,375.00 feet along the North line of said Block 64 to it's Northeast corner having Coordinates of X = 2,723,850.00 and Y = 396,080.00, thence South 14,750.00 feet along the East line of said Block 64 to it's Southeast corner having Coordinates of X = 2,723,850.00 and Y = 381,330.00, thence West 7,375.00 feet along the South line of said Block 64 to a point having Coordinates of X = 2,716,475.00 and Y = 381,330.00; thence North 14,750.00 feet to the point of beginning, containing approximately **2,497.27 acres**, all as more particularly outlined on a plat on file in the Office of Mineral Resources, Department of Natural Resources. All bearings, distances and coordinates are based on Louisiana Coordinate System of 1927, (North or South Zone), where applicable.

NOTE: The above description of the Tract nominated for lease has been provided and corrected, where required, exclusively by the nomination party. Any mineral lease selected from this Tract and awarded by the Louisiana State Mineral Board shall be without warranty of any kind, either express, implied, or statutory, including, but not limited to, the implied warranties of merchantability and fitness for a particular purpose. Should the mineral lease awarded by the Louisiana State Mineral Board be subsequently modified, cancelled or abrogated due to the existence of conflicting leases, operating agreements, private claims or other future obligations or conditions which may affect all or any portion of the leased Tract, it shall not relieve the Lessee of the obligation to pay any bonus due thereon to the Louisiana State Mineral Board, nor shall the Louisiana State Mineral Board be obligated to refund any consideration paid by the Lessor prior to such modification, cancellation, or abrogation, including, but not limited to, bonuses, rentals and royalties.

NOTE: The Office of Mineral Resources will require a minimum bonus of \$190 per acre and a minimum royalty of 22%.

NOTE: The State of Louisiana does hereby reserve, and this lease shall be subject to, the imprescriptible right of surface use in the nature of a servitude in favor of the Department of Natural Resources, including its Offices and Commissions, for the sole purpose of implementing, constructing, servicing and maintaining approved coastal zone management and/or restoration projects. Utilization of any and all rights derived under this lease by the mineral lessee, its agents, successors or assigns,

shall not interfere with nor hinder the reasonable surface use by the Department of Natural Resources, its Offices or Commissions, as herein above reserved.

Applicant: Kristen Touchet

Bidder	Cash Payment	Price/ Acre	Rental	Oil	Gas	Other



BLOCK CS0055

CHANDELEUR SOUND AREA

BLOCK CS0056

P.O.B.
X=2,716,475.00
Y=396,080.00

S.L. 17409

S.L. 17410

ST BERNARD PARISH

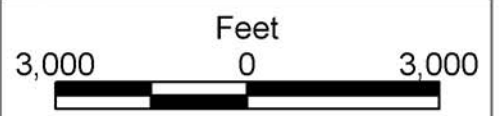
BLOCK CS0064

BLOCK CS0063

BLOCK BS0006

BRETON SOUND AREA

BLOCK BS0007



Office of Mineral Resources, Acres: 2497.27 Tract Number: 35908

2,497.27 ACRES

TRACT 35909 - Portion of Block 63, Chandeleur Sound Area, St. Bernard Parish, Louisiana

All of the lands now or formerly constituting the beds and bottoms of all water bodies of every nature and description the title of which vests in the State of Louisiana, together with all islands arising therein and other lands formed by accretion or by reliction, where allowed by law, excepting tax adjudicated lands, and not presently under mineral lease on December 10, 2003, situated in St. Bernard Parish, Louisiana, and more particularly described as follows: Beginning at the Northwest corner of Block 63, Chandeleur Sound Area, having Coordinates of X = 2,723,850.00 and Y = 396,080.00; thence East 14,750.00 feet to a point intersecting the East line of said Block 63, being the Northeast corner of said Block 63, having Coordinates of X = 2,738,600.00 and Y = 396,080.00; thence South 7,375.00 feet along the East line of said Block 63, to a point having Coordinates of X = 2,738,600.00 and Y = 388,705.00, thence West 14,750.00 feet to a point intersecting the West Line of said Block 63, to a point having Coordinates of X = 2,723,850.00 and Y = 388,705.00, thence North 7,375.00 feet along the West line of said Block 63, to the point of beginning, containing approximately **2,497.27 acres**, all as more particularly outlined on a plat on file in the Office of Mineral Resources, Department of Natural Resources. All bearings, distances and coordinates are based on Louisiana Coordinate System of 1927, (North or South Zone), where applicable.

NOTE: The above description of the Tract nominated for lease has been provided and corrected, where required, exclusively by the nomination party. Any mineral lease selected from this Tract and awarded by the Louisiana State Mineral Board shall be without warranty of any kind, either express, implied, or statutory, including, but not limited to, the implied warranties of merchantability and fitness for a particular purpose. Should the mineral lease awarded by the Louisiana State Mineral Board be subsequently modified, cancelled or abrogated due to the existence of conflicting leases, operating agreements, private claims or other future obligations or conditions which may affect all or any portion of the leased Tract, it shall not relieve the Lessee of the obligation to pay any bonus due thereon to the Louisiana State Mineral Board, nor shall the Louisiana State Mineral Board be obligated to refund any consideration paid by the Lessor prior to such modification, cancellation, or abrogation, including, but not limited to, bonuses, rentals and royalties.

NOTE: The Office of Mineral Resources will require a minimum bonus of \$190 per acre and a minimum royalty of 22%.

NOTE: The State of Louisiana does hereby reserve, and this lease shall be subject to, the imprescriptible right of surface use in the nature of a servitude in favor of the Department of Natural Resources, including its Offices and Commissions, for the sole purpose of implementing, constructing, servicing and maintaining approved coastal zone management and/or restoration projects. Utilization of any and all rights derived

under this lease by the mineral lessee, its agents, successors or assigns, shall not interfere with nor hinder the reasonable surface use by the Department of Natural Resources, its Offices or Commissions, as herein above reserved.

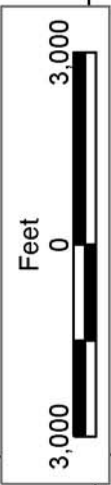
Applicant: Kristen Touchet

Bidder	Cash Payment	Price/ Acre	Rental	Oil	Gas	Other



BLOCK CS0057

BLOCK CS0062



ST BERNARD PARISH

BLOCK CS0056

BLOCK CS0063

CHANDELEUR SOUND AREA

BLOCK CS0055

BLOCK CS0064

P.O.B.
X=2,723,850.00
Y=396,080.00

TRACT 35910 - Portion of Block 63, Chandeleur Sound Area, St. Bernard Parish, Louisiana

All of the lands now or formerly constituting the beds and bottoms of all water bodies of every nature and description the title of which vests in the State of Louisiana, together with all islands arising therein and other lands formed by accretion or by reliction, where allowed by law, excepting tax adjudicated lands, and not presently under mineral lease on December 10, 2003, situated in St. Bernard Parish, Louisiana, and more particularly described as follows: Beginning at a point on the West line of Block 63, Chandeleur Sound Area, having Coordinates of X = 2,723,850.00 and Y = 388,705.00 thence East 14,750.00 feet to a point intersecting the East line of said Block 63, having Coordinates of X = 2,738,600.00 and Y = 388,705.00; thence South 7,375.00 feet along the East line of said Block 63, being the Southeast corner of said Block 63, to a point having Coordinates of X = 2,738,600.00 and Y = 381,330.00, thence West 14,750.00 feet to a point intersecting the West Line of said Block 63, being the Southwest corner of said Block 63, to a point having Coordinates of X = 2,723,850.00 and Y = 381,330.00, thence North 7,375.00 feet along the West line of said Block 63, to the point of beginning, containing approximately **2,497.27 acres**, all as more particularly outlined on a plat on file in the Office of Mineral Resources, Department of Natural Resources. All bearings, distances and coordinates are based on Louisiana Coordinate System of 1927, (North or South Zone), where applicable.

NOTE: The above description of the Tract nominated for lease has been provided and corrected, where required, exclusively by the nomination party. Any mineral lease selected from this Tract and awarded by the Louisiana State Mineral Board shall be without warranty of any kind, either express, implied, or statutory, including, but not limited to, the implied warranties of merchantability and fitness for a particular purpose. Should the mineral lease awarded by the Louisiana State Mineral Board be subsequently modified, cancelled or abrogated due to the existence of conflicting leases, operating agreements, private claims or other future obligations or conditions which may affect all or any portion of the leased Tract, it shall not relieve the Lessee of the obligation to pay any bonus due thereon to the Louisiana State Mineral Board, nor shall the Louisiana State Mineral Board be obligated to refund any consideration paid by the Lessor prior to such modification, cancellation, or abrogation, including, but not limited to, bonuses, rentals and royalties.

NOTE: The Office of Mineral Resources will require a minimum bonus of \$190 per acre and a minimum royalty of 22%.

NOTE: The State of Louisiana does hereby reserve, and this lease shall be subject to, the imprescriptible right of surface use in the nature of a servitude in favor of the Department of Natural Resources, including its Offices and Commissions, for the sole purpose of implementing, constructing, servicing and maintaining approved coastal zone management and/or restoration projects. Utilization of any and all rights derived

under this lease by the mineral lessee, its agents, successors or assigns, shall not interfere with nor hinder the reasonable surface use by the Department of Natural Resources, its Offices or Commissions, as herein above reserved.

Applicant: Kristen Touchet

Bidder	Cash Payment	Price/ Acre	Rental	Oil	Gas	Other



ST BERNARD PARISH

BLOCK CS0062

BLOCK BS0008



BLOCK CS0063

BLOCK BS0007

CHANDELEUR SOUND AREA

BRETON SOUND AREA

BLOCK CS0064

BLOCK BS0006

P.O.B.
X=2,723,850.00
Y=388,705.00

TRACT 35911 - St. Mary Parish, Louisiana

All of the lands now or formerly constituting the beds and bottoms of all water bodies of every nature and description the title of which vests in the State of Louisiana, together with all islands arising therein and other lands formed by accretion or by reliction, where allowed by law, excepting tax adjudicated lands, and not presently under mineral lease on December 10, 2003, situated in St. Mary Parish, Louisiana, and more particularly described as follows: Beginning at a point having Coordinates of X = 2,027,737.91 and Y = 392,864.69; thence East 4,895.54 feet to a point having Coordinates of X = 2,032,633.45 and Y = 392,864.69; thence South 17,519.85 feet to a point having Coordinates of X = 2,032,633.45 and Y = 375,344.84; thence West 4,895.54 feet to a point having Coordinates of X = 2,027,737.91 and Y = 375,344.84; thence North 17,519.85 to the point of beginning, containing approximately **221 acres**, all as more particularly outlined on a plat on file in the Office of Mineral Resources, Department of Natural Resources. All bearings, distances and coordinates are based on Louisiana Coordinate System of 1927, (North or South Zone), where applicable.

NOTE: The above description of the Tract nominated for lease has been provided and corrected, where required, exclusively by the nomination party. Any mineral lease selected from this Tract and awarded by the Louisiana State Mineral Board shall be without warranty of any kind, either express, implied, or statutory, including, but not limited to, the implied warranties of merchantability and fitness for a particular purpose. Should the mineral lease awarded by the Louisiana State Mineral Board be subsequently modified, cancelled or abrogated due to the existence of conflicting leases, operating agreements, private claims or other future obligations or conditions which may affect all or any portion of the leased Tract, it shall not relieve the Lessee of the obligation to pay any bonus due thereon to the Louisiana State Mineral Board, nor shall the Louisiana State Mineral Board be obligated to refund any consideration paid by the Lessor prior to such modification, cancellation, or abrogation, including, but not limited to, bonuses, rentals and royalties.

NOTE: The State of Louisiana does hereby reserve, and this lease shall be subject to, the imprescriptible right of surface use in the nature of a servitude in favor of the Department of Natural Resources, including its Offices and Commissions, for the sole purpose of implementing, constructing, servicing and maintaining approved coastal zone management and/or restoration projects. Utilization of any and all rights derived under this lease by the mineral lessee, its agents, successors or assigns, shall not interfere with nor hinder the reasonable surface use by the Department of Natural Resources, its Offices or Commissions, as herein above reserved.

Applicant: Chris Roy

Bidder	Cash Payment	Price/ Acre	Rental	Oil	Gas	Other



ST MARTIN PARISH



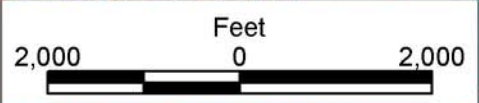
P.O.B.
X=2,027,737.91
Y=392,864.69

T15S - R12E

SIX MILE LAKE

LOWER
ATCHAFALAYA
RIVER

ST MARY PARISH



Office of Mineral Resources, Acres: 221 Tract Number: 35911

TRACT 35912 - St. Mary Parish, Louisiana

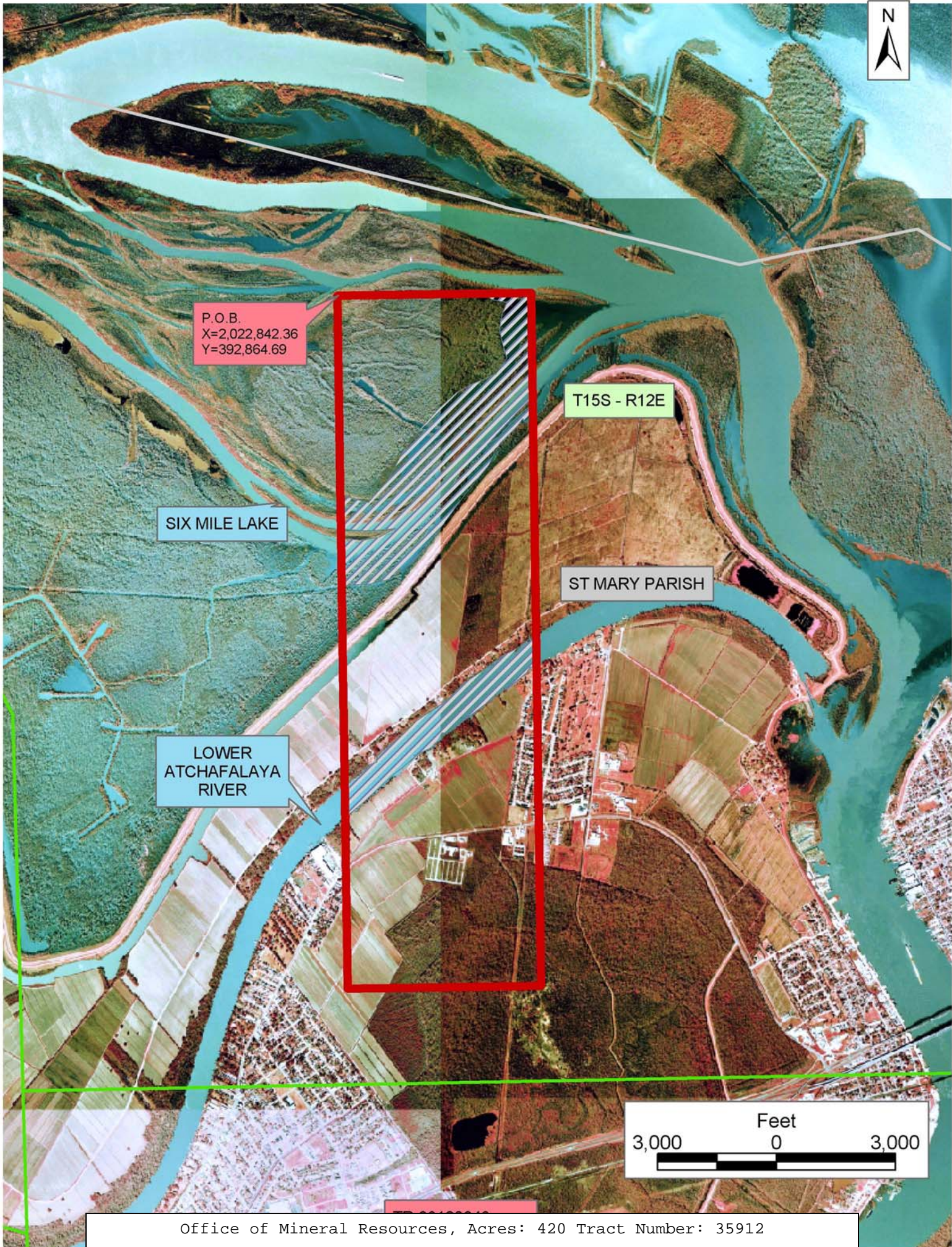
All of the lands now or formerly constituting the beds and bottoms of all water bodies of every nature and description the title of which vests in the State of Louisiana, together with all islands arising therein and other lands formed by accretion or by reliction, where allowed by law, excepting tax adjudicated lands, and not presently under mineral lease on December 10, 2003, situated in St. Mary Parish, Louisiana, and more particularly described as follows: Beginning at a point having Coordinates of X = 2,022,842.36 and Y = 392,864.69; thence East 4,895.55 feet to a point having Coordinates of X = 2,027,737.91 and Y = 392,864.69; thence South 17,519.85 feet to a point having Coordinates of X = 2,027,737.91 and Y = 375,344.84; thence West 4,895.55 feet to a point having Coordinates of X = 2,022,842.36 and Y = 375,344.84; thence North 17,519.85 to the point of beginning, containing approximately **420 acres**, all as more particularly outlined on a plat on file in the Office of Mineral Resources, Department of Natural Resources. All bearings, distances and coordinates are based on Louisiana Coordinate System of 1927, (North or South Zone), where applicable.

NOTE: The above description of the Tract nominated for lease has been provided and corrected, where required, exclusively by the nomination party. Any mineral lease selected from this Tract and awarded by the Louisiana State Mineral Board shall be without warranty of any kind, either express, implied, or statutory, including, but not limited to, the implied warranties of merchantability and fitness for a particular purpose. Should the mineral lease awarded by the Louisiana State Mineral Board be subsequently modified, cancelled or abrogated due to the existence of conflicting leases, operating agreements, private claims or other future obligations or conditions which may affect all or any portion of the leased Tract, it shall not relieve the Lessee of the obligation to pay any bonus due thereon to the Louisiana State Mineral Board, nor shall the Louisiana State Mineral Board be obligated to refund any consideration paid by the Lessor prior to such modification, cancellation, or abrogation, including, but not limited to, bonuses, rentals and royalties.

NOTE: The State of Louisiana does hereby reserve, and this lease shall be subject to, the imprescriptible right of surface use in the nature of a servitude in favor of the Department of Natural Resources, including its Offices and Commissions, for the sole purpose of implementing, constructing, servicing and maintaining approved coastal zone management and/or restoration projects. Utilization of any and all rights derived under this lease by the mineral lessee, its agents, successors or assigns, shall not interfere with nor hinder the reasonable surface use by the Department of Natural Resources, its Offices or Commissions, as herein above reserved.

Applicant: Chris Roy

Bidder	Cash Payment	Price/ Acre	Rental	Oil	Gas	Other



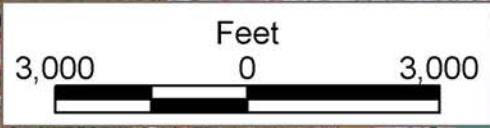
P.O.B.
X=2,022,842.36
Y=392,864.69

SIX MILE LAKE

LOWER
ATCHAFALAYA
RIVER

T15S - R12E

ST MARY PARISH



Office of Mineral Resources, Acres: 420 Tract Number: 35912