

TRACT 35893 - Portion of Blocks 23, and 24, Chandeleur Sound Area, St. Bernard Parish, Louisiana

All of the lands now or formerly constituting the beds and bottoms of all water bodies of every nature and description the title of which vests in the State of Louisiana, together with all islands arising therein and other lands formed by accretion or by reliction, where allowed by law, excepting tax adjudicated lands, and not presently under mineral lease on December 10, 2003, situated in St. Bernard Parish, Louisiana, and more particularly described as follows: Beginning at a point within Block 23, Chandeleur Sound Area, having Coordinates of X = 2,630,274.00 and Y = 435,157.00; thence East 17,781.00 feet to a point within Block 24, having Coordinates of X = 2,648,055.00 and Y = 435,157.00; thence South 5,589.00 feet to a point having Coordinates of X = 2,648,055.00 and Y = 429,568.00; thence West 17,781.00 feet to a point within said Block 23, having Coordinates of X = 2,630,274.00 and Y = 429,568.00; thence North 5,589.00 feet to the point of beginning, containing approximately **1,866 acres**, all as more particularly outlined on a plat on file in the Office of Mineral Resources, Department of Natural Resources. All bearings, distances and coordinates are based on Louisiana Coordinate System of 1927, (North or South Zone), where applicable.

NOTE: The above description of the Tract nominated for lease has been provided and corrected, where required, exclusively by the nomination party. Any mineral lease selected from this Tract and awarded by the Louisiana State Mineral Board shall be without warranty of any kind, either express, implied, or statutory, including, but not limited to, the implied warranties of merchantability and fitness for a particular purpose. Should the mineral lease awarded by the Louisiana State Mineral Board be subsequently modified, cancelled or abrogated due to the existence of conflicting leases, operating agreements, private claims or other future obligations or conditions which may affect all or any portion of the leased Tract, it shall not relieve the Lessee of the obligation to pay any bonus due thereon to the Louisiana State Mineral Board, nor shall the Louisiana State Mineral Board be obligated to refund any consideration paid by the Lessor prior to such modification, cancellation, or abrogation, including, but not limited to, bonuses, rentals and royalties.

NOTE: The Office of Mineral Resources will require a minimum bonus of \$190 per acre and a minimum royalty of 22%.

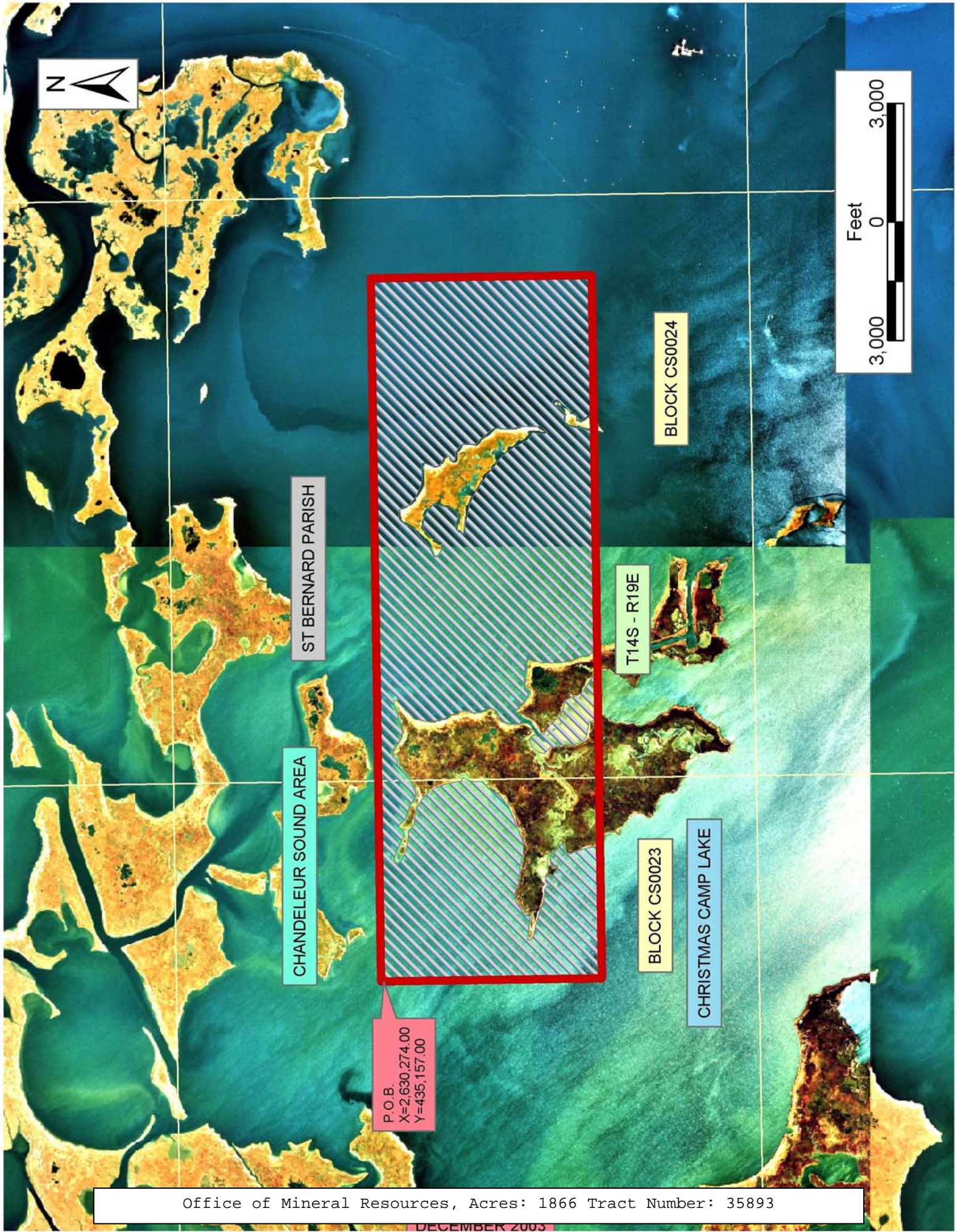
NOTE: The State of Louisiana does hereby reserve, and this lease shall be subject to, the imprescriptible right of surface use in the nature of a servitude in favor of the Department of Natural Resources, including its Offices and Commissions, for the sole purpose of implementing, constructing, servicing and maintaining approved coastal zone management and/or restoration projects. Utilization of any and all rights derived under this lease by the mineral lessee, its agents, successors or assigns, shall not interfere with nor hinder the reasonable surface use by the

Department of Natural Resources, its Offices or Commissions, as herein above reserved.

NOTE: The Department of Wildlife and Fisheries has designated certain areas in the coastal waters of the State of Louisiana as Oyster Seed Bed Areas. The exact location of those Seed Bed Areas must be obtained from the Department of Wildlife and Fisheries and any work done under a mineral lease from the State of Louisiana may necessarily be conducted in conformity with the rules and regulations promulgated by the said Department of Wildlife and Fisheries for Oyster Seed Bed Areas.

Applicant: Kare-Sue Energy, Inc.

Bidder	Cash Payment	Price/ Acre	Rental	Oil	Gas	Other



TRACT 35894 - Portion of Block 30, Chandeleur Sound Area, St. Bernard Parish, Louisiana

All of the lands now or formerly constituting the beds and bottoms of all water bodies of every nature and description the title of which vests in the State of Louisiana, together with all islands arising therein and other lands formed by accretion or by reliction, where allowed by law, excepting tax adjudicated lands, and not presently under mineral lease on December 10, 2003, situated in St. Bernard Parish, Louisiana, and more particularly described as follows: Beginning at a point on the West line of Block 30, Chandeleur Sound Area, having Coordinates of X = 2,723,850.00 and Y = 432,955.00 thence East 14,750.00 feet to a point intersecting the East line of said Block 30, having Coordinates of X = 2,738,600.00 and Y = 432,955.00; thence South 7,375.00 feet along the East line of said Block 30, to a point having Coordinates of X = 2,738,600.00 and Y = 425,580.00, being the Southeast corner of said Block 30, thence West 14,750.00 feet along the South line of said Block 30, to a point having Coordinates of X = 2,723,850.00 and Y = 425,580.00, being the Southwest corner of said Block 30, thence North 7,375.00 feet along the West line of Block 30, to the point of beginning, containing approximately **2,497.27 acres**, all as more particularly outlined on a plat on file in the Office of Mineral Resources, Department of Natural Resources. All bearings, distances and coordinates are based on Louisiana Coordinate System of 1927, (North or South Zone), where applicable.

NOTE: The above description of the Tract nominated for lease has been provided and corrected, where required, exclusively by the nomination party. Any mineral lease selected from this Tract and awarded by the Louisiana State Mineral Board shall be without warranty of any kind, either express, implied, or statutory, including, but not limited to, the implied warranties of merchantability and fitness for a particular purpose. Should the mineral lease awarded by the Louisiana State Mineral Board be subsequently modified, cancelled or abrogated due to the existence of conflicting leases, operating agreements, private claims or other future obligations or conditions which may affect all or any portion of the leased Tract, it shall not relieve the Lessee of the obligation to pay any bonus due thereon to the Louisiana State Mineral Board, nor shall the Louisiana State Mineral Board be obligated to refund any consideration paid by the Lessor prior to such modification, cancellation, or abrogation, including, but not limited to, bonuses, rentals and royalties.

NOTE: The Office of Mineral Resources will require a minimum bonus of \$230 per acre and a minimum royalty of 23%.

NOTE: The State of Louisiana does hereby reserve, and this lease shall be subject to, the imprescriptible right of surface use in the nature of a servitude in favor of the Department of Natural Resources, including its Offices and Commissions, for the sole purpose of implementing, constructing, servicing and maintaining approved coastal zone management and/or restoration projects. Utilization of any and all rights derived

under this lease by the mineral lessee, its agents, successors or assigns, shall not interfere with nor hinder the reasonable surface use by the Department of Natural Resources, its Offices or Commissions, as herein above reserved.

Applicant: Kristen Touchet

Bidder	Cash Payment	Price/ Acre	Rental	Oil	Gas	Other

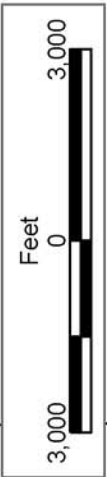


BLOCK CS0031

CHANDELEUR SOUND AREA

S.L. 17583

BLOCK CS0036



BLOCK CS0030

BLOCK CS0037

ST BERNARD PARISH

P.O.B.
X=2,723,850.00
Y=432,955.00

BLOCK CS0029

BLOCK CS0038

TRACT 35895 - Portion of Blocks 23, 24, 43, and 44, Chandeleur Sound Area, St. Bernard Parish, Louisiana

All of the lands now or formerly constituting the beds and bottoms of all water bodies of every nature and description the title of which vests in the State of Louisiana, together with all islands arising therein and other lands formed by accretion or by reliction, where allowed by law, excepting tax adjudicated lands, and not presently under mineral lease on December 10, 2003, situated in St. Bernard Parish, Louisiana, and more particularly described as follows: Beginning at a point within Block 44, Chandeleur Sound Area, having Coordinates of X = 2,630,274.00 and Y = 423,979.00; thence North 5,589.00 feet to a point within Block 23, having Coordinates of X = 2,630,274.00 and Y = 429,568.00; thence East 17,781.00 feet to a point within Block 24, having Coordinates of X = 2,648,055.00 and Y = 429,568.00; thence South 5,589.00 feet to a point within Block 43, having Coordinates of X = 2,648,055.00 and Y = 423,979.00; thence West 17,781.00 feet to the point of beginning, containing approximately **1,995 acres**, all as more particularly outlined on a plat on file in the Office of Mineral Resources, Department of Natural Resources. All bearings, distances and coordinates are based on Louisiana Coordinate System of 1927, (North or South Zone), where applicable.

NOTE: The above description of the Tract nominated for lease has been provided and corrected, where required, exclusively by the nomination party. Any mineral lease selected from this Tract and awarded by the Louisiana State Mineral Board shall be without warranty of any kind, either express, implied, or statutory, including, but not limited to, the implied warranties of merchantability and fitness for a particular purpose. Should the mineral lease awarded by the Louisiana State Mineral Board be subsequently modified, cancelled or abrogated due to the existence of conflicting leases, operating agreements, private claims or other future obligations or conditions which may affect all or any portion of the leased Tract, it shall not relieve the Lessee of the obligation to pay any bonus due thereon to the Louisiana State Mineral Board, nor shall the Louisiana State Mineral Board be obligated to refund any consideration paid by the Lessor prior to such modification, cancellation, or abrogation, including, but not limited to, bonuses, rentals and royalties.

NOTE: The Office of Mineral Resources will require a minimum bonus of \$190 per acre and a minimum royalty of 22%.

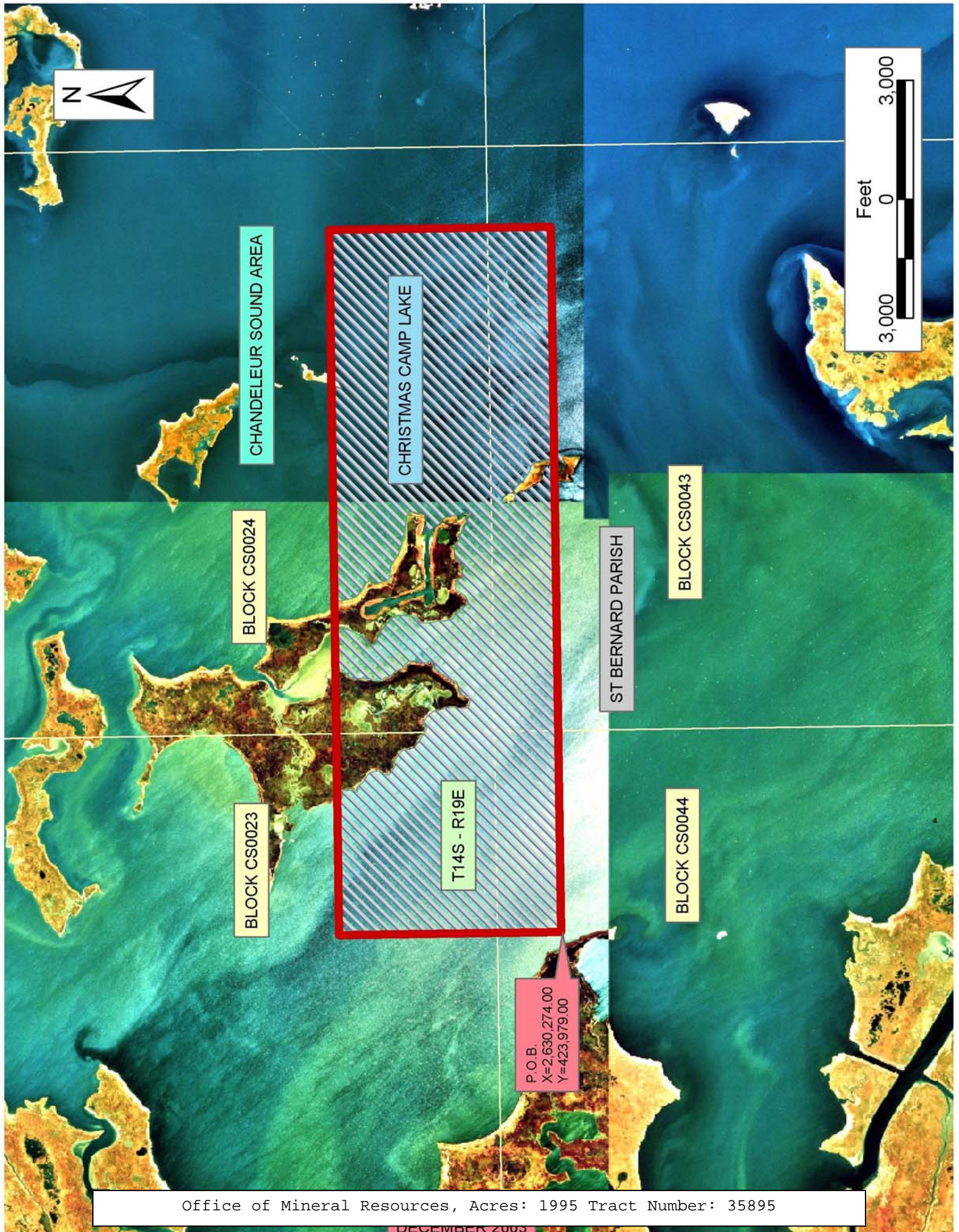
NOTE: The State of Louisiana does hereby reserve, and this lease shall be subject to, the imprescriptible right of surface use in the nature of a servitude in favor of the Department of Natural Resources, including its Offices and Commissions, for the sole purpose of implementing, constructing, servicing and maintaining approved coastal zone management and/or restoration projects. Utilization of any and all rights derived under this lease by the mineral lessee, its agents, successors or assigns, shall not interfere with nor hinder the reasonable surface use by the

Department of Natural Resources, its Offices or Commissions, as herein above reserved.

NOTE: The Department of Wildlife and Fisheries has designated certain areas in the coastal waters of the State of Louisiana as Oyster Seed Bed Areas. The exact location of those Seed Bed Areas must be obtained from the Department of Wildlife and Fisheries and any work done under a mineral lease from the State of Louisiana may necessarily be conducted in conformity with the rules and regulations promulgated by the said Department of Wildlife and Fisheries for Oyster Seed Bed Areas.

Applicant: Kare-Sue Energy, Inc.

Bidder	Cash Payment	Price/ Acre	Rental	Oil	Gas	Other



TRACT 35896 - Portion of Block 38, Chandeleur Sound Area, St. Bernard Parish, Louisiana

All of the lands now or formerly constituting the beds and bottoms of all water bodies of every nature and description the title of which vests in the State of Louisiana, together with all islands arising therein and other lands formed by accretion or by reliction, where allowed by law, excepting tax adjudicated lands, and not presently under mineral lease on December 10, 2003, situated in St. Bernard Parish, Louisiana, and more particularly described as follows: Beginning at a point on the North line of Block 38, Chandeleur Sound Area, having Coordinates of X = 2,716,475.00 and Y = 425,580.00, thence East 7,375.00 feet along the North line of said Block 38, to a point having Coordinates of X = 2,723,850.00 and Y = 425,580.00, being the Northeast line of said Block 38, thence South 14,750.00 feet along the East line of said Block 38, to a point having Coordinates of X = 2,723,850.00 and Y = 410,830.00, being the Southeast corner of said Block 38, thence West 7,375.00 feet along the South line of said Block 38, to a point having Coordinates of X = 2,716,475.00 and Y = 410,830.00; thence North 14,750.00 feet to the point of beginning, containing approximately **2,497.27 acres**, all as more particularly outlined on a plat on file in the Office of Mineral Resources, Department of Natural Resources. All bearings, distances and coordinates are based on Louisiana Coordinate System of 1927, (North or South Zone), where applicable.

NOTE: The above description of the Tract nominated for lease has been provided and corrected, where required, exclusively by the nomination party. Any mineral lease selected from this Tract and awarded by the Louisiana State Mineral Board shall be without warranty of any kind, either express, implied, or statutory, including, but not limited to, the implied warranties of merchantability and fitness for a particular purpose. Should the mineral lease awarded by the Louisiana State Mineral Board be subsequently modified, cancelled or abrogated due to the existence of conflicting leases, operating agreements, private claims or other future obligations or conditions which may affect all or any portion of the leased Tract, it shall not relieve the Lessee of the obligation to pay any bonus due thereon to the Louisiana State Mineral Board, nor shall the Louisiana State Mineral Board be obligated to refund any consideration paid by the Lessor prior to such modification, cancellation, or abrogation, including, but not limited to, bonuses, rentals and royalties.

NOTE: The Office of Mineral Resources will require a minimum bonus of \$230 per acre and a minimum royalty of 23%.

NOTE: The State of Louisiana does hereby reserve, and this lease shall be subject to, the imprescriptible right of surface use in the nature of a servitude in favor of the Department of Natural Resources, including its Offices and Commissions, for the sole purpose of implementing, constructing, servicing and maintaining approved coastal zone management and/or restoration projects. Utilization of any and all rights derived

under this lease by the mineral lessee, its agents, successors or assigns, shall not interfere with nor hinder the reasonable surface use by the Department of Natural Resources, its Offices or Commissions, as herein above reserved.

Applicant: Kristen Touchet

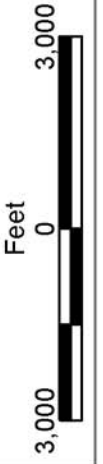
Bidder	Cash Payment	Price/ Acre	Rental	Oil	Gas	Other



BLOCK CS0030

BLOCK CS0037

BLOCK CS0056



BLOCK CS0029

P.O.B.
X=2,716.475.00
Y=425.580.00

BLOCK CS0038

BLOCK CS0055

BLOCK CS0028

CHANDELEUR
SOUND AREA

BLOCK CS0039

ST BERNARD PARISH

BLOCK CS0054

TRACT 35897 - Portion of Block 37, Chandeleur Sound Area, St. Bernard Parish, Louisiana

All of the lands now or formerly constituting the beds and bottoms of all water bodies of every nature and description the title of which vests in the State of Louisiana, together with all islands arising therein and other lands formed by accretion or by reliction, where allowed by law, excepting tax adjudicated lands, and not presently under mineral lease on December 10, 2003, situated in St. Bernard Parish, Louisiana, and more particularly described as follows: Beginning at a point having Coordinates of X = 2,723,850.00 and Y = 425,580.00, being the Northwest corner of Block 37, Chandeleur Sound Area, thence East 14,750.00 feet along the North line of said Block 37, to a point having Coordinates of X = 2,738,600.00 and Y = 425,580.00, being the Northeast corner of said Block 37, thence South 7,375.00 feet along the East line of said Block 37, to a point having Coordinates of X = 2,738,600.00 and Y = 418,205.00; thence West 14,750.00 feet to a point intersecting the West line of said Block 37, having Coordinates of X = 2,723,850.00 and Y = 418,205.00; thence North 7,375.00 feet along the West line of said Block 37, to the point of beginning, containing approximately **2,497.27 acres**, all as more particularly outlined on a plat on file in the Office of Mineral Resources, Department of Natural Resources. All bearings, distances and coordinates are based on Louisiana Coordinate System of 1927, (North or South Zone), where applicable.

NOTE: The above description of the Tract nominated for lease has been provided and corrected, where required, exclusively by the nomination party. Any mineral lease selected from this Tract and awarded by the Louisiana State Mineral Board shall be without warranty of any kind, either express, implied, or statutory, including, but not limited to, the implied warranties of merchantability and fitness for a particular purpose. Should the mineral lease awarded by the Louisiana State Mineral Board be subsequently modified, cancelled or abrogated due to the existence of conflicting leases, operating agreements, private claims or other future obligations or conditions which may affect all or any portion of the leased Tract, it shall not relieve the Lessee of the obligation to pay any bonus due thereon to the Louisiana State Mineral Board, nor shall the Louisiana State Mineral Board be obligated to refund any consideration paid by the Lessor prior to such modification, cancellation, or abrogation, including, but not limited to, bonuses, rentals and royalties.

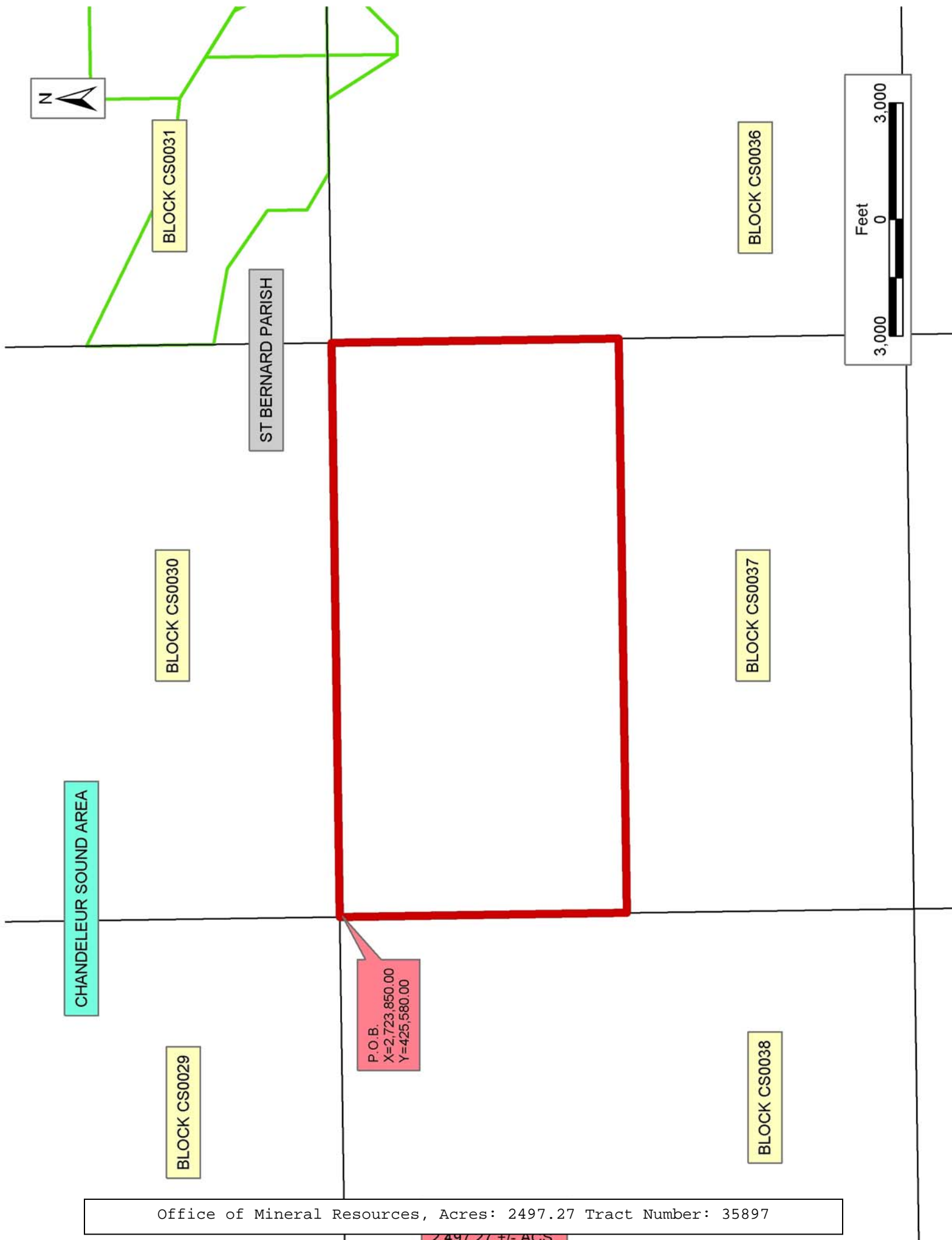
NOTE: The Office of Mineral Resources will require a minimum bonus of \$230 per acre and a minimum royalty of 23%.

NOTE: The State of Louisiana does hereby reserve, and this lease shall be subject to, the imprescriptible right of surface use in the nature of a servitude in favor of the Department of Natural Resources, including its Offices and Commissions, for the sole purpose of implementing, constructing, servicing and maintaining approved coastal zone management and/or restoration projects. Utilization of any and all rights derived

under this lease by the mineral lessee, its agents, successors or assigns, shall not interfere with nor hinder the reasonable surface use by the Department of Natural Resources, its Offices or Commissions, as herein above reserved.

Applicant: Kristen Touchet

Bidder	Cash Payment	Price/ Acre	Rental	Oil	Gas	Other



TRACT 35898 - Portion of Blocks 43, and 44, Chandeleur Sound Area, St. Bernard Parish, Louisiana

All of the lands now or formerly constituting the beds and bottoms of all water bodies of every nature and description the title of which vests in the State of Louisiana, together with all islands arising therein and other lands formed by accretion or by reliction, where allowed by law, excepting tax adjudicated lands, and not presently under mineral lease on December 10, 2003, situated in St. Bernard Parish, Louisiana, and more particularly described as follows: Beginning at a point within Block 44, Chandeleur Sound Area, having Coordinates of X = 2,630,274.00 and Y = 423,979.00; thence East 17,781.00 feet to a point within Block 43, having Coordinates of X = 2,648,055.00 and Y = 423,979.00; thence South 5,589.00 feet to a point having Coordinates of X = 2,648,055.00 and Y = 418,390.00; thence West 17,781.00 feet to a point within said Block 44, having Coordinates of X = 2,630,274.00 and Y = 418,390.00; thence North 5,589.00 feet to the point of beginning, containing approximately **2,273 acres**, all as more particularly outlined on a plat on file in the Office of Mineral Resources, Department of Natural Resources. All bearings, distances and coordinates are based on Louisiana Coordinate System of 1927, (North or South Zone), where applicable.

NOTE: The above description of the Tract nominated for lease has been provided and corrected, where required, exclusively by the nomination party. Any mineral lease selected from this Tract and awarded by the Louisiana State Mineral Board shall be without warranty of any kind, either express, implied, or statutory, including, but not limited to, the implied warranties of merchantability and fitness for a particular purpose. Should the mineral lease awarded by the Louisiana State Mineral Board be subsequently modified, cancelled or abrogated due to the existence of conflicting leases, operating agreements, private claims or other future obligations or conditions which may affect all or any portion of the leased Tract, it shall not relieve the Lessee of the obligation to pay any bonus due thereon to the Louisiana State Mineral Board, nor shall the Louisiana State Mineral Board be obligated to refund any consideration paid by the Lessor prior to such modification, cancellation, or abrogation, including, but not limited to, bonuses, rentals and royalties.

NOTE: The Office of Mineral Resources will require a minimum bonus of \$190 per acre and a minimum royalty of 22%.

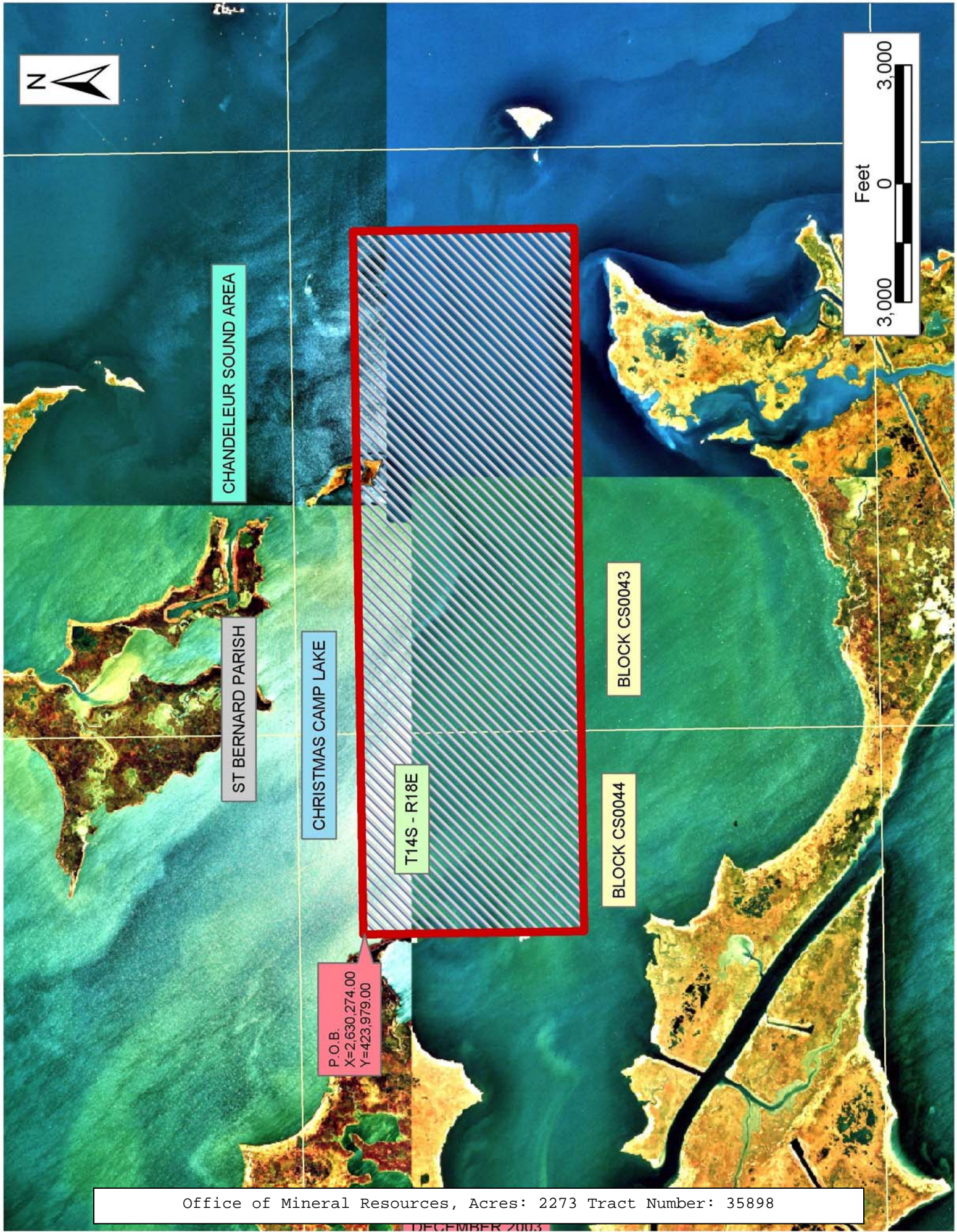
NOTE: The State of Louisiana does hereby reserve, and this lease shall be subject to, the imprescriptible right of surface use in the nature of a servitude in favor of the Department of Natural Resources, including its Offices and Commissions, for the sole purpose of implementing, constructing, servicing and maintaining approved coastal zone management and/or restoration projects. Utilization of any and all rights derived under this lease by the mineral lessee, its agents, successors or assigns, shall not interfere with nor hinder the reasonable surface use by the

Department of Natural Resources, its Offices or Commissions, as herein above reserved.

NOTE: The Department of Wildlife and Fisheries has designated certain areas in the coastal waters of the State of Louisiana as Oyster Seed Bed Areas. The exact location of those Seed Bed Areas must be obtained from the Department of Wildlife and Fisheries and any work done under a mineral lease from the State of Louisiana may necessarily be conducted in conformity with the rules and regulations promulgated by the said Department of Wildlife and Fisheries for Oyster Seed Bed Areas.

Applicant: Kare-Sue Energy, Inc.

Bidder	Cash Payment	Price/ Acre	Rental	Oil	Gas	Other



CHANDELEUR SOUND AREA

ST BERNARD PARISH

CHRISTMAS CAMP LAKE

T14S - R18E

BLOCK CS0043

BLOCK CS0044

P.O.B.
X=2,630,274.00
Y=423,979.00

TRACT 35899 - Portion of Block 37, Chandeleur Sound Area, St. Bernard Parish, Louisiana

All of the lands now or formerly constituting the beds and bottoms of all water bodies of every nature and description the title of which vests in the State of Louisiana, together with all islands arising therein and other lands formed by accretion or by reliction, where allowed by law, excepting tax adjudicated lands, and not presently under mineral lease on December 10, 2003, situated in St. Bernard Parish, Louisiana, and more particularly described as follows: Beginning at a point on the West line of Block 37, Chandeleur Sound Area, having Coordinates of X = 2,723,850.00 and Y = 418,205.00; thence East 14,750.00 feet to a point intersecting the East line of Block 37, having Coordinates of X = 2,738,600.00 and Y = 418,205.00; thence South 7,375.00 feet along the East line of Block 37, to a point having Coordinates of X = 2,738,600.00 and Y = 410,830.00, being the Southeast corner of Block 37; thence West 14,750.00 feet along the South line of Block 37, to a point having Coordinates of X = 2,723,850.00 and Y = 410,830.00, being the Southwest line of Block 37; thence North 7,375.00 feet along the West line of Block 37, to the point of beginning, containing approximately **2,497.27 acres**, all as more particularly outlined on a plat on file in the Office of Mineral Resources, Department of Natural Resources. All bearings, distances and coordinates are based on Louisiana Coordinate System of 1927, (North or South Zone), where applicable.

NOTE: The above description of the Tract nominated for lease has been provided and corrected, where required, exclusively by the nomination party. Any mineral lease selected from this Tract and awarded by the Louisiana State Mineral Board shall be without warranty of any kind, either express, implied, or statutory, including, but not limited to, the implied warranties of merchantability and fitness for a particular purpose. Should the mineral lease awarded by the Louisiana State Mineral Board be subsequently modified, cancelled or abrogated due to the existence of conflicting leases, operating agreements, private claims or other future obligations or conditions which may affect all or any portion of the leased Tract, it shall not relieve the Lessee of the obligation to pay any bonus due thereon to the Louisiana State Mineral Board, nor shall the Louisiana State Mineral Board be obligated to refund any consideration paid by the Lessor prior to such modification, cancellation, or abrogation, including, but not limited to, bonuses, rentals and royalties.

NOTE: The Office of Mineral Resources will require a minimum bonus of \$230 per acre and a minimum royalty of 23%.

NOTE: The State of Louisiana does hereby reserve, and this lease shall be subject to, the imprescriptible right of surface use in the nature of a servitude in favor of the Department of Natural Resources, including its Offices and Commissions, for the sole purpose of implementing, constructing, servicing and maintaining approved coastal zone management and/or restoration projects. Utilization of any and all rights derived

under this lease by the mineral lessee, its agents, successors or assigns, shall not interfere with nor hinder the reasonable surface use by the Department of Natural Resources, its Offices or Commissions, as herein above reserved.

Applicant: Kristen Touchet

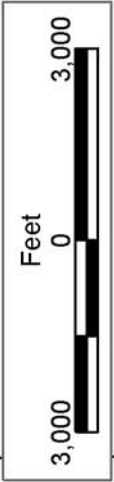
Bidder	Cash Payment	Price/ Acre	Rental	Oil	Gas	Other



BLOCK CS0036

BLOCK CS0057

ST BERNARD PARISH



BLOCK CS0037

BLOCK CS0056

CHANDELEUR SOUND AREA

BLOCK CS0038

BLOCK CS0055

P.O.B.
X=2,723,850.00
Y=418,205.00

TRACT 35900 - Portion of Block 41, Chandeleur Sound Area, St. Bernard Parish, Louisiana

All of the lands now or formerly constituting the beds and bottoms of all water bodies of every nature and description the title of which vests in the State of Louisiana, together with all islands arising therein and other lands formed by accretion or by reliction, where allowed by law, excepting tax adjudicated lands, and not presently under mineral lease on December 10, 2003, situated in St. Bernard Parish, Louisiana, and more particularly described as follows: Beginning at a point on the West line of Block 41, Chandeleur Sound Area, having Coordinates of X = 2,664,850.00 and Y = 418,205.00 thence East 14,750.00 feet to a point intersecting the East line of said Block 41, having Coordinates of X = 2,679,600.00 and Y = 418,205.00; thence South 7,375.00 feet along the East line of said Block 41, to a point having Coordinates of X = 2,679,600.00 and Y = 410,830.00, being the Southeast corner of said Block 41, thence West 14,750.00 feet along the South line of said Block 41, to a point having Coordinates of X = 2,664,850.00 and Y = 410,830.00, being the Southwest corner of said Block 41, thence North 7,375.00 feet along the West line of said Block 41, to the point of beginning, containing approximately **2,497.27 acres**, all as more particularly outlined on a plat on file in the Office of Mineral Resources, Department of Natural Resources. All bearings, distances and coordinates are based on Louisiana Coordinate System of 1927, (North or South Zone), where applicable.

NOTE: The above description of the Tract nominated for lease has been provided and corrected, where required, exclusively by the nomination party. Any mineral lease selected from this Tract and awarded by the Louisiana State Mineral Board shall be without warranty of any kind, either express, implied, or statutory, including, but not limited to, the implied warranties of merchantability and fitness for a particular purpose. Should the mineral lease awarded by the Louisiana State Mineral Board be subsequently modified, cancelled or abrogated due to the existence of conflicting leases, operating agreements, private claims or other future obligations or conditions which may affect all or any portion of the leased Tract, it shall not relieve the Lessee of the obligation to pay any bonus due thereon to the Louisiana State Mineral Board, nor shall the Louisiana State Mineral Board be obligated to refund any consideration paid by the Lessor prior to such modification, cancellation, or abrogation, including, but not limited to, bonuses, rentals and royalties.

NOTE: The Office of Mineral Resources will require a minimum bonus of \$230 per acre and a minimum royalty of 23%.

NOTE: The State of Louisiana does hereby reserve, and this lease shall be subject to, the imprescriptible right of surface use in the nature of a servitude in favor of the Department of Natural Resources, including its Offices and Commissions, for the sole purpose of implementing, constructing, servicing and maintaining approved coastal zone management and/or restoration projects. Utilization of any and all rights derived

under this lease by the mineral lessee, its agents, successors or assigns, shall not interfere with nor hinder the reasonable surface use by the Department of Natural Resources, its Offices or Commissions, as herein above reserved.

Applicant: Kristen Touchet

Bidder	Cash Payment	Price/ Acre	Rental	Oil	Gas	Other



BLOCK CS0040

BLOCK CS0053



ST BERNARD PARISH

BLOCK CS0041

BLOCK CS0052

CHANDELEUR SOUND AREA

BLOCK CS0042

BLOCK CS0051

P.O.B.
X=2,664,850.00
Y=418,205.00

TRACT 35901 - Portion of Block 40, Chandeleur Sound Area, St. Bernard Parish, Louisiana

All of the lands now or formerly constituting the beds and bottoms of all water bodies of every nature and description the title of which vests in the State of Louisiana, together with all islands arising therein and other lands formed by accretion or by reliction, where allowed by law, excepting tax adjudicated lands, and not presently under mineral lease on December 10, 2003, situated in St. Bernard Parish, Louisiana, and more particularly described as follows: Beginning at a point on the West line of Block 40, Chandeleur Sound Area having Coordinates of X = 2,679,600.00 and Y = 418,205.00 thence East 14,750.00 feet to a point intersecting the East line of said Block 40, having Coordinates of X = 2,694,350.00 and Y = 418,205.00; thence South 7,375.00 feet along the East line of Block 40, to a point having Coordinates of X = 2,694,350.00 and Y = 410,830.00, being the Southeast corner of said Block 40, thence West 14,750.00 feet along the South line of Block 40, to a point having Coordinates of X = 2,679,600.00 and Y = 410,830.00, being the Southwest corner of said Block 40, thence North 7,375.00 feet along the West line of Block 40, to the point of beginning, containing approximately **2,497.27 acres**, all as more particularly outlined on a plat on file in the Office of Mineral Resources, Department of Natural Resources. All bearings, distances and coordinates are based on Louisiana Coordinate System of 1927, (North or South Zone), where applicable.

NOTE: The above description of the Tract nominated for lease has been provided and corrected, where required, exclusively by the nomination party. Any mineral lease selected from this Tract and awarded by the Louisiana State Mineral Board shall be without warranty of any kind, either express, implied, or statutory, including, but not limited to, the implied warranties of merchantability and fitness for a particular purpose. Should the mineral lease awarded by the Louisiana State Mineral Board be subsequently modified, cancelled or abrogated due to the existence of conflicting leases, operating agreements, private claims or other future obligations or conditions which may affect all or any portion of the leased Tract, it shall not relieve the Lessee of the obligation to pay any bonus due thereon to the Louisiana State Mineral Board, nor shall the Louisiana State Mineral Board be obligated to refund any consideration paid by the Lessor prior to such modification, cancellation, or abrogation, including, but not limited to, bonuses, rentals and royalties.

NOTE: The Office of Mineral Resources will require a minimum bonus of \$190 per acre and a minimum royalty of 22%.

NOTE: The State of Louisiana does hereby reserve, and this lease shall be subject to, the imprescriptible right of surface use in the nature of a servitude in favor of the Department of Natural Resources, including its Offices and Commissions, for the sole purpose of implementing, constructing, servicing and maintaining approved coastal zone management and/or restoration projects. Utilization of any and all rights derived

under this lease by the mineral lessee, its agents, successors or assigns, shall not interfere with nor hinder the reasonable surface use by the Department of Natural Resources, its Offices or Commissions, as herein above reserved.

Applicant: Kristen Touchet

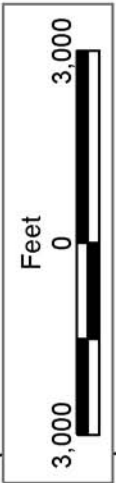
Bidder	Cash Payment	Price/ Acre	Rental	Oil	Gas	Other



BLOCK CS0039

ST BERNARD PARISH

BLOCK CS0054



BLOCK CS0040

BLOCK CS0053

CHANDELEUR SOUND AREA

BLOCK CS0041

P.O.B.
X=2,679,600.00
Y=418,205.00

BLOCK CS0052

TRACT 35902 - Portion of Block 55, Chandeleur Sound Area, St. Bernard Parish, Louisiana

All of the lands now or formerly constituting the beds and bottoms of all water bodies of every nature and description the title of which vests in the State of Louisiana, together with all islands arising therein and other lands formed by accretion or by reliction, where allowed by law, excepting tax adjudicated lands, and not presently under mineral lease on December 10, 2003, situated in St. Bernard Parish, Louisiana, and more particularly described as follows: Beginning at a point on the North line of Block 55, Chandeleur Sound Area, having Coordinates of X = 2,716,475.00 and Y = 410,830.00, thence East 7,375.00 feet along the North line of said Block 55, to a point having Coordinates of X = 2,723,850.00 and Y = 410,830.00, being the Northeast line of said Block 55, thence South 14,750.00 feet along the East line of said Block 55, to a point having Coordinates of X = 2,723,850.00 and Y = 396,080.00, being the Southeast corner of said Block 55, thence West 7,375.00 feet along the South line of said Block 55, to a point having Coordinates of X = 2,716,475.00 and Y = 396,080.00; thence North 14,750.00 feet to the point of beginning, containing approximately **2,497.27 acres**, all as more particularly outlined on a plat on file in the Office of Mineral Resources, Department of Natural Resources. All bearings, distances and coordinates are based on Louisiana Coordinate System of 1927, (North or South Zone), where applicable.

NOTE: The above description of the Tract nominated for lease has been provided and corrected, where required, exclusively by the nomination party. Any mineral lease selected from this Tract and awarded by the Louisiana State Mineral Board shall be without warranty of any kind, either express, implied, or statutory, including, but not limited to, the implied warranties of merchantability and fitness for a particular purpose. Should the mineral lease awarded by the Louisiana State Mineral Board be subsequently modified, cancelled or abrogated due to the existence of conflicting leases, operating agreements, private claims or other future obligations or conditions which may affect all or any portion of the leased Tract, it shall not relieve the Lessee of the obligation to pay any bonus due thereon to the Louisiana State Mineral Board, nor shall the Louisiana State Mineral Board be obligated to refund any consideration paid by the Lessor prior to such modification, cancellation, or abrogation, including, but not limited to, bonuses, rentals and royalties.

NOTE: The Office of Mineral Resources will require a minimum bonus of \$230 per acre and a minimum royalty of 23%.

NOTE: The State of Louisiana does hereby reserve, and this lease shall be subject to, the imprescriptible right of surface use in the nature of a servitude in favor of the Department of Natural Resources, including its Offices and Commissions, for the sole purpose of implementing, constructing, servicing and maintaining approved coastal zone management and/or restoration projects. Utilization of any and all rights derived

under this lease by the mineral lessee, its agents, successors or assigns, shall not interfere with nor hinder the reasonable surface use by the Department of Natural Resources, its Offices or Commissions, as herein above reserved.

Applicant: Kristen Touchet

Bidder	Cash Payment	Price/ Acre	Rental	Oil	Gas	Other

ST BERNARD PARISH



CHANDELEUR SOUND AREA

BLOCK CS0038

BLOCK CS0037

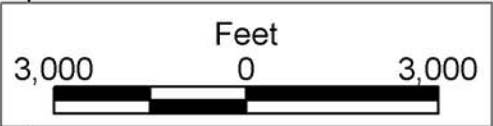
P.O.B.
X=2,716,475.00
Y=410,830.00

BLOCK CS0055

BLOCK CS0056

BLOCK CS0064

BLOCK CS0063



Office of Mineral Resources, Acres: 2497.27 Tract Number: 35902

2,497.27 +/- ACS.