

**TRACT 35871 - Webster Parish, Louisiana**

All of the lands now or formerly constituting the beds and bottoms of all water bodies of every nature and description the title of which vests in the State of Louisiana, together with all islands arising therein and other lands formed by accretion or by reliction, where allowed by law, excepting tax adjudicated lands, and not presently under mineral lease on December 10, 2003, situated in Webster Parish, Louisiana, and more particularly described as follows: Beginning at a point having Coordinates of X = 1,734,300.00 and Y = 678,000.00; thence East 7,350.00 feet to a point having Coordinates of X = 1,741,650.00 and Y = 678,000.00; thence South 11,200.00 feet to a point having Coordinates of X = 1,741,650.00 and Y = 666,800.00; thence West 7,350.00 feet to a point having Coordinates of X = 1,734,300.00 and Y = 666,800.00; thence North 11,200.00 feet to the point of beginning, containing approximately **38 acres**, all as more particularly outlined on a plat on file in the Office of Mineral Resources, Department of Natural Resources. All bearings, distances and coordinates are based on Louisiana Coordinate System of 1927, (North or South Zone), where applicable.

NOTE: The above description of the Tract nominated for lease has been provided and corrected, where required, exclusively by the nomination party. Any mineral lease selected from this Tract and awarded by the Louisiana State Mineral Board shall be without warranty of any kind, either express, implied, or statutory, including, but not limited to, the implied warranties of merchantability and fitness for a particular purpose. Should the mineral lease awarded by the Louisiana State Mineral Board be subsequently modified, cancelled or abrogated due to the existence of conflicting leases, operating agreements, private claims or other future obligations or conditions which may affect all or any portion of the leased Tract, it shall not relieve the Lessee of the obligation to pay any bonus due thereon to the Louisiana State Mineral Board, nor shall the Louisiana State Mineral Board be obligated to refund any consideration paid by the Lessor prior to such modification, cancellation, or abrogation, including, but not limited to, bonuses, rentals and royalties.

Applicant: Hershel Floyd, Jr.

Bidder	Cash Payment	Price/ Acre	Rental	Oil	Gas	Other





T18N - R9W



P.O.B.  
X=1,734,300.00  
Y=678,000.00

WEBSTER PARISH

T18N - R10W

LAKE BISTINEAU



**TRACT 35872 - Caddo Parish, Louisiana**

All of the lands now or formerly constituting the beds and bottoms of all water bodies of every nature and description the title of which vests in the State of Louisiana, together with all islands arising therein and other lands formed by accretion or by reliction, where allowed by law, excepting tax adjudicated lands, and not presently under mineral lease on December 10, 2003, situated in Caddo Parish, Louisiana, and more particularly described as follows: Beginning at a point having Coordinates of X = 1,600,033.53 and Y = 674,479.60; thence South 89 degrees 30 minutes 09 seconds East 87.50 feet to a point having Coordinates of X = 1,600,121.03 and Y = 674,478.84; thence South 00 degrees 12 minutes 32 seconds West 131.67 feet to a point having Coordinates of X = 1,600,120.55 and Y = 674,347.17; thence South 73 degrees 24 minutes 37 seconds East 156.84 feet to a point having Coordinates of X = 1,600,270.86 and Y = 674,302.39; thence South 41 degrees 36 minutes 34 seconds West 227.53 feet to a point having Coordinates of X = 1,600,119.77 and Y = 674,132.27; thence South 00 degrees 12 minutes 31 seconds West 450.70 feet to a point having Coordinates of X = 1,600,118.13 and Y = 673,681.57; thence North 48 degrees 18 minutes 42 seconds West 119.60 feet to a point having Coordinates of X = 1,600,028.82 and Y = 673,761.11; thence South 00 degrees 22 minutes 55 seconds East approximately 203 feet to a point on the Northeastern boundary of State Lease Number 12847; thence Northwesterly on said boundary of said State Lease Number 12847 to a point of intersection with a line bearing South 29 degrees 44 minutes 43 seconds West extended from a point having coordinates of X = 1,596,722.31 and Y = 675,823.51; thence North 29 degrees 44 minutes 43 seconds East approximately 200 feet along said line to said point having Coordinates of X = 1,596,722.31 and Y = 675,823.51; thence South 89 degrees 21 minutes 23 seconds East 3,316.88 feet to a point having Coordinates of X = 1,600,038.98 and Y = 675,786.25; thence South 00 degrees 14 minutes 20 seconds West 1,306.66 feet to the point of beginning, the above described tract is also being that portion of the former bed of Cross Lake lying below the 172 ft. contour line. **LESS AND EXCEPT** if any, that portion of State Lease Number 12847 that may lie within the above described tract, containing approximately **91 acres**, all as more particularly outlined on a plat on file in the Office of Mineral Resources, Department of Natural Resources. All bearings, distances and coordinates are based on Louisiana Coordinate System of 1927, (North or South Zone), where applicable.

NOTE: The above description of the Tract nominated for lease has been provided and corrected, where required, exclusively by the nomination party. Any mineral lease selected from this Tract and awarded by the Louisiana State Mineral Board shall be without warranty of any kind, either express, implied, or statutory, including, but not limited to, the implied warranties of merchantability and fitness for a particular purpose. Should the mineral lease awarded by the Louisiana State Mineral Board be subsequently modified, cancelled or abrogated due to the existence of conflicting leases, operating agreements, private claims or other future obligations or conditions which may affect all or any portion

of the leased Tract, it shall not relieve the Lessee of the obligation to pay any bonus due thereon to the Louisiana State Mineral Board, nor shall the Louisiana State Mineral Board be obligated to refund any consideration paid by the Lessor prior to such modification, cancellation, or abrogation, including, but not limited to, bonuses, rentals and royalties.

Applicant: Tellus Operating Group, LLC

Bidder	Cash Payment	Price/ Acre	Rental	Oil	Gas	Other





CADDO PARISH

T18N - R14W

CROSS LAKE

S.L. 12847

P.O.B.  
X=1,600,033.53  
Y=674,479.595

TR 03120073

Office of Mineral Resources, Acres: 91 Tract Number: 35872



**TRACT 35873 - Bienville and Bossier Parishes, Louisiana**

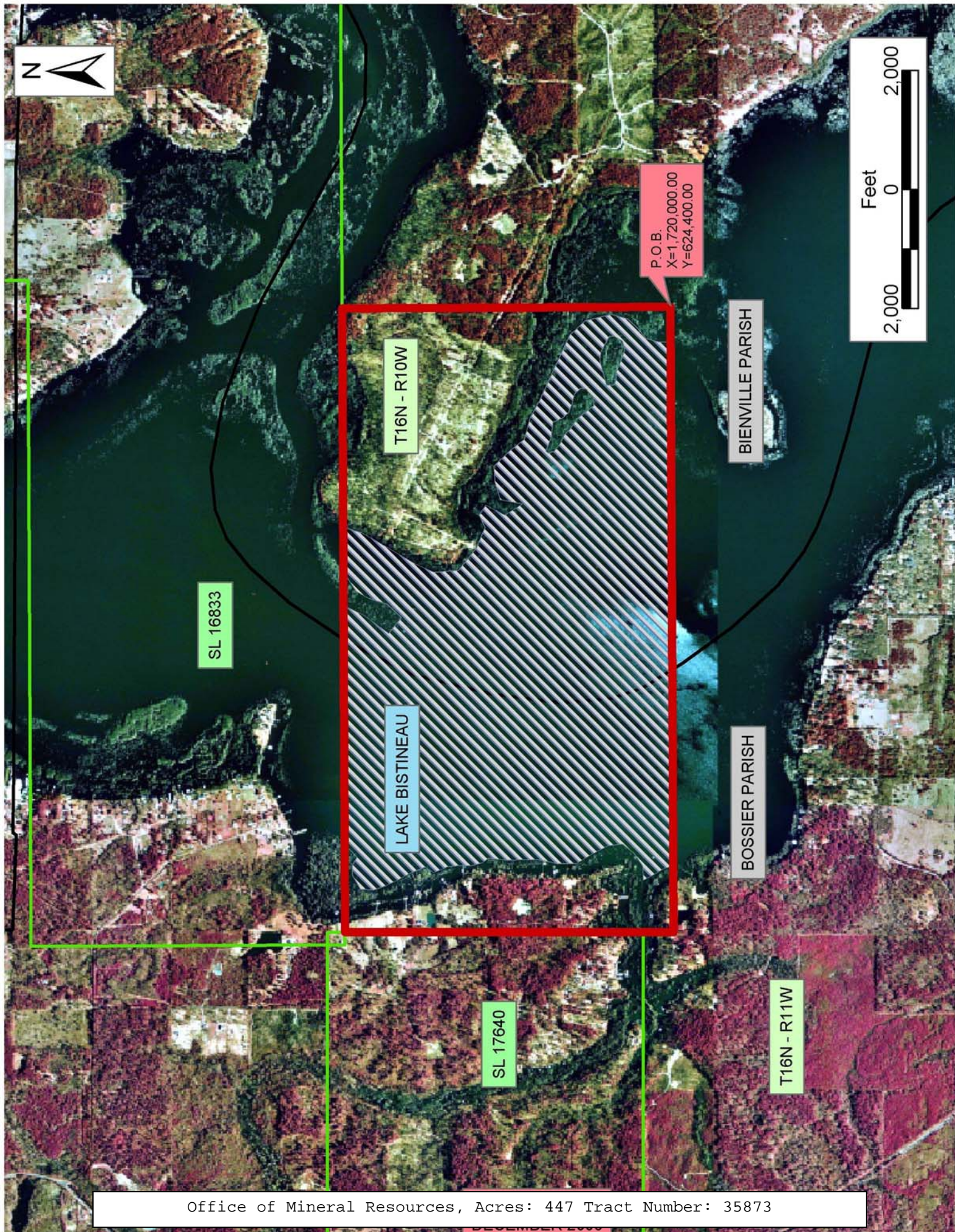
All of the lands now or formerly constituting the beds and bottoms of all water bodies of every nature and description the title of which vests in the State of Louisiana, together with all islands arising therein and other lands formed by accretion or by reliction, where allowed by law, excepting tax adjudicated lands, and not presently under mineral lease on December 10, 2003, situated in Bienville and Bossier Parishes, Louisiana, and more particularly described as follows: Beginning at a point having Coordinates of X = 1,720,000.00 and Y = 624,400.00; thence West 10,508.65 feet to a point having Coordinates of X = 1,709,491.35 and Y = 624,400.00; thence North 505.90 feet to the Southeast corner of State Lease No. 17640 having Coordinates of X = 1,709,491.35 and Y = 624,905.90; thence North 00 degrees 15 minutes 52 seconds East 5,014.16 feet along the East line of said State Lease No. 17640 to a point on the South line of State Lease No. 16833 having Coordinates of X = 1,709,514.50 and Y = 629,920.00; thence East 10,485.50 feet along the South line of said State Lease No. 16833 to a point having Coordinates of X = 1,720,000.00 and Y = 629,920.00; thence South 5,520.00 feet to the point of beginning, containing approximately **447 acres**, all as more particularly outlined on a plat on file in the Office of Mineral Resources, Department of Natural Resources. All bearings, distances and coordinates are based on Louisiana Coordinate System of 1927, (North or South Zone), where applicable.

NOTE: The above description of the Tract nominated for lease has been provided and corrected, where required, exclusively by the nomination party. Any mineral lease selected from this Tract and awarded by the Louisiana State Mineral Board shall be without warranty of any kind, either express, implied, or statutory, including, but not limited to, the implied warranties of merchantability and fitness for a particular purpose. Should the mineral lease awarded by the Louisiana State Mineral Board be subsequently modified, cancelled or abrogated due to the existence of conflicting leases, operating agreements, private claims or other future obligations or conditions which may affect all or any portion of the leased Tract, it shall not relieve the Lessee of the obligation to pay any bonus due thereon to the Louisiana State Mineral Board, nor shall the Louisiana State Mineral Board be obligated to refund any consideration paid by the Lessor prior to such modification, cancellation, or abrogation, including, but not limited to, bonuses, rentals and royalties.

Applicant: Bistineau Partners

Bidder	Cash Payment	Price/ Acre	Rental	Oil	Gas	Other







**TRACT 35874 - Bienville and Bossier Parishes, Louisiana**

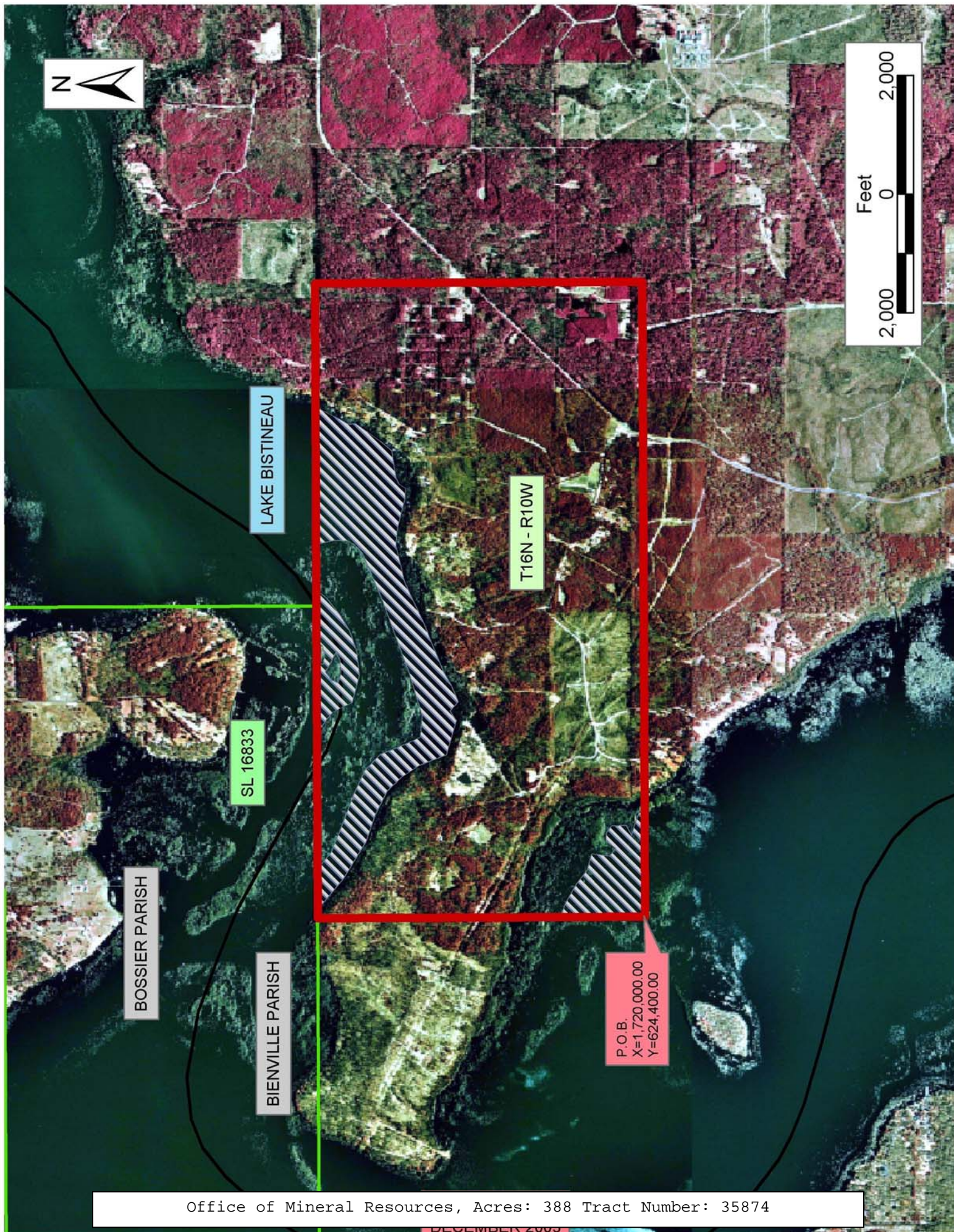
All of the lands now or formerly constituting the beds and bottoms of all water bodies of every nature and description the title of which vests in the State of Louisiana, together with all islands arising therein and other lands formed by accretion or by reliction, where allowed by law, excepting tax adjudicated lands, and not presently under mineral lease on December 10, 2003, situated in Bienville and Bossier Parishes, Louisiana, and more particularly described as follows: Beginning at a point having Coordinates of X = 1,720,000.00 and Y = 624,400.00; thence North 5,520.00 feet to a point on the South line of State Lease No. 16833 having Coordinates of X = 1,720,000.00 and Y = 629,920.00; thence East 5,260.00 feet along the South line of said State Lease No. 16833 to its Southeast corner having Coordinates of X = 1,725,260.00 and Y = 629,920.00; thence East 5,440.00 feet to a point having Coordinates of X = 1,730,700.00 and Y = 629,920.00; thence South 5,520.00 feet to a point having Coordinates of X = 1,730,700.00 and Y = 624,400.00; thence West 10,700.00 feet to the point of beginning, containing approximately **388 acres**, all as more particularly outlined on a plat on file in the Office of Mineral Resources, Department of Natural Resources. All bearings, distances and coordinates are based on Louisiana Coordinate System of 1927, (North or South Zone), where applicable.

NOTE: The above description of the Tract nominated for lease has been provided and corrected, where required, exclusively by the nomination party. Any mineral lease selected from this Tract and awarded by the Louisiana State Mineral Board shall be without warranty of any kind, either express, implied, or statutory, including, but not limited to, the implied warranties of merchantability and fitness for a particular purpose. Should the mineral lease awarded by the Louisiana State Mineral Board be subsequently modified, cancelled or abrogated due to the existence of conflicting leases, operating agreements, private claims or other future obligations or conditions which may affect all or any portion of the leased Tract, it shall not relieve the Lessee of the obligation to pay any bonus due thereon to the Louisiana State Mineral Board, nor shall the Louisiana State Mineral Board be obligated to refund any consideration paid by the Lessor prior to such modification, cancellation, or abrogation, including, but not limited to, bonuses, rentals and royalties.

Applicant: Bistineau Partners

Bidder	Cash Payment	Price/ Acre	Rental	Oil	Gas	Other





Office of Mineral Resources, Acres: 388 Tract Number: 35874

DECEMBER 2003



#### **TRACT 35875 - Bossier Parish, Louisiana**

All of the lands now or formerly constituting the beds and bottoms of all water bodies of every nature and description the title of which vests in the State of Louisiana, together with all islands arising therein and other lands formed by accretion or by reliction, where allowed by law, excepting tax adjudicated lands, and not presently under mineral lease on December 10, 2003, situated in Bossier Parish, Louisiana, and more particularly described as follows: Beginning at the Southeast corner of State Lease No. 17733 having Coordinates of X = 1,709,392.95 and Y = 603,474.48; thence South 9,534.78 feet to a point having Coordinates of X = 1,709,392.95 and Y = 593,939.70; thence West 1,750.85 feet to the Northeast corner of State Lease No. 17126 having Coordinates of X = 1,707,642.10 and Y = 593,939.70; thence along the boundary of said State Lease No. 17126 the following courses: South 89 degrees 59 minutes 49 seconds West 3,716.30 feet and South 00 degrees 47 minutes 02 seconds West 705.67 feet to a point having Coordinates of X = 1,703,916.15 and Y = 593,233.90; thence Westerly approximately 98 feet to the Northeast corner of State Lease No. 16397, as amended; thence Westerly on the North line of said State Lease No. 16397 to the point of intersection with a North/South line having a Coordinate of X = 1,699,585.82; thence North approximately 21 feet to the most Easterly Southeast corner of State Lease No. 17734 having Coordinates of X = 1,699,585.82 and Y = 593,233.04; thence along the boundary of said State Lease No. 17734 the following courses: North 01 degrees 02 minutes 45 seconds East 2,496.07 feet, North 89 degrees 07 minutes 23 seconds West 1,119.24 feet, and North 00 degrees 41 minutes 32 seconds East 7,729.22 feet to its Northeast corner and a point on the South line of said State Lease No. 17733 having Coordinates of X = 1,698,605.65 and Y = 603,474.48; thence East 10,787.30 feet on the South line of said State Lease No. 17733 to the point of beginning, **LESS AND EXCEPT** any portion lying within the boundaries of the Loggy Bayou Wildlife Management Area, containing approximately **10 acres**, all as more particularly outlined on a plat on file in the Office of Mineral Resources, Department of Natural Resources. All bearings, distances and coordinates are based on Louisiana Coordinate System of 1927, (North or South Zone), where applicable.

NOTE: The above description of the Tract nominated for lease has been provided and corrected, where required, exclusively by the nomination party. Any mineral lease selected from this Tract and awarded by the Louisiana State Mineral Board shall be without warranty of any kind, either express, implied, or statutory, including, but not limited to, the implied warranties of merchantability and fitness for a particular purpose. Should the mineral lease awarded by the Louisiana State Mineral Board be subsequently modified, cancelled or abrogated due to the existence of conflicting leases, operating agreements, private claims or other future obligations or conditions which may affect all or any portion of the leased Tract, it shall not relieve the Lessee of the obligation to pay any bonus due thereon to the Louisiana State Mineral Board, nor shall the Louisiana State Mineral Board be obligated to refund any consideration



paid by the Lessor prior to such modification, cancellation, or abrogation, including, but not limited to, bonuses, rentals and royalties.

Applicant: Hunter Energy Corporation

Bidder	Cash Payment	Price/ Acre	Rental	Oil	Gas	Other

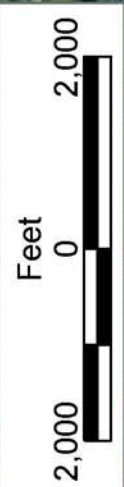




P.O.B.  
X=1,709,392.95  
Y=603,474.48

LOGGY BAYOU WMA

T15N - R10W



BOSSIER PARISH

SL 17733

T16N - R11W

T15N - R11W

SL 17126

SL 16397

SL 17734



**TRACT 35876 - Bossier and Caddo Parishes, Louisiana**

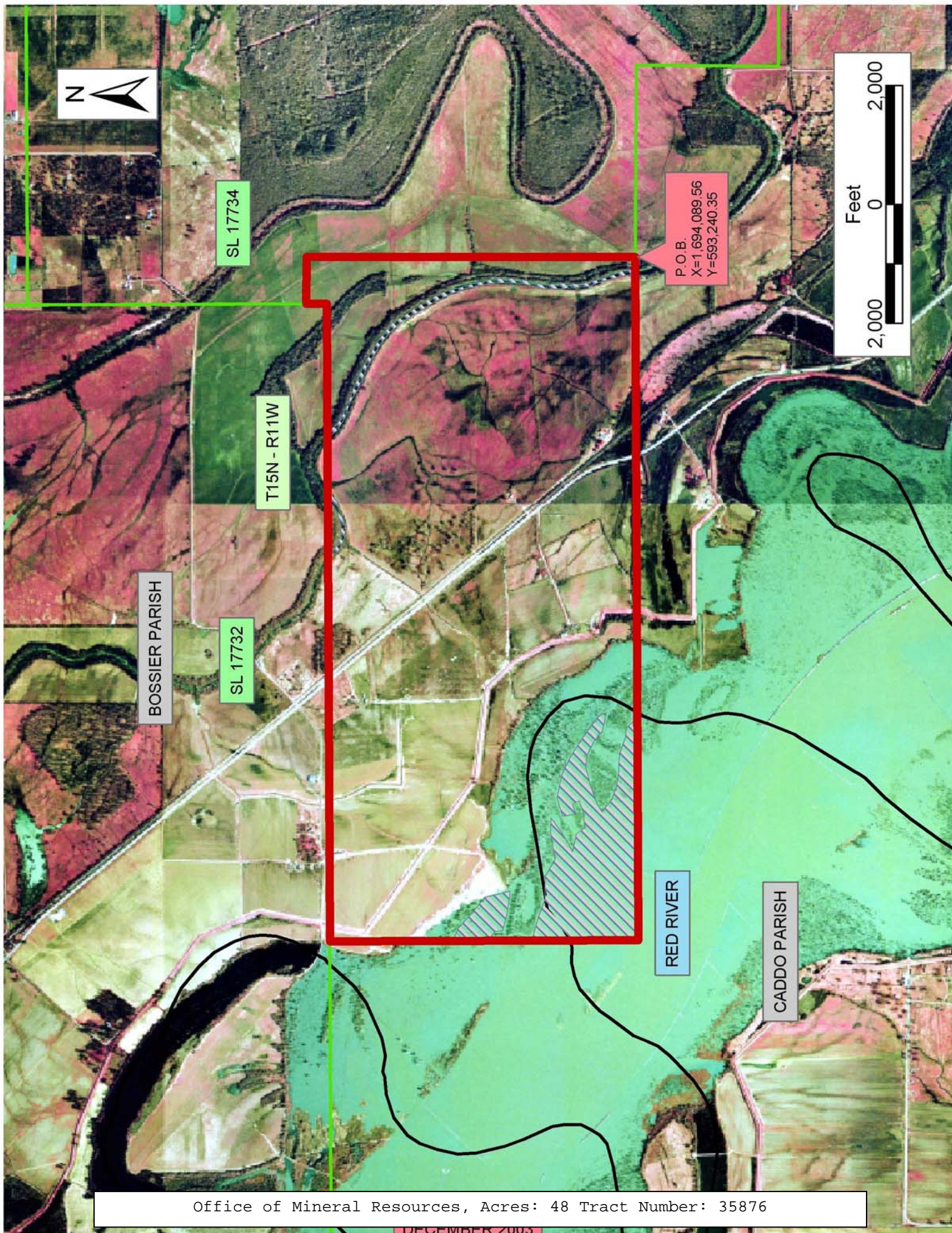
All of the lands now or formerly constituting the beds and bottoms of all water bodies of every nature and description the title of which vests in the State of Louisiana, together with all islands arising therein and other lands formed by accretion or by reliction, where allowed by law, excepting tax adjudicated lands, and not presently under mineral lease on December 10, 2003, situated in Bossier and Caddo Parishes, Louisiana, and more particularly described as follows: Beginning at a Southwest corner of State Lease No. 17734 having Coordinates of X = 1,694,089.56 and Y = 593,240.35; thence West 11,499.56 feet to a point having Coordinates of X = 1,682,590.00 and Y = 593,240.35; thence North 5,193.70 feet to a point on the South line of State Lease No. 17732 having Coordinates of X = 1,682,590.00 and Y = 598,434.05; thence along the boundary of said State Lease No. 17732 the following courses: East 10,735.95 feet and North 346.74 feet to the most Northerly Southwest corner of said State Lease No. 17734 having Coordinates of X = 1,693,325.95 and Y = 598,780.79; thence along the boundary of said State Lease No. 17734 the following courses: South 89 degrees 21 minutes 12 seconds East 789.31 feet and South 00 degrees 15 minutes 57 seconds West 5,531.59 feet to the point of beginning, containing approximately **48 acres**, all as more particularly outlined on a plat on file in the Office of Mineral Resources, Department of Natural Resources. All bearings, distances and coordinates are based on Louisiana Coordinate System of 1927, (North or South Zone), where applicable.

NOTE: The above description of the Tract nominated for lease has been provided and corrected, where required, exclusively by the nomination party. Any mineral lease selected from this Tract and awarded by the Louisiana State Mineral Board shall be without warranty of any kind, either express, implied, or statutory, including, but not limited to, the implied warranties of merchantability and fitness for a particular purpose. Should the mineral lease awarded by the Louisiana State Mineral Board be subsequently modified, cancelled or abrogated due to the existence of conflicting leases, operating agreements, private claims or other future obligations or conditions which may affect all or any portion of the leased Tract, it shall not relieve the Lessee of the obligation to pay any bonus due thereon to the Louisiana State Mineral Board, nor shall the Louisiana State Mineral Board be obligated to refund any consideration paid by the Lessor prior to such modification, cancellation, or abrogation, including, but not limited to, bonuses, rentals and royalties.

Applicant: Hunter Energy Corporation

Bidder	Cash Payment	Price/ Acre	Rental	Oil	Gas	Other







**TRACT 35877 - Catahoula and Concordia Parishes, Louisiana**

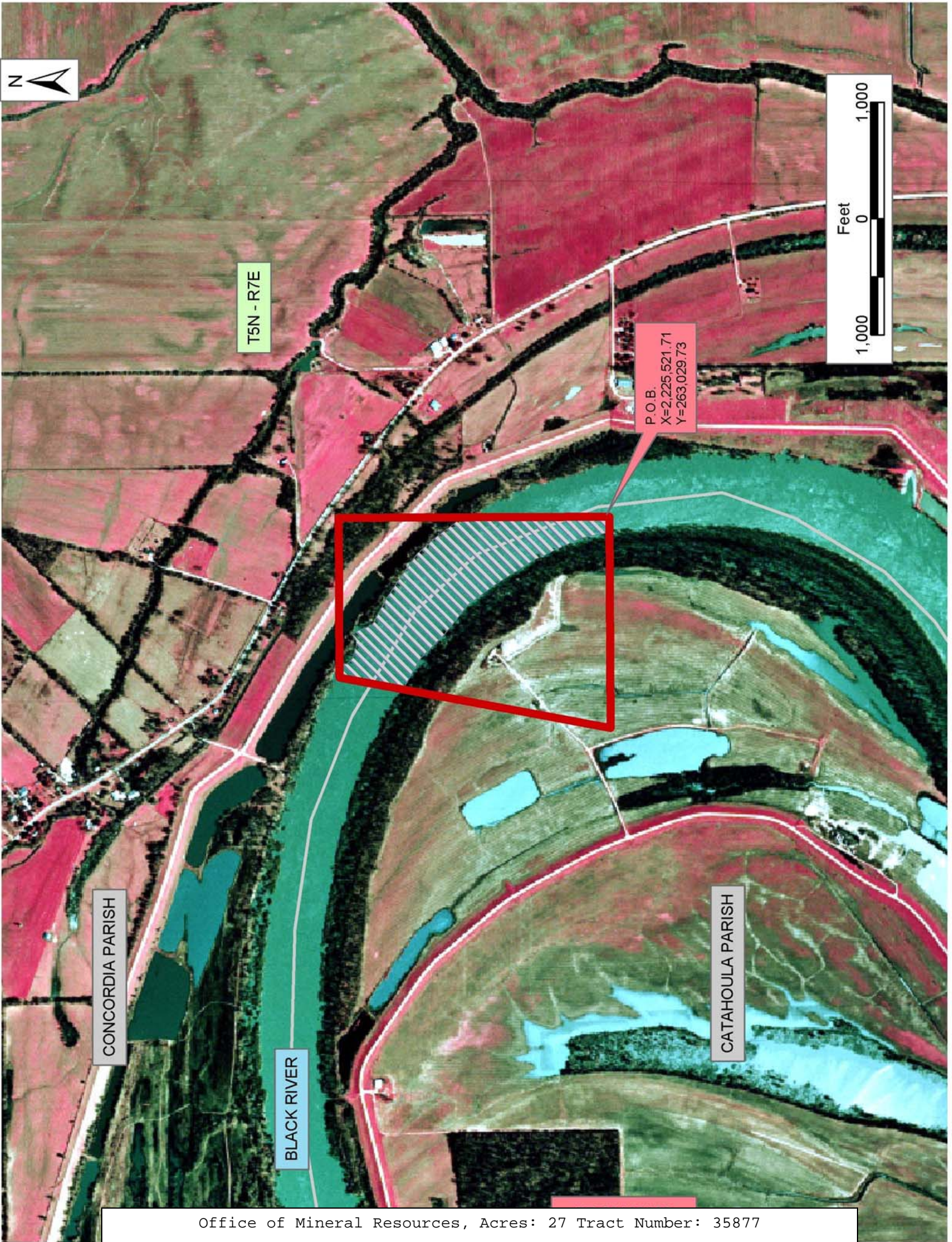
All of the lands now or formerly constituting the beds and bottoms of all water bodies of every nature and description the title of which vests in the State of Louisiana, together with all islands arising therein and other lands formed by accretion or by reliction, where allowed by law, excepting tax adjudicated lands, and not presently under mineral lease on December 10, 2003, situated in Catahoula and Concordia Parishes, Louisiana, and more particularly described as follows: Beginning at a point having Coordinates of X = 2,225,521.71 and Y = 263,029.73; thence North 2,327.89 feet to a point having Coordinates of X = 2,225,521.71 and Y = 265,357.62; thence West 1,374.02 feet to a point having Coordinates of X = 2,224,147.69 and Y = 265,357.62; thence South 10 degrees 47 minutes 27 seconds West 2,369.79 feet to a point having Coordinates of X = 2,223,704.01 and Y = 263,029.73; thence East 1,817.70 feet to the Point of beginning, containing approximately **27 acres**, all as more particularly outlined on a plat on file in the Office of Mineral Resources, Department of Natural Resources. All bearings, distances and coordinates are based on Louisiana Coordinate System of 1927, (North or South Zone), where applicable.

NOTE: The above description of the Tract nominated for lease has been provided and corrected, where required, exclusively by the nomination party. Any mineral lease selected from this Tract and awarded by the Louisiana State Mineral Board shall be without warranty of any kind, either express, implied, or statutory, including, but not limited to, the implied warranties of merchantability and fitness for a particular purpose. Should the mineral lease awarded by the Louisiana State Mineral Board be subsequently modified, cancelled or abrogated due to the existence of conflicting leases, operating agreements, private claims or other future obligations or conditions which may affect all or any portion of the leased Tract, it shall not relieve the Lessee of the obligation to pay any bonus due thereon to the Louisiana State Mineral Board, nor shall the Louisiana State Mineral Board be obligated to refund any consideration paid by the Lessor prior to such modification, cancellation, or abrogation, including, but not limited to, bonuses, rentals and royalties.

Applicant: CTR Incorporated

Bidder	Cash Payment	Price/ Acre	Rental	Oil	Gas	Other





CONCORDIA PARISH

BLACK RIVER

CATAHOULA PARISH

T5N - R7E

P.O.B.  
X=2,225,521.71  
Y=263,029.73

Feet  
0  
1,000  
2,000



**TRACT 35878 - St. Landry Parish, Louisiana**

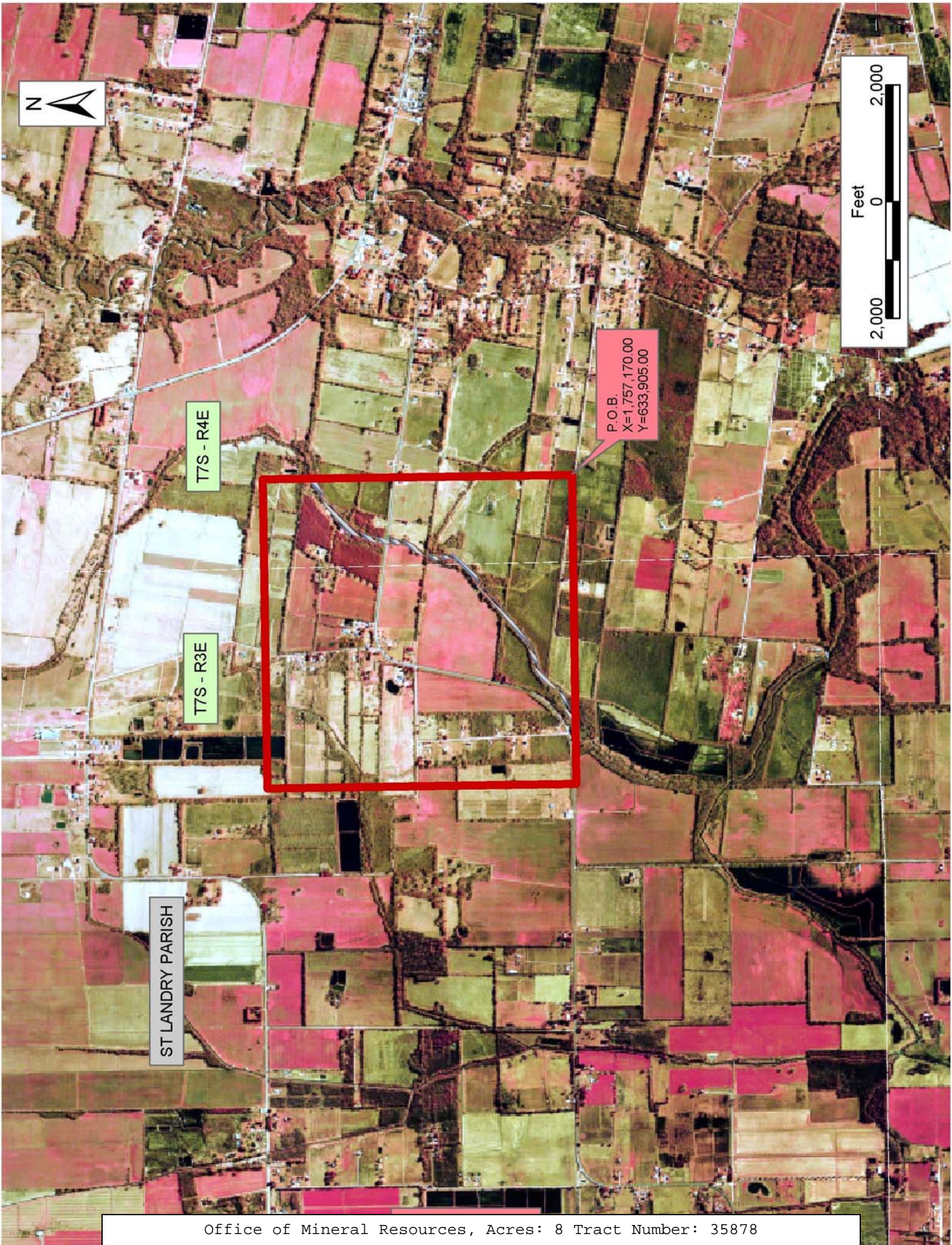
All of the lands now or formerly constituting the beds and bottoms of all water bodies of every nature and description the title of which vests in the State of Louisiana, together with all islands arising therein and other lands formed by accretion or by reliction, where allowed by law, excepting tax adjudicated lands, and not presently under mineral lease on December 10, 2003, situated in St. Landry Parish, Louisiana, and more particularly described as follows: Beginning at a point having Coordinates of X = 1,757,170.00 and Y = 633,905.00; thence West 5,300.00 feet to a point having Coordinates of X = 1,751,870.00 and Y = 633,905.00; thence North 5,300.00 feet to a point having Coordinates of X = 1,751,870.00 and Y = 639,205.00; thence East 5,300.00 feet to a point having Coordinates of X = 1,757,170.00 and Y = 639,205.00; thence South 5,300.00 feet to the point of beginning, containing approximately **8 acres**, all as more particularly outlined on a plat on file in the Office of Mineral Resources, Department of Natural Resources. All bearings, distances and coordinates are based on Louisiana Coordinate System of 1927, (North or South Zone), where applicable.

NOTE: The above description of the Tract nominated for lease has been provided and corrected, where required, exclusively by the nomination party. Any mineral lease selected from this Tract and awarded by the Louisiana State Mineral Board shall be without warranty of any kind, either express, implied, or statutory, including, but not limited to, the implied warranties of merchantability and fitness for a particular purpose. Should the mineral lease awarded by the Louisiana State Mineral Board be subsequently modified, cancelled or abrogated due to the existence of conflicting leases, operating agreements, private claims or other future obligations or conditions which may affect all or any portion of the leased Tract, it shall not relieve the Lessee of the obligation to pay any bonus due thereon to the Louisiana State Mineral Board, nor shall the Louisiana State Mineral Board be obligated to refund any consideration paid by the Lessor prior to such modification, cancellation, or abrogation, including, but not limited to, bonuses, rentals and royalties.

Applicant: Angelle & Donohue Oil & Gas Properties, Inc.

Bidder	Cash Payment	Price/ Acre	Rental	Oil	Gas	Other





T7S - R4E

T7S - R3E

P.O.B.  
X=1,757,170.00  
Y=633,905.00

ST LANDRY PARISH



**TRACT 35879 - St. Landry Parish, Louisiana**

All of the lands now or formerly constituting the beds and bottoms of all water bodies of every nature and description the title of which vests in the State of Louisiana, together with all islands arising therein and other lands formed by accretion or by reliction, where allowed by law, excepting tax adjudicated lands, and not presently under mineral lease on December 10, 2003, situated in St. Landry Parish, Louisiana, and more particularly described as follows: Beginning at a point having Coordinates of X = 1,755,765.00 and Y = 633,905.00; thence South 5,300.00 feet to a point having Coordinates of X = 1,755,765.00 and Y = 628,605.00; thence West 5,300.00 feet to a point having Coordinates of X = 1,750,465.00 and Y = 628,605.00; thence North 5,300.00 feet to a point having Coordinates of X = 1,750,465.00 and Y = 633,905.00; thence East 5,300.00 feet to the point of beginning, containing approximately **10 acres**, all as more particularly outlined on a plat on file in the Office of Mineral Resources, Department of Natural Resources. All bearings, distances and coordinates are based on Louisiana Coordinate System of 1927, (North or South Zone), where applicable.

NOTE: The above description of the Tract nominated for lease has been provided and corrected, where required, exclusively by the nomination party. Any mineral lease selected from this Tract and awarded by the Louisiana State Mineral Board shall be without warranty of any kind, either express, implied, or statutory, including, but not limited to, the implied warranties of merchantability and fitness for a particular purpose. Should the mineral lease awarded by the Louisiana State Mineral Board be subsequently modified, cancelled or abrogated due to the existence of conflicting leases, operating agreements, private claims or other future obligations or conditions which may affect all or any portion of the leased Tract, it shall not relieve the Lessee of the obligation to pay any bonus due thereon to the Louisiana State Mineral Board, nor shall the Louisiana State Mineral Board be obligated to refund any consideration paid by the Lessor prior to such modification, cancellation, or abrogation, including, but not limited to, bonuses, rentals and royalties.

Applicant: Angelle & Donohue Oil & Gas Properties, Inc.

Bidder	Cash Payment	Price/ Acre	Rental	Oil	Gas	Other





P.O.B.  
X=1,755,765.00  
Y=633,905.00



ST LANDRY PARISH

T7S - R3E



**TRACT 35880 - St. Landry Parish, Louisiana**

All of the lands now or formerly constituting the beds and bottoms of all water bodies of every nature and description the title of which vests in the State of Louisiana, together with all islands arising therein and other lands formed by accretion or by reliction, where allowed by law, excepting tax adjudicated lands, and not presently under mineral lease on December 10, 2003, situated in St. Landry Parish, Louisiana, and more particularly described as follows: Beginning at a point having Coordinates of X = 1,755,765.00 and Y = 633,905.00; thence East 5,300.00 feet to a point having Coordinates of X = 1,761,065.00 and Y = 633,905.00; thence South 8,110.00 feet to a point having Coordinates of X = 1,761,065.00 and Y = 625,795.00; thence West 5,300.00 feet to a point having Coordinates of X = 1,755,765.00 and Y = 625,795.00; thence North 8,110.00 feet to the point of beginning, containing approximately **12 acres**, all as more particularly outlined on a plat on file in the Office of Mineral Resources, Department of Natural Resources. All bearings, distances and coordinates are based on Louisiana Coordinate System of 1927, (North or South Zone), where applicable.

NOTE: The above description of the Tract nominated for lease has been provided and corrected, where required, exclusively by the nomination party. Any mineral lease selected from this Tract and awarded by the Louisiana State Mineral Board shall be without warranty of any kind, either express, implied, or statutory, including, but not limited to, the implied warranties of merchantability and fitness for a particular purpose. Should the mineral lease awarded by the Louisiana State Mineral Board be subsequently modified, cancelled or abrogated due to the existence of conflicting leases, operating agreements, private claims or other future obligations or conditions which may affect all or any portion of the leased Tract, it shall not relieve the Lessee of the obligation to pay any bonus due thereon to the Louisiana State Mineral Board, nor shall the Louisiana State Mineral Board be obligated to refund any consideration paid by the Lessor prior to such modification, cancellation, or abrogation, including, but not limited to, bonuses, rentals and royalties.

Applicant: Angelle & Donohue Oil & Gas Properties, Inc.

Bidder	Cash Payment	Price/ Acre	Rental	Oil	Gas	Other







**TRACT 35881 - Portion of Blocks 23, 24, 45, and 46, Chandeleur Sound Area, Addition, Revised, St. Bernard Parish, Louisiana**

All of the lands now or formerly constituting the beds and bottoms of all water bodies of every nature and description the title of which vests in the State of Louisiana, together with all islands arising therein and other lands formed by accretion or by reliction, where allowed by law, excepting tax adjudicated lands, and not presently under mineral lease on December 10, 2003, situated in St. Bernard Parish, Louisiana, and more particularly described as follows: Beginning at a point within Block 23, Chandeleur Sound Area Addition, Revised, having Coordinates of X = 2,630,274.00 and Y = 502,225.00; thence East 17,781.00 feet to a point within Block 24, having Coordinates of X = 2,648,055.00 and Y = 502,225.00; thence South 5,589.00 feet to a point within Block 45, having Coordinates of X = 2,648,055.00 and Y = 496,636.00; thence West 17,781.00 feet to a point within Block 46, having Coordinates of X = 2,630,274.00 and Y = 496,636.00; thence North 5,589.00 feet to the point of beginning, containing approximately **2,281 acres**, all as more particularly outlined on a plat on file in the Office of Mineral Resources, Department of Natural Resources. All bearings, distances and coordinates are based on Louisiana Coordinate System of 1927, (North or South Zone), where applicable.

NOTE: The above description of the Tract nominated for lease has been provided and corrected, where required, exclusively by the nomination party. Any mineral lease selected from this Tract and awarded by the Louisiana State Mineral Board shall be without warranty of any kind, either express, implied, or statutory, including, but not limited to, the implied warranties of merchantability and fitness for a particular purpose. Should the mineral lease awarded by the Louisiana State Mineral Board be subsequently modified, cancelled or abrogated due to the existence of conflicting leases, operating agreements, private claims or other future obligations or conditions which may affect all or any portion of the leased Tract, it shall not relieve the Lessee of the obligation to pay any bonus due thereon to the Louisiana State Mineral Board, nor shall the Louisiana State Mineral Board be obligated to refund any consideration paid by the Lessor prior to such modification, cancellation, or abrogation, including, but not limited to, bonuses, rentals and royalties.

NOTE: The Office of Mineral Resources will require a minimum bonus of \$230 per acre and a minimum royalty of 23%.

NOTE: The State of Louisiana does hereby reserve, and this lease shall be subject to, the imprescriptible right of surface use in the nature of a servitude in favor of the Department of Natural Resources, including its Offices and Commissions, for the sole purpose of implementing, constructing, servicing and maintaining approved coastal zone management and/or restoration projects. Utilization of any and all rights derived under this lease by the mineral lessee, its agents, successors or assigns, shall not interfere with nor hinder the reasonable surface use by the

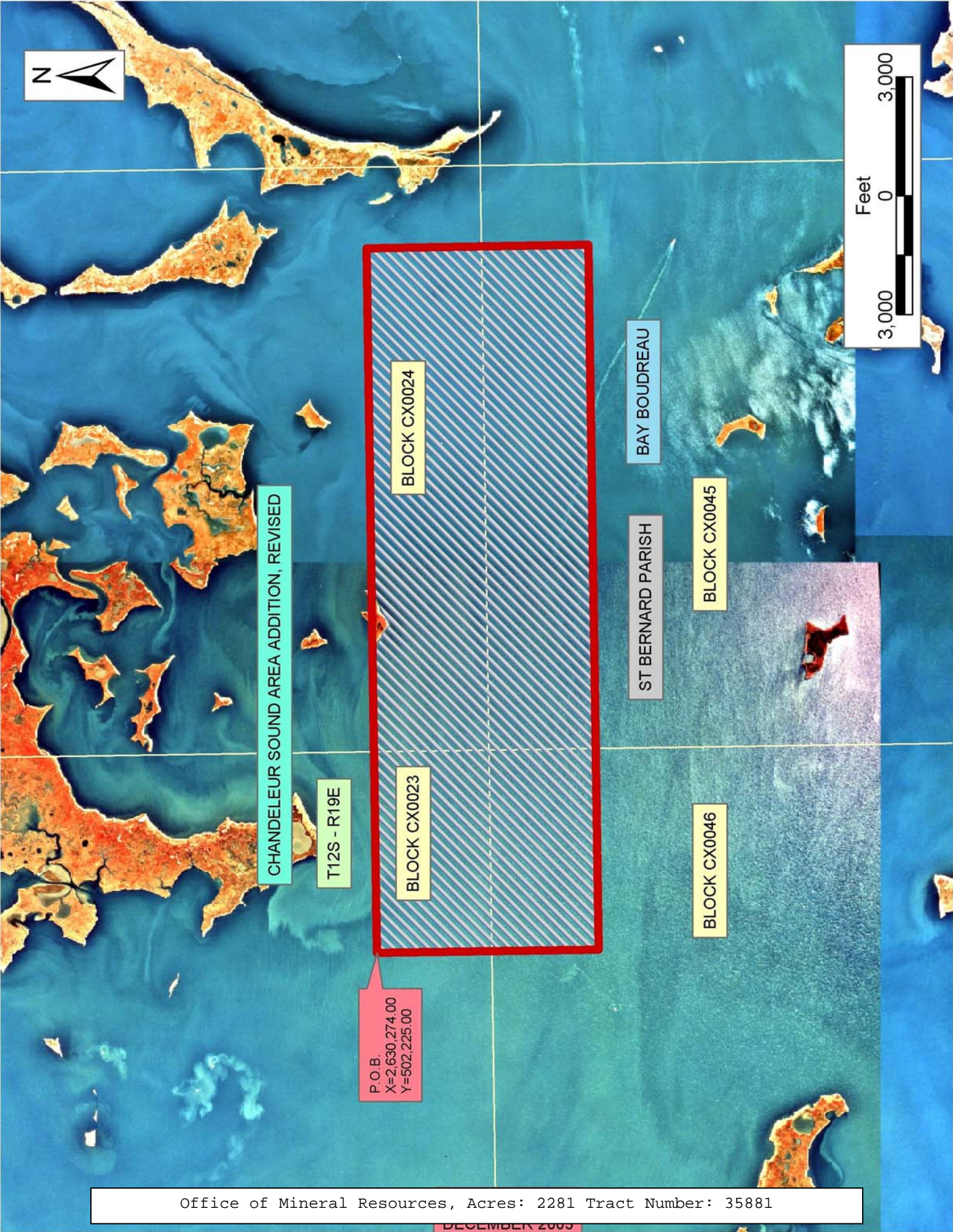


Department of Natural Resources, its Offices or Commissions, as herein above reserved.

NOTE: The Department of Wildlife and Fisheries has designated certain areas in the coastal waters of the State of Louisiana as Oyster Seed Bed Areas. The exact location of those Seed Bed Areas must be obtained from the Department of Wildlife and Fisheries and any work done under a mineral lease from the State of Louisiana may necessarily be conducted in conformity with the rules and regulations promulgated by the said Department of Wildlife and Fisheries for Oyster Seed Bed Areas.

Applicant: Kare-Sue Energy, Inc.

Bidder	Cash Payment	Price/ Acre	Rental	Oil	Gas	Other





**TRACT 35882 - Portion of Blocks 45, and 46, Chandeleur Sound Area, Addition, Revised, St. Bernard Parish, Louisiana**

All of the lands now or formerly constituting the beds and bottoms of all water bodies of every nature and description the title of which vests in the State of Louisiana, together with all islands arising therein and other lands formed by accretion or by reliction, where allowed by law, excepting tax adjudicated lands, and not presently under mineral lease on December 10, 2003, situated in St. Bernard Parish, Louisiana, and more particularly described as follows: Beginning at a point within Block 46, Chandeleur Sound Area Addition, Revised, having Coordinates of X = 2,630,274.00 and Y = 491,047.00; thence North 5,589.00 feet to a point having Coordinates of X = 2,630,274.00 and Y = 496,636.00; thence East 17,781.00 feet to a point within Block 45, having Coordinates of X = 2,648,055.00 and Y = 496,636.00; thence South 5,589.00 feet to a point having Coordinates of X = 2,648,055.00 and Y = 491,047.00; thence West 17,781.00 feet to the point of beginning, containing approximately **2,261 acres**, all as more particularly outlined on a plat on file in the Office of Mineral Resources, Department of Natural Resources. All bearings, distances and coordinates are based on Louisiana Coordinate System of 1927, (North or South Zone), where applicable.

NOTE: The above description of the Tract nominated for lease has been provided and corrected, where required, exclusively by the nomination party. Any mineral lease selected from this Tract and awarded by the Louisiana State Mineral Board shall be without warranty of any kind, either express, implied, or statutory, including, but not limited to, the implied warranties of merchantability and fitness for a particular purpose. Should the mineral lease awarded by the Louisiana State Mineral Board be subsequently modified, cancelled or abrogated due to the existence of conflicting leases, operating agreements, private claims or other future obligations or conditions which may affect all or any portion of the leased Tract, it shall not relieve the Lessee of the obligation to pay any bonus due thereon to the Louisiana State Mineral Board, nor shall the Louisiana State Mineral Board be obligated to refund any consideration paid by the Lessor prior to such modification, cancellation, or abrogation, including, but not limited to, bonuses, rentals and royalties.

NOTE: The Office of Mineral Resources will require a minimum bonus of \$230 per acre and a minimum royalty of 23%.

NOTE: The State of Louisiana does hereby reserve, and this lease shall be subject to, the imprescriptible right of surface use in the nature of a servitude in favor of the Department of Natural Resources, including its Offices and Commissions, for the sole purpose of implementing, constructing, servicing and maintaining approved coastal zone management and/or restoration projects. Utilization of any and all rights derived under this lease by the mineral lessee, its agents, successors or assigns, shall not interfere with nor hinder the reasonable surface use by the

Department of Natural Resources, its Offices or Commissions, as herein above reserved.

NOTE: The Department of Wildlife and Fisheries has designated certain areas in the coastal waters of the State of Louisiana as Oyster Seed Bed Areas. The exact location of those Seed Bed Areas must be obtained from the Department of Wildlife and Fisheries and any work done under a mineral lease from the State of Louisiana may necessarily be conducted in conformity with the rules and regulations promulgated by the said Department of Wildlife and Fisheries for Oyster Seed Bed Areas.

Applicant: Kare-Sue Energy, Inc.

Bidder	Cash Payment	Price/ Acre	Rental	Oil	Gas	Other



