

TRACT 35935 - St. Mary Parish, Louisiana

A portion of all lands located above the mean high water mark, together with lands now or formerly constituting the beds and bottoms of any water body of whatever description or nature belonging to the State of Louisiana which is now located within the boundaries of the Atchafalaya Delta Wildlife Management Area and not presently under mineral lease by the State of Louisiana on December 10, 2003, and more particularly located as follows: Beginning at a point having Coordinates of X = 1,952,199.10 and Y = 274,500.00; thence South 5,857.61 feet to a point on the North line of Block 14, Eugene Island Area, Revised, having Coordinates of X = 1,952,199.10 and Y = 268,642.39; thence South 7,444.28 feet to the Northeast corner of State Lease No. 17725 having Coordinates of X = 1,952,199.10 and Y = 261,198.11; thence West 2,500.00 feet along the North line of said State Lease No. 17725 to its Northwest corner, said corner also being a point on the East line of State Lease No. 17831 and a point on the West line of said Block 14, having Coordinates of X = 1,949,699.10 and Y = 261,198.11; thence North 3,801.89 feet along the East line of said State Lease No. 17831 to its Northeast corner, said corner also being a point on the West line of said Block 14, having Coordinates of X = 1,949,699.10 and Y = 265,000.00; thence along the Northern boundary line of said State Lease No. 17831 the following courses: South 54 degrees 03 minutes 55 seconds West 4,084.42 feet to a point having Coordinates of X = 1,946,392.00 and Y = 262,603.00 and South 82 degrees 08 minutes 39 seconds West 178.32 feet to a point on the Coastline derived from the June 16, 1975 Decree in the United States vs. Louisiana No. 9 Original, having Coordinates of X = 1,946,215.35 and Y = 262,578.63; thence North 66 degrees 22 minutes 27 seconds West 3,509.52 feet along said Coastline to a point having Coordinates of X = 1,943,000.00 and Y = 263,985.11; thence North 9,327.18 feet to a point on the North line of Block 13, Eugene Island Area, Revised, having Coordinates of X = 1,943,000.00 and Y = 273,312.29; thence North 1,187.71 feet to a point having Coordinates of X = 1,943,000.00 and Y = 274,500.00; thence East 9,199.10 feet to the point of beginning, containing **2,452.01 acres**, all as more particularly outlined on a plat on file in the Office of Mineral Resources, Department of Natural Resources. All bearings, distances and coordinates are based on Louisiana Coordinate System of 1927, (South Zone).

NOTE: The above description of the Tract nominated for lease has been provided and corrected, where required, exclusively by the nomination party. Any mineral lease selected from this Tract and awarded by the Louisiana State Mineral Board shall be without warranty of any kind, either express, implied, or statutory, including, but not limited to, the implied warranties of merchantability and fitness for a particular purpose. Should the mineral lease awarded by the Louisiana State Mineral Board be subsequently modified, cancelled or abrogated due to the existence of conflicting leases, operating agreements, private claims or other future obligations or conditions which may affect all or any portion of the leased Tract, it shall not relieve the Lessee of the obligation to pay any bonus due thereon to the Louisiana State Mineral Board, nor shall

the Louisiana State Mineral Board be obligated to refund any consideration paid by the Lessor prior to such modification, cancellation, or abrogation, including, but not limited to, bonuses, rentals and royalties.

NOTE: The above described tract may be in the vicinity of existing shell reefs where drilling and dredging operations must be conducted in strict conformity with the regulations adopted by the Louisiana Department of Wildlife and Fisheries and/or the U.S. Corps of Engineers, U.S. Army.

NOTE: The mineral lease is located in the Atchafalaya Delta WMA under the jurisdiction of the Louisiana Department of Wildlife and Fisheries which has promulgated rules and regulations for the protection of game and wildlife on the aforesaid Tract and, therefore, shall be subject to said rules and regulations, a copy of which shall be attached to the mineral lease. In addition to the specific rules and regulations applicable, the following shall apply regarding operations under this mineral lease:

1. No activities will be allowed without written authorization from the Louisiana Department of Wildlife and Fisheries.
2. Proposed projects will be evaluated on a case by case basis. Modifications to proposed project features including, but not limited to, access routes, spoil placement, well sites, flow lines and appurtenant structures may be required by the Department of Wildlife and Fisheries.
3. Compliance with the Atchafalaya Delta WMA regulations will be required unless otherwise specified by the Department of Wildlife and Fisheries.
4. Compensatory mitigation will be required to offset avoidable wetland impacts.
5. Removal of all structures, facilities and equipment will be required within 120 days of abandonment unless otherwise agreed to in writing by the Department of Wildlife and Fisheries.
6. No activities will be allowed during the hunting season unless authorized by the Department.
7. Prior to submitting applications for wetland permits to Federal and State permitting agencies, the leaseholder shall coordinate project details with the Department of Wildlife and Fisheries. Contact person for the Department will be Mike Windham at (504) 568-5886.

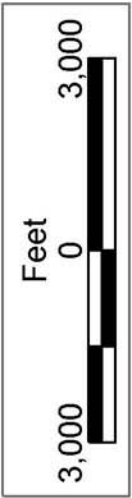
NOTE: A minimum bonus of \$350.00 per acre and a minimum royalty of 25% will be required.

NOTE: The State of Louisiana does hereby reserve, and this lease shall be subject to, the imprescriptible right of surface use in the nature of a servitude in favor of the Department of Natural Resources, including its Offices and Commissions, for the sole purpose of implementing, constructing, servicing and maintaining approved coastal zone management and/or restoration projects. Utilization of any and all rights derived under this lease by the mineral lessee, its agents, successors or assigns, shall not interfere with nor hinder the reasonable surface use by the Department of Natural Resources, its Offices or Commissions, as herein above reserved.

NOTE: The Department of Wildlife and Fisheries has designated certain areas in the coastal waters of the State of Louisiana as Oyster Seed Bed Areas. The exact location of those Seed Bed Areas must be obtained from the Department of Wildlife and Fisheries and any work done under a mineral lease from the State of Louisiana may necessarily be conducted in conformity with the rules and regulations promulgated by the said Department of Wildlife and Fisheries for Oyster Seed Bed Areas.

Applicant: Point Chevou Resources

Bidder	Cash Payment	Price/ Acre	Rental	Oil	Gas	Other



ATCHAFALAYA DELTA WMA

P.O.B.
X=1,952,199.10
Y=274,500.00

BLOCK EI0014

EUGENE ISLAND
AREA, REVISED

SL 17725

SL 17831

BLOCK EI0013

ST MARY PARISH

TRACT 35936 - St. Mary Parish, Louisiana

A portion of all lands located above the mean high water mark, together with lands now or formerly constituting the beds and bottoms of any water body of whatever description or nature belonging to the State of Louisiana which is now located within the boundaries of the Atchafalaya Delta Wildlife Management Area and not presently under mineral lease by the State of Louisiana on December 10, 2003, and more particularly located as follows: Beginning at a point having Coordinates of X = 1,952,199.10 and Y = 274,500.00; thence East 6,778.87 feet to a point having Coordinates of X = 1,958,977.97 and Y = 274,500.00; thence South 8,243.03 feet to a point on the North line of Block 14, Eugene Island Area, Revised, having Coordinates of X = 1,958,977.97 and Y = 266,256.97; thence South 9,261.06 feet to a point on the North line of State Lease No. 7868, as amended, being a point on the Coastline derived from the June 16, 1975 Decree in the United States vs. Louisiana No. 9 Original, having Coordinates of X = 1,958,977.97 and Y = 256,995.90; thence North 66 degrees 22 minutes 27 seconds West 7,399.05 feet with the said Coastline to a point on the East line of State Lease No. 17725 having Coordinates of X = 1,952,199.10 and Y = 259,961.17; thence North 1,236.94 feet along the East line of said State Lease No. 17725 to it's Northeast corner having Coordinates of X = 1,952,199.10 and Y = 261,198.11; thence North 7,444.28 feet to a point on the North line of said Block 14 having Coordinates of X = 1,952,199.10 and Y = 268,642.39; thence North 5,857.61 feet to the point of beginning, containing **2,493.28 acres**, all as more particularly outlined on a plat on file in the Office of Mineral Resources, Department of Natural Resources. All bearings, distances and coordinates are based on Louisiana Coordinate System of 1927, (South Zone).

NOTE: The above description of the Tract nominated for lease has been provided and corrected, where required, exclusively by the nomination party. Any mineral lease selected from this Tract and awarded by the Louisiana State Mineral Board shall be without warranty of any kind, either express, implied, or statutory, including, but not limited to, the implied warranties of merchantability and fitness for a particular purpose. Should the mineral lease awarded by the Louisiana State Mineral Board be subsequently modified, cancelled or abrogated due to the existence of conflicting leases, operating agreements, private claims or other future obligations or conditions which may affect all or any portion of the leased Tract, it shall not relieve the Lessee of the obligation to pay any bonus due thereon to the Louisiana State Mineral Board, nor shall the Louisiana State Mineral Board be obligated to refund any consideration paid by the Lessor prior to such modification, cancellation, or abrogation, including, but not limited to, bonuses, rentals and royalties.

NOTE: The above described tract may be in the vicinity of existing shell reefs where drilling and dredging operations must be conducted in strict conformity with the regulations adopted by the Louisiana Department of Wildlife and Fisheries and/or the U.S. Corps of Engineers, U.S. Army.

NOTE: The mineral lease is located in the Atchafalaya Delta WMA under the jurisdiction of the Louisiana Department of Wildlife and Fisheries which has promulgated rules and regulations for the protection of game and wildlife on the aforesaid Tract and, therefore, shall be subject to said rules and regulations, a copy of which shall be attached to the mineral lease. In addition to the specific rules and regulations applicable, the following shall apply regarding operations under this mineral lease:

1. No activities will be allowed without written authorization from the Louisiana Department of Wildlife and Fisheries.
2. Proposed projects will be evaluated on a case by case basis. Modifications to proposed project features including, but not limited to, access routes, spoil placement, well sites, flow lines and appurtenant structures may be required by the Department of Wildlife and Fisheries.
3. Compliance with the Atchafalaya Delta WMA regulations will be required unless otherwise specified by the Department of Wildlife and Fisheries.
4. Compensatory mitigation will be required to offset avoidable wetland impacts.
5. Removal of all structures, facilities and equipment will be required within 120 days of abandonment unless otherwise agreed to in writing by the Department of Wildlife and Fisheries.
6. No activities will be allowed during the hunting season unless authorized by the Department.
7. Prior to submitting applications for wetland permits to Federal and State permitting agencies, the leaseholder shall coordinate project details with the Department of Wildlife and Fisheries. Contact person for the Department will be Mike Windham at (504) 568-5886.

NOTE: A minimum bonus of \$350.00 per acre and a minimum royalty of 25% will be required.

NOTE: The State of Louisiana does hereby reserve, and this lease shall be subject to, the imprescriptible right of surface use in the nature of a servitude in favor of the Department of Natural Resources, including its Offices and Commissions, for the sole purpose of implementing, constructing, servicing and maintaining approved coastal zone management and/or restoration projects. Utilization of any and all rights derived under this lease by the mineral lessee, its agents, successors or assigns, shall not interfere with nor hinder the reasonable surface use by the Department of Natural Resources, its Offices or Commissions, as herein above reserved.

NOTE: The Department of Wildlife and Fisheries has designated certain areas in the coastal waters of the State of Louisiana as Oyster Seed Bed Areas. The exact location of those Seed Bed Areas must be obtained from the Department of Wildlife and Fisheries and any work done under a mineral lease from the State of Louisiana may necessarily be conducted in conformity with the rules and regulations promulgated by the said Department of Wildlife and Fisheries for Oyster Seed Bed Areas.

Applicant: Point Chevou Resources

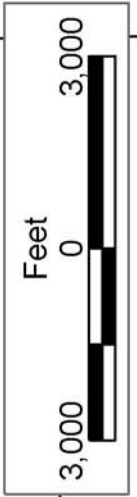
Bidder	Cash Payment	Price/ Acre	Rental	Oil	Gas	Other



ST MARY PARISH

EUGENE ISLAND AREA, REVISED

BLOCK EI0014



P.O.B.
X=1,952,199.10
Y=274,500.00

SL 7868

SL 17725

ATCHAFALAYA DELTA WMA

TRACT 35937 - St. Mary Parish, Louisiana

A portion of all lands located above the mean high water mark, together with lands now or formerly constituting the beds and bottoms of any water body of whatever description or nature belonging to the State of Louisiana which is now located within the boundaries of the Atchafalaya Delta Wildlife Management Area and not presently under mineral lease by the State of Louisiana on December 10, 2003, and more particularly located as follows: Beginning at a point on the Atchafalaya Delta Wildlife Management Area boundary, being the most Western corner of State Lease No. 17831 having Coordinates of X = 1,939,425.55 and Y = 260,785.81; thence North 70 degrees 45 minutes 00 seconds West approximately 2,208 feet along the Southern boundary of said Atchafalaya Delta Wildlife Management Area to a point on the East line of State Lease No. 340, as amended; thence Northerly approximately 4,947 feet along the East line of said State Lease No. 340, as amended, to a point on the Coastline derived from the June 16, 1975 Decree in the United States vs. Louisiana No. 9 Original; thence South 66 degrees 22 minutes 27 seconds East approximately 9,686 feet along said Coastline to a point on the boundary of said State Lease No. 17831 having Coordinates of X = 1,946,215.35 and Y = 262,578.63; thence South 82 degrees 08 minutes 39 seconds West 3,604.18 feet along the boundary of said State Lease No. 17831 to a point having Coordinates of X = 1,942,645.00 and Y = 262,086.00; thence South 68 degrees 00 minutes 30 seconds West 3,472.08 feet along the boundary of said State Lease No. 17831 to the point of beginning, containing approximately **567 acres**, all as more particularly outlined on a plat on file in the Office of Mineral Resources, Department of Natural Resources. All bearings, distances and coordinates are based on Louisiana Coordinate System of 1927, (South Zone).

NOTE: The above description of the Tract nominated for lease has been provided and corrected, where required, exclusively by the nomination party. Any mineral lease selected from this Tract and awarded by the Louisiana State Mineral Board shall be without warranty of any kind, either express, implied, or statutory, including, but not limited to, the implied warranties of merchantability and fitness for a particular purpose. Should the mineral lease awarded by the Louisiana State Mineral Board be subsequently modified, cancelled or abrogated due to the existence of conflicting leases, operating agreements, private claims or other future obligations or conditions which may affect all or any portion of the leased Tract, it shall not relieve the Lessee of the obligation to pay any bonus due thereon to the Louisiana State Mineral Board, nor shall the Louisiana State Mineral Board be obligated to refund any consideration paid by the Lessor prior to such modification, cancellation, or abrogation, including, but not limited to, bonuses, rentals and royalties.

NOTE: The above described tract may be in the vicinity of existing shell reefs where drilling and dredging operations must be conducted in strict conformity with the regulations adopted by the Louisiana Department of Wildlife and Fisheries and/or the U.S. Corps of Engineers, U.S. Army.

NOTE: The mineral lease is located in the Atchafalaya Delta WMA under the jurisdiction of the Louisiana Department of Wildlife and Fisheries which has promulgated rules and regulations for the protection of game and wildlife on the aforesaid Tract and, therefore, shall be subject to said rules and regulations, a copy of which shall be attached to the mineral lease. In addition to the specific rules and regulations applicable, the following shall apply regarding operations under this mineral lease:

1. No activities will be allowed without written authorization from the Louisiana Department of Wildlife and Fisheries.
2. Proposed projects will be evaluated on a case by case basis. Modifications to proposed project features including, but not limited to, access routes, spoil placement, well sites, flow lines and appurtenant structures may be required by the Department of Wildlife and Fisheries.
3. Compliance with the Atchafalaya Delta WMA regulations will be required unless otherwise specified by the Department of Wildlife and Fisheries.
4. Compensatory mitigation will be required to offset avoidable wetland impacts.
5. Removal of all structures, facilities and equipment will be required within 120 days of abandonment unless otherwise agreed to in writing by the Department of Wildlife and Fisheries.
6. No activities will be allowed during the hunting season unless authorized by the Department.
7. Prior to submitting applications for wetland permits to Federal and State permitting agencies, the leaseholder shall coordinate project details with the Department of Wildlife and Fisheries. Contact person for the Department will be Mike Windham at (504) 568-5886.

NOTE: A minimum bonus of \$350.00 per acre and a minimum royalty of 25% will be required.

NOTE: The State of Louisiana does hereby reserve, and this lease shall be subject to, the imprescriptible right of surface use in the nature of a servitude in favor of the Department of Natural Resources, including its Offices and Commissions, for the sole purpose of implementing, constructing, servicing and maintaining approved coastal zone management and/or restoration projects. Utilization of any and all rights derived under this lease by the mineral lessee, its agents, successors or assigns, shall not interfere with nor hinder the reasonable surface use by the Department of Natural Resources, its Offices or Commissions, as herein above reserved.

NOTE: The Department of Wildlife and Fisheries has designated certain areas in the coastal waters of the State of Louisiana as Oyster Seed Bed Areas. The exact location of those Seed Bed Areas must be obtained from the Department of Wildlife and Fisheries and any work done under a mineral lease from the State of Louisiana may necessarily be conducted in conformity with the rules and regulations promulgated by the said Department of Wildlife and Fisheries for Oyster Seed Bed Areas.

Applicant: Point Chevou Resources

Bidder	Cash Payment	Price/ Acre	Rental	Oil	Gas	Other



ST MARY PARISH

ATCHAFALAYA DELTA WMA

BLOCK EI0013

SL 17831

P.O.B.
X=1,939,425.55
Y=260,785.81

BLOCK EI0013

EUGENE ISLAND AREA, REVISED

SL 340

BLOCK EI0406

SL 340

TRACT 35938 - St. Mary Parish, Louisiana

A portion of all lands located above the mean high water mark, together with lands now or formerly constituting the beds and bottoms of any water body of whatever description or nature belonging to the State of Louisiana which is now located within the boundaries of the Atchafalaya Delta Wildlife Management Area and not presently under mineral lease by the State of Louisiana on December 10, 2003, and more particularly located as follows: Beginning at the Southeast corner of State Lease No. 17840, said corner also being a point on the East line of Block 13, Eugene Island Area, Revised, having Coordinates of X = 1,949,699.10 and Y = 260,098.11; thence South 2,900.00 feet along the East line said Block 13 to a point on the boundary of the Atchafalaya Delta Wildlife Management Area, having Coordinates of X = 1,949,699.10 and Y = 257,198.11; thence North 70 degrees 45 minutes 00 seconds West 6,100.91 feet along the boundary line of said Atchafalaya Delta Wildlife Management Area to the Southwest corner of State Lease No. 17831 having Coordinates of X = 1,943,939.30 and Y = 259,209.53; thence North 74 degrees 28 minutes 57 seconds East 3,321.40 feet along the Southern boundary of said State Lease No. 17831 to the Southwest corner of said State Lease No. 17840 having Coordinates of X = 1,947,139.64 and Y = 260,098.11; thence East 2,559.46 feet along the South line of said State Lease No. 17840 to the point of beginning, containing approximately **217.83 acres**, all as more particularly outlined on a plat on file in the Office of Mineral Resources, Department of Natural Resources. All bearings, distances and coordinates are based on Louisiana Coordinate System of 1927, (South Zone).

NOTE: The above description of the Tract nominated for lease has been provided and corrected, where required, exclusively by the nomination party. Any mineral lease selected from this Tract and awarded by the Louisiana State Mineral Board shall be without warranty of any kind, either express, implied, or statutory, including, but not limited to, the implied warranties of merchantability and fitness for a particular purpose. Should the mineral lease awarded by the Louisiana State Mineral Board be subsequently modified, cancelled or abrogated due to the existence of conflicting leases, operating agreements, private claims or other future obligations or conditions which may affect all or any portion of the leased Tract, it shall not relieve the Lessee of the obligation to pay any bonus due thereon to the Louisiana State Mineral Board, nor shall the Louisiana State Mineral Board be obligated to refund any consideration paid by the Lessor prior to such modification, cancellation, or abrogation, including, but not limited to, bonuses, rentals and royalties.

NOTE: The above described tract may be in the vicinity of existing shell reefs where drilling and dredging operations must be conducted in strict conformity with the regulations adopted by the Louisiana Department of Wildlife and Fisheries and/or the U.S. Corps of Engineers, U.S. Army.

NOTE: The mineral lease is located in the Atchafalaya Delta WMA under the jurisdiction of the Louisiana Department of Wildlife and Fisheries which

has promulgated rules and regulations for the protection of game and wildlife on the aforesaid Tract and, therefore, shall be subject to said rules and regulations, a copy of which shall be attached to the mineral lease. In addition to the specific rules and regulations applicable, the following shall apply regarding operations under this mineral lease:

1. No activities will be allowed without written authorization from the Louisiana Department of Wildlife and Fisheries.
2. Proposed projects will be evaluated on a case by case basis. Modifications to proposed project features including, but not limited to, access routes, spoil placement, well sites, flow lines and appurtenant structures may be required by the Department of Wildlife and Fisheries.
3. Compliance with the Atchafalaya Delta WMA regulations will be required unless otherwise specified by the Department of Wildlife and Fisheries.
4. Compensatory mitigation will be required to offset avoidable wetland impacts.
5. Removal of all structures, facilities and equipment will be required within 120 days of abandonment unless otherwise agreed to in writing by the Department of Wildlife and Fisheries.
6. No activities will be allowed during the hunting season unless authorized by the Department.
7. Prior to submitting applications for wetland permits to Federal and State permitting agencies, the leaseholder shall coordinate project details with the Department of Wildlife and Fisheries. Contact person for the Department will be Mike Windham at (504) 568-5886.

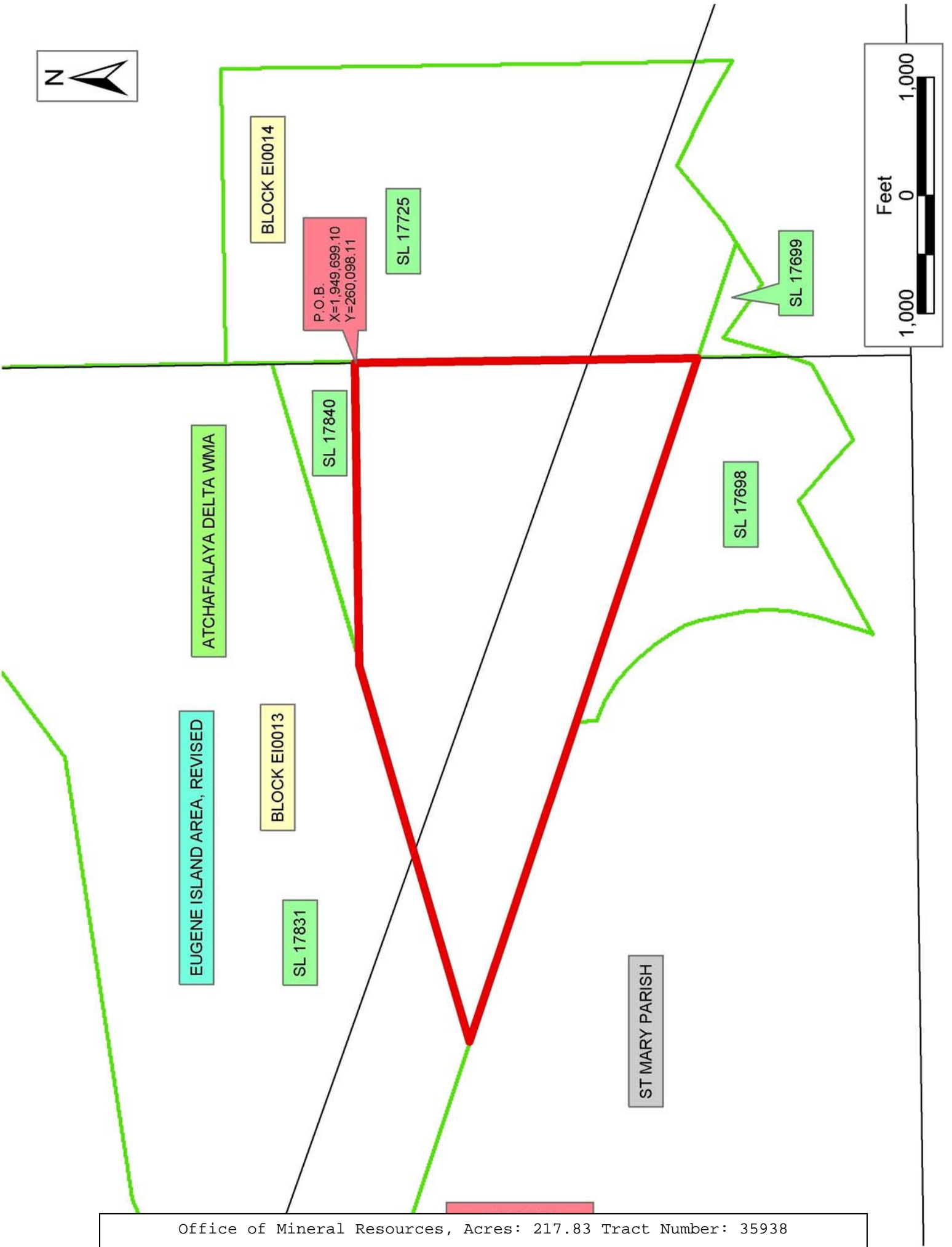
NOTE: A minimum bonus of \$350.00 per acre and a minimum royalty of 25% will be required.

NOTE: The State of Louisiana does hereby reserve, and this lease shall be subject to, the imprescriptible right of surface use in the nature of a servitude in favor of the Department of Natural Resources, including its Offices and Commissions, for the sole purpose of implementing, constructing, servicing and maintaining approved coastal zone management and/or restoration projects. Utilization of any and all rights derived under this lease by the mineral lessee, its agents, successors or assigns, shall not interfere with nor hinder the reasonable surface use by the Department of Natural Resources, its Offices or Commissions, as herein above reserved.

NOTE: The Department of Wildlife and Fisheries has designated certain areas in the coastal waters of the State of Louisiana as Oyster Seed Bed Areas. The exact location of those Seed Bed Areas must be obtained from the Department of Wildlife and Fisheries and any work done under a mineral lease from the State of Louisiana may necessarily be conducted in conformity with the rules and regulations promulgated by the said Department of Wildlife and Fisheries for Oyster Seed Bed Areas.

Applicant: Point Chevou Resources

Bidder	Cash Payment	Price/ Acre	Rental	Oil	Gas	Other



TRACT 35939 - St. Mary Parish, Louisiana

A portion of all lands located above the mean high water mark, together with lands now or formerly constituting the beds and bottoms of any water body of whatever description or nature belonging to the State of Louisiana which is now located within the boundaries of the Atchafalaya Delta Wildlife Management Area and not presently under mineral lease by the State of Louisiana on December 10, 2003, and more particularly located as follows: Beginning at a point within Block 14, Eugene Island Area, Revised, located on the East line of State Lease No. 17725, said point also being a point on the Coastline derived from the June 16, 1975 Decree in the United States vs. Louisiana No. 9 Original, having Coordinates of X = 1,952,199.10 and Y = 259,961.17; thence South 66 degrees 22 minutes 27 seconds East 7,399.05 feet along said Coastline to a point on the North line of State Lease No. 7868, as amended, having Coordinates of X = 1,958,977.97 and Y = 256,995.90; thence South 79 degrees 27 minutes 57 seconds West 1,454.44 feet along the North line of said State Lease No. 7868, as amended, to its Northwest corner, said corner also being the Northeast corner of a portion of State Lease No. 1666, as amended, having Coordinates of X = 1,957,548.04 and Y = 256,730.00; thence along the boundary of a portion of said State Lease No. 1666, as amended, the following courses: South 75 degrees 10 minutes 38 seconds West 1,094.47 feet to a point having Coordinates of X = 1,956,490.00 and Y = 256,450.00; South 77 degrees 20 minutes 51 seconds West 502.20 feet to a point having Coordinates of X = 1,956,000.00 and Y = 256,340.00; South 81 degrees 23 minutes 04 seconds West 333.77 feet to a point having Coordinates of X = 1,955,670.00 and Y = 256,290.00; South 84 degrees 52 minutes 58 seconds West 336.34 feet to a point having Coordinates of X = 1,955,335.00 and Y = 256,260.00; North 88 degrees 17 minutes 25 seconds West 335.15 feet to a point having Coordinates of X = 1,955,000.00 and Y = 256,270.00; North 82 degrees 14 minutes 05 seconds West 444.07 feet to a point having Coordinates of X = 1,954,560.00 and Y = 256,330.00; North 78 degrees 41 minutes 24 seconds West 458.91 feet to a point having Coordinates of X = 1,954,110.00 and Y = 256,420.00; South 53 degrees 25 minutes 37 seconds East 386.01 feet to a point having Coordinates of X = 1,954,420.00 and Y = 256,190.00; South 59 degrees 18 minutes 01 seconds East 372.16 feet to a point having Coordinates of X = 1,954,740.00 and Y = 256,000.00 and South 60 degrees 28 minutes 29 seconds East 1,229.69 feet to its most Southerly Southwest corner, said corner also being a point on the South line of said Block 14, having Coordinates of X = 1,955,810.00 and Y = 255,394.00; thence West 944.76 feet along the South line of said Block 14 to a point on the boundary of the Atchafalaya Delta Wildlife Management Area having Coordinates of X = 1,954,865.24 and Y = 255,394.00; thence North 70 degrees 45 minutes 00 seconds West 1,389.68 feet along the boundary of said Atchafalaya Delta Wildlife Management Area to a point on the Eastern boundary of a portion of said State Lease No. 1666, as amended, having Coordinates of X = 1,953,553.27 and Y = 255,852.17; thence along the Eastern boundary of a portion of said State Lease No. 1666, as amended, the following courses: North 43 degrees 37 minutes 43 seconds West 135.16 feet to a point having Coordinates of X = 1,953,460.00 and Y = 255,950.00;

North 48 degrees 00 minutes 46 seconds West 403.61 feet to a point having Coordinates of X = 1,953,160.00 and Y = 256,220.00; North 55 degrees 04 minutes 09 seconds West 768.44 feet to a point having Coordinates of X = 1,952,530.00 and Y = 256,660.00 and North 57 degrees 50 minutes 52 seconds West 390.85 feet to the Southeast corner of said State Lease No. 17725 having Coordinates of X = 1,952,199.10 and Y = 256,868.00; thence North 3,093.17 feet along the East line of said State Lease No. 17725 to the point of beginning, **LESS AND EXCEPT** any portion of the above described tract that may lie within State Lease No. 1666, as amended, containing **332.55 acres**, all as more particularly outlined on a plat on file in the Office of Mineral Resources, Department of Natural Resources. All bearings, distances and coordinates are based on Louisiana Coordinate System of 1927, (South Zone).

NOTE: The above description of the Tract nominated for lease has been provided and corrected, where required, exclusively by the nomination party. Any mineral lease selected from this Tract and awarded by the Louisiana State Mineral Board shall be without warranty of any kind, either express, implied, or statutory, including, but not limited to, the implied warranties of merchantability and fitness for a particular purpose. Should the mineral lease awarded by the Louisiana State Mineral Board be subsequently modified, cancelled or abrogated due to the existence of conflicting leases, operating agreements, private claims or other future obligations or conditions which may affect all or any portion of the leased Tract, it shall not relieve the Lessee of the obligation to pay any bonus due thereon to the Louisiana State Mineral Board, nor shall the Louisiana State Mineral Board be obligated to refund any consideration paid by the Lessor prior to such modification, cancellation, or abrogation, including, but not limited to, bonuses, rentals and royalties.

NOTE: The above described tract may be in the vicinity of existing shell reefs where drilling and dredging operations must be conducted in strict conformity with the regulations adopted by the Louisiana Department of Wildlife and Fisheries and/or the U.S. Corps of Engineers, U.S. Army.

NOTE: The mineral lease is located in the Atchafalaya Delta WMA under the jurisdiction of the Louisiana Department of Wildlife and Fisheries which has promulgated rules and regulations for the protection of game and wildlife on the aforesaid Tract and, therefore, shall be subject to said rules and regulations, a copy of which shall be attached to the mineral lease. In addition to the specific rules and regulations applicable, the following shall apply regarding operations under this mineral lease:

1. No activities will be allowed without written authorization from the Louisiana Department of Wildlife and Fisheries.
2. Proposed projects will be evaluated on a case by case basis. Modifications to proposed project features including, but not limited to, access routes, spoil placement, well sites, flow lines and appurtenant structures may be required by the Department of Wildlife and Fisheries.

3. Compliance with the Atchafalaya Delta WMA regulations will be required unless otherwise specified by the Department of Wildlife and Fisheries.
4. Compensatory mitigation will be required to offset avoidable wetland impacts.
5. Removal of all structures, facilities and equipment will be required within 120 days of abandonment unless otherwise agreed to in writing by the Department of Wildlife and Fisheries.
6. No activities will be allowed during the hunting season unless authorized by the Department.
7. Prior to submitting applications for wetland permits to Federal and State permitting agencies, the leaseholder shall coordinate project details with the Department of Wildlife and Fisheries. Contact person for the Department will be Mike Windham at (504) 568-5886.

NOTE: A minimum bonus of \$350.00 per acre and a minimum royalty of 25% will be required.

NOTE: The State of Louisiana does hereby reserve, and this lease shall be subject to, the imprescriptible right of surface use in the nature of a servitude in favor of the Department of Natural Resources, including its Offices and Commissions, for the sole purpose of implementing, constructing, servicing and maintaining approved coastal zone management and/or restoration projects. Utilization of any and all rights derived under this lease by the mineral lessee, its agents, successors or assigns, shall not interfere with nor hinder the reasonable surface use by the Department of Natural Resources, its Offices or Commissions, as herein above reserved.

NOTE: The Department of Wildlife and Fisheries has designated certain areas in the coastal waters of the State of Louisiana as Oyster Seed Bed Areas. The exact location of those Seed Bed Areas must be obtained from the Department of Wildlife and Fisheries and any work done under a mineral lease from the State of Louisiana may necessarily be conducted in conformity with the rules and regulations promulgated by the said Department of Wildlife and Fisheries for Oyster Seed Bed Areas.

Applicant: Point Chevou Resources

Bidder	Cash Payment	Price/ Acre	Rental	Oil	Gas	Other

