

**TRACT 35196 - Vermilion Parish, Louisiana**

A certain Tract of land, excluding the beds and bottoms of all navigable waters, belonging to and not presently under mineral lease from the Vermilion Parish Police Jury on December 11, 2002, being more fully described as follows: Beginning at a point having Coordinates X = 1,728,382.25 and Y = 472,351.59; thence East 5,465.32 feet to point having Coordinates X = 1,733,847.57 and Y = 472,351.59; thence South 6,999.69 feet to a point having Coordinates X = 1,733,847.57 and Y = 465,351.90; thence West 1,851.49 feet to a point on the outer boundaries of the 11,150' RC SUA having Coordinates X = 1,731,996.08 and Y = 465.351.90; thence along the outer boundary of the 11,150' RC SUA the following courses: North 02 degrees 14 minutes 30 seconds East 966.18 feet to a point; thence South 72 degrees 24 minutes 05 seconds West 255.84 feet to a point; thence South 64 degrees 03 minutes 28 seconds West 205.73 feet to a point; thence South 52 degrees 32 minutes 56 seconds West 296.02 feet to a point; thence South 60 degrees 01 minutes 06 seconds West 300.17 feet to a point; thence South 74 degrees 19 minutes 14 seconds West 296.02 feet to a point; thence South 82 degrees 52 minutes 30 seconds West 201.56 feet to a point; thence South 89 degrees 51 minutes 02 seconds West 2,242.76 feet to a point having Coordinates X = 1,728,382.25 and Y = 465,709.13; thence North 6,642.45 feet to the point of beginning, containing **9.438 acres**, all as more particularly outlined on a plat on file in the Office of Mineral Resources, Department of Natural Resources, as provided by the applicant. All distances, bearing and coordinates, if applicable, are based on the Louisiana Coordinate System of 1927, (North or South Zone).

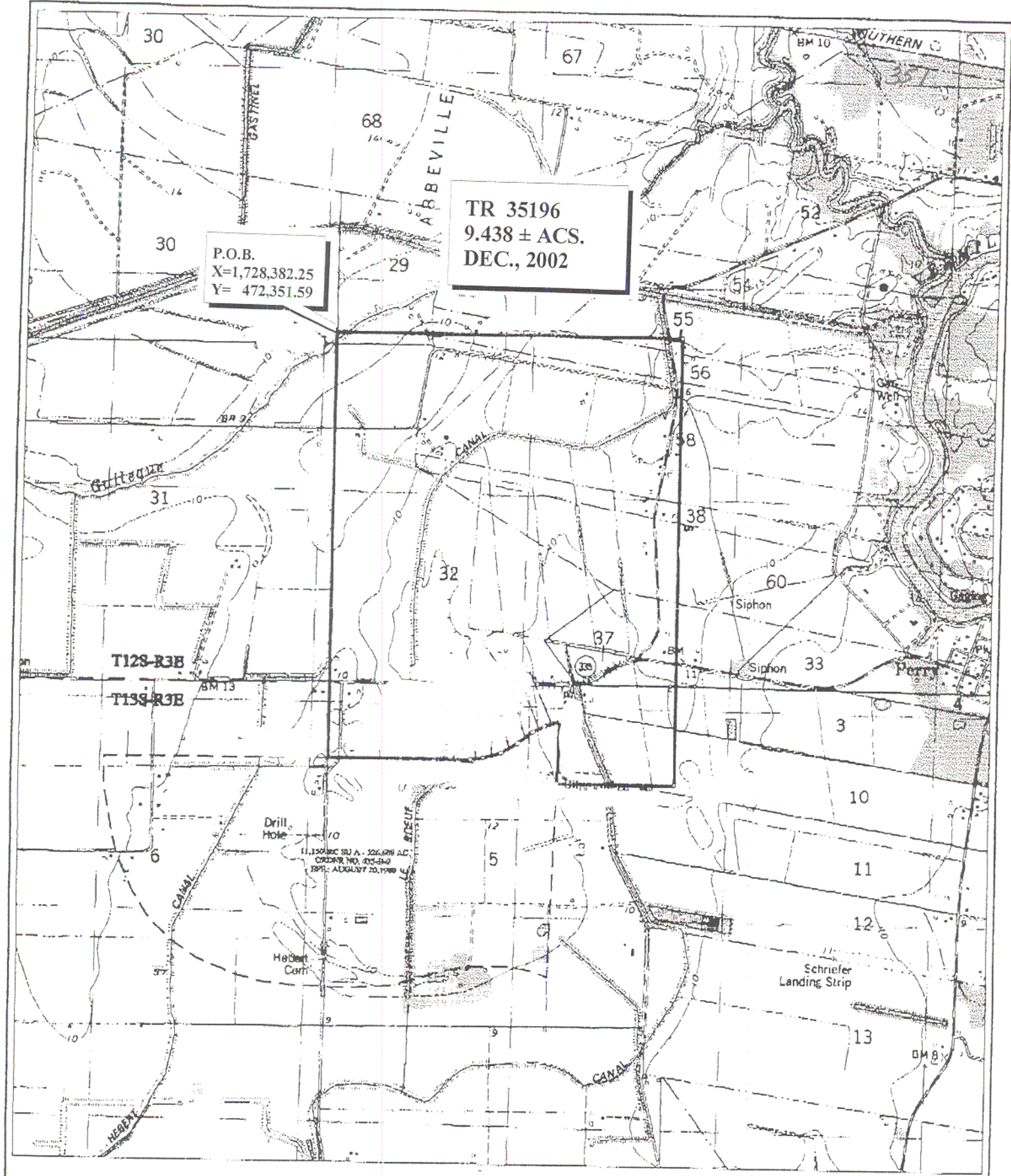
NOTE: The above description of the Tract nominated for lease has been provided and corrected, where required, exclusively by the nomination party. Any mineral lease selected from this Tract and awarded by the Louisiana State Mineral Board shall be without warranty of any kind, either express, implied, or statutory, including, but not limited to, the implied warranties of merchantability and fitness for a particular purpose. Should the mineral lease awarded by the Louisiana State Mineral Board be subsequently modified, cancelled or abrogated due to the existence of conflicting leases, operating agreements, private claims or other future obligations or conditions which may affect all or any portion of the leased Tract, it shall not relieve the Lessee of the obligation to pay any bonus due thereon to the Louisiana State Mineral Board, nor shall the Louisiana State Mineral Board be obligated to refund any consideration paid by the Lessor prior to such modification, cancellation, or abrogation, including, but not limited to, bonuses, rentals and royalties.

NOTE: The State of Louisiana does hereby reserve, and this lease shall be subject to, the imprescriptible right of surface use in the nature of a servitude in favor of the Department of Natural Resources, including its Offices and Commissions, for the sole purpose of implementing, constructing, servicing and maintaining approved coastal zone management and/or restoration projects. Utilization of any and all rights derived under this lease by the mineral lessee, its agents, successors or assigns, shall not interfere with nor hinder the reasonable surface use by the

Department of Natural Resources, its Offices or Commissions, as herein above reserved.

Applicant: CSE Exploration to Agency and by Resolution from the Vermilion Parish Police Jury authorizing the Mineral Board to act in its behalf.

Bidder	Cash Payment	Price / Acre	Rental	Oil	Gas	Other



TR 35196  
9.438 ± ACS.  
DEC., 2002

P.O.B.  
X=1,728,382.25  
Y= 472,351.59

T128-R3E  
T138-R3E

Drill Hole  
11,150 AC 33 1/2 - 326,629 AC  
ORDER NO. 005-84-0  
ESP. AUGUST 20, 1989

Herbert Corn

Schiefer Landing Strip

Vermilion Parish, LA.

