

**TRACT 35080 - Portion of Block 17, East Cameron Area, Revised, Cameron Parish, Louisiana**

That portion of Block 17, East Cameron Area, Revised, Cameron Parish, Louisiana, belonging to the State of Louisiana and not presently under mineral lease on December 11, 2002, being more fully described as follows: Beginning at the Northwest corner of Block 17, East Cameron Area, Revised, having Coordinates of X = 1,539,032.19 and Y = 345,241.95; thence East 9,758.05 feet along the North boundary of said Block 17 to the Northwest corner of Operating Agreement 0148 having Coordinates of X = 1,548,790.24 and Y = 345,241.95; thence South 27 degrees 23 minutes 07 seconds West 6,757.26 feet along the West boundary of said Operating Agreement 0148 to a point having Coordinates of X = 1,545,682.09 and Y = 339,241.95; thence West 6,649.90 feet to an intersection point on the West boundary of said Block 17 having Coordinates of X = 1,539,032.19 and Y = 339,241.95; thence North 6,000.00 feet to the point of beginning, containing approximately **1,130.02 acres**, all as more particularly outlined on a plat on file in the Office of Mineral Resources, Department of Natural Resources, as provided by the applicant. All bearings, distances and coordinates are based on Louisiana Coordinate System of 1927, (North or South Zone).

NOTE: The above description of the Tract nominated for lease has been provided and corrected, where required, exclusively by the nomination party. Any mineral lease selected from this Tract and awarded by the Louisiana State Mineral Board shall be without warranty of any kind, either express, implied, or statutory, including, but not limited to, the implied warranties of merchantability and fitness for a particular purpose. Should the mineral lease awarded by the Louisiana State Mineral Board be subsequently modified, cancelled or abrogated due to the existence of conflicting leases, operating agreements, private claims or other future obligations or conditions which may affect all or any portion of the leased Tract, it shall not relieve the Lessee of the obligation to pay any bonus due thereon to the Louisiana State Mineral Board, nor shall the Louisiana State Mineral Board be obligated to refund any consideration paid by the Lessor prior to such modification, cancellation, or abrogation, including, but not limited to, bonuses, rentals and royalties.

NOTE: The State of Louisiana does hereby reserve, and this lease shall be subject to, the imprescriptible right of surface use in the nature of a servitude in favor of the Department of Natural Resources, including its Offices and Commissions, for the sole purpose of implementing, constructing, servicing and maintaining approved coastal zone management and/or restoration projects. Utilization of any and all rights derived under this lease by the mineral lessee, its agents, successors or assigns, shall not interfere with nor hinder the reasonable surface use by the Department of Natural Resources, its Offices or Commissions, as herein above reserved.

Applicant: Louisiana Coastal Exploration, Inc.

Bidder	Cash Payment	Price / Acre	Rental	Oil	Gas	Other

# EAST CAMERON AREA, REVISED

P.O.B.  
X= 1,539,032.19  
Y= 345,241.95

BLK. 7

BLK. 6

TR 35080  
1,130.02 ± ACS.  
DEC., 2002

BLK. 18

A00148

BLK. 16

BLK. 17

3 MILE LINE

GULF OF MEXICO



BLK. 24

BLK. 23

BLOCK 17  
EAST CAMERON AREA ,REV.  
CAMERON PARISH, LOUISIANA

SCALE  
IN FEET 0 3,000'

**TRACT 35081 - Portion of Block 3, Vermilion Area, Revised, Vermilion Parish, Louisiana**

That portion of Block 3, Vermilion Area, Revised, Vermilion Parish, Louisiana, belonging to the State of Louisiana and not presently under mineral lease on December 11, 2002, being more fully described as follows: Beginning at the Southwest corner of Block 3, Vermilion Area, having Coordinates of X = 1,617,866.08 and Y = 317,582.82; thence North 7,379.02 feet along the West line of said Block 3 to a point having Coordinates of X = 1,617,866.07 and Y = 324,961.84; thence East 14,758.05 feet to a point on the East line of said Block 3 having Coordinates of X = 1,632,624.12 and Y = 324,961.84; thence South 2,877.30 feet along the East line of said Block 3 to a point, also being the Northeast corner of State Lease No. 16903 having Coordinates of X = 1,632,624.12 and Y = 322,084.54; thence along said State Lease No. 16903 the following courses: West 2,000.00 feet, South 3,001.72 feet, West 1,519.17 feet and South 1,500.00 feet to the Southwest corner of said State Lease No. 16903, also being a point on the South line of said Block 3 having Coordinates of X = 1,629,104.95 and Y = 317,582.82; thence West 11,238.87 feet along the South line of said Block 3 to the point of beginning, containing approximately **2,240.99 acres**, all as more particularly outlined on a plat on file in the Office of Mineral Resources, Department of Natural Resources, as provided by the applicant. All bearings, distances and coordinates are based on Louisiana Coordinate System of 1927, (North or South Zone).

NOTE: The above description of the Tract nominated for lease has been provided and corrected, where required, exclusively by the nomination party. Any mineral lease selected from this Tract and awarded by the Louisiana State Mineral Board shall be without warranty of any kind, either express, implied, or statutory, including, but not limited to, the implied warranties of merchantability and fitness for a particular purpose. Should the mineral lease awarded by the Louisiana State Mineral Board be subsequently modified, cancelled or abrogated due to the existence of conflicting leases, operating agreements, private claims or other future obligations or conditions which may affect all or any portion of the leased Tract, it shall not relieve the Lessee of the obligation to pay any bonus due thereon to the Louisiana State Mineral Board, nor shall the Louisiana State Mineral Board be obligated to refund any consideration paid by the Lessor prior to such modification, cancellation, or abrogation, including, but not limited to, bonuses, rentals and royalties.

NOTE: The State of Louisiana does hereby reserve, and this lease shall be subject to, the imprescriptible right of surface use in the nature of a servitude in favor of the Department of Natural Resources, including its Offices and Commissions, for the sole purpose of implementing, constructing, servicing and maintaining approved coastal zone management and/or restoration projects. Utilization of any and all rights derived under this lease by the mineral lessee, its agents, successors or assigns, shall not interfere with nor hinder the reasonable surface use by the Department of Natural Resources, its Offices or Commissions, as herein above reserved.

Applicant: Harold J. Anderson, Inc.

Bidder	Cash Payment	Price / Acre	Rental	Oil	Gas	Other

BIK. 2

BIK. 3

BIK. 4  
SL 16905

TR 35081  
2,240.99 ± ACS.  
DEC., 2002

SL 16903

SL 3842, As Amended

P. O. B.  
X=1,617,866.08  
Y= 317,582.82

SL 3624, As Amended

SL 16904

SL 17156

BIK. 19

BIK. 18

BIK. 17

VERMILION AREA, REV.

GULF OF MEXICO

NAD 27 LAMBERT LA. SOUTH ZONE

Vermilion Parish, Louisiana

4000' 0' 4000'

**TRACT 35082 - Portion of Block 18, Vermilion Area, Revised, Vermilion Parish, Louisiana**

That portion of Block 18, Vermilion Area, Revised, Vermilion Parish, Louisiana, belonging to the State of Louisiana and not presently under mineral lease on December 11, 2002, being more fully described as follows: Beginning at the Northwest corner of Block 18, Vermilion Area, Revised, having Coordinates of X = 1,617,866.08 and Y = 317,582.82; thence East 8,260.34 feet along the North line of said Block 18 to a point, also being the Northwest corner of State Lease No. 16904 having Coordinates of X = 1,626,126.42 and Y = 317,582.82; thence along the boundary of said State Lease No. 16904 the following courses: South 6,000.00 feet and East 6,497.70 feet to the Southeast corner of said State Lease No. 16904, also being a point on the East line of said Block 18 having Coordinates of X = 1,632,624.12 and Y = 311,582.82; thence South 2,495.42 feet along the East line of said Block 18 to a point having Coordinates of X = 1,632,624.12 and Y = 309,087.40; thence Northwesterly on a straight line to a point having Coordinates of X = 1,627,130 and Y = 309,807; thence Northwesterly on a straight line to a point having Coordinates of X = 1,620,757 and Y = 310,390; thence Northwesterly on an arc having a radius of 18,240.60 feet and a center at X = 1,622,420 and Y = 328,555 to a point having Coordinates of X = 1,619,895 and Y = 310,490; thence Northwesterly on a straight line to a point on the West line of said Block 18 having Coordinates of X = 1,617,866.08 and Y = 310,773.59; thence North 6,809.23 feet along the West line of said Block 18 to the point of beginning, containing approximately **1,691.29 acres, LESS AND EXCEPT** that portion thereof, if any, lying seaward of the line three nautical miles from the coast line of Louisiana, as said three mile line has been decreed by the Supreme Court of the United States, as determined by a Special Master appointed therein, in litigation styled **United States v. State of Louisiana et al No. 9 Original**, in 1975, all as more particularly outlined on a plat on file in the Office of Mineral Resources, Department of Natural Resources, as provided by the applicant. All bearings, distances and coordinates are based on Louisiana Coordinate System of 1927, (North or South Zone).

NOTE: The above description of the Tract nominated for lease has been provided and corrected, where required, exclusively by the nomination party. Any mineral lease selected from this Tract and awarded by the Louisiana State Mineral Board shall be without warranty of any kind, either express, implied, or statutory, including, but not limited to, the implied warranties of merchantability and fitness for a particular purpose. Should the mineral lease awarded by the Louisiana State Mineral Board be subsequently modified, cancelled or abrogated due to the existence of conflicting leases, operating agreements, private claims or other future obligations or conditions which may affect all or any portion of the leased Tract, it shall not relieve the Lessee of the obligation to pay any bonus due thereon to the Louisiana State Mineral Board, nor shall the Louisiana State Mineral Board be obligated to refund any consideration paid by the Lessor prior to such modification, cancellation, or abrogation, including, but not limited to, bonuses, rentals and royalties.

NOTE: The State of Louisiana does hereby reserve, and this lease shall be subject to, the imprescriptible right of surface use in the nature of a servitude in favor of the Department of Natural Resources, including its Offices and Commissions, for the sole purpose of implementing, constructing, servicing and maintaining approved coastal zone management and/or restoration projects. Utilization of any and all rights derived under this lease by the mineral lessee, its agents, successors or assigns, shall not interfere with nor hinder the reasonable surface use by the Department of Natural Resources, its Offices or Commissions, as herein above reserved.

Applicant: Harold J. Anderson, Inc.

Bidder	Cash Payment	Price / Acre	Rental	Oil	Gas	Other



BIK. 2

BIK. 3

BIK. 4  
SL 16905

SL 16903

SL 3842, As Amended

P. O. B.  
X=1,617,866.08  
Y= 317,582.82

SL 3624, As Amended

SL 16904

**TR 35082**  
**1,691.29 ± ACS.**  
**DEC., 2002**

SL 17156

BIK. 19

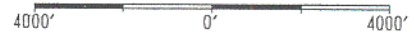
BIK. 18

LA BIK. 17  
US

VERMILION AREA, REV.

GULF OF MEXICO

Vermilion Parish, Louisiana



NAD 27  
LAMBERT LA. SOUTH ZONE

**TRACT 35083 - Portion of Block 17, Vermilion Area, Revised, Vermilion Parish, Louisiana**

That portion of Block 17, Vermilion Area, Revised, Vermilion Parish, Louisiana, belonging to the State of Louisiana and not presently under mineral lease on December 11, 2002, being more fully described as follows: Beginning at a point on the West line of Block 17, Vermilion Area, also being the most Westerly Southwest corner of State Lease No. 17156 having Coordinates of X = 1,632,624.12 and Y = 310,950.01; thence along said State Lease No. 17156 the following courses: East 7,200.00 feet, South 1,189.51 feet and East 2,136.28 feet to a point on the South line of said State Lease No. 17156, also being the Northwest corner of State Lease No. 17157 having Coordinates of X = 1,641,960.40 and Y = 309,760.50; thence South 38 degrees 27 minutes 42 seconds West 2,393.48 feet along the West line of said State Lease No. 17157 to its Southwest corner having Coordinates of X = 1,640,471.68 and Y = 307,886.35; thence Northwesterly on a straight line to a point having Coordinates of X = 1,636,292 and Y = 308,607; thence Northwesterly on a straight line to a point on the West line of said Block 17 having Coordinates of X = 1,632,624.12 and Y = 309,087.40; thence North 1,862.61 feet along the West line of said Block 17 to the point of beginning, containing approximately **450.80 acres, LESS AND EXCEPT** that portion thereof, if any, lying seaward of the line three nautical miles from the coast line of Louisiana, as said three mile line has been decreed by the Supreme Court of the United States, as determined by a Special Master appointed therein, in litigation styled **United States v. State of Louisiana et al No. 9 Original**, in 1975, all as more particularly outlined on a plat on file in the Office of Mineral Resources, Department of Natural Resources, as provided by the applicant. All bearings, distances and coordinates are based on Louisiana Coordinate System of 1927, (North or South Zone).

NOTE: The above description of the Tract nominated for lease has been provided and corrected, where required, exclusively by the nomination party. Any mineral lease selected from this Tract and awarded by the Louisiana State Mineral Board shall be without warranty of any kind, either express, implied, or statutory, including, but not limited to, the implied warranties of merchantability and fitness for a particular purpose. Should the mineral lease awarded by the Louisiana State Mineral Board be subsequently modified, cancelled or abrogated due to the existence of conflicting leases, operating agreements, private claims or other future obligations or conditions which may affect all or any portion of the leased Tract, it shall not relieve the Lessee of the obligation to pay any bonus due thereon to the Louisiana State Mineral Board, nor shall the Louisiana State Mineral Board be obligated to refund any consideration paid by the Lessor prior to such modification, cancellation, or abrogation, including, but not limited to, bonuses, rentals and royalties.

NOTE: The State of Louisiana does hereby reserve, and this lease shall be subject to, the imprescriptible right of surface use in the nature of a servitude in favor of the Department of Natural Resources, including its Offices and Commissions, for the sole purpose of implementing,

constructing, servicing and maintaining approved coastal zone management and/or restoration projects. Utilization of any and all rights derived under this lease by the mineral lessee, its agents, successors or assigns, shall not interfere with nor hinder the reasonable surface use by the Department of Natural Resources, its Offices or Commissions, as herein above reserved.

Applicant: Harold J. Anderson, Inc.

Bidder	Cash Payment	Price / Acre	Rental	Oil	Gas	Other

Bik. 3

Bik. 4  
SL 16905

Bik. 5

SL 16903

SL 3842, As Amended

SL 16904

SL 3624, As Amended

P. O. B.  
X=1,632,624.12  
Y= 310,950.01

SL 17156

Bik. 16

Bik. 18

LA  
US

Bik. 17

SL 17159

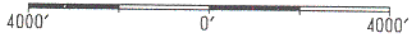
SL 17157

TR 35083  
450.80 ± ACS.  
DEC., 2002

VERMILION AREA, REVISED

GULF OF MEXICO

Vermilion Parish, Louisiana



NAD 27  
LAMBERT LA. SOUTH ZONE

**TRACT 35084 - Portion of Block 16, Eugene Island Area, Revised, St. Mary Parish, Louisiana**

That portion of Block 16, Eugene Island Area, Revised, St. Mary Parish, Louisiana, belonging to the State of Louisiana and not presently under mineral lease on December 11, 2002, being more fully described as follows: Beginning at the Southwest corner of Block 16, Eugene Island Area, Revised, having Coordinates of X = 1,969,955.68 and Y = 240,895.42; thence North 8,254.58 feet along the West line of said Block 16 to the Southwest corner of State Lease No. 17521 having Coordinates of X = 1,969,955.68 and Y = 249,150.00; thence East 2,675.17 feet along the South boundary of said State Lease No. 17521 to a point on the Southern boundary of the Atchafalaya Delta Wildlife Management Area having Coordinates of X = 1,972,630.85 and Y = 249,150.00; thence South 70 degrees 45 minutes 06 seconds East 7,169.97 feet along the Southern boundary of the said Atchafalaya Delta Wildlife Management Area to a point having Coordinates of X = 1,979,400.00 and Y = 246,786.31; thence South 5,890.89 feet to a point on the South line of said Block 16 having Coordinates of X = 1,979,400.00 and Y = 240,895.42; thence West 9,444.32 feet along the South line of said Block 16 to the point of beginning, containing approximately **1,606.03 acres**, all as more particularly outlined on a plat on file in the Office of Mineral Resources, Department of Natural Resources, as provided by the applicant. All bearings, distances and coordinates are based on Louisiana Coordinate System of 1927, (North or South Zone).

NOTE: The above description of the Tract nominated for lease has been provided and corrected, where required, exclusively by the nomination party. Any mineral lease selected from this Tract and awarded by the Louisiana State Mineral Board shall be without warranty of any kind, either express, implied, or statutory, including, but not limited to, the implied warranties of merchantability and fitness for a particular purpose. Should the mineral lease awarded by the Louisiana State Mineral Board be subsequently modified, cancelled or abrogated due to the existence of conflicting leases, operating agreements, private claims or other future obligations or conditions which may affect all or any portion of the leased Tract, it shall not relieve the Lessee of the obligation to pay any bonus due thereon to the Louisiana State Mineral Board, nor shall the Louisiana State Mineral Board be obligated to refund any consideration paid by the Lessor prior to such modification, cancellation, or abrogation, including, but not limited to, bonuses, rentals and royalties.

NOTE: The Department of Wildlife and Fisheries has designated certain areas in the coastal waters of the State of Louisiana as Oyster Seed Bed Areas. The exact location of those Seed Bed Areas must be obtained from the Department of Wildlife and Fisheries and any work done under a mineral lease from the State of Louisiana may necessarily be conducted in conformity with the rules and regulations promulgated by the said Department of Wildlife and Fisheries for Oyster Seed Bed Areas.

NOTE: It appears, according to our records, that a portion of this Tract is located within the restrictive safety fairway area as set out by the

Corps of Engineers, U.S. Army and/or the restrictive anchorage area as set out by the U.S. Coast Guard.

NOTE: The State of Louisiana does hereby reserve, and this lease shall be subject to, the imprescriptible right of surface use in the nature of a servitude in favor of the Department of Natural Resources, including its Offices and Commissions, for the sole purpose of implementing, constructing, servicing and maintaining approved coastal zone management and/or restoration projects. Utilization of any and all rights derived under this lease by the mineral lessee, its agents, successors or assigns, shall not interfere with nor hinder the reasonable surface use by the Department of Natural Resources, its Offices or Commissions, as herein above reserved.

Applicant: Bagre Marinus & Co., Ltd.

Bidder	Cash Payment	Price / Acre	Rental	Oil	Gas	Other

EUGENE ISLAND AREA, REVISED  
BLOCK 16

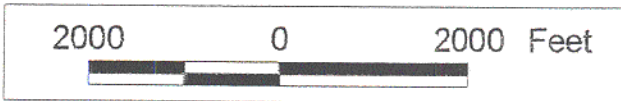
ST. MARY PARISH

SL 17251

ATCHAFALAYA DELTA  
WILDLIFE MANAGEMENT AREA

TR 35084  
1,606.03 ± ACS.  
DEC., 2002

P.O.B.  
X = 1,969,955.68  
Y = 240,895.42



**TRACT 35085 - Portion of Block 64, Ship Shoal Area, Terrebonne Parish, Louisiana**

That portion of Block 64, Ship Shoal Area, Terrebonne Parish, Louisiana, belonging to the State of Louisiana and not presently under mineral lease on December 11, 2002, being more fully described as follows: Beginning at a point on the Western boundary of State Lease No. 14795, as amended, being located also on Southern boundary of State Lease No. 17093 and having Coordinates of X = 2,133,904.85 and Y = 124,290.00; thence South 27 Degrees 10 Minutes 29 Seconds West 2,857.10 feet along said Western boundary of said State Lease No. 14795 to a point having Coordinates of X = 2,132,600.00 and Y = 121,748.27; thence West 1,462.50 feet to a point having Coordinates of X = 2,131,137.50 and Y = 121,748.27; thence North 1,118.85 feet to a point on the Southern boundary of said State Lease No. 17093 having Coordinates of X = 2,131,137.50 and Y = 122,867.12; thence North 62 Degrees 47 Minutes 21 Seconds East 3,111.72 feet along said Southern boundary of said State Lease No. 17093 to the point of beginning, containing approximately **78.21 acres**, all as more particularly outlined on a plat on file in the Office of Mineral Resources, Department of Natural Resources, as provided by the applicant. All bearings, distances and coordinates are based on Louisiana Coordinate System of 1927, (North or South Zone).

NOTE: The above description of the Tract nominated for lease has been provided and corrected, where required, exclusively by the nomination party. Any mineral lease selected from this Tract and awarded by the Louisiana State Mineral Board shall be without warranty of any kind, either express, implied, or statutory, including, but not limited to, the implied warranties of merchantability and fitness for a particular purpose. Should the mineral lease awarded by the Louisiana State Mineral Board be subsequently modified, cancelled or abrogated due to the existence of conflicting leases, operating agreements, private claims or other future obligations or conditions which may affect all or any portion of the leased Tract, it shall not relieve the Lessee of the obligation to pay any bonus due thereon to the Louisiana State Mineral Board, nor shall the Louisiana State Mineral Board be obligated to refund any consideration paid by the Lessor prior to such modification, cancellation, or abrogation, including, but not limited to, bonuses, rentals and royalties.

NOTE: The State of Louisiana does hereby reserve, and this lease shall be subject to, the imprescriptible right of surface use in the nature of a servitude in favor of the Department of Natural Resources, including its Offices and Commissions, for the sole purpose of implementing, constructing, servicing and maintaining approved coastal zone management and/or restoration projects. Utilization of any and all rights derived under this lease by the mineral lessee, its agents, successors or assigns, shall not interfere with nor hinder the reasonable surface use by the Department of Natural Resources, its Offices or Commissions, as herein above reserved.

Applicant: Alpha Land Services, Inc.



Bidder	Cash Payment	Price / Acre	Rental	Oil	Gas	Other

# SHIP SHOAL AREA

BLK. 48  
TR 34820

OPEN

BLK. 47  
S.L. 17091

S.L. 14832

25  
S.L. 14792

OPEN

S.L. 16603

OPEN

OPEN

POINT OF BEGINNING

X= 2,133,904.85'  
Y= 124,290.00'

TR 35085  
78.21 ± ACS.  
DEC., 2002

S.L. 17093

S.L. 14851

S.L. 17092

S.L. 14795

STATE  
FEDERAL

OPEN

BLK. 64

BLK. 63

3 MILE LINE

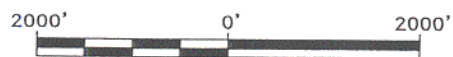
Line of the 1975  
Supreme Court Decree

OPEN

BLK. 72

BLK. 71

TERREBONNE PARISH, LOUISIANA



SCALE IN FEET

LAMBERT GRID NORTH  
NAD 1927 LA. S.Z.

**TRACT 35086 - Portion of Block 64, Ship Shoal Area, Terrebonne Parish, Louisiana**

That portion of Block 64, Ship Shoal Area, Terrebonne Parish, Louisiana, belonging to the State of Louisiana and not presently under mineral lease on December 11, 2002, being more fully described as follows: Beginning at a point on the Federal-State Boundary as defined by decree of the Supreme Court of the United States rendered June 16, 1975 having La. State Plane Coordinates of X = 2,126,158 and Y = 120,067; thence Westerly along said Federal-State boundary on a straight line to the Southwest corner of State Lease No. 17093 having Coordinates of X = 2,124,833.79 and Y = 120,611.20; thence East 1,916.21 feet on the Southern boundary of said State Lease No. 17093 to a corner having Coordinates of X = 2,126,750.00 and Y = 120,611.20; thence South 775.11 feet to a point on said Federal-State boundary having Coordinates of X = 2,126,750.00 and Y = 119,836.09; thence Northwesterly along said Federal-State boundary, following an arc centered at Coordinates of X = 2,133,086 and Y = 136,940 to the point of beginning, containing approximately **17.26 acres, LESS AND EXCEPT** that portion thereof, if any, lying seaward of the line three nautical miles from the coast line of Louisiana, as said three mile line has been decreed by the Supreme Court of the United States, as determined by a Special Master appointed therein, in litigation styled **United States v. State of Louisiana et al No. 9 Original**, in 1975, all as more particularly outlined on a plat on file in the Office of Mineral Resources, Department of Natural Resources, as provided by the applicant. All bearings, distances and coordinates are based on Louisiana Coordinate System of 1927, (North or South Zone).

NOTE: The above description of the Tract nominated for lease has been provided and corrected, where required, exclusively by the nomination party. Any mineral lease selected from this Tract and awarded by the Louisiana State Mineral Board shall be without warranty of any kind, either express, implied, or statutory, including, but not limited to, the implied warranties of merchantability and fitness for a particular purpose. Should the mineral lease awarded by the Louisiana State Mineral Board be subsequently modified, cancelled or abrogated due to the existence of conflicting leases, operating agreements, private claims or other future obligations or conditions which may affect all or any portion of the leased Tract, it shall not relieve the Lessee of the obligation to pay any bonus due thereon to the Louisiana State Mineral Board, nor shall the Louisiana State Mineral Board be obligated to refund any consideration paid by the Lessor prior to such modification, cancellation, or abrogation, including, but not limited to, bonuses, rentals and royalties.

NOTE: The State of Louisiana does hereby reserve, and this lease shall be subject to, the imprescriptible right of surface use in the nature of a servitude in favor of the Department of Natural Resources, including its Offices and Commissions, for the sole purpose of implementing, constructing, servicing and maintaining approved coastal zone management and/or restoration projects. Utilization of any and all rights derived under this lease by the mineral lessee, its agents, successors or assigns,

shall not interfere with nor hinder the reasonable surface use by the Department of Natural Resources, its Offices or Commissions, as herein above reserved.

Applicant: Alpha Land Services, Inc.

Bidder	Cash Payment	Price / Acre	Rental	Oil	Gas	Other

# SHIP SHOAL AREA

BLK. 48  
TR 34820

OPEN

BLK. 47  
S.L. 17091

S.L. 14832

S.L. 14792

28

OPEN

S.L. 16603

OPEN

OPEN

S.L. 17093

S.L. 14851

S.L. 17092

S.L. 14795

STATE  
FEDERAL

OPEN

TR 35086  
17.26 ± ACS.  
DEC., 2002

BLK. 64

BLK. 63

OPEN

3 MILE LINE

Line of the 1975  
Supreme Court Decree

POINT OF BEGINNING

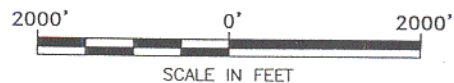
X= 2,126,158'  
Y= 120,067'

BLK. 72

BLK. 71

LAMBERT GRID NORTH  
NAD 1927 LA. S.Z.

TERREBONNE PARISH, LOUISIANA



**TRACT 35087 - Portion of Block 64, Ship Shoal Area, Terrebonne Parish, Louisiana**

That portion of Block 64, Ship Shoal Area, Terrebonne Parish, Louisiana, belonging to the State of Louisiana and not presently under mineral lease on December 11, 2002, being more fully described as follows: Beginning at a point on the Federal-State Boundary as defined by decree of the Supreme Court of the United States rendered June 16, 1975 having La. State Plane Coordinates of X = 2,128,212.50 and Y = 119,363.20; thence Westerly along said Federal-State Boundary, following an arc centered at Coordinates of X = 2,133,086 and Y = 136,940 to a point having Coordinates of X = 2,126,750.00 and Y = 119,836.09; thence North 775.11 feet to a point on the Southern boundary of State Lease No. 17093 having Coordinates of X = 2,126,750.00 and Y = 120,611.20; thence North 62 degrees 47 minutes 21 seconds East 1,644.50 feet along said Southern boundary of said State Lease No. 17093 to a point having Coordinates of X = 2,128,212.50 and Y = 121,363.17; thence South 1,999.97 feet to the point of beginning, containing approximately **46.97 acres, LESS AND EXCEPT** that portion thereof, if any, lying seaward of the line three nautical miles from the coast line of Louisiana, as said three mile line has been decreed by the Supreme Court of the United States, as determined by a Special Master appointed therein, in litigation styled **United States v. State of Louisiana et al No. 9 Original**, in 1975, all as more particularly outlined on a plat on file in the Office of Mineral Resources, Department of Natural Resources, as provided by the applicant. All bearings, distances and coordinates are based on Louisiana Coordinate System of 1927, (North or South Zone).

NOTE: The above description of the Tract nominated for lease has been provided and corrected, where required, exclusively by the nomination party. Any mineral lease selected from this Tract and awarded by the Louisiana State Mineral Board shall be without warranty of any kind, either express, implied, or statutory, including, but not limited to, the implied warranties of merchantability and fitness for a particular purpose. Should the mineral lease awarded by the Louisiana State Mineral Board be subsequently modified, cancelled or abrogated due to the existence of conflicting leases, operating agreements, private claims or other future obligations or conditions which may affect all or any portion of the leased Tract, it shall not relieve the Lessee of the obligation to pay any bonus due thereon to the Louisiana State Mineral Board, nor shall the Louisiana State Mineral Board be obligated to refund any consideration paid by the Lessor prior to such modification, cancellation, or abrogation, including, but not limited to, bonuses, rentals and royalties.

NOTE: The State of Louisiana does hereby reserve, and this lease shall be subject to, the imprescriptible right of surface use in the nature of a servitude in favor of the Department of Natural Resources, including its Offices and Commissions, for the sole purpose of implementing, constructing, servicing and maintaining approved coastal zone management and/or restoration projects. Utilization of any and all rights derived under this lease by the mineral lessee, its agents, successors or assigns,

shall not interfere with nor hinder the reasonable surface use by the Department of Natural Resources, its Offices or Commissions, as herein above reserved.

Applicant: Alpha Land Services, Inc.

Bidder	Cash Payment	Price / Acre	Rental	Oil	Gas	Other

# SHIP SHOAL AREA

BLK. 48  
TR 34820

OPEN

BLK. 47  
S.L. 17091

S.L. 14832

31  
S.L. 14792

OPEN

S.L. 16603

OPEN

OPEN

S.L. 17093

S.L. 14851

S.L. 17092

S.L. 14795

STATE  
FEDERAL

OPEN

BLK. 63

OPEN

TR 35087  
46.97 ± ACS.  
DEC., 2002

BLK. 64

OPEN

3 MILE LINE

Line of the 1975  
Supreme Court Decree

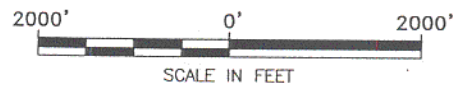
POINT OF BEGINNING

X= 2,128,212.50'  
Y= 119,363.20'

BLK. 72

BLK. 71

TERREBONNE PARISH, LOUISIANA



LAMBERT GRID NORTH  
NAD 1927 LA. S.Z.



**TRACT 35088 - Portion of Block 64, Ship Shoal Area, Terrebonne Parish, Louisiana**

That portion of Block 64, Ship Shoal Area, Terrebonne Parish, Louisiana, belonging to the State of Louisiana and not presently under mineral lease on December 11, 2002, being more fully described as follows: Beginning at a point on the Federal-State Boundary as defined by decree of the Supreme Court of the United States rendered June 16, 1975 having La. State Plane Coordinates of X = 2,129,669 and Y = 119,023; thence Westerly along said Federal-State boundary, following an arc centered at Coordinates of X = 2,133,089 and Y = 136,940 to a point having Coordinates of X = 2,128,212.50 and Y = 119,363.20; thence North 1,999.97 feet to a point on the Southern boundary of State Lease No. 17093 having Coordinates of X = 2,128,212.50 and Y = 121,363.17; thence North 62 Degrees 47 Minutes 21 Seconds East 1,637.75 feet along said Southern boundary of State Lease No. 17093 to a point having Coordinates of X = 2,129,669.00 and Y = 122,112.06; thence South 3,089.06 feet to the point of beginning, containing approximately **85.43 acres, LESS AND EXCEPT** that portion thereof, if any, lying seaward of the line three nautical miles from the coast line of Louisiana, as said three mile line has been decreed by the Supreme Court of the United States, as determined by a Special Master appointed therein, in litigation styled **United States v. State of Louisiana et al No. 9 Original**, in 1975, all as more particularly outlined on a plat on file in the Office of Mineral Resources, Department of Natural Resources, as provided by the applicant. All bearings, distances and coordinates are based on Louisiana Coordinate System of 1927, (North or South Zone).

NOTE: The above description of the Tract nominated for lease has been provided and corrected, where required, exclusively by the nomination party. Any mineral lease selected from this Tract and awarded by the Louisiana State Mineral Board shall be without warranty of any kind, either express, implied, or statutory, including, but not limited to, the implied warranties of merchantability and fitness for a particular purpose. Should the mineral lease awarded by the Louisiana State Mineral Board be subsequently modified, cancelled or abrogated due to the existence of conflicting leases, operating agreements, private claims or other future obligations or conditions which may affect all or any portion of the leased Tract, it shall not relieve the Lessee of the obligation to pay any bonus due thereon to the Louisiana State Mineral Board, nor shall the Louisiana State Mineral Board be obligated to refund any consideration paid by the Lessor prior to such modification, cancellation, or abrogation, including, but not limited to, bonuses, rentals and royalties.

NOTE: The State of Louisiana does hereby reserve, and this lease shall be subject to, the imprescriptible right of surface use in the nature of a servitude in favor of the Department of Natural Resources, including its Offices and Commissions, for the sole purpose of implementing, constructing, servicing and maintaining approved coastal zone management and/or restoration projects. Utilization of any and all rights derived under this lease by the mineral lessee, its agents, successors or assigns,

shall not interfere with nor hinder the reasonable surface use by the Department of Natural Resources, its Offices or Commissions, as herein above reserved.

Applicant: Alpha Land Services, Inc.

Bidder	Cash Payment	Price / Acre	Rental	Oil	Gas	Other

# SHIP SHOAL AREA

BLK. 48  
TR 34820

OPEN

BLK. 47  
S.L. 17091

S.L. 14832

34  
S.L. 14792

OPEN

S.L. 16603

OPEN

OPEN

S.L. 17093

S.L. 14851

S.L. 17092

S.L. 14795

STATE  
FEDERAL

OPEN

OPEN

BLK. 64

BLK. 63

OPEN

TR 35088  
85.43 ± ACS.  
DEC., 2002

3 MILE LINE

Line of the 1975  
Supreme Court Decree

POINT OF BEGINNING

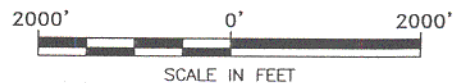
X= 2,129,669'  
Y= 119,023'

BLK. 72

BLK. 71

LAMBERT GRID NORTH  
NAD 1927 LA. S.Z.

TERREBONNE PARISH, LOUISIANA



**TRACT 35089 - Portion of Block 64, Ship Shoal Area, Terrebonne Parish, Louisiana**

That portion of Block 64, Ship Shoal Area, Terrebonne Parish, Louisiana, belonging to the State of Louisiana and not presently under mineral lease on December 11, 2002, being more fully described as follows: Beginning at a point on the Federal-State Boundary as defined by decree of the Supreme Court of the United States rendered June 16, 1975 having La. State Plane Coordinates of X = 2,131,137.50 and Y = 118,746.15; thence Westerly along said Federal-State boundary, following an arc centered at Coordinates of X = 2,134,210 and Y = 136,726 to a point having Coordinates of X = 2,130,790 and Y = 118,809; thence Westerly on a straight line along said Federal-State boundary to a point having Coordinates of X = 2,129,669 and Y = 119,023; thence North 3,089.06 feet to a point on the Southern boundary of State Lease No. 17093 having Coordinates of X = 2,129,669.00 and Y = 122,112.06; thence North 62 degrees 47 minutes 21 seconds East 1,651.24 feet along said Southern boundary of said State Lease No. 17093 to a point having Coordinates of X = 2,131,137.50 and Y = 122,867.12; thence South 4,120.97 feet to the point of beginning, containing approximately **121.58 acres, LESS AND EXCEPT** that portion thereof, if any, lying seaward of the line three nautical miles from the coast line of Louisiana, as said three mile line has been decreed by the Supreme Court of the United States, as determined by a Special Master appointed therein, in litigation styled **United States v. State of Louisiana et al No. 9 Original**, in 1975, all as more particularly outlined on a plat on file in the Office of Mineral Resources, Department of Natural Resources, as provided by the applicant. All bearings, distances and coordinates are based on Louisiana Coordinate System of 1927, (North or South Zone).

NOTE: The above description of the Tract nominated for lease has been provided and corrected, where required, exclusively by the nomination party. Any mineral lease selected from this Tract and awarded by the Louisiana State Mineral Board shall be without warranty of any kind, either express, implied, or statutory, including, but not limited to, the implied warranties of merchantability and fitness for a particular purpose. Should the mineral lease awarded by the Louisiana State Mineral Board be subsequently modified, cancelled or abrogated due to the existence of conflicting leases, operating agreements, private claims or other future obligations or conditions which may affect all or any portion of the leased Tract, it shall not relieve the Lessee of the obligation to pay any bonus due thereon to the Louisiana State Mineral Board, not shall the Louisiana State Mineral Board be obligated to refund any consideration paid by the Lessor prior to such modification, cancellation, or abrogation, including, but not limited to, bonuses, rentals and royalties.

NOTE: The State of Louisiana does hereby reserve, and this lease shall be subject to, the imprescriptible right of surface use in the nature of a servitude in favor of the Department of Natural Resources, including its Offices and Commissions, for the sole purpose of implementing, constructing, servicing and maintaining approved coastal zone management and/or restoration projects. Utilization of any and all rights derived

under this lease by the mineral lessee, its agents, successors or assigns, shall not interfere with nor hinder the reasonable surface use by the Department of Natural Resources, its Offices or Commissions, as herein above reserved.

Applicant: Alpha Land Services, Inc.

Bidder	Cash Payment	Price / Acre	Rental	Oil	Gas	Other

# SHIP SHOAL AREA

BLK. 48  
TR 34820

OPEN

BLK. 47  
S.L. 17091

S.L. 14832

37  
S.L. 14792

OPEN

S.L. 16603

OPEN

OPEN

S.L. 17093

TR 35089  
121.58 ± ACS.  
DEC., 2002

S.L. 14851

S.L. 17092

S.L. 14795

STATE  
FEDERAL

OPEN

BLK. 64

BLK. 63

OPEN

OPEN

3 MILE LINE

Line of the 1975  
Supreme Court Decree

POINT OF BEGINNING

X= 2,131,137.50'

Y= 118,746.15'

BLK. 72

BLK. 71

LAMBERT GRID NORTH  
NAD 1927 LA. S.Z.

TERREBONNE PARISH, LOUISIANA

2000' 0' 2000'

SCALE IN FEET

**TRACT 35090 - Portion of Block 64, Ship Shoal Area, Terrebonne Parish, Louisiana**

That portion of Block 64, Ship Shoal Area, Terrebonne Parish, Louisiana, belonging to the State of Louisiana and not presently under mineral lease on December 11, 2002, being more fully described as follows: Beginning at a point on the Federal-State Boundary as defined by decree of the Supreme Court of the United States rendered June 16, 1975 and being also the Southwest corner of State Lease No. 14795, as amended, having Coordinates of X = 2,132,600.00 and Y = 118,556.59; thence Westerly along said Federal-State boundary, following an arc centered at Coordinates of X = 2,134,210 and Y = 136,726 to a point having Coordinates of X = 2,131,137.50 and Y = 118,746.15; thence North 3,002.12 feet to a point having Coordinates of X = 2,131,137.50 and Y = 121,748.27; thence East 1,462.50 feet to a point on the West line of said State Lease No. 14795 having Coordinates of X = 2,132,600.00 and Y = 121,748.27; thence South 3,191.68 feet on the West line of said State Lease No. 14795 to the point of beginning, containing approximately **104.31 acres, LESS AND EXCEPT** that portion thereof, if any, lying seaward of the line three nautical miles from the coast line of Louisiana, as said three mile line has been decreed by the Supreme Court of the United States, as determined by a Special Master appointed therein, in litigation styled **United States v. State of Louisiana et al No. 9 Original**, in 1975, all as more particularly outlined on a plat on file in the Office of Mineral Resources, Department of Natural Resources, as provided by the applicant. All bearings, distances and coordinates are based on Louisiana Coordinate System of 1927, (North or South Zone).

NOTE: The above description of the Tract nominated for lease has been provided and corrected, where required, exclusively by the nomination party. Any mineral lease selected from this Tract and awarded by the Louisiana State Mineral Board shall be without warranty of any kind, either express, implied, or statutory, including, but not limited to, the implied warranties of merchantability and fitness for a particular purpose. Should the mineral lease awarded by the Louisiana State Mineral Board be subsequently modified, cancelled or abrogated due to the existence of conflicting leases, operating agreements, private claims or other future obligations or conditions which may affect all or any portion of the leased Tract, it shall not relieve the Lessee of the obligation to pay any bonus due thereon to the Louisiana State Mineral Board, nor shall the Louisiana State Mineral Board be obligated to refund any consideration paid by the Lessor prior to such modification, cancellation, or abrogation, including, but not limited to, bonuses, rentals and royalties.

NOTE: The State of Louisiana does hereby reserve, and this lease shall be subject to, the imprescriptible right of surface use in the nature of a servitude in favor of the Department of Natural Resources, including its Offices and Commissions, for the sole purpose of implementing, constructing, servicing and maintaining approved coastal zone management and/or restoration projects. Utilization of any and all rights derived under this lease by the mineral lessee, its agents, successors or assigns,

shall not interfere with nor hinder the reasonable surface use by the Department of Natural Resources, its Offices or Commissions, as herein above reserved.

Applicant: Alpha Land Services, Inc.

Bidder	Cash Payment	Price / Acre	Rental	Oil	Gas	Other



# SHIP SHOAL AREA

BLK. 48  
TR 34820

OPEN

BLK. 47  
S.L. 17091

S.L. 14832

40  
S.L. 14792

OPEN

S.L. 16603

OPEN

OPEN

S.L. 17093

S.L. 14851

S.L. 17092

S.L. 14795

STATE  
FEDERAL

BLK. 63

TR 35090  
104.31 ± ACS.  
DEC., 2002

BLK. 64

3 MILE LINE

OPEN

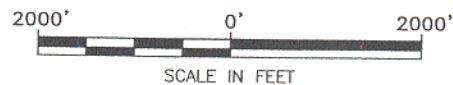
Line of the 1975  
Supreme Court Decree

P.O.B.  
X = 2,132,600.00  
Y = 118,556.59

BLK. 72

BLK. 71

TERREBONNE PARISH, LOUISIANA



LAMBERT GRID NORTH  
NAD 1927 LA. S.Z.

**TRACT 35091 - Portion of Block 41, South Pass Area, Plaquemines Parish, Louisiana**

That portion of Block 41, South Pass Area, Plaquemines Parish, Louisiana, belonging to the State of Louisiana and not presently under mineral lease on December 11, 2002, being more fully described as follows: Beginning at a point having Coordinates of X = 2,613,777.99 and Y = 82,150.00, said point also being on the South line of Block 41, South Pass Area, and on the Southern boundary of State Lease No. 12766, as amended; thence West 1,749.99 feet on and along the South line of said Block 41, South Pass Area, to a point having Coordinates of X = 2,612,028.00 and Y = 82,150.00, said point also being on the Eastern boundary of State Lease No. 15238, as amended; thence North 674.15 feet on and along said Eastern boundary of said State Lease No. 15238, as amended, to a point having Coordinates of X = 2,612,028.00 and Y = 82,824.15, said point also being the most Westerly Southwest corner of said State Lease No. 12766, as amended, and the Southeast corner of State Lease No. 13262, as amended; thence South 68 degrees 55 minutes 55 seconds East 1,875.35 feet on and along said Southern boundary of said State Lease No. 12766, as amended, to the point of beginning, containing approximately **13.54 acres**, all as more particularly outlined on a plat on file in the Office of Mineral Resources, Department of Natural Resources, as provided by the applicant. All bearings, distances and coordinates are based on Louisiana Coordinate System of 1927, (North or South Zone).

NOTE: The above description of the Tract nominated for lease has been provided and corrected, where required, exclusively by the nomination party. Any mineral lease selected from this Tract and awarded by the Louisiana State Mineral Board shall be without warranty of any kind, either express, implied, or statutory, including, but not limited to, the implied warranties of merchantability and fitness for a particular purpose. Should the mineral lease awarded by the Louisiana State Mineral Board be subsequently modified, cancelled or abrogated due to the existence of conflicting leases, operating agreements, private claims or other future obligations or conditions which may affect all or any portion of the leased Tract, it shall not relieve the Lessee of the obligation to pay any bonus due thereon to the Louisiana State Mineral Board, nor shall the Louisiana State Mineral Board be obligated to refund any consideration paid by the Lessor prior to such modification, cancellation, or abrogation, including, but not limited to, bonuses, rentals and royalties.

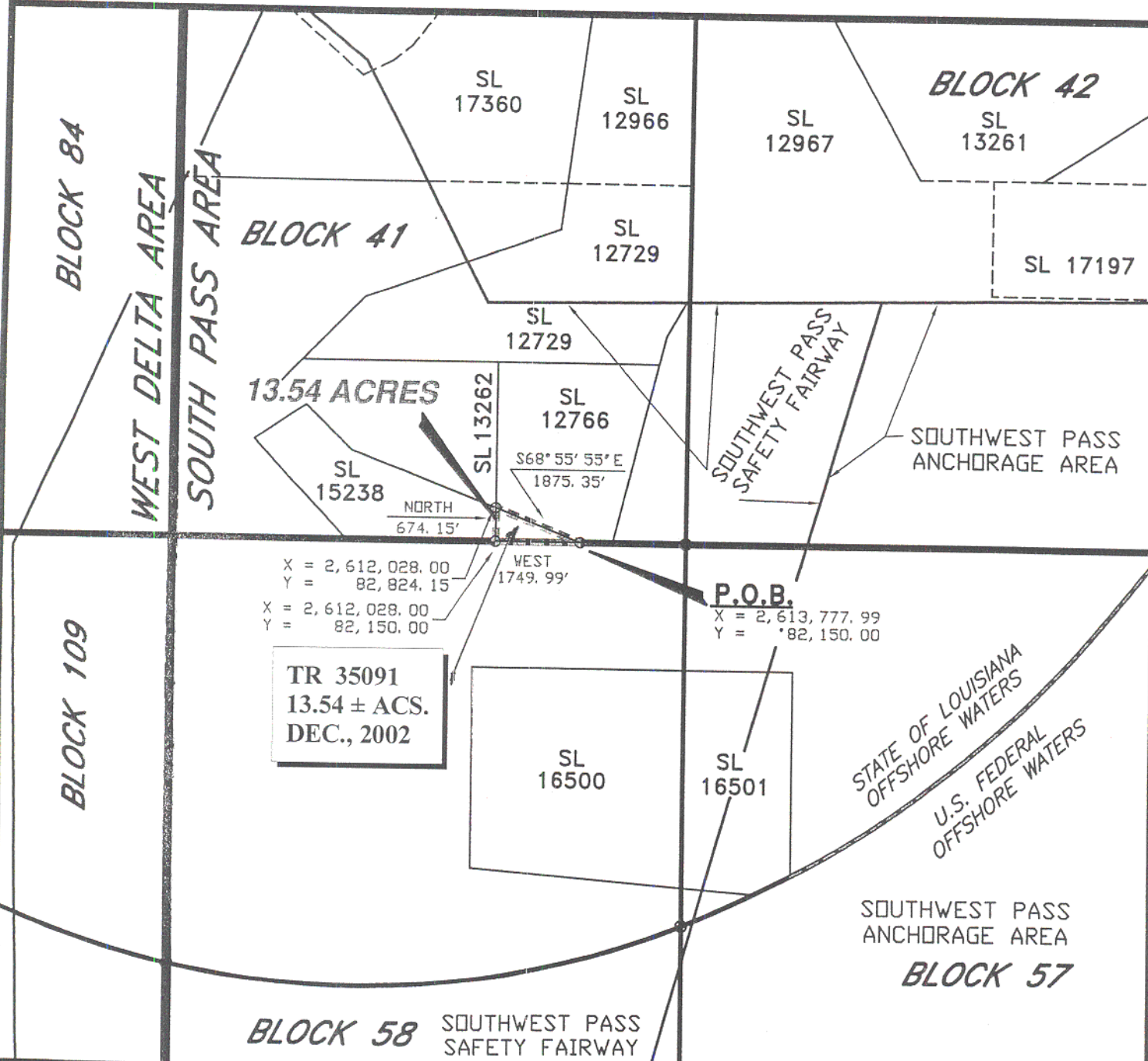
NOTE: It appears, according to our records, that a portion of this Tract is located within the restrictive safety fairway area as set out by the Corps of Engineers, U.S. Army and/or the restrictive anchorage area as set out by the U.S. Coast Guard.

NOTE: The State of Louisiana does hereby reserve, and this lease shall be subject to, the imprescriptible right of surface use in the nature of a servitude in favor of the Department of Natural Resources, including its Offices and Commissions, for the sole purpose of implementing, constructing, servicing and maintaining approved coastal zone management

and/or restoration projects. Utilization of any and all rights derived under this lease by the mineral lessee, its agents, successors or assigns, shall not interfere with nor hinder the reasonable surface use by the Department of Natural Resources, its Offices or Commissions, as herein above reserved.

Applicant: Robert A. Schroeder, Inc.

Bidder	Cash Payment	Price / Acre	Rental	Oil	Gas	Other



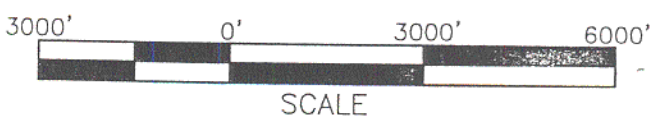
$X = 2,612,028.00$   
 $Y = 82,824.15$   
 $X = 2,612,028.00$   
 $Y = 82,150.00$

**P.O.B.**  
 $X = 2,613,777.99$   
 $Y = 82,150.00$

**TR 35091**  
**13.54 ± ACS.**  
**DEC., 2002**



**BLOCK 41**  
**SOUTH PASS AREA**  
**PLAQUEMINES PARISH, LOUISIANA**  
 SCALE 1" = 3000'



ALL COORDINATES, BEARINGS AND DISTANCES  
 ARE GRID, AND ARE ON THE LOUISIANA  
 LAMBERT PLANE COORDINATE SYSTEM,  
 SOUTH ZONE, 1927 NORTH AMERICAN  
 DATUM.

**TRACT 35092 - Portion of Block 41, South Pass Area, Plaquemines Parish, Louisiana**

That portion of Block 41, South Pass Area, Plaquemines Parish, Louisiana, belonging to the State of Louisiana and not presently under mineral lease on December 11, 2002, being more fully described as follows: Beginning at a point having Coordinates of X = 2,615,928.00 and Y = 82,150.00, said point also being the Southeast corner of Block 41, South Pass Area; thence West 1,500.01 feet on and along the South line of said Block 41, South Pass Area, to a point having Coordinates of X = 2,614,427.99 and Y = 82,150.00, said point also being on the Eastern boundary of State Lease No. 12766, as amended; thence North 14 degrees 10 minutes 04 seconds East 3,712.94 feet on and along said Eastern boundary of said State Lease No. 12766, as amended, to a point having Coordinates of X = 2,615,336.77 and Y = 85,750.00, said point also being the Northeast corner of said State Lease No. 12766, as amended, and the Southeast corner of State Lease No. 12729, as amended; thence on and along the Eastern boundary of said State Lease No. 12729, as amended, the following courses and distances, to-wit: North 14 degrees 10 minutes 04 seconds East 591.18 feet to a point having Coordinates of X = 2,615,481.47 and Y = 86,323.20; and North 29 degrees 44 minutes 42 seconds East 900.00 feet to a point having Coordinates of X = 2,615,928.00 and Y = 87,104.62, said point also being on the East line of said Block 41, South Pass Area; thence South 4,954.62 feet on and along said East line of said Block 41, South Pass Area, to the point of beginning, containing approximately **97.25 acres**, all as more particularly outlined on a plat on file in the Office of Mineral Resources, Department of Natural Resources, as provided by the applicant. All bearings, distances and coordinates are based on Louisiana Coordinate System of 1927, (North or South Zone).

NOTE: The above description of the Tract nominated for lease has been provided and corrected, where required, exclusively by the nomination party. Any mineral lease selected from this Tract and awarded by the Louisiana State Mineral Board shall be without warranty of any kind, either express, implied, or statutory, including, but not limited to, the implied warranties of merchantability and fitness for a particular purpose. Should the mineral lease awarded by the Louisiana State Mineral Board be subsequently modified, cancelled or abrogated due to the existence of conflicting leases, operating agreements, private claims or other future obligations or conditions which may affect all or any portion of the leased Tract, it shall not relieve the Lessee of the obligation to pay any bonus due thereon to the Louisiana State Mineral Board, nor shall the Louisiana State Mineral Board be obligated to refund any consideration paid by the Lessor prior to such modification, cancellation, or abrogation, including, but not limited to, bonuses, rentals and royalties.

NOTE: It appears, according to our records, that a portion of this Tract is located within the restrictive safety fairway area as set out by the Corps of Engineers, U.S. Army and/or the restrictive anchorage area as set out by the U.S. Coast Guard.

NOTE: The State of Louisiana does hereby reserve, and this lease shall be subject to, the imprescriptible right of surface use in the nature of a servitude in favor of the Department of Natural Resources, including its Offices and Commissions, for the sole purpose of implementing, constructing, servicing and maintaining approved coastal zone management and/or restoration projects. Utilization of any and all rights derived under this lease by the mineral lessee, its agents, successors or assigns, shall not interfere with nor hinder the reasonable surface use by the Department of Natural Resources, its Offices or Commissions, as herein above reserved.

Applicant: Robert A. Schroeder, Inc.

Bidder	Cash Payment	Price / Acre	Rental	Oil	Gas	Other

LINE No.	BEARING	DISTANCE (in feet)
1	N90° 00' 00" W	1500. 01
2	N14° 10' 04" E	3712. 94
3	N14° 10' 04" E	591. 18
4	N29° 44' 42" E	900. 00
5	S00° 00' 00" E	4954. 62

**SOUTH PASS AREA**

**BLOCK 40**

**BLOCK 39**

SL 16870

SOUTHWEST PASS ANCHORAGE AREA

SL 16991

**BLOCK 42**

SL 17199

SL 17360

SL 12966

SL 12967

SL 13261

SL 12729  
**BLOCK 41**

X = 2, 615, 928. 00  
Y = 87, 104. 62

SL 17197

SL 16869

SL 17196

**BLOCK 43**

X = 2, 615, 336. 77  
Y = 85, 750. 00

SL 13262

SL 15238

SOUTHWEST PASS SAFETY FAIRWAY

SOUTHWEST PASS ANCHORAGE AREA

TR 35092  
97.25 ± ACS.  
DEC., 2002

**P.O.B.**

X = 2, 615, 928. 00  
Y = 82, 150. 00

STATE OF LOUISIANA OFFSHORE WATERS  
U.S. FEDERAL OFFSHORE WATERS

SOUTHWEST PASS ANCHORAGE AREA

X = 2, 614, 427. 99  
Y = 82, 150. 00

**BLOCK 58**

**BLOCK 56**

SL 16500

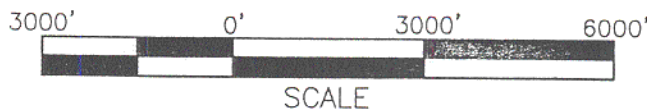
SL 16501

**BLOCK 57**

ALL COORDINATES, BEARINGS AND DISTANCES ARE GRID, AND ARE ON THE LOUISIANA LAMBERT PLANE COORDINATE SYSTEM, SOUTH ZONE, 1927 NORTH AMERICAN DATUM.



**BLOCK 41**  
**SOUTH PASS AREA**  
**PLAQUEMINES PARISH, LOUISIANA**  
SCALE 1" = 3000'





**TRACT 35093 - Portion of Block 58, South Pass Area, Plaquemines Parish, Louisiana**

That portion of Block 58, South Pass Area, Plaquemines Parish, Louisiana, belonging to the State of Louisiana and not presently under mineral lease on December 11, 2002, being more fully described as follows: Beginning at a point having Coordinates of X = 2,615,928.00 and Y = 82,150.00, said point also being the Northeast corner of Block 58, South Pass Area; thence South 2,526.08 feet on and along the East line of said Block 58 to a point having Coordinates of X = 2,615,928.00 and Y = 79,623.92, said point also being the Northeast corner of State Lease No. 16500, as amended; thence on and along the Northern, Western, and Southern boundaries of said State Lease No. 16500 the following courses: West 4,324.00 feet to a point having Coordinates of X = 2,611,604.00 and Y = 79,623.92; South 4,030.24 feet to a point having Coordinates of X = 2,611,604.00 and Y = 75,593.68; and South 85 degrees 36 minutes 09 seconds East 4,336.77 feet to a point having Coordinates of X = 2,615,928.00 and Y = 75,261.15, said point also being on said East line of said Block 58; thence South 762.65 feet on and along said East line of said Block 58 to a point having Coordinates of X = 2,615,928.00 and Y = 74,498.50; thence 10,640.22 feet on a non-tangent curve to the right having a radius of 18,240.60 feet to a point having Coordinates of X = 2,605,477.93 and Y = 73,584.03, said point also being on the West line of said Block 58; thence North 8,565.97 feet on and along said West line of said Block 58 to a point having Coordinates of X = 2,605,477.93 and Y = 82,150.00, said point also being on the Northwest corner of said Block 58; thence East 10,450.07 feet on and along the North line of said Block 58 to the point of beginning, **LESS AND EXCEPT** that portion thereof, if any, lying seaward of the line three nautical miles from the coast line of Louisiana, as said three mile line has been decreed by the Supreme Court of the United States, as determined by a Special Master appointed therein, in litigation styled **United States v. State of Louisiana et al No. 9 Original**, in 1975, containing approximately **1,652.93 acres**, all as more particularly outlined on a plat on file in the Office of Mineral Resources, Department of Natural Resources, as provided by the applicant. All bearings, distances and coordinates are based on Louisiana Coordinate System of 1927, (North or South Zone).

NOTE: The above description of the Tract nominated for lease has been provided and corrected, where required, exclusively by the nomination party. Any mineral lease selected from this Tract and awarded by the Louisiana State Mineral Board shall be without warranty of any kind, either express, implied, or statutory, including, but not limited to, the implied warranties of merchantability and fitness for a particular purpose. Should the mineral lease awarded by the Louisiana State Mineral Board be subsequently modified, cancelled or abrogated due to the existence of conflicting leases, operating agreements, private claims or other future obligations or conditions which may affect all or any portion of the leased Tract, it shall not relieve the Lessee of the obligation to pay any bonus due thereon to the Louisiana State Mineral Board, nor shall the Louisiana State Mineral Board be obligated to refund any consideration



paid by the Lessor prior to such modification, cancellation, or abrogation, including, but not limited to, bonuses, rentals and royalties.

NOTE: It appears, according to our records, that a portion of this Tract is located within the restrictive safety fairway area as set out by the Corps of Engineers, U.S. Army and/or the restrictive anchorage area as set out by the U.S. Coast Guard.

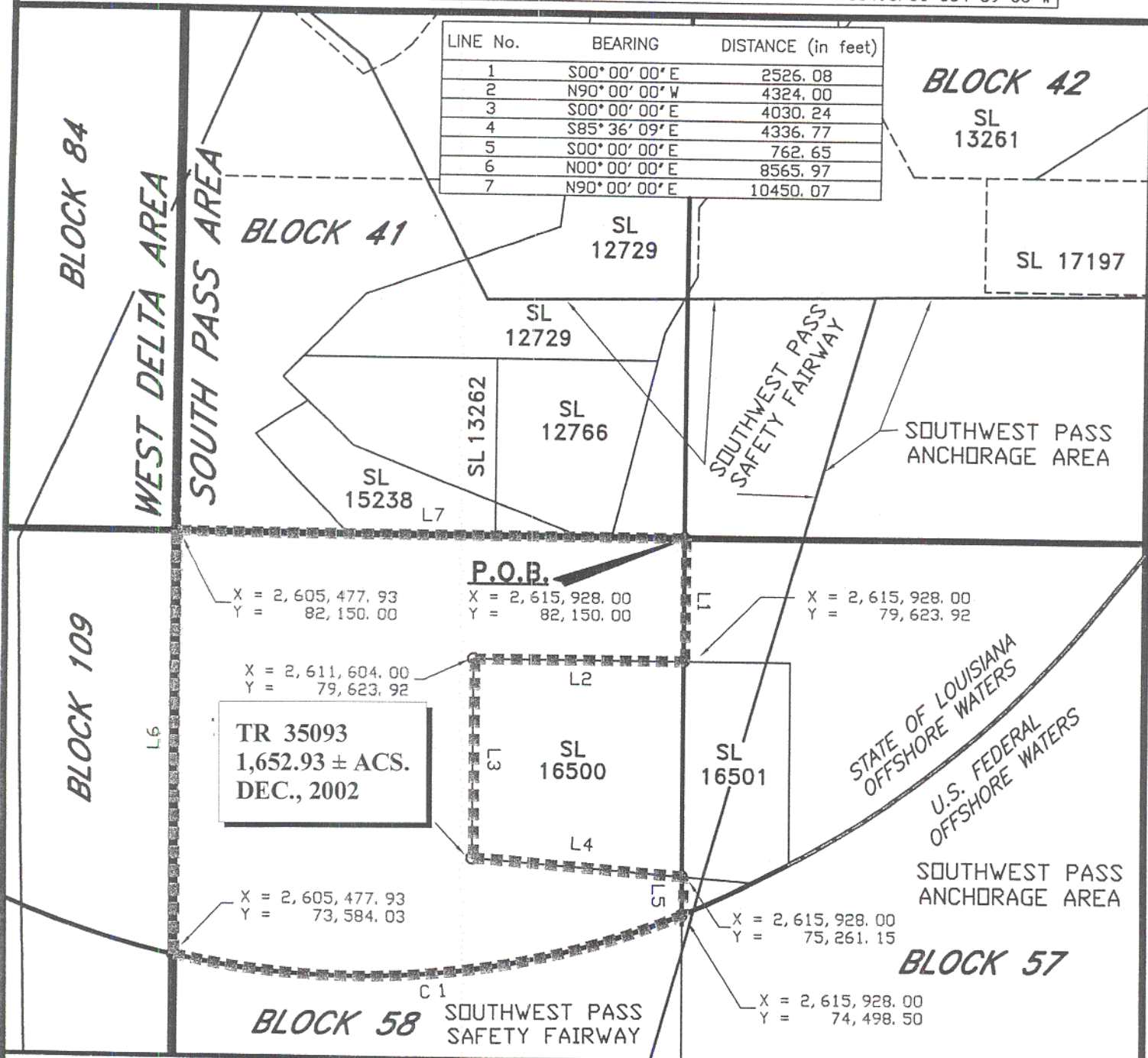
NOTE: The State of Louisiana does hereby reserve, and this lease shall be subject to, the imprescriptible right of surface use in the nature of a servitude in favor of the Department of Natural Resources, including its Offices and Commissions, for the sole purpose of implementing, constructing, servicing and maintaining approved coastal zone management and/or restoration projects. Utilization of any and all rights derived under this lease by the mineral lessee, its agents, successors or assigns, shall not interfere with nor hinder the reasonable surface use by the Department of Natural Resources, its Offices or Commissions, as herein above reserved.

Applicant: Robert A. Schroeder, Inc.

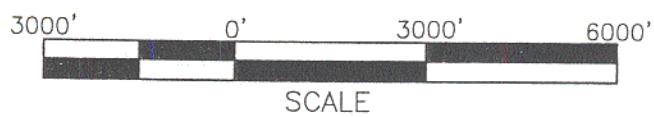
Bidder	Cash Payment	Price / Acre	Rental	Oil	Gas	Other

CURVE No.	DELTA	RADIUS	ARC LENGTH	TANGENT	CHORD
1	33° 25' 20"	18240.60	10640.22	5476.28	10490.01 S84° 59' 56" W

LINE No.	BEARING	DISTANCE (in feet)
1	S00° 00' 00" E	2526.08
2	N90° 00' 00" W	4324.00
3	S00° 00' 00" E	4030.24
4	S85° 36' 09" E	4336.77
5	S00° 00' 00" E	762.65
6	N00° 00' 00" E	8565.97
7	N90° 00' 00" E	10450.07



BLOCK 58  
SOUTH PASS AREA  
PLAQUEMINES PARISH, LOUISIANA  
SCALE 1" = 3000'



ALL COORDINATES, BEARINGS AND DISTANCES ARE GRID, AND ARE ON THE LOUISIANA LAMBERT PLANE COORDINATE SYSTEM, SOUTH ZONE, 1927 NORTH AMERICAN DATUM.