

TRACT 35156 - Terrebonne Parish, Louisiana

All of the lands now or formerly constituting the beds and bottoms of all water bodies of every nature and description, and all islands and other lands formed by accretion, where allowed by law, or by reliction, and excepting tax adjudicated lands, belonging to the State of Louisiana and not presently under mineral lease on December 11, 2002, situated in Terrebonne Parish, Louisiana, and more particularly described as follows: Beginning at a point having Coordinates of X = 2,236,099.29 and Y = 282,872.26; thence South 09 degrees 48 minutes 00 seconds West 18,480.00 feet to a point having Coordinates of X = 2,232,953.82 and Y = 264,661.92; thence North 80 degrees 11 minutes 59 seconds West 3,700.00 feet to a point having Coordinates of X = 2,229,307.81 and Y = 265,291.71; thence North 09 degrees 48 minutes 00 seconds East 18,480.00 feet to a point having Coordinates of X = 2,232,453.28 and Y = 283,502.05; thence South 80 degrees 11 minutes 59 seconds East 3,700.00 feet to the point of beginning, containing approximately **65 acres**, all as more particularly outlined on a plat on file in the Office of Mineral Resources, Department of Natural Resources, as provided by the applicant. All bearings, distances and coordinates are based on Louisiana Coordinate System of 1927, (North or South Zone), where applicable.

NOTE: The above description of the Tract nominated for lease has been provided and corrected, where required, exclusively by the nomination party. Any mineral lease selected from this Tract and awarded by the Louisiana State Mineral Board shall be without warranty of any kind, either express, implied, or statutory, including, but not limited to, the implied warranties of merchantability and fitness for a particular purpose. Should the mineral lease awarded by the Louisiana State Mineral Board be subsequently modified, cancelled or abrogated due to the existence of conflicting leases, operating agreements, private claims or other future obligations or conditions which may affect all or any portion of the leased Tract, it shall not relieve the Lessee of the obligation to pay any bonus due thereon to the Louisiana State Mineral Board, nor shall the Louisiana State Mineral Board be obligated to refund any consideration paid by the Lessor prior to such modification, cancellation, or abrogation, including, but not limited to, bonuses, rentals and royalties.

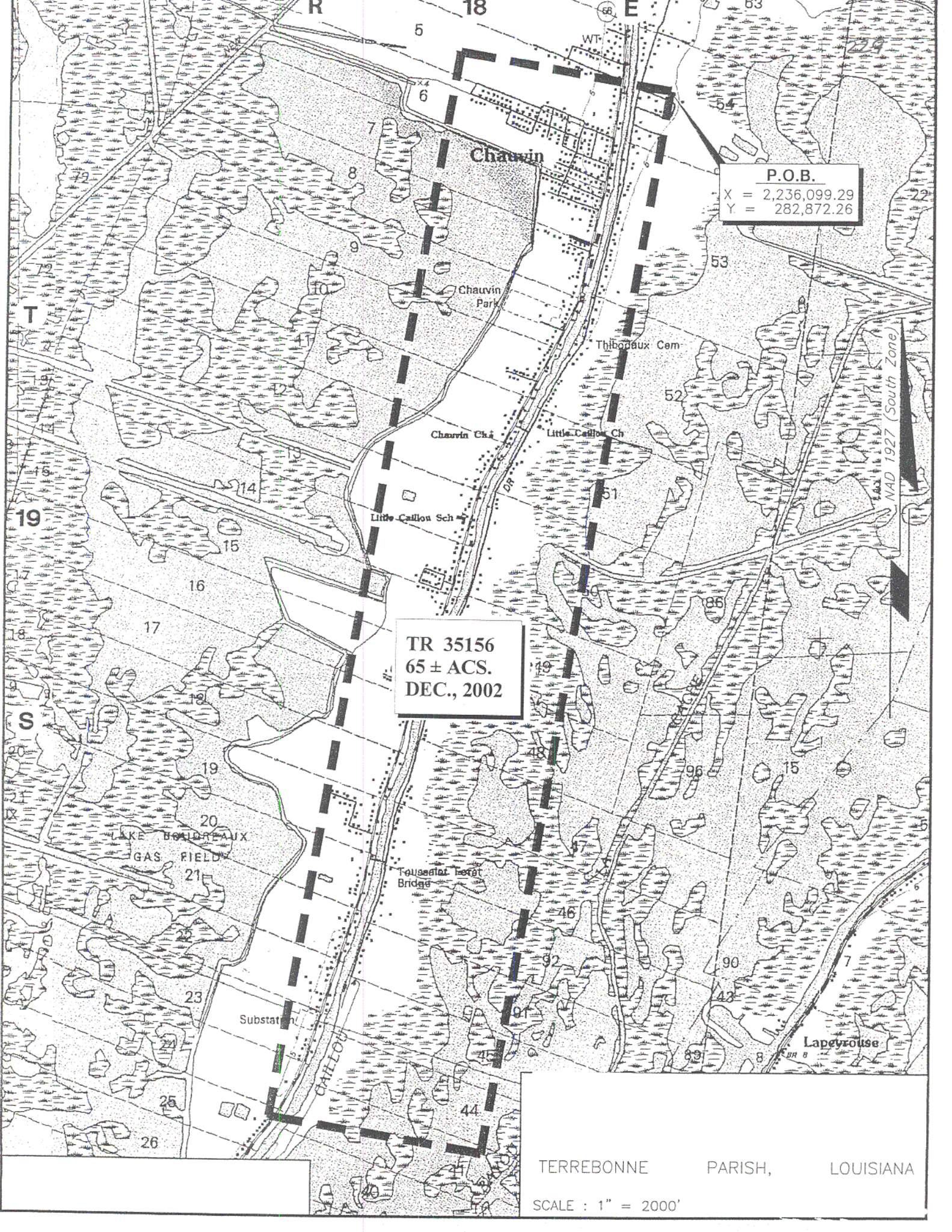
NOTE: The Department of Wildlife and Fisheries has designated certain areas in the coastal waters of the State of Louisiana as Oyster Seed Bed Areas. The exact location of those Seed Bed Areas must be obtained from the Department of Wildlife and Fisheries and any work done under a mineral lease from the State of Louisiana may necessarily be conducted in conformity with the rules and regulations promulgated by the said Department of Wildlife and Fisheries for Oyster Seed Bed Areas.

NOTE: The State of Louisiana does hereby reserve, and this lease shall be subject to, the imprescriptible right of surface use in the nature of a servitude in favor of the Department of Natural Resources, including its Offices and Commissions, for the sole purpose of implementing, constructing, servicing and maintaining approved coastal zone management

and/or restoration projects. Utilization of any and all rights derived under this lease by the mineral lessee, its agents, successors or assigns, shall not interfere with nor hinder the reasonable surface use by the Department of Natural Resources, its Offices or Commissions, as herein above reserved.

Applicant: Ken Savage & Associates, Inc.

| Bidder | Cash Payment | Price / Acre | Rental | Oil | Gas | Other |
|--------|--------------|--------------|--------|-----|-----|-------|
| | | | | | | |
| | | | | | | |
| | | | | | | |
| | | | | | | |



TR 35156
65 ± ACS.
DEC., 2002

P.O.B.
X = 2,236,099.29
Y = 282,872.26

NAD 1927 (South Zone)

TERREBONNE PARISH, LOUISIANA
SCALE : 1" = 2000'

TRACT 35157 - Lafourche Parish, Louisiana

All of the lands now or formerly constituting the beds and bottoms of all water bodies of every nature and description, and all islands and other lands formed by accretion, where allowed by law, or by reliction, and excepting tax adjudicated lands, belonging to the State of Louisiana and not presently under mineral lease on December 11, 2002, situated in Lafourche Parish, Louisiana, and more particularly described as follows: Beginning at a point having Coordinates of X = 2,333,220.00 and Y = 222,442.15; thence North 10,457.85 feet to a point having Coordinates of X = 2,333,220.00 and Y = 232,900.00; thence East 12,774.24 feet to a point having Coordinates of X = 2,345,994.24 and Y = 232,900.00; thence Southerly approximately 10,458 feet to the Northwest corner of State Lease No. 1908, as amended; thence Westerly approximately 12,774 feet to the point of beginning, containing approximately **143 acres**, all as more particularly outlined on a plat on file in the Office of Mineral Resources, Department of Natural Resources, as provided by the applicant. All bearings, distances and coordinates are based on Louisiana Coordinate System of 1927, (North or South Zone), where applicable.

NOTE: The above description of the Tract nominated for lease has been provided and corrected, where required, exclusively by the nomination party. Any mineral lease selected from this Tract and awarded by the Louisiana State Mineral Board shall be without warranty of any kind, either express, implied, or statutory, including, but not limited to, the implied warranties of merchantability and fitness for a particular purpose. Should the mineral lease awarded by the Louisiana State Mineral Board be subsequently modified, cancelled or abrogated due to the existence of conflicting leases, operating agreements, private claims or other future obligations or conditions which may affect all or any portion of the leased Tract, it shall not relieve the Lessee of the obligation to pay any bonus due thereon to the Louisiana State Mineral Board, nor shall the Louisiana State Mineral Board be obligated to refund any consideration paid by the Lessor prior to such modification, cancellation, or abrogation, including, but not limited to, bonuses, rentals and royalties.

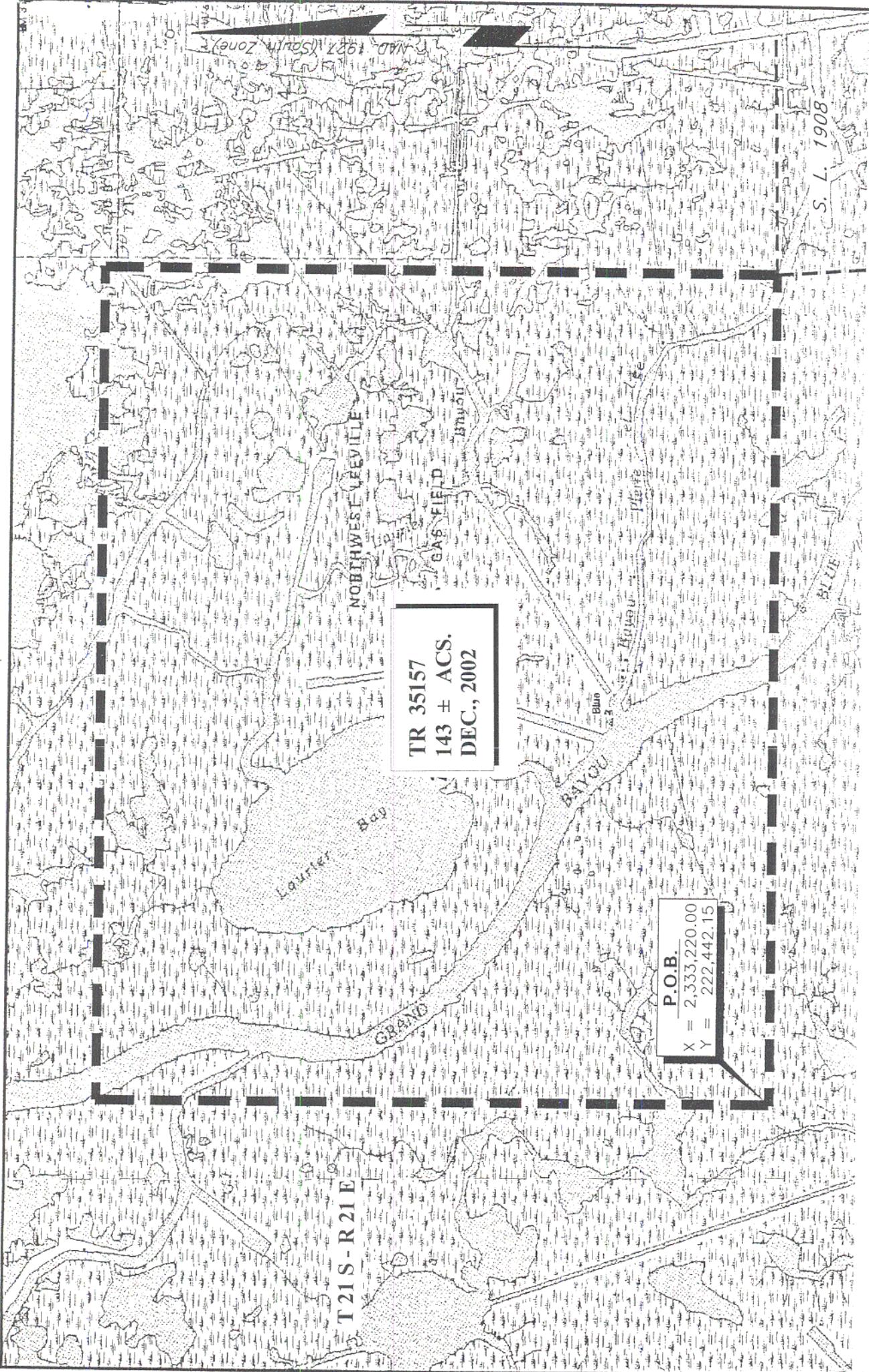
NOTE: The Department of Wildlife and Fisheries has designated certain areas in the coastal waters of the State of Louisiana as Oyster Seed Bed Areas. The exact location of those Seed Bed Areas must be obtained from the Department of Wildlife and Fisheries and any work done under a mineral lease from the State of Louisiana may necessarily be conducted in conformity with the rules and regulations promulgated by the said Department of Wildlife and Fisheries for Oyster Seed Bed Areas.

NOTE: The State of Louisiana does hereby reserve, and this lease shall be subject to, the imprescriptible right of surface use in the nature of a servitude in favor of the Department of Natural Resources, including its Offices and Commissions, for the sole purpose of implementing, constructing, servicing and maintaining approved coastal zone management and/or restoration projects. Utilization of any and all rights derived under this lease by the mineral lessee, its agents, successors or assigns,

shall not interfere with nor hinder the reasonable surface use by the Department of Natural Resources, its Offices or Commissions, as herein above reserved.

Applicant: Genesis Resources Corporation

| Bidder | Cash Payment | Price / Acre | Rental | Oil | Gas | Other |
|--------|--------------|--------------|--------|-----|-----|-------|
| | | | | | | |
| | | | | | | |
| | | | | | | |
| | | | | | | |



TR 35157
 143 ± ACS.
 DEC., 2002

P.O.B.
 X = 2,333,220.00
 Y = 222,442.15

T 21 S - R 21 E

S. L. 1908

MAID (SOUTH ZONE)

TRACT 35158 - Lafourche Parish, Louisiana

All of the lands now or formerly constituting the beds and bottoms of all water bodies of every nature and description, and all islands and other lands formed by accretion, where allowed by law, or by reliction, and excepting tax adjudicated lands, belonging to the State of Louisiana and not presently under mineral lease on December 11, 2002, situated in Lafourche Parish, Louisiana, and more particularly described as follows: Beginning at a point having Coordinates of X = 2,333,220.00 and Y = 222,442.15; thence East approximately 12,774 feet to the Northwest corner of State Lease No. 1908, as amended; thence Southeasterly approximately 4,764 feet along the West line of said State Lease No. 1908 to its Southwest corner, said corner also being the Northwest corner of State Lease No. 17231; thence South 07 degrees 24 minutes 29 seconds East 4,910.76 feet along the West line of said State Lease No. 17231 to its Southwest corner having Coordinates of X = 2,346,942.17 and Y = 212,818.84; thence North 88 degrees 28 minutes 00 seconds East 4,759.53 feet along the South line of said State Lease No. 17231 to its Southeast corner, said corner also being a point on the West line of State Lease No. 16707, having Coordinates of X = 2,351,700.00 and Y = 212,946.20; thence South 346.20 feet along the West line of said State Lease No. 16707 to its Southwest corner, said corner also being the Northwest corner of State Lease No. 16708, having Coordinates of X = 2,351,700.00 and Y = 212,600.00; thence South 650.00 feet along the West line of said State Lease No. 16708 to a point having Coordinates of X = 2,351,700.00 and Y = 211,950.00; thence West 18,480.00 feet to a point having Coordinates of X = 2,333,220.00 and Y = 211,950.00; thence North 10,492.15 feet to the point of beginning, containing approximately **1,498 acres**, all as more particularly outlined on a plat on file in the Office of Mineral Resources, Department of Natural Resources, as provided by the applicant. All bearings, distances and coordinates are based on Louisiana Coordinate System of 1927, (North or South Zone), where applicable.

NOTE: The above description of the Tract nominated for lease has been provided and corrected, where required, exclusively by the nomination party. Any mineral lease selected from this Tract and awarded by the Louisiana State Mineral Board shall be without warranty of any kind, either express, implied, or statutory, including, but not limited to, the implied warranties of merchantability and fitness for a particular purpose. Should the mineral lease awarded by the Louisiana State Mineral Board be subsequently modified, cancelled or abrogated due to the existence of conflicting leases, operating agreements, private claims or other future obligations or conditions which may affect all or any portion of the leased Tract, it shall not relieve the Lessee of the obligation to pay any bonus due thereon to the Louisiana State Mineral Board, nor shall the Louisiana State Mineral Board be obligated to refund any consideration paid by the Lessor prior to such modification, cancellation, or abrogation, including, but not limited to, bonuses, rentals and royalties.

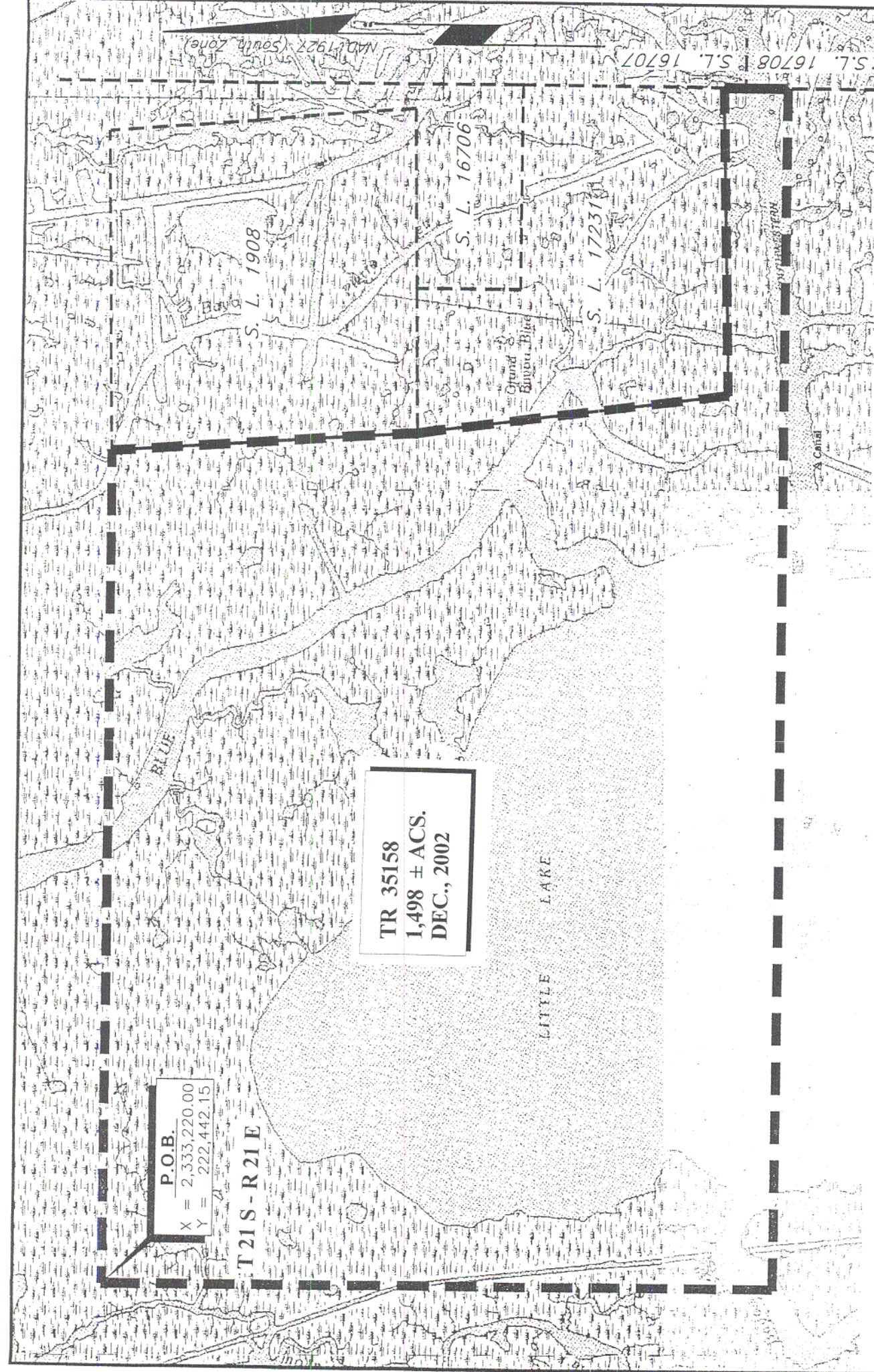
NOTE: The Department of Wildlife and Fisheries has designated certain areas in the coastal waters of the State of Louisiana as Oyster Seed Bed

Areas. The exact location of those Seed Bed Areas must be obtained from the Department of Wildlife and Fisheries and any work done under a mineral lease from the State of Louisiana may necessarily be conducted in conformity with the rules and regulations promulgated by the said Department of Wildlife and Fisheries for Oyster Seed Bed Areas.

NOTE: The State of Louisiana does hereby reserve, and this lease shall be subject to, the imprescriptible right of surface use in the nature of a servitude in favor of the Department of Natural Resources, including its Offices and Commissions, for the sole purpose of implementing, constructing, servicing and maintaining approved coastal zone management and/or restoration projects. Utilization of any and all rights derived under this lease by the mineral lessee, its agents, successors or assigns, shall not interfere with nor hinder the reasonable surface use by the Department of Natural Resources, its Offices or Commissions, as herein above reserved.

Applicant: Genesis Resources Corporation

| Bidder | Cash Payment | Price / Acre | Rental | Oil | Gas | Other |
|--------|--------------|--------------|--------|-----|-----|-------|
| | | | | | | |
| | | | | | | |
| | | | | | | |
| | | | | | | |



P.O.B.
 X = 2,333,220.00
 Y = 222,442.15

T21S-R21E

TR 35158
 1,498 ± ACS.
 DEC., 2002

NAD 1927 (South Zone)

S.L. 16708 S.L. 16707

S. L. 1908

S. L. 16706

S. L. 17231

Grand Bayou Blue

LITTLE LAKE

Canal

Bayou L. 1731

TRACT 35159 - Lafourche Parish, Louisiana

All of the lands now or formerly constituting the beds and bottoms of all water bodies of every nature and description, and all islands and other lands formed by accretion, where allowed by law, or by reliction, and excepting tax adjudicated lands, belonging to the State of Louisiana and not presently under mineral lease on December 11, 2002, situated in Lafourche Parish, Louisiana, and more particularly described as follows: Beginning at a point having Coordinates of X = 2,344,950.00 and Y = 201,475.00; thence West 13,250.00 feet to a point having Coordinates of X = 2,331,700.00 and Y = 201,475.00; thence North 10,475.00 feet to a point having Coordinates of X = 2,331,700.00 and Y = 211,950.00; thence East 13,250.00 feet to a point having Coordinates of X = 2,344,950.00 and Y = 211,950.00; thence South 4,431.14 feet to a point on the boundary of State Lease No. 13604, as amended, having Coordinates of X = 2,344,950.00 and Y = 207,518.86; thence along the boundary of said State Lease No. 13604, as amended, the following courses: South 35 degrees 44 minutes 07 seconds West 289.72 feet to a point having Coordinates of X = 2,344,780.79 and Y = 207,283.69; South 31 degrees 11 minutes 20 seconds West 294.19 feet to a point having Coordinates of X = 2,344,628.44 and Y = 207,032.02; South 31 degrees 51 minutes 12 seconds West 165.02 feet to a point having Coordinates of X = 2,344,541.35 and Y = 206,891.85; South 33 degrees 27 minutes 53 seconds West 153.11 feet to a point having Coordinates of X = 2,344,456.92 and Y = 206,764.12; South 40 degrees 03 minutes 27 seconds West 207.81 feet to a point having Coordinates of X = 2,344,323.19 and Y = 206,605.06; South 43 degrees 12 minutes 54 seconds West 340.51 feet to a point having Coordinates of X = 2,344,090.03 and Y = 206,356.90; South 46 degrees 25 minutes 17 seconds West 340.93 feet to a point having Coordinates of X = 2,343,843.05 and Y = 206,121.89; South 01 degrees 12 minutes 13 seconds East 418.46 feet to a point having Coordinates of X = 2,343,851.84 and Y = 205,703.52; South 77 degrees 13 minutes 42 seconds East 425.12 feet to a point having Coordinates of X = 2,344,266.44 and Y = 205,609.54; South 74 degrees 24 minutes 37 seconds East 427.58 feet to a point having Coordinates of X = 2,344,678.29 and Y = 205,494.63 and South 76 degrees 12 minutes 52 seconds East 279.77 feet to a point having Coordinates of X = 2,344,950.00 and Y = 205,427.96; thence South 3,952.96 feet to the point of beginning, containing approximately **2,490 acres**, all as more particularly outlined on a plat on file in the Office of Mineral Resources, Department of Natural Resources, as provided by the applicant. All bearings, distances and coordinates are based on Louisiana Coordinate System of 1927, (North or South Zone), where applicable.

NOTE: The above description of the Tract nominated for lease has been provided and corrected, where required, exclusively by the nomination party. Any mineral lease selected from this Tract and awarded by the Louisiana State Mineral Board shall be without warranty of any kind, either express, implied, or statutory, including, but not limited to, the implied warranties of merchantability and fitness for a particular purpose. Should the mineral lease awarded by the Louisiana State Mineral Board be subsequently modified, cancelled or abrogated due to the existence of conflicting leases, operating agreements, private claims or

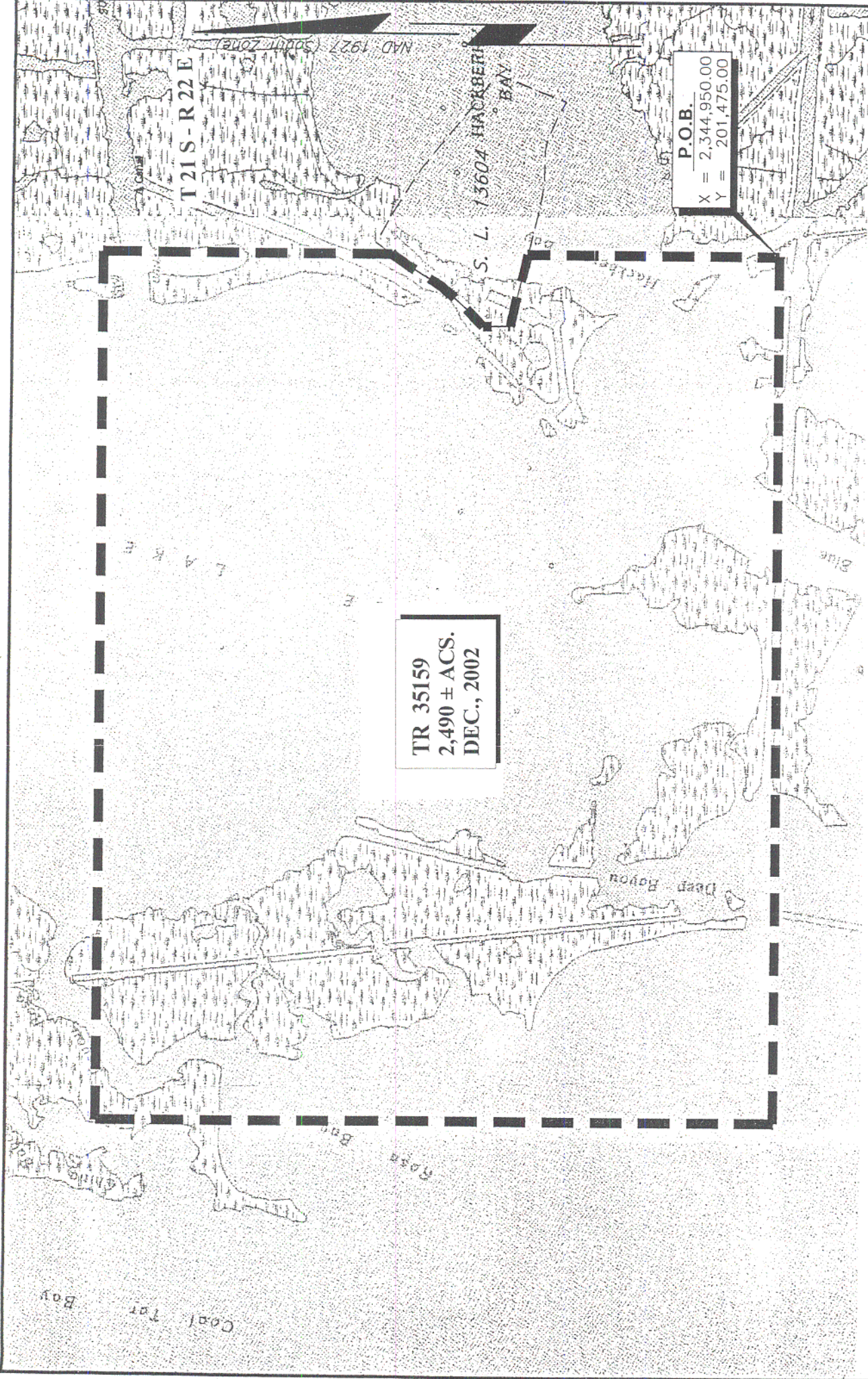
other future obligations or conditions which may affect all or any portion of the leased Tract, it shall not relieve the Lessee of the obligation to pay any bonus due thereon to the Louisiana State Mineral Board, not shall the Louisiana State Mineral Board be obligated to refund any consideration paid by the Lessor prior to such modification, cancellation, or abrogation, including, but not limited to, bonuses, rentals and royalties.

NOTE: The Department of Wildlife and Fisheries has designated certain areas in the coastal waters of the State of Louisiana as Oyster Seed Bed Areas. The exact location of those Seed Bed Areas must be obtained from the Department of Wildlife and Fisheries and any work done under a mineral lease from the State of Louisiana may necessarily be conducted in conformity with the rules and regulations promulgated by the said Department of Wildlife and Fisheries for Oyster Seed Bed Areas.

NOTE: The State of Louisiana does hereby reserve, and this lease shall be subject to, the imprescriptible right of surface use in the nature of a servitude in favor of the Department of Natural Resources, including its Offices and Commissions, for the sole purpose of implementing, constructing, servicing and maintaining approved coastal zone management and/or restoration projects. Utilization of any and all rights derived under this lease by the mineral lessee, its agents, successors or assigns, shall not interfere with nor hinder the reasonable surface use by the Department of Natural Resources, its Offices or Commissions, as herein above reserved.

Applicant: Genesis Resources Corporation

| Bidder | Cash Payment | Price / Acre | Rental | Oil | Gas | Other |
|--------|--------------|--------------|--------|-----|-----|-------|
| | | | | | | |
| | | | | | | |
| | | | | | | |
| | | | | | | |



TRACT 35160 - Lafourche Parish, Louisiana

All of the lands now or formerly constituting the beds and bottoms of all water bodies of every nature and description, and all islands and other lands formed by accretion, where allowed by law, or by reliction, and excepting tax adjudicated lands, belonging to the State of Louisiana and not presently under mineral lease on December 11, 2002, situated in Lafourche Parish, Louisiana, and more particularly described as follows: Beginning at a point having Coordinates of X = 2,344,950.00 and Y = 201,475.00; thence North 3,952.96 feet to a point on the boundary of State Lease No. 13604, as amended, having Coordinates of X = 2,344,950.00 and Y = 205,427.96; thence along the boundary of said State Lease No. 13604 the following courses: South 76 degrees 12 minutes 52 seconds East 739.33 feet to a point having Coordinates of X = 2,345,668.03 and Y = 205,251.79; South 80 degrees 24 minutes 12 seconds East 400.58 feet to a point having Coordinates of X = 2,346,063.01 and Y = 205,185.01; South 89 degrees 13 minutes 40 seconds East 153.58 feet to a point having Coordinates of X = 2,346,216.57 and Y = 205,182.94; South 89 degrees 23 minutes 02 seconds East 309.74 feet to a point having Coordinates of X = 2,346,526.29 and Y = 205,179.61; South 80 degrees 14 minutes 33 seconds East 126.39 feet to a point having Coordinates of X = 2,346,650.86 and Y = 205,158.18; South 73 degrees 04 minutes 27 seconds East 129.56 feet to a point having Coordinates of X = 2,346,774.80 and Y = 205,120.47; South 66 degrees 30 minutes 30 seconds East 143.30 feet to a point having Coordinates of X = 2,346,906.23 and Y = 205,063.34; South 66 degrees 12 minutes 06 seconds East 151.67 feet to a point having Coordinates of X = 2,347,045.00 and Y = 205,002.14; South 61 degrees 03 minutes 33 seconds East 115.00 feet to a point having Coordinates of X = 2,347,145.64 and Y = 204,946.49; South 60 degrees 40 minutes 05 seconds East 198.99 feet to a point having Coordinates of X = 2,347,319.12 and Y = 204,849.01; North 19 degrees 43 minutes 17 seconds East 485.65 feet to a point having Coordinates of X = 2,347,483.00 and Y = 205,306.18; North 20 degrees 58 minutes 34 seconds East 395.08 feet to a point having Coordinates of X = 2,347,624.43 and Y = 205,675.08; North 22 degrees 03 minutes 04 seconds East 286.34 feet to a point having Coordinates of X = 2,347,731.93 and Y = 205,940.47; North 52 degrees 35 minutes 23 seconds West 542.80 feet to a point having Coordinates of X = 2,347,300.76 and Y = 206,270.22; North 51 degrees 42 minutes 45 seconds West 404.29 feet to a point having Coordinates of X = 2,346,983.43 and Y = 206,520.72; North 50 degrees 29 minutes 38 seconds West 617.31 feet to a point having Coordinates of X = 2,346,507.14 and Y = 206,913.43; North 51 degrees 57 minutes 42 seconds West 274.90 feet to a point having Coordinates of X = 2,346,290.63 and Y = 207,082.82; North 57 degrees 12 minutes 57 seconds West 299.79 feet to a point having Coordinates of X = 2,346,038.59 and Y = 207,245.15; North 58 degrees 43 minutes 41 seconds West 509.13 feet to a point having Coordinates of X = 2,345,603.43 and Y = 207,509.44; North 62 degrees 40 minutes 41 seconds West 536.22 feet to a point having Coordinates of X = 2,345,127.03 and Y = 207,755.56; South 37 degrees 02 minutes 01 seconds West 240.97 feet to a point having Coordinates of X = 2,344,981.90 and Y = 207,563.20 and South 35 degrees 44 minutes 07 seconds West 54.62 feet to a point having Coordinates of X = 2,344,950.00 and Y = 207,518.86; thence North 4,431.14

feet to a point having Coordinates of X = 2,344,950.00 and Y = 211,950.00; thence East 6,750.00 feet to a point on the West line of State Lease No. 16708 having Coordinates of X = 2,351,700.00 and Y = 211,950.00; thence South 3,150.00 feet along the West line of said State Lease No. 16708 to its Southwest corner having Coordinates of X = 2,351,700.00 and Y = 208,800.00; thence East 6,800.00 feet along the South line of said State Lease No. 16708 to a point having Coordinates of X = 2,358,500.00 and Y = 208,800.00; thence South 7,325.00 feet to a point having Coordinates of X = 2,358,500.00 and Y = 201,475.00; thence West 13,550.00 feet to the point of beginning, containing approximately **500 acres**, all as more particularly outlined on a plat on file in the Office of Mineral Resources, Department of Natural Resources, as provided by the applicant. All bearings, distances and coordinates are based on Louisiana Coordinate System of 1927, (North or South Zone), where applicable.

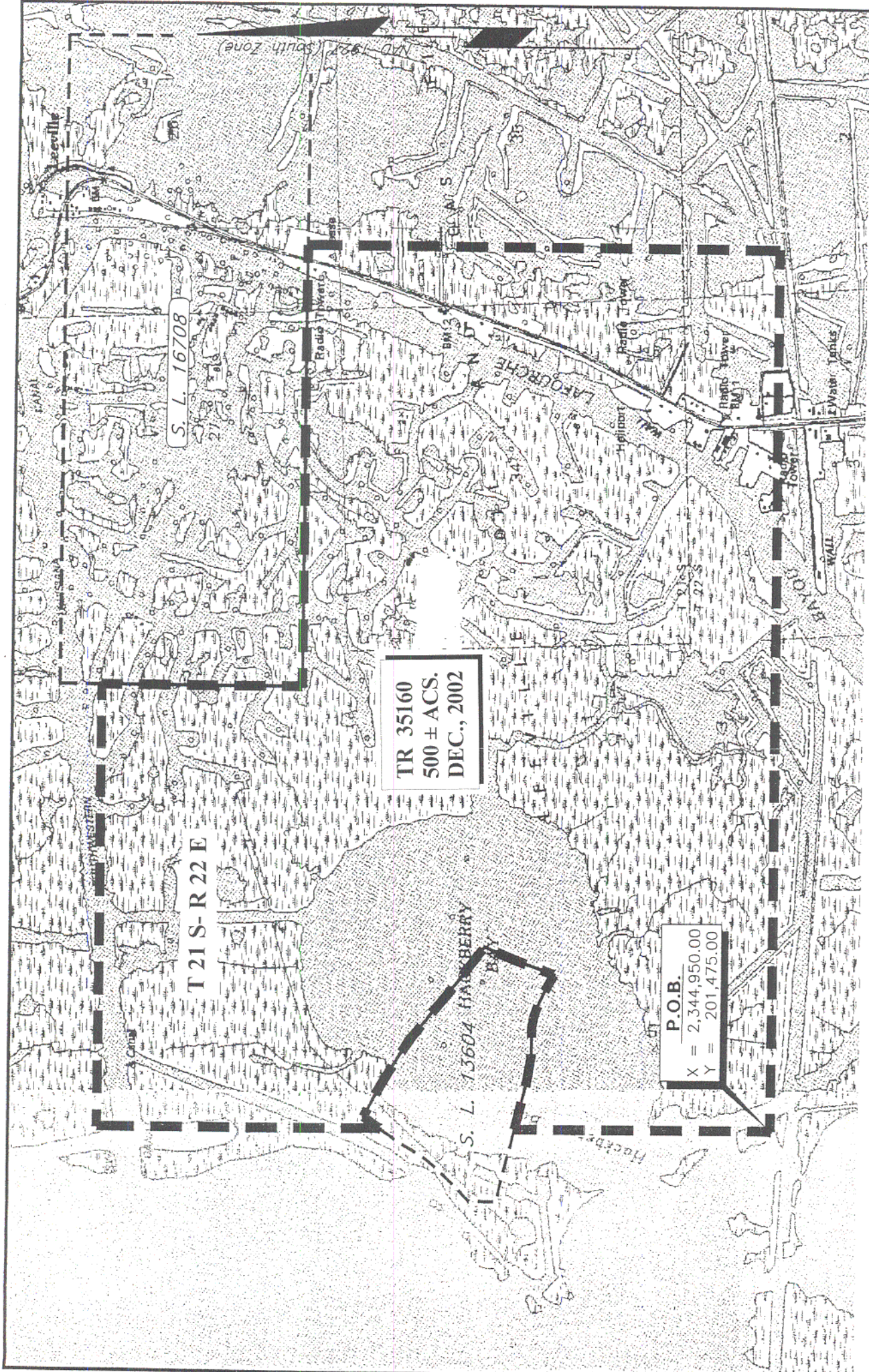
NOTE: The above description of the Tract nominated for lease has been provided and corrected, where required, exclusively by the nomination party. Any mineral lease selected from this Tract and awarded by the Louisiana State Mineral Board shall be without warranty of any kind, either express, implied, or statutory, including, but not limited to, the implied warranties of merchantability and fitness for a particular purpose. Should the mineral lease awarded by the Louisiana State Mineral Board be subsequently modified, cancelled or abrogated due to the existence of conflicting leases, operating agreements, private claims or other future obligations or conditions which may affect all or any portion of the leased Tract, it shall not relieve the Lessee of the obligation to pay any bonus due thereon to the Louisiana State Mineral Board, nor shall the Louisiana State Mineral Board be obligated to refund any consideration paid by the Lessor prior to such modification, cancellation, or abrogation, including, but not limited to, bonuses, rentals and royalties.

NOTE: The Department of Wildlife and Fisheries has designated certain areas in the coastal waters of the State of Louisiana as Oyster Seed Bed Areas. The exact location of those Seed Bed Areas must be obtained from the Department of Wildlife and Fisheries and any work done under a mineral lease from the State of Louisiana may necessarily be conducted in conformity with the rules and regulations promulgated by the said Department of Wildlife and Fisheries for Oyster Seed Bed Areas.

NOTE: The State of Louisiana does hereby reserve, and this lease shall be subject to, the imprescriptible right of surface use in the nature of a servitude in favor of the Department of Natural Resources, including its Offices and Commissions, for the sole purpose of implementing, constructing, servicing and maintaining approved coastal zone management and/or restoration projects. Utilization of any and all rights derived under this lease by the mineral lessee, its agents, successors or assigns, shall not interfere with nor hinder the reasonable surface use by the Department of Natural Resources, its Offices or Commissions, as herein above reserved.

Applicant: Genesis Resources Corporation

| Bidder | Cash Payment | Price / Acre | Rental | Oil | Gas | Other |
|--------|--------------|--------------|--------|-----|-----|-------|
| | | | | | | |
| | | | | | | |
| | | | | | | |
| | | | | | | |



TR 35160
 500 ± ACS.
 DEC., 2002

S. L. 16708

T 21 S- R 22 E

P.O.B.
 X = 2,344,950.00
 Y = 201,475.00

S. L. 13604 HACKBERRY Bay

TRACT 35161 - Lafourche Parish, Louisiana

All of the lands now or formerly constituting the beds and bottoms of all water bodies of every nature and description, and all islands and other lands formed by accretion, where allowed by law, or by reliction, and excepting tax adjudicated lands, belonging to the State of Louisiana and not presently under mineral lease on December 11, 2002, situated in Lafourche Parish, Louisiana, and more particularly described as follows: Beginning at a point having Coordinates of X = 2,344,950.00 and Y = 201,475.00; thence South 10,475.00 feet to a point having Coordinates of X = 2,344,950.00 and Y = 191,000.00; thence West 13,250.00 feet to a point having Coordinates of X = 2,331,700.00 and Y = 191,000.00; thence North 10,475.00 feet to a point having Coordinates of X = 2,331,700.00 and Y = 201,475.00; thence East 13,250.00 feet to the point of beginning, containing approximately **2,361 acres**, all as more particularly outlined on a plat on file in the Office of Mineral Resources, Department of Natural Resources, as provided by the applicant. All bearings, distances and coordinates are based on Louisiana Coordinate System of 1927, (North or South Zone), where applicable.

NOTE: The above description of the Tract nominated for lease has been provided and corrected, where required, exclusively by the nomination party. Any mineral lease selected from this Tract and awarded by the Louisiana State Mineral Board shall be without warranty of any kind, either express, implied, or statutory, including, but not limited to, the implied warranties of merchantability and fitness for a particular purpose. Should the mineral lease awarded by the Louisiana State Mineral Board be subsequently modified, cancelled or abrogated due to the existence of conflicting leases, operating agreements, private claims or other future obligations or conditions which may affect all or any portion of the leased Tract, it shall not relieve the Lessee of the obligation to pay any bonus due thereon to the Louisiana State Mineral Board, nor shall the Louisiana State Mineral Board be obligated to refund any consideration paid by the Lessor prior to such modification, cancellation, or abrogation, including, but not limited to, bonuses, rentals and royalties.

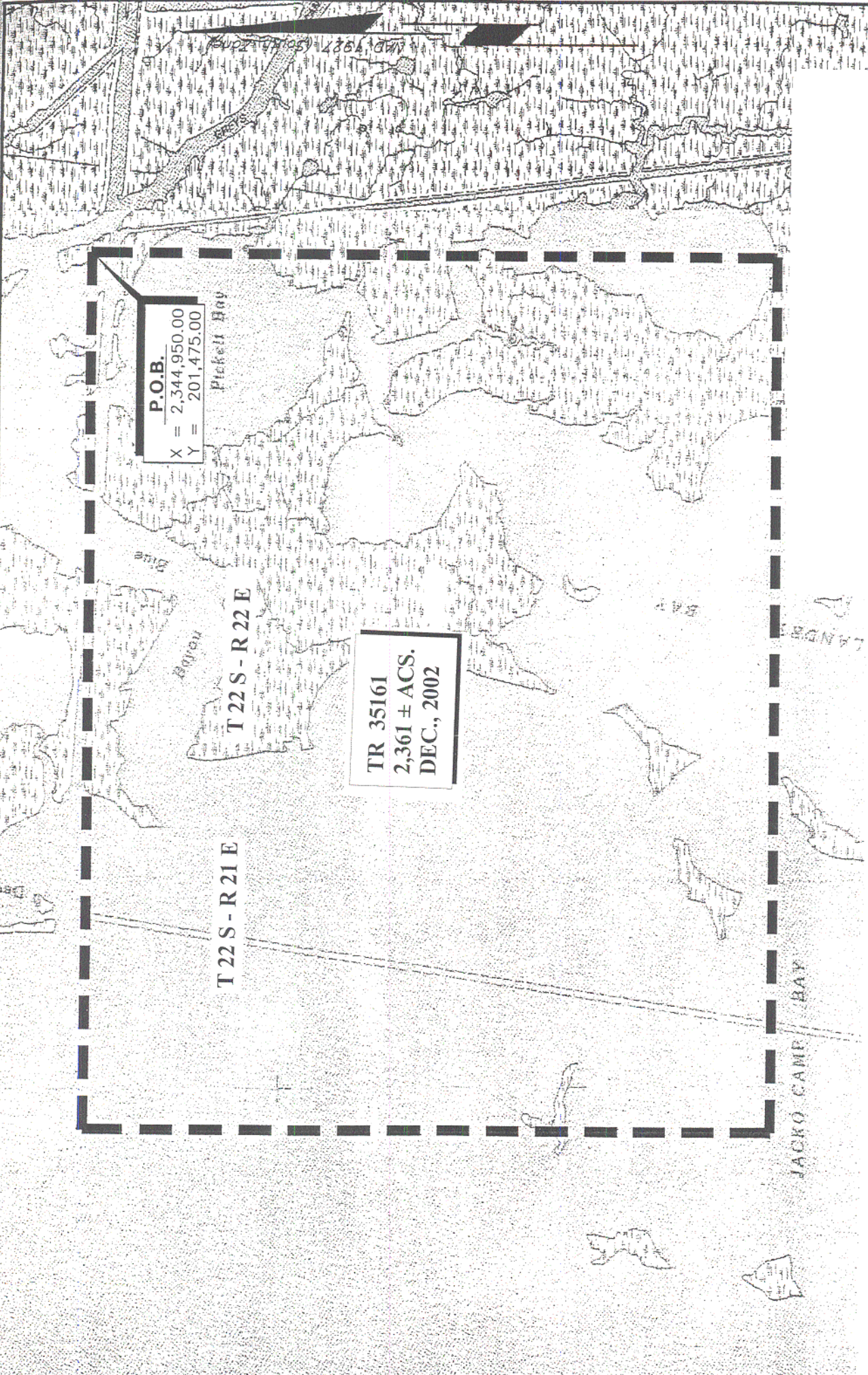
NOTE: The Department of Wildlife and Fisheries has designated certain areas in the coastal waters of the State of Louisiana as Oyster Seed Bed Areas. The exact location of those Seed Bed Areas must be obtained from the Department of Wildlife and Fisheries and any work done under a mineral lease from the State of Louisiana may necessarily be conducted in conformity with the rules and regulations promulgated by the said Department of Wildlife and Fisheries for Oyster Seed Bed Areas.

NOTE: The State of Louisiana does hereby reserve, and this lease shall be subject to, the imprescriptible right of surface use in the nature of a servitude in favor of the Department of Natural Resources, including its Offices and Commissions, for the sole purpose of implementing, constructing, servicing and maintaining approved coastal zone management and/or restoration projects. Utilization of any and all rights derived under this lease by the mineral lessee, its agents, successors or assigns,

shall not interfere with nor hinder the reasonable surface use by the Department of Natural Resources, its Offices or Commissions, as herein above reserved.

Applicant: Genesis Resources Corporation

| Bidder | Cash Payment | Price / Acre | Rental | Oil | Gas | Other |
|--------|--------------|--------------|--------|-----|-----|-------|
| | | | | | | |
| | | | | | | |
| | | | | | | |
| | | | | | | |



TRACT 35162 - Lafourche Parish, Louisiana

All of the lands now or formerly constituting the beds and bottoms of all water bodies of every nature and description, and all islands and other lands formed by accretion, where allowed by law, or by reliction, and excepting tax adjudicated lands, belonging to the State of Louisiana and not presently under mineral lease on December 11, 2002, situated in Lafourche Parish, Louisiana, and more particularly described as follows: Beginning at a point having Coordinates of X = 2,344,950.00 and Y = 201,475.00; thence East 13,550.00 feet to a point having Coordinates of X = 2,358,500.00 and Y = 201,475.00; thence South 10,475.00 feet to a point having Coordinates of X = 2,358,500.00 and Y = 191,000.00; thence West 13,550.00 feet to a point having Coordinates of X = 2,344,950.00 and Y = 191,000.00; thence North 10,475.00 feet to the point of beginning, containing approximately **371 acres**, all as more particularly outlined on a plat on file in the Office of Mineral Resources, Department of Natural Resources, as provided by the applicant. All bearings, distances and coordinates are based on Louisiana Coordinate System of 1927, (North or South Zone), where applicable.

NOTE: The above description of the Tract nominated for lease has been provided and corrected, where required, exclusively by the nomination party. Any mineral lease selected from this Tract and awarded by the Louisiana State Mineral Board shall be without warranty of any kind, either express, implied, or statutory, including, but not limited to, the implied warranties of merchantability and fitness for a particular purpose. Should the mineral lease awarded by the Louisiana State Mineral Board be subsequently modified, cancelled or abrogated due to the existence of conflicting leases, operating agreements, private claims or other future obligations or conditions which may affect all or any portion of the leased Tract, it shall not relieve the Lessee of the obligation to pay any bonus due thereon to the Louisiana State Mineral Board, nor shall the Louisiana State Mineral Board be obligated to refund any consideration paid by the Lessor prior to such modification, cancellation, or abrogation, including, but not limited to, bonuses, rentals and royalties.

NOTE: The Department of Wildlife and Fisheries has designated certain areas in the coastal waters of the State of Louisiana as Oyster Seed Bed Areas. The exact location of those Seed Bed Areas must be obtained from the Department of Wildlife and Fisheries and any work done under a mineral lease from the State of Louisiana may necessarily be conducted in conformity with the rules and regulations promulgated by the said Department of Wildlife and Fisheries for Oyster Seed Bed Areas.

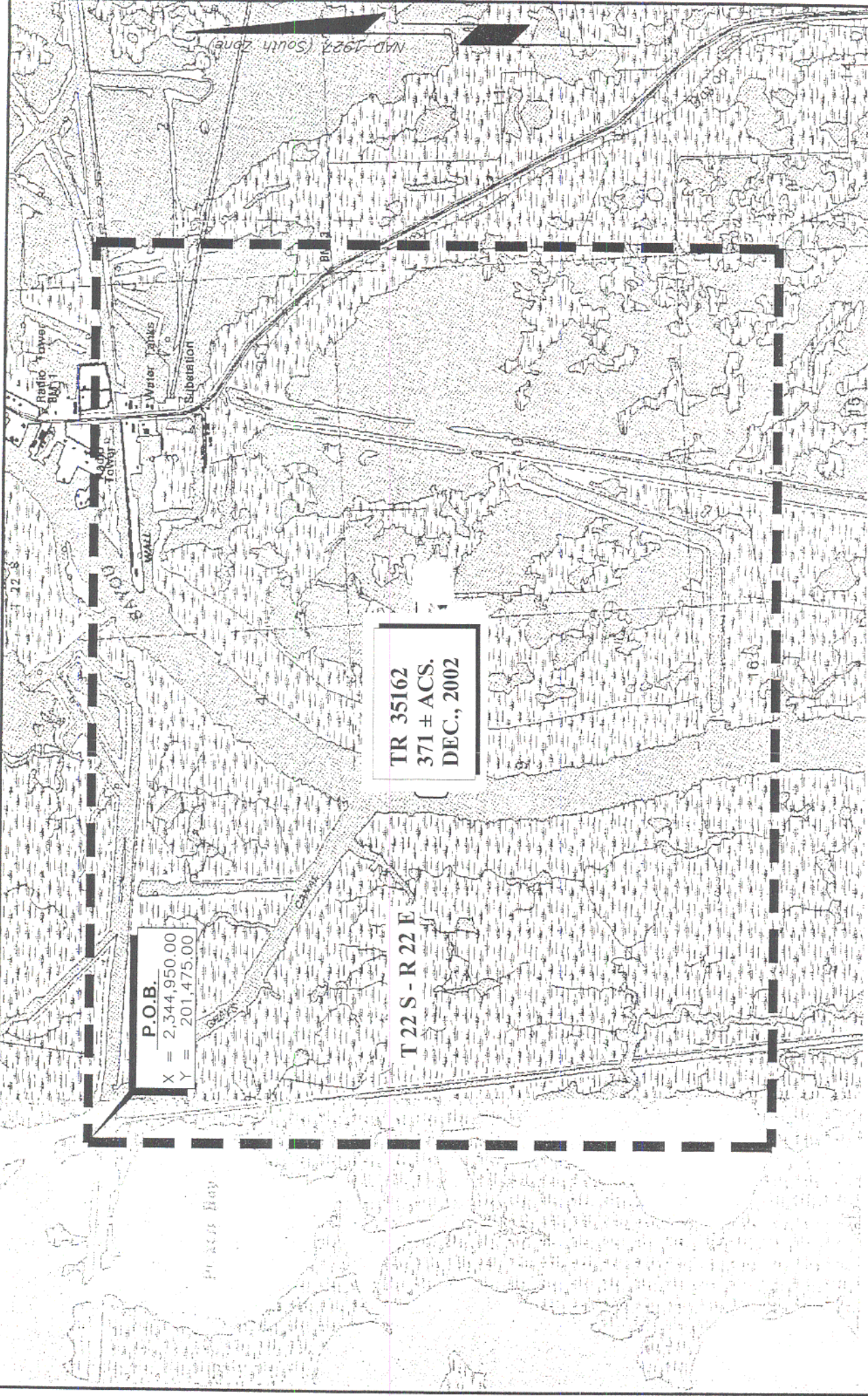
NOTE: The State of Louisiana does hereby reserve, and this lease shall be subject to, the imprescriptible right of surface use in the nature of a servitude in favor of the Department of Natural Resources, including its Offices and Commissions, for the sole purpose of implementing, constructing, servicing and maintaining approved coastal zone management and/or restoration projects. Utilization of any and all rights derived under this lease by the mineral lessee, its agents, successors or assigns,

shall not interfere with nor hinder the reasonable surface use by the Department of Natural Resources, its Offices or Commissions, as herein above reserved.

Applicant: Genesis Resources Corporation

| Bidder | Cash Payment | Price / Acre | Rental | Oil | Gas | Other |
|--------|--------------|--------------|--------|-----|-----|-------|
| | | | | | | |
| | | | | | | |
| | | | | | | |
| | | | | | | |

MAP 1922 (South zone)



P.O.B.
 X = 2,344,950.00
 Y = 201,475.00

TR 35162
 371 ± ACS.
 DEC., 2002

T 22 S - R 22 E

POUSSIN Bay

161

228

TRACT 35163 - Portion of Block 35, Breton Sound Area, Plaquemines Parish, Louisiana

All of the lands now or formerly constituting the beds and bottoms of all water bodies of every nature and description, and all islands and other lands formed by accretion, where allowed by law, or by reliction, and excepting tax adjudicated lands, belonging to the State of Louisiana and not presently under mineral lease on December 11, 2002, situated in Plaquemines Parish, Louisiana, and more particularly described as follows: Beginning at the Southeast corner of Block 35, Breton Sound Area, having Coordinates of X = 2,679,600.00 and Y = 307,580.00; thence West 14,750.00 feet along the South line of said Block 35 to its Southwest corner having Coordinates of X = 2,664,850.00 and Y = 307,580.00; thence North 4,875.00 feet along the West line of said Block 35 to a point, also being the Southwest corner of State Lease No. 14561 having Coordinates of X = 2,664,850.00 and Y = 312,455.00; thence along the boundary of said State Lease No. 14561 the following courses: East 3,999.40 feet, North 2,500.00 feet and East 3,250.60 feet to the most Easterly Southeast corner of said State Lease No. 14561 having Coordinates of X = 2,672,100.00 and Y = 314,955.00; thence East 7,500.00 feet to a point on the East line of said Block 35 having Coordinates of X = 2,679,600.00 and Y = 314,955.00; thence South 7,375.00 feet along the East line of said Block 35 to the point of beginning, containing approximately **2,267.74 acres**, all as more particularly outlined on a plat on file in the Office of Mineral Resources, Department of Natural Resources, as provided by the applicant. All bearings, distances and coordinates are based on Louisiana Coordinate System of 1927, (North or South Zone), where applicable.

NOTE: The above description of the Tract nominated for lease has been provided and corrected, where required, exclusively by the nomination party. Any mineral lease selected from this Tract and awarded by the Louisiana State Mineral Board shall be without warranty of any kind, either express, implied, or statutory, including, but not limited to, the implied warranties of merchantability and fitness for a particular purpose. Should the mineral lease awarded by the Louisiana State Mineral Board be subsequently modified, cancelled or abrogated due to the existence of conflicting leases, operating agreements, private claims or other future obligations or conditions which may affect all or any portion of the leased Tract, it shall not relieve the Lessee of the obligation to pay any bonus due thereon to the Louisiana State Mineral Board, nor shall the Louisiana State Mineral Board be obligated to refund any consideration paid by the Lessor prior to such modification, cancellation, or abrogation, including, but not limited to, bonuses, rentals and royalties.

NOTE: The State of Louisiana does hereby reserve, and this lease shall be subject to, the imprescriptible right of surface use in the nature of a servitude in favor of the Department of Natural Resources, including its Offices and Commissions, for the sole purpose of implementing, constructing, servicing and maintaining approved coastal zone management and/or restoration projects. Utilization of any and all rights derived under this lease by the mineral lessee, its agents, successors or assigns,

shall not interfere with nor hinder the reasonable surface use by the Department of Natural Resources, its Offices or Commissions, as herein above reserved.

Applicant: Mandy L. Trahan

| Bidder | Cash Payment | Price / Acre | Rental | Oil | Gas | Other |
|--------|--------------|--------------|--------|-----|-----|-------|
| | | | | | | |
| | | | | | | |
| | | | | | | |
| | | | | | | |

SL 17483

251

SL 1230,
As Amended

SL 14561

BIK. 34

BIK. 35

BIK. 36

TR 35163
2,267.74 ± ACS.
DEC., 2002

P. O. B.
X=2,679,600.00
Y= 307,580.00

SL 1237

BIK. 47

BIK. 46

BIK. 45

SL 2001

BRETON SOUND AREA
GULF OF MEXICO

NAD 27 LAMBERT LA. SOUTH ZONE

Plaquemines Parish, Louisiana

3000' 0' 3000'

TRACT 35164 - Portion of Block 46, Breton Sound Area, Plaquemines Parish, Louisiana

All of the lands now or formerly constituting the beds and bottoms of all water bodies of every nature and description, and all islands and other lands formed by accretion, where allowed by law, or by reliction, and excepting tax adjudicated lands, belonging to the State of Louisiana and not presently under mineral lease on December 11, 2002, situated in Plaquemines Parish, Louisiana, and more particularly described as follows: Beginning at the Northeast corner of Block 46, Breton Sound Area, having Coordinates of X = 2,679,600.00 and Y = 307,580.00; thence South 53 degrees 58 minutes 08 seconds West 5,805.62 feet to the North corner of State Lease No. 16893 having Coordinates of X = 2,674,905.00 and Y = 304,165.00; thence South 40 degrees 31 minutes 58 seconds West 4,123.82 feet along the boundary of said State Lease No. 16893 to its Northwest corner, also being the Northeast corner of State Lease No. 16891 having Coordinates of X = 2,672,225.00 and Y = 301,030.76; thence South 40 degrees 31 minutes 59 seconds West 869.38 feet along the North line of said State Lease No. 16891 to its Northwest corner having Coordinates of X = 2,671,660.00 and Y = 300,370.00; thence South 01 degrees 21 minutes 21 seconds West 1,409.84 feet along the West line of said State Lease No. 16891 to a point, also being the Northeast corner of State Lease No. 17484 having Coordinates of X = 2,671,626.64 and Y = 298,960.55; thence South 74 degrees 22 minutes 04 seconds West 5,012.03 feet along the North line of said State Lease No. 17484 to its Northwest corner having Coordinates of X = 2,666,800.00 and Y = 297,610.00; thence South 02 degrees 00 minutes 12 seconds East 1,458.89 feet along the West line of said State Lease No. 17484 to its Southwest corner, also being a point on the North line of State Lease No. 17297 having Coordinates of X = 2,666,851.00 and Y = 296,152.00; thence West 2,001.00 feet along the North line of said State Lease No. 17297 to its Northwest corner, also being a point on the West line of said Block 46 having Coordinates of X = 2,664,850.00 and Y = 296,152.00; thence North 11,428.00 feet along the West line of said Block 46 to its Northwest corner having Coordinates of X = 2,664,850.00 and Y = 307,580.00; thence East 14,750.00 feet along the North line of said Block 46 to the point of beginning, containing approximately **2,128.19 acres**, all as more particularly outlined on a plat on file in the Office of Mineral Resources, Department of Natural Resources, as provided by the applicant. All bearings, distances and coordinates are based on Louisiana Coordinate System of 1927, (North or South Zone), where applicable.

NOTE: The above description of the Tract nominated for lease has been provided and corrected, where required, exclusively by the nomination party. Any mineral lease selected from this Tract and awarded by the Louisiana State Mineral Board shall be without warranty of any kind, either express, implied, or statutory, including, but not limited to, the implied warranties of merchantability and fitness for a particular purpose. Should the mineral lease awarded by the Louisiana State Mineral Board be subsequently modified, cancelled or abrogated due to the existence of conflicting leases, operating agreements, private claims or other future obligations or conditions which may affect all or any portion

of the leased Tract, it shall not relieve the Lessee of the obligation to pay any bonus due thereon to the Louisiana State Mineral Board, not shall the Louisiana State Mineral Board be obligated to refund any consideration paid by the Lessor prior to such modification, cancellation, or abrogation, including, but not limited to, bonuses, rentals and royalties.

NOTE: The State of Louisiana does hereby reserve, and this lease shall be subject to, the imprescriptible right of surface use in the nature of a servitude in favor of the Department of Natural Resources, including its Offices and Commissions, for the sole purpose of implementing, constructing, servicing and maintaining approved coastal zone management and/or restoration projects. Utilization of any and all rights derived under this lease by the mineral lessee, its agents, successors or assigns, shall not interfere with nor hinder the reasonable surface use by the Department of Natural Resources, its Offices or Commissions, as herein above reserved.

Applicant: Mandy L. Trahan

| Bidder | Cash Payment | Price / Acre | Rental | Oil | Gas | Other |
|--------|--------------|--------------|--------|-----|-----|-------|
| | | | | | | |
| | | | | | | |
| | | | | | | |
| | | | | | | |

BIK. 34

BIK. 35

254
BIK./36

P. O. B.
X=2,679,600.00
Y= 307,580.00

TR 35164
2,128.19 ± ACS.
DEC., 2002

SL 1237

SL 2001

BIK. 47

BIK. 46

BIK. 45

SL 16893

SL 16569

SL 17484

SL 16891

SL 17485

SL 17297

SL 16892

SL 17488

BIK. 51

BRETON SOUND AREA

BIK. 52

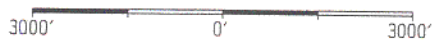
BIK. 50

SL 16887

GULF OF MEXICO

NAD 27 - LAMBERT LA. SOUTH ZONE

Plaquemines Parish, Louisiana



TRACT 35165 - Portion of Block 46, Breton Sound Area, Plaquemines Parish, Louisiana

All of the lands now or formerly constituting the beds and bottoms of all water bodies of every nature and description, and all islands and other lands formed by accretion, where allowed by law, or by reliction, and excepting tax adjudicated lands, belonging to the State of Louisiana and not presently under mineral lease on December 11, 2002, situated in Plaquemines Parish, Louisiana, and more particularly described as follows: Beginning at the Northeast corner of Block 46, Breton Sound Area, having Coordinates of X = 2,679,600.00 and Y = 307,580.00; thence South 14,750.00 feet along the East line of said Block 46 to its Southeast corner having Coordinates of X = 2,679,600.00 and Y = 292,830.00; thence West 8,926.00 feet along the South line of said Block 46 to a point, also being the Southeast corner of State Lease No. 17297 having Coordinates of X = 2,670,674.00 and Y = 292,830.00; thence along the boundary of said State Lease No. 17297 the following courses: North 1,170.00 feet and North 58 degrees 34 minutes 28 seconds West 2,282.36 feet to a point on the boundary of said State Lease No. 17297, also being the most Southerly Southwest corner of State Lease No. 17484 having Coordinates of X = 2,668,726.43 and Y = 295,190.00; thence along the boundary of said State Lease No. 17484 the following courses: East 2,813.57 feet and North 110.00 feet to a point on the East line of said State Lease No. 17484, also being the Southwest corner of State Lease No. 16891 having Coordinates of X = 2,671,540.00 and Y = 295,300.00; thence North 60 degrees 21 minutes 06 seconds East 788.19 feet along the South line of said State Lease No. 16891 to its Southeast corner, also being the Southwest corner of State Lease No. 16893 having Coordinates of X = 2,672,225.00 and Y = 295,689.90; thence North 60 degrees 21 minutes 04 seconds East 2,000.73 feet to a point on the Southeasterly boundary line of said State Lease No. 16893, also being the most Westerly Southwest corner of State Lease No. 17485 having Coordinates of X = 2,673,963.78 and Y = 296,679.63; thence along the boundary of said State Lease No. 17485 the following courses: South 29 degrees 38 minutes 55 seconds East 1,104.19 feet, East 1,950.00 feet, South 510.00 feet, East 2,820.00 feet, North 2,350.00 feet, West 2,190.00 feet and North 29 degrees 48 minutes 52 seconds West 2,117.47 feet to the most Northerly Northwest corner of said State Lease No. 17485, also being a point on the Southeasterly boundary line of said State Lease No. 16893 having Coordinates of X = 2,676,037.21 and Y = 299,397.20; thence along the boundary of said State Lease No. 16893 the following courses: North 33 degrees 14 minutes 29 seconds East 2,203.33 feet and North 38 degrees 39 minutes 35 seconds West 3,745.83 feet to the North corner of said State Lease No. 16893 having Coordinates of X = 2,674,905.00 and Y = 304,165.00; thence North 53 degrees 58 minutes 08 seconds East 5,805.62 feet to the point of beginning, containing approximately **1,276 acres**, all as more particularly outlined on a plat on file in the Office of Mineral Resources, Department of Natural Resources, as provided by the applicant. All bearings, distances and coordinates are based on Louisiana Coordinate System of 1927, (North or South Zone), where applicable.

NOTE: The above description of the Tract nominated for lease has been provided and corrected, where required, exclusively by the nomination party. Any mineral lease selected from this Tract and awarded by the Louisiana State Mineral Board shall be without warranty of any kind, either express, implied, or statutory, including, but not limited to, the implied warranties of merchantability and fitness for a particular purpose. Should the mineral lease awarded by the Louisiana State Mineral Board be subsequently modified, cancelled or abrogated due to the existence of conflicting leases, operating agreements, private claims or other future obligations or conditions which may affect all or any portion of the leased Tract, it shall not relieve the Lessee of the obligation to pay any bonus due thereon to the Louisiana State Mineral Board, nor shall the Louisiana State Mineral Board be obligated to refund any consideration paid by the Lessor prior to such modification, cancellation, or abrogation, including, but not limited to, bonuses, rentals and royalties.

NOTE: The State of Louisiana does hereby reserve, and this lease shall be subject to, the imprescriptible right of surface use in the nature of a servitude in favor of the Department of Natural Resources, including its Offices and Commissions, for the sole purpose of implementing, constructing, servicing and maintaining approved coastal zone management and/or restoration projects. Utilization of any and all rights derived under this lease by the mineral lessee, its agents, successors or assigns, shall not interfere with nor hinder the reasonable surface use by the Department of Natural Resources, its Offices or Commissions, as herein above reserved.

Applicant: Mandy L. Trahan

| Bidder | Cash Payment | Price / Acre | Rental | Oil | Gas | Other |
|--------|--------------|--------------|--------|-----|-----|-------|
| | | | | | | |
| | | | | | | |
| | | | | | | |
| | | | | | | |

BIK. 34

BIK. 35

²⁵⁷
BIK./36

P. O. B.
X=2,679,600.00
Y= 307,580.00

SL 1237

SL 2001

BIK. 47

BIK. 46

BIK. 45

SL 16569

SL 16893

SL 17484

SL 16891

SL 17485

SL 17297

TR 35165
1,276 ± ACS.
DEC., 2002

SL 16892

SL 17488

BIK. 51

BIK. 52

BIK. 50

SL 16887

BRETON SOUND AREA

GULF OF MEXICO

NAD 27
LAMBERT LA. SOUTH ZONE

Plaquemines Parish, Louisiana

3000' 0' 3000'

TRACT 35166 - Portion of Block 51, Breton Sound Area, Plaquemines Parish, Louisiana

All of the lands now or formerly constituting the beds and bottoms of all water bodies of every nature and description, and all islands and other lands formed by accretion, where allowed by law, or by reliction, and excepting tax adjudicated lands, belonging to the State of Louisiana and not presently under mineral lease on December 11, 2002, situated in Plaquemines Parish, Louisiana, and more particularly described as follows: Beginning at a point on the West line of Block 51, Breton Sound Area, also being the North corner of State Lease No. 17298 having Coordinates of X = 2,664,850.00 and Y = 280,380.00; thence North 11,770.00 feet along the West line of said Block 51 to a point, also being the Southwest corner of State Lease No. 17488 having Coordinates of X = 2,664,850.00 and Y = 292,150.00; thence East 1,538.23 feet along the South line of said State Lease No. 17488 to its Southeast corner, also being a point on the West line of State Lease No. 16887 having Coordinates of X = 2,666,388.23 and Y = 292,150.00; thence South 15 degrees 35 minutes 13 seconds East 4,173.49 feet along the West line of State Lease No. 16887 to its Southwest corner, also being the Northwest corner of State Lease No. 16889 having Coordinates of X = 2,667,509.66 and Y = 288,130.00; thence along the boundary of said State Lease No. 16889 the following courses: South 15 degrees 35 minutes 15 seconds East 1,266.58 feet and North 78 degrees 41 minutes 24 seconds East 1,886.64 feet to the Southeast corner of said State Lease No. 16889, also being the Southwest corner of State Lease No. 17489 having Coordinates of X = 2,669,700.00 and Y = 287,280.00; thence North 79 degrees 41 minutes 43 seconds East 894.43 feet along the South line of said State Lease No. 17489 to a point, also being the most Westerly Northwest corner of State Lease No. 16890 having Coordinates of X = 2,670,580.00 and Y = 287,440.00; thence South 05 degrees 15 minutes 21 seconds East 1,993.38 feet along the West line of said State Lease No. 16890 to a point, also being the most Easterly Northwest corner of State Lease No. 17245 having Coordinates of X = 2,670,762.60 and Y = 285,455.00; thence along the boundary of said State Lease No. 17245 the following courses: West 1,776.60 feet, South 2,250.00 feet, West 1,169.00 feet, South 1,903.00 feet, East 3,425.00 feet, North 1,876.00 feet and East 2,175.00 feet to the most Easterly Southeast corner of State Lease No. 17245 having Coordinates of X = 2,673,417.00 and Y = 283,178.00; thence South 40 degrees 55 minutes 27 seconds East 4,964.42 feet to the Northwest corner of State Lease No. 17244 having Coordinates of X = 2,676,669.00 and Y = 279,427.00; thence South 1,347.00 feet along the West line of said State Lease No. 17244 to its Southwest corner, also being a point on the South line of said Block 51 having Coordinates of X = 2,676,669.00 and Y = 278,080.00; thence West 4,969.00 feet along the South line of said Block 51 to a point, also being the Southeast corner of State Lease No. 17298 having Coordinates of X = 2,671,700.00 and Y = 278,080.00; thence North 71 degrees 26 minutes 23 seconds West 7,225.82 feet along the North line of said State Lease No. 17298 to the point of beginning, containing approximately **1,615.80 acres**, all as more particularly outlined on a plat on file in the Office of Mineral Resources, Department of Natural Resources, as provided by the applicant. All bearings, distances and

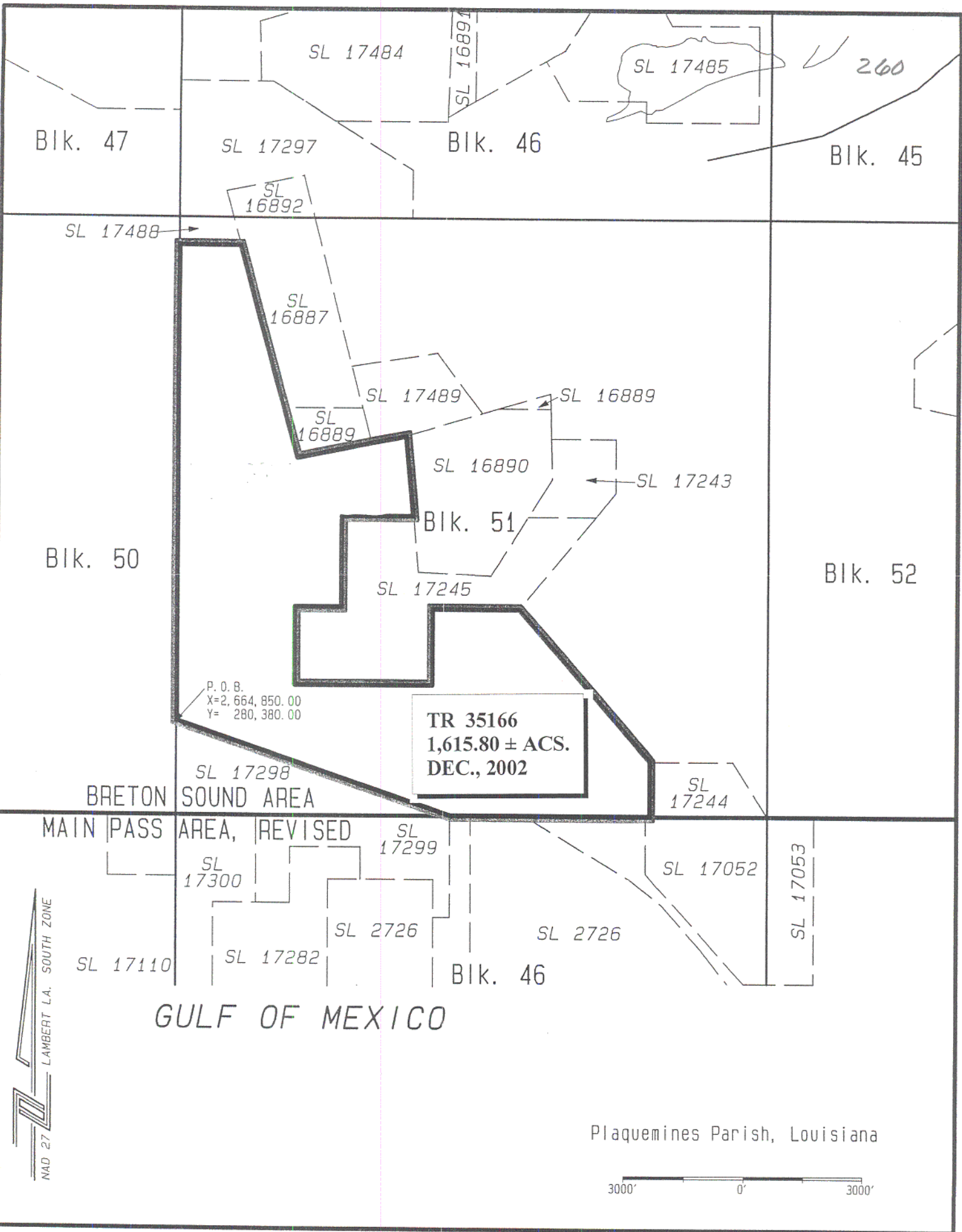
coordinates are based on Louisiana Coordinate System of 1927, (North or South Zone), where applicable.

NOTE: The above description of the Tract nominated for lease has been provided and corrected, where required, exclusively by the nomination party. Any mineral lease selected from this Tract and awarded by the Louisiana State Mineral Board shall be without warranty of any kind, either express, implied, or statutory, including, but not limited to, the implied warranties of merchantability and fitness for a particular purpose. Should the mineral lease awarded by the Louisiana State Mineral Board be subsequently modified, cancelled or abrogated due to the existence of conflicting leases, operating agreements, private claims or other future obligations or conditions which may affect all or any portion of the leased Tract, it shall not relieve the Lessee of the obligation to pay any bonus due thereon to the Louisiana State Mineral Board, nor shall the Louisiana State Mineral Board be obligated to refund any consideration paid by the Lessor prior to such modification, cancellation, or abrogation, including, but not limited to, bonuses, rentals and royalties.

NOTE: The State of Louisiana does hereby reserve, and this lease shall be subject to, the imprescriptible right of surface use in the nature of a servitude in favor of the Department of Natural Resources, including its Offices and Commissions, for the sole purpose of implementing, constructing, servicing and maintaining approved coastal zone management and/or restoration projects. Utilization of any and all rights derived under this lease by the mineral lessee, its agents, successors or assigns, shall not interfere with nor hinder the reasonable surface use by the Department of Natural Resources, its Offices or Commissions, as herein above reserved.

Applicant: Mandy L. Trahan

| Bidder | Cash Payment | Price / Acre | Rental | Oil | Gas | Other |
|--------|--------------|--------------|--------|-----|-----|-------|
| | | | | | | |
| | | | | | | |
| | | | | | | |
| | | | | | | |



TRACT 35167 - Portion of Block 51, Breton Sound Area, Plaquemines Parish, Louisiana

All of the lands now or formerly constituting the beds and bottoms of all water bodies of every nature and description, and all islands and other lands formed by accretion, where allowed by law, or by reliction, and excepting tax adjudicated lands, belonging to the State of Louisiana and not presently under mineral lease on December 11, 2002, situated in Plaquemines Parish, Louisiana, and more particularly described as follows: Beginning at the Northeast corner of Block 51, Breton Sound Area, having Coordinates of X = 2,679,600.00 and Y = 292,830.00; thence South 14,750.00 feet along the East line of said Block 51 to its Southeast corner, also being the Southeast corner of State Lease No. 17244 having Coordinates of X = 2,679,600.00 and Y = 278,080.00; thence along the boundary of said State Lease No. 17244 the following courses: North 33 degrees 05 minutes 49 seconds West 1,607.88 feet and West 2,053.00 feet to the Northwest corner of said State Lease No. 17244 having Coordinates of X = 2,676,669.00 and Y = 279,427.00; thence North 40 degrees 55 minutes 27 seconds West 4,964.42 feet to the most Easterly Southeast corner of State Lease No. 17245 having Coordinates of X = 2,673,417.00 and Y = 283,178.00; thence North 39 degrees 23 minutes 04 seconds East 2,946.03 feet along the East line of said State Lease No. 17245 to its Northeast corner, also being the Southeast corner of State Lease No. 17243 having Coordinates of X = 2,675,286.32 and Y = 285,455.00; thence along the boundary of said State Lease No. 17243 the following courses: North 39 degrees 23 minutes 05 seconds East 782.76 feet, North 1,332.00 feet, West 1,601.14 feet to the Northwest corner of said State Lease No. 17243, also being a point on the East line of State Lease No. 16890 having Coordinates of X = 2,674,181.86 and Y = 287,392.00; thence North 01 degrees 37 minutes 31 seconds West 738.30 feet along the East line of said State Lease No. 16890 to its Northeast corner, also being the Southeast corner of State Lease No. 16889 having Coordinates of X = 2,674,160.92 and Y = 288,130.00; thence along the boundary of said State Lease No. 16889 the following courses: North 01 degrees 37 minutes 30 seconds West 385.17 feet and South 73 degrees 14 minutes 30 seconds West 1,335.31 feet to the Southwest corner of said State Lease No. 16889, also being the most Northerly Northwest corner of said State Lease No. 16890 having Coordinates of X = 2,672,871.40 and Y = 288,130.00; thence South 73 degrees 14 minutes 30 seconds West 419.45 feet along the Northwesterly boundary line of said State Lease No. 16890 to a point, also being the Southeast corner of State Lease No. 17489 having Coordinates of X = 2,672,469.76 and Y = 288,009.06; thence along the boundary of said State Lease No. 17489 the following courses: North 37 degrees 16 minutes 30 seconds West 1,873.66 feet and South 81 degrees 09 minutes 07 seconds West 2,162.69 feet to the Northwest corner of State Lease No. 17489, also being a point on the East line of State Lease No. 16887 having Coordinates of X = 2,669,198.05 and Y = 289,167.35; thence North 14 degrees 53 minutes 37 seconds West 3,789.97 feet along the East line of said State Lease No. 16887 to its Northeast corner, also being a point on the North line of said Block 51 having Coordinates of X = 2,668,223.94 and Y = 292,830.00; thence East 11,376.06 feet along the North line of said Block 51 to the point of beginning,

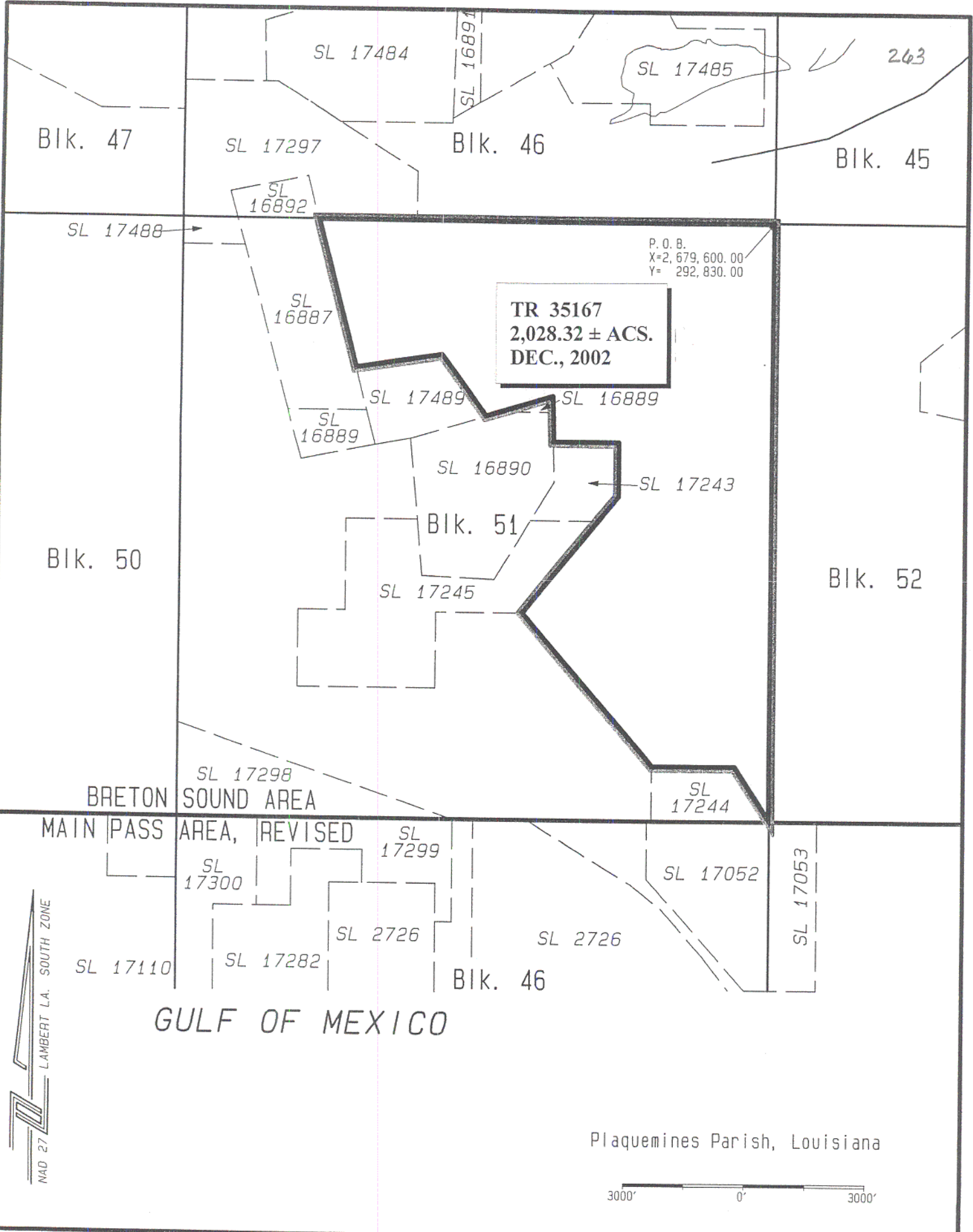
containing approximately **2,028.32 acres**, all as more particularly outlined on a plat on file in the Office of Mineral Resources, Department of Natural Resources, as provided by the applicant. All bearings, distances and coordinates are based on Louisiana Coordinate System of 1927, (North or South Zone), where applicable.

NOTE: The above description of the Tract nominated for lease has been provided and corrected, where required, exclusively by the nomination party. Any mineral lease selected from this Tract and awarded by the Louisiana State Mineral Board shall be without warranty of any kind, either express, implied, or statutory, including, but not limited to, the implied warranties of merchantability and fitness for a particular purpose. Should the mineral lease awarded by the Louisiana State Mineral Board be subsequently modified, cancelled or abrogated due to the existence of conflicting leases, operating agreements, private claims or other future obligations or conditions which may affect all or any portion of the leased Tract, it shall not relieve the Lessee of the obligation to pay any bonus due thereon to the Louisiana State Mineral Board, nor shall the Louisiana State Mineral Board be obligated to refund any consideration paid by the Lessor prior to such modification, cancellation, or abrogation, including, but not limited to, bonuses, rentals and royalties.

NOTE: The State of Louisiana does hereby reserve, and this lease shall be subject to, the imprescriptible right of surface use in the nature of a servitude in favor of the Department of Natural Resources, including its Offices and Commissions, for the sole purpose of implementing, constructing, servicing and maintaining approved coastal zone management and/or restoration projects. Utilization of any and all rights derived under this lease by the mineral lessee, its agents, successors or assigns, shall not interfere with nor hinder the reasonable surface use by the Department of Natural Resources, its Offices or Commissions, as herein above reserved.

Applicant: Mandy L. Trahan

| Bidder | Cash Payment | Price / Acre | Rental | Oil | Gas | Other |
|--------|--------------|--------------|--------|-----|-----|-------|
| | | | | | | |
| | | | | | | |
| | | | | | | |
| | | | | | | |



SL 17484

SL 17485

263

Bik. 47

SL 17297

Bik. 46

Bik. 45

SL 16892

SL 17488

P. O. B.
X=2,679,600.00
Y= 292,830.00

TR 35167
2,028.32 ± ACS.
DEC., 2002

SL 16887

SL 17489

SL 16889

SL 16889

SL 16890

SL 17243

Bik. 50

Bik. 51

Bik. 52

SL 17245

SL 17298

BRETON SOUND AREA

SL 17244

MAIN PASS AREA, REVISED

SL 17299

SL 17300

SL 17052

SL 17053

SL 2726

SL 2726

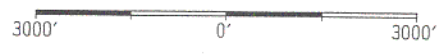
SL 17110

SL 17282

Bik. 46

GULF OF MEXICO

Plaquemines Parish, Louisiana



NAD 27
LAMBERT LA. SOUTH ZONE

TRACT 35168 - Portion of Block 46, Main Pass Area, Revised, Plaquemines Parish, Louisiana

All of the lands now or formerly constituting the beds and bottoms of all water bodies of every nature and description, and all islands and other lands formed by accretion, where allowed by law, or by reliction, and excepting tax adjudicated lands, belonging to the State of Louisiana and not presently under mineral lease on December 11, 2002, situated in Plaquemines Parish, Louisiana, and more particularly described as follows: Beginning at the Northeast corner of State Lease No. 17299, also being a point on the North line of Block 46 having Coordinates of X = 2,671,700.00 and Y = 278,080.00; thence East 525.00 feet on the North line of said Block 46 to the Northwest corner of the Northeast portion of State Lease No. 2726, as amended, having Coordinates of X = 2,672,225.00 and Y = 278,080.00; thence South 4,400.00 feet on the West line of said State Lease No. 2726 to its Southwest corner, also being the Northwest corner of State Lease No. 16848 having Coordinates of X = 2,672,225.00 and Y = 273,680.00; thence South 800.00 feet on the West line of said State Lease No. 16848 to the Northeast corner of State Lease No. 16847 having Coordinates of X = 2,672,225.00 and Y = 272,880.00; thence West 3,575.00 feet on the North line of said State Lease No. 16847 to the Southeast corner of State Lease No. 17282 having Coordinates of X = 2,668,650.00 and Y = 272,880.00; thence North 1,000.00 feet on the East line of said State Lease No. 17282 to the Southwest corner of the Northwestern portion of State Lease No. 2726, as amended, having Coordinates of X = 2,668,650.00 and Y = 273,880.00; thence along the boundary of said State Lease No. 2726 the following courses: East 2,640.00 feet and North 1,700.00 feet to the most Southerly Southwest corner of State Lease No. 17299 having Coordinates of X = 2,671,290.00 and Y = 275,580.00; thence along the boundary of said State Lease No. 17299 the following courses: East 410.00 feet and North 2,500.00 feet to the point of beginning, containing approximately **148.69 acres**, all as more particularly outlined on a plat on file in the Office of Mineral Resources, Department of Natural Resources, as provided by the applicant. All bearings, distances and coordinates are based on Louisiana Coordinate System of 1927, (North or South Zone), where applicable.

NOTE: The above description of the Tract nominated for lease has been provided and corrected, where required, exclusively by the nomination party. Any mineral lease selected from this Tract and awarded by the Louisiana State Mineral Board shall be without warranty of any kind, either express, implied, or statutory, including, but not limited to, the implied warranties of merchantability and fitness for a particular purpose. Should the mineral lease awarded by the Louisiana State Mineral Board be subsequently modified, cancelled or abrogated due to the existence of conflicting leases, operating agreements, private claims or other future obligations or conditions which may affect all or any portion of the leased Tract, it shall not relieve the Lessee of the obligation to pay any bonus due thereon to the Louisiana State Mineral Board, nor shall the Louisiana State Mineral Board be obligated to refund any consideration

paid by the Lessor prior to such modification, cancellation, or abrogation, including, but not limited to, bonuses, rentals and royalties.

NOTE: The State of Louisiana does hereby reserve, and this lease shall be subject to, the imprescriptible right of surface use in the nature of a servitude in favor of the Department of Natural Resources, including its Offices and Commissions, for the sole purpose of implementing, constructing, servicing and maintaining approved coastal zone management and/or restoration projects. Utilization of any and all rights derived under this lease by the mineral lessee, its agents, successors or assigns, shall not interfere with nor hinder the reasonable surface use by the Department of Natural Resources, its Offices or Commissions, as herein above reserved.

Applicant: Mandy L. Trahan

| Bidder | Cash Payment | Price / Acre | Rental | Oil | Gas | Other |
|--------|--------------|--------------|--------|-----|-----|-------|
| | | | | | | |
| | | | | | | |
| | | | | | | |
| | | | | | | |

266

BIK. 50

SL 17245

BIK. 51

BIK. 52

SL 17298

BRETON SOUND AREA

P. O. B.
X=2,671,700.00
Y= 278,080.00

SL 17244

MAIN PASS AREA, REVISED

SL 17300

SL 17299

TR 35168
148.69 ± ACS.
DEC., 2002

SL 2726
As Amended

SL 2726,
As Amended

SL 17053

SL 17110

SL 17282

BIK. 47

BIK. 46

SL 16848

BIK. 45

SL 16847

SL 2726,
As Amended

SL 17280

SL 16662

SL 16661

SL 16663

GULF OF MEXICO

Plaquemines Parish, Louisiana

NAD 27 LAMBERT LA. SOUTH ZONE

3000' 0' 3000'

TRACT 35169 - Portion of Block 46, Main Pass Area, Revised, Plaquemines Parish, Louisiana

All of the lands now or formerly constituting the beds and bottoms of all water bodies of every nature and description, and all islands and other lands formed by accretion, where allowed by law, or by reliction, and excepting tax adjudicated lands, belonging to the State of Louisiana and not presently under mineral lease on December 11, 2002, situated in Plaquemines Parish, Louisiana, and more particularly described as follows: Beginning at the Southeast corner of State Lease No. 17052, also being a point on the East line of said Block 46 having Coordinates of X = 2,679,600.00 and Y = 273,980.00; thence South 4,120.00 feet on the East line of said Block 46 to the Northeast corner of the Southeast portion of State Lease No. 2726, as amended, having Coordinates of X = 2,679,600.00 and Y = 269,860.00; thence along the boundary of said State Lease No. 2726 the following courses: North 62 degrees 26 minutes 58 seconds West 130.00 feet, North 53 degrees 03 minutes 01 seconds West 707.00 feet, North 65 degrees 45 minutes 00 seconds West 499.00 feet, North 57 degrees 31 minutes 59 seconds West 652.00 feet, North 69 degrees 44 minutes 01 seconds West 346.00 feet, North 61 degrees 22 minutes 57 seconds West 251.00 feet, North 53 degrees 28 minutes 00 seconds West 336.00 feet, North 64 degrees 00 minutes 01 seconds West 228.01 feet, North 81 degrees 52 minutes 03 seconds West 212.00 feet, North 64 degrees 39 minutes 01 seconds West 210.00 feet, North 39 degrees 48 minutes 01 seconds West 273.00 feet, North 58 degrees 30 minutes 57 seconds West 287.00 feet, North 46 degrees 43 minutes 56 seconds West 233.00 feet, North 18 degrees 39 minutes 00 seconds West 422.00 feet, North 45 degrees 30 minutes 01 seconds West 400.00 feet, and South 28 degrees 16 minutes 38 seconds West 1.65 feet to the Southeast corner of State Lease No. 16848 having Coordinates of X = 2,675,485.00 and Y = 272,758.09; thence North 521.21 feet on the East line of said State Lease No. 16848 to its Northeast corner, also being a point on the Southern boundary of the Northeast portion of State Lease No. 2726, as amended, having Coordinates of X = 2,675,485.00 and Y = 273,279.30; thence along the boundary of said State Lease No. 2726 the following courses: South 85 degrees 29 minutes 19 seconds East 211.76 feet, South 88 degrees 30 minutes 01 seconds East 1,500.01 feet; North 87 degrees 29 minutes 59 seconds East 600.00 feet, North 76 degrees 21 minutes 00 seconds East 1,188.61 feet, North 38 degrees 26 minutes 59 seconds West 1,627.30 feet, North 41 degrees 59 minutes 59 seconds West 1,500.00 feet, North 51 degrees 59 minutes 59 seconds West 1,000.00 feet and North 58 degrees 59 minutes 59 seconds West 2,999.99 feet to its Northeast corner, also being a point on the North line of said Block 46 having Coordinates of X = 2,673,575.00 and Y = 278,080.00; thence East 2,975.00 feet on the North line of said Block 46 to the Northeast corner of said State Lease No. 17052 having Coordinates of X = 2,676,550.00 and Y = 278,080.00; thence along the boundary of said State Lease No. 17052 the following courses: South 1,400.00 feet, South 42 degrees 13 minutes 15 seconds East 3,645.89 feet and East 600.00 feet to the point of beginning, containing approximately **299.16 acres**, all as more particularly outlined on a plat on file in the Office of Mineral Resources, Department of Natural Resources, as provided by the applicant.

All bearings, distances and coordinates are based on Louisiana Coordinate System of 1927, (North or South Zone), where applicable.

NOTE: The above description of the Tract nominated for lease has been provided and corrected, where required, exclusively by the nomination party. Any mineral lease selected from this Tract and awarded by the Louisiana State Mineral Board shall be without warranty of any kind, either express, implied, or statutory, including, but not limited to, the implied warranties of merchantability and fitness for a particular purpose. Should the mineral lease awarded by the Louisiana State Mineral Board be subsequently modified, cancelled or abrogated due to the existence of conflicting leases, operating agreements, private claims or other future obligations or conditions which may affect all or any portion of the leased Tract, it shall not relieve the Lessee of the obligation to pay any bonus due thereon to the Louisiana State Mineral Board, nor shall the Louisiana State Mineral Board be obligated to refund any consideration paid by the Lessor prior to such modification, cancellation, or abrogation, including, but not limited to, bonuses, rentals and royalties.

NOTE: The State of Louisiana does hereby reserve, and this lease shall be subject to, the imprescriptible right of surface use in the nature of a servitude in favor of the Department of Natural Resources, including its Offices and Commissions, for the sole purpose of implementing, constructing, servicing and maintaining approved coastal zone management and/or restoration projects. Utilization of any and all rights derived under this lease by the mineral lessee, its agents, successors or assigns, shall not interfere with nor hinder the reasonable surface use by the Department of Natural Resources, its Offices or Commissions, as herein above reserved.

Applicant: Mandy L. Trahan

| Bidder | Cash Payment | Price / Acre | Rental | Oil | Gas | Other |
|--------|--------------|--------------|--------|-----|-----|-------|
| | | | | | | |
| | | | | | | |
| | | | | | | |
| | | | | | | |

269

BIK. 50

SL 17245

BIK. 51

BIK. 52

TR 35169
299.16 ± ACS.
DEC., 2002

SL 17298

BRETON SOUND AREA

SL 17244

MAIN PASS AREA, REVISED

SL 17300

SL 17299

SL 17052

SL 17053

SL 17110

SL 17282

SL 2726
As Amended

SL 2726,
As Amended

P. O. B.
X=2,679,600.00
Y=273,980.00

BIK. 47

BIK. 46

SL 16848

BIK. 45

SL 16847

SL 2726,
As Amended

SL 17280

SL 16662

SL 16661

SL 16663

GULF OF MEXICO

Plaquemines Parish, Louisiana

NAD 27 LAMBERT LA. SOUTH ZONE

