

TRACT 35142 - Vermilion Parish, Louisiana

All of the lands now or formerly constituting the beds and bottoms of all water bodies of every nature and description, and all islands and other lands formed by accretion, where allowed by law, or by reliction, and excepting tax adjudicated lands, belonging to the State of Louisiana and not presently under mineral lease on December 11, 2002, situated in Vermilion Parish, Louisiana, and more particularly described as follows: Beginning at a point having Coordinates of X = 1,780,100.00 and Y = 395,600.00; thence East 8,000.00 feet to a point having Coordinates of X = 1,788,100.00 and Y = 395,600.00; thence South 13,000.00 feet to a point having Coordinates of X = 1,788,100.00 and Y = 382,600.00; thence West 5,900.00 feet to a point having Coordinates of X = 1,782,200.00 and Y = 382,600.00; thence North 2,900.00 feet to a point having Coordinates of X = 1,782,200.00 and Y = 385,500.00; thence West 2,100.00 feet to a point having Coordinates of X = 1,780,100.00 and Y = 385,500.00; thence North 10,100.00 feet to the point of beginning, containing approximately **2,247.70 acres**, all as more particularly outlined on a plat on file in the Office of Mineral Resources, Department of Natural Resources, as provided by the applicant. All bearings, distances and coordinates are based on Louisiana Coordinate System of 1927, (North or South Zone), where applicable.

NOTE: The above description of the Tract nominated for lease has been provided and corrected, where required, exclusively by the nomination party. Any mineral lease selected from this Tract and awarded by the Louisiana State Mineral Board shall be without warranty of any kind, either express, implied, or statutory, including, but not limited to, the implied warranties of merchantability and fitness for a particular purpose. Should the mineral lease awarded by the Louisiana State Mineral Board be subsequently modified, cancelled or abrogated due to the existence of conflicting leases, operating agreements, private claims or other future obligations or conditions which may affect all or any portion of the leased Tract, it shall not relieve the Lessee of the obligation to pay any bonus due thereon to the Louisiana State Mineral Board, nor shall the Louisiana State Mineral Board be obligated to refund any consideration paid by the Lessor prior to such modification, cancellation, or abrogation, including, but not limited to, bonuses, rentals and royalties.

NOTE: The Department of Wildlife and Fisheries has designated certain areas in the coastal waters of the State of Louisiana as Oyster Seed Bed Areas. The exact location of those Seed Bed Areas must be obtained from the Department of Wildlife and Fisheries and any work done under a mineral lease from the State of Louisiana may necessarily be conducted in conformity with the rules and regulations promulgated by the said Department of Wildlife and Fisheries for Oyster Seed Bed Areas.

NOTE: The State of Louisiana does hereby reserve, and this lease shall be subject to, the imprescriptible right of surface use in the nature of a servitude in favor of the Department of Natural Resources, including its Offices and Commissions, for the sole purpose of implementing,

constructing, servicing and maintaining approved coastal zone management and/or restoration projects. Utilization of any and all rights derived under this lease by the mineral lessee, its agents, successors or assigns, shall not interfere with nor hinder the reasonable surface use by the Department of Natural Resources, its Offices or Commissions, as herein above reserved.

Applicant: Carrie Smith

Bidder	Cash Payment	Price / Acre	Rental	Oil	Gas	Other

P.O.B.

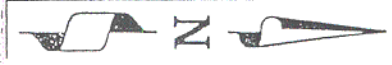
X = 1,780,100.00

Y = 395,600.00

VERMILION
BAY

TR 35142
2,247.70 ± ACS.
DEC., 2002

VERMILION PARISH



TRACT 35143 - Iberia and Vermilion Parishes, Louisiana

All of the lands now or formerly constituting the beds and bottoms of all water bodies of every nature and description, and all islands and other lands formed by accretion, where allowed by law, or by reliction, and excepting tax adjudicated lands, belonging to the State of Louisiana and not presently under mineral lease on December 11, 2002, situated in Iberia and Vermilion Parishes, Louisiana, and more particularly described as follows: Beginning at a point having Coordinates of X = 1,796,100.00 and Y = 395,600.00; thence South 13,000.00 feet to a point having Coordinates of X = 1,796,100.00 and Y = 382,600.00; thence West 8,000.00 feet to a point having Coordinates of X = 1,788,100.00 and Y = 382,600.00; thence North 13,000.00 feet to a point having Coordinates of X = 1,788,100.00 and Y = 395,600.00; thence East 8,000.00 feet to the point of beginning, containing approximately **2,387.51 acres**, all as more particularly outlined on a plat on file in the Office of Mineral Resources, Department of Natural Resources, as provided by the applicant. All bearings, distances and coordinates are based on Louisiana Coordinate System of 1927, (North or South Zone), where applicable.

NOTE: The above description of the Tract nominated for lease has been provided and corrected, where required, exclusively by the nomination party. Any mineral lease selected from this Tract and awarded by the Louisiana State Mineral Board shall be without warranty of any kind, either express, implied, or statutory, including, but not limited to, the implied warranties of merchantability and fitness for a particular purpose. Should the mineral lease awarded by the Louisiana State Mineral Board be subsequently modified, cancelled or abrogated due to the existence of conflicting leases, operating agreements, private claims or other future obligations or conditions which may affect all or any portion of the leased Tract, it shall not relieve the Lessee of the obligation to pay any bonus due thereon to the Louisiana State Mineral Board, nor shall the Louisiana State Mineral Board be obligated to refund any consideration paid by the Lessor prior to such modification, cancellation, or abrogation, including, but not limited to, bonuses, rentals and royalties.

NOTE: The Department of Wildlife and Fisheries has designated certain areas in the coastal waters of the State of Louisiana as Oyster Seed Bed Areas. The exact location of those Seed Bed Areas must be obtained from the Department of Wildlife and Fisheries and any work done under a mineral lease from the State of Louisiana may necessarily be conducted in conformity with the rules and regulations promulgated by the said Department of Wildlife and Fisheries for Oyster Seed Bed Areas.

NOTE: The State of Louisiana does hereby reserve, and this lease shall be subject to, the imprescriptible right of surface use in the nature of a servitude in favor of the Department of Natural Resources, including its Offices and Commissions, for the sole purpose of implementing, constructing, servicing and maintaining approved coastal zone management and/or restoration projects. Utilization of any and all rights derived under this lease by the mineral lessee, its agents, successors or assigns,

shall not interfere with nor hinder the reasonable surface use by the Department of Natural Resources, its Offices or Commissions, as herein above reserved.

Applicant: Carrie Smith

Bidder	Cash Payment	Price / Acre	Rental	Oil	Gas	Other

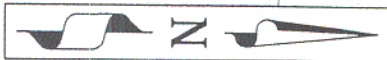
VERMILION AND IBERIA PARISHES

VERMILION
IBERIA

TR 35143
2,387.51 ± ACS.
DEC., 2002

VERMILION PARISH
IBERIA PARISH

P.O.B.
X = 1,796,100.00'
Y = 395,600.00'



2000' 0' 2000'



TRACT 35144 - Iberia and Vermilion Parishes, Louisiana

All of the lands now or formerly constituting the beds and bottoms of all water bodies of every nature and description, and all islands and other lands formed by accretion, where allowed by law, or by reliction, and excepting tax adjudicated lands, belonging to the State of Louisiana and not presently under mineral lease on December 11, 2002, situated in Iberia and Vermilion Parishes, Louisiana, and more particularly described as follows: Beginning at a point having Coordinates of X = 1,796,100.00 and Y = 395,600.00; thence East 8,000.00 feet to a point having Coordinates of X = 1,804,100.00 and Y = 395,600.00; thence South 13,000.00 feet to a point having Coordinates of X = 1,804,100.00 and Y = 382,600.00; thence West 8,000.00 feet to a point having Coordinates of X = 1,796,100.00 and Y = 382,600.00; thence North 13,000.00 feet to the point of beginning, containing approximately **2,387.51 acres**, all as more particularly outlined on a plat on file in the Office of Mineral Resources, Department of Natural Resources, as provided by the applicant. All bearings, distances and coordinates are based on Louisiana Coordinate System of 1927, (North or South Zone), where applicable.

NOTE: The above description of the Tract nominated for lease has been provided and corrected, where required, exclusively by the nomination party. Any mineral lease selected from this Tract and awarded by the Louisiana State Mineral Board shall be without warranty of any kind, either express, implied, or statutory, including, but not limited to, the implied warranties of merchantability and fitness for a particular purpose. Should the mineral lease awarded by the Louisiana State Mineral Board be subsequently modified, cancelled or abrogated due to the existence of conflicting leases, operating agreements, private claims or other future obligations or conditions which may affect all or any portion of the leased Tract, it shall not relieve the Lessee of the obligation to pay any bonus due thereon to the Louisiana State Mineral Board, nor shall the Louisiana State Mineral Board be obligated to refund any consideration paid by the Lessor prior to such modification, cancellation, or abrogation, including, but not limited to, bonuses, rentals and royalties.

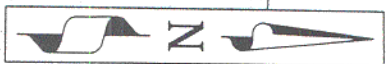
NOTE: The Department of Wildlife and Fisheries has designated certain areas in the coastal waters of the State of Louisiana as Oyster Seed Bed Areas. The exact location of those Seed Bed Areas must be obtained from the Department of Wildlife and Fisheries and any work done under a mineral lease from the State of Louisiana may necessarily be conducted in conformity with the rules and regulations promulgated by the said Department of Wildlife and Fisheries for Oyster Seed Bed Areas.

NOTE: The State of Louisiana does hereby reserve, and this lease shall be subject to, the imprescriptible right of surface use in the nature of a servitude in favor of the Department of Natural Resources, including its Offices and Commissions, for the sole purpose of implementing, constructing, servicing and maintaining approved coastal zone management and/or restoration projects. Utilization of any and all rights derived under this lease by the mineral lessee, its agents, successors or assigns,

shall not interfere with nor hinder the reasonable surface use by the Department of Natural Resources, its Offices or Commissions, as herein above reserved.

Applicant: Carrie Smith

Bidder	Cash Payment	Price / Acre	Rental	Oil	Gas	Other



P.O.B.
X = 1,796,100.00'
Y = 395,600.00'

VERMILION
BAY

VERMILION PARISH
IBERIA PARISH

TR 35144
2,387.51 ± ACS.
DEC., 2002

VERMILION AND IBERIA PARISHES



SL 347
193

TRACT 35145 - Iberia Parish, Louisiana

All of the lands now or formerly constituting the beds and bottoms of all water bodies of every nature and description, and all islands and other lands formed by accretion, where allowed by law, or by reliction, and excepting tax adjudicated lands, belonging to the State of Louisiana and not presently under mineral lease on December 11, 2002, situated in Iberia Parish, Louisiana, and more particularly described as follows: Beginning at a point having Coordinates of X = 1,812,100.00 and Y = 395,600.00; thence South 13,000.00 feet to a point having Coordinates of X = 1,812,100.00 and Y = 382,600.00; thence West 668.66 feet to a point on the Eastern boundary of State lease No. 334, as amended, having Coordinates of X = 1,811,431.34 and Y = 382,600.00; thence North 07 degrees 09 minutes 09 seconds East 840.35 feet along the said Eastern boundary of State Lease No 334, as amended, to its Northernmost Northeast corner having Coordinates of X = 1,811,536.19 and Y = 383,433.78; thence North 89 degrees 35 minutes 29 seconds West 4,255.83 feet along the Northern boundary of said State Lease No. 334 to its Northwest corner having Coordinates of X = 1,807,280.47 and Y = 383,464.14; thence South 00 degrees 16 minutes 27 seconds West 864.15 feet along the Western boundary of said State Lease No. 334 to a point having Coordinates of X = 1,807,276.34 and Y = 382,600.00; thence West 3,176.34 feet to a point having Coordinates of X = 1,804,100.00 and Y = 382,600.00; thence North 13,000.00 feet to a point having Coordinates of X = 1,804,100.00 and Y = 395,600.00; thence East 8,000.00 feet to the point of beginning, containing approximately **2,305.53 acres**, all as more particularly outlined on a plat on file in the Office of Mineral Resources, Department of Natural Resources, as provided by the applicant. All bearings, distances and coordinates are based on Louisiana Coordinate System of 1927, (North or South Zone), where applicable.

NOTE: The above description of the Tract nominated for lease has been provided and corrected, where required, exclusively by the nomination party. Any mineral lease selected from this Tract and awarded by the Louisiana State Mineral Board shall be without warranty of any kind, either express, implied, or statutory, including, but not limited to, the implied warranties of merchantability and fitness for a particular purpose. Should the mineral lease awarded by the Louisiana State Mineral Board be subsequently modified, cancelled or abrogated due to the existence of conflicting leases, operating agreements, private claims or other future obligations or conditions which may affect all or any portion of the leased Tract, it shall not relieve the Lessee of the obligation to pay any bonus due thereon to the Louisiana State Mineral Board, nor shall the Louisiana State Mineral Board be obligated to refund any consideration paid by the Lessor prior to such modification, cancellation, or abrogation, including, but not limited to, bonuses, rentals and royalties.

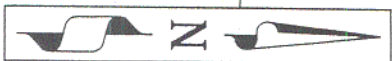
NOTE: The Department of Wildlife and Fisheries has designated certain areas in the coastal waters of the State of Louisiana as Oyster Seed Bed Areas. The exact location of those Seed Bed Areas must be obtained from the Department of Wildlife and Fisheries and any work done under a mineral lease from the State of Louisiana may necessarily be conducted in

conformity with the rules and regulations promulgated by the said Department of Wildlife and Fisheries for Oyster Seed Bed Areas.

NOTE: The State of Louisiana does hereby reserve, and this lease shall be subject to, the imprescriptible right of surface use in the nature of a servitude in favor of the Department of Natural Resources, including its Offices and Commissions, for the sole purpose of implementing, constructing, servicing and maintaining approved coastal zone management and/or restoration projects. Utilization of any and all rights derived under this lease by the mineral lessee, its agents, successors or assigns, shall not interfere with nor hinder the reasonable surface use by the Department of Natural Resources, its Offices or Commissions, as herein above reserved.

Applicant: Carrie Smith

Bidder	Cash Payment	Price / Acre	Rental	Oil	Gas	Other



P.O.B.
X = 1,812,100.00'
Y = 395,600.00'

TR 35145
2,305.53 ± ACS.
DEC., 2002

VERMILION
BAY

IBERIA PARISH

SL 334

B

A

1

2000' 0' 2000'



961

TRACT 35146 - Iberia Parish, Louisiana

All of the lands now or formerly constituting the beds and bottoms of all water bodies of every nature and description, and all islands and other lands formed by accretion, where allowed by law, or by reliction, and excepting tax adjudicated lands, belonging to the State of Louisiana and not presently under mineral lease on December 11, 2002, situated in Iberia Parish, Louisiana, and more particularly described as follows: Beginning at a point having Coordinates of X = 1,812,100.00 and Y = 395,600.00; thence East 8,000.00 feet to a point having Coordinates of X = 1,820,100.00 and Y = 395,600.00; thence South 13,000.00 feet to a point having Coordinates of X = 1,820,100.00 and Y = 382,600.00; thence West 8,000.00 feet to a point having Coordinates of X = 1,812,100.00 and Y = 382,600.00; thence North 13,000.00 feet to the point of beginning, containing approximately **2,387.51 acres**, all as more particularly outlined on a plat on file in the Office of Mineral Resources, Department of Natural Resources, as provided by the applicant. All bearings, distances and coordinates are based on Louisiana Coordinate System of 1927, (North or South Zone), where applicable.

NOTE: The above description of the Tract nominated for lease has been provided and corrected, where required, exclusively by the nomination party. Any mineral lease selected from this Tract and awarded by the Louisiana State Mineral Board shall be without warranty of any kind, either express, implied, or statutory, including, but not limited to, the implied warranties of merchantability and fitness for a particular purpose. Should the mineral lease awarded by the Louisiana State Mineral Board be subsequently modified, cancelled or abrogated due to the existence of conflicting leases, operating agreements, private claims or other future obligations or conditions which may affect all or any portion of the leased Tract, it shall not relieve the Lessee of the obligation to pay any bonus due thereon to the Louisiana State Mineral Board, nor shall the Louisiana State Mineral Board be obligated to refund any consideration paid by the Lessor prior to such modification, cancellation, or abrogation, including, but not limited to, bonuses, rentals and royalties.

NOTE: The Department of Wildlife and Fisheries has designated certain areas in the coastal waters of the State of Louisiana as Oyster Seed Bed Areas. The exact location of those Seed Bed Areas must be obtained from the Department of Wildlife and Fisheries and any work done under a mineral lease from the State of Louisiana may necessarily be conducted in conformity with the rules and regulations promulgated by the said Department of Wildlife and Fisheries for Oyster Seed Bed Areas.

NOTE: The State of Louisiana does hereby reserve, and this lease shall be subject to, the imprescriptible right of surface use in the nature of a servitude in favor of the Department of Natural Resources, including its Offices and Commissions, for the sole purpose of implementing, constructing, servicing and maintaining approved coastal zone management and/or restoration projects. Utilization of any and all rights derived under this lease by the mineral lessee, its agents, successors or assigns,

shall not interfere with nor hinder the reasonable surface use by the Department of Natural Resources, its Offices or Commissions, as herein above reserved.

Applicant: Carrie Smith

Bidder	Cash Payment	Price / Acre	Rental	Oil	Gas	Other

P.O.B.
X= 1,812,100.00'
Y= 395,600.00'

VERMILION
BAY

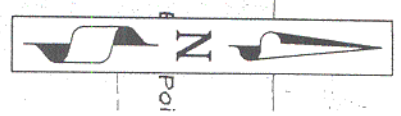
TR 35146
2,387.51 ± ACS.
DEC., 2002

IBERIA PARISH

B

A

Y



661

TRACT 35147 - Iberia and Vermilion Parishes, Louisiana

All of the lands now or formerly constituting the beds and bottoms of all water bodies of every nature and description, and all islands and other lands formed by accretion, where allowed by law, or by reliction, and excepting tax adjudicated lands, belonging to the State of Louisiana and not presently under mineral lease on December 11, 2002, situated in Iberia and Vermilion Parishes, Louisiana, and more particularly described as follows: Beginning at a point having Coordinates of X = 1,796,100.00 and Y = 369,600.00; thence West 8,000.00 feet to a point having Coordinates of X = 1,788,100.00 and Y = 369,600.00; thence North 13,000.00 feet to a point having Coordinates of X = 1,788,100.00 and Y = 382,600.00; thence East 8,000.00 feet to a point having Coordinates of X = 1,796,100.00 and Y = 382,600.00; thence South 13,000.00 feet to the point of beginning, containing approximately **2,387.51 acres**, all as more particularly outlined on a plat on file in the Office of Mineral Resources, Department of Natural Resources, as provided by the applicant. All bearings, distances and coordinates are based on Louisiana Coordinate System of 1927, (North or South Zone), where applicable.

NOTE: The above description of the Tract nominated for lease has been provided and corrected, where required, exclusively by the nomination party. Any mineral lease selected from this Tract and awarded by the Louisiana State Mineral Board shall be without warranty of any kind, either express, implied, or statutory, including, but not limited to, the implied warranties of merchantability and fitness for a particular purpose. Should the mineral lease awarded by the Louisiana State Mineral Board be subsequently modified, cancelled or abrogated due to the existence of conflicting leases, operating agreements, private claims or other future obligations or conditions which may affect all or any portion of the leased Tract, it shall not relieve the Lessee of the obligation to pay any bonus due thereon to the Louisiana State Mineral Board, nor shall the Louisiana State Mineral Board be obligated to refund any consideration paid by the Lessor prior to such modification, cancellation, or abrogation, including, but not limited to, bonuses, rentals and royalties.

NOTE: The Department of Wildlife and Fisheries has designated certain areas in the coastal waters of the State of Louisiana as Oyster Seed Bed Areas. The exact location of those Seed Bed Areas must be obtained from the Department of Wildlife and Fisheries and any work done under a mineral lease from the State of Louisiana may necessarily be conducted in conformity with the rules and regulations promulgated by the said Department of Wildlife and Fisheries for Oyster Seed Bed Areas.

NOTE: The State of Louisiana does hereby reserve, and this lease shall be subject to, the imprescriptible right of surface use in the nature of a servitude in favor of the Department of Natural Resources, including its Offices and Commissions, for the sole purpose of implementing, constructing, servicing and maintaining approved coastal zone management and/or restoration projects. Utilization of any and all rights derived under this lease by the mineral lessee, its agents, successors or assigns,

shall not interfere with nor hinder the reasonable surface use by the Department of Natural Resources, its Offices or Commissions, as herein above reserved.

Applicant: Carrie Smith

Bidder	Cash Payment	Price / Acre	Rental	Oil	Gas	Other

VERMILION AND IBERIA PARISHES

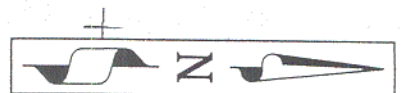
TR 35147
2,387.51 ± ACS.
DEC., 2002

INDEFINITE

BOUNDARY

VERMILION
IBERIA

P.O.B.
X= 1,796,100.00'
Y= 369,600.00'



TRACT 35148 - Iberia and Vermilion Parishes, Louisiana

All of the lands now or formerly constituting the beds and bottoms of all water bodies of every nature and description, and all islands and other lands formed by accretion, where allowed by law, or by reliction, and excepting tax adjudicated lands, belonging to the State of Louisiana and not presently under mineral lease on December 11, 2002, situated in Iberia and Vermilion Parishes, Louisiana, and more particularly described as follows: Beginning at a point having Coordinates of X = 1,796,100.00 and Y = 369,600.00; thence North 13,000.00 feet to a point having Coordinates of X = 1,796,100.00 and Y = 382,600.00; thence East 8,000.00 feet to a point having Coordinates of X = 1,804,100.00 and Y = 382,600.00; thence South 4,655.21 feet to a point on the Western boundary of State Lease No. 334, as amended, having Coordinates of X = 1,804,100.00 and Y = 377,944.79; thence along the said Western boundary of said State Lease No. 334 the following courses: South 38 degrees 21 minutes 21 seconds West 241.87 feet to a point having Coordinates of X = 1,803,949.91 and Y = 377,755.12, South 36 degrees 15 minutes 51 seconds West 182.41 feet to a point having Coordinates of X = 1,803,842.01 and Y = 377,608.04, South 31 degrees 11 minutes 42 seconds West 254.85 feet to a point having Coordinates of X = 1,803,710.01 and Y = 377,390.04, South 02 degrees 43 minutes 49 seconds West 3,157.92 feet to a point having Coordinates of X = 1,803,559.57 and Y = 374,235.71, South 25 degrees 27 minutes 59 seconds East 1,256.86 feet to a point having Coordinates of X = 1,804,100.00 and Y = 373,100.97; thence South 3,500.97 feet to a point having Coordinates of X = 1,804,100.00 and Y = 369,600.00; thence West 8,000.00 feet to the point of beginning, containing approximately **2,344.15 acres**, all as more particularly outlined on a plat on file in the Office of Mineral Resources, Department of Natural Resources, as provided by the applicant. All bearings, distances and coordinates are based on Louisiana Coordinate System of 1927, (North or South Zone), where applicable.

NOTE: The above description of the Tract nominated for lease has been provided and corrected, where required, exclusively by the nomination party. Any mineral lease selected from this Tract and awarded by the Louisiana State Mineral Board shall be without warranty of any kind, either express, implied, or statutory, including, but not limited to, the implied warranties of merchantability and fitness for a particular purpose. Should the mineral lease awarded by the Louisiana State Mineral Board be subsequently modified, cancelled or abrogated due to the existence of conflicting leases, operating agreements, private claims or other future obligations or conditions which may affect all or any portion of the leased Tract, it shall not relieve the Lessee of the obligation to pay any bonus due thereon to the Louisiana State Mineral Board, nor shall the Louisiana State Mineral Board be obligated to refund any consideration paid by the Lessor prior to such modification, cancellation, or abrogation, including, but not limited to, bonuses, rentals and royalties.

NOTE: The Department of Wildlife and Fisheries has designated certain areas in the coastal waters of the State of Louisiana as Oyster Seed Bed Areas. The exact location of those Seed Bed Areas must be obtained from

the Department of Wildlife and Fisheries and any work done under a mineral lease from the State of Louisiana may necessarily be conducted in conformity with the rules and regulations promulgated by the said Department of Wildlife and Fisheries for Oyster Seed Bed Areas.

NOTE: The State of Louisiana does hereby reserve, and this lease shall be subject to, the imprescriptible right of surface use in the nature of a servitude in favor of the Department of Natural Resources, including its Offices and Commissions, for the sole purpose of implementing, constructing, servicing and maintaining approved coastal zone management and/or restoration projects. Utilization of any and all rights derived under this lease by the mineral lessee, its agents, successors or assigns, shall not interfere with nor hinder the reasonable surface use by the Department of Natural Resources, its Offices or Commissions, as herein above reserved.

Applicant: Carrie Smith

Bidder	Cash Payment	Price / Acre	Rental	Oil	Gas	Other

VERMILION
BAY

P.O.B.
X = 1,796,100.00'
Y = 369,600.00'

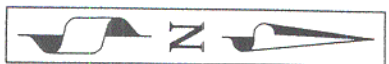
INFINITE
BOUNDARY

TR 35148
2,344.15 ± ACS.
DEC., 2002

IBERIA AND VERMILION PARISHES

VERMILION

SL 334



205

TRACT 35149 - Iberia and St. Mary Parishes, Louisiana

All of the lands now or formerly constituting the beds and bottoms of all water bodies of every nature and description, and all islands and other lands formed by accretion, where allowed by law, or by reliction, and excepting tax adjudicated lands, belonging to the State of Louisiana and not presently under mineral lease on December 11, 2002, situated in Iberia and St. Mary Parishes, Louisiana, and more particularly described as follows: Beginning at a point having Coordinates of X = 1,899,400.00 and Y = 331,000.00; thence South 3,350.00 feet to a point having Coordinates of X = 1,899,400.00 and Y = 327,650.00; thence West 2,400.00 feet to a point having Coordinates of X = 1,897,000.00 and Y = 327,650.00; thence North 10,000.00 feet to a point having Coordinates of X = 1,897,000.00 and Y = 337,650.00; thence East 3,500.00 feet to the Northwest corner of State Lease No. 16382 having Coordinates of X = 1,900,500.00 and Y = 337,650.00; thence South 4,650.00 feet along the West boundary of said State Lease No. 16382 to its Southwest corner, said corner also being the Northwest corner of State Lease No. 17135 having Coordinates of X = 1,900,500.00 and Y = 333,000.00; thence South 2,000.00 feet along the West boundary of said State Lease No. 17135 to its Southwest corner having Coordinates of X = 1,900,500.00 and Y = 331,000.00; thence West 1,100.00 feet to the point of beginning, containing approximately **718.89 acres**, all as more particularly outlined on a plat on file in the Office of Mineral Resources, Department of Natural Resources, as provided by the applicant. All bearings, distances and coordinates are based on Louisiana Coordinate System of 1927, (North or South Zone), where applicable.

NOTE: The above description of the Tract nominated for lease has been provided and corrected, where required, exclusively by the nomination party. Any mineral lease selected from this Tract and awarded by the Louisiana State Mineral Board shall be without warranty of any kind, either express, implied, or statutory, including, but not limited to, the implied warranties of merchantability and fitness for a particular purpose. Should the mineral lease awarded by the Louisiana State Mineral Board be subsequently modified, cancelled or abrogated due to the existence of conflicting leases, operating agreements, private claims or other future obligations or conditions which may affect all or any portion of the leased Tract, it shall not relieve the Lessee of the obligation to pay any bonus due thereon to the Louisiana State Mineral Board, nor shall the Louisiana State Mineral Board be obligated to refund any consideration paid by the Lessor prior to such modification, cancellation, or abrogation, including, but not limited to, bonuses, rentals and royalties.

NOTE: The Department of Wildlife and Fisheries has designated certain areas in the coastal waters of the State of Louisiana as Oyster Seed Bed Areas. The exact location of those Seed Bed Areas must be obtained from the Department of Wildlife and Fisheries and any work done under a mineral lease from the State of Louisiana may necessarily be conducted in conformity with the rules and regulations promulgated by the said Department of Wildlife and Fisheries for Oyster Seed Bed Areas.

NOTE: The State of Louisiana does hereby reserve, and this lease shall be subject to, the imprescriptible right of surface use in the nature of a servitude in favor of the Department of Natural Resources, including its Offices and Commissions, for the sole purpose of implementing, constructing, servicing and maintaining approved coastal zone management and/or restoration projects. Utilization of any and all rights derived under this lease by the mineral lessee, its agents, successors or assigns, shall not interfere with nor hinder the reasonable surface use by the Department of Natural Resources, its Offices or Commissions, as herein above reserved.

Applicant: Mineral Services, Inc.

Bidder	Cash Payment	Price / Acre	Rental	Oil	Gas	Other

S.L. 10835

S.L. 16965

ST MARY PARISH
IBERIA PARISH

TR 35149
718.89 ± ACS.
DEC., 2002

P.O.B.
X = 1,899,400.00'
Y = 331,000.00'

S.L. 16382

S.L. 17135

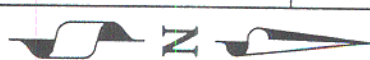
S.L. 10251

Platform S.L. 3132

S.L. 16383

LAKE SAND
EAST
OIL AND
GAS FIELD

Platform



ST. MARY AND IBERIA PARISHES
EAST COTE BLANCHE BAY AREA

2000'

0'

2000'

208

TRACT 35150 - Iberia and St. Mary Parishes, Louisiana

All of the lands now or formerly constituting the beds and bottoms of all water bodies of every nature and description, and all islands and other lands formed by accretion, where allowed by law, or by reliction, and excepting tax adjudicated lands, belonging to the State of Louisiana and not presently under mineral lease on December 11, 2002, situated in Iberia and St. Mary Parishes, Louisiana, and more particularly described as follows: Beginning at a point having Coordinates of X = 1,899,400.00 and Y = 331,000.00; thence East 1,100.00 feet to the Southwest corner of State Lease No. 17135 having Coordinates of X = 1,900,500.00 and Y = 331,000.00; thence East 9,872.32 feet along the South boundary of said State Lease No. 17135 to its Southeast corner having Coordinates of X = 1,910,372.32 and Y = 331,000.00; thence East 700.00 feet to a point having Coordinates of X = 1,911,072.32 and Y = 331,000.00; thence South 9,329.76 feet to a point having Coordinates of X = 1,911,072.32 and Y = 321,670.24; thence West 11,672.32 feet to a point having Coordinates of X = 1,899,400.00 and Y = 321,670.24; thence North 9,329.76 feet to the point of beginning, containing approximately **2,500.00 acres**, all as more particularly outlined on a plat on file in the Office of Mineral Resources, Department of Natural Resources, as provided by the applicant. All bearings, distances and coordinates are based on Louisiana Coordinate System of 1927, (North or South Zone), where applicable.

NOTE: The above description of the Tract nominated for lease has been provided and corrected, where required, exclusively by the nomination party. Any mineral lease selected from this Tract and awarded by the Louisiana State Mineral Board shall be without warranty of any kind, either express, implied, or statutory, including, but not limited to, the implied warranties of merchantability and fitness for a particular purpose. Should the mineral lease awarded by the Louisiana State Mineral Board be subsequently modified, cancelled or abrogated due to the existence of conflicting leases, operating agreements, private claims or other future obligations or conditions which may affect all or any portion of the leased Tract, it shall not relieve the Lessee of the obligation to pay any bonus due thereon to the Louisiana State Mineral Board, nor shall the Louisiana State Mineral Board be obligated to refund any consideration paid by the Lessor prior to such modification, cancellation, or abrogation, including, but not limited to, bonuses, rentals and royalties.

NOTE: The Department of Wildlife and Fisheries has designated certain areas in the coastal waters of the State of Louisiana as Oyster Seed Bed Areas. The exact location of those Seed Bed Areas must be obtained from the Department of Wildlife and Fisheries and any work done under a mineral lease from the State of Louisiana may necessarily be conducted in conformity with the rules and regulations promulgated by the said Department of Wildlife and Fisheries for Oyster Seed Bed Areas.

NOTE: The State of Louisiana does hereby reserve, and this lease shall be subject to, the imprescriptible right of surface use in the nature of a servitude in favor of the Department of Natural Resources, including its

Offices and Commissions, for the sole purpose of implementing, constructing, servicing and maintaining approved coastal zone management and/or restoration projects. Utilization of any and all rights derived under this lease by the mineral lessee, its agents, successors or assigns, shall not interfere with nor hinder the reasonable surface use by the Department of Natural Resources, its Offices or Commissions, as herein above reserved.

Applicant: Mineral Services, Inc.

Bidder	Cash Payment	Price / Acre	Rental	Oil	Gas	Other

ST MARY
IBERIA PARISH

P.O.B.
X= 1,899,400.00'
Y= 331,000.00'

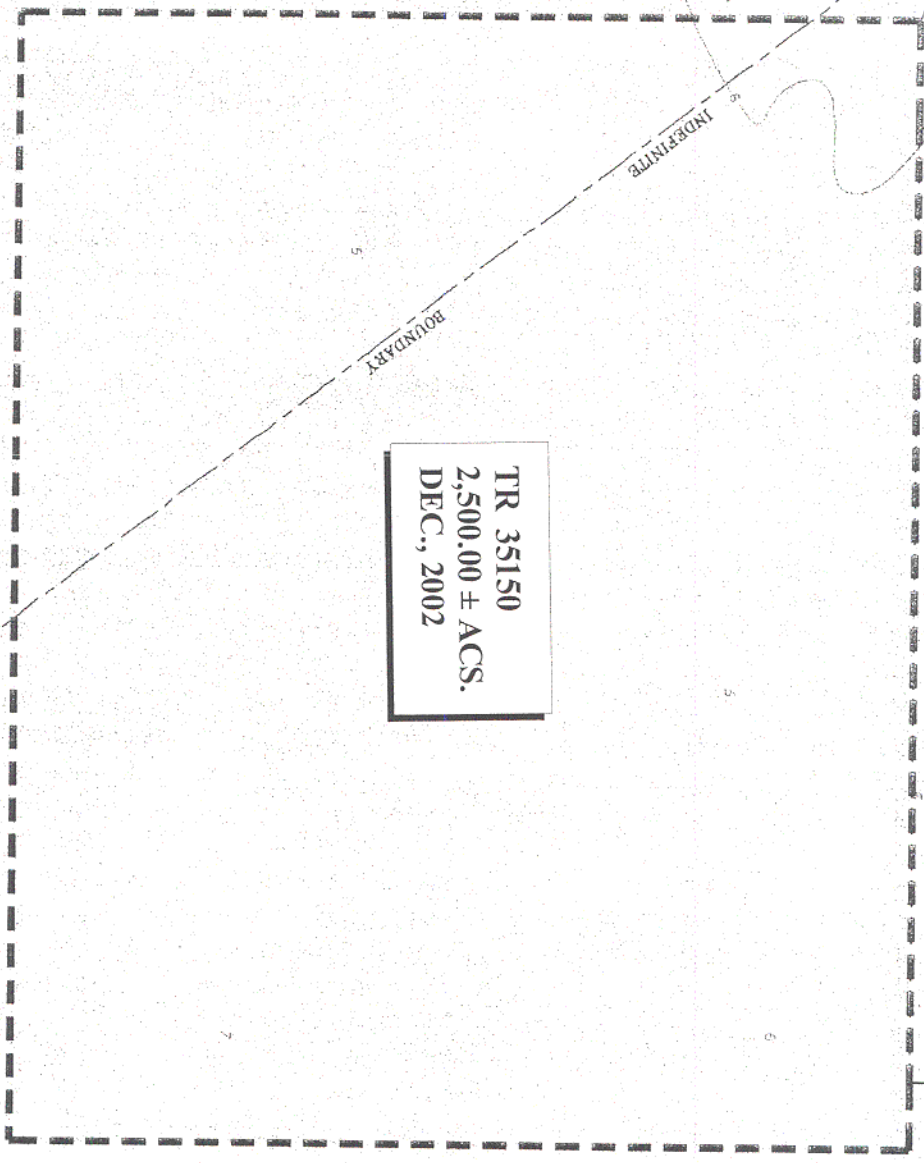
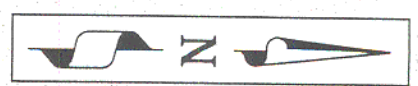
S.L. 16382

S.L. 16383

S.L. 17135

TR 35150
2,500.00 ± ACS.
DEC., 2002

ST. MARY AND IBERIA PARISHES
EAST COTE BLANCHE BAY AREA



TRACT 35151 - Iberia Parish, Louisiana

All of the lands now or formerly constituting the beds and bottoms of all water bodies of every nature and description, and all islands and other lands formed by accretion, where allowed by law, or by reliction, and excepting tax adjudicated lands, belonging to the State of Louisiana and not presently under mineral lease on December 11, 2002, situated in Iberia Parish, Louisiana, and more particularly described as follows: Beginning at a point having Coordinates of X = 1,900,000.00 and Y = 304,900.00; thence West 7,000.00 feet to a point having Coordinates of X = 1,893,000.00 and Y = 304,900.00; thence North 5,300.00 feet to a point having Coordinates of X = 1,893,000.00 and Y = 310,200.00; thence East 7,000.00 feet to a point having Coordinates of X = 1,900,000.00 and Y = 310,200.00; thence South 5,300.00 feet to the point of beginning, containing approximately **851.70 acres**, all as more particularly outlined on a plat on file in the Office of Mineral Resources, Department of Natural Resources, as provided by the applicant. All bearings, distances and coordinates are based on Louisiana Coordinate System of 1927, (North or South Zone), where applicable.

NOTE: The above description of the Tract nominated for lease has been provided and corrected, where required, exclusively by the nomination party. Any mineral lease selected from this Tract and awarded by the Louisiana State Mineral Board shall be without warranty of any kind, either express, implied, or statutory, including, but not limited to, the implied warranties of merchantability and fitness for a particular purpose. Should the mineral lease awarded by the Louisiana State Mineral Board be subsequently modified, cancelled or abrogated due to the existence of conflicting leases, operating agreements, private claims or other future obligations or conditions which may affect all or any portion of the leased Tract, it shall not relieve the Lessee of the obligation to pay any bonus due thereon to the Louisiana State Mineral Board, nor shall the Louisiana State Mineral Board be obligated to refund any consideration paid by the Lessor prior to such modification, cancellation, or abrogation, including, but not limited to, bonuses, rentals and royalties.

NOTE: The Department of Wildlife and Fisheries has designated certain areas in the coastal waters of the State of Louisiana as Oyster Seed Bed Areas. The exact location of those Seed Bed Areas must be obtained from the Department of Wildlife and Fisheries and any work done under a mineral lease from the State of Louisiana may necessarily be conducted in conformity with the rules and regulations promulgated by the said Department of Wildlife and Fisheries for Oyster Seed Bed Areas.

NOTE: The State of Louisiana does hereby reserve, and this lease shall be subject to, the imprescriptible right of surface use in the nature of a servitude in favor of the Department of Natural Resources, including its Offices and Commissions, for the sole purpose of implementing, constructing, servicing and maintaining approved coastal zone management and/or restoration projects. Utilization of any and all rights derived under this lease by the mineral lessee, its agents, successors or assigns,

shall not interfere with nor hinder the reasonable surface use by the Department of Natural Resources, its Offices or Commissions, as herein above reserved.

Applicant: C.R. Anderson

Bidder	Cash Payment	Price / Acre	Rental	Oil	Gas	Other

EAST COTE BLANCHE BAY

TR 35151
851.70 ± ACS.
DEC., 2002

S
I-100115

P.O.B.
X = 1,900,000.00
Y = 304,900.00

RSE
T185

4 | 3

NAD 1927 (South Zone)

S. L. 172284

SCALE : 1" = 2000'

IBERIA PARISH, LOUISIANA

TRACT 35152 - Assumption and St. Mary Parishes, Louisiana

All of the lands now or formerly constituting the beds and bottoms of all water bodies of every nature and description, and all islands and other lands formed by accretion, where allowed by law, or by reliction, and excepting tax adjudicated lands, belonging to the State of Louisiana and not presently under mineral lease on December 11, 2002, situated in Assumption and St. Mary Parishes, Louisiana, and more particularly described as follows: Beginning at the Northeast corner of State Lease No. 16815 having Coordinates of X = 2,079,500.00 and Y = 359,400.00; thence West 14,000.00 feet on the North line of said State Lease No. 16815 to its Northwest corner having Coordinates of X = 2,065,500.00 and Y = 359,400.00; thence North 31 degrees 39 minutes 39 seconds West 7,049.11 feet to a point having Coordinates of X = 2,061,800.00 and Y = 365,400.00; thence East 17,700.00 feet to a point having Coordinates of X = 2,079,500.00 and Y = 365,400.00; thence South 6,000.00 feet to the point of beginning, containing approximately **125 acres**, all as more particularly outlined on a plat on file in the Office of Mineral Resources, Department of Natural Resources, as provided by the applicant. All bearings, distances and coordinates are based on Louisiana Coordinate System of 1927, (North or South Zone), where applicable.

NOTE: The above description of the Tract nominated for lease has been provided and corrected, where required, exclusively by the nomination party. Any mineral lease selected from this Tract and awarded by the Louisiana State Mineral Board shall be without warranty of any kind, either express, implied, or statutory, including, but not limited to, the implied warranties of merchantability and fitness for a particular purpose. Should the mineral lease awarded by the Louisiana State Mineral Board be subsequently modified, cancelled or abrogated due to the existence of conflicting leases, operating agreements, private claims or other future obligations or conditions which may affect all or any portion of the leased Tract, it shall not relieve the Lessee of the obligation to pay any bonus due thereon to the Louisiana State Mineral Board, nor shall the Louisiana State Mineral Board be obligated to refund any consideration paid by the Lessor prior to such modification, cancellation, or abrogation, including, but not limited to, bonuses, rentals and royalties.

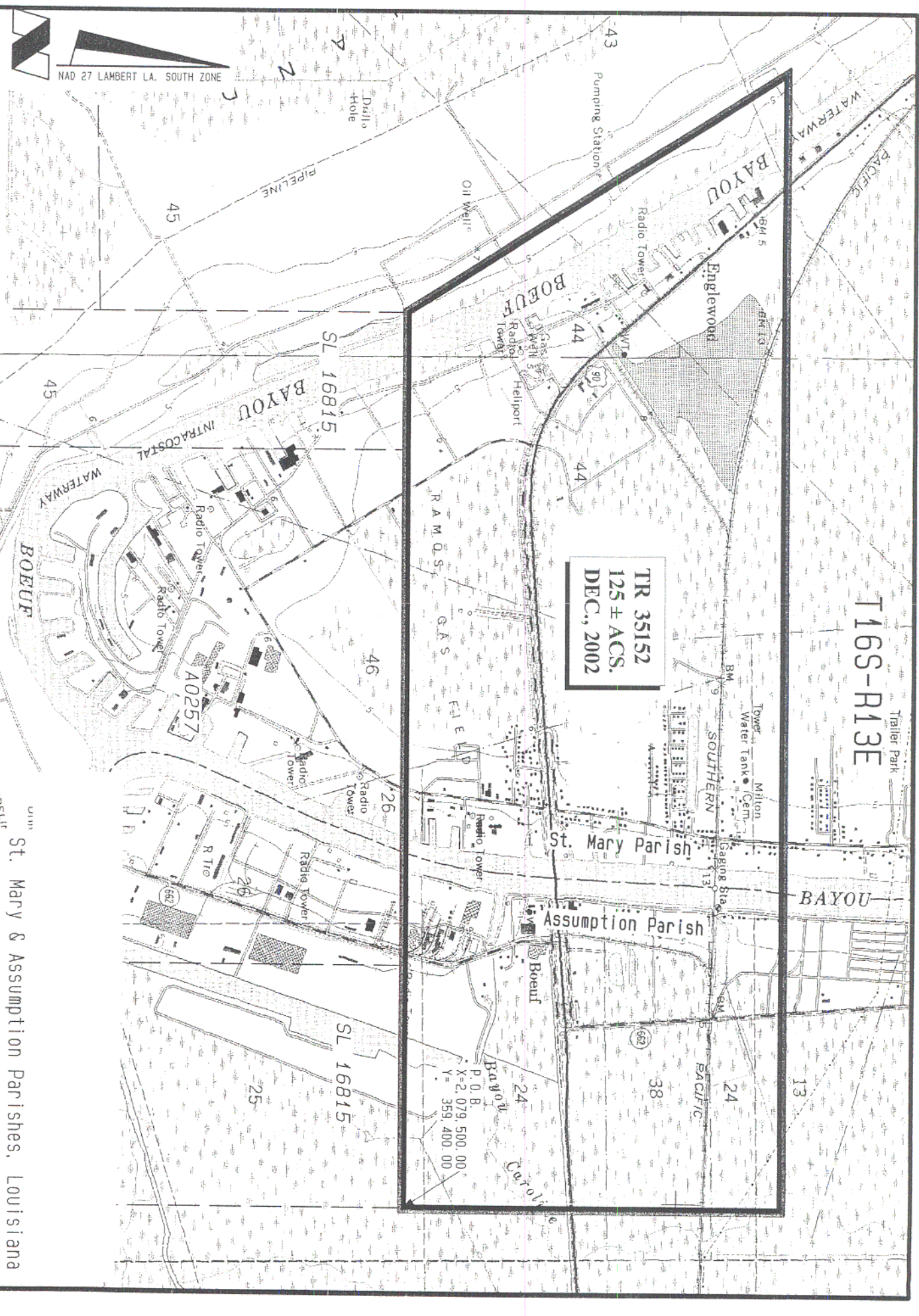
NOTE: The State of Louisiana does hereby reserve, and this lease shall be subject to, the imprescriptible right of surface use in the nature of a servitude in favor of the Department of Natural Resources, including its Offices and Commissions, for the sole purpose of implementing, constructing, servicing and maintaining approved coastal zone management and/or restoration projects. Utilization of any and all rights derived under this lease by the mineral lessee, its agents, successors or assigns, shall not interfere with nor hinder the reasonable surface use by the Department of Natural Resources, its Offices or Commissions, as herein above reserved.

Applicant: Kenneth M. Bourg

Bidder	Cash Payment	Price / Acre	Rental	Oil	Gas	Other

T16S-R13E

TR 35152
125 ± ACS.
DEC., 2002



St. Mary & Assumption Parishes, Louisiana

TRACT 35153 - Terrebonne Parish, Louisiana

All of the lands now or formerly constituting the beds and bottoms of all water bodies of every nature and description, and all islands and other lands formed by accretion, where allowed by law, or by reliction, and excepting tax adjudicated lands, belonging to the State of Louisiana and not presently under mineral lease on December 11, 2002, situated in Terrebonne Parish, Louisiana, and more particularly described as follows: Beginning at a point having Coordinates of X = 2,148,811.00 and Y = 173,981.97; thence South 89 degrees 49 minutes 07 seconds East 9,300.99 feet to a point having Coordinates of X = 2,158,111.94 and Y = 173,952.54; thence South 01 degrees 00 minutes 16 seconds East 2,892.01 feet to a point having Coordinates of X = 2,158,162.64 and Y = 171,060.97; thence South 89 degrees 55 minutes 10 seconds West 9,295.28 feet to a point having Coordinates of X = 2,148,867.36 and Y = 171,047.89; thence North 01 degrees 06 minutes 02 seconds West 2,934.62 feet to the point of beginning, containing approximately **288 acres**, all as more particularly outlined on a plat on file in the Office of Mineral Resources, Department of Natural Resources, as provided by the applicant. All bearings, distances and coordinates are based on Louisiana Coordinate System of 1927, (North or South Zone), where applicable.

NOTE: The above description of the Tract nominated for lease has been provided and corrected, where required, exclusively by the nomination party. Any mineral lease selected from this Tract and awarded by the Louisiana State Mineral Board shall be without warranty of any kind, either express, implied, or statutory, including, but not limited to, the implied warranties of merchantability and fitness for a particular purpose. Should the mineral lease awarded by the Louisiana State Mineral Board be subsequently modified, cancelled or abrogated due to the existence of conflicting leases, operating agreements, private claims or other future obligations or conditions which may affect all or any portion of the leased Tract, it shall not relieve the Lessee of the obligation to pay any bonus due thereon to the Louisiana State Mineral Board, nor shall the Louisiana State Mineral Board be obligated to refund any consideration paid by the Lessor prior to such modification, cancellation, or abrogation, including, but not limited to, bonuses, rentals and royalties.

NOTE: The Department of Wildlife and Fisheries has designated certain areas in the coastal waters of the State of Louisiana as Oyster Seed Bed Areas. The exact location of those Seed Bed Areas must be obtained from the Department of Wildlife and Fisheries and any work done under a mineral lease from the State of Louisiana may necessarily be conducted in conformity with the rules and regulations promulgated by the said Department of Wildlife and Fisheries for Oyster Seed Bed Areas.

NOTE: The State of Louisiana does hereby reserve, and this lease shall be subject to, the imprescriptible right of surface use in the nature of a servitude in favor of the Department of Natural Resources, including its Offices and Commissions, for the sole purpose of implementing, constructing, servicing and maintaining approved coastal zone management

and/or restoration projects. Utilization of any and all rights derived under this lease by the mineral lessee, its agents, successors or assigns, shall not interfere with nor hinder the reasonable surface use by the Department of Natural Resources, its Offices or Commissions, as herein above reserved.

Applicant: Louisiana Land and Exploration Company

Bidder	Cash Payment	Price / Acre	Rental	Oil	Gas	Other

S.L. 16101

GRAND PASS
DES ILETES

T 22 S - R 16 E

TERREBONNE PARISH, LOUISIANA

S.L. 16103

NOT TO SCALE

T 22 S - R 16 E
T 23 S - R 16 E

S.L. 16293

FIELD

P.O.B.

X = 2148811.00
Y = 173981.97

2934.62

NOT 0602 W

TR 35153
288 ± ACS.
DEC., 2002

X = 2148867.36
Y = 171047.88

S89°55'10"W
9295.28

X = 2158162.64
Y = 171060.97

S89°49'07"E
9300.99

Bayou

John Bay

21

28

des Ilettes

Grand pass des Ilettes

S.L. 16100

PASS

DES

PASS

DES

ILETES

GASS

FIELD

33

32

31

36

35

25

24

19

20

208

TRACT 35154 - Terrebonne Parish, Louisiana

All of the lands now or formerly constituting the beds and bottoms of all water bodies of every nature and description, and all islands and other lands formed by accretion, where allowed by law, or by reliction, and excepting tax adjudicated lands, belonging to the State of Louisiana and not presently under mineral lease on December 11, 2002, situated in Terrebonne Parish, Louisiana, and more particularly described as follows: Beginning at a point having Coordinates of X = 2,150,439.00 and Y = 167,991.30, said point also being on the East boundary of State of Louisiana - State Lease No. 16100; thence on and along the East and North boundaries of said State of Louisiana - State Lease No. 16100 the following courses and distances, to-wit: North 1,485.30 feet to a point having Coordinates of X = 2,150,439.00 and Y = 169,476.60, said point also being the Northeast corner of said State of Louisiana - State Lease No. 16100; and West 1,541.45 feet to a point having Coordinates of X = 2,148,897.55 and Y = 169,476.60; thence North 01 degrees 06 minutes 02 seconds West 1,571.58 feet to a point having Coordinates of X = 2,148,867.36 and Y = 171,047.89; thence North 89 degrees 55 minutes 10 seconds East 4,144.62 feet to a point having Coordinates of X = 2,153,011.98 and Y = 171,053.72; thence South 40 degrees 02 minutes 10 seconds West 3,999.83 feet to the point of beginning, containing approximately **62 acres**, all as more particularly outlined on a plat on file in the Office of Mineral Resources, Department of Natural Resources, as provided by the applicant. All bearings, distances and coordinates are based on Louisiana Coordinate System of 1927, (North or South Zone), where applicable.

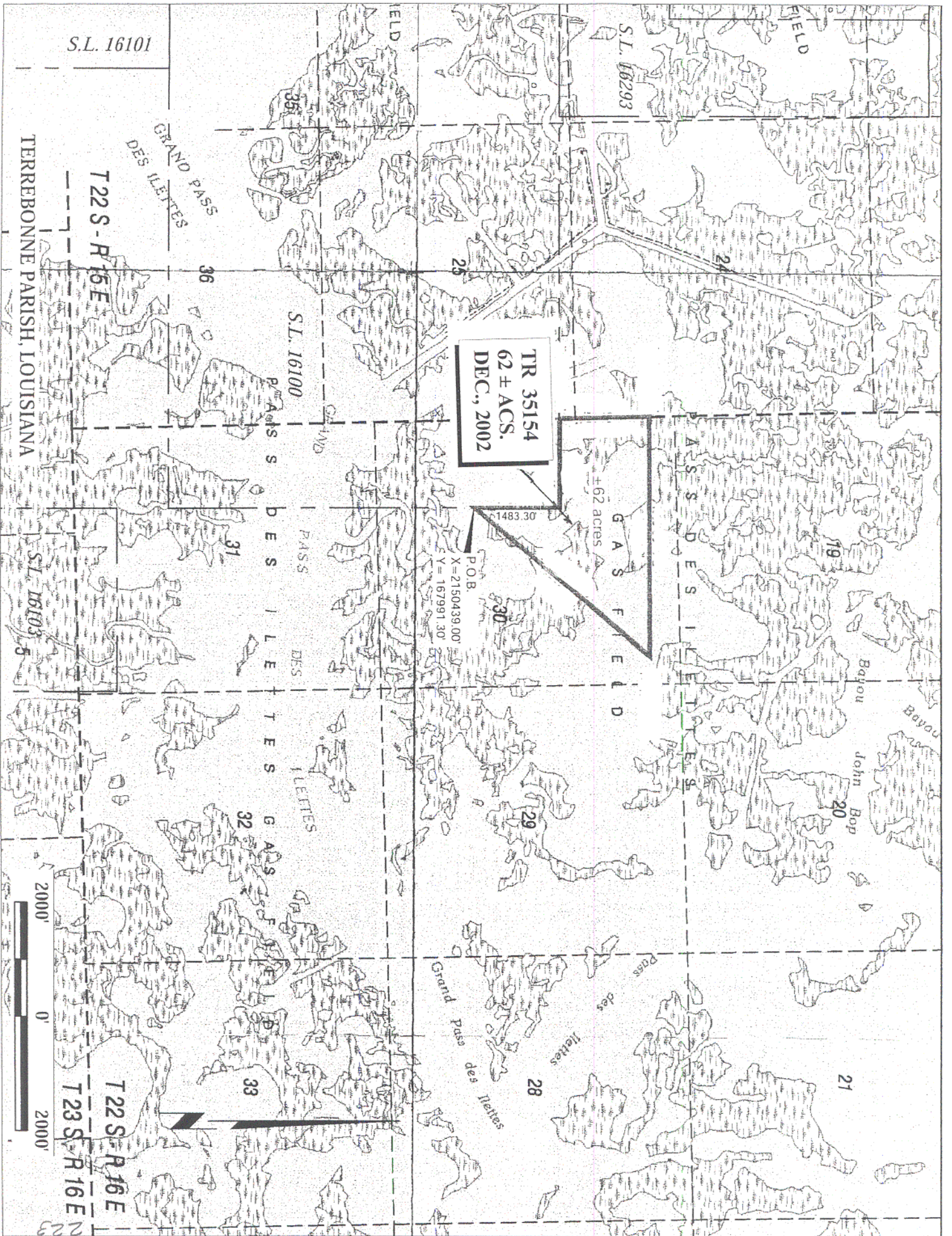
NOTE: The above description of the Tract nominated for lease has been provided and corrected, where required, exclusively by the nomination party. Any mineral lease selected from this Tract and awarded by the Louisiana State Mineral Board shall be without warranty of any kind, either express, implied, or statutory, including, but not limited to, the implied warranties of merchantability and fitness for a particular purpose. Should the mineral lease awarded by the Louisiana State Mineral Board be subsequently modified, cancelled or abrogated due to the existence of conflicting leases, operating agreements, private claims or other future obligations or conditions which may affect all or any portion of the leased Tract, it shall not relieve the Lessee of the obligation to pay any bonus due thereon to the Louisiana State Mineral Board, nor shall the Louisiana State Mineral Board be obligated to refund any consideration paid by the Lessor prior to such modification, cancellation, or abrogation, including, but not limited to, bonuses, rentals and royalties.

NOTE: The Department of Wildlife and Fisheries has designated certain areas in the coastal waters of the State of Louisiana as Oyster Seed Bed Areas. The exact location of those Seed Bed Areas must be obtained from the Department of Wildlife and Fisheries and any work done under a mineral lease from the State of Louisiana may necessarily be conducted in conformity with the rules and regulations promulgated by the said Department of Wildlife and Fisheries for Oyster Seed Bed Areas.

NOTE: The State of Louisiana does hereby reserve, and this lease shall be subject to, the imprescriptible right of surface use in the nature of a servitude in favor of the Department of Natural Resources, including its Offices and Commissions, for the sole purpose of implementing, constructing, servicing and maintaining approved coastal zone management and/or restoration projects. Utilization of any and all rights derived under this lease by the mineral lessee, its agents, successors or assigns, shall not interfere with nor hinder the reasonable surface use by the Department of Natural Resources, its Offices or Commissions, as herein above reserved.

Applicant: Louisiana Land and Exploration Company

Bidder	Cash Payment	Price / Acre	Rental	Oil	Gas	Other



TRACT 35155 - Terrebonne Parish, Louisiana

All of the lands now or formerly constituting the beds and bottoms of all water bodies of every nature and description, and all islands and other lands formed by accretion, where allowed by law, or by reliction, and excepting tax adjudicated lands, belonging to the State of Louisiana and not presently under mineral lease on December 11, 2002, situated in Terrebonne Parish, Louisiana, and more particularly described as follows: Beginning at a point having Coordinates of X = 2,190,710.28 and Y = 195,242.68; thence North 01 degrees 00 minutes 00 seconds West 6,015.82 feet to a point having Coordinates of X = 2,190,605.29 and Y = 201,257.58; thence North 88 degrees 45 minutes 52 seconds East approximately 9,673 feet to a point on the Northwest boundary of the Eastern portion of State Lease No. 15398, as amended; thence along the said Northwest boundary of the Eastern portion of State Lease No. 15398, as amended the following courses: South 46 degrees 03 minutes 39 seconds West approximately 383 feet to a point, South 50 degrees 32 minutes 34 seconds West 1,613.48 feet to a point, South 57 degrees 02 minutes 27 seconds West 1,246.32 feet to a point, South 54 degrees 54 minutes 15 seconds West 1,525.50 feet to a point, South 56 degrees 46 minutes 50 seconds West 67.16 feet to its Southwest corner, said corner also being the Northwest corner of the Western portion of State Lease No. 15785, as amended; thence along the said Northwest boundary of the Western portion of State Lease No. 15785, as amended the following courses: South 56 degrees 46 minutes 49 seconds West 373.77 feet to a point, South 62 degrees 10 minutes 21 seconds West 356.48 feet to a point, South 66 degrees 09 minutes 55 seconds West 271.12 feet to a point, South 52 degrees 04 minutes 25 seconds West 156.87 feet to a point, South 41 degrees 37 minutes 59 seconds West 771.80 feet to a point, South 44 degrees 38 minutes 48 seconds West 772.87 feet to a point, South 52 degrees 15 minutes 08 seconds West 132.25 feet to a point, South 49 degrees 06 minutes 07 seconds West 89.76 feet to its Southwest corner, said corner also being the Northeast corner of the Western portion of said State Lease No. 15398, as amended; thence along the said Northwest boundary of the Eastern portion of State Lease No. 15398, as amended, the following courses: South 49 degrees 06 minutes 07 seconds West 350.08 feet to a point, South 54 degrees 10 minutes 47 seconds West 176.63 feet to a point, South 62 degrees 41 minutes 04 seconds West 345.51 feet to a point, South 71 degrees 11 minutes 29 seconds West 280.39 feet to a point, South 60 degrees 40 minutes 52 seconds West 186.53 feet to a point, South 52 degrees 55 minutes 37 seconds West 414.79 feet to a point, South 42 degrees 35 minutes 40 seconds West 289.61 feet to a point, South 38 degrees 32 minutes 30 seconds West 188.91 feet to a point, South 32 degrees 00 minutes 17 seconds West 218.80 feet to a point; thence South 88 degrees 59 minutes 59 seconds West approximately 1,563 feet to the point of beginning, containing approximately **297 acres**, all as more particularly outlined on a plat on file in the Office of Mineral Resources, Department of Natural Resources, as provided by the applicant. All bearings, distances and coordinates are based on Louisiana Coordinate System of 1927, (North or South Zone), where applicable.

NOTE: The above description of the Tract nominated for lease has been provided and corrected, where required, exclusively by the nomination party. Any mineral lease selected from this Tract and awarded by the Louisiana State Mineral Board shall be without warranty of any kind, either express, implied, or statutory, including, but not limited to, the implied warranties of merchantability and fitness for a particular purpose. Should the mineral lease awarded by the Louisiana State Mineral Board be subsequently modified, cancelled or abrogated due to the existence of conflicting leases, operating agreements, private claims or other future obligations or conditions which may affect all or any portion of the leased Tract, it shall not relieve the Lessee of the obligation to pay any bonus due thereon to the Louisiana State Mineral Board, nor shall the Louisiana State Mineral Board be obligated to refund any consideration paid by the Lessor prior to such modification, cancellation, or abrogation, including, but not limited to, bonuses, rentals and royalties.

NOTE: The Department of Wildlife and Fisheries has designated certain areas in the coastal waters of the State of Louisiana as Oyster Seed Bed Areas. The exact location of those Seed Bed Areas must be obtained from the Department of Wildlife and Fisheries and any work done under a mineral lease from the State of Louisiana may necessarily be conducted in conformity with the rules and regulations promulgated by the said Department of Wildlife and Fisheries for Oyster Seed Bed Areas.

NOTE: The State of Louisiana does hereby reserve, and this lease shall be subject to, the imprescriptible right of surface use in the nature of a servitude in favor of the Department of Natural Resources, including its Offices and Commissions, for the sole purpose of implementing, constructing, servicing and maintaining approved coastal zone management and/or restoration projects. Utilization of any and all rights derived under this lease by the mineral lessee, its agents, successors or assigns, shall not interfere with nor hinder the reasonable surface use by the Department of Natural Resources, its Offices or Commissions, as herein above reserved.

Applicant: Cypress Energy Corporation

Bidder	Cash Payment	Price / Acre	Rental	Oil	Gas	Other

FOUR ISLE DOME
OIL AND GAS FIELD

P.O.B.
X = 2,190,710.28'
Y = 195,242.68'

TERREBONNE PARISH

Deer Bay

TR 35155
297 ± ACS.
DEC., 2002

S.L. 15398

S.L. 15785

S.L. 15398

Bay Sale

T21S-R17E
T22S-R17E

S.L. 16794

S.L. 15785

Eay Touch-me-not



Moss Bay