

SHERBURNE

TRACT

TRACT 34035 - St. Martin Parish, Louisiana

All of the lands now or formerly constituting the beds and bottoms of all water bodies of every nature and description and all islands and other lands formed by accretion or reliction, except tax lands, owned by and not under mineral lease from the State of Louisiana on December 12, 2001, situated in St. Martin Parish, Louisiana, within the following described boundaries: Beginning at a point having Coordinates of X = 1,891,400.00 and Y = 630,000.00; thence North 2,700.00 feet to a point having Coordinates of X = 1,891,400.00 and Y = 632,700.00; thence East 10,700.00 feet to a point having Coordinates of X = 1,902,100.00 and Y = 632,700.00; thence South 4,300.00 feet to a point having Coordinates of X = 1,902,100.00 and Y = 628,400.00; thence West 3,700.00 feet to a point having Coordinates of X = 1,898,400.00 and Y = 628,400.00; thence North 1,600.00 feet to a point having Coordinates of X = 1,898,400.00 and Y = 630,000.00; thence West 7,000 feet to the point of beginning, containing approximately 23 acres, as shown outlined on a plat on file in the Office of Mineral Resources, Department of Natural Resources, as provided by the applicant. All bearings, distances and coordinates are based on Louisiana Coordinate System of 1927 (South Zone).

NOTE: The above description of the tract nominated for lease has been provided exclusively by the party nominating the tract for lease. The Louisiana State Mineral Board makes no representation as to the accuracy of the description of the nominated tract or its suitability for lease. The Louisiana State Mineral Board has made no inspection of the nominated tract for the existence of conflicting leases, operating agreements, private claims or other existing or future obligations or conditions which may affect all or any portion of the nominated tract or its suitability for lease.

Maps depicting the nominated tract, containing the bearings, distances and coordinates of the nominated tract based on the Louisiana Coordinate System of 1927, North or South Zone, as applicable, are available for public inspection and review at the offices of the Louisiana State Mineral Board from 10:00 a.m. to 3:00 p.m. Monday - Friday.

In the event of conflict between the description of the nominated tract set forth above and the description of the nominated property as contained on the maps maintained at the offices of the Louisiana State Mineral Board, the Louisiana State Mineral Board maps shall prevail and shall provide the final property description of the lease to be awarded of the nominated tract.

Any mineral lease of the nominated tract by the Louisiana State Mineral Board shall be without warranty of any kind, either express, implied, or statutory, including, but not limited to, the implied warranties or merchantability and fitness for a particular purpose. Should the mineral lease of the nominated tract awarded by the Louisiana State Mineral Board be subsequently modified, cancelled or abrogated due to the existence of conflicting leases, operating agreements, private claims or other existing of future obligations or conditions which may affect all or any portion of the leased tract, it shall not relieve the Lessee of the obligation to pay any bonus due thereon to the Louisiana State Mineral Board, nor shall the Louisiana State Mineral Board be obligated to refund any consideration paid by the Lessee prior to such modification,

cancellation, or abrogation, including, but not limited to, bonuses, rents and royalties.

NOTE: This tract may be located within the Sherburne Wildlife Management Area. Any operations on said tract shall be coordinated with the Louisiana Department of Wildlife and Fisheries. Special Rules and Regulations have been promulgated by the Louisiana Department of Wildlife and Fisheries for the protection of the game and wildlife for some management areas. Any lease awarded by the Board on said tract shall be subject to any applicable Rules and Regulations of said management area. Copies of these Rules and Regulations may be obtained from the Louisiana Department of Wildlife and Fisheries through the Assistant Secretary, Office of Wildlife, upon request.

NOTE: 1. No activities will be allowed without written authorization of the Louisiana Department of Wildlife and Fisheries.

2. Proposed projects will be evaluated on a case by case basis. Modifications to proposed project features including but not limited to access routes, spoil placement, well sites, flowlines and appurtenant structures may be required by the Department of Wildlife and Fisheries.

3. Compliance with the Sherburne WMA mineral regulations will be required unless otherwise specified by the Department of Wildlife and Fisheries.

4. Compensatory mitigation will be required to offset unavoidable wetland impacts.

5. Removal of all structures, facilities and equipment will be required within 120 days of abandonment unless otherwise agreed to in writing by the Department of Wildlife and Fisheries.

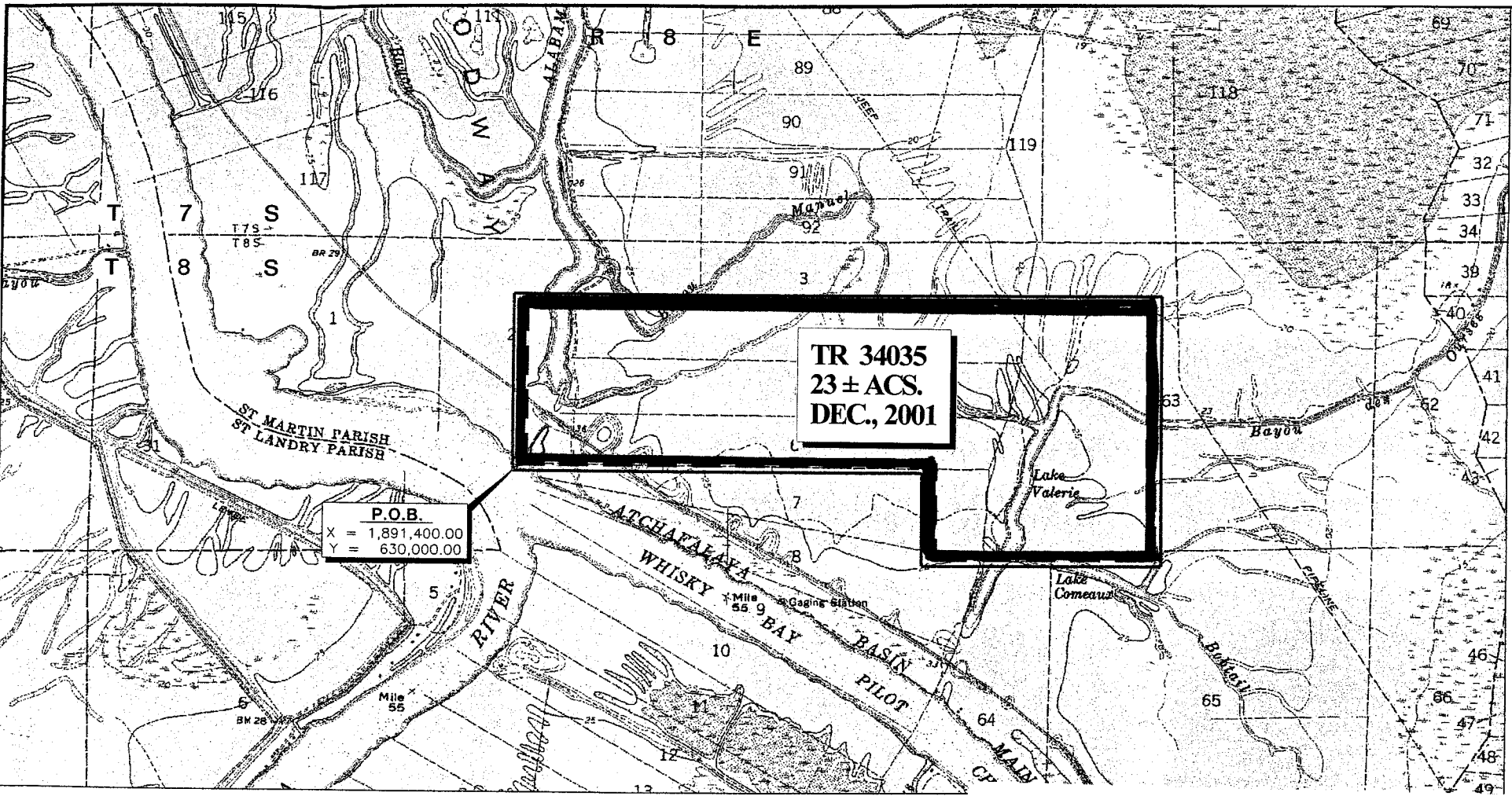
6. No activities will be allowed during the hunting season unless authorized by the Department of Wildlife and Fisheries.

7. Prior to submitting applications for wetland permits to Federal and State permitting agencies, the leaseholder shall coordinate project details with the Department of Wildlife and Fisheries. Contact person for the Department of Wildlife and Fisheries will be Jimmy Anthony (225) 765-2347.

NOTE: The Department of Wildlife and Fisheries will require a minimum bonus of \$350.00 per acre and a minimum royalty of 25%.

Applicant: E. Charles Doucet, Jr.

Bidder	Cash Payment	Price / Acre	Rental	Oil	Gas	Other



TR 34035
23 ± ACS.
DEC., 2001

P.O.B.
X = 1,891,400.00
Y = 630,000.00



ST. MARTIN PARISH, LOUISIANA
SCALE: 1" = 2000

145