

TRACT 34007 - PORTION OF BLOCK 10, SOUTH TIMBALIER AREA, REVISED, Terrebonne Parish, Louisiana

That portion of Block 10, South Timbalier Area, Revised, Terrebonne Parish, Louisiana, belonging to the State of Louisiana and not under mineral lease on December 12, 2001, described as follows: Beginning at a point at the Northwest corner of Block 10, South Timbalier Area, Revised, having Coordinates of X = 2,233,246.02 and Y = 141,553.53; thence East a distance of 15,600.00 feet to a point having Coordinates of X = 2,248,846.02 and Y = 141,553.53; thence South a distance of 2,239.12 feet to a point having Coordinates of X = 2,248,846.02 and Y = 139,314.41; thence West a distance of 15,600.00 feet to a point having Coordinates of X = 2,233,246.02 and Y = 139,314.41; thence North a distance of 2,239.12 feet to the point of beginning, containing approximately **801.89 acres**, as shown outlined on a plat on file in the Office of Mineral Resources, Department of Natural Resources, as provided by the applicant. All bearings, distances and coordinates are based on Louisiana Coordinate System of 1927 (South Zone).

NOTE: The above description of the tract nominated for lease has been provided exclusively by the party nominating the tract for lease. The Louisiana State Mineral Board makes no representation as to the accuracy of the description of the nominated tract or its suitability for lease. The Louisiana State Mineral Board has made no inspection of the nominated tract for the existence of conflicting leases, operating agreements, private claims or other existing or future obligations or conditions which may affect all or any portion of the nominated tract or its suitability for lease.

Maps depicting the nominated tract, containing the bearings, distances and coordinates of the nominated tract based on the Louisiana Coordinate System of 1927, North or South Zone, as applicable, are available for public inspection and review at the offices of the Louisiana State Mineral Board from 10:00 a.m. to 3:00 p.m. Monday - Friday.

In the event of conflict between the description of the nominated tract set forth above and the description of the nominated property as contained on the maps maintained at the offices of the Louisiana State Mineral Board, the Louisiana State Mineral Board maps shall prevail and shall provide the final property description of the lease to be awarded of the nominated tract.

Any mineral lease of the nominated tract by the Louisiana State Mineral Board shall be without warranty of any kind, either express, implied, or statutory, including, but not limited to, the implied warranties or merchantability and fitness for a particular purpose. Should the mineral lease of the nominated tract awarded by the Louisiana State Mineral Board be subsequently modified, cancelled or abrogated due to the existence of conflicting leases, operating agreements, private claims or other existing of future obligations or conditions which may affect all or any portion of the leased tract, it shall not relieve the Lessee of the obligation to pay any bonus due thereon to the Louisiana State Mineral Board, nor shall the Louisiana State Mineral Board be obligated to refund any consideration paid by the Lessee prior to such modification, cancellation, or abrogation, including, but not limited to, bonuses, rents and royalties.

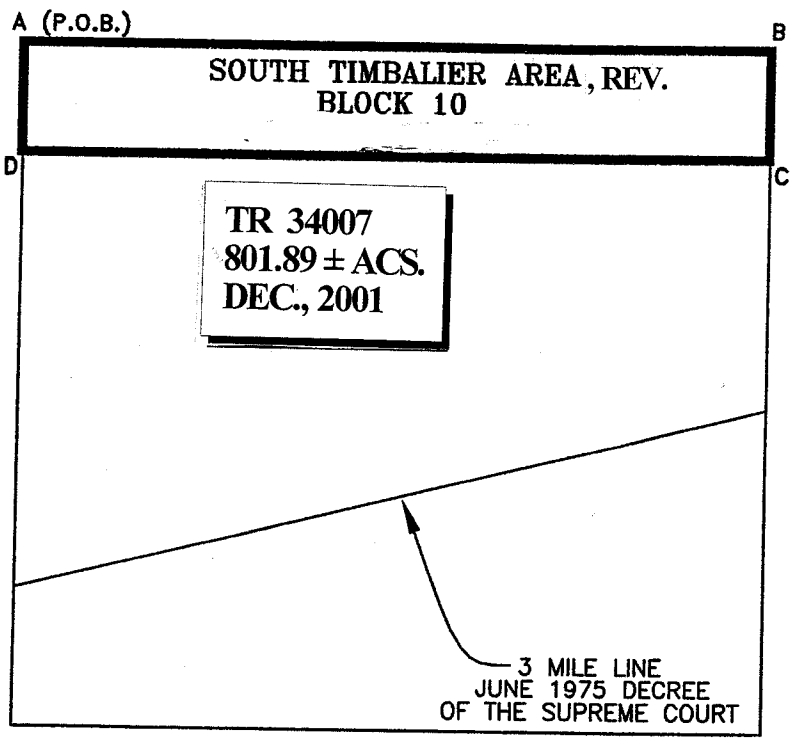
NOTE: It appears, according to our records, that a portion of this tract is located within the restrictive safety fairway area as set out by the Corps of Engineers, U.S. Army.

NOTE: The State of Louisiana does hereby reserve, and this lease shall be subject to, the imprescriptible right of surface use in the nature of a servitude in favor of the Department of Natural Resources, including its Offices and Commissions, for the sole purpose of implementing, constructing, servicing and maintaining approved coastal zone management and/or restoration projects. Utilization of any and all rights derived under this lease by the mineral lessee, its agents, successors or assigns, shall not interfere with nor hinder the reasonable surface use by the Department of Natural Resources, its Offices or Commissions, as hereinabove reserved.

Applicant: G.K. Grady

Bidder	Cash Payment	Price / Acre	Rental	Oil	Gas	Other

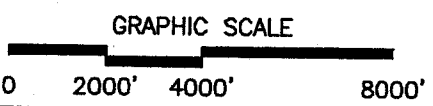
LOUISIANA COORDINATE SYSTEM
(1927 SOUTH ZONE)



NAD 27
 A-B EAST-15600.00'
 B-C SOUTH-2239.12'
 C-D WEST-15600.00'
 D-A NORTH-2239.12'

GULF OF MEXICO

NAD 27		NAD 83	
A	X=2233246.02 Y=141553.53	A	X=3514045.51 Y=202259.22
B	X=2248846.02 Y=141553.53		
C	X=2248846.02 Y=139314.41		
D	X=2233246.02 Y=139314.41		



NOTE: UNLESS OTHERWISE NOTED
COORDINATES ARE BASED ON NAD27.

NOTE:
NAD83 COORDINATES WERE CONVERTED
TO/FROM NAD27 COORDINATES USING THE
CORPSCON SOFTWARE FROM THE U.S.
ARMY TOPOGRAPHIC ENGINEERING CENTER.

801.89 ACRES: AREA OF INTEREST
 BLOCK 10, SOUTH TIMBALIER AREA, REV.
 GULF OF MEXICO
 TERREBONNE PARISH, LOUISIANA

SCALE: 1"=4000'

TRACT 34008 - PORTION OF BLOCK 10, SOUTH TIMBALIER AREA, REVISED, Terrebonne Parish, Louisiana

That portion of Block 10, South Timbalier Area, Revised, Terrebonne Parish, Louisiana, belonging to the State of Louisiana and not under mineral lease on December 12, 2001, described as follows: Beginning at a point on the West line of Block 10, South Timbalier Area, Revised, having Coordinates of X = 2,233,246.02 and Y = 139,314.41; thence East a distance of 15,600.00 feet to a point having Coordinates of X = 2,248,846.02 and Y = 139,314.41; thence South a distance of 5,077.08 feet to a point having Coordinates of X = 2,248,846.02 and Y = 134,237.33; thence South 76 degrees 17 minutes 04 seconds West a distance of 16,057.90 feet to a point having Coordinates of X = 2,233,246.02 and Y = 130,429.96; thence North a distance of 8,884.45 feet to the point of beginning, containing approximately 2,500.00 acres, as shown outlined on a plat on file in the Office of Mineral Resources, Department of Natural Resources, as provided by the applicant, **LESS AND EXCEPT** that portion thereof, if any, which is more than three nautical miles from the coast line as determined by the Report of the Special Master in the litigation in the Supreme Court of the United States styled United States v. State of Louisiana et al No. 9 Original, said three mile line as set out in the June, 1975, decree of the Supreme Court. All bearings, distances and coordinates are based on Louisiana Coordinate System of 1927 (South Zone).

NOTE: The above description of the tract nominated for lease has been provided exclusively by the party nominating the tract for lease. The Louisiana State Mineral Board makes no representation as to the accuracy of the description of the nominated tract or its suitability for lease. The Louisiana State Mineral Board has made no inspection of the nominated tract for the existence of conflicting leases, operating agreements, private claims or other existing or future obligations or conditions which may affect all or any portion of the nominated tract or its suitability for lease.

Maps depicting the nominated tract, containing the bearings, distances and coordinates of the nominated tract based on the Louisiana Coordinate System of 1927, North or South Zone, as applicable, are available for public inspection and review at the offices of the Louisiana State Mineral Board from 10:00 a.m. to 3:00 p.m. Monday - Friday.

In the event of conflict between the description of the nominated tract set forth above and the description of the nominated property as contained on the maps maintained at the offices of the Louisiana State Mineral Board, the Louisiana State Mineral Board maps shall prevail and shall provide the final property description of the lease to be awarded of the nominated tract.

Any mineral lease of the nominated tract by the Louisiana State Mineral Board shall be without warranty of any kind, either express, implied, or statutory, including, but not limited to, the implied warranties or merchantability and fitness for a particular purpose. Should the mineral lease of the nominated tract awarded by the Louisiana State Mineral Board be subsequently modified, cancelled or abrogated due to the existence of conflicting leases, operating agreements, private claims or other existing of future obligations or conditions which may affect all or any portion of the leased tract, it shall not relieve the Lessee of the obligation to pay any

bonus due thereon to the Louisiana State Mineral Board, nor shall the Louisiana State Mineral Board be obligated to refund any consideration paid by the Lessee prior to such modification, cancellation, or abrogation, including, but not limited to, bonuses, rents and royalties.

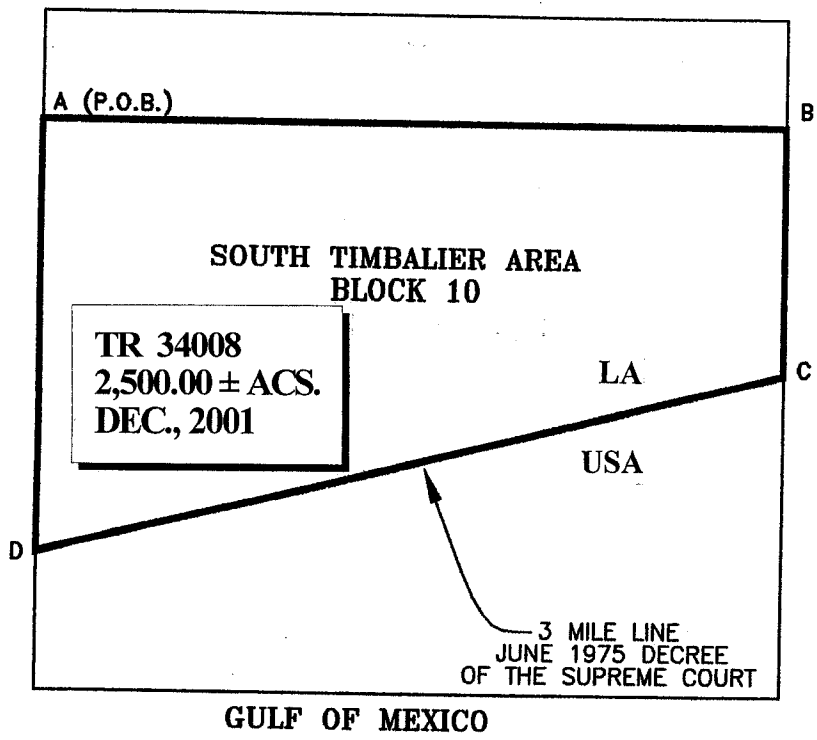
NOTE: It appears, according to our records, that a portion of this tract is located within the restrictive safety fairway area as set out by the Corps of Engineers, U.S. Army.

NOTE: The State of Louisiana does hereby reserve, and this lease shall be subject to, the imprescriptible right of surface use in the nature of a servitude in favor of the Department of Natural Resources, including its Offices and Commissions, for the sole purpose of implementing, constructing, servicing and maintaining approved coastal zone management and/or restoration projects. Utilization of any and all rights derived under this lease by the mineral lessee, its agents, successors or assigns, shall not interfere with nor hinder the reasonable surface use by the Department of Natural Resources, its Offices or Commissions, as hereinabove reserved.

Applicant: G.K. Grady

Bidder	Cash Payment	Price / Acre	Rental	Oil	Gas	Other

LOUISIANA COORDINATE SYSTEM
(1927 SOUTH ZONE)



NAD 27

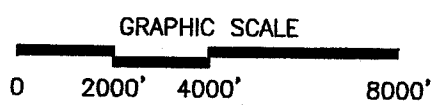
A-B EAST-15600.00'

B-C SOUTH-5077.08'

C-D S76°17'04"W-16057.90'

D-A NORTH-8884.45'

NAD 27		NAD 83	
A	X=2233246.02 Y=139314.41	A	X=3514045.48 Y=200020.09
B	X=2248846.02 Y=139314.41		
C	X=2248846.02 Y=134237.33		
D	X=2233246.02 Y=130429.96		



NOTE: UNLESS OTHERWISE NOTED
COORDINATES ARE BASED ON NAD27.

NOTE:
NAD83 COORDINATES WERE CONVERTED
TO/FROM NAD27 COORDINATES USING THE
CORPSCON SOFTWARE FROM THE U.S.
ARMY TOPOGRAPHIC ENGINEERING CENTER.

2500.00 ACRES; AREA OF INTEREST

BLOCK 10, SOUTH TIMBALIER AREA

GULF OF MEXICO

TERREBONNE PARISH, LOUISIANA

	SCALE: 1"=4000'