

TRACT 34005 - PORTION OF BLOCK 8, SOUTH TIMBALIER AREA, REVISED, Terrebonne Parish, Louisiana

That portion of Block 8, South Timbalier Area, Revised, Terrebonne Parish, Louisiana, belonging to the State of Louisiana and not under mineral lease on December 12, 2001, described as follows: Beginning at a point on the Southwest corner of Block 8, South Timbalier Area, Revised, having Coordinates of X = 2,202,046.02 and Y = 127,591.99; thence North a distance of 12,091.34 feet to a point on the shoreline used to set out the 3 mile line in the 1975 decree of the Supreme Court having Coordinates of X = 2,202,046.02 and Y = 139,683.33; thence North 72 degrees 41 minutes 44 seconds East a distance of 3,004.82 feet to a point having Coordinates of X = 2,204,914.84 and Y = 140,577.11; thence East a distance of 10,682.09 feet to a point on the Northwesterly line of State Lease No. 16673 having Coordinates of X = 2,215,596.93 and Y = 140,577.11; thence South 64 degrees 31 minutes 18 seconds West a distance of 7,090.47 feet to a point having Coordinates of X = 2,209,196.02 and Y = 137,527.00; thence South along the West line of State Lease No. 16673 and State Lease No. 14905 a distance of 8,198.39 feet to a point at the Southwest corner of State Lease No. 14905 a distance of 8,198.39 feet to a point at the Southwest corner of State Lease No. 14905 having Coordinates of X = 2,209,196.02 and Y = 129,328.61; thence East a distance of 2,607.14 feet to a point common to State Lease No. 14905 and State Lease No. 4239 having Coordinates of X = 2,211,803.16 and Y = 129,328.61; thence South 74 degrees 18 minutes 37 seconds East a distance of 1,695.82 feet to a point having Coordinates of X = 2,213,435.80 and Y = 128,870.01; thence East a distance of 460.22 feet to a point common to State Lease No. 4237 and State Lease No. 14431 having Coordinates of X = 2,213,896 and Y = 128,870.01; thence South a distance of 1,278.02 feet to a point on the South line of said Block 8 having Coordinates of X = 2,213,896.02 and Y = 127,591.99; thence West a distance of 11,850.00 feet to the point of beginning, containing approximately 2,500.00 acres, as shown outlined on a plat on file in the Office of Mineral Resources, Department of Natural Resources, as provided by the applicant. All bearings, distances and coordinates are based on Louisiana Coordinate System of 1927 (South Zone).

NOTE: The above description of the tract nominated for lease has been provided exclusively by the party nominating the tract for lease. The Louisiana State Mineral Board makes no representation as to the accuracy of the description of the nominated tract or its suitability for lease. The Louisiana State Mineral Board has made no inspection of the nominated tract for the existence of conflicting leases, operating agreements, private claims or other existing or future obligations or conditions which may affect all or any portion of the nominated tract or its suitability for lease.

Maps depicting the nominated tract, containing the bearings, distances and coordinates of the nominated tract based on the Louisiana Coordinate System of 1927, North or South Zone, as applicable, are available for public inspection and review at the offices of the Louisiana State Mineral Board from 10:00 a.m. to 3:00 p.m. Monday - Friday.

In the event of conflict between the description of the nominated tract set forth above and the description of the nominated property as contained on the maps maintained at the offices of the Louisiana State Mineral Board, the Louisiana State Mineral Board maps shall

prevail and shall provide the final property description of the lease to be awarded of the nominated tract.

Any mineral lease of the nominated tract by the Louisiana State Mineral Board shall be without warranty of any kind, either express, implied, or statutory, including, but not limited to, the implied warranties or merchantability and fitness for a particular purpose. Should the mineral lease of the nominated tract awarded by the Louisiana State Mineral Board be subsequently modified, cancelled or abrogated due to the existence of conflicting leases, operating agreements, private claims or other existing of future obligations or conditions which may affect all or any portion of the leased tract, it shall not relieve the Lessee of the obligation to pay any bonus due thereon to the Louisiana State Mineral Board, nor shall the Louisiana State Mineral Board be obligated to refund any consideration paid by the Lessee prior to such modification, cancellation, or abrogation, including, but not limited to, bonuses, rents and royalties.

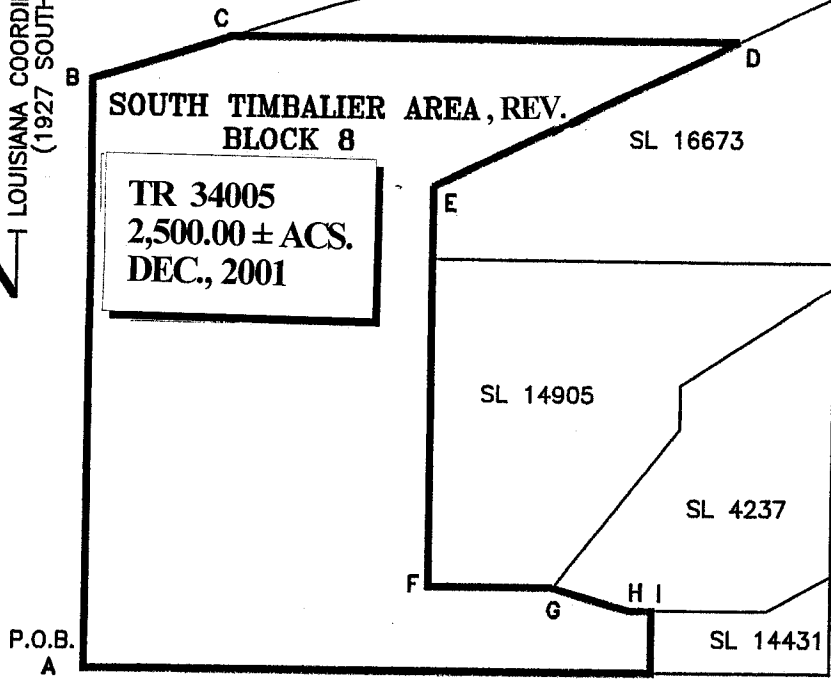
NOTE: The above tract is located in or near an oyster restricted area and all operations in such area must be conducted in strict conformity with the stipulations and/or regulations of the Louisiana Department of Wildlife and Fisheries.

NOTE: The State of Louisiana does hereby reserve, and this lease shall be subject to, the imprescriptible right of surface use in the nature of a servitude in favor of the Department of Natural Resources, including its Offices and Commissions, for the sole purpose of implementing, constructing, servicing and maintaining approved coastal zone management and/or restoration projects. Utilization of any and all rights derived under this lease by the mineral lessee, its agents, successors or assigns, shall not interfere with nor hinder the reasonable surface use by the Department of Natural Resources, its Offices or Commissions, as hereinabove reserved.

Applicant: G.K. Grady

Bidder	Cash Payment	Price / Acre	Rental	Oil	Gas	Other

LOUISIANA COORDINATE SYSTEM
(1927 SOUTH ZONE)



COURSES

- A-B NORTH-12091.34'
- B-C N72°41'44"E-3004.82'
- C-D EAST-10682.09'
- D-E S64°31'18"W-7090.47'
- E-F SOUTH-8198.39'
- F-G EAST-2607.14'
- G-H S74°18'37"E-1695.82'
- H-I EAST-460.22'
- I-J SOUTH-1278.02'
- J-A WEST-11850.00'

GULF OF MEXICO

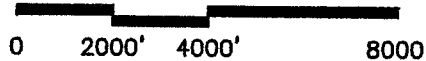
NAD 27

A	X=2202046.02	Y=127591.99	F	X=2209196.02	Y=129328.61
B	X=2202046.02	Y=139683.33	G	X=2211803.16	Y=129328.61
C	X=2204914.84	Y=140577.11	H	X=2213435.80	Y=128870.01
D	X=2215596.93	Y=140577.11	I	X=2213896.02	Y=128870.01
E	X=2209196.02	Y=137527.00	J	X=2213896.02	Y=127591.99

NAD 83

A	X=3482845.45	Y=188297.98
---	--------------	-------------

GRAPHIC SCALE



NOTE: UNLESS OTHERWISE NOTED
COORDINATES ARE BASED ON NAD27.

NOTE:
NAD83 COORDINATES WERE CONVERTED
TO/FROM NAD27 COORDINATES USING THE
CORPSCON SOFTWARE FROM THE U.S.
ARMY TOPOGRAPHIC ENGINEERING CENTER.

2500.00 ACRES; AREA OF INTEREST

**BLOCK 8, SOUTH TIMBALIER AREA, REV.
GULF OF MEXICO
TERREBONNE PARISH, LOUISIANA**

SCALE: 1"=4000'

TRACT 34006 - PORTION OF BLOCK 9, SOUTH TIMBALIER AREA, REVISED, Terrebonne Parish, Louisiana

That portion of Block 9, South Timbalier Area, Revised, Terrebonne Parish, Louisiana, belonging to the State of Louisiana and not under mineral lease on December 12, 2001, described as follows: Beginning at a point at the Southeast corner of Block 9, South Timbalier Area, Revised, having Coordinates of X = 2,233,246.02 and Y = 130,429.96; thence Southwesterly along 3 mile line as set up in the June, 1975, decree of the Supreme Court the following courses: South 76 degrees 17 minutes 04 seconds West a distance of 3,344.39 feet to a point having Coordinates of X = 2,229,997.00 and Y = 129,637.00; thence South 62 degrees 42 minutes 39 seconds West a distance of 1,910.65 feet to a point having Coordinates of X = 2,228,299.00 and Y = 128,761.00; thence South 64 degrees 10 minutes 57 seconds West a distance of 925.36 feet to a point having Coordinates of X = 2,227,466.00 and Y = 128,358.00; thence South 65 degrees 36 minutes 51 seconds West a distance of 1,855.28 feet to a point having Coordinates of X = 2,225,776.24 and Y = 127,591.99; thence West a distance of 8,130.22 feet to a point having Coordinates of X = 2,217,646.02 and Y = 127,591.99; thence North a distance of 2,023.56 feet to a point having Coordinates of X = 2,217,646.02 and Y = 129,615.55; thence North 61 degrees 11 minutes 52 seconds East a distance of 797.96 feet to a point having Coordinates of X = 2,218,345.26 and Y = 130,000.00; thence East a distance of 7,950.08 feet to a point having Coordinates of X = 2,226,295.33 and Y = 130,000.00; thence North a distance of 2,371.05 feet to a point having Coordinates of X = 2,226,295.33 and Y = 132,371.05; thence East a distance of 4,476.39 feet to a point having Coordinates of X = 2,230,771.72 and Y = 132,371.05; thence North a distance of 9,182.48 feet to a point having Coordinates of X = 2,230,771.72 and Y = 141,553.53; thence East a distance of 2,474.30 feet to the point having Coordinates of X = 2,233,246.02 and Y = 141,553.53; thence South a distance of 11,123.57 feet to the point of beginning, containing approximately **1,481.10 acres**, as shown outlined on a plat on file in the Office of Mineral Resources, Department of Natural Resources, as provided by the applicant, **LESS AND EXCEPT** that portion thereof, if any, which is more than three nautical miles from the coast line as determined by the Report of the Special Master in the litigation in the Supreme Court of the United States styled United States v. State of Louisiana et al No. 9 Original, said three mile line as set out in the June, 1975, decree of the Supreme Court. All bearings, distances and coordinates are based on Louisiana Coordinate System of 1927 (South Zone).

NOTE: The above description of the tract nominated for lease has been provided exclusively by the party nominating the tract for lease. The Louisiana State Mineral Board makes no representation as to the accuracy of the description of the nominated tract or its suitability for lease. The Louisiana State Mineral Board has made no inspection of the nominated tract for the existence of conflicting leases, operating agreements, private claims or other existing or future obligations or conditions which may affect all or any portion of the nominated tract or its suitability for lease.

Maps depicting the nominated tract, containing the bearings, distances and coordinates of the nominated tract based on the Louisiana Coordinate System of 1927, North or South Zone, as applicable, are available for public inspection and review at the

offices of the Louisiana State Mineral Board from 10:00 a.m. to 3:00 p.m. Monday - Friday.

In the event of conflict between the description of the nominated tract set forth above and the description of the nominated property as contained on the maps maintained at the offices of the Louisiana State Mineral Board, the Louisiana State Mineral Board maps shall prevail and shall provide the final property description of the lease to be awarded of the nominated tract.

Any mineral lease of the nominated tract by the Louisiana State Mineral Board shall be without warranty of any kind, either express, implied, or statutory, including, but not limited to, the implied warranties or merchantability and fitness for a particular purpose. Should the mineral lease of the nominated tract awarded by the Louisiana State Mineral Board be subsequently modified, cancelled or abrogated due to the existence of conflicting leases, operating agreements, private claims or other existing or future obligations or conditions which may affect all or any portion of the leased tract, it shall not relieve the Lessee of the obligation to pay any bonus due thereon to the Louisiana State Mineral Board, nor shall the Louisiana State Mineral Board be obligated to refund any consideration paid by the Lessee prior to such modification, cancellation, or abrogation, including, but not limited to, bonuses, rents and royalties.

NOTE: The State of Louisiana does hereby reserve, and this lease shall be subject to, the imprescriptible right of surface use in the nature of a servitude in favor of the Department of Natural Resources, including its Offices and Commissions, for the sole purpose of implementing, constructing, servicing and maintaining approved coastal zone management and/or restoration projects. Utilization of any and all rights derived under this lease by the mineral lessee, its agents, successors or assigns, shall not interfere with nor hinder the reasonable surface use by the Department of Natural Resources, its Offices or Commissions, as hereinabove reserved.

Applicant: G.K. Grady

Bidder	Cash Payment	Price / Acre	Rental	Oil	Gas	Other

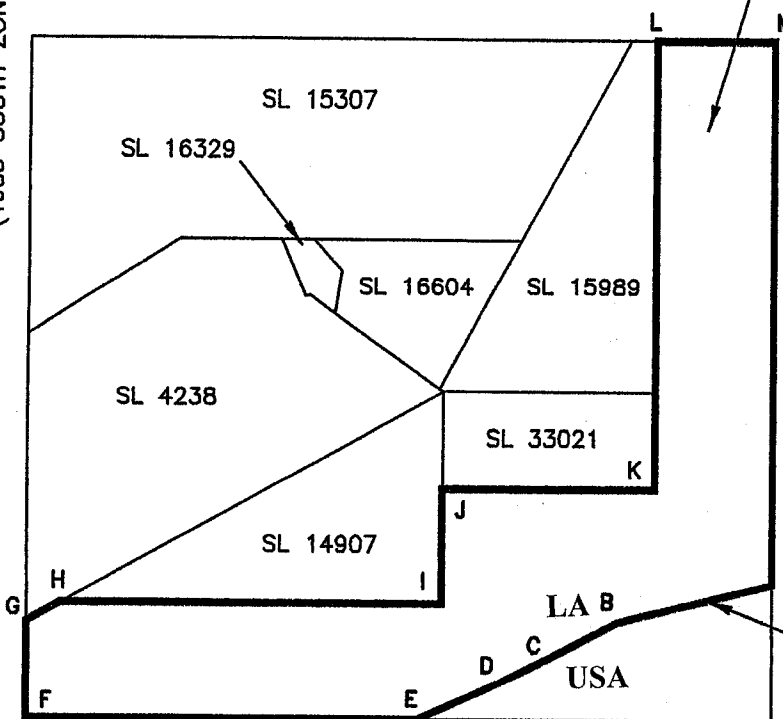
**SOUTH TIMBALIER AREA, REV.
BLOCK 9**

**TR 34006
1,481.10 ± ACS.
DEC., 2001**

COURSES:

- A-B S76°17'04"W-3344.39'
- B-C S62°42'39"W-1910.65'
- C-D S64°10'57"W-925.36'
- D-E S65°36'51"W-1855.28'
- E-F WEST-8130.22'
- F-G NORTH-2023.56'
- G-H N61°11'52"E-797.96'
- H-I NORTH-7950.08'
- I-J NORTH-2371.05'
- J-K EAST-4476.39'
- K-L NORTH-9182.48'
- L-M EAST-2474.30'
- M-A SOUTH-11123.57'

LOUISIANA COORDINATE SYSTEM
(1983 SOUTH ZONE)

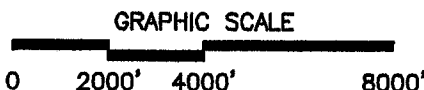


GULF OF MEXICO

NAD 27			
A	X=2233246.02	Y=130429.96	K X=2230771.72 Y=132371.05
B	X=2229997.00	Y=129637.00	L X=2230771.72 Y=141553.53
C	X=2228299.00	Y=128761.00	M X=2233246.02 Y=141553.53
D	X=2227466.00	Y=128358.00	
E	X=2225776.24	Y=127591.99	
F	X=2217646.02	Y=127591.99	
G	X=2217646.02	Y=129615.55	
H	X=2218345.26	Y=130000.00	
I	X=2226295.33	Y=130000.00	
J	X=2226295.33	Y=132371.05	

NAD 83	
A	X=3514045.37 Y=191135.61

NOTE: UNLESS OTHERWISE NOTED
COORDINATES ARE BASED ON NAD27.



NOTE:
NAD83 COORDINATES WERE CONVERTED
TO/FROM NAD27 COORDINATES USING THE
CORPSON SOFTWARE FROM THE U.S.
ARMY TOPOGRAPHIC ENGINEERING CENTER.

1481.10 ACRES; AREA OF INTEREST

**BLOCK 9, SOUTH TIMBALIER AREA, REV.
GULF OF MEXICO
TERREBONNE PARISH, LOUISIANA**

SCALE: 1"=4000'