

tract, it shall not relieve the Lessee of the obligation to pay any bonus due thereon to the Louisiana State Mineral Board, nor shall the Louisiana State Mineral Board be obligated to refund any consideration paid by the Lessee prior to such modification, cancellation, or abrogation, including, but not limited to, bonuses, rents and royalties.

NOTE: The above tract is located in or near an oyster restricted area and all operations in such area must be conducted in strict conformity with the stipulations and/or regulations of the Louisiana Department of Wildlife and Fisheries.

NOTE: The State of Louisiana does hereby reserve, and this lease shall be subject to, the imprescriptible right of surface use in the nature of a servitude in favor of the Department of Natural Resources, including its Offices and Commissions, for the sole purpose of implementing, constructing, servicing and maintaining approved coastal zone management and/or restoration projects. Utilization of any and all rights derived under this lease by the mineral lessee, its agents, successors or assigns, shall not interfere with nor hinder the reasonable surface use by the Department of Natural Resources, its Offices or Commissions, as hereinabove reserved.

Applicant: G.K. Grady

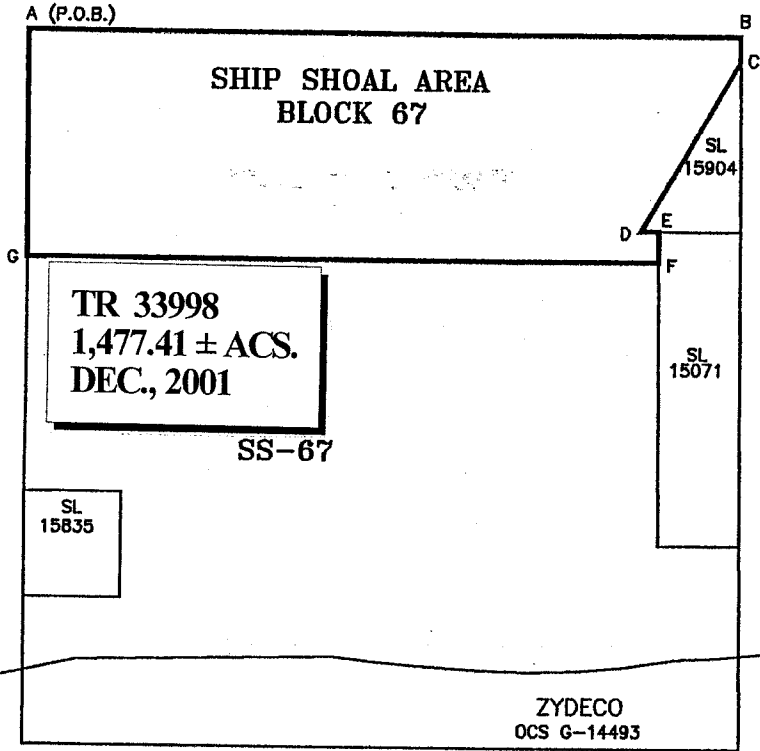
Bidder	Cash Payment	Price / Acre	Rental	Oil	Gas	Other

# GULF OF MEXICO

LOUISIANA COORDINATE SYSTEM  
(1927 SOUTH ZONE)



3 MILE LINE  
AS SET OUT  
IN THE  
JUNE, 1975,  
DECREE OF  
SUPREME  
COURT



### COURSES:

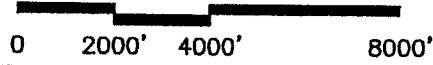
A-B	EAST	14854.40'
B-C	S00°17'20"E	512.69'
C-D	S30°32'04"W	4048.73'
D-E	N89°59'54"E	374.73'
E-F	S00°17'30"E	646.33'
F-G	WEST	13178.02'
G-A	NORTH	4646.27'

NAD 27

NAD 83

A	X=2171600.00	Y=130197.44	A	X=3452399.76	Y=190903.31
B	X=2186454.40	Y=130197.44			
C	X=2186456.98	Y=129684.76			
D	X=2184400.00	Y=126197.49			
E	X=2184774.73	Y=126197.50			
F	X=2184778.02	Y=125551.18			
G	X=2171600.00	Y=125551.18			

### GRAPHIC SCALE



NOTE: UNLESS OTHERWISE NOTED  
COORDINATES ARE BASED ON NAD27.

NOTE:  
NAD83 COORDINATES WERE CONVERTED  
TO/FROM NAD27 COORDINATES USING THE  
CORPSCON SOFTWARE FROM THE U.S.  
ARMY TOPOGRAPHIC ENGINEERING CENTER.

1477.41 ACRES; AREA OF INTEREST

BLOCK 67, SHIP SHOAL AREA  
GULF OF MEXICO  
TERREBONNE PARISH, LOUISIANA

SCALE: 1"=4000'

**TRACT 33999 - PORTION OF BLOCK 67, SHIP SHOAL AREA, Terrebonne Parish, Louisiana**

That portion of Block 67, Ship Shoal Area, Terrebonne Parish, Louisiana, belonging to the State of Louisiana and not under mineral lease on December 12, 2001, described as follows: Beginning at a point on the West line of Block 67, Ship Shoal Area, having Coordinates of X = 2,171,600.00 and Y = 125,551.18; thence East a distance of 13,178.02 feet to a point having Coordinates of X = 2,184,778.02 and Y = 125,551.18; thence South 00 degrees 17 minutes 30 seconds East a distance of 5,853.81 feet to a point having Coordinates of X = 2,184,807.82 and Y = 119,697.44; thence East a distance of 1,700.03 feet to a point having Coordinates of X = 2,186,507.85 and Y = 119,697.44; thence South 00 degrees 17 minutes 30 seconds East a distance of 2,244.91 feet to the 3 mile line as set out in the June, 1975, decree of the Supreme Court; thence along said 3 mile line the following courses: Southwesterly along a curve to the right having a radius of 18,240.60 feet and a radius point having Coordinates of X = 2,184,789.06 and Y = 135,610.91 to a point having Coordinates of X = 2,185,156.00 and Y = 117,374.00; thence Southwesterly along a curve to the right having a radius of 18,240.60 feet and a radius point having Coordinates of X = 2,182,168.46 and Y = 135,368.28 to a point having Coordinates of X = 2,181,100.00 and Y = 117,159.00; thence North 86 degrees 39 minutes 04 seconds West a distance of 1,523.60 feet to a point having Coordinates of X = 2,179,579.00 and Y = 117,248.00; thence Northwesterly along a curve to the right having a radius of 18,240.60 feet and a radius point having Coordinates of X = 2,180,637.11 and Y = 135,457.88 to a point having Coordinates of X = 2,177,979.00 and Y = 117,412.00; thence South 88 degrees 52 minutes 17 seconds West a distance of 5,280.02 feet to a point having Coordinates of X = 2,172,700.00 and Y = 117,308.00; thence South 77 degrees 59 minutes 23 seconds West a distance of 1,124.62 feet to a point on the West line of said Block 67 having Coordinates of X = 2,171,600.00 and Y = 117,073.98; thence North a distance of 1,497.79 feet to a point having Coordinates of X = 2,171,600.00 and Y = 118,571.77; thence East a distance of 2,000.00 feet to a point having Coordinates of X = 2,173,600.00 and Y = 118,571.77; thence North a distance of 2,152.21 feet to a point having Coordinates of X = 2,173,600.00 and Y = 120,723.98; thence West a distance of 2,000.00 feet to a point having Coordinates of X = 2,171,600.00 and Y = 120,723.98; thence North a distance of 4,827.20 feet to the point of beginning, containing approximately 2,500.00 acres, as shown outlined on a plat on file in the Office of Mineral Resources, Department of Natural Resources, as provided by the applicant, **LESS AND EXCEPT** that portion thereof, if any, which is more than three nautical miles from the coast line as determined by the Report of the Special Master in the litigation in the Supreme Court of the United States styled United States v. State of Louisiana et al No. 9 Original, said three mile line as set out in the June, 1975, decree of the Supreme Court. All bearings, distances and coordinates are based on Louisiana Coordinate System of 1927 (South Zone).

NOTE: The above description of the tract nominated for lease has been provided exclusively by the party nominating the tract for lease. The Louisiana State Mineral Board makes no representation as to the accuracy of the description of the nominated tract or its suitability for lease. The Louisiana State Mineral Board has made no inspection of the nominated tract for the existence of conflicting leases, operating agreements, private claims or other existing or future

obligations or conditions which may affect all or any portion of the nominated tract or its suitability for lease.

Maps depicting the nominated tract, containing the bearings, distances and coordinates of the nominated tract based on the Louisiana Coordinate System of 1927, North or South Zone, as applicable, are available for public inspection and review at the offices of the Louisiana State Mineral Board from 10:00 a.m. to 3:00 p.m. Monday - Friday.

In the event of conflict between the description of the nominated tract set forth above and the description of the nominated property as contained on the maps maintained at the offices of the Louisiana State Mineral Board, the Louisiana State Mineral Board maps shall prevail and shall provide the final property description of the lease to be awarded of the nominated tract.

Any mineral lease of the nominated tract by the Louisiana State Mineral Board shall be without warranty of any kind, either express, implied, or statutory, including, but not limited to, the implied warranties or merchantability and fitness for a particular purpose. Should the mineral lease of the nominated tract awarded by the Louisiana State Mineral Board be subsequently modified, cancelled or abrogated due to the existence of conflicting leases, operating agreements, private claims or other existing or future obligations or conditions which may affect all or any portion of the leased tract, it shall not relieve the Lessee of the obligation to pay any bonus due thereon to the Louisiana State Mineral Board, nor shall the Louisiana State Mineral Board be obligated to refund any consideration paid by the Lessee prior to such modification, cancellation, or abrogation, including, but not limited to, bonuses, rents and royalties.

NOTE: The State of Louisiana does hereby reserve, and this lease shall be subject to, the imprescriptible right of surface use in the nature of a servitude in favor of the Department of Natural Resources, including its Offices and Commissions, for the sole purpose of implementing, constructing, servicing and maintaining approved coastal zone management and/or restoration projects. Utilization of any and all rights derived under this lease by the mineral lessee, its agents, successors or assigns, shall not interfere with nor hinder the reasonable surface use by the Department of Natural Resources, its Offices or Commissions, as hereinabove reserved.

Applicant: G.K. Grady

Bidder	Cash Payment	Price / Acre	Rental	Oil	Gas	Other

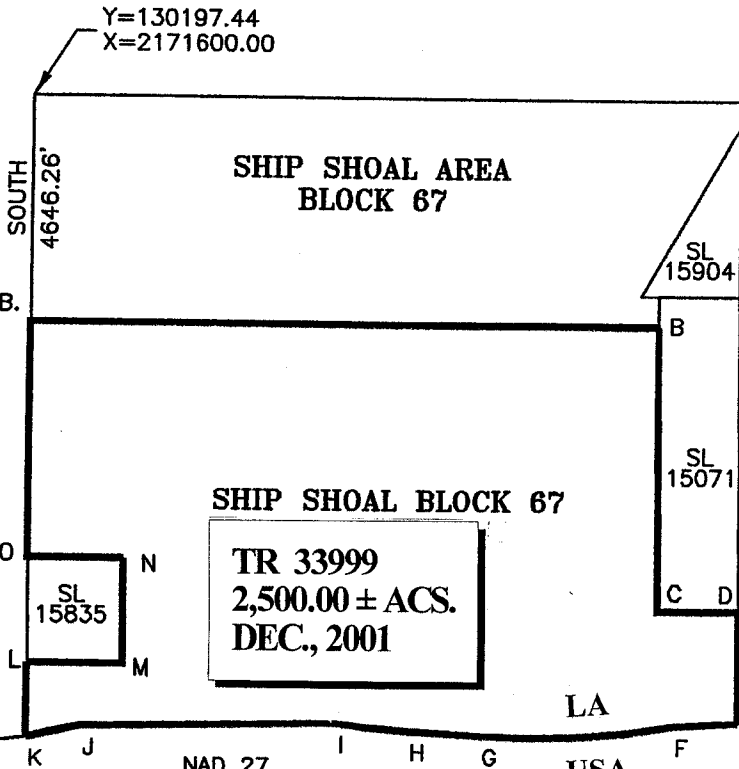
GULF OF MEXICO

COURSES: 32

LOUISIANA COORDINATE SYSTEM  
(1927 SOUTH ZONE)



P.O.B.  
A



A-B	EAST	13178.02'
B-C	S00°17'30"E	5853.81'
C-D	EAST	1700.03'
D-E	S00°17'30"E	2244.91'
E-F	RADIUS: 18240.60'	
	RADIUS POINT:	
	X=2184789.06	
	Y= 135610.91	
F-G	RADIUS: 18240.60'	
	RADIUS POINT:	
	X=2182168.46	
	Y= 135368.28	
G-H	N86°39'04"W	1523.60'
H-I	RADIUS: 18240.60'	
	RADIUS POINT:	
	X=2180637.11	
	Y= 135457.88	
I-J	S88°52'17"W	5280.02'
J-K	S77°59'23"W	1124.62'
K-L	NORTH	1497.79'
L-M	EAST	2000.00'
M-N	NORTH	2152.21'
N-O	WEST	2000.00'
O-A	NORTH	4827.20'

3 MILE LINE AS  
SET OUT IN THE  
JUNE, 1975,  
DECREE OF THE  
SUPREME COURT

SHIP SHOAL BLOCK 67

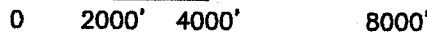
TR 33999  
2,500.00 ± ACS.  
DEC., 2001

A	X=2171600.00	Y=125551.18	K	X=2171600.00	Y=117073.98
B	X=2184778.02	Y=125551.18	L	X=2171600.00	Y=118571.77
C	X=2184807.82	Y=119697.44	M	X=2173600.00	Y=118571.77
D	X=2186507.85	Y=119697.44	N	X=2173600.00	Y=120723.98
E	X=2186519.28	Y=117452.56	O	X=2171600.00	Y=120723.98
F	X=2185156.00	Y=117374.00			
G	X=2181100.00	Y=117159.00			
H	X=2179579.00	Y=117248.00			
I	X=2177979.00	Y=117412.00			
J	X=2172700.00	Y=117308.00			

NAD 83

A X=3452399.71 Y=186257.09

GRAPHIC SCALE



NOTE: UNLESS OTHERWISE NOTED  
COORDINATES ARE BASED ON NAD27.

NOTE:  
NAD83 COORDINATES WERE CONVERTED  
TO/FROM NAD27 COORDINATES USING THE  
CORPSCON SOFTWARE FROM THE U.S.  
ARMY TOPOGRAPHIC ENGINEERING CENTER.

2500.00 ACRES; AREA OF INTEREST

BLOCK 67, SHIP SHOAL AREA  
GULF OF MEXICO

TERREBONNE PARISH

SCALE: 1"=4000'

**TRACT 34000 - PORTION OF BLOCK 7, SOUTH TIMBALIER AREA, REVISED, Terrebonne Parish, Louisiana**

That portion of Block 7, South Timbalier Area, Revised, Terrebonne Parish, Louisiana, belonging to the State of Louisiana and not under mineral lease on December 12, 2001, described as follows: Beginning at a point at the intersection of the shoreline used to establish the 3 mile line as set out in the June , 1975, Supreme Court decree with the East line of Block 7, South Timbalier Area, Revised, having Coordinates of X = 2,202,046.02 and Y = 139,683.33; thence South along the East line of said Block 7 a distance of 4,218.11 feet to a point having Coordinates of X = 2,202,046.02 and Y = 135,465.22; thence West a distance of 15,618.46 feet to a point on the West line of said Block 7 having Coordinates of X = 2,186,427.56 and Y = 135,465.22; thence North along said West line of said Block 7 a distance of 495.28 feet to a point at the intersection of said West line and said shoreline having Coordinates of X = 2,186,425.03 and Y = 135,960.50; thence Northeasterly along said shoreline the following courses: North 77 degrees 56 minutes 56 seconds East a distance of 174.82 feet to a point having Coordinates of X = 2,186,596.00 and Y = 135,997.00; thence North 80 degrees 37 minutes 19 seconds East a distance of 5,811.67 feet to a point having Coordinates of X = 2,192,330.00 and Y = 136,944.00; thence North 75 degrees 14 minutes 51 seconds East a distance of 6,169.38 feet to a point having Coordinates of X = 2,198,296.00 and Y = 138,515.00; thence North 72 degrees 41 minutes 43 seconds East a distance of 3,927.80 feet to the point of beginning, containing approximately **757.29 acres**, as shown outlined on a plat on file in the Office of Mineral Resources, Department of Natural Resources, as provided by the applicant. All bearings, distances and coordinates are based on Louisiana Coordinate System of 1927 (South Zone).

NOTE: The above description of the tract nominated for lease has been provided exclusively by the party nominating the tract for lease. The Louisiana State Mineral Board makes no representation as to the accuracy of the description of the nominated tract or its suitability for lease. The Louisiana State Mineral Board has made no inspection of the nominated tract for the existence of conflicting leases, operating agreements, private claims or other existing or future obligations or conditions which may affect all or any portion of the nominated tract or its suitability for lease.

Maps depicting the nominated tract, containing the bearings, distances and coordinates of the nominated tract based on the Louisiana Coordinate System of 1927, North or South Zone, as applicable, are available for public inspection and review at the offices of the Louisiana State Mineral Board from 10:00 a.m. to 3:00 p.m. Monday - Friday.

In the event of conflict between the description of the nominated tract set forth above and the description of the nominated property as contained on the maps maintained at the offices of the Louisiana State Mineral Board, the Louisiana State Mineral Board maps shall prevail and shall provide the final property description of the lease to be awarded of the nominated tract.

Any mineral lease of the nominated tract by the Louisiana State Mineral Board shall be without warranty of any kind, either express, implied, or statutory, including, but not limited to, the implied warranties or merchantability and fitness for a particular purpose.

Should the mineral lease of the nominated tract awarded by the Louisiana State Mineral Board be subsequently modified, cancelled or abrogated due to the existence of conflicting leases, operating agreements, private claims or other existing or future obligations or conditions which may affect all or any portion of the leased tract, it shall not relieve the Lessee of the obligation to pay any bonus due thereon to the Louisiana State Mineral Board, nor shall the Louisiana State Mineral Board be obligated to refund any consideration paid by the Lessee prior to such modification, cancellation, or abrogation, including, but not limited to, bonuses, rents and royalties.

NOTE: The above tract is located in or near an oyster restricted area and all operations in such area must be conducted in strict conformity with the stipulations and/or regulations of the Louisiana Department of Wildlife and Fisheries.

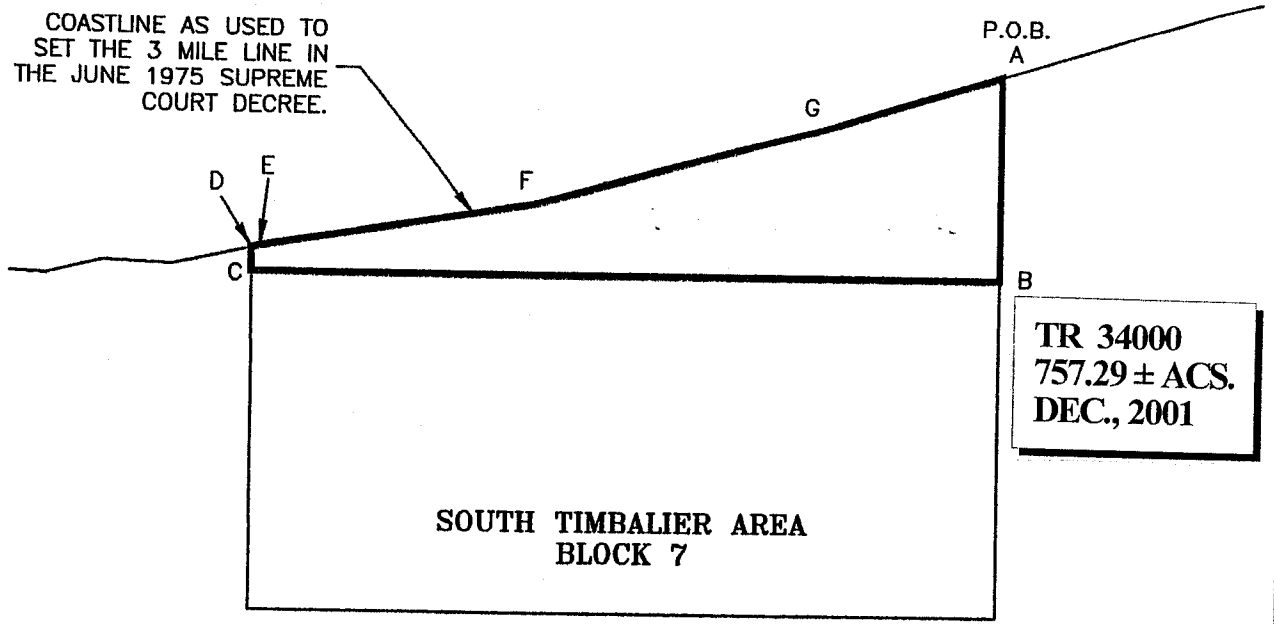
NOTE: The State of Louisiana does hereby reserve, and this lease shall be subject to, the imprescriptible right of surface use in the nature of a servitude in favor of the Department of Natural Resources, including its Offices and Commissions, for the sole purpose of implementing, constructing, servicing and maintaining approved coastal zone management and/or restoration projects. Utilization of any and all rights derived under this lease by the mineral lessee, its agents, successors or assigns, shall not interfere with nor hinder the reasonable surface use by the Department of Natural Resources, its Offices or Commissions, as hereinabove reserved.

Applicant: G.K. Grady

Bidder	Cash Payment	Price / Acre	Rental	Oil	Gas	Other

LOUISIANA COORDINATE SYSTEM  
(1927 SOUTH ZONE)

COASTLINE AS USED TO  
SET THE 3 MILE LINE IN  
THE JUNE 1975 SUPREME  
COURT DECREE.



SOUTH TIMBALIER AREA  
BLOCK 7

TR 34000  
757.29 ± ACS.  
DEC., 2001

COURSES:

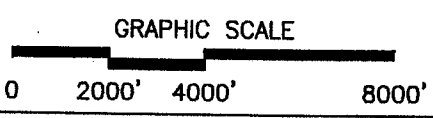
A-B	SOUTH	4218.11'
B-C	WEST	15618.46'
C-D	N00°17'30"W	495.28'
D-E	N77°56'56"E	174.82'
E-F	N80°37'19"E	5811.67'
F-G	N75°14'51"E	6169.38'
G-A	N72°41'44"E	3927.80'

NAD 27

A	X=2202046.02	Y=139683.33
B	X=2202046.02	Y=135465.22
C	X=2186427.56	Y=135465.22
D	X=2186425.03	Y=135960.50
E	X=2186596.00	Y=135997.00
F	X=2192330.00	Y=136944.00
G	X=2198296.00	Y=138515.00

NAD 83

A	X=3482845.62	Y=200389.29
---	--------------	-------------



NOTE: UNLESS OTHERWISE NOTED  
COORDINATES ARE BASED ON NAD27.

NOTE:  
NAD83 COORDINATES WERE CONVERTED  
TO/FROM NAD27 COORDINATES USING THE  
CORPSCON SOFTWARE FROM THE U.S.  
ARMY TOPOGRAPHIC ENGINEERING CENTER.

757.29 ACRE TRACT; AREA OF INTEREST

BLOCK 7, SOUTH TIMBALIER AREA  
GULF OF MEXICO  
TERREBONNE PARISH, LOUISIANA

SCALE: 1"=4000'