

**OFFSHORE**

**TRACTS**

**TRACT 33993 - PORTION OF BLOCK 10, WEST CAMERON AREA, REVISED, Cameron Parish, Louisiana**

That portion of Block 10, West Cameron Area, Revised, Cameron Parish, Louisiana, belonging to the State of Louisiana and not under mineral lease on December 12, 2001, described as follows: Beginning at a point having Coordinates of X = 1,302,903.42 and Y = 393,790.24; thence West 90 degrees 00 minutes 00 seconds West 14,758.05 feet to the southwest corner of Block 10 having Coordinates of X = 1,288,145.38 and Y = 393,790.24; thence North 4,456.48 feet to a point having Coordinates of X = 1,288,145.38 and Y = 398,246.72; thence South 58 degrees 33 minutes 57 seconds East 5,842.00 feet to a point having Coordinates of X = 1,293,130.00 and Y = 395,200.00; thence North 39 degrees 51 minutes 48 seconds West 7,776.80 feet to a point having Coordinates of X = 1,288,145.38 and Y = 401,169.27; thence East 14,758.04 feet to a point having Coordinates of X = 1,302,903.42 and Y = 401,169.27; thence South 7,379.03 feet to the point of beginning, containing approximately **2,332.79 acres**, as shown outlined on a plat on file in the Office of Mineral Resources, Department of Natural Resources, as provided by the applicant. All bearings, distances and coordinates are based on Louisiana Coordinate System of 1927 (South Zone).

NOTE: The above description of the tract nominated for lease has been provided exclusively by the party nominating the tract for lease. The Louisiana State Mineral Board makes no representation as to the accuracy of the description of the nominated tract or its suitability for lease. The Louisiana State Mineral Board has made no inspection of the nominated tract for the existence of conflicting leases, operating agreements, private claims or other existing or future obligations or conditions which may affect all or any portion of the nominated tract or its suitability for lease.

Maps depicting the nominated tract, containing the bearings, distances and coordinates of the nominated tract based on the Louisiana Coordinate System of 1927, North or South Zone, as applicable, are available for public inspection and review at the offices of the Louisiana State Mineral Board from 10:00 a.m. to 3:00 p.m. Monday - Friday.

In the event of conflict between the description of the nominated tract set forth above and the description of the nominated property as contained on the maps maintained at the offices of the Louisiana State Mineral Board, the Louisiana State Mineral Board maps shall prevail and shall provide the final property description of the lease to be awarded of the nominated tract.

Any mineral lease of the nominated tract by the Louisiana State Mineral Board shall be without warranty of any kind, either express, implied, or statutory, including, but not limited to, the implied warranties or merchantability and fitness for a particular purpose. Should the mineral lease of the nominated tract awarded by the Louisiana State Mineral Board be subsequently modified, cancelled or abrogated due to the existence of conflicting leases, operating agreements, private claims or other existing of future obligations or conditions which may affect all or any portion of the leased tract, it shall not relieve the Lessee of the obligation to pay any bonus due thereon to the Louisiana State Mineral Board, nor shall the Louisiana State Mineral Board be obligated to refund any

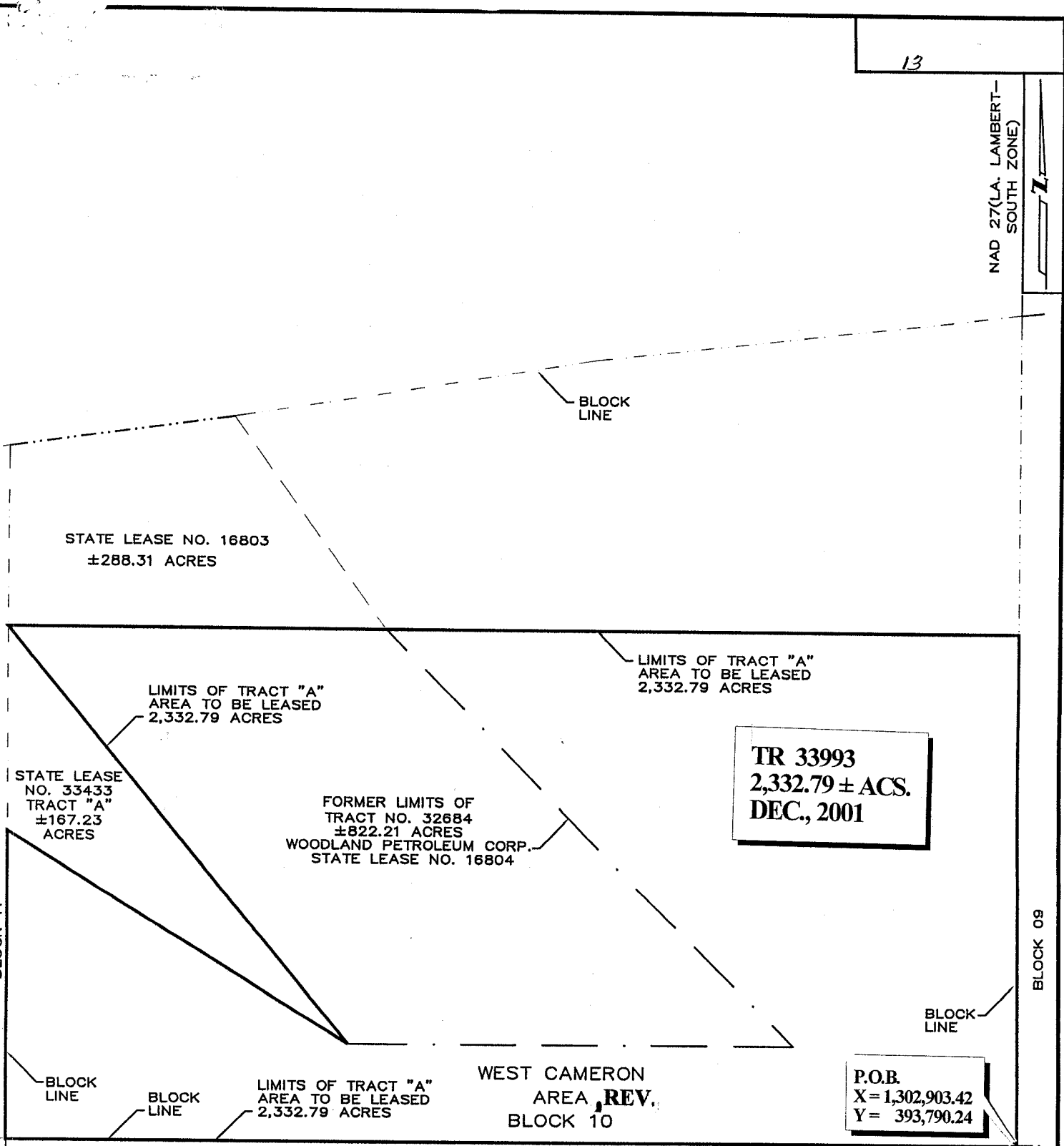
consideration paid by the Lessee prior to such modification, cancellation, or abrogation, including, but not limited to, bonuses, rents and royalties.

NOTE: The State of Louisiana does hereby reserve, and this lease shall be subject to, the imprescriptible right of surface use in the nature of a servitude in favor of the Department of Natural Resources, including its Offices and Commissions, for the sole purpose of implementing, constructing, servicing and maintaining approved coastal zone management and/or restoration projects. Utilization of any and all rights derived under this lease by the mineral lessee, its agents, successors or assigns, shall not interfere with nor hinder the reasonable surface use by the Department of Natural Resources, its Offices or Commissions, as hereinabove reserved.

Applicant: Angelle & Donohue Oil & Gas Properties, Inc.

Bidder	Cash Payment	Price / Acre	Rental	Oil	Gas	Other

NAD 27(LA. LAMBERT-SOUTH ZONE)



**TR 33993**  
**2,332.79 ± ACS.**  
**DEC., 2001**

**P.O.B.**  
**X=1,302,903.42**  
**Y= 393,790.24**

**WEST CAMERON**  
**AREA, REV.**  
**BLOCK 10**

**LIMITS OF TRACT "A"**  
**AREA TO BE LEASED**  
**2,332.79 ACRES**

**FORMER LIMITS OF**  
**TRACT NO. 32684**  
**±822.21 ACRES**  
**WOODLAND PETROLEUM CORP.**  
**STATE LEASE NO. 16804**

**STATE LEASE NO. 16803**  
**±288.31 ACRES**

**STATE LEASE**  
**NO. 33433**  
**TRACT "A"**  
**±167.23**  
**ACRES**

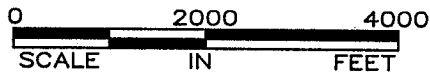
**LIMITS OF TRACT "A"**  
**AREA TO BE LEASED**  
**2,332.79 ACRES**

**LIMITS OF TRACT "A"**  
**AREA TO BE LEASED**  
**2,332.79 ACRES**

BLOCK 11

BLOCK 09

BLOCK 21



**CAMERON PARISH**

**WEST CAMERON AREA, REV.**  
**BLOCK 10,**

**TRACT 33994 - PORTION OF BLOCK 45, SHIP SHOAL AREA, REVISED, Terrebonne Parish, Louisiana**

That portion of Block 45, Ship Shoal Area, Revised, Terrebonne Parish, Louisiana, belonging to the State of Louisiana and not under mineral lease on December 12, 2001, described as follows: Beginning at a point at the Southeast corner of Block 45, Ship Shoal Area, having Coordinates of X = 2,171,600.00 and Y = 127,591.99; thence West a distance of 15,600.00 feet to a point having Coordinates of X = 2,156,000.00 and Y = 127,591.99; thence North a distance of 1,805.27 feet to a point having Coordinates of X = 2,156,000.00 and Y = 129,397.26; thence South 56 degrees 54 minutes 25 seconds East a distance of 2,614.03 feet to a point having Coordinates of X = 2,158,190.00 and Y = 127,970.00; thence North 39 degrees 23 minutes 27 seconds East a distance of 1,591.54 feet to a point having Coordinates of X = 2,159,200.00 and Y = 129,200.00; thence North a distance of 490.00 feet to a point having Coordinates of X = 2,159,200.00 and Y = 129,690.00; thence North 36 degrees 34 minutes 14 seconds West a distance of 3,063.04 feet to a point having Coordinates of X = 2,157,375.00 and Y = 132,150.00; thence North 65 degrees 46 minutes 56 seconds West a distance of 1,507.69 feet to a point having Coordinates of X = 2,156,000.00 and Y = 132,768.48; thence North a distance of 2,964.54 feet to a point on the shoreline as used to set the 3 mile line of the 1975 decree of the Supreme Court having Coordinates of X = 2,156,000.00 and Y = 135,733.00; thence Southeasterly on a straight line to a point having Coordinates of X = 2,157,920 and Y = 135,521; thence Southeasterly on a straight line to a point having Coordinates of X = 2,162,430 and Y = 132,112; thence Southeasterly on a straight line to a point having Coordinates of X = 2,164,477 and Y = 134,753; thence Northeasterly on a straight line to a point having Coordinates of X = 2,167,836 and Y = 134,922; thence Northeasterly on a straight line to a point having Coordinates of X = 2,169,680 and Y = 135,315; thence Northeasterly on a straight line to a point having Coordinates of X = 2,170,035 and Y = 135,500; thence Northeasterly on a straight line to a point having Coordinates of X = 2,171,600.00 and Y = 135,530.82; thence South a distance of 7,938.83 feet to the point of beginning, **LESS AND EXCEPT** all those portions of State Lease No. 16557 that lie within the above described tract, containing approximately **2,059.75 acres**, as shown outlined on a plat on file in the Office of Mineral Resources, Department of Natural Resources, as provided by the applicant. All bearings, distances and coordinates are based on Louisiana Coordinate System of 1927 (South Zone).

NOTE: The above description of the tract nominated for lease has been provided exclusively by the party nominating the tract for lease. The Louisiana State Mineral Board makes no representation as to the accuracy of the description of the nominated tract or its suitability for lease. The Louisiana State Mineral Board has made no inspection of the nominated tract for the existence of conflicting leases, operating agreements, private claims or other existing or future obligations or conditions which may affect all or any portion of the nominated tract or its suitability for lease.

Maps depicting the nominated tract, containing the bearings, distances and coordinates of the nominated tract based on the Louisiana Coordinate System of 1927, North or South Zone, as applicable, are available for public inspection and review at the offices of the Louisiana State Mineral Board from 10:00 a.m. to 3:00

p.m. Monday - Friday.

In the event of conflict between the description of the nominated tract set forth above and the description of the nominated property as contained on the maps maintained at the offices of the Louisiana State Mineral Board, the Louisiana State Mineral Board maps shall prevail and shall provide the final property description of the lease to be awarded of the nominated tract.

Any mineral lease of the nominated tract by the Louisiana State Mineral Board shall be without warranty of any kind, either express, implied, or statutory, including, but not limited to, the implied warranties or merchantability and fitness for a particular purpose. Should the mineral lease of the nominated tract awarded by the Louisiana State Mineral Board be subsequently modified, cancelled or abrogated due to the existence of conflicting leases, operating agreements, private claims or other existing of future obligations or conditions which may affect all or any portion of the leased tract, it shall not relieve the Lessee of the obligation to pay any bonus due thereon to the Louisiana State Mineral Board, nor shall the Louisiana State Mineral Board be obligated to refund any consideration paid by the Lessee prior to such modification, cancellation, or abrogation, including, but not limited to, bonuses, rents and royalties.

NOTE: The above tract is located in or near an oyster restricted area and all operations in such area must be conducted in strict conformity with the stipulations and/or regulations of the Louisiana Department of Wildlife and Fisheries.

NOTE: The State of Louisiana does hereby reserve, and this lease shall be subject to, the imprescriptible right of surface use in the nature of a servitude in favor of the Department of Natural Resources, including its Offices and Commissions, for the sole purpose of implementing, constructing, servicing and maintaining approved coastal zone management and/or restoration projects. Utilization of any and all rights derived under this lease by the mineral lessee, its agents, successors or assigns, shall not interfere with nor hinder the reasonable surface use by the Department of Natural Resources, its Offices or Commissions, as hereinabove reserved.

Applicant: G.K. Grady

Bidder	Cash Payment	Price / Acre	Rental	Oil	Gas	Other