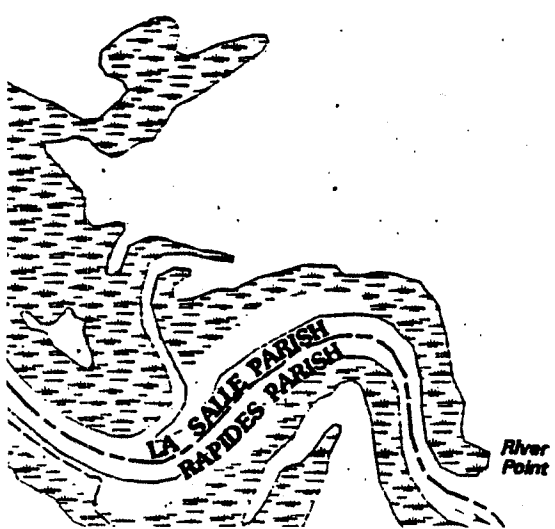


POINT OF BEGINNING:
 X=2,101,840.00
 Y= 298,670.00

T6N-R3E, LASALLE PARISH



SCALE: 1" = 2,000'

TRACT 34014 - Cameron and Jefferson Davis Parishes, Louisiana

All of the lands now or formerly constituting the beds and bottoms of all water bodies of every nature and description and all islands and other lands formed by accretion or reliction, except tax lands, owned by and not under mineral lease from the State of Louisiana on December 12, 2001, situated in Cameron and Jefferson Davis Parishes, Louisiana, within the following described boundaries: Beginning at a point having Coordinates of X = 1,544,030.5407 and Y = 501,850.00 which is the Northwest corner of Section 3, Township 12 South, Range 4 West; thence East 3,405.6871 feet to a point on the West boundary line of State Lease No. 16811 having Coordinates of X = 1,547,436.2277 and Y = 501,850.00; thence South 2,400.32 feet along the West boundary line of State Lease No. 16811 to a point having Coordinates of X = 1,547,436.2501 and Y = 499,449.68; thence Easterly 3,648.9057 feet along the South boundary line of State Lease No. 16811 to a point on the Southwest boundary line of State Lease No. 13558 having Coordinates of X = 1,551,089.41 and Y = 499,449.68; thence South 54 degrees 42 minutes 47 seconds East a distance of 4,007.1869 feet along the Southwest boundary line of State Lease No. 13558 to a point having Coordinates of X = 1,554,360.0167 and Y = 497,134.3661; thence continuing in a Southeasterly direction 500.777 feet along the Southerly boundary line of State Lease No. 13558 to a point on the East boundary line of Section 2, Township 12 South, Range 4 West, having Coordinates of X = 1,554,864.5942 and Y = 496,952.4768; thence South 9,285.7806 feet along the East boundary line of Section 2, 11 and 14, Township 12 South, Range 4 East, to a point having Coordinates of X = 1,554,761.4402 and Y = 487,667.2691; thence West 3,861.7552 feet to a point on the East boundary line of Tract 33749 having Coordinates of X = 1,550,900.00 and Y = 487,716.5889; thence North 528.8345 feet along the East boundary line of Tract 33749 to a point on the South boundary of Tract 33750 having Coordinates of X = 1,550,900.00 and Y = 488,250.00; thence East 950.0187 feet along the South boundary line of Tract 33750 to a point having Coordinates of X = 1,551,850.00 and Y = 488,250.00; thence North 3,780.5228 feet along the East boundary line of Tract 33750 to a point having Coordinates of X = 1,551,850.2883 and Y = 492,050.00; thence West 7,866.1119 feet along the North boundary line of Tract 33750 and 33749 to a point on the West boundary line of Section 10, Township 12 South, Range 4 West, having Coordinates of X = 1,543,960.1764 and Y = 492,050.00; thence North 9,800.2526 feet along the West boundary line of Sections 10 and 3, Township 12 South, Range 4 East, to the point of beginning, containing approximately **2,223.77 acres**, as shown outlined on a plat on file in the Office of Mineral Resources, Department of Natural Resources, as provided by the applicant. All bearings, distances and coordinates are based on Louisiana Coordinate System of 1927 (South Zone).

NOTE: The above description of the tract nominated for lease has been provided exclusively by the party nominating the tract for lease. The Louisiana State Mineral Board makes no representation as to the accuracy of the description of the nominated tract or its suitability for lease. The Louisiana State Mineral Board has made no inspection of the nominated tract for the existence of conflicting leases, operating agreements, private claims or other existing or future obligations or conditions which may affect all or any portion of the nominated tract or its suitability for lease.

Maps depicting the nominated tract, containing the bearings,

distances and coordinates of the nominated tract based on the Louisiana Coordinate System of 1927, North or South Zone, as applicable, are available for public inspection and review at the offices of the Louisiana State Mineral Board from 10:00 a.m. to 3:00 p.m. Monday - Friday.

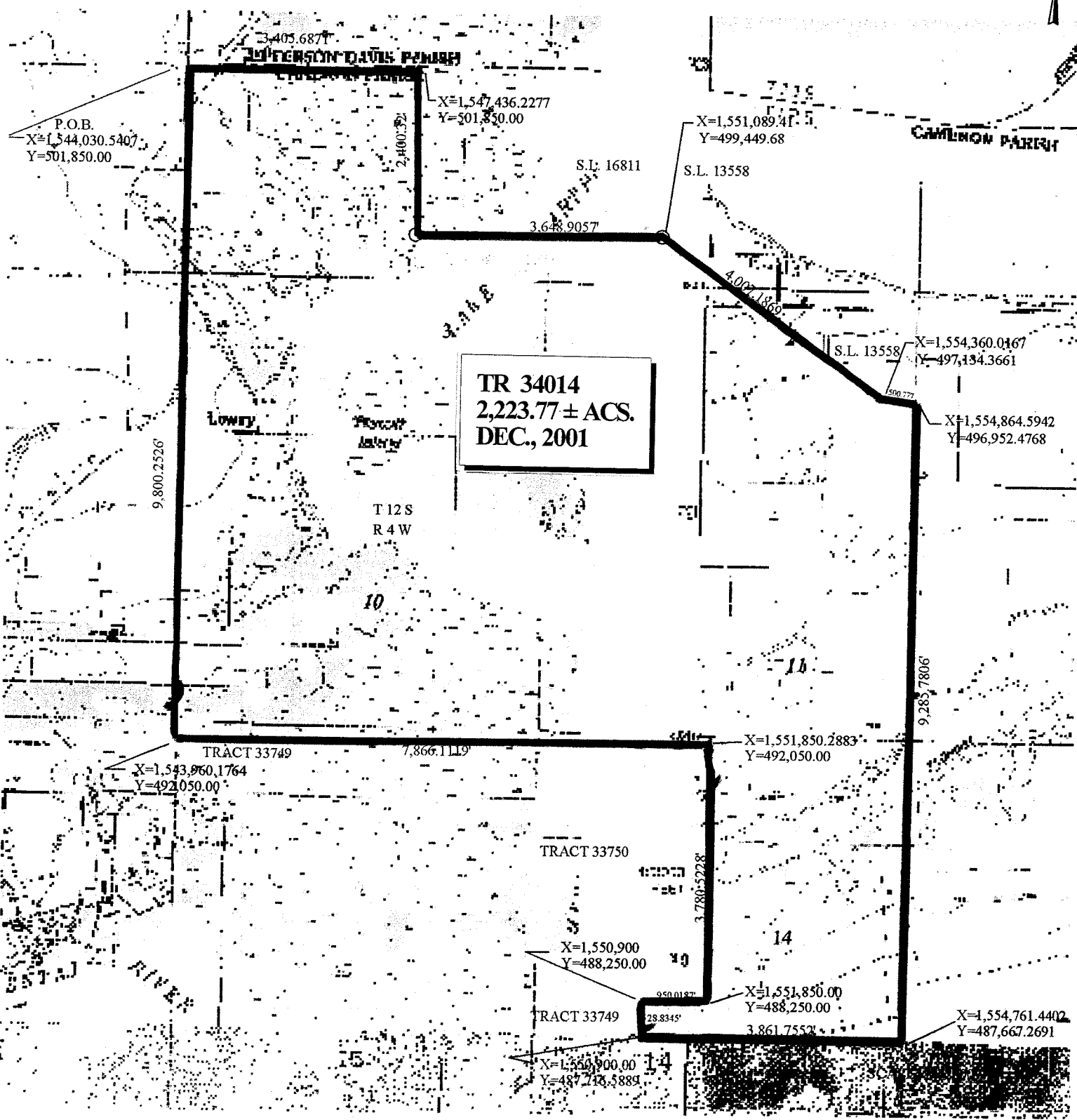
In the event of conflict between the description of the nominated tract set forth above and the description of the nominated property as contained on the maps maintained at the offices of the Louisiana State Mineral Board, the Louisiana State Mineral Board maps shall prevail and shall provide the final property description of the lease to be awarded of the nominated tract.

Any mineral lease of the nominated tract by the Louisiana State Mineral Board shall be without warranty of any kind, either express, implied, or statutory, including, but not limited to, the implied warranties or merchantability and fitness for a particular purpose. Should the mineral lease of the nominated tract awarded by the Louisiana State Mineral Board be subsequently modified, cancelled or abrogated due to the existence of conflicting leases, operating agreements, private claims or other existing or future obligations or conditions which may affect all or any portion of the leased tract, it shall not relieve the Lessee of the obligation to pay any bonus due thereon to the Louisiana State Mineral Board, nor shall the Louisiana State Mineral Board be obligated to refund any consideration paid by the Lessee prior to such modification, cancellation, or abrogation, including, but not limited to, bonuses, rents and royalties.

NOTE: The State of Louisiana does hereby reserve, and this lease shall be subject to, the imprescriptible right of surface use in the nature of a servitude in favor of the Department of Natural Resources, including its Offices and Commissions, for the sole purpose of implementing, constructing, servicing and maintaining approved coastal zone management and/or restoration projects. Utilization of any and all rights derived under this lease by the mineral lessee, its agents, successors or assigns, shall not interfere with nor hinder the reasonable surface use by the Department of Natural Resources, its Offices or Commissions, as hereinabove reserved.

Applicant: Angela West

Bidder	Cash Payment	Price / Acre	Rental	Oil	Gas	Other



TRACT 34015 - Lafayette Parish, Louisiana

All of the lands now or formerly constituting the beds and bottoms of all water bodies of every nature and description and all islands and other lands formed by accretion or reliction, except tax lands, owned by and not under mineral lease from the State of Louisiana on December 12, 2001, situated in Lafayette Parish, Louisiana, within the following described boundaries: Beginning at a point having Coordinates of X = 1,774,800.00 and Y = 555,300.00; thence East 13,200.00 feet to a point having Coordinates of X = 1,788,000.00 and Y = 555,300.00; thence South 3,300.00 feet to a point having Coordinates of X = 1,788,000.00 and Y = 552,000.00; thence West 800.00 feet to a point having Coordinates of X = 1,787,200.00 and Y = 552,000.00; thence the following courses: West 8,000.00 feet and South 8,175.00 feet to a point having Coordinates of X = 1,779,200.00 and Y = 543,825.00; thence West 4,400.00 feet to a point having Coordinates of X = 1,774,800.00 and Y = 543,825.00; thence North 11,475 feet to the point of beginning, containing approximately **55 acres**, as shown outlined on a plat on file in the Office of Mineral Resources, Department of Natural Resources, as provided by the applicant. All bearings, distances and coordinates are based on Louisiana Coordinate System of 1927 (South Zone).

NOTE: The above description of the tract nominated for lease has been provided exclusively by the party nominating the tract for lease. The Louisiana State Mineral Board makes no representation as to the accuracy of the description of the nominated tract or its suitability for lease. The Louisiana State Mineral Board has made no inspection of the nominated tract for the existence of conflicting leases, operating agreements, private claims or other existing or future obligations or conditions which may affect all or any portion of the nominated tract or its suitability for lease.

Maps depicting the nominated tract, containing the bearings, distances and coordinates of the nominated tract based on the Louisiana Coordinate System of 1927, North or South Zone, as applicable, are available for public inspection and review at the offices of the Louisiana State Mineral Board from 10:00 a.m. to 3:00 p.m. Monday - Friday.

In the event of conflict between the description of the nominated tract set forth above and the description of the nominated property as contained on the maps maintained at the offices of the Louisiana State Mineral Board, the Louisiana State Mineral Board maps shall prevail and shall provide the final property description of the lease to be awarded of the nominated tract.

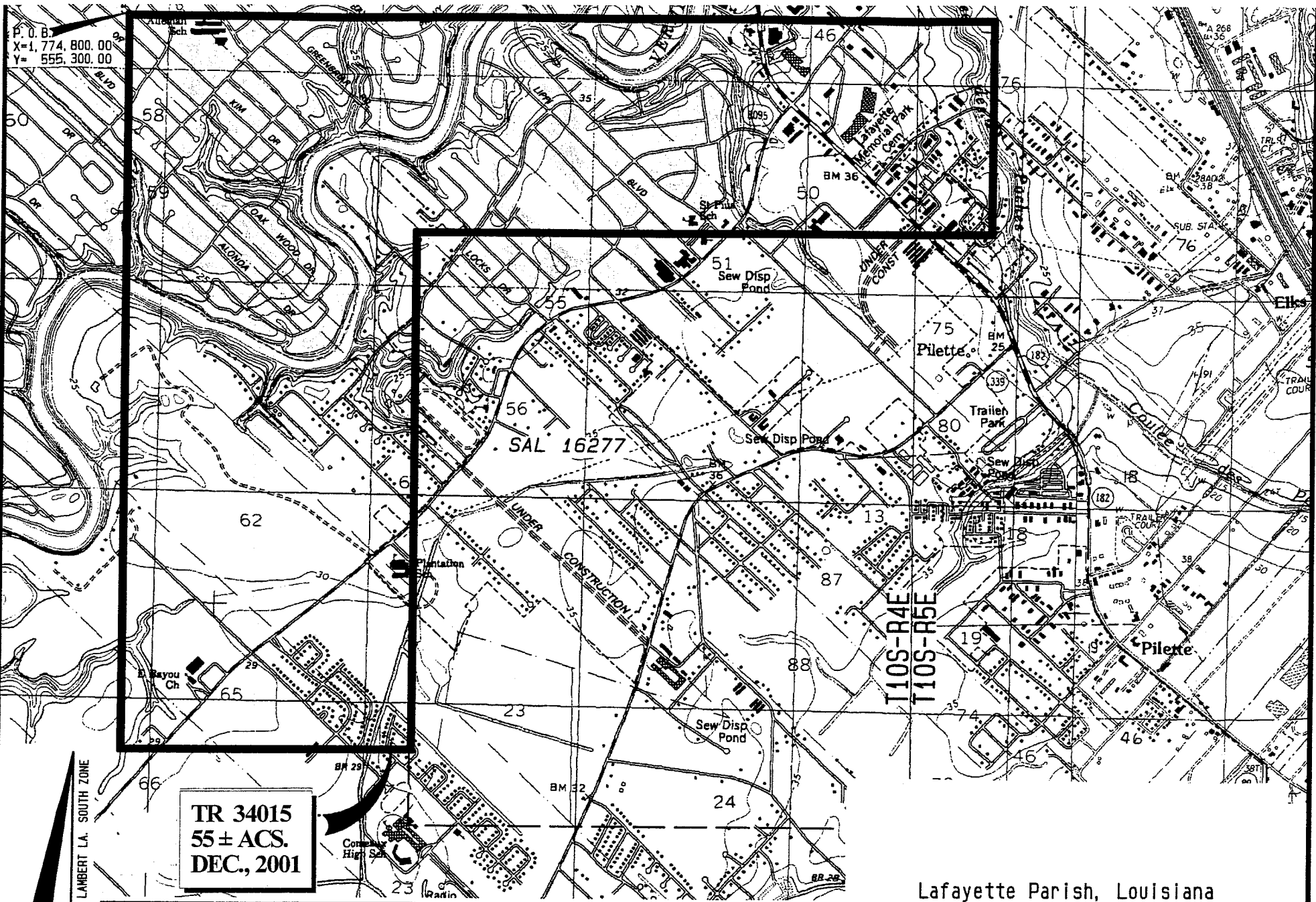
Any mineral lease of the nominated tract by the Louisiana State Mineral Board shall be without warranty of any kind, either express, implied, or statutory, including, but not limited to, the implied warranties or merchantability and fitness for a particular purpose. Should the mineral lease of the nominated tract awarded by the Louisiana State Mineral Board be subsequently modified, cancelled or abrogated due to the existence of conflicting leases, operating agreements, private claims or other existing of future obligations or conditions which may affect all or any portion of the leased tract, it shall not relieve the Lessee of the obligation to pay any bonus due thereon to the Louisiana State Mineral Board, nor shall the Louisiana State Mineral Board be obligated to refund any

consideration paid by the Lessee prior to such modification, cancellation, or abrogation, including, but not limited to, bonuses, rents and royalties.

Applicant: Paul Monju and Associates, Inc.

Bidder	Cash Payment	Price / Acre	Rental	Oil	Gas	Other

P. O. B.
X=1,774,800.00
Y=555,300.00



TR 34015
55 ± ACS.
DEC., 2001

NAD 27 LAMBERT LA. SOUTH ZONE

Lafayette Parish, Louisiana

