

**INLAND**

**TRACTS**

**TRACT 34009 - Bienville Parish, Louisiana**

All of the right, title and interest of the State of Louisiana in the mineral rights in and to the following described property, which is not under mineral lease from the State of Louisiana on December 12, 2001, situated in Bienville Parish, Louisiana, and being more fully described as follows: The Southeast Quarter of the Southwest Quarter and the Southwest Quarter of the Southeast Quarter of Section 20, Township 17 North, Range 8 West, Bienville Parish, Louisiana, adjudicated to the State of Louisiana for the non-payment of taxes for the year 1931 in the name of Ellis Shephard and sold to John H. Ashley, January 21, 1947, State Patent No. 14521, containing approximately 80 acres, as shown outlined on a plat on file in the Office of Mineral Resources, Department of Natural Resources, as provided by the applicant. All bearings, distances and coordinates are based on Louisiana Coordinate System of 1927 (South Zone).

NOTE: The above description of the tract nominated for lease has been provided exclusively by the party nominating the tract for lease. The Louisiana State Mineral Board makes no representation as to the accuracy of the description of the nominated tract or its suitability for lease. The Louisiana State Mineral Board has made no inspection of the nominated tract for the existence of conflicting leases, operating agreements, private claims or other existing or future obligations or conditions which may affect all or any portion of the nominated tract or its suitability for lease.

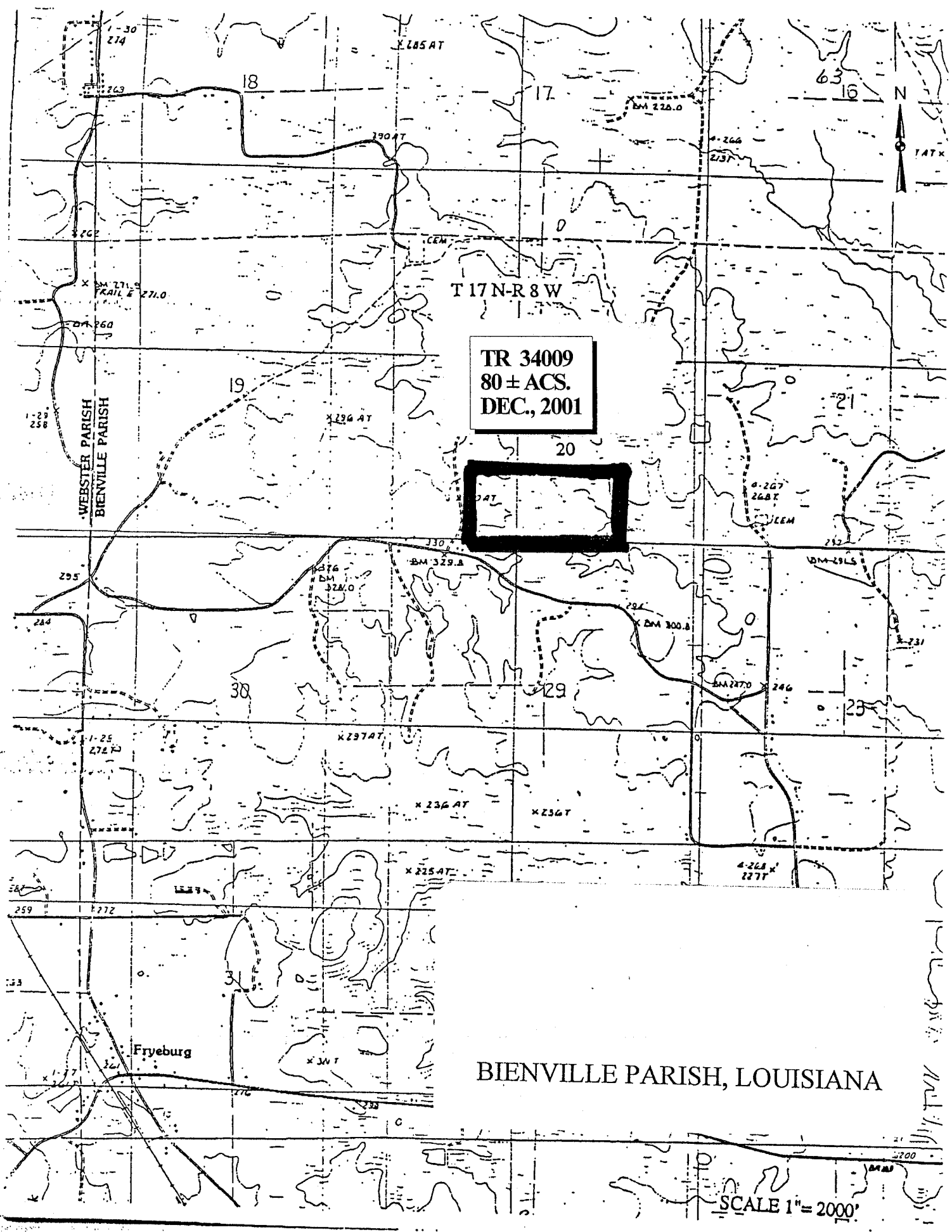
Maps depicting the nominated tract, containing the bearings, distances and coordinates of the nominated tract based on the Louisiana Coordinate System of 1927, North or South Zone, as applicable, are available for public inspection and review at the offices of the Louisiana State Mineral Board from 10:00 a.m. to 3:00 p.m. Monday - Friday.

In the event of conflict between the description of the nominated tract set forth above and the description of the nominated property as contained on the maps maintained at the offices of the Louisiana State Mineral Board, the Louisiana State Mineral Board maps shall prevail and shall provide the final property description of the lease to be awarded of the nominated tract.

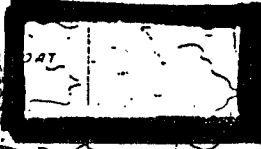
Any mineral lease of the nominated tract by the Louisiana State Mineral Board shall be without warranty of any kind, either express, implied, or statutory, including, but not limited to, the implied warranties or merchantability and fitness for a particular purpose. Should the mineral lease of the nominated tract awarded by the Louisiana State Mineral Board be subsequently modified, cancelled or abrogated due to the existence of conflicting leases, operating agreements, private claims or other existing of future obligations or conditions which may affect all or any portion of the leased tract, it shall not relieve the Lessee of the obligation to pay any bonus due thereon to the Louisiana State Mineral Board, nor shall the Louisiana State Mineral Board be obligated to refund any consideration paid by the Lessee prior to such modification, cancellation, or abrogation, including, but not limited to, bonuses, rents and royalties.

Applicant: Woodland Petroleum Corporation

Bidder	Cash Payment	Price / Acre	Rental	Oil	Gas	Other



TR 34009  
80 ± ACS.  
DEC., 2001



BIENVILLE PARISH, LOUISIANA

SCALE 1" = 2000'

**TRACT 34010 - Bienville Parish, Louisiana**

All of the lands now or formerly constituting the beds and bottoms of all water bodies of every nature and description and all islands and other lands formed by accretion or reliction, except tax lands, owned by and not under mineral lease from the State of Louisiana on December 12, 2001, situated in Bienville Parish, Louisiana, within the following described boundaries: Beginning at a point having Coordinates of X = 1,851,676.55 and Y = 570,892.92; thence South 5,312.12 feet to a point having Coordinates of X = 1,851,676.55 and Y = 565,580.80; thence East 5,327.53 feet to a point having Coordinates of X = 1,857,004.08 and Y = 565,580.80; thence South 5,251.10 feet to a point having Coordinates of X = 1,857,004.08 and Y = 560,329.70; thence West 10,623.89 feet to a point having Coordinates of X = 1,846,380.19 and Y = 560,329.70; thence North 10,563.33 feet to a point having Coordinates of X = 1,846,380.19 and Y = 570,893.03; thence East 5,296.36 feet to the point of beginning, containing approximately 29 acres, as shown outlined on a plat on file in the Office of Mineral Resources, Department of Natural Resources, as provided by the applicant. All bearings, distances and coordinates are based on Louisiana Coordinate System of 1927 (North Zone).

NOTE: The above description of the tract nominated for lease has been provided exclusively by the party nominating the tract for lease. The Louisiana State Mineral Board makes no representation as to the accuracy of the description of the nominated tract or its suitability for lease. The Louisiana State Mineral Board has made no inspection of the nominated tract for the existence of conflicting leases, operating agreements, private claims or other existing or future obligations or conditions which may affect all or any portion of the nominated tract or its suitability for lease.

Maps depicting the nominated tract, containing the bearings, distances and coordinates of the nominated tract based on the Louisiana Coordinate System of 1927, North or South Zone, as applicable, are available for public inspection and review at the offices of the Louisiana State Mineral Board from 10:00 a.m. to 3:00 p.m. Monday - Friday.

In the event of conflict between the description of the nominated tract set forth above and the description of the nominated property as contained on the maps maintained at the offices of the Louisiana State Mineral Board, the Louisiana State Mineral Board maps shall prevail and shall provide the final property description of the lease to be awarded of the nominated tract.

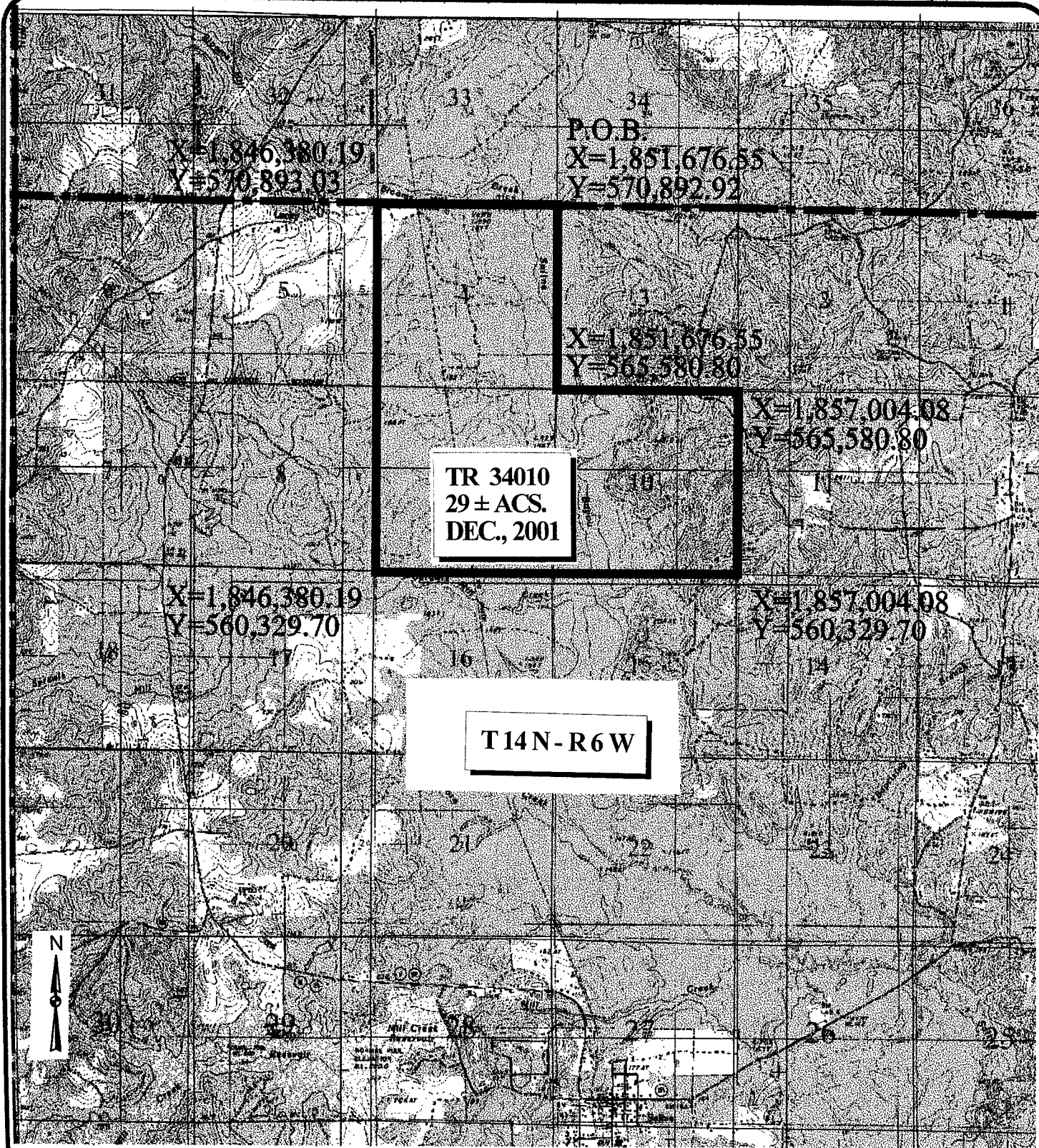
Any mineral lease of the nominated tract by the Louisiana State Mineral Board shall be without warranty of any kind, either express, implied, or statutory, including, but not limited to, the implied warranties or merchantability and fitness for a particular purpose. Should the mineral lease of the nominated tract awarded by the Louisiana State Mineral Board be subsequently modified, cancelled or abrogated due to the existence of conflicting leases, operating agreements, private claims or other existing of future obligations or conditions which may affect all or any portion of the leased tract, it shall not relieve the Lessee of the obligation to pay any bonus due thereon to the Louisiana State Mineral Board, nor shall the Louisiana State Mineral Board be obligated to refund any consideration paid by the Lessee prior to such modification,

cancellation, or abrogation, including, but not limited to, bonuses, rents and royalties.

NOTE: The above tract is located upon a restricted scenic river and all operations in this area must be conducted in strict conformity with the regulations of the Louisiana Department of Wildlife and Fisheries.

Applicant: David A. Miller

Bidder	Cash Payment	Price / Acre	Rental	Oil	Gas	Other



TR 34010  
 29 ± ACS.  
 DEC., 2001

T14N-R6W

X=1,846,380.19  
 Y=570,893.03

P.O.B.  
 X=1,851,676.55  
 Y=570,892.92

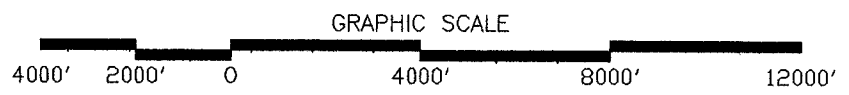
X=1,851,676.55  
 Y=565,580.80

X=1,857,004.08  
 Y=565,580.80

X=1,846,380.19  
 Y=560,329.70

X=1,857,004.08  
 Y=560,329.70

SECTIONS 4, 9 AND 10  
 BIENVILLE PARISH, LOUISIANA



**TRACT 34011 - Bienville Parish, Louisiana**

All of the lands now or formerly constituting the beds and bottoms of all water bodies of every nature and description and all islands and other lands formed by accretion or reliction, except tax lands, owned by and not under mineral lease from the State of Louisiana on December 12, 2001, situated in Bienville Parish, Louisiana, within the following described boundaries: Beginning at a point having Coordinates of X = 1,856,963.15 and Y = 560,321.08; thence South 5,334.43 feet to a point having Coordinates of X = 1,856,963.15 and Y = 554,986.65; thence West 16,086.56 feet to a point having Coordinates of X = 1,840,876.59 and Y = 554,986.65; thence North 5,334.43 feet to a point having Coordinates of X = 1,840,876.59 and Y = 560,321.08; thence East 16,086.56 feet to the point of beginning, containing approximately **52 acres**, as shown outlined on a plat on file in the Office of Mineral Resources, Department of Natural Resources, as provided by the applicant. All bearings, distances and coordinates are based on Louisiana Coordinate System of 1927 (North Zone).

NOTE: The above description of the tract nominated for lease has been provided exclusively by the party nominating the tract for lease. The Louisiana State Mineral Board makes no representation as to the accuracy of the description of the nominated tract or its suitability for lease. The Louisiana State Mineral Board has made no inspection of the nominated tract for the existence of conflicting leases, operating agreements, private claims or other existing or future obligations or conditions which may affect all or any portion of the nominated tract or its suitability for lease.

Maps depicting the nominated tract, containing the bearings, distances and coordinates of the nominated tract based on the Louisiana Coordinate System of 1927, North or South Zone, as applicable, are available for public inspection and review at the offices of the Louisiana State Mineral Board from 10:00 a.m. to 3:00 p.m. Monday - Friday.

In the event of conflict between the description of the nominated tract set forth above and the description of the nominated property as contained on the maps maintained at the offices of the Louisiana State Mineral Board, the Louisiana State Mineral Board maps shall prevail and shall provide the final property description of the lease to be awarded of the nominated tract.

Any mineral lease of the nominated tract by the Louisiana State Mineral Board shall be without warranty of any kind, either express, implied, or statutory, including, but not limited to, the implied warranties or merchantability and fitness for a particular purpose. Should the mineral lease of the nominated tract awarded by the Louisiana State Mineral Board be subsequently modified, cancelled or abrogated due to the existence of conflicting leases, operating agreements, private claims or other existing of future obligations or conditions which may affect all or any portion of the leased tract, it shall not relieve the Lessee of the obligation to pay any bonus due thereon to the Louisiana State Mineral Board, nor shall the Louisiana State Mineral Board be obligated to refund any consideration paid by the Lessee prior to such modification, cancellation, or abrogation, including, but not limited to, bonuses, rents and royalties.