

TRACT 45212 - Natchitoches and Red River Parishes, Louisiana

All of the lands now or formerly constituting the beds and bottoms of all water bodies of every nature and description as to which title is vested in the State of Louisiana, together with all islands arising therein and other lands formed by accretion or by reliction, where allowed by law, excepting tax adjudicated lands, and not presently under mineral lease on November 13, 2019, situated in Natchitoches and Red River Parishes, Louisiana, and more particularly described as follows: Beginning at the Easternmost Northeast corner of State Lease No. 21904 and a point on the South boundary of State Lease No. 20404, as amended having Coordinates of X = 1,750,610.43 and Y = 450,574.53; thence South 89 degrees 59 minutes 18 seconds East 5,158.53 feet along the South boundary of said State Lease No. 20404, as amended, to its Southeast corner having Coordinates of X = 1,755,768.96 and Y = 450,573.49; thence South 00 degrees 40 minutes 52 seconds West 5,417.53 feet to a point having Coordinates of X = 1,755,704.57 and Y = 445,156.34; thence North 89 degrees 14 minutes 11 seconds West 5,197.46 feet to a point on the East boundary of said State Lease No. 21904 having Coordinates of X = 1,750,507.57 and Y = 445,225.61; thence North 01 degrees 06 minutes 06 seconds East 5,349.92 feet along the East boundary of said State Lease No. 21904 to the point of beginning, containing approximately **18 acres**, all as more particularly outlined on a plat on file in the Office of Mineral Resources, Department of Natural Resources. All bearings, distances and coordinates are based on Louisiana Coordinate System of 1927, (North or South Zone), where applicable.

NOTE: The above description of the Tract nominated for lease has been provided and corrected, where required, exclusively by the nomination party. Any mineral lease selected from this Tract and awarded by the Louisiana State Mineral and Energy Board shall be without warranty of any kind, either express, implied, or statutory, including, but not limited to, the implied warranties of merchantability and fitness for a particular purpose. Should the mineral lease awarded by the Louisiana State Mineral and Energy Board be subsequently modified, cancelled or abrogated due to the existence of conflicting leases, operating agreements, private claims or other future obligations or conditions which may affect all or any portion of the leased Tract, it shall not relieve the Lessee of the obligation to pay any bonus due thereon to the Louisiana State Mineral and Energy Board, nor shall the Louisiana State Mineral and Energy Board be obligated to refund any consideration paid by the Lessor prior to such modification, cancellation, or abrogation, including, but not limited to, bonuses, rentals and royalties.

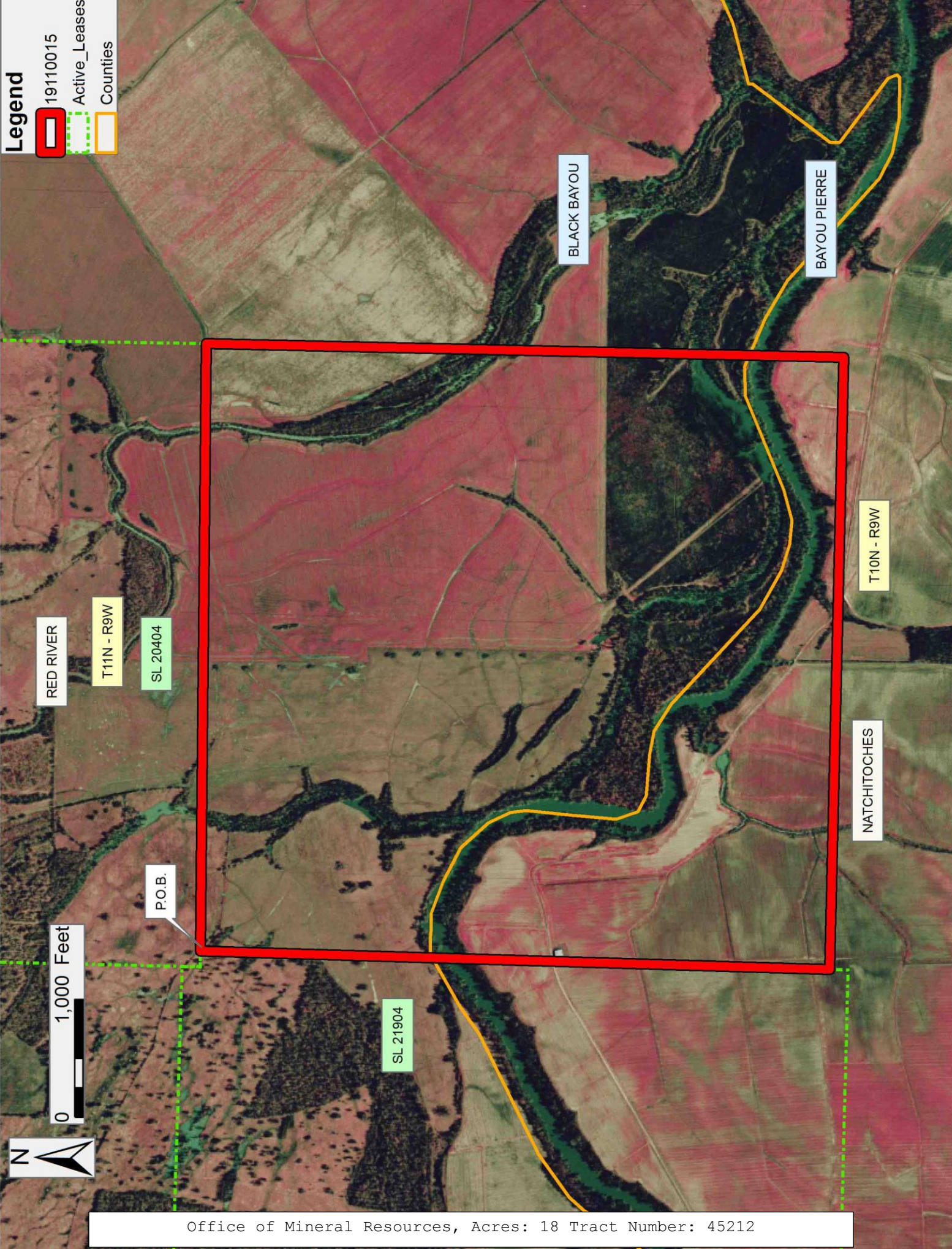
NOTE: Said lease description being limited to the surface of the earth down to a depth of 4,000 feet.

Applicant: ALJAM ENERGY

Bidder	Cash Payment	Price/ Acre	Rental	Oil	Gas	Other

Legend

- 19110015
- Active_Leases
- Counties



TRACT 45213 - Portion of Plaquemines Parish, Louisiana

The beds and bottoms of all water bodies belonging to the State of Louisiana located in together with any present lands formed by accretion to the shoreline or islands formed therein, located in Plaquemines Parish, Louisiana, owned by and not presently under mineral lease as of November 13, 2019, from the State of Louisiana, the geographical area of which is more fully described as follows: Beginning at a point being the southeast corner of State Lease No. 2566, as amended, having Coordinates of X = 2,615,271.29 and Y = 98,372.10, said point also being a point on the Louisiana Coastline, as decreed by the Supreme Court of the United States, as determined by a Special Master appointed therein, in litigation styled *United States v. State of Louisiana et al No. 9 Original*, in 1975; thence along said Louisiana Coastline the following courses and distances, to wit: Southwesterly along a straight line to a point having Coordinates of X = 2,615,196 and Y = 98,279, Southwesterly along a straight line to a point having Coordinates of X = 2,611,843 and Y = 94,130, Southwesterly along a straight line to a point having Coordinates of X = 2,610,160 and Y = 92,050, Southwesterly along a straight line to a point having Coordinates of X = 2,609,785 and Y = 91,750, Southwesterly along a straight line to a point having Coordinates of X = 2,609,180 and Y = 91,445, Northwesterly along a straight line to a point having Coordinates of X = 2,607,290 and Y = 93,040, Northeasterly along a straight line to a point having Coordinates of X = 2,607,400 and Y = 93,175, Northeasterly along a straight line to a point having Coordinates of X = 2,607,455 and Y = 93,710, Northeasterly along a straight line to a point having Coordinates of X = 2,608,665 and Y = 95,870, and Northeasterly along a straight line to a point having Coordinates of X = 2,610,458.02 and Y = 98,372.10, said point being the Southwest corner of said State Lease No. 2566, as amended; thence East 4,813.27 feet along the Southern boundary of said State Lease No. 2566, as amended, to the point of beginning, containing approximately **616.26 acres**, all as more particularly outlined on a plat on file in the Office of Mineral Resources, Department of Natural Resources. All bearings, distances and coordinates are based on Louisiana Coordinate System of 1927, (North or South Zone).

NOTE: The above description of the Tract nominated for lease has been provided and corrected, where required, exclusively by the nomination party. Any mineral lease selected from this Tract and awarded by the Louisiana State Mineral and Energy Board shall be without warranty of any kind, either express, implied, or statutory, including, but not limited to, the implied warranties of merchantability and fitness for a particular purpose. Should the mineral lease awarded by the Louisiana State Mineral and Energy Board be subsequently modified, cancelled or abrogated due to the existence of conflicting leases, operating agreements, private claims or other future obligations or conditions which may affect all or any portion of the leased Tract, it shall not relieve the Lessee of the obligation to pay any bonus due thereon to the Louisiana State Mineral and Energy Board, nor shall the Louisiana State Mineral and Energy Board be obligated to refund any consideration paid by the Lessor prior to such modification, cancellation, or abrogation, including, but not limited to, bonuses, rentals and royalties.

NOTE: The State of Louisiana does hereby reserve, and this lease shall be subject to, the imprescriptible right of surface use in the nature of a servitude in favor of the Department of Natural Resources, including its Offices and Commissions, for the sole purpose of implementing, constructing, servicing and maintaining approved coastal zone management and/or restoration projects. Utilization of any and all rights derived under this lease by the mineral lessee, its agents, successors or assigns, shall not interfere with nor hinder the reasonable surface use by the Department of Natural Resources, its Offices or Commissions, as herein above reserved.

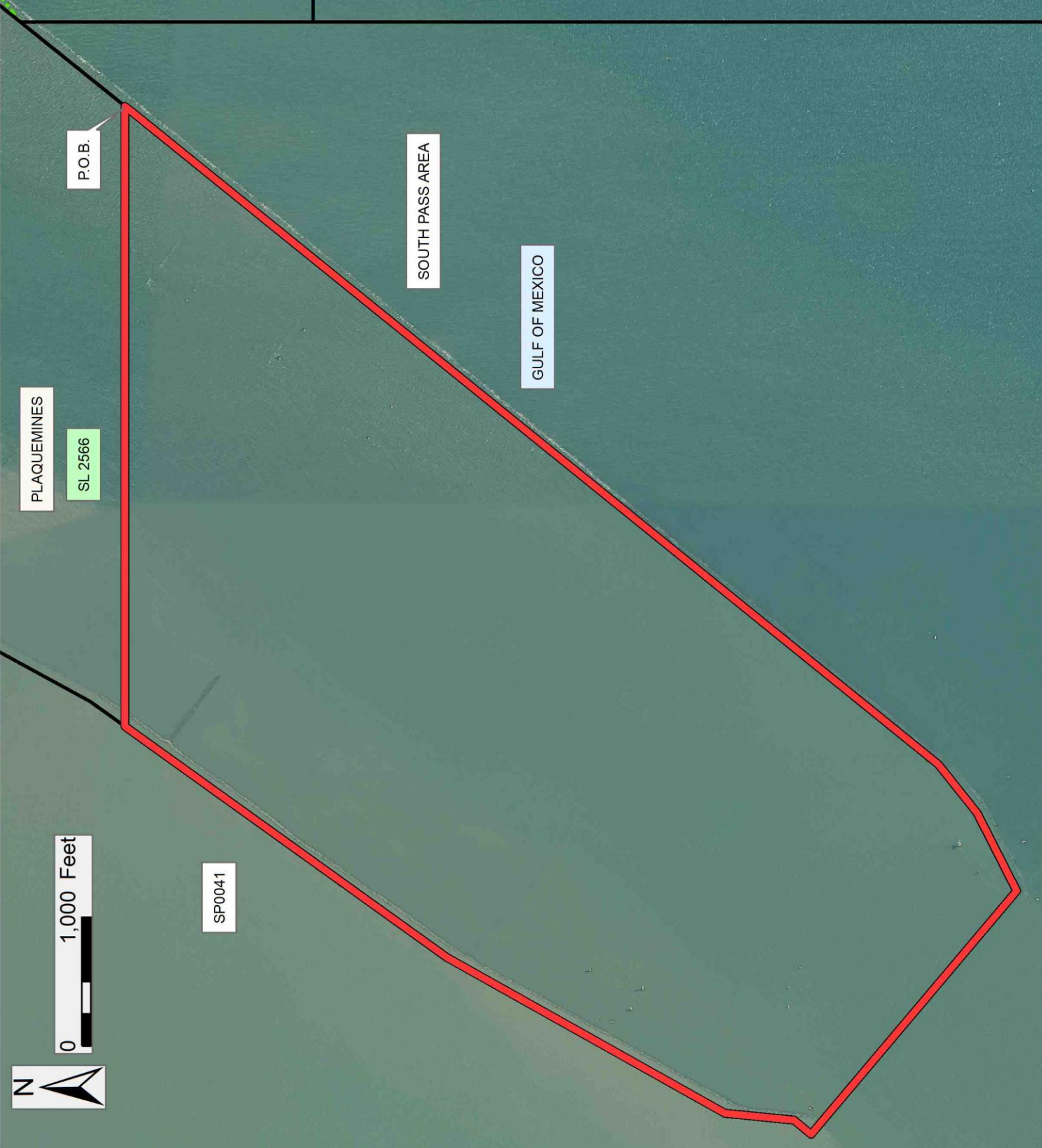
NOTE: It appears, according to our records, that a portion of this Tract is located within the restrictive safety fairway area as set out by the Corps of Engineers, U.S. Army and/or the restrictive anchorage area as set out by the U.S. Coast Guard.

Applicant: ROBERT A. SCHROEDER, INC.

Bidder	Cash Payment	Price/Acre	Rental	Oil	Gas	Other

Legend

- 19110010
- Blocks
- Active_Leases
- Counties



Office of Mineral Resources, Acres: 616.26 Tract Number: 45213