

**TRACT 45205 - Portion of Blocks 80, and 81, West Delta Area, Plaquemines Parish, Louisiana**

The beds and bottoms of all water bodies belonging to the State of Louisiana located in Blocks 80, and 81, West Delta Area, together with any present lands formed by accretion to the shoreline or islands formed therein, located in Plaquemines Parish, Louisiana, owned by and not presently under mineral lease as of November 13, 2019, from the State of Louisiana, the geographical area of which is more fully described as follows: Beginning at a point having Coordinates of X = 2,605,477.93 and Y = 102,992.10, said point being the Southeast corner of Block 81, West Delta Area; thence West 13,731.27 feet along the South Lines of Blocks 81 and 80, West Delta Area, to a point having Coordinates of X = 2,591,746.66 and Y = 102,992.10, said point being the Southwest corner of Block 80, West Delta Area, said point also being a point on the Three Mile Line, as decreed by the Supreme Court of the United States, as determined by a Special Master appointed therein, in litigation styled *United States v. State of Louisiana et al No. 9 Original*, in 1975; thence along said Three Mile Line the following courses and distances, to wit: Northeasterly along a straight line to a point having Coordinates of X = 2,592,751 and Y = 104,785; Northeasterly along an arc to the right having a radius of 18,240.60 feet and a center located at X = 2,608,665 and Y = 95,870 to a point having Coordinates of X = 2,593,838 and Y = 106,495, and Northeasterly along a straight line to a point having Coordinates of X = 2,595,027.93 and Y = 108,155.89, said point being the northernmost point of said Block 80, West Delta Area; thence East 10,450.00 feet to a point having Coordinates of X = 2,605,477.93 and Y = 108,155.89, said point being on the East Line of said Block 81, West Delta Area; thence South 5,163.79 feet along said East Line of said Block 81, West Delta Area, to the point of beginning, containing approximately **1,444.78 acres, LESS AND EXCEPT** that portion thereof, if any, lying seaward of the line three nautical miles from the coast line of Louisiana, as said three mile line has been decreed by the Supreme Court of the United States, as determined by a Special Master appointed therein, in litigation styled **United States v. State of Louisiana et al No. 9 Original**, in 1975, all as more particularly outlined on a plat in the Office of Mineral Resources, Department of Natural Resources. All bearings, distances and coordinates are based on the Louisiana Coordinate System of 1927, (South Zone).

NOTE: The above description of the Tract nominated for lease has been provided and corrected, where required, exclusively by the nomination party. Any mineral lease selected from this Tract and awarded by the Louisiana State Mineral and Energy Board shall be without warranty of any kind, either express, implied, or statutory, including, but not limited to, the implied warranties of merchantability and fitness for a particular purpose. Should the mineral lease awarded by the Louisiana State Mineral and Energy Board be subsequently modified, cancelled or abrogated due to the existence of conflicting leases, operating agreements, private claims or other future obligations or conditions which may affect all or any portion of the leased Tract, it shall not relieve the Lessee of the obligation to pay any bonus due thereon to the Louisiana State Mineral and Energy Board, nor shall the

Louisiana State Mineral and Energy Board be obligated to refund any consideration paid by the Lessor prior to such modification, cancellation, or abrogation, including, but not limited to, bonuses, rentals and royalties.

NOTE: The State of Louisiana does hereby reserve, and this lease shall be subject to, the imprescriptible right of surface use in the nature of a servitude in favor of the Department of Natural Resources, including its Offices and Commissions, for the sole purpose of implementing, constructing, servicing and maintaining approved coastal zone management and/or restoration projects. Utilization of any and all rights derived under this lease by the mineral lessee, its agents, successors or assigns, shall not interfere with nor hinder the reasonable surface use by the Department of Natural Resources, its Offices or Commissions, as herein above reserved.

Applicant: ROBERT A. SCHROEDER, INC.

Bidder	Cash Payment	Price/ Acre	Rental	Oil	Gas	Other



Legend

19110003

Blocks

Counties



**TRACT 45206 - Portion of Block 82, West Delta Area, Plaquemines Parish, Louisiana**

The beds and bottoms of all water bodies belonging to the State of Louisiana located in Block 82, West Delta Area, together with any present lands formed by accretion to the shoreline or islands formed therein, located in Plaquemines Parish, Louisiana, owned by and not presently under mineral lease as of November 13, 2019, from the State of Louisiana, the geographical area of which is more fully described as follows: Beginning at a point having Coordinates of X = 2,605,477.93 and Y = 102,992.10, said point being the Southwest corner of Block 82, West Delta Area; thence North 5,163.79 feet along the West Line of said Block 82, West Delta Area, to a point having Coordinates of X = 2,605,477.93 and Y = 108,155.89; thence East 7,185.32 feet to a point having Coordinates of X = 2,612,663.25 and Y = 108,155.89; thence South 19 degrees 01 minutes 26 seconds West 192.60 feet to a point having Coordinates of X = 2,612,600.47 and Y = 107,973.81, said point being the Northwest corner of State Lease No. 21729; thence along the Western and Southern boundaries of said State Lease No. 21729 the following courses and distances, to wit: South 00 degrees 01 minutes 51 seconds East 3,494.98 feet to a point having Coordinates of X = 2,612,602.34 and Y = 104,478.83, said point being the being the Southwest corner of said State Lease No. 21729; and East approximately 1,301 feet to a point being its southernmost Southeast corner having a Coordinate of Y = 104,478.83, said point also being a point on the boundary of State Lease No. 2566, as amended, said point also being a point on the Louisiana Coastline, as decreed by the Supreme Court of the United States, as determined by a Special Master appointed therein, in litigation styled *United States v. State of Louisiana et al No. 9 Original*, in 1975; thence Southwesterly along a straight line along said Western boundary of State Lease No. 2566, as amended, and said Louisiana Coastline to a point having Coordinates of X = 2,613,018.94 and Y = 102,992.10, said point also being the Southeast corner of said Block 82, West Delta Area; thence West 7,541.00 feet along the South Line of said Block 82, West Delta Area, to the point of beginning, **LESS AND EXCEPT** any portion of said State Lease No. 2566 that may lie within the above descried tract, containing approximately **873.92 acres**, all as more particularly outlined on a plat on file in the Office of Mineral Resources, Department of Natural Resources. All bearings, distances and coordinates are based on Louisiana Coordinate System of 1927, (North or South Zone).

NOTE: The above description of the Tract nominated for lease has been provided and corrected, where required, exclusively by the nomination party. Any mineral lease selected from this Tract and awarded by the Louisiana State Mineral and Energy Board shall be without warranty of any kind, either express, implied, or statutory, including, but not limited to, the implied warranties of merchantability and fitness for a particular purpose. Should the mineral lease awarded by the Louisiana State Mineral and Energy Board be subsequently modified, cancelled or abrogated due to the existence of conflicting leases, operating agreements, private claims or other future obligations or conditions which may affect all or any portion of the leased Tract, it shall not relieve the Lessee of the obligation to pay any bonus

due thereon to the Louisiana State Mineral and Energy Board, nor shall the Louisiana State Mineral and Energy Board be obligated to refund any consideration paid by the Lessor prior to such modification, cancellation, or abrogation, including, but not limited to, bonuses, rentals and royalties.

NOTE: The State of Louisiana does hereby reserve, and this lease shall be subject to, the imprescriptible right of surface use in the nature of a servitude in favor of the Department of Natural Resources, including its Offices and Commissions, for the sole purpose of implementing, constructing, servicing and maintaining approved coastal zone management and/or restoration projects. Utilization of any and all rights derived under this lease by the mineral lessee, its agents, successors or assigns, shall not interfere with nor hinder the reasonable surface use by the Department of Natural Resources, its Offices or Commissions, as herein above reserved.

NOTE: It appears, according to our records, that a portion of this Tract is located within the restrictive safety fairway area as set out by the Corps of Engineers, U.S. Army and/or the restrictive anchorage area as set out by the U.S. Coast Guard.

Applicant: ROBERT A. SCHROEDER, INC.

Bidder	Cash Payment	Price/ Acre	Rental	Oil	Gas	Other

**Legend**

19110009

Blocks

Active\_Leases

Counties

N

0 1,000 Feet

PLAQUEMINES

WD0082

WEST DELTA AREA

Office of Mineral Resources, Acres: 873.92 Tract Number: 45206

SL 21729

SL 2566

SL 21642

WD0081

P.O.B.

WD0084

SP0041

SOUTH PASS AREA

GULF OF MEXICO

**TRACT 45207 - Portion of Blocks 84, and 85, West Delta Area, Plaquemines Parish, Louisiana**

The beds and bottoms of all water bodies belonging to the State of Louisiana located in Blocks 84, and 85, West Delta Area, together with any present lands formed by accretion to the shoreline or islands formed therein, located in Plaquemines Parish, Louisiana, owned by and not presently under mineral lease as of November 13, 2019, from the State of Louisiana, the geographical area of which is more fully described as follows: Beginning at a point on the East Line of Block 84, West Delta Area having Coordinates of X = 2,605,477.93 and Y = 98,257.36, said point being the Northeast corner of State Operating Agreement A0232; thence West 8,450.00 feet along the North boundary of said State Operating Agreement A0232 to a point being its Northwest corner having Coordinates of X = 2,597,027.93 and Y = 98,257.36; thence West 7,237.88 feet to a point having Coordinates of X = 2,589,790.05 and Y = 98,257.36, said point also being a point on the Three Mile Line, as decreed by the Supreme Court of the United States, as determined by a Special Master appointed therein, in litigation styled *United States v. State of Louisiana et al No. 9 Original*, in 1975; thence along said Three Mile Line the following courses and distances, to wit: Northeasterly along an arc to the right having a radius of 18,240.60 feet and a center located at X = 2,607,455 and Y = 93,710 to a point having Coordinates of X = 2,591,541 and Y = 102,625, and Northeasterly along a straight line to a point having Coordinates of X = 2,591,746.66 and Y = 102,992.10, said point being on the North line of said Block 85, West Delta Area; thence East 13,731.27 feet along the North Lines of Blocks 85 and 84, West Delta Area, to a point having Coordinates of X = 2,605,477.93 and Y = 102,992.10, said point being the Northeast corner of said Block 84, West Delta Area; thence South 4,734.74 feet along said East Line of said Block 84, West Delta Area, to the point of beginning, containing approximately **1,612.77 acres, LESS AND EXCEPT** that portion thereof, if any, lying seaward of the line three nautical miles from the coast line of Louisiana, as said three mile line has been decreed by the Supreme Court of the United States, as determined by a Special Master appointed therein, in litigation styled **United States v. State of Louisiana et al No. 9 Original**, in 1975, all as more particularly outlined on a plat in the Office of Mineral Resources, Department of Natural Resources. All bearings, distances and coordinates are based on the Louisiana Coordinate System of 1927, (South Zone).

NOTE: The above description of the Tract nominated for lease has been provided and corrected, where required, exclusively by the nomination party. Any mineral lease selected from this Tract and awarded by the Louisiana State Mineral and Energy Board shall be without warranty of any kind, either express, implied, or statutory, including, but not limited to, the implied warranties of merchantability and fitness for a particular purpose. Should the mineral lease awarded by the Louisiana State Mineral and Energy Board be subsequently modified, cancelled or abrogated due to the existence of conflicting leases, operating agreements, private claims or other future obligations or conditions which may affect all or any portion of the leased Tract, it shall not relieve the Lessee of the obligation to pay any bonus

due thereon to the Louisiana State Mineral and Energy Board, nor shall the Louisiana State Mineral and Energy Board be obligated to refund any consideration paid by the Lessor prior to such modification, cancellation, or abrogation, including, but not limited to, bonuses, rentals and royalties.

NOTE: The State of Louisiana does hereby reserve, and this lease shall be subject to, the imprescriptible right of surface use in the nature of a servitude in favor of the Department of Natural Resources, including its Offices and Commissions, for the sole purpose of implementing, constructing, servicing and maintaining approved coastal zone management and/or restoration projects. Utilization of any and all rights derived under this lease by the mineral lessee, its agents, successors or assigns, shall not interfere with nor hinder the reasonable surface use by the Department of Natural Resources, its Offices or Commissions, as herein above reserved.

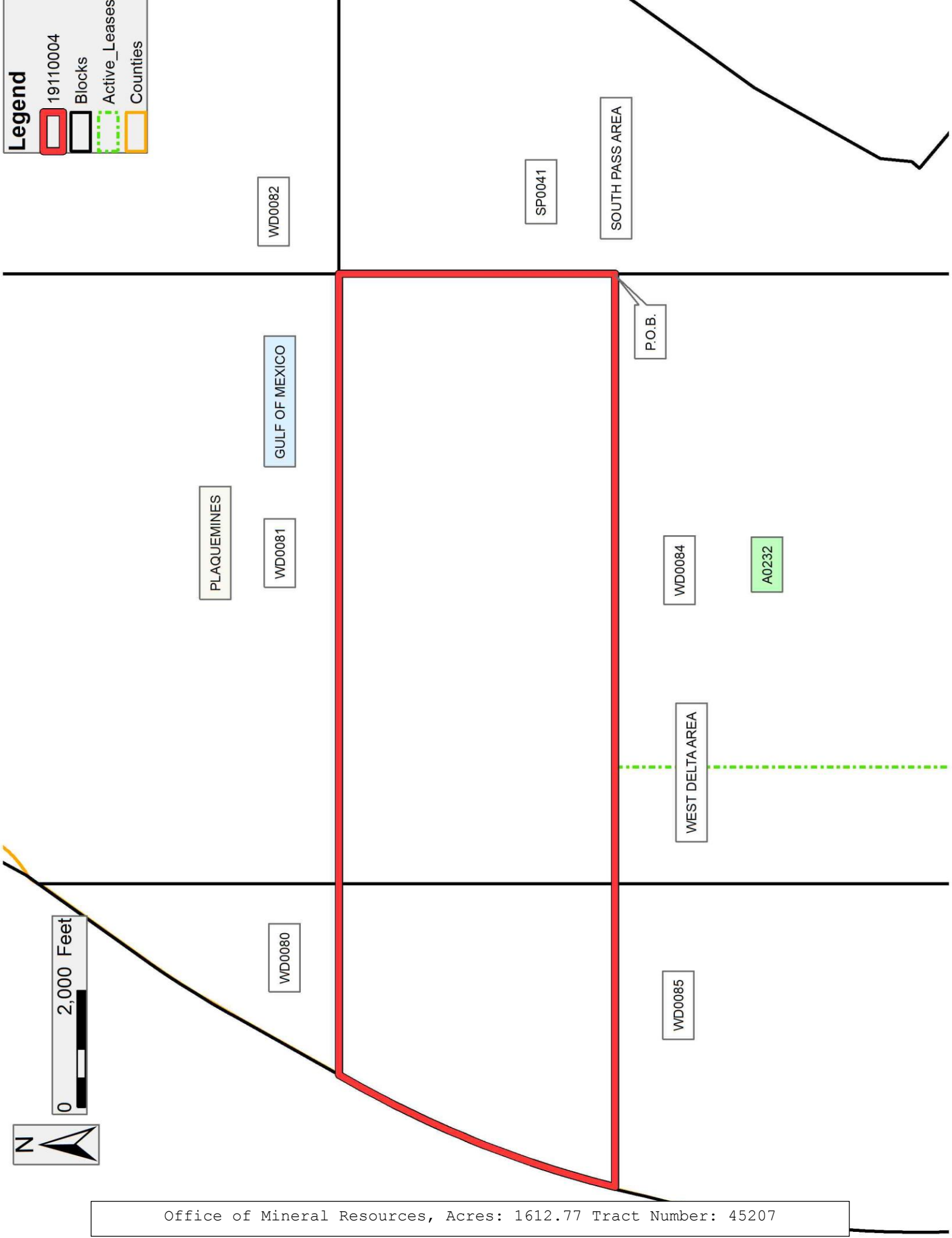
Applicant: ROBERT A. SCHROEDER, INC.

Bidder	Cash Payment	Price/ Acre	Rental	Oil	Gas	Other



**Legend**

- 19110004
- Blocks
- Active\_Leases
- Counties



**TRACT 45208 - Portion of Block 41, South Pass Area, Plaquemines Parish, Louisiana**

The beds and bottoms of all water bodies belonging to the State of Louisiana located in Block 41, South Pass Area, together with any present lands formed by accretion to the shoreline or islands formed therein, located in Plaquemines Parish, Louisiana, owned by and not presently under mineral lease as of November 13, 2019, from the State of Louisiana, the geographical area of which is more fully described as follows: Beginning at a point having Coordinates of X = 2,615,928.00 and Y = 89,350.00, said point being on the East Line of Block 41, South Pass Area; thence West 10,450.07 feet to a point having Coordinates of X = 2,605,477.93 and Y = 89,350.00, said point being the West Line of said Block 41, South Pass Area; thence North 13,642.10 feet along said West Line of said Block 41, South Pass Area, to a point having Coordinates of X = 2,605,477.93 and Y = 102,992.10, said point being the Northwest corner of said Block 41, South Pass Area; thence East 5,553.06 feet along the North Line of said Block 41, South Pass Area, to a point having Coordinates of X = 2,611,030.99 and Y = 102,992.10, said point being the Northwest corner of State Lease No. 21642; thence along the Western and Southern boundaries of State Lease No. 21642 the following courses and distances, to wit: South 29 degrees 01 minutes 30 seconds West 1,305.81 feet to a point having Coordinates of X = 2,610,397.42 and Y = 101,850.29, said point being the Southwest corner of said State Lease No. 21642, and East 2,000.00 feet to a point having Coordinates of X = 2,612,397.42 and Y = 101,850.29, said point being the Southeast corner of said State Lease No. 21642, said point also being on the Western boundary of State Lease No. 2566, as amended, said point also being a point on the Louisiana Coastline, as decreed by the Supreme Court of the United States, as determined by a Special Master appointed therein, in litigation styled *United States v. State of Louisiana et al No. 9 Original*, in 1975; thence along said Western boundary of State Lease No. 2566, as amended, and said Louisiana Coastline the following courses and distances, to wit: Southwesterly along a straight line to a point having Coordinates of X = 2,610,650 and Y = 98,640, and Southwesterly along a straight line to a point having Coordinates of X = 2,610,458.02 and Y = 98,372.10, said point also being the Southwest corner of said State Lease No. 2566, as amended; thence continue along the Western, Southern and Eastern boundaries of said Louisiana Coastline the following courses and distances, to wit: Southwesterly along a straight line to a point having Coordinates of X = 2,608,665 and Y = 95,870, Southwesterly along a straight line to a point having Coordinates of X = 2,607,455 and Y = 93,710, Southwesterly along a straight line to a point having Coordinates of X = 2,607,400 and Y = 93,175, Southwesterly along a straight line to a point having Coordinates of X = 2,607,290 and Y = 93,040, Southeasterly along a straight line to a point having Coordinates of X = 2,609,180 and Y = 91,445, Northeasterly along a straight to a point having Coordinates of X = 2,609,785 and Y = 91,750, Northeasterly along a straight to a point having Coordinates of X = 2,610,160 and Y = 92,050, Northeasterly along a straight to a point having Coordinates of X = 2,611,843 and Y = 94,130, Northeasterly along a straight to a point having Coordinates of X = 2,615,196 and Y = 98,279, and Northeasterly along a straight to a point having Coordinates of X =

2,615,271.29 and Y = 98,372.10, said point also being the southeast corner of said State Lease No. 2566, as amended, Northeasterly along a straight line to a point having Coordinates of X = X = 2,615,885 and Y = 99,131, and Northeasterly along a straight line to a point having Coordinates of X = 2,615,928.00 and Y = 99,185.13, said point being on the easternmost Northeast corner of said Block 41, South Pass Area; thence South 9,835.01 feet along said East Line of said Block 41, South Pass Area, to the point of beginning, beginning, **LESS AND EXCEPT** any portion of said State Lease No. 2566 that may lie within the above described tract, containing approximately containing approximately **2,168.31 acres**, all as more particularly outlined on a plat on file in the Office of Mineral Resources, Department of Natural Resources. All bearings, distances and coordinates are based on Louisiana Coordinate System of 1927, (North or South Zone).

NOTE: The above description of the Tract nominated for lease has been provided and corrected, where required, exclusively by the nomination party. Any mineral lease selected from this Tract and awarded by the Louisiana State Mineral and Energy Board shall be without warranty of any kind, either express, implied, or statutory, including, but not limited to, the implied warranties of merchantability and fitness for a particular purpose. Should the mineral lease awarded by the Louisiana State Mineral and Energy Board be subsequently modified, cancelled or abrogated due to the existence of conflicting leases, operating agreements, private claims or other future obligations or conditions which may affect all or any portion of the leased Tract, it shall not relieve the Lessee of the obligation to pay any bonus due thereon to the Louisiana State Mineral and Energy Board, nor shall the Louisiana State Mineral and Energy Board be obligated to refund any consideration paid by the Lessor prior to such modification, cancellation, or abrogation, including, but not limited to, bonuses, rentals and royalties.

NOTE: The State of Louisiana does hereby reserve, and this lease shall be subject to, the imprescriptible right of surface use in the nature of a servitude in favor of the Department of Natural Resources, including its Offices and Commissions, for the sole purpose of implementing, constructing, servicing and maintaining approved coastal zone management and/or restoration projects. Utilization of any and all rights derived under this lease by the mineral lessee, its agents, successors or assigns, shall not interfere with nor hinder the reasonable surface use by the Department of Natural Resources, its Offices or Commissions, as herein above reserved.

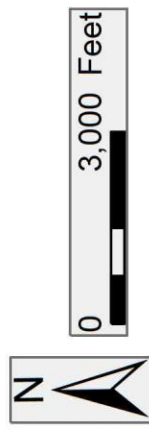
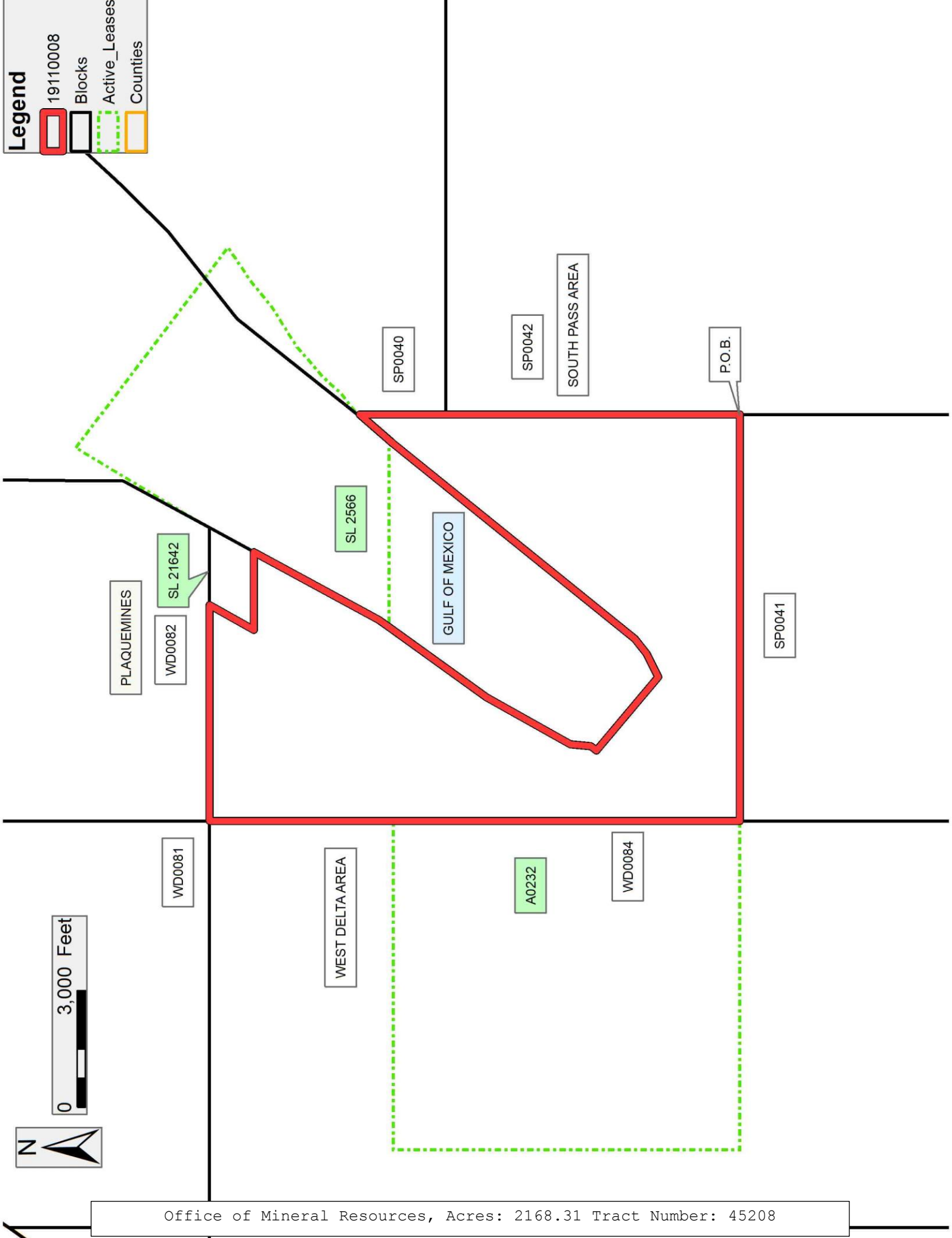
NOTE: It appears, according to our records, that a portion of this Tract is located within the restrictive safety fairway area as set out by the Corps of Engineers, U.S. Army and/or the restrictive anchorage area as set out by the U.S. Coast Guard.

Applicant: ROBERT A. SCHROEDER, INC.

Bidder	Cash Payment	Price/ Acre	Rental	Oil	Gas	Other

**Legend**

- 19110008
- Blocks
- Active\_Leases
- Counties



**TRACT 45209 - Portion of Blocks 84, and 85, West Delta Area, Plaquemines Parish, Louisiana**

The beds and bottoms of all water bodies belonging to the State of Louisiana located in Blocks 84, and 85, West Delta Area, together with any present lands formed by accretion to the shoreline or islands formed therein, located in Plaquemines Parish, Louisiana, owned by and not presently under mineral lease as of November 13, 2019, from the State of Louisiana, the geographical area of which is more fully described as follows: Beginning at a point having Coordinates of X = 2,597,027.93 and Y = 89,350.00, said point being the Southwest corner of State Operating Agreement A0232; thence West 7,601.51 feet to a point having Coordinates of X = 2,589,426.42 and Y = 89,350.00, said point also being a point on the Three Mile Line, as decreed by the Supreme Court of the United States, as determined by a Special Master appointed therein, in litigation styled *United States v. State of Louisiana et al No. 9 Original*, in 1975; thence along said Three Mile Line the following courses and distances, to wit: Northeasterly along an arc to the right having a radius of 18,240.60 feet and a center located at X = 2,607,290 and Y = 93,040 to a point having Coordinates of X = 2,589,664 and Y = 97,736, and Northeasterly along an arc to the right having a radius of 18,240.60 feet and a center located at X = 2,607,455 and Y = 93,710 to a point having Coordinates of X = 2,589,790.05 and Y = 98,257.36; thence East 7,237.88 feet to a point having Coordinates of X = 2,597,027.93 and Y = 98,257.36, said point being the Northwest corner of said State Operating Agreement A0232; thence South 8,907.36 feet along the Western boundary of said State Operating Agreement A0232 to the point of beginning, containing approximately **1,590.88 acres, LESS AND EXCEPT** that portion thereof, if any, lying seaward of the line three nautical miles from the coast line of Louisiana, as said three mile line has been decreed by the Supreme Court of the United States, as determined by a Special Master appointed therein, in litigation styled **United States v. State of Louisiana et al No. 9 Original**, in 1975, all as more particularly outlined on a plat in the Office of Mineral Resources, Department of Natural Resources. All bearings, distances and coordinates are based on the Louisiana Coordinate System of 1927, (South Zone).

NOTE: The above description of the Tract nominated for lease has been provided and corrected, where required, exclusively by the nomination party. Any mineral lease selected from this Tract and awarded by the Louisiana State Mineral and Energy Board shall be without warranty of any kind, either express, implied, or statutory, including, but not limited to, the implied warranties of merchantability and fitness for a particular purpose. Should the mineral lease awarded by the Louisiana State Mineral and Energy Board be subsequently modified, cancelled or abrogated due to the existence of conflicting leases, operating agreements, private claims or other future obligations or conditions which may affect all or any portion of the leased Tract, it shall not relieve the Lessee of the obligation to pay any bonus due thereon to the Louisiana State Mineral and Energy Board, nor shall the Louisiana State Mineral and Energy Board be obligated to refund any consideration paid by the Lessor prior to such modification, cancellation, or abrogation, including, but not limited to, bonuses, rentals and royalties.

NOTE: The State of Louisiana does hereby reserve, and this lease shall be subject to, the imprescriptible right of surface use in the nature of a servitude in favor of the Department of Natural Resources, including its Offices and Commissions, for the sole purpose of implementing, constructing, servicing and maintaining approved coastal zone management and/or restoration projects. Utilization of any and all rights derived under this lease by the mineral lessee, its agents, successors or assigns, shall not interfere with nor hinder the reasonable surface use by the Department of Natural Resources, its Offices or Commissions, as herein above reserved.

Applicant: ROBERT A. SCHROEDER, INC.

Bidder	Cash Payment	Price/ Acre	Rental	Oil	Gas	Other



**Legend**

- 19110005
- Blocks
- Active\_Leases
- Counties

PLAQUEMINES

A0232

WEST DELTA AREA

P.O.B.

WD0084

GULF OF MEXICO

WD0085



**TRACT 45210 - Portion of Blocks 84, and 85, West Delta Area, Plaquemines Parish, Louisiana**

The beds and bottoms of all water bodies belonging to the State of Louisiana located in Blocks 84, and 85, West Delta Area, together with any present lands formed by accretion to the shoreline or islands formed therein, located in Plaquemines Parish, Louisiana, owned by and not presently under mineral lease as of November 13, 2019, from the State of Louisiana, the geographical area of which is more fully described as follows: Beginning at a point having Coordinates of X = 2,605,477.93 and Y = 82,150.00, said point being the Southeast corner of Block 84, West Delta Area; thence West 12,821.02 feet along the South Lines of Blocks 84 and 85, West Delta Area, to a point having Coordinates of X = 2,592,656.91 and Y = 82,150.00, said point being a point on the Three Mile Line, as decreed by the Supreme Court of the United States, as determined by a Special Master appointed therein, in litigation styled *United States v. State of Louisiana et al No. 9 Original*, in 1975; thence Northeasterly along said Three Mile Line along an arc to the right having a radius of 18,240.60 feet and a center located at X = 2,607,290 and Y = 93,040 to a point having Coordinates of X = 2,589,426.42 and Y = 89,350.00; thence East 7,601.51 feet to a point having Coordinates of X = 2,597,027.93 and Y = 89,350.00, said point being the Southwest corner of State Operating Agreement A0232; thence East 8,450.00 feet along the Southern boundary of said of State Operating Agreement A0232 to a point being its Southeast corner having Coordinates of X = 2,605,477.93 and Y = 89,350.00, said point also being on the East Line of said Block 84, West Delta Area; thence South 7,200.00 feet along the East Line of said Block 84, West Delta Area, to the point of beginning, containing approximately **2,438.44 acres, LESS AND EXCEPT** that portion thereof, if any, lying seaward of the line three nautical miles from the coast line of Louisiana, as said three mile line has been decreed by the Supreme Court of the United States, as determined by a Special Master appointed therein, in litigation styled **United States v. State of Louisiana et al No. 9 Original**, in 1975, all as more particularly outlined on a plat in the Office of Mineral Resources, Department of Natural Resources. All bearings, distances and coordinates are based on the Louisiana Coordinate System of 1927, (South Zone).

NOTE: The above description of the Tract nominated for lease has been provided and corrected, where required, exclusively by the nomination party. Any mineral lease selected from this Tract and awarded by the Louisiana State Mineral and Energy Board shall be without warranty of any kind, either express, implied, or statutory, including, but not limited to, the implied warranties of merchantability and fitness for a particular purpose. Should the mineral lease awarded by the Louisiana State Mineral and Energy Board be subsequently modified, cancelled or abrogated due to the existence of conflicting leases, operating agreements, private claims or other future obligations or conditions which may affect all or any portion of the leased Tract, it shall not relieve the Lessee of the obligation to pay any bonus due thereon to the Louisiana State Mineral and Energy Board, nor shall the Louisiana State Mineral and Energy Board be obligated to refund any

consideration paid by the Lessor prior to such modification, cancellation, or abrogation, including, but not limited to, bonuses, rentals and royalties.

NOTE: The State of Louisiana does hereby reserve, and this lease shall be subject to, the imprescriptible right of surface use in the nature of a servitude in favor of the Department of Natural Resources, including its Offices and Commissions, for the sole purpose of implementing, constructing, servicing and maintaining approved coastal zone management and/or restoration projects. Utilization of any and all rights derived under this lease by the mineral lessee, its agents, successors or assigns, shall not interfere with nor hinder the reasonable surface use by the Department of Natural Resources, its Offices or Commissions, as herein above reserved.

NOTE: It appears, according to our records, that a portion of this Tract is located within the restrictive safety fairway area as set out by the Corps of Engineers, U.S. Army and/or the restrictive anchorage area as set out by the U.S. Coast Guard.

Applicant: ROBERT A. SCHROEDER, INC.

Bidder	Cash Payment	Price/ Acre	Rental	Oil	Gas	Other

**Legend**

- 19110006
- Blocks
- Active\_Leases
- Counties



**TRACT 45211 - Portion of Block 41, South Pass Area, Plaquemines Parish, Louisiana**

The beds and bottoms of all water bodies belonging to the State of Louisiana located in Block 41, South Pass Area, together with any present lands formed by accretion to the shoreline or islands formed therein, located in Plaquemines Parish, Louisiana, owned by and not presently under mineral lease as of November 13, 2019, from the State of Louisiana, the geographical area of which is more fully described as follows: Beginning at a point having Coordinates of X = 2,615,928.00 and Y = 82,150.00, said point being the Southeast corner of Block 41, South Pass Area; thence West 10,450.07 feet along the South Line of said Block 41, South Pass Area, to a point being its Southwest corner having Coordinates of X = 2,605,477.93 and Y = 82,150.00; thence North 7,200.00 feet along the West Line of said Block 41, South Pass Area, to a point having Coordinates of X = 2,605,477.93 and Y = 89,350.00; thence East 10,450.07 feet to a point having Coordinates of X = 2,615,928.00 and Y = 89,350.00, said point being on the East Line of said Block 41, South Pass Area; thence South 7,200.00 feet along said East Line of said Block 41, South Pass Area, to the point of beginning, containing approximately **1,727.28 acres**, all as more particularly outlined on a plat on file in the Office of Mineral Resources, Department of Natural Resources. All bearings, distances and coordinates are based on Louisiana Coordinate System of 1927, (North or South Zone).

NOTE: The above description of the Tract nominated for lease has been provided and corrected, where required, exclusively by the nomination party. Any mineral lease selected from this Tract and awarded by the Louisiana State Mineral and Energy Board shall be without warranty of any kind, either express, implied, or statutory, including, but not limited to, the implied warranties of merchantability and fitness for a particular purpose. Should the mineral lease awarded by the Louisiana State Mineral and Energy Board be subsequently modified, cancelled or abrogated due to the existence of conflicting leases, operating agreements, private claims or other future obligations or conditions which may affect all or any portion of the leased Tract, it shall not relieve the Lessee of the obligation to pay any bonus due thereon to the Louisiana State Mineral and Energy Board, nor shall the Louisiana State Mineral and Energy Board be obligated to refund any consideration paid by the Lessor prior to such modification, cancellation, or abrogation, including, but not limited to, bonuses, rentals and royalties.

NOTE: The State of Louisiana does hereby reserve, and this lease shall be subject to, the imprescriptible right of surface use in the nature of a servitude in favor of the Department of Natural Resources, including its Offices and Commissions, for the sole purpose of implementing, constructing, servicing and maintaining approved coastal zone management and/or restoration projects. Utilization of any and all rights derived under this lease by the mineral lessee, its agents, successors or assigns, shall not interfere with nor hinder the reasonable surface use by the Department of Natural Resources, its Offices or Commissions, as herein above reserved.

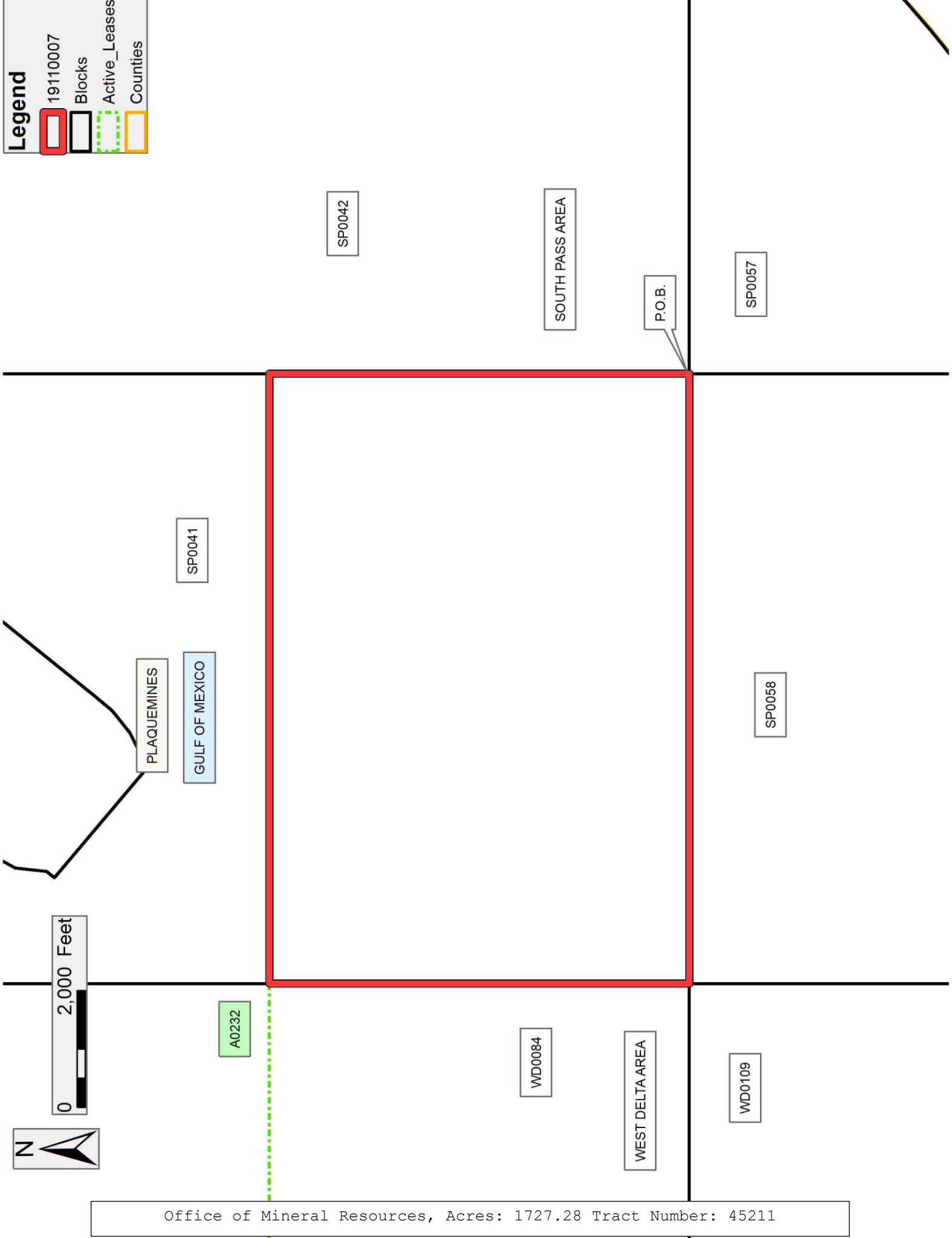
NOTE: It appears, according to our records, that a portion of this Tract is located within the restrictive safety fairway area as set out by the Corps of Engineers, U.S. Army and/or the restrictive anchorage area as set out by the U.S. Coast Guard.

Applicant: ROBERT A. SCHROEDER, INC.

Bidder	Cash Payment	Price/ Acre	Rental	Oil	Gas	Other

**Legend**

- 19110007
- Blocks
- Active\_Leases
- Counties



Office of Mineral Resources, Acres: 1727.28 Tract Number: 45211