

**TRACT 45011 - St. Mary Parish, Louisiana**

All of the lands now or formerly constituting the beds and bottoms of all water bodies of every nature and description as to which title is vested in the State of Louisiana, together with all islands arising therein and other lands formed by accretion or by reliction, where allowed by law, excepting tax adjudicated lands, and not presently under mineral lease on November 14, 2018, situated in St. Mary Parish, Louisiana, and more particularly described as follows: Beginning at a point having Coordinates of X = 2,045,719.38 and Y = 380,991.76; thence East 13,200.00 feet to a point having Coordinates of X = 2,058,919.38 and Y = 380,991.76; thence South 5,280.00 feet to a point having Coordinates of X = 2,058,919.38 and Y = 375,711.76; thence West 13,200.00 feet to a point having Coordinates of X = 2,045,719.38 and Y = 375,711.76; thence North 5,280.00 feet to the point of beginning, containing approximately **1,133 acres**, all as more particularly outlined on a plat on file in the Office of Mineral Resources, Department of Natural Resources. All bearings, distances and coordinates are based on Louisiana Coordinate System of 1927, (North or South Zone), where applicable.

NOTE: The above description of the Tract nominated for lease has been provided and corrected, where required, exclusively by the nomination party. Any mineral lease selected from this Tract and awarded by the Louisiana State Mineral and Energy Board shall be without warranty of any kind, either express, implied, or statutory, including, but not limited to, the implied warranties of merchantability and fitness for a particular purpose. Should the mineral lease awarded by the Louisiana State Mineral and Energy Board be subsequently modified, cancelled or abrogated due to the existence of conflicting leases, operating agreements, private claims or other future obligations or conditions which may affect all or any portion of the leased Tract, it shall not relieve the Lessee of the obligation to pay any bonus due thereon to the Louisiana State Mineral and Energy Board, nor shall the Louisiana State Mineral and Energy Board be obligated to refund any consideration paid by the Lessor prior to such modification, cancellation, or abrogation, including, but not limited to, bonuses, rentals and royalties.

NOTE: The State of Louisiana does hereby reserve, and this lease shall be subject to, the imprescriptible right of surface use in the nature of a servitude in favor of the Department of Natural Resources, including its Offices and Commissions, for the sole purpose of implementing, constructing, servicing and maintaining approved coastal zone management and/or restoration projects. Utilization of any and all rights derived under this lease by the mineral lessee, its agents, successors or assigns, shall not interfere with nor hinder the reasonable surface use by the Department of Natural Resources, its Offices or Commissions, as herein above reserved.

Applicant: THEOPHILUS OIL, GAS & LAND SERVICES, LLC

Bidder	Cash Payment	Price/Acre	Rental	Oil	Gas	Other



Legend



18110022



0 3,000 Feet

ST MARY

P.O.B.

LAKE PALOURDE

T16S - R13E



**TRACT 45012 - Portion of Blocks 18, and 19, Breton Sound Area, Plaquemines Parish, Louisiana**

All of the lands now or formerly constituting the beds and bottoms of all water bodies of every nature and description as to which title is vested in the State of Louisiana, together with all islands arising therein and other lands formed by accretion or by reliction, where allowed by law, excepting tax adjudicated lands, and not presently under mineral lease on November 14, 2018, situated in Plaquemines Parish, Louisiana, and more particularly described as follows: Beginning at a point within Block 18, Breton Sound Area having Coordinates of X = 2,661,161.00 and Y = 349,468.00; thence East 14,000.00 feet to a point within Block 19, Breton Sound Area having Coordinates of X = 2,675,161.00 and Y = 349,468.00; thence South 1,566.80 feet to a point on the boundary of State Lease No. 21645 having Coordinates of X = 2,675,161.00 and Y = 347,901.20; thence along the boundary of said State Lease No. 21645 the following courses: West 82.20 feet to a point having Coordinates of X = 2,675,078.80 and Y = 347,901.20, South 808.40 feet to a point having Coordinates of X = 2,675,078.80 and Y = 347,092.80, and East 82.20 feet to a point having Coordinates of X = 2,675,161.00 and Y = 347,092.80; thence South 3,624.80 feet to a point having Coordinates of X = 2,675,161.00 and Y = 343,468.00; thence West 5,349.82 feet to a point on the boundary of State Lease No. 16610, as amended having Coordinates of X = 2,669,811.18 and Y = 343,468.00; thence along the boundary of said State Lease No. 16610 the following courses: North 49 degrees 38 minutes 08 seconds West 1,523.97 feet to a point having Coordinates of X = 2,668,650.00 and Y = 344,455.00 and West 832.00 feet to the Southeast corner of State Lease No. 20433 having Coordinates of X = 2,667,818.00 and Y = 344,455.00; thence along the boundary of said State Lease No. 20433 the following courses: North 3,079.00 feet to a point having Coordinates of X = 2,667,818.00 and Y = 347,534.00, West 2,968.00 feet to a point having Coordinates of X = 2,664,850.00 and Y = 347,534.00 and South 3,079.00 feet to its Southwest corner and the Northwest corner of said State Lease No. 16610, also being a point on the common boundary of said Block 18 and said Block 19, having Coordinates of X = 2,664,850.00 and Y = 344,455.00; thence South 987.00 feet along the boundary of said State Lease No. 16610 to a point having Coordinates of X = 2,664,850.00 and Y = 343,468.00; thence West 3,689.00 feet to a point within said Block 18 having Coordinates of X = 2,661,161.00 and Y = 343,468.00; thence North 6,000.00 feet to the point of beginning, containing approximately **1,617.80 acres**, all as more particularly outlined on a plat on file in the Office of Mineral Resources, Department of Natural Resources. All bearings, distances and coordinates are based on Louisiana Coordinate System of 1927, (North or South Zone), where applicable.

NOTE: The above description of the Tract nominated for lease has been provided and corrected, where required, exclusively by the nomination party. Any mineral lease selected from this Tract and awarded by the Louisiana State Mineral and Energy Board shall be without warranty of any kind, either express, implied, or statutory, including, but not limited to, the implied warranties of merchantability and fitness for a particular purpose. Should the mineral lease awarded by the Louisiana State Mineral and Energy Board be

subsequently modified, cancelled or abrogated due to the existence of conflicting leases, operating agreements, private claims or other future obligations or conditions which may affect all or any portion of the leased Tract, it shall not relieve the Lessee of the obligation to pay any bonus due thereon to the Louisiana State Mineral and Energy Board, nor shall the Louisiana State Mineral and Energy Board be obligated to refund any consideration paid by the Lessor prior to such modification, cancellation, or abrogation, including, but not limited to, bonuses, rentals and royalties.

NOTE: The State of Louisiana does hereby reserve, and this lease shall be subject to, the imprescriptible right of surface use in the nature of a servitude in favor of the Department of Natural Resources, including its Offices and Commissions, for the sole purpose of implementing, constructing, servicing and maintaining approved coastal zone management and/or restoration projects. Utilization of any and all rights derived under this lease by the mineral lessee, its agents, successors or assigns, shall not interfere with nor hinder the reasonable surface use by the Department of Natural Resources, its Offices or Commissions, as herein above reserved.

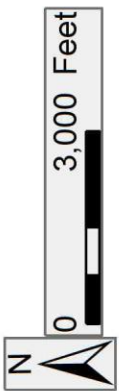
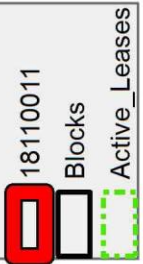
NOTE: It appears, according to our records, that a portion of this Tract is located within the restrictive safety fairway area as set out by the Corps of Engineers, U.S. Army and/or the restrictive anchorage area as set out by the U.S. Coast Guard.

NOTE: This tract is located in an area designated by the Louisiana Legislature or the Wildlife and Fisheries Commission as a Public Oyster Seed Ground, Reservation, or area of Calcasieu or Sabine Lake. Proposed projects occurring in these areas will be evaluated on a case by case basis by Louisiana Department of Wildlife & Fisheries. Modifications to proposed project features including, but not limited to, access routes, well sites, flowlines, and appurtenant structures maybe required by the Louisiana Department of Wildlife and Fisheries. In addition, compensatory mitigation will be required to offset unavoidable habitat impacts.

Applicant: KARE-SUE ENERGY, INC.

Bidder	Cash Payment	Price/Acre	Rental	Oil	Gas	Other

**Legend**



PLAQUEMINES

BS0014

P.O.B.

BRETON SOUND AREA

GULF OF MEXICO

BS0018

SL 21645

BS0019

SL 20433

SL 16610

BS0030

**TRACT 45013 - Portion of Blocks 18, 19, 30, and 31, Breton Sound Area, Plaquemines Parish, Louisiana**

All of the lands now or formerly constituting the beds and bottoms of all water bodies of every nature and description as to which title is vested in the State of Louisiana, together with all islands arising therein and other lands formed by accretion or by reliction, where allowed by law, excepting tax adjudicated lands, and not presently under mineral lease on November 14, 2018, situated in Plaquemines Parish, Louisiana, and more particularly described as follows: Beginning at a point within Block 18, Breton Sound Area having Coordinates of X = 2,661,161.00 and Y = 343,468.00; thence East 3,689.00 feet to a point on the common line of said Block 18 and Block 19, Breton Sound Area, also being a point on the boundary of State Lease No. 16610, as amended, having Coordinates of X = 2,664,850.00 and Y = 343,468.00; thence along the boundary of said State Lease No. 16610 the following courses: South 1,358.00 feet to a point having Coordinates of X = 2,664,850.00 and Y = 342,110.00, East 1,278.88 feet to a point having Coordinates of X = 2,666,128.88 and Y = 342,110.00, South 741.88 feet to a point having Coordinates of X = 2,666,128.88 and Y = 341,368.12, North 37 degrees 08 minutes 48 seconds East 2,022.20 feet to a point having Coordinates of X = 2,667,350.00 and Y = 342,980.00, and South 37 degrees 08 minutes 48 seconds East 1,343.03 feet to a point within said Block 19 having Coordinates of X = 2,668,161.00 and Y = 341,909.48; thence South 12,441.48 feet to a point within Block 30, Breton Sound Area having Coordinates of X = 2,668,161.00 and Y = 329,468.00; thence West 7,000.00 feet to a point within Block 31, Breton Sound Area having Coordinates of X = 2,661,161.00 and Y = 329,468.00; thence North 14,000.00 feet to the point of beginning, containing approximately **2,154.58 acres**, all as more particularly outlined on a plat on file in the Office of Mineral Resources, Department of Natural Resources. All bearings, distances and coordinates are based on Louisiana Coordinate System of 1927, (North or South Zone), where applicable.

NOTE: The above description of the Tract nominated for lease has been provided and corrected, where required, exclusively by the nomination party. Any mineral lease selected from this Tract and awarded by the Louisiana State Mineral and Energy Board shall be without warranty of any kind, either express, implied, or statutory, including, but not limited to, the implied warranties of merchantability and fitness for a particular purpose. Should the mineral lease awarded by the Louisiana State Mineral and Energy Board be subsequently modified, cancelled or abrogated due to the existence of conflicting leases, operating agreements, private claims or other future obligations or conditions which may affect all or any portion of the leased Tract, it shall not relieve the Lessee of the obligation to pay any bonus due thereon to the Louisiana State Mineral and Energy Board, nor shall the Louisiana State Mineral and Energy Board be obligated to refund any consideration paid by the Lessor prior to such modification, cancellation, or abrogation, including, but not limited to, bonuses, rentals and royalties.

NOTE: The State of Louisiana does hereby reserve, and this lease shall be subject to, the imprescriptible right of surface use in the nature of a

servitude in favor of the Department of Natural Resources, including its Offices and Commissions, for the sole purpose of implementing, constructing, servicing and maintaining approved coastal zone management and/or restoration projects. Utilization of any and all rights derived under this lease by the mineral lessee, its agents, successors or assigns, shall not interfere with nor hinder the reasonable surface use by the Department of Natural Resources, its Offices or Commissions, as herein above reserved.

NOTE: It appears, according to our records, that a portion of this Tract is located within the restrictive safety fairway area as set out by the Corps of Engineers, U.S. Army and/or the restrictive anchorage area as set out by the U.S. Coast Guard.

NOTE: This tract is located in an area designated by the Louisiana Legislature or the Wildlife and Fisheries Commission as a Public Oyster Seed Ground, Reservation, or area of Calcasieu or Sabine Lake. Proposed projects occurring in these areas will be evaluated on a case by case basis by Louisiana Department of Wildlife & Fisheries. Modifications to proposed project features including, but not limited to, access routes, well sites, flowlines, and appurtenant structures maybe required by the Louisiana Department of Wildlife and Fisheries. In addition, compensatory mitigation will be required to offset unavoidable habitat impacts.

Applicant: KARE-SUE ENERGY, INC.

Bidder	Cash Payment	Price/Acre	Rental	Oil	Gas	Other

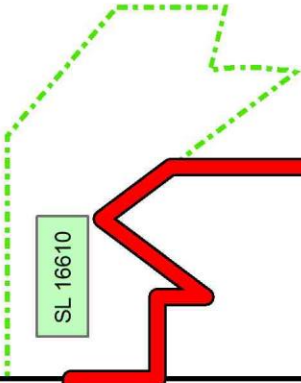


**Legend**

- 18110013 Blocks
- Active\_Leases

BS0019

BS0030



SL 16610

PLAQUEMINES

BS0018

P.O.B.

GULF OF MEXICO

BRETON SOUND AREA

BS0031



**TRACT 45014 - Portion of Blocks 19, and 30, Breton Sound Area, Plaquemines Parish, Louisiana**

All of the lands now or formerly constituting the beds and bottoms of all water bodies of every nature and description as to which title is vested in the State of Louisiana, together with all islands arising therein and other lands formed by accretion or by reliction, where allowed by law, excepting tax adjudicated lands, and not presently under mineral lease on November 14, 2018, situated in Plaquemines Parish, Louisiana, and more particularly described as follows: Beginning at a point within Block 19, Breton Sound Area having Coordinates of X = 2,675,161.00 and Y = 343,468.00; thence South 14,000.00 feet to a point within Block 30, Breton Sound Area having Coordinates of X = 2,675,161.00 and Y = 329,468.00; thence West 7,000.00 feet to a point having Coordinates of X = 2,668,161.00 and Y = 329,468.00; thence North 12,441.48 feet to a point within said Block 19, also being a point on the boundary of the Northern portion of State Lease No. 16610, as amended, having Coordinates of X = 2,668,161.00 and Y = 341,909.48; thence along the boundary of said State Lease No. 16610 the following courses: South 37 degrees 08 minutes 48 seconds East 2,447.06 feet to a point having Coordinates of X = 2,669,638.68 and Y = 339,958.95, North 11 degrees 54 minutes 04 seconds East 140.68 feet to a point having Coordinates of X = 2,669,667.69 and Y = 340,096.60, North 06 degrees 34 minutes 02 seconds East 354.64 feet to a point having Coordinates of X = 2,669,708.25 and Y = 340,448.91, North 00 degrees 44 minutes 07 seconds East 487.86 feet to a point having Coordinates of X = 2,669,714.51 and Y = 340,936.73, North 05 degrees 42 minutes 57 seconds West 357.95 feet to a point having Coordinates of X = 2,669,678.86 and Y = 341,292.90, South 76 degrees 14 minutes 07 seconds East 999.85 feet to a point having Coordinates of X = 2,670,650.00 and Y = 341,055.00, North 1,700.00 feet to a point having Coordinates of X = 2,670,650.00 and Y = 342,755.00, and North 49 degrees 38 minutes 08 seconds West 1,100.91 feet to a point having Coordinates of X = 2,669,811.18 and Y = 343,468.00; thence East 5,349.82 feet to the point of beginning, **LESS AND EXCEPT** all that portion of said State Lease No. 16610 that lies within the above nominated tract, more particularly described as follows: Commencing at the point of beginning of the above described tract having Coordinates of X = 2,675,161.00 and Y = 343,468.00; thence South 50 degrees 07 minutes 31 seconds West 7,861.68 feet to the Northernmost corner of the Southern portion of said State Lease No. 16610 having Coordinates of X = 2,669,127.57 and Y = 338,427.79; thence along the boundary of said State Lease No. 16610 the following courses: South 02 degrees 27 minutes 15 seconds West 5.61 feet to a point having Coordinates of X = 2,669,127.33 and Y = 338,422.19, South 13 degrees 39 minutes 40 seconds East 75.58 feet to a point having Coordinates of X = 2,669,145.18 and Y = 338,348.75, South 23 degrees 56 minutes 51 seconds East 97.73 feet to a point having Coordinates of X = 2,669,184.85 and Y = 338,259.43, South 25 degrees 14 minutes 37 seconds East 260.46 feet to a point having Coordinates of X = 2,669,295.93 and Y = 338,023.84, South 23 degrees 01 minutes 23 seconds East 187.62 feet to a point having Coordinates of X = 2,669,369.31 and Y = 337,851.16, South 21 degrees 04 minutes 52 seconds East 148.91 feet to a point having Coordinates of X = 2,669,422.87 and Y = 337,712.22, South 17 degrees 48 minutes 40 seconds East

116.75 feet to a point having Coordinates of X = 2,669,458.58 and Y = 337,601.07, South 12 degrees 00 minutes 01 seconds East 95.37 feet to a point having Coordinates of X = 2,669,478.41 and Y = 337,507.78, North 79 degrees 51 minutes 47 seconds West 56.42 feet to a point having Coordinates of X = 2,669,422.87 and Y = 337,517.71, North 79 degrees 19 minutes 26 seconds West 267.85 feet to a point having Coordinates of X = 2,669,159.66 and Y = 337,567.33, North 82 degrees 15 minutes 01 seconds West 250.22 feet to a point having Coordinates of X = 2,668,911.73 and Y = 337,601.07, North 82 degrees 37 minutes 29 seconds West 245.00 feet to a point having Coordinates of X = 2,668,668.76 and Y = 337,632.52, and North 29 degrees 58 minutes 54 seconds East 918.13 feet to its point of beginning; the above described nominated tract containing approximately **2,107.66 acres**, all as more particularly outlined on a plat on file in the Office of Mineral Resources, Department of Natural Resources. All bearings, distances and coordinates are based on Louisiana Coordinate System of 1927, (North or South Zone), where applicable.

NOTE: The above description of the Tract nominated for lease has been provided and corrected, where required, exclusively by the nomination party. Any mineral lease selected from this Tract and awarded by the Louisiana State Mineral and Energy Board shall be without warranty of any kind, either express, implied, or statutory, including, but not limited to, the implied warranties of merchantability and fitness for a particular purpose. Should the mineral lease awarded by the Louisiana State Mineral and Energy Board be subsequently modified, cancelled or abrogated due to the existence of conflicting leases, operating agreements, private claims or other future obligations or conditions which may affect all or any portion of the leased Tract, it shall not relieve the Lessee of the obligation to pay any bonus due thereon to the Louisiana State Mineral and Energy Board, nor shall the Louisiana State Mineral and Energy Board be obligated to refund any consideration paid by the Lessor prior to such modification, cancellation, or abrogation, including, but not limited to, bonuses, rentals and royalties.

NOTE: The State of Louisiana does hereby reserve, and this lease shall be subject to, the imprescriptible right of surface use in the nature of a servitude in favor of the Department of Natural Resources, including its Offices and Commissions, for the sole purpose of implementing, constructing, servicing and maintaining approved coastal zone management and/or restoration projects. Utilization of any and all rights derived under this lease by the mineral lessee, its agents, successors or assigns, shall not interfere with nor hinder the reasonable surface use by the Department of Natural Resources, its Offices or Commissions, as herein above reserved.

NOTE: It appears, according to our records, that a portion of this Tract is located within the restrictive safety fairway area as set out by the Corps of Engineers, U.S. Army and/or the restrictive anchorage area as set out by the U.S. Coast Guard.

NOTE: This tract is located in an area designated by the Louisiana Legislature or the Wildlife and Fisheries Commission as a Public Oyster Seed Ground, Reservation, or area of Calcasieu or Sabine Lake. Proposed projects occurring in these areas will be evaluated on a case by case basis by Louisiana Department of Wildlife & Fisheries. Modifications to proposed project features including, but not limited to, access routes, well sites, flowlines, and appurtenant structures maybe required by the Louisiana Department of Wildlife and Fisheries. In addition, compensatory mitigation will be required to offset unavoidable habitat impacts.

Applicant: KARE-SUE ENERGY, INC.

Bidder	Cash Payment	Price/Acre	Rental	Oil	Gas	Other

**Legend**

- 18110006
- Blocks
- Active\_Leases

PLAQUEMINES

BS0019

P.O.B.

SL 16610

GULF OF MEXICO

BRETON SOUND AREA

BS0030

SL 16610





**TRACT 45015 - Portion of Blocks 31, and 32, Breton Sound Area, Plaquemines Parish, Louisiana**

All of the lands now or formerly constituting the beds and bottoms of all water bodies of every nature and description as to which title is vested in the State of Louisiana, together with all islands arising therein and other lands formed by accretion or by reliction, where allowed by law, excepting tax adjudicated lands, and not presently under mineral lease on November 14, 2018, situated in Plaquemines Parish, Louisiana, and more particularly described as follows: Beginning at a point within Block 32, Breton Sound Area having Coordinates of X = 2,648,000.00 and Y = 331,800.00; thence East 13,161.00 feet to a point within Block 31, Breton Sound Area having Coordinates of X = 2,661,161.00 and Y = 331,800.00; thence South 2,332.00 feet to a point having Coordinates of X = 2,661,161.00 and Y = 329,468.00; thence South 5,568.00 feet to a point having Coordinates of X = 2,661,161.00 and Y = 323,900.00; thence West 4,093.75 feet to a point on the boundary of State Lease No. 21543 having Coordinates of X = 2,657,067.25 and Y = 323,900.00; thence along the boundary of said State Lease No. 21543 the following courses: North 33 degrees 20 minutes 13 seconds West 4,489.49 feet to a point having Coordinates of X = 2,654,600.00 and Y = 327,650.76, West 4,500.00 feet to a point having Coordinates of X = 2,650,100.00 and Y = 327,650.76, and South 3,750.76 feet to a point on the common boundary of said Blocks 31 and 32 having Coordinates of X = 2,650,100.00 and Y = 323,900.00; thence West 2,100.00 feet to a point within said Block 32 having Coordinates of X = 2,648,000.00 and Y = 323,900.00; thence North 7,900.00 feet to the point of beginning, containing approximately **1,893.17 acres**, all as more particularly outlined on a plat on file in the Office of Mineral Resources, Department of Natural Resources. All bearings, distances and coordinates are based on Louisiana Coordinate System of 1927, (North or South Zone), where applicable.

NOTE: The above description of the Tract nominated for lease has been provided and corrected, where required, exclusively by the nomination party. Any mineral lease selected from this Tract and awarded by the Louisiana State Mineral and Energy Board shall be without warranty of any kind, either express, implied, or statutory, including, but not limited to, the implied warranties of merchantability and fitness for a particular purpose. Should the mineral lease awarded by the Louisiana State Mineral and Energy Board be subsequently modified, cancelled or abrogated due to the existence of conflicting leases, operating agreements, private claims or other future obligations or conditions which may affect all or any portion of the leased Tract, it shall not relieve the Lessee of the obligation to pay any bonus due thereon to the Louisiana State Mineral and Energy Board, nor shall the Louisiana State Mineral and Energy Board be obligated to refund any consideration paid by the Lessor prior to such modification, cancellation, or abrogation, including, but not limited to, bonuses, rentals and royalties.

NOTE: The State of Louisiana does hereby reserve, and this lease shall be subject to, the imprescriptible right of surface use in the nature of a servitude in favor of the Department of Natural Resources, including its

Offices and Commissions, for the sole purpose of implementing, constructing, servicing and maintaining approved coastal zone management and/or restoration projects. Utilization of any and all rights derived under this lease by the mineral lessee, its agents, successors or assigns, shall not interfere with nor hinder the reasonable surface use by the Department of Natural Resources, its Offices or Commissions, as herein above reserved.

NOTE: It appears, according to our records, that a portion of this Tract is located within the restrictive safety fairway area as set out by the Corps of Engineers, U.S. Army and/or the restrictive anchorage area as set out by the U.S. Coast Guard.

NOTE: This tract is located in an area designated by the Louisiana Legislature or the Wildlife and Fisheries Commission as a Public Oyster Seed Ground, Reservation, or area of Calcasieu or Sabine Lake. Proposed projects occurring in these areas will be evaluated on a case by case basis by Louisiana Department of Wildlife & Fisheries. Modifications to proposed project features including, but not limited to, access routes, well sites, flowlines, and appurtenant structures maybe required by the Louisiana Department of Wildlife and Fisheries. In addition, compensatory mitigation will be required to offset unavoidable habitat impacts.

Applicant: KARE-SUE ENERGY, INC.

Bidder	Cash Payment	Price/Acre	Rental	Oil	Gas	Other

**Legend**

- 18110007
- Blocks
- Active\_Leases



0 3,000 Feet

PLAQUEMINES

BS0031

P.O.B.

BS0032

BRETON SOUND AREA

SL 21543

BS0033

GULF OF MEXICO

BS0034

**TRACT 45016 - Portion of Blocks 30, 31, 34, and 35, Breton Sound Area, Plaquemines Parish, Louisiana**

All of the lands now or formerly constituting the beds and bottoms of all water bodies of every nature and description as to which title is vested in the State of Louisiana, together with all islands arising therein and other lands formed by accretion or by reliction, where allowed by law, excepting tax adjudicated lands, and not presently under mineral lease on November 14, 2018, situated in Plaquemines Parish, Louisiana, and more particularly described as follows: Beginning at a point in Block 31, Breton Sound Area having Coordinates of X = 2,661,161.00 and Y = 329,468.00; thence East 7,000.00 feet to a point in Block 30, Breton Sound Area having Coordinates of X = 2,668,161.00 and Y = 329,468.00; thence South 14,000.00 feet to a point in Block 35, Breton Sound Area having Coordinates of X = 2,668,161.00 and Y = 315,468.00; thence West 7,000.00 feet to a point in Block 34, Breton Sound Area having Coordinates of X = 2,661,161.00 and Y = 315,468.00; thence North 14,000.00 feet to the point of beginning, containing approximately **2,249.77 acres**, all as more particularly outlined on a plat on file in the Office of Mineral Resources, Department of Natural Resources. All bearings, distances and coordinates are based on Louisiana Coordinate System of 1927, (North or South Zone), where applicable.

NOTE: The above description of the Tract nominated for lease has been provided and corrected, where required, exclusively by the nomination party. Any mineral lease selected from this Tract and awarded by the Louisiana State Mineral and Energy Board shall be without warranty of any kind, either express, implied, or statutory, including, but not limited to, the implied warranties of merchantability and fitness for a particular purpose. Should the mineral lease awarded by the Louisiana State Mineral and Energy Board be subsequently modified, cancelled or abrogated due to the existence of conflicting leases, operating agreements, private claims or other future obligations or conditions which may affect all or any portion of the leased Tract, it shall not relieve the Lessee of the obligation to pay any bonus due thereon to the Louisiana State Mineral and Energy Board, nor shall the Louisiana State Mineral and Energy Board be obligated to refund any consideration paid by the Lessor prior to such modification, cancellation, or abrogation, including, but not limited to, bonuses, rentals and royalties.

NOTE: The State of Louisiana does hereby reserve, and this lease shall be subject to, the imprescriptible right of surface use in the nature of a servitude in favor of the Department of Natural Resources, including its Offices and Commissions, for the sole purpose of implementing, constructing, servicing and maintaining approved coastal zone management and/or restoration projects. Utilization of any and all rights derived under this lease by the mineral lessee, its agents, successors or assigns, shall not interfere with nor hinder the reasonable surface use by the Department of Natural Resources, its Offices or Commissions, as herein above reserved.

NOTE: It appears, according to our records, that a portion of this Tract is located within the restrictive safety fairway area as set out by the Corps

of Engineers, U.S. Army and/or the restrictive anchorage area as set out by the U.S. Coast Guard.


NOTE: This tract is located in an area designated by the Louisiana Legislature or the Wildlife and Fisheries Commission as a Public Oyster Seed Ground, Reservation, or area of Calcasieu or Sabine Lake. Proposed projects occurring in these areas will be evaluated on a case by case basis by Louisiana Department of Wildlife & Fisheries. Modifications to proposed project features including, but not limited to, access routes, well sites, flowlines, and appurtenant structures maybe required by the Louisiana Department of Wildlife and Fisheries. In addition, compensatory mitigation will be required to offset unavoidable habitat impacts.

Applicant: KARE-SUE ENERGY, INC.

Bidder	Cash Payment	Price/Acre	Rental	Oil	Gas	Other



**Legend**  
18110014  
Blocks



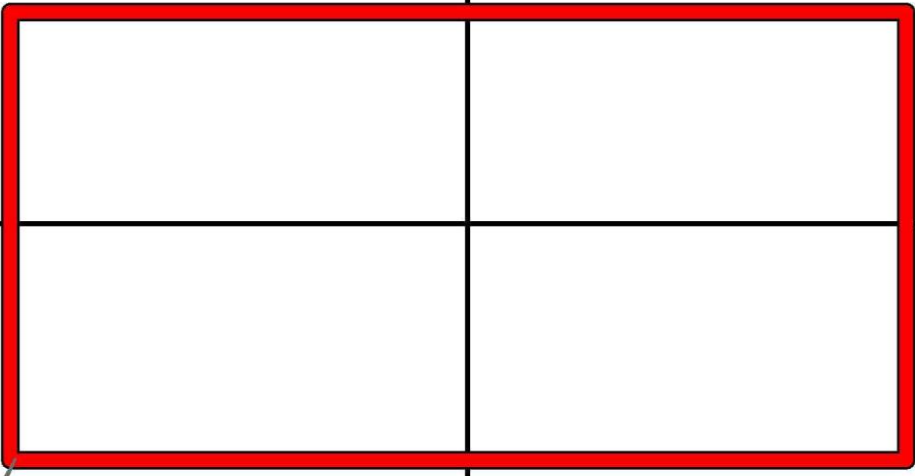
PLAQUEMINES

BS0030

BS0035

GULF OF MEXICO

BRETON SOUND AREA



BS0031

P.O.B.

BS0034



**TRACT 45017 - Portion of Blocks 30, and 35, Breton Sound Area, Plaquemines Parish, Louisiana**

All of the lands now or formerly constituting the beds and bottoms of all water bodies of every nature and description as to which title is vested in the State of Louisiana, together with all islands arising therein and other lands formed by accretion or by reliction, where allowed by law, excepting tax adjudicated lands, and not presently under mineral lease on November 14, 2018, situated in Plaquemines Parish, Louisiana, and more particularly described as follows: Beginning at a point in Block 30, Breton Sound Area having Coordinates of X = 2,668,161.00 and Y = 329,468.00; thence East 7,000.00 feet to a point having Coordinates of X = 2,675,161.00 and Y = 329,468.00; thence South 14,000.00 feet to a point in Block 35, Breton Sound Area having Coordinates of X = 2,675,161.00 and Y = 315,468.00; thence West 7,000.00 feet to a point having Coordinates of X = 2,668,161.00 and Y = 315,468.00; thence North 14,000.00 feet to the point of beginning, containing approximately **2,249.77 acres**, all as more particularly outlined on a plat on file in the Office of Mineral Resources, Department of Natural Resources. All bearings, distances and coordinates are based on Louisiana Coordinate System of 1927, (North or South Zone), where applicable.

NOTE: The above description of the Tract nominated for lease has been provided and corrected, where required, exclusively by the nomination party. Any mineral lease selected from this Tract and awarded by the Louisiana State Mineral and Energy Board shall be without warranty of any kind, either express, implied, or statutory, including, but not limited to, the implied warranties of merchantability and fitness for a particular purpose. Should the mineral lease awarded by the Louisiana State Mineral and Energy Board be subsequently modified, cancelled or abrogated due to the existence of conflicting leases, operating agreements, private claims or other future obligations or conditions which may affect all or any portion of the leased Tract, it shall not relieve the Lessee of the obligation to pay any bonus due thereon to the Louisiana State Mineral and Energy Board, nor shall the Louisiana State Mineral and Energy Board be obligated to refund any consideration paid by the Lessor prior to such modification, cancellation, or abrogation, including, but not limited to, bonuses, rentals and royalties.

NOTE: The State of Louisiana does hereby reserve, and this lease shall be subject to, the imprescriptible right of surface use in the nature of a servitude in favor of the Department of Natural Resources, including its Offices and Commissions, for the sole purpose of implementing, constructing, servicing and maintaining approved coastal zone management and/or restoration projects. Utilization of any and all rights derived under this lease by the mineral lessee, its agents, successors or assigns, shall not interfere with nor hinder the reasonable surface use by the Department of Natural Resources, its Offices or Commissions, as herein above reserved.

NOTE: It appears, according to our records, that a portion of this Tract is located within the restrictive safety fairway area as set out by the Corps

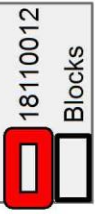
of Engineers, U.S. Army and/or the restrictive anchorage area as set out by the U.S. Coast Guard.

NOTE: This tract is located in an area designated by the Louisiana Legislature or the Wildlife and Fisheries Commission as a Public Oyster Seed Ground, Reservation, or area of Calcasieu or Sabine Lake. Proposed projects occurring in these areas will be evaluated on a case by case basis by Louisiana Department of Wildlife & Fisheries. Modifications to proposed project features including, but not limited to, access routes, well sites, flowlines, and appurtenant structures maybe required by the Louisiana Department of Wildlife and Fisheries. In addition, compensatory mitigation will be required to offset unavoidable habitat impacts.

Applicant: KARE-SUE ENERGY, INC.

Bidder	Cash Payment	Price/Acre	Rental	Oil	Gas	Other

**Legend**



PLAQUEMINES

BS0030

P.O.B.

GULF OF MEXICO

BRETON SOUND AREA

BS0035



0 3,000 Feet

**TRACT 45018 - Portion of Blocks 31, and 34, Breton Sound Area, Plaquemines Parish, Louisiana**

All of the lands now or formerly constituting the beds and bottoms of all water bodies of every nature and description as to which title is vested in the State of Louisiana, together with all islands arising therein and other lands formed by accretion or by reliction, where allowed by law, excepting tax adjudicated lands, and not presently under mineral lease on November 14, 2018, situated in Plaquemines Parish, Louisiana, and more particularly described as follows: Beginning at a point within Block 31, Breton Sound Area having Coordinates of X = 2,661,161.00 and Y = 323,900.00; thence South 6,400.00 feet to a point within Block 34, Breton Sound Area having Coordinates of X = 2,661,161.00 and Y = 317,500.00; thence West 4,477.56 feet to a point on the boundary of State Lease No. 21543 having Coordinates of X = 2,656,683.44 and Y = 317,500.00; thence along the boundary of said State Lease No. 21543 the following courses: North 16 degrees 20 minutes 44 seconds East 5,033.44 feet to a point having Coordinates of X = 2,658,100.00 and Y = 322,330.00, and North 33 degrees 20 minutes 13 seconds West 1,879.22 feet to a point within said Block 31 having Coordinates of X = 2,657,067.25 and Y = 323,900.00; thence East 4,093.75 feet to the point of beginning, containing approximately **546.88 acres**, all as more particularly outlined on a plat on file in the Office of Mineral Resources, Department of Natural Resources. All bearings, distances and coordinates are based on Louisiana Coordinate System of 1927, (North or South Zone), where applicable.

NOTE: The above description of the Tract nominated for lease has been provided and corrected, where required, exclusively by the nomination party. Any mineral lease selected from this Tract and awarded by the Louisiana State Mineral and Energy Board shall be without warranty of any kind, either express, implied, or statutory, including, but not limited to, the implied warranties of merchantability and fitness for a particular purpose. Should the mineral lease awarded by the Louisiana State Mineral and Energy Board be subsequently modified, cancelled or abrogated due to the existence of conflicting leases, operating agreements, private claims or other future obligations or conditions which may affect all or any portion of the leased Tract, it shall not relieve the Lessee of the obligation to pay any bonus due thereon to the Louisiana State Mineral and Energy Board, nor shall the Louisiana State Mineral and Energy Board be obligated to refund any consideration paid by the Lessor prior to such modification, cancellation, or abrogation, including, but not limited to, bonuses, rentals and royalties.

NOTE: The State of Louisiana does hereby reserve, and this lease shall be subject to, the imprescriptible right of surface use in the nature of a servitude in favor of the Department of Natural Resources, including its Offices and Commissions, for the sole purpose of implementing, constructing, servicing and maintaining approved coastal zone management and/or restoration projects. Utilization of any and all rights derived under this lease by the mineral lessee, its agents, successors or assigns, shall not interfere with nor hinder the reasonable surface use by the Department of Natural Resources, its Offices or Commissions, as herein above reserved.



NOTE: This tract is located in an area designated by the Louisiana Legislature or the Wildlife and Fisheries Commission as a Public Oyster Seed Ground, Reservation, or area of Calcasieu or Sabine Lake. Proposed projects occurring in these areas will be evaluated on a case by case basis by Louisiana Department of Wildlife & Fisheries. Modifications to proposed project features including, but not limited to, access routes, well sites, flowlines, and appurtenant structures maybe required by the Louisiana Department of Wildlife and Fisheries. In addition, compensatory mitigation will be required to offset unavoidable habitat impacts.

Applicant: KARE-SUE ENERGY, INC.

Bidder	Cash Payment	Price/Acre	Rental	Oil	Gas	Other

**Legend**

- 18110010
- Blocks
- Active\_Leases

PLAQUEMINES

BS0031

P.O.B.

BS0034

GULF OF MEXICO

BRETON SOUND AREA

SL 21543



**TRACT 45019 - Portion of Blocks 33, and 34, Breton Sound Area, Plaquemines Parish, Louisiana**

All of the lands now or formerly constituting the beds and bottoms of all water bodies of every nature and description as to which title is vested in the State of Louisiana, together with all islands arising therein and other lands formed by accretion or by reliction, where allowed by law, excepting tax adjudicated lands, and not presently under mineral lease on November 14, 2018, situated in Plaquemines Parish, Louisiana, and more particularly described as follows: Beginning a point within Block 33, Breton Sound Area having Coordinates of X = 2,646,000.00 and Y = 317,500.00; thence East 4,100.00 feet to a point on the common boundary of said Block 33 and Block 34, Breton Sound Area, also being a point on the boundary of State Lease No. 21543 having Coordinates of X = 2,650,100.00 and Y = 317,500.00; thence along the boundary of said State Lease 21543 the following courses: South 284.46 feet to a point having Coordinates of X = 2,650,100.00 and Y = 317,215.54, East 6,500.01 feet to a point having Coordinates of X = 2,656,600.01 and Y = 317,215.54, and North 16 degrees 20 minutes 44 seconds East 296.44 feet to a point having Coordinates of X = 2,656,683.44 and Y = 317,500.00; thence East 4,477.56 feet to a point within said Block 34 having Coordinates of X = 2,661,161.00 and Y = 317,500.00; thence South 6,500.00 feet to a point having Coordinates of X = 2,661,161.00 and Y = 311,000.00; thence West 927.45 feet to a point on the boundary of State Lease No. 17767, as amended having Coordinates of X = 2,660,233.55 and Y = 311,000.00; thence along the boundary of said State Lease No. 17767 the following courses: North 6,215.54 feet to a point having Coordinates of X = 2,660,233.55 and Y = 317,215.54, West 1,483.55 feet to a point having Coordinates of X = 2,658,750.00 and Y = 317,215.54, South 650.00 feet to a point having Coordinates of X = 2,658,750.00 and Y = 316,565.54, and South 48 degrees 50 minutes 59 seconds West 859.44 feet to its Westernmost corner and the Northernmost corner of State Lease No. 17965, as amended having Coordinates of X = 2,658,102.86 and Y = 316,000.00; thence along the boundary of said State Lease No. 17965 the following courses: South 48 degrees 50 minutes 59 seconds West 1,588.06 feet to a point having Coordinates of X = 2,656,907.07 and Y = 314,955.00, and South 21 degrees 00 minutes 16 seconds East 4,236.50 feet to a point having Coordinates of X = 2,658,425.60 and Y = 311,000.00; thence West 12,425.60 feet to a point within said Block 33 having Coordinates of X = 2,646,000.00 and Y = 311,000.00; thence North 6,500.00 feet to the point of beginning, containing approximately **1,875.45 acres**, all as more particularly outlined on a plat on file in the Office of Mineral Resources, Department of Natural Resources. All bearings, distances and coordinates are based on Louisiana Coordinate System of 1927, (North or South Zone), where applicable.

NOTE: The above description of the Tract nominated for lease has been provided and corrected, where required, exclusively by the nomination party. Any mineral lease selected from this Tract and awarded by the Louisiana State Mineral and Energy Board shall be without warranty of any kind, either express, implied, or statutory, including, but not limited to, the implied warranties of merchantability and fitness for a particular purpose. Should the mineral lease awarded by the Louisiana State Mineral and Energy Board be

subsequently modified, cancelled or abrogated due to the existence of conflicting leases, operating agreements, private claims or other future obligations or conditions which may affect all or any portion of the leased Tract, it shall not relieve the Lessee of the obligation to pay any bonus due thereon to the Louisiana State Mineral and Energy Board, nor shall the Louisiana State Mineral and Energy Board be obligated to refund any consideration paid by the Lessor prior to such modification, cancellation, or abrogation, including, but not limited to, bonuses, rentals and royalties.

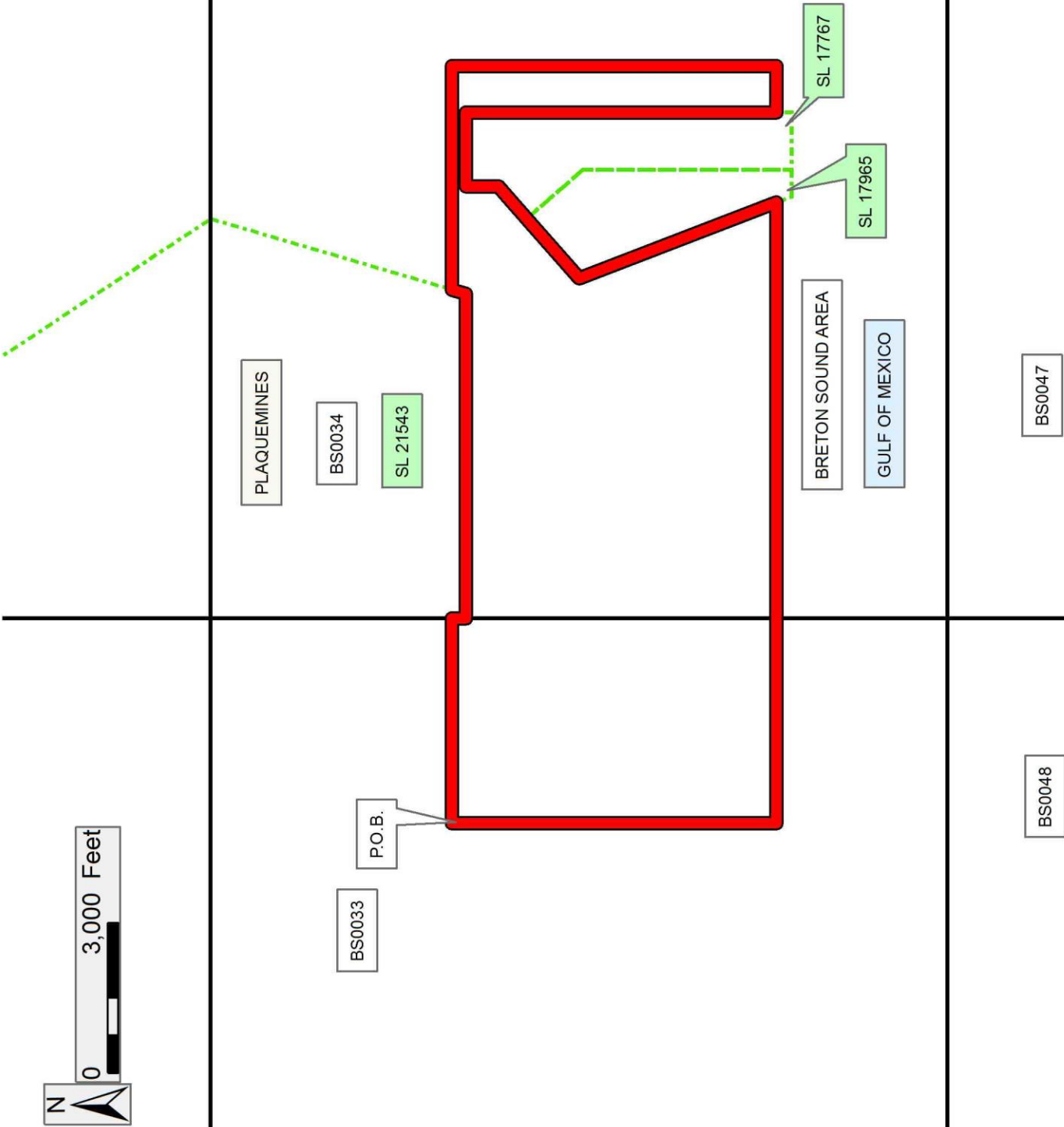
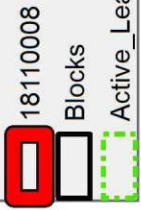
NOTE: The State of Louisiana does hereby reserve, and this lease shall be subject to, the imprescriptible right of surface use in the nature of a servitude in favor of the Department of Natural Resources, including its Offices and Commissions, for the sole purpose of implementing, constructing, servicing and maintaining approved coastal zone management and/or restoration projects. Utilization of any and all rights derived under this lease by the mineral lessee, its agents, successors or assigns, shall not interfere with nor hinder the reasonable surface use by the Department of Natural Resources, its Offices or Commissions, as herein above reserved.

NOTE: This tract is located in an area designated by the Louisiana Legislature or the Wildlife and Fisheries Commission as a Public Oyster Seed Ground, Reservation, or area of Calcasieu or Sabine Lake. Proposed projects occurring in these areas will be evaluated on a case by case basis by Louisiana Department of Wildlife & Fisheries. Modifications to proposed project features including, but not limited to, access routes, well sites, flowlines, and appurtenant structures maybe required by the Louisiana Department of Wildlife and Fisheries. In addition, compensatory mitigation will be required to offset unavoidable habitat impacts.

Applicant: KARE-SUE ENERGY, INC.

Bidder	Cash Payment	Price/Acre	Rental	Oil	Gas	Other

**Legend**



**TRACT 45020 - Portion of Block 35, Breton Sound Area, Plaquemines Parish, Louisiana**

All of the lands now or formerly constituting the beds and bottoms of all water bodies of every nature and description as to which title is vested in the State of Louisiana, together with all islands arising therein and other lands formed by accretion or by reliction, where allowed by law, excepting tax adjudicated lands, and not presently under mineral lease on November 14, 2018, situated in Plaquemines Parish, Louisiana, and more particularly described as follows: Beginning at a point on the West line of Block 35, Breton Sound Area having Coordinates of X = 2,664,850.00 and Y = 315,468.00; thence East 14,750.00 feet to a point on the East line of said Block 35 having Coordinates of X = 2,679,600.00 and Y = 315,468.00; thence South 6,000.00 feet on the East line of said Block 35 to a point having Coordinates of X = 2,679,600.00 and Y = 309,468.00; thence West 14,750.00 feet to a point on the West line of said Block 35 having Coordinates of X = 2,664,850.00 and Y = 309,468.00; thence North 6,000.00 feet on the West line of said Block 35 to the point of beginning, containing approximately **2,031.68 acres**, all as more particularly outlined on a plat on file in the Office of Mineral Resources, Department of Natural Resources. All bearings, distances and coordinates are based on Louisiana Coordinate System of 1927, (North or South Zone), where applicable.

NOTE: The above description of the Tract nominated for lease has been provided and corrected, where required, exclusively by the nomination party. Any mineral lease selected from this Tract and awarded by the Louisiana State Mineral and Energy Board shall be without warranty of any kind, either express, implied, or statutory, including, but not limited to, the implied warranties of merchantability and fitness for a particular purpose. Should the mineral lease awarded by the Louisiana State Mineral and Energy Board be subsequently modified, cancelled or abrogated due to the existence of conflicting leases, operating agreements, private claims or other future obligations or conditions which may affect all or any portion of the leased Tract, it shall not relieve the Lessee of the obligation to pay any bonus due thereon to the Louisiana State Mineral and Energy Board, nor shall the Louisiana State Mineral and Energy Board be obligated to refund any consideration paid by the Lessor prior to such modification, cancellation, or abrogation, including, but not limited to, bonuses, rentals and royalties.

NOTE: The State of Louisiana does hereby reserve, and this lease shall be subject to, the imprescriptible right of surface use in the nature of a servitude in favor of the Department of Natural Resources, including its Offices and Commissions, for the sole purpose of implementing, constructing, servicing and maintaining approved coastal zone management and/or restoration projects. Utilization of any and all rights derived under this lease by the mineral lessee, its agents, successors or assigns, shall not interfere with nor hinder the reasonable surface use by the Department of Natural Resources, its Offices or Commissions, as herein above reserved.

NOTE: This tract is located in an area designated by the Louisiana Legislature or the Wildlife and Fisheries Commission as a Public Oyster Seed Ground, Reservation, or area of Calcasieu or Sabine Lake. Proposed projects occurring in these areas will be evaluated on a case by case basis by Louisiana Department of Wildlife & Fisheries. Modifications to proposed project features including, but not limited to, access routes, well sites, flowlines, and appurtenant structures maybe required by the Louisiana Department of Wildlife and Fisheries. In addition, compensatory mitigation will be required to offset unavoidable habitat impacts.

Applicant: KARE-SUE ENERGY, INC.

Bidder	Cash Payment	Price/Acre	Rental	Oil	Gas	Other



Legend

