

TRACT 45001 - Pointe Coupee and West Feliciana Parishes, Louisiana

All of the lands now or formerly constituting the beds and bottoms of all water bodies of every nature and description as to which title is vested in the State of Louisiana, together with all islands arising therein and other lands formed by accretion or by reliction, where allowed by law, excepting tax adjudicated lands, and not presently under mineral lease on November 14, 2018, situated in Pointe Coupee and West Feliciana Parishes, Louisiana, and more particularly described as follows: Beginning at a point having Coordinates of X = 1,905,734.80 and Y = 796,723.01; thence East 18,480.00 feet to a point having Coordinates of X = 1,924,214.80 and Y = 796,723.01; thence South 13,930.86 feet to a point having Coordinates of X = 1,924,214.80 and Y = 782,792.15; thence West 18,480.00 feet to a point having Coordinates of X = 1,905,734.80 and Y = 782,792.15; thence North 13,930.86 feet to the point of beginning, containing approximately **1,519 acres**, all as more particularly outlined on a plat on file in the Office of Mineral Resources, Department of Natural Resources. All bearings, distances and coordinates are based on Louisiana Coordinate System of 1927, (North or South Zone), where applicable.

NOTE: The above description of the Tract nominated for lease has been provided and corrected, where required, exclusively by the nomination party. Any mineral lease selected from this Tract and awarded by the Louisiana State Mineral and Energy Board shall be without warranty of any kind, either express, implied, or statutory, including, but not limited to, the implied warranties of merchantability and fitness for a particular purpose. Should the mineral lease awarded by the Louisiana State Mineral and Energy Board be subsequently modified, cancelled or abrogated due to the existence of conflicting leases, operating agreements, private claims or other future obligations or conditions which may affect all or any portion of the leased Tract, it shall not relieve the Lessee of the obligation to pay any bonus due thereon to the Louisiana State Mineral and Energy Board, nor shall the Louisiana State Mineral and Energy Board be obligated to refund any consideration paid by the Lessor prior to such modification, cancellation, or abrogation, including, but not limited to, bonuses, rentals and royalties.

NOTE: The Office of Mineral Resources will require a minimum bonus of \$500 per acre and a minimum royalty of 25%.

Applicant: ALJ ENERGY

Bidder	Cash Payment	Price/Acre	Rental	Oil	Gas	Other

Legend



T2S - R5W

WEST FELICIANA

RACCOURCI OLD RIVER

P.O.B.

POINTE COUPEE

T3S - R8E



TRACT 45002 - Cameron Parish, Louisiana

All of the lands now or formerly constituting the beds and bottoms of all water bodies of every nature and description as to which title is vested in the State of Louisiana, together with all islands arising therein and other lands formed by accretion or by reliction, where allowed by law, excepting tax adjudicated lands, and not presently under mineral lease on November 14, 2018, situated in Cameron Parish, Louisiana, and more particularly described as follows: Beginning at a point having Coordinates of X = 1,273,901.52 and Y = 498,894.04; thence East 2,500.00 feet to a point having Coordinates of X = 1,276,401.52 and Y = 498,894.04; thence South 4,000.00 feet to a point having Coordinates of X = 1,276,401.52 and Y = 494,894.04; thence West 2,500.00 feet to a point having Coordinates of X = 1,273,901.52 and Y = 494,894.04; thence North 4,000.00 feet to the point of beginning, containing approximately **36 acres**, all as more particularly outlined on a plat on file in the Office of Mineral Resources, Department of Natural Resources. All bearings, distances and coordinates are based on Louisiana Coordinate System of 1927, (North or South Zone), where applicable.

NOTE: The above description of the Tract nominated for lease has been provided and corrected, where required, exclusively by the nomination party. Any mineral lease selected from this Tract and awarded by the Louisiana State Mineral and Energy Board shall be without warranty of any kind, either express, implied, or statutory, including, but not limited to, the implied warranties of merchantability and fitness for a particular purpose. Should the mineral lease awarded by the Louisiana State Mineral and Energy Board be subsequently modified, cancelled or abrogated due to the existence of conflicting leases, operating agreements, private claims or other future obligations or conditions which may affect all or any portion of the leased Tract, it shall not relieve the Lessee of the obligation to pay any bonus due thereon to the Louisiana State Mineral and Energy Board, nor shall the Louisiana State Mineral and Energy Board be obligated to refund any consideration paid by the Lessor prior to such modification, cancellation, or abrogation, including, but not limited to, bonuses, rentals and royalties.

NOTE: The State of Louisiana does hereby reserve, and this lease shall be subject to, the imprescriptible right of surface use in the nature of a servitude in favor of the Department of Natural Resources, including its Offices and Commissions, for the sole purpose of implementing, constructing, servicing and maintaining approved coastal zone management and/or restoration projects. Utilization of any and all rights derived under this lease by the mineral lessee, its agents, successors or assigns, shall not interfere with nor hinder the reasonable surface use by the Department of Natural Resources, its Offices or Commissions, as herein above reserved.

Applicant: BUFFALO BAYOU INVESTMENT CO.

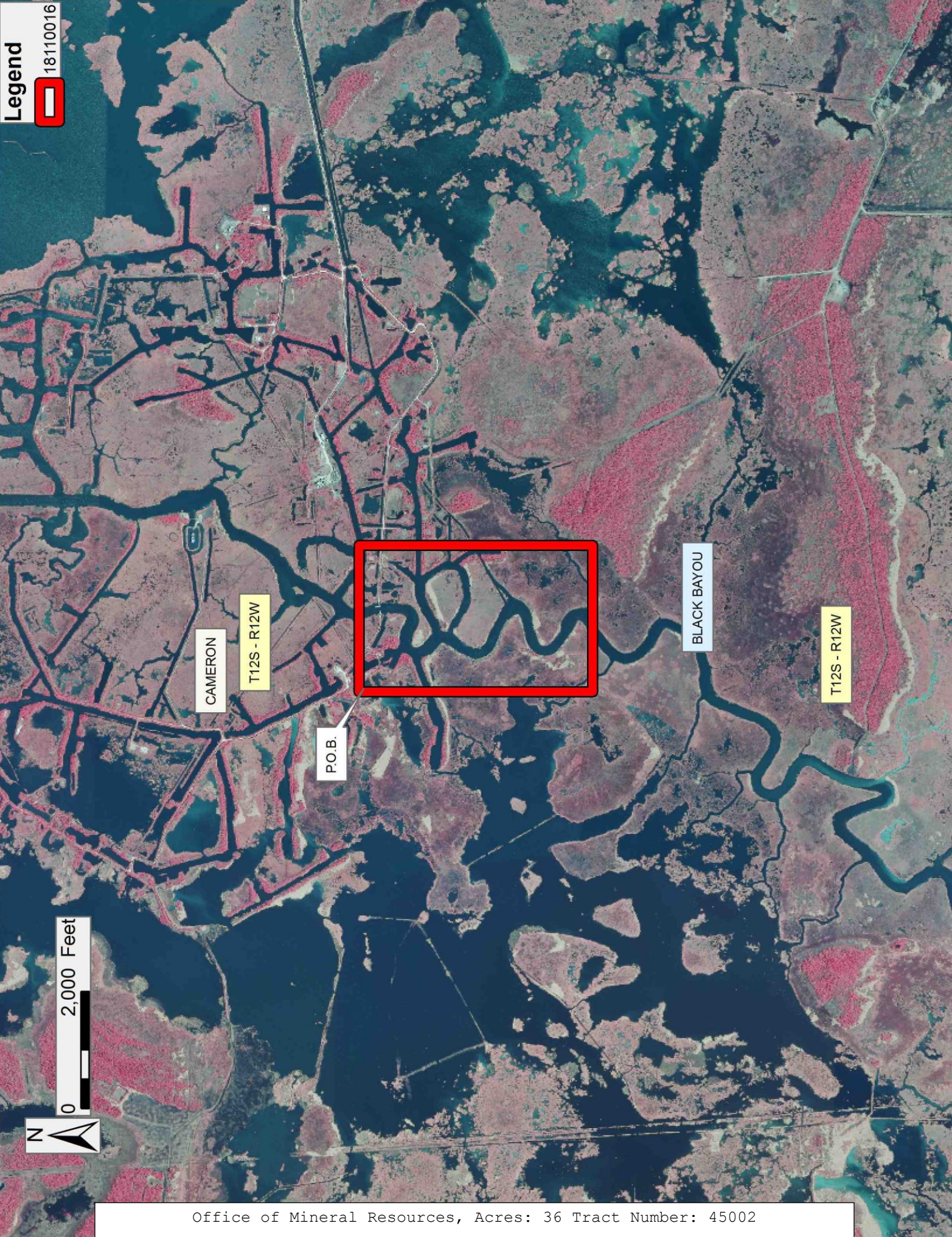
Bidder	Cash Payment	Price/Acre	Rental	Oil	Gas	Other

Legend

18110016



0 2,000 Feet



TRACT 45003 - St. Martin Parish, Louisiana

All of the lands now or formerly constituting the beds and bottoms of all water bodies of every nature and description as to which title is vested in the State of Louisiana, together with all islands arising therein and other lands formed by accretion or by reliction, where allowed by law, excepting tax adjudicated lands, and not presently under mineral lease on November 14, 2018, situated in St. Martin Parish, Louisiana, and more particularly described as follows: Beginning at a point having Coordinates of X = 2,064,199.38 and Y = 412,671.76; thence South 15,840.00 feet to a point having Coordinates of X = 2,064,199.38 and Y = 396,831.76; thence West approximately 14,036 feet to a point on the East boundary of the Atchafalaya Basin having a Coordinate of Y = 396,831.76; thence Northerly and Northeasterly along said boundary of said Atchafalaya Basin to a point of intersection with a line having a Coordinate of Y = 412,671.76; then East approximately 12,690 feet to the point of beginning, **LESS AND EXCEPT** all that portion, if any, of the above described tract that may fall within the boundary of the Atchafalaya Basin, and, **LESS AND EXCEPT** any right, title, and interest in lands owned by and not under lease from the State of Louisiana, on behalf of the St. Martin Parish School Board, situated in Section 16, Township 15 South, Range 13 East, St. Martin Parish, Louisiana, contained within the above described tract, (This lease includes only waterbottoms claimed and owned by the state and specifically excludes any land which the state may claim or own and to which the mineral rights are vested in the state), containing approximately **235 acres**, all as more particularly outlined on a plat on file in the Office of Mineral Resources, Department of Natural Resources. All bearings, distances and coordinates are based on Louisiana Coordinate System of 1927, (North or South Zone), where applicable.

NOTE: The above description of the Tract nominated for lease has been provided and corrected, where required, exclusively by the nomination party. Any mineral lease selected from this Tract and awarded by the Louisiana State Mineral and Energy Board shall be without warranty of any kind, either express, implied, or statutory, including, but not limited to, the implied warranties of merchantability and fitness for a particular purpose. Should the mineral lease awarded by the Louisiana State Mineral and Energy Board be subsequently modified, cancelled or abrogated due to the existence of conflicting leases, operating agreements, private claims or other future obligations or conditions which may affect all or any portion of the leased Tract, it shall not relieve the Lessee of the obligation to pay any bonus due thereon to the Louisiana State Mineral and Energy Board, nor shall the Louisiana State Mineral and Energy Board be obligated to refund any consideration paid by the Lessor prior to such modification, cancellation, or abrogation, including, but not limited to, bonuses, rentals and royalties.

NOTE: The State of Louisiana does hereby reserve, and this lease shall be subject to, the imprescriptible right of surface use in the nature of a servitude in favor of the Department of Natural Resources, including its Offices and Commissions, for the sole purpose of implementing, constructing,

servicing and maintaining approved coastal zone management and/or restoration projects. Utilization of any and all rights derived under this lease by the mineral lessee, its agents, successors or assigns, shall not interfere with nor hinder the reasonable surface use by the Department of Natural Resources, its Offices or Commissions, as herein above reserved.

Applicant: THEOPHILUS OIL, GAS & LAND SERVICES, LLC

Bidder	Cash Payment	Price/Acre	Rental	Oil	Gas	Other

Legend

18110017



ST MARTIN

T14S - R13E

BAYOU LONG

P.O.B.

GRASSY LAKE

LAKE PALOURDE

T15S - R12E



0 3,000 Feet

TRACT 45004 - Assumption and St. Martin Parishes, Louisiana

All of the lands now or formerly constituting the beds and bottoms of all water bodies of every nature and description as to which title is vested in the State of Louisiana, together with all islands arising therein and other lands formed by accretion or by reliction, where allowed by law, excepting tax adjudicated lands, and not presently under mineral lease on November 14, 2018, situated in Assumption and St. Martin Parishes, Louisiana, and more particularly described as follows: Beginning at a point having Coordinates of X = 2,064,199.38 and Y = 412,671.76; thence East 10,560.00 feet to a point having Coordinates of X = 2,074,759.38 and Y = 412,671.76; thence South 15,840.00 feet to a point having Coordinates of X = 2,074,759.38 and Y = 396,831.76; thence West 10,560.00 feet to a point having Coordinates of X = 2,064,199.38 and Y = 396,831.76; thence North 15,840.00 feet to the point of beginning, (This lease includes only waterbottoms claimed and owned by the state and specifically excludes any land which the state may claim or own and to which the mineral rights are vested in the state), containing approximately **1,353 acres**, all as more particularly outlined on a plat on file in the Office of Mineral Resources, Department of Natural Resources. All bearings, distances and coordinates are based on Louisiana Coordinate System of 1927, (North or South Zone), where applicable.

NOTE: The above description of the Tract nominated for lease has been provided and corrected, where required, exclusively by the nomination party. Any mineral lease selected from this Tract and awarded by the Louisiana State Mineral and Energy Board shall be without warranty of any kind, either express, implied, or statutory, including, but not limited to, the implied warranties of merchantability and fitness for a particular purpose. Should the mineral lease awarded by the Louisiana State Mineral and Energy Board be subsequently modified, cancelled or abrogated due to the existence of conflicting leases, operating agreements, private claims or other future obligations or conditions which may affect all or any portion of the leased Tract, it shall not relieve the Lessee of the obligation to pay any bonus due thereon to the Louisiana State Mineral and Energy Board, nor shall the Louisiana State Mineral and Energy Board be obligated to refund any consideration paid by the Lessor prior to such modification, cancellation, or abrogation, including, but not limited to, bonuses, rentals and royalties.

NOTE: The State of Louisiana does hereby reserve, and this lease shall be subject to, the imprescriptible right of surface use in the nature of a servitude in favor of the Department of Natural Resources, including its Offices and Commissions, for the sole purpose of implementing, constructing, servicing and maintaining approved coastal zone management and/or restoration projects. Utilization of any and all rights derived under this lease by the mineral lessee, its agents, successors or assigns, shall not interfere with nor hinder the reasonable surface use by the Department of Natural Resources, its Offices or Commissions, as herein above reserved.

Applicant: THEOPHILUS OIL, GAS & LAND SERVICES, LLC

Bidder	Cash Payment	Price/Acre	Rental	Oil	Gas	Other

Legend

- 18110018
- Active_Leases
- Counties

ASSUMPTION

BAYOU FELIX

BAYOU CHERAMI

SIMON PASS

ST MARTIN

P.O.B.

T14S - R13E

T15S - R13E



TRACT 45005 - St. Martin Parish, Louisiana

All of the lands now or formerly constituting the beds and bottoms of all water bodies of every nature and description as to which title is vested in the State of Louisiana, together with all islands arising therein and other lands formed by accretion or by reliction, where allowed by law, excepting tax adjudicated lands, and not presently under mineral lease on November 14, 2018, situated in St. Martin Parish, Louisiana, and more particularly described as follows: Beginning at a point having Coordinates of X = 2,064,199.38 and Y = 396,831.76; thence South 10,560.00 feet to a point having Coordinates of X = 2,064,199.38 and Y = 386,271.76; thence West approximately 15,281 feet to a point on the East boundary of the Atchafalaya Basin having a Coordinate of Y = 386,271.76; thence Northeasterly and Northerly along said boundary of said Atchafalaya Basin to a point of intersection with a line having a Coordinate of Y = 396,831.76; then East approximately 14,036 feet to the point of beginning, **LESS AND EXCEPT** all that portion, if any, of the above described tract that may fall within the boundary of the Atchafalaya Basin, (This lease includes only waterbottoms claimed and owned by the state and specifically excludes any land which the state may claim or own and to which the mineral rights are vested in the state), containing approximately **2,293 acres**, all as more particularly outlined on a plat on file in the Office of Mineral Resources, Department of Natural Resources. All bearings, distances and coordinates are based on Louisiana Coordinate System of 1927, (North or South Zone), where applicable.

NOTE: The above description of the Tract nominated for lease has been provided and corrected, where required, exclusively by the nomination party. Any mineral lease selected from this Tract and awarded by the Louisiana State Mineral and Energy Board shall be without warranty of any kind, either express, implied, or statutory, including, but not limited to, the implied warranties of merchantability and fitness for a particular purpose. Should the mineral lease awarded by the Louisiana State Mineral and Energy Board be subsequently modified, cancelled or abrogated due to the existence of conflicting leases, operating agreements, private claims or other future obligations or conditions which may affect all or any portion of the leased Tract, it shall not relieve the Lessee of the obligation to pay any bonus due thereon to the Louisiana State Mineral and Energy Board, nor shall the Louisiana State Mineral and Energy Board be obligated to refund any consideration paid by the Lessor prior to such modification, cancellation, or abrogation, including, but not limited to, bonuses, rentals and royalties.

NOTE: The State of Louisiana does hereby reserve, and this lease shall be subject to, the imprescriptible right of surface use in the nature of a servitude in favor of the Department of Natural Resources, including its Offices and Commissions, for the sole purpose of implementing, constructing, servicing and maintaining approved coastal zone management and/or restoration projects. Utilization of any and all rights derived under this lease by the mineral lessee, its agents, successors or assigns, shall not interfere with nor hinder the reasonable surface use by the Department of Natural Resources, its Offices or Commissions, as herein above reserved.

Applicant: THEOPHILUS OIL, GAS & LAND SERVICES, LLC

Bidder	Cash Payment	Price/Acre	Rental	Oil	Gas	Other

Legend

18110019



T15S - R13E

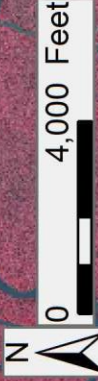
ST MARTIN

BAYOU MILHOMME

P.O.B.

LAKE PALOURDE

T16S - R12E



TRACT 45006 - Assumption and St. Martin Parishes, Louisiana

All of the lands now or formerly constituting the beds and bottoms of all water bodies of every nature and description as to which title is vested in the State of Louisiana, together with all islands arising therein and other lands formed by accretion or by reliction, where allowed by law, excepting tax adjudicated lands, and not presently under mineral lease on November 14, 2018, situated in Assumption and St. Martin Parishes, Louisiana, and more particularly described as follows: Beginning at a point having Coordinates of X = 2,064,199.38 and Y = 396,831.76; thence East 10,560.00 feet to a point having Coordinates of X = 2,074,759.38 and Y = 396,831.76; thence South 10,560.00 feet to a point having Coordinates of X = 2,074,759.38 and Y = 386,271.76; thence West 10,560.00 feet to a point having Coordinates of X = 2,064,199.38 and Y = 386,271.76; thence North 10,560.00 feet to the point beginning, (This lease includes only waterbottoms claimed and owned by the state and specifically excludes any land which the state may claim or own and to which the mineral rights are vested in the state), containing approximately **1,567 acres**, all as more particularly outlined on a plat on file in the Office of Mineral Resources, Department of Natural Resources. All bearings, distances and coordinates are based on Louisiana Coordinate System of 1927, (North or South Zone), where applicable.

NOTE: The above description of the Tract nominated for lease has been provided and corrected, where required, exclusively by the nomination party. Any mineral lease selected from this Tract and awarded by the Louisiana State Mineral and Energy Board shall be without warranty of any kind, either express, implied, or statutory, including, but not limited to, the implied warranties of merchantability and fitness for a particular purpose. Should the mineral lease awarded by the Louisiana State Mineral and Energy Board be subsequently modified, cancelled or abrogated due to the existence of conflicting leases, operating agreements, private claims or other future obligations or conditions which may affect all or any portion of the leased Tract, it shall not relieve the Lessee of the obligation to pay any bonus due thereon to the Louisiana State Mineral and Energy Board, nor shall the Louisiana State Mineral and Energy Board be obligated to refund any consideration paid by the Lessor prior to such modification, cancellation, or abrogation, including, but not limited to, bonuses, rentals and royalties.

NOTE: The State of Louisiana does hereby reserve, and this lease shall be subject to, the imprescriptible right of surface use in the nature of a servitude in favor of the Department of Natural Resources, including its Offices and Commissions, for the sole purpose of implementing, constructing, servicing and maintaining approved coastal zone management and/or restoration projects. Utilization of any and all rights derived under this lease by the mineral lessee, its agents, successors or assigns, shall not interfere with nor hinder the reasonable surface use by the Department of Natural Resources, its Offices or Commissions, as herein above reserved.

Applicant: THEOPHILUS OIL, GAS & LAND SERVICES, LLC

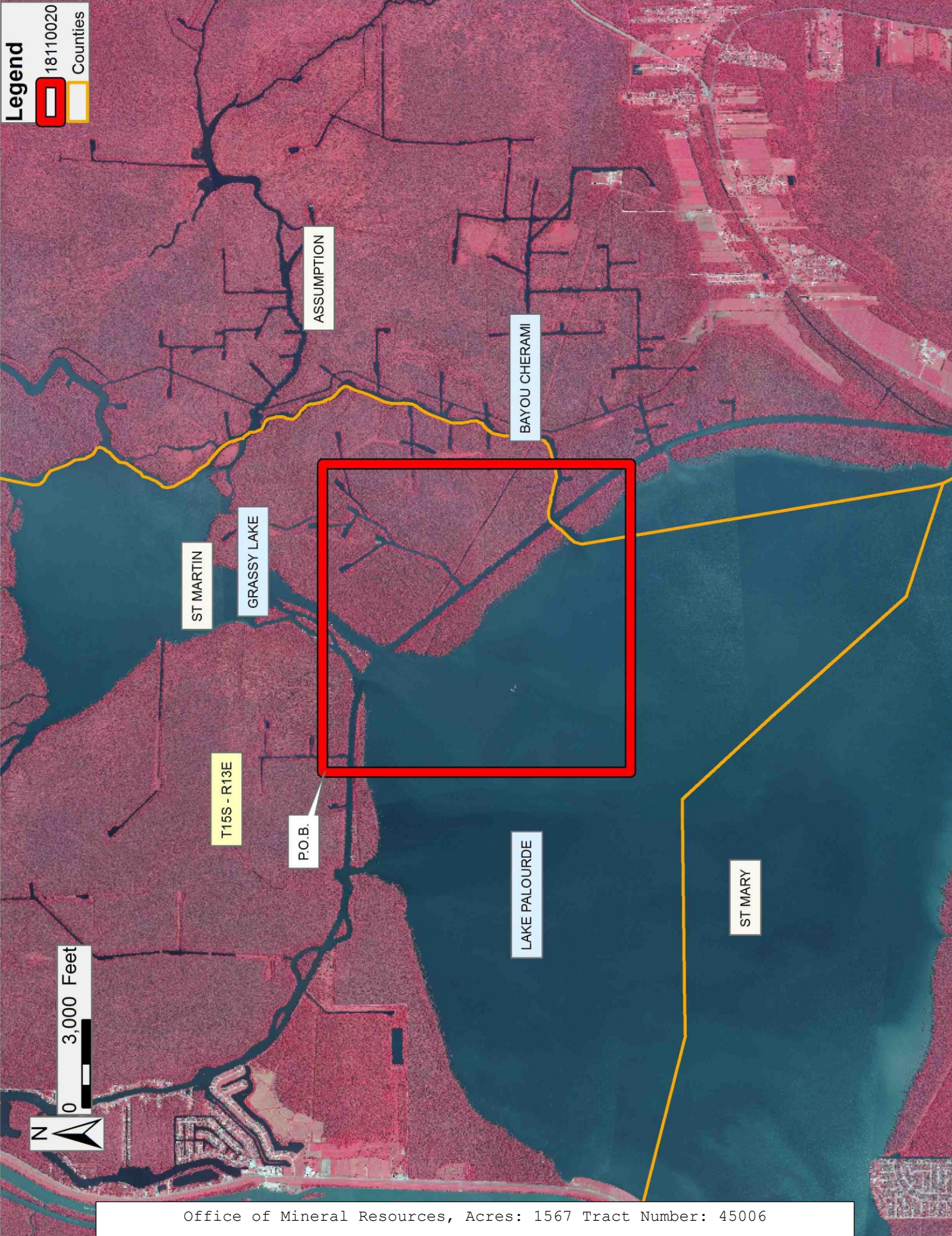
Bidder	Cash Payment	Price/Acre	Rental	Oil	Gas	Other

Legend

- 18110020
- Counties



0 3,000 Feet



Office of Mineral Resources, Acres: 1567 Tract Number: 45006

TRACT 45007 - St. Martin and St. Mary Parishes, Louisiana

All of the lands now or formerly constituting the beds and bottoms of all water bodies of every nature and description as to which title is vested in the State of Louisiana, together with all islands arising therein and other lands formed by accretion or by reliction, where allowed by law, excepting tax adjudicated lands, and not presently under mineral lease on November 14, 2018, situated in St. Martin and St. Mary Parishes, Louisiana, and more particularly described as follows: Beginning at a point having Coordinates of X = 2,064,199.38 and Y = 386,271.76; thence South 5,280.00 feet to a point having Coordinates of X = 2,064,199.38 and Y = 380,991.76; thence West 18,480.00 feet to a point having Coordinates of X = 2,045,719.38 and Y = 380,991.76; thence North approximately 4,201 feet to a point on the Southern boundary of the Atchafalaya Basin, having a Coordinate of X = 2,045,719.38; thence Easterly along said boundary of said Atchafalaya Basin to a point of intersection with a line having a Coordinate of Y = 386,271.76; then East approximately 15,281 feet to the point of beginning, **LESS AND EXCEPT** all that portion, if any, of the above described tract that may fall within the boundary of the Atchafalaya Basin, containing approximately **2,118 acres**, all as more particularly outlined on a plat on file in the Office of Mineral Resources, Department of Natural Resources. All bearings, distances and coordinates are based on Louisiana Coordinate System of 1927, (North or South Zone), where applicable.

NOTE: The above description of the Tract nominated for lease has been provided and corrected, where required, exclusively by the nomination party. Any mineral lease selected from this Tract and awarded by the Louisiana State Mineral and Energy Board shall be without warranty of any kind, either express, implied, or statutory, including, but not limited to, the implied warranties of merchantability and fitness for a particular purpose. Should the mineral lease awarded by the Louisiana State Mineral and Energy Board be subsequently modified, cancelled or abrogated due to the existence of conflicting leases, operating agreements, private claims or other future obligations or conditions which may affect all or any portion of the leased Tract, it shall not relieve the Lessee of the obligation to pay any bonus due thereon to the Louisiana State Mineral and Energy Board, nor shall the Louisiana State Mineral and Energy Board be obligated to refund any consideration paid by the Lessor prior to such modification, cancellation, or abrogation, including, but not limited to, bonuses, rentals and royalties.

NOTE: The State of Louisiana does hereby reserve, and this lease shall be subject to, the imprescriptible right of surface use in the nature of a servitude in favor of the Department of Natural Resources, including its Offices and Commissions, for the sole purpose of implementing, constructing, servicing and maintaining approved coastal zone management and/or restoration projects. Utilization of any and all rights derived under this lease by the mineral lessee, its agents, successors or assigns, shall not interfere with nor hinder the reasonable surface use by the Department of Natural Resources, its Offices or Commissions, as herein above reserved.

Applicant: THEOPHILUS OIL, GAS & LAND SERVICES, LLC

Bidder	Cash Payment	Price/Acre	Rental	Oil	Gas	Other

Legend



0 3,000 Feet

T15S - R13E

ST MARTIN

P.O.B.

FLAT LAKE

LAKE PALOURDE

ST MARY

T16S - R13E

TRACT 45008 - St. Martin and St. Mary Parishes, Louisiana

All of the lands now or formerly constituting the beds and bottoms of all water bodies of every nature and description as to which title is vested in the State of Louisiana, together with all islands arising therein and other lands formed by accretion or by reliction, where allowed by law, excepting tax adjudicated lands, and not presently under mineral lease on November 14, 2018, situated in St. Martin and St. Mary Parishes, Louisiana, and more particularly described as follows: Beginning at a point having Coordinates of X = 2,064,199.38 and Y = 386,271.76; thence East 5,280.00 feet to a point having Coordinates of X = 2,069,479.38 and Y = 386,271.76; thence South 15,840.00 feet to a point having Coordinates of X = 2,069,479.38 and Y = 370,431.76; thence West 5,280.00 feet to a point having Coordinates of X = 2,064,199.38 and Y = 370,431.76; thence North 15,840.00 feet to the point of beginning, containing approximately **1,635 acres**, all as more particularly outlined on a plat on file in the Office of Mineral Resources, Department of Natural Resources. All bearings, distances and coordinates are based on Louisiana Coordinate System of 1927, (North or South Zone), where applicable.

NOTE: The above description of the Tract nominated for lease has been provided and corrected, where required, exclusively by the nomination party. Any mineral lease selected from this Tract and awarded by the Louisiana State Mineral and Energy Board shall be without warranty of any kind, either express, implied, or statutory, including, but not limited to, the implied warranties of merchantability and fitness for a particular purpose. Should the mineral lease awarded by the Louisiana State Mineral and Energy Board be subsequently modified, cancelled or abrogated due to the existence of conflicting leases, operating agreements, private claims or other future obligations or conditions which may affect all or any portion of the leased Tract, it shall not relieve the Lessee of the obligation to pay any bonus due thereon to the Louisiana State Mineral and Energy Board, nor shall the Louisiana State Mineral and Energy Board be obligated to refund any consideration paid by the Lessor prior to such modification, cancellation, or abrogation, including, but not limited to, bonuses, rentals and royalties.

NOTE: The State of Louisiana does hereby reserve, and this lease shall be subject to, the imprescriptible right of surface use in the nature of a servitude in favor of the Department of Natural Resources, including its Offices and Commissions, for the sole purpose of implementing, constructing, servicing and maintaining approved coastal zone management and/or restoration projects. Utilization of any and all rights derived under this lease by the mineral lessee, its agents, successors or assigns, shall not interfere with nor hinder the reasonable surface use by the Department of Natural Resources, its Offices or Commissions, as herein above reserved.

Applicant: THEOPHILUS OIL, GAS & LAND SERVICES, LLC

Bidder	Cash Payment	Price/Acre	Rental	Oil	Gas	Other

Legend

- 18110024
- Counties



0 3,000 Feet

ST MARTIN

P.O.B.

ST MARY

LAKE PALOURDE

ASSUMPTION

T16S - R13E

T16S - R13E

TRACT 45009 - Assumption St. Martin and St. Mary Parishes, Louisiana

All of the lands now or formerly constituting the beds and bottoms of all water bodies of every nature and description as to which title is vested in the State of Louisiana, together with all islands arising therein and other lands formed by accretion or by reliction, where allowed by law, excepting tax adjudicated lands, and not presently under mineral lease on November 14, 2018, situated in Assumption St. Martin and St. Mary Parishes, Louisiana, and more particularly described as follows: Beginning at a point having Coordinates of X = 2,069,479.38 and Y = 386,271.76; thence East 10,560.00 feet to a point having Coordinates of X = 2,080,039.38 and Y = 386,271.76; thence South 15,840.00 feet to a point having Coordinates of X = 2,080,039.38 and Y = 370,431.76; thence West 10,560.00 feet to a point having Coordinates of X = 2,069,479.38 and Y = 370,431.76; thence North 15,840.00 feet to the point of beginning, containing approximately **1,733 acres**, all as more particularly outlined on a plat on file in the Office of Mineral Resources, Department of Natural Resources. All bearings, distances and coordinates are based on Louisiana Coordinate System of 1927, (North or South Zone), where applicable.

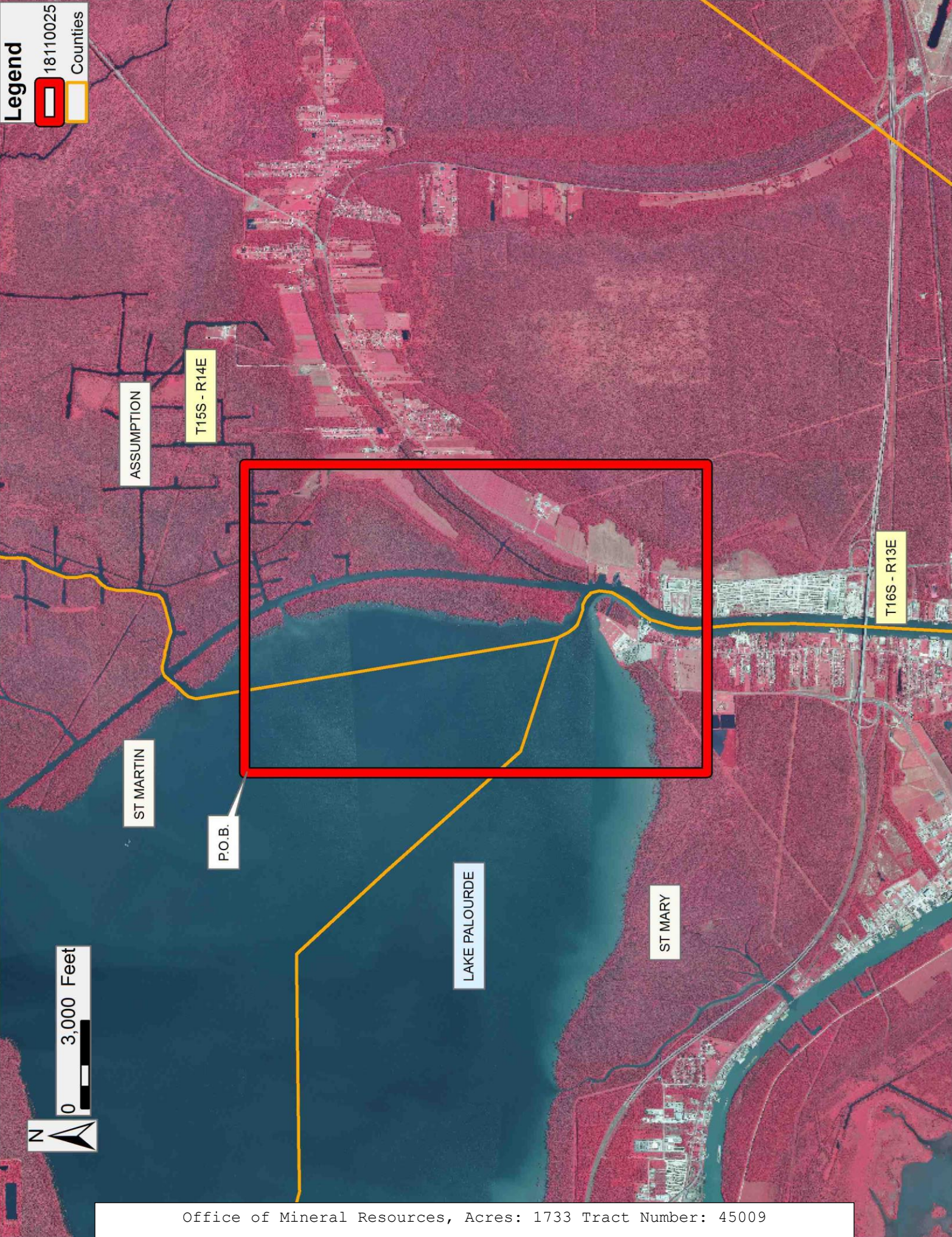
NOTE: The above description of the Tract nominated for lease has been provided and corrected, where required, exclusively by the nomination party. Any mineral lease selected from this Tract and awarded by the Louisiana State Mineral and Energy Board shall be without warranty of any kind, either express, implied, or statutory, including, but not limited to, the implied warranties of merchantability and fitness for a particular purpose. Should the mineral lease awarded by the Louisiana State Mineral and Energy Board be subsequently modified, cancelled or abrogated due to the existence of conflicting leases, operating agreements, private claims or other future obligations or conditions which may affect all or any portion of the leased Tract, it shall not relieve the Lessee of the obligation to pay any bonus due thereon to the Louisiana State Mineral and Energy Board, nor shall the Louisiana State Mineral and Energy Board be obligated to refund any consideration paid by the Lessor prior to such modification, cancellation, or abrogation, including, but not limited to, bonuses, rentals and royalties.

NOTE: The State of Louisiana does hereby reserve, and this lease shall be subject to, the imprescriptible right of surface use in the nature of a servitude in favor of the Department of Natural Resources, including its Offices and Commissions, for the sole purpose of implementing, constructing, servicing and maintaining approved coastal zone management and/or restoration projects. Utilization of any and all rights derived under this lease by the mineral lessee, its agents, successors or assigns, shall not interfere with nor hinder the reasonable surface use by the Department of Natural Resources, its Offices or Commissions, as herein above reserved.

Applicant: THEOPHILUS OIL, GAS & LAND SERVICES, LLC

Bidder	Cash Payment	Price/Acre	Rental	Oil	Gas	Other

Legend
18110025
Counties



0 3,000 Feet



Office of Mineral Resources, Acres: 1733 Tract Number: 45009

TRACT 45010 - St. Mary Parish, Louisiana

All of the lands now or formerly constituting the beds and bottoms of all water bodies of every nature and description as to which title is vested in the State of Louisiana, together with all islands arising therein and other lands formed by accretion or by reliction, where allowed by law, excepting tax adjudicated lands, and not presently under mineral lease on November 14, 2018, situated in St. Mary Parish, Louisiana, and more particularly described as follows: Beginning at a point having Coordinates of X = 2,058,919.38 and Y = 380,991.76; thence East 5,280.00 feet to a point having Coordinates of X = 2,064,199.38 and Y = 380,991.76; thence South 10,560.00 feet to a point having Coordinates of X = 2,064,199.38 and Y = 370,431.76; thence West 5,280.00 feet to a point having Coordinates of X = 2,058,919.38 and Y = 370,431.76; thence North 10,560.00 feet to the point of beginning, **LESS AND EXCEPT** any right, title, and interest in lands owned by and not under lease from the State of Louisiana, on behalf of the St. Mary Parish School Board, situated in Section 16, Township 16 South, Range 13 East, St. Mary Parish, Louisiana, contained within the above described tract, (This lease includes only waterbottoms claimed and owned by the state and specifically excludes any land which the state may claim or own and to which the mineral rights are vested in the state), containing approximately **774 acres**, all as more particularly outlined on a plat on file in the Office of Mineral Resources, Department of Natural Resources. All bearings, distances and coordinates are based on Louisiana Coordinate System of 1927, (North or South Zone), where applicable.

NOTE: The above description of the Tract nominated for lease has been provided and corrected, where required, exclusively by the nomination party. Any mineral lease selected from this Tract and awarded by the Louisiana State Mineral and Energy Board shall be without warranty of any kind, either express, implied, or statutory, including, but not limited to, the implied warranties of merchantability and fitness for a particular purpose. Should the mineral lease awarded by the Louisiana State Mineral and Energy Board be subsequently modified, cancelled or abrogated due to the existence of conflicting leases, operating agreements, private claims or other future obligations or conditions which may affect all or any portion of the leased Tract, it shall not relieve the Lessee of the obligation to pay any bonus due thereon to the Louisiana State Mineral and Energy Board, nor shall the Louisiana State Mineral and Energy Board be obligated to refund any consideration paid by the Lessor prior to such modification, cancellation, or abrogation, including, but not limited to, bonuses, rentals and royalties.

NOTE: The State of Louisiana does hereby reserve, and this lease shall be subject to, the imprescriptible right of surface use in the nature of a servitude in favor of the Department of Natural Resources, including its Offices and Commissions, for the sole purpose of implementing, constructing, servicing and maintaining approved coastal zone management and/or restoration projects. Utilization of any and all rights derived under this lease by the mineral lessee, its agents, successors or assigns, shall not

interfere with nor hinder the reasonable surface use by the Department of Natural Resources, its Offices or Commissions, as herein above reserved.

Applicant: THEOPHILUS OIL, GAS & LAND SERVICES, LLC

Bidder	Cash Payment	Price/Acre	Rental	Oil	Gas	Other

Legend

18110023



Office of Mineral Resources, Acres: 774 Tract Number: 45010