

**TRACT 44608 - Plaquemines Parish, Louisiana**

All of the lands now or formerly constituting the beds and bottoms of all water bodies of every nature and description as to which title is vested in the State of Louisiana, together with all islands arising therein and other lands formed by accretion or by reliction, where allowed by law, excepting tax adjudicated lands, and not presently under mineral lease on November 9, 2016, situated in Plaquemines Parish, Louisiana, and more particularly described as follows: Beginning at a point on the North line of Tract 3 of State Lease No. 1464, as amended having Coordinates of X = 2,499,662.20 and Y = 259,743.42; thence North 88 degrees 48 minutes 27 seconds West 1,453.15 feet along the North boundary of said Tract 3 of State Lease No. 1464 to its Northwest corner having Coordinates of X = 2,498,209.36 and Y = 259,773.66; thence West 219.27 feet to a point having Coordinates of X = 2,497,990.09 and Y = 259,773.66; thence North 02 degrees 15 minutes 47 seconds West 971.63 feet to a point having Coordinates of X = 2,497,951.73 and Y = 260,744.53 being the intersection point between the West line of State Lease No. 17266 and the CM 288 RE SUA Unit Order No. 149 PPP 2; thence along the outer perimeter of said CM 288 RE SUA Unit Order No. 149 PPP 2 North 54 degrees 36 minutes 26 seconds East 10.32 feet to a point having Coordinates of X = 2,497,960.14 and Y = 260,750.51; thence along the outer perimeter of said CM 288 RE SUA Unit Order No. 149 PPP 2 North 47 degrees 08 minutes 11 seconds East 29.40 feet to a point having Coordinates of X = 2,497,981.69 and Y = 260,770.51; thence along the outer perimeter of said CM 288 RE SUA Unit Order No. 149 PPP 2 North 38 degrees 20 minutes 00 seconds East 27.41 feet to a point having Coordinates of X = 2,497,998.69 and Y = 260,792.01; thence along the outer perimeter of said CM 288 RE SUA Unit Order No. 149 PPP 2 North 29 degrees 54 minutes 54 seconds East 50.13 feet to a point having Coordinates of X = 2,498,023.69 and Y = 260,835.46; thence along the outer perimeter of said CM 288 RE SUA Unit Order No. 149 PPP 2 North 21 degrees 11 minutes 17 seconds East 45.10 feet to a point having Coordinates of X = 2,498,039.99 and Y = 260,877.51; thence along the outer perimeter of said CM 288 RE SUA Unit Order No. 149 PPP 2 North 11 degrees 29 minutes 12 seconds East 57.25 feet to a point having Coordinates of X = 2,498,051.39 and Y = 260,933.61; thence along the outer perimeter of said CM 288 RE SUA Unit Order No. 149 PPP 2 North 06 degrees 46 minutes 02 seconds East 40.73 feet to a point having Coordinates of X = 2,498,056.19 and Y = 260,974.06; thence along the outer perimeter of said CM 288 RE SUA Unit Order No. 149 PPP 2 North 02 degrees 39 minutes 58 seconds East 43.00 feet to a point having Coordinates of X = 2,498,058.19 and Y = 261,017.01; thence along the outer perimeter of said CM 288 RE SUA Unit Order No. 149 PPP 2 North 02 degrees 13 minutes 33 seconds West 28.32 feet to a point having Coordinates of X = 2,498,057.09 and Y = 261,045.31; thence along the outer perimeter of said CM 288 RE SUA Unit Order No. 149 PPP 2 North 08 degrees 07 minutes 48 seconds West 26.52 feet to a point having Coordinates of X = 2,498,053.34 and Y = 261,071.56; thence along the outer perimeter of said CM 288 RE SUA Unit Order No. 149 PPP 2 South 80 degrees 15 minutes 29 seconds West 79.19 feet to a point having Coordinates of X = 2,497,975.29 and Y = 261,058.16; thence along the outer perimeter of said CM 288 RE SUA

Unit Order No. 149 PPP 2 South 77 degrees 15 minutes 43 seconds West 36.54 feet to a point being the intersection point between the West line of State Lease No. 17266 and the CM 288 RE SUA Unit Order No. 149 PPP 2 having Coordinates of X = 2,497,939.65 and Y = 261,050.10; thence North 02 degrees 15 minutes 47 seconds West 2,822.33 feet to a point being on the South line of Tract 2 of State Lease No. 1464 having Coordinates of X = 2,497,828.21 and Y = 263,870.23; thence North 87 degrees 34 minutes 46 seconds East 81.21 feet along the boundary of said Tract 2 of State Lease No. 1464 to a point having Coordinates of X = 2,497,909.35 and Y = 263,873.66; thence North 87 degrees 34 minutes 56 seconds East 1,754.41 feet along the boundary of said Tract 2 of State Lease No. 1464 to a point being the Northwesterly corner of State Lease No. 21018 having Coordinates of X = 2,499,662.20 and Y = 263,947.67; thence South 4,204.25 feet along the West line of State Lease No. 21018 to the point of beginning, **LESS AND EXCEPT** that certain unit within State Lease No. 17266 4400 RC SUA ORDER NO. 149 JJJ 9 as described hereto: Beginning at a point on the 4400 RC SUA UNIT UNIT ORDER 149 JJJ 9 having Coordinates of X = 2,499,024.81 and Y = 260,845.28; thence North 17 degrees 48 minutes 43 seconds West 71.27 feet to a point having Coordinates of X = 2,499,003.01 and Y = 260,913.13; thence North 22 degrees 44 minutes 20 seconds West 85.12 feet to a point having Coordinates of X = 2,498,970.11 and Y = 260,991.63; thence South 84 degrees 07 minutes 35 seconds West 24.14 feet to a point having Coordinates of X = 2,498,946.10 and Y = 260,989.16; thence North 19 degrees 09 minutes 04 seconds West 32.89 feet to a point having Coordinates of X = 2,498,935.31 and Y = 261,020.23; thence South 87 degrees 52 minutes 17 seconds West 240.97 feet to a point having Coordinates of X = 2,498,694.51 and Y = 261,011.28; thence South 03 degrees 57 minutes 37 seconds West 19.55 feet to a point having Coordinates of X = 2,498,693.16 and Y = 260,991.78; thence South 89 degrees 08 minutes 04 seconds West 16.55 feet to a point having Coordinates of X = 2,498,676.61 and Y = 260,991.53; thence South 10 degrees 03 minutes 03 seconds West 23.21 feet to a point having Coordinates of X = 2,498,672.56 and Y = 260,968.68; thence South 88 degrees 14 minutes 50 seconds West 132.41 feet to a point having Coordinates of X = 2,498,540.21 and Y = 260,964.63; thence South 03 degrees 45 minutes 23 seconds West 19.21 feet to a point having Coordinates of X = 2,498,538.95 and Y = 260,945.46; thence South 03 degrees 45 minutes 23 seconds West 55.58 feet to a point having Coordinates of X = 2,498,535.31 and Y = 260,890.00; thence South 99.27 feet to a point having Coordinates of X = 2,498,535.31 and Y = 260,790.73; thence South 05 degrees 18 minutes 36 seconds East 44.84 feet to a point having Coordinates of X = 2,498,539.46 and Y = 260,746.08; thence South 08 degrees 00 minutes 56 seconds East 28.33 feet to a point having Coordinates of X = 2,498,543.41 and Y = 260,718.03; thence South 12 degrees 33 minutes 11 seconds East 51.07 feet to a point having Coordinates of X = 2,498,554.51 and Y = 260,668.18; thence South 18 degrees 54 minutes 16 seconds East 50.16 feet to a point having Coordinates of X = 2,498,570.76 and Y = 260,620.73; thence South 23 degrees 48 minutes 48 seconds East 52.63

feet to a point having Coordinates of X = 2,498,592.01 and Y = 260,572.58; thence South 27 degrees 52 minutes 55 seconds East 68.11 feet to a point having Coordinates of X = 2,498,623.86 and Y = 260,512.38; thence South 32 degrees 10 minutes 32 seconds East 62.44 feet to a point having Coordinates of X = 2,498,657.11 and Y = 260,459.53; thence North 87 degrees 52 minutes 41 seconds East 128.29 feet to a point having Coordinates of X = 2,498,785.31 and Y = 260,464.28; thence South 09 degrees 56 minutes 26 seconds West 14.77 feet to a point having Coordinates of X = 2,498,782.76 and Y = 260,449.73; thence North 87 degrees 53 minutes 46 seconds East 239.71 feet to a point having Coordinates of X = 2,499,022.31 and Y = 260,458.53; thence North 06 degrees 58 minutes 06 seconds East 13.60 feet to a point having Coordinates of X = 2,499,023.96 and Y = 260,472.03; thence North 88 degrees 44 minutes 49 seconds East 16.00 feet to a point having Coordinates of X = 2,499,039.96 and Y = 260,472.38; thence North 01 degrees 33 minutes 11 seconds East 46.12 feet to a point having Coordinates of X = 2,499,041.21 and Y = 260,518.48; thence North 00 degrees 23 minutes 44 seconds East 50.70 feet to a point having Coordinates of X = 2,499,041.56 and Y = 260,569.18; thence North 00 degrees 13 minutes 29 seconds West 38.25 feet to a point having Coordinates of X = 2,499,041.41 and Y = 260,607.43; thence North 00 degrees 54 minutes 08 seconds West 38.10 feet to a point having Coordinates of X = 2,499,040.81 and Y = 260,645.53; thence North 01 degrees 28 minutes 22 seconds West 36.96 feet to a point having Coordinates of X = 2,499,039.86 and Y = 260,682.48; thence North 02 degrees 03 minutes 58 seconds West 34.67 feet to a point having Coordinates of X = 2,499,038.61 and Y = 260,717.13; thence North 02 degrees 50 minutes 22 seconds West 31.29 feet to a point having Coordinates of X = 2,499,037.06 and Y = 260,748.38; thence North 03 degrees 50 minutes 33 seconds West 26.86 feet to a point having Coordinates of X = 2,499,035.26 and Y = 260,775.18; thence North 06 degrees 49 minutes 49 seconds West 36.16 feet to a point having Coordinates of X = 2,499,030.96 and Y = 260,811.08; thence North 10 degrees 11 minutes 39 seconds West 34.75 feet to the point of beginning and containing approximately 5.752 acres, the tracts above containing approximately **92.217 acres**, all as more particularly outlined on a plat on file in the Office of Mineral Resources, Department of Natural Resources. All bearings, distances and coordinates are based on Louisiana Coordinate System of 1927, (North or South Zone), where applicable.

NOTE: The above description of the Tract nominated for the purpose of acquiring a mineral lease or a geophysical agreement has been provided and corrected, where required, exclusively by the nominating party. Any mineral lease or geophysical agreement selected from this Tract and awarded by the Louisiana State Mineral and Energy Board shall be without warranty of any kind, either express, implied or statutory including, but not limited to, title or the implied warranties of merchantability and fitness for a particular purpose.

An error or omission in the nominating party's Tract description may require that a State mineral lease or geophysical agreement be modified, canceled or abrogated due to the existence of conflicting leases, operating agreements, private claims or other future obligations or conditions within the Tract described. In such case, however, the Louisiana State Mineral and Energy Board shall not be obligated to refund any consideration paid by the Lessee prior to such modification, cancellation or abrogation including, but not limited to, bonuses, rentals and royalties.

NOTE: The State of Louisiana does hereby reserve, and this lease shall be subject to, the imprescriptible right of surface use in the nature of a servitude in favor of the Department of Natural Resources, including its Offices and Commissions, for the sole purpose of implementing, constructing, servicing and maintaining approved coastal zone management and/or restoration projects. Utilization of any and all rights derived under this lease by the mineral lessee, its agents, successors or assigns, shall not interfere with nor hinder the reasonable surface use by the Department of Natural Resources, its Offices or Commissions, as herein above reserved.

Applicant: LESLIE M. COOPER

Bidder	Cash Payment	Price/Acre	Rental	Oil	Gas	Other

**Legend**

- 16110008
- Active\_Leases
- Freeze\_Statute



**Legend**

- 16110008
- Active\_Leases
- Freeze\_Statute



**TRACT 44609 - Portion of Block 53, West Delta Area, Plaquemines Parish, Louisiana**

All of the lands now or formerly constituting the beds and bottoms of all water bodies of every nature and description as to which title is vested in the State of Louisiana, together with all islands arising therein and other lands formed by accretion or by reliction, where allowed by law, excepting tax adjudicated lands, and not presently under mineral lease on November 9, 2016, situated in Plaquemines Parish, Louisiana, and more particularly described as follows: Beginning at the Northeast corner of the West portion of State Lease No. 978, as amended having Coordinates of X = 2,630,077.93 and Y = 138,776.30; thence East 6,486.87 feet to a point on the West boundary of the east portion of State Lease No. 978, as amended having Coordinates of X = 2,636,564.80 and Y = 138,776.30; thence along the boundaries of said East portion of said State Lease No. 978 the following courses: South 23 degrees 16 minutes 44 seconds West 2,314.74 feet to a point having Coordinates of X = 2,635,650.00 and Y = 136,650.00, South 21 degrees 44 minutes 59 seconds East 1,507.13 feet to a point having Coordinates of X = 2,636,208.47 and Y = 135,250.16 and Southeasterly to its point of intersection with the west boundary of State Lease No. 2227, as amended; thence Southwesterly along the West boundary of said State Lease No. 2227 to a point of intersection with a line having a bearing of South 62 degrees 36 minutes 06 seconds East from a point having Coordinates of X = 2,634,876.47 and Y = 133,111.62; thence Northwesterly along a line having a bearing of North 62 degrees 36 minutes 06 seconds West to the Northeast corner of Operating Agreement A0303 having Coordinates of X = 2,634,876.47 and Y = 133,111.62; thence along the boundaries of said Operating Agreement A0303 the following courses: North 62 degrees 36 minutes 06 seconds West 1,327.00 feet to a point having Coordinates of X = 2,633,698.32 and Y = 133,722.27 and South 26 degrees 32 minutes 33 seconds West 3,080.22 feet to its Southwest corner and a point on the North boundary of Operating Agreement A0160 having Coordinates of X = 2,632,321.88 and Y = 130,966.70; thence along the boundaries of said Operating Agreement A0160 the following courses: North 58 degrees 13 minutes 19 seconds West 1,962.10 feet to a point having Coordinates of X = 2,630,653.91 and Y = 132,000.00 and West 575.98 feet to the Southeast corner of said West portion of State Lease No. 978 having Coordinates of X = 2,630,077.93 and Y = 132,000.00; thence North 6,776.30 feet to the point of beginning, containing approximately **880 acres**, all as more particularly outlined on a plat on file in the Office of Mineral Resources, Department of Natural Resources. All bearings, distances and coordinates are based on Louisiana Coordinate System of 1927, (North or South Zone), where applicable.

NOTE: The above description of the Tract nominated for the purpose of acquiring a mineral lease or a geophysical agreement has been provided and corrected, where required, exclusively by the nominating party. Any mineral lease or geophysical agreement selected from this Tract and awarded by the Louisiana State Mineral and Energy Board shall be without warranty of any kind, either express, implied or statutory including, but

not limited to, title or the implied warranties of merchantability and fitness for a particular purpose.

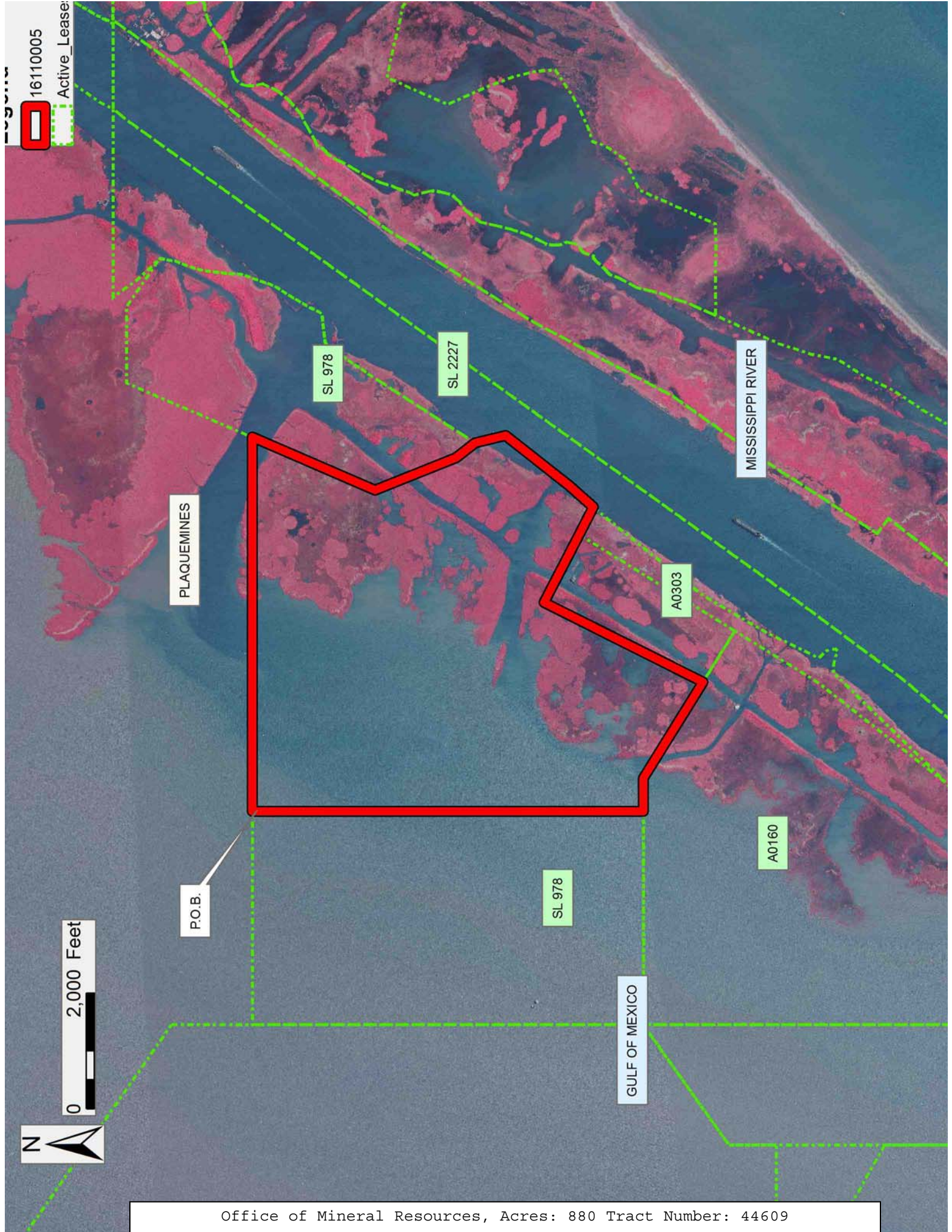
An error or omission in the nominating party's Tract description may require that a State mineral lease or geophysical agreement be modified, canceled or abrogated due to the existence of conflicting leases, operating agreements, private claims or other future obligations or conditions within the Tract described. In such case, however, the Louisiana State Mineral and Energy Board shall not be obligated to refund any consideration paid by the Lessee prior to such modification, cancellation or abrogation including, but not limited to, bonuses, rentals and royalties.

NOTE: The State of Louisiana does hereby reserve, and this lease shall be subject to, the imprescriptible right of surface use in the nature of a servitude in favor of the Department of Natural Resources, including its Offices and Commissions, for the sole purpose of implementing, constructing, servicing and maintaining approved coastal zone management and/or restoration projects. Utilization of any and all rights derived under this lease by the mineral lessee, its agents, successors or assigns, shall not interfere with nor hinder the reasonable surface use by the Department of Natural Resources, its Offices or Commissions, as herein above reserved.

Applicant: CYPRESS ENERGY CORPORATION

Bidder	Cash Payment	Price/Acre	Rental	Oil	Gas	Other





16110005

Active Lease

PLAQUEMINES

SL 978

SL 2227

MISSISSIPPI RIVER

A0303

A0160

SL 978

P.O.B.

GULF OF MEXICO

0 2,000 Feet



**TRACT 44610 - Plaquemines Parish, Louisiana**

All of the lands now or formerly constituting the beds and bottoms of all water bodies of every nature and description as to which title is vested in the State of Louisiana, together with all islands arising therein and other lands formed by accretion or by reliction, where allowed by law, excepting tax adjudicated lands, and not presently under mineral lease on November 9, 2016, situated in Plaquemines Parish, Louisiana, and more particularly described as follows: Beginning at a point on the Louisiana Coastline, as decreed by the Supreme Court of the United States, as determined by a Special Master appointed therein, in litigation styled *United States v. State of Louisiana et al No. 9 Original*, in 1975, having Coordinates of X = 2,644,940 and Y = 134,910; thence Southwesterly on a straight line to a point having Coordinates of X = 2,641,835 and Y = 129,725; thence Southwesterly on a straight line to a point having Coordinates of X = 2,639,545 and Y = 126,825; thence Southwesterly on a straight line to a point having Coordinates of X = 2,638,945 and Y = 126,780; thence Southwesterly on a straight line to a point having Coordinates of X = 2,638,542.98 and Y = 126,424.00; thence Southwesterly on a straight line to a point having Coordinates of X = 2,635,800.00 and Y = 123,995.00; thence Southwesterly on a straight line to a point of intersection with State Lease No. 2227, as amended; thence Northeasterly along the boundary of said State Lease No. 2227 to the Southwest corner of State Lease No. 1009; thence along the boundaries of said State Lease No. 1009 the following courses: Easterly approximately 1,584 feet to a point having Coordinates of X = 2,640,260.00 and Y = 130,750.00, North 24 degrees 02 minutes 48 seconds East 1,445.44 feet, North 63 degrees 57 minutes 18 seconds East 296.08 feet, North 64 degrees 17 minutes 24 seconds East 299.67 feet, North 35 degrees 13 minutes 03 seconds East 312.13 feet, North 28 degrees 18 minutes 03 second East 147.65 feet, North 16 degrees 51 minutes 30 seconds East 172.41 feet, North 71 degrees 53 minutes 46 seconds East 273.54 feet, North 66 degrees 08 minutes 23 seconds East 284.30 feet, North 62 degrees 02 minutes 57 seconds East 277.35 feet, North 56 degrees 51 minutes 11 seconds East 292.62 feet, North 56 degrees 18 minutes 36 seconds East 288.44 feet, North 05 degrees 42 minutes 38 seconds West 351.75 feet, North 13 degrees 27 minutes 55 seconds West 365.03 feet, North 20 degrees 20 minutes 39 seconds west 474.61 feet, North 24 degrees 12 minutes 03 second West 487.88 feet, North 23 degrees 29 minutes 41 seconds West 294.41 feet, North 24 degrees 02 minutes 48 seconds East 1,147.01 feet, South 77 degrees 11 minutes 10 seconds East 1,271.52 feet and South 45 degrees 34 minutes 34 seconds East 1,679.67 feet to a point of intersection with said Coastline having Coordinates of X = 2,645,239.45 and Y = 134,984.77; thence Southwesterly along a straight line to the point of beginning, **LESS AND EXCEPT** any portion of said State Lease No. 1009 and State Lease No. 2227, that may lie within the above described tract, containing approximately containing approximately **661 acres**, all as more particularly outlined on a plat on file in the Office of Mineral Resources, Department of Natural Resources. All bearings, distances and coordinates are based on Louisiana Coordinate System of 1927, (North or South Zone), where applicable.

NOTE: The above description of the Tract nominated for the purpose of acquiring a mineral lease or a geophysical agreement has been provided and corrected, where required, exclusively by the nominating party. Any mineral lease or geophysical agreement selected from this Tract and awarded by the Louisiana State Mineral and Energy Board shall be without warranty of any kind, either express, implied or statutory including, but not limited to, title or the implied warranties of merchantability and fitness for a particular purpose.

An error or omission in the nominating party's Tract description may require that a State mineral lease or geophysical agreement be modified, canceled or abrogated due to the existence of conflicting leases, operating agreements, private claims or other future obligations or conditions within the Tract described. In such case, however, the Louisiana State Mineral and Energy Board shall not be obligated to refund any consideration paid by the Lessee prior to such modification, cancellation or abrogation including, but not limited to, bonuses, rentals and royalties.

NOTE: The State of Louisiana does hereby reserve, and this lease shall be subject to, the imprescriptible right of surface use in the nature of a servitude in favor of the Department of Natural Resources, including its Offices and Commissions, for the sole purpose of implementing, constructing, servicing and maintaining approved coastal zone management and/or restoration projects. Utilization of any and all rights derived under this lease by the mineral lessee, its agents, successors or assigns, shall not interfere with nor hinder the reasonable surface use by the Department of Natural Resources, its Offices or Commissions, as herein above reserved.

Applicant: CYPRESS ENERGY CORPORATION

Bidder	Cash Payment	Price/Acre	Rental	Oil	Gas	Other

**Legend**

161110007  
Active\_Leases



**TRACT 44611 - Portion of Blocks 54, 55, 82, and 83, West Delta Area, Plaquemines Parish, Louisiana**

All of the lands now or formerly constituting the beds and bottoms of all water bodies of every nature and description as to which title is vested in the State of Louisiana, together with all islands arising therein and other lands formed by accretion or by reliction, where allowed by law, excepting tax adjudicated lands, and not presently under mineral lease on November 9, 2016, situated in Plaquemines Parish, Louisiana, and more particularly described as follows: Beginning at a point located on the Southwestern boundary of State Lease No. 979, as amended, having Coordinates of X = 2,615,927.93 and Y = 130,940.00; thence along said State Lease No. 979 the following courses and distances: East 4,499.97 feet, South 00 degrees 00 minutes 05 seconds West 1,240.00 feet to a point on the Northern boundary of State Lease No. 17379, as amended, having Coordinates of X = 2,620,427.93 and Y = 129,700.00; thence along said State Lease No. 17379, as amended, the following courses and distances: West 327.83 feet to a point having Coordinates X = 2,620,100.10 and Y = 129,700.00, and South 40 degrees 43 minutes 06 seconds West 4,965.50 feet to a point having Coordinates X = 2,616,860.90 and Y = 125,936.52, and South 48 degrees 44 minutes 04 seconds East 3,187.51 feet to its Southwest corner located on the line common to Blocks 54 and 83, having Coordinates of X = 2,619,256.83 and Y = 123,834.20, said point also being the Northwest corner of State Lease No. 17380, as amended; thence along the boundary of said State Lease No. 17380 the following courses and distances: South 48 degrees 44 minutes 04 seconds East 3,684.34 feet to a point having Coordinates of X = 2,622,026.21 and Y = 121,404.19 and North 43 degrees 05 minutes 57 seconds East 3,327.99 feet to its Northeast corner also being the Southwest corner of Operating Agreement 0161 located on the North line of said Block 83 having Coordinates of X = 2,624,300.10 and Y = 123,834.20; thence South 89 degrees 59 minutes 53 seconds East approximately 690 feet along the North line of said Block 83 to its point of intersection with the West boundary or a projection thereof of State Lease No. 2593, as amended; thence Southerly and Southeasterly along the said West boundary or a projection thereof of said State Lease No. 2593 to its point of intersection with the Northerly boundary of State Lease No. 2227; thence Westerly along the Northern boundary of said State Lease No. 2227 to its Northwest corner, also being the Northeast corner of State Lease No. 2565; thence Westerly and Southwesterly along the Northern and Western boundaries of said State Lease No. 2565 to a point of intersection with the Louisiana Coastline, as decreed by the Supreme Court of the United States, as determined by a Special Master appointed therein, in litigation styled *United States v. State of Louisiana et al* No. 9 Original, in 1975, having a Coordinate of X = 2,615,474.19; thence North 00 degrees 02 minutes 08 seconds West 8,622.00 feet along said Coastline to a point of intersection with the line common to Blocks 82 and 55, having Coordinates of X = 2,615,468.86 and Y = 123,834.20; thence North 00 degrees 01 minutes 43 seconds West 7,105.79 feet to a point having Coordinates X = 2,615,465.29 and Y = 130,940.00; thence East 462.64 feet to the point of beginning, **LESS AND EXCEPT**, any portion of Operating

Agreement 0161, State Lease No. 2227, State Lease No. 2565, and State Lease No. 2593 that may lie within the above described tract, **AND LESS AND EXCEPT**, any portion of United States Department of the Interior Lease of Oil and Gas No. LABLM 0013997 and LABLM 0016334 and that certain Oil, Gas and Mineral Lease, dated July 13, 1954, by and between, Mark Delesdernier, et ux and The California Company and that certain Oil, Gas and Mineral Lease, dated September 1, 1954, by and between, Delta Development Company, Inc. and The California Company, containing approximately **1,369 acres**, all as more particularly outlined on a plat on file in the Office of Mineral Resources, Department of Natural Resources. All bearings, distances and coordinates are based on Louisiana Coordinate System of 1927, (North or South Zone), where applicable.

NOTE: The above description of the Tract nominated for the purpose of acquiring a mineral lease or a geophysical agreement has been provided and corrected, where required, exclusively by the nominating party. Any mineral lease or geophysical agreement selected from this Tract and awarded by the Louisiana State Mineral and Energy Board shall be without warranty of any kind, either express, implied or statutory including, but not limited to, title or the implied warranties of merchantability and fitness for a particular purpose.

An error or omission in the nominating party's Tract description may require that a State mineral lease or geophysical agreement be modified, canceled or abrogated due to the existence of conflicting leases, operating agreements, private claims or other future obligations or conditions within the Tract described. In such case, however, the Louisiana State Mineral and Energy Board shall not be obligated to refund any consideration paid by the Lessee prior to such modification, cancellation or abrogation including, but not limited to, bonuses, rentals and royalties.

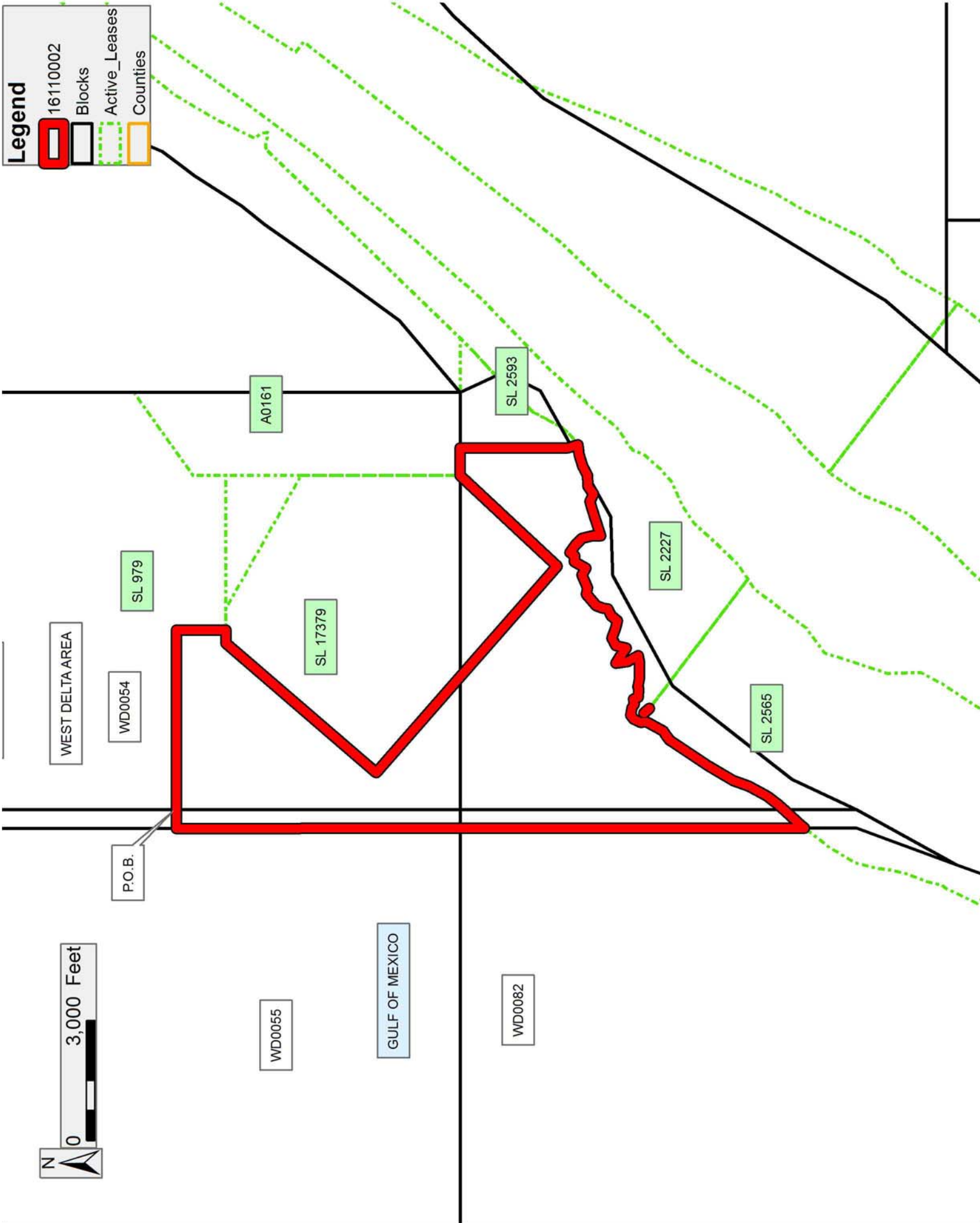
NOTE: The State of Louisiana does hereby reserve, and this lease shall be subject to, the imprescriptible right of surface use in the nature of a servitude in favor of the Department of Natural Resources, including its Offices and Commissions, for the sole purpose of implementing, constructing, servicing and maintaining approved coastal zone management and/or restoration projects. Utilization of any and all rights derived under this lease by the mineral lessee, its agents, successors or assigns, shall not interfere with nor hinder the reasonable surface use by the Department of Natural Resources, its Offices or Commissions, as herein above reserved.

Applicant: CYPRESS ENERGY CORPORATION

Bidder	Cash Payment	Price/Acre	Rental	Oil	Gas	Other

**Legend**

- 16110002 (Red outline)
- Blocks (Black outline)
- Active\_Leases (Green dotted line)
- Counties (Orange outline)





**TRACT 44612 - Portion of Block 54, West Delta Area, Plaquemines Parish, Louisiana**

All of the lands now or formerly constituting the beds and bottoms of all water bodies of every nature and description as to which title is vested in the State of Louisiana, together with all islands arising therein and other lands formed by accretion or by reliction, where allowed by law, excepting tax adjudicated lands, and not presently under mineral lease on November 9, 2016, situated in Plaquemines Parish, Louisiana, and more particularly described as follows: Beginning at a point on the Southeast corner of State Lease No. 979, as amended, also being a point on the West line of Operating Agreement A0161 having Coordinates of X = 2,624,300.10 and Y = 129,700.00; thence South 1,881.48 feet along the West Line of Operating Agreement A0161 to the Northeast corner of State Lease No. 17379 having Coordinates of X = 2,624,300.10 and Y = 127,818.52; thence North 60 degrees 34 minutes 53 seconds West 3,830.48 feet along the Northern boundary of said State Lease No. 17379 also being a point on the Southern boundary of said State Lease No. 979 having Coordinates of X = 2,620,963.54 and Y = 129,700.00; thence East 3,336.56 feet along the Southern boundary of said State Lease No. 979 to the point of beginning, **LESS AND EXCEPT** any portion of Operating Agreement A0160, as amended, that may lie within the above described tract, containing approximately **72.06 acres**, , all as more particularly outlined on a plat on file in the Office of Mineral Resources, Department of Natural Resources. All bearings, distances and coordinates are based on Louisiana Coordinate System of 1927, (North or South Zone), where applicable.

NOTE: The above description of the Tract nominated for the purpose of acquiring a mineral lease or a geophysical agreement has been provided and corrected, where required, exclusively by the nominating party. Any mineral lease or geophysical agreement selected from this Tract and awarded by the Louisiana State Mineral and Energy Board shall be without warranty of any kind, either express, implied or statutory including, but not limited to, title or the implied warranties of merchantability and fitness for a particular purpose.

An error or omission in the nominating party's Tract description may require that a State mineral lease or geophysical agreement be modified, canceled or abrogated due to the existence of conflicting leases, operating agreements, private claims or other future obligations or conditions within the Tract described. In such case, however, the Louisiana State Mineral and Energy Board shall not be obligated to refund any consideration paid by the Lessee prior to such modification, cancellation or abrogation including, but not limited to, bonuses, rentals and royalties.

NOTE: The State of Louisiana does hereby reserve, and this lease shall be subject to, the imprescriptible right of surface use in the nature of a servitude in favor of the Department of Natural Resources, including its Offices and Commissions, for the sole purpose of implementing,

constructing, servicing and maintaining approved coastal zone management and/or restoration projects. Utilization of any and all rights derived under this lease by the mineral lessee, its agents, successors or assigns, shall not interfere with nor hinder the reasonable surface use by the Department of Natural Resources, its Offices or Commissions, as herein above reserved.

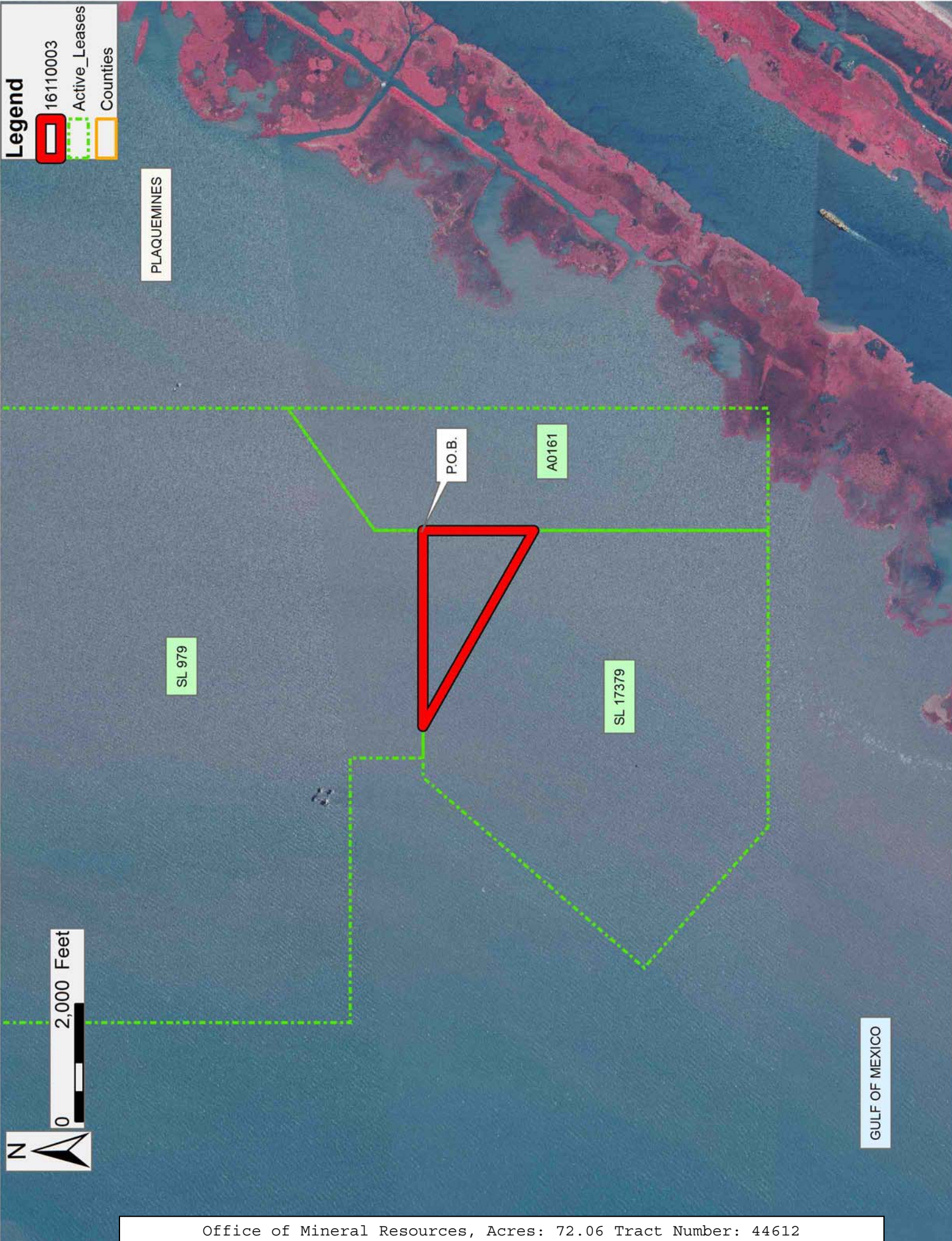
Applicant: CYPRESS ENERGY CORPORATION

Bidder	Cash Payment	Price/Acre	Rental	Oil	Gas	Other

**Legend**

- 161110003
- Active\_Leases
- Counties

PLAQUEMINES



GULF OF MEXICO