

TRACT 44606 - Portion of Block 25, South Pass Area, Plaquemines Parish, Louisiana

The beds and bottoms of all water bodies belonging to the State of Louisiana located in Block 25, South Pass Area, together with any present lands formed by accretion to the shoreline or islands formed therein, located in Plaquemines Parish, Louisiana, owned by and not presently under mineral lease as of November 9, 2016, from the State of Louisiana, the geographical area of which is more fully described as follows: Beginning at a point on the North boundary of State Lease No. 15016, as amended, having Coordinates of X = 2,644,534.23 and Y = 126,424.00; thence West 3,236.75 feet along the North boundary of said State Lease No. 15016 to its Northwest corner having Coordinates of X = 2,641,297.48 and Y = 126,424.00; thence West 2,754.50 feet to a point on the Louisiana Coastline, as decreed by the Supreme Court of the United States, as determined by a Special Master appointed therein, in litigation styled *United States v. State of Louisiana et al No. 9 Original*, in 1975, having Coordinates of X = 2,638,542.98 and Y = 126,424.00; thence along said Louisiana Coastline the following courses: Northeasterly on a straight line to a point having Coordinates of X = 2,638,945 and Y = 126,780, Easterly on a straight line to a point having Coordinates of X = 2,639,545 and Y = 126,825, Northeasterly on a straight line to a point having Coordinates of X = 2,641,835 and Y = 129,725, Northeasterly on a straight line to a point having Coordinates of X = 2,644,940 and Y = 134,910, and Northeasterly on a straight line to a point having Coordinates of X = 2,642,239.45 and Y = 134,984.77; thence South 04 degrees 42 minutes 34 seconds West 8,589.77 feet to the point of beginning, containing approximately **514 acres**, all as more particularly outlined on a plat on file in the Office of Mineral Resources, Department of Natural Resources. All bearings, distances and coordinates are based on Louisiana Coordinate System of 1927, (North or South Zone).

NOTE: The above description of the Tract nominated for the purpose of acquiring a mineral lease or a geophysical agreement has been provided and corrected, where required, exclusively by the nominating party. Any mineral lease or geophysical agreement selected from this Tract and awarded by the Louisiana State Mineral and Energy Board shall be without warranty of any kind, either express, implied or statutory including, but not limited to, title or the implied warranties of merchantability and fitness for a particular purpose.

An error or omission in the nominating party's Tract description may require that a State mineral lease or geophysical agreement be modified, canceled or abrogated due to the existence of conflicting leases, operating agreements, private claims or other future obligations or conditions within the Tract described. In such case, however, the Louisiana State Mineral and Energy Board shall not be obligated to refund any consideration paid by the Lessee prior to such modification, cancellation or abrogation including, but not limited to, bonuses, rentals and royalties.

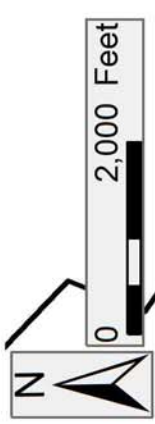
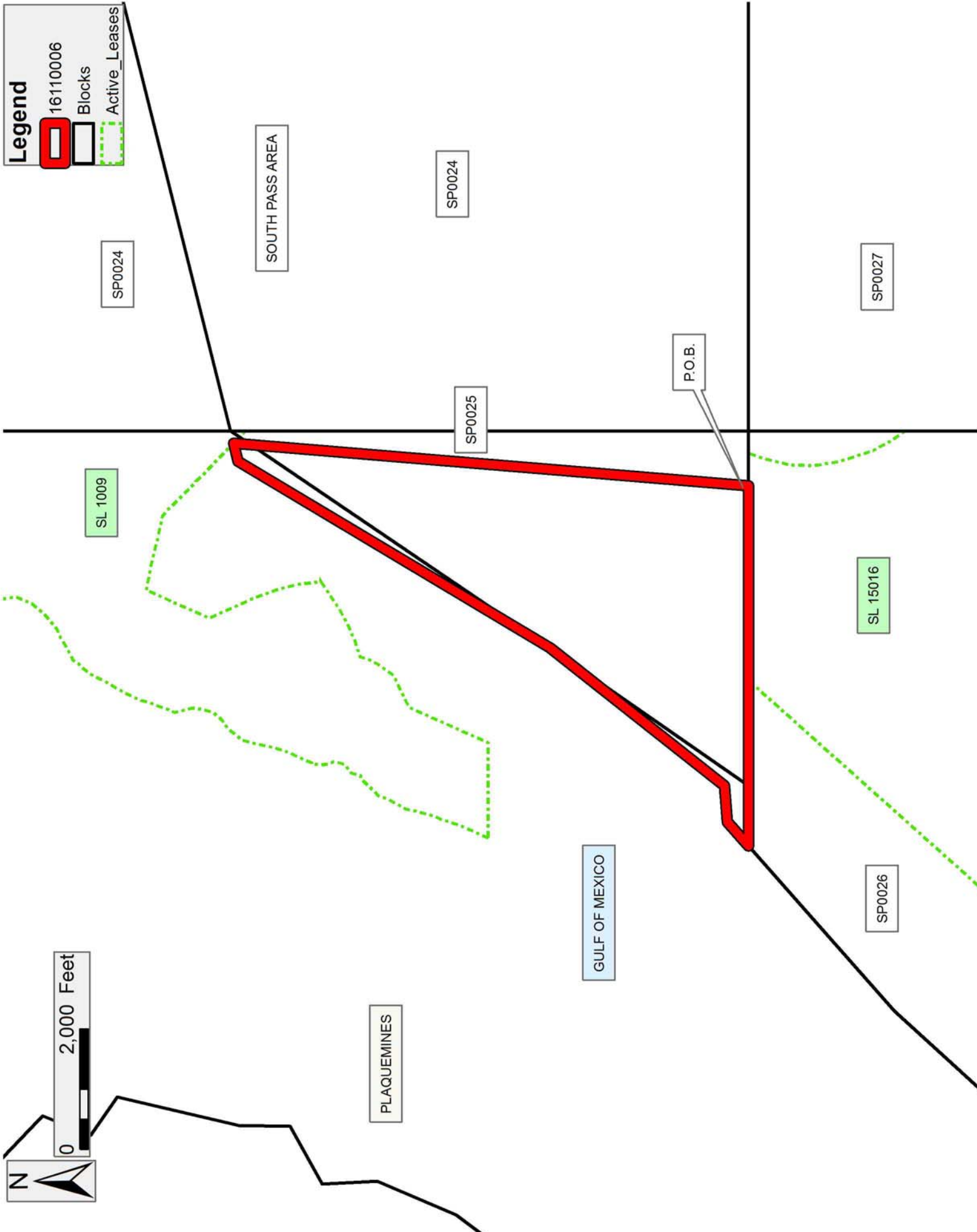
NOTE: The State of Louisiana does hereby reserve, and this lease shall be subject to, the imprescriptible right of surface use in the nature of a servitude in favor of the Department of Natural Resources, including its Offices and Commissions, for the sole purpose of implementing, constructing, servicing and maintaining approved coastal zone management and/or restoration projects. Utilization of any and all rights derived under this lease by the mineral lessee, its agents, successors or assigns, shall not interfere with nor hinder the reasonable surface use by the Department of Natural Resources, its Offices or Commissions, as herein above reserved.

Applicant: CYPRESS ENERGY CORPORATION

Bidder	Cash Payment	Price/Acre	Rental	Oil	Gas	Other

Legend

- 16110006
- Blocks
- Active_Leases



TRACT 44607 - Portion of Block 26, South Pass Area, Plaquemines Parish, Louisiana

The beds and bottoms of all water bodies belonging to the State of Louisiana located in Block 26, South Pass Area, together with any present lands formed by accretion to the shoreline or islands formed therein, located in Plaquemines Parish, Louisiana, owned by and not presently under mineral lease as of November 9, 2016, from the State of Louisiana, the geographical area of which is more fully described as follows: Beginning at a point on the South line of Block 26, South Pass Area having Coordinates of X = 2,635,249.10 and Y = 111,666.00; thence West approximately 6,482 feet on the South line of said Block 26 to a point on the boundary of State Lease No. 2227 having a Coordinate of Y = 111,666.00; thence Northeasterly along the boundary of said State Lease No. 2227 to a point on the boundary of State Lease No. 17203 as amended; thence along the boundary of said State Lease No. 17203 the following courses: South 68 degrees 52 minutes 17 seconds East approximately 1,047 feet to a point having Coordinates of X = 2,632,474.56 and Y = 115,882.00, North 21 degrees 07 minutes 43 seconds East 4,940.00 feet to a point having Coordinates of X = 2,634,255.26 and Y = 120,489.90, and North 68 degrees 52 minutes 17 seconds West approximately 776 feet to a point on the boundary of said State Lease No. 2227; thence Northeasterly along the boundary of said State Lease No. 2227 to a point of intersection with the Louisiana Coastline, as decreed by the Supreme Court of the United States, as determined by a Special Master appointed therein, in litigation styled *United States v. State of Louisiana et al No. 9 Original*, in 1975, thence along said Louisiana Coastline the following courses: Northeasterly on a straight line to a point having Coordinates of X = 2,635,800 and Y = 123,995, and Northeasterly on a straight line to a point on the North line of said Block 26 having Coordinates of X = 2,638,542.98 and Y = 126,424.00; thence East 2,754.50 feet on the North line of said Block 26 to the Northwest corner of State Lease No. 15016 having Coordinates of X = 2,641,297.48 and Y = 126,424.00; thence along the boundary of said State Lease No. 15016 the following courses: South 41 degrees 47 minutes 12 seconds West 9,716.90 feet and South 04 degrees 32 minutes 44 seconds East 5,382.58 feet to a its Southwest corner having Coordinates of X = 2,635,249.10 and Y = 113,813.13; thence South 2,147.13 feet to the point of beginning, **LESS AND EXCEPT** any portion State Lease No. 2227 that may lie within the above described tract, containing approximately **1,102 acres**, , all as more particularly outlined on a plat on file in the Office of Mineral Resources, Department of Natural Resources. All bearings, distances and coordinates are based on Louisiana Coordinate System of 1927, (North or South Zone).

NOTE: The above description of the Tract nominated for the purpose of acquiring a mineral lease or a geophysical agreement has been provided and corrected, where required, exclusively by the nominating party. Any mineral lease or geophysical agreement selected from this Tract and awarded by the Louisiana State Mineral and Energy Board shall be without warranty of any kind, either express, implied or statutory including, but

not limited to, title or the implied warranties of merchantability and fitness for a particular purpose.

An error or omission in the nominating party's Tract description may require that a State mineral lease or geophysical agreement be modified, canceled or abrogated due to the existence of conflicting leases, operating agreements, private claims or other future obligations or conditions within the Tract described. In such case, however, the Louisiana State Mineral and Energy Board shall not be obligated to refund any consideration paid by the Lessee prior to such modification, cancellation or abrogation including, but not limited to, bonuses, rentals and royalties.

NOTE: The State of Louisiana does hereby reserve, and this lease shall be subject to, the imprescriptible right of surface use in the nature of a servitude in favor of the Department of Natural Resources, including its Offices and Commissions, for the sole purpose of implementing, constructing, servicing and maintaining approved coastal zone management and/or restoration projects. Utilization of any and all rights derived under this lease by the mineral lessee, its agents, successors or assigns, shall not interfere with nor hinder the reasonable surface use by the Department of Natural Resources, its Offices or Commissions, as herein above reserved.

Applicant: CYPRESS ENERGY CORPORATION

Bidder	Cash Payment	Price/Acre	Rental	Oil	Gas	Other

Legend

- 16110004
- Blocks
- Active_Leases

