

TRACT 44427 - Catahoula and Concordia Parishes, Louisiana

All of the lands now or formerly constituting the beds and bottoms of all water bodies of every nature and description as to which title is vested in the State of Louisiana, together with all islands arising therein and other lands formed by accretion or by reliction, where allowed by law, excepting tax adjudicated lands, and not presently under mineral lease on November 12, 2015, situated in Catahoula and Concordia Parishes, Louisiana, and more particularly described as follows: Beginning at a point having Coordinates of X = 2,198,491.02 and Y = 285,987.22; thence South 89 degrees 40 minutes 12 seconds East 3,970.47 feet to a point having Coordinates of X = 2,202,461.43 and Y = 285,964.34; thence South 00 degrees 19 minutes 42 seconds West 3,980.03 feet to a point having Coordinates of X = 2,202,438.61 and Y = 281,984.37; thence West 3,965.46 feet to a point having Coordinates of X = 2,198,473.15 and Y = 281,984.37; thence North 00 degrees 15 minutes 21 seconds East 4,002.88 feet to the point of beginning, containing approximately **52 acres**, all as more particularly outlined on a plat on file in the Office of Mineral Resources, Department of Natural Resources. All bearings, distances and coordinates are based on Louisiana Coordinate System of 1927, (North or South Zone), where applicable.

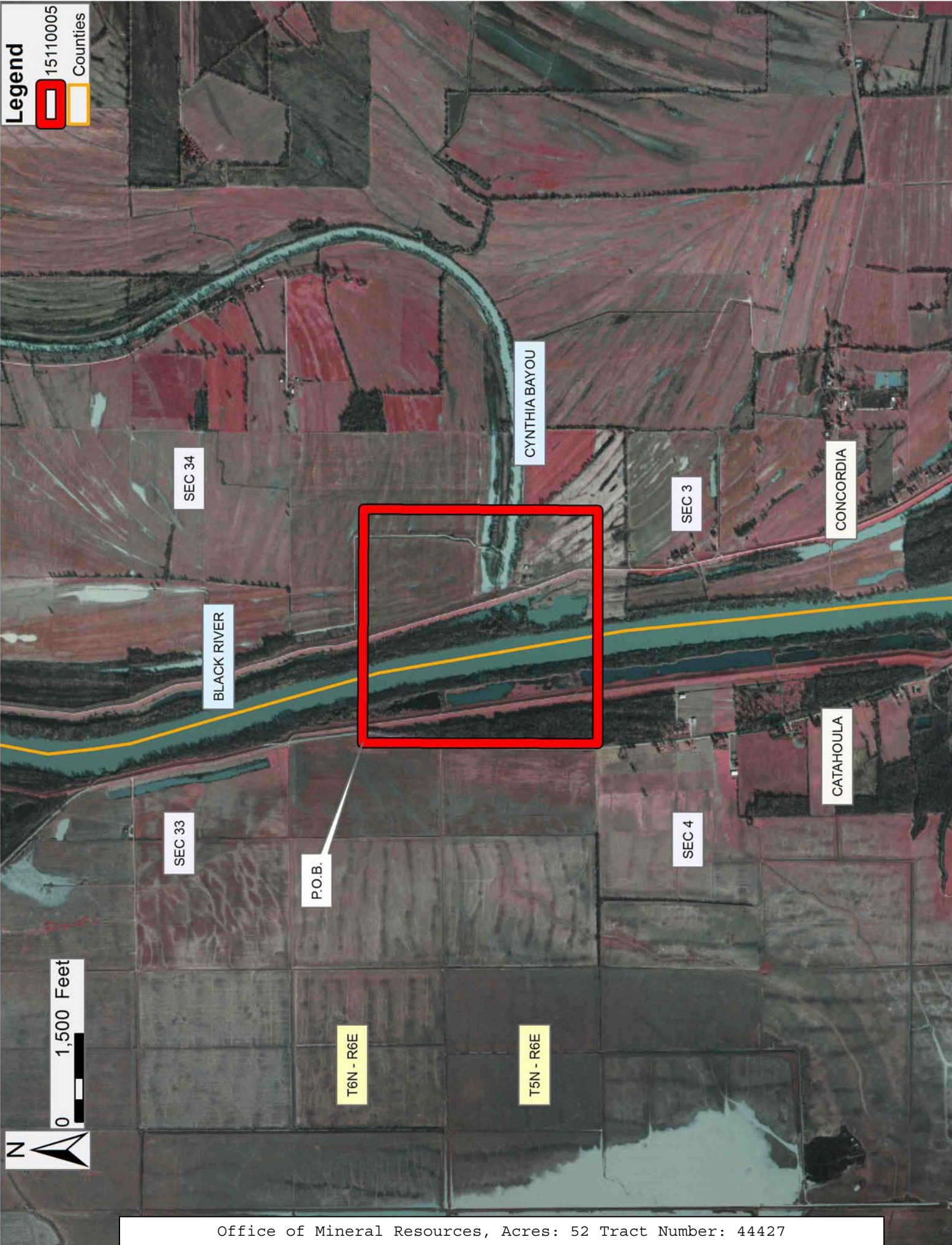
NOTE: The above description of the Tract nominated for the purpose of acquiring a mineral lease or a geophysical agreement has been provided and corrected, where required, exclusively by the nominating party. Any mineral lease or geophysical agreement selected from this Tract and awarded by the Louisiana State Mineral and Energy Board shall be without warranty of any kind, either express, implied or statutory including, but not limited to, title or the implied warranties of merchantability and fitness for a particular purpose.

An error or omission in the nominating party's Tract description may require that a State mineral lease or geophysical agreement be modified, canceled or abrogated due to the existence of conflicting leases, operating agreements, private claims or other future obligations or conditions within the Tract described. In such case, however, the Louisiana State Mineral and Energy Board shall not be obligated to refund any consideration paid by the Lessee prior to such modification, cancellation or abrogation including, but not limited to, bonuses, rentals and royalties.

Bidder	Cash Payment	Price/Acre	Rental	Oil	Gas	Other

Applicant: CYPRESS ENERGY CORPORATION

Legend
15110005
Counties



TRACT 44428 - Calcasieu Parish, Louisiana

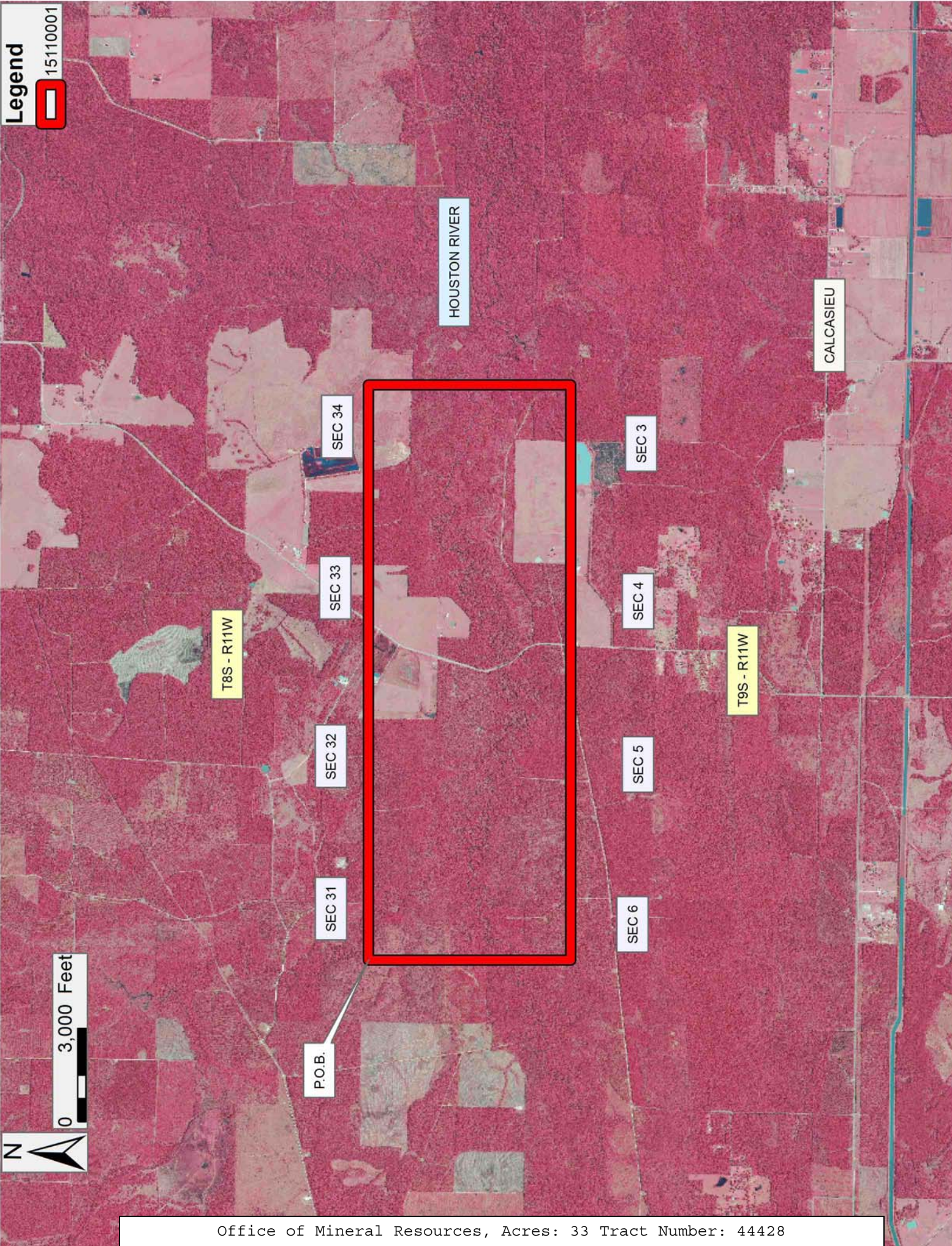
All of the lands now or formerly constituting the beds and bottoms of all water bodies of every nature and description as to which title is vested in the State of Louisiana, together with all islands arising therein and other lands formed by accretion or by reliction, where allowed by law, excepting tax adjudicated lands, and not presently under mineral lease on November 12, 2015, situated in Calcasieu Parish, Louisiana, and more particularly described as follows: Beginning at a point having Coordinates of X = 1,306,580.00 and Y = 609,650.00; thence East 18,480.00 feet to a point having Coordinates of X = 1,325,060.00 and Y = 609,650.00; thence South 6,500.00 feet to a point having Coordinates of X = 1,325,060.00 and Y = 603,150.00; thence West 18,480.00 feet to a point having Coordinates of X = 1,306,580.00 and Y = 603,150.00; thence North 6,500.00 feet to the Point of Beginning containing approximately **33.00 acres**, all as more particularly outlined on a plat on file in the Office of Mineral Resources, Department of Natural Resources. All bearings, distances and coordinates are based on Louisiana Coordinate System of 1927, (North or South Zone), where applicable.

NOTE: The above description of the Tract nominated for the purpose of acquiring a mineral lease or a geophysical agreement has been provided and corrected, where required, exclusively by the nominating party. Any mineral lease or geophysical agreement selected from this Tract and awarded by the Louisiana State Mineral and Energy Board shall be without warranty of any kind, either express, implied or statutory including, but not limited to, title or the implied warranties of merchantability and fitness for a particular purpose.

An error or omission in the nominating party's Tract description may require that a State mineral lease or geophysical agreement be modified, canceled or abrogated due to the existence of conflicting leases, operating agreements, private claims or other future obligations or conditions within the Tract described. In such case, however, the Louisiana State Mineral and Energy Board shall not be obligated to refund any consideration paid by the Lessee prior to such modification, cancellation or abrogation including, but not limited to, bonuses, rentals and royalties.

Bidder	Cash Payment	Price/Acre	Rental	Oil	Gas	Other

Applicant: GULF COAST ENERGY GROUP, LLC



Legend

15110001

HOUSTON RIVER

CALCASIEU

SEC 34

SEC 3

T8S - R11W

SEC 33

SEC 4

T9S - R11W

SEC 32

SEC 5

SEC 31

SEC 6

P.O.B.

0 3,000 Feet



TRACT 44429 - Portion of Blocks 54, 55, 82, and 83, West Delta Area, Plaquemines Parish, Louisiana

All of the lands now or formerly constituting the beds and bottoms of all water bodies of every nature and description as to which title is vested in the State of Louisiana, together with all islands arising therein and other lands formed by accretion or by reliction, where allowed by law, excepting tax adjudicated lands, and not presently under mineral lease on November 12, 2015, situated in Plaquemines Parish, Louisiana, and more particularly described as follows: Beginning at a point located on the Southwestern boundary of State Lease No. 979, as amended, having Coordinates of X = 2,615,927.93 and Y = 130,940.00; thence along said State Lease No. 979 the following courses and distances: East 4,499.97 feet, South 00 degrees 00 minutes 05 seconds West 1,240.00 feet to a point on the Northern boundary of State Lease No. 17379, as amended, having Coordinates of X = 2,620,427.93 and Y = 129,700.00; thence along said State Lease No. 17379, as amended, the following courses and distances: West 327.83 feet to a point having Coordinates X = 2,620,100.10 and Y = 129,700.00, and South 40 degrees 43 minutes 06 seconds West 4,965.50 feet to a point having Coordinates X = 2,616,860.90 and Y = 125,936.52, and South 48 degrees 44 minutes 04 seconds East 3,187.51 feet to its Southwest corner located on the line common to Blocks 54 and 83, having Coordinates of X = 2,619,256.83 and Y = 123,834.20, said point also being the Northwest corner of State Lease No. 17380, as amended; thence along the boundary of said State Lease No. 17380 the following courses and distances: South 48 degrees 44 minutes 04 seconds East 3,684.34 feet to a point having Coordinates of X = 2,622,026.21 and Y = 121,404.19 and North 43 degrees 05 minutes 57 seconds East 3,327.99 feet to its Northeast corner also being the Southwest corner of Operating Agreement 0161 located on the North line of said Block 83 having Coordinates of X = 2,624,300.10 and Y = 123,834.20; thence South 89 degrees 59 minutes 53 seconds East approximately 690 feet along the North line of said Block 83 to its point of intersection with the West boundary or a projection thereof of State Lease No. 2593, as amended; thence Southerly and Southeasterly along the said West boundary or a projection thereof of said State Lease No. 2593 to its point of intersection with the Northerly boundary of State Lease No. 2227; thence Westerly along the Northern boundary of said State Lease No. 2227 to its Northwest corner, also being the Northeast corner of State Lease No. 2565; thence Westerly and Southwesterly along the Northern and Western boundaries of said State Lease No. 2565 to a point of intersection with the Louisiana Coastline, as decreed by the Supreme Court of the United States, as determined by a Special Master appointed therein, in litigation styled *United States v. State of Louisiana et al No. 9 Original*, in 1975, having a Coordinate of X = 2,615,474.19; thence North 00 degrees 02 minutes 08 seconds West 8,622.00 feet along said Coastline to a point of intersection with the line common to Blocks 82 and 55, having Coordinates of X = 2,615,468.86 and Y = 123,834.20; thence North 00 degrees 00 minutes 06 seconds East 803.97 feet along said Coastline to a point on the Southeast corner of State Lease No. 21095 having Coordinates X = 2,615,468.88 and Y = 124,638.18; thence North 00 degrees 01 minutes 58

seconds West 5,933.17 feet along said Coastline and the East line of said State Lease No. 21095 to its Northeast corner having Coordinates X = 2,615,465.50 and Y = 130,571.35; thence North 00 degrees 01 minute 58 seconds West 368.65 feet along said Coastline to a point having Coordinates X = 2,615,465.29 and Y = 130,940.00; thence East 462.64 feet to the point of beginning, **LESS AND EXCEPT**, any portion of Operating Agreement 0161, State Lease No. 2227, State Lease No. 2565, and State Lease No. 2593 that may lie within the above described tract, **AND LESS AND EXCEPT**, any portion of United States Department of the Interior Lease of Oil and Gas No. LABLM 0013997 and LABLM 0016334 and that certain Oil, Gas and Mineral Lease, dated July 13, 1954, by and between, Mark Delesdernier, et ux and The California Company and that certain Oil, Gas and Mineral Lease, dated September 1, 1954, by and between, Delta Development Company, Inc. and The California Company, containing approximately **1,155 acres**, all as more particularly outlined on a plat on file in the Office of Mineral Resources, Department of Natural Resources. All bearings, distances and coordinates are based on Louisiana Coordinate System of 1927, (North or South Zone), where applicable.

NOTE: The above description of the Tract nominated for the purpose of acquiring a mineral lease or a geophysical agreement has been provided and corrected, where required, exclusively by the nominating party. Any mineral lease or geophysical agreement selected from this Tract and awarded by the Louisiana State Mineral and Energy Board shall be without warranty of any kind, either express, implied or statutory including, but not limited to, title or the implied warranties of merchantability and fitness for a particular purpose.

An error or omission in the nominating party's Tract description may require that a State mineral lease or geophysical agreement be modified, canceled or abrogated due to the existence of conflicting leases, operating agreements, private claims or other future obligations or conditions within the Tract described. In such case, however, the Louisiana State Mineral and Energy Board shall not be obligated to refund any consideration paid by the Lessee prior to such modification, cancellation or abrogation including, but not limited to, bonuses, rentals and royalties.

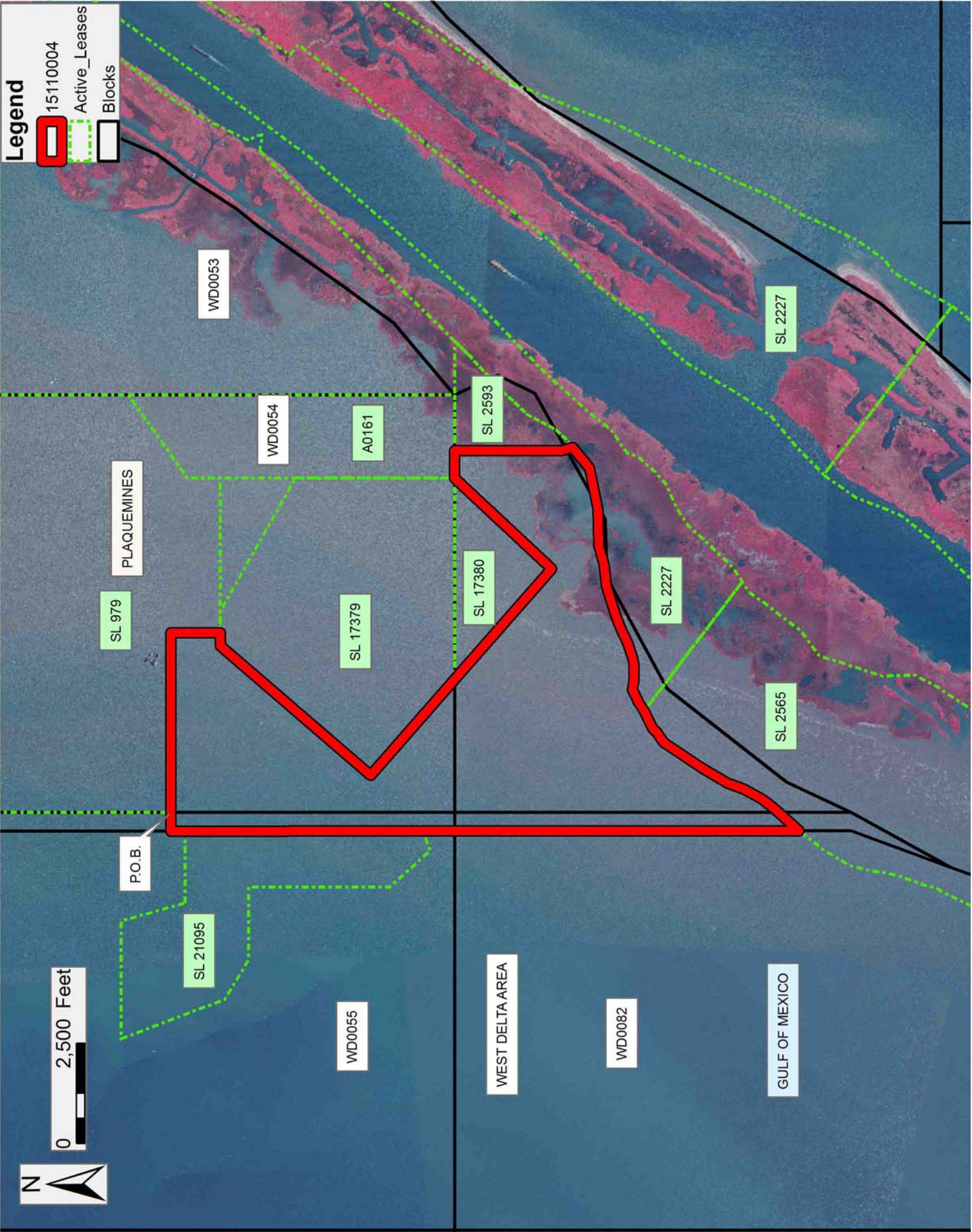
NOTE: The State of Louisiana does hereby reserve, and this lease shall be subject to, the imprescriptible right of surface use in the nature of a servitude in favor of the Department of Natural Resources, including its Offices and Commissions, for the sole purpose of implementing, constructing, servicing and maintaining approved coastal zone management and/or restoration projects. Utilization of any and all rights derived under this lease by the mineral lessee, its agents, successors or assigns, shall not interfere with nor hinder the reasonable surface use by the Department of Natural Resources, its Offices or Commissions, as herein above reserved.

Applicant: DELTA LANDS EXPLORATION, INC.

Bidder	Cash Payment	Price/Acre	Rental	Oil	Gas	Other

Legend

- 15110004
- Active_Leases
- Blocks



TRACT 44430 - Portion of Block 54, West Delta Area, Plaquemines Parish, Louisiana

All of the lands now or formerly constituting the beds and bottoms of all water bodies of every nature and description as to which title is vested in the State of Louisiana, together with all islands arising therein and other lands formed by accretion or by reliction, where allowed by law, excepting tax adjudicated lands, and not presently under mineral lease on November 12, 2015, situated in Plaquemines Parish, Louisiana, and more particularly described as follows: Beginning at a point on the Southeast corner of State Lease No. 979, as amended, also being a point on the West line of Operating Agreement A0161 having Coordinates of X = 2,624,300.10 and Y = 129,700.00; thence South 1,881.48 feet along the West Line of Operating Agreement A0161 to the Northeast corner of State Lease No. 17379 having Coordinates of X = 2,624,300.10 and Y = 127,818.52; thence North 60 degrees 34 minutes 53 seconds West 3,830.48 feet along the Northern boundary of said State Lease No. 17379 also being a point on the Southern boundary of said State Lease No. 979 having Coordinates of X = 2,620,963.54 and Y = 129,700.00; thence East 3,336.56 feet along the Southern boundary of said State Lease No. 979 to the point of beginning, **LESS AND EXCEPT** any portion of Operating Agreement A0160, as amended, that may lie within the above described tract, containing approximately **72.21 acres**, all as more particularly outlined on a plat on file in the Office of Mineral Resources, Department of Natural Resources. All bearings, distances and coordinates are based on Louisiana Coordinate System of 1927, (North or South Zone), where applicable.

NOTE: The above description of the Tract nominated for the purpose of acquiring a mineral lease or a geophysical agreement has been provided and corrected, where required, exclusively by the nominating party. Any mineral lease or geophysical agreement selected from this Tract and awarded by the Louisiana State Mineral and Energy Board shall be without warranty of any kind, either express, implied or statutory including, but not limited to, title or the implied warranties of merchantability and fitness for a particular purpose.

An error or omission in the nominating party's Tract description may require that a State mineral lease or geophysical agreement be modified, canceled or abrogated due to the existence of conflicting leases, operating agreements, private claims or other future obligations or conditions within the Tract described. In such case, however, the Louisiana State Mineral and Energy Board shall not be obligated to refund any consideration paid by the Lessee prior to such modification, cancellation or abrogation including, but not limited to, bonuses, rentals and royalties.

NOTE: The State of Louisiana does hereby reserve, and this lease shall be subject to, the imprescriptible right of surface use in the nature of a servitude in favor of the Department of Natural Resources, including its Offices and Commissions, for the sole purpose of implementing,

constructing, servicing and maintaining approved coastal zone management and/or restoration projects. Utilization of any and all rights derived under this lease by the mineral lessee, its agents, successors or assigns, shall not interfere with nor hinder the reasonable surface use by the Department of Natural Resources, its Offices or Commissions, as herein above reserved.

Applicant: DELTA LANDS EXPLORATION, INC.

Bidder	Cash Payment	Price/Acre	Rental	Oil	Gas	Other

Legend

- 151110003
- Active_Leases
- Blocks

