

TRACT 44421 - Portion of Blocks 119, and 120, South Timbalier Area, Revised, Terrebonne Parish, Louisiana

The beds and bottoms of all water bodies belonging to the State of Louisiana located in Blocks 119, and 120, South Timbalier Area, Revised, together with any present lands formed by accretion to the shoreline or islands formed therein, located in Terrebonne Parish, Louisiana, owned by and not presently under mineral lease as of November 12, 2015, from the State of Louisiana, the geographical area of which is more fully described as follows: Beginning at the Northwest corner of State Lease No. 21239 having Coordinates of X = 2,223,543.00 and Y = 146,025.00; thence North 13 degrees 23 minutes 31 seconds East 887.30 feet to a point on the Louisiana Coastline, as decreed by the Supreme Court of the United States, as determined by a Special Master appointed therein, in litigation styled United States vs. State of Louisiana et al No. 9 Original, in 1975, having Coordinates of X = 2,223,748.51 and Y = 146,888.18; thence Northeasterly 9,020.07 feet on a straight line along said Louisiana Coastline to a point having Coordinates of X = 2,232,511.37 and Y = 149,026.85; thence South 00 degrees 50 minutes 33 seconds East 6,027.50 feet to a point having Coordinates of X = 2,232,600.00 and Y = 143,000.00; thence North 83 degrees 27 minutes 48 seconds West 4,251.64 feet to the Northeast corner of State Lease No. 21238 having Coordinates of X = 2,228,376.00 and Y = 43,484.00; thence North 62 degrees 15 minutes 59 seconds West 1,807.46 feet along the Northern line of said State Lease No. 21238 to its Northwest corner, said corner also being the Northeast corner of said State Lease No. 21239, having Coordinates of X = 2,226,776.18 and Y = 144,325.12; thence North 62 degrees 15 minutes 59 seconds West 3,652.81 feet along the North line of said State Lease No. 21239 to the Point of Beginning, containing approximately **801.60 acres**, all as more particularly outlined on a plat on file in the Office of Mineral Resources, Department of Natural Resources. All bearings, distances and coordinates are based on Louisiana Coordinate System of 1927, (North or South Zone).

NOTE: The above description of the Tract nominated for the purpose of acquiring a mineral lease or a geophysical agreement has been provided and corrected, where required, exclusively by the nominating party. Any mineral lease or geophysical agreement selected from this Tract and awarded by the Louisiana State Mineral and Energy Board shall be without warranty of any kind, either express, implied or statutory including, but not limited to, title or the implied warranties of merchantability and fitness for a particular purpose.

An error or omission in the nominating party's Tract description may require that a State mineral lease or geophysical agreement be modified, canceled or abrogated due to the existence of conflicting leases, operating agreements, private claims or other future obligations or conditions within the Tract described. In such case, however, the Louisiana State Mineral and Energy Board shall not be obligated to refund any consideration paid by the Lessee prior to such modification,

cancellation or abrogation including, but not limited to, bonuses, rentals and royalties.

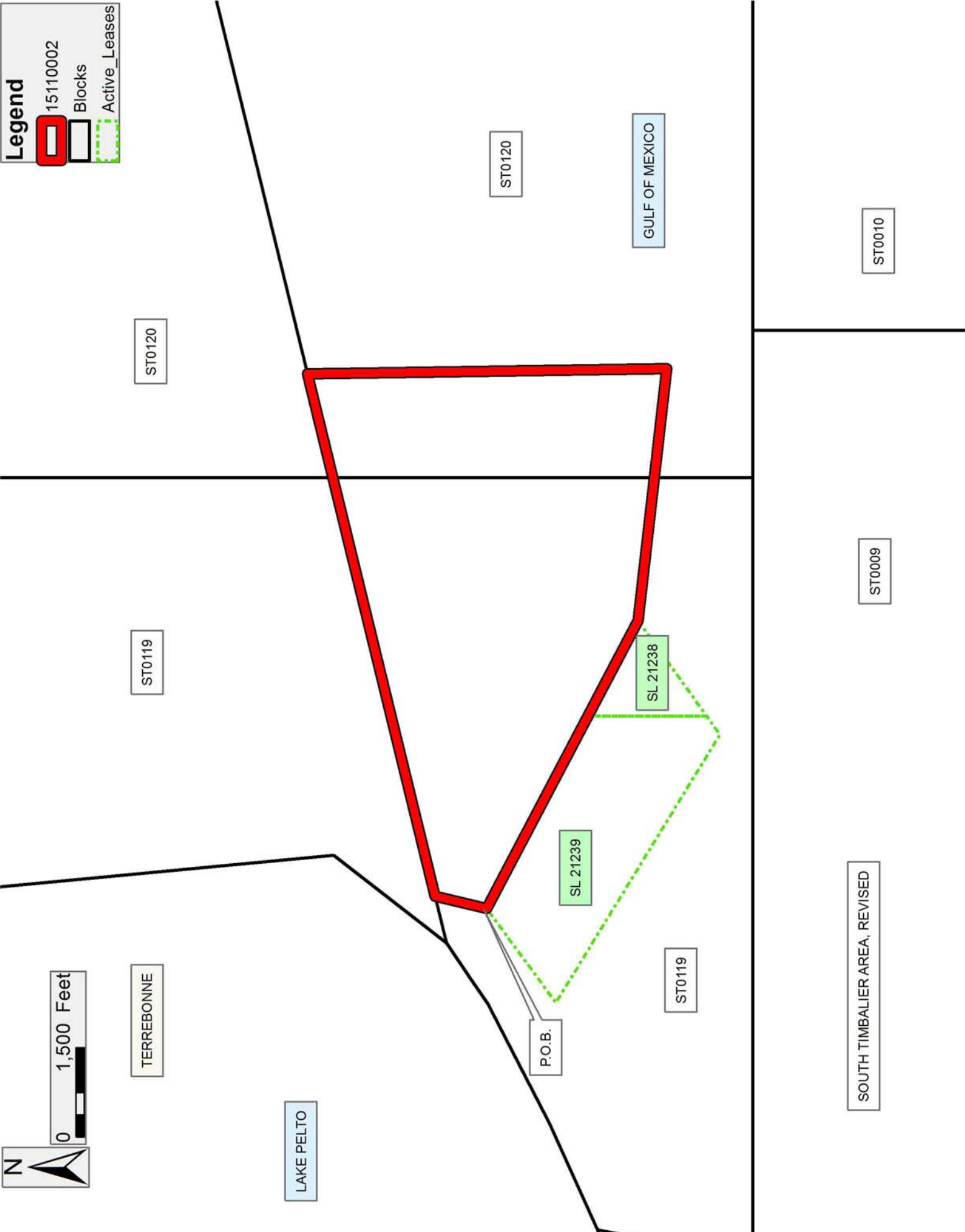
NOTE: The State of Louisiana does hereby reserve, and this lease shall be subject to, the imprescriptible right of surface use in the nature of a servitude in favor of the Department of Natural Resources, including its Offices and Commissions, for the sole purpose of implementing, constructing, servicing and maintaining approved coastal zone management and/or restoration projects. Utilization of any and all rights derived under this lease by the mineral lessee, its agents, successors or assigns, shall not interfere with nor hinder the reasonable surface use by the Department of Natural Resources, its Offices or Commissions, as herein above reserved.

Applicant: MOOSE ENERGY GROUP

Bidder	Cash Payment	Price/Acre	Rental	Oil	Gas	Other

Legend

- 15110002
- Blocks
- Active_Leases



TRACT 44422 - Portion of Blocks 46, and 65, Ship Shoal Area, Terrebonne Parish, Louisiana

The beds and bottoms of all water bodies belonging to the State of Louisiana located in Blocks 46, and 65, Ship Shoal Area, together with any present lands formed by accretion to the shoreline or islands formed therein, located in Terrebonne Parish, Louisiana, owned by and not presently under mineral lease as of November 12, 2015, from the State of Louisiana, the geographical area of which is more fully described as follows: Beginning at a point within Block 46, Ship Shoal Area, also being on the South boundary of State Lease No. 14311 having Coordinates of X = 2,146,868.40 and Y = 133,078.89; thence along the boundaries of said State Lease No. 14311 the following courses: South 66 degrees 41 minutes 52 seconds East 1,994.27 feet to a point having Coordinates of X = 2,148,700.00 and Y = 132,290.00 and South 80 degrees 59 minutes 07 seconds East 3,829.30 feet to its Southeast corner and the Southwest corner of State Lease No. 14157 having Coordinates of X = 2,152,482.00 and Y = 131,689.99; thence South 56 degrees 54 minutes 25 seconds East 4,199.16 feet along the South boundary of said State Lease No. 14157 to its Southeast corner having Coordinates of X = 2,156,000.00 and Y = 129,397.27; thence South 5,605.28 feet to the Northeast corner of State Lease No. 14571 having Coordinates of X = 2,156,000.00 and Y = 123,791.99; thence along the boundaries of said State Lease No. 14571 the following courses: West 4,600.00 feet to a point having Coordinates of X = 2,151,400.00 and Y = 123,791.99, South 2,805.78 feet to a point having Coordinates of X = 2,151,400.00 and Y = 120,986.21 and South 51 degrees 55 minutes 06 seconds East 5,843.99 feet to its Southernmost point and a point on the Three Mile Line, as decreed by the Supreme Court of the United States, as determined by a Special Master appointed therein, in litigation styled *United States v. State of Louisiana et al No. 9 Original*, in 1975, having Coordinates of X = 2,156,000.00 and Y = 117,381.73; thence along said Three Mile Line the following: Northwesterly along an arc to the right having a radius of 18,240.60 feet and a center of X = 2,157,920 and Y = 135,521 to a point having Coordinates of X = 2,154,346 and Y = 117,634, Northwesterly along an arc to the right having a radius of 18,240.60 feet and a center of X = 2,155,349 and Y = 135,847 to a point having Coordinates of X = 2,149,793 and Y = 118,473, Southwesterly along an arc to the right having a radius of 18,240.60 feet and a center of X = 2,147,751 and Y = 136,599 to a point having Coordinates of X = 2,149,162 and Y = 118,413 and Southwesterly along a straight line to a point having Coordinates of X = 2,146,868.40 and Y = 118,235.00; thence North 14,843.89 feet to the point of beginning, containing approximately **2,359.13 acres, LESS AND EXCEPT** that portion thereof, if any, lying seaward of the line three nautical miles from the coast line of Louisiana, as said three mile line has been decreed by the Supreme Court of the United States, as determined by a Special Master appointed therein, in litigation styled **United States v. State of Louisiana et al No. 9 Original**, in 1975, all as more particularly outlined on a plat in the Office of Mineral Resources, Department of Natural

Resources. All bearings, distances and coordinates are based on the Louisiana Coordinate System of 1927, (South Zone).

NOTE: The above description of the Tract nominated for the purpose of acquiring a mineral lease or a geophysical agreement has been provided and corrected, where required, exclusively by the nominating party. Any mineral lease or geophysical agreement selected from this Tract and awarded by the Louisiana State Mineral and Energy Board shall be without warranty of any kind, either express, implied or statutory including, but not limited to, title or the implied warranties of merchantability and fitness for a particular purpose.

An error or omission in the nominating party's Tract description may require that a State mineral lease or geophysical agreement be modified, canceled or abrogated due to the existence of conflicting leases, operating agreements, private claims or other future obligations or conditions within the Tract described. In such case, however, the Louisiana State Mineral and Energy Board shall not be obligated to refund any consideration paid by the Lessee prior to such modification, cancellation or abrogation including, but not limited to, bonuses, rentals and royalties.

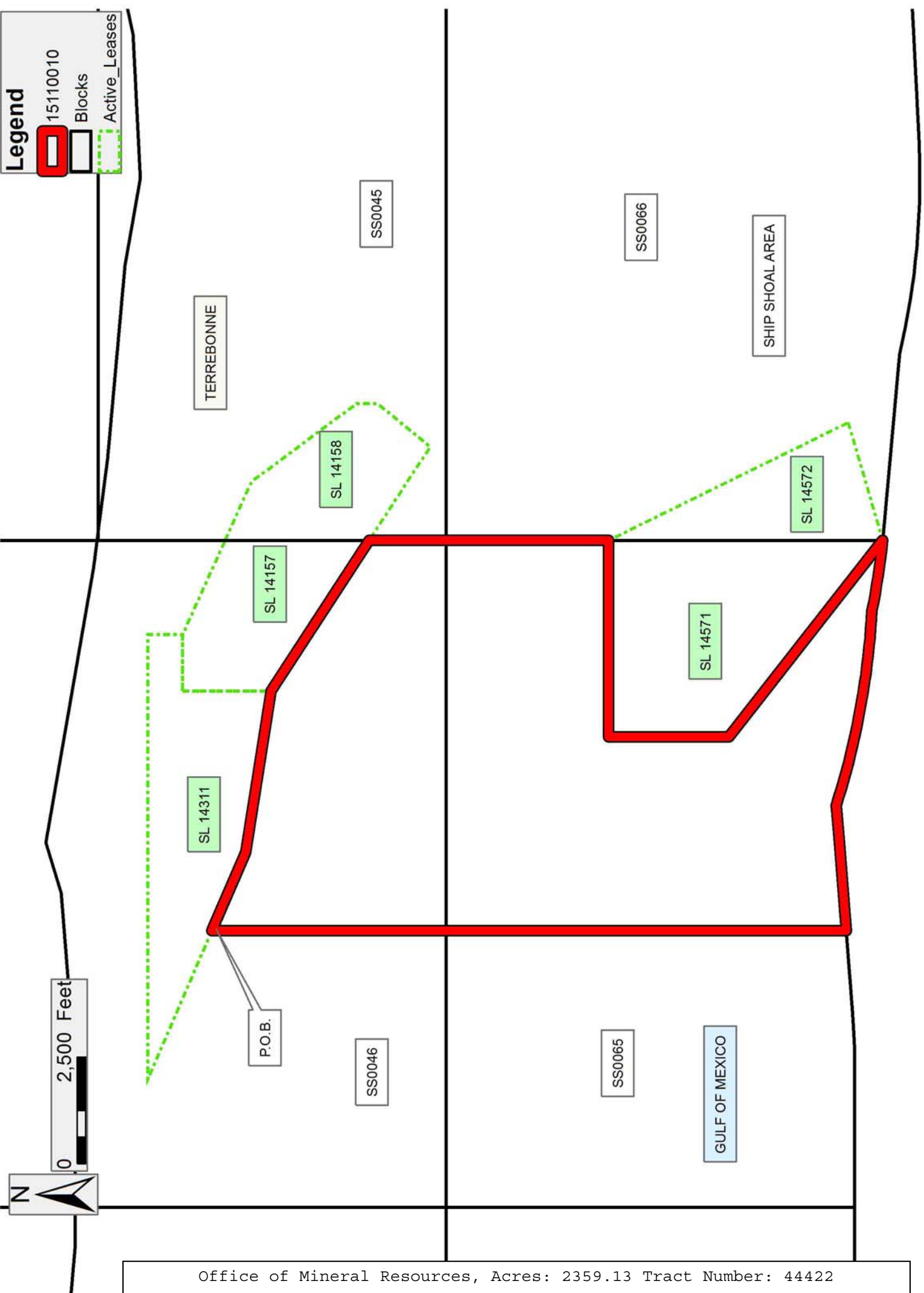
NOTE: The State of Louisiana does hereby reserve, and this lease shall be subject to, the imprescriptible right of surface use in the nature of a servitude in favor of the Department of Natural Resources, including its Offices and Commissions, for the sole purpose of implementing, constructing, servicing and maintaining approved coastal zone management and/or restoration projects. Utilization of any and all rights derived under this lease by the mineral lessee, its agents, successors or assigns, shall not interfere with nor hinder the reasonable surface use by the Department of Natural Resources, its Offices or Commissions, as herein above reserved.

Applicant: CYPRESS ENERGY CORPORATION

Bidder	Cash Payment	Price/Acre	Rental	Oil	Gas	Other

Legend

- 15110010
- Blocks
- Active_Leases



TRACT 44423 - Portion of Blocks 45, and 66, Ship Shoal Area, Terrebonne Parish, Louisiana

The beds and bottoms of all water bodies belonging to the State of Louisiana located in Blocks 45, and 66, Ship Shoal Area, together with any present lands formed by accretion to the shoreline or islands formed therein, located in Terrebonne Parish, Louisiana, owned by and not presently under mineral lease as of November 12, 2015, from the State of Louisiana, the geographical area of which is more fully described as follows: Beginning at a point on the West line of Block 45, Ship Shoal area, also being the Southwest corner of State Lease No. 14158 as amended having Coordinates of X = 2,156,000.00 and Y = 129,397.27; thence along the boundaries of said State Lease No. 14158 the following courses: South 56 degrees 54 minutes 25 seconds East 2,614.02 feet to a point having Coordinates of X = 2,158,190.00 and Y = 127,969.98, North 39 degrees 23 minutes 27 seconds East 1,591.54 feet to a point having Coordinates of X = 2,159,200.00 and Y = 129,199.98, North 490.00 feet to a point having Coordinates of X = 2,159,200.00 and Y = 129,689.98 and North 36 degrees 34 minutes 14 seconds West 1,929.96 feet to a point on its east boundary having Coordinates of X = 2,158,050.10 and Y = 131,240.00; thence East 13,549.89 feet to a point having Coordinates of X = 2,171,600.00 and Y = 131,240.00; thence South 7,448.01 feet to a point having Coordinates of X = 2,171,600.00 and Y = 123,791.99; thence West 15,599.99 feet to the northern point of State Lease 14572 having Coordinates of X = 2,156,000.00 and Y = 123,791.99; thence North 5,605.28 feet to the point of beginning, containing approximately **2,497.71 acres**, all as more particularly outlined on a plat on file in the Office of Mineral Resources, Department of Natural Resources. All bearings, distances and coordinates are based on Louisiana Coordinate System of 1927, (North or South Zone).

NOTE: The above description of the Tract nominated for the purpose of acquiring a mineral lease or a geophysical agreement has been provided and corrected, where required, exclusively by the nominating party. Any mineral lease or geophysical agreement selected from this Tract and awarded by the Louisiana State Mineral and Energy Board shall be without warranty of any kind, either express, implied or statutory including, but not limited to, title or the implied warranties of merchantability and fitness for a particular purpose.




An error or omission in the nominating party's Tract description may require that a State mineral lease or geophysical agreement be modified, canceled or abrogated due to the existence of conflicting leases, operating agreements, private claims or other future obligations or conditions within the Tract described. In such case, however, the Louisiana State Mineral and Energy Board shall not be obligated to refund any consideration paid by the Lessee prior to such modification, cancellation or abrogation including, but not limited to, bonuses, rentals and royalties.

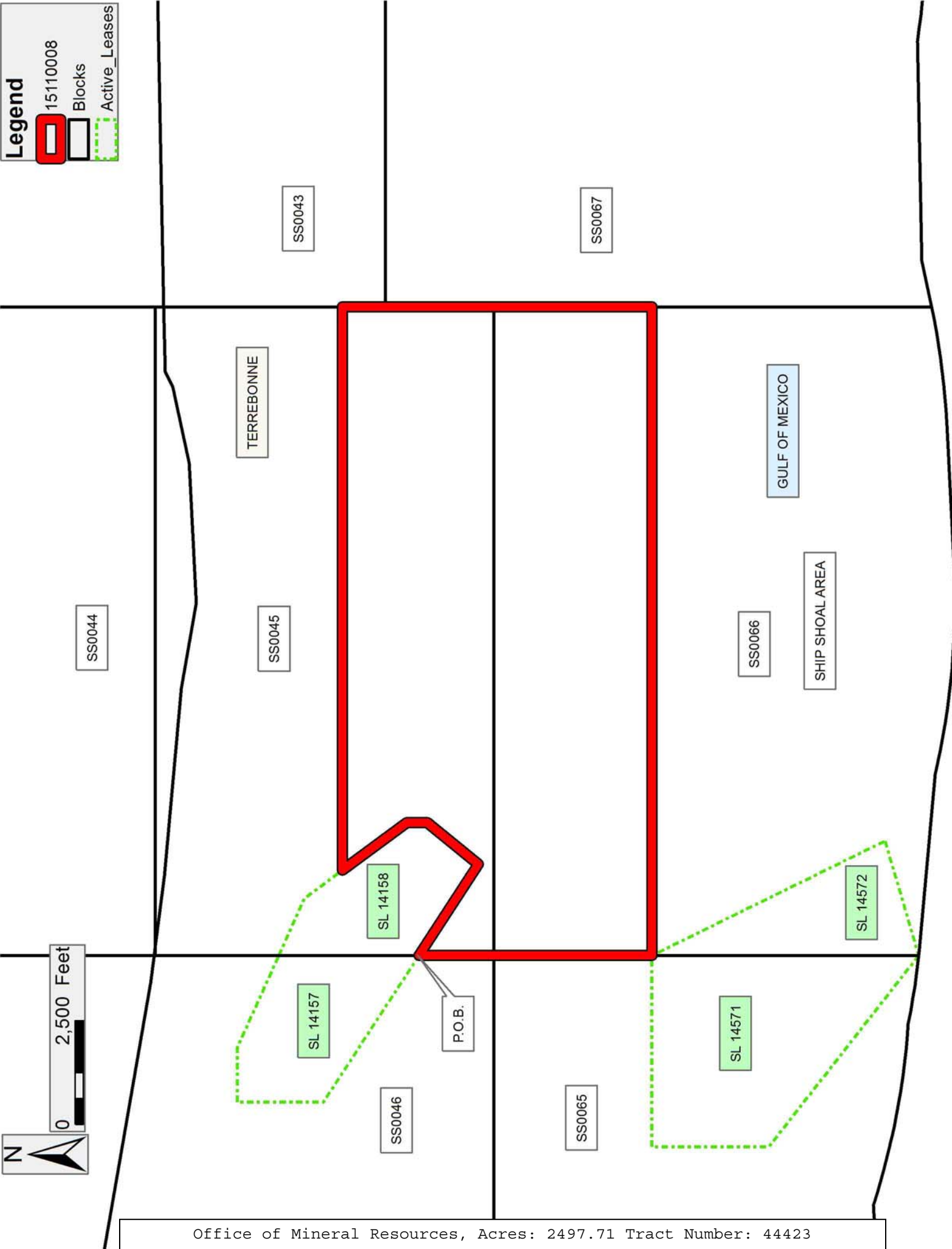
NOTE: The State of Louisiana does hereby reserve, and this lease shall be subject to, the imprescriptible right of surface use in the nature of a servitude in favor of the Department of Natural Resources, including its Offices and Commissions, for the sole purpose of implementing, constructing, servicing and maintaining approved coastal zone management and/or restoration projects. Utilization of any and all rights derived under this lease by the mineral lessee, its agents, successors or assigns, shall not interfere with nor hinder the reasonable surface use by the Department of Natural Resources, its Offices or Commissions, as herein above reserved.

Applicant: CYPRESS ENERGY CORPORATION

Bidder	Cash Payment	Price/Acre	Rental	Oil	Gas	Other

Legend

-  15110008
-  Blocks
-  Active_Leases



TRACT 44424 - Portion of Block 67, Ship Shoal Area, Terrebonne Parish, Louisiana

The beds and bottoms of all water bodies belonging to the State of Louisiana located in Block 67, Ship Shoal Area, together with any present lands formed by accretion to the shoreline or islands formed therein, located in Terrebonne Parish, Louisiana, owned by and not presently under mineral lease as of November 12, 2015, from the State of Louisiana, the geographical area of which is more fully described as follows: Beginning at a point being the Northwest corner of Block 67, Ship Shoal area, having Coordinates of X = 2,171,600.00 and Y = 130,197.44; thence East 8,550.00 feet to the Southwest corner of State Lease No. 16558 as amended having Coordinates of X = 2,180,150.00 and Y = 130,197.44; thence East 2,017.42 feet along the south boundary of said State Lease No. 16558 to its Southeast corner having Coordinates of X = 2,182,167.42 and Y = 130,197.44; thence continue North 89 degrees 59 minutes 59 seconds East 4,286.99 feet to a point having Coordinates of X = 2,186,454.41 and Y = 130,197.45; thence South 00 degrees 17 minutes 29 seconds East 4,000.00 feet to the Northeast corner of Operating Agreement No. 0285 having Coordinates of X = 2,186,474.73 and Y = 126,197.50; thence along the boundaries of said Operating Agreement No. 0285 the following courses: West 1,700 feet to a point having Coordinates of X = 2,184,774.73 and Y = 126,197.50 and South 00 degrees 17 minutes 30 seconds East 2,561.08 feet to a point on its west boundary having Coordinates of X = 2,184,787.77 and Y = 123,636.45; thence West 4,787.50 feet to a point on the east boundary of State Lease No. 17309 having Coordinates of X = 2,180,000.27 and Y = 123,636.44; thence along the boundaries of said State Lease No. 17309 the following courses: North 03 degrees 15 minutes 07 seconds East 1,917.83 feet to a point having Coordinates of X = 2,180,109.06 and Y = 125,551.18, West 1,509.06 feet to a point having Coordinates of X = 2,178,600.00 and Y = 125,551.18, South 929.41 feet to a point having Coordinates of X = 2,178,600.00 and Y = 124,621.77 and South 28 degrees 47 minutes 12 seconds West 1,124.27 feet to a point on its west boundary having Coordinates of X = 2,178,058.61 and Y = 123,636.44; thence West 6,458.61 feet to a point having Coordinates of X = 2,171,600.00 and Y = 123,636.43; thence North 6,561.01 feet to the point of beginning, containing approximately **2,069.87 acres**, all as more particularly outlined on a plat on file in the Office of Mineral Resources, Department of Natural Resources. All bearings, distances and coordinates are based on Louisiana Coordinate System of 1927, (North or South Zone).

NOTE: The above description of the Tract nominated for the purpose of acquiring a mineral lease or a geophysical agreement has been provided and corrected, where required, exclusively by the nominating party. Any mineral lease or geophysical agreement selected from this Tract and awarded by the Louisiana State Mineral and Energy Board shall be without warranty of any kind, either express, implied or statutory including, but not limited to, title or the implied warranties of merchantability and fitness for a particular purpose.

An error or omission in the nominating party's Tract description may require that a State mineral lease or geophysical agreement be modified, canceled or abrogated due to the existence of conflicting leases, operating agreements, private claims or other future obligations or conditions within the Tract described. In such case, however, the Louisiana State Mineral and Energy Board shall not be obligated to refund any consideration paid by the Lessee prior to such modification, cancellation or abrogation including, but not limited to, bonuses, rentals and royalties.

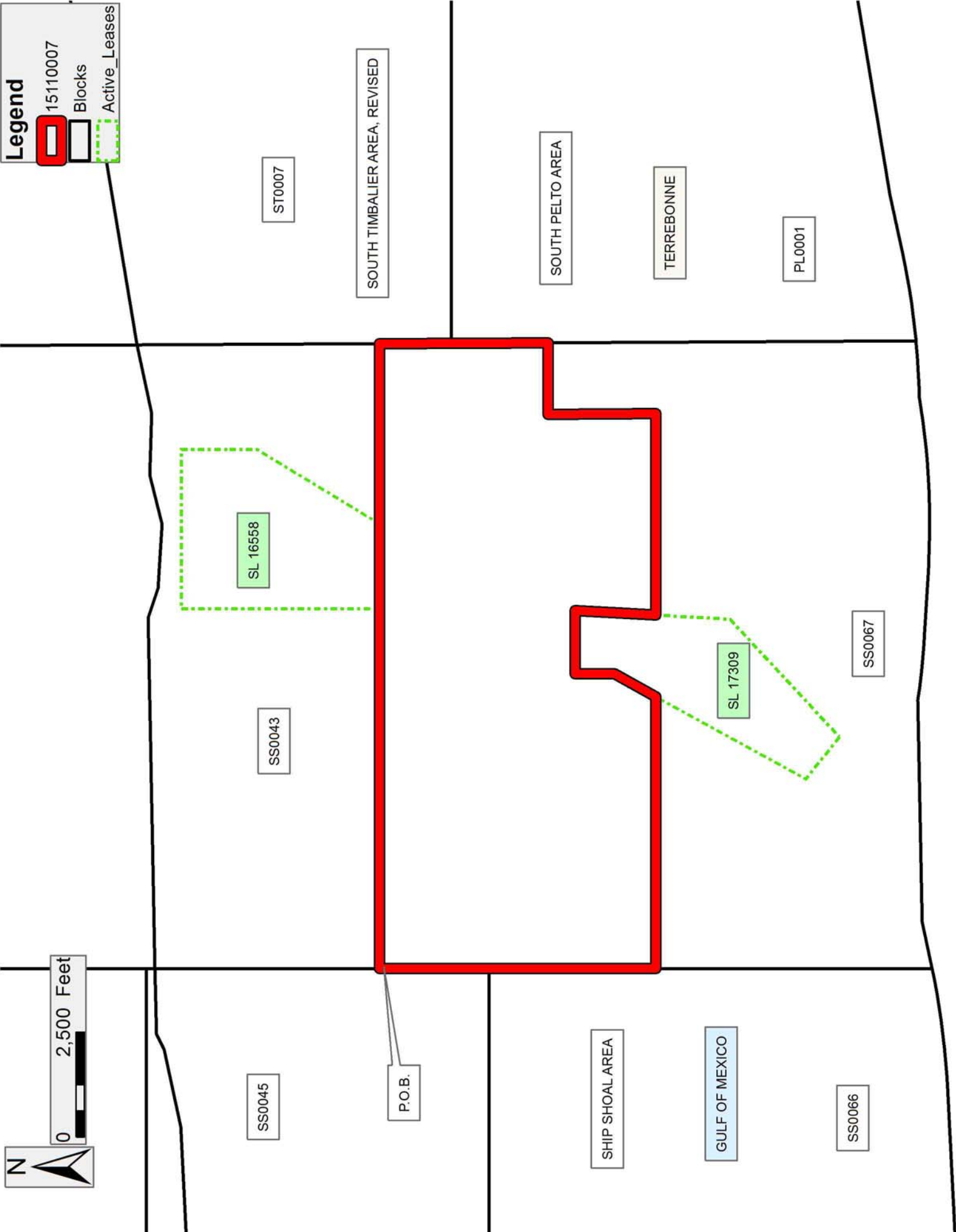
NOTE: The State of Louisiana does hereby reserve, and this lease shall be subject to, the imprescriptible right of surface use in the nature of a servitude in favor of the Department of Natural Resources, including its Offices and Commissions, for the sole purpose of implementing, constructing, servicing and maintaining approved coastal zone management and/or restoration projects. Utilization of any and all rights derived under this lease by the mineral lessee, its agents, successors or assigns, shall not interfere with nor hinder the reasonable surface use by the Department of Natural Resources, its Offices or Commissions, as herein above reserved.

Applicant: CYPRESS ENERGY CORPORATION

Bidder	Cash Payment	Price/Acre	Rental	Oil	Gas	Other

Legend

- 15110007
- Blocks
- Active_Leases



TRACT 44425 - Portion of Block 66, Ship Shoal Area, Terrebonne Parish, Louisiana

The beds and bottoms of all water bodies belonging to the State of Louisiana located in Block 66, Ship Shoal Area, together with any present lands formed by accretion to the shoreline or islands formed therein, located in Terrebonne Parish, Louisiana, owned by and not presently under mineral lease as of November 12, 2015, from the State of Louisiana, the geographical area of which is more fully described as follows: Beginning at a point within Block 66, Ship Shoal Area also being the North tip of State Lease No. 14572 having Coordinates of X = 2,156,000.00 and Y = 123,791.99; thence East 15,599.99 feet to a point having Coordinates of X = 2,171,600.00 and Y = 123,791.99; thence South 6,718.05 feet to a point on the Three Mile Line, as decreed by the Supreme Court of the United States, as determined by a Special Master appointed therein, in litigation styled *United States v. State of Louisiana et al No. 9 Original*, in 1975, having Coordinates of X = 2,171,600.00 and Y = 117,073.94; thence along said Three Mile Line the following: Southwesterly along an arc to the right having a radius of 18,240.60 feet and a center of X = 2,167,836 and Y = 134,922 to the Southeast corner of Operating Agreement No. 0312 having Coordinates of X = 2,169,027.69 and Y = 116,719.94; thence along the boundaries of said OA0312 the following courses: North 27 degrees 33 minutes 20 seconds East 556.15 feet to a point having Coordinates of X = 2,169,284.97 and Y = 117,213.00, North 24 degrees 04 minutes 11 seconds East 486.99 feet to a point having Coordinates of X = 2,169,483.59 and Y = 117,657.65, North 39 degrees 03 minutes 21 seconds West 280.77 feet to a point having Coordinates of X = 2,169,306.68 and Y = 117,875.68, North 45 degrees 00 minutes 27 seconds West 215.47 feet to a point having Coordinates of X = 2,169,154.30 and Y = 118,028.02, North 53 degrees 39 minutes 49 seconds West 231.52 feet to a point having Coordinates of X = 2,168,967.80 and Y = 118,165.20, North 53 degrees 15 minutes 11 seconds West 196.50 feet to a point having Coordinates of X = 2,168,810.35 and Y = 118,282.76, North 51 degrees 24 minutes 19 seconds West 101.73 feet to a point having Coordinates of X = 2,168,730.84 and Y = 118,346.22, North 47 degrees 47 minutes 24 seconds West 146.15 feet to a point having Coordinates of X = 2,168,622.59 and Y = 118,444.41, North 46 degrees 30 minutes 04 seconds West 62.89 feet to a point having Coordinates of X = 2,168,576.97 and Y = 118,487.70, North 43 degrees 46 minutes 59 seconds West 136.17 feet to a point having Coordinates of X = 2,168,482.75 and Y = 118,586.01, North 42 degrees 33 minutes 57 seconds West 133.69 feet to a point having Coordinates of X = 2,168,392.32 and Y = 118,684.47, North 40 degrees 49 minutes 22 seconds West 129.11 feet to a point having Coordinates of X = 2,168,307.92 and Y = 118,782.17, North 42 degrees 36 minutes 06 seconds West 161.89 feet to a point having Coordinates of X = 2,168,198.34 and Y = 118,901.33, North 51 degrees 40 minutes 03 seconds West 150.67 feet to a point having Coordinates of X = 2,168,080.15 and Y = 118,994.78, North 60 degrees 39 minutes 19 seconds West 139.06 feet to a point having Coordinates of X = 2,167,958.93 and Y = 119,062.93, North 65 degrees 21 minutes 04 second West 197.94 feet to a point having Coordinates of X = 2,167,779.03 and Y = 119,145.48, North 64 degrees 44

minutes 51 seconds West 180.59 feet to a point having Coordinates of X = 2,167,615.70 and Y = 119,222.52, South 48 degrees 10 minutes 57 seconds West 144.82 feet to a point having Coordinates of X = 2,167,507.77 and Y = 119,125.96, South 53 degrees 35 minutes 43 seconds West 126.66 feet to a point having Coordinates of X = 2,167,405.83 and Y = 119,050.79, South 58 degrees 52 minutes 39 seconds West 108.77 feet to a point having Coordinates of X = 2,167,312.72 and Y = 118,994.57 and South 51 degrees 45 minutes 13 seconds East 2.25 feet to the Northeast corner of Eastern portion of State Lease No. 19749 as amended having Coordinates of X = 2,167,314.48 and Y = 118,993.18; thence along the boundaries of said eastern portion of State Lease No. 19749 the following courses: South 57 degrees 45 minutes 42 seconds West 161.95 feet to a point having Coordinates of X = 2,167,177.50 and Y = 118,906.79, South 67 degrees 40 minutes 05 seconds West 149.22 feet to a point having Coordinates of X = 2,167,039.47 and Y = 118,850.09 and North 87 degrees 39 minutes 42 seconds West 41.75 feet to its Northwest corner and the interior Northeast corner of said OA0312 having Coordinates of X = 2,166,997.75 and Y = 118,851.79; thence along the boundaries of said OA0312 the following courses: North 87 degrees 39 minutes 31 seconds West 90.73 feet to a point having Coordinates of X = 2,166,907.10 and Y = 118,855.50, North 78 degrees 39 minutes 07 seconds West 139.05 feet to a point having Coordinates of X = 2,166,770.77 and Y = 118,882.86 and North 70 degrees 02 minutes 22 seconds West 174.57 feet to its Northwest corner and the Northeast corner of western portion of State Lease No. 19749, as amended having Coordinates of X = 2,166,606.69 and Y = 118,942.45; thence along the boundaries of said Western portion of State Lease No. 19749 the following courses: North 70 degrees 02 minutes 22 seconds West 3.13 feet to a point having Coordinates of X = 2,166,603.75 and Y = 118,943.52, North 65 degrees 01 minutes 35 seconds West 212.58 feet to a point having Coordinates of X = 2,166,411.05 and Y = 119,033.27, North 66 degrees 18 minutes 15 seconds West 184.93 feet to a point having Coordinates of X = 2,166,241.71 and Y = 119,107.59, South 75 degrees 51 minutes 50 seconds West 71.04 feet to a point having Coordinates of X = 2,166,172.82 and Y = 119,090.24, South 58 degrees 16 minutes 42 seconds West 72.75 feet to point having Coordinates of X = 2,166,110.94 and Y = 119,051.99, South 50 degrees 14 minutes 58 seconds West 102.48 feet to a point having Coordinates of X = 2,166,032.15 and Y = 118,986.46, South 41 degrees 34 minutes 56 seconds West 139.37 feet to a point having Coordinates of X = 2,165,939.65 and Y = 118,882.21, South 36 degrees 17 minutes 27 seconds West 244.74 feet to a point having Coordinates of X = 2,165,794.79 and Y = 118,684.94, South 34 degrees 46 minutes 58 seconds West 195.89 feet to a point having Coordinates of X = 2,165,683.04 and Y = 118,524.05, South 32 degrees 21 minutes 40 seconds West 189.44 feet to a point having Coordinates of X = 2,165,581.64 and Y = 118,364.03, South 26 degrees 04 minutes 42 seconds West 180.60 feet to a point having Coordinates of X = 2,165,502.25 and Y = 118,201.82, South 15 degrees 58 minutes 47 seconds West 128.52 feet to a point having Coordinates of X = 2,165,466.87 and Y = 118,078.27, South 02 degrees 04 minutes 03 seconds West 88.42 feet to a point having Coordinates of X = 2,165,463.68 and Y = 117,989.91, South 06 degrees 55 minutes 14 seconds

East 111.62 feet to a point having Coordinates of X = 2,165,477.13 and Y = 117,879.10, South 20 degrees 08 minutes 02 seconds East 116.15 feet to a point having Coordinates of X = 2,165,517.11 and Y = 117,770.05, South 34 degrees 44 minutes 03 seconds East 127.24 feet to a point having Coordinates of X = 2,165,589.61 and Y = 117,665.48, South 41 degrees 05 minutes 22 seconds East 197.10 feet to a point having Coordinates of X = 2,165,719.15 and Y = 117,516.93, South 40 degrees 57 minutes 09 seconds East 249.45 feet to a point having Coordinates of X = 2,165,882.65 and Y = 117,328.53, South 44 degrees 53 minutes 18 seconds East 192.48 feet to a point having Coordinates of X = 2,166,018.49 and Y = 117,192.16, South 44 degrees 50 minutes 17 seconds East 330.19 feet to a point having Coordinates of X = 2,166,251.31 and Y = 116,958.02, South 46 degrees 11 minutes 50 seconds East 351.25 feet to a point having Coordinates of X = 2,166,504.82 and Y = 116,714.89 and South 45 degrees 11 minutes 54 seconds East 167.49 feet to a point on said Three Mile Line, having Coordinates of X = 2,166,623.66 and Y = 116,596.87; thence along the said Three Mile Line the following courses: Southwesterly along a straight line to a point having Coordinates of X = 2,165,394 and Y = Y = 116,535, Northwesterly along an arc to the right having a radius of 18,240.60 feet and a center of X = 2,164,471 and Y = 134,753 to a point having Coordinates of X = 2,160,352.00 and Y = 116,985.00, Northwesterly along a straight line to a point having Coordinates of X = 2,156,273.00 and Y = 117,355.00 and Northwesterly along an arc to the right having a radius of 18,240.60 feet and a center of X = 2,157,920 and Y = 135,521 to the Southern tip of said State Lease No. 14572 having Coordinates of X = 2,156,000.00 and Y = 117,381.73; thence along the boundaries of said State Lease No. 14572 the following courses: North 73 degrees 41 minutes 54 seconds East 2,871.03 feet to a point having Coordinates of X = 2,158,755.60 and Y = 118,187.61 and North 26 degrees 10 minutes 58 seconds West 6,245.19 feet to the point of beginning, **LESS AND EXCEPT** in their entirety State Lease No. 17596 and State Lease No. 10830 as follows: Beginning at a point having Coordinates of X = 2,156,000.00 and Y = 123,791.99; thence South 78 degrees 53 minutes 08 seconds East 4,668.82 feet to the point of beginning, being the Northwest corner of State Lease No. 17596 having Coordinates of X = 2,160,581.25 and Y = 122,891.99; thence East 1,500.00 feet along the North boundary of said State Lease No. 17596 to its Northeast corner and the Northwest corner of State Lease No. 10830 having Coordinates of X = 2,162,081.25 and Y = 122,891.99; thence along the boundaries of said State Lease No. 10830 the following courses: continue East 1,462.09 feet to a point having Coordinates of X = 2,163,543.34 and Y = 122,891.99, South 2,000.00 feet to a point having Coordinates of X = 2,163,543.34 and Y = 120,891.99 and West 1,462.09 feet to its Southwest corner and the Southeast corner of said State Lease No. 17596 having Coordinates of X = 2,162,081.25 and Y = 120,891.99; thence along the boundaries of said State Lease No. 17596 the following courses: West 1,500.00 feet to a point having Coordinates of X = 2,160,581.25 and Y = 120,891.99 and North 2,000.00 feet to the point of beginning; containing approximately **1,985.27 acres**, **LESS AND EXCEPT** that portion thereof, if any, lying seaward of the line three nautical miles from the coast line of Louisiana, as said three

mile line has been decreed by the Supreme Court of the United States, as determined by a Special Master appointed therein, in litigation styled **United States v. State of Louisiana et al No. 9 Original**, in 1975, all as more particularly outlined on a plat in the Office of Mineral Resources, Department of Natural Resources. All bearings, distances and coordinates are based on the Louisiana Coordinate System of 1927, (South Zone).

NOTE: The above description of the Tract nominated for the purpose of acquiring a mineral lease or a geophysical agreement has been provided and corrected, where required, exclusively by the nominating party. Any mineral lease or geophysical agreement selected from this Tract and awarded by the Louisiana State Mineral and Energy Board shall be without warranty of any kind, either express, implied or statutory including, but not limited to, title or the implied warranties of merchantability and fitness for a particular purpose.

An error or omission in the nominating party's Tract description may require that a State mineral lease or geophysical agreement be modified, canceled or abrogated due to the existence of conflicting leases, operating agreements, private claims or other future obligations or conditions within the Tract described. In such case, however, the Louisiana State Mineral and Energy Board shall not be obligated to refund any consideration paid by the Lessee prior to such modification, cancellation or abrogation including, but not limited to, bonuses, rentals and royalties.

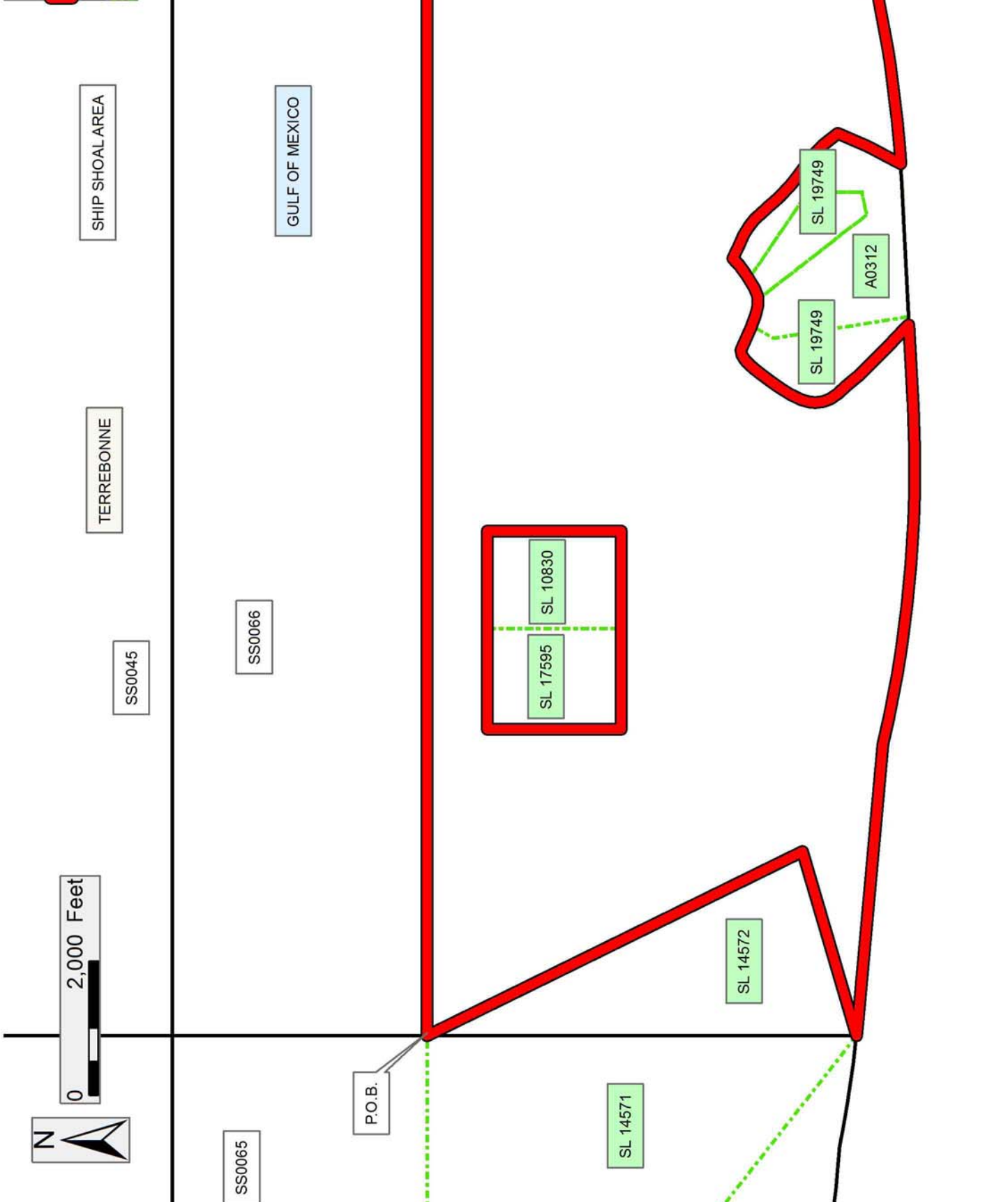
NOTE: The State of Louisiana does hereby reserve, and this lease shall be subject to, the imprescriptible right of surface use in the nature of a servitude in favor of the Department of Natural Resources, including its Offices and Commissions, for the sole purpose of implementing, constructing, servicing and maintaining approved coastal zone management and/or restoration projects. Utilization of any and all rights derived under this lease by the mineral lessee, its agents, successors or assigns, shall not interfere with nor hinder the reasonable surface use by the Department of Natural Resources, its Offices or Commissions, as herein above reserved.

Bidder	Cash Payment	Price/Acre	Rental	Oil	Gas	Other

Applicant: CYPRESS ENERGY CORPORATION

Legend

- 15110006
- Blocks
- Active_Leases



TRACT 44426 - Portion of Block 67, Ship Shoal Area, Terrebonne Parish, Louisiana

The beds and bottoms of all water bodies belonging to the State of Louisiana located in Block 67, Ship Shoal Area, together with any present lands formed by accretion to the shoreline or islands formed therein, located in Terrebonne Parish, Louisiana, owned by and not presently under mineral lease as of November 12, 2015, from the State of Louisiana, the geographical area of which is more fully described as follows: Beginning at a point on the West line of Block 67, Ship Shoal Area, having Coordinates of X = 2,171,600.00 and Y = 123,636.43; thence East 6,458.62 feet to a point on the West boundary of State Lease No. 17309 as amended having Coordinates of X = 2,178,058.61 and Y = 123,636.44; thence along the boundaries of said State Lease No. 17309 the following courses: South 28 degrees 47 minutes 12 seconds West 4,067.31 feet to a point having Coordinates of X = 2,176,100.00 and Y = 120,071.77, South 51 degrees 20 minutes 25 seconds East 1,280.63 feet to a point having Coordinates of X = 2,177,100.00 and Y = 119,271.77, North 47 degrees 07 minutes 16 seconds East 3,821.00 feet to a point having Coordinates of X = 2,179,900.00 and Y = 121,871.77 and North 03 degrees 15 minutes 07 seconds East 1,767.52 feet to a point on its East boundary having Coordinates of X = 2,180,000.27 and Y = 123,636.44; thence East 4,787.50 feet to a point on the West boundary of Operating Agreement No. 0285 having Coordinates of X = 2,184,787.77 and Y = 123,636.45; thence along the boundaries of said Operating Agreement No. 0285 the following courses: South 00 degrees 17 minutes 30 seconds East 3,939.06 feet to a point having Coordinates of X = 2,184,807.82 and Y = 119,697.44 and East 1,700.00 feet to its Southeast corner having Coordinates of X = 2,186,507.82 and Y = 119,697.44; thence South 2,245.97 feet to a point on the Three Mile Line, as decreed by the Supreme Court of the United States, as determined by a Special Master appointed therein, in litigation styled *United States v. State of Louisiana et al No. 9 Original*, in 1975, having Coordinates of X = 2,186,507.82 and Y = 117,451.47; thence along said Three Mile Line the following: Southwesterly along an arc to the right having a radius of 18,240.60 feet and a center of X = 2,184,788 and Y = 135,611 to a point having Coordinates of X = 2,185,156 and Y = 117,374, Southwesterly along an arc to the right having a radius of 18,240.60 feet and a center of X = 2,182,166 and Y = 135,368 to a point having Coordinates of X = 2,181,100 and Y = 117,159, Northwesterly along a straight line to a point having Coordinates of X = 2,179,579 and Y = 117,248, Northwesterly along an arc to the right having a radius of 18,240.60 feet and a center of X = 2,180,645 and Y = 135,457 to a point having Coordinates of X = 2,177,979 and Y = 117,412, Southwesterly along a straight line to a point having Coordinates of X = 2,172,700 and Y = 117,308, Southwesterly along a straight line to a point having Coordinates of X = 2,171,638 and Y = 117,082 and Southwesterly along an arc to the right having a radius of 18,240.60 feet and a center of X = 2,167,836 and Y = 134,922 to a point having Coordinates of X = 2,171,600.00 and Y = 117,073.94; thence North 6,562.49 feet to the point of beginning, containing approximately **1,808.28 acres, LESS AND EXCEPT** that portion thereof, if any, lying seaward of the line three nautical

miles from the coast line of Louisiana, as said three mile line has been decreed by the Supreme Court of the United States, as determined by a Special Master appointed therein, in litigation styled **United States v. State of Louisiana et al No. 9 Original**, in 1975, all as more particularly outlined on a plat in the Office of Mineral Resources, Department of Natural Resources. All bearings, distances and coordinates are based on the Louisiana Coordinate System of 1927, (South Zone).

NOTE: The above description of the Tract nominated for the purpose of acquiring a mineral lease or a geophysical agreement has been provided and corrected, where required, exclusively by the nominating party. Any mineral lease or geophysical agreement selected from this Tract and awarded by the Louisiana State Mineral and Energy Board shall be without warranty of any kind, either express, implied or statutory including, but not limited to, title or the implied warranties of merchantability and fitness for a particular purpose.




An error or omission in the nominating party's Tract description may require that a State mineral lease or geophysical agreement be modified, canceled or abrogated due to the existence of conflicting leases, operating agreements, private claims or other future obligations or conditions within the Tract described. In such case, however, the Louisiana State Mineral and Energy Board shall not be obligated to refund any consideration paid by the Lessee prior to such modification, cancellation or abrogation including, but not limited to, bonuses, rentals and royalties.

NOTE: The State of Louisiana does hereby reserve, and this lease shall be subject to, the imprescriptible right of surface use in the nature of a servitude in favor of the Department of Natural Resources, including its Offices and Commissions, for the sole purpose of implementing, constructing, servicing and maintaining approved coastal zone management and/or restoration projects. Utilization of any and all rights derived under this lease by the mineral lessee, its agents, successors or assigns, shall not interfere with nor hinder the reasonable surface use by the Department of Natural Resources, its Offices or Commissions, as herein above reserved.

Bidder	Cash Payment	Price/Acre	Rental	Oil	Gas	Other

Applicant: CYPRESS ENERGY CORPORATION

Legend

-  15110009
-  Blocks
-  Active_Leases

