

**TRACT 44090 - Concordia Parish, Louisiana**

All of the lands now or formerly constituting the beds and bottoms of all water bodies of every nature and description as to which title is vested in the State of Louisiana, together with all islands arising therein and other lands formed by accretion or by reliction, where allowed by law, excepting tax adjudicated lands, and not presently under mineral lease on November 12, 2014, situated in Concordia Parish, Louisiana, and more particularly described as follows: Beginning at a point having Coordinates of X = 2,249,219.11 and Y = 272,606.23; thence East 18,480.00 feet to a point having Coordinates of X = 2,267,699.11 and Y = 272,606.23; thence South 17,980.00 feet to a point having Coordinates of X = 2,267,699.11 and Y = 254,626.23; thence West 18,480.00 feet to a point having Coordinates of X = 2,249,219.11 and Y = 254,626.23; thence North 17,980.00 feet to the point of beginning, **LESS AND EXCEPT** any right, title, and interest in lands owned by and not under lease from the State of Louisiana, on behalf of Concordia Parish School Board, situated in Section 16, Township 5 North, Range 8 East, Concordia Parish, Louisiana, contained within the above described tract, containing approximately **95 acres**, all as more particularly outlined on a plat on file in the Office of Mineral Resources, Department of Natural Resources. All bearings, distances and coordinates are based on Louisiana Coordinate System of 1927, (North or South Zone), where applicable.

NOTE: The above description of the Tract nominated for lease has been provided and corrected, where required, exclusively by the nomination party. Any mineral lease selected from this Tract and awarded by the Louisiana State Mineral and Energy Board shall be without warranty of any kind, either express, implied, or statutory, including, but not limited to, the implied warranties of merchantability and fitness for a particular purpose. Should the mineral lease awarded by the Louisiana State Mineral and Energy Board be subsequently modified, cancelled or abrogated due to the existence of conflicting leases, operating agreements, private claims or other future obligations or conditions which may affect all or any portion of the leased Tract, it shall not relieve the Lessee of the obligation to pay any bonus due thereon to the Louisiana State Mineral and Energy Board, nor shall the Louisiana State Mineral and Energy Board be obligated to refund any consideration paid by the Lessor prior to such modification, cancellation, or abrogation, including, but not limited to, bonuses, rentals and royalties.

Bidder	Cash Payment	Price/Acre	Rental	Oil	Gas	Other

Applicant: ALJ ENERGY

Legend



14110006

CONCORDIA



0 2,500 Feet

P.O.B.

WYCHES BAYOU

BAYOU COCODRIE

**TRACT 44091 - Concordia Parish, Louisiana**

All of the lands now or formerly constituting the beds and bottoms of all water bodies of every nature and description as to which title is vested in the State of Louisiana, together with all islands arising therein and other lands formed by accretion or by reliction, where allowed by law, excepting tax adjudicated lands, and not presently under mineral lease on November 12, 2014, situated in Concordia Parish, Louisiana, and more particularly described as follows: Beginning at the Southwest corner of State Lease No. 20722 having Coordinates of X = 2,270,000.00 and Y = 167,463.00; thence East 4,870.86 feet along the south boundary of said State Lease No. 20722 to a point having Coordinates of X = 2,274,870.86 and Y = 167,463.00; thence South 41 degrees 39 minutes 53 seconds East 15,030.95 feet to a point having Coordinates of X = 2,284,863.00 and Y = 156,234.17; thence South 47 degrees 28 minutes 54 seconds West 5,784.19 feet to a point having Coordinates of X = 2,280,599.69 and Y = 152,325.07; thence North 35 degrees 00 minutes 00 seconds West 18,480.00 feet to the point of beginning, **LESS AND EXCEPT** that portion, if any, of the above described tract that may lie inside of the boundary of the Richard K. Yancy WMA, containing approximately **399 acres**, all as more particularly outlined on a plat on file in the Office of Mineral Resources, Department of Natural Resources. All bearings, distances and coordinates are based on Louisiana Coordinate System of 1927, (North or South Zone), where applicable.

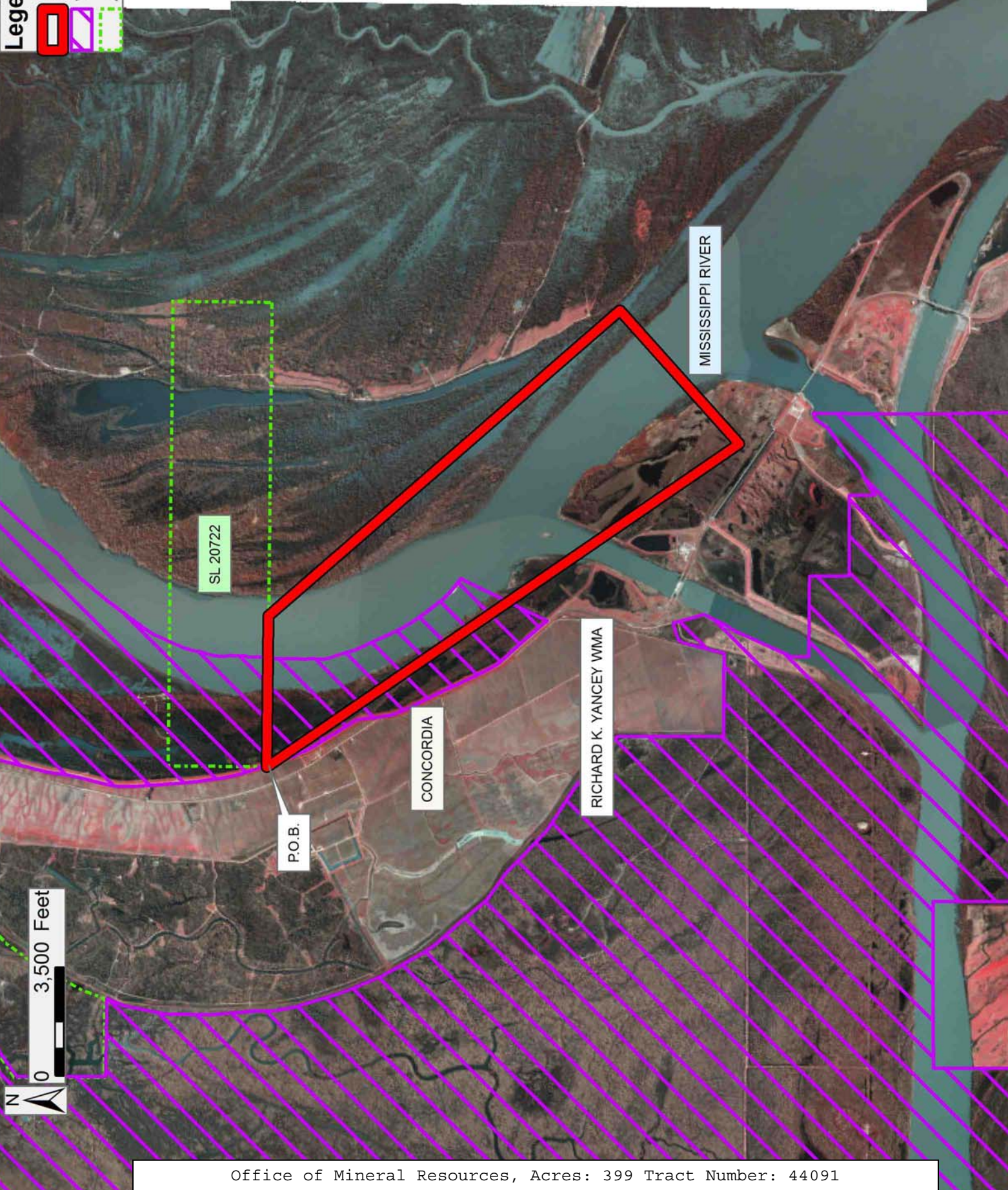
NOTE: The above description of the Tract nominated for lease has been provided and corrected, where required, exclusively by the nomination party. Any mineral lease selected from this Tract and awarded by the Louisiana State Mineral and Energy Board shall be without warranty of any kind, either express, implied, or statutory, including, but not limited to, the implied warranties of merchantability and fitness for a particular purpose. Should the mineral lease awarded by the Louisiana State Mineral and Energy Board be subsequently modified, cancelled or abrogated due to the existence of conflicting leases, operating agreements, private claims or other future obligations or conditions which may affect all or any portion of the leased Tract, it shall not relieve the Lessee of the obligation to pay any bonus due thereon to the Louisiana State Mineral and Energy Board, nor shall the Louisiana State Mineral and Energy Board be obligated to refund any consideration paid by the Lessor prior to such modification, cancellation, or abrogation, including, but not limited to, bonuses, rentals and royalties.

Applicant: ALJ ENERGY

Bidder	Cash Payment	Price/Acre	Rental	Oil	Gas	Other

**Legend**

-  14110004
-  Wildlife
-  Active\_Leases



**TRACT 44092 - Concordia Parish, Louisiana**

All of the lands now or formerly constituting the beds and bottoms of all water bodies of every nature and description as to which title is vested in the State of Louisiana, together with all islands arising therein and other lands formed by accretion or by reliction, where allowed by law, excepting tax adjudicated lands, and not presently under mineral lease on November 12, 2014, situated in Concordia Parish, Louisiana, and more particularly described as follows: Beginning at a point having Coordinates of X = 2,280,599.69 and Y = 152,325.07; thence North 47 degrees 28 minutes 54 seconds East 5,784.19 feet to a point having Coordinates of X = 2,284,863.00 and Y = 156,234.17; thence South 39 degrees 06 minutes 20 seconds East 18,285.14 feet to a point having Coordinates of X = 2,296,396.35 and Y = 142,045.16; thence South 49 degrees 25 minutes 17 seconds West 5,915.99 feet to a point having Coordinates of X = 2,291,903.06 and Y = 138,196.87; thence North 38 degrees 39 minutes 42 seconds West 18,093.43 feet to the point of beginning, **LESS AND EXCEPT** that portion, if any, of the above described tract that may lie inside of the boundary of the Richard K. Yancy WMA, containing approximately **774 acres**, all as more particularly outlined on a plat on file in the Office of Mineral Resources, Department of Natural Resources. All bearings, distances and coordinates are based on Louisiana Coordinate System of 1927, (North or South Zone), where applicable.

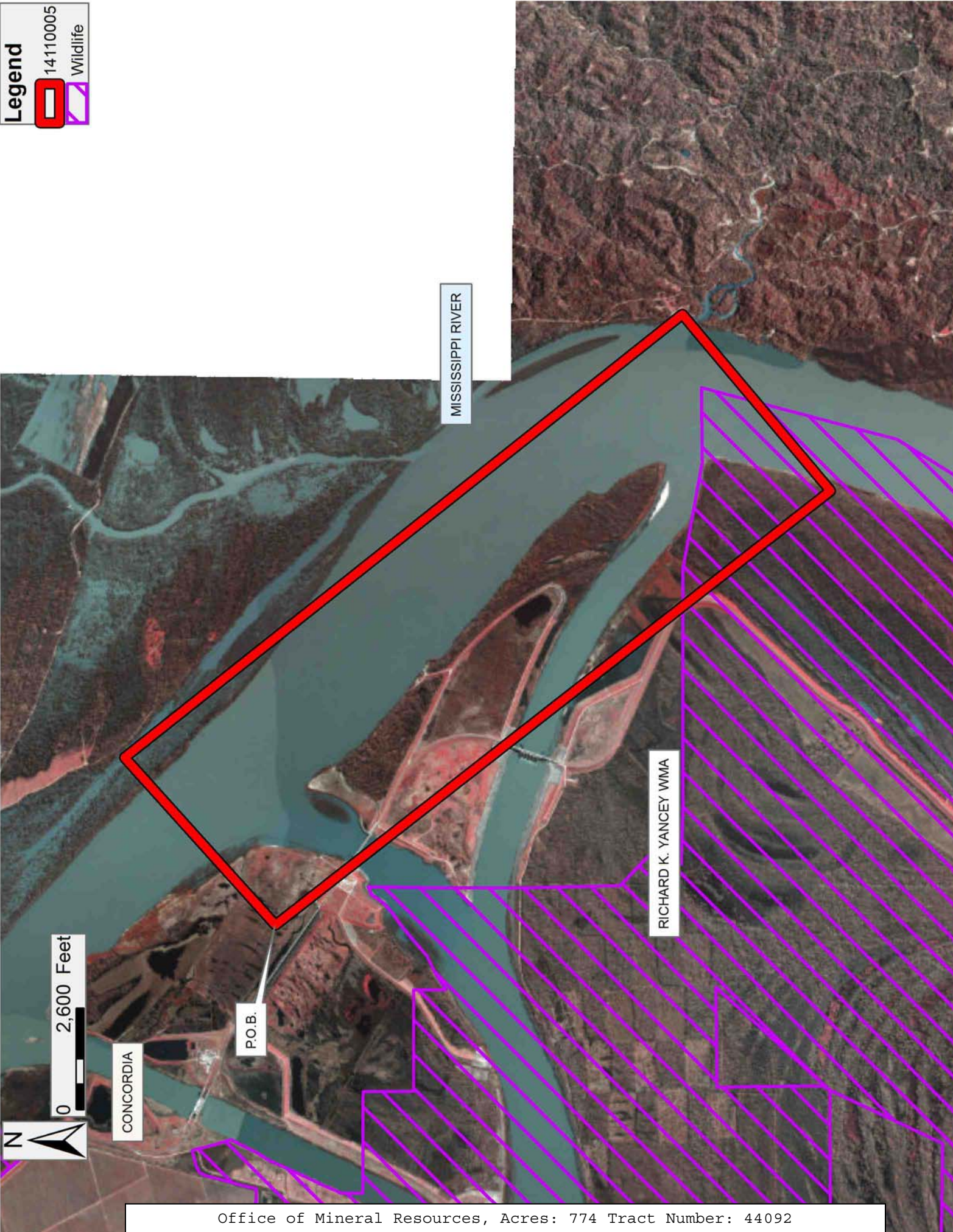
NOTE: The above description of the Tract nominated for lease has been provided and corrected, where required, exclusively by the nomination party. Any mineral lease selected from this Tract and awarded by the Louisiana State Mineral and Energy Board shall be without warranty of any kind, either express, implied, or statutory, including, but not limited to, the implied warranties of merchantability and fitness for a particular purpose. Should the mineral lease awarded by the Louisiana State Mineral and Energy Board be subsequently modified, cancelled or abrogated due to the existence of conflicting leases, operating agreements, private claims or other future obligations or conditions which may affect all or any portion of the leased Tract, it shall not relieve the Lessee of the obligation to pay any bonus due thereon to the Louisiana State Mineral and Energy Board, nor shall the Louisiana State Mineral and Energy Board be obligated to refund any consideration paid by the Lessor prior to such modification, cancellation, or abrogation, including, but not limited to, bonuses, rentals and royalties.

Applicant: ALJ ENERGY

Bidder	Cash Payment	Price/Acre	Rental	Oil	Gas	Other



**Legend**  
14110005  
Wildlife



**TRACT 44093 - East Baton Rouge and West Baton Rouge Parishes, Louisiana**

All of the lands now or formerly constituting the beds and bottoms of all water bodies of every nature and description as to which title is vested in the State of Louisiana, together with all islands arising therein and other lands formed by accretion or by reliction, where allowed by law, excepting tax adjudicated lands, and not presently under mineral lease on November 12, 2014, situated in East Baton Rouge and West Baton Rouge Parishes, Louisiana, and more particularly described as follows: Beginning at a point having Coordinates of X = 2,022,441.55 and Y = 708,778.14; thence South approximately 11,067.44 feet to a point on the north boundary of State Lease No. 21107 having Coordinates of X = 2,022,441.55 and Y = 697,710.71; thence West approximately 3,454.12 feet along the north boundary of said State Lease No. 21107 to its Northwest corner and the Northeast corner of State Lease No. 18804, as amended having Coordinates of X = 2,018,987.42 and Y = 697,710.68; thence along the boundaries of said State Lease No. 18804 the following courses: West 5,306.64 feet to a point having Coordinates of X = 2,013,680.79 and Y = 697,710.68 and South 08 degrees 06 minutes 54 seconds West 5,306.64 feet to its Southwest corner having Coordinates of X = 2,012,931.71 and Y = 692,457.17; thence South 09 degrees 06 minutes 29 seconds West 2,186.60 feet to a point having Coordinates of X = 2,012,585.58 and Y = 690,298.14; thence West 8,624.02 feet to a point having Coordinates of X = 2,003,961.55 and Y = 690,298.14; thence North 18,172.86 feet to a point having Coordinates of X = 2,003,961.55 and Y = 708,471.00; thence East 8,371.45 feet to a point having Coordinates of X = 2,012,333.00 and Y = 708,471.00 and North 307.14 feet to a point on its east boundary having Coordinates of X = 2,012,333.00 and Y = 708,778.14; thence East 10,108.55 feet to the point of beginning, (This tract includes only waterbottoms claimed and owned by the state and specifically excludes any land which the state may claim or own and to which the mineral rights are vested in the state), containing approximately **1726 acres**, all as more particularly outlined on a plat on file in the Office of Mineral Resources, Department of Natural Resources. All bearings, distances and coordinates are based on Louisiana Coordinate System of 1927, (North or South Zone), where applicable.

NOTE: The above description of the Tract nominated for lease has been provided and corrected, where required, exclusively by the nomination party. Any mineral lease selected from this Tract and awarded by the Louisiana State Mineral and Energy Board shall be without warranty of any kind, either express, implied, or statutory, including, but not limited to, the implied warranties of merchantability and fitness for a particular purpose. Should the mineral lease awarded by the Louisiana State Mineral and Energy Board be subsequently modified, cancelled or abrogated due to the existence of conflicting leases, operating agreements, private claims or other future obligations or conditions which may affect all or any portion of the leased Tract, it shall not relieve the Lessee of the obligation to pay any bonus due thereon to the Louisiana State Mineral and Energy Board, nor shall the Louisiana State Mineral and Energy Board be

obligated to refund any consideration paid by the Lessor prior to such modification, cancellation, or abrogation, including, but not limited to, bonuses, rentals and royalties.

Applicant: LESLIE M. COOPER

Bidder	Cash Payment	Price/Acre	Rental	Oil	Gas	Other

**Legend**  
14110002  
Active\_Leases

EAST BATON ROUGE

P.O.B.

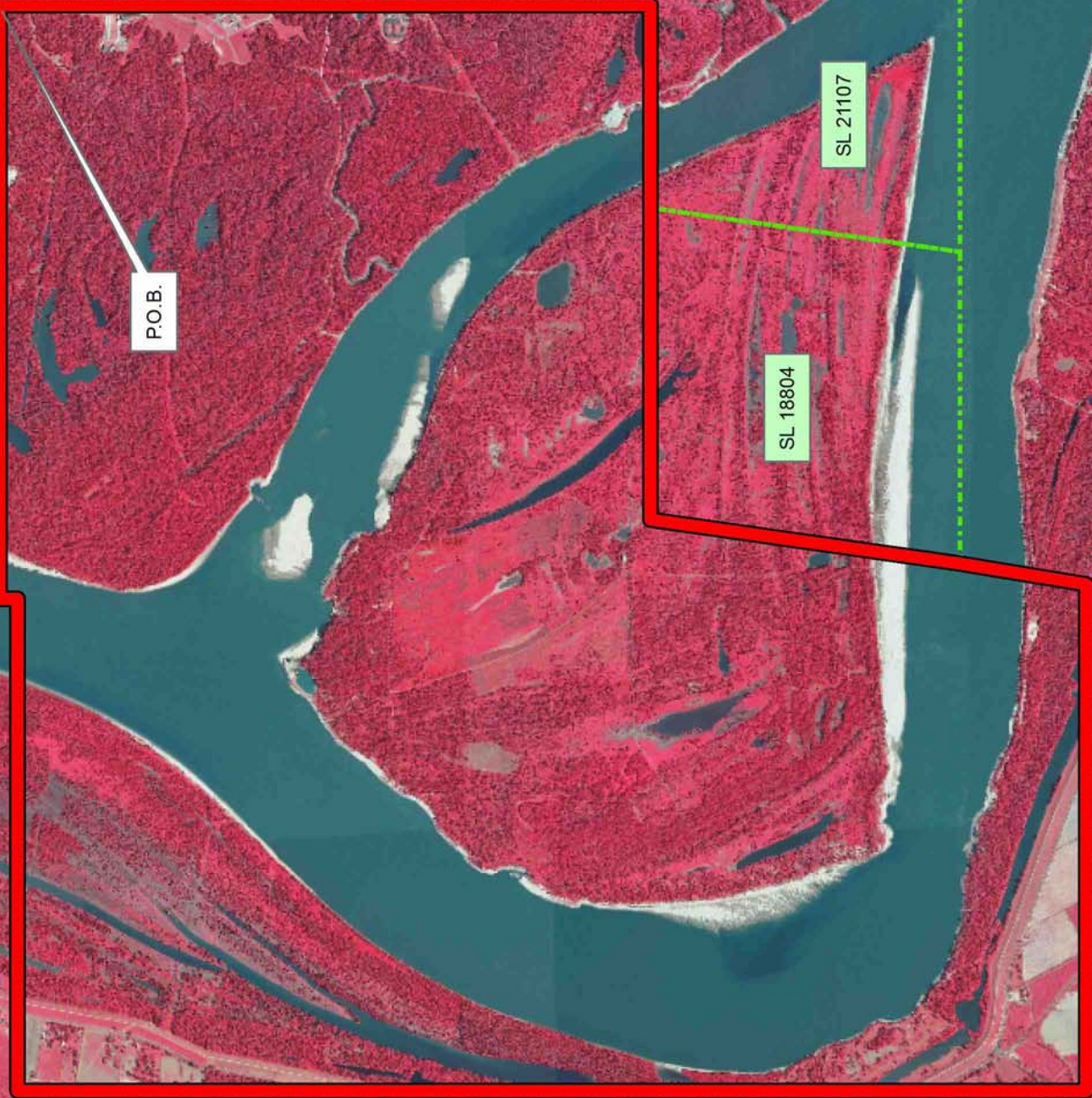
MISSISSIPPI RIVER

SL 18804

SL 21107

0 2,500 Feet

WEST BATON ROUGE



**TRACT 44094 - East Baton Rouge and West Baton Rouge Parishes, Louisiana**

All of the lands now or formerly constituting the beds and bottoms of all water bodies of every nature and description as to which title is vested in the State of Louisiana, together with all islands arising therein and other lands formed by accretion or by reliction, where allowed by law, excepting tax adjudicated lands, and not presently under mineral lease on November 12, 2014, situated in East Baton Rouge and West Baton Rouge Parishes, Louisiana, and more particularly described as follows: Beginning at a point having Coordinates of X = 2,031,411.71 and Y = 692,457.17; thence South approximately 18,480.00 feet to a point having Coordinates of X = 2,031,411.71 and Y = 673,977.17; thence West approximately 18,480.00 feet to a point having Coordinates of X = 2,012,931.71 and Y = 673,977.17; thence North 01 degrees 12 minutes 54 seconds West approximately 16,324.64 feet to a point having Coordinates of X = 2,012,585.58 and Y = 690,298.14; thence North 09 degrees 06 minutes 29 seconds East 2,186.60 feet to the Southwest corner of State Lease No. 18804, as amended having Coordinates of X = 2,012,931.71 and Y = 692,457.17; thence East 5,306.64 feet along the south boundary of said State Lease No. 18804 to its Southeast corner and the Southwest corner of State Lease No. 21107 having Coordinates of X = 2,018,238.35 and Y = 692,457.17; thence North 89 degrees 59 minutes 59 seconds East approximately 7,253.20 feet along the south boundary of said State Lease No. 21107 to its Southeast corner having Coordinates of X = 2,025,491.55 and Y = 692,457.19; thence South 89 degrees 59 minutes 59 seconds East approximately 5,920.16 feet to the point of beginning, containing approximately **1839 acres**, all as more particularly outlined on a plat on file in the Office of Mineral Resources, Department of Natural Resources. All bearings, distances and coordinates are based on Louisiana Coordinate System of 1927, (North or South Zone), where applicable.

NOTE: The above description of the Tract nominated for lease has been provided and corrected, where required, exclusively by the nomination party. Any mineral lease selected from this Tract and awarded by the Louisiana State Mineral and Energy Board shall be without warranty of any kind, either express, implied, or statutory, including, but not limited to, the implied warranties of merchantability and fitness for a particular purpose. Should the mineral lease awarded by the Louisiana State Mineral and Energy Board be subsequently modified, cancelled or abrogated due to the existence of conflicting leases, operating agreements, private claims or other future obligations or conditions which may affect all or any portion of the leased Tract, it shall not relieve the Lessee of the obligation to pay any bonus due thereon to the Louisiana State Mineral and Energy Board, nor shall the Louisiana State Mineral and Energy Board be obligated to refund any consideration paid by the Lessor prior to such modification, cancellation, or abrogation, including, but not limited to, bonuses, rentals and royalties.

Applicant: LESLIE M. COOPER

Bidder	Cash Payment	Price/Acre	Rental	Oil	Gas	Other

**Legend**  
14110003  
Active\_Leases

EAST BATON ROUGE

P.O.B.

SL 21107

SL 18804

MISSISSIPPI RIVER

WEST BATON ROUGE

0 3,500 Feet



**TRACT 44095 - Plaquemines Parish, Louisiana**

All of the lands now or formerly constituting the beds and bottoms of all water bodies of every nature and description as to which title is vested in the State of Louisiana, together with all islands arising therein and other lands formed by accretion or by reliction, where allowed by law, excepting tax adjudicated lands, and not presently under mineral lease on November 12, 2014, situated in Plaquemines Parish, Louisiana, and more particularly described as follows: Beginning at a point on the West boundary of State Lease No. 2485, as amended, having Coordinates of X = 2,652,240.00 and Y = 161,600.00; thence South 30 degrees 00 minutes 00 seconds West 10,288.31 feet along the West boundary of said State Lease No. 2485 to a point of intersection with the East boundary of State Lease No. 20484 having Coordinates of X = 2,647,175.75 and Y = 152,828.46; thence along the boundary of said State Lease No. 20484 the following courses: North 02 degrees 08 minutes 10 seconds West 5,246.73 feet to a point having Coordinates of X = 2,646,980.17 and Y = 158,071.54, South 70 degrees 14 minutes 59 seconds West 766.19 feet to a point having Coordinates of X = 2,646,259.06 and Y = 157,812.63, North 01 degrees 56 minutes 53 seconds West 2,074.24 feet to a point having Coordinates of X = 2,646,188.55 and Y = 159,885.68 and South 71 degrees 08 minutes 49 seconds West approximately 2,768 feet to a point on the East boundary of State Lease No. 451, as amended; thence Northerly approximately 3,504 feet along the East boundary of said State Lease No. 451 to the Southwest corner of State Lease No. 2484; thence Easterly approximately 1,660 feet along the Southerly boundary of said State Lease No. 2484 to a point of intersection with the Northwest corner of State Lease No. 20974; thence along the boundaries of said State Lease No. 20974 the following courses: Southerly approximately 1,278 feet to a point having Coordinates of X = 2,645,138.97 and Y = 161,216.73, East 3,383.63 feet to a point having Coordinates of X = 2,648,522.60 and Y = 161,216.73 and Northerly approximately 1,278 feet to a point of intersection with the Southern boundary of said State Lease No. 2484; thence Easterly approximately 2,168 feet to a point of intersection with the West boundary of said State Lease No. 2485; thence South 60 degrees 00 minutes 00 seconds East approximately 1,788 feet to the point of beginning, **LESS AND EXCEPT** that portion, if any, of State Lease No. 451, State Lease No. 2484 and State Lease No. 2485, as amended that may lie within the above described tract, containing approximately **789 acres**, all as more particularly outlined on a plat on file in the Office of Mineral Resources, Department of Natural Resources. All bearings, distances and coordinates are based on Louisiana Coordinate System of 1927, (North or South Zone), where applicable.

NOTE: The above description of the Tract nominated for lease has been provided and corrected, where required, exclusively by the nomination party. Any mineral lease selected from this Tract and awarded by the Louisiana State Mineral and Energy Board shall be without warranty of any kind, either express, implied, or statutory, including, but not limited to, the implied warranties of merchantability and fitness for a particular purpose. Should the mineral lease awarded by the Louisiana State Mineral



and Energy Board be subsequently modified, cancelled or abrogated due to the existence of conflicting leases, operating agreements, private claims or other future obligations or conditions which may affect all or any portion of the leased Tract, it shall not relieve the Lessee of the obligation to pay any bonus due thereon to the Louisiana State Mineral and Energy Board, nor shall the Louisiana State Mineral and Energy Board be obligated to refund any consideration paid by the Lessor prior to such modification, cancellation, or abrogation, including, but not limited to, bonuses, rentals and royalties.

NOTE: The State of Louisiana does hereby reserve, and this lease shall be subject to, the imprescriptible right of surface use in the nature of a servitude in favor of the Department of Natural Resources, including its Offices and Commissions, for the sole purpose of implementing, constructing, servicing and maintaining approved coastal zone management and/or restoration projects. Utilization of any and all rights derived under this lease by the mineral lessee, its agents, successors or assigns, shall not interfere with nor hinder the reasonable surface use by the Department of Natural Resources, its Offices or Commissions, as herein above reserved.

Applicant: MARK A O'NEAL & ASSOCIATES, INC.

Bidder	Cash Payment	Price/Acre	Rental	Oil	Gas	Other

**Legend**

14110007



Freeze Statute



State Claim Waterbottoms



Active\_Leases



0 2,000 Feet



PLAQUEMINES

P.O.B.

SL 2484

SL 20974

SL 2485

MISSISSIPPI RIVER

SL 20484

GULF OF MEXICO

SL 451