

**TRACT 41178 - Iberia Parish, Louisiana**

All of the lands now or formerly constituting the beds and bottoms of all water bodies of every nature and description as to which title is vested in the State of Louisiana, together with all islands arising therein and other lands formed by accretion or by reliction, where allowed by law, excepting tax adjudicated lands, and not presently under mineral lease on November 12, 2009, situated in Iberia Parish, Louisiana, and more particularly described as follows: Beginning at a point having Coordinates of X = 1,875,502.26 and Y = 344,508.77; thence East 10,921.94 feet to the Northwest corner of State Lease No. 11279, as amended, having Coordinates of X = 1,886,424.20 and Y = 344,508.77; thence along the boundary of said State Lease No. 11279 the following courses: South 2,868.15 feet and South 89 degrees 45 minutes 52 seconds East 2,425.82 feet to its Southeast corner, also being the Northernmost Southwest corner of State Lease No. 11282 having Coordinates of X = 1,888,850.00 and Y = 341,630.65; thence along the boundary of said State Lease No. 11282 the following courses: South 89 degrees 44 minutes 04 seconds East 140.27 feet; South 00 degrees 14 minutes 06 seconds West 3,554.03 feet and East 1,024.31 feet to its Southeast corner having Coordinates of X = 1,890,000.00 and Y = 338,076.00; thence South 5,238.75 feet to a point having Coordinates of X = 1,890,000.00 and Y = 332,837.25; thence West 2,795.70 feet to the Northeast corner of State Lease No. 2276, as amended, having Coordinates of X = 1,887,204.30 and Y = 332,837.25; thence North 89 degrees 45 minutes 52 seconds West 1,835.28 feet along the North boundary of said State Lease No. 2276 to the Southeast corner of the Northern portion of Operating Agreement AO 0302 having Coordinates of X = 1,885,369.04 and Y = 332,844.80; thence along the boundary of said Operating Agreement AO 0302 the following courses: North 38 degrees 53 minutes 04 seconds West 173.69 feet; North 53 degrees 44 minutes 46 seconds West 372.02 feet; North 64 degrees 26 minutes 24 seconds West 509.90 feet and North 73 degrees 18 minutes 03 seconds West 75.72 feet to its Northwest corner, also being a point on the East boundary of State Lease No. 19139 having Coordinates of X = 1,884,427.48 and Y = 333,441.76; thence along the boundary of said State Lease No. 19139 the following courses: North 00 degrees 14 minutes 08 seconds East 3,383.28 feet; North 00 degrees 13 minutes 52 seconds East 1,935.25 feet; West 2,037.23 feet and North 89 degrees 45 minutes 52 seconds West 3,865.87 feet to its Northwest corner, also being a point on the East boundary of State Lease No. 1703, as amended, having Coordinates of X = 1,878,546.15 and Y = 338,776.13; thence along the boundary of said State Lease No. 1703 the following courses: North 00 degrees 14 minutes 08 seconds East 353.40 feet and North 89 degrees 45 minutes 52 seconds West 3,045.37 feet to its Northwest corner having Coordinates of X = 1,875,502.26 and Y = 339,142.05; thence North 5,366.72 feet to the point of beginning, containing approximately **2,315.62 acres**, all as more particularly outlined on a plat on file in the Office of Mineral Resources, Department of Natural Resources. All bearings, distances and coordinates are based on Louisiana Coordinate System of 1927, (North or South Zone), where applicable.

NOTE: The above description of the Tract nominated for lease has been provided and corrected, where required, exclusively by the nomination party. Any mineral lease selected from this Tract and awarded by the Louisiana State Mineral Board shall be without warranty of any kind, either express, implied, or statutory, including, but not limited to, the implied warranties of merchantability and fitness for a particular purpose. Should the mineral lease awarded by the Louisiana State Mineral Board be subsequently modified, cancelled or abrogated due to the existence of conflicting leases, operating agreements, private claims or other future obligations or conditions which may affect all or any portion of the leased Tract, it shall not relieve the Lessee of the obligation to pay any bonus due thereon to the Louisiana State Mineral Board, nor shall the Louisiana State Mineral Board be obligated to refund any consideration paid by the Lessor prior to such modification, cancellation, or abrogation, including, but not limited to, bonuses, rentals and royalties.

NOTE: The State of Louisiana does hereby reserve, and this lease shall be subject to, the imprescriptible right of surface use in the nature of a servitude in favor of the Department of Natural Resources, including its Offices and Commissions, for the sole purpose of implementing, constructing, servicing and maintaining approved coastal zone management and/or restoration projects. Utilization of any and all rights derived under this lease by the mineral lessee, its agents, successors or assigns, shall not interfere with nor hinder the reasonable surface use by the Department of Natural Resources, its Offices or Commissions, as herein above reserved.

NOTE: The Department of Wildlife and Fisheries has designated certain areas in the coastal waters of the State of Louisiana as Oyster Seed Bed Areas. The exact location of those Seed Bed Areas must be obtained from the Department of Wildlife and Fisheries and any work done under a mineral lease from the State of Louisiana may necessarily be conducted in conformity with the rules and regulations promulgated by the said Department of Wildlife and Fisheries for Oyster Seed Bed Areas.

NOTE: All or a portion of this Tract lies within one nautical mile of the boundary of the Russell Sage or Marsh Island Wildlife Refuge and Game Preserve. Any activities connected with this lease conducted within this Tract which may pose potential environmental impacts to the said Wildlife Refuge and Game Preserve should be coordinated with the Louisiana Department of Wildlife and Fisheries.

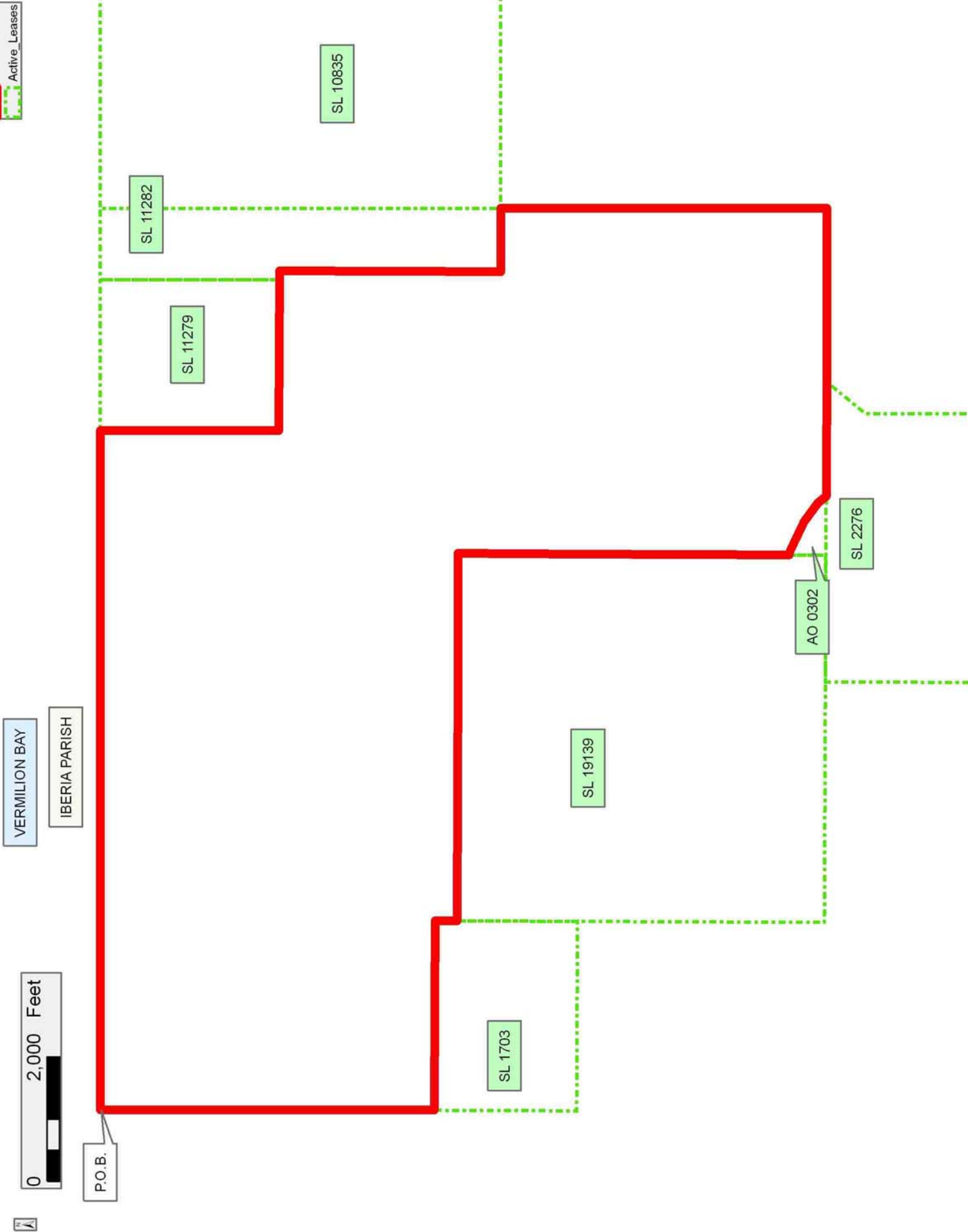
Applicant: BAY CITY ENERGY GROUP, INC.

| Bidder | Cash<br>Payment | Price/<br>Acre | Rental | Oil | Gas | Other |
|--------|-----------------|----------------|--------|-----|-----|-------|
|        |                 |                |        |     |     |       |
|        |                 |                |        |     |     |       |
|        |                 |                |        |     |     |       |
|        |                 |                |        |     |     |       |

Legend

09110026

Active\_Leases



**TRACT 41179 - Iberia and St. Mary Parishes, Louisiana**

All of the lands now or formerly constituting the beds and bottoms of all water bodies of every nature and description as to which title is vested in the State of Louisiana, together with all islands arising therein and other lands formed by accretion or by reliction, where allowed by law, excepting tax adjudicated lands, and not presently under mineral lease on November 12, 2009, situated in Iberia and St. Mary Parishes, Louisiana, and more particularly described as follows: Beginning at the Southwest corner of State Lease No. 10835, as amended, having Coordinates of X = 1,890,000.00 and Y = 338,076.00; thence East 4,340.72 feet along the South boundary of said State Lease No. 10835 to its Southeast corner having Coordinates of X = 1,894,340.72 and Y = 338,076.00; thence South 14,765.00 feet to a point having Coordinates of X = 1,894,340.72 and Y = 323,311.00; thence West approximately 12,115 feet to a point on the East boundary of State Lease No. 3317, as amended, having a Coordinate of Y = 323,311.00; thence Northerly approximately 320 feet along the Eastern boundary of said State Lease No. 3317 to a point on the boundary of the Southern portion of Operating Agreement AO 0302; thence along the boundary of said Operating Agreement AO 0302 the following courses: North 81 degrees 21 minutes 26 seconds East approximately 526 feet; North 75 degrees 57 minutes 50 seconds East 453.54 feet; North 59 degrees 37 minutes 15 seconds East 336.15 feet; North 52 degrees 51 minutes 12 seconds East 414.00 feet; North 33 degrees 06 minutes 41 seconds East 549.18 feet; North 24 degrees 46 minutes 31 seconds East 572.71 feet; North 14 degrees 02 minutes 10 seconds East 536.00 feet and North 06 degrees 00 minutes 32 seconds East 701.97 feet to its Northeast corner, also being a point on the South boundary of State Lease No. 2276, as amended, having Coordinates of X = 1,884,553.50 and Y = 326,438.11; thence along the boundary of said State Lease No. 2276 the following courses: South 89 degrees 45 minutes 52 seconds East 790.01 feet; North 3,458.33 feet; East 1,356.50 feet; North 2,326.80 feet and North 39 degrees 14 minutes 55 seconds East 797.08 feet to its Northeast corner having Coordinates of X = 1,887,204.30 and Y = 332,837.25; thence East 2,795.70 feet to a point having Coordinates of X = 1,890,000.00 and Y = 332,837.25; thence North 5,238.75 feet to the point of beginning, **LESS AND EXCEPT** that portion, if any, of State Lease No. 3317, as amended, that may lie within the above described tract, containing approximately **2,498 acres**, all as more particularly outlined on a plat on file in the Office of Mineral Resources, Department of Natural Resources. All bearings, distances and coordinates are based on Louisiana Coordinate System of 1927, (North or South Zone), where applicable.

NOTE: The above description of the Tract nominated for lease has been provided and corrected, where required, exclusively by the nomination party. Any mineral lease selected from this Tract and awarded by the Louisiana State Mineral Board shall be without warranty of any kind, either express, implied, or statutory, including, but not limited to, the implied warranties of merchantability and fitness for a particular purpose. Should the mineral lease awarded by the Louisiana State Mineral Board be subsequently modified, cancelled or abrogated due to the

existence of conflicting leases, operating agreements, private claims or other future obligations or conditions which may affect all or any portion of the leased Tract, it shall not relieve the Lessee of the obligation to pay any bonus due thereon to the Louisiana State Mineral Board, nor shall the Louisiana State Mineral Board be obligated to refund any consideration paid by the Lessor prior to such modification, cancellation, or abrogation, including, but not limited to, bonuses, rentals and royalties.

NOTE: The above described tract may be in the vicinity of existing shell reefs where drilling and dredging operations must be conducted in strict conformity with the regulations adopted by the Louisiana Department of Wildlife and Fisheries and/or the U.S. Corps of Engineers, U.S. Army.

NOTE: The State of Louisiana does hereby reserve, and this lease shall be subject to, the imprescriptible right of surface use in the nature of a servitude in favor of the Department of Natural Resources, including its Offices and Commissions, for the sole purpose of implementing, constructing, servicing and maintaining approved coastal zone management and/or restoration projects. Utilization of any and all rights derived under this lease by the mineral lessee, its agents, successors or assigns, shall not interfere with nor hinder the reasonable surface use by the Department of Natural Resources, its Offices or Commissions, as herein above reserved.

NOTE: The Department of Wildlife and Fisheries has designated certain areas in the coastal waters of the State of Louisiana as Oyster Seed Bed Areas. The exact location of those Seed Bed Areas must be obtained from the Department of Wildlife and Fisheries and any work done under a mineral lease from the State of Louisiana may necessarily be conducted in conformity with the rules and regulations promulgated by the said Department of Wildlife and Fisheries for Oyster Seed Bed Areas.

NOTE: All or a portion of this Tract lies within one nautical mile of the boundary of the Russell Sage or Marsh Island Wildlife Refuge and Game Preserve. Any activities connected with this lease conducted within this Tract which may pose potential environmental impacts to the said Wildlife Refuge and Game Preserve should be coordinated with the Louisiana Department of Wildlife and Fisheries.

Applicant: BAY CITY ENERGY GROUP, INC.

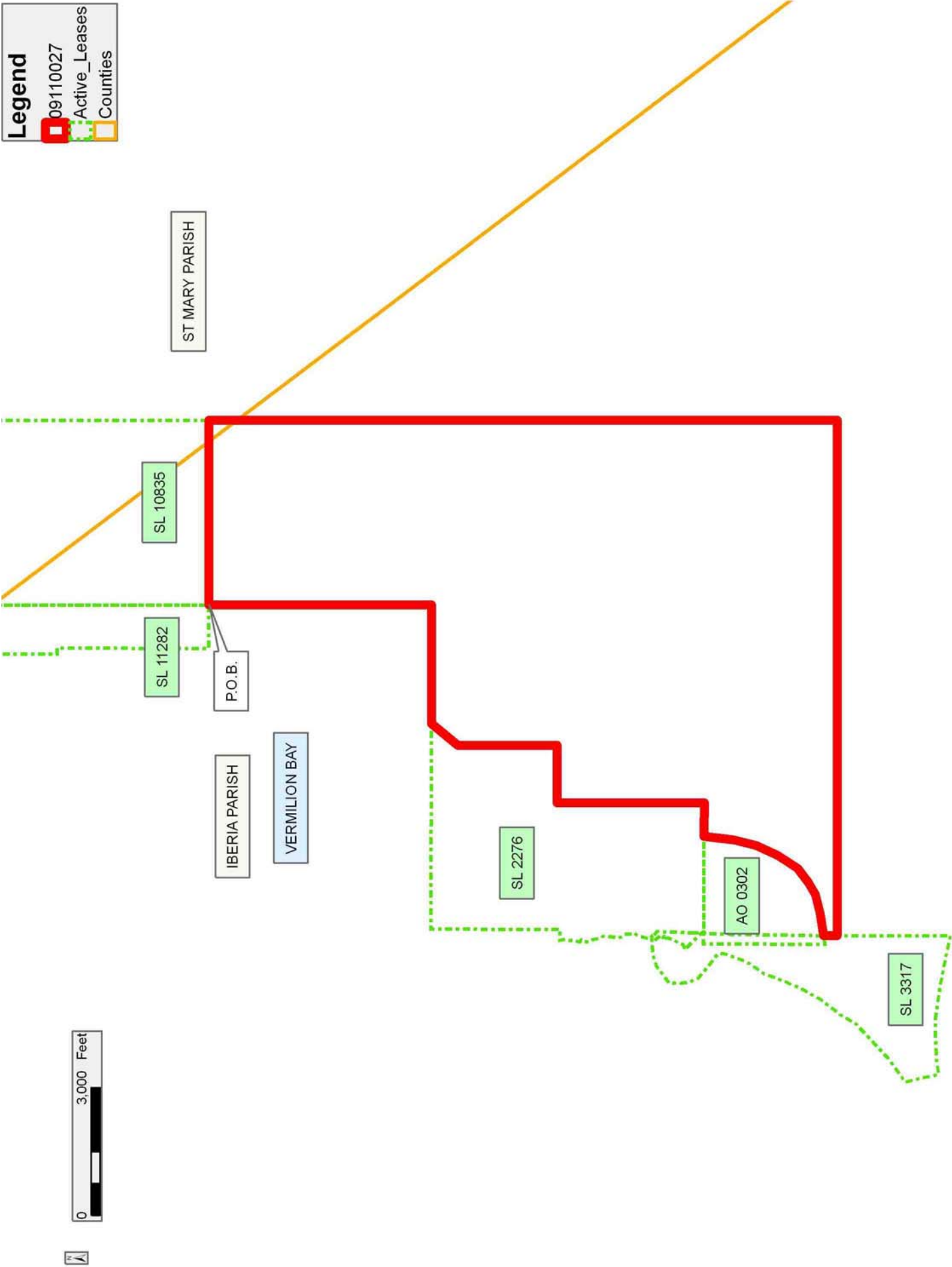
| Bidder | Cash<br>Payment | Price/<br>Acre | Rental | Oil | Gas | Other |
|--------|-----------------|----------------|--------|-----|-----|-------|
|        |                 |                |        |     |     |       |
|        |                 |                |        |     |     |       |
|        |                 |                |        |     |     |       |
|        |                 |                |        |     |     |       |

Legend

09110027

Active\_Leases

Counties





**TRACT 41180 - Terrebonne Parish, Louisiana**

All of the lands now or formerly constituting the beds and bottoms of all water bodies of every nature and description as to which title is vested in the State of Louisiana, together with all islands arising therein and other lands formed by accretion or by reliction, where allowed by law, excepting tax adjudicated lands, and not presently under mineral lease on November 12, 2009, situated in Terrebonne Parish, Louisiana, and more particularly described as follows: Beginning at the Northwest corner of State Lease No. 19974 having Coordinates of X = 2,153,899.71 and Y = 273,900.73; thence South 3,430.00 feet along the West boundary of said State Lease No. 19974 to its Southwest corner having Coordinates of X = 2,153,899.71 and Y = 270,470.73; thence West 577.00 feet to a point having Coordinates of X = 2,153,322.71 and Y = 270,470.73; thence South 1,665.73 feet to a point having Coordinates of X = 2,153,322.71 and Y = 268,805.00; thence West 8,083.10 feet to a point having Coordinates of X = 2,145,239.61 and Y = 268,805.00; thence North 00 degrees 57 minutes 32 seconds West 5,096.44 feet to a point having Coordinates of X = 2,145,154.32 and Y = 273,900.73; thence East 8,745.39 feet to the point of beginning, containing approximately **350 acres**, all as more particularly outlined on a plat on file in the Office of Mineral Resources, Department of Natural Resources. All bearings, distances and coordinates are based on Louisiana Coordinate System of 1927, (North or South Zone), where applicable.

NOTE: The above description of the Tract nominated for lease has been provided and corrected, where required, exclusively by the nomination party. Any mineral lease selected from this Tract and awarded by the Louisiana State Mineral Board shall be without warranty of any kind, either express, implied, or statutory, including, but not limited to, the implied warranties of merchantability and fitness for a particular purpose. Should the mineral lease awarded by the Louisiana State Mineral Board be subsequently modified, cancelled or abrogated due to the existence of conflicting leases, operating agreements, private claims or other future obligations or conditions which may affect all or any portion of the leased Tract, it shall not relieve the Lessee of the obligation to pay any bonus due thereon to the Louisiana State Mineral Board, nor shall the Louisiana State Mineral Board be obligated to refund any consideration paid by the Lessor prior to such modification, cancellation, or abrogation, including, but not limited to, bonuses, rentals and royalties.

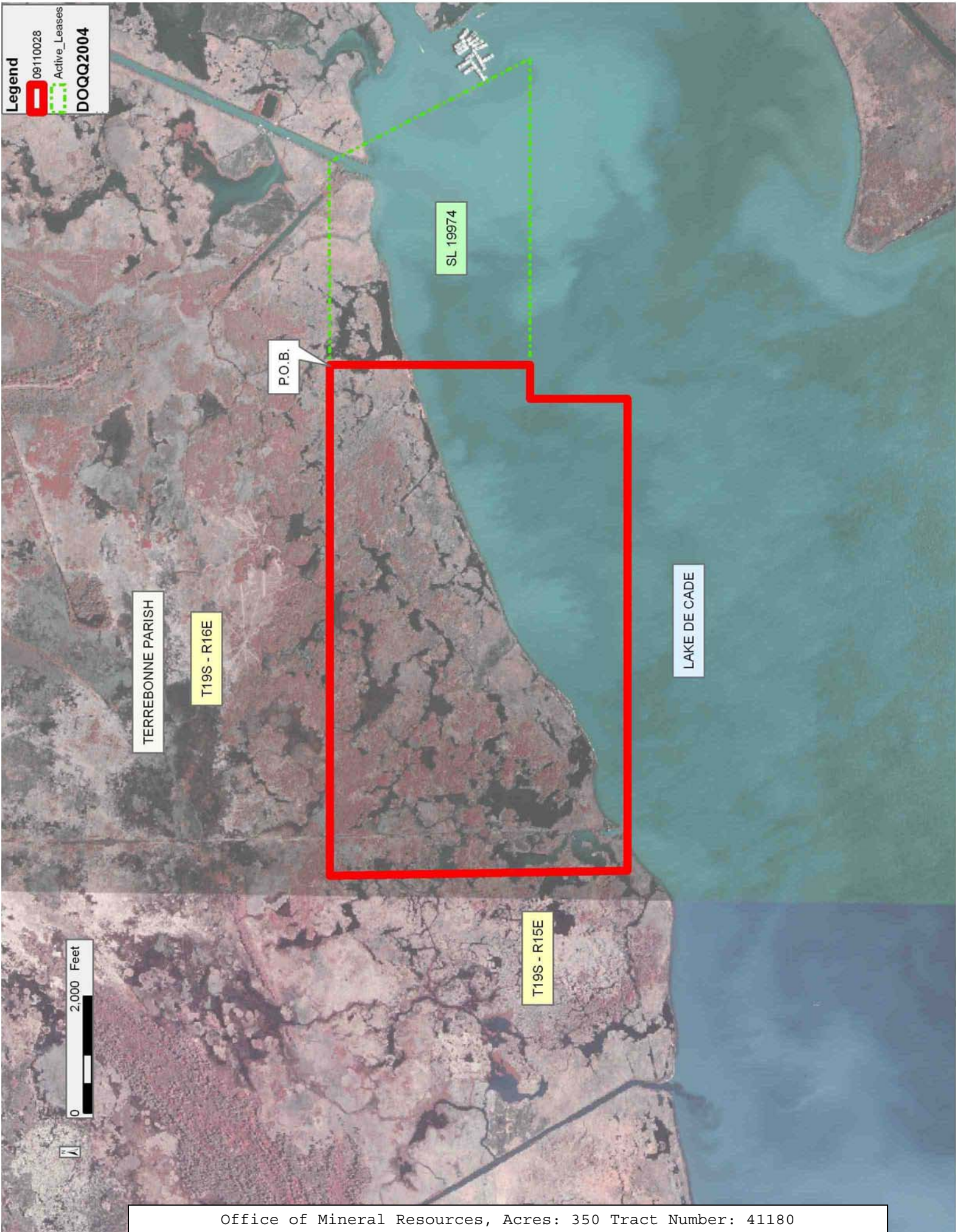
NOTE: The State of Louisiana does hereby reserve, and this lease shall be subject to, the imprescriptible right of surface use in the nature of a servitude in favor of the Department of Natural Resources, including its Offices and Commissions, for the sole purpose of implementing, constructing, servicing and maintaining approved coastal zone management and/or restoration projects. Utilization of any and all rights derived under this lease by the mineral lessee, its agents, successors or assigns, shall not interfere with nor hinder the reasonable surface use by the

Department of Natural Resources, its Offices or Commissions, as herein above reserved.

Applicant: CYPRESS ENERGY CORPORATION

| Bidder | Cash<br>Payment | Price/<br>Acre | Rental | Oil | Gas | Other |
|--------|-----------------|----------------|--------|-----|-----|-------|
|        |                 |                |        |     |     |       |
|        |                 |                |        |     |     |       |
|        |                 |                |        |     |     |       |
|        |                 |                |        |     |     |       |

**Legend**  
091110028  
Active\_Leases  
DOQQ2004



**TRACT 41181 - Terrebonne Parish, Louisiana**

All of the lands now or formerly constituting the beds and bottoms of all water bodies of every nature and description as to which title is vested in the State of Louisiana, together with all islands arising therein and other lands formed by accretion or by reliction, where allowed by law, excepting tax adjudicated lands, and not presently under mineral lease on November 12, 2009, situated in Terrebonne Parish, Louisiana, and more particularly described as follows: Beginning at the Southeast corner of State Lease No. 19974 having Coordinates of X = 2,159,149.71 and Y = 270,470.73; thence South 3,550.73 feet to a point having Coordinates of X = 2,159,149.71 and Y = 266,920.00; thence West 2,269.71 feet to the Northeast corner of State Lease No. 17174 having Coordinates of X = 2,156,880.00 and Y = 266,920.00; thence West 3,557.29 feet along the North boundary of said State Lease No. 17174 to a point having Coordinates of X = 2,153,322.71 and Y = 266,920.00; thence North 3,550.73 feet to a point having Coordinates of X = 2,153,322.71 and Y = 270,470.73; thence East 577.00 feet to the Southwest corner of said State Lease No. 19974 having Coordinates of X = 2,153,899.71 and Y = 270,470.73; thence East 5,250.00 feet along the South boundary of said State Lease No. 19974 to the point of beginning, containing approximately **474.98 acres**, all as more particularly outlined on a plat on file in the Office of Mineral Resources, Department of Natural Resources. All bearings, distances and coordinates are based on Louisiana Coordinate System of 1927, (North or South Zone), where applicable.

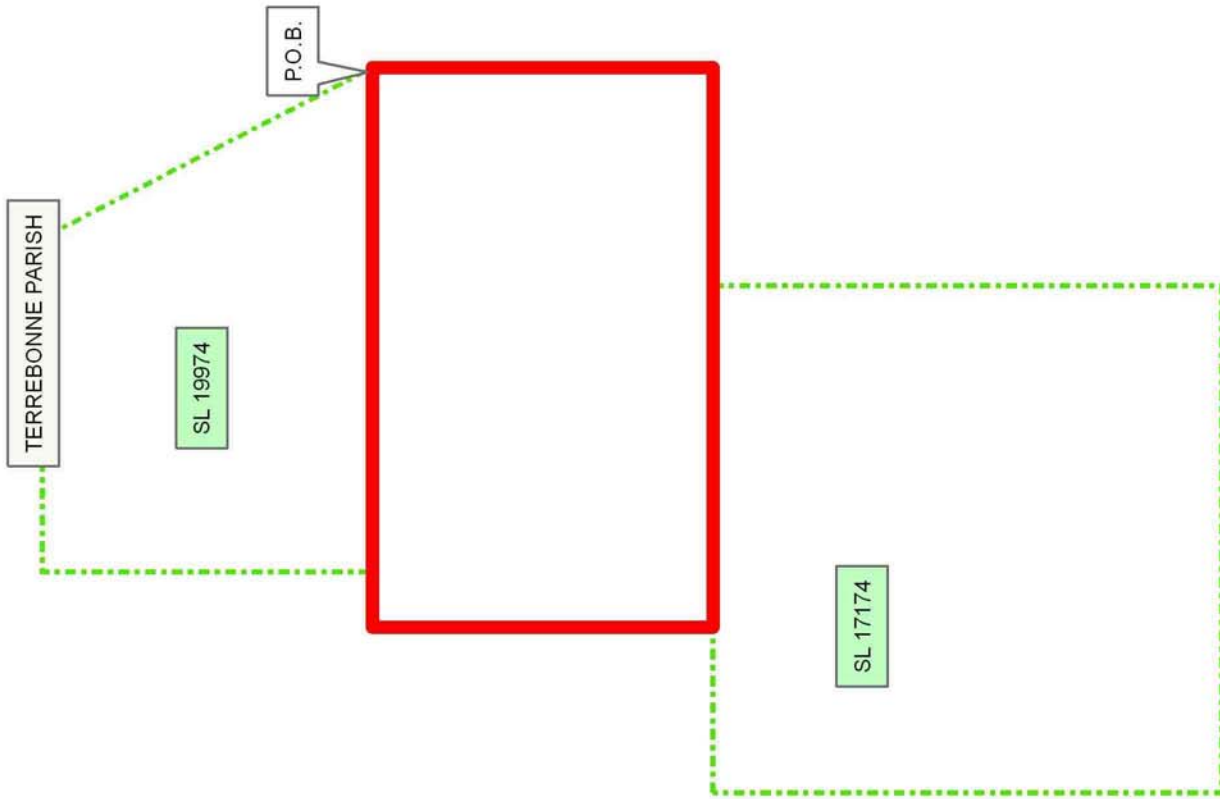
NOTE: The above description of the Tract nominated for lease has been provided and corrected, where required, exclusively by the nomination party. Any mineral lease selected from this Tract and awarded by the Louisiana State Mineral Board shall be without warranty of any kind, either express, implied, or statutory, including, but not limited to, the implied warranties of merchantability and fitness for a particular purpose. Should the mineral lease awarded by the Louisiana State Mineral Board be subsequently modified, cancelled or abrogated due to the existence of conflicting leases, operating agreements, private claims or other future obligations or conditions which may affect all or any portion of the leased Tract, it shall not relieve the Lessee of the obligation to pay any bonus due thereon to the Louisiana State Mineral Board, nor shall the Louisiana State Mineral Board be obligated to refund any consideration paid by the Lessor prior to such modification, cancellation, or abrogation, including, but not limited to, bonuses, rentals and royalties.

NOTE: The State of Louisiana does hereby reserve, and this lease shall be subject to, the imprescriptible right of surface use in the nature of a servitude in favor of the Department of Natural Resources, including its Offices and Commissions, for the sole purpose of implementing, constructing, servicing and maintaining approved coastal zone management and/or restoration projects. Utilization of any and all rights derived under this lease by the mineral lessee, its agents, successors or assigns, shall not interfere with nor hinder the reasonable surface use by the

Department of Natural Resources, its Offices or Commissions, as herein above reserved.

Applicant: CYPRESS ENERGY CORPORATION

| Bidder | Cash<br>Payment | Price/<br>Acre | Rental | Oil | Gas | Other |
|--------|-----------------|----------------|--------|-----|-----|-------|
|        |                 |                |        |     |     |       |
|        |                 |                |        |     |     |       |
|        |                 |                |        |     |     |       |
|        |                 |                |        |     |     |       |





**TRACT 41182 - Terrebonne Parish, Louisiana**

All of the lands now or formerly constituting the beds and bottoms of all water bodies of every nature and description as to which title is vested in the State of Louisiana, together with all islands arising therein and other lands formed by accretion or by reliction, where allowed by law, excepting tax adjudicated lands, and not presently under mineral lease on November 12, 2009, situated in Terrebonne Parish, Louisiana, and more particularly described as follows: Beginning at the Northwest corner of State Lease No. 17174 having Coordinates of X = 2,151,600.00 and Y = 266,920.00; thence South 1,172.17 feet along the West boundary of said State Lease No. 17174 to a point having Coordinates of X = 2,151,600.00 and Y = 265,747.83; thence South 89 degrees 05 minutes 49 seconds West 6,308.34 feet to a point having Coordinates of X = 2,145,292.44 and Y = 265,648.42; thence North 00 degrees 57 minutes 32 seconds West 3,157.02 feet to a point having Coordinates of X = 2,145,239.61 and Y = 268,805.00; thence East 8,083.10 feet to a point having Coordinates of X = 2,153,322.71 and Y = 268,805.00; thence South 1,885.00 feet to a point on the North boundary of said State Lease No. 17174 having Coordinates of X = 2,153,322.71 and Y = 266,920.00; thence West 1,722.71 feet along the North boundary of said State Lease No. 17174 to the point of beginning, containing approximately **525 acres**, all as more particularly outlined on a plat on file in the Office of Mineral Resources, Department of Natural Resources. All bearings, distances and coordinates are based on Louisiana Coordinate System of 1927, (North or South Zone), where applicable.

NOTE: The above description of the Tract nominated for lease has been provided and corrected, where required, exclusively by the nomination party. Any mineral lease selected from this Tract and awarded by the Louisiana State Mineral Board shall be without warranty of any kind, either express, implied, or statutory, including, but not limited to, the implied warranties of merchantability and fitness for a particular purpose. Should the mineral lease awarded by the Louisiana State Mineral Board be subsequently modified, cancelled or abrogated due to the existence of conflicting leases, operating agreements, private claims or other future obligations or conditions which may affect all or any portion of the leased Tract, it shall not relieve the Lessee of the obligation to pay any bonus due thereon to the Louisiana State Mineral Board, nor shall the Louisiana State Mineral Board be obligated to refund any consideration paid by the Lessor prior to such modification, cancellation, or abrogation, including, but not limited to, bonuses, rentals and royalties.

NOTE: The State of Louisiana does hereby reserve, and this lease shall be subject to, the imprescriptible right of surface use in the nature of a servitude in favor of the Department of Natural Resources, including its Offices and Commissions, for the sole purpose of implementing, constructing, servicing and maintaining approved coastal zone management and/or restoration projects. Utilization of any and all rights derived under this lease by the mineral lessee, its agents, successors or assigns, shall not interfere with nor hinder the reasonable surface use by the

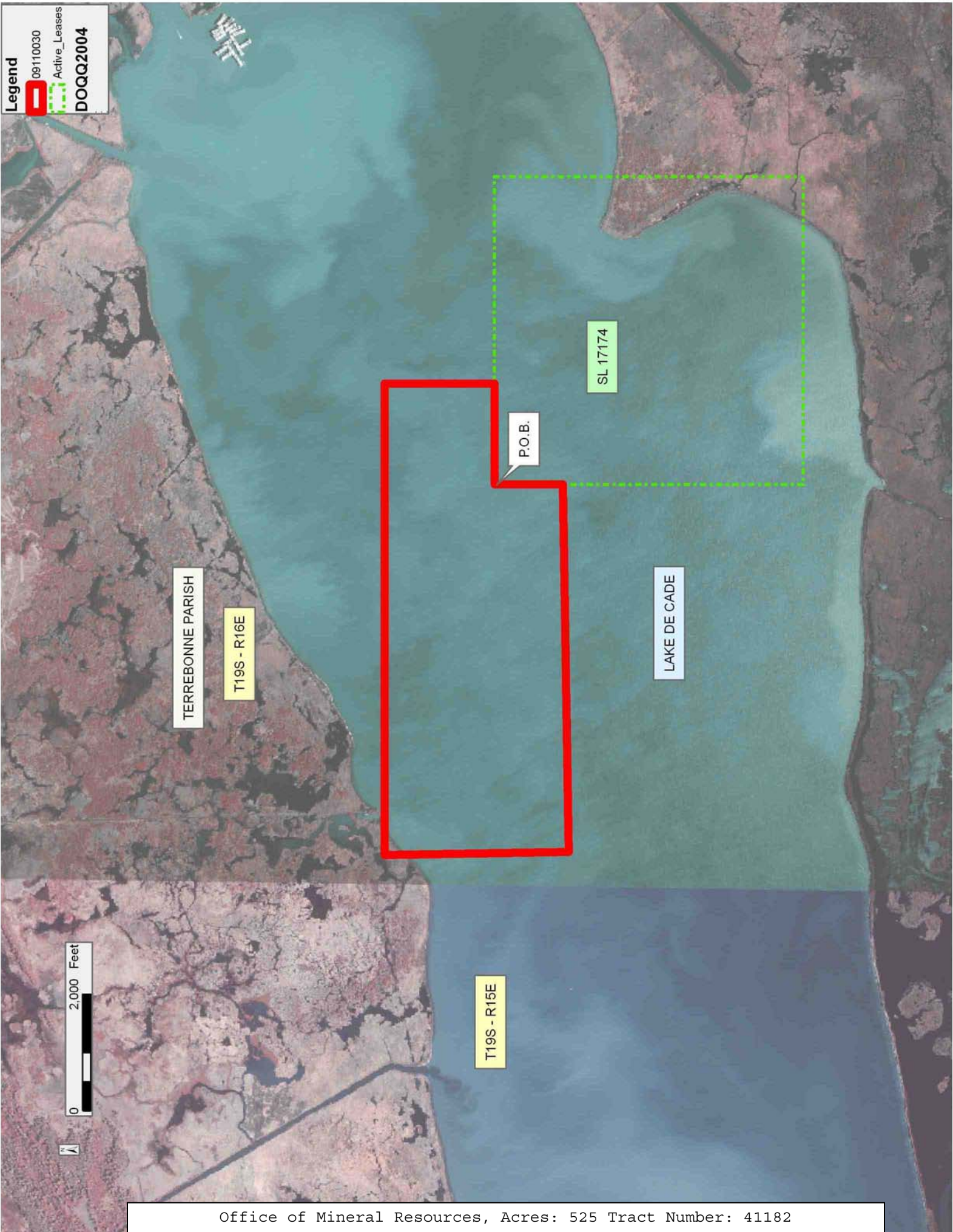
Department of Natural Resources, its Offices or Commissions, as herein above reserved.

Applicant: CYPRESS ENERGY CORPORATION

| Bidder | Cash<br>Payment | Price/<br>Acre | Rental | Oil | Gas | Other |
|--------|-----------------|----------------|--------|-----|-----|-------|
|        |                 |                |        |     |     |       |
|        |                 |                |        |     |     |       |
|        |                 |                |        |     |     |       |
|        |                 |                |        |     |     |       |



**Legend**  
09110030  
Active\_Leases  
DOQQ2004



**TRACT 41183 - Terrebonne Parish, Louisiana**

All of the lands now or formerly constituting the beds and bottoms of all water bodies of every nature and description as to which title is vested in the State of Louisiana, together with all islands arising therein and other lands formed by accretion or by reliction, where allowed by law, excepting tax adjudicated lands, and not presently under mineral lease on November 12, 2009, situated in Terrebonne Parish, Louisiana, and more particularly described as follows: Beginning at the Southwest corner of State Lease No. 17174 having Coordinates of X = 2,151,600.00 and Y = 261,620.00; thence West 6,240.14 feet to a point having Coordinates of X = 2,145,359.86 and Y = 261,620.00; thence North 00 degrees 57 minutes 32 seconds West 4,028.98 feet to a point having Coordinates of X = 2,145,292.44 and Y = 265,648.42; thence North 89 degrees 05 minutes 49 seconds East 6,308.34 feet to a point on the West Boundary of said State Lease No. 17174 having Coordinates of X = 2,151,600.00 and Y = 265,747.83; thence South 4,127.83 feet along the West boundary of said State Lease No. 17174 to the point of beginning, containing approximately **587.40 acres**, all as more particularly outlined on a plat on file in the Office of Mineral Resources, Department of Natural Resources. All bearings, distances and coordinates are based on Louisiana Coordinate System of 1927, (North or South Zone), where applicable.

NOTE: The above description of the Tract nominated for lease has been provided and corrected, where required, exclusively by the nomination party. Any mineral lease selected from this Tract and awarded by the Louisiana State Mineral Board shall be without warranty of any kind, either express, implied, or statutory, including, but not limited to, the implied warranties of merchantability and fitness for a particular purpose. Should the mineral lease awarded by the Louisiana State Mineral Board be subsequently modified, cancelled or abrogated due to the existence of conflicting leases, operating agreements, private claims or other future obligations or conditions which may affect all or any portion of the leased Tract, it shall not relieve the Lessee of the obligation to pay any bonus due thereon to the Louisiana State Mineral Board, nor shall the Louisiana State Mineral Board be obligated to refund any consideration paid by the Lessor prior to such modification, cancellation, or abrogation, including, but not limited to, bonuses, rentals and royalties.

NOTE: The State of Louisiana does hereby reserve, and this lease shall be subject to, the imprescriptible right of surface use in the nature of a servitude in favor of the Department of Natural Resources, including its Offices and Commissions, for the sole purpose of implementing, constructing, servicing and maintaining approved coastal zone management and/or restoration projects. Utilization of any and all rights derived under this lease by the mineral lessee, its agents, successors or assigns, shall not interfere with nor hinder the reasonable surface use by the Department of Natural Resources, its Offices or Commissions, as herein above reserved.

Applicant: CYPRESS ENERGY CORPORATION

| Bidder | Cash<br>Payment | Price/<br>Acre | Rental | Oil | Gas | Other |
|--------|-----------------|----------------|--------|-----|-----|-------|
|        |                 |                |        |     |     |       |
|        |                 |                |        |     |     |       |
|        |                 |                |        |     |     |       |
|        |                 |                |        |     |     |       |

**Legend**

09110031  
Active\_Leases



T19S - R15E

LAKE DE CADE

TERREBONNE PARISH

SL 17174

P.O.B.

T19S - R16E

**TRACT 41184 - Portion of Block 6, West Delta Area, Plaquemines Parish, Louisiana**

All of the lands now or formerly constituting the beds and bottoms of all water bodies of every nature and description as to which title is vested in the State of Louisiana, together with all islands arising therein and other lands formed by accretion or by reliction, where allowed by law, excepting tax adjudicated lands, and not presently under mineral lease on November 12, 2009, situated in Plaquemines Parish, Louisiana, and more particularly described as follows: Beginning at a point having Coordinates of X = 2,538,872.00 and Y = 224,144.40; thence North approximately 7,934 feet to a point on the Southwest boundary of State Lease No. 3011, as amended, having a Coordinate of X = 2,538,872.00; thence South 53 degrees 08 minutes 25 seconds East approximately 5,882 feet along the Southwest boundary of said State Lease No. 3011 to its most Southern Southwest corner; thence Easterly approximately 4,040 feet along the South boundary of said State Lease No. 3011 to its Southeast corner; thence Southerly approximately 500 feet to a point having Coordinates of X = 2,547,614.77 and Y = 228,215.00; thence South 9,152.76 feet to a point having Coordinates of X = 2,547,614.77 and Y = 219,062.24; thence North 59 degrees 49 minutes 50 seconds West 10,112.59 feet to the point of beginning, **LESS AND EXCEPT** any portion of State Lease No. 2652 that may lie within the above described tract, containing approximately **1,523 acres**, all as more particularly outlined on a plat on file in the Office of Mineral Resources, Department of Natural Resources. All bearings, distances and coordinates are based on Louisiana Coordinate System of 1927, (North or South Zone), where applicable.

NOTE: The above description of the Tract nominated for lease has been provided and corrected, where required, exclusively by the nomination party. Any mineral lease selected from this Tract and awarded by the Louisiana State Mineral Board shall be without warranty of any kind, either express, implied, or statutory, including, but not limited to, the implied warranties of merchantability and fitness for a particular purpose. Should the mineral lease awarded by the Louisiana State Mineral Board be subsequently modified, cancelled or abrogated due to the existence of conflicting leases, operating agreements, private claims or other future obligations or conditions which may affect all or any portion of the leased Tract, it shall not relieve the Lessee of the obligation to pay any bonus due thereon to the Louisiana State Mineral Board, nor shall the Louisiana State Mineral Board be obligated to refund any consideration paid by the Lessor prior to such modification, cancellation, or abrogation, including, but not limited to, bonuses, rentals and royalties.

NOTE: The State of Louisiana does hereby reserve, and this lease shall be subject to, the imprescriptible right of surface use in the nature of a servitude in favor of the Department of Natural Resources, including its Offices and Commissions, for the sole purpose of implementing, constructing, servicing and maintaining approved coastal zone management and/or restoration projects. Utilization of any and all rights derived

under this lease by the mineral lessee, its agents, successors or assigns, shall not interfere with nor hinder the reasonable surface use by the Department of Natural Resources, its Offices or Commissions, as herein above reserved.

NOTE: It appears, according to our records, that a portion of this Tract is located within the restrictive safety fairway area as set out by the Corps of Engineers, U.S. Army and/or the restrictive anchorage area as set out by the U.S. Coast Guard.

NOTE: The Department of Wildlife and Fisheries has designated certain areas in the coastal waters of the State of Louisiana as Oyster Seed Bed Areas. The exact location of those Seed Bed Areas must be obtained from the Department of Wildlife and Fisheries and any work done under a mineral lease from the State of Louisiana may necessarily be conducted in conformity with the rules and regulations promulgated by the said Department of Wildlife and Fisheries for Oyster Seed Bed Areas.

Applicant: THEOPHILUS OIL, GAS & LAND SERVICES, LLC

| Bidder | Cash<br>Payment | Price/<br>Acre | Rental | Oil | Gas | Other |
|--------|-----------------|----------------|--------|-----|-----|-------|
|        |                 |                |        |     |     |       |
|        |                 |                |        |     |     |       |
|        |                 |                |        |     |     |       |
|        |                 |                |        |     |     |       |



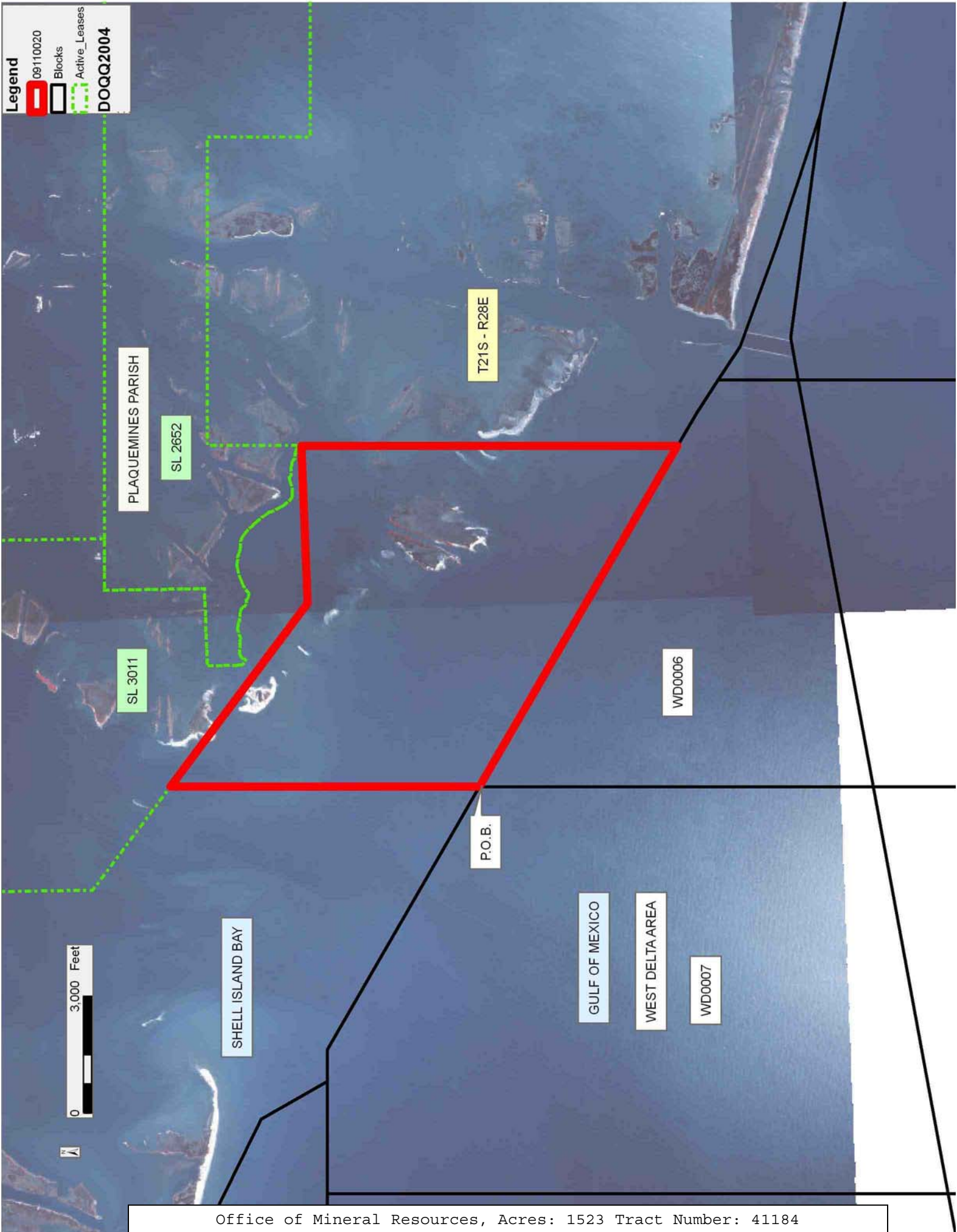
**Legend**

09110020

Blocks

Active\_Leases

**DOQQ2004**



**TRACT 41185 - Lafourche Parish, Louisiana**

All of the lands now or formerly constituting the beds and bottoms of all water bodies of every nature and description as to which title is vested in the State of Louisiana, together with all islands arising therein and other lands formed by accretion or by reliction, where allowed by law, excepting tax adjudicated lands, and not presently under mineral lease on November 12, 2009, situated in Lafourche Parish, Louisiana, and more particularly described as follows: Beginning at a point having Coordinates of X = 2,345,630.00 and Y = 209,602.00; thence East 6,627.96 feet to a point on the boundary of State Lease No. 19647 having Coordinates of X = 2,352,257.96 and Y = 209,602.00; thence along the boundary of said State Lease No. 19647 the following courses: South 00 degrees 51 minutes 26 seconds East 1,651.57 feet and South 03 degrees 30 minutes 00 seconds East 2,639.79 feet to its Southwest corner having Coordinates of X = 2,352,443.83 and Y = 205,315.75; thence West 6,813.83 feet to a point having Coordinates of X = 2,345,630.00 and Y = 205,315.75; thence North 4,286.25 feet to the point of beginning, containing approximately **285 acres**, all as more particularly outlined on a plat on file in the Office of Mineral Resources, Department of Natural Resources. All bearings, distances and coordinates are based on Louisiana Coordinate System of 1927, (North or South Zone), where applicable.

NOTE: The above description of the Tract nominated for lease has been provided and corrected, where required, exclusively by the nomination party. Any mineral lease selected from this Tract and awarded by the Louisiana State Mineral Board shall be without warranty of any kind, either express, implied, or statutory, including, but not limited to, the implied warranties of merchantability and fitness for a particular purpose. Should the mineral lease awarded by the Louisiana State Mineral Board be subsequently modified, cancelled or abrogated due to the existence of conflicting leases, operating agreements, private claims or other future obligations or conditions which may affect all or any portion of the leased Tract, it shall not relieve the Lessee of the obligation to pay any bonus due thereon to the Louisiana State Mineral Board, nor shall the Louisiana State Mineral Board be obligated to refund any consideration paid by the Lessor prior to such modification, cancellation, or abrogation, including, but not limited to, bonuses, rentals and royalties.

NOTE: The State of Louisiana does hereby reserve, and this lease shall be subject to, the imprescriptible right of surface use in the nature of a servitude in favor of the Department of Natural Resources, including its Offices and Commissions, for the sole purpose of implementing, constructing, servicing and maintaining approved coastal zone management and/or restoration projects. Utilization of any and all rights derived under this lease by the mineral lessee, its agents, successors or assigns, shall not interfere with nor hinder the reasonable surface use by the Department of Natural Resources, its Offices or Commissions, as herein above reserved.



NOTE: The Department of Wildlife and Fisheries has designated certain areas in the coastal waters of the State of Louisiana as Oyster Seed Bed Areas. The exact location of those Seed Bed Areas must be obtained from the Department of Wildlife and Fisheries and any work done under a mineral lease from the State of Louisiana may necessarily be conducted in conformity with the rules and regulations promulgated by the said Department of Wildlife and Fisheries for Oyster Seed Bed Areas.

Applicant: VADER ENERGY

| Bidder | Cash<br>Payment | Price/<br>Acre | Rental | Oil | Gas | Other |
|--------|-----------------|----------------|--------|-----|-----|-------|
|        |                 |                |        |     |     |       |
|        |                 |                |        |     |     |       |
|        |                 |                |        |     |     |       |
|        |                 |                |        |     |     |       |

**Legend**  
09110003  
Active\_Leases  
DOQQ2004



**TRACT 41186 - Lafourche Parish, Louisiana**

All of the lands now or formerly constituting the beds and bottoms of all water bodies of every nature and description as to which title is vested in the State of Louisiana, together with all islands arising therein and other lands formed by accretion or by reliction, where allowed by law, excepting tax adjudicated lands, and not presently under mineral lease on November 12, 2009, situated in Lafourche Parish, Louisiana, and more particularly described as follows: Beginning at a point having Coordinates of X = 2,350,225.00 and Y = 205,315.75; thence East 2,218.83 feet to the Southwest corner of State Lease No. 19647 having Coordinates of X = 2,352,443.83 and Y = 205,315.75; thence North 88 degrees 37 minutes 15 seconds East 5,272.31 feet along the Southern boundary of said State Lease No. 19647 to its Southeast corner having Coordinates of X = 2,357,714.61 and Y = 205,442.65; thence South 05 degrees 36 minutes 40 seconds East 4,464.04 feet to a point having Coordinates of X = 2,358,151.09 and Y = 201,000.00; thence West 7,926.09 feet to a point having Coordinates of X = 2,350,225.00 and Y = 201,000.00; thence North 4,315.75 feet to the point of beginning, containing approximately **71 acres**, all as more particularly outlined on a plat on file in the Office of Mineral Resources, Department of Natural Resources. All bearings, distances and coordinates are based on Louisiana Coordinate System of 1927, (North or South Zone), where applicable.

NOTE: The above description of the Tract nominated for lease has been provided and corrected, where required, exclusively by the nomination party. Any mineral lease selected from this Tract and awarded by the Louisiana State Mineral Board shall be without warranty of any kind, either express, implied, or statutory, including, but not limited to, the implied warranties of merchantability and fitness for a particular purpose. Should the mineral lease awarded by the Louisiana State Mineral Board be subsequently modified, cancelled or abrogated due to the existence of conflicting leases, operating agreements, private claims or other future obligations or conditions which may affect all or any portion of the leased Tract, it shall not relieve the Lessee of the obligation to pay any bonus due thereon to the Louisiana State Mineral Board, nor shall the Louisiana State Mineral Board be obligated to refund any consideration paid by the Lessor prior to such modification, cancellation, or abrogation, including, but not limited to, bonuses, rentals and royalties.

NOTE: The State of Louisiana does hereby reserve, and this lease shall be subject to, the imprescriptible right of surface use in the nature of a servitude in favor of the Department of Natural Resources, including its Offices and Commissions, for the sole purpose of implementing, constructing, servicing and maintaining approved coastal zone management and/or restoration projects. Utilization of any and all rights derived under this lease by the mineral lessee, its agents, successors or assigns, shall not interfere with nor hinder the reasonable surface use by the Department of Natural Resources, its Offices or Commissions, as herein above reserved.

NOTE: The Department of Wildlife and Fisheries has designated certain areas in the coastal waters of the State of Louisiana as Oyster Seed Bed Areas. The exact location of those Seed Bed Areas must be obtained from the Department of Wildlife and Fisheries and any work done under a mineral lease from the State of Louisiana may necessarily be conducted in conformity with the rules and regulations promulgated by the said Department of Wildlife and Fisheries for Oyster Seed Bed Areas.

Applicant: VADER ENERGY

| Bidder | Cash<br>Payment | Price/<br>Acre | Rental | Oil | Gas | Other |
|--------|-----------------|----------------|--------|-----|-----|-------|
|        |                 |                |        |     |     |       |
|        |                 |                |        |     |     |       |
|        |                 |                |        |     |     |       |
|        |                 |                |        |     |     |       |



Legend

09110006

Active\_Leases

DOQQ2004



**TRACT 41187 - Lafourche Parish, Louisiana**

All of the lands now or formerly constituting the beds and bottoms of all water bodies of every nature and description as to which title is vested in the State of Louisiana, together with all islands arising therein and other lands formed by accretion or by reliction, where allowed by law, excepting tax adjudicated lands, and not presently under mineral lease on November 12, 2009, situated in Lafourche Parish, Louisiana, and more particularly described as follows: Beginning at a point having Coordinates of X = 2,345,630.00 and Y = 205,315.75; thence East 4,595.00 feet to a point having Coordinates of X = 2,350,225.00 and Y = 205,315.75; thence South 7,215.75 feet to a point having Coordinates of X = 2,350,225.00 and Y = 198,100.00; thence West 4,595.00 feet to a point having Coordinates of X = 2,345,630.00 and Y = 198,100.00; thence North 7,215.75 feet to the point of beginning, containing approximately **144 acres**, all as more particularly outlined on a plat on file in the Office of Mineral Resources, Department of Natural Resources. All bearings, distances and coordinates are based on Louisiana Coordinate System of 1927, (North or South Zone), where applicable.

NOTE: The above description of the Tract nominated for lease has been provided and corrected, where required, exclusively by the nomination party. Any mineral lease selected from this Tract and awarded by the Louisiana State Mineral Board shall be without warranty of any kind, either express, implied, or statutory, including, but not limited to, the implied warranties of merchantability and fitness for a particular purpose. Should the mineral lease awarded by the Louisiana State Mineral Board be subsequently modified, cancelled or abrogated due to the existence of conflicting leases, operating agreements, private claims or other future obligations or conditions which may affect all or any portion of the leased Tract, it shall not relieve the Lessee of the obligation to pay any bonus due thereon to the Louisiana State Mineral Board, nor shall the Louisiana State Mineral Board be obligated to refund any consideration paid by the Lessor prior to such modification, cancellation, or abrogation, including, but not limited to, bonuses, rentals and royalties.

NOTE: The State of Louisiana does hereby reserve, and this lease shall be subject to, the imprescriptible right of surface use in the nature of a servitude in favor of the Department of Natural Resources, including its Offices and Commissions, for the sole purpose of implementing, constructing, servicing and maintaining approved coastal zone management and/or restoration projects. Utilization of any and all rights derived under this lease by the mineral lessee, its agents, successors or assigns, shall not interfere with nor hinder the reasonable surface use by the Department of Natural Resources, its Offices or Commissions, as herein above reserved.

NOTE: The Department of Wildlife and Fisheries has designated certain areas in the coastal waters of the State of Louisiana as Oyster Seed Bed Areas. The exact location of those Seed Bed Areas must be obtained from

the Department of Wildlife and Fisheries and any work done under a mineral lease from the State of Louisiana may necessarily be conducted in conformity with the rules and regulations promulgated by the said Department of Wildlife and Fisheries for Oyster Seed Bed Areas.

Applicant: VADER ENERGY

| Bidder | Cash<br>Payment | Price/<br>Acre | Rental | Oil | Gas | Other |
|--------|-----------------|----------------|--------|-----|-----|-------|
|        |                 |                |        |     |     |       |
|        |                 |                |        |     |     |       |
|        |                 |                |        |     |     |       |
|        |                 |                |        |     |     |       |



