

TRACT 40565 - Natchitoches Parish School Board - Natchitoches Parish, Louisiana

The State Mineral Board acting on behalf of the Natchitoches Parish School Board, pursuant to Resolution(s) adopted by that (those) body(ies) and in accordance with Louisiana Revised Statutes 30:121-136 and 151-156, as amended, and Article XIV, Section 16(A)(9) and (B) of the Louisiana Constitution of 1974, as same may be continued and promulgated in proper statutory form and, further, amended from time to time, advertises the lands not under mineral lease on November 12, 2008, excluding the beds and bottoms of all navigable water bodies located within the following: All or a portion of Section 16, Township 7 North, Range 7 West in Natchitoches Parish, Louisiana, being all of the NW 1/4; NW of NE; NW of SW; and the South 1/2 of South 1/2 containing approximately **397.93 acres**, all as more particularly outlined on a plat on file in the Office of Mineral Resources, Department of Natural Resources. All bearings, distances and coordinates are based on Louisiana Coordinate System of 1927, (North or South Zone).

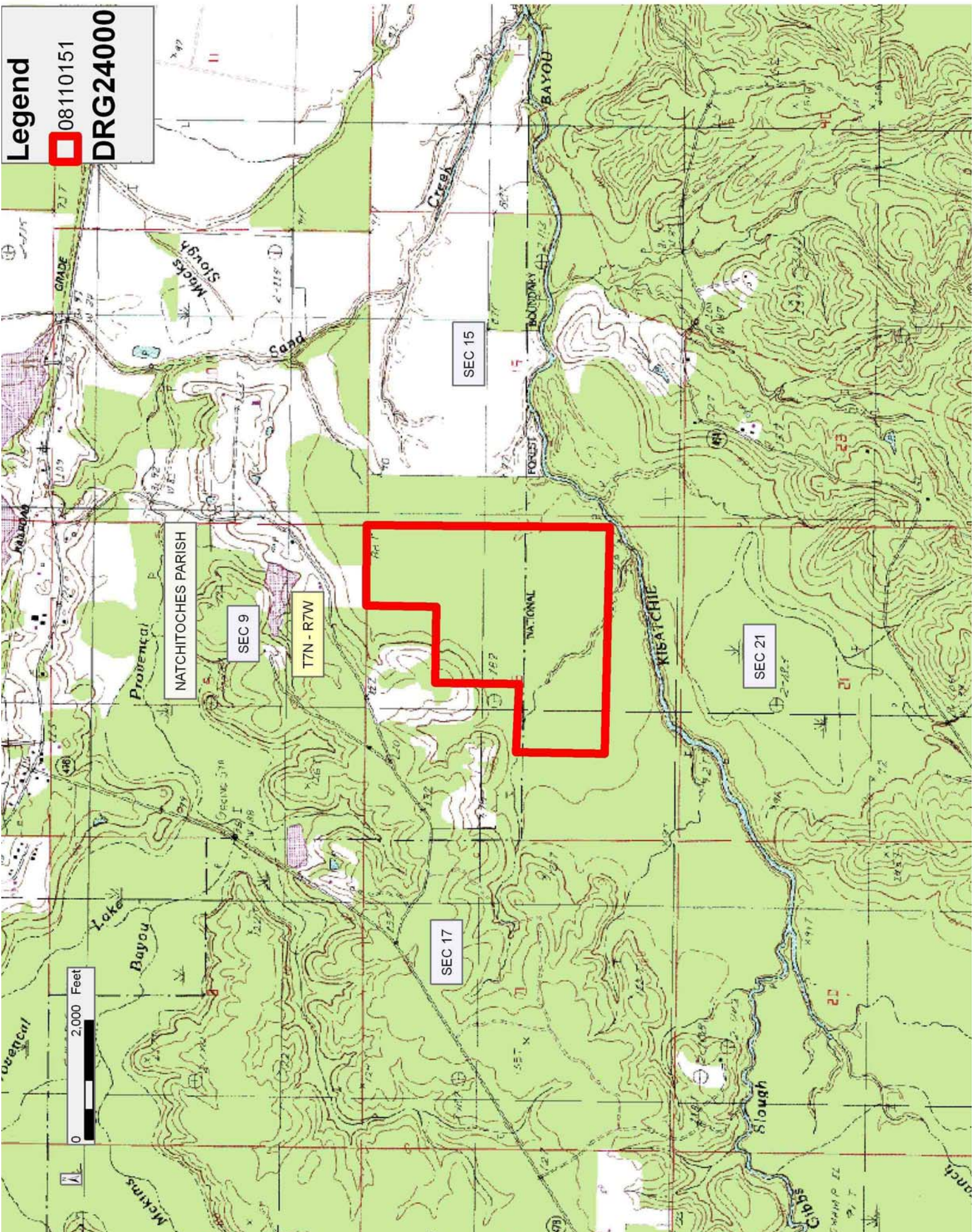
NOTE: The above description of the Tract nominated for lease has been provided and corrected, where required, exclusively by the nomination party. Any mineral lease selected from this Tract and awarded by the Louisiana State Mineral Board shall be without warranty of any kind, either express, implied, or statutory, including, but not limited to, the implied warranties of merchantability and fitness for a particular purpose. Should the mineral lease awarded by the Louisiana State Mineral Board be subsequently modified, cancelled or abrogated due to the existence of conflicting leases, operating agreements, private claims or other future obligations or conditions which may affect all or any portion of the leased Tract, it shall not relieve the Lessee of the obligation to pay any bonus due thereon to the Louisiana State Mineral Board, nor shall the Louisiana State Mineral Board be obligated to refund any consideration paid by the Lessor prior to such modification, cancellation, or abrogation, including, but not limited to, bonuses, rentals and royalties.

NOTE: Lessor reserves the right of first refusal.

Applicant: NATCHITOCHE PARISH SCHOOL BOARD to Agency and by Resolution from the Natchitoches Parish School Board authorizing the Mineral Board to act in its behalf

Bidder	Cash Payment	Price/Acre	Rental	Oil	Gas	Other

Legend
08110151
DRG24000



Office of Mineral Resources, Acres: 397.93 Tract Number: 40565

TRACT 40566 - West Feliciana Parish, Louisiana

A certain Tract of land, excluding the beds and bottoms of all navigable waters, belonging to and not presently under mineral lease from The Louisiana Department of Wildlife and Fisheries, on November 12, 2008, located within the geographical boundaries of The Tunica Hills Wildlife Management Area, being more particularly described as follows: Beginning at a point having Coordinates of X = 1,932,343.50 and Y = 841,676.75; thence West approximately 2,995 feet to a point on the boundary of Louisiana Department of Public Safety and Corrections, Angola Prison having a Coordinate of Y = 841,676.75; thence Northerly approximately 6,560 feet along the East boundary of said Louisiana Department of Public Safety and Corrections, Angola Prison to its Northeast corner and the Northwest corner of the Tunica Hills Wildlife Management Area; thence along the boundary of said Tunica Hills Wildlife Management Area the following: Easterly approximately 6,166 feet and Southerly approximately 6,572 feet to a point of intersection with an East-West line having a Coordinate of Y = 841,676.75; thence West approximately 2,995 feet along said line to the point of beginning, **LESS AND EXCEPT** that portion, if any, of the above described tract that lies outside of the boundaries of the Tunica Hills Wildlife Management Area, the above described tract containing approximately **918 acres**, all as more particularly outlined on a plat on file in the Office of Mineral Resources, Department of Natural Resources. The description is based on information provided by the State Agency regarding location and ownership of surface and mineral rights. All bearings, distances and coordinates, if applicable, are based on Louisiana Coordinate System of 1927, (North or South Zone).

NOTE: The above description of the Tract nominated for lease has been provided and corrected, where required, exclusively by the nomination party. Any mineral lease selected from this Tract and awarded by the Louisiana State Mineral Board shall be without warranty of any kind, either express, implied, or statutory, including, but not limited to, the implied warranties of merchantability and fitness for a particular purpose. Should the mineral lease awarded by the Louisiana State Mineral Board be subsequently modified, cancelled or abrogated due to the existence of conflicting leases, operating agreements, private claims or other future obligations or conditions which may affect all or any portion of the leased Tract, it shall not relieve the Lessee of the obligation to pay any bonus due thereon to the Louisiana State Mineral Board, nor shall the Louisiana State Mineral Board be obligated to refund any consideration paid by the Lessor prior to such modification, cancellation, or abrogation, including, but not limited to, bonuses, rentals and royalties.

NOTE: No surface activities will be allowed on the property without written consent from the Department of Wildlife and Fisheries.

NOTE: The Department will require a minimum bonus of \$150 per acre and a minimum royalty of 25%.

NOTE: Contact for the Department will be Mike Windham at 504-284-5268.

Applicant: LESLIE M. COOPER

Bidder	Cash Payment	Price/Acre	Rental	Oil	Gas	Other

Legend
08110012
Wildlife
DOQQ2004

WEST FELICIANA PARISH

T1S - R4W

P.O.B.

TUNICA HILLS WMA (ANGOLA TRACT)

T1S - R5W



TRACT 40567 - West Feliciana Parish, Louisiana

A certain Tract of land, excluding the beds and bottoms of all navigable waters, belonging to and not presently under mineral lease from The Louisiana Department of Wildlife and Fisheries, on November 12, 2008, located within the geographical boundaries of The Tunica Hills Wildlife Management Area, being more particularly described as follows: Beginning at a point having Coordinates of X = 1,932,343.50 and Y = 841,676.75; thence East approximately 2,995 feet to a point on the boundary of the Tunica Hills Wildlife Management Area having a Coordinate of Y = 841,676.75; thence along the meanders of boundary of said Tunica Hills Wildlife Management Area the following: Southerly, Easterly, Southerly, Easterly, Northerly, Easterly, Southerly, Westerly, Southeasterly, Southwesterly, Northwesterly, Northerly, Westerly, Southerly and Southwesterly to a point of intersection with the Eastern boundary of Louisiana Department of Public Safety and Corrections, Angola Prison; thence along the boundary of said Angola Prison the following: Northerly, Northeasterly, Southeasterly, Northerly, Westerly and Northerly approximately 4,574 feet to a point of intersection with an East-West line having a Coordinate of Y = 841,676.75; thence East approximately 2,995 feet along said line to the point of beginning, **LESS AND EXCEPT** that portion, if any, of the above described tract that lies outside of the boundaries of the Tunica Hills Wildlife Management Area, the above described tract containing approximately **1,427 acres**, all as more particularly outlined on a plat on file in the Office of Mineral Resources, Department of Natural Resources. The description is based on information provided by the State Agency regarding location and ownership of surface and mineral rights. All bearings, distances and coordinates, if applicable, are based on Louisiana Coordinate System of 1927, (North or South Zone).

NOTE: The above description of the Tract nominated for lease has been provided and corrected, where required, exclusively by the nomination party. Any mineral lease selected from this Tract and awarded by the Louisiana State Mineral Board shall be without warranty of any kind, either express, implied, or statutory, including, but not limited to, the implied warranties of merchantability and fitness for a particular purpose. Should the mineral lease awarded by the Louisiana State Mineral Board be subsequently modified, cancelled or abrogated due to the existence of conflicting leases, operating agreements, private claims or other future obligations or conditions which may affect all or any portion of the leased Tract, it shall not relieve the Lessee of the obligation to pay any bonus due thereon to the Louisiana State Mineral Board, nor shall the Louisiana State Mineral Board be obligated to refund any consideration paid by the Lessor prior to such modification, cancellation, or abrogation, including, but not limited to, bonuses, rentals and royalties.

NOTE: No surface activities will be allowed on the property without written consent from the Department of Wildlife and Fisheries.



NOTE: The Department will require a minimum bonus of \$150 per acre and a minimum royalty of 25%.

NOTE: Contact for the Department will be Mike Windham at 504-284-5268.

Applicant: LESLIE M. COOPER

Bidder	Cash Payment	Price/Acre	Rental	Oil	Gas	Other

Legend

-  08110013
-  Wildlife
- DOQQ2004**

WEST FELICIANA PARISH

TUNICA HILLS WMA (ANGOLA TRACT)

P.O.B.

T1S - R4W

T1S - R5W

3,000 Feet



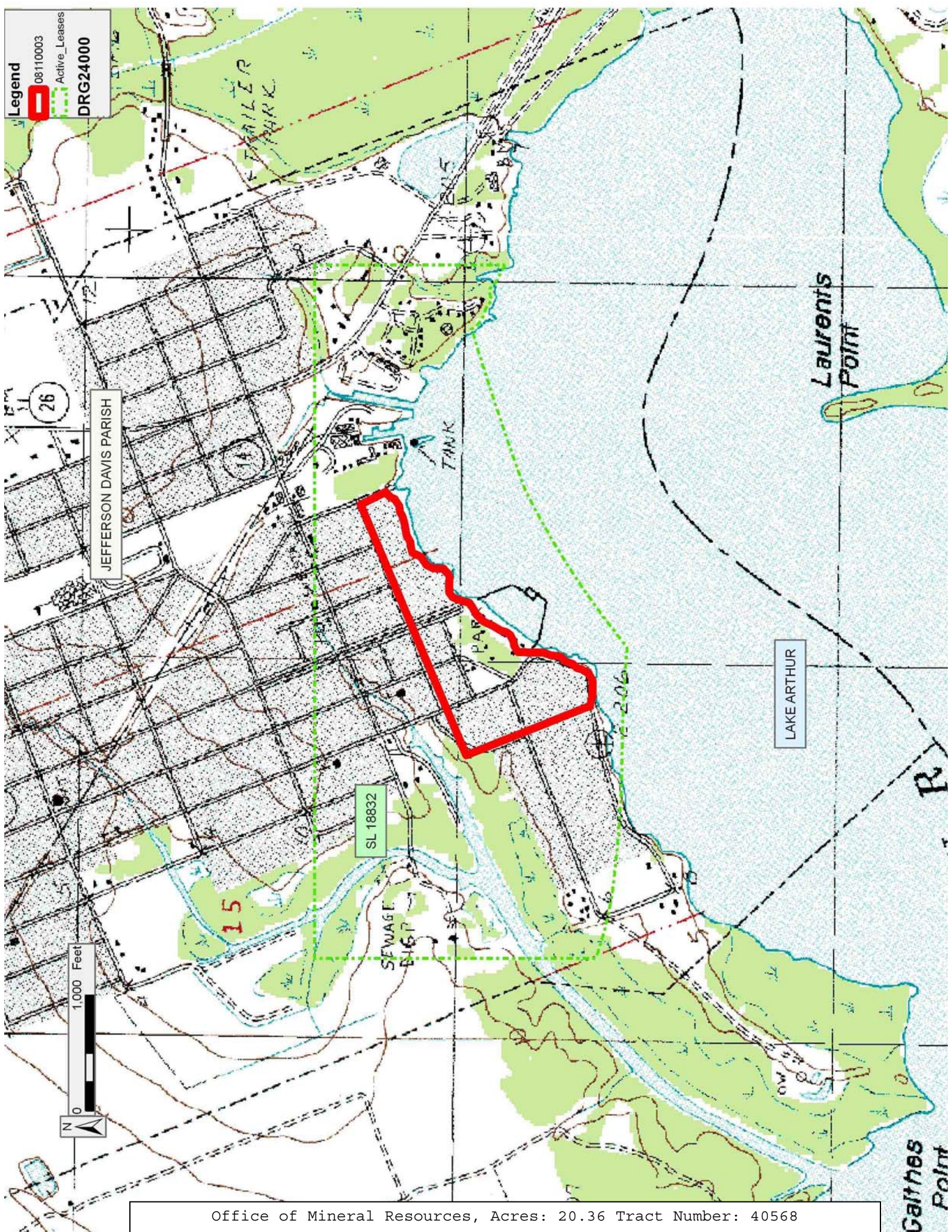
TRACT 40568 - Jefferson Davis Parish, Louisiana

A certain Tract of land, excluding the beds and bottoms of all navigable waters, belonging to and not presently under mineral lease from Town Of Lake Arthur on November 12, 2008, being more fully described as follows: Beginning at a point having Coordinates of X = 1,576,015.00 and Y = 515,674.00; thence South 21 degrees 30 minutes 00 seconds East, approximately 361 feet to a point of intersection with the Northerly bankline of Lake Arthur; thence Southwesterly on the said bankline for an approximate distance of 3,183 feet to the point of intersection with a line having a bearing of South 20 degrees 00 minutes 00 seconds East commencing at a point having Coordinates of X = 1,573,763.39 and Y = 514,787.07; thence North 20 degrees 00 minutes 00 seconds West approximately 1,293 feet to a point having Coordinates of X = 1,573,763.39 and Y = 514,787.07; thence North 68 degrees 30 minutes 00 seconds East 2,420.00 feet to the point of beginning, **LESS AND EXCEPT** any acreage covered by State Agency Lease No. 17629 that may lie within the above described tract, containing approximately **20.36 acres**, all as more particularly outlined on a plat on file in the Office of Mineral Resources, Department of Natural Resources. The description is based on information provided by the State Agency regarding location and ownership of surface and mineral rights. All bearings, distances and coordinates, if applicable, are based on Louisiana Coordinate System of 1927, (North or South Zone).

NOTE: The above description of the Tract nominated for lease has been provided and corrected, where required, exclusively by the nomination party. Any mineral lease selected from this Tract and awarded by the Louisiana State Mineral Board shall be without warranty of any kind, either express, implied, or statutory, including, but not limited to, the implied warranties of merchantability and fitness for a particular purpose. Should the mineral lease awarded by the Louisiana State Mineral Board be subsequently modified, cancelled or abrogated due to the existence of conflicting leases, operating agreements, private claims or other future obligations or conditions which may affect all or any portion of the leased Tract, it shall not relieve the Lessee of the obligation to pay any bonus due thereon to the Louisiana State Mineral Board, nor shall the Louisiana State Mineral Board be obligated to refund any consideration paid by the Lessor prior to such modification, cancellation, or abrogation, including, but not limited to, bonuses, rentals and royalties.

Applicant: ROBLYN RESOURCES, INC. to Agency and by Resolution from the Town Of Lake Arthur authorizing the Mineral Board to act in its behalf

Bidder	Cash Payment	Price/Acre	Rental	Oil	Gas	Other



Legend
08110003
Active_Leases
DRG24000

JEFFERSON DAVIS PARISH

LAKE ARTHUR

Laurentis Point

SL 18832

SEWAGE DITCH

15

TANK

206

Gathes Point

Office of Mineral Resources, Acres: 20.36 Tract Number: 40568