

**TRACT 40570 - Ouachita Parish, Louisiana**

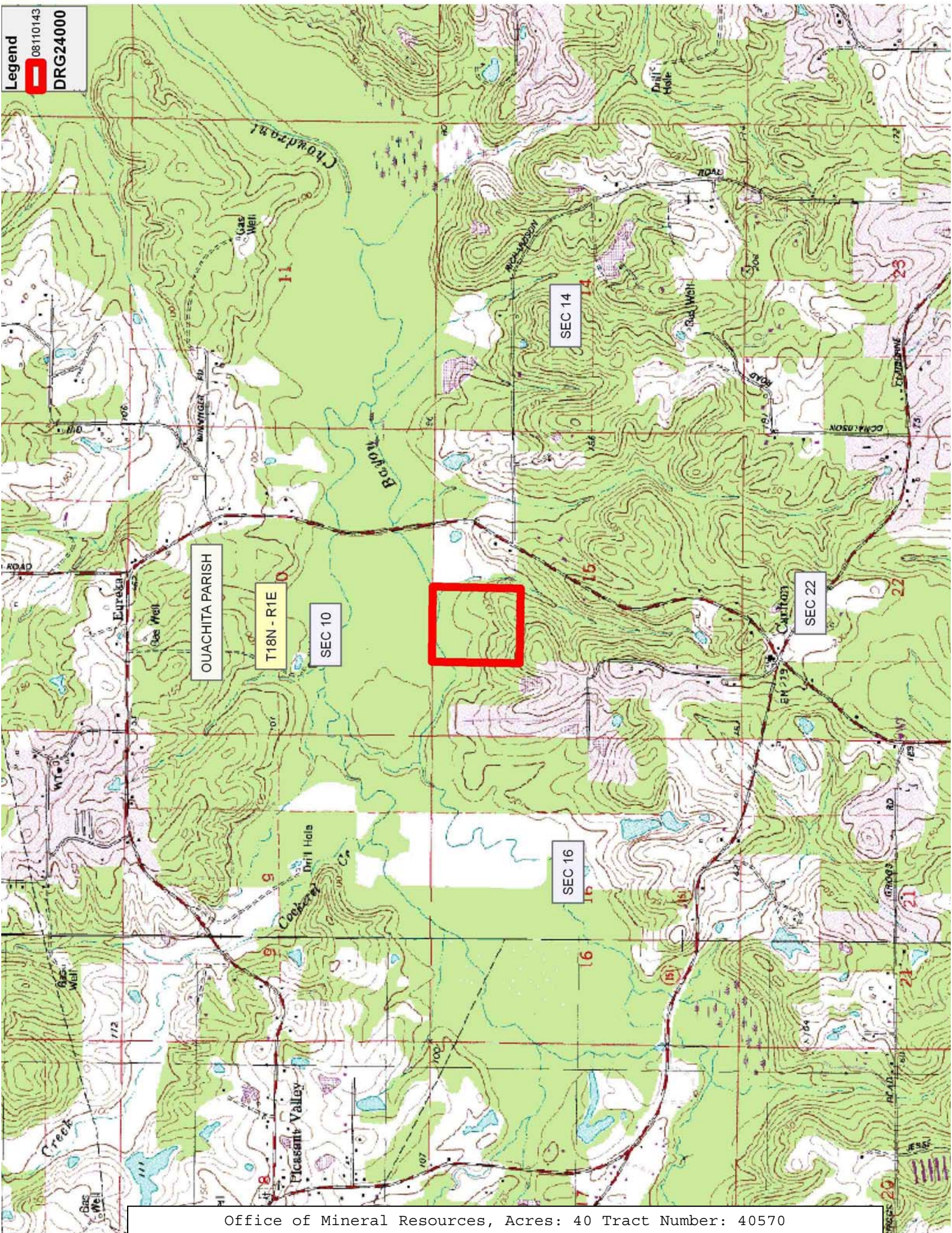
All of the mineral rights only under land adjudicated to and acquired by the State of Louisiana in and through a proper tax sale, and subsequently alienated by the State which retained the mineral rights thereto, and which is not under valid mineral lease from the State of Louisiana on November 12, 2008, situated in Ouachita Parish, Louisiana, and being more fully described as follows: The Northeast Quarter (NE/4) of the Northwest Quarter (NW/4) of Section 15, Township 18 North, Range 1 East, Ouachita Parish, Louisiana, being the same property acquired by John P. Collins from the State of Louisiana on October 21, 1958 under Patent No. 18956, containing approximately **40 acres**, all as more particularly outlined on a plat on file in the Office of Mineral Resources, Department of Natural Resources. All bearings, distances and coordinates are based on Louisiana Coordinate System of 1927, (North or South Zone), where applicable.

NOTE: The above description of the Tract nominated for lease has been provided and corrected, where required, exclusively by the nomination party. Any mineral lease selected from this Tract and awarded by the Louisiana State Mineral Board shall be without warranty of any kind, either express, implied, or statutory, including, but not limited to, the implied warranties of merchantability and fitness for a particular purpose. Should the mineral lease awarded by the Louisiana State Mineral Board be subsequently modified, cancelled or abrogated due to the existence of conflicting leases, operating agreements, private claims or other future obligations or conditions which may affect all or any portion of the leased Tract, it shall not relieve the Lessee of the obligation to pay any bonus due thereon to the Louisiana State Mineral Board, nor shall the Louisiana State Mineral Board be obligated to refund any consideration paid by the Lessor prior to such modification, cancellation, or abrogation, including, but not limited to, bonuses, rentals and royalties.

Applicant: CYPRESS ENERGY CORPORATION

Bidder	Cash Payment	Price/Acre	Rental	Oil	Gas	Other







**TRACT 40571 - St. Charles Parish, Louisiana**

All of the mineral rights only under land adjudicated to and acquired by the State of Louisiana in and through a proper tax sale, and subsequently alienated by the State which retained the mineral rights thereto, and which is not under valid mineral lease from the State of Louisiana on November 12, 2008, situated in St. Charles Parish, Louisiana, and being more fully described as follows: Lots 19 to 22 inclusive Division No. 2 of subdrainage District No. 1 of St. Charles Drainage District No. 2 containing 80 acres which tract was adjudicated to the State for unpaid taxes of the year 1920 in the name of Estate of George Harris, containing approximately **80 acres**, all as more particularly outlined on a plat on file in the Office of Mineral Resources, Department of Natural Resources. All bearings, distances and coordinates are based on Louisiana Coordinate System of 1927, (North or South Zone), where applicable.

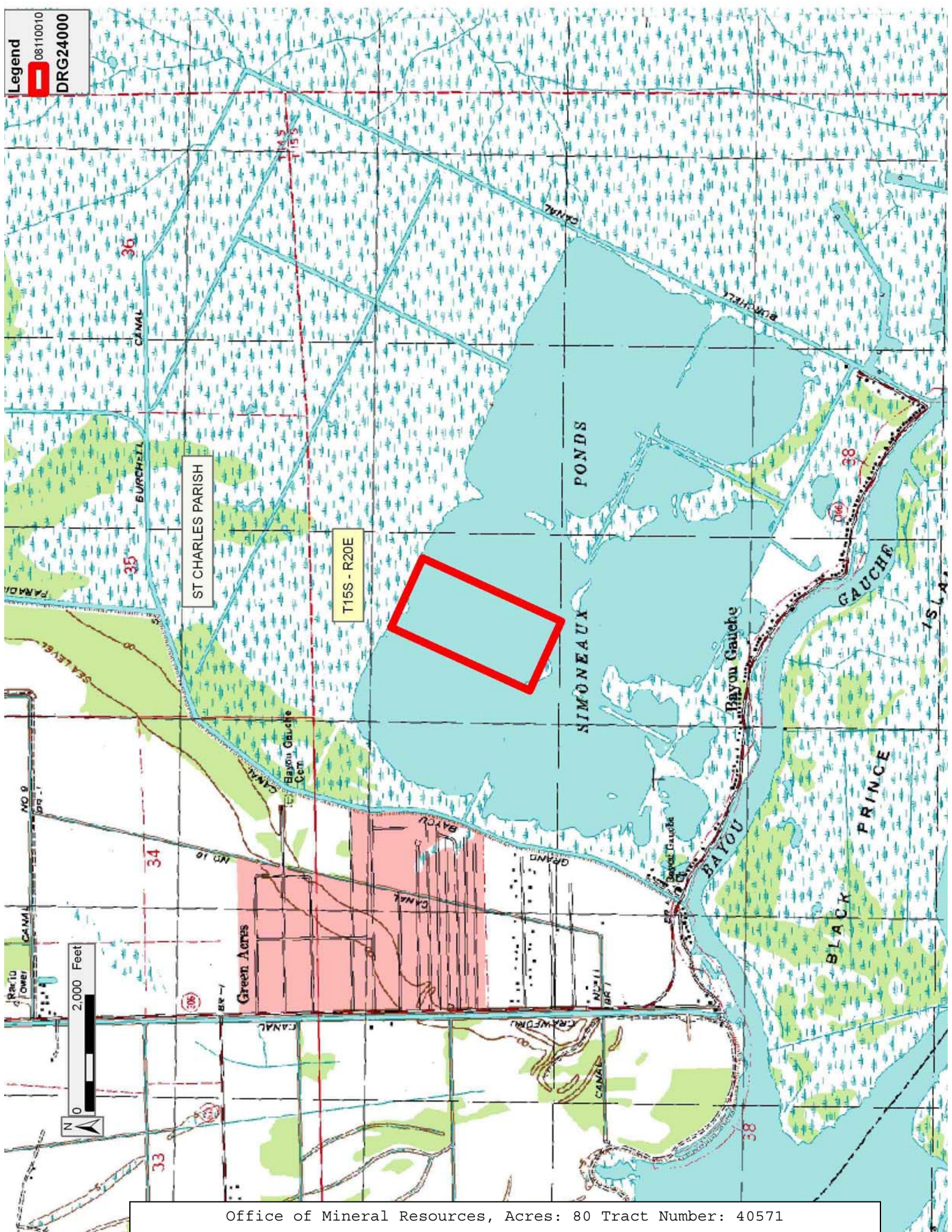
NOTE: The above description of the Tract nominated for lease has been provided and corrected, where required, exclusively by the nomination party. Any mineral lease selected from this Tract and awarded by the Louisiana State Mineral Board shall be without warranty of any kind, either express, implied, or statutory, including, but not limited to, the implied warranties of merchantability and fitness for a particular purpose. Should the mineral lease awarded by the Louisiana State Mineral Board be subsequently modified, cancelled or abrogated due to the existence of conflicting leases, operating agreements, private claims or other future obligations or conditions which may affect all or any portion of the leased Tract, it shall not relieve the Lessee of the obligation to pay any bonus due thereon to the Louisiana State Mineral Board, nor shall the Louisiana State Mineral Board be obligated to refund any consideration paid by the Lessor prior to such modification, cancellation, or abrogation, including, but not limited to, bonuses, rentals and royalties.

NOTE: The State of Louisiana does hereby reserve, and this lease shall be subject to, the imprescriptible right of surface use in the nature of a servitude in favor of the Department of Natural Resources, including its Offices and Commissions, for the sole purpose of implementing, constructing, servicing and maintaining approved coastal zone management and/or restoration projects. Utilization of any and all rights derived under this lease by the mineral lessee, its agents, successors or assigns, shall not interfere with nor hinder the reasonable surface use by the Department of Natural Resources, its Offices or Commissions, as herein above reserved.

Applicant: LESLIE M. COOPER

Bidder	Cash Payment	Price/Acre	Rental	Oil	Gas	Other







**TRACT 40572 - St. Charles Parish, Louisiana**

All of the mineral rights only under land adjudicated to and acquired by the State of Louisiana in and through a proper tax sale, and subsequently alienated by the State which retained the mineral rights thereto, and which is not under valid mineral lease from the State of Louisiana on November 12, 2008, situated in St. Charles Parish, Louisiana, and being more fully described as follows: Lots Nine to Twelve (9 to 12) inclusive Division No. 2 of subdrainage District No. 1 of St. Charles Drainage District No. 2 containing 80 acres which tract was adjudicated to the State for unpaid taxes of 1920 in the name of Estate of M. J. Heil, containing approximately **80 acres**, all as more particularly outlined on a plat on file in the Office of Mineral Resources, Department of Natural Resources. All bearings, distances and coordinates are based on Louisiana Coordinate System of 1927, (North or South Zone), where applicable.

NOTE: The above description of the Tract nominated for lease has been provided and corrected, where required, exclusively by the nomination party. Any mineral lease selected from this Tract and awarded by the Louisiana State Mineral Board shall be without warranty of any kind, either express, implied, or statutory, including, but not limited to, the implied warranties of merchantability and fitness for a particular purpose. Should the mineral lease awarded by the Louisiana State Mineral Board be subsequently modified, cancelled or abrogated due to the existence of conflicting leases, operating agreements, private claims or other future obligations or conditions which may affect all or any portion of the leased Tract, it shall not relieve the Lessee of the obligation to pay any bonus due thereon to the Louisiana State Mineral Board, nor shall the Louisiana State Mineral Board be obligated to refund any consideration paid by the Lessor prior to such modification, cancellation, or abrogation, including, but not limited to, bonuses, rentals and royalties.

NOTE: The State of Louisiana does hereby reserve, and this lease shall be subject to, the imprescriptible right of surface use in the nature of a servitude in favor of the Department of Natural Resources, including its Offices and Commissions, for the sole purpose of implementing, constructing, servicing and maintaining approved coastal zone management and/or restoration projects. Utilization of any and all rights derived under this lease by the mineral lessee, its agents, successors or assigns, shall not interfere with nor hinder the reasonable surface use by the Department of Natural Resources, its Offices or Commissions, as herein above reserved.

Applicant: LESLIE M. COOPER

Bidder	Cash Payment	Price/Acre	Rental	Oil	Gas	Other



