

**TRACT 40573 - West Feliciana Parish, Louisiana**

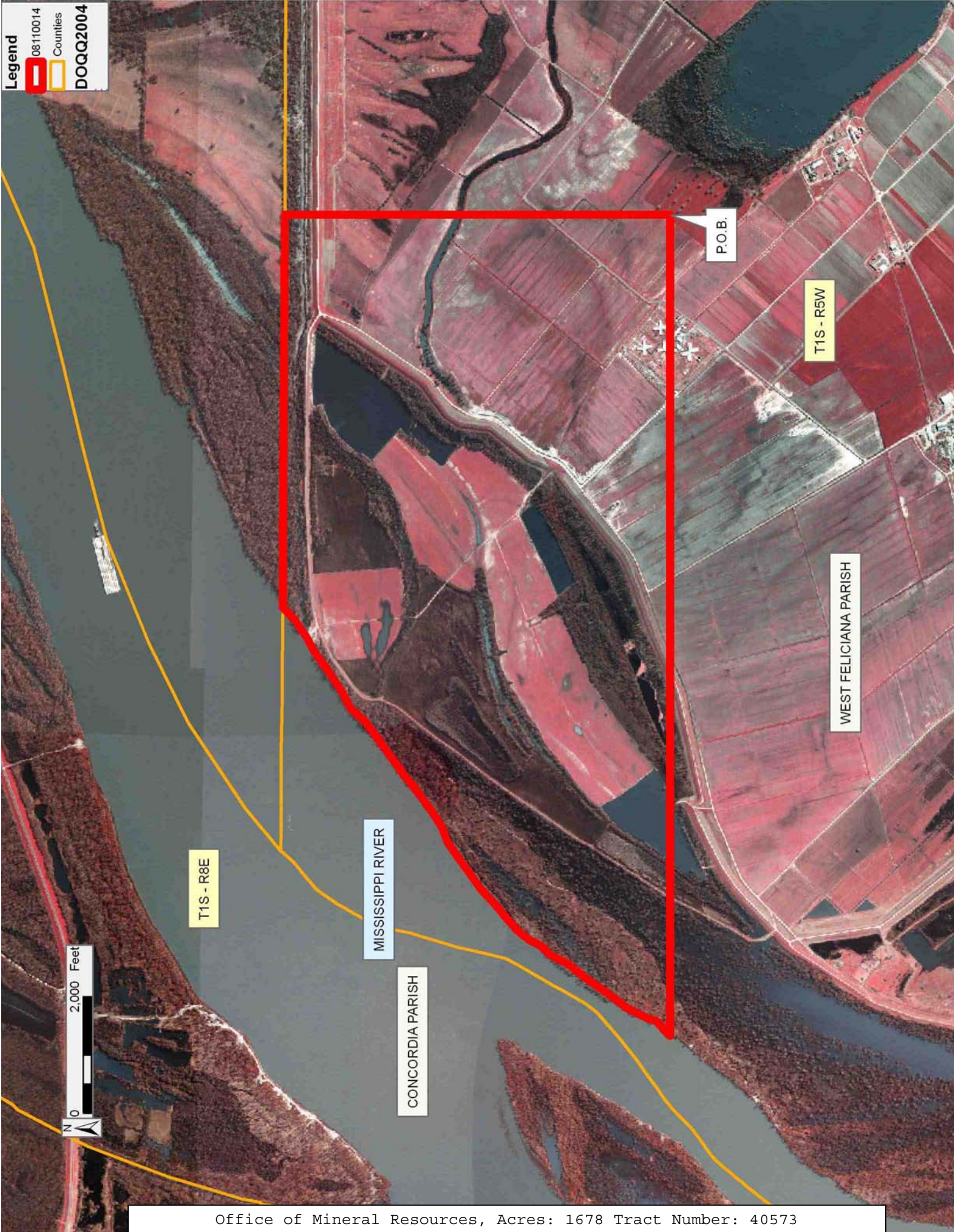
All lands, including lands now or formerly constituting the beds and bottoms of all water bodies of every nature and description, owned by and not presently under mineral lease as of November 12, 2008 from the State of Louisiana, situated in West Feliciana Parish, Louisiana, and being more fully described as follows: Beginning at a point having Coordinates of X = 1,915,410.15 and Y = 841,676.75; thence West approximately 14,089 feet to a point on the boundary of Louisiana Department of Public Safety and Corrections, Angola Prison having a Coordinate of Y = 841,676.75; thence along the boundary of said Louisiana Department of Public Safety and Corrections, Angola Prison the following: Northeasterly to a corner of said Angola Prison and Easterly approximately 6,735 feet to a point of intersection with a North-South line having a Coordinate of X = 1,915,410.15; thence South approximately 6,607 feet along said line to the point of beginning, containing approximately **1,678 acres**, all as more particularly outlined on a plat on file in the Office of Mineral Resources, Department of Natural Resources. All bearings, distances and coordinates are based on Louisiana Coordinate System of 1927, (North or South Zone), where applicable.

NOTE: The above description of the Tract nominated for lease has been provided and corrected, where required, exclusively by the nomination party. Any mineral lease selected from this Tract and awarded by the Louisiana State Mineral Board shall be without warranty of any kind, either express, implied, or statutory, including, but not limited to, the implied warranties of merchantability and fitness for a particular purpose. Should the mineral lease awarded by the Louisiana State Mineral Board be subsequently modified, cancelled or abrogated due to the existence of conflicting leases, operating agreements, private claims or other future obligations or conditions which may affect all or any portion of the leased Tract, it shall not relieve the Lessee of the obligation to pay any bonus due thereon to the Louisiana State Mineral Board, nor shall the Louisiana State Mineral Board be obligated to refund any consideration paid by the Lessor prior to such modification, cancellation, or abrogation, including, but not limited to, bonuses, rentals and royalties.

Applicant: LESLIE M. COOPER

Bidder	Cash Payment	Price/Acre	Rental	Oil	Gas	Other

**Legend**  
08110014  
Counties  
DOQQ2004



**TRACT 40574 - West Feliciana Parish, Louisiana**

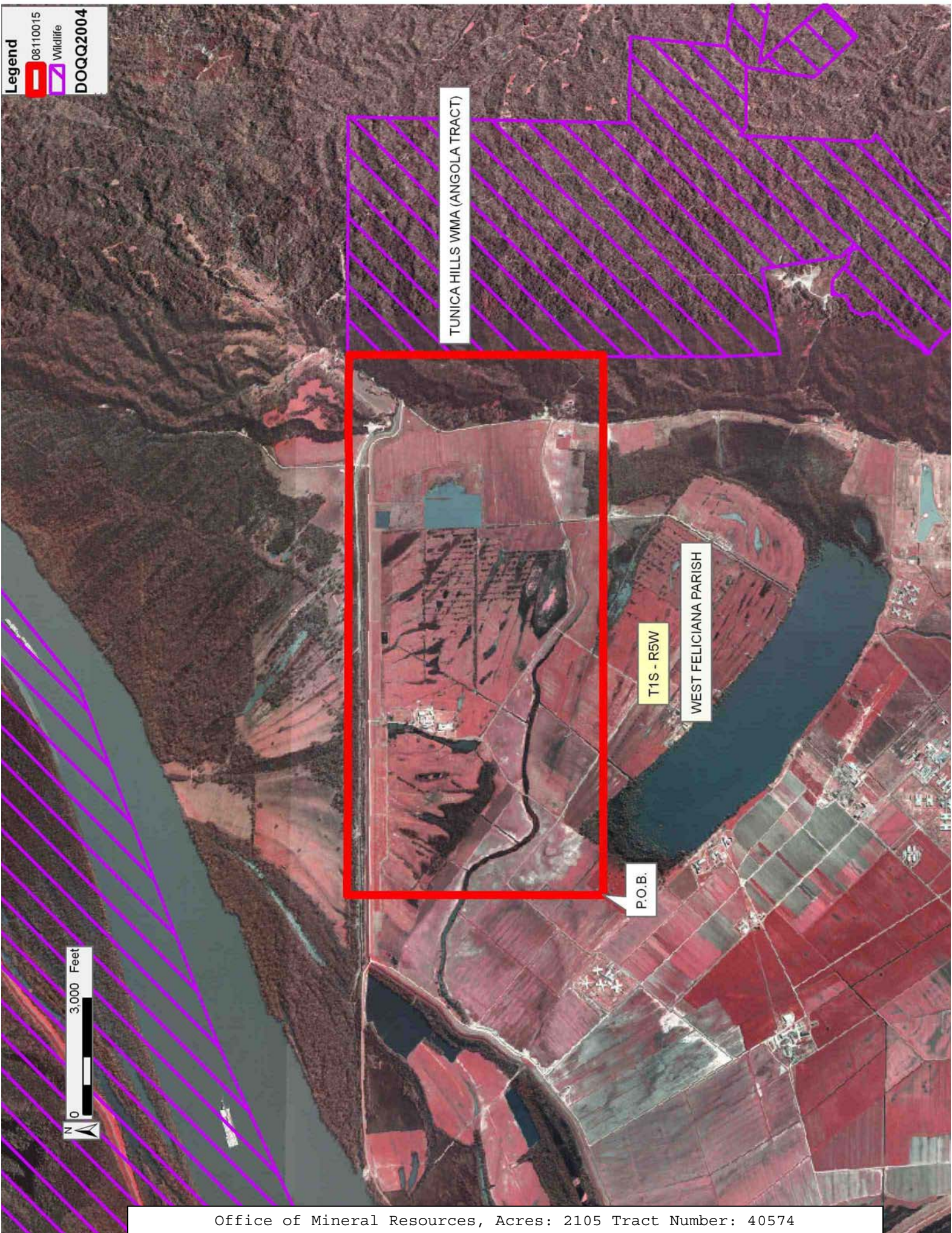
All lands, including lands now or formerly constituting the beds and bottoms of all water bodies of every nature and description, owned by and not presently under mineral lease as of November 12, 2008 from the State of Louisiana, situated in West Feliciana Parish, Louisiana, and being more fully described as follows: Beginning at a point having Coordinates of X = 1,915,410.15 and Y = 841,676.75; thence North approximately 6,607 feet to a point on the boundary of Louisiana Department of Public Safety and Corrections, Angola Prison having a Coordinate of X = 1,915,410.15; thence Easterly approximately 13,938 feet along the North boundary of said Louisiana Department of Public Safety and Corrections, Angola Prison to a point of intersection with the boundary of the Tunica Hills Wildlife Management Area; thence Southerly approximately 6,560 feet along the West boundary of said Tunica Hills Wildlife Management Area to a point of intersection with an East-West line a Coordinate of Y = 841,676.75; thence West approximately 13,938 feet along said line to the point of beginning, **LESS AND EXCEPT**, that portion, if any, of the Tunica Hills Wildlife Management Area that lies within the above described tract, containing approximately **2,105 acres**, all as more particularly outlined on a plat on file in the Office of Mineral Resources, Department of Natural Resources. All bearings, distances and coordinates are based on Louisiana Coordinate System of 1927, (North or South Zone), where applicable.

NOTE: The above description of the Tract nominated for lease has been provided and corrected, where required, exclusively by the nomination party. Any mineral lease selected from this Tract and awarded by the Louisiana State Mineral Board shall be without warranty of any kind, either express, implied, or statutory, including, but not limited to, the implied warranties of merchantability and fitness for a particular purpose. Should the mineral lease awarded by the Louisiana State Mineral Board be subsequently modified, cancelled or abrogated due to the existence of conflicting leases, operating agreements, private claims or other future obligations or conditions which may affect all or any portion of the leased Tract, it shall not relieve the Lessee of the obligation to pay any bonus due thereon to the Louisiana State Mineral Board, nor shall the Louisiana State Mineral Board be obligated to refund any consideration paid by the Lessor prior to such modification, cancellation, or abrogation, including, but not limited to, bonuses, rentals and royalties.

Applicant: LESLIE M. COOPER

Bidder	Cash Payment	Price/Acre	Rental	Oil	Gas	Other

**Legend**  
08110015  
Wildlife  
DOQQ2004



TUNICA HILLS WMA (ANGOLA TRACT)

T1S - R5W

WEST FELICIANA PARISH

P.O.B.

0 3,000 Feet

**TRACT 40575 - West Feliciana Parish, Louisiana**

All lands, including lands now or formerly constituting the beds and bottoms of all water bodies of every nature and description, owned by and not presently under mineral lease as of November 12, 2008 from the State of Louisiana, situated in West Feliciana Parish, Louisiana, and being more fully described as follows: Beginning at a point having Coordinates of X = 1,909,820.30 and Y = 841,676.75; thence South 10,000.00 feet to a point having Coordinates of X = 1,909,820.30 and Y = 831,676.75; thence West approximately 9,231 feet to a point on the boundary of Louisiana Department of Public Safety and Corrections, Angola Prison having a Coordinate of Y = 831,676.75; thence along the boundary of said Louisiana Department of Public Safety and Corrections, Angola Prison the following: Northwesterly and Northeasterly to a point of intersection with an East-West line having a Coordinate of Y = 841,676.75; thence East approximately 8,499 feet along said line to the point of beginning, containing approximately **2,395 acres**, all as more particularly outlined on a plat on file in the Office of Mineral Resources, Department of Natural Resources. All bearings, distances and coordinates are based on Louisiana Coordinate System of 1927, (North or South Zone), where applicable.

NOTE: The above description of the Tract nominated for lease has been provided and corrected, where required, exclusively by the nomination party. Any mineral lease selected from this Tract and awarded by the Louisiana State Mineral Board shall be without warranty of any kind, either express, implied, or statutory, including, but not limited to, the implied warranties of merchantability and fitness for a particular purpose. Should the mineral lease awarded by the Louisiana State Mineral Board be subsequently modified, cancelled or abrogated due to the existence of conflicting leases, operating agreements, private claims or other future obligations or conditions which may affect all or any portion of the leased Tract, it shall not relieve the Lessee of the obligation to pay any bonus due thereon to the Louisiana State Mineral Board, nor shall the Louisiana State Mineral Board be obligated to refund any consideration paid by the Lessor prior to such modification, cancellation, or abrogation, including, but not limited to, bonuses, rentals and royalties.

Applicant: LESLIE M. COOPER

Bidder	Cash Payment	Price/Acre	Rental	Oil	Gas	Other



P.O.B.

WEST FELICIANA PARISH

MISSISSIPPI RIVER

0 2,000 Feet



**TRACT 40576 - West Feliciana Parish, Louisiana**

All lands owned by and not presently under mineral lease as of November 12, 2008 from the State of Louisiana, situated in West Feliciana Parish, Louisiana, and being more fully described as follows: Beginning at a point having Coordinates of X = 1,909,820.30 and Y = 841,676.75; thence East 11,830.07 feet to a point having Coordinates of X = 1,921,650.37 and Y = 841,676.75; thence South 10,000.00 feet to a point having Coordinates of X = 1,921,650.37 and Y = 831,676.75; thence West 11,830.07 feet to a point having Coordinates of X = 1,909,820.30 and Y = 831,676.75; thence North 10,000.00 feet to the point of beginning, containing approximately **2,397 acres**, all as more particularly outlined on a plat on file in the Office of Mineral Resources, Department of Natural Resources. All bearings, distances and coordinates are based on Louisiana Coordinate System of 1927, (North or South Zone), where applicable.

NOTE: The above description of the Tract nominated for lease has been provided and corrected, where required, exclusively by the nomination party. Any mineral lease selected from this Tract and awarded by the Louisiana State Mineral Board shall be without warranty of any kind, either express, implied, or statutory, including, but not limited to, the implied warranties of merchantability and fitness for a particular purpose. Should the mineral lease awarded by the Louisiana State Mineral Board be subsequently modified, cancelled or abrogated due to the existence of conflicting leases, operating agreements, private claims or other future obligations or conditions which may affect all or any portion of the leased Tract, it shall not relieve the Lessee of the obligation to pay any bonus due thereon to the Louisiana State Mineral Board, nor shall the Louisiana State Mineral Board be obligated to refund any consideration paid by the Lessor prior to such modification, cancellation, or abrogation, including, but not limited to, bonuses, rentals and royalties.

Applicant: LESLIE M. COOPER

Bidder	Cash Payment	Price/Acre	Rental	Oil	Gas	Other



Legend

08110017

DOQQ2004

WEST FELICIANA PARISH

T1S - R5W

LAKE KILLARNEY

P.O.B.

3,000 Feet



**TRACT 40577 - West Feliciana Parish, Louisiana**

All lands owned by and not presently under mineral lease as of November 12, 2008 from the State of Louisiana, situated in West Feliciana Parish, Louisiana, and being more fully described as follows: Beginning at a point having Coordinates of X = 1,921,650.37 and Y = 841,676.75; thence East approximately 7,698 feet to a point on the boundary of Tunica Hills Wildlife Management Area having a Coordinate of Y = 841,676.75; thence along the boundary of said Tunica Hills Wildlife Management Area the following: Southerly approximately 4,574 feet, Northeasterly approximately 2,262 feet, Southeasterly, Westerly, Southwesterly and Southeasterly to a point of intersection with an East-West line having Coordinate of Y = 831,676.75; thence West approximately 8,642 feet along said East-West line to a point having Coordinates of X = 1,921,650.37 and Y = 831,676.75; thence North 10,000.00 feet to the point of beginning, **LESS AND EXCEPT**, that portion, if any, of the Tunica Hills Wildlife Management Area that lies within the above described tract, containing approximately **1,802 acres**, all as more particularly outlined on a plat on file in the Office of Mineral Resources, Department of Natural Resources. All bearings, distances and coordinates are based on Louisiana Coordinate System of 1927, (North or South Zone), where applicable.

NOTE: The above description of the Tract nominated for lease has been provided and corrected, where required, exclusively by the nomination party. Any mineral lease selected from this Tract and awarded by the Louisiana State Mineral Board shall be without warranty of any kind, either express, implied, or statutory, including, but not limited to, the implied warranties of merchantability and fitness for a particular purpose. Should the mineral lease awarded by the Louisiana State Mineral Board be subsequently modified, cancelled or abrogated due to the existence of conflicting leases, operating agreements, private claims or other future obligations or conditions which may affect all or any portion of the leased Tract, it shall not relieve the Lessee of the obligation to pay any bonus due thereon to the Louisiana State Mineral Board, nor shall the Louisiana State Mineral Board be obligated to refund any consideration paid by the Lessor prior to such modification, cancellation, or abrogation, including, but not limited to, bonuses, rentals and royalties.

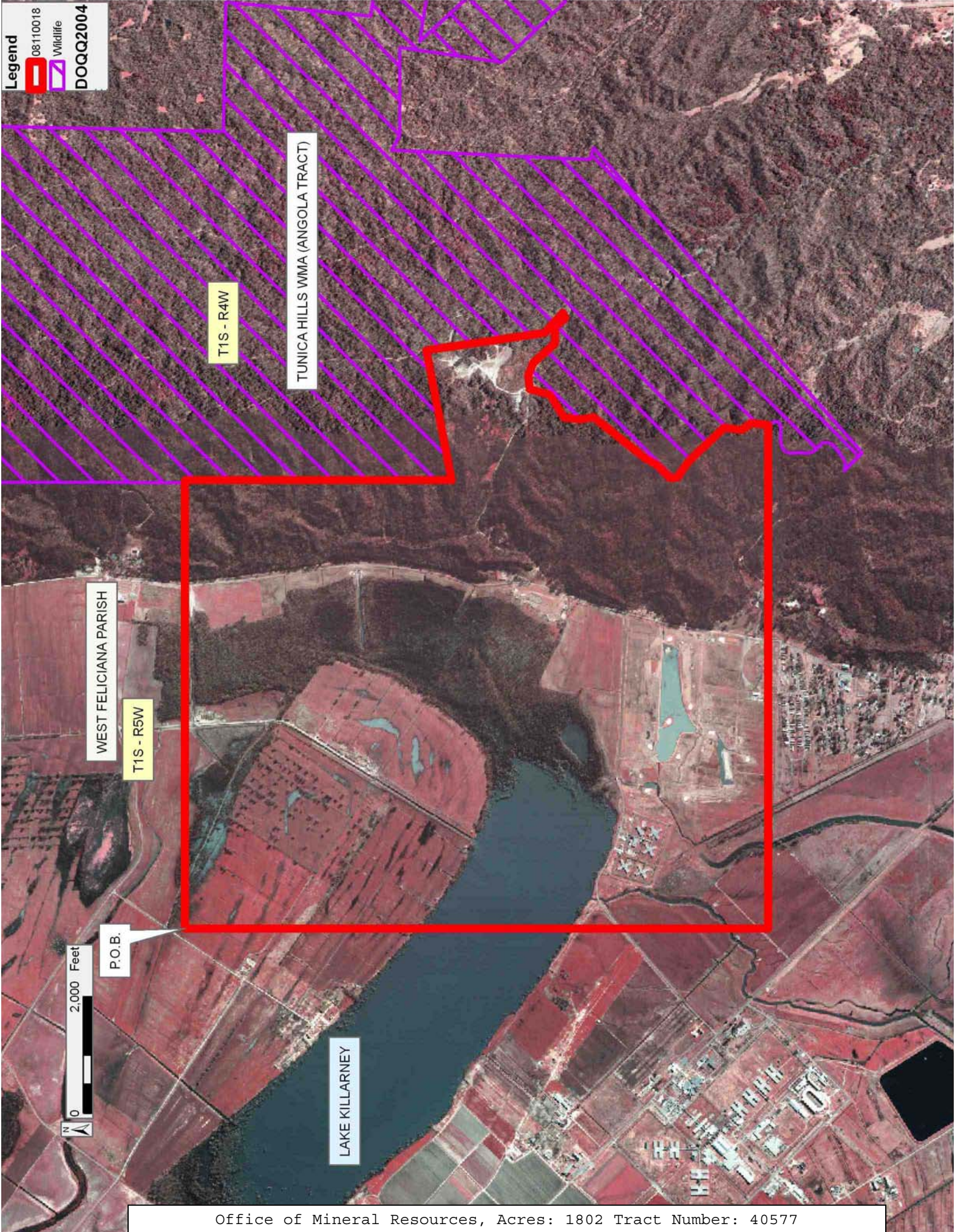
Bidder	Cash Payment	Price/Acre	Rental	Oil	Gas	Other

Applicant: LESLIE M. COOPER

**Legend**

-  08110018
-  Wildlife

**DOQQ2004**



T1S - R4W

TUNICA HILLS WMA (ANGOLA TRACT)

WEST FELICIANA PARISH

T1S - R5W

P.O.B.

LAKE KILLARNEY



**TRACT 40578 - West Feliciana Parish, Louisiana**

All lands, including lands now or formerly constituting the beds and bottoms of all water bodies of every nature and description, owned by and not presently under mineral lease as of November 12, 2008 from the State of Louisiana, situated in West Feliciana Parish, Louisiana, and being more fully described as follows: Beginning at a point having Coordinates of X = 1,915,401.12 and Y = 831,676.75; thence East approximately 14,900 feet to a point on the boundary of the Tunica Hills Wildlife Management Area; thence Southwesterly along the meanders of the boundary of said Tunica Hills Wildlife Management Area to a point of intersection with the boundary of the Louisiana Department of Public Safety and Corrections, Angola Prison; thence Southwesterly along the boundary of said Angola Prison to a point of intersection with an East-West line having a Coordinate of Y = 824,811.93; thence West approximately 8,031 feet along said line to a point having Coordinates of X = 1,915,401.12 and Y = 824,811.93; thence North 6,864.82 feet to the point of beginning, **LESS AND EXCEPT**, that portion, if any, of the Tunica Hills Wildlife Management Area that lies within the above described tract, containing approximately **1,910 acres**, all as more particularly outlined on a plat on file in the Office of Mineral Resources, Department of Natural Resources. All bearings, distances and coordinates are based on Louisiana Coordinate System of 1927, (North or South Zone), where applicable.

NOTE: The above description of the Tract nominated for lease has been provided and corrected, where required, exclusively by the nomination party. Any mineral lease selected from this Tract and awarded by the Louisiana State Mineral Board shall be without warranty of any kind, either express, implied, or statutory, including, but not limited to, the implied warranties of merchantability and fitness for a particular purpose. Should the mineral lease awarded by the Louisiana State Mineral Board be subsequently modified, cancelled or abrogated due to the existence of conflicting leases, operating agreements, private claims or other future obligations or conditions which may affect all or any portion of the leased Tract, it shall not relieve the Lessee of the obligation to pay any bonus due thereon to the Louisiana State Mineral Board, nor shall the Louisiana State Mineral Board be obligated to refund any consideration paid by the Lessor prior to such modification, cancellation, or abrogation, including, but not limited to, bonuses, rentals and royalties.

Applicant: LESLIE M. COOPER

Bidder	Cash Payment	Price/Acre	Rental	Oil	Gas	Other

**Legend**  
08110021  
Wildlife  
DOQQ2004

TUNICA HILLS WMA (ANGOLA TRACT)

WEST FELICIANA PARISH

T1S - R5W

P.O.B.



**TRACT 40579 - West Feliciana Parish, Louisiana**

All lands, including lands now or formerly constituting the beds and bottoms of all water bodies of every nature and description, owned by and not presently under mineral lease as of November 12, 2008 from the State of Louisiana, situated in West Feliciana Parish, Louisiana, and being more fully described as follows: Beginning at a point having Coordinates of X = 1,915,401.12 and Y = 831,676.75; thence South 6,864.82 feet to a point having Coordinates of X = 1,915,401.12 and Y = 824,811.93; thence West approximately 8,111 feet to a point on the boundary of the Louisiana Department of Public Safety and Corrections, Angola Prison having a Coordinate of Y = 824,811.93; thence Northwesterly along the boundary of said Louisiana Department of Public Safety and Corrections, Angola Prison to a point of intersection with an East-West line having a Coordinate of Y = 831,676.75; thence East approximately 14,812 feet along said line to the point of beginning, containing approximately **1,964 acres**, all as more particularly outlined on a plat on file in the Office of Mineral Resources, Department of Natural Resources. All bearings, distances and coordinates are based on Louisiana Coordinate System of 1927, (North or South Zone), where applicable.

NOTE: The above description of the Tract nominated for lease has been provided and corrected, where required, exclusively by the nomination party. Any mineral lease selected from this Tract and awarded by the Louisiana State Mineral Board shall be without warranty of any kind, either express, implied, or statutory, including, but not limited to, the implied warranties of merchantability and fitness for a particular purpose. Should the mineral lease awarded by the Louisiana State Mineral Board be subsequently modified, cancelled or abrogated due to the existence of conflicting leases, operating agreements, private claims or other future obligations or conditions which may affect all or any portion of the leased Tract, it shall not relieve the Lessee of the obligation to pay any bonus due thereon to the Louisiana State Mineral Board, nor shall the Louisiana State Mineral Board be obligated to refund any consideration paid by the Lessor prior to such modification, cancellation, or abrogation, including, but not limited to, bonuses, rentals and royalties.

Applicant: LESLIE M. COOPER

Bidder	Cash Payment	Price/Acre	Rental	Oil	Gas	Other



**Legend**  
08110019  
Active\_Leases  
DOQQ2004

P.O.B.

T1S - R5W

WEST FELICIANA PARISH

MISSISSIPPI RIVER



**TRACT 40580 - West Feliciana Parish, Louisiana**

All lands, including lands now or formerly constituting the beds and bottoms of all water bodies of every nature and description, owned by and not presently under mineral lease as of November 12, 2008 from the State of Louisiana, situated in West Feliciana Parish, Louisiana, and being more fully described as follows: Beginning at a point having Coordinates of X = 1,915,401.12 and Y = 824,811.93; thence East approximately 8,031 feet to a point on the boundary of Louisiana Department of Public Safety and Corrections, Angola Prison having a Coordinate of Y = 824,811.93; thence along the boundary of said Angola Prison the following: Southwesterly, Easterly, Westerly and Northwesterly to a point of intersection with an East-West line having a Coordinate of Y = 824,811.93; thence East approximately 8,111 feet along said line to the point of beginning, containing approximately **1,493 acres**, all as more particularly outlined on a plat on file in the Office of Mineral Resources, Department of Natural Resources. All bearings, distances and coordinates are based on Louisiana Coordinate System of 1927, (North or South Zone), where applicable.

NOTE: The above description of the Tract nominated for lease has been provided and corrected, where required, exclusively by the nomination party. Any mineral lease selected from this Tract and awarded by the Louisiana State Mineral Board shall be without warranty of any kind, either express, implied, or statutory, including, but not limited to, the implied warranties of merchantability and fitness for a particular purpose. Should the mineral lease awarded by the Louisiana State Mineral Board be subsequently modified, cancelled or abrogated due to the existence of conflicting leases, operating agreements, private claims or other future obligations or conditions which may affect all or any portion of the leased Tract, it shall not relieve the Lessee of the obligation to pay any bonus due thereon to the Louisiana State Mineral Board, nor shall the Louisiana State Mineral Board be obligated to refund any consideration paid by the Lessor prior to such modification, cancellation, or abrogation, including, but not limited to, bonuses, rentals and royalties.

Applicant: LESLIE M. COOPER

Bidder	Cash Payment	Price/Acre	Rental	Oil	Gas	Other



WEST FELICIANA PARISH

T1S - R5W

P.O.B.

MISSISSIPPI RIVER

